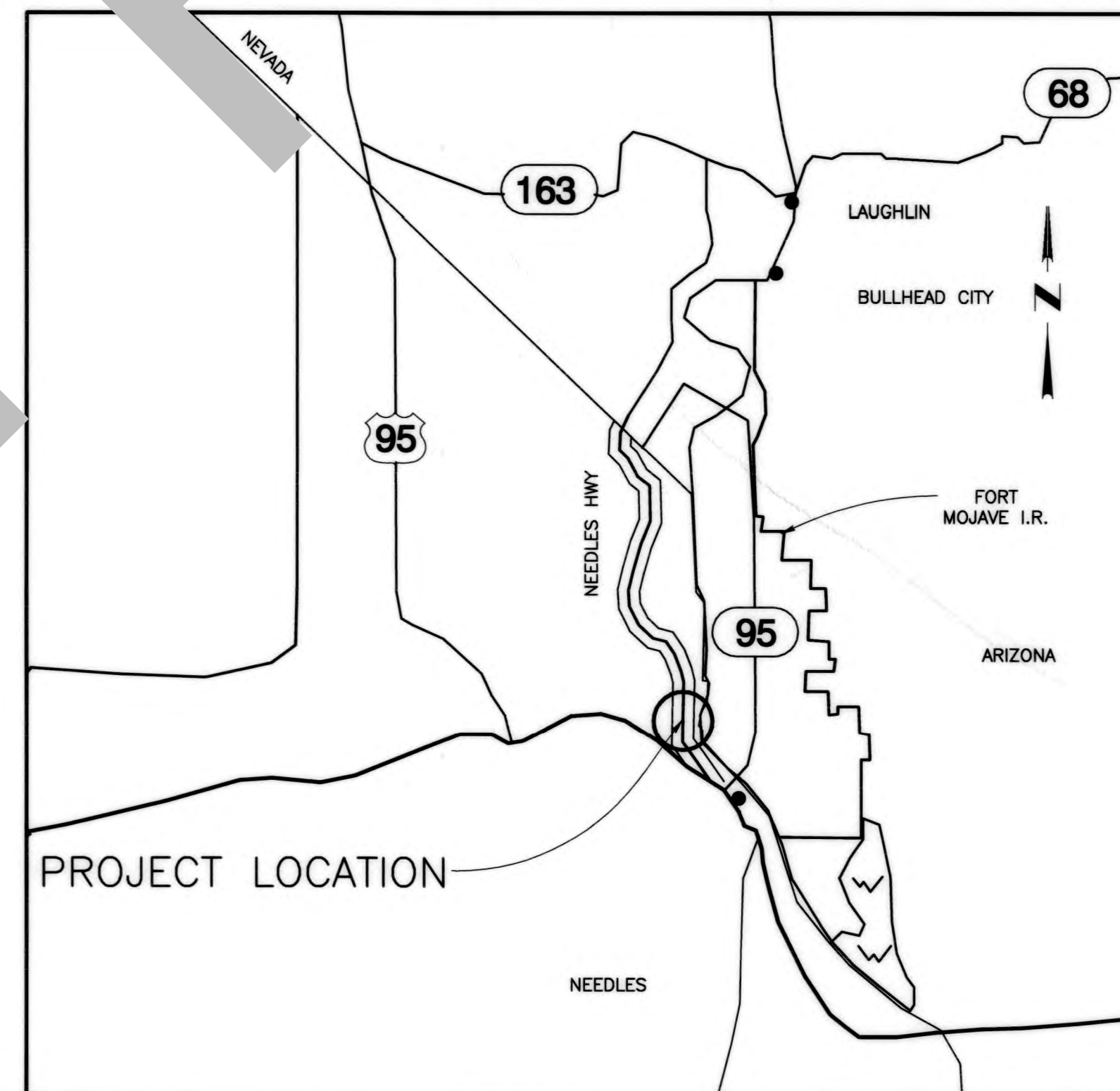


SAN BERNARDINO COUNTY DEPARTMENT OF PUBLIC WORKS

TRANSPORTATION PLANS FOR CONSTRUCTION ON NEEDLES HIGHWAY SEGMENT 1B

500 FEET SOUTH OF PARK ROAD
TO 1 MILE NORTH
NEEDLES AREA

WORK ORDER NO. 11-1076 ROAD NO. 588575 030
FEDERAL AID PROJECT: PLHDL08-5954(145)



LOCATION MAP

NOT TO SCALE

SAN BERNARDINO COUNTY

APPROVED BY: Brendon Biggs
BRENDON BIGGS, M.S., P.E., DIRECTOR OF PUBLIC WORKS, R.C.E. 57127

APPROVED BY: David R. Doublet 1/13/22
DAVID R. DOUBLET, M.S., P.E., ASSISTANT DIRECTOR OF PUBLIC WORKS R.C.E. 61291

CITY OF NEEDLES

APPROVED BY: Alberto Pava 1/13/22
ALBERTO PAVA, CITY ENGINEER-BUILDING OFFICIAL R.C.E. 53534 DATE

FILE NO. 588575 030

FILE NO. 588575 030

MARK	CHANGES	RESIDENT ENGINEER	DATE
	NO CHANGES		
FIELD CHANGES			
	SHT. NO.	TOT. SHT'S.	
	1	8	

W:\Design Team - C:\Needles Highway - 11010 - Draw 11\Draw\SEGMENT 1B\Segment 1B (Final 1-2-2021)\V01010 Needles Hwy 1B-040 Overlay (Final 1-2-2021).dwg - MODIFIED 11/16/2021 8:43:28M

INDEX OF SHEETS

- 1 TITLE SHEET
- 2 PROJECT NOTES, INDEX MAP, LEGENDS AND INDEX OF SHEETS
- 3 TYPICAL SECTIONS AND MISCELLANEOUS DETAILS
- 4-6 PLAN SHEETS (STREETS)
- 7-8 TRAFFIC SIGNING AND STRIPING PLANS

THE FOLLOWING SPECIAL DRAWINGS AND COUNTY STANDARDS ARE ATTACHED TO THE SPECIAL PROVISIONS:

303 A 303 B

TO BE SUPPLEMENTED BY THE FOLLOWING CALTRANS STANDARD PLANS DATED OCTOBER 30, 2015.

A20A A20B A20D A24A
A24D A24E A62A RSP T9
RSP T10 T13

TO BE SUPPLEMENTED BY THE FOLLOWING CA MUTCD PLANS DATED, 2014.

FIG 2A-2(CA) FIG 2A-3 FIG 2C-13(CA)
FIG 3B-102(CA) FIG 6H-28 FIG 6H-29
FIG 7B-1(CA) Sec. 6D.01 Sec. 6D.02

THIS PROJECT REQUIRES A CONTRACTOR'S LICENSE CLASS "A" OR CLASS C12

GENERAL NOTES

U. THE FACT THAT ANY UTILITY FACILITY IS SHOWN OR NOT SHOWN UPON THE PLANS SHALL NOT RELIEVE THE CONTRACTOR OF THE RESPONSIBILITY UNDER SECTION 8-1.10 "UTILITY AND NON-HIGHWAY FACILITIES," OF THE CALTRANS STANDARD SPECIFICATIONS. IT SHALL BE THE CONTRACTOR'S RESPONSIBILITY, PURSUANT THERETO, TO ASCERTAIN THE LOCATION OF ANY UTILITY FACILITY WHICH MAY BE SUBJECT TO DAMAGE BY REASON OF THE CONTRACTOR'S OPERATIONS.

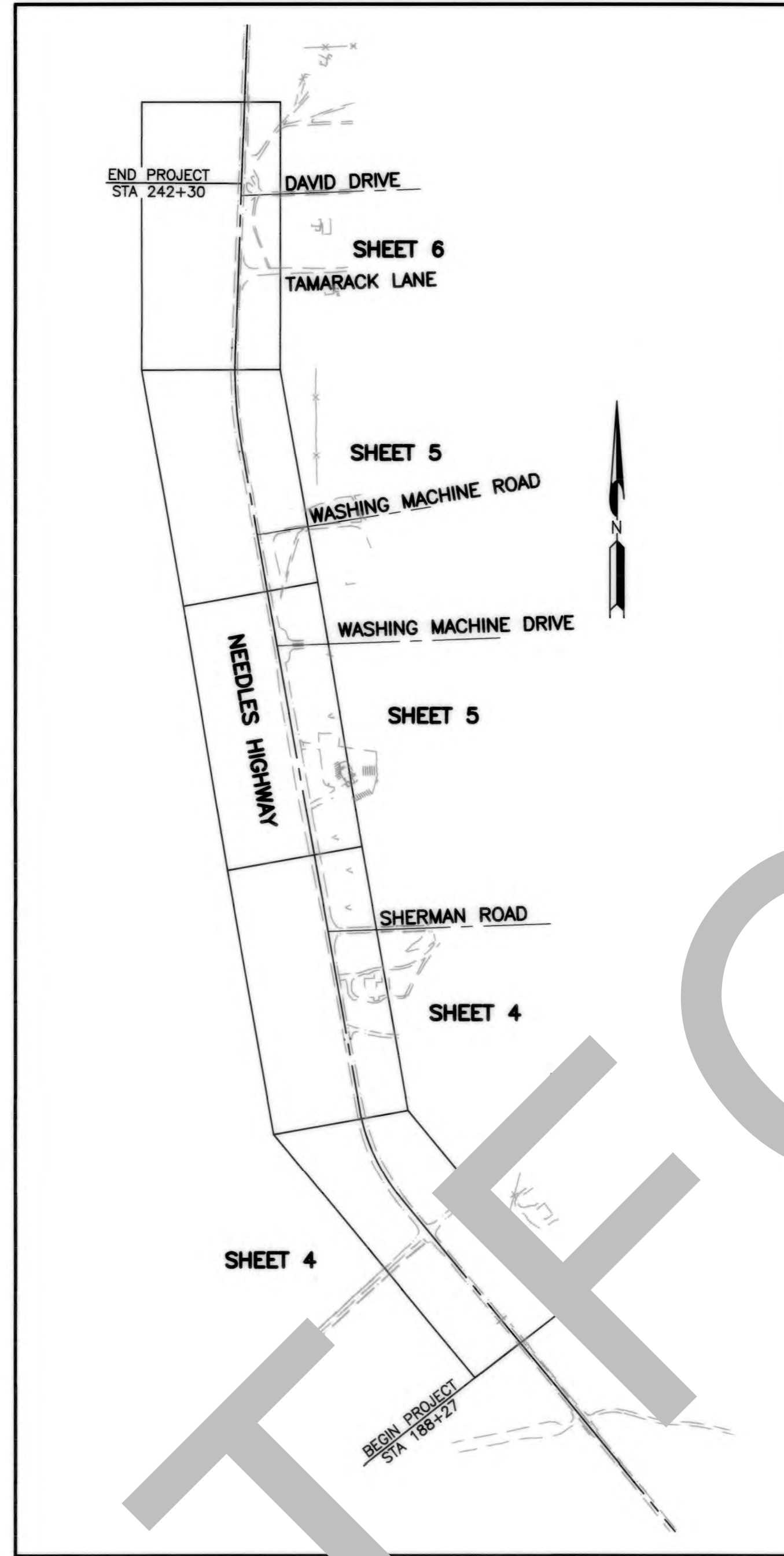
1. ALL STATIONING NOTES ON PLAN REFER TO THE C.L. IMP. OF NEEDLES HIGHWAY OR SIDE STREET.
2. DIMENSIONS ARE SUBJECT TO TOLERANCES SPECIFIED IN THE CALTRANS STANDARD SPECIFICATIONS.
3. ALL PAVEMENT WIDTH DIMENSIONS SHOWN ON THE PLANS ARE TO THE EDGE OF PAVEMENT OR TO THE TOP OF CURB, UNLESS OTHERWISE NOTED.
4. TRANSITIONS AND WARPING SHALL BE AS SHOWN AND AS DETERMINED BY THE ENGINEER.
5. ASPHALT CONCRETE OVERLAYS SHALL BE FEATHERED TO MEET EXISTING AS SHOWN ON THE PLANS OR AS DETERMINED BY THE ENGINEER.
6. ALL TREES & VEGETATION OUTSIDE THE LIMITS OF EXCAVATION AND EMBANKMENT SLOPE LINES, SHALL BE PROTECTED IN PLACE.
7. ALL DISTANCES SHOW HEREON ARE GRID DISTANCES AND MULTIPLY GRID DISTANCE BY 1/CF TO OBTAIN GROUND DISTANCES.

BENCH MARK:

FOUND 3 1/2" NGS BRASS DISK IN 6x6 CONC MNMT ON THE NE'LY SIDE OF 2001 VINE ST ±30' S'LY & 30' W'LY FROM INT. OF VINE ST. & Q ST. PER NGS DATASHEET EU0745. NAVD-88 ELEVATION = 491.57'

BASIS OF BEARINGS:

BEARINGS AND COORDINATES ARE GRID, CCS83 Zone 5, NAD-83 (1992.98), BASED ON GPS STATIC TIES TO CORS STATIONS "NDAP" & "P625" COMBINATION FACTOR = .9999043653



INDEX MAP

CONSTRUCTION & UNDERGROUND UTILITY LEGEND

- [Symbol] ASPHALT CONCRETE OVERLAY
- [Symbol] PULVERIZED ASPHALT
- [Symbol] GRADED EARTH (SHOULDER BACKING)
- [Symbol] COLD PLANE
- [Symbol] PROPOSED SLOPE
- [Symbol] GAS LINE
- [Symbol] SEWER MAIN
- [Symbol] WATER LINE
- [Symbol] ELECTRIC LINE
- [Symbol] TELEPHONE LINE
- [Symbol] OVERHEAD ELECTRICAL

ABBREVIATIONS

- AB = AGGREGATE
- AC = ASPHALT CONCRETE
- AP = ANGLE POINT
- B = BEGIN CURVE
- CB = CONCRETE
- CL = CENTERLINE
- CRSP = CONCRETE ROCK SLOPE PROTECTION
- CONC = CONCRETE
- DM = DUCT MAN POWER POLE ANCHOR
- E = ELEVATION
- EL = ELEVATION
- ELEC = ELECTRIC BOX
- EGAS = UNDERGROUND GAS PADDLE
- IMP = IMPROVEMENT
- MB = MAIL BOX
- PI = POINT OF INTERSECTION
- PP = POWER POLE
- R/W = RIGHT OF WAY
- S = SIGN
- ST = STREET SIGN
- TEL BOX = TELEPHONE BOX/RISER
- TEL PAD = UNDERGROUND TELEPHONE
- () = EXISTING
- VAR = VARIES
- RT = RIGHT
- LT = LEFT
- PT = POINT
- THK = THICKNESS
- MIN = MINIMUM
- GRD = GROUND
- EXIST = EXISTING
- STA = STATION
- EP = EDGE OF PAVEMENT
- ES = EDGE OF SHOULDER
- EDC = EDGE OF CONCRETE

CONSTRUCTION NOTES:
 1. ALL UTILITIES TO BE RELOCATED TO OTHERS (SEE NOTE U. OF GENERAL NOTES ON SHEET NO. 2).
 2. PULVERIZE IN PLACE THE EXISTING ASPHALT AND NATIVE MATERIAL FOR A DEPTH OF 0.40' BELOW THE EXISTING TOP OF PAVEMENT SURFACE, COMPACT TO 95% RELATIVE COMPACTION. PLACE 0.45' OF TYPE "A" 3/4" AGGREGATE GRADATION, PG 64-28PM HOT MIX ASPHALT.
 3. PULVERIZE IN PLACE THE EXISTING ASPHALT AND NATIVE MATERIAL FOR A DEPTH OF 0.40' BELOW THE EXISTING TOP OF PAVEMENT SURFACE, ADD 2% CEMENT TO PULVERIZED MATERIAL AND COMPACT TO 95% RELATIVE COMPACTION. APPLY PRIME COAT TO COMPACTED CEMENT TREATED SURFACE. PLACE 0.45' OF TYPE "A" 3/4" AGGREGATE GRADATION, PG 64-28PM HOT MIX ASPHALT.
 4. CONSTRUCT 12" WIDE SHOULDERS TO MEET EXISTING ASPHALT PAVING.
 5. CONSTRUCT 12" WIDE SHOULDERS TO MEET EXISTING ASPHALT PAVING PER DETAIL ON SHEET 3.
 6. COLD PLAN EXISTING ASPHALT TO 1' WIDE X 4' DEEP PER TYPICAL SECTION ON SHEET 3.
 7. PROTECT IN PLACE ALL EXISTING UTILITIES TO REMAIN. MINIMUM COVER SHALL BE 0.15' THK MIN.

SAN BERNARDINO COUNTY TRAFFIC CONTROL GENERAL NOTES :

- 1- ALL SIGNING, STRIPING AND PAVEMENT MARKINGS SHALL BE IN CONFORMANCE WITH THE CALIFORNIA MUTCD LATEST EDITION.
- 2- ALL STRIPING AND PAVEMENT MARKINGS SHALL BE PAINTED IN CONFORMANCE WITH THE CALTRANS 2015 STANDARD PLANS (DATED OCTOBER 30, 2015).
- 3- ALL STRIPING (LONG LINE) AND PAVEMENT MARKINGS SHALL BE RETRO-REFLECTIVE PAINT.
- 4- ALL SIGNS SHALL BE OF HIGH INTENSITY (FHWA TYPE III/IV) RETRO-REFLECTIVE SHEETING EXCEPT:
 - A. "STOP" SIGNS SHALL BE DIAMOND GRADE (FHWA TYPE VII IN RURAL SETTINGS AND TYPE IX IN URBAN SETTINGS) RETRO-REFLECTIVE SHEETING.
 - B. "NO PARKING" SIGNS SHALL BE OF SUPER ENGINEERING GRADE (FHWA TYPE II) RETRO-REFLECTIVE SHEETING.
 - C. SCHOOL SIGNS SHALL BE OF DIAMOND GRADE (FHWA TYPE IX) FLUORESCENT YELLOW-GREEN (FYG) RETRO-REFLECTIVE SHEETING.
 - D. STREET NAME MARKERS SHALL BE OF DIAMOND GRADE (FHWA TYPE IX) RETRO-REFLECTIVE SHEETING AND CONFORM TO COUNTY STANDARD 303.
 - E. CONSTRUCTION SIGNS SHALL BE OF DIAMOND GRADE (FHWA TYPE IX) FLUORESCENT ORANGE RETRO-REFLECTIVE SHEETING.
- 5- ALL DELINEATORS, CHANNELIZERS, AND OBJECT MARKERS SHALL BE OF (FHWA TYPE VII) RETRO-REFLECTIVE SHEETING.
- 6- SIGNS SHALL BE MOUNTED ON METAL POSTS SIMILAR TO COUNTY STANDARDS 303(a) AND 303(b).
- 7- ALL CONFLICTING STRIPING AND PAVEMENT MARKINGS NOT SHOWN ON PLANS SHALL BE REMOVED BY THE CONTRACTOR. REMOVAL SHALL BE ACCOMPLISHED BY SANDBLASTING, GRINDING, OR AS DIRECTED BY COUNTY REPRESENTATIVE.
- 8- ALL CONFLICTING SIGNS SHALL BE REMOVED, RELOCATED, OR COVERED BY THE CONTRACTOR. RELOCATABLE SIGNS SHALL BE INSTALLED AS SPECIFIED ON THE PLANS OR AS DIRECTED BY COUNTY REPRESENTATIVE.
- 9- ALL UNPROTECTED LOCATIONS RESULTING IN ISOLATED ABRUPT DEPRESSIONS OR ELEVATED OBJECTS (i.e. CATCH BASINS, HEADWALLS, POWER POLES, END TREATMENT OF ASPHALT DIKES AND CONCRETE CURBS) SHALL BE PROTECTED BY DELINEATORS OR BARRIERS PER THE CALIFORNIA MUTCD LATEST EDITION.
- 10- ALL EXISTING SIGNING, STRIPING AND PAVEMENT MARKINGS (i.e. CROSS STREET STOP, STOP LIMIT LINE, AND CROSSWALK PAVEMENT MARKINGS) NOT SHOWN ON PLANS, IF REMOVED/OBLITERATED, SHALL BE REPLACED/RESTORED OF SAME KIND, AND IN CONFORMANCE WITH THE CALIFORNIA MUTCD LATEST EDITION.
- 11- THE CONTRACTOR SHALL NOTIFY COUNTY REPRESENTATIVE TO SCHEDULE A FINAL REVIEW (WALK THROUGH) WITH TRAFFIC DIVISION PERSONNEL FOR APPROVAL OF TRAFFIC CONTROL DEVICES PRIOR TO PROJECT ACCEPTANCE.

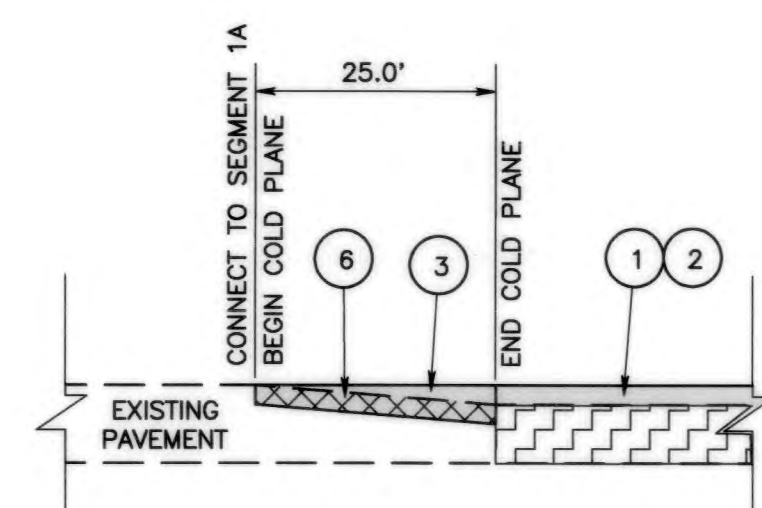
REVISIONS	DATE	APPR.

REVISIONS	DATE	APPR.

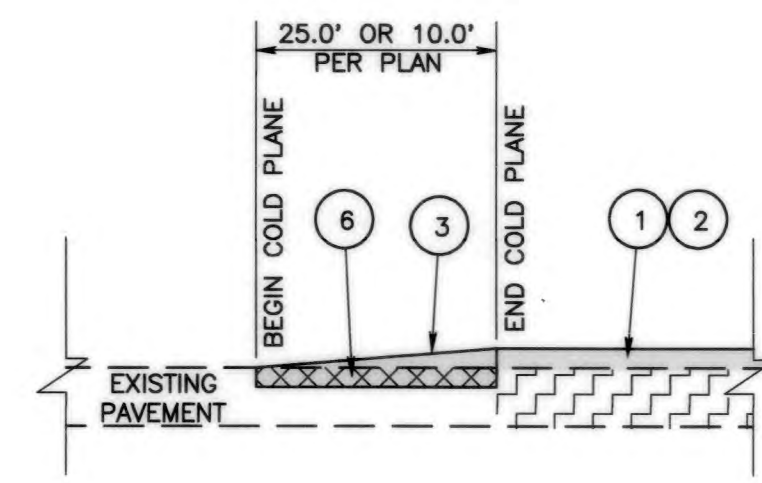
FILE NO. 588575 030

FILE NO. 588575 030

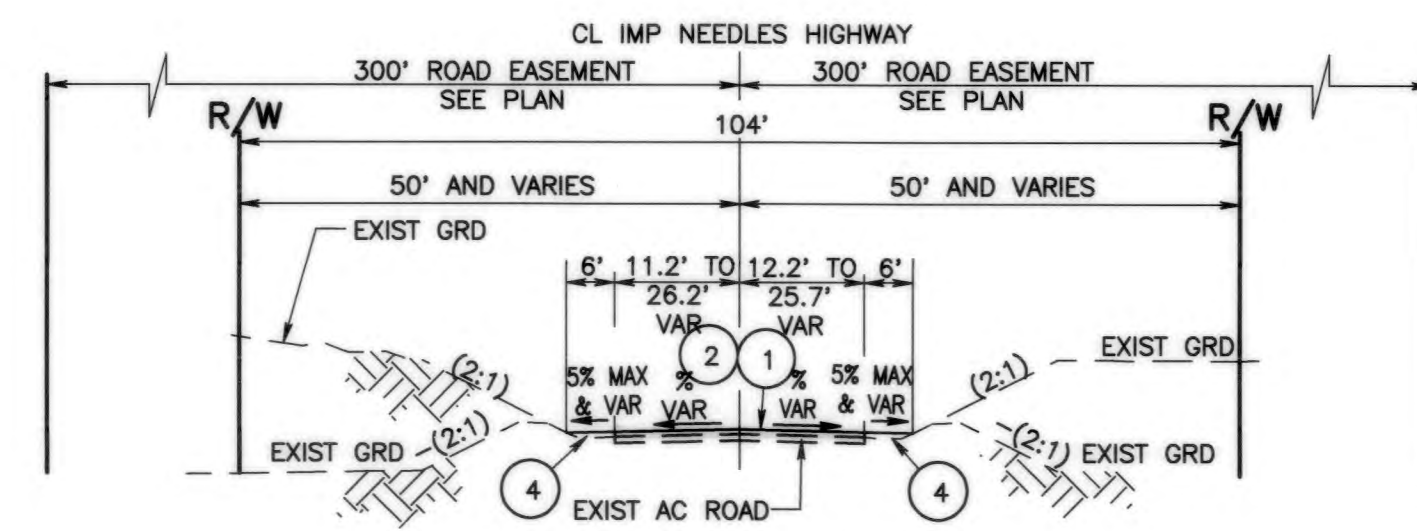
		SAN BERNARDINO COUNTY DEPARTMENT OF PUBLIC WORKS		NEEDLES HIGHWAY SEGMENT 1B PROJECT NOTES, INDEX MAP, LEGENDS AND INDEX OF SHEETS NEEDLES AREA	
DESIGNED BY: DJ	DRAWN BY: CBB	CHECKED BY: TB	RECOMMENDED BY: Mervat N. Mikhail, P.E. ENGINEERING MANAGER 1/19/2022	APPROVED BY: Thomas Bustamonte, P.E. SUPERVISING ENGINEER 1/20/22	NOEL CASTILLO, P.E. DEPUTY DIRECTOR 1/26/22
FIELD CHANGES NO CHANGES RESIDENT ENGINEER DATE			J.L. REF. J.L. REF. W.O. NO. SCALE SHT. NO. TOT. SHT'S. JL10371 H14876 AS SHOWN 2 8		



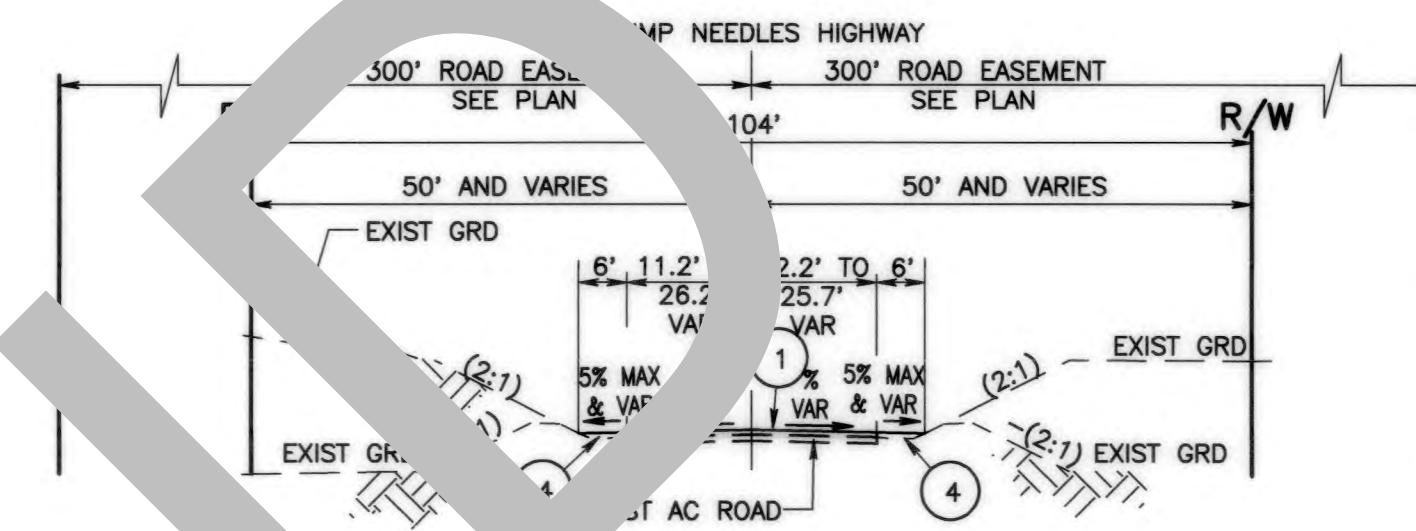
COLD PLANE DETAIL
NOT TO SCALE
STA 188+27.00



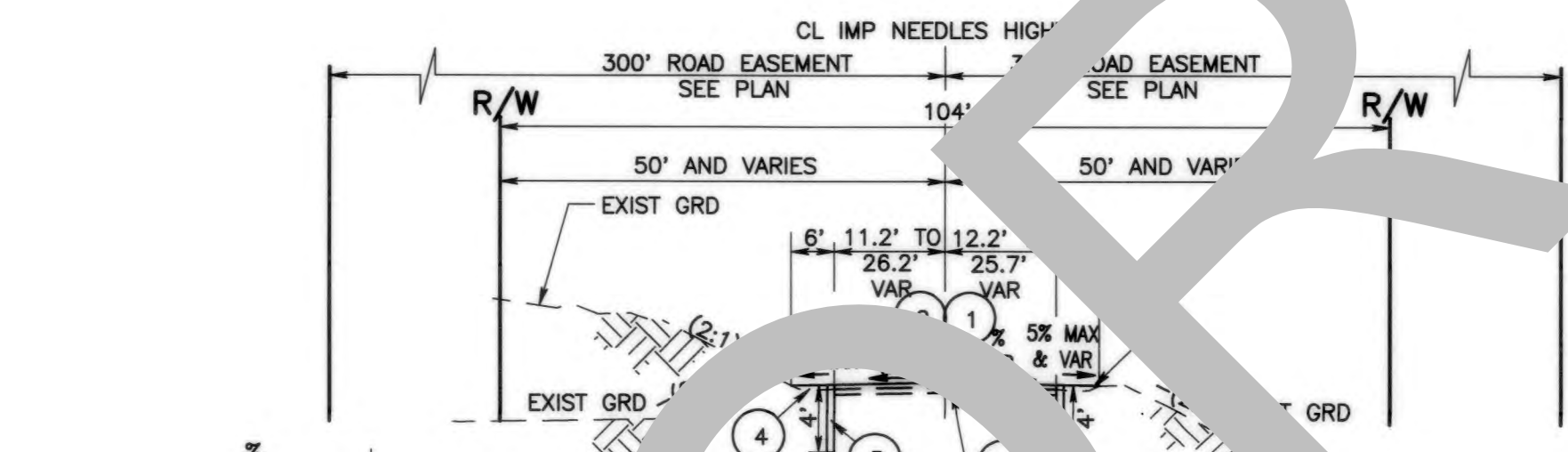
COLD PLANE DETAIL
NOT TO SCALE
STA 242+30.00
DRIVEWAYS AND CROSS ROADS



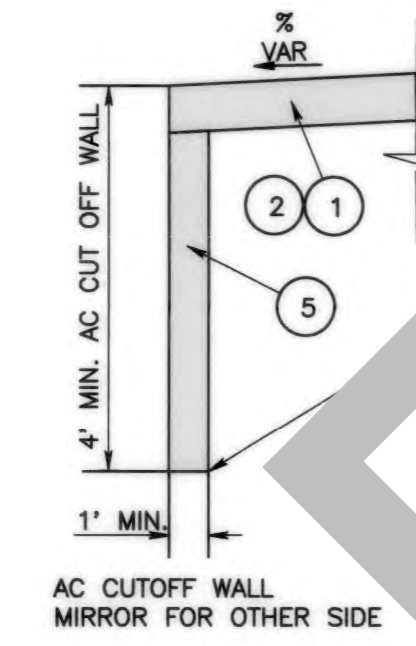
TYPICAL SECTION
NOT TO SCALE
FROM STA 188+27.00 TO STA 203+89.30
FROM STA 205+39.30 TO STA 226+74.30
FROM STA 228+24.30 TO STA 229+50.00



TYPICAL SECTION
NOT TO SCALE
FROM STA 229+50.00 TO STA 235+24.30
FROM STA 236+74.30 TO STA 242+30.00



TYPICAL SECTION
NOT TO SCALE
FROM STA 203+89.30 TO STA 205+39.30
FROM STA 206+74.30 TO STA 228+24.30
FROM STA 228+24.30 TO STA 236+74.30



- CONSTRUCTION NOTES:**
- U UTILITIES TO BE RELOCATED BY OTHERS (SEE NOTE U. OF GENERAL NOTES ON SHEET NO. 2).
 - 1 SCHEDULE A.
 - 2 PULVERIZE IN PLACE THE EXISTING AC AND NATIVE MATERIAL FOR A DEPTH OF 0.40' BELOW THE EXISTING TOP OF PAVEMENT SURFACE, COMPACT TO 95% RELATIVE COMPACTION. PLACE 0.45' OF TYPE "A" 3/4" AGGREGATE GRADATION, PG 64-28PM HOT MIX ASPHALT.
 - 3 ADDITIVE NO. 1, SCHEDULE B.
 - 4 PULVERIZE IN PLACE THE EXISTING AC AND NATIVE MATERIAL FOR A DEPTH OF 0.40' BELOW THE EXISTING TOP OF PAVEMENT SURFACE, ADD 2% CEMENT TO PULVERIZED MATERIAL AND THEN COMPACT TO 95% RELATIVE COMPACTION. APPLY PRIME COAT TO COMPACTED CEMENT TREATED SUBGRADE. PLACE 0.45' OF TYPE "A" 3/4" AGGREGATE GRADATION, PG 64-28PM HOT MIX ASPHALT.
 - 5 PLACE VARIABLE THICKNESS OVERLAY TO MEET EXISTING ASPHALT PAVING.
 - 6 CONSTRUCT 6" WIDE SHOULDER BACKING PER DETAIL ON SHEET 3.
 - 7 CONSTRUCT ASPHALT CUTOFF WALL 1' WIDE X 4' DEEP PER TYPICAL SECTION ON SHEET 3.
 - 8 COLD PLANE EXISTING ASPHALT 0.15' THK MIN.

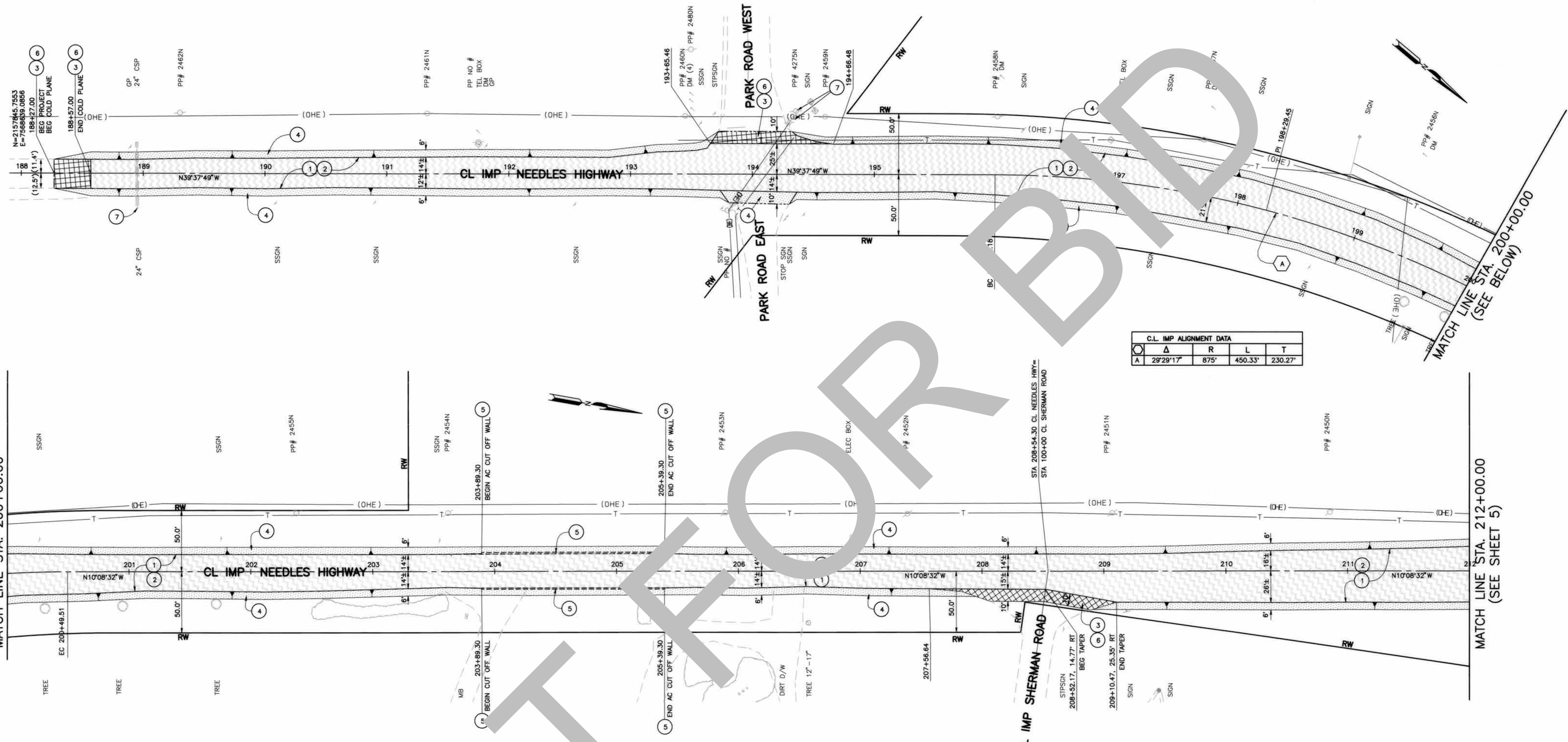
NOT FOR CONSTRUCTION

MARK	REVISIONS	DATE

FIELD CHANGES MARK CHANGES NO CHANGES RESIDENT ENGINEER DATE			SAN BERNARDINO COUNTY DEPARTMENT OF PUBLIC WORKS		NEEDLES HIGHWAY SEGMENT 1B TYPICAL SECTIONS AND MISCELLANEOUS DETAILS NEEDLES AREA	
			DESIGNED BY: DJ DRAWN BY: CBB CHECKED BY: TB RECOMMENDED BY: <i>Meriat N. Mikhail</i> MERIAT N. MIKHAIL, P.E. ENGINEERING-MANAGER DATE: 1/19/2022	APPROVED BY: <i>Noel Castillo</i> NOEL CASTILLO, P.E. DEPUTY DIRECTOR DATE: 1/26/22	J.L. REF. JL10371 W.O. NO. H14876 SCALE AS SHOWN SHT. NO. 3 TOT. SHTS. 8	

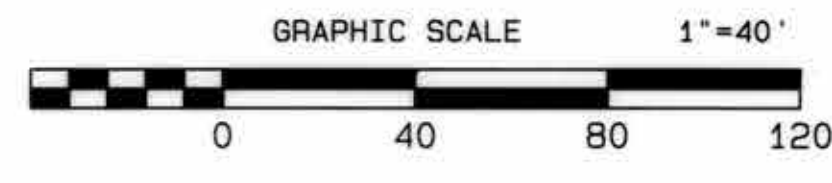
(SEE ABOVE)
MATCH LINE STA. 200+00.00

MATCH LINE STA. 212+00.00
(SEE SHEET 5)



C.L. IMP ALIGNMENT DATA				
Δ	R	L	T	
A	29°29'17"	875'	450.33'	230.27'

- CONSTRUCTION NOTES:**
- U UTILITIES TO BE RELOCATED BY OTHERS (SEE NOTE U. OF GENERAL NOTES ON SHEET NO. 2).
 - 1 SCHEDULE A.
 - 1 PULVERIZE IN PLACE THE EXISTING AC AND NATIVE MATERIAL FOR A DEPTH OF 0.40' BELOW THE EXISTING TOP OF PAVEMENT SURFACE, COMPACT TO 95% RELATIVE COMPACTION. PLACE 0.45' OF TYPE "A" 3/4" AGGREGATE GRADATION, PG 64-28PM HOT MIX ASPHALT.
 - 2 ADDITIVE NO. 1, SCHEDULE B.
 - 2 PULVERIZE IN PLACE THE EXISTING AC AND NATIVE MATERIAL FOR A DEPTH OF 0.40' BELOW THE EXISTING TOP OF PAVEMENT SURFACE, ADD 2% CEMENT TO PULVERIZED MATERIAL AND THEN COMPACT TO 95% RELATIVE COMPACTION. APPLY PRIME COAT TO COMPACTED CEMENT TREATED SUBGRADE. PLACE 0.45' OF TYPE "A" 3/4" AGGREGATE GRADATION, PG 64-28PM HOT MIX ASPHALT.
 - 3 PLACE VARIABLE THICKNESS OVERLAY TO MEET EXISTING ASPHALT PAVING.
 - 4 CONSTRUCT 6' WIDE SHOULDER BACKING PER DETAIL ON SHEET 3.
 - 5 CONSTRUCT ASPHALT CUTOFF WALL 1' WIDE X 4' DEEP PER TYPICAL SECTION ON SHEET 3.
 - 6 COLD PLANE EXISTING ASPHALT 0.15' THK MIN.
 - 7 PROTECT IN PLACE.



FILE NO. 588575 030

MARK	REVISIONS	DATE

MARK	CHANGES	RESIDENT ENGINEER	DATE
	NO CHANGES		

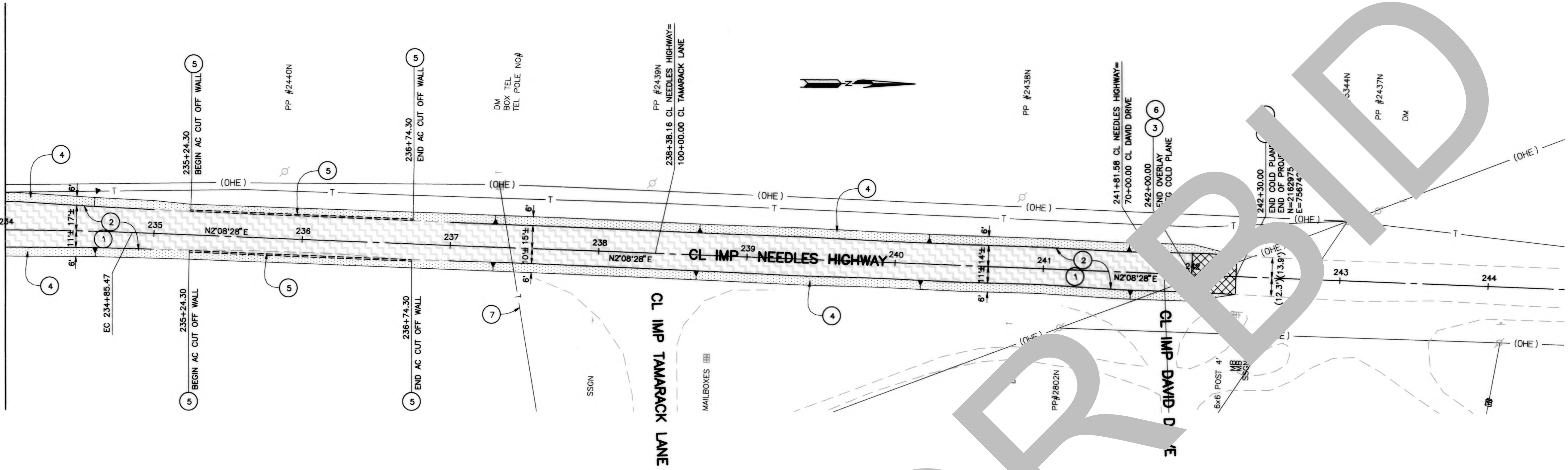
FIELD CHANGES



SAN BERNARDINO COUNTY DEPARTMENT OF PUBLIC WORKS			
DESIGNED BY: DJ	DRAWN BY: CBB	CHECKED BY: TB	RECOMMENDED BY: 1/19/2022 MERVAT N. MINGOIL, P.E. ENGINEERING MANAGER
APPROVED BY: 1/20/22 THOMAS BUSTAMANTE, P.E. SUPERVISING ENGINEER			DATE: 1/26/22 NOEL CASTILLO, P.E. DEPUTY DIRECTOR

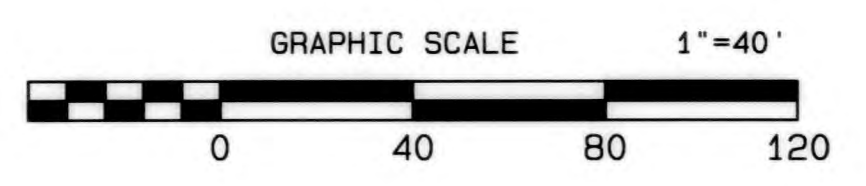
NEEDLES HIGHWAY SEGMENT 1B				
PLAN NEEDLES HIGHWAY				
FROM STA. 188+27.00 TO STA. 212+00.00				
J.L. REF. JL10371	W.O. NO. H14876	SCALE AS SHOWN	SHT. NO. 4	TOT. SHT'S. 8

(SEE SHEET 5)
MATCH LINE STA. 234+00.00



NOT FOR BIDD

- CONSTRUCTION NOTES:**
- U UTILITIES TO BE RELOCATED BY OTHERS (SEE NOTE U. OF GENERAL NOTES ON SHEET NO. 2).
 - 1 SCHEDULE A
 - 1 PULVERIZE IN PLACE THE EXISTING AC AND NATIVE MATERIAL FOR A DEPTH OF 0.40' BELOW THE EXISTING TOP OF PAVEMENT SURFACE, COMPACT TO 95% RELATIVE COMPACTION. PLACE 0.45' OF TYPE "A" 3/4" AGGREGATE GRADATION, PG 64-28PM HOT MIX ASPHALT.
 - 2 ADDITIVE NO. 1, SCHEDULE B.
 - 2 PULVERIZE IN PLACE THE EXISTING AC AND NATIVE MATERIAL FOR A DEPTH OF 0.40' BELOW THE EXISTING TOP OF PAVEMENT SURFACE, ADD 2% CEMENT TO PULVERIZED MATERIAL AND THEN COMPACT TO 95% RELATIVE COMPACTION. APPLY PRIME COAT TO COMPACTED CEMENT TREATED SUBGRADE. PLACE 0.45' OF TYPE "A" 3/4" AGGREGATE GRADATION, PG 64-28PM HOT MIX ASPHALT.
 - 3 PLACE VARIABLE THICKNESS OVERLAY TO MEET EXISTING ASPHALT PAVING.
 - 4 CONSTRUCT 6' WIDE SHOULDER BACKING PER DETAIL ON SHEET 3.
 - 5 CONSTRUCT ASPHALT CUTOFF WALL 1' WIDE X 4' DEEP PER TYPICAL SECTION ON SHEET 3.
 - 6 COLD PLANE EXISTING ASPHALT 0.15' THK MIN.



FILE NO. 588575 030

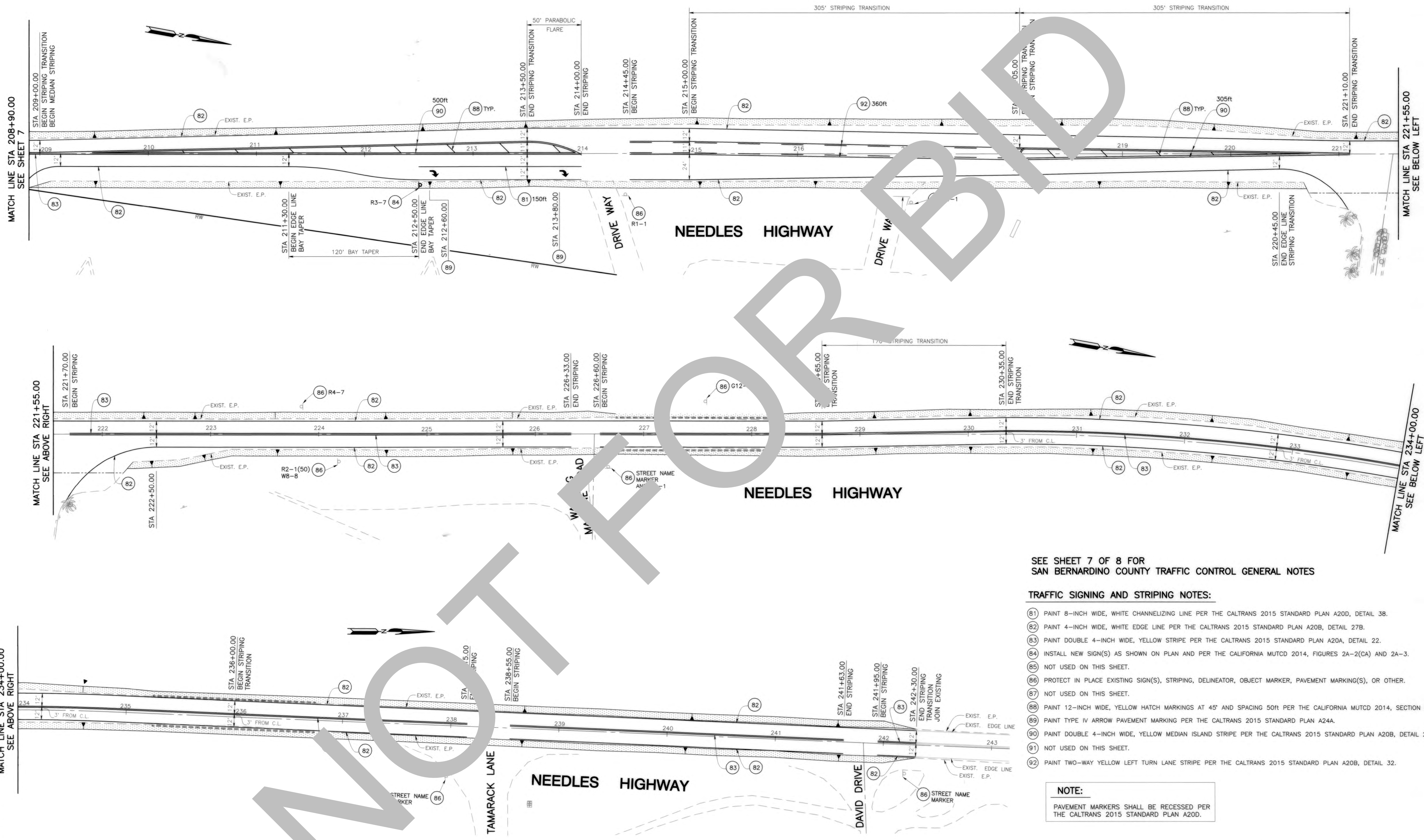
MARK	CHANGES	RESIDENT ENGINEER	DATE
	NO CHANGES		

FIELD CHANGES



SAN BERNARDINO COUNTY DEPARTMENT OF PUBLIC WORKS			
DESIGNED BY: DJ	DRAWN BY: CBB	CHECKED BY: TB	RECOMMENDED BY: Mervat N. Mikail, P.E. ENGINEERING MANAGER DATE: 1/19/2022
APPROVED BY: THOMAS BUSTAMANTE, P.E. SUPERVISING ENGINEER DATE: 1/20/22			APPROVED BY: NOEL CASTILLO, P.E. DEPUTY DIRECTOR DATE: 1/26/22

NEEDLES HIGHWAY SEGMENT 1B	
PLAN NEEDLES HIGHWAY	
FROM STA. 234+00.00 TO STA. 242+30.00	
J.L. REF. JL10371	W.O. NO. H14876
PLAN SCALE 1"=40'	SHT. NO. 6
TOT. SH'TS. 8	



SEE SHEET 7 OF 8 FOR
SAN BERNARDINO COUNTY TRAFFIC CONTROL GENERAL NOTES

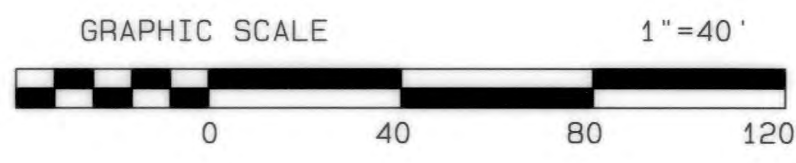
TRAFFIC SIGNING AND STRIPING NOTES:

- (81) PAINT 8-INCH WIDE, WHITE CHANNELIZING LINE PER THE CALTRANS 2015 STANDARD PLAN A20D, DETAIL 3B.
- (82) PAINT 4-INCH WIDE, WHITE EDGE LINE PER THE CALTRANS 2015 STANDARD PLAN A20B, DETAIL 27B.
- (83) PAINT DOUBLE 4-INCH WIDE, YELLOW STRIPE PER THE CALTRANS 2015 STANDARD PLAN A20A, DETAIL 22.
- (84) INSTALL NEW SIGN(S) AS SHOWN ON PLAN AND PER THE CALIFORNIA MUTCD 2014, FIGURES 2A-2(CA) AND 2A-3.
- (85) NOT USED ON THIS SHEET.
- (86) PROTECT IN PLACE EXISTING SIGN(S), STRIPING, DELINEATOR, OBJECT MARKER, PAVEMENT MARKING(S), OR OTHER.
- (87) NOT USED ON THIS SHEET.
- (88) PAINT 12-INCH WIDE, YELLOW HATCH MARKINGS AT 45° AND SPACING 50FT PER THE CALIFORNIA MUTCD 2014, SECTION 3B.24.
- (89) PAINT TYPE IV ARROW PAVEMENT MARKING PER THE CALTRANS 2015 STANDARD PLAN A24A.
- (90) PAINT DOUBLE 4-INCH WIDE, YELLOW MEDIAN ISLAND STRIPE PER THE CALTRANS 2015 STANDARD PLAN A20B, DETAIL 29.
- (91) NOT USED ON THIS SHEET.
- (92) PAINT TWO-WAY YELLOW LEFT TURN LANE STRIPE PER THE CALTRANS 2015 STANDARD PLAN A20B, DETAIL 32.

NOTE:
PAVEMENT MARKERS SHALL BE RECESSED PER THE CALTRANS 2015 STANDARD PLAN A20D.

MARK	REVISIONS	DATE

MARK	REVISIONS	DATE



MARK	CHANGES	RESIDENT ENGINEER	DATE



SAN BERNARDINO COUNTY DEPARTMENT OF PUBLIC WORKS			
DESIGNED BY J.H.C.	DRAWN BY H.F.	CHECKED BY J.J./J.H.C.	RECOMMENDED BY NOEL CASTILLO, P.E. DEPUTY DIRECTOR 1/24/22
SUBMITTED BY JEREMY JOHNSON, P.E. ENGINEERING MANAGER 01/10/22		APPROVED BY: David R. Doublet DAVID R. DOUBLET, M.S., P.E. ASSISTANT DIRECTOR 1/13/22	

NEEDLES HIGHWAY SEGMENT 1B				
FROM STATION 208+90.00 TO STATION 242+30.00				
TRAFFIC SIGNING AND STRIPING PLAN				
NEEDLES AREA				
J.L. REF. JL10371	W.O. NO. H14876	SCALE 1" = 40'	SHEET NO. 8	TOTAL SHT'S. 8