



**PUBLIC HEARING FOR THE FORMATION
OF UNDERGROUND UTILITY DISTRICTS
FOR MISSION BOULEVARD, VALLEY
BOULEVARD, AND BEECH AVENUE**

Department of Public Works

Presented By: Noel Castillo, Director
May 20, 2025



INTRODUCTION

The California Public Utilities Commission (CPUC) Rule 20A allows utilities to allocate funds, defined as work credit, to communities, to convert overhead electric facilities to underground utilities.

The Rule 20A Program (Program) primarily focuses on undergrounding overhead power lines for aesthetic and public benefit purposes, such as reducing visual clutter in communities.

San Bernardino County has been approved for \$14,604,183 in Program Funds for qualified projects.

Formation of the Underground Utility Districts (Districts) is required under both CPUC Rule 20A and Section 67.0205 of the San Bernardino County Code to allow for the use of Rule 20A funds for project implementation. Once formed, the Districts will remain in effect indefinitely, and any future utility installation or replacement within the boundaries of these Districts must be constructed underground.

CRITERIA

The Program projects must be in the public interest, meaning they must meet one or more of the following criteria:

- Eliminate an unusually heavy concentration of overhead lines
- Involve a street or road with a high volume of public traffic (Average Daily Traffic > 5,000)
- Benefit a civic or public recreation area or area of unusual scenic interest
- Be listed as an arterial street or major collector as defined in the Governor's Office of Planning and Research (OPR) Guidelines
- Wheelchair access is limited or impeded by existing above-ground electric and/or telecommunications infrastructure

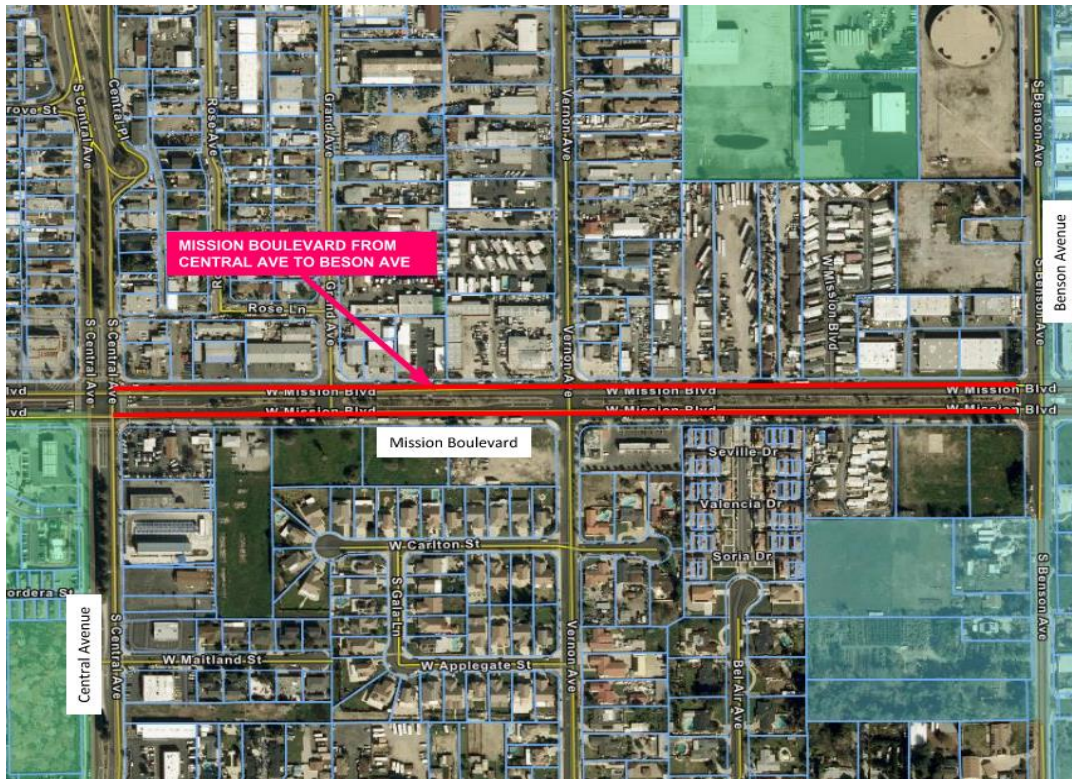
CANDIDATE LIST AND EVALUATION

Road	Description	Supervisorial District	Counts (ADT)	Length (mile)	Underground Power Pole Type	Heavy Concentration of Overhead Lines Yes / No	Heavy Traffic Volume (min of 5,000 avg trips/day) Yes / No	Impeded Wheelchair Access or Sidewalk Yes / No	Civic or Public Recreation Area Yes / No	Arterial or Major Collector Road Yes / No
Mission Blvd	Central Ave to Benson Ave	4	10940	0.5	Distribution	Yes	Yes	Yes	Yes	Yes
Valley Blvd	Cedar Ave to Spruce Ave	5	14297	0.5	Distribution	Yes	Yes	Yes	Yes	Yes
Beech Avenue	Foothill Blvd to Fontana Ave	2	6778	2.25	Distribution	Yes	Yes	Yes	Yes	Yes
Valley Blvd	Cedar Ave to Locust Ave	5	14297	0.82	Transmission	Yes	Yes	Yes	Yes	Yes
Cedar Ave	Valley Blvd to Randall Ave	5	14056	1.00	Transmission Tele-Communication	Yes	Yes	Yes	Yes	Yes
San Bernardino Avenue	Cherry Ave to Fontana Ave	5	9091	1.25	Transmission	Yes	Yes	Yes	Yes	Yes
Jurupa Avenue	Locust Ave to Lilac Ave	5	4709	2.25	Transmission	Yes	No	Yes	Yes	Yes
Crafton Avenue	San Bernardino Ave to Menton Ave	3	6209	1.0	Transmission	Yes	Yes	Yes	Yes	Yes
N Cajon Blvd in the Cajon Pass	in Cajon Pass	2, 3	9245	1.61	Distribution	No	Yes	No	No	No
Cajon Blvd	North of Kenwood Ave	3	9914	0.17	Distribution	No	Yes	No	No	No
Lytle Creek Road	North of Glen Helen Pkwy	3	3026	8.08	Distribution	No	No	No	No	No
Mountain Ave north of San Antonio Heights	North of Euclid Ave	2	288	1.91	Distribution	No	No	Yes	Yes	No
Lake Drive in Crestline	Northeast of Lake Dr	3	42	0.8	Distribution	No	No	No	Yes	No
Lake Drive in Crestline	Northeast of Wildrose Ln	3	9243	0.35	Distribution	No	Yes	No	Yes	No
Lake Drive in Crestline	Northeast of Lake Gregory	3	3665	1.26	Distribution	No	No	No	Yes	No
Summit Valley Road	North of State Highway 138	1	7250	1.88	Distribution	No	Yes	No	No	No
Newmark Ave	North of 40 th Street for 500 feet	5	300	0.1	Distribution	No	No	No	Yes	No

MISSION BOULEVARD UNDERGROUND UTILITIES DISTRICT

Mission Boulevard

- Project Limits:
 - Central Avenue to Benson Avenue, Montclair Area
- Project Length: 0.5 miles
- Supervisorial District 4



VALLEY BOULEVARD UNDERGROUND UTILITIES DISTRICT

Valley Boulevard

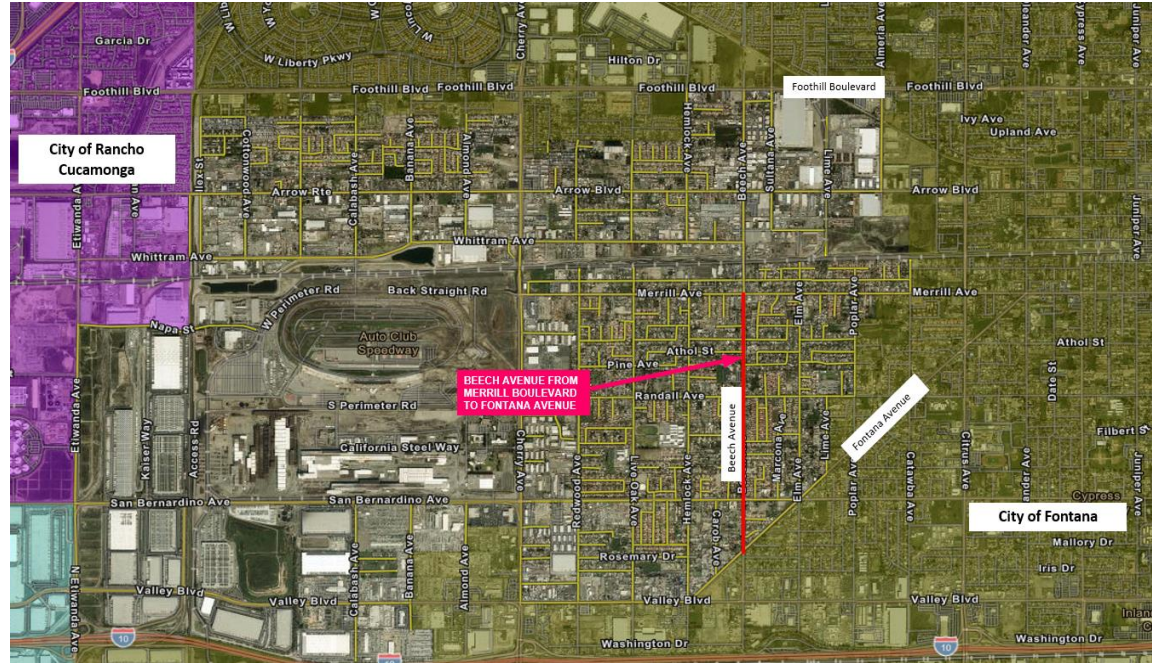
- Project Limits:
 - Cedar Avenue to Spruce Avenue, Bloomington Area
- Project Length: 0.5 miles
- Supervisorial District 5



BEECH AVENUE UNDERGROUND UTILITIES DISTRICT

Beech Avenue

- Project Limits:
 - Merrill Ave to Fontana Avenue, Fontana Area
- Project Length: 1 mile
- Supervisorial District 2





BOARD ACTIONS AND NEXT STEPS

On April 29, 2025, the Board adopted Resolution No. 2025-78 declaring its intent to form the Districts.

All affected utilities and property owners have been notified of the intent to place overhead utility lines underground within the proposed Districts.

Upon final action by the Board to form the Districts, Southern California Edison will perform the undergrounding work at no cost to the County or to the affected property owners.



Thank You | Questions?