

**WARNING:** ALL INDIVIDUALS INTERESTED IN BIDDING ON THIS PROJECT MUST OBTAIN THE FINAL PLANS AND SPECIFICATIONS FROM THE DEPARTMENT MANAGING THE PROJECT OR AS OTHERWISE STATED IN THE ADVERTISEMENT FOR BIDS FOR THE PROJECT. DO NOT USE THE PLANS AND SPECIFICATIONS POSTED ON THE CLERK OF THE BOARD'S WEBSITE FOR BIDDING ON THIS PROJECT.

# SAN BERNARDINO COUNTY DEPARTMENT OF PUBLIC WORKS

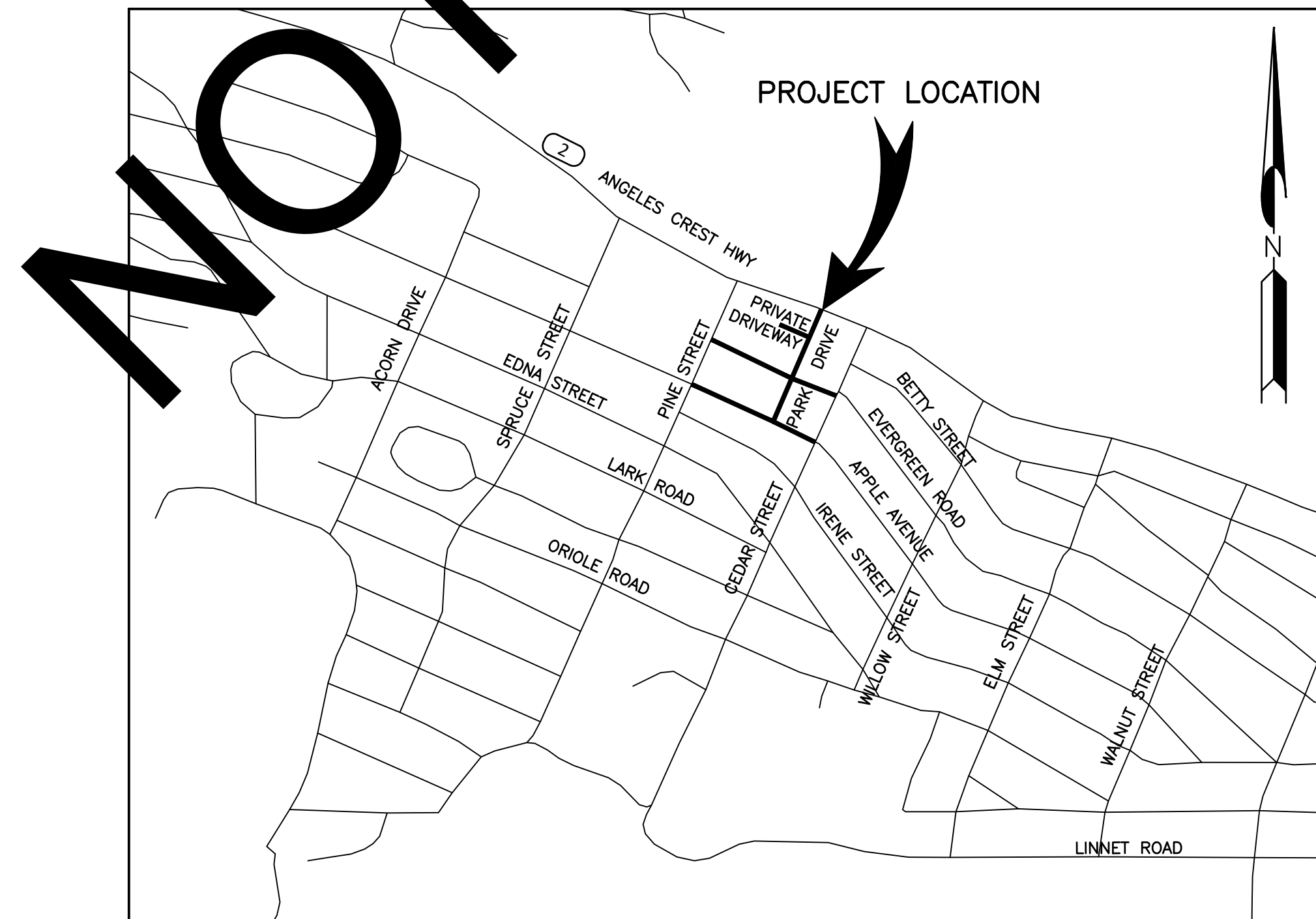


## TRANSPORTATION PLANS FOR CONSTRUCTION ON PARK DRIVE AND OTHER ROADS VARIOUS LIMITS

### WRIGHTWOOD AREA ADA RAMPS AND PAVEMENT IMPROVEMENT PROJECT

WORK ORDER NO. H15118 ROAD NO. 640600-010, 124150-010 & 336700-010

LENGTH = 0.35 MILES



**LOCATION MAP**  
NOT TO SCALE

#### SAN BERNARDINO COUNTY

APPROVED BY: \_\_\_\_\_  
BRENDON P. BIGGS, M.S., P.E., DIRECTOR OF PUBLIC WORKS R.C.E. 57127

DATE

APPROVED BY: \_\_\_\_\_  
NOEL CASTILLO, P.E., ASSISTANT DIRECTOR OF PUBLIC WORKS R.C.E. 78044

DATE

MARK	CHANGES	RESIDENT ENGINEER	DATE
	NO CHANGES		
FIELD CHANGES			
	SHT. NO.	TOT. SHTS.	
	1	7	

MARK	DATE
APPR.	
REVISIONS	
MARK	DATE
APPR.	
REVISIONS	
MARK	DATE
APPR.	
REVISIONS	

**INDEX OF SHEETS**

- 1 TITLE SHEET
- 2 PROJECT NOTES, INDEX OF SHEET AND LEGEND
- 3 TYPICAL SECTIONS
- 4 PARK DRIVE PLAN AND PROFILE
- 5 RAMPS 3, 4 & 5 PLAN AND PROFILE
- 6 RAMP 1, 2 & CONCRETE DRAINAGE SWALE PLAN AND PROFILE
- 7 MILL AND OVERLAY PLAN AND AERIAL VIEW
- 8 SIGNING AND STRIPING

THE FOLLOWING COUNTY STANDARDS ARE ATTACHED TO THE SPECIAL PROVISIONS:

- 303A 303B 109(M) 116(M)
- 117a 119(M) SPEC DWG 1 SPEC DWG 107(M)

TO BE SUPPLEMENTED BY THE FOLLOWING CALTRANS STANDARD PLANS DATED MAY 31, 2018:

- A20A A20B A20D A24C
- A24D A24E A62A
- A88A A88B A90A
- RS1 T9 T10 T13
- ES-7Q

TO BE SUPPLEMENTED BY THE FOLLOWING 2009 STANDARD PLANS FOR PUBLIC WORKS CONSTRUCTION:

606-3

TO BE SUPPLEMENTED BY THE FOLLOWING CALIFORNIA MUTCD DATED 2014 REV 2:

- FIGURE 2A-2(CA) FIGURE 6H-28
- FIGURE 2C-2 FIGURE 6H-29
- FIGURE 2C-13(CA) SECTION 6D.01
- FIGURE 3B-102(CA) SECTION 6D.02

THIS PROJECT REQUIRES A CONTRACTOR'S LICENSE CLASS "A" OR C12

**GENERAL NOTES**

U. THE FACT THAT ANY UTILITY FACILITY IS SHOWN OR NOT SHOWN UPON THE PLANS SHALL NOT RELIEVE THE CONTRACTOR OF THE RESPONSIBILITY UNDER SECTION 5-1.36D "NON-HIGHWAY FACILITIES," OF THE CALTRANS STANDARD SPECIFICATIONS. IT SHALL BE THE CONTRACTOR'S RESPONSIBILITY, PURSUANT THERETO, TO ASCERTAIN THE LOCATION OF ANY UTILITY FACILITY WHICH MAY BE SUBJECT TO DAMAGE BY REASON OF THE CONTRACTOR'S OPERATIONS.

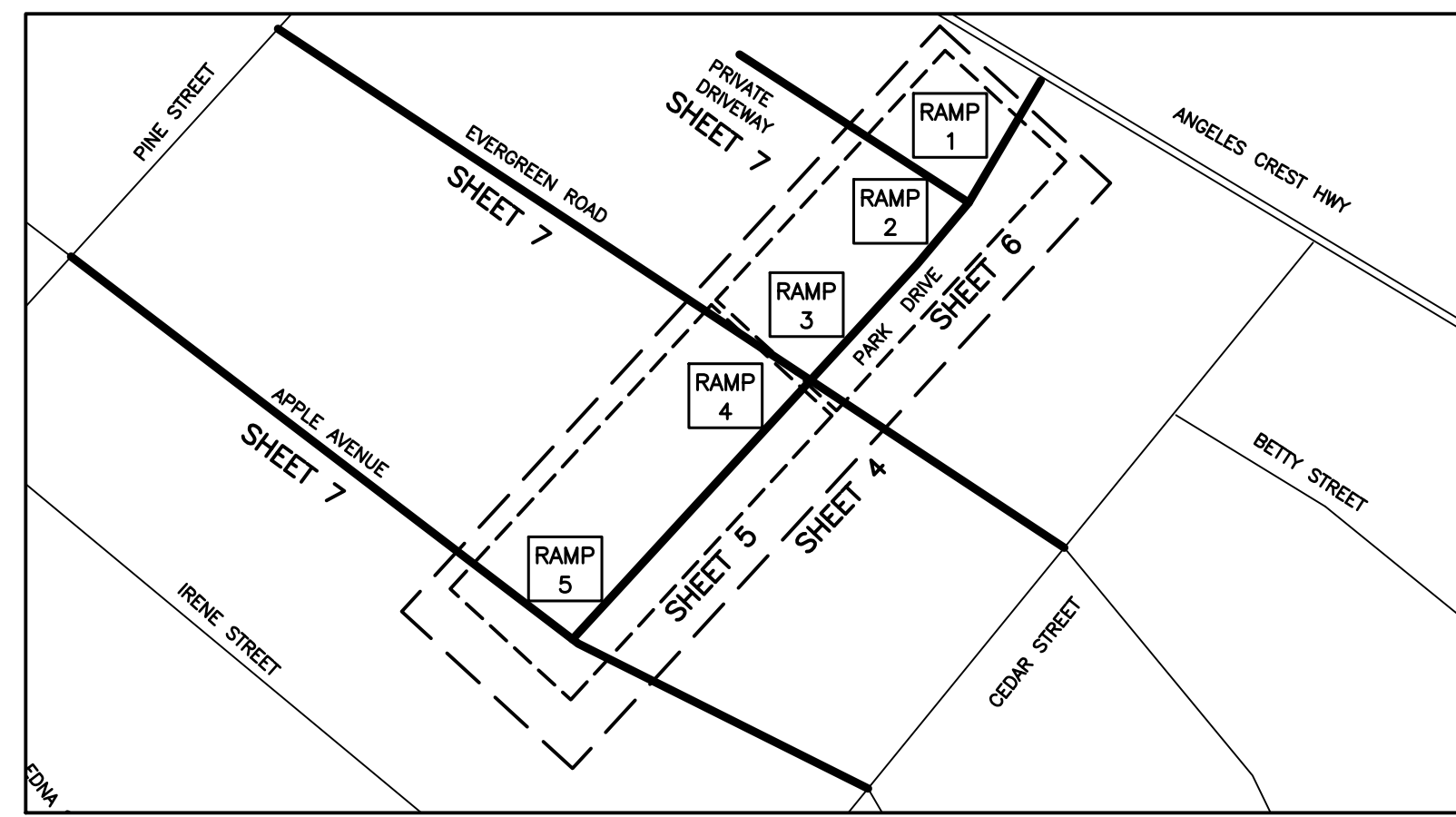
1. ALL STATIONING NOTES ON PLAN REFER TO THE CL SUR PARK DRIVE AND CL SUR APPLE DRIVE.
2. DIMENSIONS ARE SUBJECT TO TOLERANCES SPECIFIED IN THE CALTRANS STANDARD SPECIFICATIONS.
3. ALL PAVEMENT WIDTH DIMENSIONS SHOWN ON THE PLANS ARE TO THE EDGE OF PAVEMENT OR TO THE TOP OF CURB, UNLESS OTHERWISE NOTED.
4. TRANSITIONS AND WARPING SHALL BE AS SHOWN AND AS DETERMINED BY THE ENGINEER.
5. ASPHALT CONCRETE OVERLAYS SHALL BE FEATHERED TO MEET EXISTING AS SHOWN ON THE PLANS OR AS DETERMINED BY THE ENGINEER.
6. ALL TREES & VEGETATION OUTSIDE THE LIMITS OF EXCAVATION AND EMBANKMENT SLOPE LINES, SHALL BE PROTECTED IN PLACE.

**BASIS OF BEARINGS:**

THE CENTERLINE OF PARK DRIVE BETWEEN APPLE DRIVE & HIGHWAY 2 (PTB-PT2) PER TR 3237, MB 43/43-44, BEING N23°30'00"E

**BENCH MARK:**

FD BRASS DISK STAMPED "72-17-10" IN TOP OF CURB, 180' E/O AND 35' N/O THE INTERSECTION OF SH.2 AND PARK DRIVE PER CSFB 4116/270. (SPSN 00929) NGVD-29 ELEVATION = 5921.660'



INDEX MAP  
NTS

**RAMP SCHEDULE**

RAMP LOCATION	CROSS STREET	QUADRANT	RAMP NO.	RAMP CASE	SHEET
PARK DRIVE	PRIVATE DRIVE	NW	1	CASE CM MODIFIED	6
PARK DRIVE	PRIVATE DRIVE	SW	2	CASE CM MODIFIED	6
PARK DRIVE	EVERGREEN ROAD	NW	3	CASE CM MODIFIED	6
PARK DRIVE	EVERGREEN ROAD	SW	4	CASE CM MODIFIED	5
PARK DRIVE	APPLE AVENUE	NW	5	CASE CH	5

**SAN BERNARDINO COUNTY TRAFFIC CONTROL GENERAL NOTES :**

- 1- ALL SIGNING, STRIPING AND PAVEMENT MARKINGS SHALL BE IN CONFORMANCE WITH THE CALIFORNIA MUTCD LATEST EDITION.
- 2- ALL STRIPING AND PAVEMENT MARKINGS SHALL BE PAINTED IN CONFORMANCE WITH THE 2018 CALTRANS STANDARD PLANS DATED MAY 30, 2018.
- 3- ALL STRIPING (LONG LINE) AND PAVEMENT MARKINGS SHALL BE RETRO-REFLECTIVE PAINT.
- 4- ALL SIGNS SHALL BE OF HIGH INTENSITY (FHWA TYPE III/IV) RETRO-REFLECTIVE SHEETING EXCEPT:
  - A. "STOP" SIGNS SHALL BE DIAMOND GRADE (FHWA TYPE IX) IN RURAL SETTINGS AND TYPE IX IN URBAN SETTINGS) RETRO-REFLECTIVE SHEETING.
  - B. "NO PARKING" SIGNS SHALL BE OF SUPER ENGINEERING GRADE (FHWA TYPE II) RETRO-REFLECTIVE SHEETING.
  - C. SCHOOL SIGNS SHALL BE OF DIAMOND GRADE (FHWA TYPE IX) FLUORESCENT YELLOW-GREEN (FYG) RETRO-REFLECTIVE SHEETING.
  - D. STREET NAME MARKERS SHALL BE OF DIAMOND GRADE (FHWA TYPE IX) RETRO-REFLECTIVE SHEETING AND CONFORM TO COUNTY STANDARD 303.
  - E. CONSTRUCTION SIGNS SHALL BE OF DIAMOND GRADE (FHWA TYPE IX) FLUORESCENT ORANGE RETRO-REFLECTIVE SHEETING.
- 5- ALL DELINEATORS, CHANNELIZERS, AND OBJECT MARKERS SHALL BE OF (FHWA TYPE VII) RETRO-REFLECTIVE SHEETING.
- 6- SIGNS SHALL BE MOUNTED ON METAL POSTS SIMILAR TO COUNTY STANDARDS 303(a) AND 303(b).
- 7- ALL CONFLICTING STRIPING AND PAVEMENT MARKINGS NOT SHOWN ON PLANS SHALL BE REMOVED BY THE CONTRACTOR. REMOVAL SHALL BE ACCOMPLISHED BY SANDBLASTING, GRINDING, OR AS DIRECTED BY COUNTY REPRESENTATIVE.
- 8- ALL CONFLICTING SIGNS SHALL BE REMOVED, RELOCATED, OR COVERED BY THE CONTRACTOR. RELOCATABLE SIGNS SHALL BE INSTALLED AS SPECIFIED ON THE PLANS OR AS DIRECTED BY COUNTY REPRESENTATIVE.
- 9- UNPROTECTED LOCATIONS RESULTING IN ISOLATED ABRUPT DEPRESSIONS OR ELEVATED OBJECTS SHALL BE PROTECTED BY CURBS, SIDEWALKS, POWER POLES, END TREATMENT OF ASPHALT DIKES AND CONCRETE CURBS) AND DELINEATORS OR BARRIERS PER THE CALIFORNIA MUTCD LATEST EDITION.
- 10- ALL EXISTING SIGNING, STRIPING AND PAVEMENT MARKINGS (i.e. CROSS STREET STOP, STOP LIMIT LINE, AND CURB WALK PAVEMENT MARKINGS) NOT SHOWN ON PLANS, IF REMOVED/OBLITERATED, SHALL BE REPLACED OR STORED OF SAME KIND, AND IN CONFORMANCE WITH THE CALIFORNIA MUTCD LATEST EDITION.
- 11- THE CONTRACTOR SHALL NOTIFY COUNTY REPRESENTATIVE TO SCHEDULE A FINAL REVIEW (WALK THROUGH) WITH TRAFFIC DIVISION PERSONNEL FOR APPROVAL OF TRAFFIC CONTROL DEVICES PRIOR TO PROJECT ACCEPTANCE.

**ABBREVIATIONS LEGEND:**

- A.B. = AGGREGATE BASE
- AC = ASPHALT CONCRETE
- AP = ANGLE POINT
- AVE = AVENUE
- BEG = BEGIN/BEGINNING
- BCR = BEGIN CURB RETURN
- CL = CENTER LINE
- CLF = CHAIN LINK FENCE
- CONC. = CONCRETE
- CSFB = COUNTY SURVEY FIELD BOOK
- C&G = CURB AND GUTTER
- CR = CURB RETURN
- DWG = DRAWING
- DR = DRIVE
- ECR = END CURB RETURN
- EG = EXISTING GROUND
- ELEV = ELEVATION
- EP = EDGE OF PAVEMENT
- EXIST = EXISTING
- FG = FINISHED GRADE
- FH = FIRE HYDRANT
- FL = FLOW LINE
- FS = FINISH SURFACE
- GB = GRADE BREAK
- GV = GAS VALVE
- HMA = HOT MIXED ASPHALT IMPROVEMENT
- IMP = IMPROVEMENT
- LOC = LENGTH OF CURVE
- L = LENGTH
- LT = LEFT
- MANH = MANHOLE
- MAX = MAXIMUM
- MIN = MINIMUM
- NTS = NOT TO SCALE
- OG = ORIGINAL GROUND
- PEC = PERMIT TO ENTER AND CONSTRUCT
- PI = POINT OF INTERSECTION
- PL = PROPERTY LINE
- PP = POWER POLE
- R = RADIUS
- RET = RETAINING
- RT = RIGHT
- R/W = RIGHT OF WAY
- SBC = SAN BERNARDINO COUNTY
- SHT = SHEET
- SSPWC = STANDARD SPECIFICATIONS FOR PUBLIC WORKS CONSTRUCTION
- STD = STANDARD
- ST = STREET
- STA = STATION
- SL = STREET LIGHT
- THK = THICKNESS
- TYP = TYPICAL
- VAR = VARIES
- SUR = SURVEY

**CONSTRUCTION MATERIALS**

- PLAN**
- COLD PLANE AND ASPHALT CONCRETE OVERLAY
  - ASPHALT CONCRETE PAVEMENT
  - GROUDED ROCK PAVING
  - PORTLAND CEMENT CONCRETE
  - DETECTABLE WARNING SURFACE

**SECTION**

- ASPHALT CONCRETE OVERLAY
- ASPHALT CONCRETE PAVEMENT
- NATURAL GROUND
- PORTLAND CEMENT CONCRETE SECTION

**UNDERGROUND UTILITY LEGEND**

- GAS LINE \_\_\_\_\_ G
- SEWER MAIN LINE \_\_\_\_\_ S
- WATER LINE \_\_\_\_\_ W
- ELECTRIC LINE \_\_\_\_\_ E
- TELEPHONE LINE \_\_\_\_\_ T
- DATA/CABLE LINE \_\_\_\_\_ TF

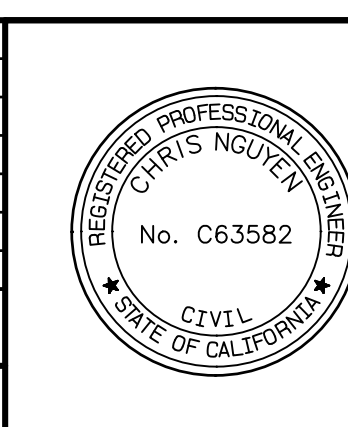
RAMP NUMBER LABEL

**CONSTRUCTION NOTES:**

- P PROTECT IN PLACE
- 1A COLD PLANE (0.15' THK) EXISTING ASPHALT CONCRETE PAVEMENT AND PLACE (0.15' THK) ASPHALT CONCRETE OVERLAY PER STRUCTURAL SECTION DETAIL SHEET 3
- 1B COLD PLANE (0.24' THK) EXISTING ASPHALT CONCRETE PAVEMENT AND PLACE (0.24' THK) ASPHALT CONCRETE OVERLAY PER STRUCTURAL SECTION DETAIL SHEET 3
- 2 SAWCUT AND REMOVE EXISTING ASPHALT CONCRETE SURFACING
- 3 SAWCUT AND REMOVE EXISTING CONCRETE SURFACING (RAMP, SIDEWALK, CROSS GUTTER, SWALE)
- 4 SAWCUT AND REMOVE EXISTING ASPHALT CONCRETE DIKE
- 5 SAWCUT AND REMOVE EXISTING CURB OR CURB AND GUTTER
- 6 PLACE ASPHALT CONCRETE TYPE A, 0.5" AGGREGATE GRADATION, PG 64-28PM HMA (SEE STRUCTURAL SECTION DETAIL, SHEET 3)
- 7 CONSTRUCT 10' WIDE CONCRETE DRAINAGE SWALE PER DETAIL A, SHEET 6
- 8 CONSTRUCT CROSS GUTTER PER COUNTY STD 119(M)
- 9 CONSTRUCT 6" CURB & GUTTER PER COUNTY STD 116(M)
- 10 CONSTRUCT COLORED AND STAMPED SIDEWALK & RAMP PER SPECIAL PROVISIONS CALTRANS STD A88B CASE PER PLAN
- 11 INSTALL 6" RETAINING CURB PER CALTRANS STD A88B
- 12 PLACE DETECTABLE WARNING SURFACE PER CALTRANS STD A88A
- 13 PLACE (0.33' THICK) COLORED AND STAMPED CONCRETE SIDEWALK TO MATCH EXISTING PER COUNTY STD 109 TYPE C(M)
- 14 PLACE (0.5' THICK) ASPHALT CONCRETE TYPE A, 0.5" AGGREGATE GRADATION, PG 64-28PM HMA OVER COMPACTED NATIVE SOIL PER DETAIL SHEET 3
- 15 PLACE GROUDED ROCK TREATMENT PER SPECIAL DRAWING 1
- 16 INSTALL PEDESTRIAN BARRICADE TYPE 1 PER CALTRANS 2018 STANDARD PLAN ES-70
- 17 REMOVE AND REPLACE METAL HAND RAIL IN KIND PER SSPWC 606-3 TYPE A, AS SHOWN ON PLAN
- 18 PLACE ASPHALT CONCRETE DIKE TRANSITION PER COUNTY STANDARD 117a AND SPEC DWG 107(M)
- 19 ADJUST WATER METER BOX TO GRADE
- 20 PAINT 12-INCH WIDE, SOLID WHITE LIMIT LINE PER CALTRANS 2018 STANDARD PLAN A24E
- 21 PAINT "STOP" PAVEMENT MARKING PER CALTRANS 2018 STANDARD PLAN A24D AS SHOWN ON PLAN
- 22 PAINT DOUBLE 6-INCH WIDE, CENTER YELLOW STRIPE PER CALTRANS 2018 STANDARD PLAN A20A, DETAIL 22
- 23 PAINT 4-INCH WIDE SOLID WHITE PARKING STRIPE AT 45 DEGREES AS SHOWN ON PLAN
- 24 PAINT 4-INCH WIDE SOLID BLUE ADA PARKING STRIPE PER CALTRANS 2018 STANDARD PLAN A90A
- 25 PAINT INTERNATIONAL SYMBOL OF ACCESSIBILITY (ISA) MARKING PER 2018 CALTRANS STANDARD PLAN A24C
- 26 PAINT 6-INCH WIDE, EDGE LINE STRIPE PER CALTRANS 2018 STANDARD PLAN A20B, DETAIL 27B
- 27 PAINT "NO PARKING" PAVEMENT MARKING PER CALTRANS 2018 STANDARD PLAN A24E AS SHOWN ON PLAN
- 28 PAINT 4-INCH WIDE SOLID HATCH PARKING STRIPES AT 3FT SPACING AS SHOWN ON PLAN.
- 29 PAINT SPEED LIMIT, PAVEMENT MARKING PER CAL TRANS 2018 STANDARD PLAN A24C.
- 30 PROTECT EXISTING STRIPING IN PLACE, REPAINT IF DAMAGED
- 31 INSTALL RECESSED PAVEMENT MARKER PER CALTRANS 2018 STANDARD PLAN A20A, DETAIL 22
- 32 INSTALL RECESSED PAVEMENT MARKER (RETROREFLECTIVE - BLUE) FOR EXISTING FIRE HYDRANTS PER PLAN, PER THE CALIFORNIA MUTCD DATED 2014, FIGURE 3B-102(CA)
- 33 RESET ROADSIDE SIGN PER THE CA MUTCD 2014, FIGURE 2A-2(CA)
- 34 RELOCATE ROADSIDE SIGN PER THE CA MUTCD 2014, FIGURE 2A-2(CA) AS SHOWN ON PLAN
- 35 INSTALL ROADSIDE SIGN PER THE CA MUTCD 2014, FIGURE 2A-2(CA) AS SHOWN ON PLAN
- 36 INSTALL TYPE L-1(CA) OM2-2V OBJECT MARKER PER THE CA MUTCD 2014, FIGURE 2A-2(CA) AS SHOWN ON PLAN
- 37 POTHOLE TO VERIFY UTILITY LOCATION AND DEPTH
- 38 CONSTRUCT ASPHALT CONCRETE ROLLED BERM, SEE DETAIL B SHEET 7
- 39 CONSTRUCT ASPHALT CONCRETE TRAVERSABLE DIKE PER COUNTY STD 117a

MARK	CHANGES	RESIDENT ENGINEER	DATE
	NO CHANGES		

**FIELD CHANGES**



SAN BERNARDINO COUNTY DEPARTMENT OF PUBLIC WORKS			
DESIGNED BY:	DRAWN BY:	CHECKED BY:	RECOMMENDED BY:
JMH	JMH	ER/NM	CHRIS NGUYEN, P.E. ENGINEERING MANAGER
			APPROVED BY:
			MERVAT N. MIKHAIL, P.E. DEPUTY DIRECTOR

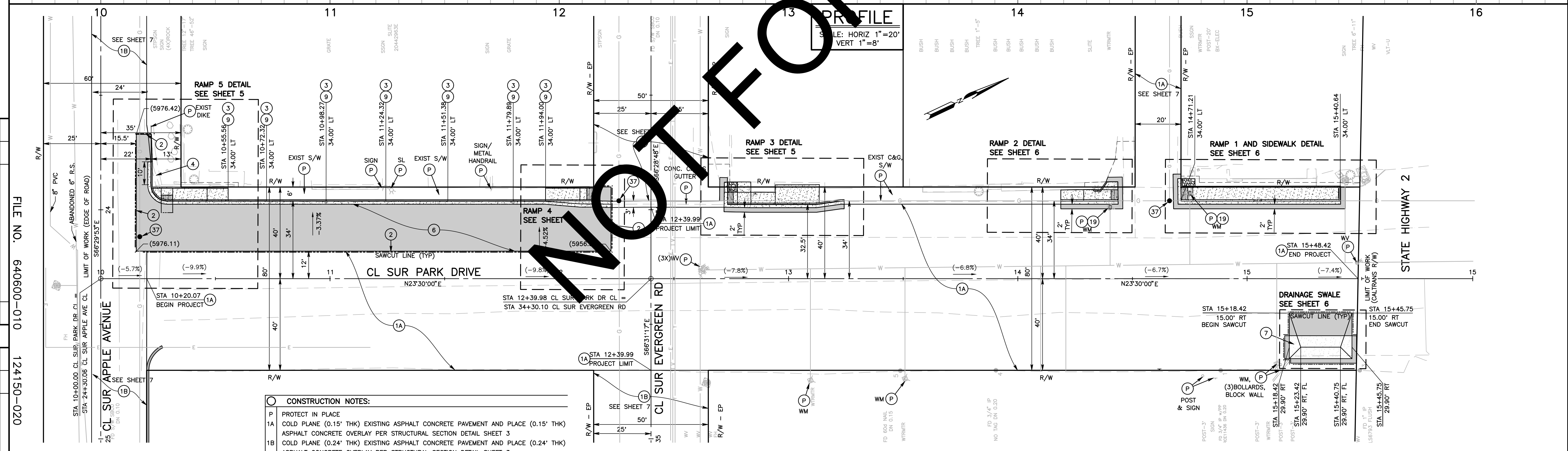
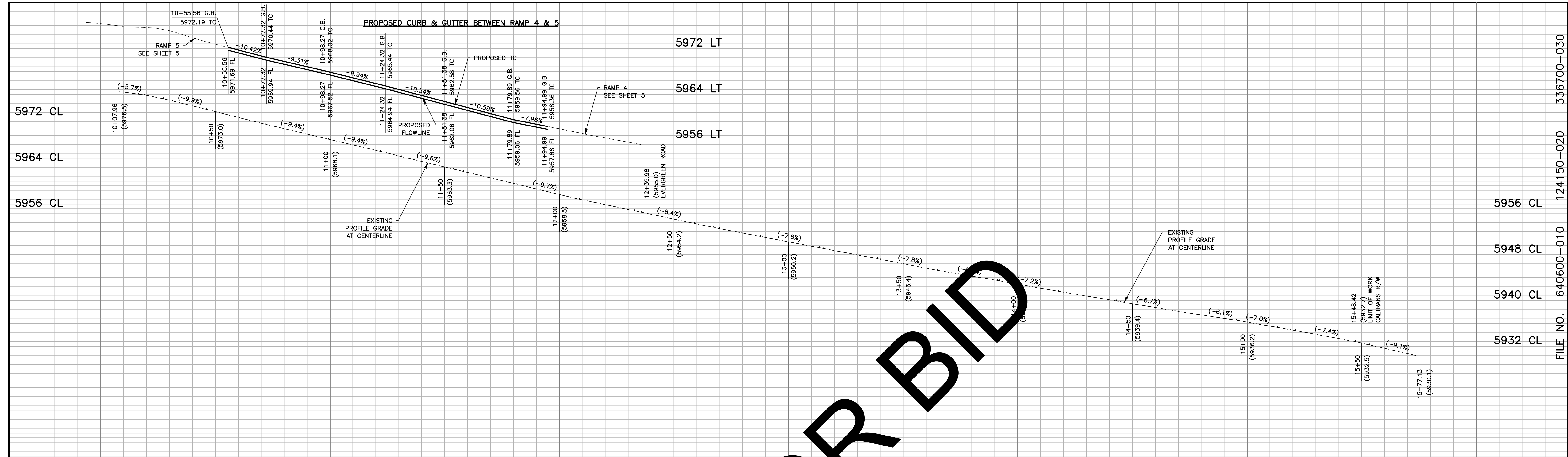
PARK DRIVE AND OTHER ROADS PROJECT NOTES, INDEX OF SHEET AND LEGEND WRIGHTWOOD AREA				
J.L. REF.	W.O. NO.	PLAN SCALE	SHT. NO.	TOT. SHTS.
12022	H15113	NTS	2	8

REVISIONS	DATE

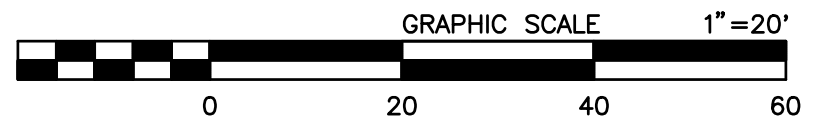
FILE NO. 640600-010 124150-020 336700-030

FILE NO. 640600-010 124150-020 336700-030





- CONSTRUCTION NOTES:**
- P PROTECT IN PLACE
  - 1A COLD PLANE (0.15' THK) EXISTING ASPHALT CONCRETE PAVEMENT AND PLACE (0.15' THK) ASPHALT CONCRETE OVERLAY PER STRUCTURAL SECTION DETAIL SHEET 3
  - 1B COLD PLANE (0.24' THK) EXISTING ASPHALT CONCRETE PAVEMENT AND PLACE (0.24' THK) ASPHALT CONCRETE OVERLAY PER STRUCTURAL SECTION DETAIL SHEET 3
  - 2 SAWCUT AND REMOVE EXISTING ASPHALT CONCRETE SURFACING
  - 3 SAWCUT AND REMOVE EXISTING CONCRETE SURFACING (SWALE)
  - 4 SAWCUT AND REMOVE EXISTING ASPHALT CONCRETE DIKE
  - 6 PLACE ASPHALT CONCRETE TYPE A, 0.5" AGGREGATE GRADATION, PG 64-28PM HMA (SEE STRUCTURAL SECTION DETAIL, SHEET 3)
  - 7 CONSTRUCT 10' WIDE CONCRETE DRAINAGE SWALE PER DETAIL A, SHEET 6
  - 9 CONSTRUCT 6" CURB & GUTTER PER COUNTY STD 116(M)
  - 19 ADJUST WATER METER BOX TO GRADE
  - 37 POTHOLE TO VERIFY UTILITY LOCATION AND DEPTH



MARK	CHANGES	RESIDENT ENGINEER	DATE
	NO CHANGES		

FIELD CHANGES

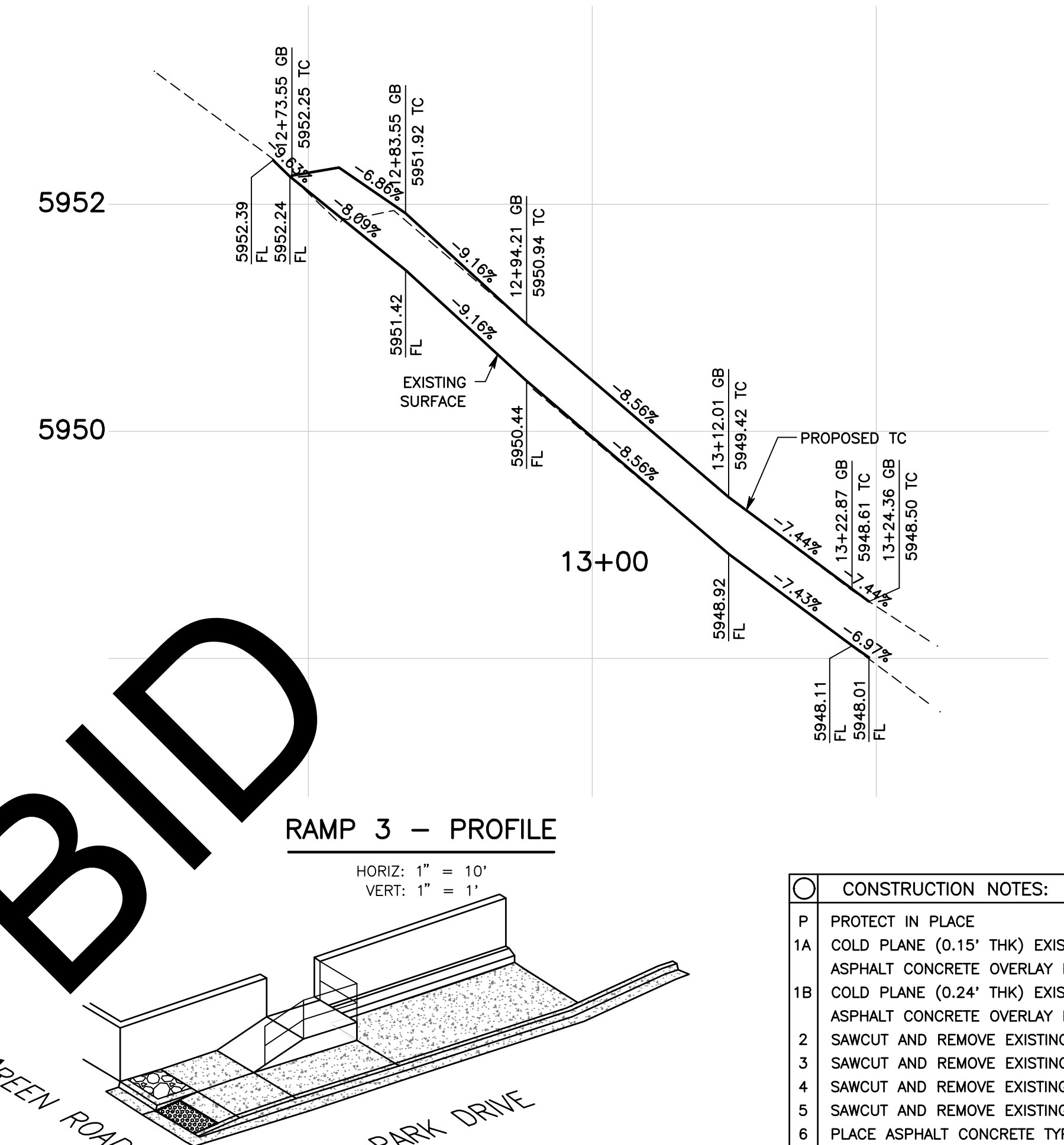
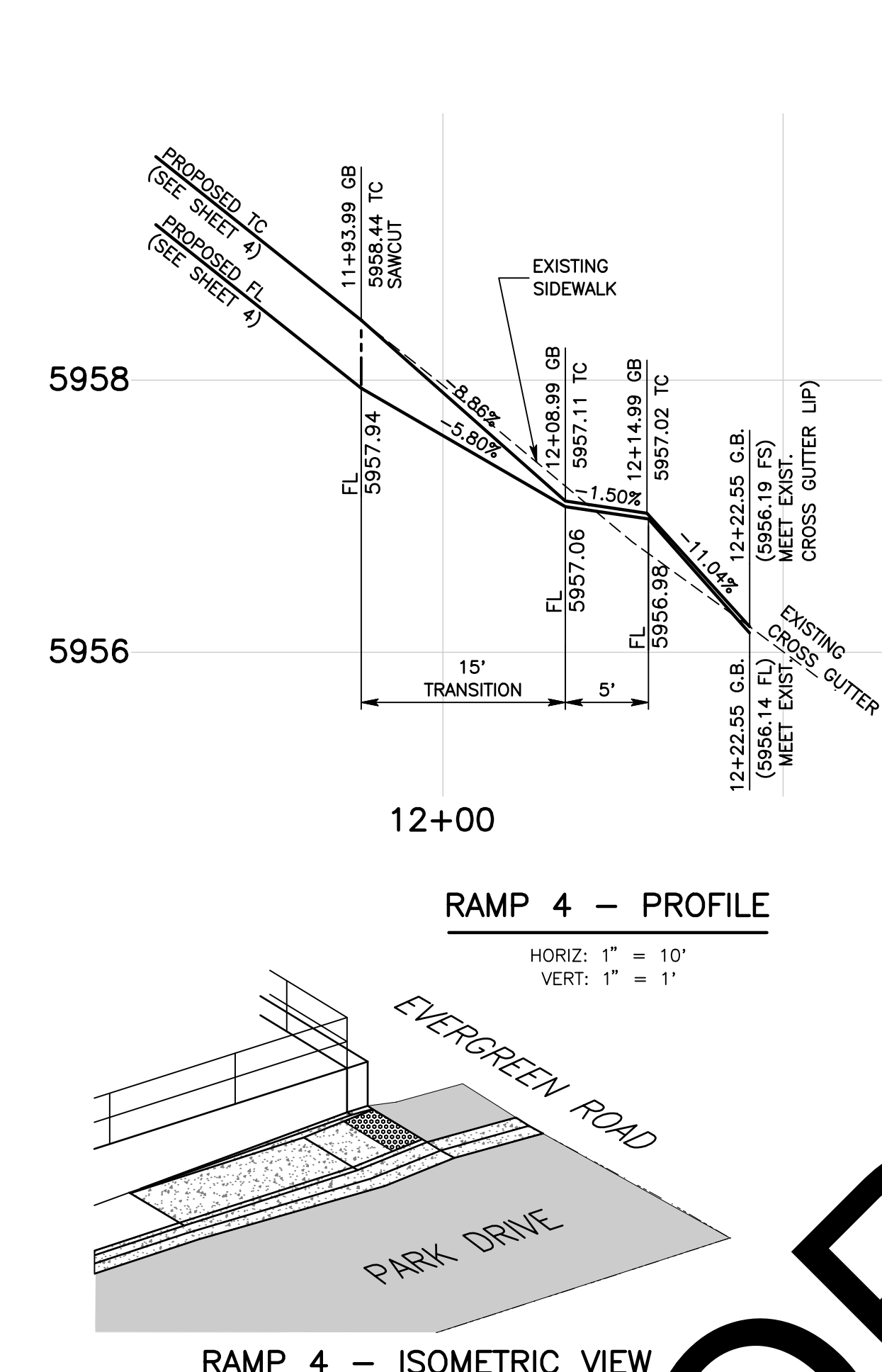
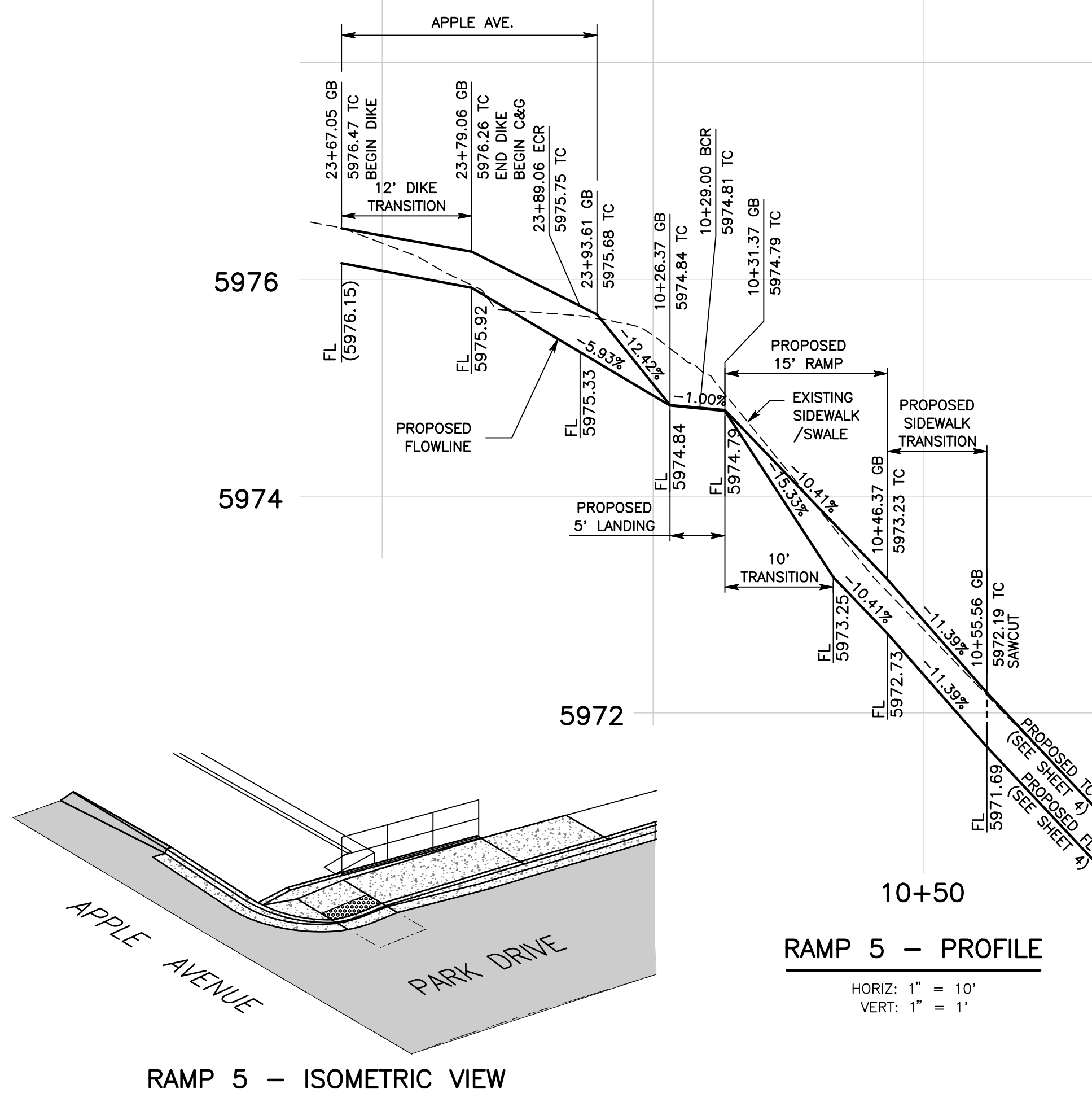


SAN BERNARDINO COUNTY DEPARTMENT OF PUBLIC WORKS			
DESIGNED BY:	DRAWN BY:	CHECKED BY:	RECOMMENDED BY:
JMH	JMH	ER/NM	CHRIS NGUYEN, P.E. ENGINEERING MANAGER
			APPROVED BY:
			MERVAT N. MIKHAIL, P.E. DEPUTY DIRECTOR

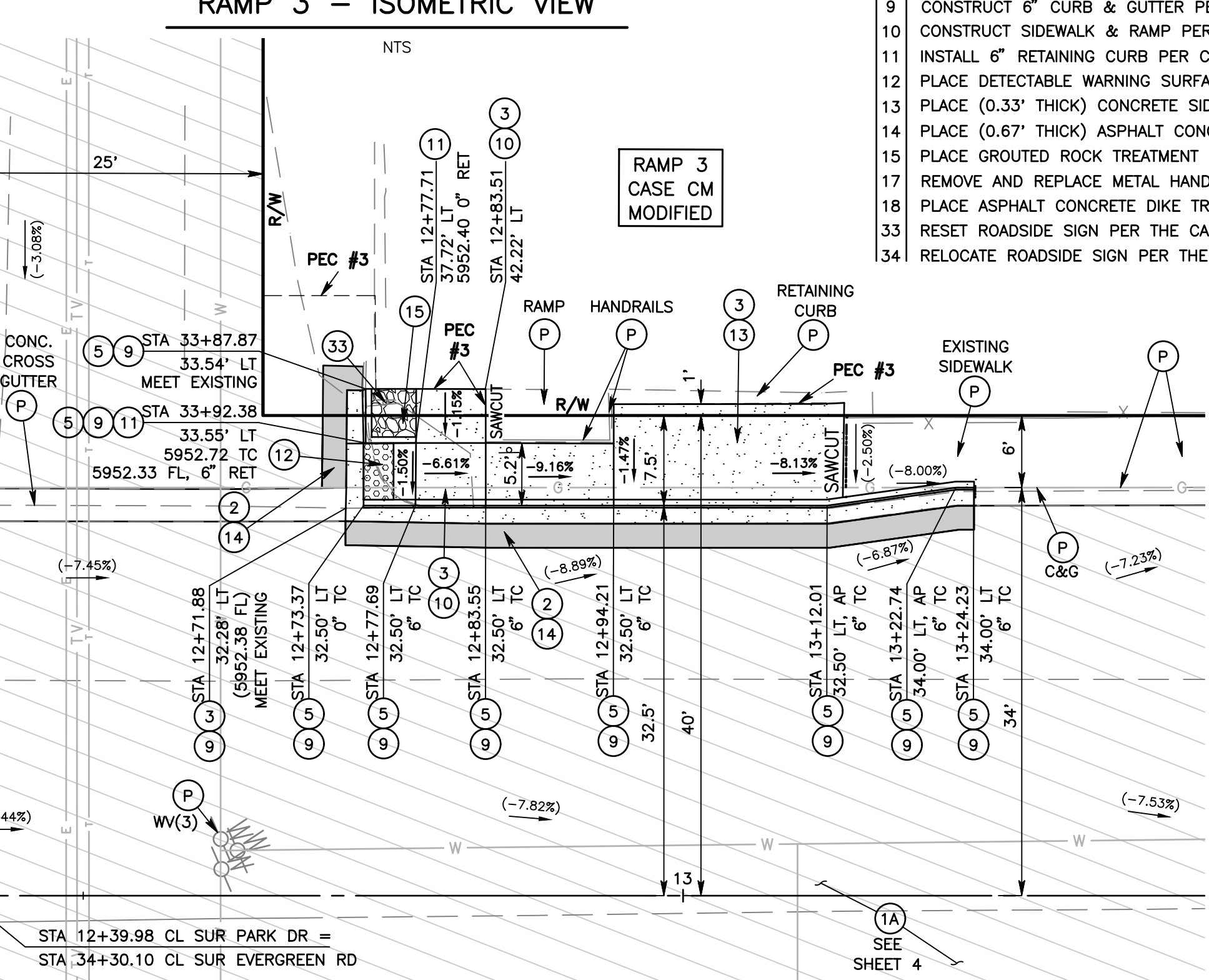
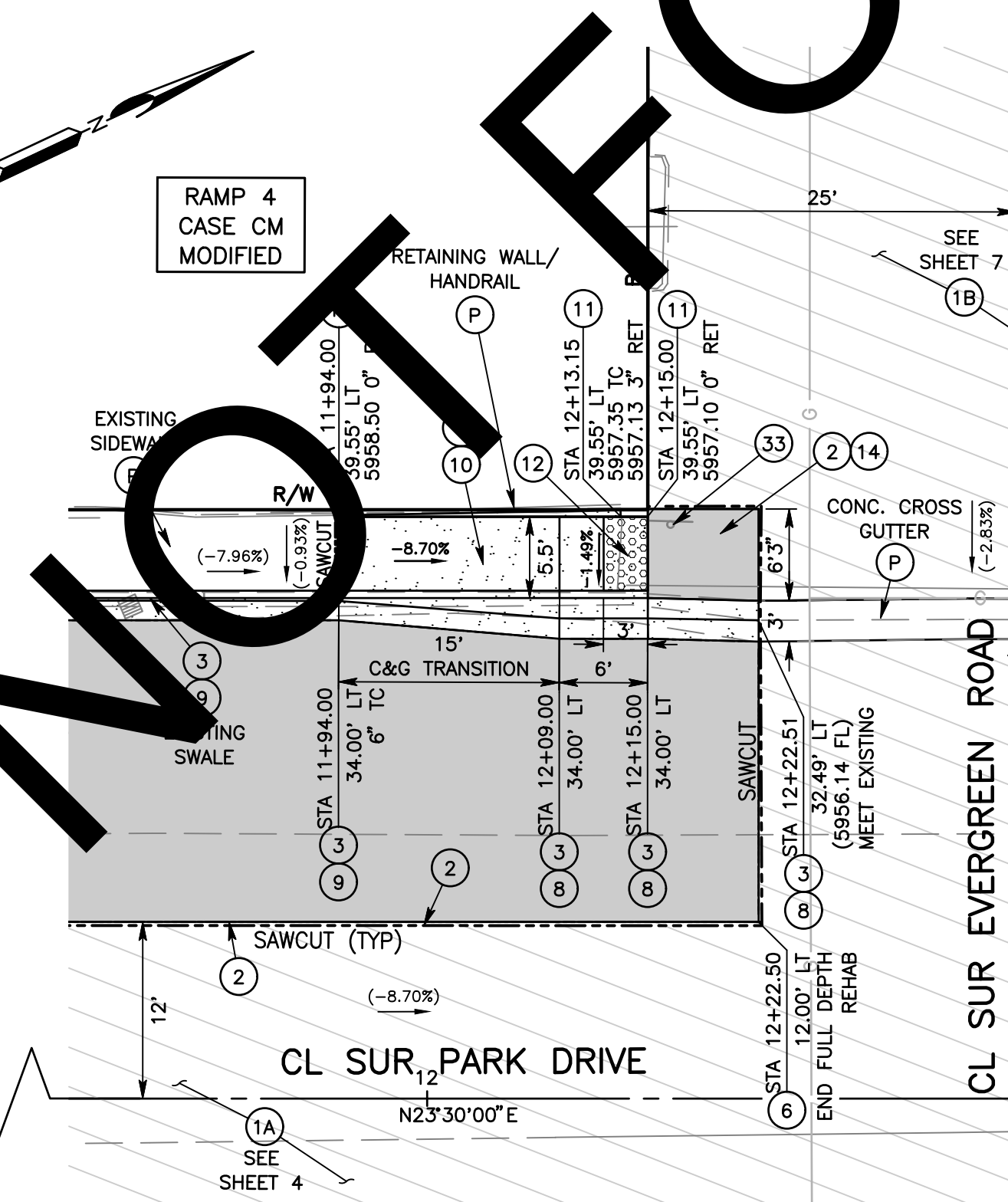
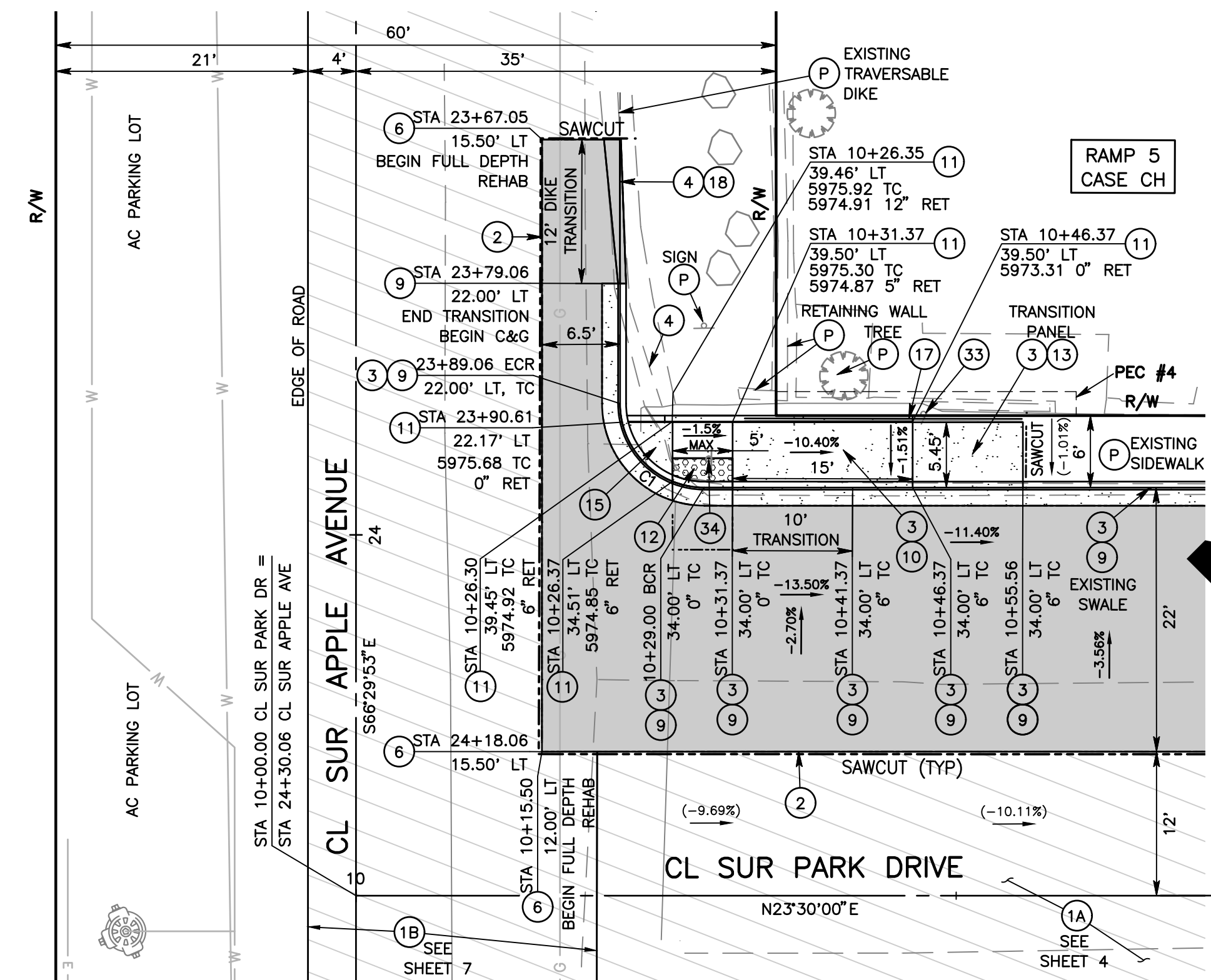
PARK DRIVE AND OTHER ROADS PARK DRIVE PLAN AND PROFILE STA 10+00 TO STA 12+00 WRIGHTWOOD AREA				
J.L. REF.	W.O. NO.	PLAN SCALE	SHT. NO.	TOT. SHTS.
12022	H15113	1"=20'	4	8

MARK	REVISIONS	DATE

FILE NO. 640600-010 124150-020 336700-030



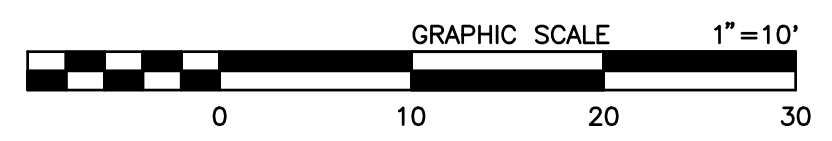
- CONSTRUCTION NOTES:**
- P PROTECT IN PLACE
  - 1A COLD PLANE (0.15' THK) EXISTING ASPHALT CONCRETE PAVEMENT AND PLACE (0.15' THK) ASPHALT CONCRETE OVERLAY PER STRUCTURAL SECTION DETAIL SHEET 3
  - 1B COLD PLANE (0.24' THK) EXISTING ASPHALT CONCRETE PAVEMENT AND PLACE (0.24' THK) ASPHALT CONCRETE OVERLAY PER STRUCTURAL SECTION DETAIL SHEET 3
  - 2 SAWCUT AND REMOVE EXISTING ASPHALT CONCRETE SURFACING
  - 3 SAWCUT AND REMOVE EXISTING CONCRETE SURFACING (RAMP, SIDEWALK, CROSS GUTTER, OR SWALE)
  - 4 SAWCUT AND REMOVE EXISTING ASPHALT CONCRETE DIKE
  - 5 SAWCUT AND REMOVE EXISTING CURB OR CURB AND GUTTER
  - 6 PLACE ASPHALT CONCRETE TYPE A, 0.5" AGGREGATE GRADATION, PG 64-28PM HMA (SEE STRUCTURAL SECTION DETAIL, SHEET 3)
  - 8 CONSTRUCT CROSS GUTTER PER COUNTY STD 119(M)
  - 9 CONSTRUCT 6" CURB & GUTTER PER COUNTY STD 116(M)
  - 10 CONSTRUCT SIDEWALK & RAMP PER CALTRANS STD AB8A/B CASE PER PLAN
  - 11 INSTALL 6" RETAINING CURB PER CALTRANS STD AB8A/B
  - 12 PLACE DETECTABLE WARNING SURFACE PER CALTRANS STD AB8A/B
  - 13 PLACE (0.33' THICK) CONCRETE SIDEWALK PER COUNTY STD 109 TYPE C(M)
  - 14 PLACE (0.67' THICK) ASPHALT CONCRETE OVER COMPACTED NATIVE SOIL
  - 15 PLACE GROUTED ROCK TREATMENT PER SPECIAL DRAWING 1
  - 17 REMOVE AND REPLACE METAL HAND RAIL IN KIND PER SSPWC 606-3 TYPE A, AS SHOWN ON PLAN
  - 18 PLACE ASPHALT CONCRETE DIKE TRANSITION PER COUNTY STANDARD 117a AND SPEC DWG 107(M)
  - 33 RESET ROADSIDE SIGN PER THE CA MUTCD 2014, FIGURE 2A-2(CA)
  - 34 RELOCATE ROADSIDE SIGN PER THE CA MUTCD 2014, FIGURE 2A-2(CA) AS SHOWN ON PLAN



**CURVE TABLE**

NO.	RADIUS	DELTA	LENGTH	TANGENT
C1	7.00'	089°59'53"	11.00'	7.00'

NOTE: SEE SHEET 4, CONSTRUCTION NOTE 37 "POTHOLE TO VERIFY UTILITY LOCATION AND DEPTH"



**FIELD CHANGES**

MARK	CHANGES	RESIDENT ENGINEER	DATE
	NO CHANGES		



SAN BERNARDINO COUNTY  
 DEPARTMENT OF PUBLIC WORKS

DESIGNED BY: JMH	DRAWN BY: JMH	CHECKED BY: ER/NM	RECOMMENDED BY: CHRIS NGUYEN, P.E. ENGINEERING MANAGER
APPROVED BY: NOEL MONDRAGON, P.E. SUPERVISING ENGINEER			APPROVED BY: MERVAT N. MIKHAIL, P.E. DEPUTY DIRECTOR

**PARK DRIVE AND OTHER ROADS  
 RAMP 3, 4 & 5 PLAN AND PROFILE**

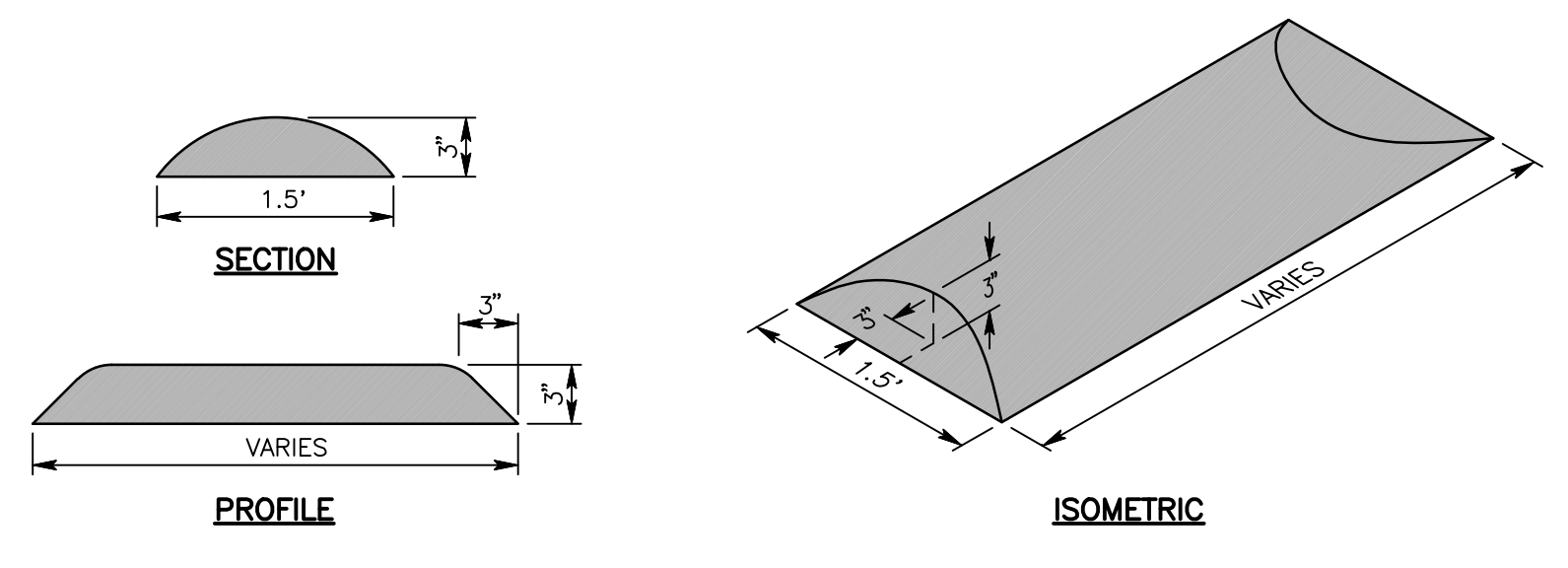
WRIGHTWOOD AREA

J.L. REF. 12022	W.O. NO. H15113	PLAN SCALE 1" = 10'	SHT. NO. 5	TOT. SHTS. 8
-----------------	-----------------	---------------------	------------	--------------

FILE NO. 640600-010 124150-020 336700-030

MARK	REVISIONS	DATE
MARK	REVISIONS	DATE

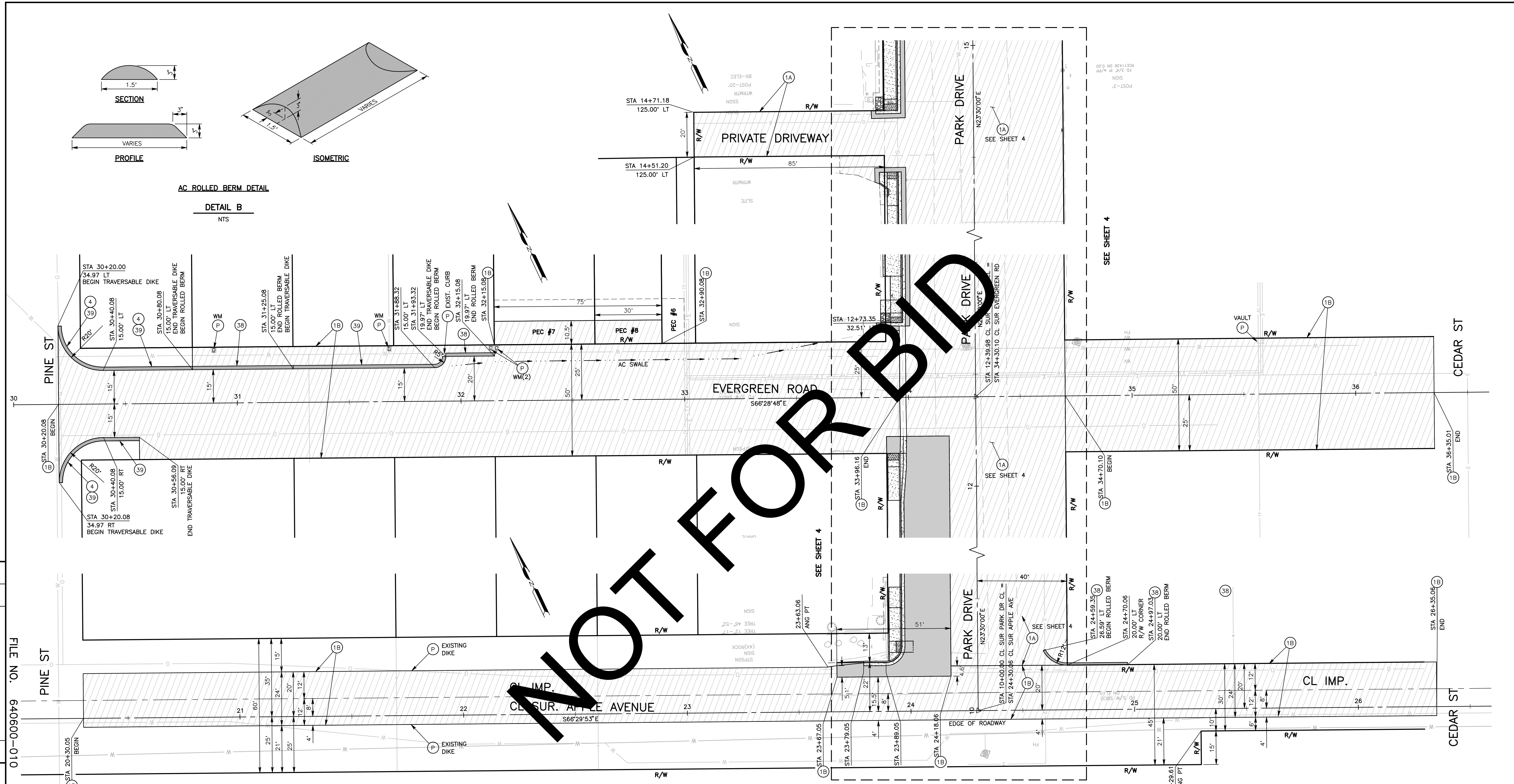




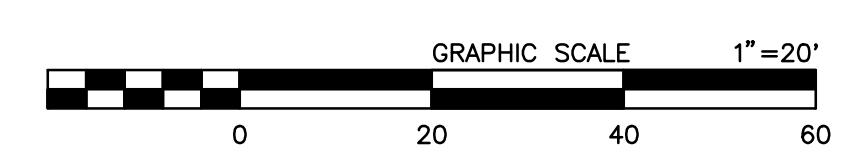
AC ROLLED BERM DETAIL

DETAIL B  
NTS

NOT FOR BID



- CONSTRUCTION NOTES:
- P PROTECT IN PLACE
  - 1A COLD PLANE (0.15' THK) EXISTING ASPHALT CONCRETE PAVEMENT AND PLACE (0.15' THK) ASPHALT CONCRETE OVERLAY PER STRUCTURAL SECTION DETAIL SHEET 3
  - 1B COLD PLANE (0.24' THK) EXISTING ASPHALT CONCRETE PAVEMENT AND PLACE (0.24' THK) ASPHALT CONCRETE OVERLAY PER STRUCTURAL SECTION DETAIL SHEET 3
  - 4 SAWCUT AND REMOVE EXISTING ASPHALT CONCRETE DIKE
  - 38 CONSTRUCT ASPHALT CONCRETE ROLLED BERM, SEE DETAIL B SHEET 7
  - 39 CONSTRUCT ASPHALT CONCRETE TRAVERSABLE DIKE PER COUNTY STD 117a



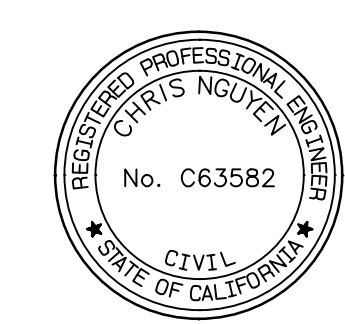
MARK	REVISIONS	DATE

MARK	REVISIONS	DATE

FILE NO. 640600-010 124150-020 336700-030

MARK	CHANGES	RESIDENT ENGINEER	DATE

FIELD CHANGES

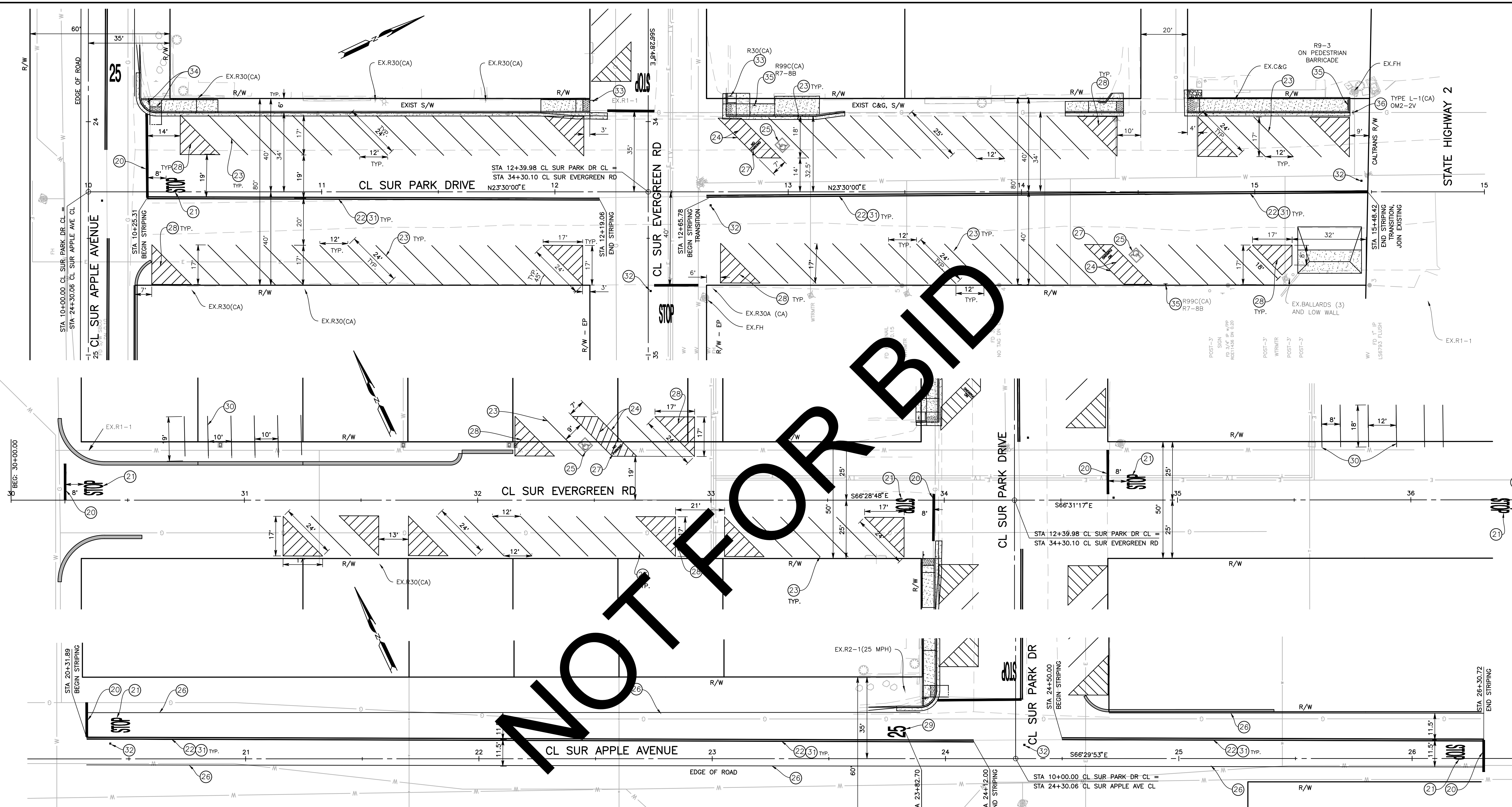


SAN BERNARDINO COUNTY DEPARTMENT OF PUBLIC WORKS			
DESIGNED BY: JMH	DRAWN BY: JMH	CHECKED BY: ER/NM	RECOMMENDED BY: CHRIS NGUYEN, P.E. ENGINEERING MANAGER
APPROVED BY: NOEL MONDRAGON, P.E. SUPERVISING ENGINEER		APPROVED BY: MERVAT N. MIKHAIL, P.E. DEPUTY DIRECTOR	

PARK DRIVE AND OTHER ROADS MILL AND OVERLAY PLAN EVERGREEN ROAD AND APPLE AVENUE WRIGHTWOOD AREA				
J.L. REF. 12022	W.O. NO. H15113	PLAN SCALE 1"=20'	SHT. NO. 7	TOT. SHT'S. 8

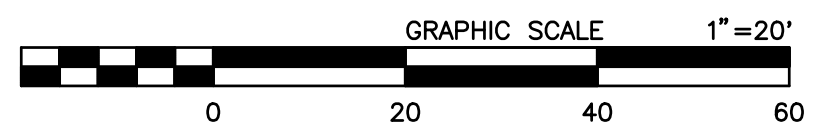


NOT FOR BID



NOTE: ALL PAVEMENT MARKERS SHALL BE RECESSED PER THE CALTRANS 2018 STANDARD PLAN A20D

- CONSTRUCTION NOTES:**
- 20 PAINT 12-INCH WIDE, SOLID WHITE LIMIT LINE PER CALTRANS 2018 STANDARD PLAN A24E
  - 21 PAINT "STOP" PAVEMENT MARKING PER CALTRANS 2018 STANDARD PLAN A24D AS SHOWN ON PLAN
  - 22 PAINT DOUBLE 6-INCH WIDE, CENTER YELLOW STRIPE PER CALTRANS 2018 STANDARD PLAN A20A, DETAIL 22
  - 23 PAINT 4-INCH WIDE SOLID WHITE PARKING STRIPE AT 45 DEGREES AS SHOWN ON PLAN
  - 24 PAINT 4-INCH WIDE SOLID BLUE ADA PARKING STRIPE PER CALTRANS 2018 STANDARD PLAN A90A
  - 25 PAINT INTERNATIONAL SYMBOL OF ACCESSIBILITY (ISA) MARKING PER 2018 CALTRANS STANDARD PLAN A24C
  - 26 PAINT 6-INCH WIDE, EDGE LINE STRIPE PER CALTRANS 2018 STANDARD PLAN A20B, DETAIL 27B
  - 27 PAINT "NO PARKING" PAVEMENT MARKING PER CALTRANS 2018 STANDARD PLAN A24E AS SHOWN ON PLAN
  - 28 PAINT 4-INCH WIDE SOLID HATCH PARKING STRIPES AT 3FT SPACING AS SHOWN ON PLAN.
  - 29 PAINT SPEED LIMIT PAVEMENT MARKING PER CAL TRANS 2018 STANDARD PLAN A24C.
  - 30 PROTECT EXISTING STRIPING IN PLACE, REPAINT IF DAMAGED
  - 31 INSTALL RECESSED PAVEMENT MARKER PER CALTRANS 2018 STANDARD PLAN A20A, DETAIL 22
  - 32 INSTALL RECESSED PAVEMENT MARKER (RETROREFLECTIVE - BLUE) FOR EXISTING FIRE HYDRANTS PER PLAN, PER THE CALIFORNIA MUTCD DATED 2014, FIGURE 3B-102(CA)
  - 33 RESET ROADSIDE SIGN PER THE CA MUTCD 2014, FIGURE 2A-2(CA)
  - 34 RELOCATE ROADSIDE SIGN PER THE CA MUTCD 2014, FIGURE 2A-2(CA) AS SHOWN ON PLAN
  - 35 INSTALL ROADSIDE SIGN PER THE CA MUTCD 2014, FIGURE 2A-2(CA) AS SHOWN ON PLAN
  - 36 INSTALL TYPE L-1(CA) 0M2-2V OBJECT MARKER PER THE CA MUTCD 2014, FIGURE 2A-2(CA) AS SHOWN ON PLAN



MARK	CHANGES	RESIDENT ENGINEER	DATE
	NO CHANGES		

**FIELD CHANGES**



SAN BERNARDINO COUNTY DEPARTMENT OF PUBLIC WORKS			
DESIGNED BY:	DRAWN BY:	CHECKED BY:	RECOMMENDED BY:
JMH/JHC	JMH/SL	JHC/LL	JEREMY JOHNSON, P.E. TRAFFIC DIVISION ENGINEERING MANAGER
APPROVED BY:			
LEI LI, P.E. SUPERVISING MANAGER	DATE	GRANT MANN, M.S., P.E. DEPUTY DIRECTOR	DATE

PARK DRIVE AND OTHER ROADS SIGNING AND STRIPING PLAN WRIGHTWOOD AREA				
J.L. REF.	W.O. NO.	PLAN SCALE	SHT. NO.	TOT. SHT'S.
12022	H15113	1"=20'	8	8

MARK	REVISIONS	DATE

FILE NO. 640600-010 124150-020 336700-030