

WARNING: ALL INDIVIDUALS INTERESTED IN BIDDING ON THIS PROJECT MUST OBTAIN THE FINAL PLANS AND SPECIFICATIONS FROM THE DEPARTMENT MANAGING THE PROJECT OR AS OTHERWISE STATED IN THE ADVERTISEMENT FOR BIDS FOR THE PROJECT. DO NOT USE THE PLANS AND SPECIFICATIONS POSTED ON THE CLERK OF THE BOARD'S WEBSITE FOR BIDDING ON THIS PROJECT.

SAN BERNARDINO COUNTY DEPARTMENT OF PUBLIC WORKS



TRANSPORTATION PLANS FOR CONSTRUCTION ON **RIVERSIDE DRIVE**

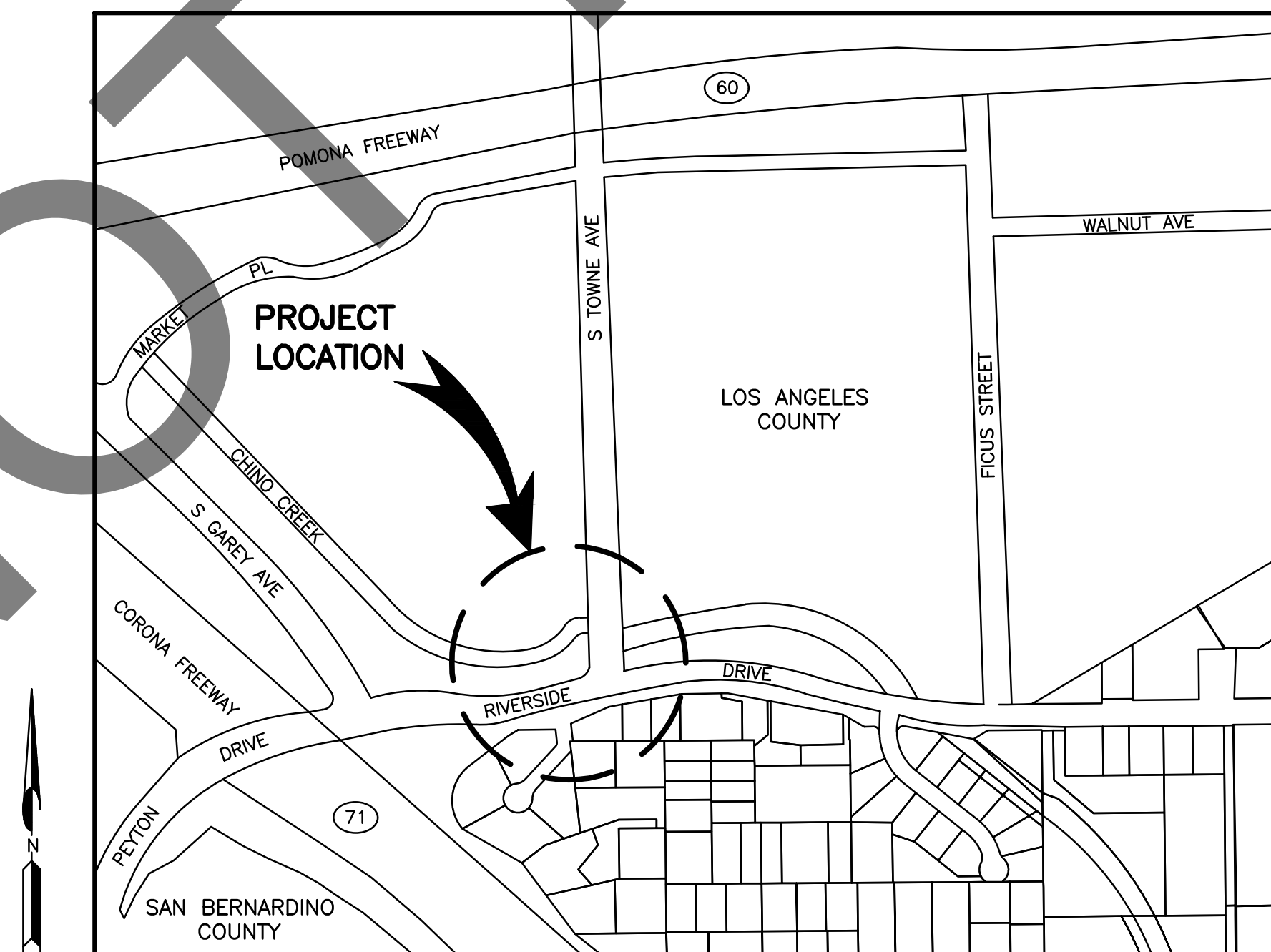
LIMITS

SR-71 EAST TO TOWNE AVENUE

WORK ORDER NO. H15237

ROAD NO. 701050-010

LENGTH = 0.04 MILES



LOCATION MAP

NOT TO SCALE

SAN BERNARDINO COUNTY

APPROVED BY:

Noel Castillo
NOEL CASTILLO, P.E., DIRECTOR OF PUBLIC WORKS R.C.E. 78044

8/23/24

DATE

Permit No. 08-24-N-MC-0570
08-SBd-71-PM 0.27

MARK	CHANGES	RESIDENT ENGINEER	DATE
	NO CHANGES		
FIELD CHANGES			
	SHT. NO.	TOT. SHT'S.	
	1	7	

MARK	REVISIONS	APPR.	DATE

INDEX OF SHEETS

- 1 TITLE SHEET
- 2 PROJECT NOTES, LEGENDS, INDEX MAP, INDEX OF SHEETS
- 3 TYPICAL SECTIONS AND MISCELLANEOUS DETAILS
- 4 PLAN AND PROFILE ROAD
- 5 SIGNING AND STRIPING PLAN
- 6 EROSION CONTROL PLAN
- 7 X-SECTIONS

THE FOLLOWING SPECIAL DRAWINGS AND COUNTY STANDARDS ARE ATTACHED TO THE SPECIAL PROVISIONS:

109 303 303A
TRAFFIC CONTROL PLANS

TO BE SUPPLEMENTED BY THE FOLLOWING CALTRANS STANDARD PLANS DATED 2023:

A20A	RSP A20B	A20C	A20D
A24A	A24C	A24E	A24G
ES-5A	ES-5B	ES-13A	A62A
A87A	RS1	RS2	RS4
T9	T10	T13	H51

TO BE SUPPLEMENTED BY THE FOLLOWING CA MUTCD 2014 REVISION 4.

FIG 2A-2(CA) FIG 2C-13(CA)
FIG 6H-28 FIG 6H-29
SEC. 6D.02 SEC. 6D.01

THIS PROJECT REQUIRES A CONTRACTOR'S LICENSE CLASS "A", C8 OR C12

GENERAL NOTES

U. THE FACT THAT ANY UTILITY FACILITY IS SHOWN OR NOT SHOWN UPON THE PLANS SHALL NOT RELIEVE THE CONTRACTOR OF THE RESPONSIBILITY UNDER SECTION 5-1.36 C "NON-HIGHWAY FACILITIES" OF THE CALTRANS STANDARD SPECIFICATIONS. IT SHALL BE THE CONTRACTOR'S RESPONSIBILITY, PURSUANT THERETO, TO ASCERTAIN THE LOCATION OF ANY UTILITY FACILITY WHICH MAY BE SUBJECT TO DAMAGE BY REASON OF THE CONTRACTOR'S OPERATIONS.

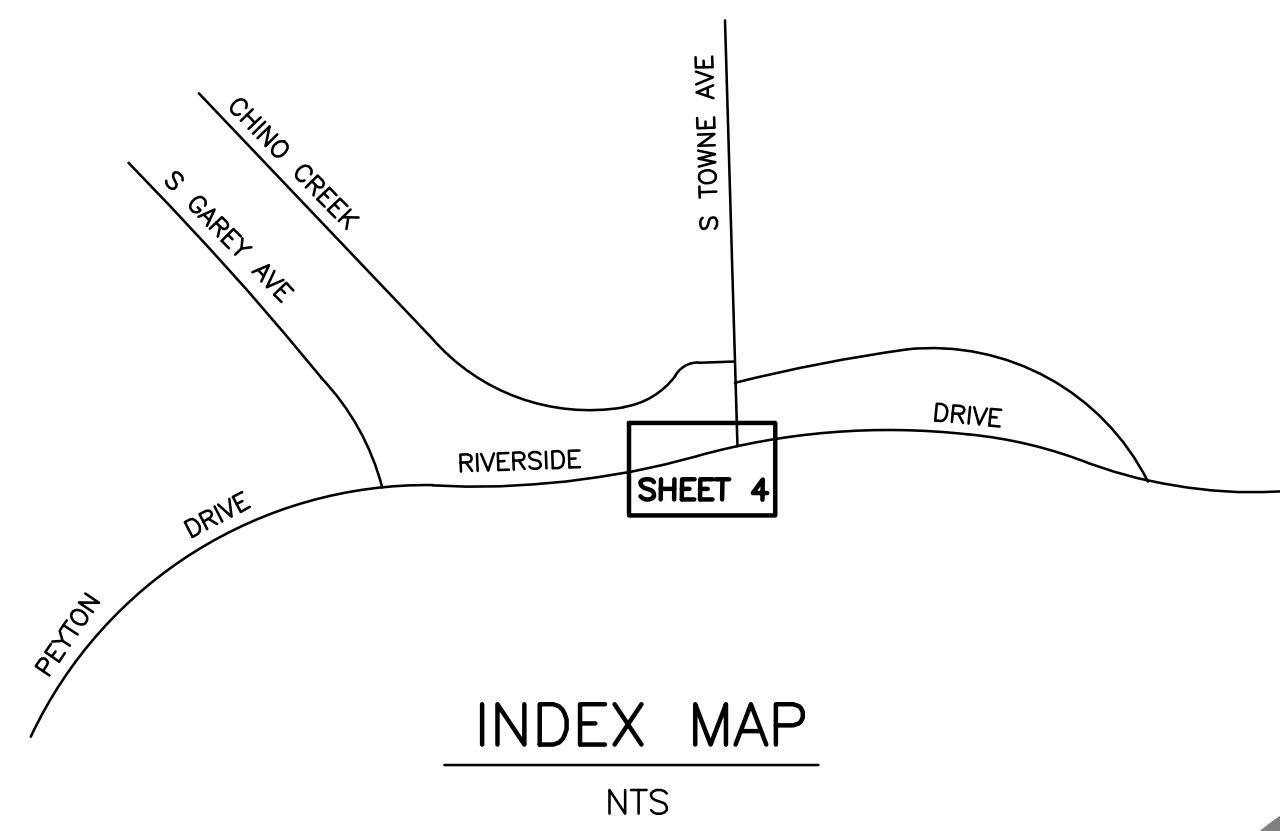
1. ALL STATIONING NOTES ON PLAN REFER TO THE CL IMP RIVERSIDE DRIVE OR SIDE STREET.
2. DIMENSIONS ARE SUBJECT TO TOLERANCES SPECIFIED IN THE CALTRANS STANDARD SPECIFICATIONS.
3. ALL PAVEMENT WIDTH DIMENSIONS SHOWN ON THE PLANS ARE TO THE EDGE OF PAVEMENT OR TO THE TOP OF CURB, UNLESS OTHERWISE NOTED.
4. TRANSITIONS AND WARPING SHALL BE AS SHOWN AND AS DETERMINED BY THE ENGINEER.
5. ASPHALT CONCRETE OVERLAYS SHALL BE FEATHERED TO MEET EXISTING AS SHOWN ON THE PLANS OR AS DETERMINED BY THE ENGINEER.
6. ALL TREES & VEGETATION OUTSIDE THE LIMITS OF EXCAVATION AND EMBANKMENT SLOPE LINES, SHALL BE PROTECTED IN PLACE.

BASIS OF BEARINGS:

CCS83 ZONE 5, NAD83 (2011), EPOCH 2010.0

BENCH MARK:

ELEVATION DETERMINED FROM CORS CONTROL SITES.
POINT #1 (RTK BASE)-FD SBCo S&W (RP) (JL# 11562)
NAVD-88 ELEVATION=727.643'



ABBREVIATIONS LEGEND:

- AC = ASPHALT CONCRETE
- AP = ANGLE POINT
- AVE = AVENUE
- BEG = BEGINNING
- BCR = BEGIN CURB RETURN
- BDR = BEGIN DIKE RETURN
- BPR = BEGIN PAVEMENT RETURN
- CL = CENTER LINE
- CLF = CHAIN LINK FENCE
- DR = DRIVE
- DWG = DRAWING
- ECR = END OF CURB RETURN
- EDR = END OF DIKE RETURN
- EL = ELEVATION
- EP = EDGE OF PAVEMENT
- EPR = END OF PAVEMENT RETURN
- EXIST = EXISTING
- FCD = FLOOD CONTROL DISTRICT
- FG = FINISHED GRADE
- FL = FLOW LINE
- LT = LEFT
- MAX = MAXIMUM
- MIN = MINIMUM
- NTS = NOT TO SCALE
- PEC = PERMIT TO ENTER AND CONSTRUCT
- PI = POINT OF INTERSECTION
- PL = PROPERTY LINE
- RT = RIGHT
- R/W = RIGHT OF WAY
- SBC = SAN BERNARDINO COUNTY
- SHT = SHEET
- ST = STREET
- STA = STATION
- STD = STANDARD
- SUR = SURVEY
- THK = THICKNESS
- TF = TOP OF FOOTING
- TW = TOP OF WALL
- VC = VERTICAL CURVE

CONSTRUCTION MATERIALS

- PLAN**
- [Pattern] ASPHALT CONCRETE OVERLAY
 - [Pattern] ASPHALT CONCRETE PAVEMENT
 - [Pattern] PORTLAND CEMENT CONCRETE
- SECTION**
- [Pattern] ASPHALT CONCRETE OVERLAY
 - [Pattern] ASPHALT CONCRETE PAVEMENT
 - [Pattern] NATURAL GROUND
 - [Pattern] PORTLAND CEMENT CONCRETE SECTION
 - [Pattern] AGGREGATE BASE

UNDERGROUND UTILITY LEGEND

- GAS LINE G
- SEWER MAIN LINE S
- WATER LINE W
- ELECTRIC LINE E
- TELEPHONE LINE T
- DATA/CABLE LINE TF

- [Symbol] PROPOSED SLOPE
- [Symbol] EXISTING SLOPE

CALTRANS PAVING NOTES:

1. Hot Mix Asphalt (HMA) shall be Type A, with 3/4-inch aggregate gradation and PG 64-10 asphalt binder and be constructed according to Caltrans Standard Specifications Section 39 and Standard Special Provision 39-2.02.
2. Prime Coat shall be applied to the base prior to placing the Hot Mix Asphalt. Prime Coat shall conform to the latest provisions in Standard Specifications Section 93 and the Caltrans Standard Special Provision 39-2.01C (3) (c).
3. Tack coat shall be applied to existing pavement including planed surfaces, between layers of HMA and vertical surfaces of curbs, gutters, and construction joints. Tack coat must comply with the specifications for asphaltic emulsion in Standard Specifications Section 94, "Asphaltic Emulsion," or asphalt binder in Section 92, "Asphalts."
4. Relative compaction of 95 percent shall be obtained for a minimum "depth of 2.5 feet below the finished grade, for the width of the traveled way plus 3 feet on each side" according to Standard Specifications Section 19-5.03B, "Earthwork".
5. Aggregate Base (AB) shall be Class 2 and constructed according to Standard Specifications Section 26, "Aggregate bases".

CONSTRUCTION NOTES:

- 1 UTILITIES TO BE RESET BY OTHERS (SEE NOTE U OF GENERAL NOTES ON SHEET 2).
- 2 COLD PLANE 2' MIN. (0.20' THK) EXISTING ASPHALT CONCRETE PAVEMENT AND PLACE (0.20' THK) HMA TYPE A, ASPHALT CONCRETE OVERLAY.
- 3 SAWCUT AND REMOVE EXISTING ASPHALT CONCRETE SURFACING.
- 4 SAWCUT AND REMOVE EXISTING CONCRETE SURFACING, RAMP, SIDEWALK, CROSS GUTTER AND SPANDREL.
- 5 SAWCUT AND REMOVE EXISTING CURB OR CURB AND GUTTER.
- 6 PLACE (0.33' THICK) 4'-6" MIN. WIDE CONCRETE SIDEWALK PER COUNTY STD 109 TYPE C.
- 7 PLACE (0.75' THK) ASPHALT PAVEMENT (HMA TYPE A 3/4", PG 64-10) OVER (1.50' THK) CLASS 2 AGGREGATE BASE.
- 8 PROTECT IN PLACE.
- 9 CONSTRUCT 6" CURB AND GUTTER PER 2023 CALTRANS STD. A87A, TYPE B2-6.
- 10 CONSTRUCTION TYPE 1 EROSION CONTROL FIBER ROLL AND COMPOST SOCK PER CALTRANS STANDARD H51. FIBER ROLLS MUST BE REMANUFACTURED ROLL FILLED WITH RICE OR WHEAT STRAW, WOOD EXCELSIOR, COTTON OR COCONUT FIBER. FIBER ROLL MUST BE COVERED WITH BIODEGRADABLE JUTE, SISAL, WOOD FIBER, COTTON OR COIR FIBER NETTING SECURED TIGHTLY AT EACH END AND SHALL BE 8 TO 10 INCHES IN DIAMETER AND AT LEAST 1.1 LB/FT. FIBER ROLL MUST HAVE A MINIMUM FUNCTIONAL LONGEVITY OF 1 YEAR. CONTRACTOR TO REVIEW 2023 SPECIAL PROVISION, SECTION 21-2 EROSION CONTROL WORK FOR ADDITIONAL INFORMATION.
- 11 PLACE (0.33' THICK) 6" WIDE CONCRETE SIDEWALK PER COUNTY STD 109 TYPE C.
- 12 REMOVE AND OR RELOCATE PER TRAFFIC IMPROVEMENT PLANS.
- 13 REMOVE AND DISPOSE OF TREE AND STUMP.
- 14 TRANSITION FROM 8" CURB AND GUTTER TO 6" CURB AND GUTTER.

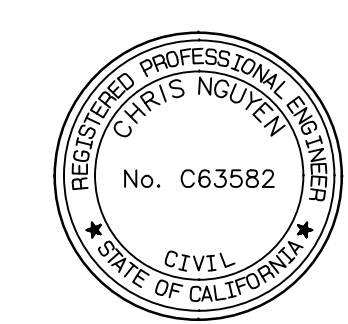
CLIMATE REGION
INLAND VALLEY

Permit No. 08-24-N-MC-0570
08-SBd-71-PM 0.27

NOT FOR BID

MARK	CHANGES	NO CHANGES	RESIDENT ENGINEER	DATE

FIELD CHANGES



SAN BERNARDINO COUNTY
DEPARTMENT OF PUBLIC WORKS

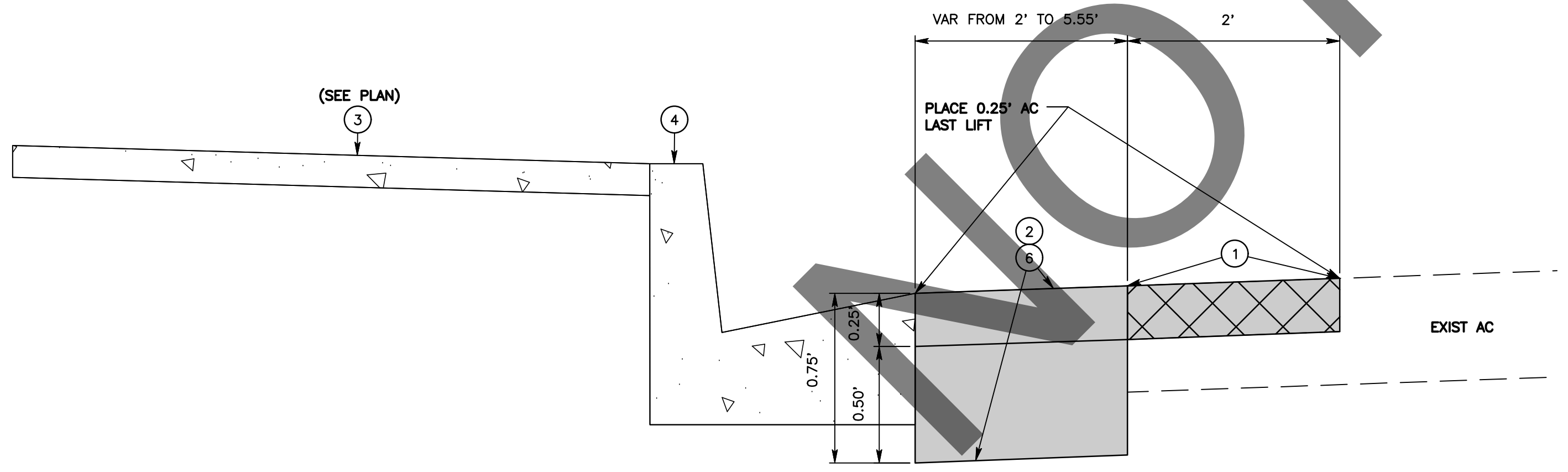
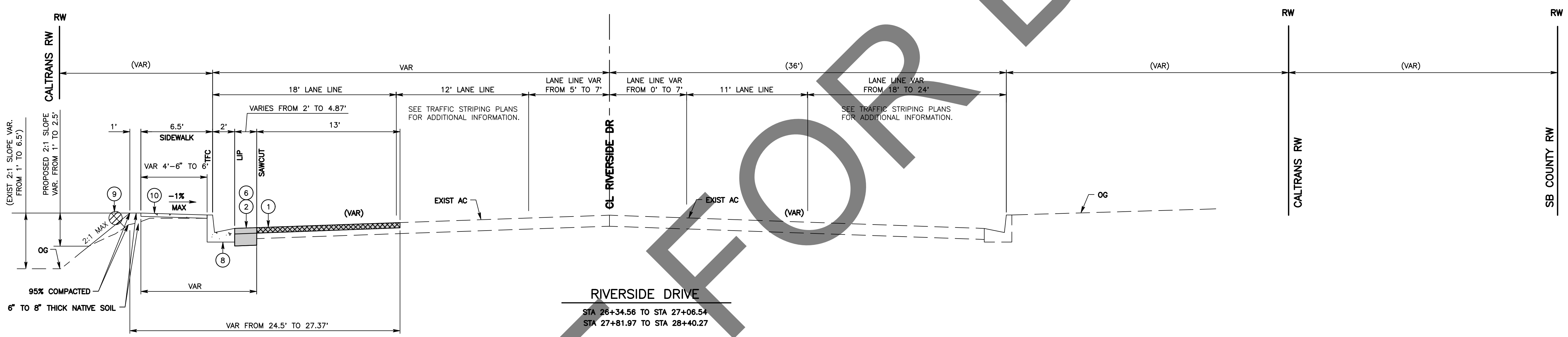
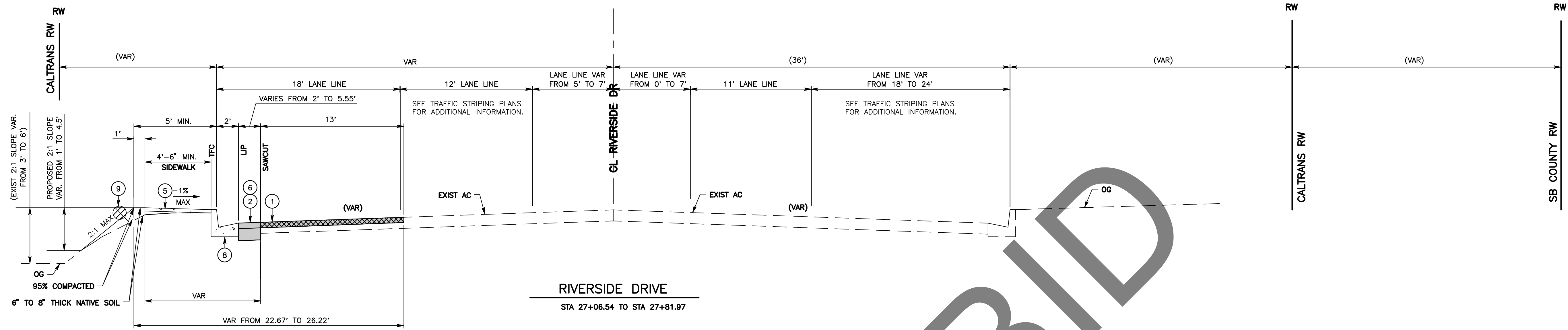
DESIGNED BY: DJ	DRAWN BY: DJ/MDV	CHECKED BY: WL	RECOMMENDED BY: CHRIS NGUYEN, P.E. ENGINEERING MANAGER 8/22/2024 DATE
APPROVED BY: LEI LI, P.E. SUPERVISING ENGINEER 8/21/2024 DATE		APPROVED BY: MERVAT N. MIKHAIL, P.E. DEPUTY DIRECTOR 8/22/24 DATE	

RIVERSIDE DRIVE				
PROJECT NOTES, INDEX MAP, AND LEGENDS				
CHINO AREA				
J.L. REF. J.L. 12184	W.O. NO. H15237	PLAN SCALE AS SHOWN	SHT. NO. 2	TOT. SHT'S. 7

FILE NO. 701050-010

FILE NO. 701050-010

MARK	REVISIONS	DATE	APPR.

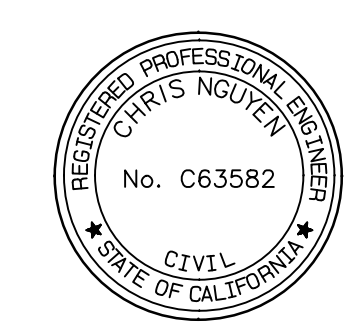


DETAILS
NTS

- CONSTRUCTION NOTES:**
- COLD PLANE 2' MIN. (0.20' THK) EXISTING ASPHALT CONCRETE PAVEMENT AND PLACE (0.20' THK) HMA TYPE A, ASPHALT CONCRETE OVERLAY.
 - SAWCUT AND REMOVE EXISTING ASPHALT CONCRETE SURFACING.
 - SAWCUT AND REMOVE EXISTING CONCRETE SURFACING, RAMP, SIDEWALK, CROSS GUTTER AND SPANDREL.
 - SAWCUT AND REMOVE EXISTING CURB OR CURB AND GUTTER.
 - PLACE (0.33' THICK) 4'-6" MIN. WIDE CONCRETE SIDEWALK PER COUNTY STD 109 TYPE C.
 - PLACE (0.75' THK) ASPHALT PAVEMENT (HMA TYPE A 3/4", PG 64-10) OVER (1.50' THK) CLASS 2 AGGREGATE BASE.
 - CONSTRUCT 6" CURB AND GUTTER PER 2023 CALTRANS STD. A87A, TYPE B2-6.
 - CONSTRUCTION TYPE 1 EROSION CONTROL FIBER ROLL AND COMPOST SOCK PER CALTRANS STANDARD H51. FIBER ROLLS MUST BE REMANUFACTURED ROLL FILLED WITH RICE OR WHEAT STRAW, WOOD EXCELSIOR, COTTON OR COCONUT FIBER. FIBER ROLL MUST BE COVERED WITH BIODEGRADABLE JUTE, SISAL, WOOD FIBER, COTTON OR COIR FIBER NETTING SECURED TIGHTLY AT EACH END AND SHALL BE 8 TO 10 INCHES IN DIAMETER AND AT LEAST 1.1 LB/FT. FIBER ROLL MUST HAVE A MINIMUM FUNCTIONAL LONGEVITY OF 1 YEAR. CONTRACTOR TO REVIEW 2023 SPECIAL PROVISION, SECTION 21-2 EROSION CONTROL WORK FOR ADDITIONAL INFORMATION.
 - PLACE (0.33' THICK) 6' WIDE CONCRETE SIDEWALK PER COUNTY STD 109 TYPE C.

Permit No. 08-24-N-MC-0570
08-SBd-71-PM 0.27

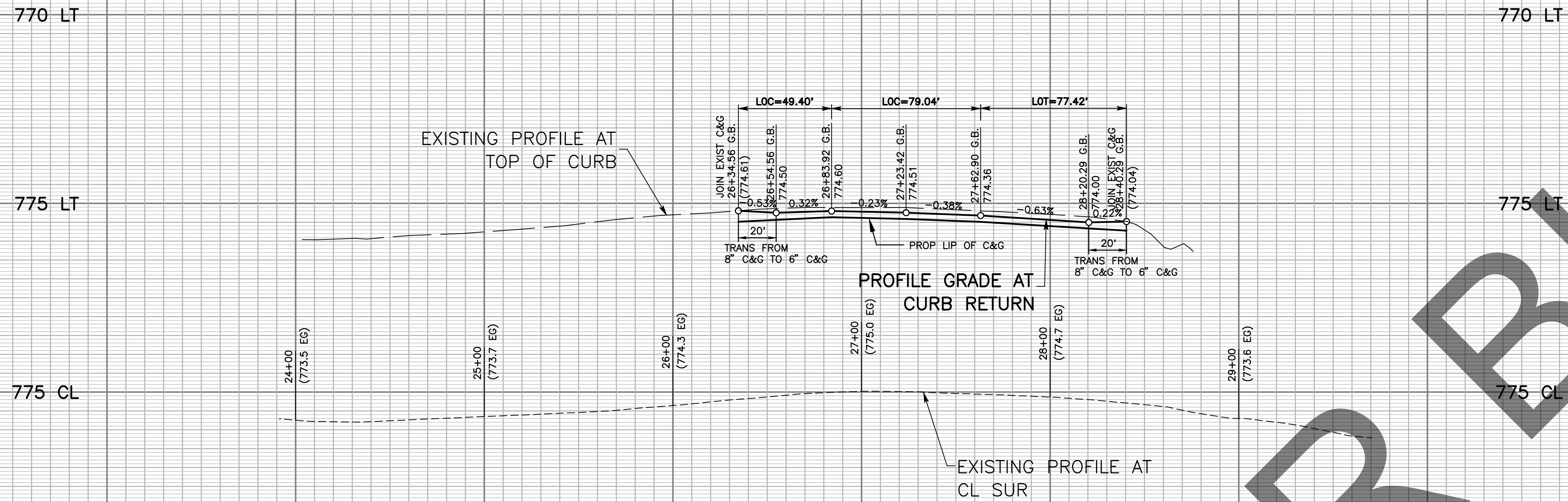
MARK	CHANGES	RESIDENT ENGINEER	DATE
	NO CHANGES		
FIELD CHANGES			



SAN BERNARDINO COUNTY DEPARTMENT OF PUBLIC WORKS			
DESIGNED BY: DJ	DRAWN BY: DJ/MDV	CHECKED BY: WL	RECOMMENDED BY: CHRIS NGUYEN, P.E. ENGINEERING MANAGER 8/22/2024
APPROVED BY: LEI LI, P.E. SUPERVISING ENGINEER 8/22/24		APPROVED BY: MERVAT N. MIKHAIL, P.E. DEPUTY DIRECTOR 8/22/24	

RIVERSIDE DRIVE TYPICAL SECTIONS AND MISC. DETAILS CHINO AREA				
J.L. REF. J.L. 12184	W.O. NO. H15237	PLAN SCALE 1"=10'	SHT. NO. 3	TOT. SHT'S. 7

MARK	REVISIONS	DATE

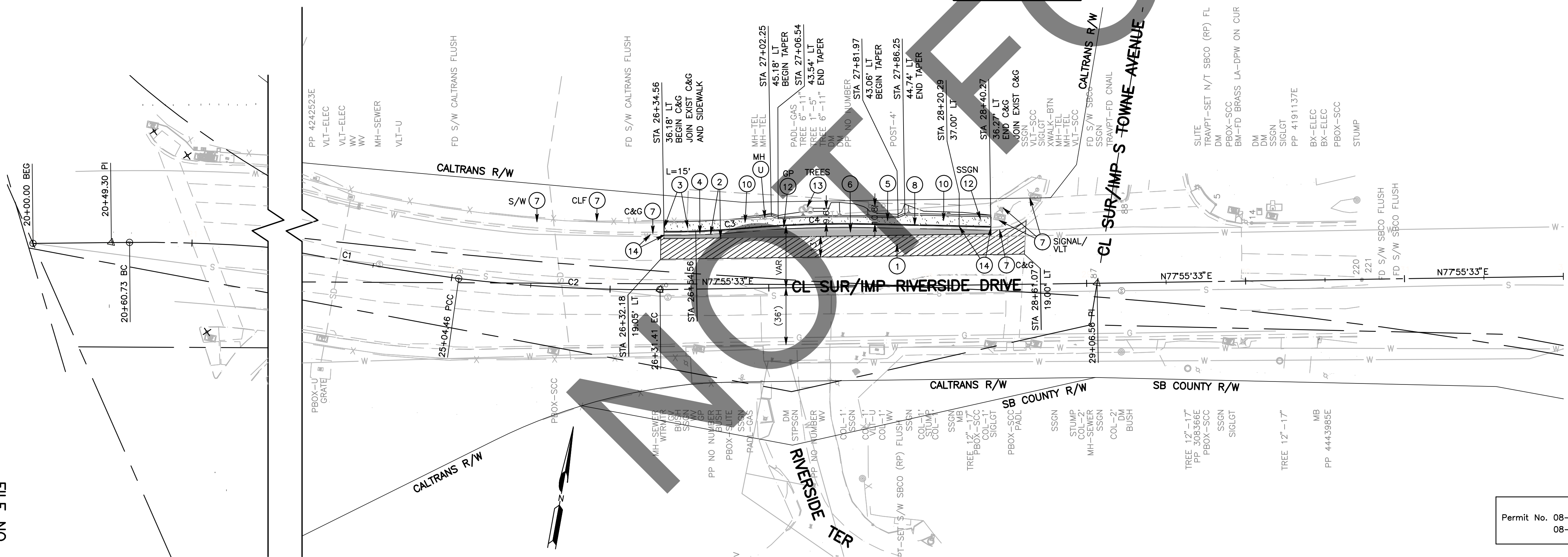


PROFILE
SCALE: HORIZ 1"=40'
VERT 1"=4'

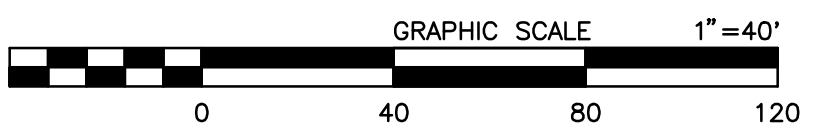
- CONSTRUCTION NOTES:**
- UTILITIES TO BE RESET BY OTHERS (SEE NOTE U OF GENERAL NOTES ON SHEET 2).
 - COLD PLANE 2" MIN. (0.20" THK) EXISTING ASPHALT CONCRETE PAVEMENT AND PLACE (0.20" THK) HMA TYPE A, ASPHALT CONCRETE OVERLAY.
 - SAWCUT AND REMOVE EXISTING ASPHALT CONCRETE SURFACING, RAMP, SIDEWALK, CROSS GUTTER AND SPANDREL.
 - SAWCUT AND REMOVE EXISTING CONCRETE SURFACING, RAMP, SIDEWALK, CROSS GUTTER AND SPANDREL.
 - SAWCUT AND REMOVE EXISTING CURB OR CURB AND GUTTER.
 - PLACE (0.33' THICK) 4'-6" MIN. WIDE CONCRETE SIDEWALK PER COUNTY STD 109 TYPE C.
 - PLACE (0.75' THK) ASPHALT PAVEMENT (HMA TYPE A 3/4", PG 64-10) OVER (1.50' THK) CLASS 2 AGGREGATE BASE.
 - PROTECT IN PLACE.
 - CONSTRUCT 6" CURB AND GUTTER PER 2023 CALTRANS STD. A87A, TYPE B2-6.
 - PLACE (0.33' THICK) 6" WIDE CONCRETE SIDEWALK PER COUNTY STD 109 TYPE C.
 - REMOVE AND OR RELOCATE PER TRAFFIC IMPROVEMENT PLANS.
 - REMOVE AND DISPOSE OF TREE AND STUMP.
 - TRANSITION FROM 8" CURB AND GUTTER TO 6" CURB AND GUTTER.

NO.	R	Δ	L	T
C1	2500.00'	2'38"16"	115.09'	57.55'
C2	1000.00'	7'16"25"	126.95'	63.56'

NO.	R	D	L	T
C3	500.00'	005'39"38"	49.40'	24.72'
C4	700.00'	006'28"10"	79.04'	39.56'



Permit No. 08-24-N-MC-0570
08-SBd-71-PM 0.27



MARK	CHANGES	RESIDENT ENGINEER	DATE
	NO CHANGES		

FIELD CHANGES



SAN BERNARDINO COUNTY
DEPARTMENT OF PUBLIC WORKS

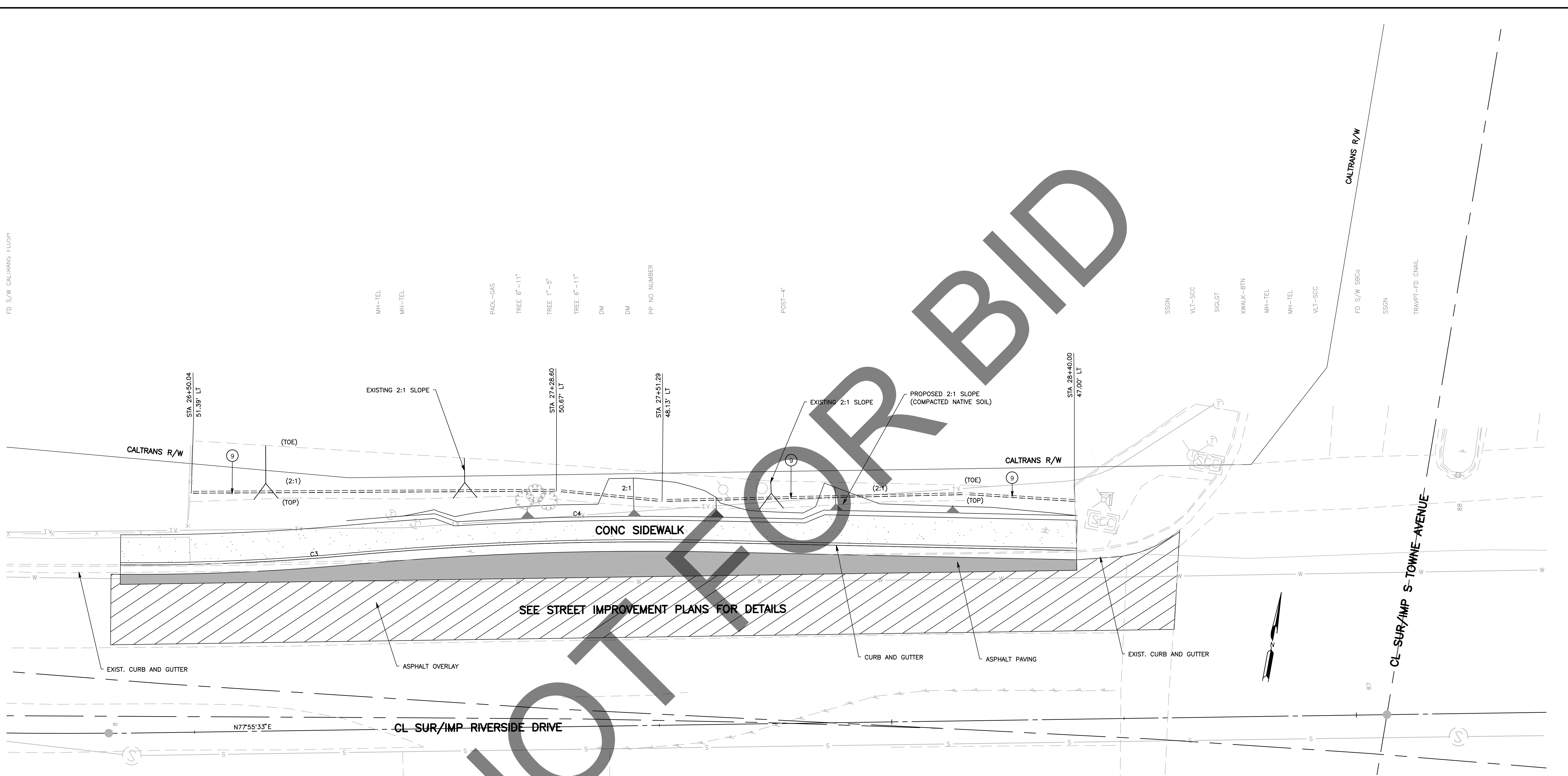
DESIGNED BY: DJ	DRAWN BY: DJ/MDV	CHECKED BY: WL	RECOMMENDED BY: CHRIS NGUYEN, P.E. ENGINEERING MANAGER 8/22/2024 DATE
APPROVED BY: LEI LI, P.E. SUPERVISING ENGINEER 8/21/2024 DATE			APPROVED BY: MERVAT N. MIKHAIL, P.E. DEPUTY DIRECTOR 8/22/24 DATE

RIVERSIDE DRIVE
PLAN AND PROFILE
CHINO AREA
INTERSECTION

J.L. REF. J.L. 12184	W.O. NO. H15237	PLAN SCALE 1"=40'	SHT. NO. 4	TOT. SHT'S. 7
-------------------------	--------------------	----------------------	---------------	------------------

MARK	REVISIONS	DATE	APPR.

FD S/W CALTRANS FLIGHT



NOT FOR BID

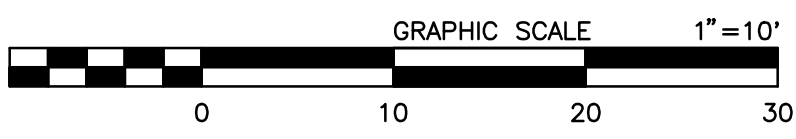
- CONSTRUCTION NOTES:**
- 9 CONSTRUCTION TYPE 1 EROSION CONTROL FIBER ROLL AND COMPOST SOCK PER CALTRANS STANDARD H51. FIBER ROLLS MUST BE REMANUFACTURED ROLL FILLED WITH RICE OR WHEAT STRAW, WOOD EXCELSIOR, COTTON OR COCONUT FIBER. FIBER ROLL MUST BE COVERED WITH BIODEGRADABLE JUTE, SISAL, WOOD FIBER, COTTON OR COIR FIBER NETTING SECURED TIGHTLY AT EACH END AND SHALL BE 8 TO 10 INCHES IN DIAMETER AND AT LEAST 1.1 LB/FT. FIBER ROLL MUST HAVE A MINIMUM FUNCTIONAL LONGEVITY OF 1 YEAR. CONTRACTOR TO REVIEW 2023 SPECIAL PROVISION, SECTION 21-2 EROSION CONTROL WORK FOR ADDITIONAL INFORMATION.

Permit No. 08-24-N-MC-0570
08-SB4-71-PM 0.27

MARK	REVISIONS	DATE

MARK	REVISIONS	DATE

FILE NO. 701050-010



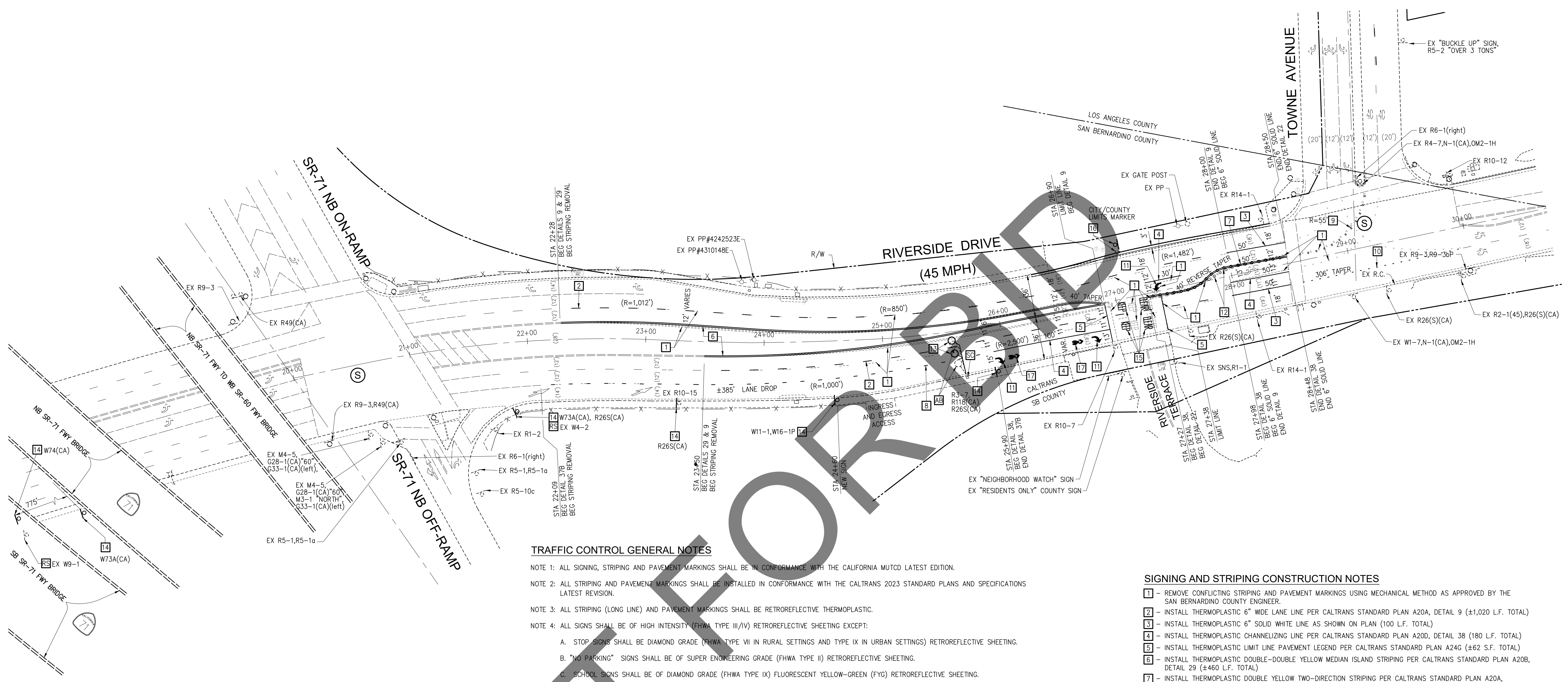
MARK	CHANGES	RESIDENT ENGINEER	DATE
	NO CHANGES		

FIELD CHANGES



SAN BERNARDINO COUNTY DEPARTMENT OF PUBLIC WORKS			
DESIGNED BY: DJ	DRAWN BY: DJ/MDV	CHECKED BY: WJL	RECOMMENDED BY: CHRIS NGUYEN, P.E. ENGINEERING MANAGER 8/22/2024
APPROVED BY: LEJ LI, P.E. SUPERVISING ENGINEER 8/21/2024		APPROVED BY: MERVAT N. MIKHAIL, P.E. DEPUTY DIRECTOR 8/22/24	

RIVERSIDE DRIVE EROSION CONTROL PLAN CHINO AREA INTERSECTION				
J.L. REF. J.L. 12184	W.O. NO. H15237	PLAN SCALE 1"=10'	SHT. NO. 6	TOT. SHT'S. 7



TRAFFIC CONTROL GENERAL NOTES

- NOTE 1: ALL SIGNING, STRIPING AND PAVEMENT MARKINGS SHALL BE IN CONFORMANCE WITH THE CALIFORNIA MUTCD LATEST EDITION.
- NOTE 2: ALL STRIPING AND PAVEMENT MARKINGS SHALL BE INSTALLED IN CONFORMANCE WITH THE CALTRANS 2023 STANDARD PLANS AND SPECIFICATIONS LATEST REVISION.
- NOTE 3: ALL STRIPING (LONG LINE) AND PAVEMENT MARKINGS SHALL BE RETROREFLECTIVE THERMOPLASTIC.
- NOTE 4: ALL SIGNS SHALL BE OF HIGH INTENSITY (FHWA TYPE III/IV) RETROREFLECTIVE SHEETING EXCEPT:
- A. STOP SIGNS SHALL BE DIAMOND GRADE (FHWA TYPE VII IN RURAL SETTINGS AND TYPE IX IN URBAN SETTINGS) RETROREFLECTIVE SHEETING.
 - B. "NO PARKING" SIGNS SHALL BE OF SUPER ENGINEERING GRADE (FHWA TYPE II) RETROREFLECTIVE SHEETING.
 - C. SCHOOL SIGNS SHALL BE OF DIAMOND GRADE (FHWA TYPE IX) FLUORESCENT YELLOW-GREEN (FYG) RETROREFLECTIVE SHEETING.
 - D. STREET NAME MARKERS SHALL BE OF DIAMOND GRADE (FHWA TYPE IX) RETROREFLECTIVE SHEETING AND CONFORM TO COUNTY STANDARD 303.
 - E. CONSTRUCTION SIGNS SHALL BE OF DIAMOND GRADE (FHWA TYPE IX) FLUORESCENT ORANGE RETROREFLECTIVE SHEETING.
- NOTE 5: ALL DELINEATORS, CHANNELIZERS, AND OBJECT MARKERS SHALL BE OF FHWA TYPE VII RETROREFLECTIVE SHEETING.
- NOTE 6: SIGNS SHALL BE MOUNTED ON METAL POSTS SIMILAR TO COUNTY STANDARDS 303(A) AND 303(B).
- NOTE 7: ALL CONFLICTING STRIPING AND PAVEMENT MARKINGS SHALL BE REMOVED BY THE CONTRACTOR. REMOVAL OF EXISTING TRAFFIC STRIPES AND PAVEMENT MARKINGS SHALL BE BY MECHANICAL MEANS IN CONFORMANCE WITH SCAQMD RULE 1140. PAINTING OVER OR "BLACKING OUT" SHALL NOT BE ACCEPTED. THE CONTRACTOR SHALL OBTAIN APPROVAL FROM THE COUNTY ENGINEER ON THE FINAL METHOD OF REMOVAL PRIOR TO PERFORMING THE WORK.
- NOTE 8: ALL CONFLICTING SIGNS SHALL BE REMOVED, RELOCATED, OR COVERED BY THE CONTRACTOR. RELOCATABLE SIGNS SHALL BE INSTALLED AS SPECIFIED ON THE PLANS OR AS DIRECTED BY COUNTY REPRESENTATIVE.
- NOTE 9: ALL UNPROTECTED LOCATIONS RESULTING IN ISOLATED ABRUPT DEPRESSIONS OR ELEVATED OBJECTS (I.E. CATCH BASINS, HEADWALLS, POWER POLES, END TREATMENT OF ASPHALT DIKES AND CONCRETE CURBS) SHALL BE PROTECTED BY DELINEATORS OR BARRIERS PER THE CALIFORNIA MUTCD LATEST EDITION.
- NOTE 10: ALL EXISTING SIGNING, STRIPING AND PAVEMENT MARKINGS (I.E. CROSS STREET STOP, STOP LIMIT LINE, AND CROSSWALK PAVEMENT MARKINGS) NOT SHOWN ON PLANS, IF REMOVED/OBLITERATED, SHALL BE REPLACED/RESTORED OF SAME KIND, AND IN CONFORMANCE WITH THE CALIFORNIA MUTCD LATEST EDITION.
- NOTE 11: THE CONTRACTOR SHALL NOTIFY COUNTY REPRESENTATIVE TO SCHEDULE A FINAL REVIEW (WALK THROUGH) WITH TRAFFIC DIVISION PERSONNEL FOR APPROVAL OF TRAFFIC CONTROL DEVICES PRIOR TO PROJECT ACCEPTANCE.

SIGNING AND STRIPING CONSTRUCTION NOTES

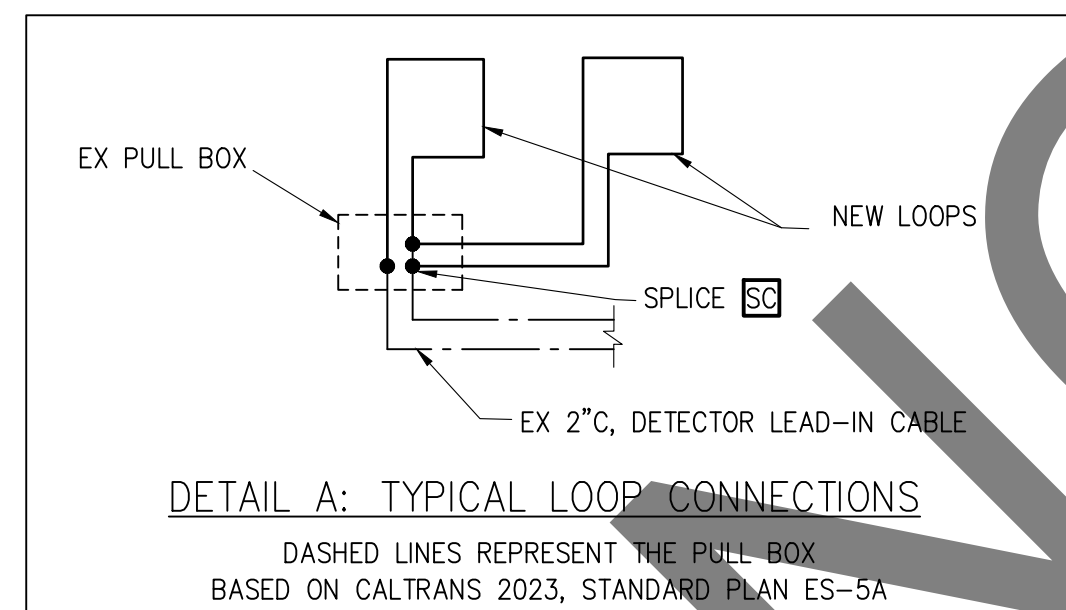
- 1 - REMOVE CONFLICTING STRIPING AND PAVEMENT MARKINGS USING MECHANICAL METHOD AS APPROVED BY THE SAN BERNARDINO COUNTY ENGINEER.
- 2 - INSTALL THERMOPLASTIC 6" WIDE LANE LINE PER CALTRANS STANDARD PLAN A20A, DETAIL 9 (±1,020 L.F. TOTAL)
- 3 - INSTALL THERMOPLASTIC 6" SOLID WHITE LINE AS SHOWN ON PLAN (100 L.F. TOTAL)
- 4 - INSTALL THERMOPLASTIC CHANNELIZING LINE PER CALTRANS STANDARD PLAN A20D, DETAIL 38 (180 L.F. TOTAL)
- 5 - INSTALL THERMOPLASTIC LIMIT LINE PAVEMENT LEGEND PER CALTRANS STANDARD PLAN A24G (±62 S.F. TOTAL)
- 6 - INSTALL THERMOPLASTIC DOUBLE-DOUBLE YELLOW MEDIAN ISLAND STRIPING PER CALTRANS STANDARD PLAN A20B, DETAIL 29 (±460 L.F. TOTAL)
- 7 - INSTALL THERMOPLASTIC DOUBLE YELLOW TWO-DIRECTION STRIPING PER CALTRANS STANDARD PLAN A20A, DETAIL 22 (±125' L.F. TOTAL)
- 8 - INSTALL THERMOPLASTIC LANE DROP LINE PER CALTRANS STANDARD PLAN A20C, DETAIL 37B (±385 L.F. TOTAL)
- 9 - INSTALL THERMOPLASTIC YELLOW CENTERLINE EXTENSION THROUGH INTERSECTION PER CALTRANS STANDARD PLAN A20D, DETAIL 41 (±90 L.F. TOTAL)
- 10 - INSTALL THERMOPLASTIC WHITE CENTERLINE EXTENSION THROUGH INTERSECTION PER CALTRANS STANDARD PLAN A20D, DETAIL 40 (±240 L.F. TOTAL)
- 11 - INSTALL THERMOPLASTIC PAVEMENT MARKING ARROW TYPE IV (L) OR TYPE IV (R) PER CALTRANS STANDARD PLAN A24A (45 S.F. TOTAL)
- 12 - RELOCATE EXISTING CHANNELIZERS TO THE MIDDLE OF NEW DOUBLE YELLOW STRIPE INDICATED ON PLANS AT 6' CENTER-TO-CENTER EACH, REPLACE IN KIND CHANNELIZERS THAT ARE FOUND IN BAD CONDITION, AND FURNISH AND INSTALL ADDITIONAL IN KIND CHANNELIZERS AS DIRECTED BY THE ENGINEER IN THE FIELD. REMOVE CONFLICTING BASE AND RESTORE PAVEMENT SURFACE AS APPROVED BY THE ENGINEER IN THE FIELD (±125 L.F. TOTAL, AT 6' CENTER-TO-CENTER).
- 13 - INSTALL NEW TYPE E DETECTOR LOOPS INDICATED ON PLAN PER CALTRANS STANDARD PLANS ES-5A AND ES-5B. SPLICE NEW LOOP CABLES TO EXISTING DLCS IN EXISTING PULL BOX PER CALTRANS STANDARD PLAN ES-13A. (2 EACH TOTAL). SEE DETAIL "A" ON PLAN.
- 14 - FURNISH AND INSTALL NEW SIGN AND POST INDICATED ON PLAN PER CA MUTCD FIGURE 2A-2 (CA).
- 15 - INSTALL THERMOPLASTIC PAVEMENT MARKING WORDS "KEEP" "CLEAR" PER CALTRANS STANDARD PLAN A24E (102 S.F. TOTAL)
- 16 - RESET EXISTING CITY/COUNTY LIMITS MARKER SHOWN ON PLAN.
- 17 - INSTALL THERMOPLASTIC PAVEMENT MARKING SHARED ROADWAY BICYCLE PER CALTRANS STANDARD PLAN A24C (23 S.F. TOTAL).

STANDARD NOTES

- AB - ABANDON. IF APPLIED TO CONDUIT, REMOVE CONDUCTORS.
- RS - REMOVE AND SALVAGE EQUIPMENT.
- SC - SPLICE NEW TO EXISTING CONDUCTORS.

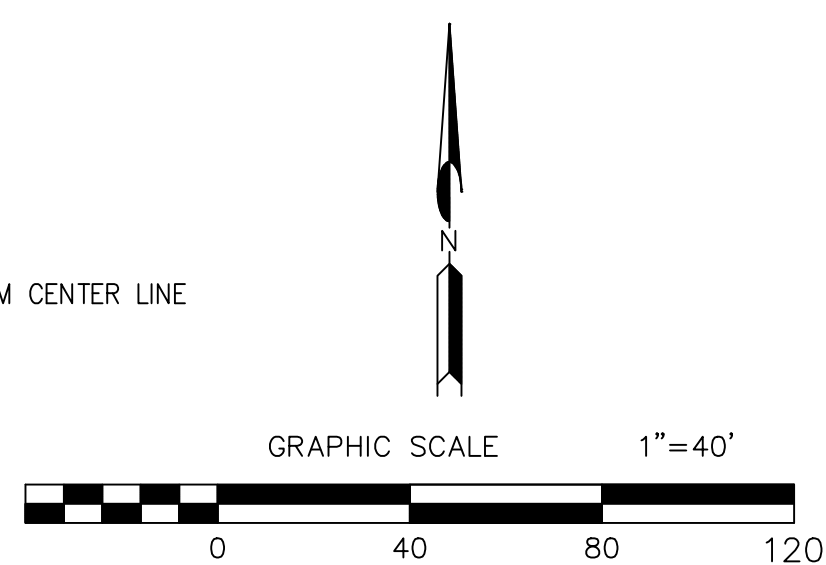
LEGEND

- (S) - TRAFFIC SIGNAL
- - EXISTING SIGN
- - - - - PROPOSED SIGN
- - - - - RIGHT-OF-WAY
- - - - - EXISTING CURB & GUTTER
- - - - - PROPOSED CURB & GUTTER
- - - - - EXISTING STRIPING TO REMAIN
- - - - - EXISTING STRIPING TO BE REMOVED
- - - - - PROPOSED STRIPING
- - - - - EXISTING SIDEWALK
- - - - - RED CURB
- - - - - CENTERLINE



ABBREVIATIONS

- CF: CURB FACE
- BEG: BEGINNING
- EX: EXISTING
- L.T.: OFFSET LEFT FROM CENTER LINE
- STA: STATION



THIS PLAN IS ACCURATE FOR SIGNING AND STRIPING ONLY

Permit No. 08 - 24 - N - MC - 0570
08 - SBd - 71 - PM 0.27

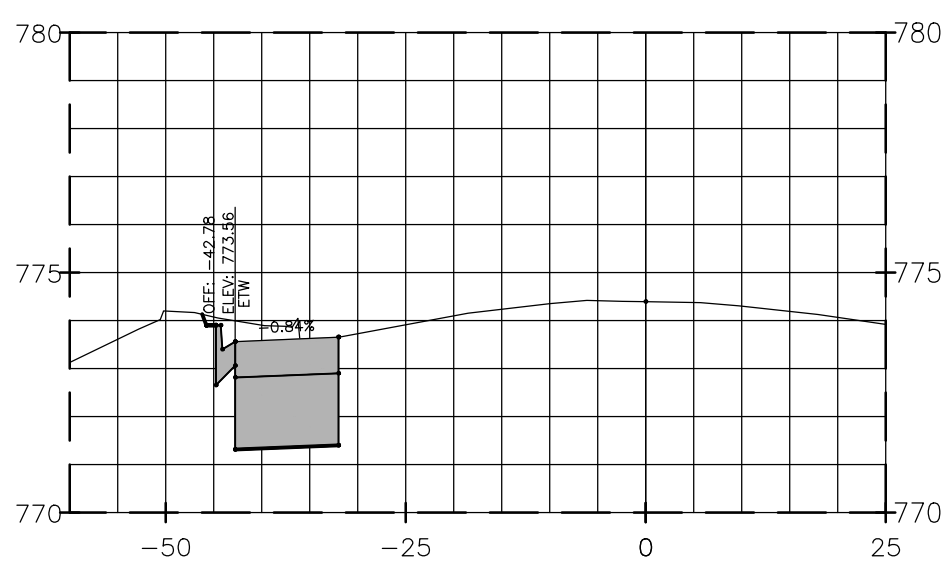
MARK	CHANGES	RESIDENT ENGINEER	DATE
	NO CHANGES		

FIELD CHANGES



SAN BERNARDINO COUNTY DEPARTMENT OF PUBLIC WORKS			
DESIGNED BY:	DRAWN BY:	CHECKED BY:	RECOMMENDED BY:
NA	NA	JHC/LL	ANTHONY PHAM, P.E. TRAFFIC DIVISION ENGINEERING MANAGER
LEI LL, P.E. SUPERVISING ENGINEER	8/21/2024 DATE	GRANT MANN, M.S., P.E. DEPUTY DIRECTOR	8/22/24 DATE

SIGNING AND STRIPING PLAN				
RIVERSIDE DRIVE AT RIVERSIDE TERRACE EAST OF SR-71 FREEWAY				
J.L. REF.	W.O. NO.	PLAN SCALE	SHT. NO.	TOT. SHTS.
J.L.12184		1"=40'	7	7



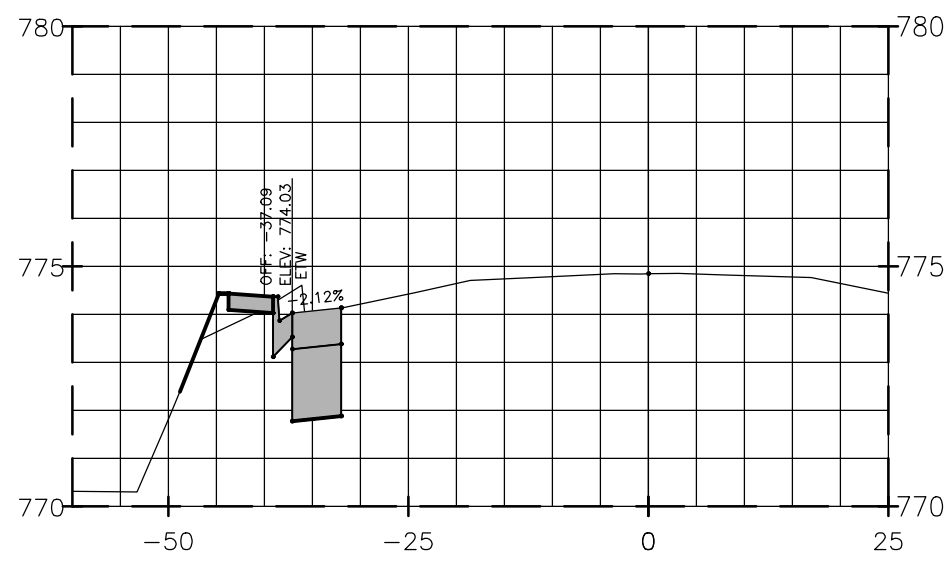
28+40

EARTHWORK VOLUME TABLE FOR:

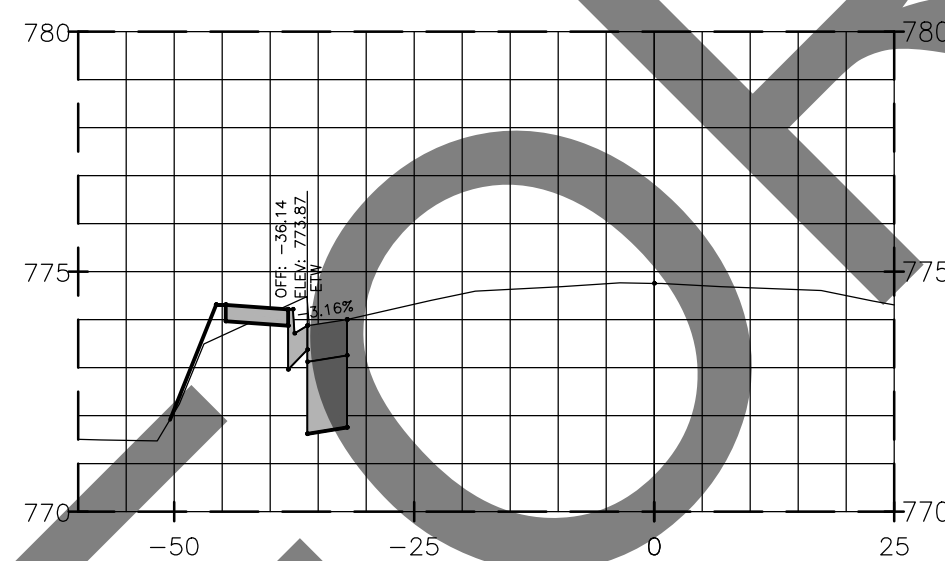
Station	Cut Area	Fill Area	Cut Vol	Fill Vol	Cum Cut Vol	Cum Fill Vol	Net Vol
26+35.52	11.33	0.00	0.00	0.00	0.00	0.00	0.00
26+55.21	11.64	0.00	8.38	0.00	8.38	0.00	8.38
26+75.00	12.62	0.01	8.89	0.00	17.27	0.00	17.26
26+83.92	13.95	0.00	4.39	0.00	21.66	0.00	21.65
27+16.58	16.64	1.71	18.50	1.03	40.16	1.04	39.12
27+41.29	16.01	3.46	14.94	2.36	55.10	3.40	51.70
27+62.89	14.94	2.30	12.38	2.30	67.48	5.71	61.78
27+89.08	13.43	2.10	13.76	2.13	81.24	7.84	73.40
28+25.00	11.03	0.79	16.27	1.92	97.51	9.76	87.75
28+40.21	29.16	0.00	11.32	0.22	108.83	9.98	98.85

TOTAL CUT= 103.86 CY
 AC REMOVAL AREA 470 SF X 0.6"/27= 10.4 CY (-)
 FILL= 12.7 CY (-)
 80.76 CY X 80%= 64.6 CY
 APPROX 60 CY EXPORT

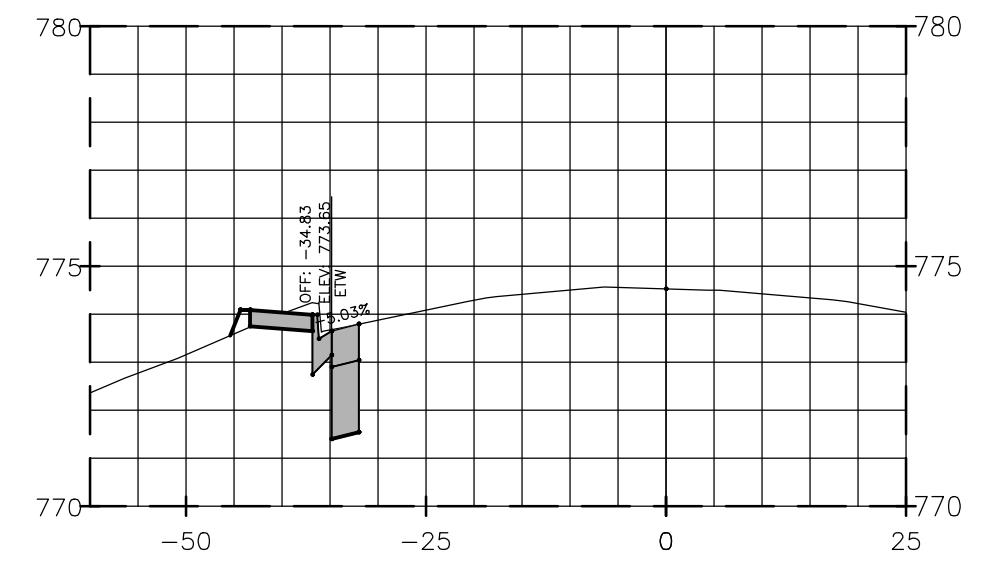
Permit No. 08-24-N-MC-0570
 08-SBd-71-PM 0.27



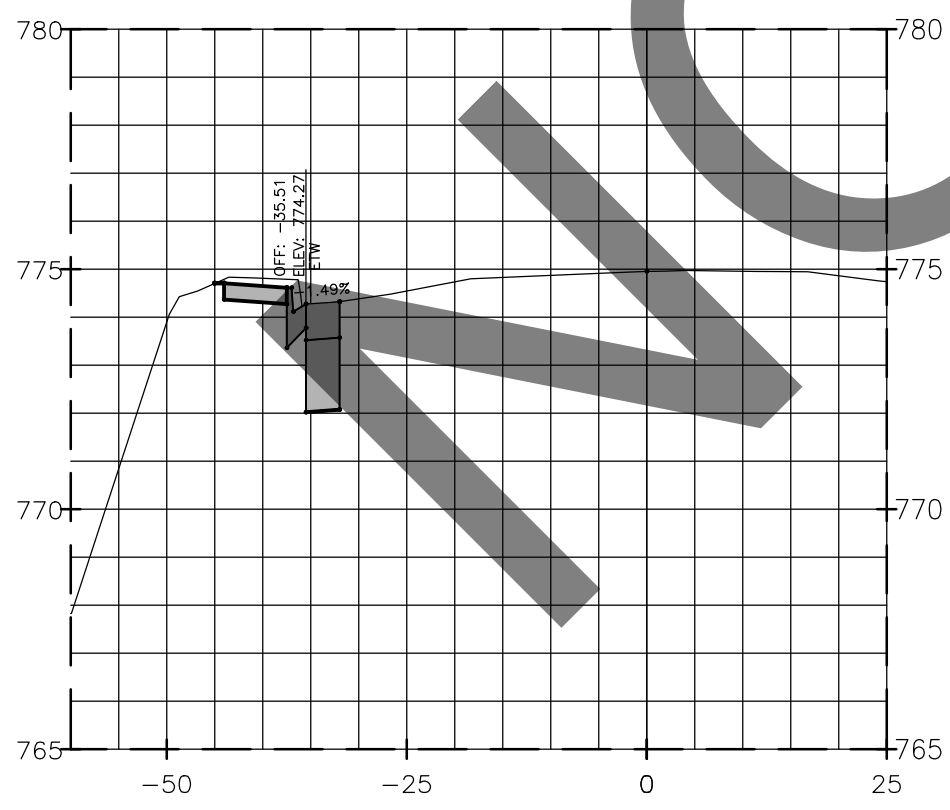
27+63



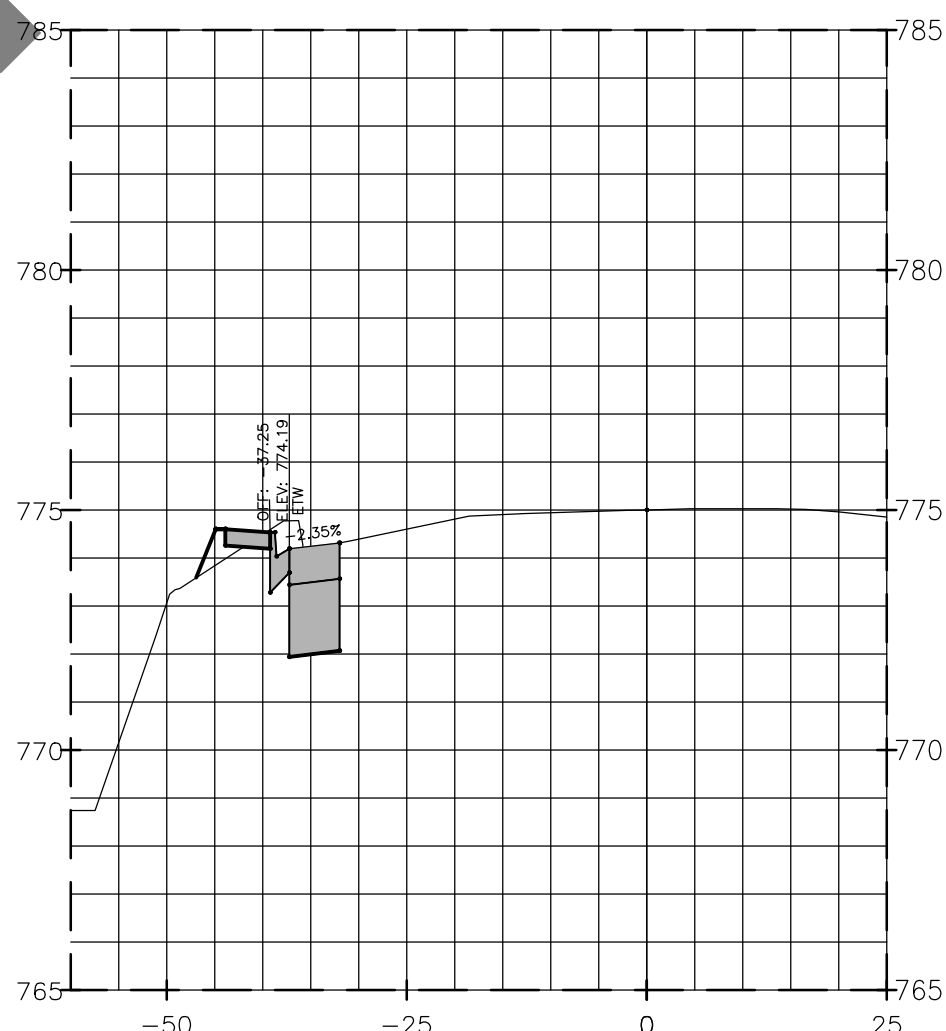
27+89



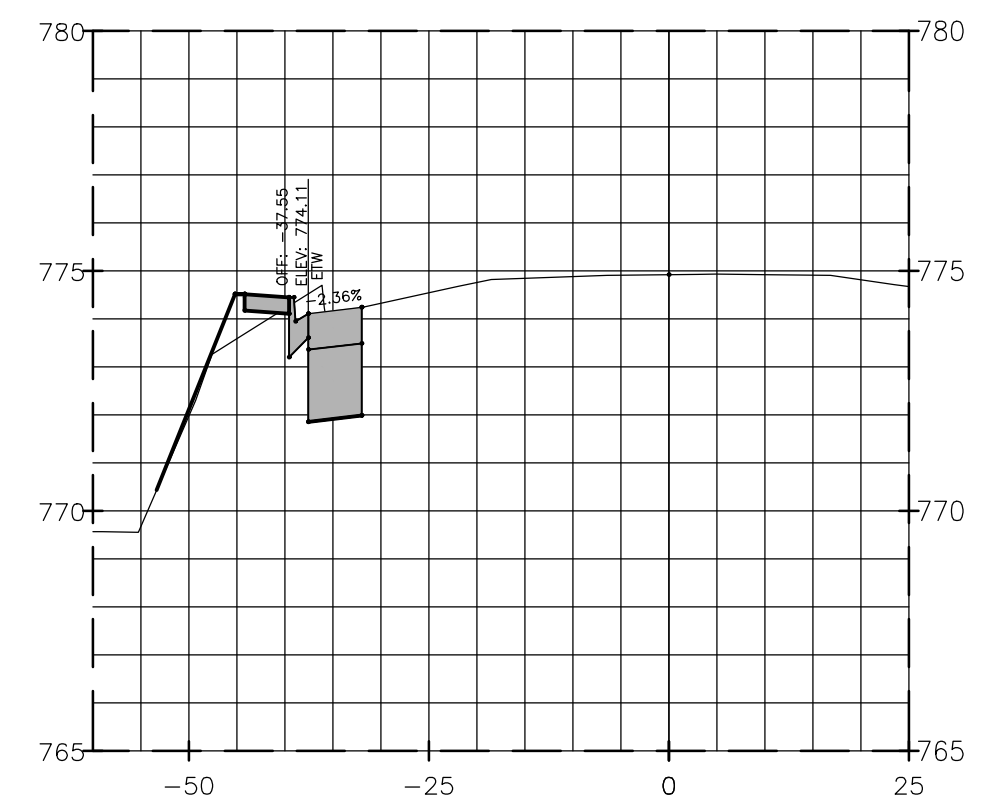
28+25



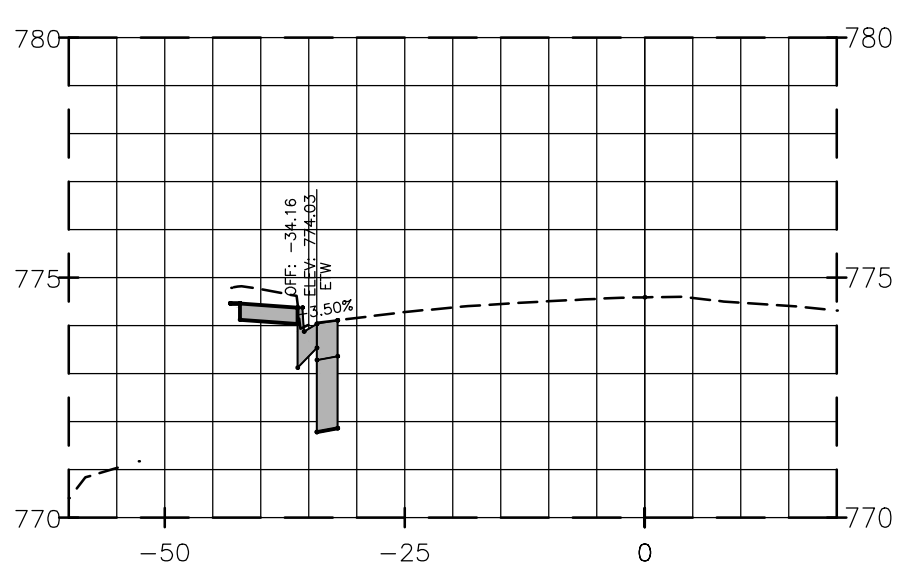
26+84



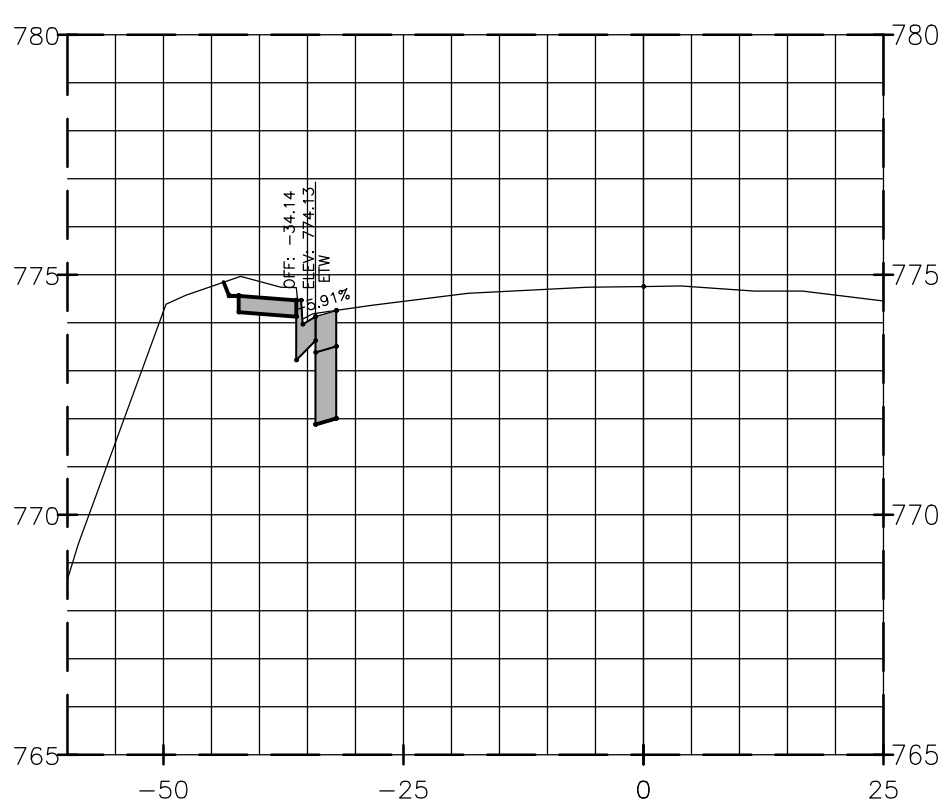
27+17



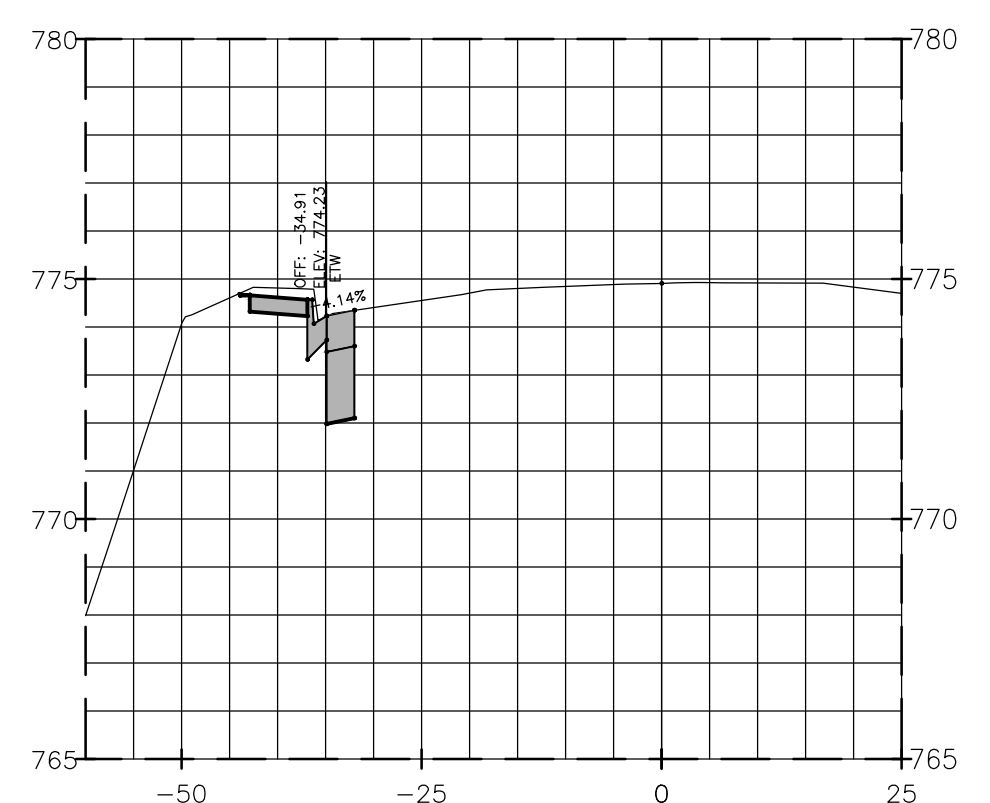
27+41



26+36



26+55



26+75