



Department of Public Works

- Flood Control
- Operations
- Solid Waste Management
- Special Districts
- Surveyor
- Transportation

www.SBCounty.gov

Noel Castillo, P.E.
Director

Byanka Velasco, P.E.
Assistant Director

David Doublet, M.S., P.E.
Assistant Director

January 22, 2025

Mr. Terry Thompson
Real Estate Services Department
385 N. Arrowhead Ave., 3rd Floor
San Bernardino, CA 92415-0180

SUBJECT: Update of 2012 letter report and 2011 Report Findings; “Habitat Value Assessment for the County of San Bernardino Chino/Ontario Dairy Land Properties”

Dear Mr. Thompson:

This letter report is in response to a request by the San Bernardino County Administrative Office (CAO) to update the habitat assessments for the “unsold” Prop 70 dairy properties in the Chino Ontario area that was originally prepared by Lilburn Corporation in 2011 and updated in 2012. This update includes a literature search and field evaluation of six properties (Figure 1) located south of Riverside Drive, north of Merrill Avenue, east of Euclid Avenue and west of S. Grove Avenue. Updated figures of these properties reflecting current usage are also included.

Literature Search Results:

A review of the California Natural Diversity Database (CNDDDB) for the Ontario, Prado Dam, Guasti, and Corona North USGS Topographic 7.5” Quadrangles indicated a potential for 73 sensitive species. Of those, twenty species are either federally and/or state listed as Endangered, Threatened, or Proposed/Candidate for listing. Based on the existing site conditions evaluated on January 6, 2025, the probability of occurrence for two of the species originally identified in the January 2011 report, burrowing owl (*Athene cunicularia*) and tricolored blackbird (*Agelaius tricolor*), remain unchanged. An additional species not listed in 2011, Crotch’s bumblebee (*Bombus crotchii*), has a very low potential to occur on these properties.

Field Evaluation Results:

A field evaluation of the six dairy properties was conducted on January 6, 2025. Minor changes in land use were noted (Figures 1 – 7). No sensitive habitats were observed but conditions remain favorable for foraging by a variety of bird species including tricolored blackbird, and a variety of bat species. These properties include suitable habitat for burrowing owl which have the potential to occupy suitably sized rodent burrows anywhere on the properties.

BOARD OF SUPERVISORS

COL. PAUL COOK (RET.)
Vice Chairman, First District

JESSE ARMENDAREZ
Second District

DAWN ROWE
Chair, Third District

CURT HAGMAN
Fourth District

JOE BACA, JR.
Fifth District

Luther Snoke
Chief Executive Officer

Conclusions:

In compliance with the California Wildlife, Coastal, and Park Land Conservation Act and SB 1124, an updated assessment of six County-managed conservation properties was conducted. Results of the assessment conclude that the habitat value of all the properties is consistent with agricultural and/or open space, is useful for avian and bat foraging activities, provides suitable habitat for burrowing owl, but is not valuable for native habitat preservation or protection.



Karen Carter
Senior Ecological Resources Specialist
Environmental Management Division
San Bernardino County Department of Public Works

ABC:KC:aa

Attachments:

- Figure 1 – Properties evaluated in current re-assessment
- Figure 2 – Property 1 Te Velde Dairy
- Figure 3 – Property 2 Moons Dairy
- Figure 4 – Property 3 James Beahm Dairy
- Figure 5 – Property 4 G & C Cattle Ranch
- Figure 6 – Property 5 Jacques Dairy
- Figure 7 – Property 6 Vander Schaaf Dairy

Figures

Figure 1 – Properties evaluated in current re-assessment



	Property	APNs	Land Plan Site	Acreage
1	TeVelde	1054-051-01 & 02, 1053-061-01 & 02, 1054-251-01 & 02 and 1054-301-01 & 02	6	74.64
2	Moons	1053-521-01 & 02, 1053-591-01 & 02	8	36.93
3	Beahm	1052-151-09 & 10	7	6.97
4	G&G	1053-601-01	9	9.02
5	Jacques	1053-181-01 & 02, 1053-311-01 & 02	4	37.12
6	John Vander Schaaf	1053-141-01 & 02, 1053-131-01 & 02	5	36.77
			Total Acres	201.25

Figure 2 – Property 1 Te Velde Dairy

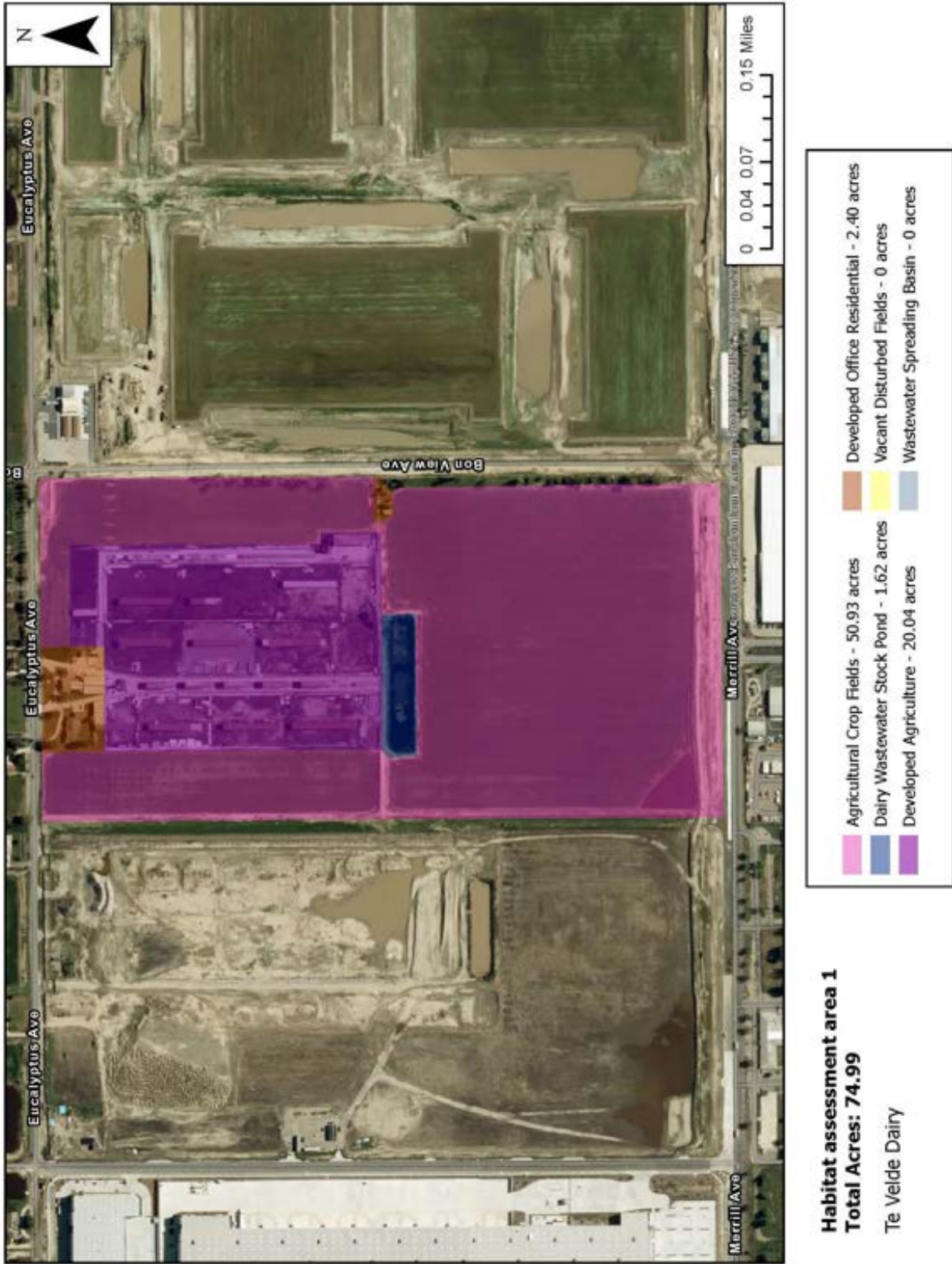


Figure 3 – Property 2 Moons Dairy

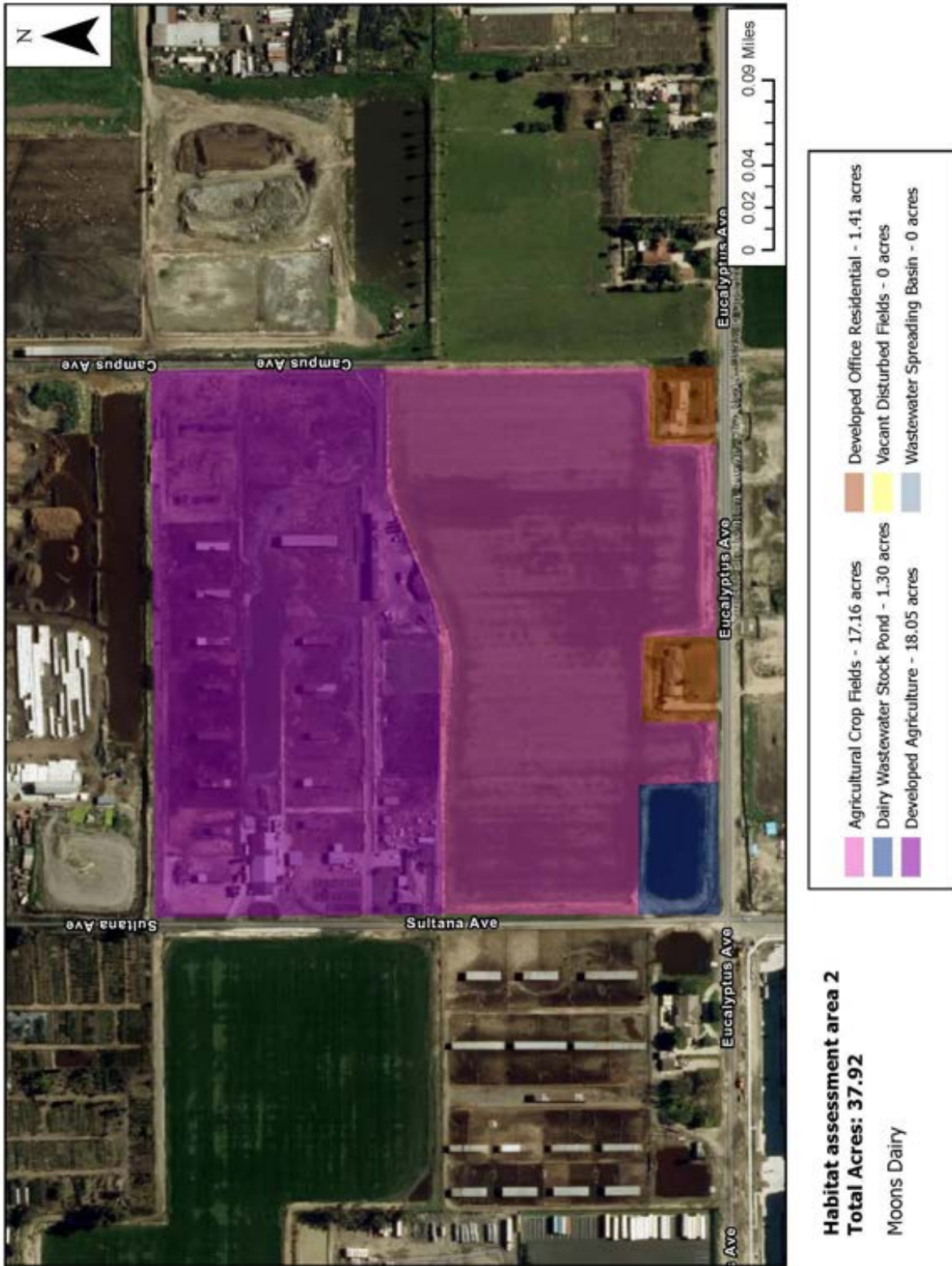


Figure 4 – Property 3 James Beahm Dairy



Figure 5 – Property 4 G & C Cattle Ranch

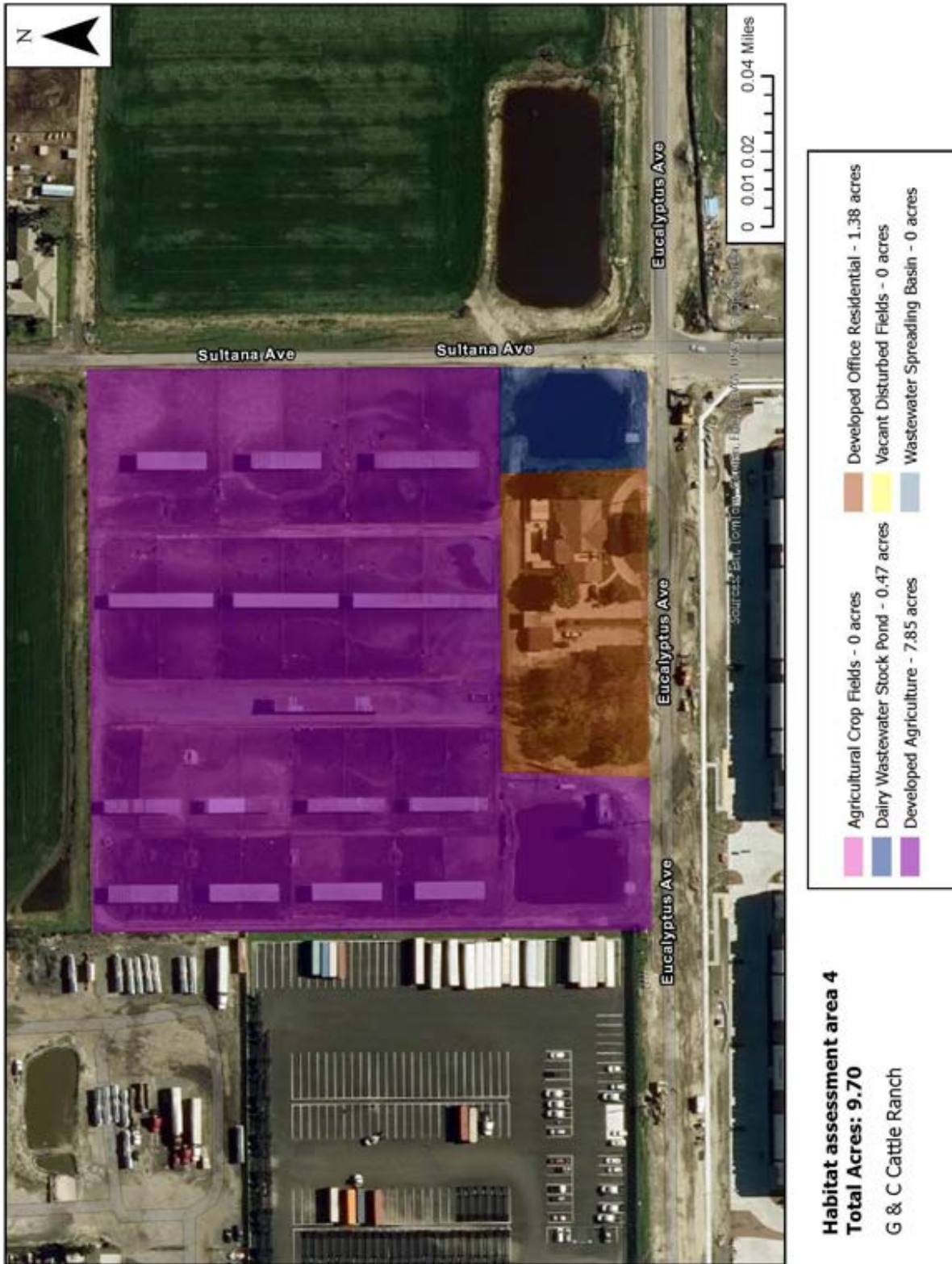
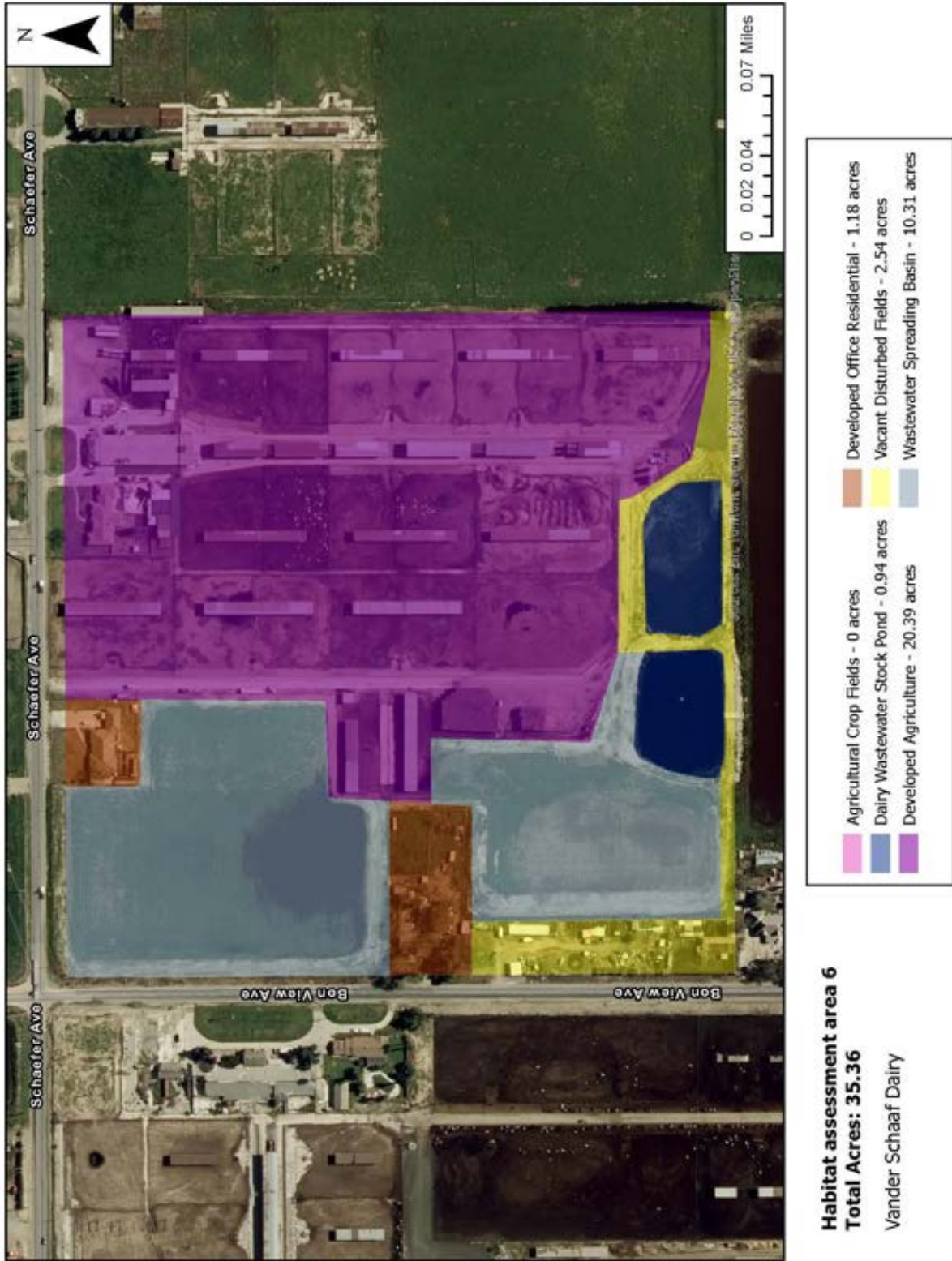


Figure 6 – Property 5 Jacques Dairy



Figure 7 – Property 6 Vander Schaaf Dairy



PROPOSITION 70 HABITAT ASSESSMENT FOR ONE PARCEL IN THE CITY OF CHINO

Proposition 70 Habitat Assessment

Prepared for

San Bernardino County Department of Public Works

Submitted by



April 2025

CONTENTS

1. Introduction.....	1
2. Project Location	1
3. Methodology	1
3.1. Literature Review	1
3.2. Field Surveys.....	3
3.3. Vegetation.....	3
4. Results.....	4
4.1. General Biological Survey Results	4
4.2. Vegetation and Land Use	4
4.3. Special-Status Species	4
4.3.1. Other special-status species	7
4.4. Designated Critical Habitat	8
4.5. Sensitive Natural Communities.....	8
4.6. Wildlife Corridors	8
5. Conclusion	8
6. References.....	9

TABLES

Table 1. Definitions of Special-Status Species.....	2
Table 2. State and Federally Listed Species Known from the Region.....	5

ATTACHMENTS

Attachment 1. Figures	
Figure 1. Habitat Assessment Area	
Figure 2. Vegetation and Land Cover	
Attachment 2. California Natural Diversity Database Records	
Attachment 3. Observed Species List	
Attachment 4. Photo Exhibit	

1. INTRODUCTION

Aspen Environmental Group (Aspen) conducted a Proposition 70 habitat assessment at a single parcel in the City of Chino (project), comprising 22.41 acres. The assessment was completed on behalf of the San Bernardino County Department of Public Works (County), to assist in evaluating potential future use of the parcel for agriculture, recreation, and conservation purposes.

2. PROJECT LOCATION

The project site, accessor parcel number (APN) 105722118, is located in the southeastern corner of the City of Chino approximately 0.5 miles east of Prado Regional Park, north of the Prado Basin. The site is located within an active channel, approximately 1.2 miles downstream of the inlet of Mill Creek Wetlands, and the transition of Cucamonga Creek from a concrete-lined channel to a softbottom drainage (Figure 1, Attachment 1). The project is entirely within the Corona North, California, U.S. Geological Survey 7.5-minute Quadrangle (USGS, 2022). The site is bounded by McCarty Road to the south, upland open space to the west, and a partially developed upland area to the east. Surrounding land uses include open space, agriculture, residential homes, and a mix of private-recreation and light commercial operations. The elevation of the site ranges from approximately 510 to 530 feet above mean sea level.

3. METHODOLOGY

3.1. Literature Review

Prior to conducting field surveys, Aspen biologists reviewed available literature to identify special-status biological resources known from the vicinity of the project site. Aspen biologists reviewed the following literature and databases.

- Data from the California Department of Fish and Wildlife (CDFW), California Natural Diversity Database (CNDDDB) Rarefind 5 (CDFW, 2025a) was reviewed for the following USGS 7.5-minute topographic quadrangles (topo quads): Corona North, Black Star Canyon, Prado Dam, Ontario, Guasti, Fontana, Riverside West, Lake Mathews, and Corona South. CNDDDB search results are provided in Attachment 2.
- California Native Plant Society's (CNPS) Electronic Inventory of Rare and Endangered Vascular Plants of California (CNPS, 2025), for the same topographic quads.
- Information for Planning and Consultation (IPaC) (USFWS, 2025a).
- U.S. Fish and Wildlife Service (USFWS) database of designated Critical Habitat (USFWS, 2025b).
- iNaturalist Online Database (iNaturalist, 2025).
- eBird website (eBird, 2025).

Plant and wildlife taxa are considered to be special-status species if they are classified in one or more of the categories listed in Table 1.

Table 1. Definitions of Special-Status Species

Species Designation	Agency	Definition
Federal Endangered	USFWS	A species that is in danger of extinction throughout all or a significant portion of its range.
Federal Threatened	USFWS	A species that is likely to become endangered within the foreseeable future throughout all or a significant portion of its range.
Federal Candidate	USFWS	A species the US Fish and Wildlife Service (USFWS) has designated as a candidate for listing under Section 4 of the federal Endangered Species Act (ESA), published in its annual candidate review, and defined as a species that has sufficient information on its biological status and threats to propose it as endangered or threatened under the ESA, but for which development of a proposed listing regulation is precluded by other higher priority listing activities.
Federal Proposed	USFWS	A species that the USFWS has proposed for listing under Section 4 of the ESA, by publishing a Proposed Rule in the Federal Register.
Protected under the federal Bald and Golden Eagle Protection Act (BGEPA)	USFWS	Bald and golden eagles are protected from take, including harassment, except as permitted by USFWS.
State Endangered	CDFW	A species that is in serious danger of becoming extinct throughout all or a significant portion of its range due to one or more causes, including loss or change in habitat, overexploitation, predation, competition, or disease.
State Threatened	CDFW	A species that, although not presently threatened with extinction, is likely to become an endangered species in the foreseeable future in the absence of special protection and management efforts.
State Rare	CDFW	A species, subspecies, or variety is rare when, although not presently threatened with extinction, it is in such small numbers throughout its range that it may become endangered if its present environment worsens.
State Candidate	CDFW	A species that has been officially noticed by the California Fish and Game Commission as being under review by the CDFW for addition to the threatened or endangered species lists. CDFW candidate species are given no extra-legal protection under state laws.
Fully Protected (FP)	CDFW	Animal species fully protected under the California Fish and Game Code. The CDFW may not issue take authorization except for scientific purposes or as provided under SB 618 (2011).
Species of Special Concern	CDFW	<p>A species, subspecies, or distinct population of an animal native to California that currently satisfies one or more of the following (not necessarily mutually exclusive) criteria:</p> <ul style="list-style-type: none"> Is extirpated from the state or, in the case of birds, in its primary seasonal or breeding role. Is on the federal, but not state list, of threatened or endangered species. Meets the state definition of threatened or endangered but has not formally been listed. Is experiencing or formerly experienced serious (noncyclical) population declines or range retractions (not reversed) that, if continued or resumed, could qualify it for state threatened or endangered status; or Has naturally small populations exhibiting high susceptibility to risk from any factor(s) that if realized, could lead to declines that would qualify it for state threatened or endangered status. <p>This is an administrative designation and carries no formal legal status. This designation is intended to focus attention on animals at conservation risk, to stimulate research on poorly known species, and to achieve conservation and recovery before these species meet the California Endangered Species Act (CESA) criteria for listing.</p>

Table 1. Definitions of Special-Status Species

Species Designation	Agency	Definition
Watch List	CDFW	Taxa that were previously Species of Special Concern but no longer merit that status or which do not meet criteria for designation as Species of Special Concern, but for which there is concern and a need for additional information to clarify status.
Special Animal	CDFW	An animal species that is tracked in the CNDDDB but has no other status at the state or federal level.
California Rare Plant Rank (CRPR) 1A	CDFW	Plants presumed to be extinct in California.
CRPR 1B	CDFW	Plants rare or endangered in California and elsewhere.
CRPR 2A	CDFW	Plants presumed extinct in California but more common elsewhere.
CRPR 2B	CDFW	Plants rare or endangered in California but more common elsewhere.
CRPR 3	CDFW	Plants about which more information is needed – a review list.
CRPR 4	CDFW	Plants of limited distribution – a watch list.

3.2. Field Surveys

Aspen conducted a site visit on March 31, 2025, to map vegetation, survey for sensitive biological resources, and evaluate the suitability of the habitat to support a variety of wildlife and plant species. The assessment was conducted by Aspen biologist Jacob Aragon, who conducted reconnaissance level biological surveys by walking throughout the project site. The field surveys targeted terrestrial and volant special-status wildlife including least Bell's vireo (*Vireo bellii pusillus*), Stephens's kangaroo rat (*Dipodomys stephensi*), and tricolored blackbird (*Agelaius tricolor*). Invertebrate species such as Crotch's bumble bee (*Bombus crotchii*) were also considered during surveys. Observations of all special-status species and their sign were recorded on ArcGIS Field Maps using a differential GPS unit with sub-meter accuracy.

3.3. Vegetation

Vegetation mapping was completed by drawing tentative boundaries on high-resolution aerial imagery of the project site, using descriptions adapted from *A Manual of California Vegetation* (Sawyer et al., 2009) and *Preliminary Descriptions of the Terrestrial Natural Communities of California* (Holland, 1986). Vegetation types with overlapping characteristics were grouped into general categories to align with previous habitat assessments completed in adjoining parcels and to reflect broader patterns of wildlife habitat use. These boundaries were then digitized into Geographic Information System (GIS) shapefiles to produce vegetation maps (Figure 2, Attachment 1). Vegetation was mapped digitally using ArcGIS (version 10.7) and one-foot pixel aerial imagery. The smallest mapping unit was approximately 0.05-acre, and most mapped vegetation boundaries are accurate to within approximately five feet. Any vegetation map is subject to imprecision for several reasons:

1. Vegetation types tend to intergrade on the landscape so that there are no true boundaries in the vegetation itself. In these cases, a mapped boundary represents best professional judgment.
2. Vegetation types as they are named and described tend to intergrade; that is, a given stand of real-world vegetation may not fit into any named type in the classification scheme used. Thus, a mapped and labeled polygon is given the best name available in the classification, but this name does not imply that the vegetation unambiguously matches its mapped name.

3. Vegetation tends to be patchy. Small patches of one named type are often included within mapped polygons of another type. The size of these patches varies, depending on the minimum mapping units and scale of available aerial imagery.

4. RESULTS

4.1. General Biological Survey Results

Wildlife observed during the field surveys included species common in the region, such as black phoebe (*Sayornis nigricans*), common raven (*Corvus corax*), northern mockingbird (*Mimus polyglottos*), Red-shouldered hawk (*Buteo lineatus*), California ground squirrel (*Otospermophilus beecheyi*), desert cottontail (*Sylvilagus audubonii*), side-blotched lizard (*Uta stansburiana*), and western fence lizard (*Sceloporus occidentalis*). All plant and wildlife species identified during the survey were recorded in field notes and are listed in Attachment 3.

4.2. Vegetation and Land Use

The project site is located within the floodplain of an active channel and supports a mix of riparian, facultative-wetland, and non-native plant species. During the survey, the creek was actively flowing through the western portion of the site, with signs of past high-flow events and side channels evident across the entire site. In several sections, the channel supported broad flows approximately 10 to 15 feet wide and 4 to 5 feet deep, shaded by overhanging native vegetation.

Following survey methodology, the project site was mapped broadly as riparian/wetland habitat (Figure 2, Attachment 1). Finer-scale vegetation types, though outside the scope of this assessment, were observed within the site and included willow (*Salix* spp.) riparian woodland and forest, mulefat (*Baccharis salicifolia*) thickets, eucalyptus (*Eucalyptus* spp.) groves, and perennial pepper weed (*Lepidium latifolium*)-prickly lettuce (*Lactuca serriola*) patches. Vegetation density varied across the site, with native trees and shrubs, primarily willows and mulefat, dominating much of the mid-layer and canopy. In the northern portion of the site, outside the active channel, the canopy was dominated by eucalyptus trees. These non-native trees commonly occur alongside riparian species near channel margins, especially in areas with an agricultural history. Although non-native, eucalyptus trees can provide suitable nesting and habitat for a variety of bird species, including riparian-associated raptors such as red-shouldered hawk.

Understory cover across the site was made up of a mix of native and non-native annual species, but was dominated by perennial pepper weed, prickly lettuce, poison hemlock (*Conium maculatum*), and fennel (*Foeniculum vulgare*). These weedy non-native species likely re-colonize the site from adjacent upland areas following disturbance from high-flow events. Native understory cover included Douglas mugwort (*Artemisia douglasiana*), fiddleneck (*Amsinckia* spp.), and willow-herb (*Epilobium ciliatum*). Representative photos of the project site are provided in Attachment 4.

4.3. Special-Status Species

The literature review identified 30 state and/or federally listed species as threatened or endangered or candidates for listing with occurrences documented in the region of the project site. This includes nine plant species and 21 wildlife species, as presented in Table 2. An additional 62 non-listed special-status plant species and 42 wildlife species have documented occurrences in the region.

Table 2. State and Federally Listed Species Known from the Region

Scientific Name	Common Name	Federal Listing	State Listing
PLANTS			
<i>Allium munzii</i>	Munz's onion	Endangered	Threatened
<i>Ambrosia pumila</i>	San Diego ambrosia	Endangered	None
<i>Arenaria paludicola</i>	marsh sandwort	Endangered	Endangered
<i>Astragalus brauntonii</i>	Braunton's milk-vetch	Endangered	Endangered
<i>Berberis nevinii</i>	Nevin's barberry	Endangered	Endangered
<i>Chloropyron maritimum</i> ssp. <i>maritimum</i>	salt marsh bird's-beak	Endangered	Endangered
<i>Chorizanthe parryi</i> var. <i>fernandina</i>	San Fernando Valley spineflower	None	Endangered
<i>Dodecahema leptoceras</i>	slender-horned spineflower	Endangered	Endangered
<i>Eriastrum densifolium</i> ssp. <i>sanctorum</i>	Santa Ana River woollystar	Endangered	Endangered
AMPHIBIANS			
<i>Anaxyrus californicus</i>	arroyo toad	Endangered	None
<i>Spea hammondi</i>	western spadefoot	Proposed Threatened	None
BIRDS			
<i>Agelaius tricolor</i>	tricolored blackbird	None	Threatened
<i>Athene cunicularia</i>	burrowing owl	None	Candidate Endangered
<i>Buteo swainsoni</i>	Swainson's hawk	None	Threatened
<i>Coccyzus americanus occidentalis</i>	western yellow-billed cuckoo	Threatened	Endangered
<i>Empidonax traillii extimus</i>	southwestern willow flycatcher	Endangered	Endangered
<i>Haliaeetus leucocephalus</i>	bald eagle	Delisted	Endangered
<i>Laterallus jamaicensis coturniculus</i>	California black rail	None	Threatened
<i>Polioptila californica californica</i>	coastal California gnatcatcher	Threatened	None
<i>Vireo bellii pusillus</i>	least Bell's vireo	Endangered	Endangered
CRUSTACEANS			
<i>Branchinecta sandiegonensis</i>	San Diego fairy shrimp	Endangered	None
FISH			
<i>Catostomus santaanae</i>	Santa Ana sucker	Threatened	None
<i>Oncorhynchus mykiss irideus</i> pop. 10	steelhead - southern California DPS	Endangered	Candidate Endangered
<i>Rhinichthys gabrielino</i>	Santa Ana speckled dace	Proposed Threatened	None
INSECTS			
<i>Bombus crotchii</i>	Crotch's bumble bee	None	Candidate Endangered
<i>Euphydryas editha quino</i>	quino checkerspot butterfly	Endangered	None
<i>Rhaphiomidas terminatus abdominalis</i>	Delhi Sands flower-loving fly	Endangered	None
MAMMALS			
<i>Dipodomys merriami parvus</i>	San Bernardino kangaroo rat	Endangered	Endangered
<i>Dipodomys stephensi</i>	Stephens' kangaroo rat	Threatened	Threatened
REPTILES			
<i>Actinemys pallida</i>	southwestern pond turtle	Proposed Threatened	None

No state or federally listed or candidate species were detected on the project site during the field surveys. No federally or state-listed plant species are expected to occur within the project site. Based on nearby records of listed species and the suitability of available habitat within the project site, the following wildlife species were identified as having at least a low potential to occur within the project site:

Least Bell's vireo (*Vireo bellii pusillus*). Least Bell's vireo is federally, and state listed as endangered under the Endangered Species Act (ESA) and California Endangered Species Act (CESA). Least Bell's vireo are spring migrants that arrive in southern California to breed after wintering in Baja California Sur. During the breeding season, it is a low-elevation riparian obligate that inhabits dense, willow-dominated habitats with lush understory vegetation and in the immediate vicinity of water. The project site contains designated critical habitat for the species, and suitable foraging and nesting habitat is present. Historical observations have been documented within the site and its vicinity, and recent nearby records have confirmed its continuing presence in the area. Least Bell's vireo has a high potential to occur on the project site.

Southwestern pond turtle (*Actinemys pallida*). Southwestern pond turtle has been proposed for federal listing as a threatened species under the ESA and is considered a Species of Special Concern by the CDFW. These turtles inhabit permanent or nearly permanent bodies of water in a wide variety of habitat types but rely on nearby upland areas for nesting and overwintering (Hansen and Shedd, 2025). Suitable basking sites, such as partially submerged logs, vegetation mats, or open mud banks are essential for this species. Southwestern pond turtles feed on aquatic plants, insects, worms, fish, amphibian eggs and larvae, crayfish, and carrion (Stebbins, 2003). The species was not detected during the surveys, but there are historical records located approximately two miles east of the project in the floodplain of the Santa Ana River. The site contains suitable foraging and basking habitat, and suitable upland nesting habitat is present to the west. Southwestern pond turtle has a moderate potential to occur on the project site.

Southwestern willow flycatcher (*Empidonax traillii extimus*). Southwestern willow flycatcher is listed under the ESA and the CESA as endangered. Southwestern willow flycatcher is a riparian-obligate species that nests and forages for insects within dense, structurally complex streamside vegetation. The species was formerly a common summer resident throughout California but has been extirpated from most of its historic breeding range. The project site contains designated critical habitat for the species, and suitable foraging and nesting habitat is present. The species was not detected during the surveys, but there are historical records located approximately one mile south of the project in the Prado Basin. Based on the vegetation community present on the project site, southwestern willow flycatcher has a moderate potential to occur.

Tricolored blackbird (*Agelaius tricolor*). Tricolored blackbird is a threatened species under the CESA and is a CDFW Species of Special Concern. Tricolored blackbird is a widespread but uncommon species found in wetlands, grasslands, croplands, and pastures throughout the Central Valley and inland coastal habitats of California. The species breeds near fresh water, preferably in emergent wetland with tall dense cattails (*Typha* spp.) or tules, but also in thickets of willows, blackberry, wild rose, and tall herbs. This species was not observed during surveys, but there are recent iNaturalist and eBird records within 0.65 miles north of the site. Although the project site lacks suitable nesting habitat for the species, tricolored blackbird may utilize the project site to forage. Tricolored blackbird has a moderate potential to occur on the project site.

Santa Ana sucker (*Catostomus santaanae*). Santa Ana sucker is a federally threatened fish listed under the ESA and is a CDFW Species of Special Concern. Santa Ana sucker typically occupy riffles, runs, and pools in shallow rivers and streams with moderate flow velocities and require a substantial coverage of coarse substrates for feeding and spawning. Adult sucker often inhabit deeper pools, while juveniles and larvae rely on shallower edgewater habitats (USFWS 2010; Palenscar 2024). Santa Ana sucker favor cool, oxygen rich waters. Although sucker can tolerate seasonal spikes in turbidity and elevated water temperatures of up to 30 °C, they prefer clear water and are most abundant when stream temperatures remain below 22 °C (Moyle 2002; USFWS 2014; Palenscar 2024). Natural upstream and downstream

movement depends on habitat conditions, with flood events playing a key role in dispersal. The project site likely provides suitable aquatic habitat for Santa Ana sucker.

This species was not observed on the project site and is not currently known from this tributary. The nearest recent record of the species is in the Santa Ana River, approximately 1.5 miles southeast of the project site. The project site is hydrologically connected to the Santa Ana River; however, it is unclear whether barriers exist that would prevent the aquatic dispersal of Santa Ana sucker to the site. Additionally, the presence of non-native aquatic predators in this section of the watershed may further limit the species from reaching the project site. As a result, Santa Ana sucker has a low potential to occur.

Western yellow-billed cuckoo (*Coccyzus americanus occidentalis*). Western yellow-billed cuckoo is a federally threatened species, and is listed as endangered under the CESA. The species is a late-spring migrant to western North America and where it formerly bred across a broad range. In California, the western yellow-billed cuckoo's breeding distribution is now thought to be restricted to isolated sites in the Sacramento, Amargosa, Kern, Santa Ana, and Colorado river valleys (USACE and CDFG, 2010). The species primarily nests and forages in large contiguous blocks of riparian habitat, particularly cottonwood–willow riparian woodlands. This species was not observed during surveys, but there are historical records within 0.5 to 2 miles of the project site. Although riparian habitat is present, the project site and surrounding areas are unlikely to support nesting western yellow-billed cuckoo, but may offer limited foraging opportunities for the species. Western yellow-billed cuckoo has a low potential to occur on the project site.

4.3.1. Other special-status species

No other special-status species were detected; however, several non-listed special-status wildlife species have at least a low potential to occur on the project site. The project site provides suitable nesting habitat for several riparian-associated bird species, including the yellow-breasted chat (*Icteria virens*) and yellow warbler (*Setophaga petechia*), both designated as Species of Special Concern by the CDFW. Additionally, the site may support the Cooper's hawk (*Accipiter cooperii*), a CDFW Watch List species. All three species are known to nest in riparian habitats and have a high potential to forage and breed within the project site. White-tailed kite (*Elanus leucurus*), a CDFW Fully Protected species, has a moderate potential to occur on site. The species may use trees along the edge of the site's riparian corridor for nesting or perching, and suitable upland foraging habitat is present outside of the channel. The project site may also provide some habitat for Lawrence's goldfinch (*Spinus lawrencei*), a USFWS bird of conservation concern, which has a low potential to occur on the site.

Other non-avian special-status wildlife species with potential to occur on the project site includes south coast gartersnake (*Thamnophis sirtalis* pop. 1) and Arroyo chub (*Gila orcuttii*), both CDFW Species of Special Concern. South coast gartersnake has a high potential to occur, as the species is known from the project vicinity and suitable habitat is present on site. Arroyo chub has a moderate potential to occur. Suitable habitat for Arroyo chub is present, and the species is known from Chino Creek and the Mill Creek Wetlands.

Additionally, one non-listed rare plant species lucky morning-glory (*Calystegia felix*, CRPR 1B.1) was determined to have the potential to occur on the project site. The species was recently rediscovered in Chino after previously being considered extinct (CNPS, 2025). While only historic records exist in the immediate vicinity of the project (Prado Regional Park), limited data on the current distribution of the species and its occurrence in disturbed environments suggest the potential for its presence within the project site. As such, there is a low potential for the project site to support lucky morning-glory. No other non-listed rare plant species were determined to have at least a low potential to occur on the project.

4.4. Designated Critical Habitat

The literature review conducted prior to field surveys identified that the entirety of project site is mapped as designated critical habitat for two federally listed species: least Bell's vireo (*Vireo bellii pusillus*) and southwestern willow flycatcher (*Empidonax traillii extimus*). Mapped critical habitat is only recognized when it contains all physical and biological features essential to a listed species. While a more detailed assessment would be required to confirm this and delineate the extent of critical habitat on site, the abundance of native riparian vegetation suggests that portions of the project site likely meet the criteria.

4.5. Sensitive Natural Communities

The literature review identified nine sensitive vegetation communities recorded in the vicinity: California walnut woodland, Riversidian alluvial fan sage scrub, southern California Arroyo, southern coast live oak riparian forest, southern cottonwood willow riparian forest, southern interior cypress forest, southern riparian forest, southern riparian scrub, southern sycamore alder riparian woodland, and southern willow scrub. Several sections of the riparian/wetland habitat on the site exhibits characteristics consistent with southern willow scrub (Holland, 1986), a state-ranked S2.1 sensitive natural community. No other sensitive vegetation communities were identified on the project site.

4.6. Wildlife Corridors

The California Essential Habitat Connectivity Project was commissioned by the California Department of Transportation (Caltrans) and CDFW to create a statewide assessment of essential habitat connectivity to be used for conservation and infrastructure planning (Caltrans and CDFW 2010). One of its goals was to create the Essential Connectivity Map, which depicts large, relatively natural habitat blocks that support native biodiversity (natural landscape blocks) and areas essential for ecological connectivity between them (essential connectivity areas). This map does not reflect the needs of particular species but is based on overall biological connectivity and ecological integrity.

The Essential Connectivity Map (Caltrans and CDFW, 2010) identifies the project site as part of a natural landscape block, though it is not situated within a designated essential connectivity area or recognized wildlife corridor. This block extends from Cucamonga Creek to Prado Regional Park and Prado Basin, includes the Chino Hills and Santa Ana Mountains, and connects to Lake Mathews and the eastern Peninsular Range via essential connectivity areas. Consequently, the project site is more likely to facilitate localized wildlife movement within the landscape block and contribute to regional biodiversity by maintaining connectivity to nearby habitats, including areas designated as critical habitat for federally listed species.

5. CONCLUSION

Based on a review of available literature and the field habitat assessment surveys Aspen concludes that the 22.41-acre parcel within the City of Chino holds considerable conservation value for the County. The project site contains mapped designated critical habitat for two federally listed bird species, supports a CDFW sensitive vegetation community, is connected to surrounding natural areas and open space, and likely contributes to regional biodiversity. Additionally, the site contains suitable habitat for locally common, riparian-associated wildlife and has a moderate to high potential to support Arroyo chub, southwestern willow flycatcher, tricolored blackbird, southwestern pond turtle, Cooper's hawk, least bell's vireo, south coast gartersnake, yellow warbler, and yellow-breasted chat. Based on these findings,

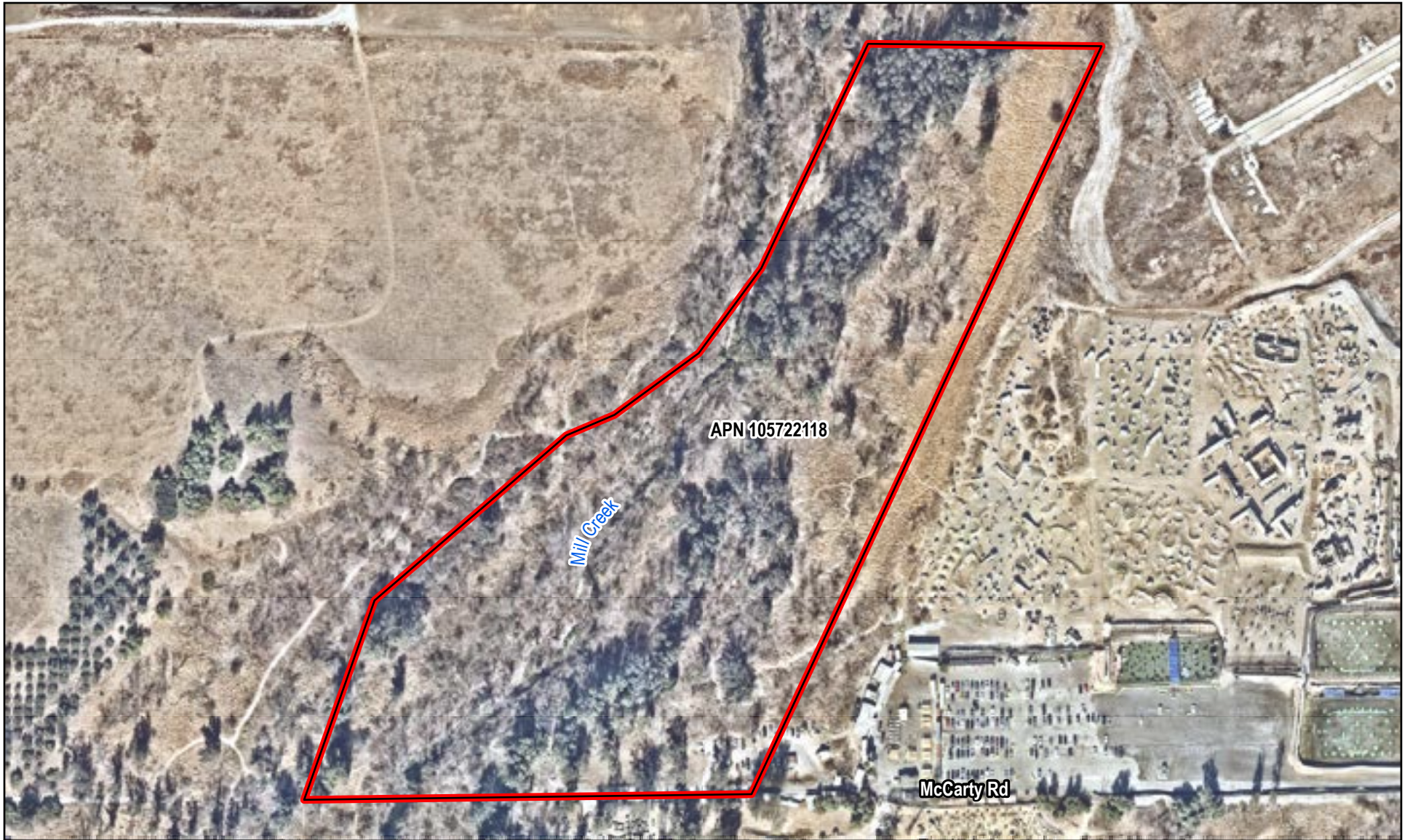
Aspen recommends that the County prioritize this property for conservation purposes, rather than for use as open space, agriculture, or development.

6. REFERENCES

- American Ornithologists' Union. 1998. Checklist of the North American Birds, 7th ed. Prepared by Committee on Classification and Nomenclature. American Ornithologists' Union, Washington DC.
- CalTrans and CDFW (California Department of Transportation and California Department of Fish and Wildlife). 2010. California Essential Habitat Connectivity Project: A Strategy for Conserving a Connected California. [Online]: <https://www.wildlife.ca.gov/Conservation/Planning/Connectivity> Accessed March 2025.
- CDFW (California Department of Fish & Wildlife). 2025a. California Natural Diversity Database (CNDDDB), Rarefind, Version 3.1.1. Heritage section, CDFW, Sacramento.
- _____. 2025b. California Natural Community List. CDFW. Sacramento. Online: <https://nrm.dfg.ca.gov/FileHandler.ashx?DocumentID=153398&inline>. Accessed March 2025.
- CNPS (California Native Plant Society). 2025. Rare Plant Inventory (online edition, v9.5.1). Online: <http://www.rareplants.cnps.org>. Accessed March 2025.
- eBird. 2025. eBird: An online database of bird distribution and abundance [web application]. eBird, Ithaca, New York. [Online]: <http://www.ebird.org>. Accessed: March 2025.
- Franzreb, K. 1989. Ecology and conservation of the endangered Least Bell's Vireo. Vol. 89. Fish and Wildlife Service, US Department of the Interior.
- Gray, M.V. and Greaves, J.M. 1984. Riparian forest as habitat for the least Bell's vireo. In: Warner, R.E. and K.M. Hendrix, eds. California Riparian Systems. University of California Press, Berkeley, CA.
- Hansen, R. and Shedd, J. 2025. California Amphibians and Reptiles. Princeton University Press, Princeton New Jersey.
- Holland, R.F. 1986. Preliminary descriptions of the terrestrial natural communities of California. State of California, The Resources Agency, Department of Fish and Game.
- iNaturalist.org. 2025. iNaturalist. [Online]: <https://www.inaturalist.org/observations> Accessed March 2025.
- Moyle, P.B. 2002. Inland Fishes of California. Berkeley, CA: University of California Press.
- Palenscar, K. 2024. Santa Ana Sucker (*Catostomus santaanae*). U.S Geological Survey, California Water Science Center. [online]: <https://www.usgs.gov/media/images/santa-ana-sucker-catostomus-santaanae-kai-palenscar>.
- Sawyer, J.O., T. Keeler-Wolf, and J.M. Evans. 2009. Manual of California Vegetation, 2nd ed. California Native Plant Society, Sacramento, California. 1300 pp.
- Stebbins, R.C. 2003. Western Reptiles and Amphibians, 3rd ed. Houghton Mifflin Company, Boston Mass.
- USACE and CDFG (United States Army Corps of Engineers and California Department of Fish and Game). 2010. Newhall Ranch Resource Management and Development Plan and Spineflower Conservation Plan Joint Environmental Impact Statement and Environmental Impact Report. SCH No. 2000011025.

- USFWS (U.S. Fish and Wildlife Service). 2010. (50 CFR Part 17) Endangered and Threatened Wildlife and Plants; Revised Critical habitat for Santa Ana Sucker; Final Rule. Federal Register 75:77962-78027 (Dec 14).
- _____. 2014. Draft Recovery Plan for the Santa Ana Sucker (*Catostomus santaanae*). U.S. Fish and Wildlife Service, Pacific Southwest Region, Sacramento, California. v + 61 pp.
- _____. 2025a. IPaC Information for Planning and Consultation. [Online]: <https://ipac.ecosphere.fws.gov/> Accessed March 2025.
- _____. 2025b. Critical habitat for Threatened & Endangered Species, Critical Habitat Mapper. [online]: <https://fws.maps.arcgis.com/home/webmap/viewer.html?webmap=9d8de5e265ad4fe09893cf75b8dbfb77>. Accessed March 2025.
- USGS (U.S. Geological Survey). 2022. Corona North, California 7.5-minute Topographic Quadrangle.
- Wilson, D.E. and S. Ruff (eds.). 1999. Smithsonian Book of North American Mammals. Smithsonian Institution Press, Washington DC.

Attachment 1 – Figures





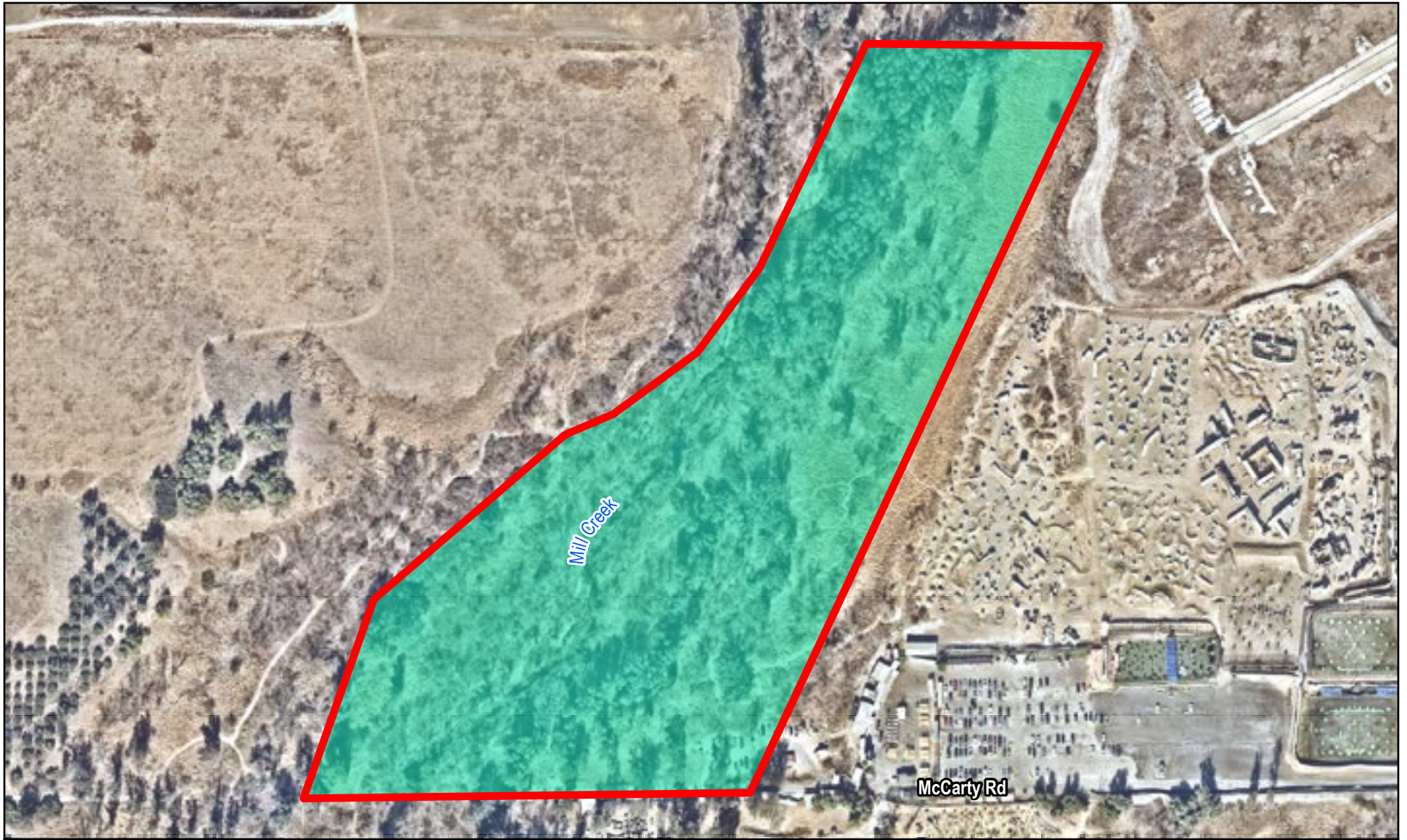
-  Assessment Area
-  Project Parcel (County of San Bernardino)

Figure 1

Habitat Assessment Area

Source: Aspen, 2025; County of San Bernardino, 2025; Nearmap, 2025.





-  Riparian/Wetland
-  Assessment Area

Figure 1

Habitat Assessment Area

Source: Aspen, 2025; County of San Bernardino, 2025; Nearmap, 2025.

Attachment 2 – California Natural Diversity Database Records



Selected Elements by Scientific Name

California Department of Fish and Wildlife

California Natural Diversity Database



Query Criteria: Quad (Corona North (3311785) OR Black Star Canyon (3311776) OR Prado Dam (3311786) OR Ontario (3411716) OR Guasti (3411715) OR Fontana (3411714) OR Riverside West (3311784) OR Lake Mathews (3311774) OR Corona South (3311775))

Species	Element Code	Federal Status	State Status	Global Rank	State Rank	Rare Plant Rank/CDFW SSC or FP
<i>Abronia villosa var. aurita</i> chaparral sand-verbena	PDNYC010P1	None	None	G5T2?	S2	1B.1
<i>Accipiter cooperii</i> Cooper's hawk	ABNKC12040	None	None	G5	S4	WL
<i>Actinemys pallida</i> southwestern pond turtle	ARAAD02032	Proposed Threatened	None	G2G3	SNR	SSC
<i>Agelaius tricolor</i> tricolored blackbird	ABPBXB0020	None	Threatened	G1G2	S2	SSC
<i>Aimophila ruficeps canescens</i> southern California rufous-crowned sparrow	ABPBX91091	None	None	G5T3	S4	WL
<i>Allium marvinii</i> Yucaipa onion	PMLIL02330	None	None	G1	S1	1B.2
<i>Allium munzii</i> Munz's onion	PMLIL022Z0	Endangered	Threatened	G1	S1	1B.1
<i>Ambrosia pumila</i> San Diego ambrosia	PDAST0C0M0	Endangered	None	G1	S1	1B.1
<i>Ammodramus savannarum</i> grasshopper sparrow	ABPBXA0020	None	None	G5	S3	SSC
<i>Anaxyrus californicus</i> arroyo toad	AAABB01230	Endangered	None	G2G3	S2	SSC
<i>Anniella stebbinsi</i> Southern California legless lizard	ARACC01060	None	None	G3	S3	SSC
<i>Antrozous pallidus</i> pallid bat	AMACC10010	None	None	G4	S3	SSC
<i>Aquila chrysaetos</i> golden eagle	ABNKC22010	None	None	G5	S3	FP
<i>Arenaria paludicola</i> marsh sandwort	PDCAR040L0	Endangered	Endangered	G1	S1	1B.1
<i>Arizona elegans occidentalis</i> California glossy snake	ARADB01017	None	None	G5T2	S2	SSC
<i>Artemisospiza belli belli</i> Bell's sparrow	ABPBX97021	None	None	G5T2T3	S3	WL
<i>Asio otus</i> long-eared owl	ABNSB13010	None	None	G5	S3?	SSC
<i>Aspidoscelis hyperythra</i> orange-throated whiptail	ARACJ02060	None	None	G5	S2S3	WL



Selected Elements by Scientific Name
California Department of Fish and Wildlife
California Natural Diversity Database



Species	Element Code	Federal Status	State Status	Global Rank	State Rank	Rare Plant Rank/CDFW SSC or FP
<i>Aspidoscelis tigris stejnegeri</i> coastal whiptail	ARACJ02143	None	None	G5T5	S3	SSC
<i>Astragalus brauntonii</i> Braunton's milk-vetch	PDFAB0F1G0	Endangered	None	G2	S2	1B.1
<i>Athene cunicularia</i> burrowing owl	ABNSB10010	None	Candidate Endangered	G4	S2	SSC
<i>Atriplex coulteri</i> Coulter's saltbush	PDCHE040E0	None	None	G3	S2	1B.2
<i>Baccharis malibuensis</i> Malibu baccharis	PDAST0W0W0	None	None	G1	S1	1B.1
<i>Berberis nevinii</i> Nevin's barberry	PDBER060A0	Endangered	Endangered	G1	S1	1B.1
<i>Bombus crotchii</i> Crotch's bumble bee	IIHYM24480	None	Candidate Endangered	G2	S2	
<i>Bombus pensylvanicus</i> American bumble bee	IIHYM24260	None	None	G3G4	S2	
<i>Branchinecta sandiegonensis</i> San Diego fairy shrimp	ICBRA03060	Endangered	None	G2	S1	
<i>Buteo swainsoni</i> Swainson's hawk	ABNKC19070	None	Threatened	G5	S4	
<i>California Walnut Woodland</i> California Walnut Woodland	CTT71210CA	None	None	G2	S2.1	
<i>Calochortus plummerae</i> Plummer's mariposa-lily	PMLIL0D150	None	None	G4	S4	4.2
<i>Calochortus weedii var. intermedius</i> intermediate mariposa-lily	PMLIL0D1J1	None	None	G3G4T3	S3	1B.2
<i>Calystegia felix</i> lucky morning-glory	PDCON040P0	None	None	G1Q	S1	1B.1
<i>Campylorhynchus brunneicapillus sandiegonensis</i> coastal cactus wren	ABPBG02095	None	None	G5T3Q	S2	SSC
<i>Catostomus santaanae</i> Santa Ana sucker	AFCJC02190	Threatened	None	G1	S1	SSC
<i>Centromadia pungens ssp. laevis</i> smooth tarplant	PDAST4R0R4	None	None	G3G4T2	S2	1B.1
<i>Ceratochrysis longimala</i> Desert cuckoo wasp	IIHYM71040	None	None	G1	S1	
<i>Chaetodipus fallax fallax</i> northwestern San Diego pocket mouse	AMAFD05031	None	None	G5T3T4	S3S4	
<i>Chloropyron maritimum ssp. maritimum</i> salt marsh bird's-beak	PDSCR0J0C2	Endangered	Endangered	G4?T1	S1	1B.2
<i>Chorizanthe parryi var. fernandina</i> San Fernando Valley spineflower	PDPGN040J1	None	Endangered	G3T1	S1	1B.1



Selected Elements by Scientific Name
California Department of Fish and Wildlife
California Natural Diversity Database



Species	Element Code	Federal Status	State Status	Global Rank	State Rank	Rare Plant Rank/CDFW SSC or FP
<i>Chorizanthe parryi</i> var. <i>parryi</i> Parry's spineflower	PDPGN040J2	None	None	G3T2	S2	1B.1
<i>Chorizanthe polygonoides</i> var. <i>longispina</i> long-spined spineflower	PDPGN040K1	None	None	G5T3	S3	1B.2
<i>Cicindela tranquebarica viridissima</i> greenest tiger beetle	IICOL02201	None	None	G5T1	S1	
<i>Cladium californicum</i> California saw-grass	PMCYP04010	None	None	G4	S2	2B.2
<i>Coccyzus americanus occidentalis</i> western yellow-billed cuckoo	ABNRB02022	Threatened	Endangered	G5T2T3	S1	
<i>Coleonyx variegatus abbotti</i> San Diego banded gecko	ARACD01031	None	None	G5T5	S1S2	SSC
<i>Coturnicops noveboracensis</i> yellow rail	ABNME01010	None	None	G4	S2	SSC
<i>Crotalus ruber</i> red-diamond rattlesnake	ARADE02090	None	None	G4	S3	SSC
<i>Diplectrona californica</i> California diplectronan caddisfly	IITRI23010	None	None	G1G2	S1	
<i>Dipodomys merriami parvus</i> San Bernardino kangaroo rat	AMAFD03143	Endangered	Endangered	G5T1	S1	SSC
<i>Dipodomys stephensi</i> Stephens' kangaroo rat	AMAFD03100	Threatened	Threatened	G2	S3	
<i>Dodecahema leptoceras</i> slender-horned spineflower	PDPGN0V010	Endangered	Endangered	G1	S1	1B.1
<i>Dudleya multicaulis</i> many-stemmed dudleya	PDCRA040H0	None	None	G2	S2	1B.2
<i>Elanus leucurus</i> white-tailed kite	ABNKC06010	None	None	G5	S3S4	FP
<i>Empidonax traillii extimus</i> southwestern willow flycatcher	ABPAE33043	Endangered	Endangered	G5T2	S3	
<i>Eremophila alpestris actia</i> California horned lark	ABPAT02011	None	None	G5T4Q	S4	WL
<i>Eriastrum densifolium</i> ssp. <i>sanctorum</i> Santa Ana River woollystar	PDPLM03035	Endangered	Endangered	G4T1	S1	1B.1
<i>Eugnosta busckana</i> Busck's gallmoth	IILEM2X090	None	None	G1G3	S2S3	
<i>Eumops perotis californicus</i> western mastiff bat	AMACD02011	None	None	G4G5T4	S3S4	SSC
<i>Euphydryas editha quino</i> quino checkerspot butterfly	IILEPK405L	Endangered	None	G4G5T1T2	S1S2	
<i>Gila orcuttii</i> arroyo chub	AFCJB13120	None	None	G1	S2	SSC



Selected Elements by Scientific Name
California Department of Fish and Wildlife
California Natural Diversity Database



Species	Element Code	Federal Status	State Status	Global Rank	State Rank	Rare Plant Rank/CDFW SSC or FP
<i>Gonidea angulata</i> western ridged mussel	IMBIV19010	None	None	G3	S2	
<i>Haliaeetus leucocephalus</i> bald eagle	ABNKC10010	Delisted	Endangered	G5	S3	FP
<i>Harpagonella palmeri</i> Palmer's grapplinghook	PDBOR0H010	None	None	G4	S3	4.2
<i>Hesperocyparis forbesii</i> Tecate cypress	PGCUP040C0	None	None	G2	S2	1B.1
<i>Horkelia cuneata var. puberula</i> mesa horkelia	PDROS0W045	None	None	G4T1	S1	1B.1
<i>Icteria virens</i> yellow-breasted chat	ABPBX24010	None	None	G5	S4	SSC
<i>Lasiurus xanthinus</i> western yellow bat	AMACC05070	None	None	G4G5	S3	SSC
<i>Lasthenia glabrata ssp. coulteri</i> Coulter's goldfields	PDAST5L0A1	None	None	G4T2	S2	1B.1
<i>Laterallus jamaicensis coturniculus</i> California black rail	ABNME03041	None	Threatened	G3T1	S2	FP
<i>Lepechinia cardiophylla</i> heart-leaved pitcher sage	PDLAM0V020	None	None	G3	S2S3	1B.2
<i>Lepidium virginicum var. robinsonii</i> Robinson's pepper-grass	PDBRA1M114	None	None	G5T3	S3	4.3
<i>Lepus californicus bennettii</i> San Diego black-tailed jackrabbit	AMAEB03051	None	None	G5T3T4	S3S4	
<i>Lycium parishii</i> Parish's desert-thorn	PDSOL0G0D0	None	None	G4	S1	2B.3
<i>Malacothamnus parishii</i> Parish's bushmallow	PDMAL0Q0C0	None	None	GXQ	SX	1A
<i>Monardella australis ssp. jokerstii</i> Jokerst's monardella	PDLAM18112	None	None	G4T1?	S1?	1B.1
<i>Monardella hypoleuca ssp. intermedia</i> intermediate monardella	PDLAM180A4	None	None	G4T2?	S2?	1B.3
<i>Monardella pringlei</i> Pringle's monardella	PDLAM180J0	None	None	GX	SX	1A
<i>Muhlenbergia californica</i> California muhly	PMPOA480A0	None	None	G4	S4	4.3
<i>Muhlenbergia utilis</i> aparejo grass	PMPOA481X0	None	None	G4	S2S3	2B.2
<i>Myotis yumanensis</i> Yuma myotis	AMACC01020	None	None	G5	S4	
<i>Nama stenocarpa</i> mud nama	PDHYD0A0H0	None	None	G4G5	S1S2	2B.2



Selected Elements by Scientific Name
California Department of Fish and Wildlife
California Natural Diversity Database



Species	Element Code	Federal Status	State Status	Global Rank	State Rank	Rare Plant Rank/CDFW SSC or FP
<i>Navarretia prostrata</i> prostrate vernal pool navarretia	PDPLM0C0Q0	None	None	G2	S2	1B.2
<i>Neolarra alba</i> white cuckoo bee	IIHYM81010	None	None	GH	SH	
<i>Neotoma lepida intermedia</i> San Diego desert woodrat	AMAFF08041	None	None	G5T3T4	S3S4	SSC
<i>Nolina cismontana</i> chaparral nolina	PMAGA080E0	None	None	G3	S3	1B.2
<i>Nyctinomops femorosaccus</i> pocketed free-tailed bat	AMACD04010	None	None	G5	S3	SSC
<i>Nyctinomops macrotis</i> big free-tailed bat	AMACD04020	None	None	G5	S3	SSC
<i>Oncorhynchus mykiss irideus pop. 10</i> steelhead - southern California DPS	AFCHA0209J	Endangered	Candidate Endangered	G5T1Q	S1	
<i>Pandion haliaetus</i> osprey	ABNKC01010	None	None	G5	S4	WL
<i>Penstemon californicus</i> California beardtongue	PDSCR1L110	None	None	G3	S2	1B.2
<i>Pentachaeta aurea ssp. allenii</i> Allen's pentachaeta	PDAST6X021	None	None	G4T1	S1	1B.1
<i>Perognathus longimembris brevinasus</i> Los Angeles pocket mouse	AMAFD01041	None	None	G5T2	S1S2	SSC
<i>Phacelia keckii</i> Santiago Peak phacelia	PDHYD0C4G1	None	None	G1	S1	1B.3
<i>Phacelia stellaris</i> Brand's star phacelia	PDHYD0C510	None	None	G1	S1	1B.1
<i>Phrynosoma blainvillii</i> coast horned lizard	ARACF12100	None	None	G4	S4	SSC
<i>Polioptila californica californica</i> coastal California gnatcatcher	ABPBJ08081	Threatened	None	G4G5T3Q	S2	SSC
<i>Pseudognaphalium leucocephalum</i> white rabbit-tobacco	PDAST440C0	None	None	G4	S2	2B.2
<i>Rhaphiomidas terminatus abdominalis</i> Delhi Sands flower-loving fly	IIDIP05021	Endangered	None	G1T1	S1	
<i>Rhinichthys gabrielino</i> Santa Ana speckled dace	AFCJB3705K	Proposed Threatened	None	G5T1	S1	SSC
<i>Riversidian Alluvial Fan Sage Scrub</i> Riversidian Alluvial Fan Sage Scrub	CTT32720CA	None	None	G1	S1.1	
<i>Salvadora hexalepis virgultea</i> coast patch-nosed snake	ARADB30033	None	None	G5T4	S3	SSC
<i>Senecio aphanactis</i> chaparral ragwort	PDAST8H060	None	None	G3	S2	2B.2



Selected Elements by Scientific Name
California Department of Fish and Wildlife
California Natural Diversity Database



Species	Element Code	Federal Status	State Status	Global Rank	State Rank	Rare Plant Rank/CDFW SSC or FP
<i>Setophaga petechia</i> yellow warbler	ABPBX03010	None	None	G5	S3	SSC
<i>Sidalcea neomexicana</i> salt spring checkerbloom	PDMAL110J0	None	None	G4	S2	2B.2
<i>Southern California Arroyo Chub/Santa Ana Sucker Stream</i> Southern California Arroyo Chub/Santa Ana Sucker Stream	CARE2330CA	None	None	GNR	SNR	
<i>Southern Coast Live Oak Riparian Forest</i> Southern Coast Live Oak Riparian Forest	CTT61310CA	None	None	G4	S4	
<i>Southern Cottonwood Willow Riparian Forest</i> Southern Cottonwood Willow Riparian Forest	CTT61330CA	None	None	G3	S3.2	
<i>Southern Interior Cypress Forest</i> Southern Interior Cypress Forest	CTT83230CA	None	None	G2	S2.1	
<i>Southern Riparian Forest</i> Southern Riparian Forest	CTT61300CA	None	None	G4	S4	
<i>Southern Riparian Scrub</i> Southern Riparian Scrub	CTT63300CA	None	None	G3	S3.2	
<i>Southern Sycamore Alder Riparian Woodland</i> Southern Sycamore Alder Riparian Woodland	CTT62400CA	None	None	G4	S4	
<i>Southern Willow Scrub</i> Southern Willow Scrub	CTT63320CA	None	None	G3	S2.1	
<i>Spea hammondi</i> western spadefoot	AAABF02020	Proposed Threatened	None	G2G3	S3S4	SSC
<i>Sphenopholis obtusata</i> prairie wedge grass	PMPOA5T030	None	None	G5	S2	2B.2
<i>Spinus lawrencei</i> Lawrence's goldfinch	ABPBY06100	None	None	G3G4	S4	
<i>Symphotrichum defoliatum</i> San Bernardino aster	PDASTE80C0	None	None	G2	S2	1B.2
<i>Taricha torosa</i> Coast Range newt	AAAAF02032	None	None	G4	S4	SSC
<i>Thamnophis hammondi</i> two-striped gartersnake	ARADB36160	None	None	G4	S3S4	SSC
<i>Thamnophis sirtalis pop. 1</i> south coast gartersnake	ARADB3613F	None	None	G5T1T2	S1S2	SSC
<i>Thysanocarpus rigidus</i> rigid fringepod	PDBRA2Q070	None	None	G2	S2	1B.2
<i>Vireo bellii pusillus</i> least Bell's vireo	ABPBW01114	Endangered	Endangered	G5T2	S3	

Record Count: 121

Attachment 3 – Observed Species List

Attachment 3. Observed Species List

Latin Name	Common Name
VASCULAR PLANTS	
Dicotyledons	
ADOXACEAE	MUSKROOT FAMILY
<i>Sambucus nigra</i> ssp. <i>cerulea</i> (<i>S. mexicana</i>)	Mexican elderberry, blue elderberry
AMARANTHACEAE	AMARANTH FAMILY
<i>Amaranthus palmeri</i>	Palmer's amaranth
APIACEAE	CELERY FAMILY
* <i>Apium graveolens</i>	Wild celery
* <i>Conium maculatum</i>	Poison hemlock
* <i>Foeniculum vulgare</i>	Fennel
ASTERACEAE	ASTER FAMILY
<i>Artemisia californica</i>	California sagebrush
<i>Artemisia douglasiana</i>	Douglas mugwort
<i>Baccharis salicifolia</i> (<i>B. glutinosa</i>)	Mule fat
* <i>Carduus pycnocephalus</i> ssp. <i>pycnocephalus</i>	Italian thistle
<i>Cirsium vulgare</i>	Bull thistle
<i>Ericameria palmeri</i> var. <i>pachylepis</i> (<i>Haplopappus palmeri</i> ssp. <i>pachylepis</i>)	Thickbracted goldenbush, grassland goldenbush
* <i>Erigeron bonariensis</i> (<i>Conyza bonariensis</i>)	Flax-leaved horseweed
<i>Helianthus annuus</i>	Western sunflower
* <i>Helminthotheca echioides</i> (<i>Picris echioides</i>)	Bristly ox-tongue
<i>Heterotheca grandiflora</i>	Telegraph weed
* <i>Lactuca serriola</i>	Prickly lettuce
* <i>Silybum marianum</i>	Milk thistle
* <i>Sonchus oleraceus</i>	Common sow thistle
* <i>Verbesina encelioides</i> ssp. <i>exauriculata</i>	Golden crownbeard
BORAGINACEAE	BORAGE OR WATERLEAF FAMILY
<i>Amsinckia intermedia</i>	Large flower rancher's fiddleneck
<i>Amsinckia menziesii</i>	Common fiddleneck, rancher's fiddleneck
BRASSICACEAE	MUSTARD FAMILY
* <i>Brassica nigra</i>	Black mustard
* <i>Hirschfeldia incana</i> (<i>Brassica geniculata</i>)	Shortpod mustard
* <i>Sisymbrium irio</i>	London rocket
CUCURBITACEAE	GOURD FAMILY, CUCUMBER FAMILY
<i>Marah macrocarpa</i>	Chilicothe, wild cucumber
EUPHORBIACEAE	SPURGE FAMILY
* <i>Ricinus communis</i>	Castor bean
FABACEAE	LEGUME FAMILY, PEA FAMILY
* <i>Robinia pseudoacacia</i>	Black locust
GERANIACEAE	GERANIUM FAMILY
* <i>Erodium cicutarium</i>	Redstem filaree
LAMIACEAE	MINT FAMILY
* <i>Marrubium vulgare</i>	Horehound
MALVACEAE	MALLOW FAMILY
* <i>Malva parviflora</i>	Cheeseweed

Attachment 3. Observed Species List

Latin Name	Common Name
MYRTACEAE	MYRTLE FAMILY, EUCALYPTUS FAMILY
* <i>Eucalyptus sp.</i>	Ornamental eucalyptus
* <i>Eucalyptus camaldulensis</i>	Red gum, red river gum
OLEACEAE	OLIVE FAMILY
* <i>Fraxinus udhei</i>	Shamel ash
ONAGRACEAE	EVENING-PRIMROSE FAMILY
<i>Epilobium ciliatum</i>	Willow-herb
PLANTAGINACEAE	PLANTAIN FAMILY
* <i>Plantago major</i>	Common plantain
RUBIACEAE	MADDER FAMILY, COFFEE FAMILY
*? <i>Galium aparine</i>	Goose grass, stickywilly
SALICACEAE	WILLOW FAMILY
<i>Salix gooddingii</i>	Goodding's black willow
<i>Salix lasiolepis</i>	Arroyo willow
SOLANACEAE	NIGHTSHADE FAMILY
<i>Datura wrightii (D. meteloides)</i>	Jimsonweed, tolguacha
* <i>Nicotiana glauca</i>	Tree tobacco
URTICACEAE	NETTLE FAMILY
<i>Urtica dioica ssp. holosericea</i>	Stinging nettle
* <i>Urtica urens</i>	Dwarf nettle
Monocotyledons	
ARECACEAE	PALM FAMILY
* <i>Phoenix canariensis</i>	Canary Island palm
* <i>Washingtonia robusta</i>	Mexican fan palm, ornamental fan palm
POACEAE	GRASS FAMILY
* <i>Arundo donax</i>	Giant reed
* <i>Bromus diandrus (B. rigidus)</i>	Rippgut brome
* <i>Festuca arundinacea</i>	Tall fescue
* <i>Hordeum marinum ssp. gussoneanum (H. geniculatum)</i>	Mediterranean barley
* <i>Poa annua</i>	Annual blue grass
* <i>Stipa miliacea var. miliacea (Piptatherum miliaceum, Oryzopsis milacea)</i>	Smilo grass
INVERTEBRATE ANIMALS	
INSECTA	INSECTS
LEPIDOPTERA	BUTTERFLIES AND MOTHS
<i>Papilio rutulus</i>	Western tiger swallowtail
VERTEBRATE ANIMALS	
AVES	BIRDS
ANATIDAE	DUCKS, GEESE AND SWANS
<i>Anas platyrhynchos</i>	Mallard
CATHARTIDAE	VULTURES
<i>Cathartes aura</i>	Turkey vulture
ACCIPITRIDAE	HAWKS, EAGLES, HARRIERS
<i>Buteo lineatus</i>	Red-shouldered hawk

Attachment 3. Observed Species List

Latin Name	Common Name
<i>Buteo jamaicensis</i>	Red-tailed hawk
COLUMBIDAE	PIGEONS AND DOVES
<i>Zenaida macroura</i>	
TROCHILIDAE	HUMMINGBIRDS
<i>Calypte anna</i>	<i>Calypte anna</i>
PICIDAE	WOODPECKERS
<i>Picoides pubescens</i>	Downy woodpecker
TYRANNIDAE	TYRANT FLYCATCHERS
<i>Sayornis nigricans</i>	Black phoebe
<i>Sayornis saya</i>	Say's phoebe
CORVIDAE	CROWS AND JAYS
<i>Corvus corax</i>	Common raven
TROGLODYTIDAE	WRENS
<i>Thryomanes bewickii</i>	Bewick's wren
<i>Troglodytes aedon</i>	House wren
<i>Cistothorus palustris</i>	Marsh wren
MIMIDAE	MOCKINGBIRDS AND THRASHERS
<i>Mimus polyglottos</i>	<i>Mimus polyglottos</i>
STURNIDAE	STARLINGS
* <i>Sturnus vulgaris</i>	European starling
EMBERIZIDAE	SPARROWS, WARBLERS, TANAGERS
<i>Setophaga coronata</i>	Yellow-rumped warbler
<i>Geothlypis trichas</i>	Common yellowthroat
<i>Melospiza melodia</i>	Song sparrow
<i>Zonotrichia leucophrys</i>	White-crowned sparrow
FRINGILLIDAE	FINCHES
<i>Haemorhous mexicanus</i>	House finch
<i>Spinus psaltria</i>	Lesser goldfinch
PASSERIDAE	WEAVERS
* <i>Passer domesticus</i>	House sparrow
ANATIDAE	DUCKS, GEESE AND SWANS
<i>Branta canadensis</i>	Canada goose
<i>Anas platyrhynchos</i>	Mallard
CATHARTIDAE	VULTURES
<i>Cathartes aura</i>	Turkey vulture
ACCIPITRIDAE	HAWKS, EAGLES, HARRIERS
<i>Buteo jamaicensis</i>	Red-tailed hawk
FALCONIDAE	FALCONS
<i>Falco sparverius</i>	American kestrel
CHARADRIIDAE	PLOVERS
<i>Charadrius vociferus</i>	Killdeer
COLUMBIDAE	PIGEONS AND DOVES
<i>Columba livia</i>	Rock pigeon
TROCHILIDAE	HUMMINGBIRDS
<i>Calypte anna</i>	Anna's hummingbird

Attachment 3. Observed Species List

Latin Name	Common Name
<i>Sayornis nigricans</i>	Black phoebe
<i>Sayornis saya</i>	Say's phoebe
ALAUDIDAE	LARKS
<i>Eremophila alpestris</i>	Horned lark
HIRUNDINIDAE	SWALLOWS
<i>Tachycineta thalassina</i>	Violet-green swallow
<i>Hirundo rustica</i>	Barn swallow
CORVIDAE	CROWS AND JAYS
<i>Corvus corax</i>	Common raven
MIMIDAE	MOCKINGBIRDS AND THRASHERS
<i>Mimus polyglottos</i>	Northern mockingbird
STURNIDAE	STARLINGS
* <i>Sturnus vulgaris</i>	European starling
EMBERIZIDAE	SPARROWS, WARBLERS, TANAGERS
<i>Setophaga coronata</i>	Yellow-rumped warbler
<i>Melospiza melodia</i>	Song sparrow
<i>Euphagus cyanocephalus</i>	Brewer's blackbird
<i>Molothrus ater</i>	Brown-headed cowbird
FRINGILLIDAE	FINCHES
<i>Haemorhous mexicanus</i>	House finch
<i>Spinus psaltria</i>	Lesser goldfinch
MAMMALIA	MAMMALS
LEPORIDAE	HARES AND RABBITS
<i>Sylvilagus audubonii</i>	Desert cottontail
SCIURIDAE	SQUIRRELS
<i>Otospermophilus beecheyi</i>	Beechey (California) ground squirrel
REPTILIA	REPTILES
IGUANIDAE	IGUANID LIZARDS
<i>Sceloporus occidentalis</i>	Western fence lizard
<i>Uta stansburiana</i>	Side-blotched lizard

Note:

Species introduced to California are indicated by an asterisk. This list includes only species observed on the site. Other species may have been overlooked or unidentifiable due to season (amphibians are active during rains, reptiles during summer, some birds (and bats) migrate out of the area for summer or winter, some mammals hibernate, many plants are identifiable only in spring). Plants were identified using keys, descriptions, and illustrations in Baldwin et al (2012). Plant taxonomy and nomenclature generally follow Baldwin et al. (2012). Wildlife taxonomy and nomenclature generally follow Stebbins (2003) for amphibians and reptiles, AOU (1998) for birds, and Wilson and Ruff (1999) for mammals.

Attachment 4 – Photo Exhibit



Photo 1: View of typical habitat in the project site.



Photo 2: View of active channel in western portion of site.



Photo 3: Wetted side channel branching off from main flows.



Photo 4: Densely vegetated side channel.



Photo 5: Evidence of high flow events outside of active channel.



Photo 6: Typical density of vegetation in area dominated by willows and mulefat.



Photo 7: Typical composition of shrub vegetation layer on the site



Photo 8: Representative view of native canopy throughout the site.



Photo 9: Perennial pepperweed in the understory vegetation layer.



Photo 10: View of transition between eucalyptus and willow dominated patches.



Photo 11: Representative view of eucalyptus dominated canopy on site.



Photo 12: Typical understory composition beneath eucalyptus trees.