

Addendum No. 1

August 20, 2019

Page 1 of 2

**ADDENDUM NO. 1
CRAFTON AVENUE AND OTHER STREETS PROJECTS
WORK ORDER: H14860
AREA: MENTONE**

BIDS OPEN 10:00 AM, TUESDAY, AUGUST 27, 2019

By Email via ePro System or Facsimile and Regular Mail with Telephone Confirmation (Paper Plan Holders)

Amend the Special Provisions as follows:

1. **Bid Proposal Package (Loose Insert), replace the following pages:**

Replace page P-3 through P-8 with attached Addendum 1, P-3 through P-8. **These pages shall be used for bidding purposes.**

Amend the Plans as follows:

2. Replace Sheet No. 7 with **Sheet No. 7A.**
3. Sheet 5, typical section for Crafton Avenue STA 102+05.35 RT TO STA 106+86.77 LT and STA 102+10.50 TO STA 106+86.77 LT, **delete note "H" from the "Structural Section Detail" and the "Structural Section Detail Notes".**
4. Additional detail for **Remove and Replace Section** (Separate 8.5x11 sheet)

The following question(s) have been received by bidders:

5. **Q1.** On Sheet 15 of 28 at Station 67+00 there is a note 38 which looks like there is a 5' Cold Planed header Cut. The sections on sheet 3 show the entire street getting Cold Planed and the AC to taper down at the edges. This note 38 is not shown on sheet 14 which also has the entire section to be cold planed. Exactly what does note 38 refer to?

A1. Note 38 is a note for cold plane existing AC pavement and is used in various locations to indicate the need for cold planning. Note 38 is shown on sheet 15, Crafton from Sta 66+77.72 Lt. to 67+29.83 Lt., to indicate a line between two points that will be cold planed. The entire area from Sta 66+77.72 Lt. to 68+36.54 Lt. is paved and it is not obvious where the cold planning limits are. The 5' min is the width that the pavement is tapered as indicated in various locations on the sheet. Note 38 is also shown sheet 20 of 28. On sheet 20, Colton Avenue from Sta 169+24.72 to 169+54.72 and Sta 170+48.52 to 170+88.52, note 38 is calling out the need for additional cold planning to create a header cut not shown in the typical section. The Cold plane in the roadway is typically handled with note 19 and is described by the Structural Sections and Structural Section Details. Sheet 14 uses note 19 to indicate cold planning the entire width of the roadway.

Addendum No. 1

CRAFTON AVENUE AND OTHER STREETS PROJECTS

August 20, 2019

Page 2 of 2

The addition of these requirements shall be considered in concert with existing documents in preparation of bids. **THE BIDDER'S CERTIFICATION FOR THIS ADDENDUM NO. 1 SHALL BE SIGNED BY THE SAME PERSON WHO SIGNS THE PROPOSAL AND SHALL BE SUBMITTED WITH THE PROPOSAL. ANY proposal not accompanied by a signed BIDDER'S CERTIFICATION (below) acknowledging receipt of this Addendum No. 1 will NOT be accepted.**

KEVIN BLAKESLEE, Director

Department of Public Works

By:



MOHAMMAD ALI, P.E., Chief

Contracts Division

MA:LW:mb

Attachments: Modified Sheet 7A; Modified Remove & Replace Detail - Sheet 8; Addendum No. 1 Bid Sheet (P-3 thru P-8)

BIDDER'S CERTIFICATION

By my signature hereunder, I acknowledge receipt of Addendum No. 1 and I fully understand the intent and detail of Addendum No. 1, which I have considered in my preparation of the attached proposal.

Bidder's Signature

Date

Note: The page containing the executed BIDDER'S CERTIFICATION (just this page), must be included with the proposal.

Bidder: _____

Project: **CRAFTON AVENUE AND OTHER ROADS**

W.O.#: **H14860**

Limits: **Various Locations**

Item No.	Approx. Quant.	Meas. Unit	Item Description	Unit Price	Total
ALL LOCATIONS					
1	50,000	F.A.	Supplemental Work (Unforeseen Utility Conflicts)	\$ 1.00	\$ 50,000.00
2	50,000	F.A.	Supplemental Work (Unforeseen Differing Site Conditions and Subgrade Stabilization)	\$ 1.00	\$ 50,000.00
3	1	L.S.	Prepare Final Storm Water Pollution Prevention Plan	\$	\$
4	1	L.S.	Water Pollution Control Work	\$	\$
5	1	L.S.	Mobilization	\$	\$
6	1	L.S.	Traffic Control System	\$	\$
7	1	L.S.	Finishing Roadway	\$	\$
Location Subtotal:					
CRAFTON AVENUE - 5th Avenue to Anzio Avenue					
8	5	EA.	Remove Roadside Sign	\$	\$
9	4,000	L.F.	Remove Traffic Stripe	\$	\$
10	1,850	L.F.	Remove Asphalt Concrete Dike	\$	\$
11	729	S.Y.	Remove Asphalt Concrete Surfacing	\$	\$
12	4	EA.	Reset Roadside Sign	\$	\$
13	31	EA.	Remove Object Marker / Delineator	\$	\$
14	4	EA.	Adjust Manhole Frame and Cover To Grade	\$	\$
15	44,500	S.Y.	Cold Plane Asphalt Concrete Pavement	\$	\$
16	300	S.Y.	Remove Concrete (Ramp, Sidewalk, Spandrel & Cross Gutter)	\$	\$
17	66	L.F.	Remove Concrete (Curb and Gutter)	\$	\$
18	155	L.F.	Remove Concrete (Partial Curb and Gutter)	\$	\$
19	1	L.S.	Clearing and Grubbing	\$	\$
20	1	L.S.	Develop Water Supply	\$	\$
21	4,000	C.Y.	Roadway Excavation	\$	\$
22	2	STA.	Shoulder Backing	\$	\$
23	2,800	C.Y.	Aggreagate Base (Class 2)	\$	\$
24	33	S.Y.	Pavement Reinforcing Fabric	\$	\$
25	3,200	S.Y.	Asphaltic Emulsion (Fog Seal Coat)	\$	\$
26	3,850	TON	Asphalt Concrete (3/4" Type A)	\$	\$
27	114	TON	Asphalt Concrete (3/8" Type A)	\$	\$
28	480	TON	Asphalt Concrete Leveling Course (#4 Type A)	\$	\$

Bidder: _____

Project: **CRAFTON AVENUE AND OTHER ROADS**

W.O.#: **H14860**

Limits: **Various Locations**

Item No.	Approx. Quant.	Meas. Unit	Item Description	Unit Price	Total
29	7,000	TON	Rubberized Asphalt Concrete (3/4" Type G-Asphalt Rubber)	\$	\$
30	61	TON	Rubberized Asphalt Concrete (1/2" Type G-Asphalt Rubber)	\$	\$
31	1,800	L.F.	Place Asphalt Concrete Dike (8")	\$	\$
32	24	L.F.	Place Asphalt Concrete Dike (Traversable)	\$	\$
33	206	S.Y.	Place Asphalt Concrete (Driveway, Walkways & Miscellaneous Area)	\$	\$
34	31,500	S.Y.	Asphalt-Rubber Binder Seal Coat	\$	\$
35	18,500	GAL.	Asphalt-Rubber Binder	\$	\$
36	4,000	S.Y.	2% Cement Treated Subbase (0.35' depth)	\$	\$
37	14,000	S.Y.	6% Cement Treated Subbase (0.95' depth)	\$	\$
38	6,200	GAL.	Curing Seal (Prime Coat)	\$	\$
39	14	S.Y.	Turf (Sod) Planting	\$	\$
40	7	EA.	Roadside Sign (Metal Post)	\$	\$
41	132	S.F.	Curb Ramp Detectable Warning Surface	\$	\$
42	1	C.Y.	Minor Concrete (Curb Type A1-8)	\$	\$
43	9	C.Y.	Minor Concrete (Curb and Gutter)	\$	\$
44	6	C.Y.	Minor Concrete (Partial Curb and Gutter)	\$	\$
45	16	C.Y.	Minor Concrete (Curb, Spandrel & Cross Gutter)	\$	\$
46	28	C.Y.	Minor Concrete ("v" Ditch Drain)	\$	\$
47	5	C.Y.	Minor Concrete (Sidewalk)	\$	\$
48	29	C.Y.	Minor Concrete (Pedestrian Ramp)	\$	\$
49	4	EA.	Portable Changeable Message Sign (PCMS)	\$	\$
50	61	EA.	Type F Channelizer - (Surface Mounted)	\$	\$
51	33	EA.	Object Marker (Type L-1(CA)OM2-2V)	\$	\$
52	9,900	L.F.	Paint Double Yellow Traffic Stripe (2-Coat)	\$	\$
53	17,800	L.F.	Paint 4" Traffic Stripe (2-Coat)	\$	\$
54	1,400	L.F.	Paint 8" Traffic Stripe (2-Coat)	\$	\$
55	4,000	S.F.	Paint Pavement Marking (2-Coat) Letters and Arrows, Limit Lines, Crosswalks and Crosswalk with Ladder Pattern	\$	\$
56	860	EA.	Pavement Marker (Retroreflective Type D, G)	\$	\$
57	10	EA.	Pavement Marker (Reflective Blue)	\$	\$
58	3	EA.	No. 5 Pull Box	\$	\$
59	13	EA.	Inductive Loop Detector	\$	\$

Bidder: _____

Project: **CRAFTON AVENUE AND OTHER ROADS**

W.O.#: **H14860**

Limits: **Various Locations**

Item No.	Approx. Quant.	Meas. Unit	Item Description	Unit Price	Total
60	1	L.S.	Signal and Lighting	\$	\$
Location Subtotal:					
NICE AVENUE - 160' East of Jasper to Amethyst Avenue					
61	7,150	L.F.	Remove Asphalt Concrete Dike	\$	\$
62	275	S.Y.	Remove Asphalt Concrete Surfacing	\$	\$
63	5	EA.	Reset Roadside Sign	\$	\$
64	31,500	S.Y.	Cold Plane Asphalt Concrete Pavement	\$	\$
65	200	S.Y.	Remove Concrete (Ramp & Sidewalk)	\$	\$
66	18	L.F.	Remove Concrete (Curb and Gutter)	\$	\$
67	190	L.F.	Remove Concrete (Partial Curb and Gutter)	\$	\$
68	1	L.S.	Clearing and Grubbing	\$	\$
69	6	EA.	Remove Trees	\$	\$
70	480	C.Y.	Roadway Excavation	\$	\$
71	35	STA.	Shoulder Backing	\$	\$
72	125	TON	Asphalt Concrete (3/4" Type A)	\$	\$
73	290	TON	Asphalt Concrete (3/8" Type A)	\$	\$
74	630	TON	Asphalt Concrete Leveling Course (#4 Type A)	\$	\$
75	4,100	TON	Rubberized Asphalt Concrete (1/2" Type G-Asphalt Rubber)	\$	\$
76	7,200	L.F.	Place Asphalt Concrete Dike (8")	\$	\$
77	37,500	S.Y.	Asphalt-Rubber Binder Seal Coat	\$	\$
78	24,500	GAL.	Asphalt-Rubber Binder	\$	\$
79	14	S.Y.	Turf (Sod) Planting	\$	\$
80	72	S.F.	Curb Ramp Detectable Warning Surface	\$	\$
81	19	C.Y.	Minor Concrete (Curb and Gutter)	\$	\$
82	8	C.Y.	Minor Concrete (Partial Curb and Gutter)	\$	\$
83	23	C.Y.	Minor Concrete (Pedestrian Ramp)	\$	\$
84	3	EA.	Object Marker (Type L-1(CA)OM2-2V)	\$	\$
85	2,804	L.F.	Paint Double Yellow Traffic Stripe (2-Coat)	\$	\$
86	1,494	L.F.	Paint 4" Traffic Stripe (2-Coat)	\$	\$
87	1,200	S.F.	Paint Pavement Marking (2-Coat) Letters and Arrows, Limit Lines, Crosswalks and Crosswalk with Ladder Pattern	\$	\$
88	9	EA.	Pavement Marker (Reflective Blue)	\$	\$
Location Subtotal:					

Bidder: _____

Project: **CRAFTON AVENUE AND OTHER ROADS**

W.O.#: **H14860**

Limits: **Various Locations**

Item No.	Approx. Quant.	Meas. Unit	Item Description	Unit Price	Total
<i>BERYL AVENUE - Colton Avenue to Nice Avenue</i>					
89	54	S.F.	Remove Pavement Marking	\$	\$
90	5	EA.	Adjust Manhole Frame and Cover To Grade	\$	\$
91	1,400	S.Y.	Cold Plane Asphalt Concrete Pavement	\$	\$
92	91	S.Y.	Remove Concrete (Ramp, Sidewalk, Spandrel & Cross Gutter)	\$	\$
93	63	L.F.	Remove Concrete (Partial Curb and Gutter)	\$	\$
94	405	TON	Rubberized Asphalt Concrete (1/2" Type G-Asphalt Rubber)	\$	\$
95	24	S.F.	Curb Ramp Detectable Warning Surface	\$	\$
96	3	C.Y.	Minor Concrete (Partial Curb and Gutter)	\$	\$
97	11	C.Y.	Minor Concrete (Pedestrian Ramp)	\$	\$
98	165	S.F.	Paint Pavment Marking (2-Coat) Letters and Arrows, Limit Lines, Crosswalks and Crosswalk with Ladder Pattern	\$	\$
99	2	EA.	Pavement Marker (Reflective Blue)	\$	\$
<i>Location Subtotal:</i>					
<i>BERYL AVENUE - Nice Avenue to 150'+/- North</i>					
100	445	S.Y.	Remove Asphalt Concrete Surfacing	\$	\$
101	6	EA.	Reset Mailbox	\$	\$
102	13	S.Y.	Cold Plane Asphalt Concrete Pavement	\$	\$
103	1	EA.	Remove Tree Stump	\$	\$
104	1	L.S.	Clearing and Grubbing	\$	\$
105	145	C.Y.	Roadway Excavation	\$	\$
106	43	TON	Asphalt Concrete (3/4" Type A)	\$	\$
107	23	TON	Asphalt Concrete (3/8" Type A)	\$	\$
108	43	TON	Rubberized Asphalt Concrete (1/2" Type G-Asphalt Rubber)	\$	\$
109	105	L.F.	Place Asphalt Concrete Dike (Traversable)	\$	\$
110	14	C.Y.	Minor Concrete (Curb, Spandrel & Cross Gutter)	\$	\$
<i>Location Subtotal:</i>					
<i>TOURMALINE AVENUE - Southern End to Capri Avenue</i>					
111	8	S.Y.	Remove Asphalt Concrete Surfacing	\$	\$
112	28	S.Y.	Remove Concrete (Ramp, Sidewalk, Spandrel & Cross Gutter)	\$	\$
113	32	L.F.	Remove Concrete (Curb and Gutter)	\$	\$
114	1	C.Y.	Roadway Excavation	\$	\$

Bidder: _____

Project: **CRAFTON AVENUE AND OTHER ROADS**

W.O.#: **H14860**

Limits: **Various Locations**

Item No.	Approx. Quant.	Meas. Unit	Item Description	Unit Price	Total
115	8,600	S.Y.	Slurry Seal - Type II	\$	\$
116	8,600	S.Y.	Asphaltic Emulsion (Fog Seal Coat)	\$	\$
117	2	TON	Asphalt Concrete (3/4" Type A)	\$	\$
118	145	TON	Asphalt Concrete Leveling Course (#4 Type A)	\$	\$
119	2	TON	Rubberized Asphalt Concrete (1/2" Type G-Asphalt Rubber)	\$	\$
120	8,600	S.Y.	Asphalt-Rubber Binder Seal Coat	\$	\$
121	5,500	GAL.	Asphalt-Rubber Binder	\$	\$
122	12	S.F.	Curb Ramp Detectable Warning Surface	\$	\$
123	2	C.Y.	Minor Concrete (Curb and Gutter)	\$	\$
124	2	C.Y.	Minor Concrete (Sidewalk)	\$	\$
125	84	C.Y.	Minor Concrete (Pedestrian Ramp)	\$	\$
126	126	S.F.	Paint Pavement Marking (2-Coat) Letters and Arrows, Limit Lines, Crosswalks and Crosswalk with Ladder Pattern	\$	\$
127	5	EA.	Pavement Marker (Reflective Blue)	\$	\$
Location Subtotal:					
COLTON AVENUE - Sta 169+24.72 to Sta 170+88.52					
128	150	L.F.	Remove Traffic Stripe	\$	\$
129	65	L.F.	Remove Asphalt Concrete Dike	\$	\$
130	1	EA.	Adjust Manhole Frame and Cover To Grade	\$	\$
131	590	S.Y.	Cold Plane Asphalt Concrete Pavement	\$	\$
132	3	TON	Asphalt Concrete (3/8" Type A)	\$	\$
133	155	TON	Rubberized Asphalt Concrete 3/4" Type G-Asphalt Rubber)	\$	\$
134	65	L.F.	Place Asphalt Concrete Dike (8")	\$	\$
135	690	GAL.	Asphalt-Rubber Binder	\$	\$
136	1,050	S.Y.	Asphalt-Rubber Binder Seal Coat	\$	\$
137	100	L.F.	Paint Double Yellow Traffic Stripe (2-Coat)	\$	\$
138	100	L.F.	Paint 4" Traffic Stripe (2-Coat)	\$	\$
139	100	L.F.	Paint 8" Traffic Stripe (2-Coat)	\$	\$
140	215	S.F.	Paint Pavement Marking (2-Coat) Letters and Arrows, Limit Lines, Crosswalks and Crosswalk with Ladder Pattern	\$	\$
141	16	EA.	Pavement Marker (Retroreflective Type D, G)	\$	\$
Location Subtotal:					

Bidder: _____

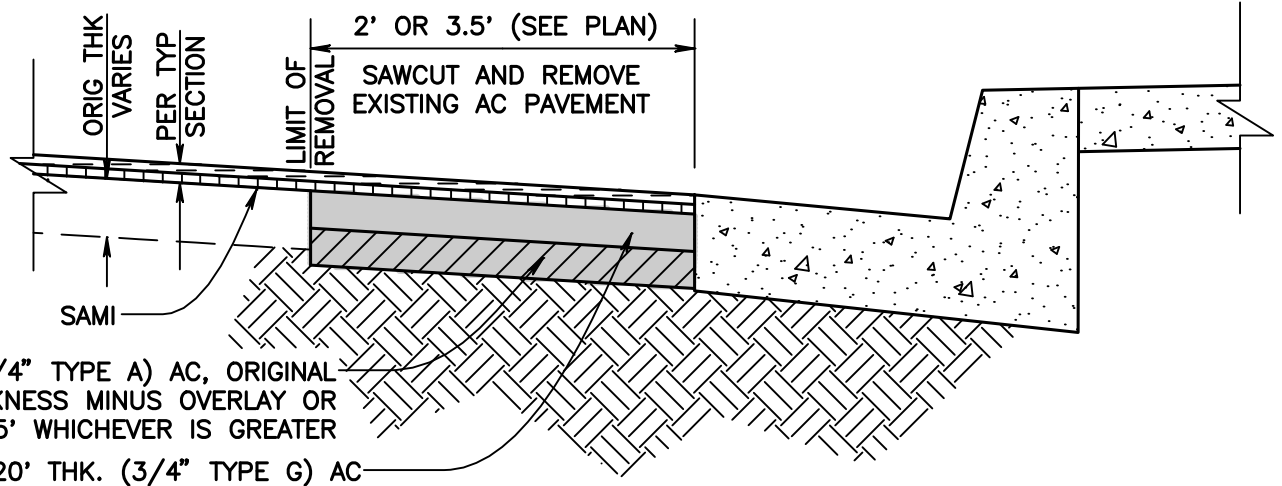
Project: **CRAFTON AVENUE AND OTHER ROADS**

W.O.#: **H14860**

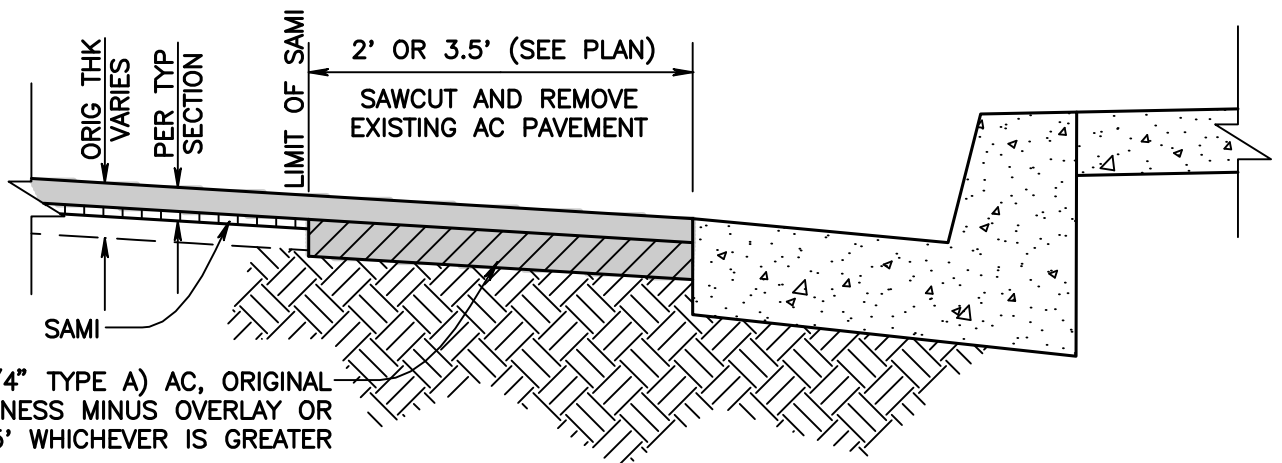
Limits: **Various Locations**

Item No.	Approx. Quant.	Meas. Unit	Item Description	Unit Price	Total
-------------	-------------------	---------------	------------------	------------	-------

PROJECT TOTAL: \$



WITH SLURRY TYPE II

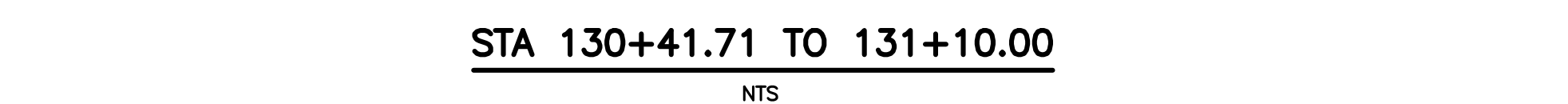
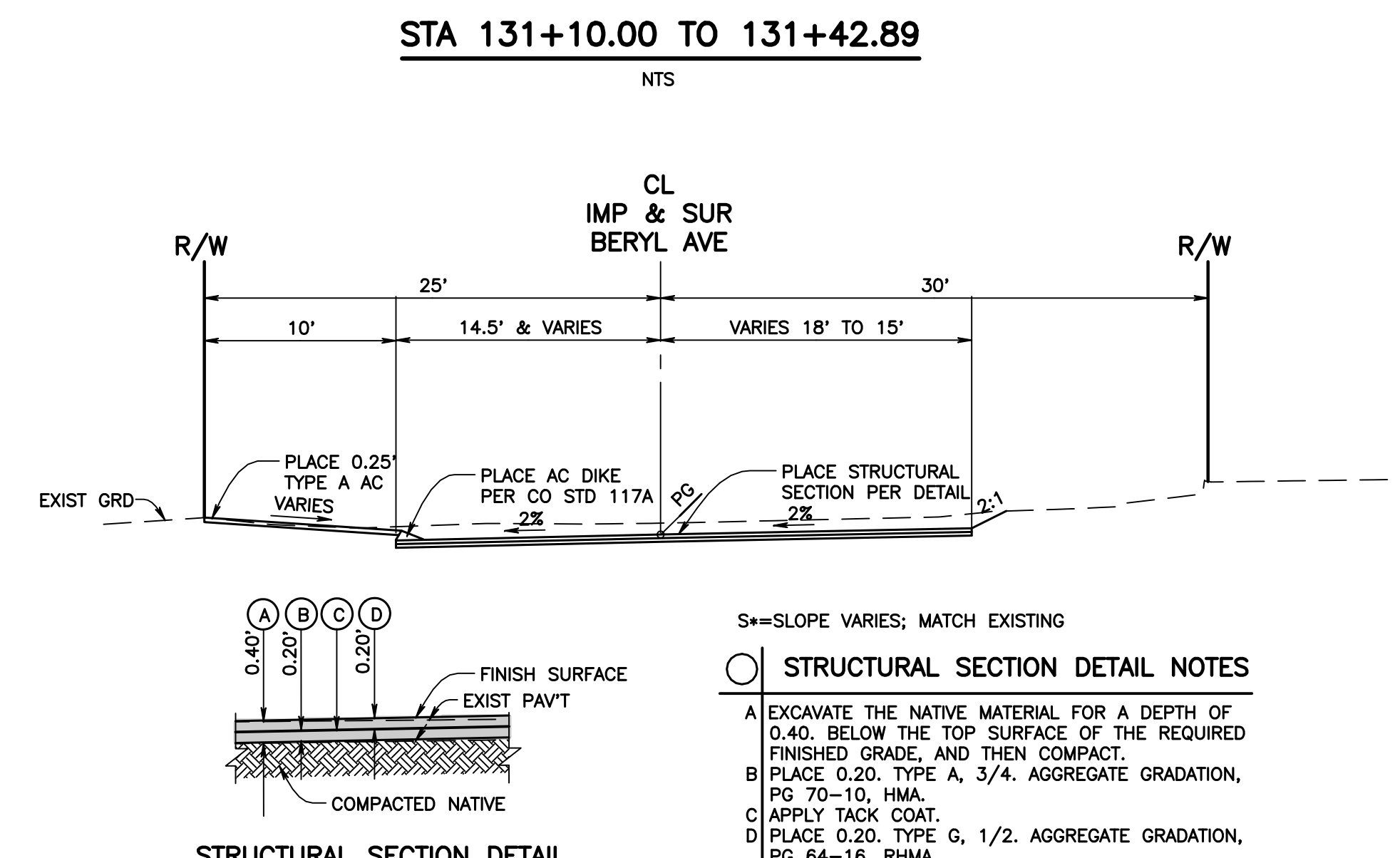
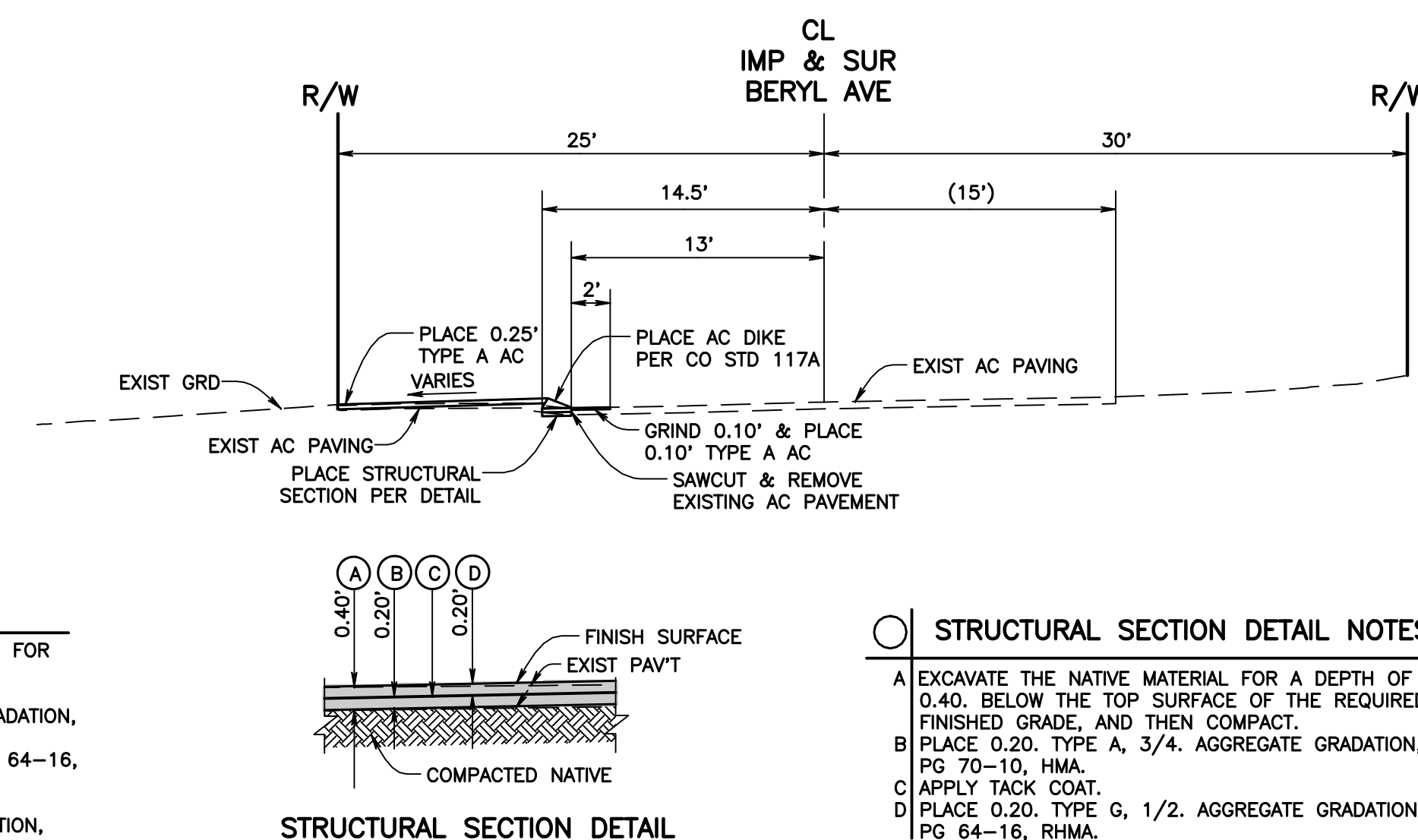


WITH OVERLAY

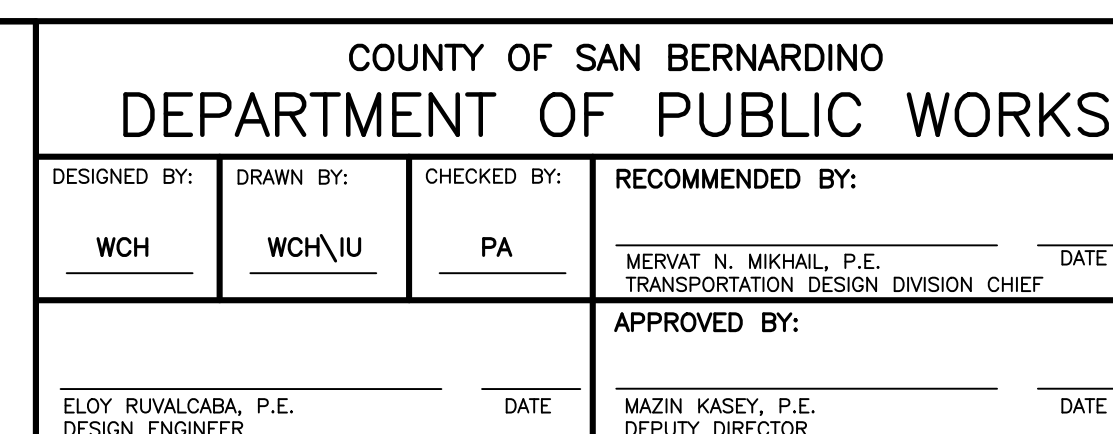
REMOVE AND REPLACE SECTION DETAIL

NTS

ADDENDUM #1
REPLACE DETAIL ON SHEET 8



MARK	REVISIONS	APPR.	DATE

[illegible]

J.L. REF.	W.O. NO.	SCALE	SHT. NO.	TOT. SHT'S
JL 11497	H14860	AS SHOWN	7A	28