



**SECTION G**

**CONTRACT DRAWINGS**

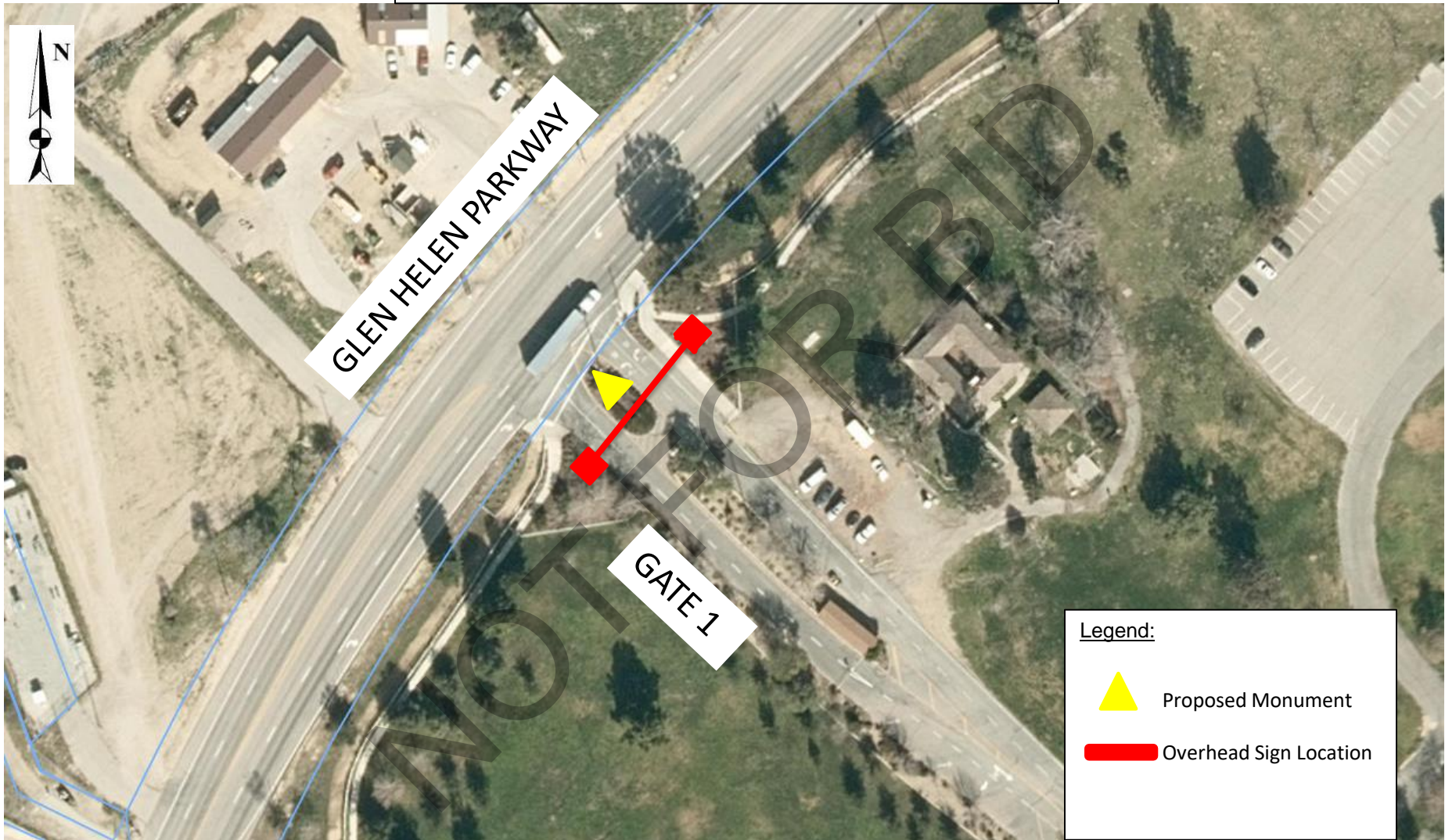
**GLEN HELEN REGIONAL  
PARK MONUMENT PROJECT**

**FOR**

**GLEN HELEN REGIONAL PARK  
SAN BERNARDINO, CALIFORNIA**

**PROJECT NO.'s: 1012115**

# Glen Helen Regional Park Entrance



## Legend:



Proposed Monument



Overhead Sign Location

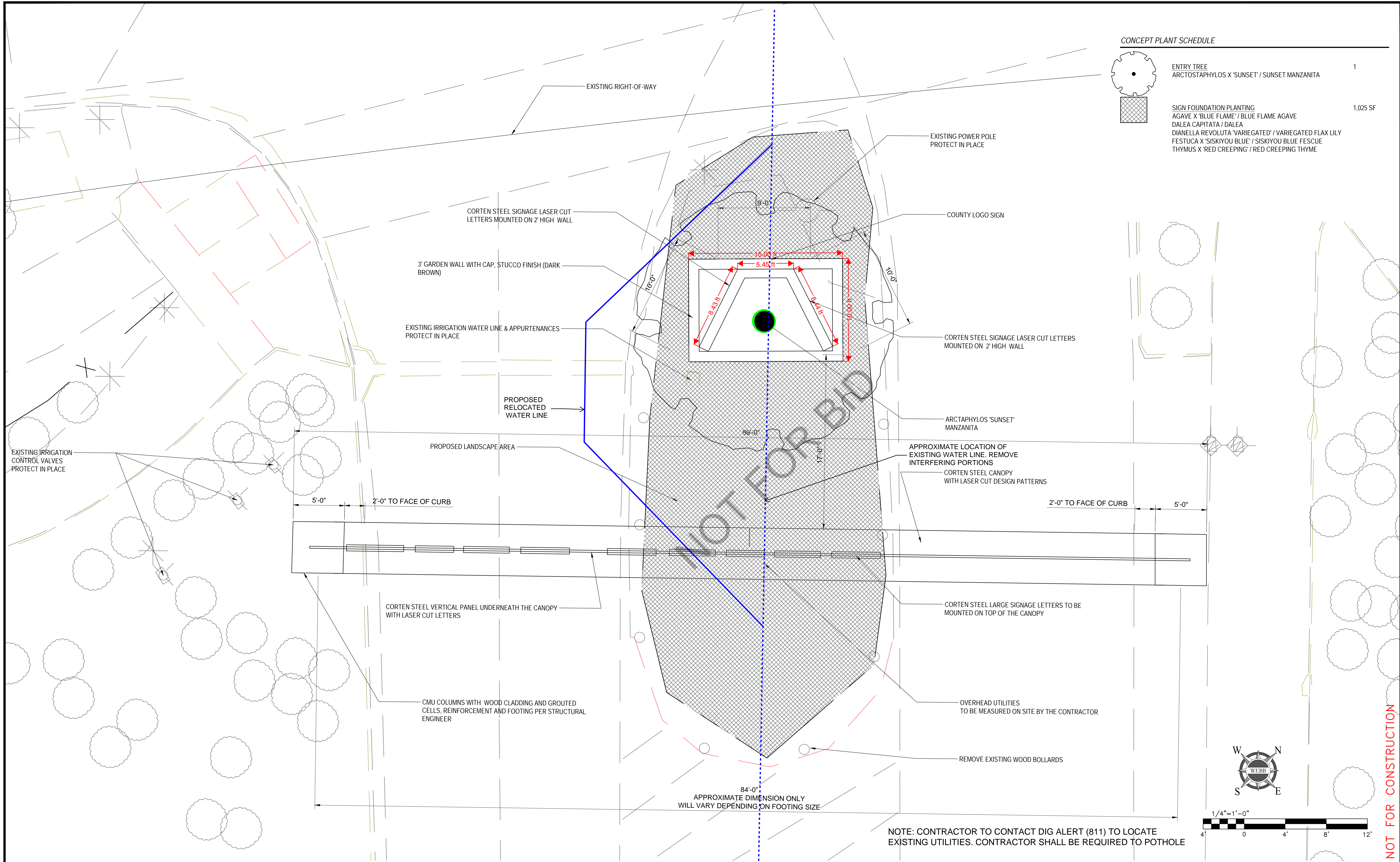
SAN BERNARDINO COUNTY  
DEPARTMENT OF PUBLIC WORKS  
**YARD XX**  
**DISTRICT XX**  
**PROJECT NO. 1012115**

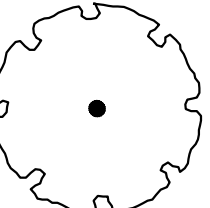
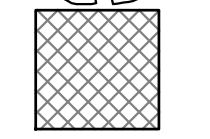


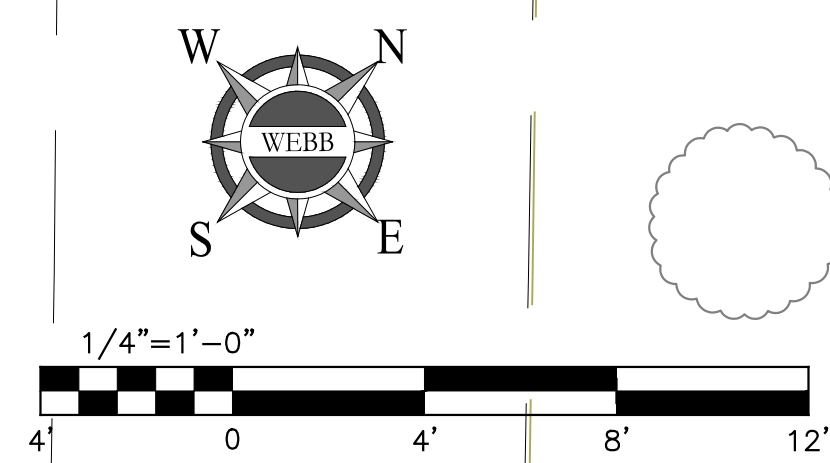
## LOCATION MAP

**Glen Helen Monument Project**  
**Glen Helen Regional Park**

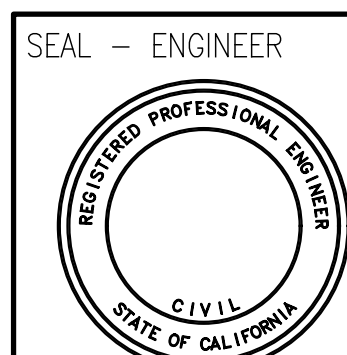




CONCEPT PLANT SCHEDULE		
	ENTRY TREE ARCTOSTAPHYLOS X 'SUNSET' / SUNSET MANZANITA	1
	SIGN FOUNDATION PLANTING AGAVE X 'BLUE FLAME' / BLUE FLAME AGAVE DALEA CAPITATA / DALEA DIANELLA REVOLUTA 'VARIEGATED' / VARIEGATED FLAX LILY FESTUCA X 'SISKIYOU BLUE' / SISKIYOU BLUE FESCUE THYMUS X 'RED CREEPING' / RED CREEPING THYME	1,025 SF



NOTE: CONTRACTOR TO CONTACT DIG ALERT (811) TO LOCATE EXISTING UTILITIES. CONTRACTOR SHALL BE REQUIRED TO POTHOLE



BENCHMARK:  
BENCHMARK

**ALBERT A. WEBB ASSOCIATES**

ENGINEERING CONSULTANTS  
3788 McCRA Y STREET  
RIVERSIDE CA. 92506  
PH. (951) 686-1070  
FAX (951) 788-1256

PLANS PREPARED UNDER THE SUPERVISION OF:  
**DRAFT**  
PROJECT ENGINEER

####  
R.C.E. NO.

MARK	REVISIONS	APPR	DATE

COUNTY OF SAN BERNARDINO CSA 70 BL SPECIAL DISTRICTS DEPARTMENT			
DESIGNED BY XX	DRAWN BY RK	CHECKED BY JH	APPROVED BY:
SUBMITTED BY		C.D.E.	SPECIAL DISTRICTS DEPARTMENT
RECOMMENDED APPROVED BY:			DISTRICT ENGINEER
SPECIAL DISTRICTS DEPARTMENT		DATE	DATE

GLEN HELEN REGIONAL PARK	W.O. NO.: 23-0030
GATE 1 CONCEPT PLAN	ROAD NO.: ####
23-0030-L-SP RK - 1	FILE NO. XX
	SHEET -- OF 2

NOT FOR CONSTRUCTION





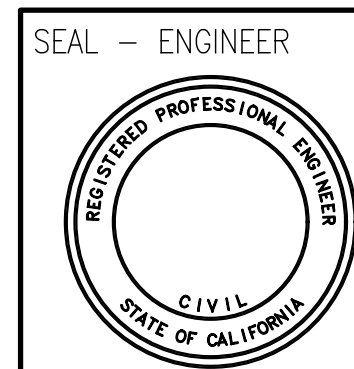
A large, rusted metal sculpture of the letters 'MIUS' is mounted on a stone wall. The letters are made of a thick, weathered metal, possibly corten steel, which has a reddish-brown patina. The 'M' and 'I' are tall and narrow, while the 'U' is shorter and wider. The 'S' is the largest letter, with a thick, curved body. The sculpture is set against a background of a rough, grey stone wall. The lighting is bright, casting shadows on the wall.

A large, dense, rounded shrub with green foliage and reddish-brown branches, identified as a Red Twig Dogwood, in a garden setting.

Architectural rendering of the Glen Helen sign structure. The main sign is 89' wide and 16' high. It features a large 'GLEN HELEN' sign in a rusted metal finish, with 'REGIONAL PARK • AMPHITHEATER • WATER PARK' below it. The sign is mounted on a wooden frame. Dimensions and callouts are as follows:

- Overall Dimensions:** 89' wide, 16' high.
- Clearance:** 16' MIN CLEARANCE (left side), 8' MIN CLEARANCE FROM THE POWERLINE (right side).
- Callouts:**
  - A:** Points to the top of the sign structure.
  - B:** Points to the base of the sign structure.
  - C:** Points to the text 'REGIONAL PARK • AMPHITHEATER • WATER PARK'.
  - D:** Points to the 'GLEN HELEN' text.
- Base Details:** The base includes a tree, a sign for 'Glen Helen GATE 1', and the San Bernardino County Regional Parks logo.

ALBERT A.  
**WEBB**  
ASSOCIATES



**ALBERT A.  
WEBB  
ASSOCIATES**

MARK	REVISIONS	APPR	DATE

APPROVED BY:	
SPECIAL DISTRICTS DEPARTMENT	DATE
DISTRICT ENGINEER	DATE

V.O. NO.:  
23-0030

LOAD NO.:  
####

FILE NO.  
XX

SHEET -- OF 2

NOT FOR CONSTRUCTION

H:\2023\23-0030\DRAWINGS\PLAN SHEETS\23-0030-L-SP RK.DWG 3/7/2023 2:20:32 PM Rehak





Regional Parks

# GLEN HELEN REGIONAL PARK ENTRANCE MONUMENT PROPOSAL

REVISED DESIGN  
02.15.22

# GLEN HELEN

REGIONAL PARK • AMPHITHEATER • WATER PARK

