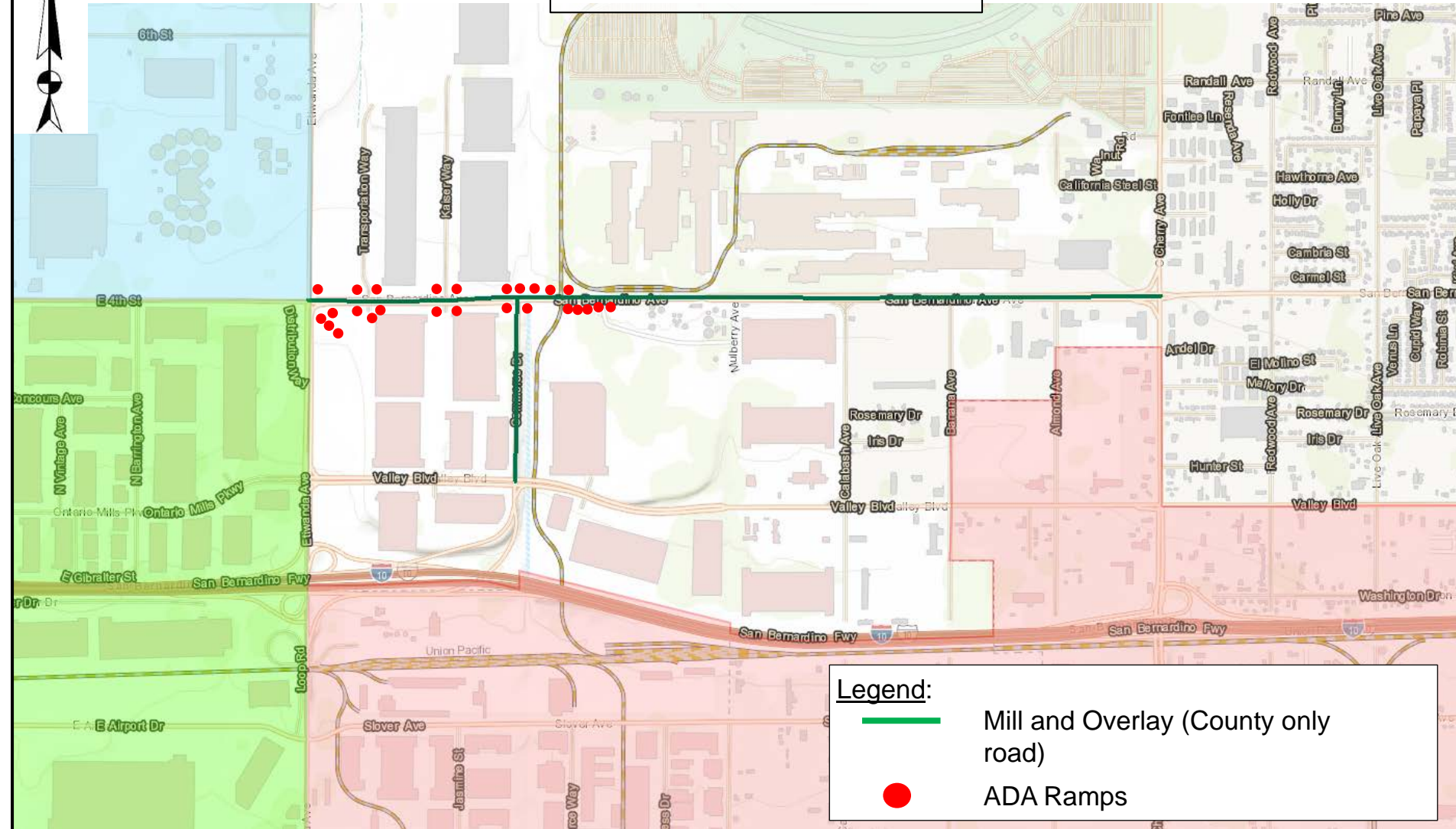


Fontana Area



Legend:



Mill and Overlay (County only road)



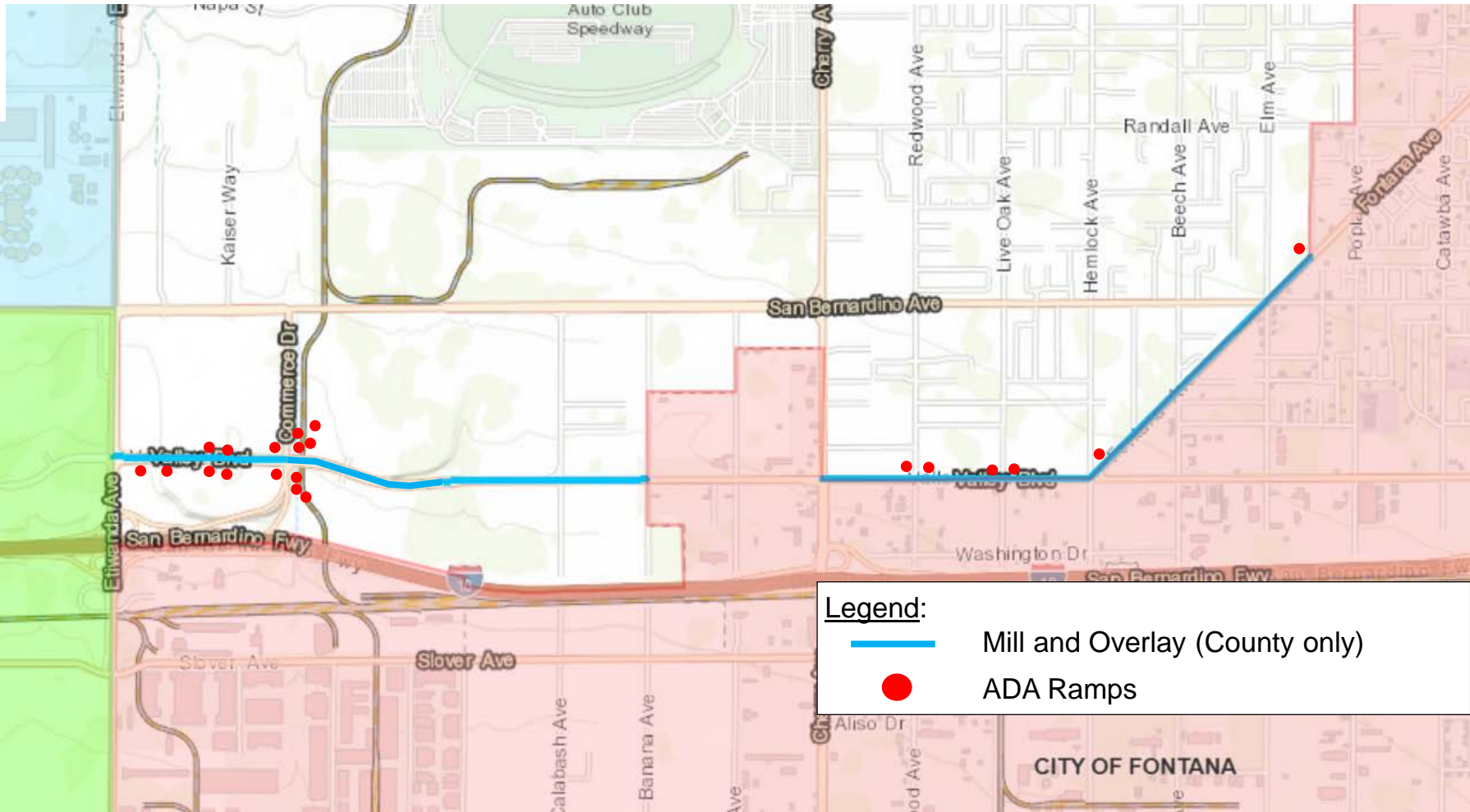
ADA Ramps

COUNTY OF SAN BERNARDINO
DEPARTMENT OF PUBLIC WORKS
YARD 3
DISTRICT 2
WORK ORDER #:H15063



LOCATION MAP
SAN BERNARDINO AVENUE AND COMMERCE DRIVE
Various Roads / Locations
Mill and Overlay, ADA Ramps Update

Fontana Area



Legend:



Mill and Overlay (County only)



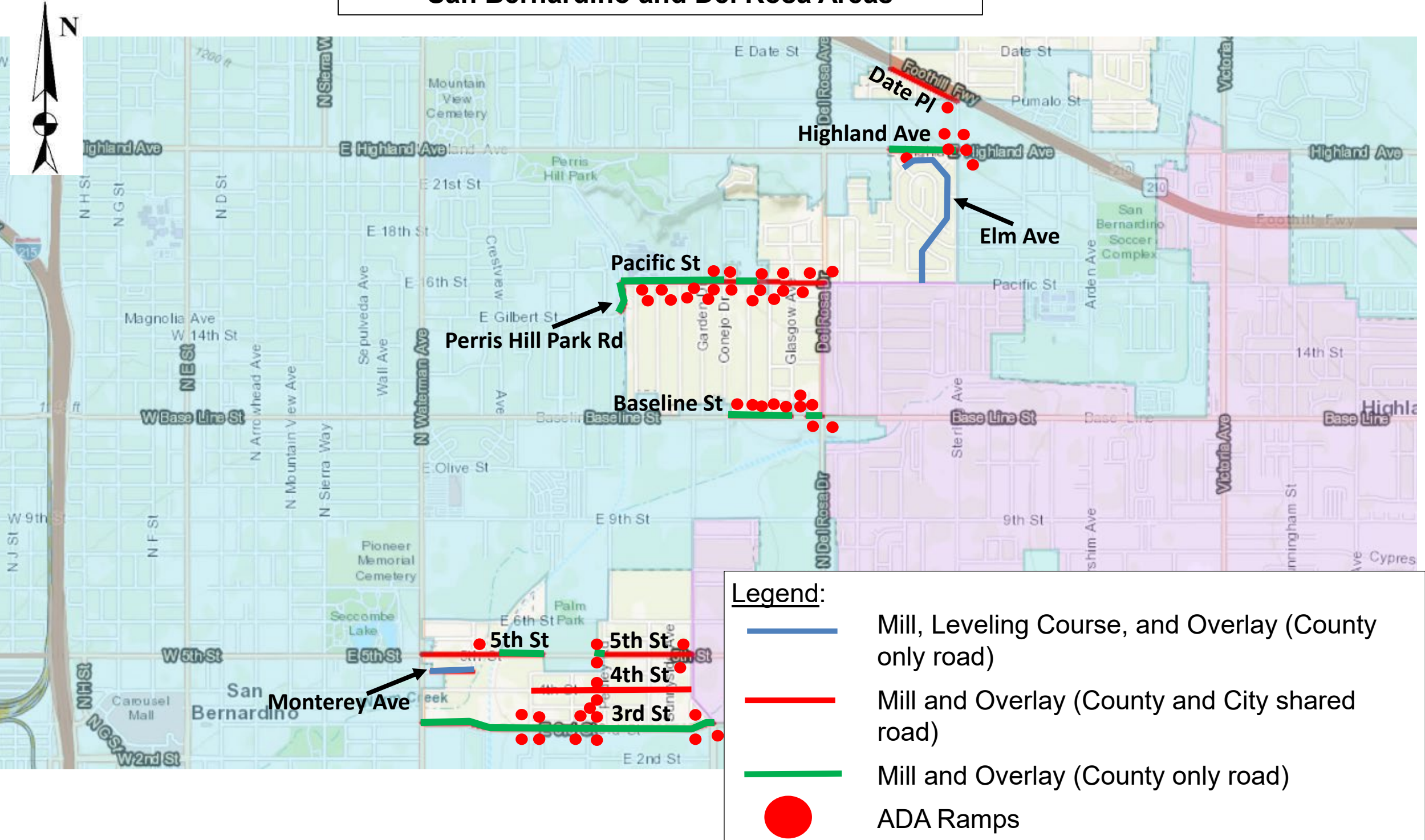
ADA Ramps

COUNTY OF SAN BERNARDINO
DEPARTMENT OF PUBLIC WORKS
YARD 3
DISTRICT 2
WORK ORDER #:H15064



LOCATION MAP
FONTANA AVENUE AND VALLEY BOULEVARD
Various Roads / Locations
Mill and Overlay, ADA Ramps Update

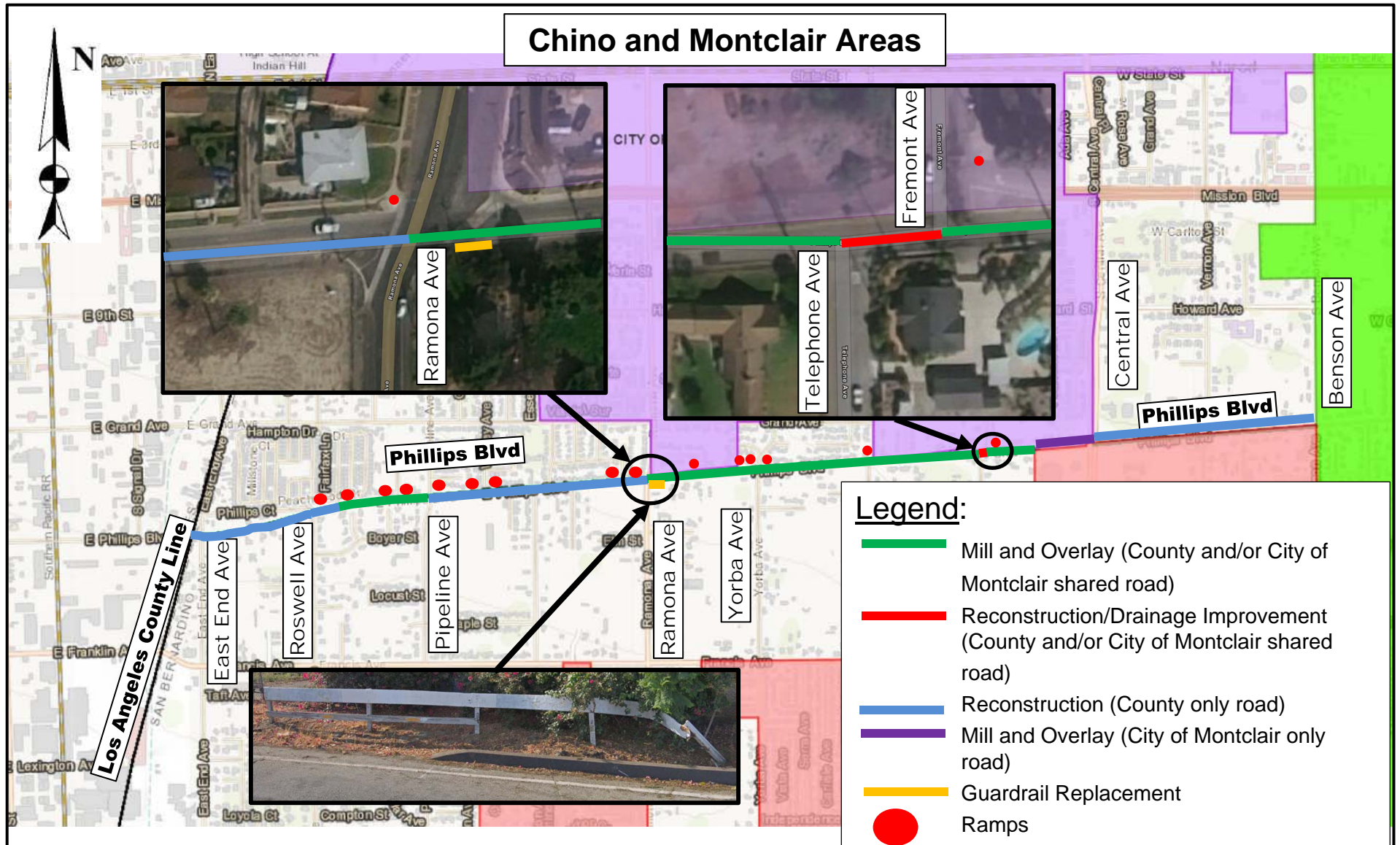
San Bernardino and Del Rosa Areas



COUNTY OF SAN BERNARDINO
DEPARTMENT OF PUBLIC WORKS
YARD 5
DISTRICTS 3, 5
WORK ORDER #:H15068



LOCATION MAP
THIRD STREET AND OTHER ROADS
Various Roads / Locations
Mill, Leveling Course, and Overlay, ADA Ramps Update



COUNTY OF SAN BERNARDINO
DEPARTMENT OF PUBLIC WORKS
YARD 1
DISTRICT 4
WO H15072



LOCATION MAP
PHILLIPS BOULEVARD
Los Angeles County Line East to Benson Ave
Reconstruction, Mill and Overlay, ADA Ramps Update,
Guardrail Replacement, and Drainage Improvement

Chino and Montclair Areas

This map displays the proposed road improvements and ADA ramps for the Chino and Montclair areas. The map includes a north arrow in the top left corner. The legend identifies the following:

- Slurry Seal Type 3 (County Only Road): Represented by a thick brown line.
- Mill, Scrub Seal, and Overlay (County Only Road): Represented by a thick red line.
- Mill and Overlay (County Only Road): Represented by a thick blue line.
- Mill and Overlay (County and/or City Shared Road): Represented by a thick green line.
- ADA Ramps: Represented by red dots.

The map shows the following roads and features:

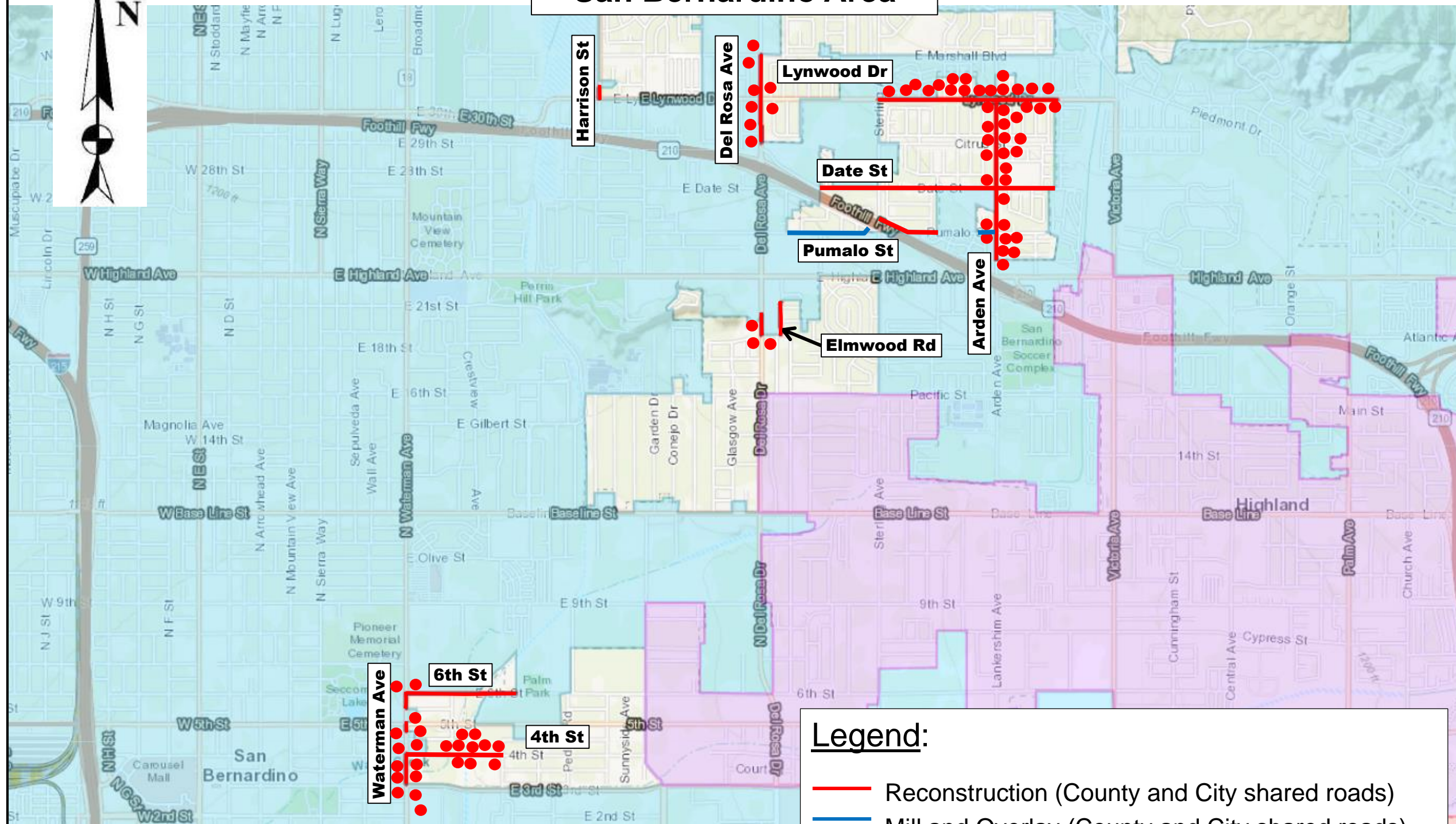
- Major Roads:** E Mission Blvd, E Phillips Blvd, E Franklin Ave, E Olive St, E Grand Ave, E 9th St, E 10th St, E 11th St, E 12th St, E 13th St, E 14th St, E 15th St, E 16th St, E 17th St, E 18th St, E 19th St, E 20th St, E 21st St, E 22nd St, E 23rd St, E 24th St, E 25th St, E 26th St, E 27th St, E 28th St, E 29th St, E 30th St, E 31st St, E 32nd St, E 33rd St, E 34th St, E 35th St, E 36th St, E 37th St, E 38th St, E 39th St, E 40th St, E 41st St, E 42nd St, E 43rd St, E 44th St, E 45th St, E 46th St, E 47th St, E 48th St, E 49th St, E 50th St, E 51st St, E 52nd St, E 53rd St, E 54th St, E 55th St, E 56th St, E 57th St, E 58th St, E 59th St, E 60th St, E 61st St, E 62nd St, E 63rd St, E 64th St, E 65th St, E 66th St, E 67th St, E 68th St, E 69th St, E 70th St, E 71st St, E 72nd St, E 73rd St, E 74th St, E 75th St, E 76th St, E 77th St, E 78th St, E 79th St, E 80th St, E 81st St, E 82nd St, E 83rd St, E 84th St, E 85th St, E 86th St, E 87th St, E 88th St, E 89th St, E 90th St, E 91st St, E 92nd St, E 93rd St, E 94th St, E 95th St, E 96th St, E 97th St, E 98th St, E 99th St, E 100th St.
- ADA Ramps:** Located at the intersections of E Mission Blvd and E Phillips Blvd, E Franklin Ave and E Olive St, E Grand Ave and E 9th St, E 10th St and E 11th St, E 12th St and E 13th St, E 14th St and E 15th St, E 16th St and E 17th St, E 18th St and E 19th St, E 20th St and E 21st St, E 22nd St and E 23rd St, E 24th St and E 25th St, E 26th St and E 27th St, E 28th St and E 29th St, E 30th St and E 31st St, E 32nd St and E 33rd St, E 34th St and E 35th St, E 36th St and E 37th St, E 38th St and E 39th St, E 40th St and E 41st St, E 42nd St and E 43rd St, E 44th St and E 45th St, E 46th St and E 47th St, E 48th St and E 49th St, E 50th St and E 51st St, E 52nd St and E 53rd St, E 54th St and E 55th St, E 56th St and E 57th St, E 58th St and E 59th St, E 60th St and E 61st St, E 62nd St and E 63rd St, E 64th St and E 65th St, E 66th St and E 67th St, E 68th St and E 69th St, E 70th St and E 71st St, E 72nd St and E 73rd St, E 74th St and E 75th St, E 76th St and E 77th St, E 78th St and E 79th St, E 80th St and E 81st St, E 82nd St and E 83rd St, E 84th St and E 85th St, E 86th St and E 87th St, E 88th St and E 89th St, E 90th St and E 91st St, E 92nd St and E 93rd St, E 94th St and E 95th St, E 96th St and E 97th St, E 98th St and E 99th St, E 100th St and E 101st St.



SAN BERNARDINO
COUNTY

Mill and Overlay, Slurry Seal, Scrub Seal, and ADA Ramps Update

San Bernardino Area



Legend:

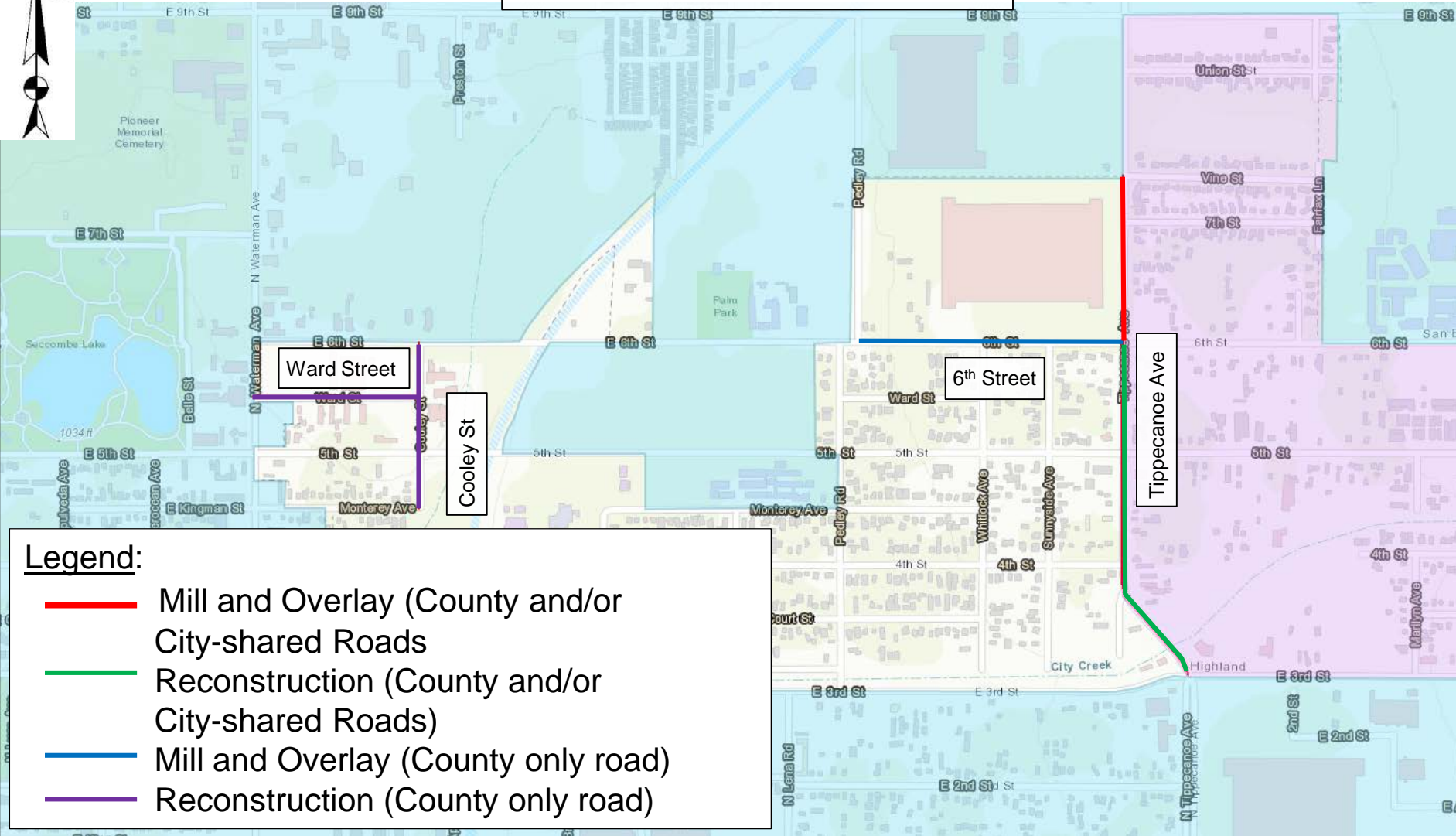
- Reconstruction (County and City shared roads)
- Mill and Overlay (County and City shared roads)
- ADA ramp

COUNTY OF SAN BERNARDINO
DEPARTMENT OF PUBLIC WORKS
YARD 5
DISTRICT 3 & 5
WORK ORDER #: TBD



LOCATION MAP
ARDEN AVENUE AND OTHER ROADS
Various Roads / Locations
Reconstruction, Mill and Overlay, ADA Ramps Update

San Bernardino Area



Legend:

- Mill and Overlay (County and/or City-shared Roads)
- Reconstruction (County and/or City-shared Roads)
- Mill and Overlay (County only road)
- Reconstruction (County only road)

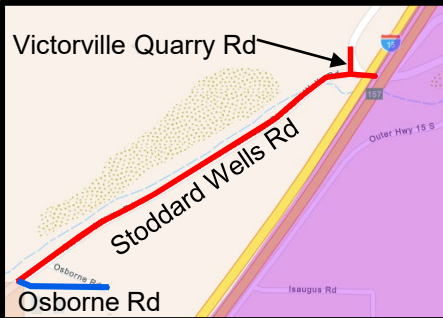
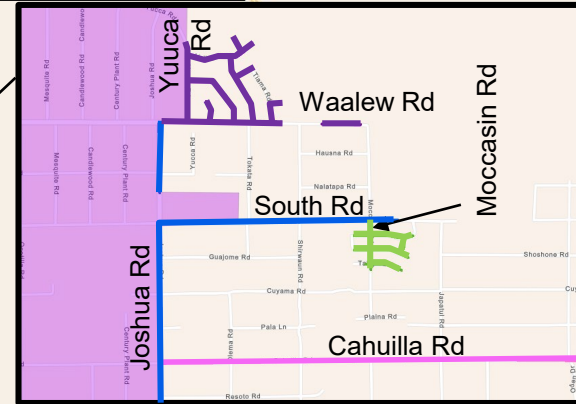
COUNTY OF SAN BERNARDINO
DEPARTMENT OF PUBLIC WORKS
YARD 5
DISTRICT 5
WORK ORDER #:H15056



LOCATION MAP

TIPPECANOE AVENUE AND OTHER ROADS
Various Limits
Mill and Overlay and Reconstruction

Apple Valley Area



Legend:

- Double Chip Seal (County and/or Town of Apple Valley shared road)
- Chip Seal (County and/or Town of Apple Valley shared road)
- Overlay (County and/or Town of Apple Valley shared road)
- Chip Seal and Leveling Course (County and/or Town of Apple Valley shared road)
- Double Chip Seal and Leveling Course (County only)
- Header Cut and Overlay (County only)

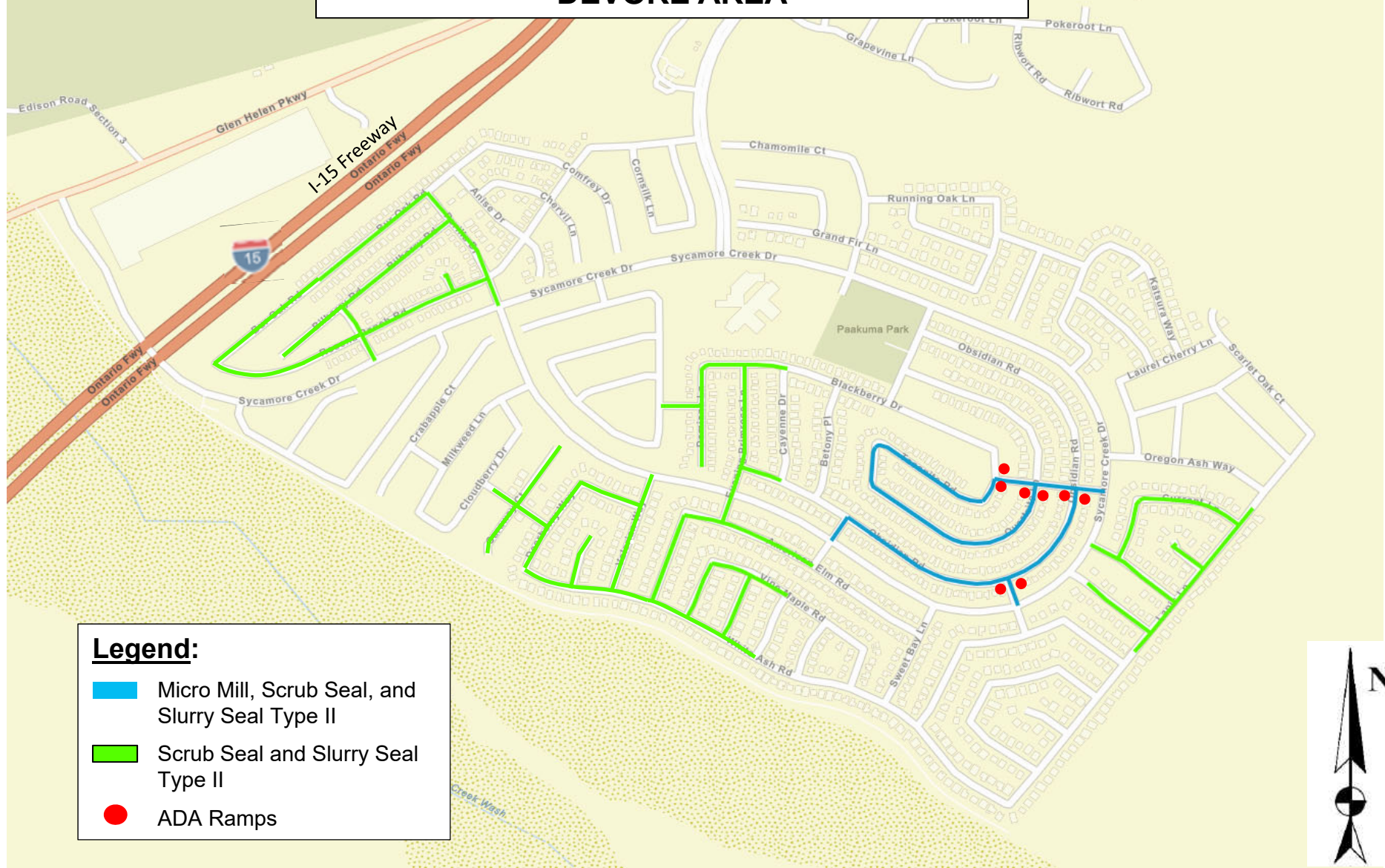
COUNTY OF SAN BERNARDINO
DEPARTMENT OF PUBLIC WORKS
YARD 16
DISTRICT 1
WORK ORDER #: H15088



LOCATION MAP CENTRAL ROAD AND OTHER ROADS

Various Roads/Locations
Overlay, Chip Seal, Double Chip Seal, Leveling Course, Header Cut

DEVORE AREA



COUNTY OF SAN BERNARDINO
DEPARTMENT OF PUBLIC WORKS
YARD 3
DISTRICT 5
WORK ORDER #: H15097



LOCATION MAP
ROSENA RANCH ROAD AND OTHER ROADS
Various Roads/Locations
Micro Mill, Scrub Seal, Slurry Seal Type II

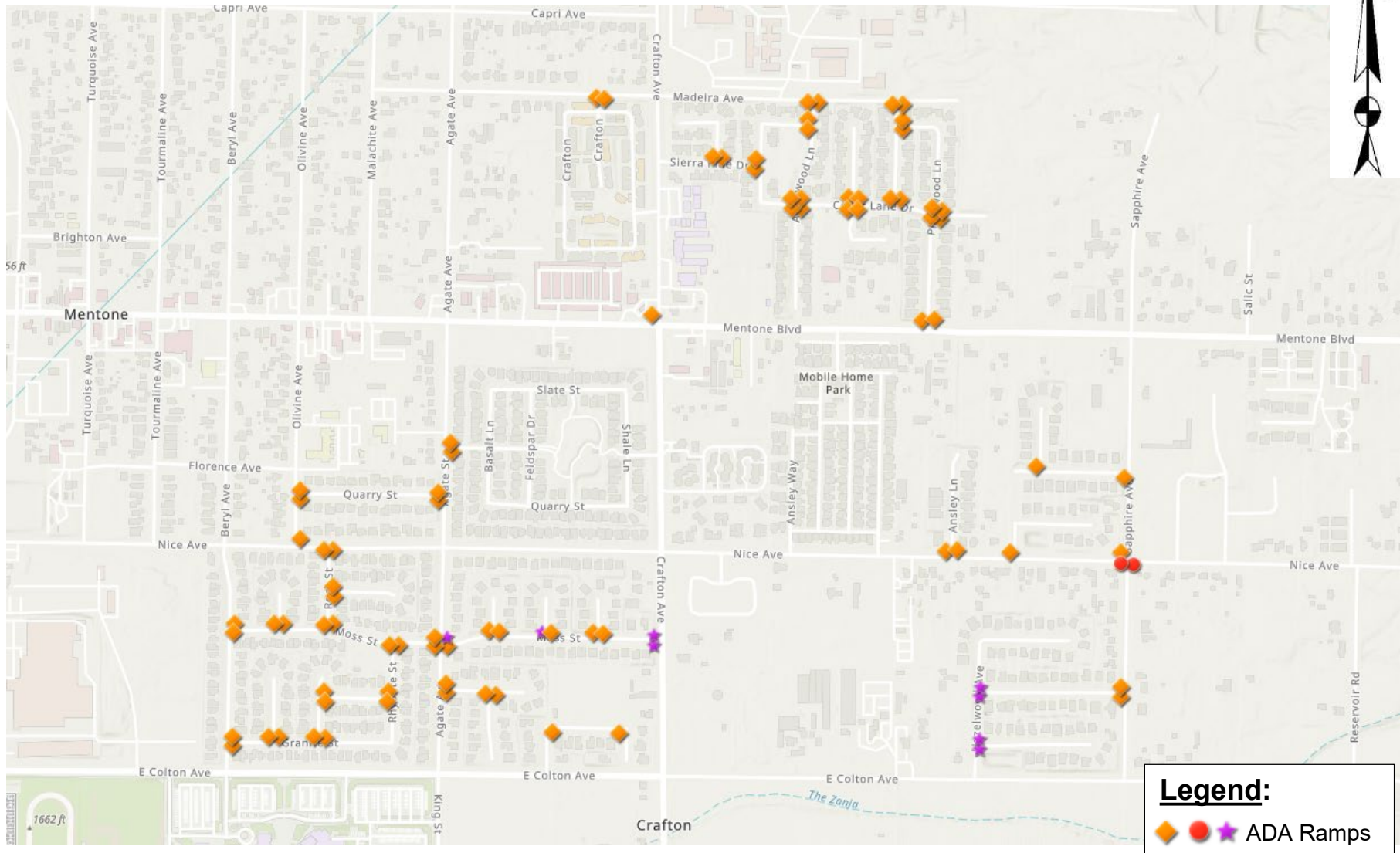


COUNTY OF SAN BERNARDINO
DEPARTMENT OF PUBLIC WORKS
YARD 8
DISTRICT 2
WORK ORDER #:H15109



LOCATION MAP
MATTERHORN DRIVE AND OTHER ROADS
Various Roads / Locations
0.08' Type A, 3/8" Aggregate Gradation, PG 64-16 HMA Overlay

MENTONE AREA



Legend:

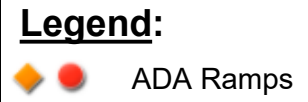


 ADA Ramps

COUNTY OF SAN BERNARDINO
 DEPARTMENT OF PUBLIC WORKS
YARD 5
DISTRICT 3
WORK ORDER #: TBD



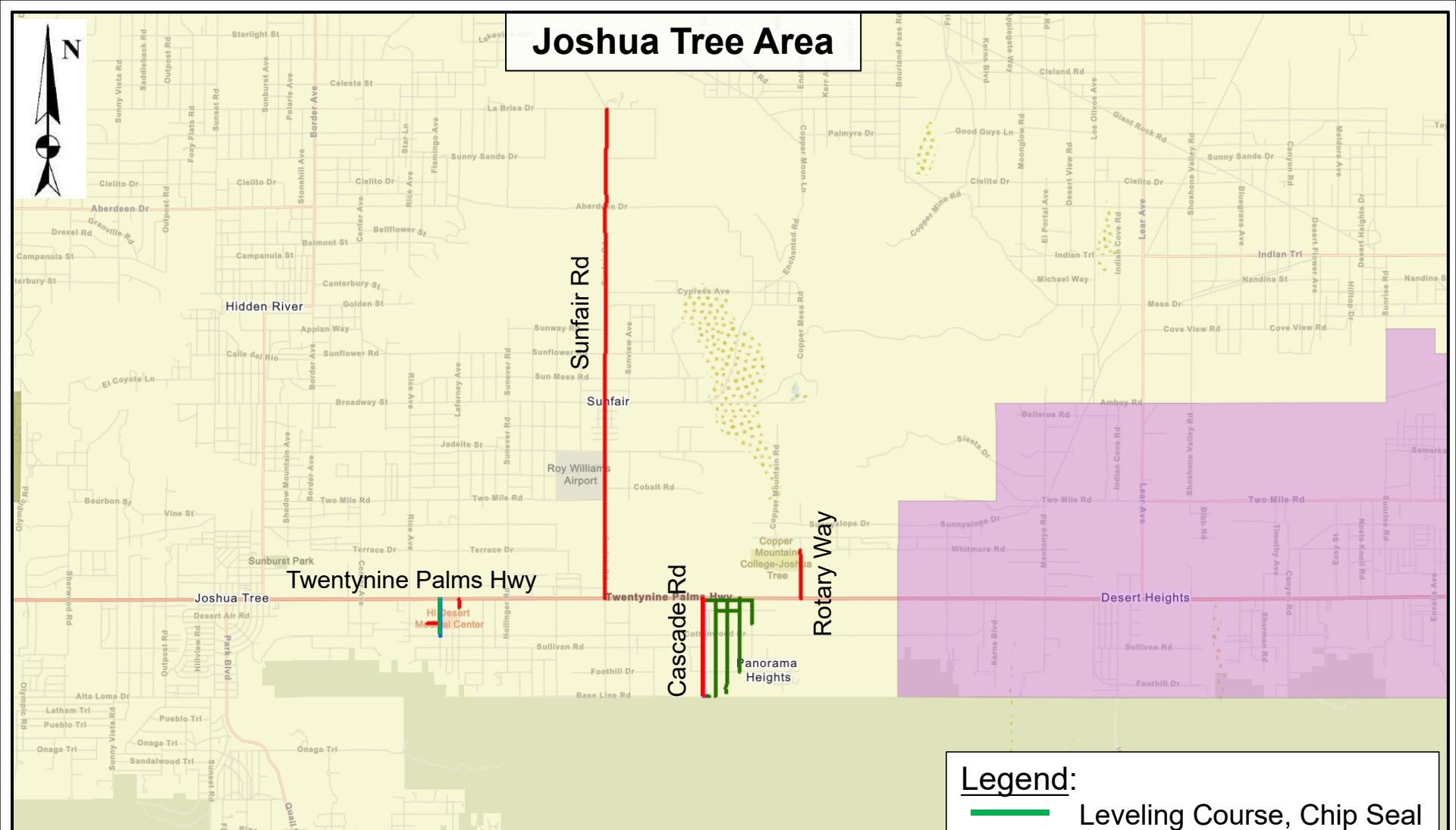
LOCATION MAP
NORTH MENTONE ADA RAMPS
 Various Roads/Locations
 ADA Ramps Update



SAN BERNARDINO
COUNTY

LOCATION MAP
COLTON AREA ADA RAMPS
Various Roads/Locations
ADA Ramps Update

Joshua Tree Area



Legend:

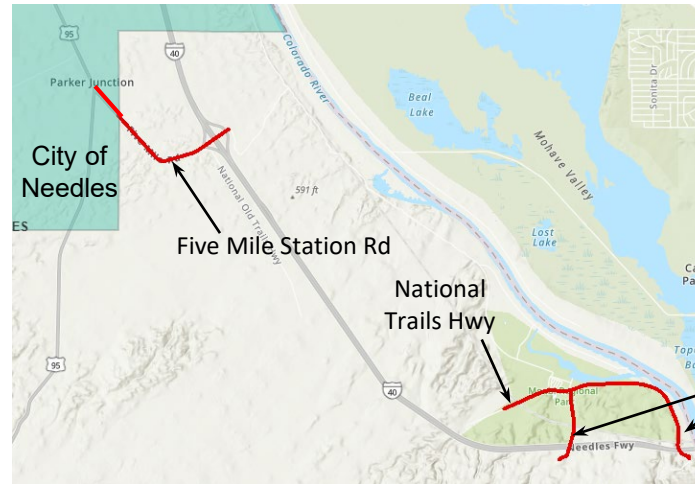
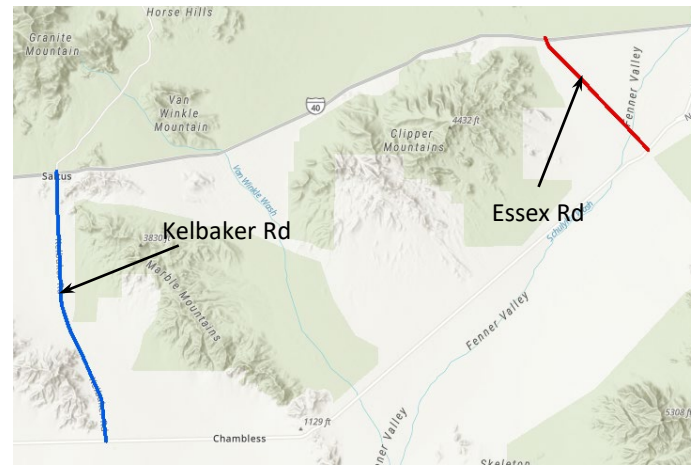
- Leveling Course, Chip Seal
- Crack Seal, Chip Seal

COUNTY OF SAN BERNARDINO
DEPARTMENT OF PUBLIC WORKS
YARD 10
DISTRICT 3
WORK ORDER #: TBD



LOCATION MAP

SUNFAIR RD AND OTHER ROADS
VARIOUS ROADS/LOCATIONS
Crack Seal, Chip Seal, Leveling Course



Legend:

- Chip seal road
- Leveling Course and Chip Seal
- Scrub Seal



Needles Area

COUNTY OF SAN BERNARDINO
DEPARTMENT OF PUBLIC WORKS

**YARD 15
DISTRICT 1
WORK ORDER #: H14968**



LOCATION MAP
Havasu Lake Area Chip/Scrub Seal
2021-22 Chip/Scrub Seal Project