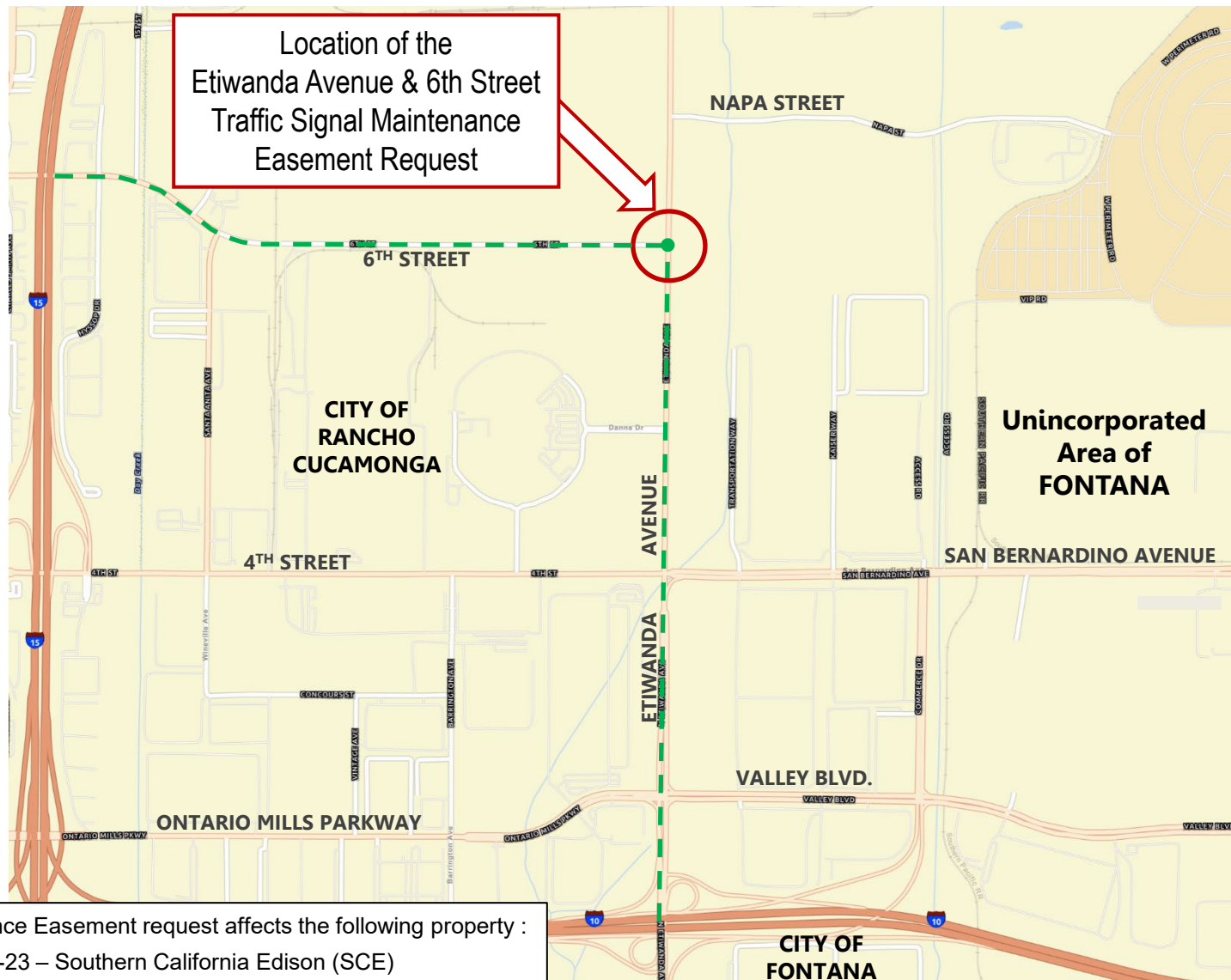


Latitude 34.0862°
Longitude -117.5237°

Section 16,
T. 1 N., R. 6 W.,
S.B.M.



This Traffic Signal Maintenance Easement request affects the following property :
APN: 0229-291-23 – Southern California Edison (SCE)

San Bernardino County
Department of Public Works
SUPERVISORIAL DISTRICT 2



LOCATION MAP
Etiwanda Avenue & 6th Street
Approximately 1.3± miles northerly of I-10 Freeway &
1.2± miles easterly of the I-15 Freeway
Fontana Area