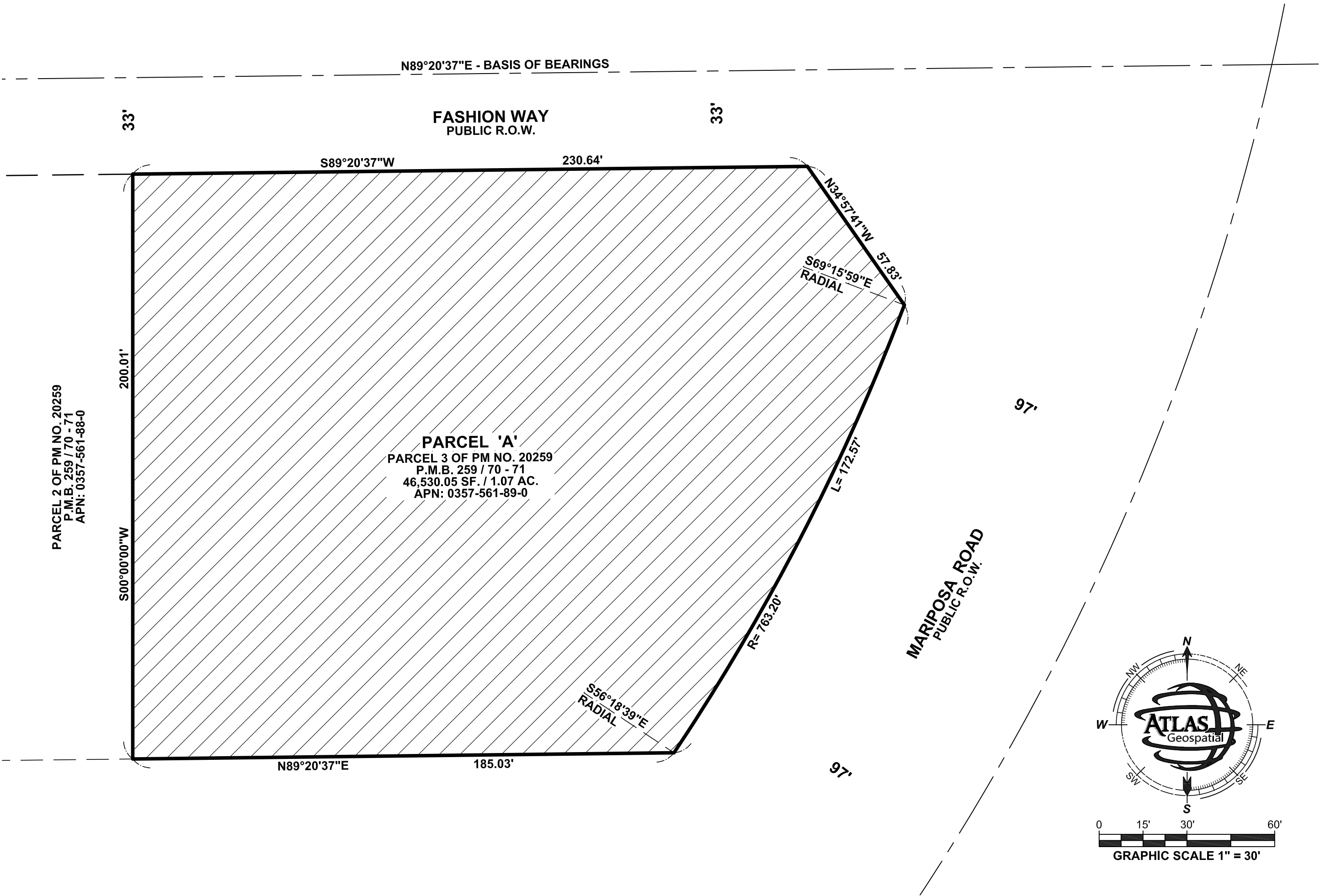


PROPOSED BOUNDARIES FOR ANNEXATION NO. 211
COMMUNITY FACILITIES DISTRICT NO. 94-01 (HESPERIA)
SAN BERNARDINO COUNTY FIRE PROTECTION DISTRICT, STATE OF CALIFORNIA



LEGAL DESCRIPTION

PARCEL 'A'
BEING PARCEL 3 OF PARCEL MAP NO. 20259, IN THE CITY OF HESPERIA, COUNTY OF SAN BERNARDINO, STATE OF CALIFORNIA, AS PER MAP RECORDED IN BOOK 259, PAGES 70 THROUGH 71 INCLUSIVE OF PARCEL MAPS, IN THE OFFICE OF THE COUNTY RECORDER OF SAID COUNTY.

LEGEND

- CFD 94-01 PROPOSED ANNEXATION AREA
- EXISTING RECORD LOT LINE
- CENTERLINE

FILED IN THE OFFICE OF THE SECRETARY OF THE BOARD OF DIRECTORS OF THE SAN BERNARDINO COUNTY FIRE PROTECTION DISTRICT THIS _____ DAY OF _____, 2024

LYNNA MONELL,
SECRETARY OF THE BOARD,
SAN BERNARDINO COUNTY FIRE PROTECTION DISTRICT

I HEREBY CERTIFY THAT THE WITHIN MAP SHOWING THE PROPOSED BOUNDARIES OF ANNEXATION NO. _____ OF SAN BERNARDINO COUNTY FIRE PROTECTION DISTRICT COMMUNITY FACILITIES DISTRICT NO. 94-01, STATE OF CALIFORNIA, WAS APPROVED BY THE BOARD OF DIRECTORS OF THE SAN BERNARDINO COUNTY FIRE PROTECTION DISTRICT AT A REGULAR MEETING THEREOF, HELD ON THE _____ DAY OF _____, 20____, BY ITS RESOLUTION NO. _____.

LYNNA MONELL,
SECRETARY OF THE BOARD,
SAN BERNARDINO COUNTY FIRE PROTECTION DISTRICT

THIS ANNEXATION MAP AMENDS THE BOUNDARY MAP FOR COMMUNITY FACILITIES DISTRICT NO. 94-01 OF THE SAN BERNARDINO COUNTY FIRE PROTECTION DISTRICT, COUNTY OF SAN BERNARDINO, STATE OF CALIFORNIA. PRIOR RECORDED AT BOOK _____ OF MAPS OF ASSESSMENT AND COMMUNITY FACILITIES DISTRICT, AT PAGE IN THE OFFICE OF THE COUNTY RECORDER FOR SAN BERNARDINO COUNTY, CALIFORNIA.

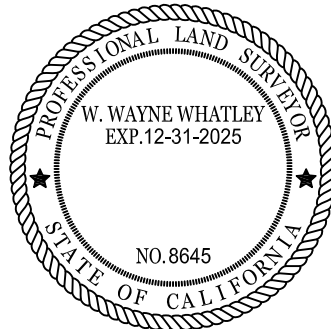
LYNNA MONELL
SECRETARY TO THE BOARD
SAN BERNARDINO COUNTY FIRE PROTECTION DISTRICT
STATE OF CALIFORNIA

SAN BERNARDINO
COUNTY RECORDER'S CERTIFICATE

THIS MAP HAS BEEN FILED UNDER THE DOCUMENT NUMBER _____, THIS _____ DAY OF _____, 20____, AT _____, IN BOOK _____ OF MAPS OF ASSESSMENT AND COMMUNITY FACILITIES DISTRICTS AT PAGE(S) _____, AT THE REQUEST OF THE SAN BERNARDINO COUNTY FIRE PROTECTION DISTRICT COMMUNITY FACILITIES DISTRICT 94-01 IN THE AMOUNT OF \$ _____.

CHRIS WILHITE
ASSESSOR-RECORDER
SAN BERNARDINO COUNTY

BY: _____
DEPUTY RECORDER



PREPARED BY:
ATLAS GEOSPATIAL
W. WAYNE WHATLEY, LS 8645
2191 EL CAMINO REAL, SUITE 208L
OCEANSIDE, CA. 92054

W. WAYNE WHATLEY, L.S. NO. 8645
EXP. DATE: 12/31/25

08/20/2024
DATE