

NOT FOR BID

**GENERAL NOTES**

1. REMOVE EXISTING SPRINKLERS AND RELOCATE SPRINKERS TO BE EXTENDED TO NEW SPRINKLER LOCATIONS SHOWN ON THIS PLAN.
2. CAP EXISTING PIPING NOT RELOCATED.



**ARCHITECT**

**Savely Healthcare Architects**  
ARCHITECTURE + PLANNING + DESIGN

505 Technology Drive, Suite 175  
Irvine, CA 92615  
(949) 431-0071

---

**PROJECT**

**ARROWHEAD REGIONAL MEDICAL CENTER**  
800 N. PEPPER AVE.  
COLTON, CALIFORNIA 92324

**HYBRID OPERATING ROOMS**

**CONSULTANT LOG SHEET**

NO.	DATE	REVISIONS

**PROFESSIONAL SEALS**




**AGENCY APPROVAL**

REVIEWED IN ACCORDANCE WITH THE REQUIREMENTS OF TPA 60A

**APPROVED**

OFFICE OF THE STATE ARCHITECT & ENGINEER

Alison Chang

**LEGEND**

SYMBOL	ABBREV	DESCRIPTION
---	10	EXISTING WALL
---	15	NEW FIRE RATED GLASS
---	20	NEW FIRE RATED GLASS
---	25	EXISTING BRAMA IN PROJECT TO BE REMOVED
---	30	NEW SPRAWL EXISTING
---	35	NEW SPRAWL CONCRETE EXISTING
---	40	NEW SPRAWL CONCRETE EXISTING
---	45	EXISTING BRAMA (SEE DETAILS)
---	50	EXISTING BRAMA (SEE DETAILS)
---	55	EXISTING BRAMA (SEE DETAILS)
---	60	EXISTING BRAMA (SEE DETAILS)
---	65	EXISTING BRAMA (SEE DETAILS)
---	70	EXISTING BRAMA (SEE DETAILS)
---	75	EXISTING BRAMA (SEE DETAILS)
---	80	EXISTING BRAMA (SEE DETAILS)
---	85	EXISTING BRAMA (SEE DETAILS)
---	90	EXISTING BRAMA (SEE DETAILS)
---	95	EXISTING BRAMA (SEE DETAILS)
---	100	EXISTING BRAMA (SEE DETAILS)
---	105	EXISTING BRAMA (SEE DETAILS)
---	110	EXISTING BRAMA (SEE DETAILS)
---	115	EXISTING BRAMA (SEE DETAILS)
---	120	EXISTING BRAMA (SEE DETAILS)
---	125	EXISTING BRAMA (SEE DETAILS)
---	130	EXISTING BRAMA (SEE DETAILS)
---	135	EXISTING BRAMA (SEE DETAILS)
---	140	EXISTING BRAMA (SEE DETAILS)
---	145	EXISTING BRAMA (SEE DETAILS)
---	150	EXISTING BRAMA (SEE DETAILS)
---	155	EXISTING BRAMA (SEE DETAILS)
---	160	EXISTING BRAMA (SEE DETAILS)
---	165	EXISTING BRAMA (SEE DETAILS)
---	170	EXISTING BRAMA (SEE DETAILS)
---	175	EXISTING BRAMA (SEE DETAILS)
---	180	EXISTING BRAMA (SEE DETAILS)
---	185	EXISTING BRAMA (SEE DETAILS)
---	190	EXISTING BRAMA (SEE DETAILS)
---	195	EXISTING BRAMA (SEE DETAILS)
---	200	EXISTING BRAMA (SEE DETAILS)
---	205	EXISTING BRAMA (SEE DETAILS)
---	210	EXISTING BRAMA (SEE DETAILS)
---	215	EXISTING BRAMA (SEE DETAILS)
---	220	EXISTING BRAMA (SEE DETAILS)
---	225	EXISTING BRAMA (SEE DETAILS)
---	230	EXISTING BRAMA (SEE DETAILS)
---	235	EXISTING BRAMA (SEE DETAILS)
---	240	EXISTING BRAMA (SEE DETAILS)
---	245	EXISTING BRAMA (SEE DETAILS)
---	250	EXISTING BRAMA (SEE DETAILS)
---	255	EXISTING BRAMA (SEE DETAILS)
---	260	EXISTING BRAMA (SEE DETAILS)
---	265	EXISTING BRAMA (SEE DETAILS)
---	270	EXISTING BRAMA (SEE DETAILS)
---	275	EXISTING BRAMA (SEE DETAILS)
---	280	EXISTING BRAMA (SEE DETAILS)
---	285	EXISTING BRAMA (SEE DETAILS)
---	290	EXISTING BRAMA (SEE DETAILS)
---	295	EXISTING BRAMA (SEE DETAILS)
---	300	EXISTING BRAMA (SEE DETAILS)
---	305	EXISTING BRAMA (SEE DETAILS)
---	310	EXISTING BRAMA (SEE DETAILS)
---	315	EXISTING BRAMA (SEE DETAILS)
---	320	EXISTING BRAMA (SEE DETAILS)
---	325	EXISTING BRAMA (SEE DETAILS)
---	330	EXISTING BRAMA (SEE DETAILS)
---	335	EXISTING BRAMA (SEE DETAILS)
---	340	EXISTING BRAMA (SEE DETAILS)
---	345	EXISTING BRAMA (SEE DETAILS)
---	350	EXISTING BRAMA (SEE DETAILS)
---	355	EXISTING BRAMA (SEE DETAILS)
---	360	EXISTING BRAMA (SEE DETAILS)
---	365	EXISTING BRAMA (SEE DETAILS)
---	370	EXISTING BRAMA (SEE DETAILS)
---	375	EXISTING BRAMA (SEE DETAILS)
---	380	EXISTING BRAMA (SEE DETAILS)
---	385	EXISTING BRAMA (SEE DETAILS)
---	390	EXISTING BRAMA (SEE DETAILS)
---	395	EXISTING BRAMA (SEE DETAILS)
---	400	EXISTING BRAMA (SEE DETAILS)
---	405	EXISTING BRAMA (SEE DETAILS)
---	410	EXISTING BRAMA (SEE DETAILS)
---	415	EXISTING BRAMA (SEE DETAILS)
---	420	EXISTING BRAMA (SEE DETAILS)
---	425	EXISTING BRAMA (SEE DETAILS)
---	430	EXISTING BRAMA (SEE DETAILS)
---	435	EXISTING BRAMA (SEE DETAILS)
---	440	EXISTING BRAMA (SEE DETAILS)
---	445	EXISTING BRAMA (SEE DETAILS)
---	450	EXISTING BRAMA (SEE DETAILS)
---	455	EXISTING BRAMA (SEE DETAILS)
---	460	EXISTING BRAMA (SEE DETAILS)
---	465	EXISTING BRAMA (SEE DETAILS)
---	470	EXISTING BRAMA (SEE DETAILS)
---	475	EXISTING BRAMA (SEE DETAILS)
---	480	EXISTING BRAMA (SEE DETAILS)
---	485	EXISTING BRAMA (SEE DETAILS)
---	490	EXISTING BRAMA (SEE DETAILS)
---	495	EXISTING BRAMA (SEE DETAILS)
---	500	EXISTING BRAMA (SEE DETAILS)
---	505	EXISTING BRAMA (SEE DETAILS)
---	510	EXISTING BRAMA (SEE DETAILS)
---	515	EXISTING BRAMA (SEE DETAILS)
---	520	EXISTING BRAMA (SEE DETAILS)
---	525	EXISTING BRAMA (SEE DETAILS)
---	530	EXISTING BRAMA (SEE DETAILS)
---	535	EXISTING BRAMA (SEE DETAILS)
---	540	EXISTING BRAMA (SEE DETAILS)
---	545	EXISTING BRAMA (SEE DETAILS)
---	550	EXISTING BRAMA (SEE DETAILS)
---	555	EXISTING BRAMA (SEE DETAILS)
---	560	EXISTING BRAMA (SEE DETAILS)
---	565	EXISTING BRAMA (SEE DETAILS)
---	570	EXISTING BRAMA (SEE DETAILS)
---	575	EXISTING BRAMA (SEE DETAILS)
---	580	EXISTING BRAMA (SEE DETAILS)
---	585	EXISTING BRAMA (SEE DETAILS)
---	590	EXISTING BRAMA (SEE DETAILS)
---	595	EXISTING BRAMA (SEE DETAILS)
---	600	EXISTING BRAMA (SEE DETAILS)
---	605	EXISTING BRAMA (SEE DETAILS)
---	610	EXISTING BRAMA (SEE DETAILS)
---	615	EXISTING BRAMA (SEE DETAILS)
---	620	EXISTING BRAMA (SEE DETAILS)
---	625	EXISTING BRAMA (SEE DETAILS)
---	630	EXISTING BRAMA (SEE DETAILS)
---	635	EXISTING BRAMA (SEE DETAILS)
---	640	EXISTING BRAMA (SEE DETAILS)
---	645	EXISTING BRAMA (SEE DETAILS)
---	650	EXISTING BRAMA (SEE DETAILS)
---	655	EXISTING BRAMA (SEE DETAILS)
---	660	EXISTING BRAMA (SEE DETAILS)
---	665	EXISTING BRAMA (SEE DETAILS)
---	670	EXISTING BRAMA (SEE DETAILS)
---	675	EXISTING BRAMA (SEE DETAILS)
---	680	EXISTING BRAMA (SEE DETAILS)
---	685	EXISTING BRAMA (SEE DETAILS)
---	690	EXISTING BRAMA (SEE DETAILS)
---	695	EXISTING BRAMA (SEE DETAILS)
---	700	EXISTING BRAMA (SEE DETAILS)
---	705	EXISTING BRAMA (SEE DETAILS)
---	710	EXISTING BRAMA (SEE DETAILS)
---	715	EXISTING BRAMA (SEE DETAILS)
---	720	EXISTING BRAMA (SEE DETAILS)
---	725	EXISTING BRAMA (SEE DETAILS)
---	730	EXISTING BRAMA (SEE DETAILS)
---	735	EXISTING BRAMA (SEE DETAILS)
---	740	EXISTING BRAMA (SEE DETAILS)
---	745	EXISTING BRAMA (SEE DETAILS)
---	750	EXISTING BRAMA (SEE DETAILS)
---	755	EXISTING BRAMA (SEE DETAILS)
---	760	EXISTING BRAMA (SEE DETAILS)
---	765	EXISTING BRAMA (SEE DETAILS)
---	770	EXISTING BRAMA (SEE DETAILS)
---	775	EXISTING BRAMA (SEE DETAILS)
---	780	EXISTING BRAMA (SEE DETAILS)
---	785	EXISTING BRAMA (SEE DETAILS)
---	790	EXISTING BRAMA (SEE DETAILS)
---	795	EXISTING BRAMA (SEE DETAILS)
---	800	EXISTING BRAMA (SEE DETAILS)
---	805	EXISTING BRAMA (SEE DETAILS)
---	810	EXISTING BRAMA (SEE DETAILS)
---	815	EXISTING BRAMA (SEE DETAILS)
---	820	EXISTING BRAMA (SEE DETAILS)
---	825	EXISTING BRAMA (SEE DETAILS)
---	830	EXISTING BRAMA (SEE DETAILS)
---	835	EXISTING BRAMA (SEE DETAILS)
---	840	EXISTING BRAMA (SEE DETAILS)
---	845	EXISTING BRAMA (SEE DETAILS)
---	850	EXISTING BRAMA (SEE DETAILS)
---	855	EXISTING BRAMA (SEE DETAILS)
---	860	EXISTING BRAMA (SEE DETAILS)
---	865	EXISTING BRAMA (SEE DETAILS)
---	870	EXISTING BRAMA (SEE DETAILS)
---	875	EXISTING BRAMA (SEE DETAILS)
---	880	EXISTING BRAMA (SEE DETAILS)
---	885	EXISTING BRAMA (SEE DETAILS)
---	890	EXISTING BRAMA (SEE DETAILS)
---	895	EXISTING BRAMA (SEE DETAILS)
---	900	EXISTING BRAMA (SEE DETAILS)
---	905	EXISTING BRAMA (SEE DETAILS)
---	910	EXISTING BRAMA (SEE DETAILS)
---	915	EXISTING BRAMA (SEE DETAILS)
---	920	EXISTING BRAMA (SEE DETAILS)
---	925	EXISTING BRAMA (SEE DETAILS)
---	930	EXISTING BRAMA (SEE DETAILS)
---	935	EXISTING BRAMA (SEE DETAILS)
---	940	EXISTING BRAMA (SEE DETAILS)
---	945	EXISTING BRAMA (SEE DETAILS)
---	950	EXISTING BRAMA (SEE DETAILS)
---	955	EXISTING BRAMA (SEE DETAILS)
---	960	EXISTING BRAMA (SEE DETAILS)
---	965	EXISTING BRAMA (SEE DETAILS)
---	970	EXISTING BRAMA (SEE DETAILS)
---	975	EXISTING BRAMA (SEE DETAILS)
---	980	EXISTING BRAMA (SEE DETAILS)
---	985	EXISTING BRAMA (SEE DETAILS)
---	990	EXISTING BRAMA (SEE DETAILS)
---	995	EXISTING BRAMA (SEE DETAILS)
---	1000	EXISTING BRAMA (SEE DETAILS)

**1 PARTIAL SECOND FLOOR DEMOLITION - FIRE PROTECTION PLAN - HYBRID OR**

**DRAWN BY:** [Signature] **CHECKED BY:** [Signature] **DATE:** 03.11.2024

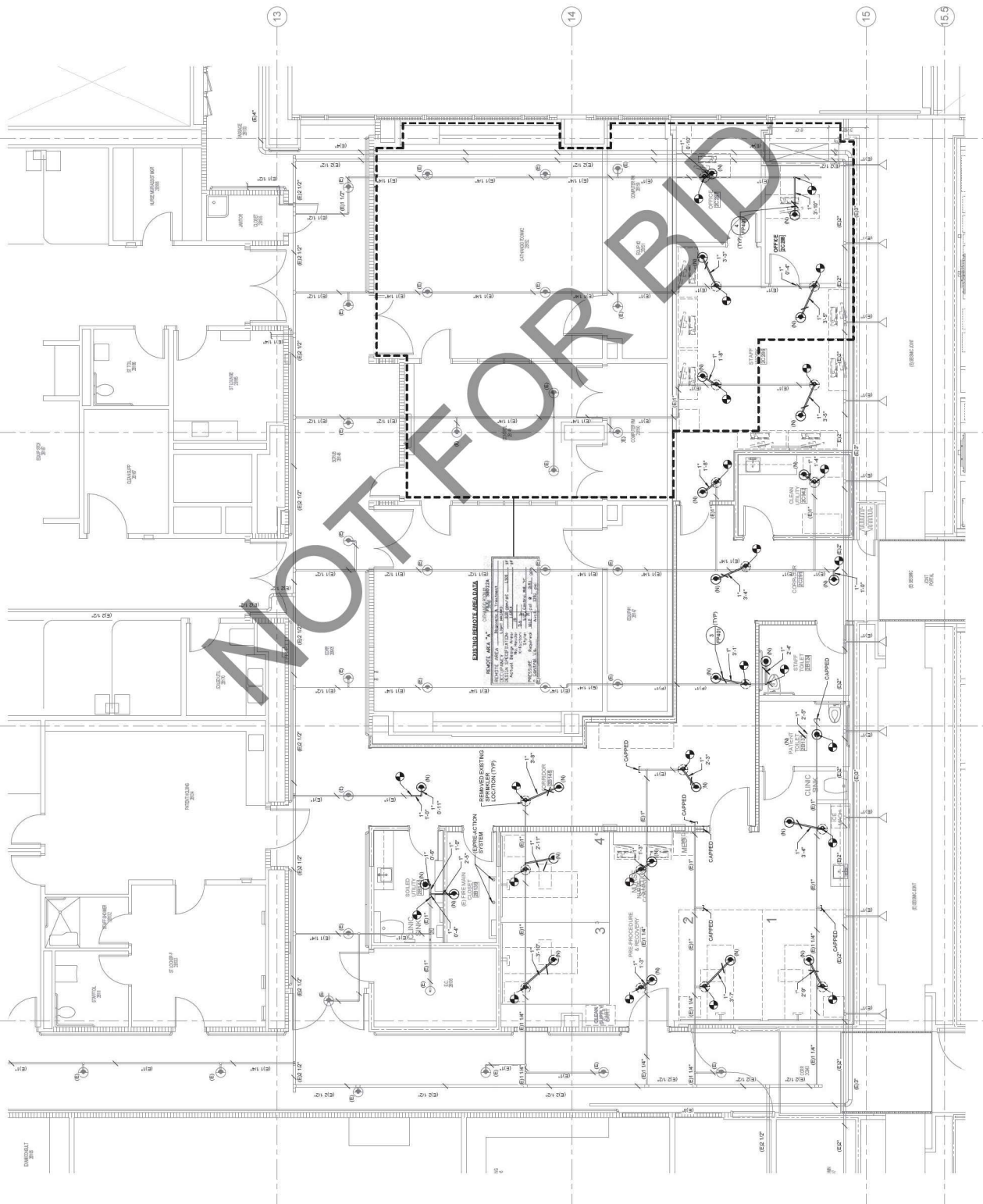
**PROJECT NUMBER:** SHL # 2018C-05  
**PGI#:** S22110-00-00

**SHEET TITLE:** PARTIAL SECOND FLOOR DEMOLITION - HYBRID OR - FIRE PROTECTION PLAN

**SHEET NUMBER:** **FP202**

**GENERAL NOTES**

1. EXISTING SPRINKLERS FROM REMODEL CONTRACTORS TO BE REMOVED. LOCATION OF SPRINKLERS SHOWN ON DRAWINGS PROVIDE ADDITIONAL NUMBERS AS REQUIRED.



PERIOPERATIVE  
 EXISTING SPRINKLERS REMOVED - 28 TOTAL  
 NEW SPRINKLERS INSTALLED - 28 TOTAL

**LEGEND**

SYMBOL	DESCRIPTION
(N)	NEW 1/2\"/>



**ARCHITECT**  
**Savely Healthcare Architects**  
 ARCHITECTURE + PLANNING + DESIGN  
 505 Technology Drive, Suite 175  
 Colton, CA 92316  
 (949) 431-0377

**PROJECT**  
**ARROWHEAD REGIONAL MEDICAL CENTER**  
 400 N. PEPPER AVE.  
 COLTON, CALIFORNIA 92324

**HYBRID OPERATING ROOMS**  
 (CONSULTANT LOGO HERE)  
**IMEG**  
 CONSULTANTS  
 901 W. PEPPERITE  
 COLTON, CA 92314  
 (949) 431-0377  
 PROJECT # 2024-01-0001

**PROFESSIONAL SEALS**

NO. DATE REVISIONS

APPROVED  
 [Signature]  
 [Stamp]

**AGENCY APPROVAL**

REMOVED IN ACCORDANCE WITH THE REQUIREMENTS OF TIA, CDR  
 Director of Health Care Accreditation & Information  
 Office of Healthcare Inspection, Planning & Development  
 400 N. PEPPER AVE.  
 COLTON, CA 92314  
 ALLEN CHANG

**DRAWN BY** [Name] **CHECKED BY** [Name]  
**DATE** 03.11.2024

**PROJECT NUMBER** 2024-01-0001  
**SCALE** AS SHOWN  
**HCAI #** S222149-36-00

**SHEET TITLE**  
 PARTIAL SECOND FLOOR REMODEL - PERIOPERATIVE - FIRE PROTECTION PLAN  
**SHEET NUMBER**

**1 PARTIAL SECOND FLOOR REMODEL - FIRE PROTECTION PLAN - PERIOPERATIVE**

**FP203**

## GENERAL NOTES

1. EXISTING RISERS FROM REMODEL DRAWINGS TO BE USED IN LOCATION OF SPRINKLERS SHOWN ON DRAWINGS. PROVIDE ADDITIONAL HANGERS AS REQUIRED.



① PARTIAL SECOND FLOOR REMODEL - FIRE PROTECTION PLAN - HYBRID OR

100'-0 1/8" = 1" = 0'



ARCHITECT

**Savely Healthcare Architects**  
 ARCHITECTURE + PLANNING + DESIGN  
 505 Technology Drive, Suite 175  
 Colton, CA 92324  
 (949) 431-0271

PROJECT

**ARROWHEAD REGIONAL MEDICAL CENTER**  
 400 N. PEPPER AVE.  
 COLTON, CALIFORNIA 92324

PROJECT

**HYBRID OPERATING ROOMS**

(CONSULTANT LOGO HERE)

**IMEG**  
 CONSULTANTS  
 301 W. PEPPER  
 COLTON, CA 92324  
 PROJECT #23-03-0430

DATE

NO.	DATE	REVISIONS

PROFESSIONAL SEALS



DRAWN BY: [Signature]  
 CHECKED BY: DATE 10.11.2024  
 PROJECT NUMBER: 2023SC-03  
 SCALE: AS SHOWN  
 HCAL #: S222149-36-00

SHEET TITLE: PARTIAL SECOND FLOOR - REMODEL - HYBRID OR - FIRE PROTECTION PLAN  
 SHEET NUMBER:

**FP204**

KEY NOTES



NOT FOR BID



**SAVELY HEALTHCARE ARCHITECTS**  
 ARCHITECTURE + PLANNING + DESIGN  
 505 Technology Drive, Suite 175  
 Colton, CA 92316  
 (949) 431-0371

**ARROWHEAD REGIONAL MEDICAL CENTER**  
 400 N. PEPPER AVE.  
 COLTON, CALIFORNIA 92324

**HYBRID OPERATING ROOMS**



301 W. REMONTE  
 COLTON, CA 92316  
 (949) 431-1666  
 PROJECT #23-01-0403

NO. DATE REVISIONS

NO.	DATE	REVISIONS

PROFESSIONAL SEALS



AGENCY APPROVAL



DRAWN BY: [Signature]  
 CHECKED BY: [Signature]  
 DATE: 03.11.2024

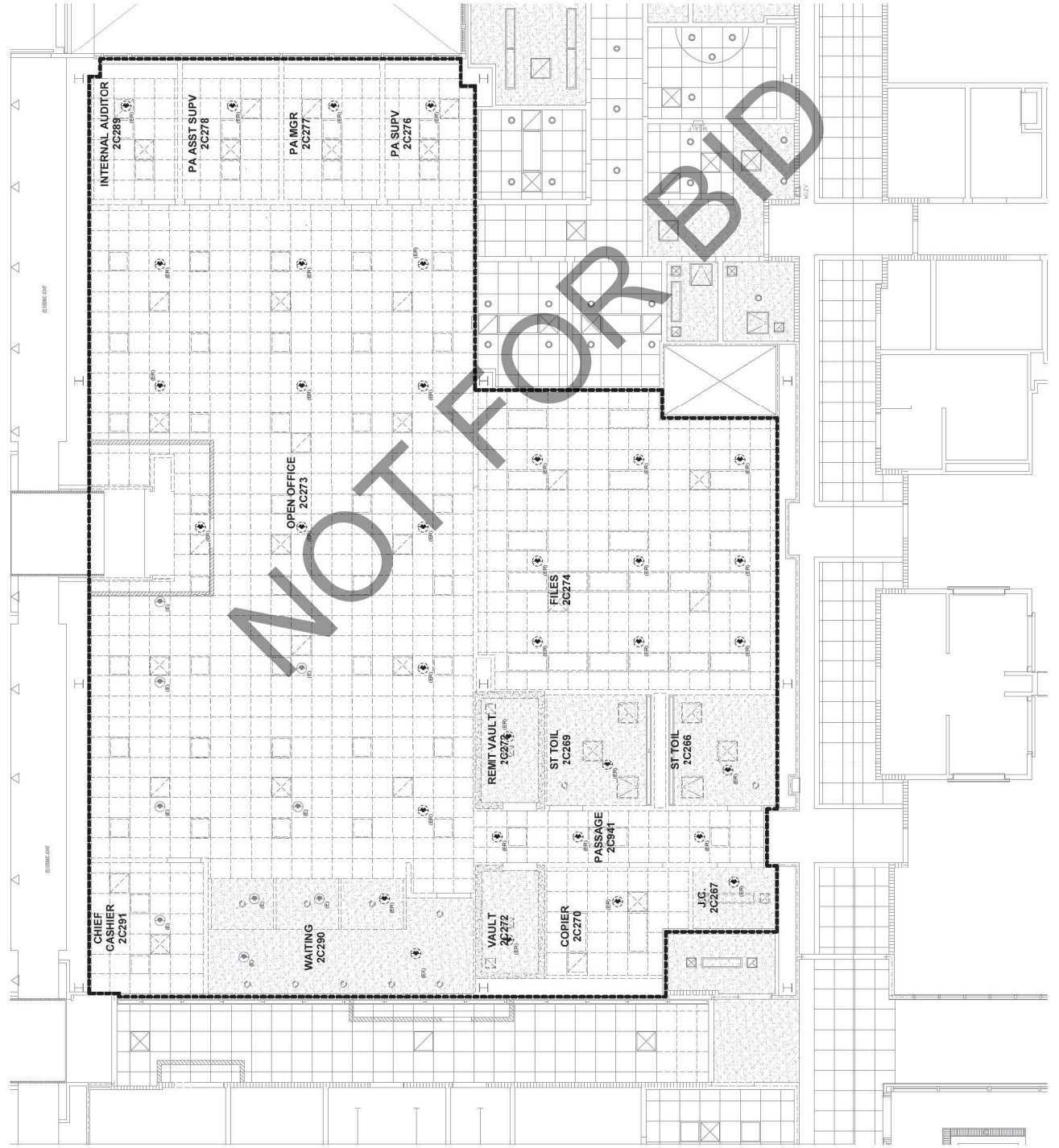
PROJECT NUMBER: 23050-01  
 SQA #: 23050-01  
 HCAI #: S222149-36-00

SHEET TITLE: PARTIAL SECOND FLOOR CEILING DEMOLITION - PERI-OPERATIVE - FIRE PROTECTION PLAN

SHEET NUMBER: FP301

1 REFLECTED CEILING PLAN - PERI-OPERATIVE - FIRE PROTECTION - DEMOLITION

KEY NOTES



NOT FOR BID

1 REFLECTED CEILING PLAN - HYBRID OR - FIRE PROTECTION - DEMOLITION



ARCHITECT

**Savely Healthcare Architects**  
ARCHITECTURE + PLANNING + DESIGN  
505 Technology Drive, Suite 175  
Costa Mesa, CA 92626  
(949) 431-0377

PROJECT

**ARROWHEAD REGIONAL MEDICAL CENTER**  
400 N. PEPPER AVE.  
COLTON, CALIFORNIA 92324

HYBRID OPERATING ROOMS

(CONSULTANT LOGO HERE)



901 W. REMONTE  
DUNSMITH, CA 91734  
PROJECT #2024-0140  
ISSUED FOR PERMITS  
DATE: 05/11/2024

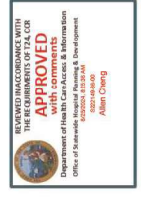
NO. DATE REVISIONS

NO.	DATE	REVISIONS
Δ		
Δ		
Δ		
Δ		
Δ		

PROFESSIONAL SEALS



AGENCY APPROVAL



DRAWN BY: [Name]  
CHECKED BY: [Name]  
DATE: 05/11/2024

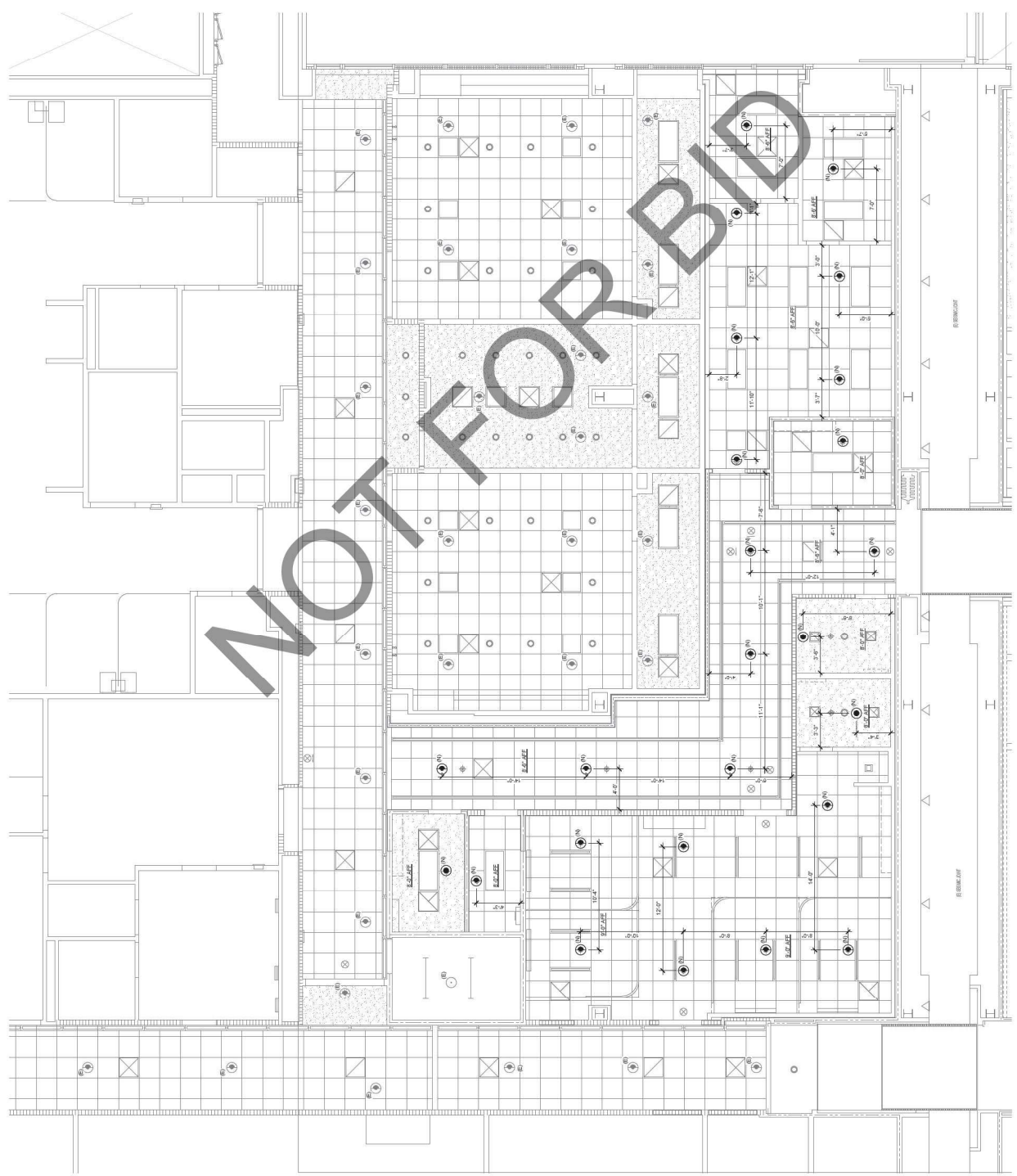
PROJECT NUMBER:  
SAA #: 2024-01  
HCAI #: S222148-36-00

SHEET TITLE:  
PARTIAL SECOND FLOOR CEILING DEMOLITION -  
HYBRID OR - FIRE PROTECTION PLAN  
SHEET NUMBER

FP302

GENERAL NOTES

1. REVERSE CHARGES AS NOTED ON RINGS SHALL STAND AS PRECEDENT.



SYMBOL	ABBREVIATION	DESCRIPTION
1	NEW FIRE WATER SUPPLY	
2	EXISTING SPINNALETTA PRECINCT TO REMAIN	
3	NEW SPINNALETTA PRECINCT	
4	EXISTING SPINNALETTA PRECINCT TO BE REMOVED	
5	NEW SPINNALETTA PRECINCT TO BE REMOVED	
6	EXISTING SPINNALETTA PRECINCT TO BE REMOVED	
7	NEW SPINNALETTA PRECINCT TO BE REMOVED	
8	EXISTING SPINNALETTA PRECINCT TO BE REMOVED	
9	NEW SPINNALETTA PRECINCT TO BE REMOVED	
10	EXISTING SPINNALETTA PRECINCT TO BE REMOVED	
11	NEW SPINNALETTA PRECINCT TO BE REMOVED	
12	EXISTING SPINNALETTA PRECINCT TO BE REMOVED	
13	NEW SPINNALETTA PRECINCT TO BE REMOVED	
14	EXISTING SPINNALETTA PRECINCT TO BE REMOVED	
15	NEW SPINNALETTA PRECINCT TO BE REMOVED	
16	EXISTING SPINNALETTA PRECINCT TO BE REMOVED	
17	NEW SPINNALETTA PRECINCT TO BE REMOVED	
18	EXISTING SPINNALETTA PRECINCT TO BE REMOVED	
19	NEW SPINNALETTA PRECINCT TO BE REMOVED	
20	EXISTING SPINNALETTA PRECINCT TO BE REMOVED	
21	NEW SPINNALETTA PRECINCT TO BE REMOVED	
22	EXISTING SPINNALETTA PRECINCT TO BE REMOVED	
23	NEW SPINNALETTA PRECINCT TO BE REMOVED	
24	EXISTING SPINNALETTA PRECINCT TO BE REMOVED	
25	NEW SPINNALETTA PRECINCT TO BE REMOVED	
26	EXISTING SPINNALETTA PRECINCT TO BE REMOVED	
27	NEW SPINNALETTA PRECINCT TO BE REMOVED	
28	EXISTING SPINNALETTA PRECINCT TO BE REMOVED	
29	NEW SPINNALETTA PRECINCT TO BE REMOVED	
30	EXISTING SPINNALETTA PRECINCT TO BE REMOVED	
31	NEW SPINNALETTA PRECINCT TO BE REMOVED	
32	EXISTING SPINNALETTA PRECINCT TO BE REMOVED	
33	NEW SPINNALETTA PRECINCT TO BE REMOVED	
34	EXISTING SPINNALETTA PRECINCT TO BE REMOVED	
35	NEW SPINNALETTA PRECINCT TO BE REMOVED	
36	EXISTING SPINNALETTA PRECINCT TO BE REMOVED	
37	NEW SPINNALETTA PRECINCT TO BE REMOVED	
38	EXISTING SPINNALETTA PRECINCT TO BE REMOVED	
39	NEW SPINNALETTA PRECINCT TO BE REMOVED	
40	EXISTING SPINNALETTA PRECINCT TO BE REMOVED	
41	NEW SPINNALETTA PRECINCT TO BE REMOVED	
42	EXISTING SPINNALETTA PRECINCT TO BE REMOVED	
43	NEW SPINNALETTA PRECINCT TO BE REMOVED	
44	EXISTING SPINNALETTA PRECINCT TO BE REMOVED	
45	NEW SPINNALETTA PRECINCT TO BE REMOVED	
46	EXISTING SPINNALETTA PRECINCT TO BE REMOVED	
47	NEW SPINNALETTA PRECINCT TO BE REMOVED	
48	EXISTING SPINNALETTA PRECINCT TO BE REMOVED	
49	NEW SPINNALETTA PRECINCT TO BE REMOVED	
50	EXISTING SPINNALETTA PRECINCT TO BE REMOVED	
51	NEW SPINNALETTA PRECINCT TO BE REMOVED	
52	EXISTING SPINNALETTA PRECINCT TO BE REMOVED	
53	NEW SPINNALETTA PRECINCT TO BE REMOVED	
54	EXISTING SPINNALETTA PRECINCT TO BE REMOVED	
55	NEW SPINNALETTA PRECINCT TO BE REMOVED	
56	EXISTING SPINNALETTA PRECINCT TO BE REMOVED	
57	NEW SPINNALETTA PRECINCT TO BE REMOVED	
58	EXISTING SPINNALETTA PRECINCT TO BE REMOVED	
59	NEW SPINNALETTA PRECINCT TO BE REMOVED	
60	EXISTING SPINNALETTA PRECINCT TO BE REMOVED	
61	NEW SPINNALETTA PRECINCT TO BE REMOVED	
62	EXISTING SPINNALETTA PRECINCT TO BE REMOVED	
63	NEW SPINNALETTA PRECINCT TO BE REMOVED	
64	EXISTING SPINNALETTA PRECINCT TO BE REMOVED	
65	NEW SPINNALETTA PRECINCT TO BE REMOVED	
66	EXISTING SPINNALETTA PRECINCT TO BE REMOVED	
67	NEW SPINNALETTA PRECINCT TO BE REMOVED	
68	EXISTING SPINNALETTA PRECINCT TO BE REMOVED	
69	NEW SPINNALETTA PRECINCT TO BE REMOVED	
70	EXISTING SPINNALETTA PRECINCT TO BE REMOVED	
71	NEW SPINNALETTA PRECINCT TO BE REMOVED	
72	EXISTING SPINNALETTA PRECINCT TO BE REMOVED	
73	NEW SPINNALETTA PRECINCT TO BE REMOVED	
74	EXISTING SPINNALETTA PRECINCT TO BE REMOVED	
75	NEW SPINNALETTA PRECINCT TO BE REMOVED	
76	EXISTING SPINNALETTA PRECINCT TO BE REMOVED	
77	NEW SPINNALETTA PRECINCT TO BE REMOVED	
78	EXISTING SPINNALETTA PRECINCT TO BE REMOVED	
79	NEW SPINNALETTA PRECINCT TO BE REMOVED	
80	EXISTING SPINNALETTA PRECINCT TO BE REMOVED	
81	NEW SPINNALETTA PRECINCT TO BE REMOVED	
82	EXISTING SPINNALETTA PRECINCT TO BE REMOVED	
83	NEW SPINNALETTA PRECINCT TO BE REMOVED	
84	EXISTING SPINNALETTA PRECINCT TO BE REMOVED	
85	NEW SPINNALETTA PRECINCT TO BE REMOVED	
86	EXISTING SPINNALETTA PRECINCT TO BE REMOVED	
87	NEW SPINNALETTA PRECINCT TO BE REMOVED	
88	EXISTING SPINNALETTA PRECINCT TO BE REMOVED	
89	NEW SPINNALETTA PRECINCT TO BE REMOVED	
90	EXISTING SPINNALETTA PRECINCT TO BE REMOVED	
91	NEW SPINNALETTA PRECINCT TO BE REMOVED	
92	EXISTING SPINNALETTA PRECINCT TO BE REMOVED	
93	NEW SPINNALETTA PRECINCT TO BE REMOVED	
94	EXISTING SPINNALETTA PRECINCT TO BE REMOVED	
95	NEW SPINNALETTA PRECINCT TO BE REMOVED	
96	EXISTING SPINNALETTA PRECINCT TO BE REMOVED	
97	NEW SPINNALETTA PRECINCT TO BE REMOVED	
98	EXISTING SPINNALETTA PRECINCT TO BE REMOVED	
99	NEW SPINNALETTA PRECINCT TO BE REMOVED	
100	EXISTING SPINNALETTA PRECINCT TO BE REMOVED	



ARCHITECT  
**Savely Healthcare Architects**  
 ARCHITECTURE + PLANNING + DESIGN  
 505 Technology Drive, Suite 175  
 Colton, CA 92316  
 (949) 431-0371

PROJECT  
**ARROWHEAD REGIONAL MEDICAL CENTER**  
 400 N. PEPPER AVE.  
 COLTON, CALIFORNIA 92324

HYBRID OPERATING ROOMS  
 (CONSULTANT LOGO HERE)  
**IMEG**  
 901 W. REMONTE  
 COLTON, CA 92316  
 (949) 431-0371  
 PROJECT #2024-0100

NO. DATE REVISIONS

△

△

△

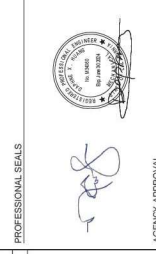
△

△

△

PROFESSIONAL SEALS

AGENCY APPROVAL



DRAWN BY: [Name] CHECKED BY: [Name] DATE: 05.11.2024

PROJECT NUMBER: [Number] SCALE: [Scale] DATE: 05.11.2024

PROJECT NAME: [Name] SCALE: [Scale] DATE: 05.11.2024

PROJECT NUMBER: [Number] SCALE: [Scale] DATE: 05.11.2024

SHEET TITLE: [Title]  
 PARTIAL SECOND FLOOR CEILING, RENOVATION - PERI-OPERATIVE - FIRE PROTECTION PLAN  
 SHEET NUMBER: [Number]

FP303

1 REFLECTED CEILING PLAN - PERI-OPERATIVE - FIRE PROTECTION





901 W. PEBBLETE  
 ONYARD 425 PTH  
 PROJECT 823-91-0403  
 DATE 08/11/2024

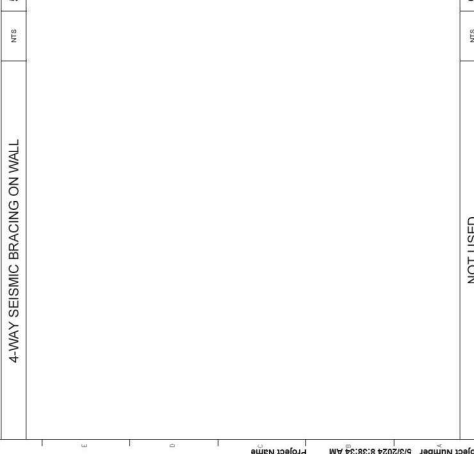
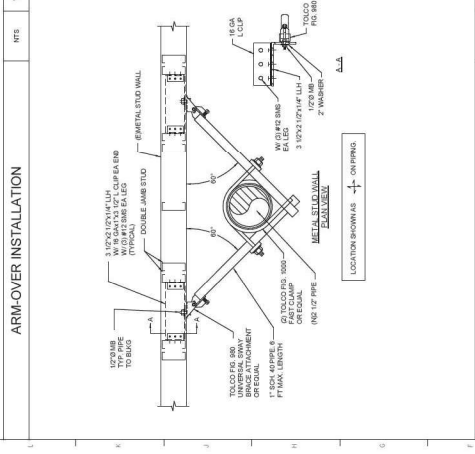
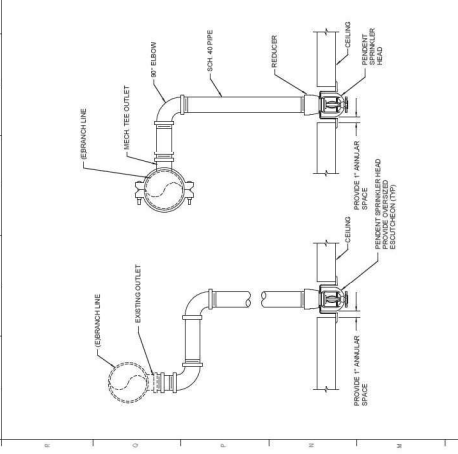
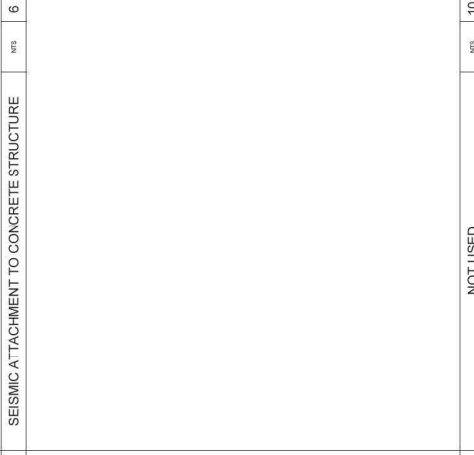
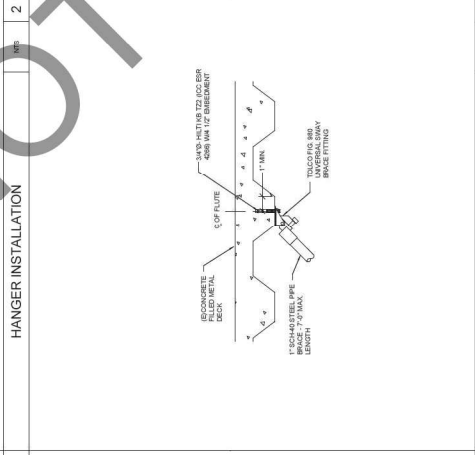
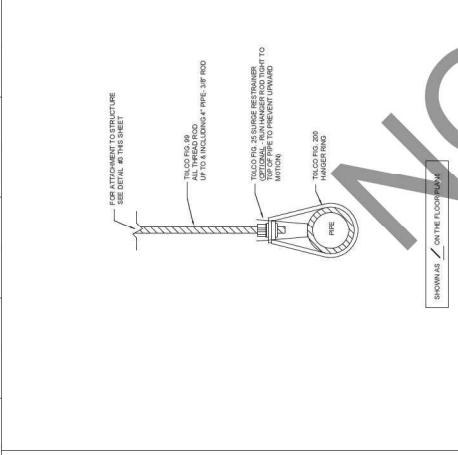
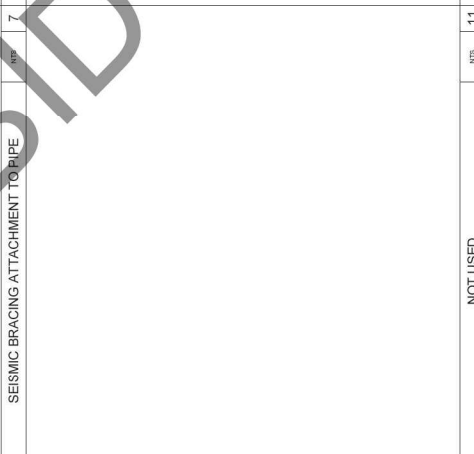
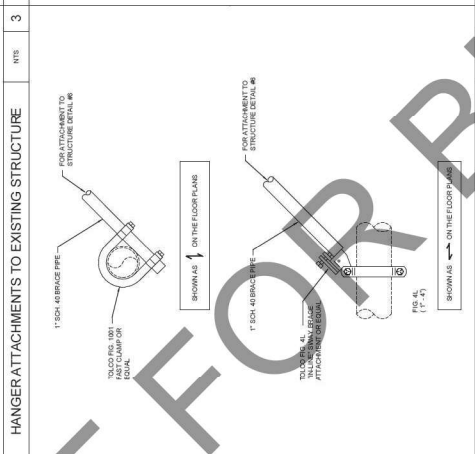
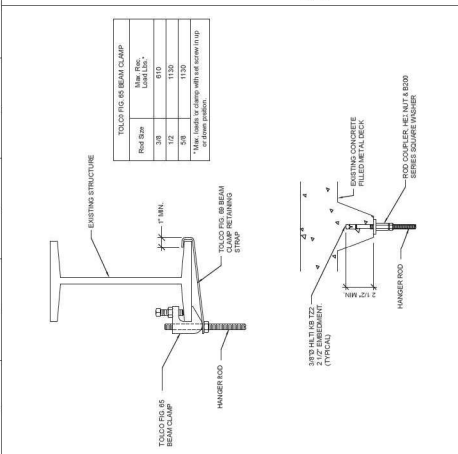
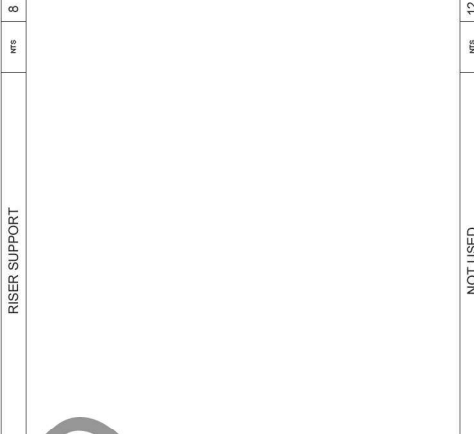
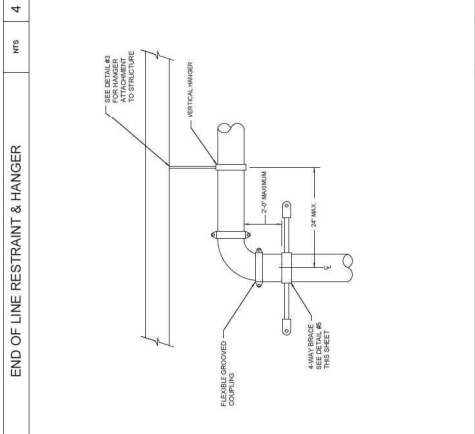
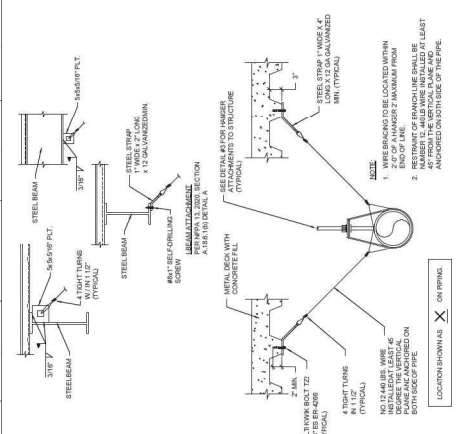
NO.	DATE	REVISIONS
△		
△		
△		
△		
△		

PROFESSIONAL SEALS



DRAWN BY: [Name]  
 CHECKED BY: [Name]  
 DATE: 03/11/2024

PROJECT NUMBER: [Number]  
 SHEET NUMBER: [Number]









ARCHITECT

**Savely Healthcare Architects**  
ARCHITECTURE + PLANNING + DESIGN  
505 Technology Drive, Suite 175  
Colton, CA 92324  
(949) 431-0071

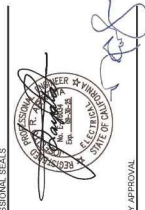
PROJECT

**ARROWHEAD REGIONAL MEDICAL CENTER**  
COLTON, CALIFORNIA 92324

HYBRID OPERATING ROOMS

NO.	DATE	REVISIONS
		COMPLETED DRAWINGS 2/17/2023
		REVISED DRAWINGS 2/24/2023
A		REVISED DRAWINGS 7/27/2023

PROFESSIONAL SEALS



AGENCY APPROVAL



DRAWN BY	CHECKED BY	DATE
YSL	YSL	03/28/2023

PROJECT NUMBER

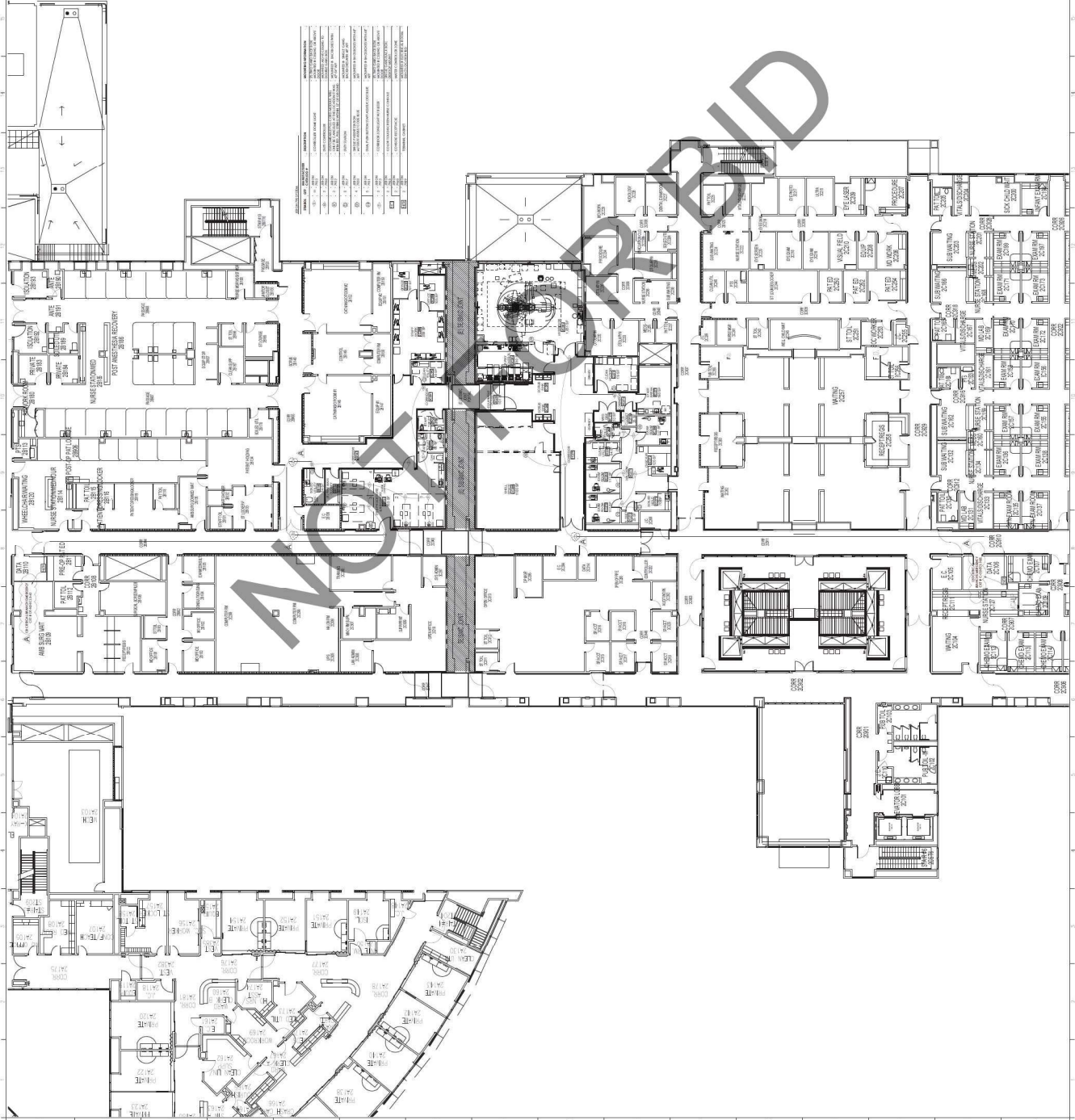
SCALE

SHEET TITLE

SHEET NUMBER

2ND FLOOR DEVICE LAYOUT NURSE CALL SYSTEM

**NC-201**





ARCHITECT

Savely

Healthcare Architects  
ARCHITECTURE + PLANNING + DESIGN

505 Technology Drive, Suite 175  
Irvine, CA 92618  
(949) 431-0071

PROJECT

ARROWHEAD  
REGIONAL MEDICAL CENTER  
400 N. HEMLOCK AVE.  
COLTON, CALIFORNIA 92324

HYBRID OPERATING ROOMS

NO.	DATE	REVISIONS
		COMPLETED DRAWINGS 2/17/2023
		REVISED DRAWINGS 2/04/2023
A		REVISED DRAWINGS 7/27/2023

PROFESSIONAL SEALS



AGENCY APPROVAL



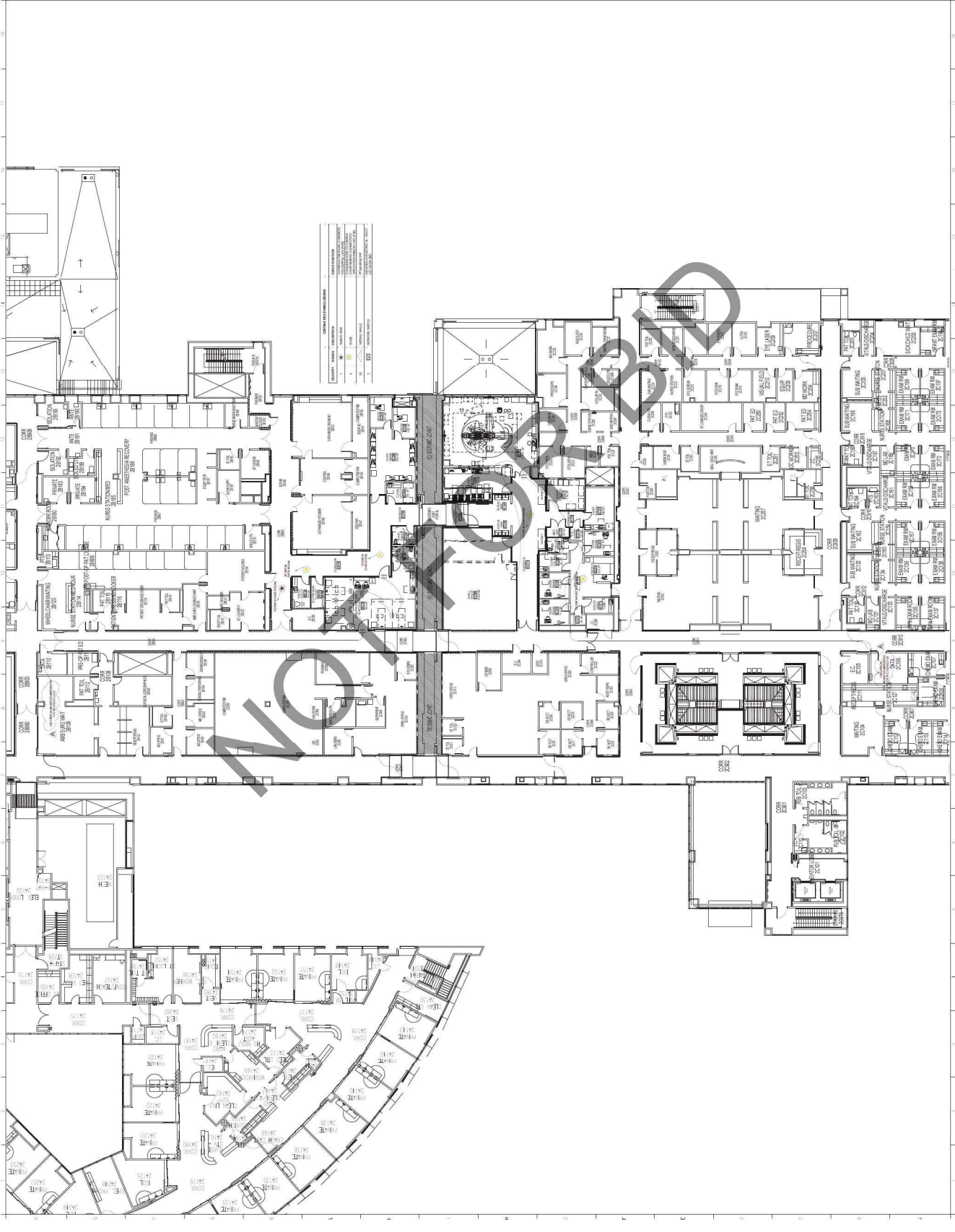
DRAWN BY: [Name] CHECKED BY: DATE: 03.20.2023

PROJECT NUMBER: 202202-06

SHEET NUMBER: 2022-06-00

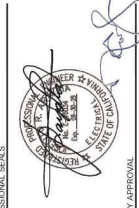
SHEET TITLE: 2ND FLOOR DEVICE LAYOUT RTLS SYSTEM

SHEET NUMBER: NC-202



NO.	DATE	REVISIONS
1	2/17/2023	COMPLETED DRAWINGS
2	2/24/2023	REVISED DRAWINGS
3	7/27/2023	A. REVISED DRAWINGS

PROFESSIONAL SEALS



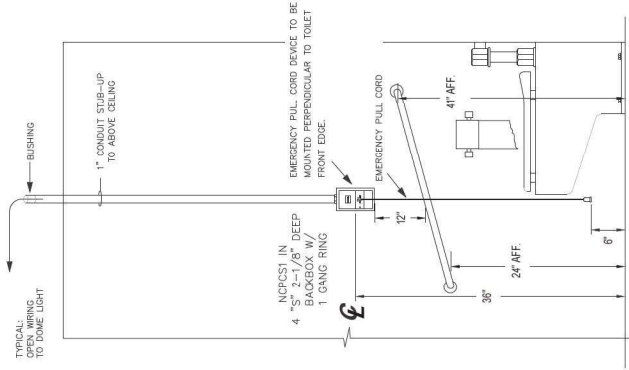
AGENCY APPROVAL



DRAWN BY:	CSL	CHECKED BY:	DATE
PROJECT NUMBER:	20220206		02/23/2023
SCALE:	AS SHOWN		
SHEET TITLE:			

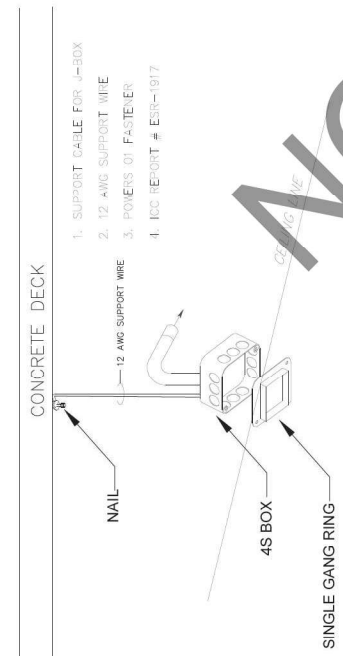
NURSE CALL DETAILS

SHEET NUMBER  
**NC-301**

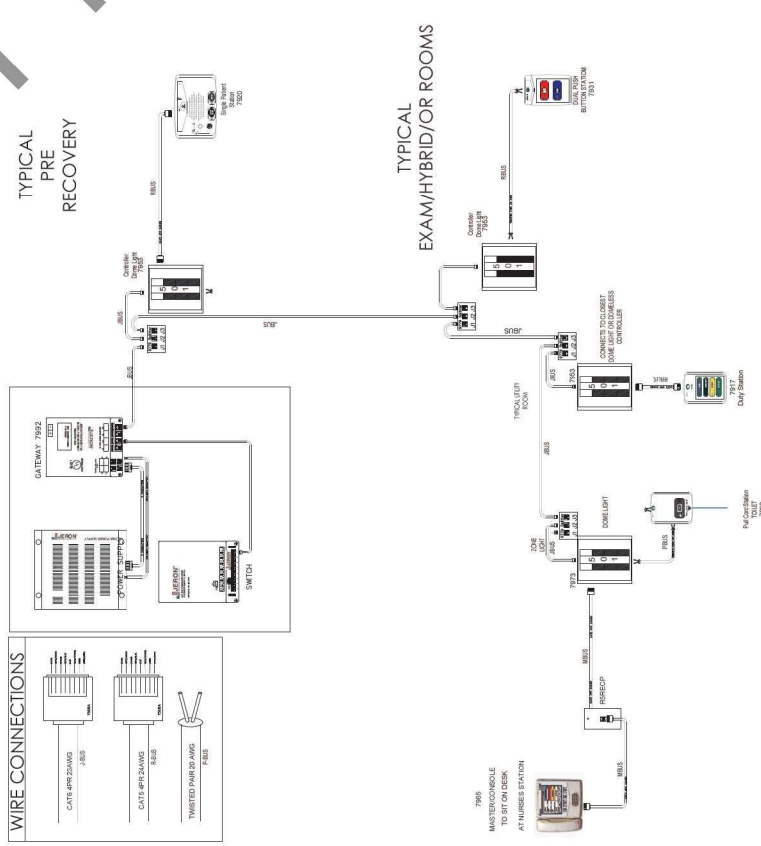


ATTENTION: THE CALL STATION SHALL BE LOCATED OUTSIDE WITHIN 1/2 OF THE FRONT OF THE TOILET WITHIN 4 FEET ABOVE THE FLOOR FINISH.

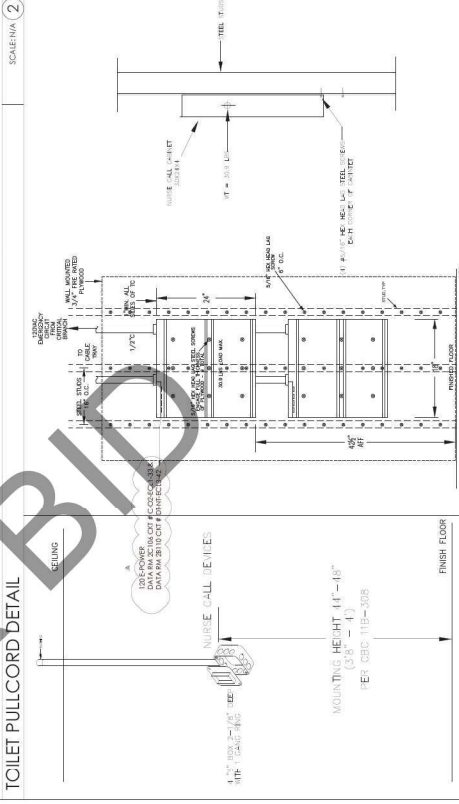
TOILET PULLCORD DETAIL SCALE: 1/4" = 1'-0"



MOUNTING DETAILS FOR CENTRAK RTL DEVICES SCALE: 1/4" = 1'-0"



NURSE CALL TYPICAL SYSTEM WIRING DIAGRAMS - JERON 790 SYSTEM SCALE: 1/4" = 1'-0"

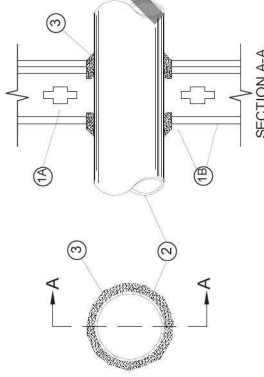


TYPICAL NURSE CALL DETAILS SCALE: 1/4" = 1'-0"

**System No.W.L.-1001**

June 15, 2005

- F Ratings - 1, 2, 3 and 4 Hr (See Items 2 and 3)
- T Ratings - 0, 1, 2, 3, and 4 Hr (See Item 3)
- L Rating At Ambient - less than 1 CFM/sq ft
- L Rating At 400 F - less than 1 CFM/sq ft



- 1. Wall Assembly** - The 1, 2, 3 or 4 hr fire-rated gypsum wallboard wall assembly shall be constructed of the materials and in the manner described in the individual U300 or U400 Series Wall or Partition Designs in the UL Fire Resistance Directory and shall include the following construction features:
  - A. Studs** - Wall framing may consist of either wood studs (max. 2 hr fire rated assemblies) or steel channel studs. Wood studs to consist of nominal 2 by 4 in. (51 by 102 mm) lumber spaced 16 in. (406 mm) OC with nominal 2 by 4 in. (51 by 102 mm) lumber end plates and cross braces. Steel studs to be min. 3-5/8 in. (92 mm) wide by 1-3/8 in. (35 mm) deep channels spaced max 24 in. (610 mm) OC.
  - B. Gypsum Board** - Nom 1/2 or 5/8 in. (13 or 16 mm) thick, 4 ft. (122 cm) wide with square or tapered edges. The gypsum wallboard type, thickness, number of layers, fastener type and sheet orientation shall be as specified in the individual U300 or U400 Series Design in the UL Fire Resistance Directory. Max. seam of opening is 26 in. (660 mm).
- 2. Through Penetrant** - One metallic pipe, conduit or tubing installed either concentrically or eccentrically within the firestop system. The annular space between pipe, conduit or tubing and periphery of opening shall be min of 0 in. (0 mm) (point contact) to max 2 in. (51 mm). Pipe, conduit or tubing to be rigidly supported on both sides of wall assembly. The following types and sizes of metallic pipes, conduits or tubing may be used:
  - A. Steel Pipe** - Nom 24 in. (610 mm) diam (or smaller) Schedule 10 (or heavier) steel pipe.
  - B. Iron Pipe** - Nom 24 in. (610 mm) diam (or smaller) service weight (or heavier) cast iron soil pipe, nom 12 in. (305 mm) diam (or smaller) or Class 50 (or heavier) ductile iron pressure pipe.
  - C. Conduit** - Nom 6 in. (152 mm) diam (or smaller) steel conduit or nom 4 in. (102 mm) diam (or smaller) steel electrical metallic tubing.
  - D. Copper Tubing** - Nom 6 (152 mm) diam (or smaller) Type L (or heavier) copper tubing.
  - E. Cast Iron Pipe** - Nom 12 (305 mm) diam (or smaller) cast iron pipe.
- F. Through Penetrating Product\*** - Flexible Metal Piping - The following types of steel flexible metal gas piping may be used:
  1. Nom 2 in. (51 mm) diam (or smaller) steel flexible metal gas piping. Plastic covering on piping may or may not be removed on both sides of floor or wall assembly.

**OMEGA FLEX INC**

2. Nom 1 in. (25 mm) diam (or smaller) steel flexible metal gas piping. Plastic covering on piping may or may not be removed on both sides of floor or wall assembly.

**TITIFLEX CORP  
A BUNDY CO**

3. Nom 1 in. (25 mm) diam (or smaller) steel flexible metal gas piping. Plastic covering on piping may or may not be removed on both sides of floor or wall assembly.

**WARD MFG INC**

3. Fill Void or Cavity Material\* - Caulk or Sealant - Min 5/8 x 1/4 x 7/8 and 3/4 x 1/2 in. (16, 32, 48 and 64 mm) thickness of caulk for 1, 2, 3, and 4 hr fire rated assemblies. Sealant or caulk to be applied with trowel or applicator and flush with faces of wall. Min 1/4 in. (6 mm) diam bead of caulk applied to gypsum board/partition interface at point contact location on both sides of wall.

The hourly F Rating of the firestop system is dependent upon the hourly fire rating of the wall assembly in which it is installed, as shown in the following table.  
The hourly T Rating of the firestop system is dependent upon the type or size of the pipe or conduit and the hourly fire rating of the wall assembly in which it is installed, as indicated below.

Max Pipe or Conduit Diam in. (mm)	F Rating - hr	T Rating - hr
1 (25)	3 or 4	0*, 1 or 2
4 (102)	1 or 2	3 or 4
6 (152)	3 or 4	0
12 (305)	1 or 2	0

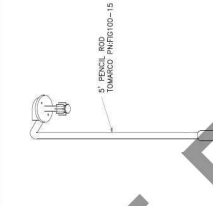
\*NOTE: MATERIAL WAS EXTRACTED FROM THE PROTECTION PRODUCTS FROM THE 2004 EDITION OF THE UL FIRE RESISTANCE DIRECTORY.

THROUGH PENETRATION FIRE STOP DETAIL # 1 & 2

SCALE N/A (1)

- \* Representative Rework Method 2 - refer to Reworker's Checklist.
- \* Maximum Spacing - 4" O.C.
- \* Maximum Height - 12" O.C.
- \* Maximum Depth - 1/2" O.C.
- \* Maximum Spacing - 12" O.C.
- \* Maximum Height - 12" O.C.
- \* Maximum Depth - 1/2" O.C.
- \* Maximum Spacing - 12" O.C.
- \* Maximum Height - 12" O.C.
- \* Maximum Depth - 1/2" O.C.
- \* Maximum Spacing - 12" O.C.
- \* Maximum Height - 12" O.C.
- \* Maximum Depth - 1/2" O.C.
- \* Maximum Spacing - 12" O.C.
- \* Maximum Height - 12" O.C.
- \* Maximum Depth - 1/2" O.C.
- \* Maximum Spacing - 12" O.C.
- \* Maximum Height - 12" O.C.
- \* Maximum Depth - 1/2" O.C.

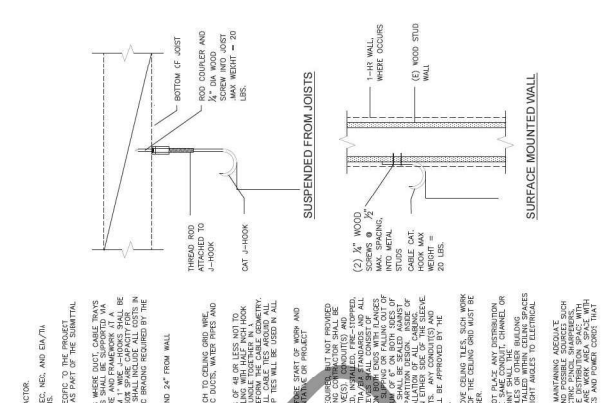
- \* Color may vary in RED, WHITE, BLUE, GREEN, YELLOW and BLACK.
- \* Color may vary in RED, WHITE, BLUE, GREEN, YELLOW and BLACK.
- \* Color may vary in RED, WHITE, BLUE, GREEN, YELLOW and BLACK.
- \* Color may vary in RED, WHITE, BLUE, GREEN, YELLOW and BLACK.



**STIFF HANGER SYSTEM # 3**

- GENERAL NOTES
1. J-HOOK SYSTEM SHALL BE INSTALLED BY CONTRACTOR.
  2. CONTRACTOR SHALL VERIFY ALL DIMENSIONS, HEIGHT, AND DIA/TH.
  3. CONTRACTOR IS RESPONSIBLE FOR INSTALLING SECURE TO THE STRUCTURE AND VERIFYING THE POSITIONING AS SHOWN ON THE INSTALLATION DOCUMENTS.
  4. CONTRACTOR SHALL VERIFY THE POSITIONING AS SHOWN ON THE INSTALLATION DOCUMENTS.
  5. CONTRACTOR SHALL VERIFY THE POSITIONING AS SHOWN ON THE INSTALLATION DOCUMENTS.
  6. CONTRACTOR SHALL VERIFY THE POSITIONING AS SHOWN ON THE INSTALLATION DOCUMENTS.
  7. CONTRACTOR SHALL VERIFY THE POSITIONING AS SHOWN ON THE INSTALLATION DOCUMENTS.
  8. CONTRACTOR SHALL VERIFY THE POSITIONING AS SHOWN ON THE INSTALLATION DOCUMENTS.
  9. CONTRACTOR SHALL VERIFY THE POSITIONING AS SHOWN ON THE INSTALLATION DOCUMENTS.
  10. CONTRACTOR SHALL VERIFY THE POSITIONING AS SHOWN ON THE INSTALLATION DOCUMENTS.
  11. CONTRACTOR SHALL VERIFY THE POSITIONING AS SHOWN ON THE INSTALLATION DOCUMENTS.
  12. CONTRACTOR SHALL VERIFY THE POSITIONING AS SHOWN ON THE INSTALLATION DOCUMENTS.
  13. CONTRACTOR SHALL VERIFY THE POSITIONING AS SHOWN ON THE INSTALLATION DOCUMENTS.

**SCALE N/A (2)**



**SCALE N/A (3)**

**J-HOOK DETAIL ON INSTALLATION # 4**



**Savely HA**  
Healthcare Architects  
ARCHITECTURE + PLANNING + DESIGN  
505 Technology Drive, Suite 175  
Menlo Park, CA 94025  
(650) 431-0071

PROJECT  
**ARROWHEAD REGIONAL MEDICAL CENTER**  
COLTON, CALIFORNIA 93224

HYBRID OPERATING ROOMS

NO.	DATE	REVISIONS
	2/17/2023	COMPLETED DRAWINGS
	2/24/2023	REVISED DRAWINGS
A.	7/27/2023	REVISED DRAWINGS



DRAWN BY	DATE
IC	02/20/2023
CHECKED BY	DATE
AL	02/20/2023
PROJECT NUMBER	
SH#	25526206
HCN #	8222148-30-00
SHEET TITLE	
FIRE PENETRATIONS / CABLE SUPPORT	

**NC-302**



**Savely Healthcare Architects**  
 ARCHITECTURE + PLANNING + DESIGN  
 695 Technology Drive, Suite 175  
 Irvine, CA 92618  
 (949) 431-0071

PROJECT  
**ARROWHEAD REGIONAL MEDICAL CENTER**  
 480 N. REDWOOD AVE  
 COLTON, CALIFORNIA 92324

HYBRID OPERATING ROOMS

NO. DATE REVISIONS  
 COMPLETED DRAWINGS 2/17/2023  
 REVISED DRAWINGS 3/24/2023  
 A REVISED DRAWINGS 7/27/2023



DRAWN BY: JSL  
 CHECKED BY: DATE: 02/21/2023

PROJECT NUMBER: 2023HC-06  
 SCALE: S222149-36-00

SHEET TITLE: RISER DIAGRAM / POWER CALCS

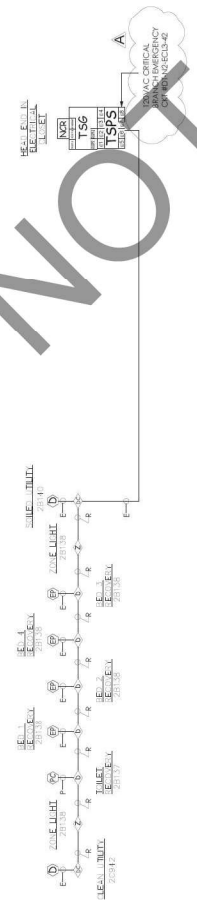
SHEET NUMBER  
**NC-303**

ARROWHEAD REGIONAL MEDICAL CENTER DATA CLOSET 2B110

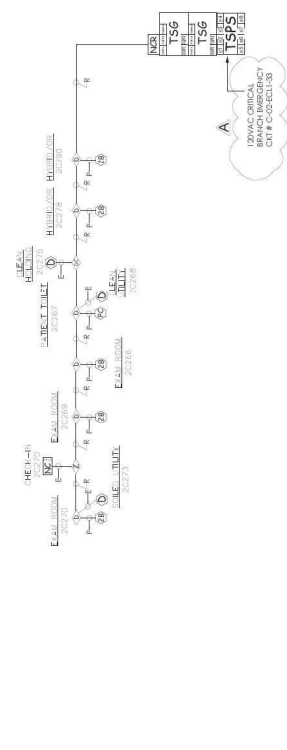
CABLE #	POWER SUPPLY #	J-BUS	ELECTRICAL CLOSET	ESTD. CURRENT	P.S #1	P.S #2	P.S #3	P.S #4	P.S #5
1			7092 GATEWAY	0.25	0.25				
1			PORT SWITCH	0.35	0.35				
1		1	PATIENT ROOM - CONSOLE	0.79	0.7900				
TOTALS				1.39	###	###	###	###	###
MAXIMUM LOAD PER POWER SUPPLY = 2.5 AMPS									

ARROWHEAD REGIONAL MEDICAL CENTER DATA ROOM 2C106

CABLE #	POWER SUPPLY #	J-BUS	DATA ROOM	ESTD. CURRENT	P.S #1	P.S #2	P.S #3	P.S #4	P.S #5
1			7092 GATEWAY	0.25	0.25				
1			PORT SWITCH	0.35	0.35				
1		1	PATIENT ROOM - CONSOLE	0.95	0.9500				
TOTALS				1.15	###	###	###	###	###
MAXIMUM LOAD PER POWER SUPPLY = 2.5 AMPS									



RISER DETAIL NORTH SIDE



RISER DETAIL SOUTH SIDE

NOT FOR BIDDING

SCALE: N/A 1

SCALE: N/A 2



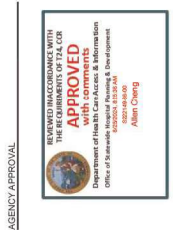
**Savely Healthcare Architects**  
ARCHITECTURE + PLANNING + DESIGN  
505 Technology Drive, Suite 175  
(949) 431-0071

**PROJECT:**  
**ARROWHEAD REGIONAL MEDICAL CENT**  
400 N. PEPPER AVE.  
COLTON, CALIFORNIA 92324

**HYBRID OPERATING ROOMS**

montebello Design Group, Inc.  
6675 Sierra Avenue, Suite 500  
Colton, CA 92324  
Tel: 951-862-5562  
www.montebellodesign.com

NO.	DATE	REVISIONS
1	03.11.2024	BACK-CHECK SUBMITTAL #2
2	05.06.2024	BACK-CHECK SUBMITTAL #3



DRAWN BY: [ ]  
CHECKED BY: [ ]  
DATE: 05.11.2024

PROJECT NUMBER: [ ]  
SHEET NUMBER: [ ]  
HCA #: S2214438-00

SHEET TITLE: FLOOR PATTERN & ACCENT WALL FINISH PLAN

SHEET NUMBER: ID300

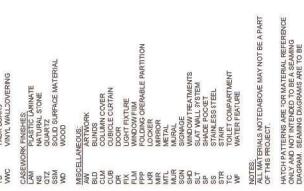
**GENERAL NOTES**

- FISH NOTES:**
1. FISH SPECIFICATIONS SHALL BE PROVIDED BY CONTRACTOR.
  2. FISH SPECIFICATIONS SHALL BE PROVIDED BY CONTRACTOR.
  3. FISH SPECIFICATIONS SHALL BE PROVIDED BY CONTRACTOR.
  4. FISH SPECIFICATIONS SHALL BE PROVIDED BY CONTRACTOR.
  5. FISH SPECIFICATIONS SHALL BE PROVIDED BY CONTRACTOR.
  6. FISH SPECIFICATIONS SHALL BE PROVIDED BY CONTRACTOR.

**LEGEND & ABBREVIATIONS**

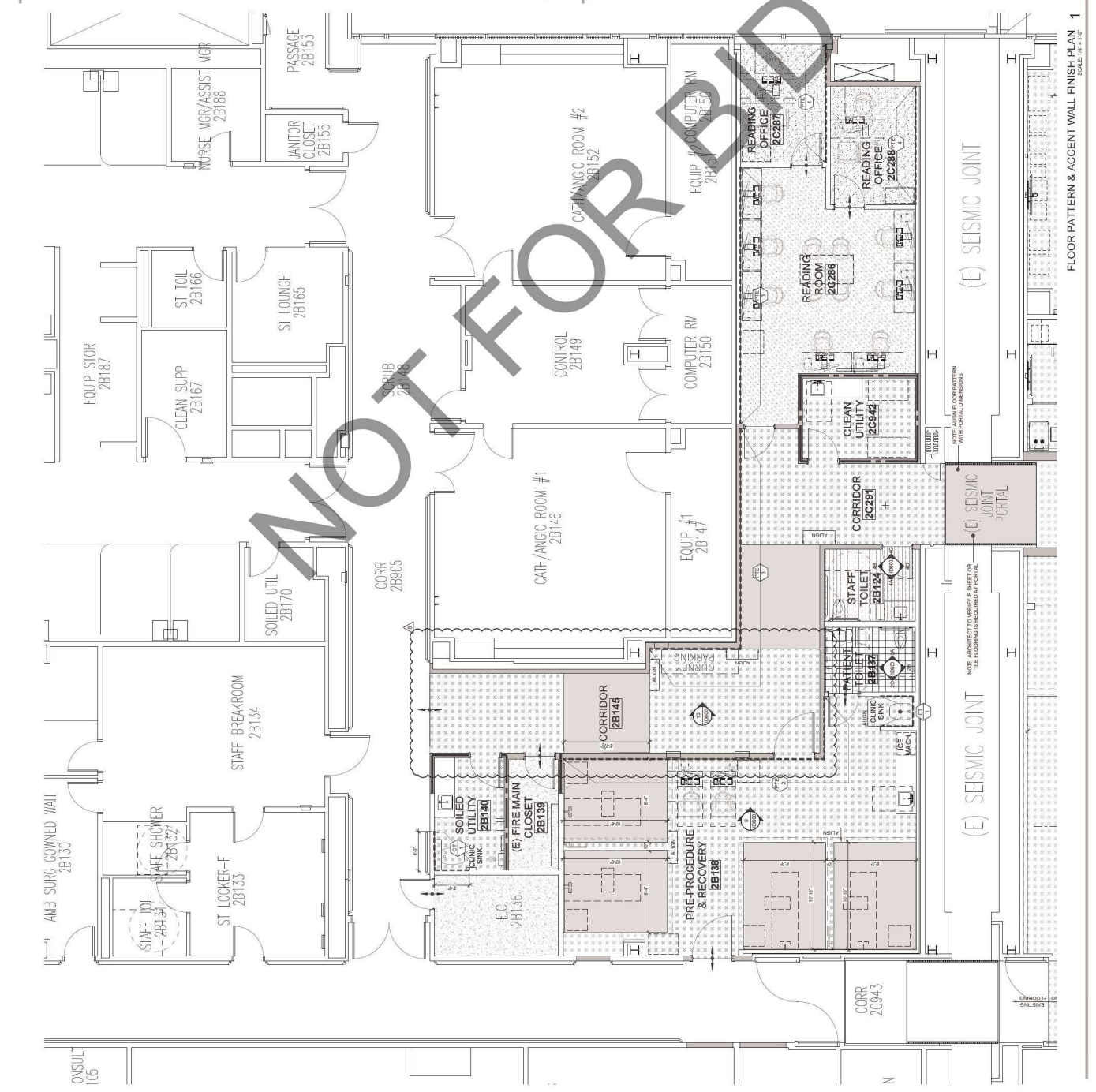
- FLOORING:**
1. POLISHED CONCRETE
  2. POLISHED CONCRETE
  3. POLISHED CONCRETE
  4. POLISHED CONCRETE
  5. POLISHED CONCRETE
  6. POLISHED CONCRETE
  7. POLISHED CONCRETE
  8. POLISHED CONCRETE
  9. POLISHED CONCRETE
  10. POLISHED CONCRETE
  11. POLISHED CONCRETE
  12. POLISHED CONCRETE
  13. POLISHED CONCRETE
  14. POLISHED CONCRETE
  15. POLISHED CONCRETE
  16. POLISHED CONCRETE
  17. POLISHED CONCRETE
  18. POLISHED CONCRETE
  19. POLISHED CONCRETE
  20. POLISHED CONCRETE
  21. POLISHED CONCRETE
  22. POLISHED CONCRETE
  23. POLISHED CONCRETE
  24. POLISHED CONCRETE
  25. POLISHED CONCRETE
  26. POLISHED CONCRETE
  27. POLISHED CONCRETE
  28. POLISHED CONCRETE
  29. POLISHED CONCRETE
  30. POLISHED CONCRETE
  31. POLISHED CONCRETE
  32. POLISHED CONCRETE
  33. POLISHED CONCRETE
  34. POLISHED CONCRETE
  35. POLISHED CONCRETE
  36. POLISHED CONCRETE
  37. POLISHED CONCRETE
  38. POLISHED CONCRETE
  39. POLISHED CONCRETE
  40. POLISHED CONCRETE
  41. POLISHED CONCRETE
  42. POLISHED CONCRETE
  43. POLISHED CONCRETE
  44. POLISHED CONCRETE
  45. POLISHED CONCRETE
  46. POLISHED CONCRETE
  47. POLISHED CONCRETE
  48. POLISHED CONCRETE
  49. POLISHED CONCRETE
  50. POLISHED CONCRETE

**FLOORING LEGEND**



**GENERAL NOTES**

- GENERAL NOTES:**
1. FLOOR FINISHES SHALL BE SMOOTH, WATERPROOF AND DURABLE.
  2. FLOOR FINISHES SHALL BE SMOOTH, WATERPROOF AND DURABLE.
  3. FLOOR FINISHES SHALL BE SMOOTH, WATERPROOF AND DURABLE.
  4. FLOOR FINISHES SHALL BE SMOOTH, WATERPROOF AND DURABLE.
  5. FLOOR FINISHES SHALL BE SMOOTH, WATERPROOF AND DURABLE.
  6. FLOOR FINISHES SHALL BE SMOOTH, WATERPROOF AND DURABLE.
  7. FLOOR FINISHES SHALL BE SMOOTH, WATERPROOF AND DURABLE.
  8. FLOOR FINISHES SHALL BE SMOOTH, WATERPROOF AND DURABLE.
  9. FLOOR FINISHES SHALL BE SMOOTH, WATERPROOF AND DURABLE.
  10. FLOOR FINISHES SHALL BE SMOOTH, WATERPROOF AND DURABLE.
  11. FLOOR FINISHES SHALL BE SMOOTH, WATERPROOF AND DURABLE.
  12. FLOOR FINISHES SHALL BE SMOOTH, WATERPROOF AND DURABLE.
  13. FLOOR FINISHES SHALL BE SMOOTH, WATERPROOF AND DURABLE.
  14. FLOOR FINISHES SHALL BE SMOOTH, WATERPROOF AND DURABLE.
  15. FLOOR FINISHES SHALL BE SMOOTH, WATERPROOF AND DURABLE.
  16. FLOOR FINISHES SHALL BE SMOOTH, WATERPROOF AND DURABLE.
  17. FLOOR FINISHES SHALL BE SMOOTH, WATERPROOF AND DURABLE.
  18. FLOOR FINISHES SHALL BE SMOOTH, WATERPROOF AND DURABLE.
  19. FLOOR FINISHES SHALL BE SMOOTH, WATERPROOF AND DURABLE.
  20. FLOOR FINISHES SHALL BE SMOOTH, WATERPROOF AND DURABLE.
  21. FLOOR FINISHES SHALL BE SMOOTH, WATERPROOF AND DURABLE.
  22. FLOOR FINISHES SHALL BE SMOOTH, WATERPROOF AND DURABLE.
  23. FLOOR FINISHES SHALL BE SMOOTH, WATERPROOF AND DURABLE.
  24. FLOOR FINISHES SHALL BE SMOOTH, WATERPROOF AND DURABLE.
  25. FLOOR FINISHES SHALL BE SMOOTH, WATERPROOF AND DURABLE.
  26. FLOOR FINISHES SHALL BE SMOOTH, WATERPROOF AND DURABLE.
  27. FLOOR FINISHES SHALL BE SMOOTH, WATERPROOF AND DURABLE.
  28. FLOOR FINISHES SHALL BE SMOOTH, WATERPROOF AND DURABLE.
  29. FLOOR FINISHES SHALL BE SMOOTH, WATERPROOF AND DURABLE.
  30. FLOOR FINISHES SHALL BE SMOOTH, WATERPROOF AND DURABLE.
  31. FLOOR FINISHES SHALL BE SMOOTH, WATERPROOF AND DURABLE.
  32. FLOOR FINISHES SHALL BE SMOOTH, WATERPROOF AND DURABLE.
  33. FLOOR FINISHES SHALL BE SMOOTH, WATERPROOF AND DURABLE.
  34. FLOOR FINISHES SHALL BE SMOOTH, WATERPROOF AND DURABLE.
  35. FLOOR FINISHES SHALL BE SMOOTH, WATERPROOF AND DURABLE.
  36. FLOOR FINISHES SHALL BE SMOOTH, WATERPROOF AND DURABLE.
  37. FLOOR FINISHES SHALL BE SMOOTH, WATERPROOF AND DURABLE.
  38. FLOOR FINISHES SHALL BE SMOOTH, WATERPROOF AND DURABLE.
  39. FLOOR FINISHES SHALL BE SMOOTH, WATERPROOF AND DURABLE.
  40. FLOOR FINISHES SHALL BE SMOOTH, WATERPROOF AND DURABLE.
  41. FLOOR FINISHES SHALL BE SMOOTH, WATERPROOF AND DURABLE.
  42. FLOOR FINISHES SHALL BE SMOOTH, WATERPROOF AND DURABLE.
  43. FLOOR FINISHES SHALL BE SMOOTH, WATERPROOF AND DURABLE.
  44. FLOOR FINISHES SHALL BE SMOOTH, WATERPROOF AND DURABLE.
  45. FLOOR FINISHES SHALL BE SMOOTH, WATERPROOF AND DURABLE.
  46. FLOOR FINISHES SHALL BE SMOOTH, WATERPROOF AND DURABLE.
  47. FLOOR FINISHES SHALL BE SMOOTH, WATERPROOF AND DURABLE.
  48. FLOOR FINISHES SHALL BE SMOOTH, WATERPROOF AND DURABLE.
  49. FLOOR FINISHES SHALL BE SMOOTH, WATERPROOF AND DURABLE.
  50. FLOOR FINISHES SHALL BE SMOOTH, WATERPROOF AND DURABLE.



(E) SEISMIC JOINT

(E) SEISMIC JOINT

(E) SEISMIC JOINT

(E) SEISMIC JOINT

FLOOR PATTERN & ACCENT WALL FINISH PLAN  
SCALE: 1/4" = 1'-0"



**GENERAL NOTES**

- NOTE: FINISHES NOTED ABOVE MAY NOT BE A PART OF THIS PROJECT. CONTRACTOR FURNISHED.
- SEE SPECIFICATIONS FOR FINISHES AND SECTION 09000 FOR FINISH SCHEDULE.
- APPLICABLE CODE REQUIREMENTS.
- APPLICABLE CODE REQUIREMENTS.

**FLOORING & ABBREVIATIONS**

- FLOORING NOTES:**
- FLOORING SHALL BE AS SHOWN ON DRAWINGS.
  - SEE SPECIFICATIONS FOR FINISHES AND SECTION 09000 FOR FINISH SCHEDULE.
  - APPLICABLE CODE REQUIREMENTS.
  - APPLICABLE CODE REQUIREMENTS.
- FLOORING ABBREVIATIONS:**
- CONC-1: POLISHED CONCRETE
  - TS-1: TYPICAL
  - SMV-1: STAIN RESISTANT VENEER
  - SMV-2: STAIN RESISTANT VENEER
  - SMV-3: STAIN RESISTANT VENEER
  - CPT-1: CERAMIC TILE
  - PPT-1: POLISHED PORCELAIN TILE
  - CONC-1: POLISHED CONCRETE
  - TS-1: TYPICAL

**FLOORING LEGEND**

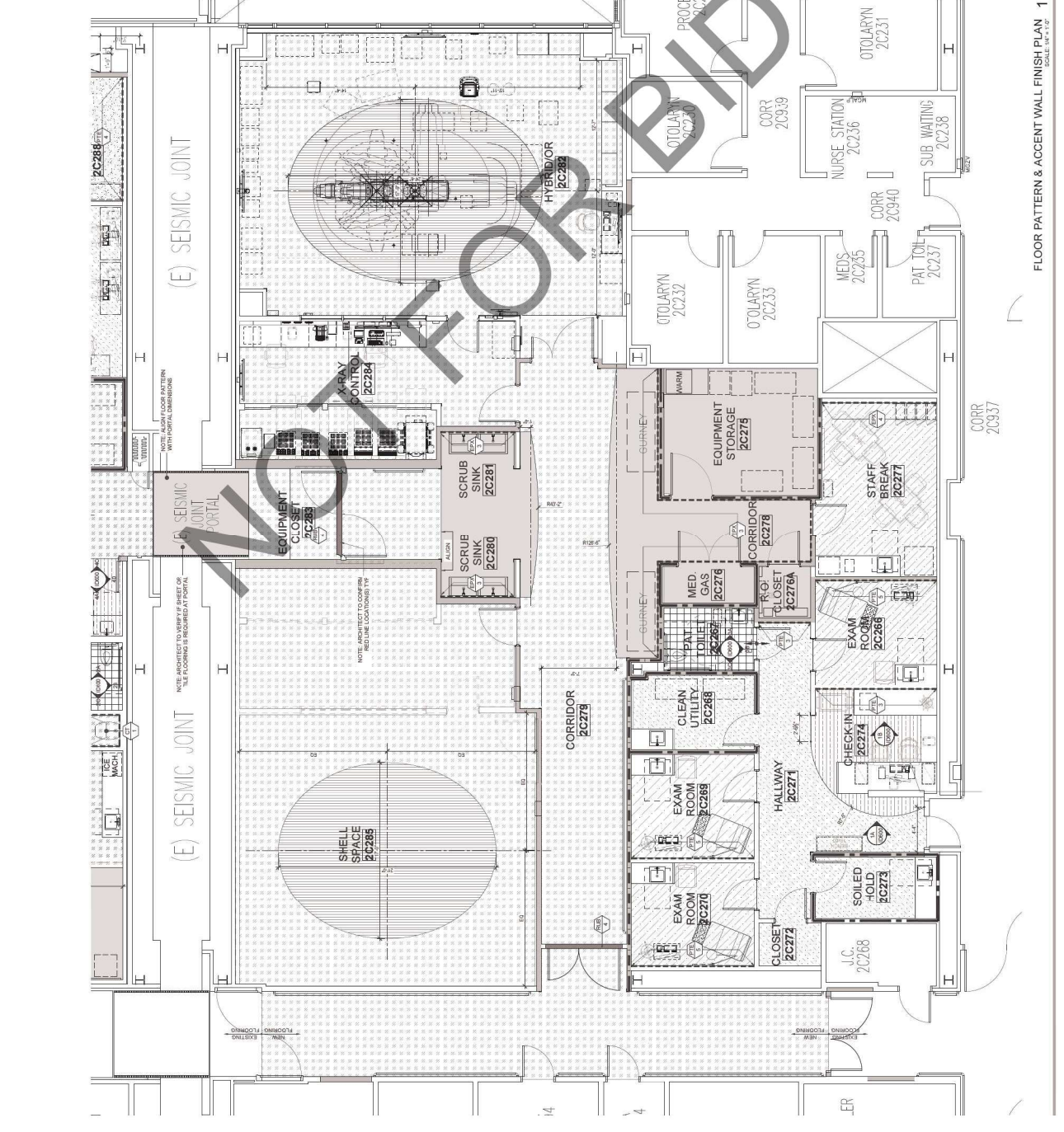


NOTE: FINISHES NOTED ABOVE MAY NOT BE A PART OF THIS PROJECT. CONTRACTOR FURNISHED.

SEE SPECIFICATIONS FOR FINISHES AND SECTION 09000 FOR FINISH SCHEDULE.

APPLICABLE CODE REQUIREMENTS.

APPLICABLE CODE REQUIREMENTS.



**FLOOR PATTERN & ACCENT WALL FINISH PLAN**  
SCALE: 1/4" = 1'-0"





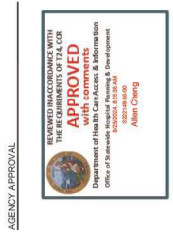
**Savely Healthcare Architects**  
 ARCHITECTURE + PLANNING + DESIGN  
 505 Technology Drive, Suite 175  
 Colton, CA 92316  
 (949) 431-8071

**PROJECT**  
**ARROWHEAD REGIONAL MEDICAL CENT**  
 400 N. PEPPER AVE.  
 COLTON, CALIFORNIA 92324

**HYBRID OPERATING ROOMS**

montebello *Design* group, inc.  
 6072 SANTA MONICA BLVD SUITE 5000  
 IRVINE, CA 92618  
 TEL: 949-432-5662  
 FAX: 949-432-5665  
 WWW.MONTBELLODESIGN.COM  
 REG. ARCHITECT #10010

NO.	DATE	REVISIONS
1	03.11.2024	BACK-CHECK SUBMITTAL #2
2	05.06.2024	BACK-CHECK SUBMITTAL #3



DRAWN BY	CL	CHECKED BY	DATE
PROJECT NUMBER	08		03.11.2024
HCA #	S22214336-00		
SHEET TITLE	REFLECTED CEILING PLAN AREA A		
SHEET NUMBER	ID500		

**GENERAL NOTES**

- FISH NOTES:**
- SEE SPECIFICATIONS FOR CONTRACTOR FURNISHED.
  - SEE SPECIFICATIONS FOR CONTRACTOR SUPPLIED OR FURNISHED.
  - APPLICABLE CODE REQUIREMENTS.
- FLOORING NOTES:**
- PATTERN FOR ROOMS WITH SINGLE FLOORING.
  - SEE SPECIFICATIONS FOR CONTRACTOR FURNISHED.
  - SEE SPECIFICATIONS FOR CONTRACTOR SUPPLIED OR FURNISHED.
  - SEE SPECIFICATIONS FOR CONTRACTOR SUPPLIED OR FURNISHED.
  - SEE SPECIFICATIONS FOR CONTRACTOR SUPPLIED OR FURNISHED.
  - SEE SPECIFICATIONS FOR CONTRACTOR SUPPLIED OR FURNISHED.

- FINISHING FLOOR ABBREVIATIONS:**
- WALL/CEILING:**
- CBT CONCRETE TILE BASE
  - CTB CONCRETE TILE BASE
  - CTD CONCRETE TILE BASE
  - CTE CONCRETE TILE BASE
  - CTF CONCRETE TILE BASE
  - CTG CONCRETE TILE BASE
  - CTH CONCRETE TILE BASE
  - CTI CONCRETE TILE BASE
  - CTJ CONCRETE TILE BASE
  - CTK CONCRETE TILE BASE
  - CTL CONCRETE TILE BASE
  - CTM CONCRETE TILE BASE
  - CTN CONCRETE TILE BASE
  - CTO CONCRETE TILE BASE
  - CTP CONCRETE TILE BASE
  - CTQ CONCRETE TILE BASE
  - CTR CONCRETE TILE BASE
  - CTS CONCRETE TILE BASE
  - CTT CONCRETE TILE BASE
  - CTU CONCRETE TILE BASE
  - CTV CONCRETE TILE BASE
  - CTW CONCRETE TILE BASE
  - CTX CONCRETE TILE BASE
  - CTY CONCRETE TILE BASE
  - CTZ CONCRETE TILE BASE

- FLOORING:**
- ACR ACETYLENE
  - ALU ALUMINUM
  - AMM ALUMINUM METAL
  - ANM ALUMINUM METAL
  - ANP ALUMINUM METAL
  - ANR ALUMINUM METAL
  - ANU ALUMINUM METAL
  - ANV ALUMINUM METAL
  - ANW ALUMINUM METAL
  - ANX ALUMINUM METAL
  - ANY ALUMINUM METAL
  - ANZ ALUMINUM METAL
  - AOB ALUMINUM METAL
  - AOC ALUMINUM METAL
  - AOD ALUMINUM METAL
  - AOE ALUMINUM METAL
  - AOF ALUMINUM METAL
  - AOG ALUMINUM METAL
  - AOH ALUMINUM METAL
  - AOI ALUMINUM METAL
  - AOJ ALUMINUM METAL
  - AOK ALUMINUM METAL
  - AOL ALUMINUM METAL
  - AOM ALUMINUM METAL
  - AON ALUMINUM METAL
  - AOP ALUMINUM METAL
  - AOQ ALUMINUM METAL
  - AOR ALUMINUM METAL
  - AOS ALUMINUM METAL
  - AOT ALUMINUM METAL
  - AOU ALUMINUM METAL
  - AOV ALUMINUM METAL
  - AOW ALUMINUM METAL
  - AOX ALUMINUM METAL
  - AOY ALUMINUM METAL
  - AOZ ALUMINUM METAL

- ACROUSTICAL CEILING TILE:**
- ACT-1
  - ACT-2
  - ACT-3
  - ACT-4
  - ACT-5
  - ACT-6
  - ACT-7
  - ACT-8
  - ACT-9
  - ACT-10
  - ACT-11
  - ACT-12
  - ACT-13
  - ACT-14
  - ACT-15
  - ACT-16
  - ACT-17
  - ACT-18
  - ACT-19
  - ACT-20

- PROFESSIONAL SEALS:**
- ASB ARCHITECT
  - ASD ARCHITECT
  - ASE ARCHITECT
  - ASG ARCHITECT
  - ASH ARCHITECT
  - ASJ ARCHITECT
  - ASK ARCHITECT
  - ASL ARCHITECT
  - ASM ARCHITECT
  - ASN ARCHITECT
  - ASO ARCHITECT
  - ASP ARCHITECT
  - ASQ ARCHITECT
  - ASR ARCHITECT
  - ASS ARCHITECT
  - AST ARCHITECT
  - ASU ARCHITECT
  - ASV ARCHITECT
  - ASW ARCHITECT
  - ASX ARCHITECT
  - ASY ARCHITECT
  - ASZ ARCHITECT

**LEGEND & ABBREVIATIONS**

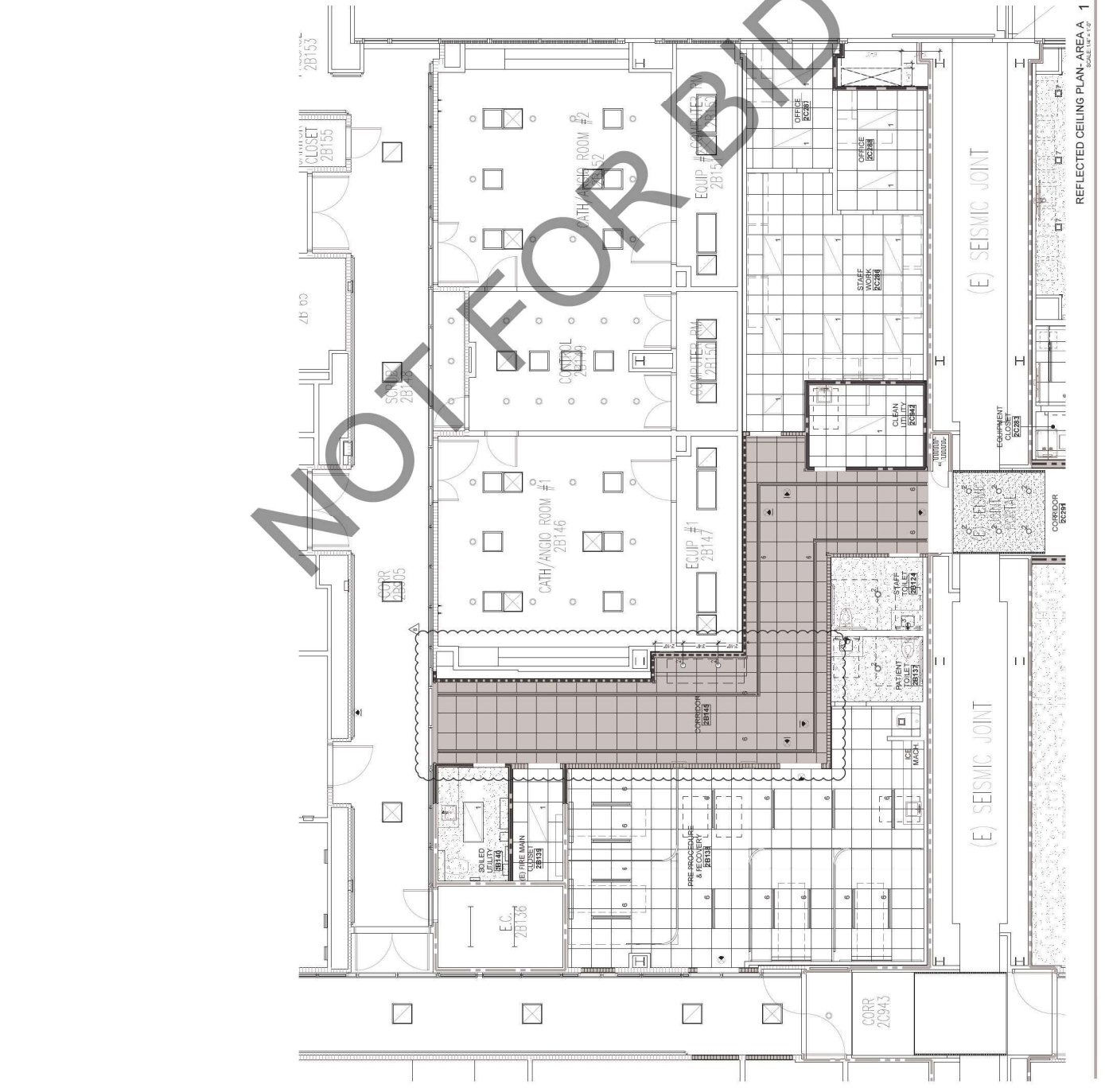
- FIX-1** [Symbol]
- FIX-2** [Symbol]
- FIX-3** [Symbol]
- FIX-4** [Symbol]
- FIX-5** [Symbol]
- FIX-6** [Symbol]
- ACT-2** [Symbol]

- ACROUSTICAL CEILING IN THIS AREA SHALL BE WITHSTANDING CLEANING WITH ANTI-MOLD AND BACTERIAL GROWTH. IT SHALL BE GASEATED OR VENTED TO THE OUTSIDE AT A RATE OF AT LEAST ONE POUND PER SQUARE FOOT.**

- FINISHING FLOOR ABBREVIATIONS:**
- ACR ACETYLENE
  - ALU ALUMINUM
  - AMM ALUMINUM METAL
  - ANM ALUMINUM METAL
  - ANP ALUMINUM METAL
  - ANR ALUMINUM METAL
  - ANU ALUMINUM METAL
  - ANV ALUMINUM METAL
  - ANW ALUMINUM METAL
  - ANX ALUMINUM METAL
  - ANY ALUMINUM METAL
  - ANZ ALUMINUM METAL
  - AOB ALUMINUM METAL
  - AOC ALUMINUM METAL
  - AOD ALUMINUM METAL
  - AOE ALUMINUM METAL
  - AOF ALUMINUM METAL
  - AOG ALUMINUM METAL
  - AOH ALUMINUM METAL
  - AOI ALUMINUM METAL
  - AOJ ALUMINUM METAL
  - AOK ALUMINUM METAL
  - AOL ALUMINUM METAL
  - AOM ALUMINUM METAL
  - AON ALUMINUM METAL
  - AOP ALUMINUM METAL
  - AOQ ALUMINUM METAL
  - AOR ALUMINUM METAL
  - AOS ALUMINUM METAL
  - AOT ALUMINUM METAL
  - AOU ALUMINUM METAL
  - AOV ALUMINUM METAL
  - AOW ALUMINUM METAL
  - AOX ALUMINUM METAL
  - AOY ALUMINUM METAL
  - AOZ ALUMINUM METAL

- ACROUSTICAL CEILING TILE:**
- ACT-1
  - ACT-2
  - ACT-3
  - ACT-4
  - ACT-5
  - ACT-6
  - ACT-7
  - ACT-8
  - ACT-9
  - ACT-10
  - ACT-11
  - ACT-12
  - ACT-13
  - ACT-14
  - ACT-15
  - ACT-16
  - ACT-17
  - ACT-18
  - ACT-19
  - ACT-20

- PROFESSIONAL SEALS:**
- ASB ARCHITECT
  - ASD ARCHITECT
  - ASE ARCHITECT
  - ASG ARCHITECT
  - ASH ARCHITECT
  - ASJ ARCHITECT
  - ASK ARCHITECT
  - ASL ARCHITECT
  - ASM ARCHITECT
  - ASN ARCHITECT
  - ASO ARCHITECT
  - ASP ARCHITECT
  - ASQ ARCHITECT
  - ASR ARCHITECT
  - ASS ARCHITECT
  - AST ARCHITECT
  - ASU ARCHITECT
  - ASV ARCHITECT
  - ASW ARCHITECT
  - ASX ARCHITECT
  - ASY ARCHITECT
  - ASZ ARCHITECT



REFLECTED CEILING PLAN- AREA A 1  
 SCALE: 1/8" = 1'-0"

ARCHITECT  
**S+HA**  
Savely Healthcare Architects  
ARCHITECTURE + PLANNING + DESIGN  
505 Technology Drive, Suite 175  
Costa Mesa, CA 92626  
(949) 431-8071

PROJECT  
**ARROWHEAD REGIONAL MEDICAL CENT**  
400 N. PEPPER AVE.  
COLTON, CALIFORNIA 92324  
**HYBRID OPERATING ROOMS**

montebello *Design Group*, Inc.  
6673 Santa Anita Road, Suite 5000  
Riverside, CA 92504  
TEL: 951.385.8600  
WWW.MDGROUP.COM  
PROJECT NO. 1703180600

NO. DATE REVISIONS  
1 03.11.2024 BACK-CHECK SUBMITTAL #2  
2 05.06.2024 BACK-CHECK SUBMITTAL #3

PROFESSIONAL SEALS  
AGENCY APPROVAL  
APPROVED FOR THE REQUIREMENTS OF THE CALIFORNIA BOARD OF ARCHITECTURE WITH THE REQUIREMENTS OF THE CALIFORNIA BOARD OF EXAMINERS OF TITLE CSES  
DIRECTOR of Health 31, California State Architect & Information System  
Office of Statewide Regional Planning & Development  
3000-08-008  
Alison Cheng



DRAWN BY: [ ] CHECKED BY: [ ] DATE: [ ]  
PROJECT NUMBER: [ ]  
SHEET NUMBER: [ ]  
SCALE: [ ]  
HCA # [ ] S227145.38-00  
SHEET TITLE: [ ]  
REFLECTED CEILING PLAN AREA B  
SHEET NUMBER: [ ]

ID501

GENERAL NOTES

- FURNISH NOTES:  
1. ALL FINISHES SHALL BE CONTRACTOR FURNISHED.  
2. FINISHES SHALL BE CONTRACTOR SUPPLIED FOR FRESH SPECIFICATIONS.  
3. FINISHES SHALL BE CONTRACTOR SUPPLIED FOR FRESH SPECIFICATIONS.  
4. FINISHES SHALL BE CONTRACTOR SUPPLIED FOR FRESH SPECIFICATIONS.  
5. FINISHES SHALL BE CONTRACTOR SUPPLIED FOR FRESH SPECIFICATIONS.  
6. FINISHES SHALL BE CONTRACTOR SUPPLIED FOR FRESH SPECIFICATIONS.

- FLOORING NOTES:  
1. FLOORING SHALL BE CONTRACTOR FURNISHED AND INSTALLED BY CONTRACTOR.  
2. FLOORING SHALL BE CONTRACTOR FURNISHED AND INSTALLED BY CONTRACTOR.  
3. FLOORING SHALL BE CONTRACTOR FURNISHED AND INSTALLED BY CONTRACTOR.  
4. FLOORING SHALL BE CONTRACTOR FURNISHED AND INSTALLED BY CONTRACTOR.  
5. FLOORING SHALL BE CONTRACTOR FURNISHED AND INSTALLED BY CONTRACTOR.

WALLS AND PARTITIONS:  
1. WALLS SHALL BE CONTRACTOR FURNISHED AND INSTALLED BY CONTRACTOR.  
2. WALLS SHALL BE CONTRACTOR FURNISHED AND INSTALLED BY CONTRACTOR.  
3. WALLS SHALL BE CONTRACTOR FURNISHED AND INSTALLED BY CONTRACTOR.  
4. WALLS SHALL BE CONTRACTOR FURNISHED AND INSTALLED BY CONTRACTOR.

CEILING NOTES:  
1. CEILING SHALL BE CONTRACTOR FURNISHED AND INSTALLED BY CONTRACTOR.  
2. CEILING SHALL BE CONTRACTOR FURNISHED AND INSTALLED BY CONTRACTOR.  
3. CEILING SHALL BE CONTRACTOR FURNISHED AND INSTALLED BY CONTRACTOR.  
4. CEILING SHALL BE CONTRACTOR FURNISHED AND INSTALLED BY CONTRACTOR.

NOTE:  
1. ALL FINISHES SHALL BE CONTRACTOR FURNISHED AND INSTALLED BY CONTRACTOR.  
2. ALL FINISHES SHALL BE CONTRACTOR FURNISHED AND INSTALLED BY CONTRACTOR.  
3. ALL FINISHES SHALL BE CONTRACTOR FURNISHED AND INSTALLED BY CONTRACTOR.

GENERAL NOTES

FURNISH NOTES:  
1. ALL FINISHES SHALL BE CONTRACTOR FURNISHED AND INSTALLED BY CONTRACTOR.  
2. ALL FINISHES SHALL BE CONTRACTOR FURNISHED AND INSTALLED BY CONTRACTOR.  
3. ALL FINISHES SHALL BE CONTRACTOR FURNISHED AND INSTALLED BY CONTRACTOR.

GENERAL NOTES

FURNISH NOTES:  
1. ALL FINISHES SHALL BE CONTRACTOR FURNISHED AND INSTALLED BY CONTRACTOR.  
2. ALL FINISHES SHALL BE CONTRACTOR FURNISHED AND INSTALLED BY CONTRACTOR.  
3. ALL FINISHES SHALL BE CONTRACTOR FURNISHED AND INSTALLED BY CONTRACTOR.

GENERAL NOTES

FURNISH NOTES:  
1. ALL FINISHES SHALL BE CONTRACTOR FURNISHED AND INSTALLED BY CONTRACTOR.  
2. ALL FINISHES SHALL BE CONTRACTOR FURNISHED AND INSTALLED BY CONTRACTOR.  
3. ALL FINISHES SHALL BE CONTRACTOR FURNISHED AND INSTALLED BY CONTRACTOR.

GENERAL NOTES

FURNISH NOTES:  
1. ALL FINISHES SHALL BE CONTRACTOR FURNISHED AND INSTALLED BY CONTRACTOR.  
2. ALL FINISHES SHALL BE CONTRACTOR FURNISHED AND INSTALLED BY CONTRACTOR.  
3. ALL FINISHES SHALL BE CONTRACTOR FURNISHED AND INSTALLED BY CONTRACTOR.

GENERAL NOTES

FURNISH NOTES:  
1. ALL FINISHES SHALL BE CONTRACTOR FURNISHED AND INSTALLED BY CONTRACTOR.  
2. ALL FINISHES SHALL BE CONTRACTOR FURNISHED AND INSTALLED BY CONTRACTOR.  
3. ALL FINISHES SHALL BE CONTRACTOR FURNISHED AND INSTALLED BY CONTRACTOR.

GENERAL NOTES

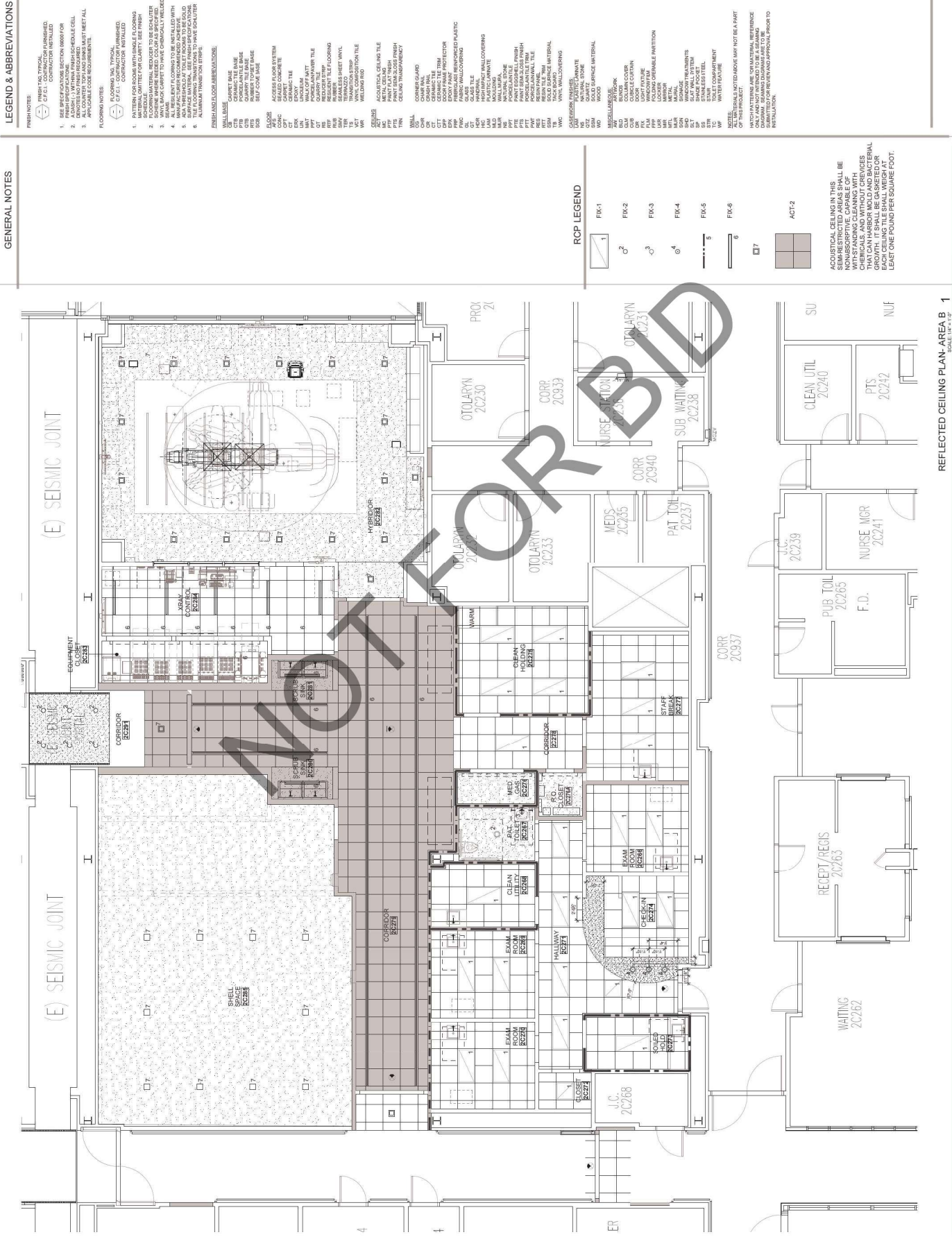
FURNISH NOTES:  
1. ALL FINISHES SHALL BE CONTRACTOR FURNISHED AND INSTALLED BY CONTRACTOR.  
2. ALL FINISHES SHALL BE CONTRACTOR FURNISHED AND INSTALLED BY CONTRACTOR.  
3. ALL FINISHES SHALL BE CONTRACTOR FURNISHED AND INSTALLED BY CONTRACTOR.

GENERAL NOTES

FURNISH NOTES:  
1. ALL FINISHES SHALL BE CONTRACTOR FURNISHED AND INSTALLED BY CONTRACTOR.  
2. ALL FINISHES SHALL BE CONTRACTOR FURNISHED AND INSTALLED BY CONTRACTOR.  
3. ALL FINISHES SHALL BE CONTRACTOR FURNISHED AND INSTALLED BY CONTRACTOR.

GENERAL NOTES

FURNISH NOTES:  
1. ALL FINISHES SHALL BE CONTRACTOR FURNISHED AND INSTALLED BY CONTRACTOR.  
2. ALL FINISHES SHALL BE CONTRACTOR FURNISHED AND INSTALLED BY CONTRACTOR.  
3. ALL FINISHES SHALL BE CONTRACTOR FURNISHED AND INSTALLED BY CONTRACTOR.



GENERAL NOTES

FURNISH NOTES:  
1. ALL FINISHES SHALL BE CONTRACTOR FURNISHED AND INSTALLED BY CONTRACTOR.  
2. ALL FINISHES SHALL BE CONTRACTOR FURNISHED AND INSTALLED BY CONTRACTOR.  
3. ALL FINISHES SHALL BE CONTRACTOR FURNISHED AND INSTALLED BY CONTRACTOR.

GENERAL NOTES

FURNISH NOTES:  
1. ALL FINISHES SHALL BE CONTRACTOR FURNISHED AND INSTALLED BY CONTRACTOR.  
2. ALL FINISHES SHALL BE CONTRACTOR FURNISHED AND INSTALLED BY CONTRACTOR.  
3. ALL FINISHES SHALL BE CONTRACTOR FURNISHED AND INSTALLED BY CONTRACTOR.

GENERAL NOTES

FURNISH NOTES:  
1. ALL FINISHES SHALL BE CONTRACTOR FURNISHED AND INSTALLED BY CONTRACTOR.  
2. ALL FINISHES SHALL BE CONTRACTOR FURNISHED AND INSTALLED BY CONTRACTOR.  
3. ALL FINISHES SHALL BE CONTRACTOR FURNISHED AND INSTALLED BY CONTRACTOR.

GENERAL NOTES

FURNISH NOTES:  
1. ALL FINISHES SHALL BE CONTRACTOR FURNISHED AND INSTALLED BY CONTRACTOR.  
2. ALL FINISHES SHALL BE CONTRACTOR FURNISHED AND INSTALLED BY CONTRACTOR.  
3. ALL FINISHES SHALL BE CONTRACTOR FURNISHED AND INSTALLED BY CONTRACTOR.

GENERAL NOTES

FURNISH NOTES:  
1. ALL FINISHES SHALL BE CONTRACTOR FURNISHED AND INSTALLED BY CONTRACTOR.  
2. ALL FINISHES SHALL BE CONTRACTOR FURNISHED AND INSTALLED BY CONTRACTOR.  
3. ALL FINISHES SHALL BE CONTRACTOR FURNISHED AND INSTALLED BY CONTRACTOR.

GENERAL NOTES

FURNISH NOTES:  
1. ALL FINISHES SHALL BE CONTRACTOR FURNISHED AND INSTALLED BY CONTRACTOR.  
2. ALL FINISHES SHALL BE CONTRACTOR FURNISHED AND INSTALLED BY CONTRACTOR.  
3. ALL FINISHES SHALL BE CONTRACTOR FURNISHED AND INSTALLED BY CONTRACTOR.

GENERAL NOTES

FURNISH NOTES:  
1. ALL FINISHES SHALL BE CONTRACTOR FURNISHED AND INSTALLED BY CONTRACTOR.  
2. ALL FINISHES SHALL BE CONTRACTOR FURNISHED AND INSTALLED BY CONTRACTOR.  
3. ALL FINISHES SHALL BE CONTRACTOR FURNISHED AND INSTALLED BY CONTRACTOR.

GENERAL NOTES

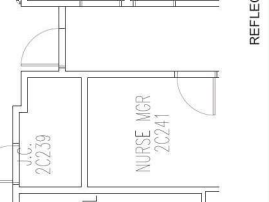
FURNISH NOTES:  
1. ALL FINISHES SHALL BE CONTRACTOR FURNISHED AND INSTALLED BY CONTRACTOR.  
2. ALL FINISHES SHALL BE CONTRACTOR FURNISHED AND INSTALLED BY CONTRACTOR.  
3. ALL FINISHES SHALL BE CONTRACTOR FURNISHED AND INSTALLED BY CONTRACTOR.

ACCOUSTICAL CEILING IN THIS SEMI-RESTRICTED AREAS SHALL BE WITH STANDING CLEANING WITH THIS POLYMER MODIFIED RESIN ACETAL GROWTH. IT SHALL BE CASHEE OR FLOORING TILE PER SQUARE FOOT. (SEE CONTRACT DOCUMENTS FOR FLOOR TO INSTALLATION.)

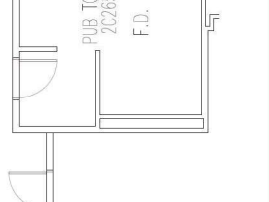
RCP LEGEND

1	FK-1
2	FK-2
3	FK-3
4	FK-4
5	FK-5
6	FK-6
7	ACT-2

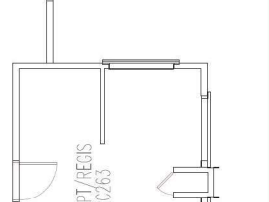
REFLECTED CEILING PLAN AREA B



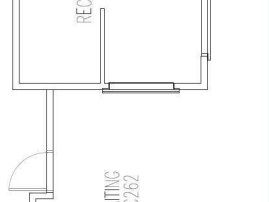
REFLECTED CEILING PLAN AREA B



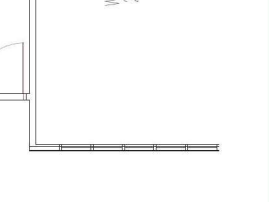
REFLECTED CEILING PLAN AREA B



REFLECTED CEILING PLAN AREA B

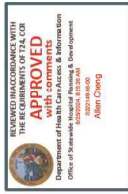


REFLECTED CEILING PLAN AREA B



REFLECTED CEILING PLAN AREA B





LEGEND & ABBREVIATIONS

- FINISH NOTES:
1. FINISH FLOOR TYPICAL
2. CONTRACTOR FURNISHED
3. SEE SPECIFICATIONS FOR FINISH
4. SEE SPECIFICATIONS FOR SECTION BOARD FOR
5. SEE SPECIFICATIONS FOR SCHEDULE CELL
6. SEE SPECIFICATIONS FOR SCHEDULE CELL
7. SEE SPECIFICATIONS FOR SCHEDULE CELL
8. SEE SPECIFICATIONS FOR SCHEDULE CELL
9. SEE SPECIFICATIONS FOR SCHEDULE CELL
10. SEE SPECIFICATIONS FOR SCHEDULE CELL

- FLOORING NOTES:
1. PATTERN FOR ROOMS WITH BRUSHED FLOORING
2. PATTERN FOR ROOMS WITH POLISHED FLOORING
3. PATTERN FOR ROOMS WITH POLISHED FLOORING
4. PATTERN FOR ROOMS WITH POLISHED FLOORING
5. PATTERN FOR ROOMS WITH POLISHED FLOORING
6. PATTERN FOR ROOMS WITH POLISHED FLOORING
7. PATTERN FOR ROOMS WITH POLISHED FLOORING
8. PATTERN FOR ROOMS WITH POLISHED FLOORING
9. PATTERN FOR ROOMS WITH POLISHED FLOORING
10. PATTERN FOR ROOMS WITH POLISHED FLOORING

- WALLS AND CEILING ABBREVIATIONS:
1. GYPSUM BOARD
2. GYPSUM BOARD
3. GYPSUM BOARD
4. GYPSUM BOARD
5. GYPSUM BOARD
6. GYPSUM BOARD
7. GYPSUM BOARD
8. GYPSUM BOARD
9. GYPSUM BOARD
10. GYPSUM BOARD

- FLOORING ABBREVIATIONS:
1. POLISHED CONCRETE
2. POLISHED CONCRETE
3. POLISHED CONCRETE
4. POLISHED CONCRETE
5. POLISHED CONCRETE
6. POLISHED CONCRETE
7. POLISHED CONCRETE
8. POLISHED CONCRETE
9. POLISHED CONCRETE
10. POLISHED CONCRETE

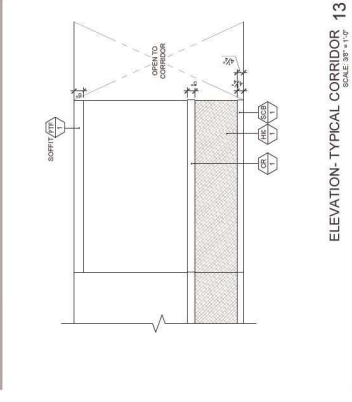
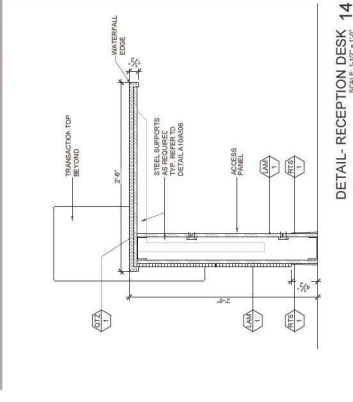
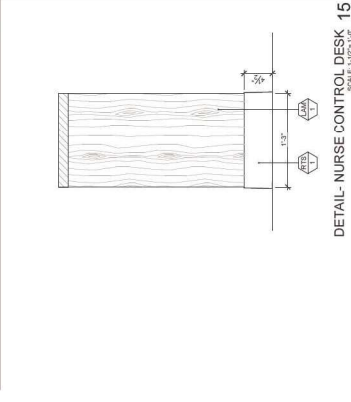
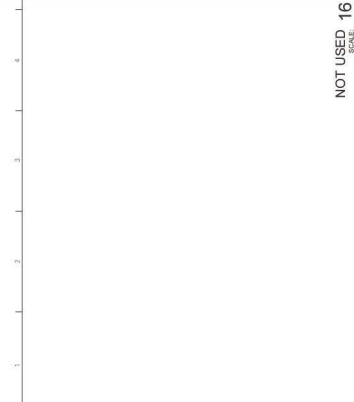
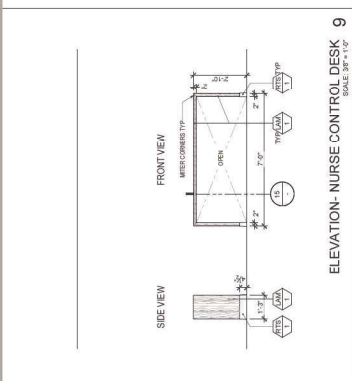
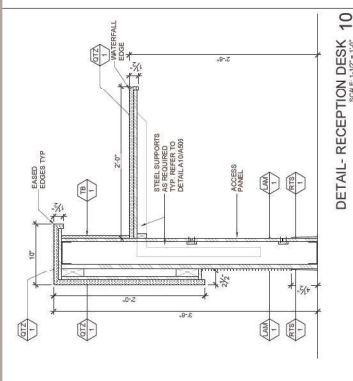
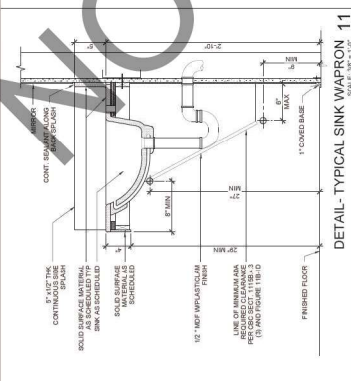
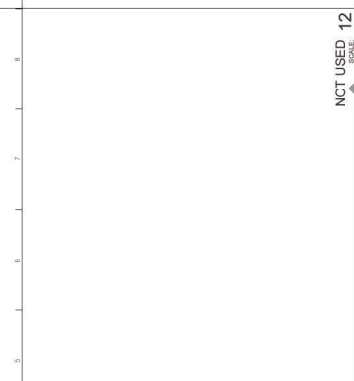
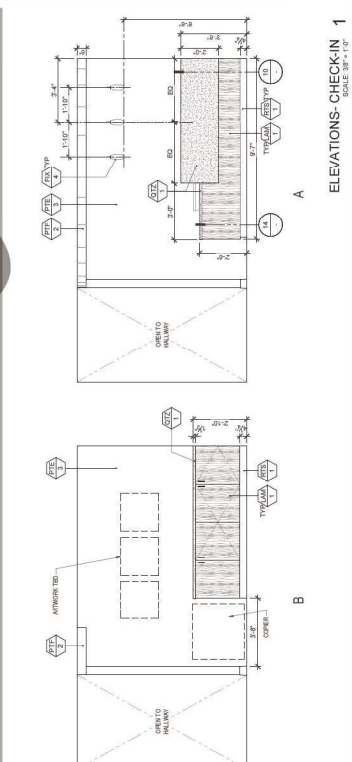
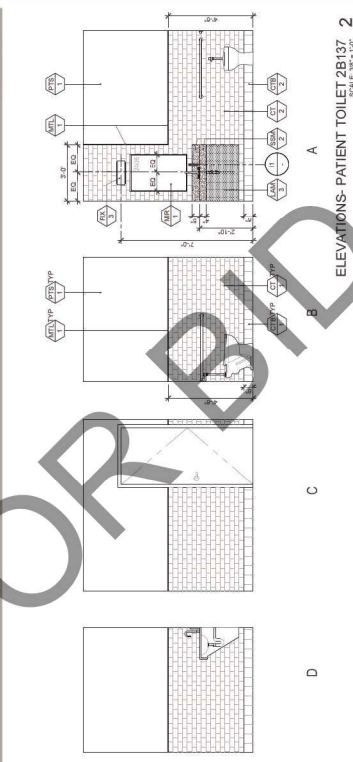
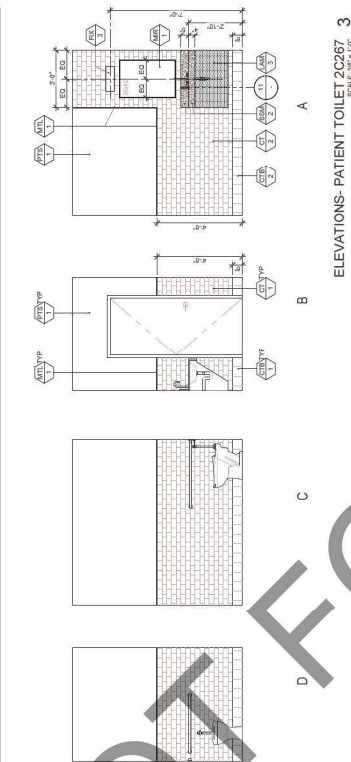
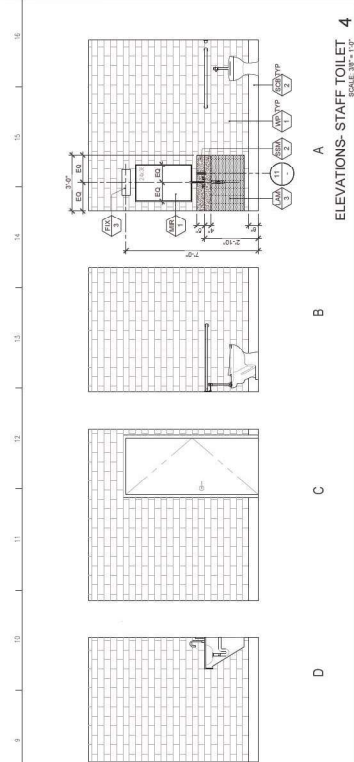
- WALLS AND CEILING ABBREVIATIONS:
1. GYPSUM BOARD
2. GYPSUM BOARD
3. GYPSUM BOARD
4. GYPSUM BOARD
5. GYPSUM BOARD
6. GYPSUM BOARD
7. GYPSUM BOARD
8. GYPSUM BOARD
9. GYPSUM BOARD
10. GYPSUM BOARD

- FLOORING ABBREVIATIONS:
1. POLISHED CONCRETE
2. POLISHED CONCRETE
3. POLISHED CONCRETE
4. POLISHED CONCRETE
5. POLISHED CONCRETE
6. POLISHED CONCRETE
7. POLISHED CONCRETE
8. POLISHED CONCRETE
9. POLISHED CONCRETE
10. POLISHED CONCRETE

- WALLS AND CEILING ABBREVIATIONS:
1. GYPSUM BOARD
2. GYPSUM BOARD
3. GYPSUM BOARD
4. GYPSUM BOARD
5. GYPSUM BOARD
6. GYPSUM BOARD
7. GYPSUM BOARD
8. GYPSUM BOARD
9. GYPSUM BOARD
10. GYPSUM BOARD

- FLOORING ABBREVIATIONS:
1. POLISHED CONCRETE
2. POLISHED CONCRETE
3. POLISHED CONCRETE
4. POLISHED CONCRETE
5. POLISHED CONCRETE
6. POLISHED CONCRETE
7. POLISHED CONCRETE
8. POLISHED CONCRETE
9. POLISHED CONCRETE
10. POLISHED CONCRETE

- WALLS AND CEILING ABBREVIATIONS:
1. GYPSUM BOARD
2. GYPSUM BOARD
3. GYPSUM BOARD
4. GYPSUM BOARD
5. GYPSUM BOARD
6. GYPSUM BOARD
7. GYPSUM BOARD
8. GYPSUM BOARD
9. GYPSUM BOARD
10. GYPSUM BOARD



NOT FOR BID

LEGEND & ABBREVIATIONS

- FINISH NOTES:**
- 1. FINISH FOR ROOMS WITH BRUSHED FLOORING
  - 2. FINISH SPECIFICATIONS SECTION 9000 FOR
  - 3. FINISH SPECIFICATIONS SECTION 9000 FOR
  - 4. FINISH SPECIFICATIONS SECTION 9000 FOR
  - 5. FINISH SPECIFICATIONS SECTION 9000 FOR
  - 6. FINISH SPECIFICATIONS SECTION 9000 FOR
  - 7. FINISH SPECIFICATIONS SECTION 9000 FOR
  - 8. FINISH SPECIFICATIONS SECTION 9000 FOR
  - 9. FINISH SPECIFICATIONS SECTION 9000 FOR
  - 10. FINISH SPECIFICATIONS SECTION 9000 FOR

INTERIOR ROOM FINISH SCHEDULE

ROOM #	ROOM NAME	FLOOR	WALLS	WANSKOOT	CEILING	CASEWORK	NOTES
2007	PATIENT ROOM	UBS.1	FTS-1	HTS-1	ACT-1	UBS.1	FTS-1, HTS-1, ACT-1
2008	COMMUNITY	UBS.1	FTS-1	HTS-1	ACT-1	UBS.1	FTS-1, HTS-1, ACT-1
2009	EXAM ROOM	UBS.1	FTS-1	HTS-1	ACT-1	UBS.1	FTS-1, HTS-1, ACT-1
2010	EXAM ROOM	UBS.1	FTS-1	HTS-1	ACT-1	UBS.1	FTS-1, HTS-1, ACT-1
2011	HALLWAY	UBS.1	FTS-1	HTS-1	ACT-1	UBS.1	FTS-1, HTS-1, ACT-1
2012	HALLWAY	UBS.1	FTS-1	HTS-1	ACT-1	UBS.1	FTS-1, HTS-1, ACT-1
2013	HALLWAY	UBS.1	FTS-1	HTS-1	ACT-1	UBS.1	FTS-1, HTS-1, ACT-1
2014	HALLWAY	UBS.1	FTS-1	HTS-1	ACT-1	UBS.1	FTS-1, HTS-1, ACT-1
2015	HALLWAY	UBS.1	FTS-1	HTS-1	ACT-1	UBS.1	FTS-1, HTS-1, ACT-1
2016	HALLWAY	UBS.1	FTS-1	HTS-1	ACT-1	UBS.1	FTS-1, HTS-1, ACT-1
2017	HALLWAY	UBS.1	FTS-1	HTS-1	ACT-1	UBS.1	FTS-1, HTS-1, ACT-1
2018	HALLWAY	UBS.1	FTS-1	HTS-1	ACT-1	UBS.1	FTS-1, HTS-1, ACT-1
2019	HALLWAY	UBS.1	FTS-1	HTS-1	ACT-1	UBS.1	FTS-1, HTS-1, ACT-1
2020	HALLWAY	UBS.1	FTS-1	HTS-1	ACT-1	UBS.1	FTS-1, HTS-1, ACT-1
2021	HALLWAY	UBS.1	FTS-1	HTS-1	ACT-1	UBS.1	FTS-1, HTS-1, ACT-1
2022	HALLWAY	UBS.1	FTS-1	HTS-1	ACT-1	UBS.1	FTS-1, HTS-1, ACT-1
2023	HALLWAY	UBS.1	FTS-1	HTS-1	ACT-1	UBS.1	FTS-1, HTS-1, ACT-1
2024	HALLWAY	UBS.1	FTS-1	HTS-1	ACT-1	UBS.1	FTS-1, HTS-1, ACT-1
2025	HALLWAY	UBS.1	FTS-1	HTS-1	ACT-1	UBS.1	FTS-1, HTS-1, ACT-1
2026	HALLWAY	UBS.1	FTS-1	HTS-1	ACT-1	UBS.1	FTS-1, HTS-1, ACT-1
2027	HALLWAY	UBS.1	FTS-1	HTS-1	ACT-1	UBS.1	FTS-1, HTS-1, ACT-1
2028	HALLWAY	UBS.1	FTS-1	HTS-1	ACT-1	UBS.1	FTS-1, HTS-1, ACT-1
2029	HALLWAY	UBS.1	FTS-1	HTS-1	ACT-1	UBS.1	FTS-1, HTS-1, ACT-1
2030	HALLWAY	UBS.1	FTS-1	HTS-1	ACT-1	UBS.1	FTS-1, HTS-1, ACT-1
2031	HALLWAY	UBS.1	FTS-1	HTS-1	ACT-1	UBS.1	FTS-1, HTS-1, ACT-1
2032	HALLWAY	UBS.1	FTS-1	HTS-1	ACT-1	UBS.1	FTS-1, HTS-1, ACT-1
2033	HALLWAY	UBS.1	FTS-1	HTS-1	ACT-1	UBS.1	FTS-1, HTS-1, ACT-1
2034	HALLWAY	UBS.1	FTS-1	HTS-1	ACT-1	UBS.1	FTS-1, HTS-1, ACT-1
2035	HALLWAY	UBS.1	FTS-1	HTS-1	ACT-1	UBS.1	FTS-1, HTS-1, ACT-1
2036	HALLWAY	UBS.1	FTS-1	HTS-1	ACT-1	UBS.1	FTS-1, HTS-1, ACT-1
2037	HALLWAY	UBS.1	FTS-1	HTS-1	ACT-1	UBS.1	FTS-1, HTS-1, ACT-1
2038	HALLWAY	UBS.1	FTS-1	HTS-1	ACT-1	UBS.1	FTS-1, HTS-1, ACT-1
2039	HALLWAY	UBS.1	FTS-1	HTS-1	ACT-1	UBS.1	FTS-1, HTS-1, ACT-1
2040	HALLWAY	UBS.1	FTS-1	HTS-1	ACT-1	UBS.1	FTS-1, HTS-1, ACT-1
2041	HALLWAY	UBS.1	FTS-1	HTS-1	ACT-1	UBS.1	FTS-1, HTS-1, ACT-1
2042	HALLWAY	UBS.1	FTS-1	HTS-1	ACT-1	UBS.1	FTS-1, HTS-1, ACT-1

NOT FOR BID



**Savely Healthcare Architects**  
ARCHITECTURE + PLANNING + DESIGN  
505 T Technology Drive, Suite 175  
Folsom, CA 95630  
(916) 431-8071

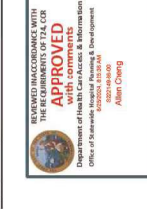
**ARROWHEAD REGIONAL MEDICAL CENT**  
400 N. PEPPER AVE.  
COLTON, CALIFORNIA 92324

**HYBRID OPERATING ROOMS**

**DESIGN GROUP, INC.**  
6075 SANTA MONICA BOULEVARD  
SUITE 100  
LOS ANGELES, CA 90048  
TEL: 805-432-5662  
WWW.DESIGNGROUP.COM

**NO. DATE REVISIONS**

1	03.11.2024	BACK-CHECK SUBMITTAL #2
2	05.06.2024	BACK-CHECK SUBMITTAL #3



**DRAWN BY:** [ ]  
**CHECKED BY:** [ ]  
**DATE:** 03.11.2024

**PROJECT NUMBER:**  
**SHEET NUMBER:**  
**HCA #:** S222140305-00

**INTERIOR ROOM FINISH SCHEDULE**  
ID700

NO.	DATE	REVISIONS
1	03.11.2024	BACK CHECK SUBMITTAL #2
2	05.08.2024	BACK CHECK SUBMITTAL #3



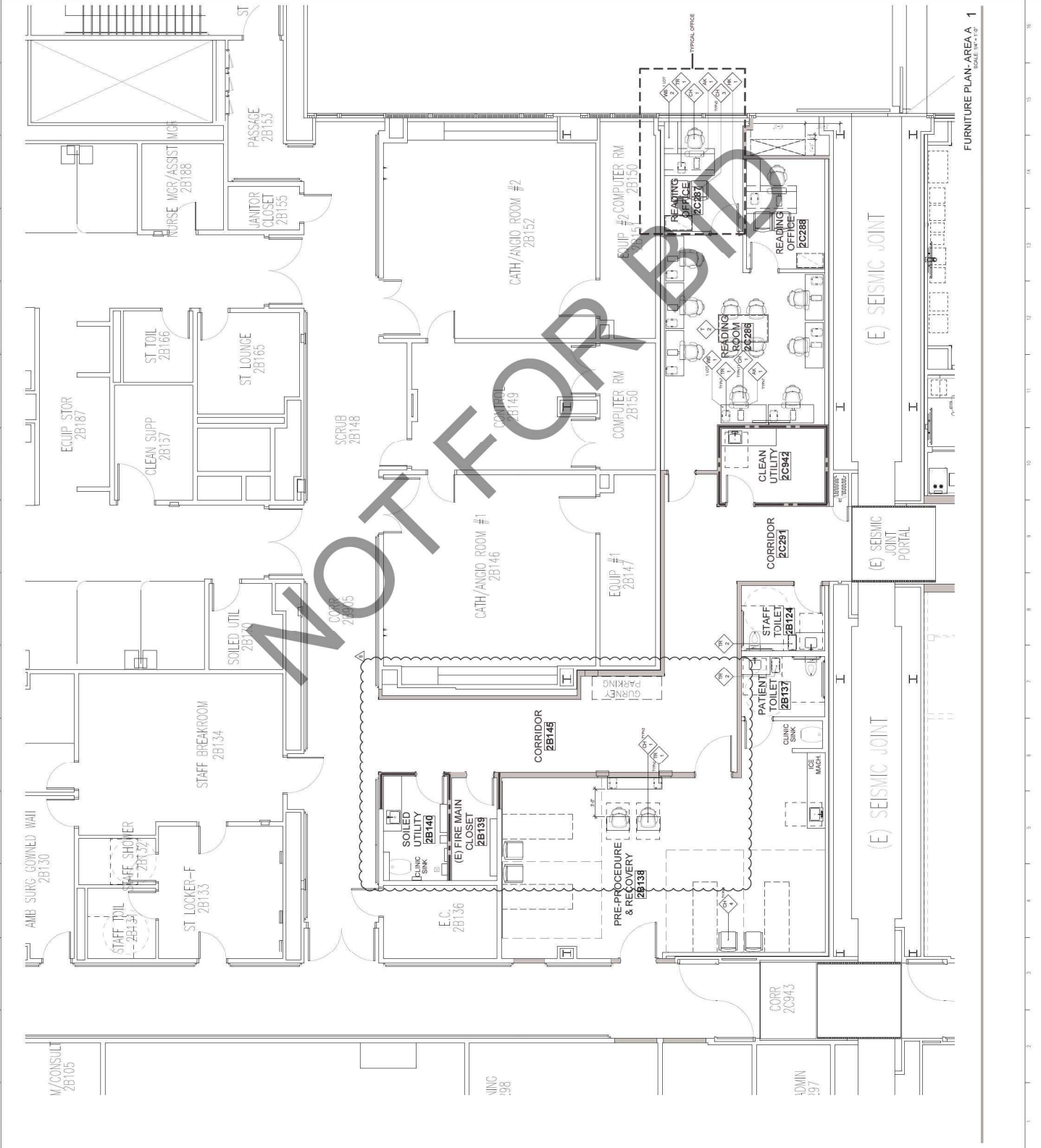
AGENCY APPROVAL



DRAWN BY	COL	CHECKED BY	DATE
PROJECT NUMBER	20592C-06		
SHEET NUMBER	1		
SHEET TITLE	FURNITURE PLAN - AREA A		

**LEGEND & ABBREVIATIONS**

- FURNITURE NOTES**  
 FURNITURE TAGS TYPICAL UNLESS OTHERWISE NOTED.  
 OWNER INSTALLED  
 OWNER PROVIDED  
 OWNER SUPPLIED  
 OWNER INSTALLED  
 OWNER PROVIDED  
 OWNER SUPPLIED  
 OWNER INSTALLED  
 OWNER PROVIDED  
 OWNER SUPPLIED
- ABBREVIATIONS**
- AK ARTICULATING KITCHENWARD
  - BC BENCH
  - BP BENCH PAD
  - BD BENCH DRESSING
  - CD CLOSET
  - CH CHAIR
  - CL CLOSET
  - CR CLOSET
  - CT CLOSET
  - DF DRESSING FIXTURE
  - LO LOCKER
  - LR LOCKER
  - UR URINAL
  - MB MIRROR BOARD
  - ML MIRROR
  - MT MIRROR TABLE
  - PD PATIENT DRESSING
  - PC PATIENT CLOSET
  - SC SINK
  - SP SINK
  - ST STAIR
  - TR TRASH
  - VB VESTIBULE
  - WB WORKBENCH



FURNITURE PLAN - AREA A 1  
 SCALE: 1/4" = 1'-0"





EMERGENCY LIGHTING INVERTER SPECIFICATIONS

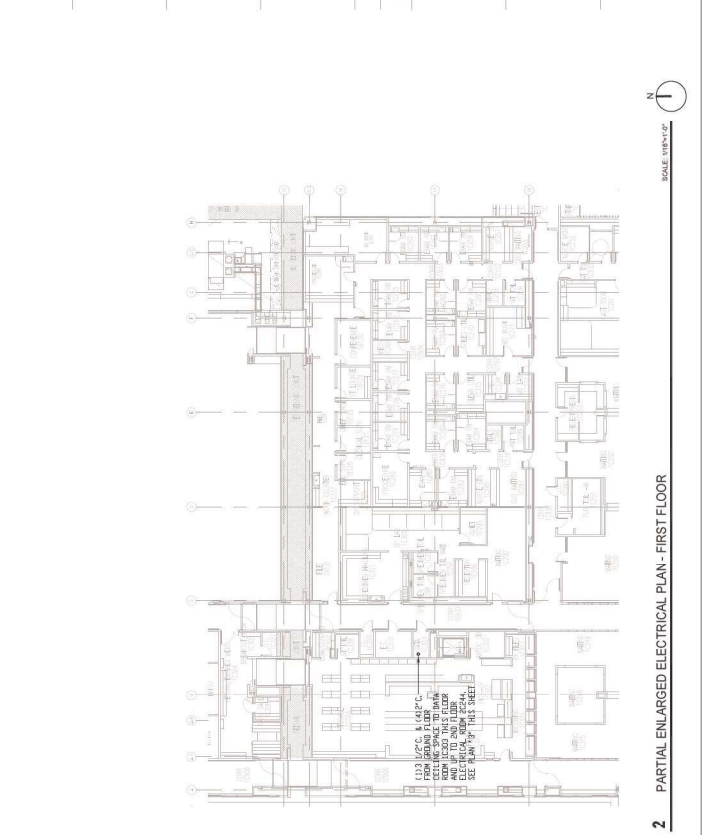
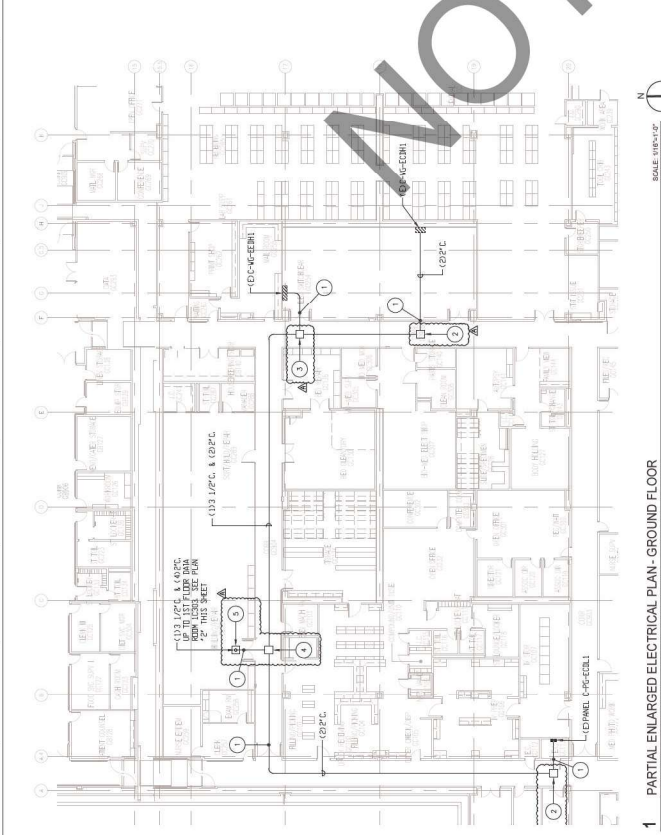
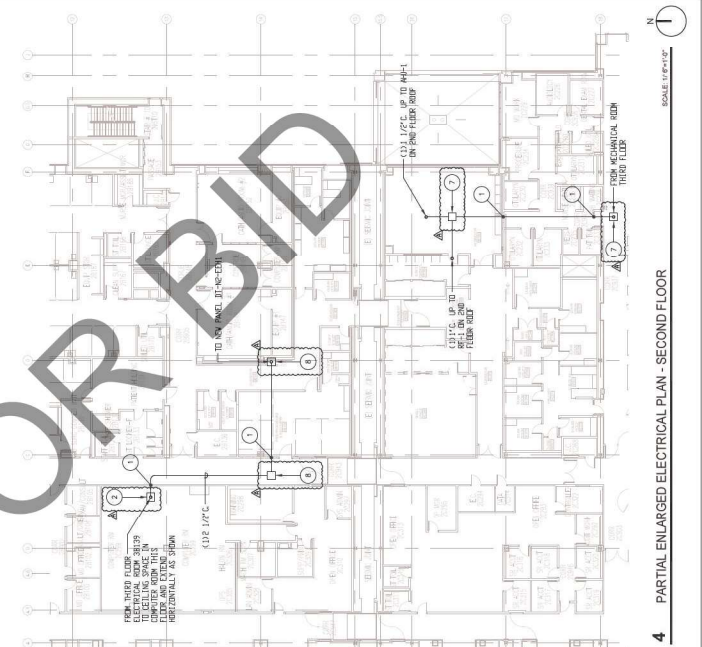
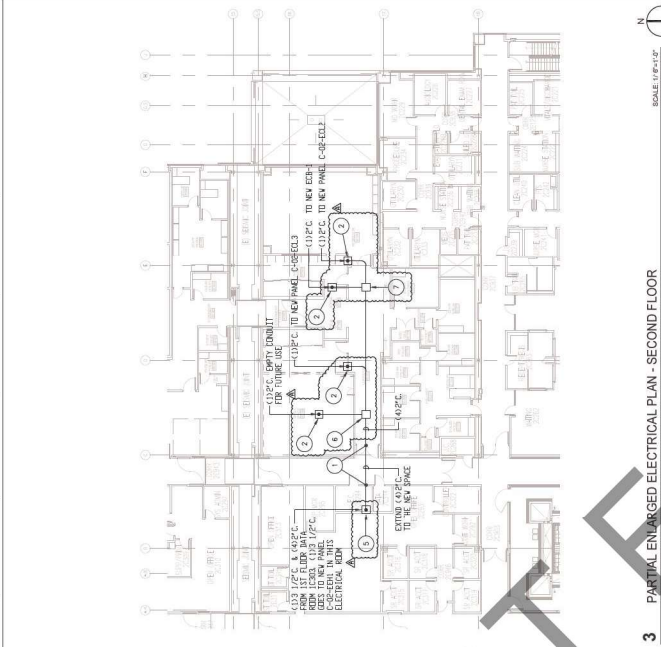
- 1.4 ENVIRONMENTAL CONDITIONS
1.5 ELECTRICAL CONDITIONS
1.6 INVERTER
1.7 BATTERY
1.8 BATTERY CHARGER
1.9 SYSTEM CONFIGURATION
1.10 PERFORMANCE REQUIREMENTS
1.11 TESTING AND ACCEPTANCE CRITERIA
1.12 DOCUMENTATION
1.13 LABELING AND MARKING
1.14 GENERAL NOTES



- KEYNOTES**
1. FIRE STOP PENETRATION OF RATED WALL - SEE DETAIL 1/2023
  2. 14"x14"x4'-0" PULLBOX WITH SOCKEY COVER
  3. 24"x24"x4'-0" PULLBOX WITH SOCKEY COVER
  4. 36"x36"x4'-0" PULLBOX WITH SOCKEY COVER
  5. 24"x24"x4'-0" PULLBOX WITH SOCKEY COVER
  6. 14"x14"x4'-0" PULLBOX WITH SOCKEY COVER
  7. 14"x14"x4'-0" PULLBOX WITH SOCKEY COVER
  8. 14"x14"x4'-0" PULLBOX WITH SOCKEY COVER

**GENERAL NOTES**

1. VERIFY CONDUIT SIZES AND SPACING BEFORE INSTALLATION ON FLOOR. VERIFY CONDUIT SIZES AND SPACING BEFORE INSTALLATION INDICATED IN THE ENLARGED PLANS.
2. PROVIDE ALL LISTED FIRE STOP FOR ALL PENETRATIONS THROUGH THE RATED WALLS AND CEILING. WALLS AND CEILING TO BE PENETRATED BY CONDUIT SHALL BE PENETRATED WITH LISTED FIRE STOP. VERIFY CONDUIT SIZES AND SPACING BEFORE INSTALLATION INDICATED IN THE ENLARGED PLANS.
3. VERIFY CONDUIT SIZES AND SPACING BEFORE INSTALLATION. VERIFY CONDUIT SIZES AND SPACING BEFORE INSTALLATION INDICATED IN THE ENLARGED PLANS. VERIFY CONDUIT SIZES AND SPACING BEFORE INSTALLATION INDICATED IN THE ENLARGED PLANS.



NOT FOR BID





*Alan Cheng*

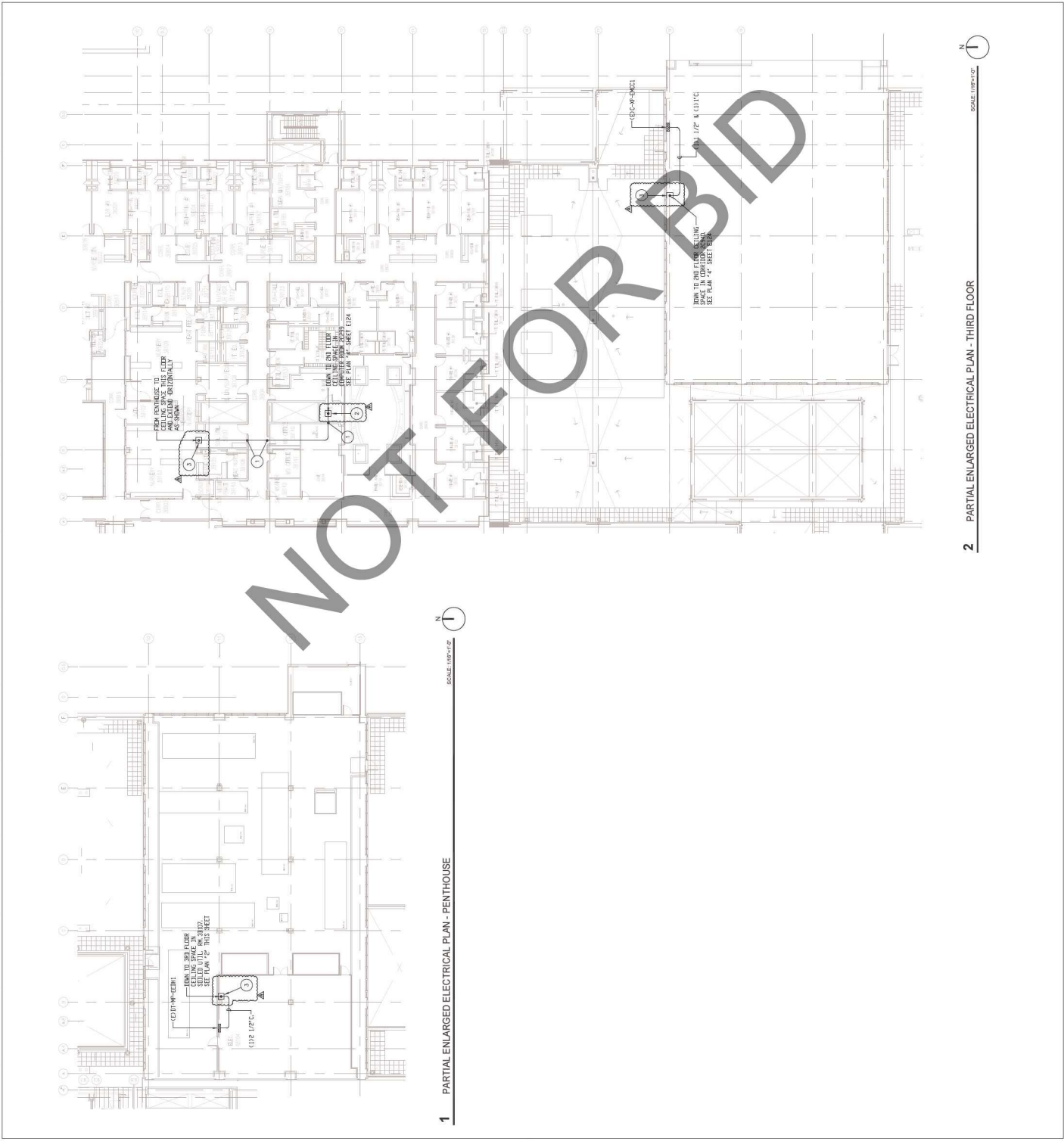


KEYNOTES

1. FIRE STOP PENETRATION OF RATED WALL. SEE DETAIL 1/E03.
2. 16"x16"x-6" PULLBOX WITH SOCK COVER.
3. 14"x16"x-6" PULLBOX WITH SOCK COVER.

GENERAL NOTES

1. NOTIFY THE LOCAL FIRE DEPARTMENT OF ANY PENETRATION OF RATED WALLS OR PENETRATION OF RATED WALLS IN THE ENLARGED PLANS.
2. PROVIDE ALL LISTED FIRE STOP FOR ALL PENETRATIONS THROUGH THE RATED PARTS, WALLS AND CEILING TO THE ADJACENT ROOMS.
3. VERIFY WITH THE LOCAL FIRE DEPARTMENT FOR ANY PENETRATION OF RATED WALLS OR PENETRATION OF RATED WALLS IN THE ENLARGED PLANS. VERIFY WITH THE LOCAL FIRE DEPARTMENT FOR ANY PENETRATION OF RATED WALLS OR PENETRATION OF RATED WALLS IN THE ENLARGED PLANS.



1 PARTIAL ENLARGED ELECTRICAL PLAN - PENTHOUSE

2 PARTIAL ENLARGED ELECTRICAL PLAN - THIRD FLOOR