

PROPOSED BOUNDARIES FOR ANNEXATION NO. 207
 COMMUNITY FACILITIES DISTRICT NO. 94-01 (HESPERIA)
 SAN BERNARDINO COUNTY FIRE PROTECTION DISTRICT, STATE OF CALIFORNIA



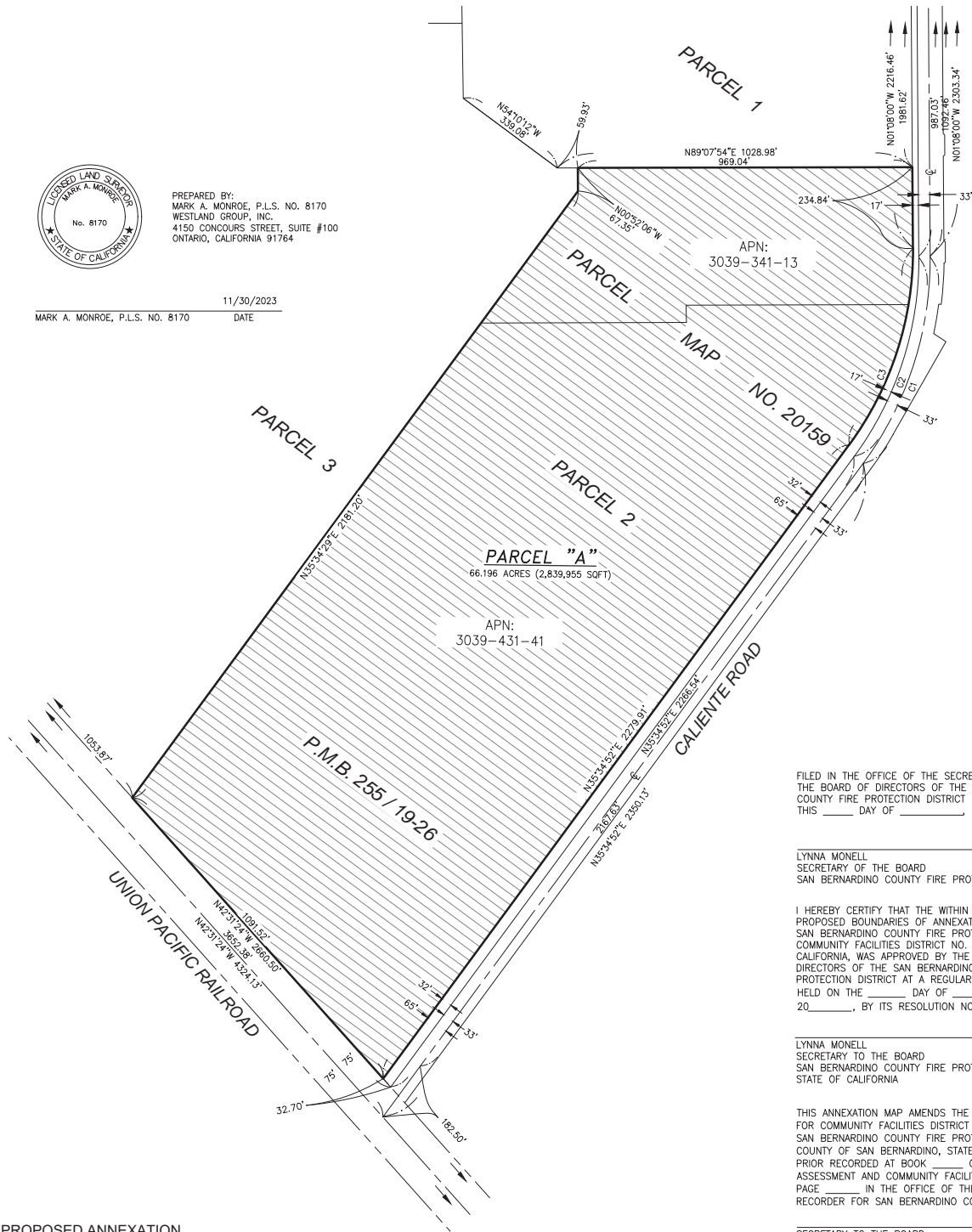
PREPARED BY:
 MARK A. MONROE, P.L.S. NO. 8170
 WESTLAND GROUP, INC.
 4150 CONCOURS STREET, SUITE #100
 ONTARIO, CALIFORNIA 91764

11/30/2023

MARK A. MONROE, P.L.S. NO. 8170 DATE



SCALE: 1" = 200'



FILED IN THE OFFICE OF THE SECRETARY OF
 THE BOARD OF DIRECTORS OF THE SAN BERNARDINO
 COUNTY FIRE PROTECTION DISTRICT
 THIS ____ DAY OF _____, 20____.

LYNNA MONELL
 SECRETARY OF THE BOARD
 SAN BERNARDINO COUNTY FIRE PROTECTION DISTRICT

I HEREBY CERTIFY THAT THE WITHIN MAP SHOWING THE
 PROPOSED BOUNDARIES OF ANNEXATION NO. 207 OF
 SAN BERNARDINO COUNTY FIRE PROTECTION DISTRICT
 COMMUNITY FACILITIES DISTRICT NO. 94-01, STATE OF
 CALIFORNIA, WAS APPROVED BY THE BOARD OF
 DIRECTORS OF THE SAN BERNARDINO COUNTY FIRE
 PROTECTION DISTRICT AT A REGULAR MEETING THEREOF,
 HELD ON THE ____ DAY OF _____,
 20____, BY ITS RESOLUTION NO. _____.

LYNNA MONELL
 SECRETARY TO THE BOARD
 SAN BERNARDINO COUNTY FIRE PROTECTION DISTRICT
 STATE OF CALIFORNIA

THIS ANNEXATION MAP AMENDS THE BOUNDARY MAP
 FOR COMMUNITY FACILITIES DISTRICT NO. 94-01 OF THE
 SAN BERNARDINO COUNTY FIRE PROTECTION DISTRICT,
 COUNTY OF SAN BERNARDINO, STATE OF CALIFORNIA,
 PRIOR RECORDED AT BOOK ____ OF MAPS OF
 ASSESSMENT AND COMMUNITY FACILITIES DISTRICTS, AT
 PAGE ____ IN THE OFFICE OF THE COUNTY
 RECORDER FOR SAN BERNARDINO COUNTY, CALIFORNIA

SECRETARY TO THE BOARD
 SAN BERNARDINO COUNTY FIRE PROTECTION DISTRICT
 STATE OF CALIFORNIA

SAN BERNARDINO COUNTY RECORDER'S CERTIFICATE
 THIS MAP HAS BEEN FILED UNDER DOCUMENT NUMBER
 _____, THIS ____ DAY OF _____,
 _____, 20____, AT _____, IN BOOK
 _____ OF MAPS OF ASSESSMENT AND
 COMMUNITY FACILITIES DISTRICT AT PAGE(S) _____, AT
 THE REQUEST OF THE SAN BERNARDINO COUNTY FIRE
 PROTECTION DISTRICT COMMUNITY FACILITIES DISTRICT,
 94-01 IN THE AMOUNT OF \$ _____
 CHRIS WILHITE
 ASSESSOR-RECORDER
 SAN BERNARDINO COUNTY
 BY: _____
 DEPUTY RECORDER

PROPOSED ANNEXATION

APN #: FOR CONVEYANCING PURPOSES:
 3039-341-13
 3039-431-41

LEGAL DESCRIPTION

THE LAND REFERRED TO HEREIN BELOW IS SITUATED IN THE CITY OF
 HESPERIA, COUNTY OF SAN BERNARDINO, STATE OF CALIFORNIA, AND IS
 DESCRIBED AS FOLLOWS:

PARCEL A:
 PARCEL 2 OF PARCEL MAP 20159, IN THE CITY OF HESPERIA, COUNTY OF
 SAN BERNARDINO, STATE OF CALIFORNIA, AS PER MAP RECORDED IN BOOK
 255, PAGES 19 THROUGH 26, INCLUSIVE, OF MAPS, IN THE OFFICE OF THE
 COUNTY RECORDER OF SAID COUNTY.

CURVE TABLE			
CURVE #	DELTA	RADIUS	LENGTH
C1	36°42'52"	1000.00'	640.79'
C2	36°42'52"	967.00'	619.64'
C3	36°42'52"	950.00'	608.75'

LEGEND

CFD 94-01 PROPOSED ANNEXATION AREA