

# EXHIBIT E-5

## ARCHITECTURAL PLANS

FOR

SAN BERNARDINO COUNTY

PACIFIC VILLAGE PLATINUM CAMPUS, PACIFIC VILLAGE  
SUBSTANCE USE DISORDER PROGRAM, AND  
CDH PACIFIC VILLAGE CAMPUS EXPANSION  
DESIGN-BUILD PROJECT

PROJECT NUMBER 10.10.1533, 10.10.1380, AND  
10.10.1671



SAN BERNARDINO  
COUNTY













































































ARCHITECTURE INTERIOR ARCHITECTURE  
 634-793-5555 OFFICE  
 634-793-5555 MOBILE  
[www.lpa.com](http://www.lpa.com)  
 2746 Franklin Rd.  
 San Diego, California 92108

NOT FOR REGULATORY APPROVAL  
 FORM NO. 04 (02/2017)

KEYNOTES

LEGEND



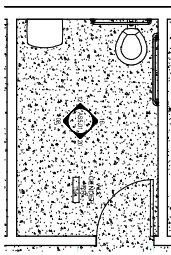
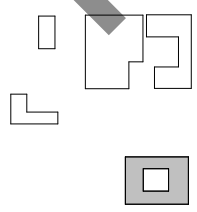
THIS DOCUMENT IS THE PROPERTY OF LPA AND IS TO BE USED ONLY FOR THE PROJECT AND SITE SPECIFICALLY IDENTIFIED HEREIN. IT IS NOT TO BE REPRODUCED, COPIED, OR TRANSMITTED IN ANY FORM OR BY ANY MEANS, ELECTRONIC OR MECHANICAL, INCLUDING PHOTOCOPYING, RECORDING, OR BY ANY INFORMATION STORAGE AND RETRIEVAL SYSTEM, WITHOUT THE WRITTEN PERMISSION OF LPA.

Pacific Village Platinum Campus

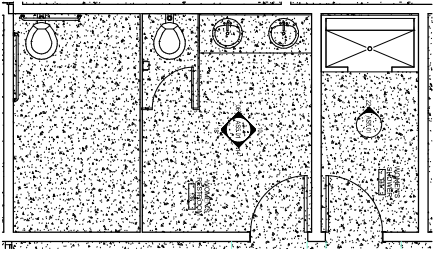
2626 Pacific Street, Highland, CA 92346

Developed for  
 San Bernardino County

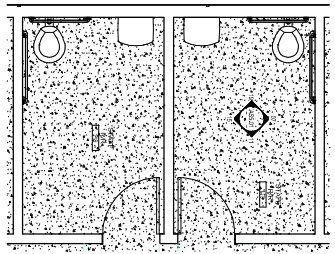
KEYPLAN



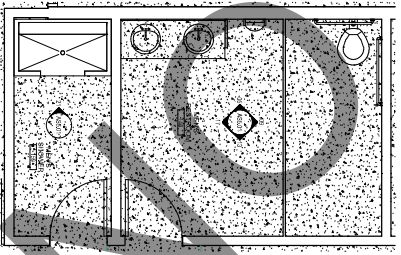
ENLARGED FLOOR PLAN - ALL GENDER RESTROOM 3/8" = 1'-0"



ENLARGED FLOOR PLAN - WOMEN'S HR AND SHOWER 3/8" = 1'-0"



ENLARGED FLOOR PLAN - STAFF RESTROOMS 3/8" = 1'-0"



ENLARGED FLOOR PLAN - MEN'S RESTROOM AND SHOWER 3/8" = 1'-0"

Revision	Date

Submital	Date
ISSUED - DRAFT	03/13/2024

SJD ENLARGED FLOORPLANS  
 AS4.01







