



**Photo 11. Santa Ana Avenue facing south during morning drop-off.** Cars line the street and students ride bikes in the street. Students and parents report having to walk along dirt shoulders or on lanes of traffic along this corridor where the sidewalk is mostly absent. Many students walk from neighborhoods to the south of Santa Ana Avenue, making this a key school route.

# Bloomington High School Safe Routes to School (SRTS) Project

## Attachment F: Project Estimate

Active Transportation  
Program  
(ATP) Cycle 8 Application

San Bernardino County Department of Public Works  
Project Contact: Lana Elyo  
Transportation Analyst  
Phone: (909) 387-8168  
Email: Lana.Elyo@dpw.subcounty.gov



SAN BERNARDINO  
COUNTY

Department of Public Works

# Detailed Project Estimate and Total Project Costs - Cycle 8

Important: Read the Instructions in the first sheet (tab) before entering data. Do not enter data in shaded fields (with formulas).

## Project Information:

Agency: San Bernardino County DPW	Date: 4/7/2026
Project Description: SRTS biking and walking infrastructure improvements around Bloomington High School	
Project Location: Bloomington High School, 10750 Laurel Ave, Bloomington, CA 92316	
Licensed Engineer in responsible charge of preparing or reviewing this PSR-Equivalent Cost Estimate: Jeremy Johnson	
License #: C91246	

## Project Estimate and Cost Breakdown:

Project Estimate (for Construction Items Only)						Cost Breakdown					
Item No.	Item	Quantity	Units	Unit Cost	Total Item Cost	ATP Eligible/ ATP Funded Costs		ATP Ineligible and/or Non-ATP Funded Costs		Corps/CCC to Construct	
						%	\$	%	\$	%	\$
<b>General Overhead-Related Construction Items</b>											
1	Mobilization	1	LS	\$62,000.00	\$62,000	100%	\$62,000				
2	Water Pollution Control Plan	1	LS	\$17,000.00	\$17,000	100%	\$17,000				
3	Traffic Control Plan	1	LS	\$62,000.00	\$62,000	100%	\$62,000				
4	Develop Water Supply	1	LS	\$11,500.00	\$11,500	100%	\$11,500				
5	Supplemental Work (Unforeseen, Site Condit	1	LS	\$23,000.00	\$23,000	100%	\$23,000				
6	Finishing Roadway	1	LS	\$17,000.00	\$17,000	100%	\$17,000				
7								100%			
8								100%			
9								100%			
10								100%			
<b>General Construction Items</b>											
11	Traffic Signal	1	LS	\$1,030,000.00	\$1,030,000	100%	\$1,030,000				
12	Speed Feedback Sign	3	EA	\$11,845.00	\$35,535	100%	\$35,535				
13	High-visibility Crosswalk	4	EA	\$3,090.00	\$12,360	100%	\$12,360				
14	High-visibility Mid-block Crosswalk	1	EA	\$3,090.00	\$3,090	100%	\$3,090				
15	ADA-compliant Curb Ramp	10	EA	\$10,300.00	\$103,000	100%	\$103,000				
16	Rectangular Rapid-flashing Beacon	2	EA	\$47,380.00	\$94,760	100%	\$94,760				
17	"No Left Turn" Sign	1	EA	\$618.00	\$618	100%	\$618				
18	"No Trucks" Sign	1	EA	\$618.00	\$618	100%	\$618				
19	Sidewalk	10,900	FT	\$82.40	\$898,160	100%	\$898,160				
20								100%			
21								100%			
22								100%			
23								100%			
24								100%			
25								100%			
26								100%			
27								100%			
28								100%			
29								100%			
30								100%			
31								100%			
32								100%			
33								100%			
34								100%			
35								100%			
36								100%			
37								100%			
38								100%			
39								100%			
40								100%			
41								100%			
42								100%			
43								100%			
44								100%			
45								100%			
46								100%			
47								100%			
48								100%			
49								100%			
50								100%			
51								100%			
52								100%			
<b>Subtotal of Construction Items:</b>					<b>\$2,370,641</b>		<b>\$2,370,641</b>				
<b>Construction Item Contingencies (% of Construction Items):</b>					<b>15.00%</b>		<b>\$355,596</b>				
<b>Total (Construction Items &amp; Contingencies) cost:</b>					<b>\$2,726,237</b>		<b>\$2,726,237</b>				

## Project Delivery Costs:

Type of Project Cost	Cost \$
----------------------	---------

# Detailed Project Estimate and Total Project Costs - Cycle 8

Important: Read the Instructions in the first sheet (tab) before entering data. Do not enter data in shaded fields (with formulas).

## Project Information:

Agency: San Bernardino County DPW	Date: 4/7/2026
Project Description: SRTS biking and walking infrastructure improvements around Bloomington High School	
Project Location: Bloomington High School, 10750 Laurel Ave, Bloomington, CA 92316	
Licensed Engineer in responsible charge of preparing or reviewing this PSR-Equivalent Cost Estimate: Jeremy Johnson	License #: C91246

Preliminary Engineering (PE)		ATP Eligible and ATP Funded Costs	ATP Ineligible and/or Non-ATP Funded Costs		
Project Approval and Environmental Document (PA&ED):	\$97,000	\$97,000			
Plans, Specifications and Estimates (PS&E):	\$ 303,000	\$303,000			"PE" costs / "CON" costs
<b>Total PE:</b>	<b>\$ 400,000</b>	<b>\$400,000</b>			<b>15% 25% Max</b>
Right of Way (RW)					
Right of Way Engineering:	\$ 1,993,000	\$1,993,000			
Acquisitions and Utilities:	\$ 36,000	\$36,000			
<b>Total RW:</b>	<b>\$ 2,029,000</b>	<b>\$2,029,000</b>			
<b>Total Pre-Construction Costs (PE+RW):</b>	<b>\$2,429,000</b>	<b>\$2,429,000</b>			
Construction Engineering (CE)					
Construction Engineering (CE):	\$ 282,000	\$282,000			"CE" costs / "CON" costs
<b>Total Construction Costs (Construction Items &amp; Contingencies + CE):</b>	<b>\$3,008,237</b>	<b>\$3,008,237</b>			<b>10% 15% Max</b>
<b>Total Project Cost:</b>		<b>\$5,437,237</b>	<b>\$5,437,237</b>		

Documentation of Eligible and/or Ineligible Costs:	
The Engineer's	
Separate	
Item #:	Description of Engineer's Justification: (See example shown in the Instructions)

# Bloomington High School Safe Routes to School (SRTS) Project

Safe Routes to School (SRTS) Project

## LETTERS OF SUPPORT

Active Transportation Program  
(ATP) Cycle 8 Application

San Bernardino County Department of Public Works  
Project Contact: Lana Elyo  
Transportation Analyst  
Phone: (909) 387-8168  
Email: Lana.Elyo@dpw.subcounty.gov





*Yvette Roman  
Principal*

*Chris Herlihy  
Assistant Principal*

*LaQuenta Martin  
Assistant Principal*

*Brian Pope  
Assistant Principal*

*Nicole Corona  
Activities Director*

*Jared Hovsepian  
Athletic Director*

*Counselors*

*Rocio Cuevas*

*Lizette Gambino*

*Nallely Jimenez*

*David Johnson*

*Angela Lee*

*Xochitl Setlich*

# *Bloomington High School*

10750 Laurel Avenue, Bloomington, CA 92316

Phone: (909) 580-5004

Fax: (909) 876-6326

## **Tanisha Taylor**

Executive Director

California Transportation Commission

1120 N Street, MS 52

Sacramento, CA 95814

## **RE: Support for Active Transportation Program Cycle 8 Application – San Bernardino County Safe Routes to School Project**

Dear Ms. Taylor:

As Principal of Bloomington High School, I am pleased to offer my strong support for the County of San Bernardino's application to the Caltrans Active Transportation Program for the Safe Routes to School Project serving our students and families.

Bloomington High School, located in an unincorporated community within the Colton Joint Unified School District, serves a predominantly Hispanic student population, the majority of whom qualify for free or reduced-price meals. Our community continues to face longstanding infrastructure and public health challenges, including disproportionate exposure to environmental pollutants and limited access to safe, accessible neighborhood amenities. These factors contribute to inequitable health outcomes and restrict students' ability to utilize safe, non-motorized modes of transportation.

The conditions surrounding Bloomington High School present significant and well-documented safety concerns, as identified in the 2025 San Bernardino County Safe Routes to School Plan. These include missing curb ramps and crosswalks, gaps in sidewalk connectivity, a lack of dedicated bicycle infrastructure, high traffic volumes, and excessive speeds—particularly from heavy truck traffic—along routes frequently used by students. During arrival and dismissal times, limited parking and insufficient crossing infrastructure further increase risk, and staff regularly observe students navigating unsafe crossings through active traffic. These conditions directly impact student safety, attendance, and readiness to learn.

The proposed project will meaningfully address these challenges by improving the safety, accessibility, and connectivity of active transportation infrastructure surrounding Bloomington High School. Planned enhancements—including the installation of continuous sidewalks, ADA-compliant curb ramps, high-visibility crosswalks, targeted traffic calming measures, and Class II bicycle lanes—will significantly reduce the risk of injury while expanding safe transportation options for students and families.

Beyond immediate safety benefits, these improvements advance broader goals related to equity, climate sustainability, and public health. By promoting walking and bicycling, the project will help reduce vehicle dependence, improve air quality, and support healthier lifestyles for a community that has historically faced environmental and socioeconomic disparities.



*Yvette Roman  
Principal*

*Chris Herlihy  
Assistant Principal*

*LaQuenta Martin  
Assistant Principal*

*Brian Pope  
Assistant Principal*

*Nicole Corona  
Activities Director*

*Jared Hovsepian  
Athletic Director*

*Counselors*

*Rocio Cuevas*

*Lizette Gambino*

*Nallely Jimenez*

*David Johnson*

*Angela Lee*

*Xochitl Setlich*

# ***Bloomington High School***

10750 Laurel Avenue, Bloomington, CA 92316

Phone: (909) 580-5004

Fax: (909) 876-6326

I strongly support this application and respectfully urge the California Transportation Commission to fund this critical investment. Thank you for your consideration and for your continued leadership in advancing equitable and safe transportation solutions across California.

Sincerely,

A handwritten signature in blue ink, appearing to read "Yvette Roman", with a horizontal line extending to the right.

**Yvette Roman**  
Principal, Bloomington High School



## Public Health Administration

**Joshua Dugas, MBA, REHS**  
Director

**Jennifer Osorio, REHS**  
Assistant Director

**Janki Patel, MPH**  
Assistant Director

**Sharon Wang, DO, MSHPE, FIDSA**  
Health Officer

May 1, 2026

Tanisha Taylor  
Executive Director  
California Transportation Commission  
1120 N Street, MS 52  
Sacramento, CA 95814

RE: Support for Safe Routes to School Active Transportation Program Applications –  
San Bernardino County

Dear Ms. Taylor:

The San Bernardino County Department of Public Health is pleased to provide its strong support for San Bernardino County's Active Transportation Program (ATP) applications focused on Safe Routes to School (SRTS) improvements. These include infrastructure projects serving Redlands East Valley High School, Bloomington High School, Dickson Elementary School, Pacific High School, and Sequoia Middle School, as well as a Planning Grant for the High Desert region encompassing nineteen school-area locations.

San Bernardino County faces significant public health challenges related to physical inactivity, preventable chronic disease, and traffic-related injuries, particularly in unincorporated and underserved communities. 36.5 percent of adults in the County are obese, significantly higher than the California average, and nearly 1 in 5 children (19.8%) are overweight for their age. These conditions are closely linked to built-environment barriers such as incomplete sidewalks, high vehicle speeds, and a lack of safe crossings. Traffic safety data further underscore this need, with 14,615 people injured or killed in collisions in 2024 alone, and increasing risks for pedestrians and bicyclists.

The proposed SRTS infrastructure projects address these challenges by improving sidewalks, bicycle facilities, crossings, and traffic calming measures near schools. These improvements are essential to creating safer, reliable routes for students and will help reduce conflicts between vehicles and active transportation users. Studies of SRTS programs have documented reductions in child pedestrian injury rates near schools of approximately 20%-50%.

These projects are particularly important for disadvantaged, rural, and unincorporated communities that have experienced longstanding gaps in pedestrian and bicycle infrastructure. The High Desert Planning Grant will further support this effort by establishing a coordinated, data-

### BOARD OF SUPERVISORS

COL. PAUL COOK (RET.)  
First District

JESSE ARMENDAREZ  
Second District

DAWN ROWE  
Chairman, Third District

CURT HAGMAN  
Fourth District

JOE BACA, JR.  
Vice Chair, Fifth District

Luther Snoke  
Chief Executive Officer

DPW ATP SUPPORT LETTER

MAY 1, 2026

PAGE 2 of 2

driven framework that integrates community input and stakeholder engagement to identify priority improvements and address local safety concerns.

The Department of Public Health fully supports San Bernardino County's SRTS ATP applications and respectfully urges Caltrans to fund these critical projects. The proposed improvements will deliver measurable safety benefits while advancing long-term public health outcomes for children and families throughout the County.

Please feel free to contact our office at 909.387.6469 if you need additional information.

Sincerely,

A handwritten signature in cursive script that reads "Janki Patel".

Janki Patel  
Assistant Director

*San Bernardino County reserves the right to revoke support for the aforementioned item at any time.*

# Colton Joint Unified School District

Frank Miranda, Ed.D., Superintendent



*Commitment to Equal Opportunity*

## BOARD OF EDUCATION

Ms. Bertha Flores, *President*

Mr. Israel Fuentes, *Vice President*

Mr. Frank A. Ibarra *Clerk*

Mr. Dan Flores

Ms. Patt Haro

Ms. Berenice Sandoval

Ms. Joanne E. Thoring-Ojeda

April 15, 2026

Tanisha Taylor  
Executive Director  
California Transportation Commission  
1120 N Street, MS 52  
Sacramento, CA 95814

RE: Support for ATP Application – San Bernardino County Safe Routes to School Project

Dear Ms. Taylor:

On behalf of the Colton Joint Unified School District (CJUSD), I am pleased to express our strong support for San Bernardino County's application to the California Transportation Commission Active Transportation Program for the Safe Routes to School Project serving Bloomington High School. This project directly supports CJUSD's core commitments to advancing achievement, equity, and wellness for students.

CJUSD serves approximately 18,912 students across 28 elementary, middle, and high schools, with Bloomington High School representing an essential part of our district and broader community. Traffic conditions surrounding the school's campus present immediate safety concerns, with congested, high-speed traffic and fragmented infrastructure lacking critical safety infrastructure limiting students' ability to safely walk or bike to school. The proposed Safe Routes to School project will mitigate these safety barriers through the installation of sidewalks, ADA-compliant curb ramps, multiple high visibility crosswalks, targeted traffic control measures, a traffic signal to replace a four-way stop, and class II bicycle facilities. Together, these enhancements will reduce traffic safety risks and provide safer, accessible, non-motorized travel routes, fostering a safe and supportive school environment that strengthens student learning and success.

Within the context of persistently high childhood obesity rates and low levels of physical activity among adolescents, the proposed enhancements at Bloomington High School represent a critical investment in long-term student health outcomes. Research indicates that improvements to walking and cycling infrastructure in school neighborhoods represent an opportunity to incorporate physical activity into students' everyday routines, promoting the establishment of healthy habits and providing physiological and psychological benefits and creating a strong foundation for rewarding futures.

The proposed Safe Routes to School project is in alignment with broader District, state, and regional priorities and will positively impact our students and families in both the near and long term. We fully support San Bernardino County's efforts and respectfully urge favorable consideration for Active Transportation Program funding.

Sincerely,

A handwritten signature in blue ink, appearing to read 'Frank Miranda', is written over a horizontal line.

Dr. Frank Miranda, Ed.D.  
Superintendent



# City of Rialto California

April 22, 2026

Tanisha Taylor  
Executive Director  
California Transportation Commission  
1120 N Street, MS 52  
Sacramento, CA 95814

RE: Support for ATP Application - Bloomington High School Safe Routes to School

Dear Ms. Taylor:

On behalf of the City of Rialto, I am pleased to express support for the County of San Bernardino's application to the Caltrans Active Transportation Program for the Safe Routes to School Project serving Bloomington High School. Bloomington High School is located in an adjacent unincorporated community and attended by some Rialto students.

The City appreciates the value of Safe Routes to School infrastructure investments that will measurably improve safety conditions and mobility access for students, families, and community members. The proposed improvements, including the construction of sidewalks, enhanced pedestrian crossings, ADA-compliant curb ramps, cycling infrastructure, and targeted traffic control measures, will address identified safety gaps and provide safer pathways for students to utilize non-motorized transportation methods.

This project is in alignment with state, regional, and local priorities and policies related to traffic safety, accessibility, public health, and active transportation. Improvements to pedestrian and cycling infrastructure surrounding Bloomington High School will enhance operational efficiency during peak school hours, reduce conflict points and cyclist stress, and support a safer school environment for students and families.

The City values its partnership with San Bernardino County and fully supports the allocation of ATP funding to advance this Safe Routes to School project. Successful implementation will provide lasting benefits to the community and contribute to a safer, more connected transportation network.

Sincerely,

Tanya Williams  
City Manager



May4,2026

Tanisha Taylor  
Executive Director  
California Transportation Commission  
1120 N Street, MS 52  
Sacramento, CA 95814

**RE: Support for Bloomington High School Safe Routes to School – ATP Application**

Dear Ms. Taylor:

On behalf of the City of Fontana, I am writing to support the County of San Bernardino’s application to the Caltrans Active Transportation Program for the Safe Routes to School project serving Bloomington High School. Although the school is just outside city limits, many Fontana students attend, making this project important to our community.

The City supports smart investments that improve safety and access. This project will add sidewalks, safer crosswalks, ADA-accessible curb ramps, traffic safety features, and bike facilities. These upgrades will help fix current safety issues and make it easier and safer for students to get to and from school.

This project is a strong use of public funding and supports shared goals of improving traffic safety, accessibility, and active transportation. It will also help reduce congestion around the school and create safer, more reliable travel options for students and families.

The City of Fontana values its partnership with the County of San Bernardino and fully supports funding for this project. Once completed, it will provide long-term safety and connectivity benefits for the community.

Sincerely,

ACQUANETTA WARREN  
Mayor of the City of Fontana

# Bloomington High School Safe Routes to School (SRTS) Project

---

## ATTACHMENT K: ADDITIONAL ATTACHMENTS

Active Transportation Program  
(ATP) Cycle 8 Application

San Bernardino County Department of Public Works  
Project Contact: Lana Elyo  
Transportation Analyst  
Phone: (909) 387-8168  
Email: Lana.Elyo@dpw.subcounty.gov



# TABLE OF CONTENTS

STUDENT TRAVEL PATTERNS AND BARRIERS	1
ADDITIONAL DAC INFORMATION	7
SCHOOL REPORT CARD	13
TRAFFIC WARRANT STUDY	16



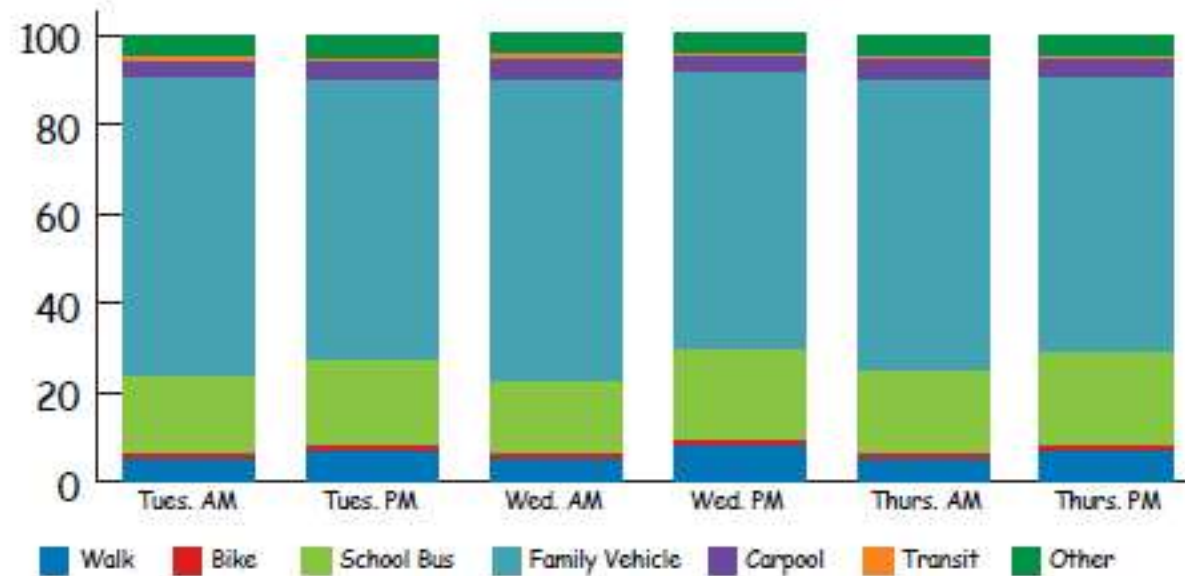
Exhibit

Student Travel Patterns and Barriers to Walking and Biking

## Student Travel Patterns

Student travel tallies indicate that most students (approx. 65%) arrive and depart by family vehicle, while riding the school bus remains the second most common mode (approx. 19%). The mobility assessment conducted for Bloomington High School determined there are missing sidewalks along Laurel Avenue, Santa Ana Avenue, and Alder Avenue. Intersections currently have only one or two ADA-compliant curb ramps, and semi-trucks were seen driving along Laurel Avenue and Alder Avenue during school pickup time, though this is not a truck route. Students walk southbound on Alder Avenue to the neighborhoods south of the school. A major concern was that the intersection at Alder Avenue and Santa Ana Avenue cross the street without getting wet. There is currently no bicycle infrastructure, but students were observed rolling on skateboards after school. Speeding was also cited as a main concern along Sana Ana Avenue, Laurel Avenue, and Alder Avenue.

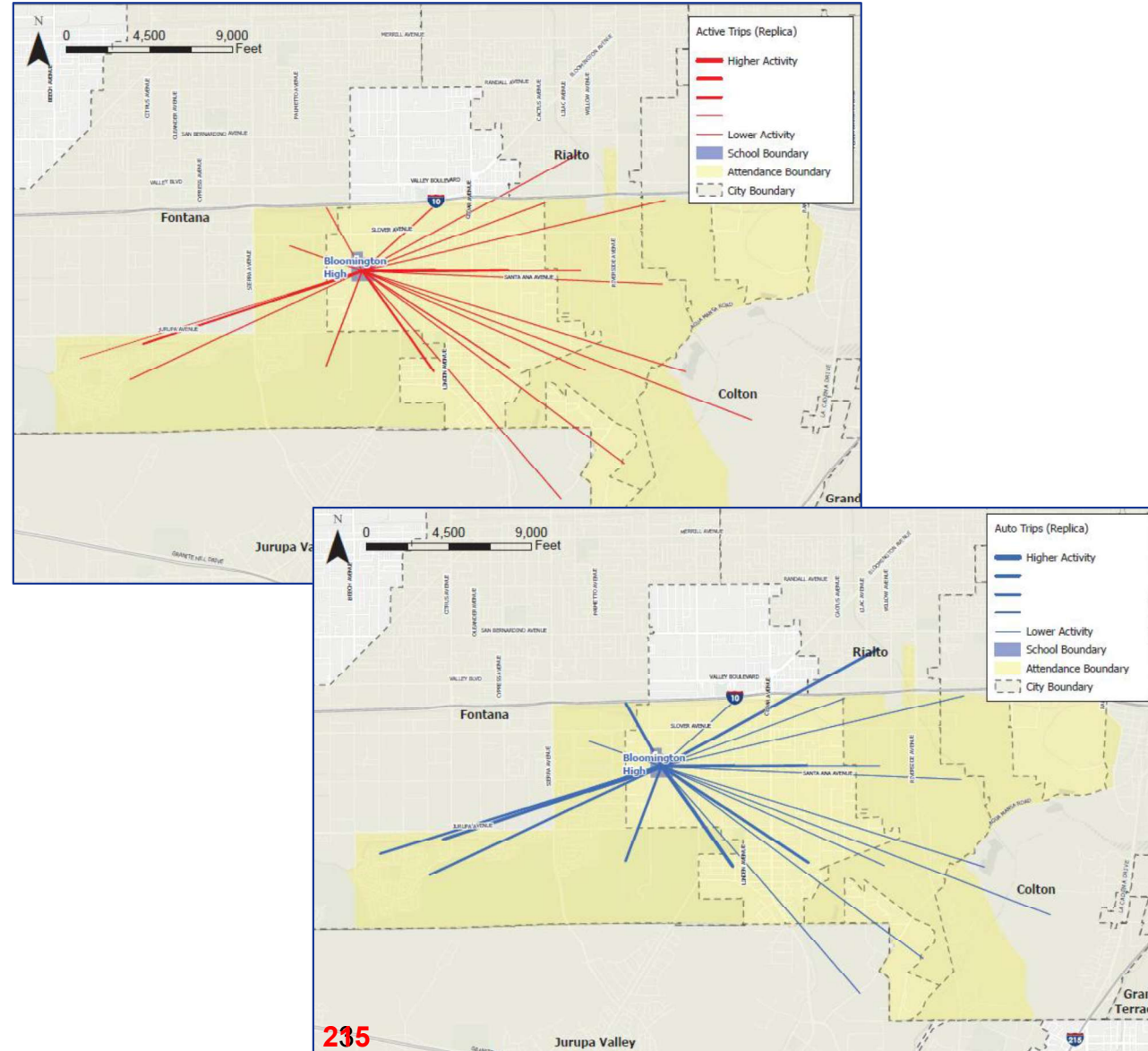
## Student Travel Patterns



# Active and Auto Travel Patterns

## Active Travel Patterns (Red) and Auto Travel Patterns (Blue)

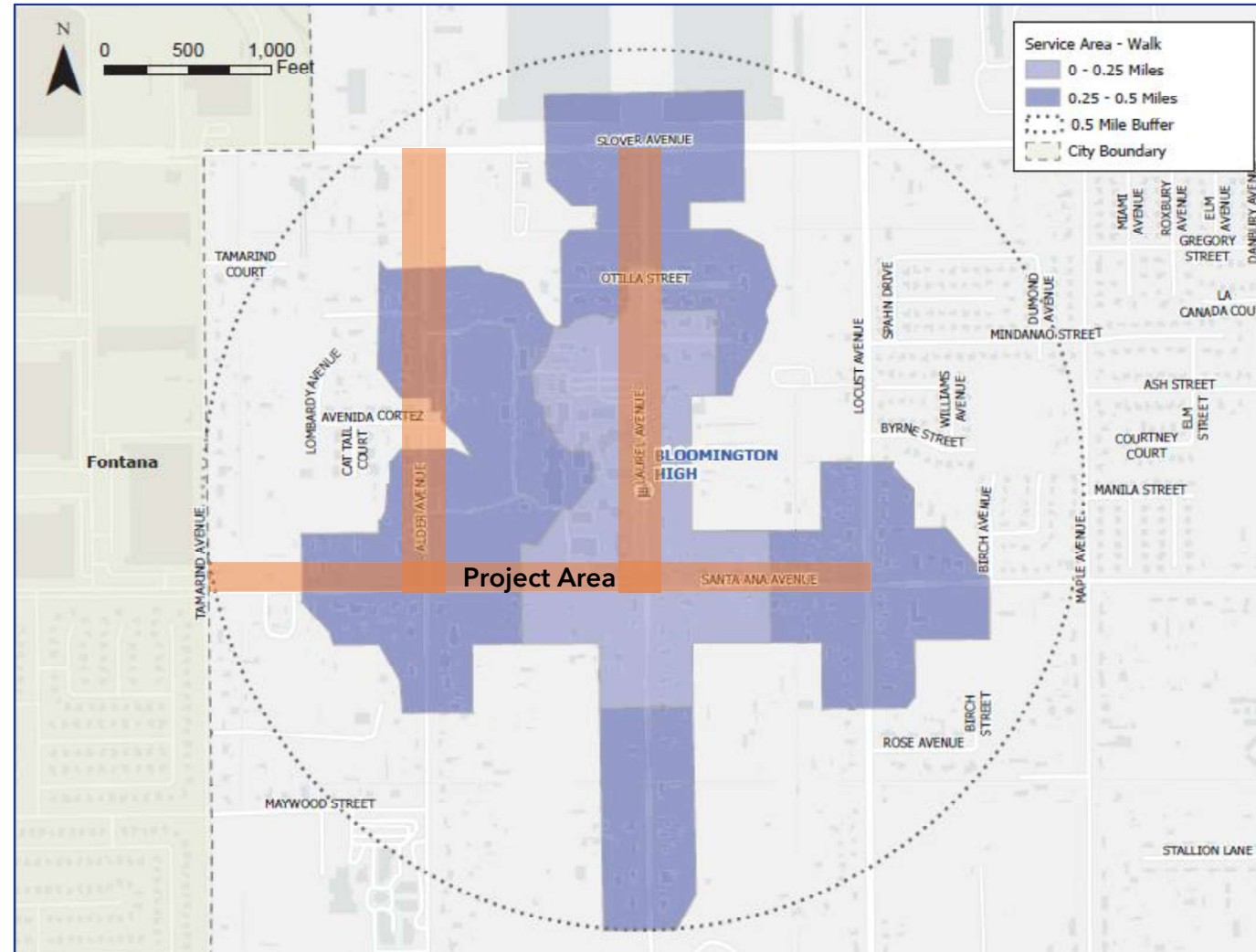
Travel pattern analysis shows that students access the school from multiple directions across a broad geographic area. Auto travel (blue) dominates, with high activity along key corridors serving the school. Active travel (red) is present but more limited, reflecting constraints related to unsafe or absent walking and bicycling infrastructure around the school. Key routes, including Santa Ana Avenue, Locust Avenue, and Slover Avenue, serve both vehicle and student travel, creating potential conflicts. The proposed SRTS Project supports a shift toward active transportation by improving safety, connectivity, and multimodal access.



## Existing Pedestrian Walkshed

### Existing Pedestrian Walkshed

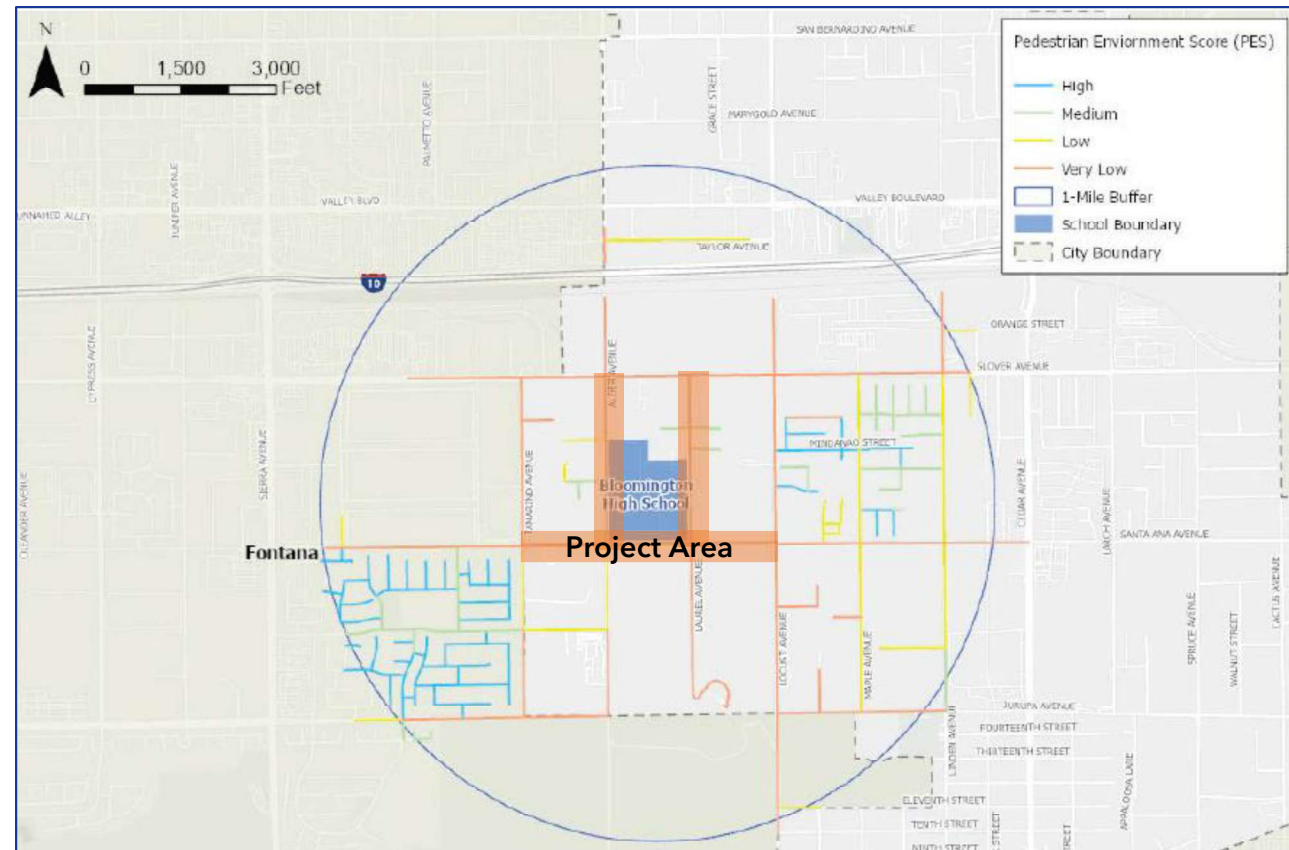
The existing pedestrian walkshed illustrates walkable routes within 0.25- and 0.5-miles of the school. While many students live within walking distance, the accessible walkshed is constrained by gaps in pedestrian infrastructure and limited safe, accessible crossings. Key corridors, including Slover, Laurel, Alder, and Santa Ana Avenues, create barriers that reduce safe and direct access to the school. As a result, students who could walk are often driven due to safety concerns and connectivity gaps. The Project improves network connectivity and expands safe walking access within the school's walkshed.



## Pedestrian Evaluation Score (PES)

### Pedestrian Evaluation Score (PES)

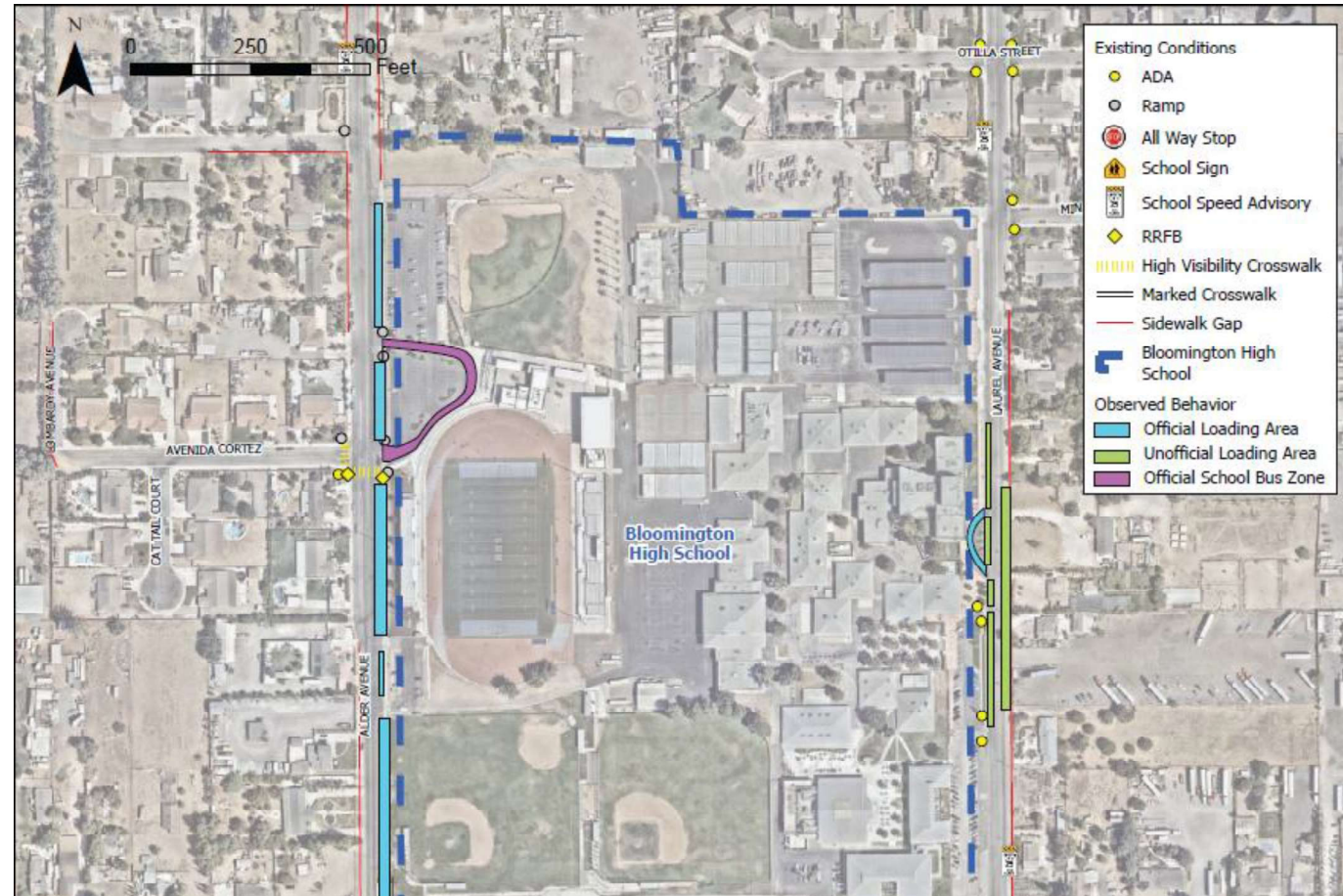
The Pedestrian Environment Score (PES) evaluates roadway segments based on comfort, safety, and accessibility for pedestrians within a one-mile radius. All roadway segments within the Project area are rated very low, indicating poor walking conditions for students traveling to and from school. Low scores reflect fragmented sidewalks, limited or poor-quality crossing infrastructure, and exposure to higher-speed traffic corridors. Key routes along Slover Avenue, Locust Avenue, Alder Avenue, Tamarind Avenue, and Santa Ana Avenue meet these criteria, reinforcing the need for targeted safety improvements. The Project addresses these deficiencies by, filling sidewalk gaps, improving crossings, enhancing accessibility, and creating safer walking conditions.



### Existing Pick-up and Drop-off Vehicle Behavior

Existing pick-up and drop-off activity is concentrated along Laurel Avenue, at the front of the school, and Slover Avenue, at the back. Both designated and informal loading areas contribute to congestion and limited visibility for drivers and students, heightening risks for collision. On Laurel Avenue, inadequate or absent crosswalks lead to students crossing through moving and queued traffic to reach cars parked informally along the opposite side of the street. These conditions reduce visibility and increase safety risks for students, whether they use active or auto transportation. The Project mitigates these concerns by enhancing and constructing additional crossings, organizing traffic flow, and reducing vehicle conflicts.

## Existing Pick-up and Drop-off Vehicle Behavior



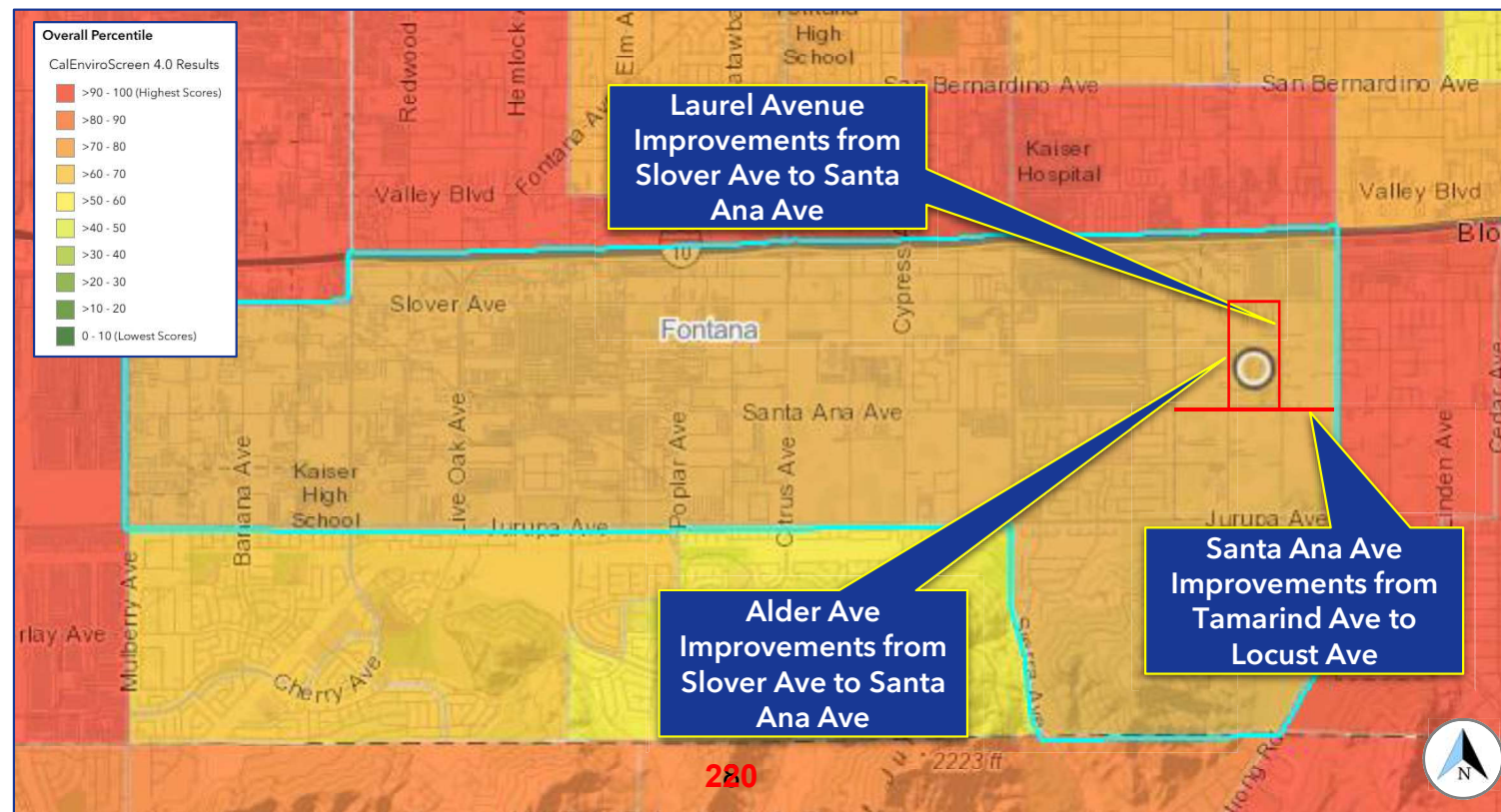


**Exhibit**  
**Additional Disadvantaged Community Data**

## CalEnviroScreen 4.0 Overall Percentile

The Project serves a Disadvantaged Community with a percentile score of 71, exceeding the SB 535 threshold. Census Tract 6071002601 has a population of 9,594 and experiences elevated environmental and exposure-related burdens that impact community well-being. CalEnviroScreen 4.0 data indicate extremely high pollution and ozone exposure (97<sup>th</sup> and 95<sup>th</sup> percentile, respectively), along with elevated PM 2.5 exposure (94<sup>th</sup> percentile), and drinking water contamination (96<sup>th</sup> percentile). The data further indicates significant hazardous waste and solid waste contamination (94<sup>th</sup> and 87<sup>th</sup> percentile, respectively). Risk of cardiovascular disease and asthma are also elevated (55<sup>th</sup> percentile and 44<sup>th</sup> percentile, respectively).

These combined burdens increase risks for residents and underscore the need for safer, more accessible transportation options to improve student and community health outcomes. The Project will help address these challenges by improving pedestrian infrastructure, reducing exposure to traffic-related pollutants, and supporting safer, more reliable access to school and community destinations.





Department of Public Works

## CalEnviroScreen 4.0 Overall Percentile

### Overall Percentiles

CalEnviroScreen 4.0 Percentile	71
Pollution Burden Percentile	97
Population Characteristics Percentile	41

### Exposures

Ozone	95
Particulate Matter 2.5	94
Diesel Particulate Matter	78
Toxic Releases	85
Traffic	80
Pesticides	18
Drinking Water	96
Lead from Housing	42

Census Tract 6071002601 has a population of 9,594 that is 66.62% Hispanic.

### Environmental Effects

Cleanup Sites	83
Groundwater Threats	14
Hazardous Waste	94
Impaired Waters	0
Solid Waste	87

### Sensitive Populations

Asthma	44
Low Birth Weight	20
Cardiovascular Disease	55

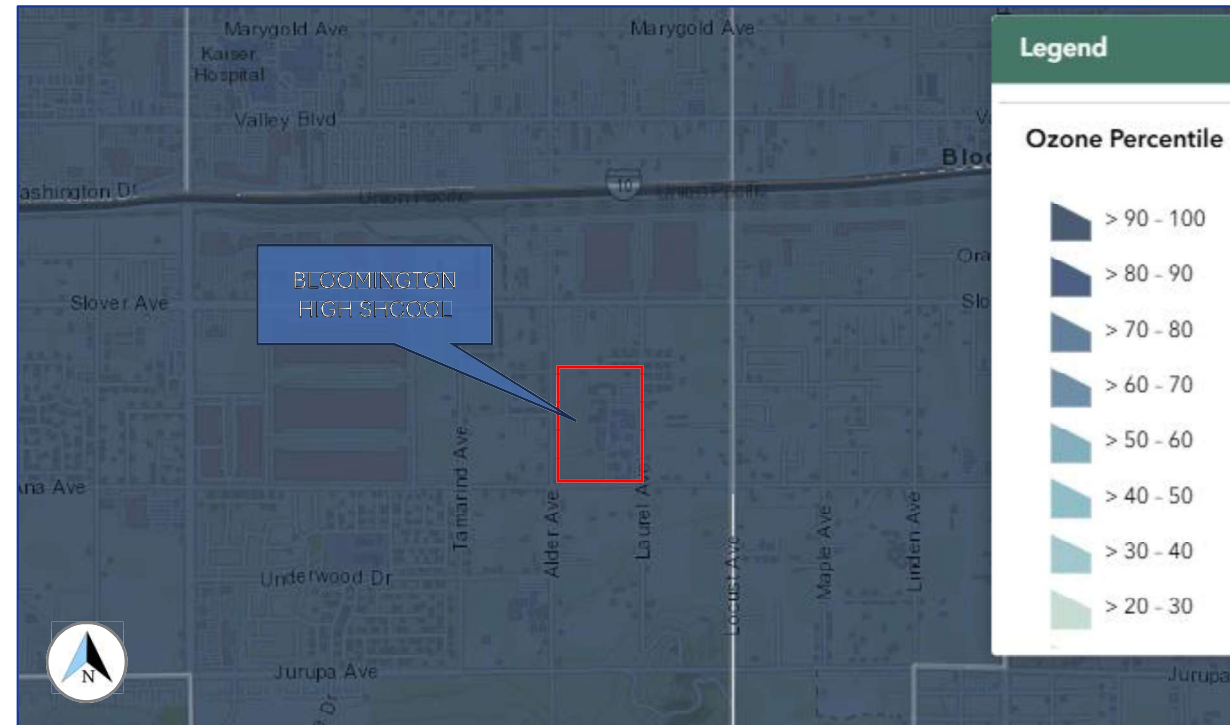
### Socioeconomic Factors

Education	73
Linguistic Isolation	35
Poverty	51
Unemployment	51
Housing Burden	27

## CalEnviroScreen 4.0 Ozone Indicator Map

The Project area experiences extremely high ozone exposure, ranking in the 95<sup>th</sup> percentile, indicating some of the highest ozone concentrations in the state. Elevated ozone levels are associated with adverse respiratory and cardiovascular health impacts, particularly for sensitive populations such as students.

This high level of exposure underscores the need for transportation improvements that reduce reliance on vehicle travel and support safer, more accessible active transportation options in order to limit exposure for students and community members, help improve air quality, and ultimately assist in fostering more positive health outcomes.



## CalEnviroScreen 4.0 PM 2.5 Indicator Map

The Project area experiences extremely high exposure to fine particulate matter (PM2.5), ranking in the 94<sup>th</sup> percentile.

PM2.5, or particulate matter, airborne pollution made up of particles less than 2.5 micrometers in size, which is what causes these particles to be particularly dangerous for human health. PM2.5 can permeate deep into the lungs, causing health problems including heart and lung disease. Examples of PM2.5 include organic chemicals, dust, soot and metals.

PM2.5 levels contribute to a broader pattern of cumulative, persistently high environmental burdens in the Project area, including extremely high ozone exposure and other pollution indicators.

These conditions increase health risks and underscore the need for safer active transportation options that will help improve local air quality and encourage healthy lifestyles which can assist in mitigating some impacts of elevated risk.

