

LEARN MORE ABOUT CRAIG

ENSURING PUBLIC SAFETY

It is my personal commitment to safeguard the well-being of the public throughout the duration of the project. With my personal oversight, our project team will implement comprehensive site-specific safety plans that include secure fencing, clear signage, and designated pedestrian pathways to separate construction activities from public areas. Regular safety audits and coordination with local authorities will be conducted to proactively identify and mitigate potential risks. Additionally, my team and I will communicate regularly with stakeholders and the surrounding community to keep them informed of construction activities and any changes that may affect public access.

IMPLEMENTING LESSONS LEARNED

One of the most memorable experiences that underscored the importance of safety practices occurred during my time prior to joining McCarthy. I was on a project where a trade partner was moving a 2,000-pound tree. The tree was being hoisted with only a single tag line, and I observed workers walking directly beneath it. Recognizing the potential danger, I immediately halted the operation. We added the additional required tag line and established a protected area, ensuring that no one was allowed within a safe distance of the hoisted tree.

Just ten minutes later, the tree fell, shaking the ground where people had been standing only moments before. Thankfully, because of the swift action and adherence to proper safety protocols, no one was injured. This experience reinforced for me that safety is deeply personal. I firmly believe that what we do truly matters, and it is essential to speak up and take action whenever something does not look right. Every decision can make a difference in someone's life.



JOBSITE SAFETY CULTURE SURVEY

Posted on jobsites such as UCR UTLF and San Bernardino Valley College, McCarthy's safety culture survey gathers employee feedback to assess engagement, identify risks, and drive continuous improvement in workplace safety practices.



YOUR VOICE, OUR SAFETY

At McCarthy, safety is more than a priority—it's a core value that defines how we work every day. To continue building a culture where everyone feels empowered to be safe and look out for one another, we need your feedback.

TAKE A FEW MINUTES TO COMPLETE
OUR SAFETY CULTURE SURVEY



I promote a culture of jobsite safety by fostering open communication and modeling accountability - ensuring that safety is not just a policy, but a shared value that protects families and strengthens the entire project team.

EXPERIENCED WITH



COLLABORATIVE DELIVERY MODELS



CIVIC PROJECTS



WORKING ALONGSIDE CANNONDESIGN



PROJECTS COMPLETED OVER \$50 M



BRANDON DEKKER, MS, DBIA, LEED GA

Principal-in-Charge

Brandon has more than 22 years of management experience in the field of design and construction. His responsibilities include building relationships with clients while collaborating with the operations team to deliver "best-in-class" professional services and quality projects. With a focus on the overall success of the project, Brandon is an expert in the development of customized solutions for clients that satisfy their unique concerns and needs. Brandon sits on the Executive Board as the Immediate Past President for the Design-Build Institute of America's (DBIA) Western Pacific Region where he is also a Progressive Design-Build and Legislative Advocacy committee member.

Key Personnel for Phase 1 Work & Contractor Compliance for Phase 2 Work

CAREER SUMMARY

22 Years of Experience
18 Years with CannonDesign

EDUCATION

BA, Business
Vanguard University
MS, Construction Management
College of Engineering, Drexel University

LICENSES AND CERTIFICATIONS

- » Construction Management Assoc. of America (CMAA)
- » DBIA (Design-Build Institute of America), CA
- » LEED Green Associate
Lean Six Sigma Yellow Belt (LSSYB)

Relevant Project Experience

SAN BERNARDINO COUNTY 323 PUBLIC DEFENDER'S OFFICE

San Bernardino, CA | \$27.1 M | 36,949 sf | Commerical Workplace

Demolition of the existing four-story office building and design of a new facility that is inclusive of subterranean parking, a new three-story office building and associated site work. Design-Build with McCarthy.

Reference Information:

Brenton Rankin, *Project Manager* | (909) 387-5000 | brenton.rankin@res.sbcounty.gov
San Bernardino County, Real Estate Services Department |
385 N. Arrowhead Ave., 3rd Floor, San Bernardino, CA 92415

SAN BERNARDINO COUNTY VALLEY COMMUNICATIONS CENTER

San Bernardino, CA | \$128 M | 75,000 sf | County Building

The new Valley Communications Center will be a mission-critical facility that must be operational 365/24/7 under extreme conditions as the primary emergency operations center (EOC) and emergency communications center (ECC) in the San Bernardino Valley. The project is utilizing Design-Build delivery.

Reference Information:

Robert Gilliam, *Chief of Project Management* | (909) 915-5619 | robert.gilliam@res.sbcounty.gov
San Bernardino County, Real Estate Services Department |
385 N. Arrowhead Ave., 3rd Floor, San Bernardino, CA 92415

SAN BERNARDINO COMMUNITY COLLEGE DISTRICT, INSTRUCTIONAL STUDENT SERVICES BUILDING

San Bernardino, CA | \$82.6 M | 105,000 sf | Student Union/Center

Design-Build with McCarthy delivering a 105,000 sf, one-stop hub for essential student support services such as financial aid, registration, tutoring, counseling, career services and more. The building's location serves as a gateway to the campus and is designed for LEED Gold certification.

Reference Information:

Farrah Farzaneh, *Director of facilities, Planning & Construction* | ((909) 382-4090 | ffarzaneh@sbccd.cc.ca.us
San Bernardino Community College District |
114 South Del Rosa Drive, San Bernardino, CA 92408



SAN BERNARDINO COUNTY 323 PUBLIC DEFENDER'S OFFICE



SAN BERNARDINO VALLEY COMMUNICATIONS CENTER

LEARN MORE ABOUT BRANDON

CHAMPIONING PROGRESSIVE DESIGN-BUILD SUCCESS

Brandon brings a unique dual perspective to this project – as both a seasoned design management leader and a long-standing advocate for progressive design-build. Having helped shape the very legislation that advanced this delivery method, he feels a deep responsibility to ensure the County's project is a success and serves as a model for future endeavors. His role is not only to oversee the design process with precision and foresight, but also to create an environment where collaboration thrives and trust is the foundation. Brandon leads the team with a clear focus on aligning every decision to the County's goals, ensuring a seamless process and a finished project that demonstrates the value of progressive design-build. His commitment is to make this experience so successful that the County sees this as the preferred way to deliver projects moving forward.



Brandon with Senator Caballero and others after delivering testimony in support of bill SB 706



PV System at San Bernardino County, Valley Communication Center

INNOVATIVE ENERGY EFFICIENCY AND RESILIENCY

Brandon played an integral role in shaping the project's energy and operational strategy, working closely with the team to identify innovative design solutions that drive long-term efficiency and cost savings. His leadership helped establish strategies that will enable the facility to operate at near zero net energy, a remarkable achievement for a mission-critical building designed to function 24/7 under extreme conditions. By guiding the integration of photovoltaic systems, resilient utility infrastructure, and sustainable site features such as stormwater retention, Brandon ensured the County's investment extends far beyond initial construction – reducing downstream operational costs while enhancing performance. His forward-thinking approach to design management not only positions the building to meet LEED Gold certification, but also delivers a facility that exemplifies resiliency, sustainability, and lasting value.



Having championed Senate Bill 706 for progressive design-build, I feel a personal responsibility to ensure this project meets the County's vision while building trust, collaboration, and a truly memorable experience for everyone involved.

EXPERIENCED WITH



COLLABORATIVE DELIVERY MODELS



CIVIC PROJECTS



WORKING ALONGSIDE MCCARTHY



PROJECTS COMPLETED OVER \$50 M



KEVIN NYHOFF, ASSOC. AIA, AAA, AIBC

Lead Designer

A remarkable design leader, Kevin has consistently shaped dynamic, meaningful, sustainable and award-winning projects across essentially every market typology in his 30 years of practice. Kevin is well suited to lead the architectural visioning and design of the project. He is an engaging and receptive design leader who can layer critical adjacencies and functional requirements with thoughtful and creative design strategies to transform stakeholder and user needs into memorable architectural experiences. Kevin's attention to detail, care for the user experience and pursuit of design excellence will shape the physical response of our team.

Key Personnel for Phase 1 Work & Contractor Compliance for Phase 2 Work

CAREER SUMMARY

33 Years of Experience

4 Years with CannonDesign

EDUCATION

B, Environmental Design Studies/
Architecture

Dalhousie University

MArch, Architecture

Dalhousie University

LICENSES AND CERTIFICATIONS

- » Associate Member, American Institute of Architects (AIA)
- » Registered Architect, Alberta Association of Architects (AAA)
- » Registered Architect, Architectural Institute of British Columbia (AIBC)



RUHS MASTER PLAN, BEHAVIORAL HEALTH HOSPITAL, EMERGENCY DEPARTMENT, AND MEDICAL OFFICE BUILDING



WEST VALLEY COLLEGE PHYSICAL EDUCATION AND WELLNESS CENTER

Relevant Project Experience

RIVERSIDE UNIVERSITY HEALTH SYSTEM MASTER PLAN, BEHAVIORAL HEALTH HOSPITAL, EMERGENCY DEPARTMENT, AND MEDICAL OFFICE BUILDING

Moreno Valley, CA | \$395 M | 285,000 sf | Health Facilities

CannonDesign, McCarthy, and Trammell Crow, in partnership with Riverside University Health System, are leading a landmark healthcare campus expansion that reimagines emergency, outpatient, and behavioral health services – delivered through an innovative public-private partnership to meet the growing needs of the community.

Reference Information:

Angela Simpkins, *Chief Clinical Integration Officer* | (951) 515-6944 | asimpkins@ruhealth.org
Riverside University Health System Medical Center |
26520 Cactus Ave, Moreno Valley, CA 92555

SAN BERNARDINO COMMUNITY COLLEGE DISTRICT, INSTRUCTIONAL STUDENT SERVICES BUILDING

San Bernardino, CA | \$82.6 M | 105,000 sf | Student Union/Center

Design-Build with McCarthy delivering a 105,000 sf, one-stop hub for essential student support services such as financial aid, registration, tutoring, counseling, career services and more. The building's location serves as a gateway to the campus and is designed for LEED Gold certification.

Reference Information:

Farrah Farzaneh, *Director of facilities, Planning & Construction* | ((909) 382-4090 | ffarzaneh@sbccd.cc.ca.us
San Bernardino Community College District |
114 South Del Rosa Drive, San Bernardino, CA 92408

WEST VALLEY COLLEGE, PHYSICAL EDUCATION AND WELLNESS CENTER

Saratoga, CA | \$74 M | 116,132 sf | Recreation Center

The new wellness center will form an L-shaped building that wraps around and connects to West Valley College's existing main gymnasium. In addition to providing modern collegiate athletic, wellness and support facilities, the 116,132 gsf building will also include flexible classrooms, faculty offices and a Heritage Hall celebrating the college's history of athletic success. Design-Build delivery.

Reference Information:

Terrance DeGray, *Vice Chancellor, Facilities Development & Operations* | (804) 955-5512 | terrance.degray@wvm.edu
West Valley-Mission Community College District | 14000 Fruitvale Avenue, Saratoga, CA 95070

LEARN MORE ABOUT KEVIN

Kevin champions the project's conceptual vision and "story," steering big-picture thinking toward innovative and enduring solutions. He infuses the design with strategically creative moments that elevate the architecture beyond function, establishing a clear and compelling story that defines the project's character. Through his leadership, the design aspires to excellence – pioneering ideas, setting a benchmark for quality, and delivering final outcome that are both visionary and timeless.

CITY OF RIVERSIDE, SPC JESUS S. DURAN EASTSIDE LIBRARY

The SPC Jesus S. Duran Eastside Library is a full-service branch offering mixed-age literacy and learning programs. Inspired by the arched windows of the adjacent Cesar Chavez Community Center, the crescent-shaped pavilion provides a modern, lightweight counterpoint to its historic neighbor.

The site and landscape were designed to enhance community well-being, prioritizing access to nature, human wellness, and sustainability. The transparent exterior fosters physical and visual connections between the interior and site, creating a welcoming civic presence while supporting CPTED principles through passive supervision and a safe perimeter. A concave plan forms a natural arrival plaza and programming space, reinforcing the library as a gathering hub.

A perforated solar screen layered over the glazed facade improves energy performance, comfort, and security, with a community-designed pattern reflecting local cultural heritage. Elliptical cores conceal washrooms, meeting spaces, and building systems, extending to the roof to form mechanical enclosures.

The Community Room anchors the western end of the building as a flexible indoor/outdoor space, with large doors to an exterior patio, retractable power receptacles, and a trough sink to support maker and art activities. The library's design emphasizes flexibility, transparency, and connection, creating a vibrant civic hub that supports learning and engagement.



This project offers the opportunity to shape a civic hub that is functional, adaptable, and forward-looking. Combining a comprehensive master plan with a Progressive Design-Build approach aligns with my passion for innovative and sustainable environments, while directly supporting the County's mission.

EXPERIENCED WITH



COLLABORATIVE DELIVERY MODELS



CIVIC PROJECTS



WORKING ALONGSIDE MCCARTHY



PROJECTS COMPLETED OVER \$50 M



JOHN SON, AIA, LEED AP

Project Designer

John is a skilled and passionate designer with more than a decade of industry experience including award-winning projects. His design work has covered a vast array of building scales and typologies – from small, intimate projects to large campus master plans. Always focused on value for his clients, John fuses creative thinking, keen observation and refinement to generate contemporary architectural solutions that solve challenges and seize opportunities. John also excels at both digital rendering as well as hand-sketch illustration.

Key Personnel for Phase 1 Work & Contractor Compliance for Phase 2 Work

CAREER SUMMARY

24 Years of Experience
17 Years with CannonDesign

EDUCATION

BArch, Architecture
Cal Poly SLO
AS, Architecture
El Camino Jr College

LICENSES AND CERTIFICATIONS

- » Registered Architect, CA
- » AIA (American Institute of Architects), CA
- » LEED AP

Relevant Project Experience

CALIFORNIA DEPARTMENT OF GENERAL SERVICES, VETERANS HOME OF CALIFORNIA-YOUNTVILLE, SKILLED NURSING AND MEMORY CARE FACILITY

Town of Yountville, CA | \$269 M | 285,000 sf | Long Term Care

Design-Build project delivery of new 240-bed, 285,000 sf, OSHPD 2 skilled nursing and memory care facility. Located in a recognized historic district, the new building's design reflects the campus's architectural language as well as the project's LEED Gold target.

Reference Information:

Michael Siemering, *Project Director* | (916) 376-628 | Michael.Siemering@dgs.ca.gov
Department of General Services - California | 707 3rd St, West Sacramento, CA 95605

SANTA MONICA COLLEGE, MATH & SCIENCE BUILDING

Santa Monica, CA | \$86.7 M | 110,000 sf | Academic Environments

New, LEED Gold targeted, 110,000 sf Math and Science building featuring classroom, dry laboratory, office space, planetarium and rooftop observatory.

Reference Information:

Erica LeBlanc, *Dean of Academic Affairs and Education (RETIRED)* | (310) 420-0107 | ericaleblanc59@outlook.com
Santa Monica Community College District | 1900 Pico Blvd., Santa Monica, CA 90405

JUDICIAL COUNCIL OF CALIFORNIA, NEW SANTA CLARITA COURTHOUSE, CRITERIA ARCHITECT

Santa Clarita, CA | \$400 M | 278,000 sf | Courthouse

CannonDesign was selected to serve as criteria architect for the new courthouse, which will entail the site selection and acquisition and design and construction of a 24-courtroom facility of approximately 278,000 sf. The project will replace two county-owned court facilities and will allow the relocation of 19 dockets of caseload from another county courthouse.

Reference Information:

Kim Bobic, *Senior Project Manager* | (805) 249-0911 | Kim.Bobic-T@jud.ca.gov
Facilities Services, Judicial Council of California |
455 Golden Gate Avenue, San Francisco, CA 94102



SKILLED NURSING AND MEMORY CARE FACILITY



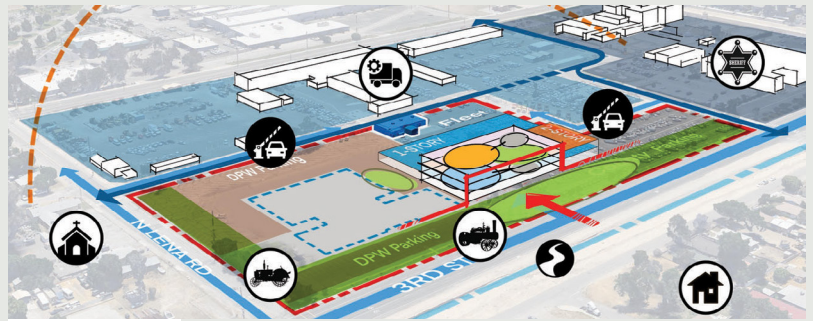
SANTA MONICA COLLEGE MATH & SCIENCE BUILDING

LEARN MORE ABOUT JOHN

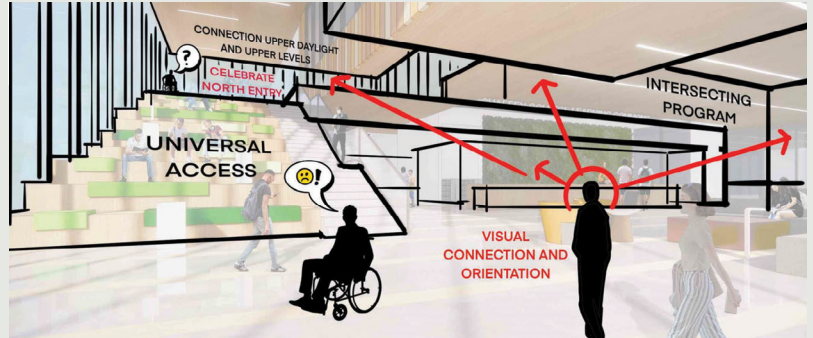
As a Project Designer, John's work is rooted in enhancing the quality of user experience. Through hand-sketching, technical drawings, and 3D modeling, environments are shaped to foster personal connection, emotional resonance, and community engagement. The goal is always to create architecture that feels intuitive, expressive, and deeply human.

For the San Bernardino County DPW Headquarters, this philosophy can guide the development of a civic campus that reflects the County's operational needs and public-facing mission. Amenity spaces can be crafted to encourage informal collaboration and strengthen team cohesion. Public zones can be welcoming and transparent, with material and lighting strategies that promote wellness and accessibility. Circulation paths and spatial adjacencies will be studied to support intuitive movement and operational clarity, while architectural and landscape elements can be integrated to create a setting for meaningful engagement between staff and community.

This project will be an opportunity to deliver a civic environment that is efficient, resilient, and emotionally resonant – a place where people feel supported, connected, and proud to belong.



Site Context and Opportunities



Designing for Connection and Collaboration



User Experience Driven Design



This project offers the County an opportunity to create a civic facility that supports essential public services while fostering a welcoming, emotionally resonant environment for staff and community – and contributing to that vision is what makes this pursuit meaningful.

EXPERIENCED WITH



COLLABORATIVE DELIVERY MODELS



CIVIC PROJECTS



WORKING ALONGSIDE MCCARTHY



PROJECTS COMPLETED OVER \$50 M



JENNIFER BERMUDEZ, CHID, NCIDQ, CID, IIDA, LEED AP BD +C

Project Manager

Jennifer has managed more than 300 projects, with a special knack for complex design and planning. Perhaps that's why her innovative, cost efficient solutions have shaped new standards for clients. In addition to her project management prowess, Jennifer is a certified interior designer with 23-plus year of experience.

Key Personnel for Phase 1 Work & Contractor Compliance for Phase 2 Work

CAREER SUMMARY

23 Years of Experience
3 Years with CannonDesign

EDUCATION

BFA, Interior Architectural Design
CSU Long Beach

LICENSES AND CERTIFICATIONS

- » Certified Healthcare Interior Designer (CHID), CA
- » Certified Interior Designer, CA
- » LEED AP BD+C

Relevant Project Experience

RIVERSIDE UNIVERSITY HEALTH SYSTEM MASTER PLAN, BEHAVIORAL HEALTH HOSPITAL, EMERGENCY DEPARTMENT, AND MEDICAL OFFICE BUILDING

Moreno Valley, CA | \$395 M | 285,000 sf | Health Facilities

CannonDesign, McCarthy, and Trammell Crow, in partnership with Riverside University Health System, are leading a landmark healthcare campus expansion that reimagines emergency, outpatient, and behavioral health services – delivered through an innovative public-private partnership to meet the growing needs of the community.

Reference Information:

Angela Simpkins, *Chief Clinical Integration Officer* | (951) 515-6944 | asimpkins@ruhealth.org
Riverside University Health System Medical Center |
26520 Cactus Ave, Moreno Valley, CA 92555

RIVERSIDE COMMUNITY COLLEGE DISTRICT, MORENO VALLEY COLLEGE LIBRARY LEARNING RESOURCE CENTER

Moreno, CA | \$83.7 M | 79,000 sf | Library

New 79,000 gsf resource center bringing academic, library, and student services into a one-stop location at the heart of campus. In addition to library and learning resource functions, the proposed facility will be a center of activity for the college and includes space for the Student Activity Center and Academic Resource Center.

Reference Information:

Hussain Agah, *Associate Vice Chancellor* | (310) 749-2378 | hussain.agah@rccd.edu
Riverside Community College District | 4800 Magnolia Avenue, Riverside, CA 92506

LOS ANGELES UNIFIED SCHOOL DISTRICT, LINCOLN HIGH SCHOOL COMPREHENSIVE MODERNIZATION PROJECT

Los Angeles, CA | \$200 M | 217,085 sf | Academic Environment

Revitalization of historic Lincoln campus focuses on the resurgence and renewal of existing buildings to provide modern tools and resources that are aligned with learning in the future. Design-Build delivery.

Reference Information:

Russell McCarley, *Design Manger* | (213) 241-6459 | RUSSELL.MCCARLEY@lausd.net
Los Angeles Unified School District | 333 S. Beaudry Ave., 23rd Flr., Los Angeles, CA 90017



RUHS MASTER PLAN, BEHAVIORAL HEALTH HOSPITAL, EMERGENCY DEPARTMENT, AND MEDICAL OFFICE BUILDING



LINCOLN HIGH SCHOOL COMPREHENSIVE MODERNIZATION PROJECT

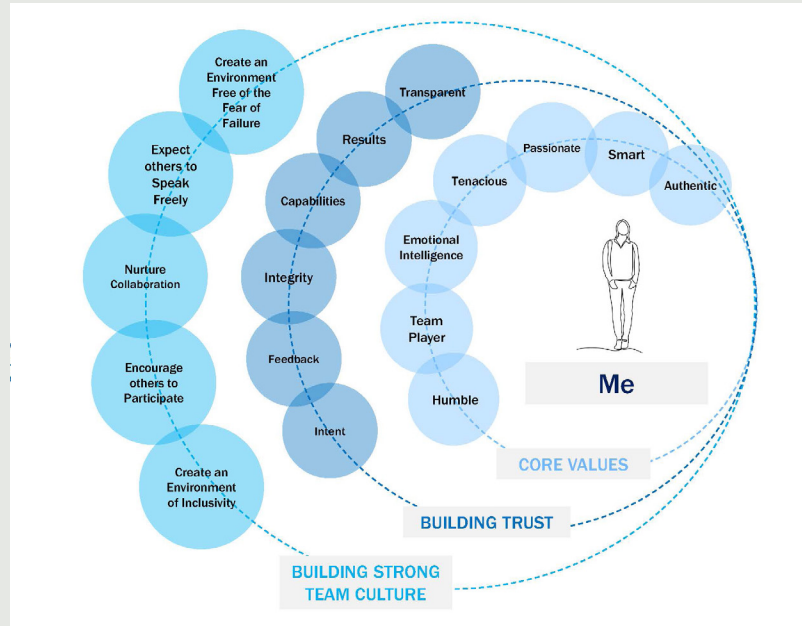
LEARN MORE ABOUT JENNIFER

LEADERSHIP

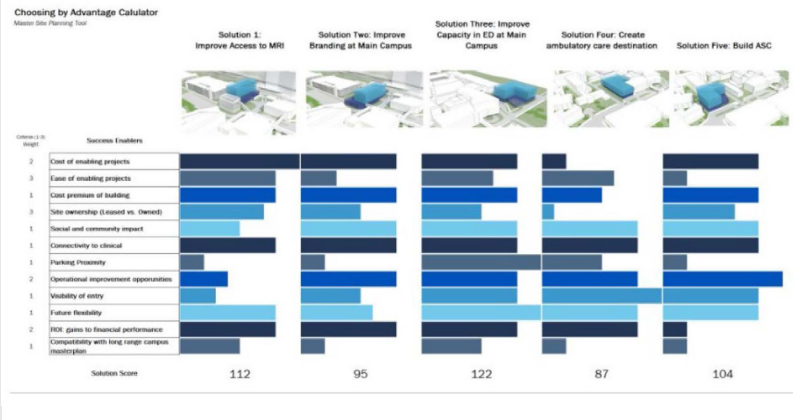
Circles of success are built on the belief that true leadership means creating an inclusive environment where everyone feels valued, supported, and empowered to thrive. Jennifer’s approach centers on meeting people where they are, understanding their needs, and fostering a culture of trust that encourages authentic collaboration. In this environment, diverse perspectives are celebrated, resulting in stronger ideas and more resilient outcomes. By cultivating balance, peace, and coherence – qualities that create harmony – Jennifer strives to unite people around a shared purpose. Harmony is not the absence of differences but the integration of them, allowing teams to move forward with clarity and confidence.

DECISION MAKING

Jennifer believes in an evidence-based approach that combines data, experience, and diverse perspectives. By encouraging a mix of viewpoints, she creates space for innovation and ensure decisions are inclusive, transparent, and well-informed. This not only produces outcomes that are both beautiful and practical but also builds consensus and trust among stakeholders. Equally important is aligning individual goals with the County’s broader mission and vision. When people see how their contributions connect to a larger purpose, they are more engaged and collaborative – resulting in solutions that are functional, meaningful, and sustainable.



Choosing by Advantage (CBA)



I'm dedicated to continuous learning and staying current on industry advancements, which allows me to bring fresh ideas to every project. I focus on creating environments that enhance employee experience and foster collaboration. I take pride in being a trusted partner in transforming spaces.

EXPERIENCED WITH

- COLLABORATIVE DELIVERY MODELS
- WORKING ALONGSIDE MCCARTHY
- PROJECTS COMPLETED OVER \$50 M



ERIC COREY FREED, RA, LEED FELLOW, LFA, ECODISTRICTS AP

Sustainability Lead

Eric is a nationally known thought leader in sustainable design. He leads discussions on sustainability and brings a broad depth of knowledge in net zero energy, resiliency, health and wellness along with comprehensive experience with the various green rating systems that track sustainability for buildings and campuses. Named one of the "10 Most Influential Green Architects," Eric brings a unique combination of practical experience, academic research, and thought leadership to the team. In 2024, he was named the Net Zero Trailblazer for Innovation.

Key Personnel for Phase 1 Work & Contractor Compliance for Phase 2 Work

CAREER SUMMARY

34 Years of Experience
6 Years with CannonDesign

EDUCATION

BArch, Architecture
Temple University
MA, Ecological Design
San Francisco Institute of
Architecture

LICENSES AND CERTIFICATIONS

- » Registered Architect: CA, AZ, NM, OR
- » LEED Fellow
- » Living Future AP
- » EcoDistricts AP

Relevant Project Experience

SAN BERNARDINO COUNTY VALLEY COMMUNICATIONS CENTER

San Bernardino, CA | \$128 M | 75,000 sf | County Building

The new Valley Communications Center will be a mission-critical facility that must be operational 365/24/7 under extreme conditions as the primary emergency operations center (EOC) and emergency communications center (ECC) in the San Bernardino Valley. The project is utilizing Design-Build delivery.

Reference Information:

Robert Gilliam, *Chief of Project Management* | (909) 915-5619 | robert.gilliam@res.sbcounty.gov
San Bernardino County, Real Estate Services Department |
385 N. Arrowhead Ave., 3rd Floor, San Bernardino, CA 92415

STATE OF CALIFORNIA, DEPARTMENT OF GENERAL SERVICES, GREGORY BATESON BUILDING RENOVATION

Sacramento, CA | \$159 M | 294,000 sf | Commercial Workplace

Comprehensive Progressive Design-Build with McCarthy delivered renovation of the historically significant, 294,000 sf Gregory Bateson Building. This project targets Net Zero Energy and LEED Platinum.

Reference Information:

Mike Meredith, *Program Manager* | (916) 376-1661 | michael.meredith@dgs.ca.gov
Department of General Services - California | 707 3rd St, West Sacramento, CA 95605

CALIFORNIA DEPARTMENT OF GENERAL SERVICES, VETERANS HOME OF CALIFORNIA-YOUNTVILLE, SKILLED NURSING AND MEMORY CARE FACILITY

Town of Yountville, CA | \$269 M | 285,000 sf | Long Term Care

Design-Build project delivery of new 240-bed, 285,000 sf, OSHPD 2 skilled nursing and memory care facility. Located in a recognized historic district, the new building's design reflects the campus's architectural language as well as the project's LEED Gold target.

Reference Information:

Michael Siemering, *Project Director* | (916) 376-628 | Michael.Siemering@dgs.ca.gov
Department of General Services - California | 707 3rd St, West Sacramento, CA 95605



GREGORY BATESON BUILDING RENOVATION



SKILLED NURSING AND MEMORY CARE FACILITY

LEARN MORE ABOUT ERIC

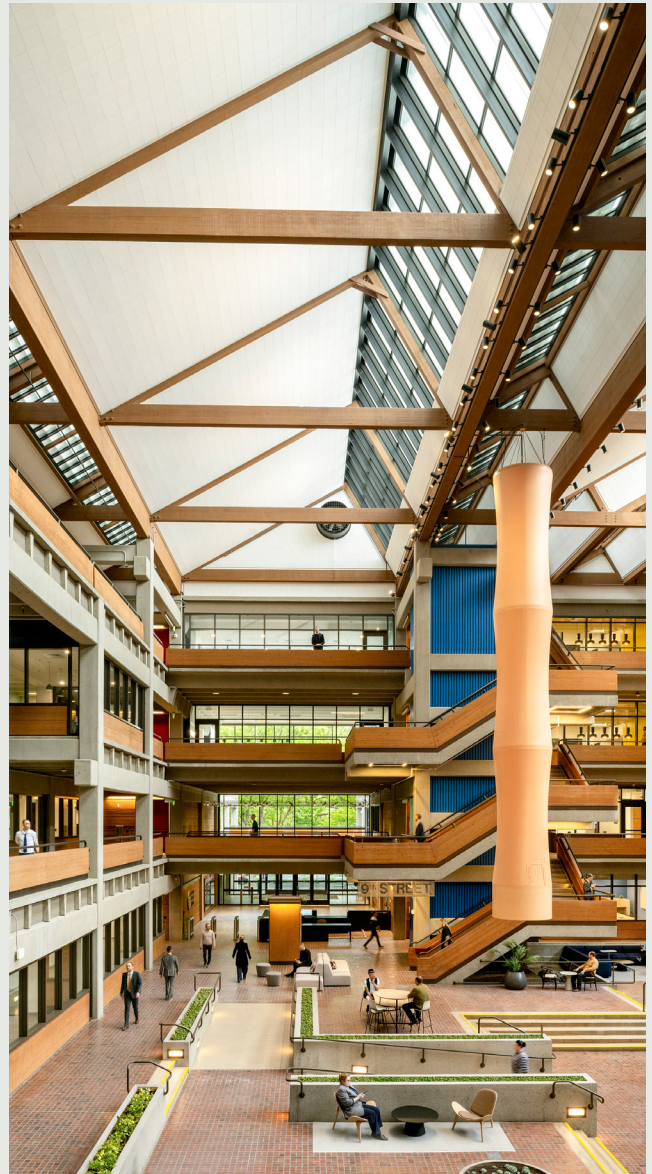
MEETING OR EXCEEDING SUSTAINABILITY GOALS

Many municipal clients set bold sustainability targets, yet few achieve meaningful progress. Too often, there is a gap between stated goals and actionable results. This raises a critical question: How can the new DPW Headquarters not only meet but advance San Bernardino County's ambitious sustainability objectives – including net-zero energy, electrification, and healthy, low-impact materials – while setting a new standard for public facilities?

We propose a tailored, collaborative process that puts sustainability at the center of design, rather than treating it as an add-on. Through this approach, we will identify opportunities to reduce operational costs, improve energy efficiency, and create a healthier, more productive environment for staff. Beyond environmental performance, this building will serve as a tangible symbol of the County's commitment to innovation and responsibility, attracting top talent and strengthening community pride.

By embedding sustainability into every decision – from materials selection to systems design to occupant experience – the DPW Headquarters will become a model for forward-thinking public infrastructure. It will demonstrate that ambitious goals can be achieved when design, operations, and community impact work together in harmony, leaving a lasting legacy for the County and its residents.

The State of California, Department of General Services, Gregory Bateson Building will achieve LEED Platinum certification, thanks to impressive sustainable strategies such as energy performance 18% better than the baseline. The building is also expected to reduce indoor water use by 40% and connect to the city power grid. Additionally, it's harnessing Sacramento Municipal Utility District's (SMUD)'s SolarShares, a program that manages solar power for businesses within their jurisdiction – allowing the project to target Net Zero Energy.



This project is an opportunity to display San Bernardino County's abundant natural landscape and commitment to a regenerative and resilient future.

EXPERIENCED WITH



COLLABORATIVE DELIVERY MODELS



CIVIC PROJECTS



WORKING ALONGSIDE MCCARTHY



PROJECTS COMPLETED OVER \$50 M



EMILY WRIGHT, IIDA, NCIDQ

Interior Designer

Emily is an accomplished interior designer with a keen focus on enhancing the user experience through the built environment. Her passion for creating spaces that seamlessly blend aesthetics with functionality has been a driving force throughout her career. Serving as a dedicated resource for healthy material selection, Emily brings a conscientious approach to her projects, ensuring a sustainable and wellness-based design philosophy.

Key Personnel for Phase 1 Work & Contractor Compliance for Phase 2 Work

CAREER SUMMARY

10 Years of Experience
10 Years with CannonDesign

EDUCATION

BArch, Interior Architecture
University of Oregon

LICENSES AND CERTIFICATIONS

» NCIDQ, OR

Relevant Project Experience

WEST VALLEY COLLEGE, PHYSICAL EDUCATION AND WELLNESS CENTER

Saratoga, CA | \$74 M | 116,132 sf | Recreation Center

The new wellness center will form an L-shaped building that wraps around and connects to West Valley College’s existing main gymnasium. In addition to providing modern collegiate athletic, wellness and support facilities, the 116,132 gsf building will also include flexible classrooms, faculty offices and a Heritage Hall celebrating the college’s history of athletic success. Design-Build delivery.

Reference Information:

Terrance DeGray, Vice Chancellor, Facilities Development & Operations | (804) 955-5512 | terrance.degray@wvm.edu
West Valley-Mission Community College District | 14000 Fruitvale Avenue, Saratoga, CA 95070

HILLSBORO CIVIC CENTER RENOVATION

Hillsboro, OR | \$6.1 M | 19,600 sf | Municipal/Community/Public Buildings

An inviting welcome center for the Community Development Department to serve customers with their development plans as well as land use and permitting business within the City of Hillsboro. Amenities include permit center, conference spaces, collaboration spaces, staff offices, cubicles and storage.

Reference Information:

Angie Lu, Project Coordinator | (503) 681-5268 | Angie.Lu@hillsboro-oregon.gov
City of Hillsboro Public Works Department 4415 NE 30th Ave, Hillsboro, OR 97124

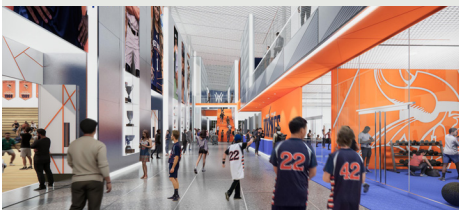
PORTLAND STATE UNIVERSITY, VANPORT BUILDING

Portland, OR | \$80 M | 175,000 sf | Education/Civic Environment

With a collective commitment to enhance the City of Portland through sustainable and responsible development, four significant Portland institutions join in one building to share workplace resources. Complementing each other’s programs and collaborating to expand community impact under one roof allows each tenant to become greater than the sum of its parts.

Reference Information:

Reference available upon request.



PHYSICAL EDUCATION AND WELLNESS CENTER



LIFE SCIENCES BUILDING

LEARN MORE ABOUT EMILY



CREATING AN ENGAGING SPACE FOR END-USERS

Emily will work to understand San Bernardino County's goals through visioning exercises and by developing guiding principles that inform the project's direction. She will help shape how the space supports both staff and community members, ensuring it becomes a tool for communicating the organization's values and fostering meaningful engagement.

At the Hillsboro Civic Center, our team assisted the client in combining their Economic Development office with the Planning and Permitting Department service counter, creating a central point of access through their Permit and Conference Center. This space was designed to welcome community members, showcase locally made products, and serve as a visitor center for those interested in building within the city.

This project also integrated two floors of departments into a single, cohesive space, increasing internal collaboration while achieving the client's goal of creating a functional, inviting environment that reflected the pride and identity of the Hillsboro community.



I'm excited about projects that support those who keep our cities running. Their contributions deserve recognition and workplaces they can be proud of. These spaces also connect with the broader community, fostering civic pride and a welcoming environment for all.

EXPERIENCED WITH



COLLABORATIVE DELIVERY MODELS



CIVIC PROJECTS



WORKING ALONGSIDE MCCARTHY



PROJECTS COMPLETED OVER \$50 M



CHRIS McCAMPBELL

Experiential Graphic Designer

Chris is a graphic designer with more than 20 years of experience. He has lent his creative and technical skills to projects in the civic, healthcare, education and sports markets. His work includes wayfinding, environmental graphics and interiors solutions and general project management and oversight in these areas. Outside of his role with CannonDesign, Chris is passionate about shaping the next generation of environmental graphic designers – he has served as an adjunct professor at both San Diego State University and Design Institute of San Diego. This passion for his craft fuels creativity, making Chris a valuable asset to any team.

Key Personnel for Phase 1 Work & Contractor Compliance for Phase 2 Work

CAREER SUMMARY

21 Years of Experience
6 Years with CannonDesign

EDUCATION

MFA, Graphic Design, Maryland Institute College of Art
BA, Graphic Design, San Diego State University

LICENSES AND CERTIFICATIONS

» Society for Experiential Graphic Design (SEGD)

Relevant Project Experience

SAN BERNARDINO COUNTY VALLEY COMMUNICATIONS CENTER

San Bernardino, CA | \$128 M | 75,000 sf | County Building

The new Valley Communications Center will be a mission-critical facility that must be operational 365/24/7 under extreme conditions as the primary emergency operations center (EOC) and emergency communications center (ECC) in the San Bernardino Valley. The project is utilizing Design-Build delivery.

Reference Information:

Robert Gilliam, Chief of Project Management | (909) 915-5619 | robert.gilliam@res.sbcounty.gov
San Bernardino County, Real Estate Services Department |
385 N. Arrowhead Ave., 3rd Floor, San Bernardino, CA 92415

STATE OF CALIFORNIA, DEPARTMENT OF GENERAL SERVICES, GREGORY BATESON BUILDING RENOVATION

Sacramento, CA | \$159 M | 294,000 sf | Commercial Workplace

Comprehensive Progressive Design-Build with McCarthy delivered renovation of the historically significant, 294,000 sf Gregory Bateson Building. This project targets Net Zero Energy and LEED Platinum.

Reference Information:

Mike Meredith, Program Manager | (916) 376-1661 | michael.meredith@dgs.ca.gov
Department of General Services - California | 707 3rd St, West Sacramento, CA 95605

SAN BERNARDINO COMMUNITY COLLEGE DISTRICT, INSTRUCTIONAL STUDENT SERVICES BUILDING

San Bernardino, CA | \$ 82.67 M | 105,000 sf | Student Union/Center

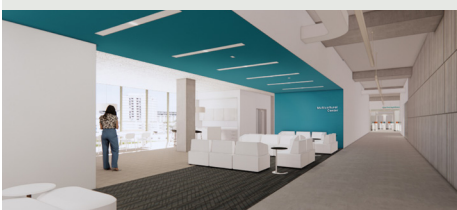
Design-Build with McCarthy delivering 105,000 sf, one-stop hub for essential student support services such as financial aid, registration, tutoring, counseling, career services and more. The building's location serves as a gateway to the campus and is designed for LEED Gold certification.

Reference Information:

Farrah Farzaneh, Director of facilities, Planning & Construction | (909) 382-4090 | ffarzaneh@sbccd.cc.ca.us
San Bernardino Community College District | 114 South Del Rosa Drive, San Bernardino, CA 92408



GREGORY BATESON BUILDING RENOVATION



INSTRUCTIONAL STUDENT SERVICES BUILDING

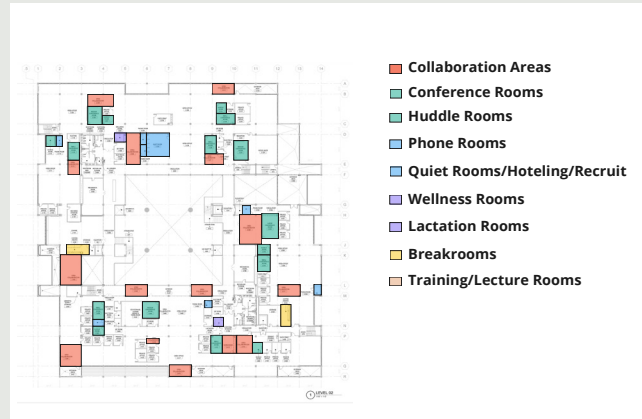
LEARN MORE ABOUT CHRIS

IMPROVING WAYFINDING IS MY PASSION

An effective wayfinding and signage program was integrated and complemented the environment and architectural characteristics of the Gregory R. Bateson facility. Careful consideration was given during the design process to integrate the signage program into the architecture and interiors to minimize visual clutter and provide a clear system for wayfinding. Throughout our design process, we aligned signage requirements with the interior concept and paid respect to the historic quality of special finishes and elements that would remain in the building. The proposed signage and wayfinding program had a direct positive impact on the overall function of the facility and establish a distinct and memorable identity and character for the project.

Due to the historical nature of the Gregory R. Bateson Building, the signage and wayfinding program included restoration of existing fabric wayfinding signage, to the extent possible, maintaining and reusing existing directory cases, and additional identification and building orientation devices to improve wayfinding throughout.

Signage materials and colors reflected the Bateson Building finishes to help establish a cohesive experience with interiors and celebrated the unique character of the building. The adjacent Natural Resources Headquarters Building on P Street influenced the signage and wayfinding design due to the sharing of certain amenity spaces and common uses among the buildings. A color-coding system was implemented with room identification signage to signify certain room uses and aid wayfinding throughout the building. Signage design embraced sustainability through the implementation of sustainable materials (i.e. recyclable materials, low VOC paints, and sustainable products), wherever possible, to celebrate the foundation on which the Bateson Building was established.



Implementing a strategic signage and wayfinding system for this project can help improve the building experience for DPW staff and visitors, making this facility one of the best places to work in the County.

EXPERIENCED WITH



COLLABORATIVE DELIVERY MODELS



CIVIC PROJECTS



WORKING ALONGSIDE McCarthy



PROJECTS COMPLETED OVER \$50 M

IMEG CORP | MEP ENGINEER

IMEG Corp is a leading national engineering and design consulting firm specializing in high-performance building systems, infrastructure, and technology solutions. With a history spanning more than 60 years, IMEG offers comprehensive services in mechanical, electrical, structural, civil, and environmental engineering, as well as technology and consulting services. The firm serves a diverse range of markets, including government, industrial, healthcare, education, science and technology, and commercial sector.

IMEG is recognized for its client-focused approach, technical excellence, and commitment to sustainable, innovative solutions. The firm's multidisciplinary teams collaborate closely with clients, architects, and contractors to deliver integrated designs that meet

the unique needs of each project. With offices located throughout the United States, IMEG leverages local expertise and national resources to provide responsive service and deliver successful outcomes on projects of all sizes and complexities. IMEG's dedication to quality, integrity, and continuous improvement has established the firm as a trusted partner in shaping resilient, efficient, and future-ready environments.

Here are some of the projects that IMEG has provided services on for San Bernardino County: Colorado River Sheriff's Station Remodel, 412 Hospitality Lane Improvements, Data Center Fire Suppression Upgrade and Replacement, and Commercial Building Assessment for New High Desert Fire District Headquarters.

PSOMAS | CIVIL ENGINEER

Psomas brings over 75 years of expertise delivering innovative, sustainable solutions for large-scale entertainment, transportation, and mixed-use projects across California. Their longstanding partnership with McCarthy and CannonDesign has produced numerous high-profile infrastructure developments, ensuring coordinated site design, seamless construction integration, and proactive problem-solving. Psomas' multidisciplinary teams leverage advanced BIM and GIS for precision and rapid

approvals, collaborating early with public agencies and project teams to align with client goals. Recognized by ACEC and APWA for civil innovation and sustainability, Psomas delivers resilient, high-performance infrastructure that meets demanding project requirements.

Psomas worked on the 323 Public Defender's Office project with McCarthy | CannonDesign and is currently on the Valley Communications Center with CannonDesign.

COFFMAN ENGINEERS | STRUCTURAL ENGINEER

Coffman Engineers is a nationally recognized, multidiscipline engineering consulting firm offering comprehensive services in civil, structural, mechanical, electrical, and fire protection engineering. Founded in 1979, Coffman has grown to include offices across the United States, enabling the firm to serve clients in a wide range of markets, including government, industrial, healthcare, education, energy, commercial, and sectors. The firm is distinguished by its collaborative approach, bringing together diverse technical expertise to deliver integrated solutions tailored to each project's unique needs.

Coffman Engineers is committed to technical excellence, innovation, and responsive client service. The firm's professionals work closely with clients, architects, and contractors to ensure that every project achieves its goals for quality, efficiency, and sustainability. Coffman's portfolio includes new construction, renovations, and complex infrastructure projects, reflecting a deep understanding of both traditional and emerging technologies. With a focus on building lasting relationships and delivering value, Coffman Engineers has established a reputation for reliability, integrity, and leadership in the engineering industry. The firm's dedication to professional development, safety, and community engagement further underscores its role as a trusted partner in shaping the built environment.

JENSEN HUGHES | CODE CONSULTANT

Jensen Hughes is recognized as a global leader in engineering, consulting, and technology services, with a core mission centered on protecting what matters most through technical excellence. The firm collaborates with architects, government agencies, business owners, and stakeholders on thousands of projects worldwide, delivering specialized expertise in fire protection, life safety, and code consulting. Jensen Hughes applies in-depth knowledge across various disciplines to address the unique fire and life safety challenges present in complex environments such as airports, healthcare facilities, and large-scale commercial developments. Their services include the design of highly effective emergency

systems, preservation of architectural integrity, and comprehensive support for operational safety within stringent regulatory frameworks.

Jensen Hughes is distinguished by its ability to integrate technical rigor with practical solutions, ensuring that clients' projects meet the highest standards of safety and compliance. Their multidisciplinary approach and commitment to innovation have established Jensen Hughes as a trusted advisor and partner for organizations seeking to navigate the complexities of fire protection, life safety, and code compliance on a global scale.

THE CONSULTING GROUP (TCG) | SECURITY / LOW VOLTAGE

The Consulting Group is a minority owned small business born out of the passion of our founders, who have grown to be leaders in the Technology and Security Consulting & Engineering industry. Their board-certified and accredited professionals bring over three decades of expertise, delivering innovative solutions tailored to their clients operational needs.

TCH has extensive experience designing integrated systems for critical infrastructure, commercial buildings, data centers, and

government facilities. With broad public-sector experience, TCH has helped agencies nationwide develop scalable security and technology strategies.

They specialize in turning complex requirements into practical, future-ready solutions that ensure long-term resilience.

TCH is currently on the Valley Communications Center with CannonDesign.

MOORE IACOFANO GOLTSMAN (MIG) | LANDSCAPE ARCHITECT

MIG is a multidisciplinary planning, design, management, and communications firm dedicated to creating innovative, sustainable, and inclusive environments. With a team of professionals in landscape architecture, urban planning, civil engineering, and environmental design, MIG serves public and private clients across the United States. The firm's expertise spans community planning, parks and recreation, urban design, transportation, and

environmental restoration, with a focus on engaging stakeholders and fostering collaboration throughout the project lifecycle. MIG is recognized for its commitment to equity, resilience, and creative problem-solving, delivering tailored solutions that enhance the quality of life in communities and support long-term environmental stewardship.

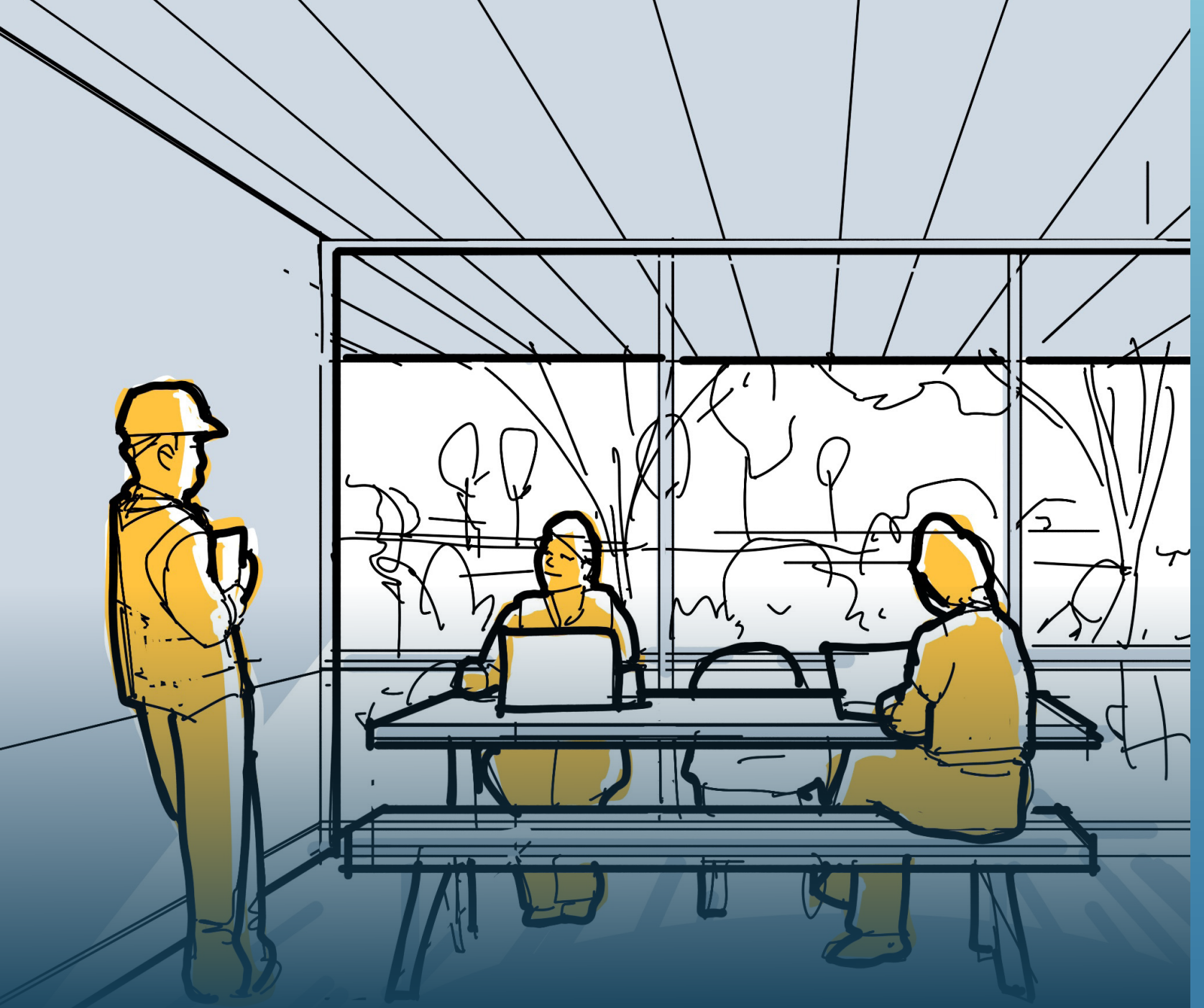
RESONANCE ACOUSTICS | ACOUSTICS CONSULTANT

Resonance Acoustics is a specialized consulting firm providing expert services in acoustics, noise, and vibration control for a wide range of environments. With a team of experienced acousticians and engineers, Resonance Acoustics delivers tailored solutions for architectural, environmental, and industrial projects, ensuring optimal sound quality and regulatory compliance. The firm's expertise encompasses room acoustics, sound isolation, environmental noise assessments, and vibration mitigation, serving clients in sectors such as public, education, healthcare, performing arts, commercial, and residential development.

Resonance Acoustics is recognized for its collaborative approach, technical excellence, and commitment to client satisfaction. By integrating advanced modeling, measurement, and analysis techniques, the firm addresses complex acoustic challenges and delivers innovative, cost-effective results. Through a dedication to quality, integrity, and responsive service, Resonance Acoustics has established itself as a trusted partner in creating environments that balance functionality, comfort, and acoustic performance.

Resonance is currently on the Valley Communications Center with CannonDesign.

Page intentionally blank.



03

—
PROJECT
UNDERSTANDING

