

EXHIBIT "A"
(LEASE AREA)

Parcel 1

That portion of the Southeast ¼ of Section 29, Township 1 North, Range 5 West, San Bernardino Meridian, in the County of San Bernardino, State of California, according to the official plat thereof, more particularly described as follows:

Beginning at the Northeast corner of said Southeast ¼, as shown on County Surveyor's Plat 10100-1, on file in the San Bernardino County Surveyor's Office;

Thence South 89°37'51" West along the North line of said Southeast ¼ a distance of 1802.50 feet to a point;

Thence South 00°22'09" East a distance of 129.60 feet to a point on a line that is parallel with and 129.60 feet southerly, measured at right angles, from the North line of said Southeast ¼, said point being the **True Point of Beginning**;

Thence South 89°27'15" West a distance of 156.36 feet;

Thence North 84°23'51" West a distance of 68.83 feet;

Thence North 75°00'19" West a distance of 75.54 feet;

Thence North 74°27'29" West a distance of 120.58 feet;

Thence South 03°15'43" West a distance of 125.13 feet;

Thence South 89°20'16" West a distance of 49.86 feet;

Thence South 01°19'54" West a distance of 31.36 feet;

Thence North 89°56'37" East a distance of 246.94 feet;

Thence North 77°52'52" East a distance of 27.58 feet;

Thence North 87°18'58" East a distance of 18.71 feet;

Thence North 89°39'52" East a distance of 72.51 feet;

Thence South 88°09'30" East a distance of 75.72 feet;

Thence North 54°15'59" East a distance of 39.06 feet;

Thence North 00°38'06" West a distance of 72.06 feet, more or less, to the **True Point of Beginning**.

Parcel 1 contains 1.10 acres, more or less.

As shown on Exhibit "B" and by this reference made a part thereof.

This legal description was prepared
by me or under my direction.

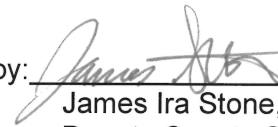
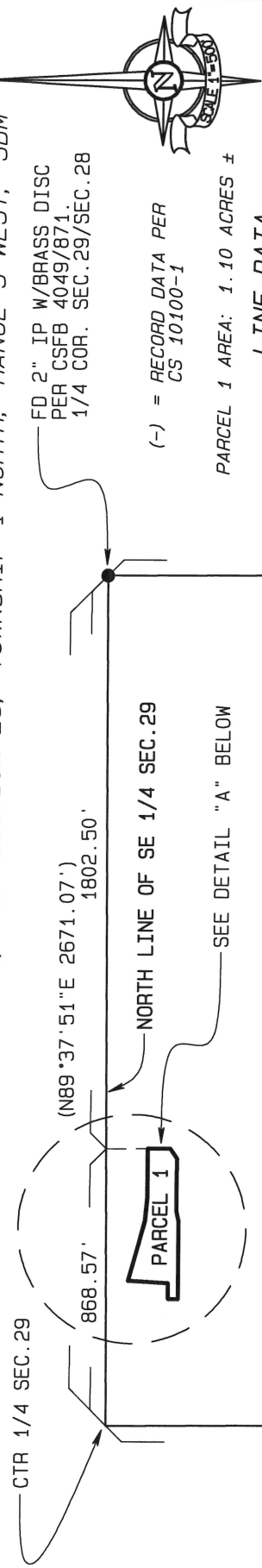
by:  11/04/21
James Ira Stone, PLS 9075 Dated
Deputy County Surveyor



EXHIBIT "B"

THAT PORTION OF THE SOUTHEAST 1/4 OF SECTION 29, TOWNSHIP 1 NORTH, RANGE 5 WEST, SBM

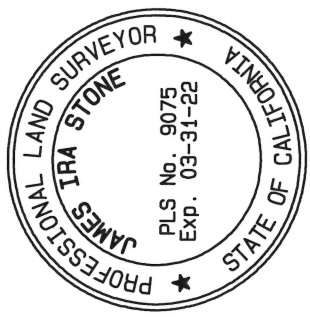


PARCEL 1 AREA: 1.10 ACRES ±

(-) = RECORD DATA PER CS 10100-1

LINE DATA

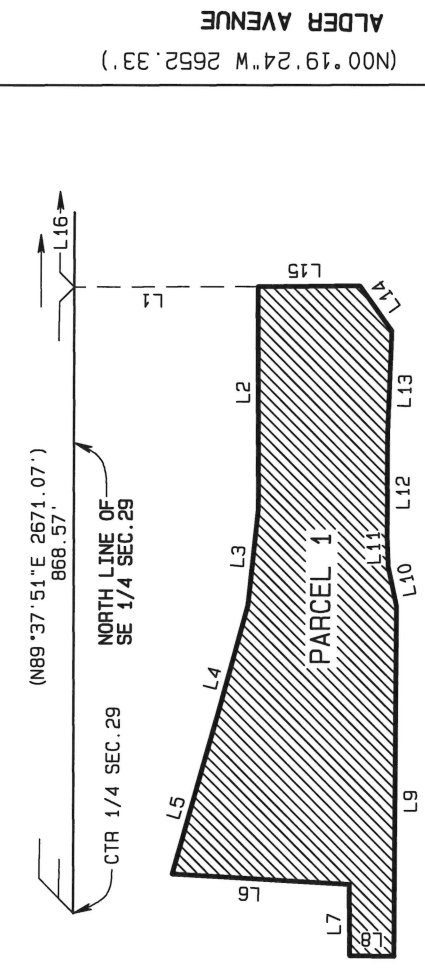
L1 =	S00°22'09"E	129.60'
L2 =	S89°27'15"W	156.36'
L3 =	N84°23'51"W	68.83'
L4 =	N75°00'19"W	75.54'
L5 =	N74°27'29"W	120.58'
L6 =	S03°15'43"W	125.13'
L7 =	S89°20'16"W	49.86'
L8 =	S01°19'54"W	31.36'
L9 =	N89°56'37"E	246.94'
L10 =	N77°52'52"E	27.58'
L11 =	N87°18'58"E	18.71'
L12 =	N89°39'52"E	72.51'
L13 =	S88°09'30"E	75.72'
L14 =	N54°15'59"E	39.06'
L15 =	N00°38'06"W	72.06'
L16 =	N89°37'51"E	1802.50'



This plat was prepared by me or under my direction.

By: *James Ira Stone* 11/04/21

James Ira Stone, PLS 9075 Dated
Deputy County Surveyor



DETAIL "A"
NOT TO SCALE

ALDER AVENUE
(N00°19'24"W 2652.33')

FD 2" IP W/COOT BRASS
DISC PER CR 274/102.
SE COR. SEC. 29

FD 2" IP W/SBCO BRASS
DISC PER CSFB 4049/505
1/4 COR. SEC. 29/SEC. 32

WEST LINE OF SE 1/4 SEC. 29

NORTH LINE OF SE 1/4 SEC. 29

SEE DETAIL "A" BELOW

(N89°37'51"E 2671.07')
1802.50'

(N89°37'51"E 2671.07')
868.57'

(N89°41'46"E 2668.62')

(N00°22'35"W 2649.28')

CTR 1/4 SEC. 29

868.57'