

SIGNING AND STRIPING NOTES

- 8 PAINT 4-INCH WIDE SOLID WHITE LINE.

PAVING CONSTRUCTION NOTES

- 1 CONSTRUCT 4" ASPHALT CONCRETE PAVEMENT OVER 5" AGGREGATE BASE OVER COMPACTED SUBGRADE PER RECOMMENDATIONS OF THE GEOTECHNICAL REPORT. CONSTRUCT EDGE OF PAVEMENT PER APPLICABLE CONDITION, SEE DETAIL 2 ON SHEET 33.

LEGEND

- PROPOSED ASPHALT PAVEMENT
- EXISTING CONCRETE PAVEMENT TO REMAIN
- ADD-ALTERNATE #2 LIMITS OF WORK

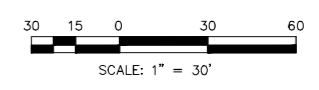
COORDINATES		
POINT #	NORTHING	EASTING
161	1888216.89	6747605.80
162	1888208.73	6747612.32
163	1888224.88	6747568.76
164	1888234.94	6747583.39
165	1888340.77	6747570.17
166	1888338.17	6747549.33

SHEET NOTES

- FOR GENERAL NOTES, LEGEND, AND ABBREVIATIONS, SEE SHEET 1.
- FOR CONSTRUCTION DETAILS, SEE SHEETS 32 AND 33.
- FOR GRADING PLANS, SEE SHEETS 22 TO 31.
- CONTRACTOR TO INCLUDE CONSTRUCTION OF THIS PARKING LOT AND ROADWAY AS AN ADD ALTERNATE IN THE BID DOCUMENTS.
- FOR SITE LIGHT IMPROVEMENTS, SEE ELECTRICAL PLANS - SHEETS 34 TO 39.

NOTE

KINDER MORGAN'S CALNEV PIPELINE HAS AN EXISTING 8" HIGH PRESSURE FUEL LINE TRAVERSING THE SITE. CONTRACTOR SHALL HAVE A COPY OF THE "GUIDELINES FOR DESIGN AND CONSTRUCTION NEAR KINDER MORGAN OPERATED FACILITIES". DOCUMENT AND NOTIFY KINDER MORGAN FOR COORDINATION OF REQUIREMENTS PRIOR TO CONSTRUCTION. LINE SHALL BE CLEARLY INDICATED IN THE FIELD AND NO EXCAVATION SHALL OCCUR WITHIN 30 FEET OF THE PIPELINE WITHOUT A KINDER MORGAN INSPECTOR PRESENT.



NOT FOR BID

Underground Service Alert

 Call: TOLL FREE
 1-800-227-2600
 TWO WORKING DAYS BEFORE YOU DIG

BENCHMARK
 NATIONAL GEODETIC SURVEY BENCHMARK
 DESIGNATION: RF 51
 POINT: EV9108
 DATUM: NAVD 88
 ELEVATION: 1964.3 FEET
 DESCRIPTION: 0.5 KM SOUTHWEST ALONG PALM AVENUE FROM ITS JUNCTION WITH INTERSTATE HIGHWAY 215 AND HIGHWAY 205. THENCE 0.9 KM SOUTHWESTERLY ALONG INSTITUTION ROAD 23.5 M (77.1 FT) N OF THE CENTERLINE OF THE ROAD 60 M (197 FT) E OF THE CENTER OF A TRUCK ROAD 1.8 M (6.4 FT) W OF A UTILITY POLE. NUMBER 1891621E 0.3 M (1.0 FT) S OF A WITNESS POST 0.3 M (1.0 FT) ABOVE THE ROAD 0.2 M (0.7 FT) BELOW THE GROUND SURFACE.

PREPARED BY:

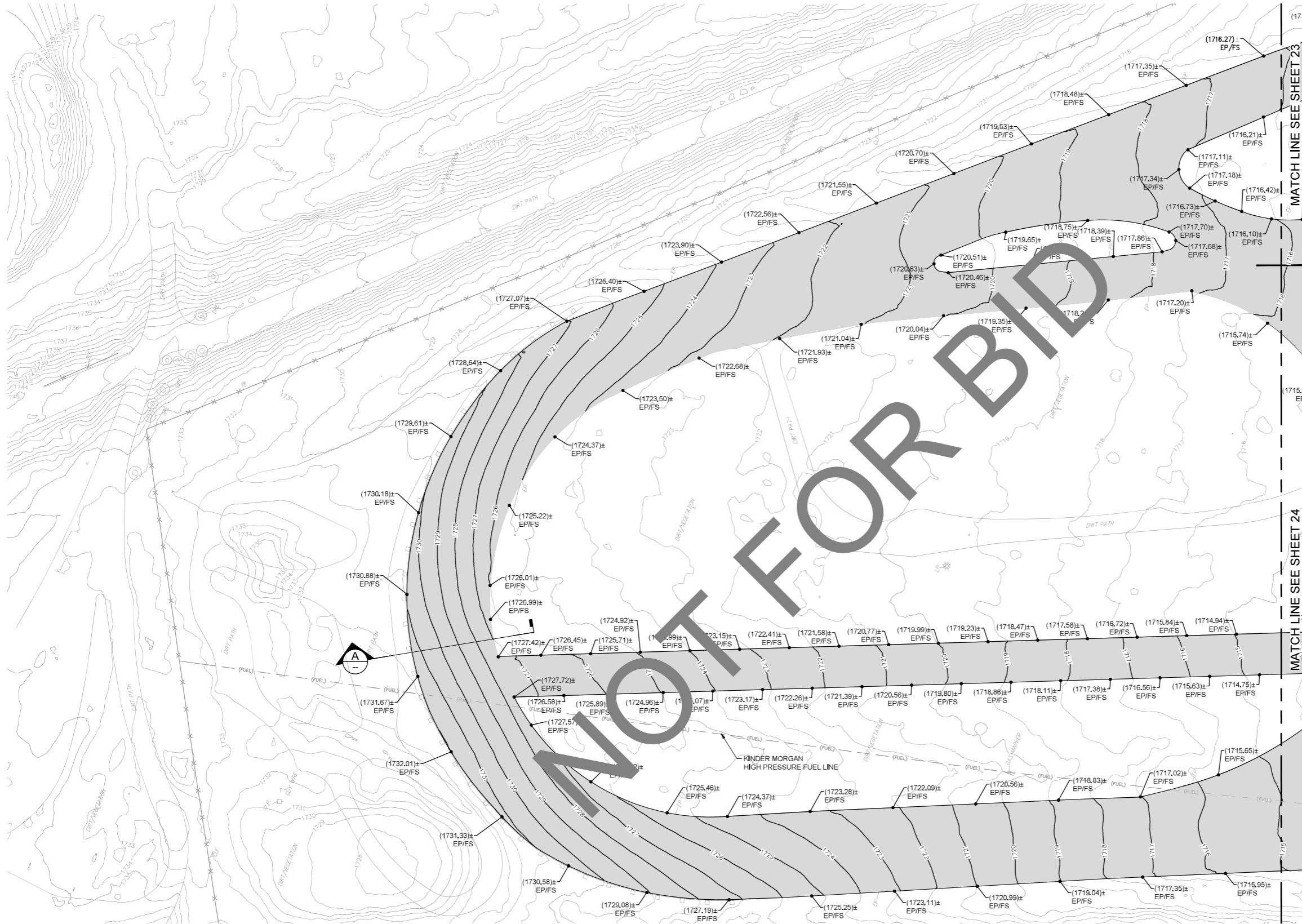
 901 VIA PIEMONTE SUITE 400
 OAKLAND, CA 94764
 PROJECT # 22006394.00
 PH: 909.477.6915
 FAX: 909.477.2916
 www.imeg.com
 JOHN M. THOMPSON
 RCE NAME
 C82557
 RCE NO.
 11/07/23
 DATE

MARK	REVISIONS	APPR	DATE

SAN BERNARDINO COUNTY
PROJECT AND FACILITIES MANAGEMENT DEPARTMENT
 RECOMMENDED BY: _____
 APPROVED BY: _____
 ELSY BANKS
 PROJECT MANAGER III
 DATE: _____

SAN BERNARDINO COUNTY
SHERIFF'S DEPARTMENT
EMERGENCY VEHICLE OPERATIONS CENTER
 ASPHALT & LIGHTING REPLACEMENT
 PROJECT NO. 10.10.1222
PAVING AND SIGNING & STRIPING PLAN

ROAD NO.
FILE NO.
SHEET 21 OF 44



LEGEND

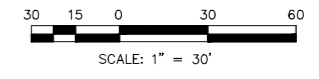
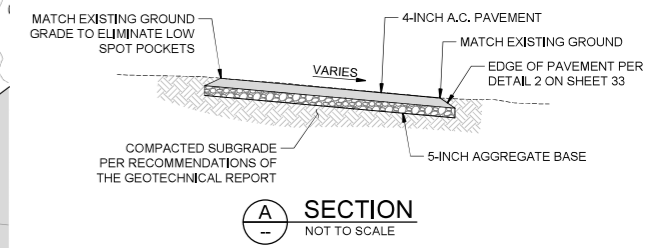
PROPOSED ASPHALT PAVEMENT

SHEET NOTES

- FOR GENERAL NOTES, LEGEND, AND ABBREVIATIONS, SEE SHEET 1.
- FOR CONSTRUCTION DETAILS, SEE SHEETS 32 AND 33.
- FOR PAVING PLANS, SEE SHEETS 12 TO 21.

NOTE

KINDER MORGAN'S CALNEV PIPELINE HAS AN EXISTING 8" HIGH PRESSURE FUEL LINE TRAVERSING THE SITE. CONTRACTOR SHALL HAVE A COPY OF THE "GUIDELINES FOR DESIGN AND CONSTRUCTION NEAR KINDER MORGAN OPERATED FACILITIES". DOCUMENT AND NOTIFY KINDER MORGAN FOR COORDINATION OF REQUIREMENTS PRIOR TO CONSTRUCTION. LINE SHALL BE CLEARLY INDICATED IN THE FIELD AND NO EXCAVATION SHALL OCCUR WITHIN 30 FEET OF THE PIPELINE WITHOUT A KINDER MORGAN INSPECTOR PRESENT.



Underground Service Alert
 Call: TOLL FREE
 1-800-227-2600
 TWO WORKING DAYS BEFORE YOU DIG

BENCHMARK
 NATIONAL GEODETIC SURVEY BENCHMARK
 DESIGNATION: RF 51
 POINT: EV9108
 DATUM: NAVD 83
 ELEVATION: 1664.3 FEET
 DESCRIPTION: 0.6 KM SOUTHWEST ALONG PALM AVENUE FROM ITS JUNCTION WITH INTERSTATE HIGHWAY 215 AND HIGHWAY 206. THENCE 0.9 KM SOUTHWESTERLY ALONG INSTITUTION ROAD 23.5 M (77.1 FT) N OF THE CENTERLINE OF THE ROAD 6.0 M (19.7 FT) E OF THE CENTER OF A TRACK ROAD 1.8 M (5.9 FT) W OF A UTILITY POLE. NUMBER 1891621E (0.3 M (1.0 FT) S OF A WITNESS POST 0.3 M (1.0 FT) ABOVE THE ROAD 0.2 M (0.7 FT) BELOW THE GROUND SURFACE.

PREPARED BY:

 801 VIA PIEMONTE SUITE 400
 OAKLAND, CA 94764
 PROJECT # 22006394.00
 PH: 909.477.8915
 FAX: 909.477.2916
 www.imeg.com
 JOHN M. THOMPSON
 RCE NAME
 C82557
 RCE NO.
 11/07/23
 DATE

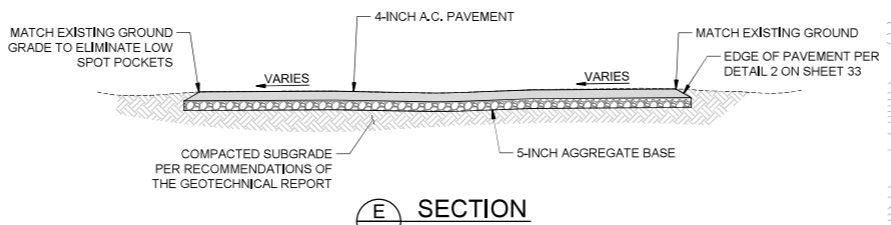
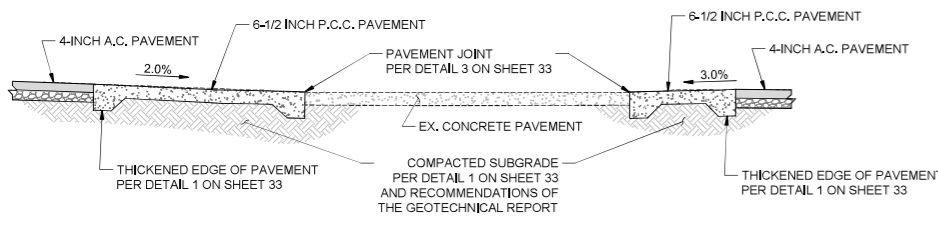
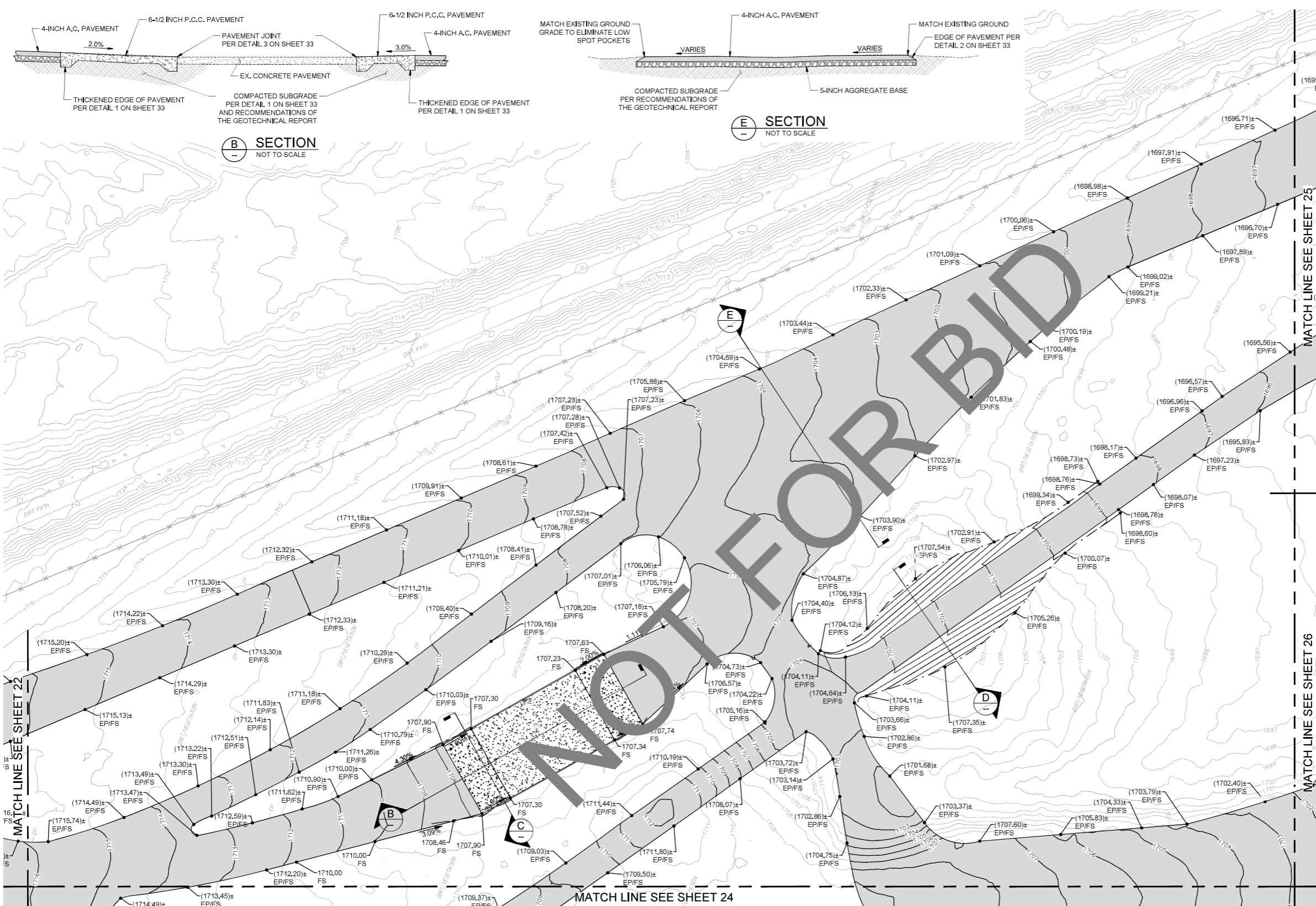


MARK	REVISIONS	APPR	DATE

SAN BERNARDINO COUNTY
PROJECT AND FACILITIES MANAGEMENT DEPARTMENT
 RECOMMENDED BY: _____
 APPROVED BY: _____
 ELSY BANKS
 PROJECT MANAGER III

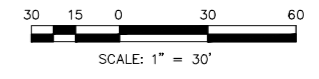
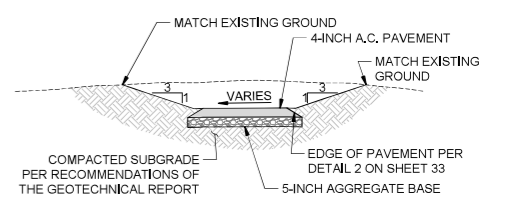
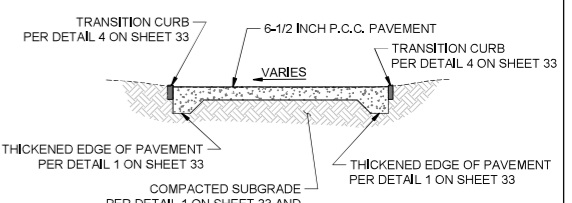
SAN BERNARDINO COUNTY
SHERIFF'S DEPARTMENT
EMERGENCY VEHICLE OPERATIONS CENTER
 ASPHALT & LIGHTING REPLACEMENT
 PROJECT NO. 10.10.1222
GRADING PLAN

ROAD NO.
FILE NO.
SHEET 22 OF 44



- ### LEGEND
- PROPOSED ASPHALT PAVEMENT
 - PROPOSED CONCRETE PAVEMENT
 - EXISTING CONCRETE PAVEMENT TO REMAIN
 - LIMITS OF GRADING / JOIN EXISTING

- ### SHEET NOTES
1. FOR GENERAL NOTES, LEGEND, AND ABBREVIATIONS, SEE SHEET 1.
 2. FOR CONSTRUCTION DETAILS, SEE SHEETS 32 AND 33.
 3. FOR PAVING PLANS, SEE SHEETS 12 TO 21.



Underground Service Alert

 Call: TOLL FREE
1-800-227-2600

BENCHMARK

NATIONAL GEODETIC SURVEY BENCHMARK

DESTINATION: RF 51
 PD: EV9108
 DATUM: NAVD 88
 ELEVATION: 1694.3 FEET

DESCRIPTION: 0.5 KM SOUTHWEST ALONG PALM AVENUE FROM ITS JUNCTION WITH INTERSTATE HIGHWAY 215 AND HIGHWAY 206, THENCE 0.9 KM SOUTHWESTERLY ALONG INSTITUTION ROAD 23.5 M (77.1 FT) N OF THE CENTERLINE OF THE ROAD 62 M (203.7 FT) OF THE CENTER OF A TRUCK ROAD 1.8 M (5.9 FT) W OF A UTILITY POLE NUMBER 1891621E (0.4 M (1.3 FT) S OF A WITNESS POST 0.3 M (1.0 FT) ABOVE THE ROAD 0.2 M (0.7 FT) BELOW THE GROUND SURFACE.

PREPARED BY:

901 VIA PIEMONTE SUITE 400
 CHATWAO, CA 91764
 PROJECT # 22006394.00

PH 909.477.6915
 FAX 909.477.6916
 www.imeg.com

JOHN M. THOMPSON
 RCE NAME

C82557
 RCE NO.

11/07/23
 DATE

MARK	REVISIONS	APPR	DATE

SAN BERNARDINO COUNTY
 PROJECT AND FACILITIES MANAGEMENT DEPARTMENT

RECOMMENDED BY: _____

APPROVED BY: _____

ELBY BANKS
 PROJECT MANAGER III

DATE: _____

SAN BERNARDINO COUNTY
 SHERIFF'S DEPARTMENT

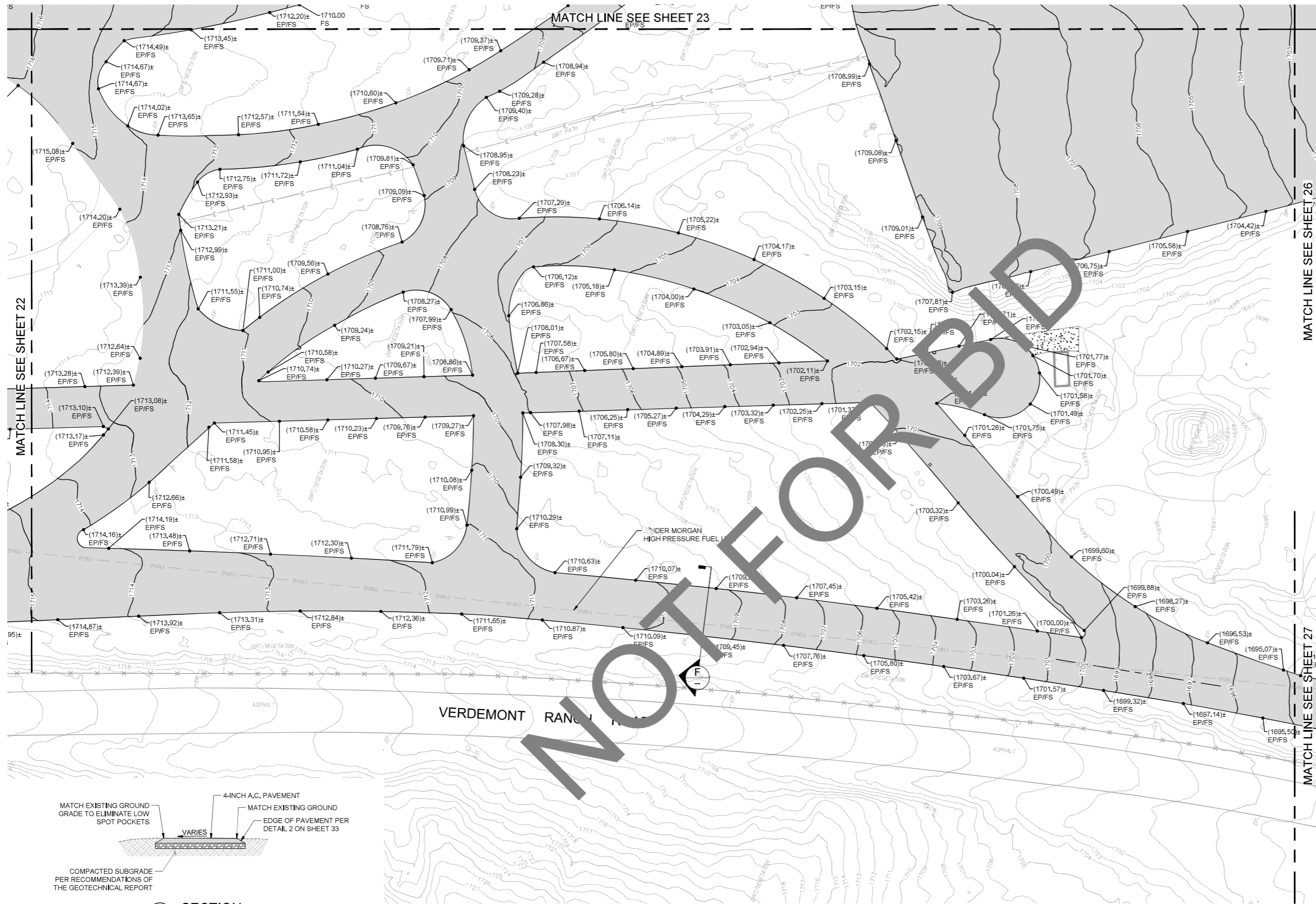
EMERGENCY VEHICLE OPERATIONS CENTER
 ASPHALT & LIGHTING REPLACEMENT
 PROJECT NO. 10.10.1222

GRADING PLAN

ROAD NO. _____

FILE NO. _____

SHEET 23 OF 44



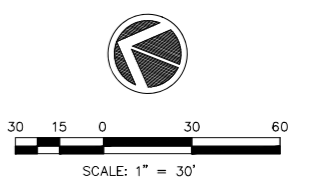
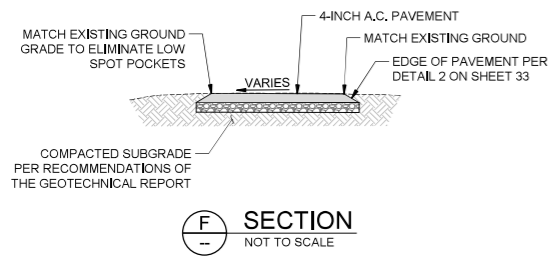
LEGEND

	PROPOSED ASPHALT PAVEMENT
	EXISTING CONCRETE PAVEMENT TO REMAIN

- SHEET NOTES**
- FOR GENERAL NOTES, LEGEND, AND ABBREVIATIONS, SEE SHEET 1.
 - FOR CONSTRUCTION DETAILS, SEE SHEETS 32 AND 33.
 - FOR PAVING PLANS, SEE SHEETS 12 TO 21.

NOTE

KINDER MORGAN'S CALNEV PIPELINE HAS AN EXISTING 8" HIGH PRESSURE FUEL LINE TRAVERSING THE SITE, CONTRACTOR SHALL HAVE A COPY OF THE "GUIDELINES FOR DESIGN AND CONSTRUCTION NEAR KINDER MORGAN OPERATED FACILITIES", DOCUMENT AND NOTIFY KINDER MORGAN FOR COORDINATION OF REQUIREMENTS PRIOR TO CONSTRUCTION. LINE SHALL BE CLEARLY INDICATED IN THE FIELD AND NO EXCAVATION SHALL OCCUR WITHIN 30 FEET OF THE PIPELINE WITHOUT A KINDER MORGAN INSPECTOR PRESENT.



Underground Service Alert

Call: TOLL FREE
1-800-227-2600

TWO WORKING DAYS BEFORE YOU DIG

BENCHMARK

NATIONAL GEODETIC SURVEY BENCHMARK

DESIGNATION: RF 51
 PD: EV9108
 DATUM: NAVD 83
 ELEVATION: 1694.3 FEET

DESCRIPTION: 0.3 KM SOUTHWEST ALONG PALM AVENUE FROM ITS JUNCTION WITH INTERSTATE HIGHWAY 215 AND HIGHWAY 206, THENCE 0.9 KM SOUTHWESTERLY ALONG INSTITUTION ROAD 23.5 M (77.1 FT) N OF THE CENTERLINE OF THE ROAD 62 M (197 FT) E OF THE CENTER OF A TRUCK ROAD 1.8 M (5.9 FT) W OF A UTILITY POLE, NUMBER 1891621E (0.3 M (1.0 FT) S OF A WITNESS POST 0.3 M (1.0 FT) ABOVE THE ROAD 0.2 M (0.7 FT) BELOW THE GROUND SURFACE.

PREPARED BY:

IMEG

801 VIA PIEMONTE
SUITE 400
COSTA MESA, CA 92626
PROJECT # 22006394.00

PH: 909.477.8915
FAX: 909.477.2916
www.imeg.com

JOHN M. THOMPSON
RCE NAME

C82557
RCE NO.

11/07/23
DATE

MARK	REVISIONS	APPR	DATE

SAN BERNARDINO COUNTY
PROJECT AND FACILITIES MANAGEMENT DEPARTMENT

RECOMMENDED BY: _____

APPROVED BY: _____

ELSY BANKS
PROJECT MANAGER III

DATE: _____

SAN BERNARDINO COUNTY
SHERIFF'S DEPARTMENT

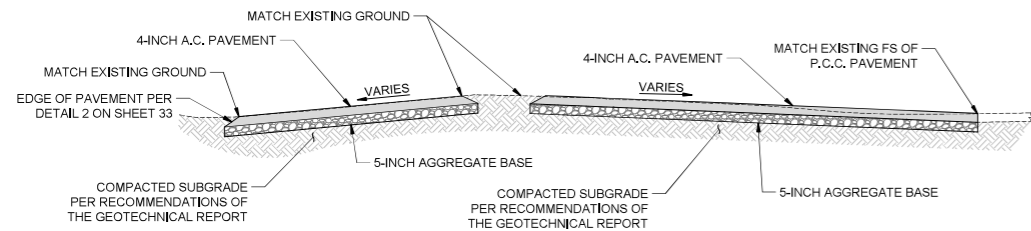
EMERGENCY VEHICLE OPERATIONS CENTER
ASPHALT & LIGHTING REPLACEMENT
PROJECT NO. 10.10.1222

GRADING PLAN

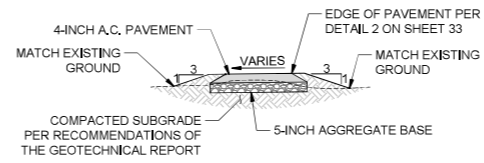
ROAD NO. _____

FILE NO. _____

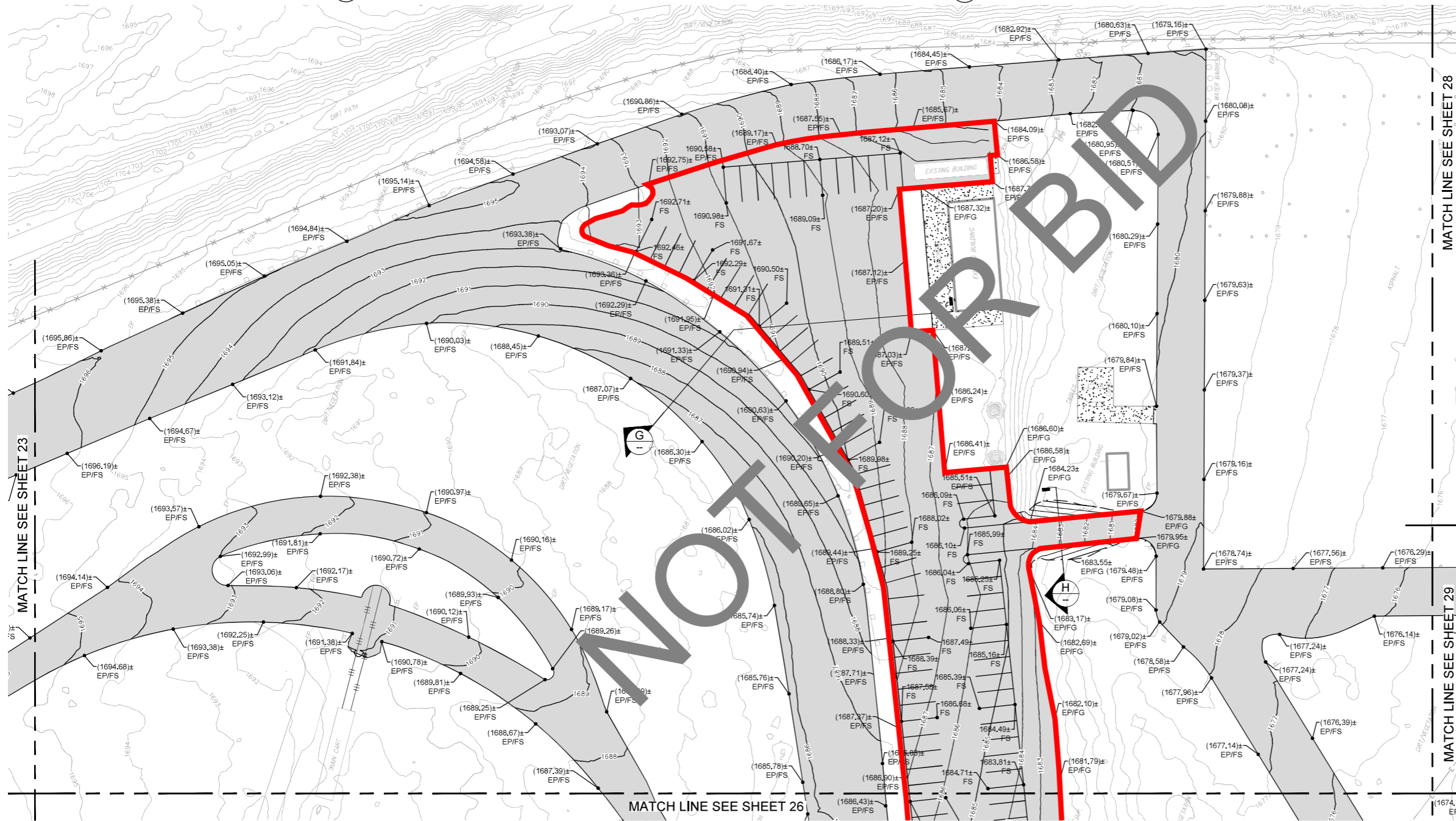
SHEET 24 OF 44



G SECTION
NOT TO SCALE



H SECTION
NOT TO SCALE



LEGEND

- PROPOSED ASPHALT PAVEMENT
- EXISTING CONCRETE PAVEMENT TO REMAIN
- LIMITS OF GRADING / JOIN EXISTING
- ADD-ALTERNATE #1 LIMITS OF WORK

SHEET NOTES

1. FOR GENERAL NOTES, LEGEND, AND ABBREVIATIONS, SEE SHEET 1.
2. FOR CONSTRUCTION DETAILS, SEE SHEETS 32 AND 33.
3. FOR PAVING PLANS, SEE SHEETS 12 TO 21.



SCALE: 1" = 30'

Underground Service Alert



Call: TOLL FREE
1-800-227-2600

BENCHMARK

NATIONAL GEODETIC SURVEY BENCHMARK
 DESIGNATION: RF 51
 POINT: EV9108
 DATE: NAVD 88
 ELEVATION: 1694.3 FEET
 DESCRIPTION: 0.5 KM SOUTHWEST ALONG PALM AVENUE FROM ITS JUNCTION WITH INTERSTATE HIGHWAY 215 AND HIGHWAY 206. THENCE 0.5 KM SOUTHWESTERLY ALONG INSTITUTION ROAD 23.5 M (77.1 FT) N OF THE CENTERLINE OF THE ROAD 62 M (203 FT) E OF THE CENTER OF A TRUCK ROAD 1.8 M (5.9 FT) W OF A UTILITY POLE. NUMBER 1891821E 0.3 M (1.0 FT) S OF A WITNESS POST 0.3 M (1.0 FT) ABOVE THE ROAD 0.2 M (0.7 FT) BELOW THE GROUND SURFACE.

PREPARED BY:



901 VIA PIEMONTE
 SUITE 800
 CHATWORTH, CA 91357
 PROJECT # 22006394.00
 PH 909.477.8915
 FAX 909.477.2916
 www.imeg.com

JOHN M. THOMPSON
 RCE NAME
 C82557
 RCE NO.
 11/07/23
 DATE



MARK	REVISIONS	APPR	DATE

SAN BERNARDINO COUNTY
 PROJECT AND FACILITIES MANAGEMENT DEPARTMENT
 RECOMMENDED BY: _____
 APPROVED BY: _____
 ELSY BANKS
 PROJECT MANAGER III

SAN BERNARDINO COUNTY
 SHERIFF'S DEPARTMENT
 EMERGENCY VEHICLE OPERATIONS CENTER
 ASPHALT & LIGHTING REPLACEMENT
 PROJECT NO. 10.10.1222
 GRADING PLAN

ROAD NO.
 FILE NO.
 SHEET 25 OF 44