



CWE Rate Sheet

<u>Engineer/Scientist</u>	<u>Rate/Hour</u>
Principal	\$334
Senior Project Manager	\$321
Project Manager	\$291
Technical Manager	\$255
Task Leader	\$246
Principal Engineer	\$214
Senior Engineer	\$199
Project Engineer	\$185
Staff Engineer	\$153
Assistant Engineer	\$123
Senior Environmental Scientist	\$198
Environmental Scientist	\$166
Environmental Analyst	\$138
<u>Construction Services</u>	
Construction Manager	\$241
Senior Construction Inspector	\$188
Construction Inspector	\$176
<u>Support Services</u>	
GIS Specialist	\$152
Senior Engineering Technician	\$122
Engineering Technician	\$100
CADD Designer	\$108
Project Coordinator	\$142
Graphic Designer	\$132
Administrative Assistant	\$124
<u>Equipment Prices</u>	
YSI Pro DSS <i>measuring D.O., temperature, pH, turbidity, conductivity, ORP</i>	\$203/day
YSI Pro DSS <i>assumes weekly calibration only</i>	\$504/two-weeks
Turbidity Meter	\$69/day
DO and Temperature Only Meter	\$29/day
Conductivity and Temperature Only Meter	\$29/day
pH Meter	\$29/day
<u>General</u>	
Direct Expenses	Cost + 10%
Subcontract Services	Cost + 10%
Mileage (Only mileage within County will be charged)	Current IRS Rate
B&W Photocopies (per page)	\$0.10
Color Photocopies (per page)	\$0.50

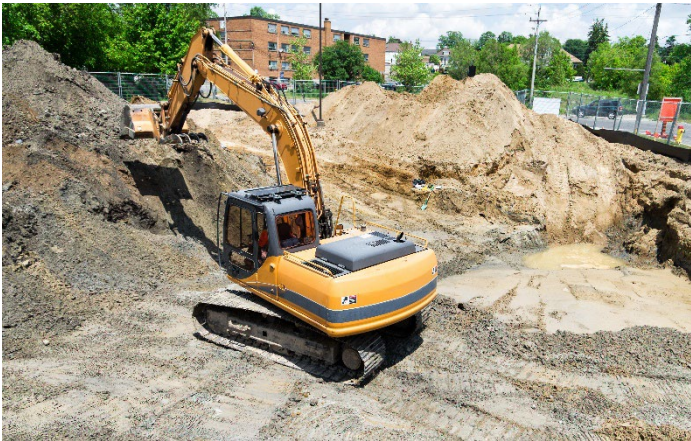
Rates will be adjusted annually based on the US Department of Labor, Bureau of Labor Statistics, Consumer Price Index for Los Angeles area.

Rates for field equipment, health and safety equipment, and graphical supplies presented upon request.

Based on CWE maintaining General Liability Insurance for bodily injury and property damage with an aggregate limit of \$2,000,000 per occurrence. In the event the client desires additional coverage, CWE will, upon the client's written request, obtain additional insurance and adjust the above billing rates accordingly.



ENTHALPY ANALYTICAL



2026 Fee Schedule



WWW.ENTHALPY.COM

Value of Continued Partnership



Our Focus is You

We measure our success by what our client's think about us and our service delivery. We want you to know that even when the stakes are high, with fast paced, complex project requirements, you can count on us. We maintain clear, frequent communication to deliver high-quality results, consistently. This is how we have maintained client satisfaction while strengthening and broadening our impact and reach.

Our People

We will continue to use the right tools and dedicate the right people to fulfill your project requests. Rest assured, our Lab Directors and Project Managers will apply their cumulative knowledge and experience to perform efficient and comprehensive laboratory services. As you know, each of our labs brings its own unique legacy of excellence in their field of expertise. Combined, we are a truly comprehensive analytical vendor solution.

How We Work

Together we emphasize collaboration and problem-solve to provide dependable data that supports sound client- and business-decisions. Whether it's verification and/or assurance, permitting and/or compliance requirements, we are right there to support you. Using science-based solutions, scalable approaches and a commitment to maintaining the highest ethical standards, our lab network will successfully support your important projects.

Data Accuracy and Quality Assurance

Our in-house Laboratory Information Systems (LIMS) centralizes, automates, logs and tracks sample data, test methods, and pricing in real-time. What does this mean for you? It means you'll have a provider who will offer faster, easier and more convenient access to your data. Our robust Quality Assurance Program improves productivity and accuracy in testing and analyses. Whether its ultra-low-level trace analyses or bioaccumulation and toxicology, we have the depth and the analytical field position.

Certifications, Accreditations & Reassurance

Enthalpy's robust network of lab facilities and testing services are compliant with applicable state, federal and local laws, regulations, ordinances, and standards. We also deploy stringent environmental and safety procedures and adopt nationally recognized and accredited testing methods for a variety of analytes. Our accredited status is both a testament to the high-quality technical standards under which we operate, and the reassurance that the data.

Our Services

Enthalpy is a full service analytical provider. For a list of our testing and analytical capabilities, please visit our Services page on our website:

www.Enthalpy.com



ENTHALPY
ANALYTICAL

Laboratory

Enthalpy Analytical, LLC
931 West Barkley
Orange, CA 92868
(714) 771-6900

Service Center

Enthalpy Analytical, LLC
7411 Laurel Canyon Blvd. Suite 8
North Hollywood, CA 91605
(858) 587-7333

Service Center

Enthalpy Analytical, LLC
4630 Northgate Blvd., Suite 150
Sacramento, CA 95834
(916) 537-6094

Service Center

Enthalpy Analytical, LLC
4340 Vandever Avenue
San Diego, CA 92120
(909) 247-8800

Service Center

Enthalpy Analytical, LLC
5900 Hollis St., Suite L
Emeryville, CA 94608
(510) 486-0900

2026 RATE SHEET

Minimum Analytical Fee - \$150 Per Report

TEST DESCRIPTION	METHOD	LIST PRICE
ORGANICS		
1,2,3 Trichloropropane (TCP) (Low Level)	EPA 524 SRL	\$123
1,4-Dioxane	EPA 8270 SIM	\$153
Dissolved Gases (Methane, Ethane, Ethene, Acetylene)	RSK-175	\$125
Organochlorine Pesticides	EPA 8081	\$119
Organochlorine Pesticides & PCBs ^{Note 1}	EPA 608 or 8081/8082	\$201
PCBs (Soil & Water) ^{Note 1}	EPA 8082	\$96
PCBs (Soxhlet Extraction) ^{Note 1}	EPA 8082	\$175
PCB Hazardous Waste Disposal (If Result > 50 ppm) ^{Note 1}	Per Sample	\$50
Polynuclear Aromatic Hydrocarbons	EPA 8270 SIM	\$158
Semi-Volatile Organic Compounds	EPA 8270 / 625	\$198
TPH-GRO	EPA 8015 PPH	\$68
TPH-DRO (and/or ORO)	EPA 8015 EPH	\$86
TPH-DRO/ORO - Low Level (Water only)	EPA 8015 EPH	\$103
TPH-Carbon Chain (C6-C44) (Diesel Standard Only)	EPA 8015 EPH	\$86
Volatile Organic Compounds	EPA 524.2	\$144
Total Trihalomethanes	EPA 524.2	\$83
Volatile Organic Compounds	EPA 8260 / 624	\$114
Volatile Organic Compounds + Oxygenates	EPA 8260	\$124
Volatile Organic Compounds - Acrolein and Acrylonitrile	EPA 624	\$124
Volatile Organic Compounds + TPH-GRO by GCMS	EPA 8260	\$145
BTEX + TPH-GRO by GCMS	EPA 8260	\$109
BTEX & MTBE only	EPA 8260 / 624	\$97
BTEX & Oxygenates only	EPA 8260	\$108
Volatile Organic Compounds: Low Level	EPA 8260 / 624	\$124
Tentatively Identified Compounds (TICs) for GCMS - up to 5	EPA 8260 / 624 / 8270 / 625	\$88
TIER 1 ESLs		
Semi-Volatile Organic Compounds (Low Level)	EPA 8270 / 625	\$218
Organochlorine Pesticides & PCBs (Low Level) ^{Note 1}	EPA 608 or 8081 + 8082	\$203
GPC Cleanup (Per Method Prep) (Required for ESL Reporting)		\$109



ENTHALPY
ANALYTICAL

Laboratory

Enthalpy Analytical, LLC
931 West Barkley
Orange, CA 92868
(714) 771-6900

Service Center

Enthalpy Analytical, LLC
7411 Laurel Canyon Blvd. Suite 8
North Hollywood, CA 91605
(858) 587-7333

Service Center

Enthalpy Analytical, LLC
4630 Northgate Blvd., Suite 150
Sacramento, CA 95834
(916) 537-6094

Service Center

Enthalpy Analytical, LLC
4340 Vandever Avenue
San Diego, CA 92120
(909) 247-8800

Service Center

Enthalpy Analytical, LLC
5900 Hollis St., Suite L
Emeryville, CA 94608
(510) 486-0900

2026 RATE SHEET

Minimum Analytical Fee - \$150 Per Report

TEST DESCRIPTION	METHOD	LIST PRICE
AIR		
Custom VOCs (triple injection)	Method 18 (full method)	\$464
Methane or Methane/Ethane only	Method 18M	\$99
Hydrocarbons (C1-C6+) ppmV (single Inj) variances (TNMOC, TNMNEOC, C3+)	Method 18M or EPA TO-3M	\$152
TVOC as Hexane (ppbV)	EPA TO-3M	\$135
TPH-gasoline (ppbV)	EPA TO-3M	\$135
C2 to C12 speciated Hydrocarbons PAMS	TO-12/PAMS	\$221
TNMOC/TGNMO/TNMHC	EPA 25M	\$148
TNMNEOC	SCAQMD 25.3	\$747
Fixed Gases	EPA 3C or ASTM D1946	\$117
Fixed Gases + Helium	EPA 3C or ASTM D1946	\$141
Helium only	EPA 3C or ASTM D1946	\$93
Hydrogen Sulfide H2S	EPA M16m Jerome Meter	\$122
Hydrogen Sulfide H2S only	ASTM D5504 or SCAQMD 307-91	\$155
TRS (full speciated sulfurs)	ASTM D5504 or SCAQMD 307-91	\$361
BTU (no H2S)	ASTM D3588	\$412
BTU with H2S	ASTM D3588	\$515
Metals in Air	Various Methods	Call for Pricing
VOCs	EPA TO-15/8260B(M)	\$209
VOCs + Oxygenates	EPA TO-15	\$224
TO-15 SIM Standard List (46 comp)	EPA TO-15 SIM	\$252
TO-15 Standard List SIM and SCAN (see list)	EPA TO-15 SIM/SCAN	\$350
Tentatively Identified Compounds (TICs) - Top 5	EPA TO-15	\$75
Diesel Range Organics / NAPH / SVOCs	EPA TO-17	Call for Pricing
AIR EQUIPMENT AND SAMPLING KITS		
1.4L or 6L Canisters (Batch Certified)		\$63
1.4L or 6L Canisters (Individual Certified)		\$126
VaporDeck (Helium Shroud) (inc. He Detectors & Purge Pump)		\$350
Helium Supply (Per Sample)		\$15
3-Way Valve (Per Sample)		\$17
Chameleon (Dual Gauge) SV Sampler (Batch Certified)		\$47
Chameleon (Dual Gauge) SV Sampler (Individual Certified)		\$93
Indoor/Ambient Air Flow Controller (Batch Certified)		\$57
Indoor/Ambient Air Flow Controller (Individual Certified)		\$114
Purge Canister		\$63
1L Tedlar Bags (Per Bag)		\$31
Tubing (Per Foot)		\$16
Nuts/Ferrules		\$13
Transfer From Tedlar to Canister to extend holding time		\$109
Equipment Order Cancellation (24-48hr before shipment)		50% equipment charge
Equipment Order Cancellation (less than 24hr before shipment)		100% equipment charge



ENTHALPY
ANALYTICAL

Laboratory

Enthalpy Analytical, LLC
931 West Barkley
Orange, CA 92868
(714) 771-6900

Service Center

Enthalpy Analytical, LLC
7411 Laurel Canyon Blvd. Suite 8
North Hollywood, CA 91605
(858) 587-7333

Service Center

Enthalpy Analytical, LLC
4630 Northgate Blvd., Suite 150
Sacramento, CA 95834
(916) 537-6094

Service Center

Enthalpy Analytical, LLC
4340 Vandever Avenue
San Diego, CA 92120
(909) 247-8800

Service Center

Enthalpy Analytical, LLC
5900 Hollis St., Suite L
Emeryville, CA 94608
(510) 486-0900

2026 RATE SHEET

Minimum Analytical Fee - \$150 Per Report

TEST DESCRIPTION	METHOD	LIST PRICE
METALS		
CLP Target Analyte List (23)	EPA 6010 / 7470 / 7471	\$168
CLP Target Analyte List (23)	EPA 6020 / 7470 / 7471	\$179
Ferric Iron (Fe+3)	SM3500FE-B	\$117
Ferrous Iron (Fe+2)	SM3500FE-B	\$117
Hexavalent Chromium (water)	EPA 218.6 / 7199 / 7196	\$88
Hexavalent Chromium (soil)	EPA 7199 / 7196	\$106
ICP Metals - CAM 17/Title 22	EPA 6010 / 200.7 / 7470/ 7471	\$148
ICP-MS Metals - CAM 17/Title 22	EPA 6020 / 200.8 / 7470/ 7471	\$158
ICP - Metals Single Element (w/digestion)	EPA 6010 / 200.7	\$27 for 1 analyte + \$18/analyte
ICP-MS - Metals Single Element (w/digestion)	EPA 6020 / 200.8	\$32 for 1 analyte + \$18/analyte
LUFT 5 Metals	EPA 6010	\$86
Mercury	EPA 245.1 / 7470 / 7471	\$46
Mercury - Low Level	EPA 245.1	\$50
Percent Sodium	EPA 200.7 / 6010	\$27
Priority Pollutant 13 Metals	EPA 6010 / 7470 / 7471	\$125
Priority Pollutant 13 Metals	EPA 6020 / 7470 / 7471	\$135
RCRA 8 Metals	EPA 6010 / 7470 / 7471	\$119
RCRA 8 Metals	EPA 6020 / 7470 / 7471	\$129
Trivalent Chromium (Calculation)		\$137



ENTHALPY
ANALYTICAL

Laboratory

Enthalpy Analytical, LLC
931 West Barkley
Orange, CA 92868
(714) 771-6900

Service Center

Enthalpy Analytical, LLC
7411 Laurel Canyon Blvd. Suite 8
North Hollywood, CA 91605
(858) 587-7333

Service Center

Enthalpy Analytical, LLC
4630 Northgate Blvd., Suite 150
Sacramento, CA 95834
(916) 537-6094

Service Center

Enthalpy Analytical, LLC
4340 Vandever Avenue
San Diego, CA 92120
(909) 247-8800

Service Center

Enthalpy Analytical, LLC
5900 Hollis St., Suite L
Emeryville, CA 94608
(510) 486-0900

2026 RATE SHEET

Minimum Analytical Fee - \$150 Per Report

TEST DESCRIPTION	METHOD	LIST PRICE
CHEMISTRY		
Alkalinity, Total	SM 2320-B	\$34
Ammonia (Semi-Automated)	EPA 350.1	\$67
Ammonia (Automated)	SM4500- NH3-G	\$83
Ammonia (Un-Ionized Calculation Only)		\$18
Anions in Water (Bromide, Chloride, Fluoride, Nitrate, Nitrite, Sulfate)	EPA 300.0	\$31 (Each)
Anions in Soil (Bromide, Chloride, Nitrate, Nitrite, Sulfate)	EPA 300.0	\$49 (Each)
BOD or CBOD (5 Day)	SM 5210-B	\$91
BOD or CBOD (7 Day)	SM 5210-B	\$111
Calcium Carbonate Precipitation Potential (Calculation Only)	SM 2330B	\$18
Chemical Oxygen Demand	EPA 410.4 / SM 5220D	\$52
Chemical Oxygen Demand (Filtered)	EPA 410.4 / SM 5220D	\$67
Chlorine, Total Residual	SM 4500-Cl	\$34
Chlorine, Total Residual (Field Test)	SM 4500-Cl	\$20
Color	SM 2120-B	\$29
Cyanide, Amenable (Water)	EPA 335.4 / 9012	\$75
Cyanide, Amenable (Soil)	EPA 9014	\$158
Cyanide, Total (Water)	EPA 335.4	\$62
Cyanide, Total and Amenable (Water only)	EPA 335.4	\$136
Cyanide, Low Level (5 ug/L)	EPA 335.4	\$75
Cyanide, Total (Soil)	EPA 9014	\$116
Carbon Dioxide, Free	SM 4500-CO2-C	\$47
Dissolved Inorganic Carbon	SM 5310B	\$83
Dissolved Organic Carbon	SM 5310B	\$67
Dissolved Oxygen	SM 4500-O-G	\$47
Fixed Dissolved Solids	SM 2540E	\$51
Fluoride (Water)	SM 4500-F-C (ISE) / 9214	\$31
Fluoride (Soil)	EPA 9214	\$62
General Physical (Color/Odor/Turbidity)	Various	\$100
General Minerals w/ Inorganic Chemicals	Various	\$381
Hardness (Calcium, Magnesium)	EPA 200.7 / 6010	\$57
Hardness (Calcium Only)	EPA 200.7 / 6010	\$34
Hardness (Magnesium Only)	EPA 200.7 / 6010	\$34
Hydrogen Sulfide (Water Only)	SM 4500-S-H	\$83
Flash Point - Liquids (Closed Cup)	EPA 1010	\$117
Ignitability - Solids	EPA 1030	\$117
Inorganic Nitrogen (Ammonia/NO ₂ /NO ₃)	Various	\$149



ENTHALPY
ANALYTICAL

Laboratory

Enthalpy Analytical, LLC
931 West Barkley
Orange, CA 92868
(714) 771-6900

Service Center

Enthalpy Analytical, LLC
7411 Laurel Canyon Blvd. Suite 8
North Hollywood, CA 91605
(858) 587-7333

Service Center

Enthalpy Analytical, LLC
4630 Northgate Blvd., Suite 150
Sacramento, CA 95834
(916) 537-6094

Service Center

Enthalpy Analytical, LLC
4340 Vandever Avenue
San Diego, CA 92120
(909) 247-8800

Service Center

Enthalpy Analytical, LLC
5900 Hollis St., Suite L
Emeryville, CA 94608
(510) 486-0900

2026 RATE SHEET

Minimum Analytical Fee - \$150 Per Report

TEST DESCRIPTION	METHOD	LIST PRICE
CHEMISTRY (cont.)		
Ion Balance (Calculation Only)	Calculation	\$18
Langelier Index	Various	\$34
MBAS	SM 5540C	\$78
Moisture Content	ASTM D2216-98	\$25
Nitrate+Nitrite-N	EPA 353.2	\$83
Nitrate+Nitrite-N	SM 4500-NO3-F	\$83
Nitrate-N or Nitrite-N	EPA 353.2	\$54
Odor	SM 2150-B	\$29
Oil & Grease (Total)	EPA 1664-HEM	\$64
Oil & Grease (Total+Non-Polar)	EPA 1664-HEM-SGT	\$116
Organic Nitrogen (Ammonia/TKN)	Various	\$147
Ortho-Phosphate	SM4500-P-E	\$78
Paint Filter Test	EPA 9095A	\$67
Perchlorate (water)	EPA 314.0	\$80
Perchlorate (soil)	EPA 314.0	\$101
pH	EPA 150.1/9040/5/SM 4500 H+B	\$25
pH (Field Test)	SM 4500 H+B	\$20
Phenols, Total	EPA 420.1	\$57
Phosphate, Total (as PO ₄)	SM 4500-P-B-E	\$95
Phosphorus, Total (as P)	SM 4500-P-B-E	\$95
Salinity	SM 2520-B	\$34
Settleable Solids	SM2540-F	\$34
Silica	SM 4500-SIO2-D	\$91
Sodium Absorption Ratio	Calculation	\$88
Specific Conductance	SM 2510-B	\$29
Sulfide, Dissolved	SM 4500-S2-D	\$66
Sulfide, Dissolved - Field Flocculation	SM 4500-S2-D	\$57
Sulfide, Total (Water Only)	SM 4500-SD	\$57
Total Dissolved Solids	SM 2540-C	\$34
Total Fixed and Volatile Solids (Solid Only)	SM 2540-B-E	\$78
Total Kjeldahl Nitrogen	EPA 351.2	\$64
Total Nitrogen (NO ₂ /NO ₃ /TKN)	Various	\$142
Total Organic Carbon (Water Only)	EPA 9060 / SM 5310B	\$86



ENTHALPY
ANALYTICAL

Laboratory
Enthalpy Analytical, LLC
931 West Barkley
Orange, CA 92868
(714) 771-6900

Service Center
Enthalpy Analytical, LLC
7411 Laurel Canyon Blvd. Suite 8
North Hollywood, CA 91605
(858) 587-7333

Service Center
Enthalpy Analytical, LLC
4340 Vandever Avenue
San Diego, CA 92120
(909) 247-8800

Service Center
Enthalpy Analytical, LLC
4630 Northgate Blvd., Suite 150
Sacramento, CA 95834
(916) 537-6094

Service Center
Enthalpy Analytical, LLC
5900 Hollis St., Suite L
Emeryville, CA 94608
(510) 486-0900

2026 RATE SHEET

Minimum Analytical Fee - \$150 Per Report

TEST DESCRIPTION	METHOD	LIST PRICE
CHEMISTRY (cont.)		
Total Solids	SM 2540-B	\$34
Total Suspended Solids	SM 2540-D	\$34
Turbidity	EPA 180.1	\$29
Volatile Suspended Solids	SM 2540E	\$34
Volatile and Non-Volatile Solids	EPA 160.4	\$74
PFAS/ULTRA TRACE		
PFAS in Drinking Water	EPA 533/537.1	Call for pricing
PFAS	EPA 1633	Call for pricing
PFAS in Non-Potable Water/Soil/Solid/Tissue	EPA 537M-Isotope Dilution	Call for pricing
TOP Assay (Oxidation Step)		Call for pricing
Adsorbable Organic Fluorine (AOF)	Draft 1621	Call for pricing
2,3,7,8 TCDD Dioxin Only (non-Drinking Water)	EPA 1613 / 8290	Call for pricing
Dioxins and Furans in non-potable water/solids/tissues (17 Isomers inc. TEQ)	EPA 1613 / 8290	Call for pricing
PCB/PBDE Congeners		Call for pricing
MICROBIOLOGY (Water only)		
Coliform, Total (MPN) - 10 tubes	SM 9221B	\$62
Coliform, Total (MPN) - 15 tubes	SM 9221B	\$83
Coliform, Total (MPN) - 25 tubes	SM 9221B	\$114
Coliform, Total (MPN) - additional dilutions	SM 9221B	\$34/dilution
Coliform, Fecal (MPN) - 10 tubes	SM 9221E	\$62
Coliform, Fecal (MPN) - 15 tubes	SM 9221E	\$83
Coliform, Fecal (MPN) - 25 tubes	SM 9221E	\$114
Coliform, Fecal (MPN) - additional dilutions	SM 9221E	\$34/dilution
E. Coli (MPN) - 10 tubes	SM 9221F	\$62
E. Coli (MPN) - 15 tubes	SM 9221F	\$83
E. Coli (MPN) - additional dilutions	SM 9221F	\$34/dilution
Coliform, Total/Fecal/E. Coli(MPN) - 10 tubes	SM 9221	\$186
Coliform, Total/Fecal/E. Coli(MPN) - 15 tubes	SM 9221	\$248
Coliform, Total/Fecal/E. Coli(MPN) - Additional dilutions	SM 9221	\$34/dilution
Coliform/E. Coli (MPN)	SM 9223(Quantitray)	\$62
Coliform/E. Coli (Presence/Absence)	SM 9223	\$52
Standard Plate Count/HPC – Aerobic	SM 9215/IDEXX SIMPLATE	\$52
Standard Plate Count/HPC – Anaerobic	SM 9215/IDEXX SIMPLATE	\$52
Enterococcus/Enterolert	SM 9230B/D	\$86
Enterococcus	SM 9230	\$148
Soil Prep Fee for Microbiology		\$57



ENTHALPY
ANALYTICAL

Laboratory
Enthalpy Analytical, LLC
931 West Barkley
Orange, CA 92868
(714) 771-6900

Service Center
Enthalpy Analytical, LLC
7411 Laurel Canyon Blvd. Suite 8
North Hollywood, CA 91605
(858) 587-7333

Service Center
Enthalpy Analytical, LLC
4340 Vandever Avenue
San Diego, CA 92120
(909) 247-8800

Service Center
Enthalpy Analytical, LLC
4630 Northgate Blvd., Suite 150
Sacramento, CA 95834
(916) 537-6094

Service Center
Enthalpy Analytical, LLC
5900 Hollis St., Suite L
Emeryville, CA 94608
(510) 486-0900

2026 RATE SHEET

Minimum Analytical Fee - \$150 Per Report

TEST DESCRIPTION	METHOD	LIST PRICE
PREPARATION FEE		
Laboratory Filtering Fee		\$21
Extract and Hold fee		50% of test, min \$50
IC Prep Code		\$23
Sample Compositing Fee (per Discrete Container, Up to 5 Containers)		\$17
Sample Crushing Fee (Per Sample) - Samples must be smaller than 5 cm. Samples larger than 5 cm may be rejected.		\$155
Incremental Sampling - Semi-volatile	ISM (15 business day TAT)	\$206
Incremental Sampling - Metals	ISM (15 business day TAT)	\$206
Incremental Sampling - Volatile (as received)	ISM (15 business day TAT)	\$206
Silica Gel Cleanup		\$58 per cartridge
GPC Cleanup		\$109
STLC/TCLP/SPLP (Sample Extraction Only)	1311 / 1312	\$80
ZHE For STLC/TCLP/SPLP - Minimum (3) samples	1311 / 1312	\$101
SUPPLIES AND SAMPLING KITS		
Deionized Water (Per Liter)		\$22
EPA 5035 Kits (3 Vial)		\$26
EPA 5035 Kits (5 Vial)		\$31
PFAS Free Blank Water (Per Liter)		\$26
Storm Water Kit		\$75
Wipe or Swab Set		\$22
COURIER SERVICE		
Minimum Courier Fee (Actual cost varies based on distance)		\$54
Los Angeles County (within 30 miles of the lab)		\$155
San Fernando Valley		\$212
Orange County		\$129
Riverside		\$150
Inland Empire		\$170
San Diego County		\$222
High Desert / Low Desert		\$222
San Francisco Bay Area		\$222



ENTHALPY
ANALYTICAL

Laboratory

Enthalpy Analytical, LLC
931 West Barkley
Orange, CA 92868
(714) 771-6900

Service Center

Enthalpy Analytical, LLC
7411 Laurel Canyon Blvd. Suite 8
North Hollywood, CA 91605
(858) 587-7333

Service Center

Enthalpy Analytical, LLC
4340 Vandever Avenue
San Diego, CA 92120
(909) 247-8800

Service Center

Enthalpy Analytical, LLC
4630 Northgate Blvd., Suite 150
Sacramento, CA 95834
(916) 537-6094

Service Center

Enthalpy Analytical, LLC
5900 Hollis St., Suite L
Emeryville, CA 94608
(510) 486-0900

2026 RATE SHEET

Minimum Analytical Fee - \$150 Per Report

TEST DESCRIPTION	METHOD	LIST PRICE
FIELD SAMPLING (Minimum Charge per Event)	ISCO-24HR Composite	Micro ** /Grab Sampling
Los Angeles County	\$375	\$360
San Fernando Valley	\$435	\$385
Orange County	\$295	\$270
Orange County (Coastal)	\$320	\$300
Riverside	\$350	\$325
Inland Empire	\$375	\$360
San Diego County	\$465	\$410
High Desert / Low Desert	\$465	\$410
San Francisco Bay Area	Call for pricing	Call for pricing
ISCO Rental (24 hr. Rental)	\$155	\$155
Additional sampling sites within 5 miles of the initial set up		\$115
On-site wait time after the first 15 minutes	\$65/15-min interval	\$65/15-min interval
Sampling Charge after Hour	100% Surcharge (\$400 minimum) (Weekend or 7PM to 10PM)	
LABORATORY SERVICES (AFTER HOUR)		
Analysis Set Up - Weekend (9AM-5PM)		\$440/Hr. (\$880 minimum)
Analysis Set Up - Holiday		\$880/Hr. (\$1760 minimum)
Analysis Set Up - Holiday Weekend		\$1500/Hr. (\$3000 minimum)
MISCELLANEOUS		
Data Package (Level 3)		15%
Data Package (Level 4)		20%
EDF/CEDEN/CLIP/CUSTOM EDD (Per Lab Report, Per Customer's Request)		\$50
Field Services Cancellation (Same Day)		100%
Air Equipment Order Re-Stocking Fee		\$100 minimum
Hard Copy Reports (Per Customer's Request)		\$100
Data Reprocess Fee (Per Customer's Request)		\$100
Calculation Fee		\$50/analyte
RUSH SURCHARGES (ADVANCED NOTICE)		
Five Business Day TAT (Cut off time 3PM)		25%
Four Business Day TAT (Cut off time 2PM)		35%
Three Business Day TAT (Cut off time 1PM)		50%
Two Business Day TAT (Cut off time 12PM)		75%
One Business Day TAT (Cut off time 11AM)		100%
Same Day TAT (Cut off time 10AM)		200%
SAMPLE STORAGE AND DISPOSAL		
Sample Storage per 30 Day Period (After standard policy)		\$15 per Sample
Unused Container(s) Disposal Fee		\$300 Minimum
Waste Disposal Fee		\$8 per Sample
Foreign Soil Disposal Fee		\$22 per Sample



ENTHALPY
ANALYTICAL

Laboratory
Enthalpy Analytical, LLC
931 West Barkley
Orange, CA 92868
(714) 771-6900

Service Center
Enthalpy Analytical, LLC
7411 Laurel Canyon Blvd. Suite 8
North Hollywood, CA 91605
(858) 587-7333

Service Center
Enthalpy Analytical, LLC
4340 Vandever Avenue
San Diego, CA 92120
(909) 247-8800

Service Center
Enthalpy Analytical, LLC
4630 Northgate Blvd., Suite 150
Sacramento, CA 95834
(916) 537-6094

Service Center
Enthalpy Analytical, LLC
5900 Hollis St., Suite L
Emeryville, CA 94608
(510) 486-0900

2026 RATE SHEET

Minimum Analytical Fee - \$150 Per Report

TEST DESCRIPTION	METHOD	LIST PRICE
Air Project Notes		
Request for equipment requires a minimum of 5 business days in advance. Rental of equipment is based on a 2 week period. Additional charges may apply if equipment is needed longer than that.		
Sample canisters will be cleaned 5 calendar days after associated data has been reported. Additional charges may apply if an extended waiting period is requested.		
Hazardous Waste Project Notes		
TCLP/STLC same day surcharge applied to all prep and analytical rush requests that are 3 days or less.		
Addition of STLC or TCLP add-on will reset the turnaround time to 5-7 business days.		
Minimum analytical charge may be added for each change order including STLC or TCLP analysis additions.		
Storm Water Project Notes		
Bottle kits must be requested in advance, at least one week notice must be given prior to your sampling event.		
Bottle kits requested with less than a week notice will be subject to a rush surcharge.		
Bottle kits will be invoiced upfront when the request is made.		
ADDITIONAL INFORMATION		
Standard TAT is 7-10 business days for most in-house analyses.		
Payment must be in the form of credit card or check prior to sampling event and/or before terms are established.		
All credit card payments will incur a 3% service fee.		
Unless otherwise agreed in writing, these services are provided pursuant to the terms and conditions as set forth at https://enthalpy.com/terms-and-conditions/ .		
Note 1 - Clients have the option of picking up/disposing of samples that are detected >50PPM to avoid extra disposal fee.		
Additional fees may be assessed for sea water or other complicated matrices.		
Subcontracting – The TAT starts when the subcontract lab receives the samples. Enthalpy will manage the subcontract work with the client's approval but will not assume any liability for any performances issues that the sub lab might encounter during the course of the project.		
Requests for sampling supplies (bottle kits) with less than 5 business day advanced notice may be subject to the following charges: - 1-20 samples = \$75 - 21-50 samples = \$100 - 51-100 samples = \$150		
Minimum analytical log-in fee is set at \$150 per COC submitted.		



ENTHALPY
ANALYTICAL

Laboratory

Enthalpy Analytical, LLC
931 West Barkley
Orange, CA 92868
(714) 771-6900

Service Center

Enthalpy Analytical, LLC
7411 Laurel Canyon Blvd. Suite 8
North Hollywood, CA 91605
(858) 587-7333

Service Center

Enthalpy Analytical, LLC
4630 Northgate Blvd., Suite 150
Sacramento, CA 95834
(916) 537-6094

Service Center

Enthalpy Analytical, LLC
4340 Vandever Avenue
San Diego, CA 92120
(909) 247-8800

Service Center

Enthalpy Analytical, LLC
5900 Hollis St., Suite L
Emeryville, CA 94608
(510) 486-0900

2026 RATE SHEET

Minimum Analytical Fee - \$150 Per Report

TEST DESCRIPTION	METHOD	LIST PRICE
<p>Rush turnaround time surcharges are added on top of the minimum analytical fee when the minimum analytical fee is applicable, with the exception of microbiology projects. Rush surcharges for microbiology projects that fall under the minimum analytical fee are based on the minimum fee itself.</p>		
<p>The turn around times (TATs) are good-faith, best efforts estimates, and may change based on the nature of sample and environmental matrices.</p>		
<p>Sample submittals received with more than 5 samples, and all of the samples placed on Hold may incur the minimum charge.</p>		
<p>Samples must be received by the laboratory with at least half of the method holding time left in order to ensure that the analysis can be performed within the method holding time.</p>		
<p>Duplicates, MS/MSD's on client specified samples will be charged as a separate analytical run.</p>		
<p>If a sample causes GC/MS interferences due to the presence of any unknown organics above "trace" levels, laboratory may add additional TAT (unpenalized) to accommodate additional sample extraction procedures, or apply surcharge for such additional extraction procedures (per sample).</p>		
<p>QA/QC Sample Volume: Provided that enough sample volume is given, the above pricing includes analysis of all laboratory QA/QC samples, on a minimum frequency of one per batch for the purpose of monitoring testing accuracy and precision. QA/QC sample volumes include the appropriate process blanks, laboratory duplicates, matrix spikes/matrix spike duplicates, laboratory control materials, certified reference materials and/or surrogate spikes.</p>		
<p>Enthalpy may charge restocking fee for unused sample containers since they cannot be reused due to potential contamination.</p>		