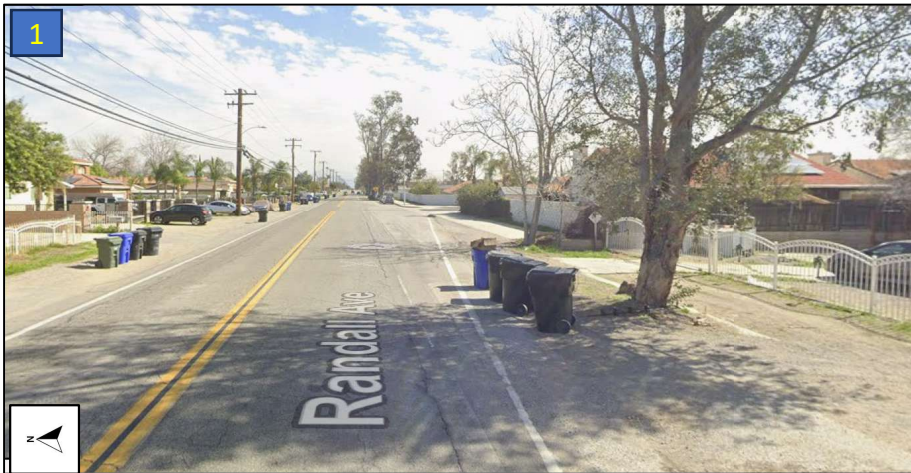
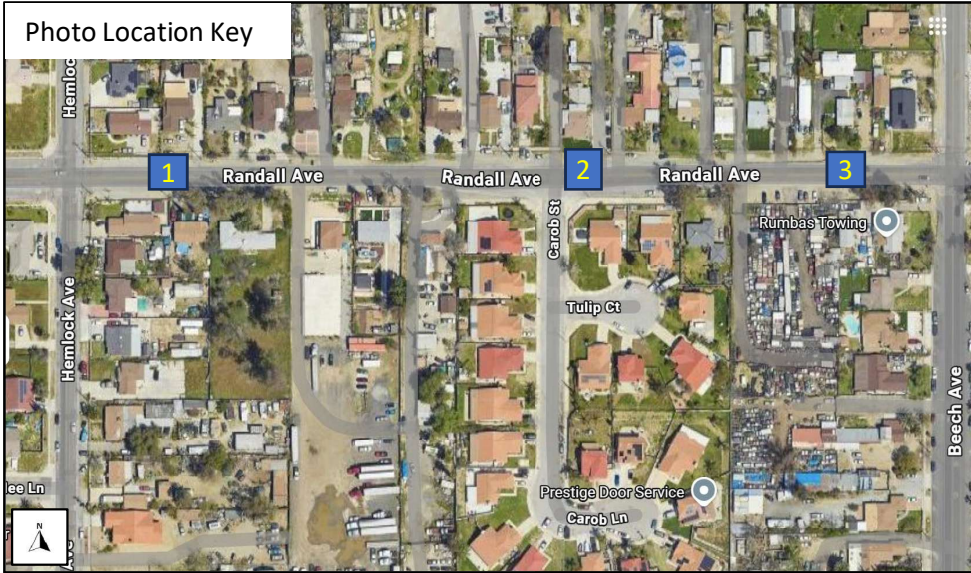




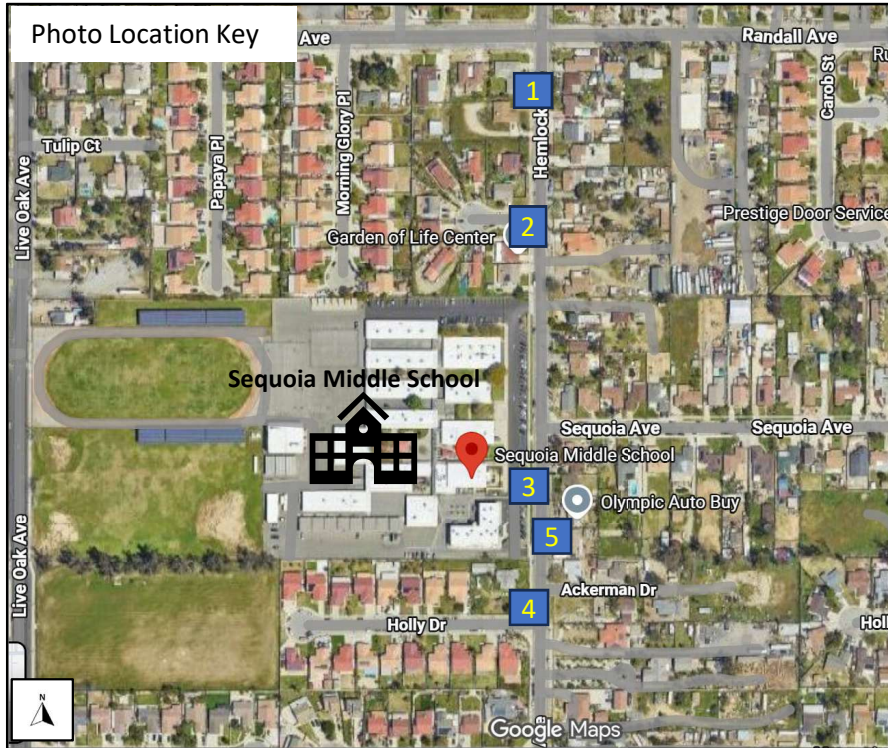
Caltrans ATP Cycle 8
San Bernardino County – Sequoia Middle School – Safe Routes to School
Sidewalks – Randall Avenue between Hemlock Avenue and Beech Avenue
Existing Conditions – Site Photos



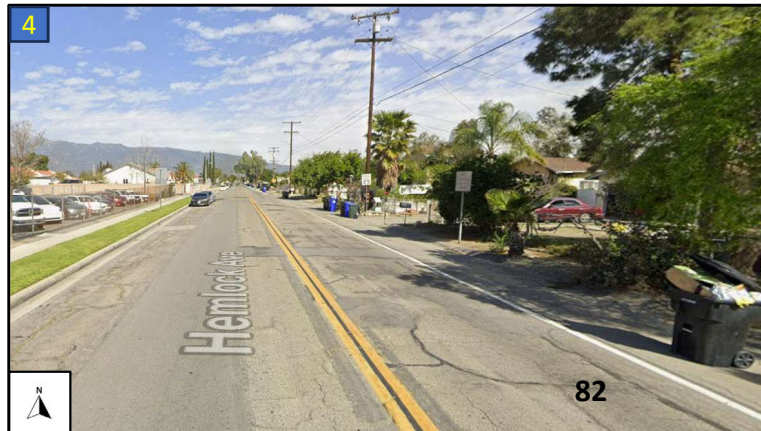
Randall Drive between Hemlock Avenue and Beech Avenue lacks sidewalks on both sides of the roadway, forcing students to walk along the street on a key route or be driven to Sequoia Middle School.



Caltrans ATP Cycle 8
San Bernardino County – Sequoia Middle School – Safe Routes to School
Sidewalks – Hemlock Avenue between Randall Avenue and Holly Drive
Existing Conditions – Site Photos

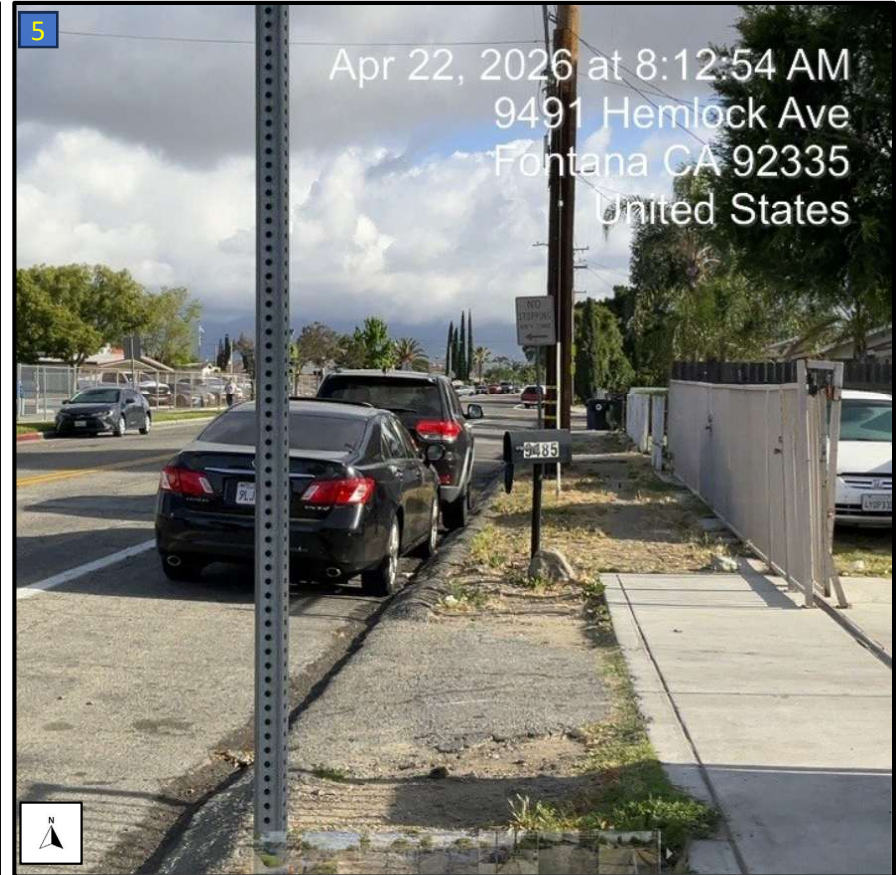
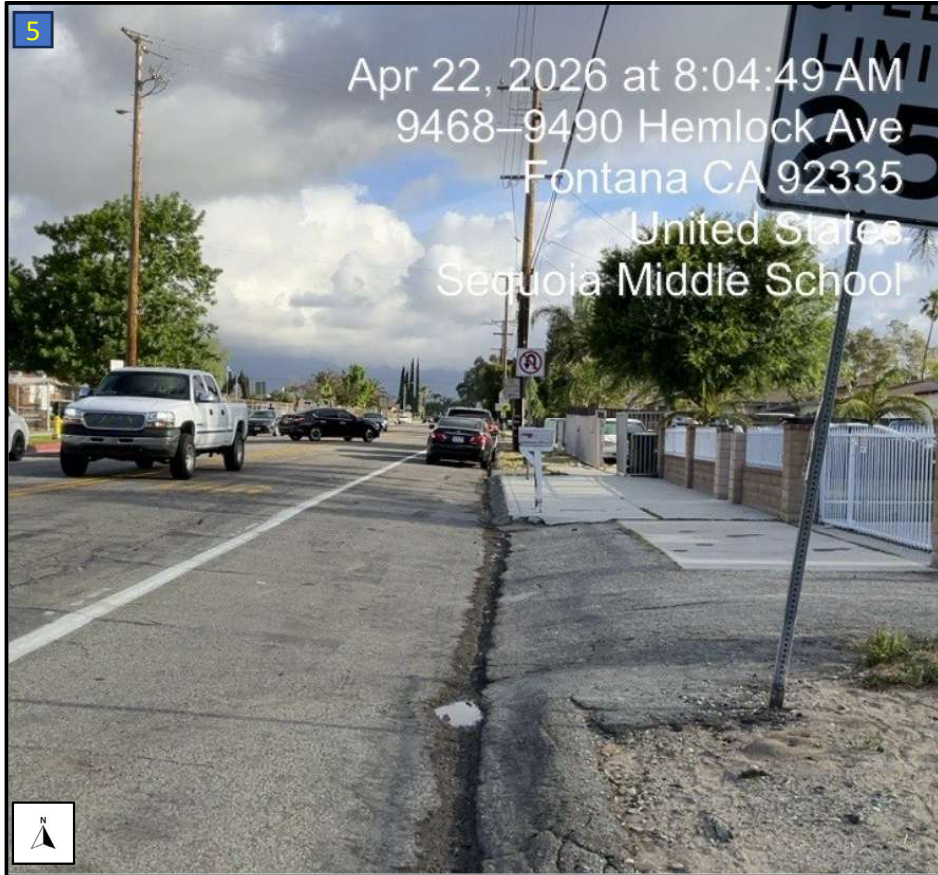


The absence of sidewalks on the eastern side of Hemlock Avenue presents a barrier to safe, uninterrupted walking access to Sequoia Middle School. Street parking reduces safe pedestrian space along the school frontage. (See next page for location 5.)





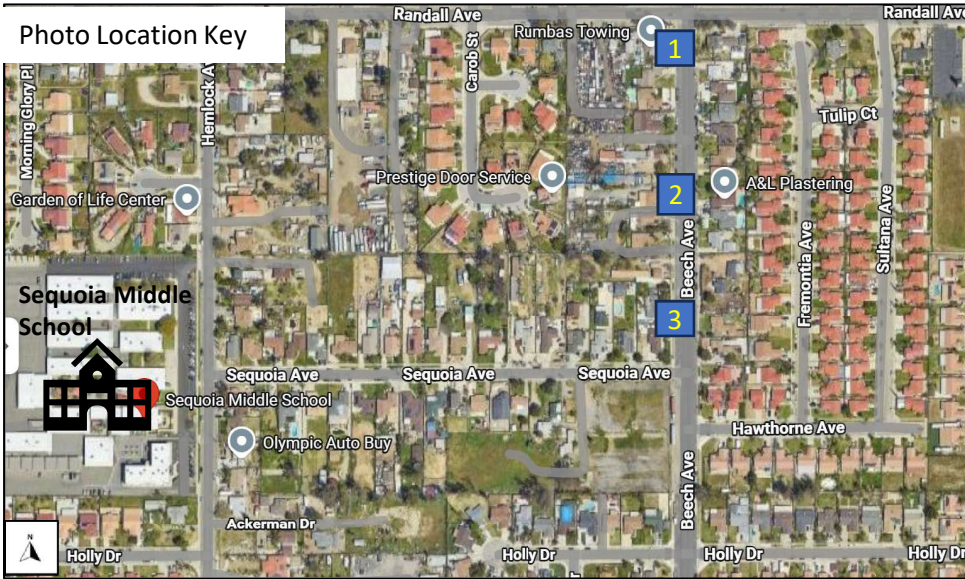
Caltrans ATP Cycle 8
San Bernardino County – Sequoia Middle School – Safe Routes to School
Sidewalks – Hemlock Avenue between Randall Avenue and Holly Drive
Existing Conditions – Site Photos



The photos show the absence of sidewalks on the eastern side of Hemlock Avenue across from the southeast corner of school property limiting walking to school.

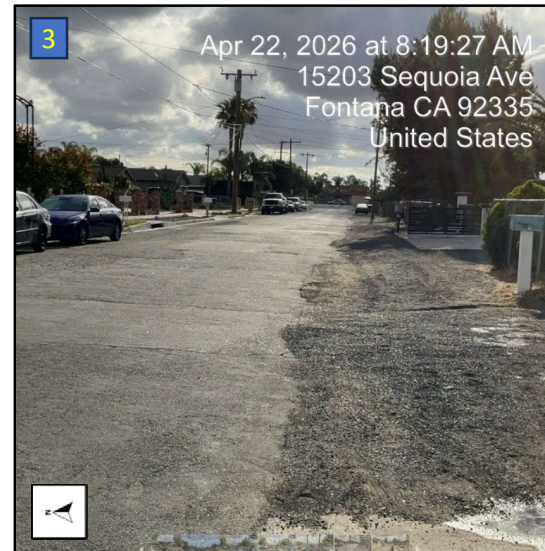


Caltrans ATP Cycle 8
San Bernardino County – Sequoia Middle School – Safe Routes to School
Sidewalks – Beech Avenue between Randall Avenue and Sequoia Avenue
Existing Conditions – Site Photos



Missing sidewalks along Beech Avenue interrupt an otherwise short walk to school, requiring students to share space with vehicle traffic. Large trucks also travel this road, further increasing safety risks for students walking to and from school.

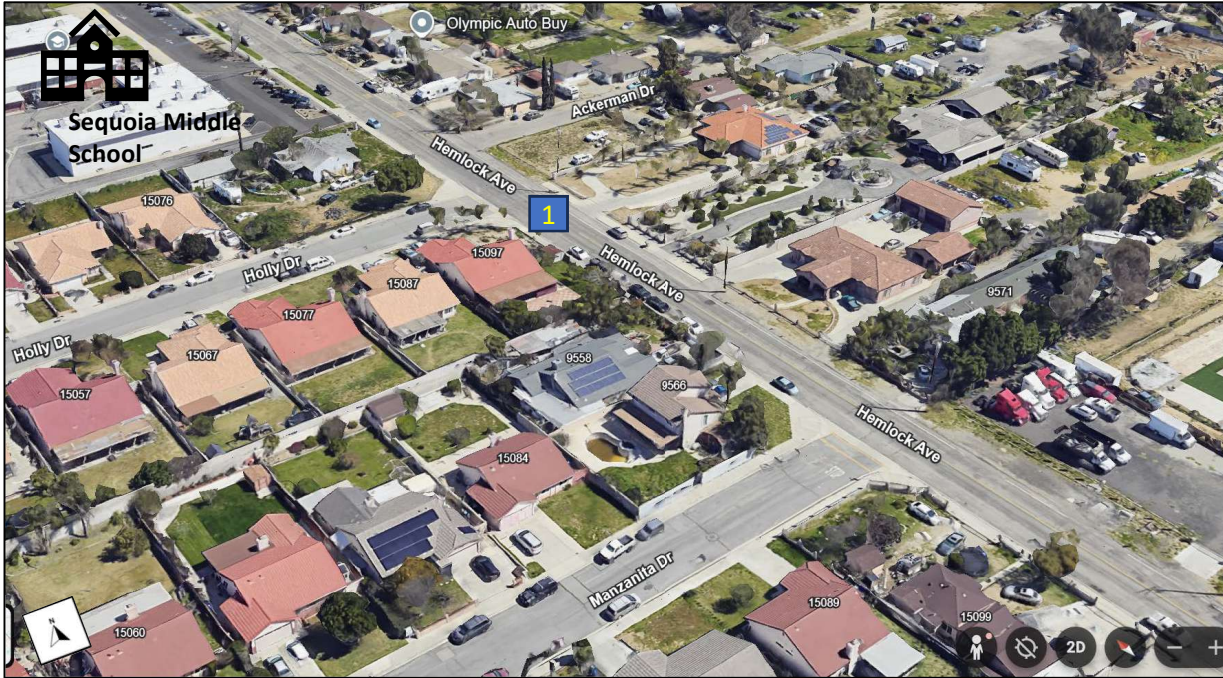
Caltrans ATP Cycle 8
 San Bernardino County – Sequoia Middle School – Safe Routes to School
 Sidewalks – Sequoia Avenue between Carob Street and Beech Avenue
 Existing Conditions – Site Photos



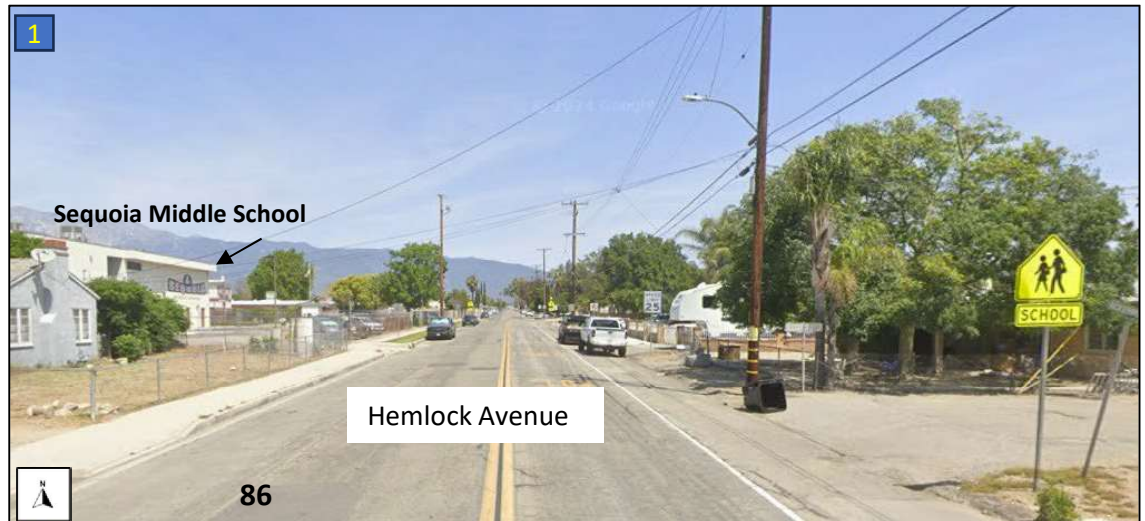
Sidewalk gaps along Sequoia Avenue disrupt an otherwise short route to school, forcing students to walk in the roadway alongside vehicle traffic.



Caltrans ATP Cycle 8
San Bernardino County – Sequoia Middle School – Safe Routes to School
Sidewalks – Hemlock Avenue between Holly Drive and Manzanita Drive
Existing Conditions – Site Photos



On this straight, level segment of Hemlock Avenue approaching the school, higher vehicle speeds raise safety concerns for students walking to or from school.



ATTACHMENT F
Project Estimate



Detailed Project Estimate and Total Project Costs - Cycle 8

Important: Read the Instructions in the first sheet (tab) before entering data. Do not enter data in shaded fields (with formulas).

Project Information:

| | |
|--|------------------------|
| Agency: San Bernardino County, Department of Public Works | Date: 4/27/2026 |
| Project Description: Sequoia Middle School Safe Routes to School | |
| Project Location: Sequoia Middle School, 9452 Hemlock Avenue, Fontana, CA92335 | |
| Licensed Engineer in responsible charge of preparing or reviewing this PSR-Equivalent Cost Estimate: Jeremy Johnson | |
| License #: C91246 | |

Project Estimate and Cost Breakdown:

| Project Estimate (for Construction Items Only) | | | | | | Cost Breakdown | | | | | |
|---|--------------------------------------|----------|-------|---------------|--------------------|-----------------------------------|------------------|---|----|---------------------------|----|
| | | | | | | ATP Eligible/ ATP Funded Costs | | ATP Ineligible and/or Non-ATP Funded Costs | | Corps/CCC to Construct | |
| Item No. | Item | Quantity | Units | Unit Cost | Total Item Cost | % | \$ | % | \$ | % | \$ |
| General <u>Overhead-Related</u> Construction Items | | | | | | | | | | | |
| 1 | Mobilization | 1 | LS | \$56,000.00 | \$56,000 | 100% | \$56,000 | | | | |
| 2 | Traffic Control | 1 | LS | \$56,000.00 | \$56,000 | 100% | \$56,000 | | | | |
| 3 | Stormwater Protection Plan | 1 | LS | \$23,000.00 | \$23,000 | 100% | \$23,000 | | | | |
| 4 | Finishing Roadway | 1 | LS | \$17,000.00 | \$17,000 | 100% | \$17,000 | | | | |
| 5 | Develop Water Supply | 1 | LS | \$23,000.00 | \$23,000 | 100% | \$23,000 | | | | |
| 6 | Supplemental Work (Unforeseen, Site) | 1 | LS | \$23,000.00 | \$23,000 | 100% | \$23,000 | | | | |
| 7 | | | | | | | | 100% | | | |
| 8 | | | | | | | | 100% | | | |
| 9 | | | | | | | | 100% | | | |
| 10 | | | | | | | | 100% | | | |
| General Construction Items | | | | | | | | | | | |
| 11 | High-Visibility Crosswalk | 17 | Each | \$3,450.00 | \$58,650 | 100% | \$58,650 | | | | |
| 12 | ADA-Compliant Curb Ramps | 19 | Each | \$11,500.00 | \$218,500 | 100% | \$218,500 | | | | |
| 13 | Widen Sidewalk (Repave Existing) | 590 | Feet | \$23.00 | \$13,570 | 100% | \$13,570 | | | | |
| 14 | Install Sidewalks | 4705 | Feet | \$75.90 | \$357,110 | 100% | \$357,110 | | | | |
| 15 | Speed Feedback Sign | 1 | Each | \$13,225.00 | \$13,225 | 100% | \$13,225 | | | | |
| 16 | No Left Turn Sign | 1 | Each | \$661.25 | \$661 | 100% | \$661 | | | | |
| 17 | | | | | | | | 100% | | | |
| 18 | | | | | | | | 100% | | | |
| 19 | | | | | | | | 100% | | | |
| 20 | | | | | | | | 100% | | | |
| 21 | | | | | | | | 100% | | | |
| 22 | | | | | | | | 100% | | | |
| 23 | | | | | | | | 100% | | | |
| 24 | | | | | | | | 100% | | | |
| 25 | | | | | | | | 100% | | | |
| 26 | | | | | | | | 100% | | | |
| 27 | | | | | | | | 100% | | | |
| 28 | | | | | | | | 100% | | | |
| 29 | | | | | | | | 100% | | | |
| 30 | | | | | | | | 100% | | | |
| 31 | | | | | | | | 100% | | | |
| 32 | | | | | | | | 100% | | | |
| 33 | | | | | | | | 100% | | | |
| 34 | | | | | | | | 100% | | | |
| 35 | | | | | | | | 100% | | | |
| 36 | | | | | | | | 100% | | | |
| 37 | | | | | | | | 100% | | | |
| 38 | | | | | | | | 100% | | | |
| 39 | | | | | | | | 100% | | | |
| 40 | | | | | | | | 100% | | | |
| 41 | | | | | | | | 100% | | | |
| 42 | | | | | | | | 100% | | | |
| 43 | | | | | | | | 100% | | | |
| 44 | | | | | | | | 100% | | | |
| 45 | | | | | | | | 100% | | | |
| 46 | | | | | | | | 100% | | | |
| 47 | | | | | | | | 100% | | | |
| 48 | | | | | | | | 100% | | | |
| 49 | | | | | | | | 100% | | | |
| 50 | | | | | | | | 100% | | | |
| 51 | | | | | | | | 100% | | | |
| 52 | | | | | | | | 100% | | | |
| Subtotal of Construction Items: | | | | | \$859,716 | | \$859,716 | | | | |
| Construction Item Contingencies (% of Construction Items): | | | | 15.00% | \$128,957 | | \$128,957 | | | | |
| Total (Construction Items & Contingencies) cost: | | | | | \$988,673 | | \$988,673 | | | | |

Detailed Project Estimate and Total Project Costs - Cycle 8

Important: Read the Instructions in the first sheet (tab) before entering data. Do not enter data in shaded fields (with formulas).

Project Information:

| | |
|--|------------------------|
| Agency: San Bernardino County, Department of Public Works | Date: 4/27/2026 |
| Project Description: Sequoia Middle School Safe Routes to School | |
| Project Location: Sequoia Middle School, 9452 Hemlock Avenue, Fontana, CA92335 | |
| Licensed Engineer in responsible charge of preparing or reviewing this PSR-Equivalent Cost Estimate: Jeremy Johnson | |
| License #: C91246 | |

Project Delivery Costs:

| Type of Project Cost | Cost \$ | ATP Eligible and ATP Funded Costs | ATP Ineligible and/or Non-ATP Funded Costs | |
|--|--------------------|---|---|--------------------------|
| Preliminary Engineering (PE) | | | | |
| Project Approval and Environmental Document (PA&ED): | \$ 33,127 | \$33,127 | | |
| Plans, Specifications and Estimates (PS&E): | \$ 126,000 | \$126,000 | | "PE" costs / "CON" costs |
| Total PE: | \$ 159,127 | \$159,127 | | 16% 25% Max |
| Right of Way (RW) | | | | |
| Right of Way Engineering: | \$ 16,000 | \$16,000 | | |
| Acquisitions and Utilities: | \$ 894,200 | \$894,200 | | |
| Total RW: | \$ 910,200 | \$910,200 | | |
| Total Pre-Construction Costs (PE+RW): | \$1,069,327 | \$1,069,327 | | |
| Construction Engineering (CE) | | | | |
| Construction Engineering (CE): | \$ 103,000 | \$103,000 | | "CE" costs / "CON" costs |
| Total Construction Costs (Construction Items & Contingencies + CE): | \$1,091,673 | \$1,091,673 | | 10% 15% Max |
| Total Project Cost: | | | | |
| | \$2,161,000 | \$2,161,000 | | |

Documentation of Eligible and/or Ineligible Costs:

| | |
|----------------|--|
| The Engineer's | |
| Separate | |
| Item #: | Description of Engineer's Justification: (See example shown in the Instructions) |
| | |
| | |
| | |

ATTACHMENT I
Letters of Support





Letters of Support

Sequoia Middle School

Fontana Unified School District

City of Fontana

California Assembly Member Garcia

California Senator Gomez Reyes

California Department of Public Health



Sequoia Middle School

9452 Hemlock Ave • P. O. Box 5040 • Fontana • California 92335-5090 • (909) 357-5400 • Fax (909) 357-7584

May 18, 2026

Tanisha Taylor
Executive Director
California Transportation Commission
1120 N Street, MS 52
Sacramento, CA 95814

RE: Support Letter ATP Cycle 8 Application – Sequoia Middle School Safe Routes to School Infrastructure Project

Dear Ms. Taylor,

As the Principal of Sequoia Middle School, I am proud to offer my strong support for the proposed Safe Routes to School Project serving our students and families. Sequoia Middle School, within the Fontana Unified School District, serves a diverse and resilient student population, the majority of whom come from low-income households. Over 93% of our students are eligible for free or reduced-price meals, and many are English learners or come from households where a language other than English is spoken at home. For many families, walking is not just a choice, it is a necessity due to limited access to reliable transportation. These factors underscore the urgent need for safe, reliable, and accessible routes to school.

Each day, many of our students walk to school under conditions that are less than ideal, including absence of sidewalks, limited safe crossing opportunities, and concerns about vehicle speeds near campus. These challenges not only create safety risks but also discourage healthy, active ways of getting to school.

The proposed project directly addresses these concerns through meaningful improvements. The construction of high-visibility crosswalks and ADA-compliant curb ramps will significantly improve pedestrian safety and accessibility for all students, including those with mobility challenges. The addition of a traffic signal, a “No Left Turn” sign, and a speed feedback sign will help calm traffic and reduce dangerous conflicts near our school.

Equally important, the Project includes widening of existing sidewalks and installing new sidewalk, closing critical gaps in the pedestrian network. These improvements will provide our students with continuous, safe routes to campus, giving families greater confidence in allowing their children to walk to school.

From a school perspective, safer routes will not only reduce the risk of injuries but also support student health, improve attendance, and foster greater independence and confidence among our students. It will also help reduce congestion during drop-off and pick-up times, creating a safer environment for everyone.

I respectfully urge you to fund this impactful project. It will have a lasting, positive impact on the safety, health, and success of our students and families, particularly those who are most vulnerable and underserved.

Thank you for your consideration and commitment to safer communities.

Sincerely,

Brittney Davis-Fox
Principal, Sequoia Middle School

BOARD OF EDUCATION

Angel Ramirez, President
Marcelino “Mars” Serna, Vice President
Danielle Holley, Member
Adam P. Perez, Member
Mary B. Sandoval, Member



Sequoia Middle School Administration

Brittney Davis-Fox, Principal
Anthony Fernandez, Assistant Principal
Matthew Callebs, Dean of Student Support
Jessica Gonzales, School Counselor
Suzanna Macias, School Counselor

Superintendent

Miki R. Inbody



April 14, 2026

Tanisha Taylor
Executive Director
California Transportation Commission
1120 N Street, MS 52
Sacramento, CA 95814

RE: Support for ATP Cycle 8 Application – Sequoia Middle School Safe Routes to School Infrastructure Project

Dear Ms. Taylor:

On behalf of the Fontana Unified School District (FUSD), I am pleased to express our strong support for the County of San Bernardino’s application to the Caltrans Active Transportation Program for funding for the Safe Routes to School Project serving Sequoia Middle School in unincorporated San Bernardino County.

FUSD serves more than 36,000 students across elementary, middle, and high schools, and is committed to ensuring that students have safe, equitable, and accessible ways to travel to and from school. Sequoia Middle School is a vital educational facility within our community, and many of its students rely on walking as their primary mode of transportation. Enhancing pedestrian infrastructure around the campus is critical to improving student safety and encouraging healthy, active transportation.

The proposed Safe Routes to School Infrastructure Project will provide essential safety improvements, including the installation of new and widened sidewalks, high-visibility crosswalks, and ADA-compliant curb ramps. Additional traffic safety measures, such as a no-left-turn sign, speed feedback sign, and a traffic signal, will help calm traffic, improve driver awareness, and reduce conflicts between vehicles and pedestrians. Together, these improvements will create a safer, more accessible environment for students, families, and school staff traveling to and from Sequoia Middle School.

Safe and connected walking routes not only reduce the risk of traffic-related injuries but also promote physical activity and overall student well-being. Research consistently shows that regular physical activity can improve concentration, behavior, and academic performance. By encouraging more students to walk to school, the project will also help reduce vehicle congestion during peak drop-off and pick-up times, improving circulation and safety in the school area and the surrounding neighborhood.

BOARD OF EDUCATION

Angel Ramirez
Marcelino “Mars” Serna
Danielle Holley
Adam P. Perez
Mary B. Sandoval


SUPERINTENDENT

Miki R. Inbody

FUSD strongly supports investments that prioritize student safety, accessibility, and equitable transportation options. The Safe Routes to School Infrastructure Project for Sequoia Middle School aligns directly with these goals and will deliver lasting benefits to our students and the broader community.

We appreciate your consideration of this important project and fully support the County of San Bernardino's efforts to secure Caltrans Active Transportation Program funding.

Respectfully,



Miki R. Inbody
Superintendent of Schools
Fontana Unified School District

MRI:cc



April 27, 2026

Tanisha Taylor
Executive Director
California Transportation Commission
1120 N Street, MS 52
Sacramento, CA 95814

RE: Support for Sequoia Middle School Safe Routes to School ATP Application

Dear Ms. Taylor:

On behalf of the City of Fontana, I am pleased to provide this letter of strong support for the County of San Bernardino's application to the Active Transportation Program for the Safe Routes to School Infrastructure Project serving Sequoia Middle School within the Fontana Unified School District.

The City of Fontana recognizes the critical importance of investing in infrastructure improvements that enhance safety and accessibility for students and families. The proposed project will provide meaningful upgrades in the area surrounding the school, including improved sidewalks, safer pedestrian crossings, ADA-compliant curb ramps, and additional traffic safety enhancements designed to create a more secure environment for students traveling to and from campus.

These improvements directly support local and state goals focused on pedestrian safety, mobility, and active transportation. By strengthening the transportation infrastructure around Sequoia Middle School, the project will help improve traffic flow during school arrival and dismissal periods while reducing potential conflicts between vehicles, pedestrians, and bicyclists. Most importantly, it will provide students with safer and more dependable routes to school.

The City values its continued partnership with the County of San Bernardino and fully supports the request for Active Transportation Program funding for this important initiative. We believe this project will deliver long-term benefits to the community by improving connectivity, promoting safer travel options, and enhancing the overall quality of life for local residents.

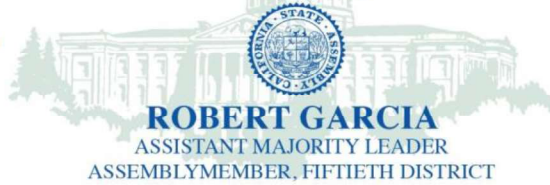
Sincerely,

ACQUANETTA WARREN
Mayor of the City of Fontana

STATE CAPITOL
P.O. BOX 942849
SACRAMENTO, CA 94249-0050
(916) 319-2050
FAX (916) 319-2150

DISTRICT OFFICE
10390 COMMERCE CENTER DRIVE, SUITE C280
RANCHO CUCAMONGA, CA 91730
(909) 966-5090

Assembly
California Legislature



ROBERT GARCIA
ASSISTANT MAJORITY LEADER
ASSEMBLYMEMBER, FIFTIETH DISTRICT

COMMITTEES
COMMUNICATIONS AND
CONVEYANCE
EDUCATION
NATURAL RESOURCES
PUBLIC EMPLOYMENT AND
RETIREMENT
REVENUE AND TAXATION

May 5, 2026

Tanisha Taylor
Executive Director
California Transportation Commission
1120 N Street, MS 52
Sacramento, CA 95814

RE: Support Letter ATP Cycle 8 Applications – San Bernardino County Safe Routes to School Projects

Dear Ms. Taylor:

I write in support of the County of San Bernardino's application to the Caltrans Active Transportation Program for Safe Routes to School infrastructure projects serving two schools within my district, Sequoia Middle School and Bloomington High School.

Middle and high school students face overlapping transportation safety risks as they gain independence. Middle schoolers are still developing traffic awareness, while high schoolers travel farther at higher speeds and face greater access barriers, increasing injury risk for those walking or biking. Providing safe, clearly defined, and accessible walking and bicycling infrastructure reduces traffic conflicts, improves perceptions of safety, and encourages active transportation during a critical developmental period when long-term physical activity habits are formed.

The proposed improvements including improved sidewalks, high-visibility crossings, ADA-compliant curb ramps, and targeted traffic controls will advance ATP goals by improving safety, increasing active transportation, and protecting vulnerable road users. These Safe Routes to School projects are strategic, evidence-based investments that will improve safety for Sequoia Middle School and Bloomington High School students while also supporting broader state objectives related to equity, public health, and sustainable transportation.

I support this application and urge the allocation of Active Transportation Program funding for these critical school safety projects. If you have any questions regarding our support, please contact our office at (909) 966-5090.

Sincerely,

A handwritten signature in black ink, appearing to read "Robert Garcia", is written over a light blue horizontal line.

Assemblymember Robert Garcia
50th Assembly District

CAPITOL OFFICE
1021 O STREET
SUITE 7210
SACRAMENTO, CA 95814
TEL (916) 651-4029

DISTRICT OFFICE
301 E VANDERBILT WAY
SUITE 400
SAN BERNARDINO CA 92408
TEL (909) 888-5360

California State Senate

SENATOR
ELOISE GÓMEZ REYES
TWENTY-NINTH SENATE DISTRICT



COMMITTEES:
EDUCATION
ENVIRONMENTAL QUALITY
HOUSING
JUDICIARY
LEGISLATIVE ETHICS
RULES

May 29, 2026

Tanisha Taylor
Executive Director
California Transportation Commission
1120 N Street, MS
Sacramento, CA 95814

Subject: Letter of Support for ATP Cycle 8 Applications – San Bernardino County Safe Routes to School Projects

Dear Ms. Taylor:

I write in support of the County of San Bernardino's application to the Caltrans Active Transportation Program for Safe Routes to School infrastructure projects serving two schools within my district, Sequoia Middle School and Bloomington High School.

Middle and high school students face distinct yet overlapping transportation safety challenges as they begin traveling more independently. Middle school students are still developing traffic awareness and judgment, while high school students encounter higher speeds, longer travel distances, and greater accessibility barriers that increase injury risk for those who walk or bike to school. Providing safe, clearly defined, and accessible walking and bicycling infrastructure reduces exposure to traffic conflicts, improves perceptions of safety among students and families, and encourages active transportation during a critical developmental period when long-term physical activity habits are formed.

Through my legislative work on issues related to infrastructure, climate innovation, and goods movement, I have seen firsthand the importance of designing transportation systems that prioritize safety for pedestrians and bicyclists, particularly near schools. The proposed improvements, including upgraded sidewalks, high-visibility crossings, ADA-compliant curb ramps, and targeted traffic control measures, directly advance ATP's goals of improving safety, increasing active transportation and protecting vulnerable road users.

These Safe Routes to School projects represent strategic, evidence-based investments that will deliver tangible safety benefits for Sequoia Middle School and Bloomington High School students while supporting broader State objectives related to equity, public health, and sustainable transportation. I respectfully encourage support for the County of San Bernardino's Active Transportation Program application and respectfully request favorable consideration for funding. If you have any questions, please contact me directly at (909) 888-5360.

Sincerely,

A handwritten signature in black ink, appearing to read 'Eloise Gomez Reyes', with a stylized, cursive script.

ELOISE GÓMEZ REYES
Senator, Senate District 29

EGR:mt

Public Health Administration

Joshua Dugas, MBA, REHS
Director

Jennifer Osorio, REHS
Assistant Director

Janki Patel, MPH
Assistant Director

Sharon Wang, DO, MSHPE, FIDSA
Health Officer

May 1, 2026

Tanisha Taylor
Executive Director
California Transportation Commission
1120 N Street, MS 52
Sacramento, CA 95814

RE: Support for Safe Routes to School Active Transportation Program Applications –
San Bernardino County

Dear Ms. Taylor:

The San Bernardino County Department of Public Health is pleased to provide its strong support for San Bernardino County's Active Transportation Program (ATP) applications focused on Safe Routes to School (SRTS) improvements. These include infrastructure projects serving Redlands East Valley High School, Bloomington High School, Dickson Elementary School, Pacific High School, and Sequoia Middle School, as well as a Planning Grant for the High Desert region encompassing nineteen school-area locations.

San Bernardino County faces significant public health challenges related to physical inactivity, preventable chronic disease, and traffic-related injuries, particularly in unincorporated and underserved communities. 36.5 percent of adults in the County are obese, significantly higher than the California average, and nearly 1 in 5 children (19.8%) are overweight for their age. These conditions are closely linked to built-environment barriers such as incomplete sidewalks, high vehicle speeds, and a lack of safe crossings. Traffic safety data further underscore this need, with 14,615 people injured or killed in collisions in 2024 alone, and increasing risks for pedestrians and bicyclists.

The proposed SRTS infrastructure projects address these challenges by improving sidewalks, bicycle facilities, crossings, and traffic calming measures near schools. These improvements are essential to creating safer, reliable routes for students and will help reduce conflicts between vehicles and active transportation users. Studies of SRTS programs have documented reductions in child pedestrian injury rates near schools of approximately 20%-50%.

These projects are particularly important for disadvantaged, rural, and unincorporated communities that have experienced longstanding gaps in pedestrian and bicycle infrastructure. The High Desert Planning Grant will further support this effort by establishing a coordinated, data-

driven framework that integrates community input and stakeholder engagement to identify priority improvements and address local safety concerns.

The Department of Public Health fully supports San Bernardino County's SRTS ATP applications and respectfully urges Caltrans to fund these critical projects. The proposed improvements will deliver measurable safety benefits while advancing long-term public health outcomes for children and families throughout the County.

Please feel free to contact our office at 909.387.6469 if you need additional information.

Sincerely,

A handwritten signature in black ink that reads "Janki Patel". The signature is written in a cursive, flowing style.

Janki Patel
Assistant Director

San Bernardino County reserves the right to revoke support for the aforementioned item at any time.