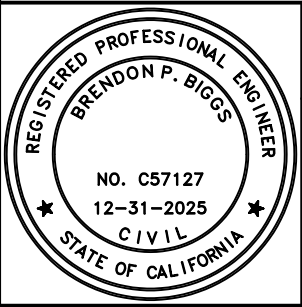


NOTES:

1. SEE STANDARD 303A FOR MARKER LOCATIONS.
2. POST SHALL BE 2" SQUARE STEEL AS SHOWN AND STATED.
3. ANCHOR SLEEVE SHALL BE 2.5" SQUARE STEEL HOT DIPPED GALVANIZED AFTER FABRICATION (ASTM SPECIFICATION A-123).
4. SIGNS SHALL BE INSTALLED IN ACCORDANCE WITH STANDARD 303.



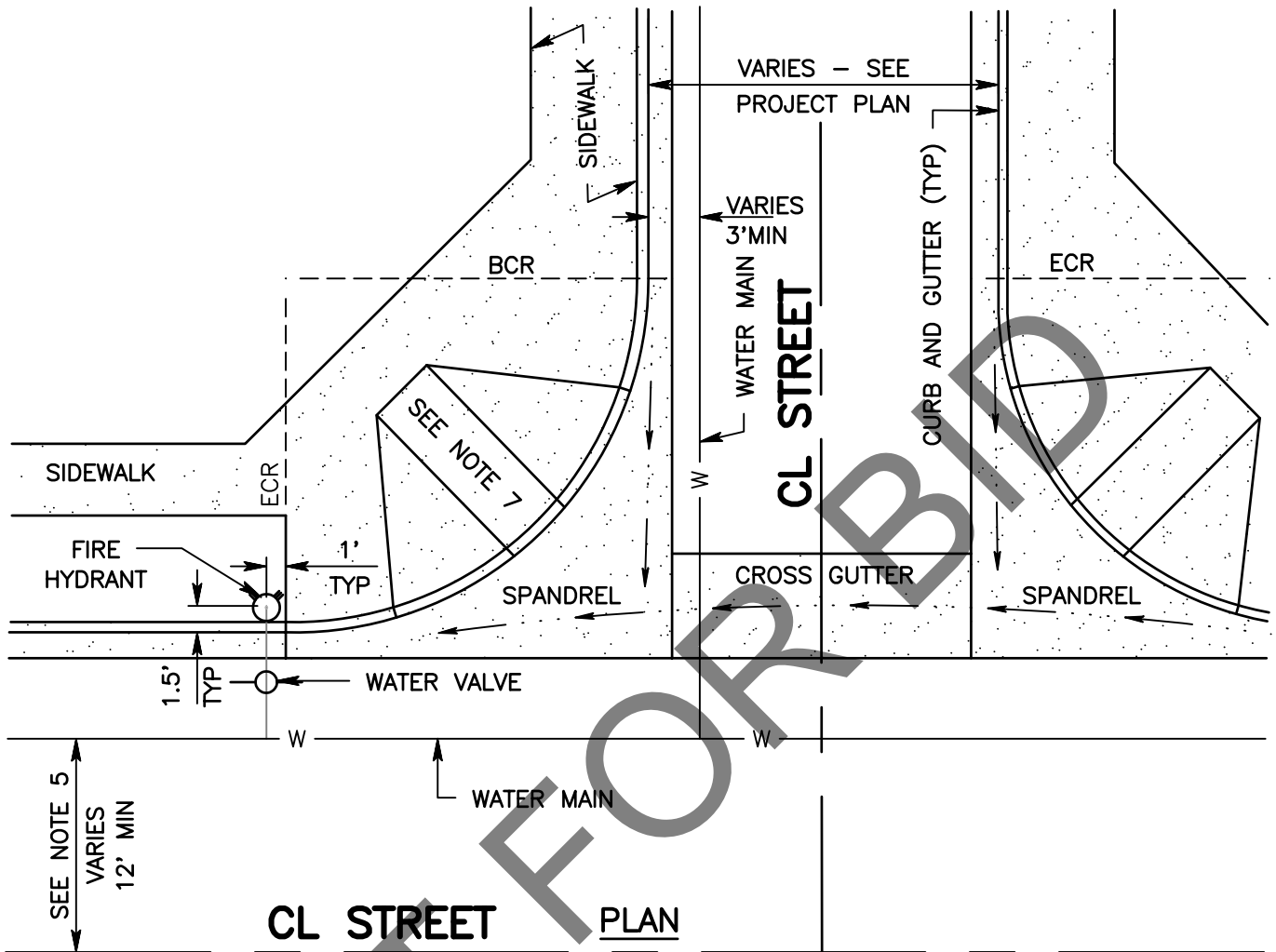
SAN BERNARDINO COUNTY DEPARTMENT OF PUBLIC WORKS

STREET MARKER INSTALLATION

BRENDON P. BIGGS, PE
DIRECTOR OF PUBLIC WORKS/ROAD COMMISSIONER

303B

BCR = BEGIN CURB RETURN
 ECR = END CURB RETURN
 TYP = TYPICAL
 MIN = MINIMUM



NOTES:

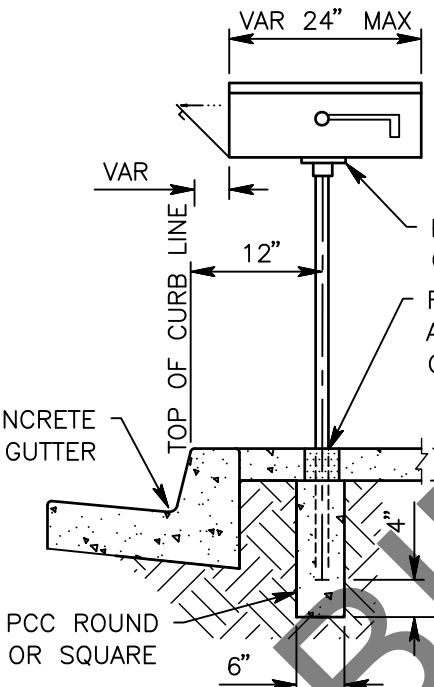
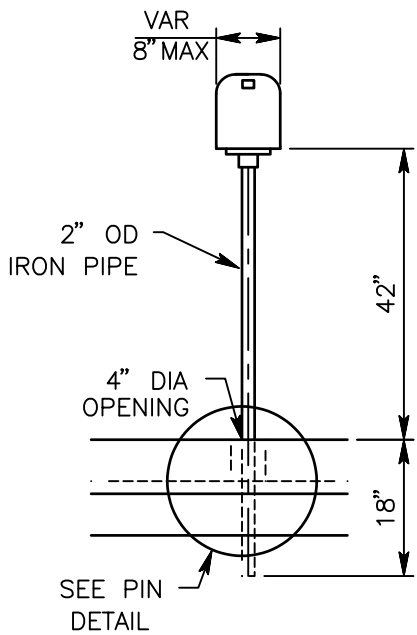
1. LOCATION OF WATER LINES AND VALVES SHALL BE SHOWN ON THE PROJECT PLANS.
2. HYDRANT TO BE SET PLUMB, WITH NOZZLE A MINIMUM OF EIGHTEEN (18") INCHES ABOVE GROUND LEVEL. WHEN HYDRANTS ARE PLACED BEFORE GRADING IS COMPLETED, THE FINAL GRADE LINE, AND ACCESSIBILITY SHOULD BE CONSIDERED.
3. NO OBSTRUCTIONS SUCH AS POLES, GUY LINES, ETC, SHOULD BE PLACED CLOSER THAN FIVE FEET (5') TO HYDRANT.
4. FOR SUBDIVISION IMPROVEMENT PLANS, SEE COUNTY HEALTH DEPARTMENT STANDARDS, SECTION 7, DISTRIBUTION SYSTEMS, FOR MINIMUM DEPTH.
5. FOR RECOMMENDED UTILITY LOCATION SEE STANDARD 311.
6. FOR RIGHT OF WAY LOCATION SEE PROJECT PLANS.
7. FOR CURB RETURN RADIUS AND SIDEWALK RAMP DETAILS SEE STANDARD 110.



SAN BERNARDINO COUNTY DEPARTMENT OF PUBLIC WORKS

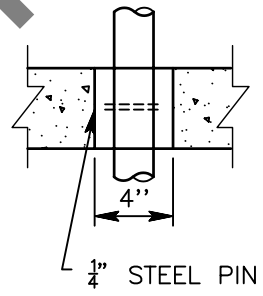
FIRE HYDRANT LOCATION

BRENDON P. BIGGS, PE
 DIRECTOR OF PUBLIC
 WORKS/ROAD
 COMMISSIONER

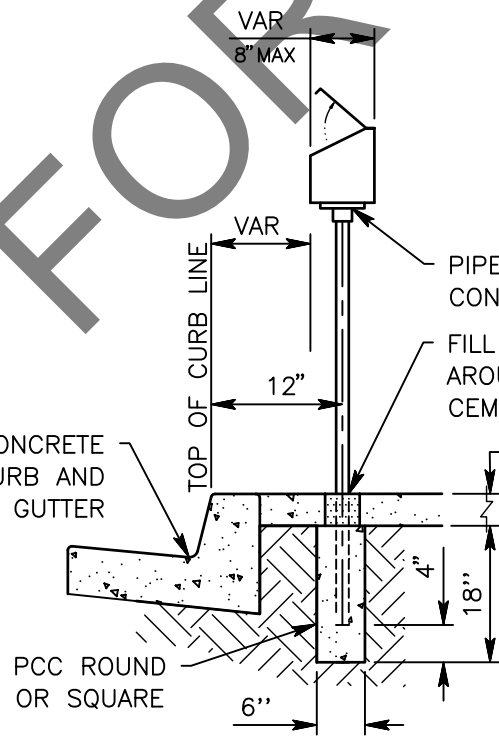
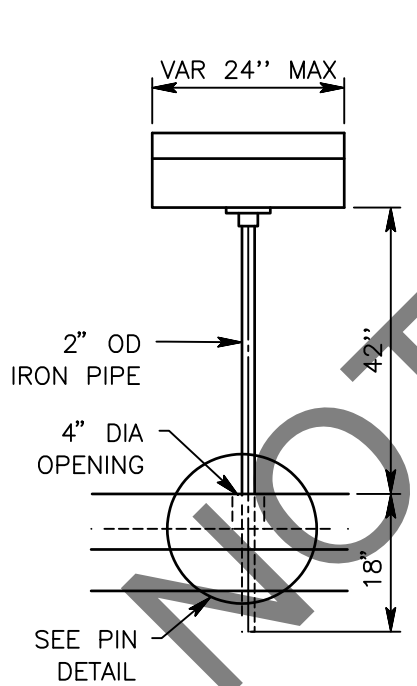


NOTE:
END OPENING MAILBOX
NOT PERMITTED. FACE
OF MAILBOX SHALL
NOT EXTEND PAST
TOP OF CURB LINE.

FRONT OPENING INSTALLATION



PIN DETAIL



TOP OPENING INSTALLATION

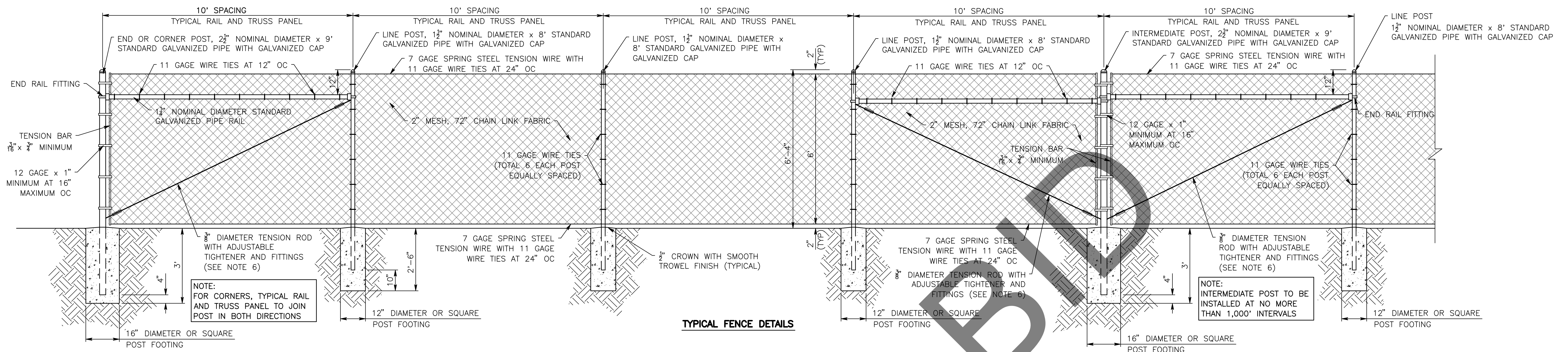
DIA = DIAMETER
MAX = MAXIMUM
OD = OUTSIDE DIAMETER
PCC = PORTLAND CEMENT
CONCRETE
VAR = VARIES



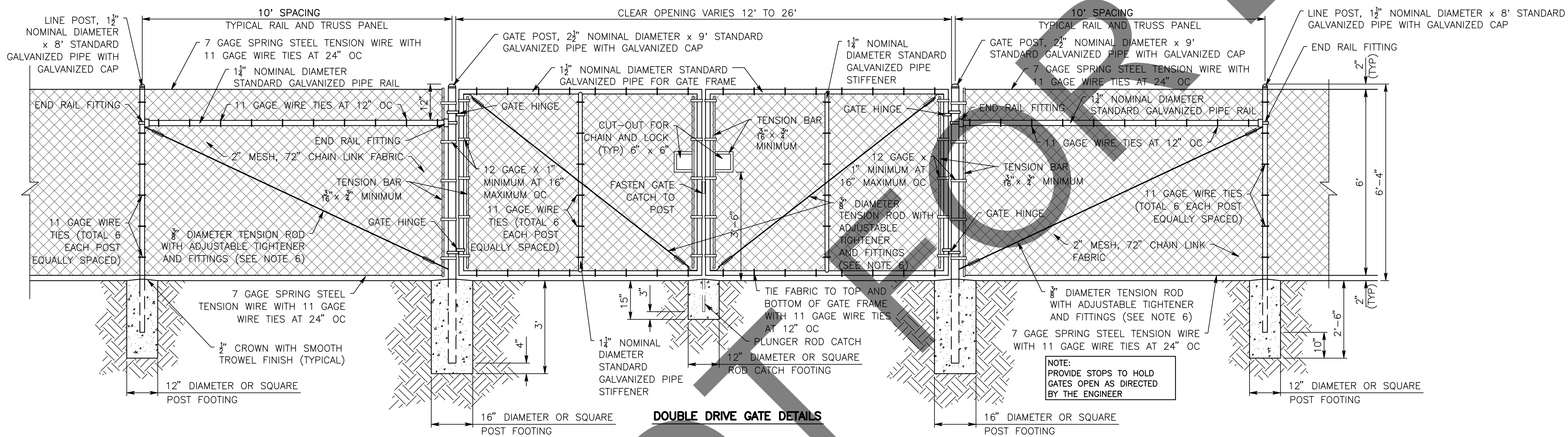
SAN BERNARDINO COUNTY DEPARTMENT OF PUBLIC WORKS

**MAILBOX
(SINGLE INSTALLATION)**

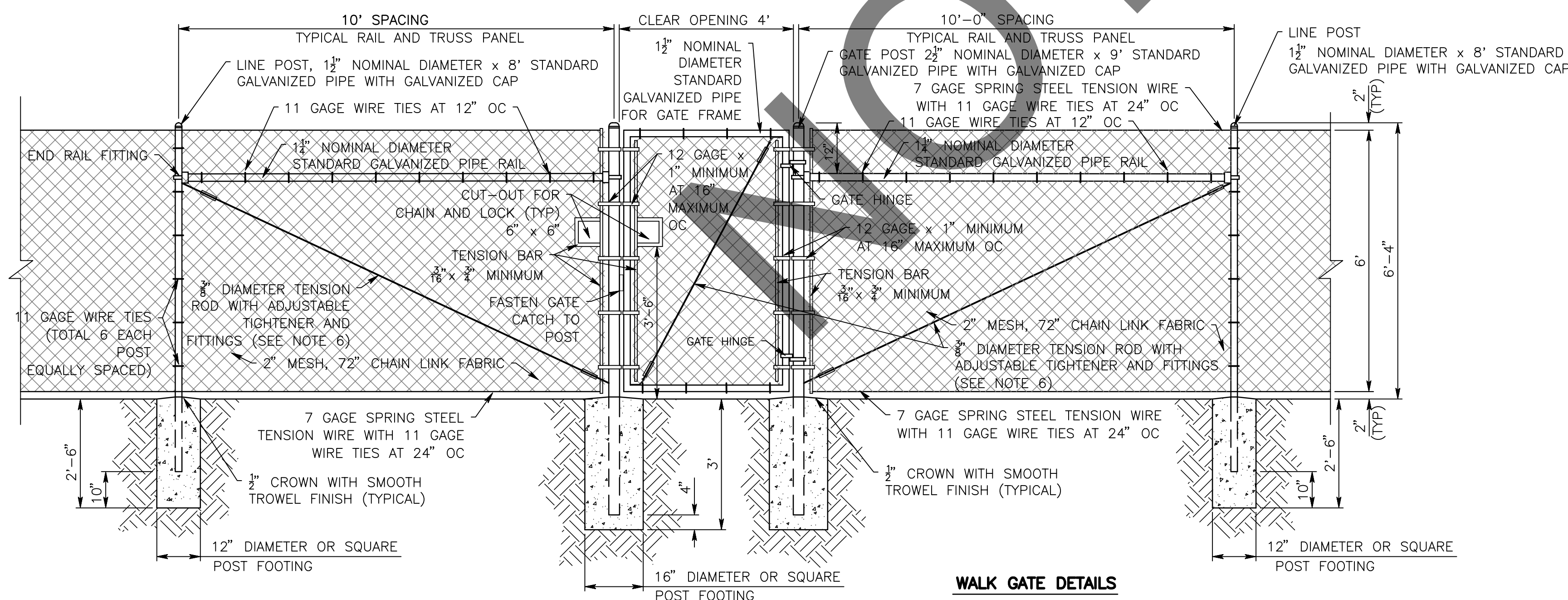
BRENDON P. BIGGS, PE
DIRECTOR OF PUBLIC
WORKS/ROAD
COMMISSIONER



TYPICAL FENCE DETAILS



DOUBLE DRIVE GATE DETAILS



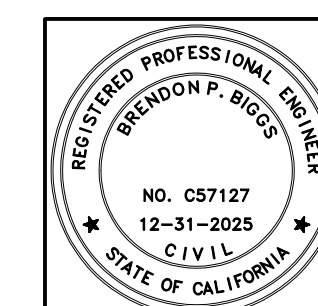
WALK GATE DETAILS

NOMINAL DIAMETER (INCHES)	OUTSIDE DIAMETER (INCHES)	INSIDE DIAMETER (INCHES)	WEIGHT PER FOOT (LBS)
1 1/4	1.660	1.380	2.270
1 1/2	1.900	1.610	2.720
2	2.375	2.067	3.650
2 1/2	2.875	2.469	5.790
3	3.500	3.068	7.580
3 1/2	4.000	3.548	9.110
4	4.500	4.026	10.790
6	6.065	6.065	18.970
8	8.625	7.981	28.550

OC = ON CENTER
TYP = TYPICAL

NOTES:

- ALL CHAIN LINK FENCE MATERIALS, FITTINGS AND INSTALLATION SHALL CONFORM TO THE LATEST CALTRANS STANDARD SPECIFICATIONS, SECTION 80 "FENCES" AND THIS STANDARD DRAWING.
- THE FENCE FABRIC SHALL BE PLACED ON THE OUTWARD FACING SIDE OF THE POST, STRETCHED TAUT AND SECURELY FASTENED, UNLESS OTHERWISE SHOWN ON THE PLANS.
- CLEARANCE BETWEEN RIGHT OF WAY AND FENCE FABRIC SHALL BE 6 INCHES UNLESS OTHERWISE SHOWN ON PLANS.
- ALL GATES SHALL OPEN INWARD, UNLESS NOTED OTHERWISE IN SPECIAL PROVISIONS.
- SECURE GALVANIZED CAP TO POST WITH 3/8" GALVANIZED ROUND HEAD RIVET, OR TACK WELD.
- ADJUSTABLE TIGHTENER SHALL BE TRUSS ROD OR TURNBUCKLE, HAVING A 6" MINIMUM TAKE UP.
- DIAMETER SIZE OF LINE, INTERMEDIATE, CORNER, END AND GATE POSTS TO BE AS SHOWN ON THIS STANDARD DRAWING.
- ALL BOLTED HARDWARE ITEMS SHALL ALSO BE TACK WELDED IN SUCH A MANNER AS TO PREVENT REMOVAL BY UNAUTHORIZED INDIVIDUALS.
- ALL FENCE FABRIC SHALL HAVE A 12 INCH WIDE HORIZONTALLY PAINTED STRIPE ALONG THE CENTER OF THE FABRIC. THE PAINT SHALL BE REFLECTIVE TYPE ORANGE OR APPROVED EQUAL. AFTER FENCE FABRIC HAS BEEN PAINTED, A SAMPLE OF SAID PAINT SHALL BE GIVEN TO THE SAN BERNARDINO COUNTY FLOOD CONTROL DISTRICT, OPERATIONS DIVISION, ALONG WITH MANUFACTURER'S NAME AND PAINT SPECIFICATIONS.
- THE FENCE FABRIC SHALL BE 11 GAUGE UNLESS OTHERWISE SPECIFIED.



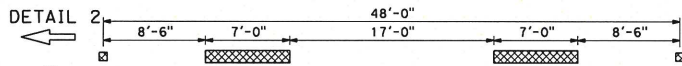
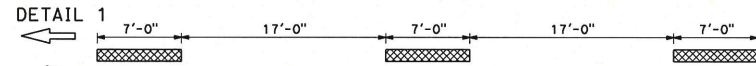
SAN BERNARDINO COUNTY DEPARTMENT OF PUBLIC WORKS

BOUNDARY CHAIN LINK FENCE

BRENDON P. BIGGS, PE
DIRECTOR OF PUBLIC WORKS/ROAD COMMISSIONER

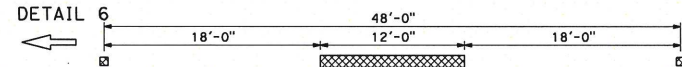
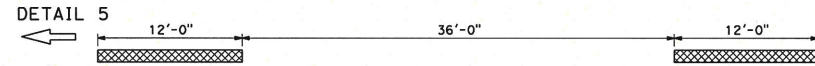
12

CENTERLINES (2 LANE HIGHWAYS)



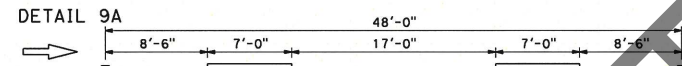
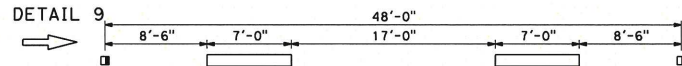
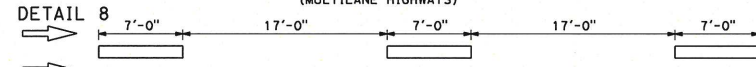
~~DETAIL 3~~ DETAIL 3 DELETED

~~DETAIL 4~~ DETAIL 4 DELETED

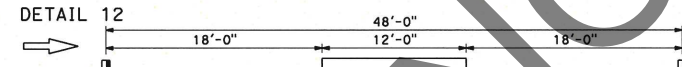
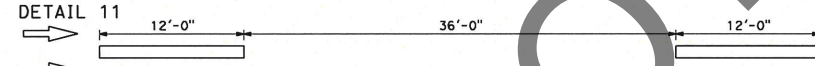


~~DETAIL 7~~ DETAIL 7 DELETED

LANE LINES (MULTILANE HIGHWAYS)



~~DETAIL 10~~ DETAIL 10 DELETED



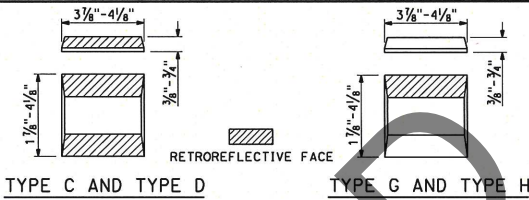
~~DETAIL 13~~ DETAIL 13 DELETED

~~DETAIL 14~~ DETAIL 14 DELETED

~~DETAIL 14A~~ DETAIL 14A DELETED

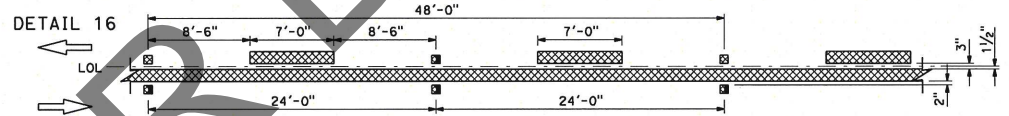
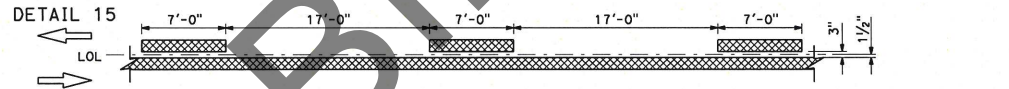
LEGEND:

- TYPE C RED-CLEAR RETROREFLECTIVE MARKER
- TYPE D TWO-WAY YELLOW RETROREFLECTIVE MARKER
- TYPE G ONE-WAY CLEAR RETROREFLECTIVE MARKER
- TYPE H ONE-WAY YELLOW RETROREFLECTIVE MARKER
- 6" WHITE LINE
- 6" YELLOW LINE

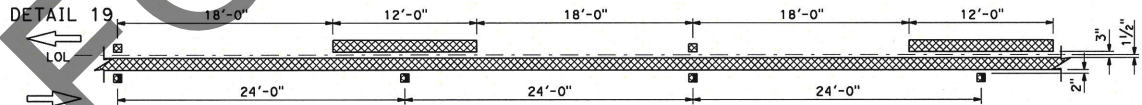
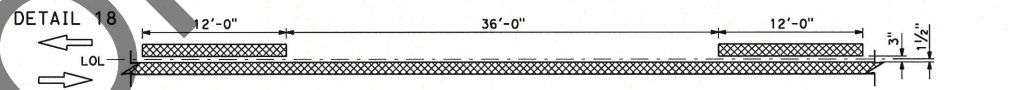


MARKER DETAILS

NO PASSING ZONES - ONE DIRECTION

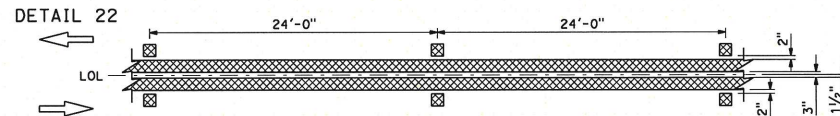
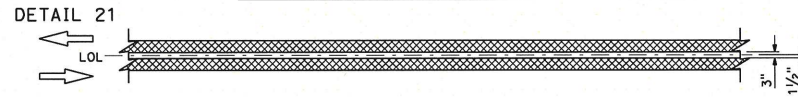


~~DETAIL 17~~ DETAIL 17 DELETED



~~DETAIL 20~~ DETAIL 20 DELETED

NO PASSING ZONES - TWO DIRECTION



~~DETAIL 23~~ DETAIL 23 DELETED

STATE OF CALIFORNIA
DEPARTMENT OF TRANSPORTATION

PAVEMENT MARKERS AND TRAFFIC LINES TYPICAL DETAILS

NO SCALE

A20A

DIST	COUNTY	ROUTE	POST MILES TOTAL PROJECT	SHEET No.	TOTAL SHEETS

REGISTERED CIVIL ENGINEER

May 1, 2023
PLANS APPROVAL DATE

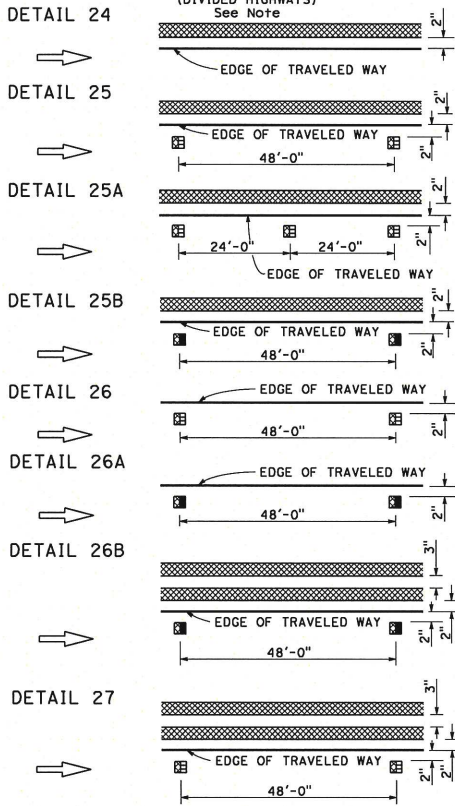
THE STATE OF CALIFORNIA OR ITS OFFICERS OR AGENTS SHALL NOT BE RESPONSIBLE FOR THE ACCURACY OR COMPLETENESS OF SCANNED COPIES OF THIS PLAN SHEET.

Yuh Wong
No. CB2065
Exp. 3-31-24
CIVIL ENGINEER
STATE OF CALIFORNIA

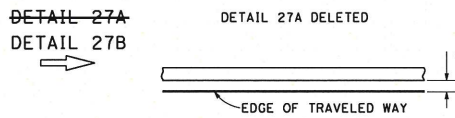
2023 STANDARD PLAN A20A

LEFT EDGE LINES

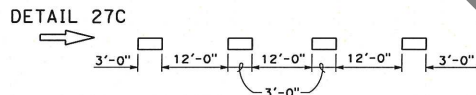
(DIVIDED HIGHWAYS)
See Note



RIGHT EDGE LINES

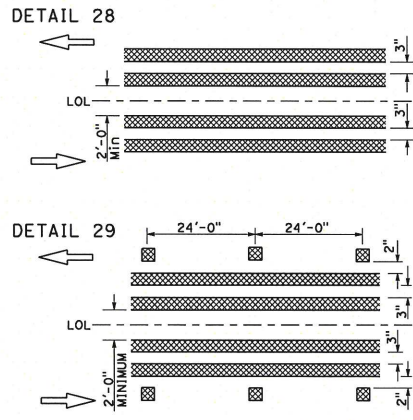


RIGHT EDGE LINE EXTENSION THROUGH INTERSECTIONS

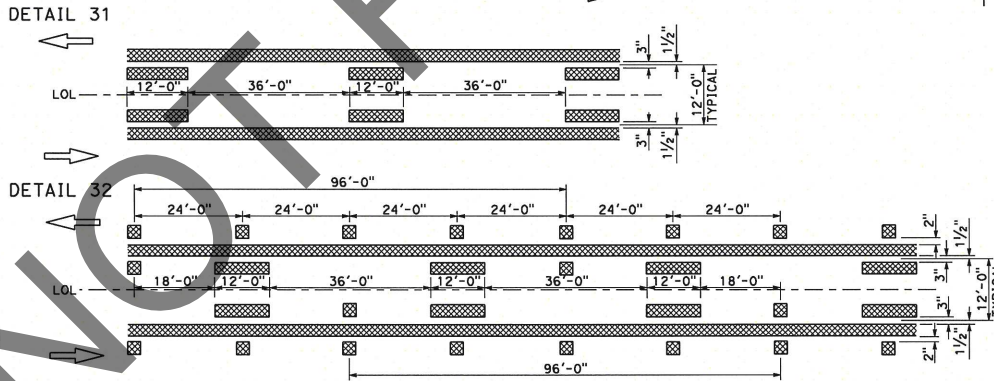


LEFT EDGE LINES NOTE:
On freeways use traffic stripe details with Type RY markers.

MEDIAN ISLANDS



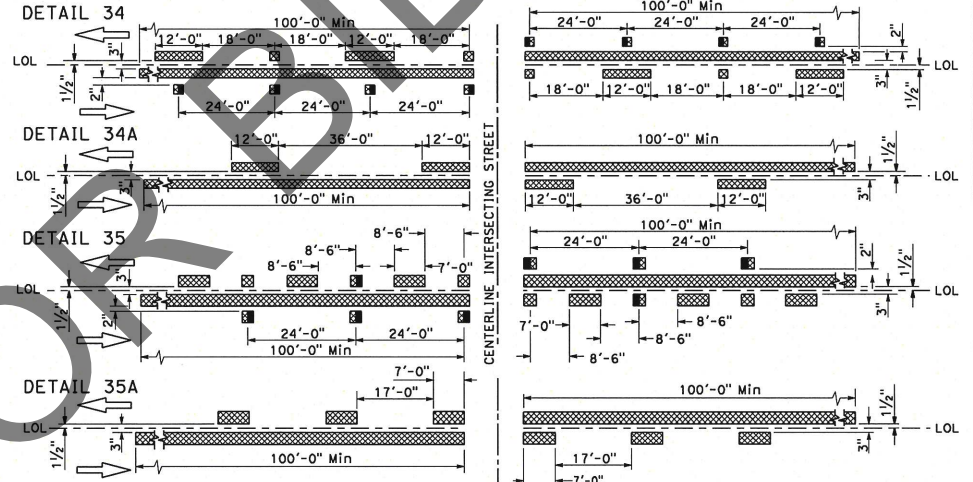
TWO-WAY LEFT TURN LANES



LEGEND:

- TYPE D TWO-WAY YELLOW RETROREFLECTIVE MARKER
- TYPE H ONE-WAY YELLOW RETROREFLECTIVE MARKER
- TYPE RY RED-YELLOW RETROREFLECTIVE MARKER
- 6" WHITE LINE
- 6" YELLOW LINE

INTERSECTION TREATMENTS



Dist	COUNTY	ROUTE	POST MILES TOTAL PROJECT	SHEET No.	TOTAL SHEETS

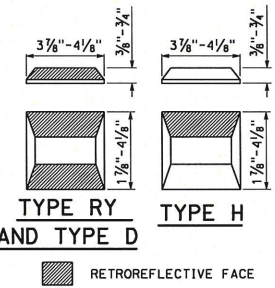
REGISTERED CIVIL ENGINEER

Yue Wang
No. C82065
Exp. 3-31-24
CIVIL

May 1, 2023
PLANS APPROVAL DATE

THE STATE OF CALIFORNIA OR ITS OFFICERS OR AGENTS SHALL NOT BE RESPONSIBLE FOR THE ACCURACY OR COMPLETENESS OF SCANNED COPIES OF THIS PLAN SHEET.

MARKER DETAILS

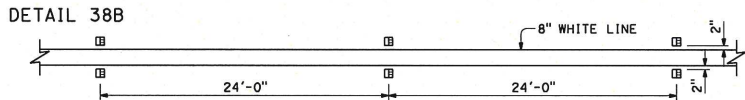
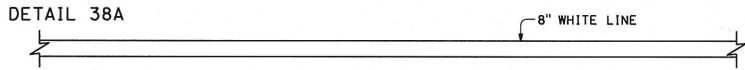
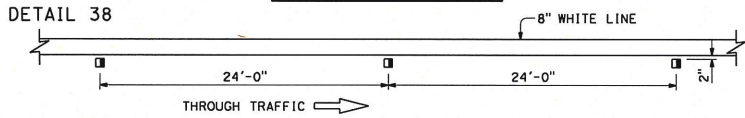


PAVEMENT MARKERS AND TRAFFIC LINES TYPICAL DETAILS

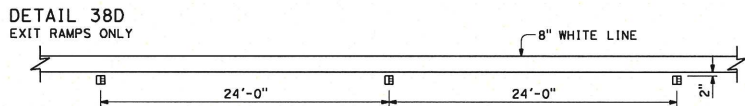
NO SCALE

A20B

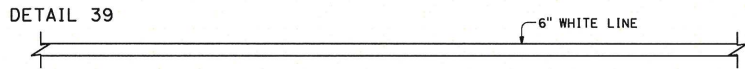
CHANNELIZING LINE



DETAIL 38C
DETAIL 38C DELETED



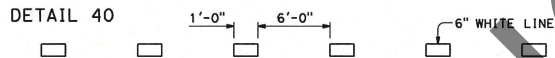
BIKE LANE LINE



INTERSECTION LINE BIKE LANE

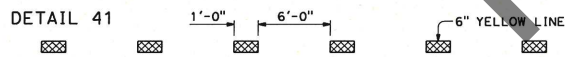


LANE LINE EXTENSIONS THROUGH INTERSECTIONS

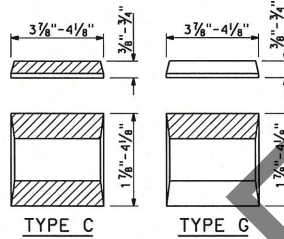


DETAIL 40A
DETAIL 40A DELETED

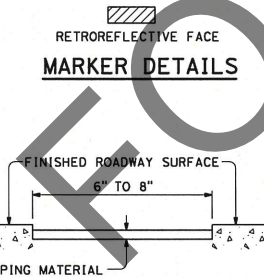
CENTERLINE EXTENSIONS THROUGH INTERSECTIONS



DETAIL 41A
DETAIL 41A DELETED



MARKER DETAILS



DETAIL FOR RECESSED TRAFFIC STRIPE

See Notes A and B

RECESSED NOTES:

- A. See typical traffic line details for pavement marking patterns.
- B. See Standard Specifications for recess depth and recess striping material thickness.

LEGEND:

- TYPE C RED-CLEAR RETROREFLECTIVE MARKER
- TYPE G ONE-WAY CLEAR RETROREFLECTIVE MARKER
- 6" YELLOW LINE

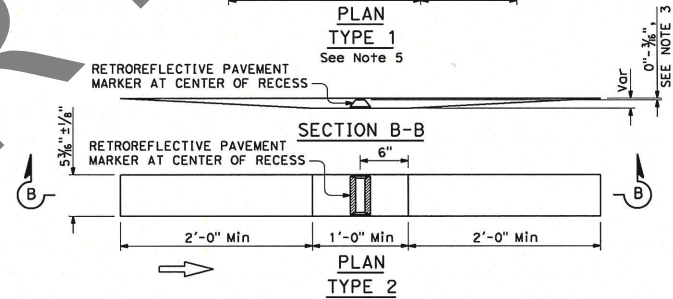
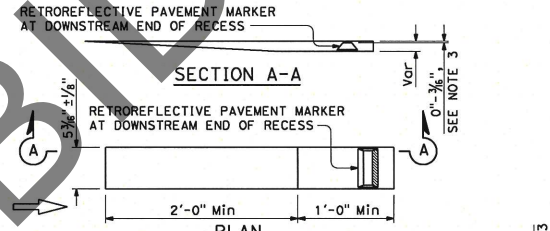
Dist	COUNTY	ROUTE	POST MILES TOTAL PROJECT	SHEET No.	TOTAL SHEETS

REGISTERED CIVIL ENGINEER

May 1, 2023
PLANS APPROVAL DATE

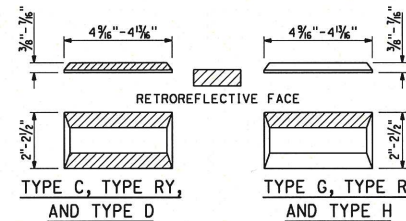
Yue Wang
No. C82065
Exp. 3-31-24
CIVIL
STATE OF CALIFORNIA

THE STATE OF CALIFORNIA OR ITS OFFICERS OR AGENCIES SHALL NOT BE RESPONSIBLE FOR THE ACCURACY OR COMPLETENESS OF SCANNED COPIES OF THIS PLAN SHEET.



RECESS DETAIL FOR RETROREFLECTIVE PAVEMENT MARKER

See Note 4



RETROREFLECTIVE PAVEMENT MARKER FOR RECESSED INSTALLATION

See Notes 1 and 2

RECESSED MARKER NOTES:

1. See typical traffic line details for marker patterns to be used with recessed pavement markers.
2. The retroreflective pavement markers shown for recessed installations are not to be used for non-recessed installations.
3. The top of pavement markers installed in recesses shall be 0" to 3/8" below the pavement surface.
4. Use Type 1 recess for pavement markers with one-way retroreflective face. Use Type 2 recess for pavement markers with two-way retroreflective face.
5. For exit ramps, use Type 1 recess for Type R markers with one-way retroreflective face. Reverse the orientation of the recess and place the marker at the upstream end of the recess.

STATE OF CALIFORNIA
DEPARTMENT OF TRANSPORTATION

PAVEMENT MARKERS AND TRAFFIC LINES TYPICAL DETAILS

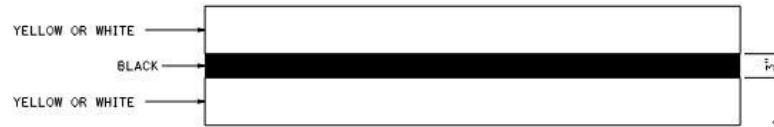
NO SCALE

A20D

DIST	COUNTY	ROUTE	POST MILES TOTAL PROJECT	SHEET No.	TOTAL SHEETS

REGISTERED CIVIL ENGINEER
 May 1, 2023
 PLANS APPROVAL DATE
 THE STATE OF CALIFORNIA OR ITS OFFICERS OR AGENTS SHALL NOT BE RESPONSIBLE FOR THE ACCURACY OR COMPLETENESS OF SCANNED COPIES OF THIS PLAN SHEET.

Yuse Wong
 No. CE20085
 1-31-24
 CIVIL
 STATE OF CALIFORNIA



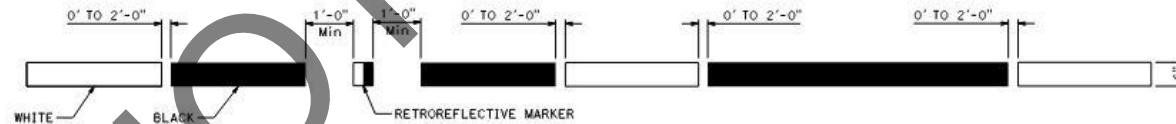
TYPICAL DOUBLE STRIPE CONTRAST DETAIL

NOTES:

1. See Standard Plans A20A, A20B, A20C, A20D and A20F for traffic lines typical details.
2. Detail 9 Traffic stripe shown. See project plans for traffic stripe details.



OPTION 1
TYPICAL LANE LINE OR RIGHT EDGE LINE CONTRAST DETAIL



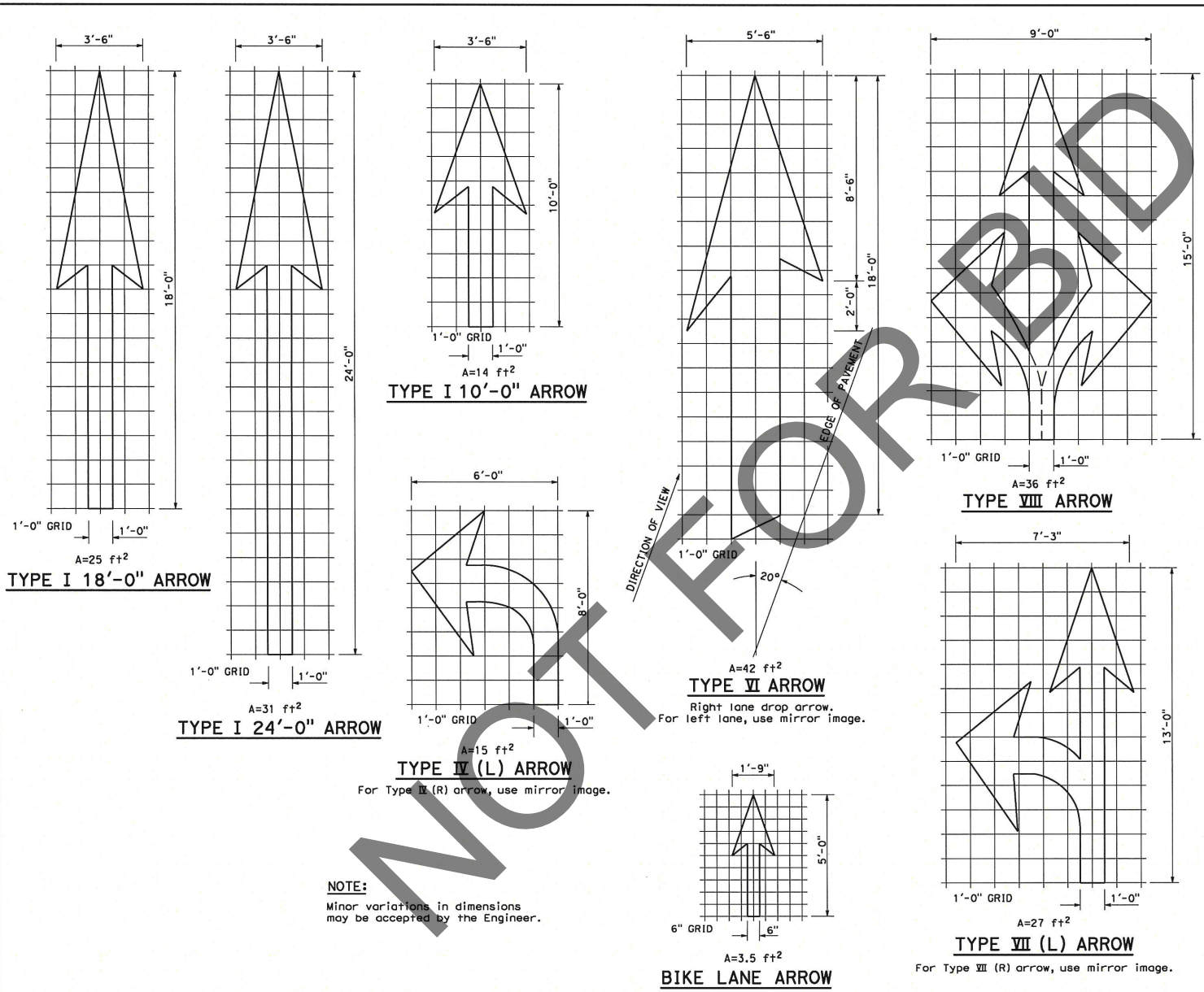
OPTION 2
TYPICAL LANE LINE CONTRAST DETAIL

See Note 2

STATE OF CALIFORNIA
 DEPARTMENT OF TRANSPORTATION
**TRAFFIC LINES
 TYPICAL DETAILS
 FOR CONTRAST STRIPING**
 NO SCALE

A20E

2023 STANDARD PLAN A20E



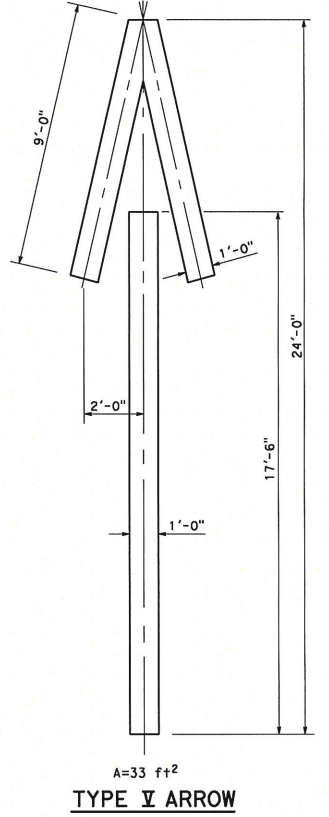
NOTE:
 Minor variations in dimensions may be accepted by the Engineer.

Dist	COUNTY	ROUTE	POST MILES TOTAL PROJECT	SHEET No.	TOTAL SHEETS

REGISTERED CIVIL ENGINEER
 Yue Wang
 No. C82065
 Exp. 3-31-24
 CIVIL ENGINEER
 STATE OF CALIFORNIA

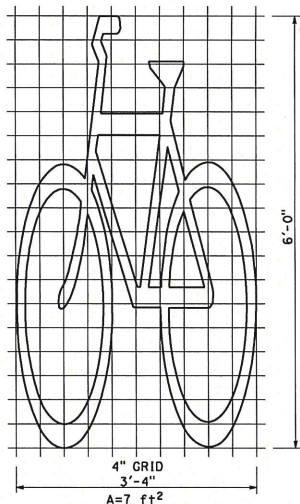
May 1, 2023
 PLANS APPROVAL DATE

THE STATE OF CALIFORNIA OR ITS OFFICERS OR AGENTS SHALL NOT BE RESPONSIBLE FOR THE ACCURACY OR COMPLETENESS OF SCANNED COPIES OF THIS PLAN SHEET.

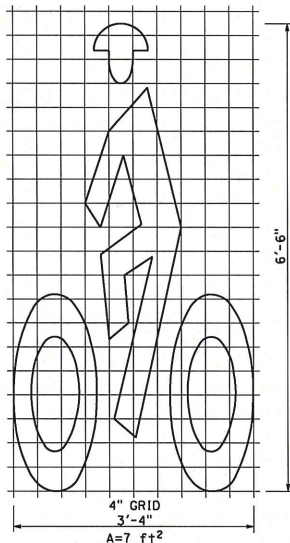


STATE OF CALIFORNIA
 DEPARTMENT OF TRANSPORTATION
PAVEMENT MARKINGS ARROWS
 NO SCALE

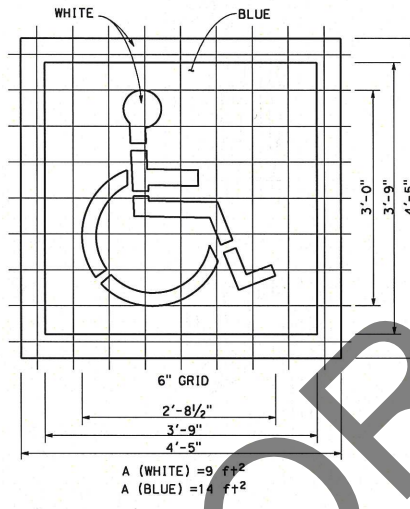
A24A



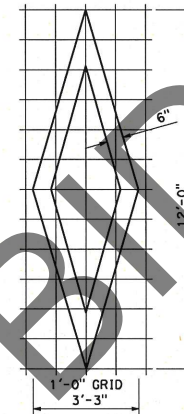
**BIKE LANE SYMBOL
WITHOUT PERSON**



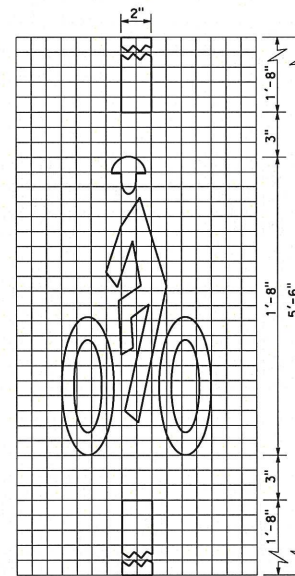
**BIKE LANE SYMBOL
WITH PERSON**



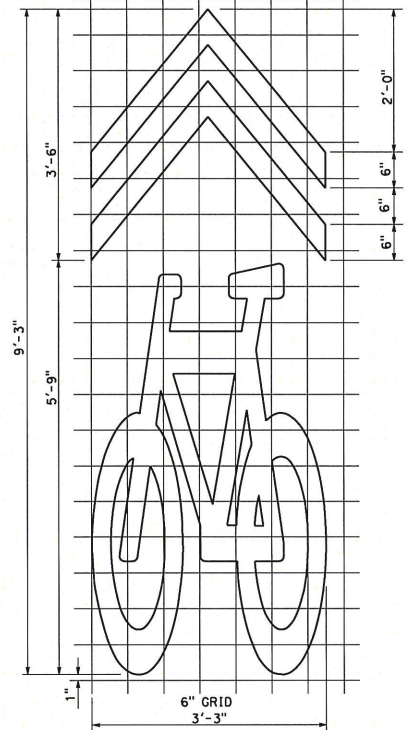
**INTERNATIONAL SYMBOL OF
ACCESSIBILITY (ISA) MARKING**



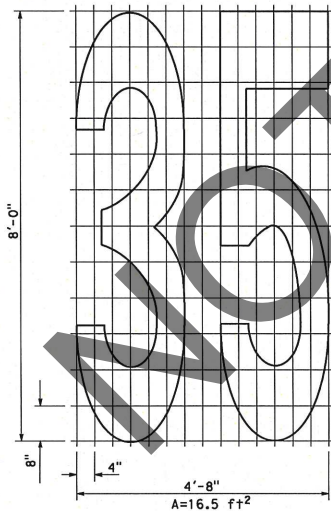
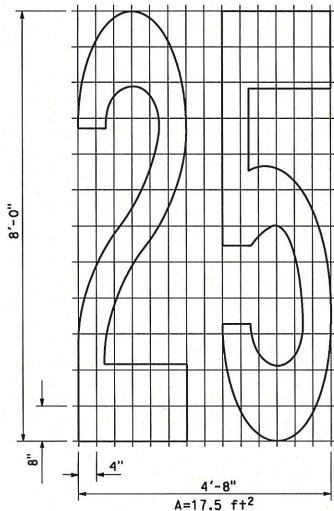
DIAMOND SYMBOL



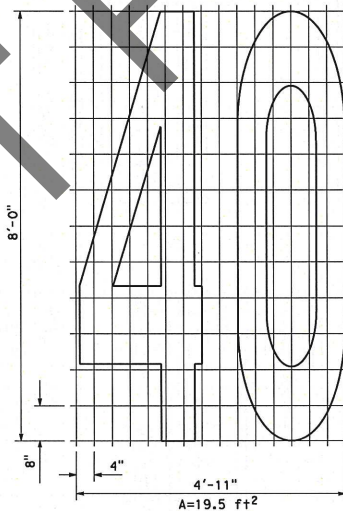
**BICYCLE LOOP
DETECTOR SYMBOL**



SHARED ROADWAY BICYCLE MARKING



NUMERALS



A = 19.5 ft²

Dist.	COUNTY	ROUTE	POST MILES TOTAL PROJECT	SHEET No.	TOTAL SHEETS

REGISTERED CIVIL ENGINEER
 Yue Wang
 No. C82065
 Exp. 8-31-24
 CIVIL
 STATE OF CALIFORNIA

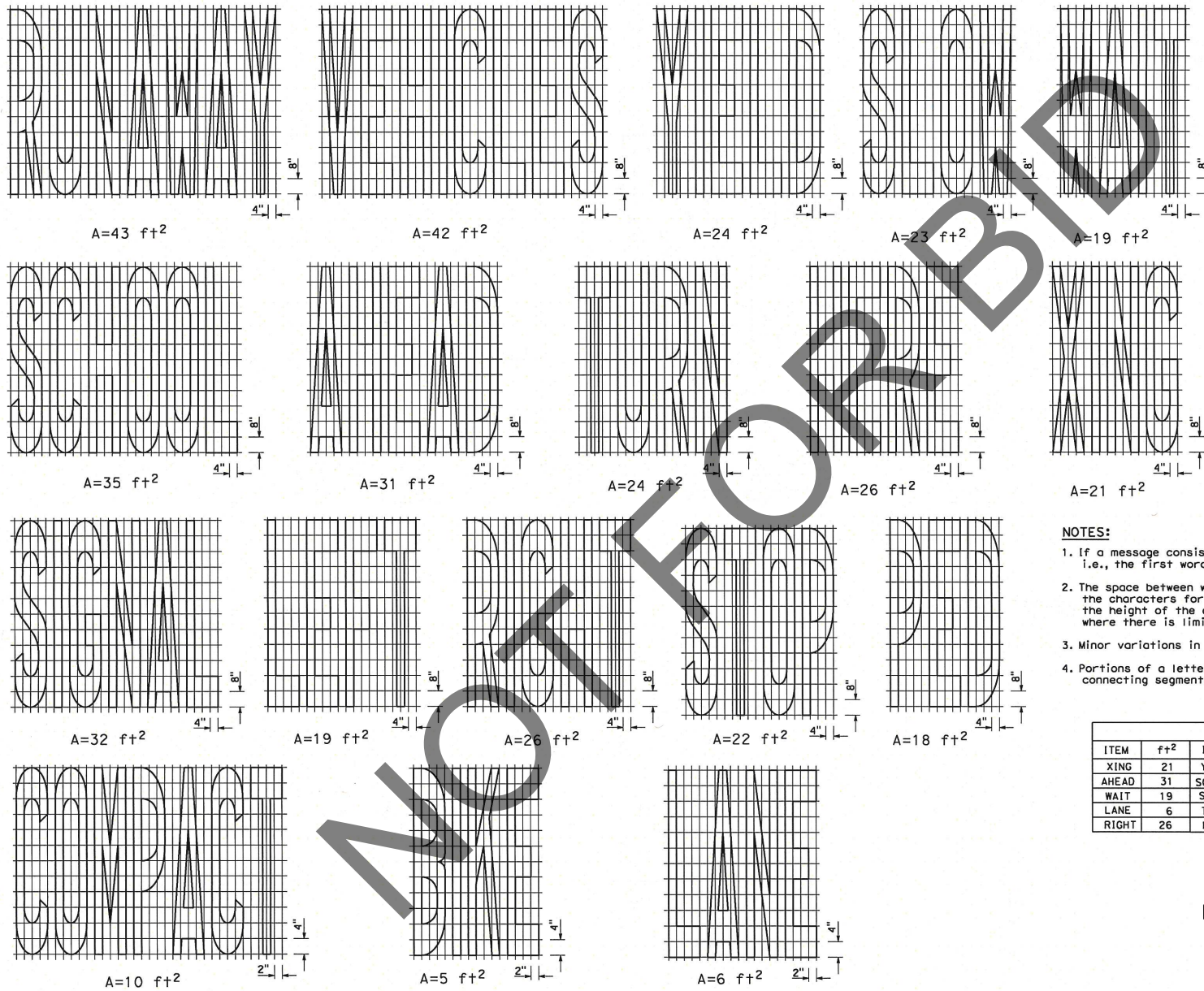
May 1, 2023
 PLANS APPROVAL DATE

THE STATE OF CALIFORNIA OR ITS OFFICERS
 OR AGENTS SHALL NOT BE RESPONSIBLE FOR
 THE ACCURACY OR COMPLETENESS OF SCANNED
 COPIES OF THIS PLAN SHEET.

NOTE:
Minor variations in dimensions may be accepted by the Engineer.

STATE OF CALIFORNIA
DEPARTMENT OF TRANSPORTATION
**PAVEMENT MARKINGS
SYMBOLS AND NUMERALS**
NO SCALE

A24C



Dist	COUNTY	ROUTE	POST MILES TOTAL PROJECT	SHEET No.	TOTAL SHEETS

REGISTERED CIVIL ENGINEER

Yun Wong
No. C2065
Exp. 3-31-24
CIVIL
STATE OF CALIFORNIA

PLANS APPROVAL DATE
May 1, 2023

THE STATE OF CALIFORNIA OR ITS OFFICERS OR AGENTS SHALL NOT BE RESPONSIBLE FOR THE ACCURACY OR COMPLETENESS OF SCANNED COPIES OF THIS PLAN SHEET.

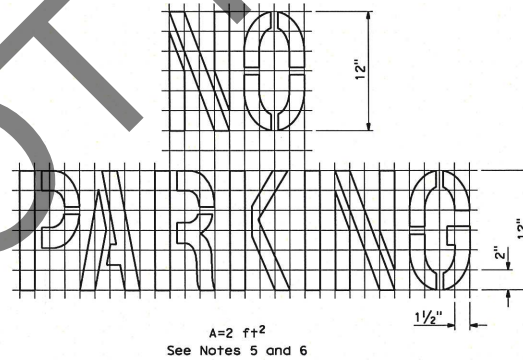
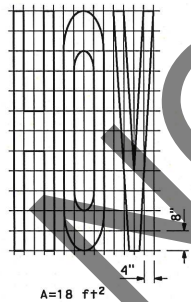
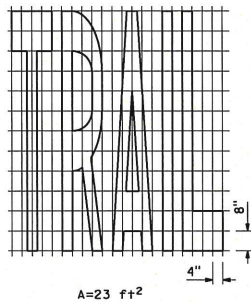
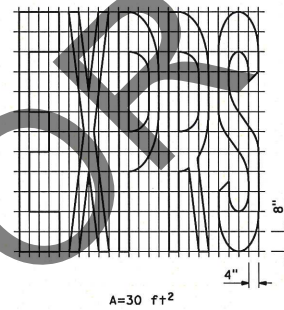
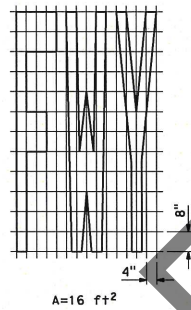
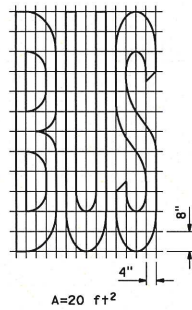
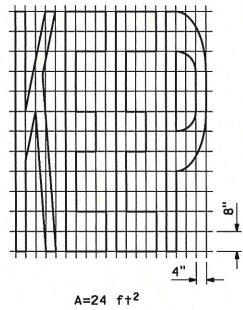
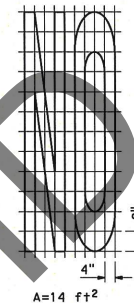
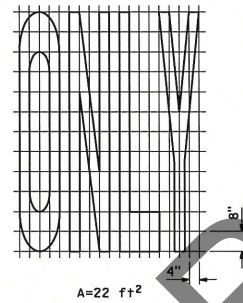
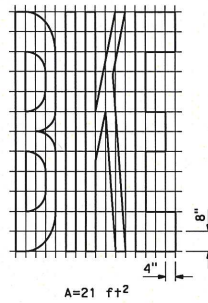
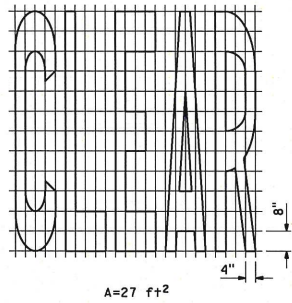
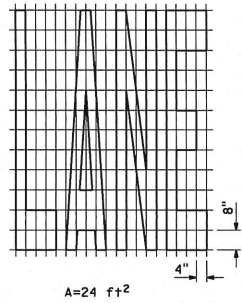
NOTES:

1. If a message consists of more than one word, it must read "UP", i.e., the first word must be nearest the driver.
2. The space between words must be at least four times the height of the characters for low speed roads, but not more than ten times the height of the characters. The space may be reduced appropriately where there is limited space because of local conditions.
3. Minor variations in dimensions may be accepted by the Engineer.
4. Portions of a letter, number or symbol may be separated by connecting segments not to exceed 2" in width.

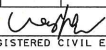
WORD MARKINGS							
ITEM	ft+2	ITEM	ft+2	ITEM	ft+2	ITEM	ft+2
XING	21	YIELD	24	BIKE	5	PED	18
AHEAD	31	SCHOOL	35	SLOW	23	COMPACT	10
WAIT	19	SIGNAL	32	STOP	22	RUNAWAY	43
LANE	6	TURN	24	LEFT	19	VEHICLES	42
RIGHT	26	HERE	26				

STATE OF CALIFORNIA
DEPARTMENT OF TRANSPORTATION
**PAVEMENT MARKINGS
WORDS**
NO SCALE

A24D



Dist	COUNTY	ROUTE	POST MILES TOTAL PROJECT	SHEET No.	TOTAL SHEETS


 REGISTERED CIVIL ENGINEER
 No. CB2065
 Exp. 3-31-24
 CIVIL
 STATE OF CALIFORNIA

May 1, 2023
 PLANS APPROVAL DATE
 THE STATE OF CALIFORNIA OR ITS OFFICERS OR AGENTS SHALL NOT BE RESPONSIBLE FOR THE ACCURACY OR COMPLETENESS OF SCANNED COPIES OF THIS PLAN SHEET.

NOTES:

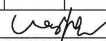
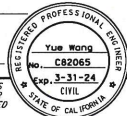
1. If a message consists of more than one word, it must read "UP", i.e., the first word must be nearest the driver.
2. The space between words must be at least four times the height of the characters for low speed roads, but not more than ten times the height of the characters. The space may be reduced appropriately where there is limited space because of local conditions.
3. Minor variations in dimensions may be accepted by the Engineer.
4. Portions of a letter, number, or symbol may be separated by connecting segments not to exceed 2" in width.
5. The words "NO PARKING" pavement marking is to be used for parking facilities. For typical locations of markings, see Standard Plans A90A and A90B.
6. The words "NO PARKING", shall be painted in white letters no less than 1'-0" high on a contrasting background and located so that it is visible to traffic enforcement officials.

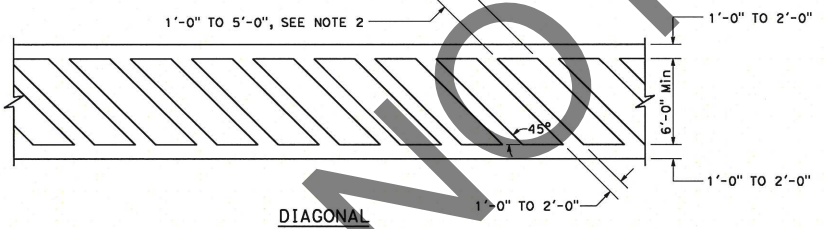
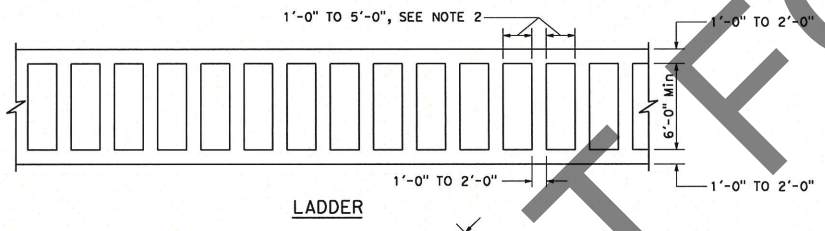
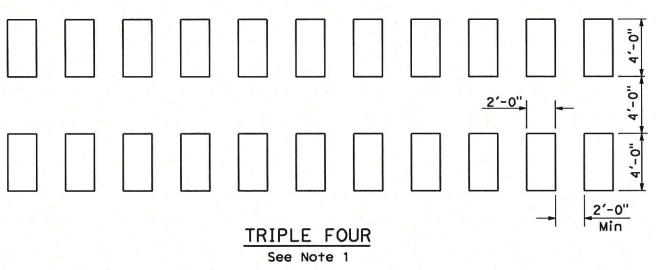
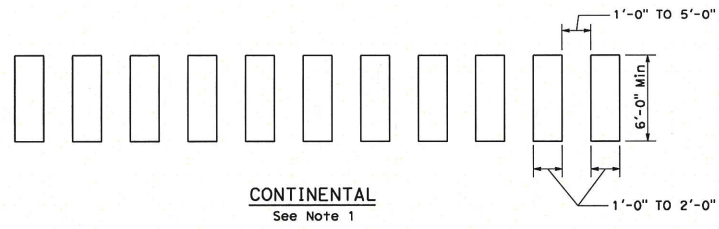
WORD MARKINGS			
ITEM	SOFT	ITEM	SOFT
LANE	24	NO	14
CLEAR	27	BIKE	21
KEEP	24	BUS	20
HOV	18	ONLY	22
TRAIL	23	FWY	16
EXPRS	30		

STATE OF CALIFORNIA
 DEPARTMENT OF TRANSPORTATION
PAVEMENT MARKINGS
WORDS
 NO SCALE

A24E

DIST	COUNTY	ROUTE	POST MILES TOTAL PROJECT	SHEET No.	TOTAL SHEETS

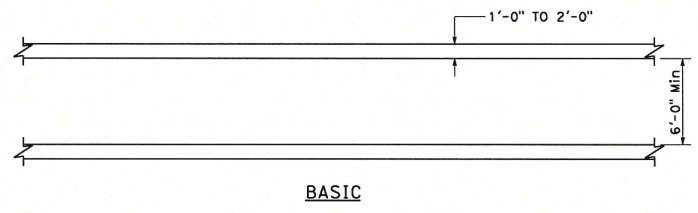
 REGISTERED CIVIL ENGINEER		
May 1, 2023 PLANS APPROVAL DATE	Yue Wang No. C82065 Exp. 3-31-24 CIVIL STATE OF CALIFORNIA	
<small>THE STATE OF CALIFORNIA OR ITS OFFICERS OR AGENTS SHALL NOT BE RESPONSIBLE FOR THE ACCURACY OR COMPLETENESS OF SCANNED COPIES OF THIS PLAN SHEET.</small>		



HIGHER VISIBILITY CROSSWALKS

NOTES:

1. Spaces between markings must be placed in wheel tracks of each lane.
2. Spacings not to exceed 2.5 x width of longitudinal line.
3. All crosswalk markings must be white except those near schools must be yellow.



STATE OF CALIFORNIA
DEPARTMENT OF TRANSPORTATION
**PAVEMENT MARKINGS
CROSSWALKS**
NO SCALE

A24F

2023 STANDARD PLAN A24F