

Delegated Authority – Document Review Form

National Initiative to Address COVID-19 Health Disparities

Estimated Funding Amount:

\$24,844,268

Funding Source:

Coronavirus Response and Relief Supplemental Appropriations Act, 2021.

CFDA # 93.391 -- Activities to Support State, Tribal, Local and Territorial (STLT) Health Department Response to Public Health or Healthcare Crises.

Administering Agency: Centers for Disease Control and Prevention.

Match Requirement:

None

Funds Will Be Utilized For:

Funds will be used to support COVID-19 response activities through community partners, support department capacity building, and testing/vaccine expansion.

The majority of funds, approximately \$18,000,000, will be contracted to community partners, as detailed within the application, for assistance with COVID-19 response activities.

Three positions are also included in the budget, but these positions will be contract, temporary, extra help, existing, or the funds will be used to offset costs associated with existing positions. Any new positions will be brought before the Board of Supervisors (Board) for approval.

Application Due Date:

Monday, May 3, 2021

Approval Process:

The Department of Public Health (Department) seeks to utilize the Delegated Authority/Ratification process as outlined in Board Item 51, Recommendation 2.b., to “apply for and accept any grant awards...” in relation to COVID-19 and support our emergency response activities, as approved by the Board of Supervisors on April 6, 2021. If successful, the Department will return to the Board to accept any funds resulting from this application.

**County of San Bernardino, Department of Public Health
COVID-19 Response through Community Collaboration**

Table of Contents

Project Narrative.....	Page 1
Background.....	Page 1
Approach.....	Page 1
Purpose.....	Page 1
Outcomes.....	Page 1
Strategies and Activities.....	Page 2
Collaborations.....	Page 2
Target Populations.....	Page 4
Application Evaluation and Performance Measures Plan.....	Page 5
Organizational Capacity.....	Page 6
Letter from Director.....	Page 7 and 8
Department Organization Chart.....	Page 9
Incident Management Structure Organization Chart.....	Page 10
Key Personnel Positions.....	Page 11
Work Plan.....	Page 12 through 16

Attachments (Not Counted Toward Page Limit)

Project Abstract

Budget Narrative

SF424

SF424A

Risk Assessment Questionnaire

Disclosure of Lobbying Activities

Indirect Rate

Project Narrative

County of San Bernardino, Department of Public Health COVID-19 Response Through Community Collaboration

a. Background

COVID-19 has disproportionately impacted multiple underserved populations within San Bernardino County, has placed a higher risk on those medically underserved, and those with limited access to services. This includes racial and ethnic minority groups, as well as people living in more rural communities. Additionally, racial and ethnic minority groups within the county and people living in more rural communities have disproportionate rates of chronic diseases that increase the severity of COVID-19 infection. If awarded, our hope is to mitigate the impact of COVID-19 on the aforementioned groups with funds made available through this funding opportunity.

b. Approach

i. Purpose

The County of San Bernardino, Department of Public Health will address the COVID-19 pandemic, as detailed above and throughout this application, by working in partnership with the local community.

By working in partnership with the local community, and specifically the underserved local community and its constituent stakeholders, a stronger, more resilient, county will emerge from the COVID-19 pandemic.

ii. Outcomes

Outcomes associated with that grant will include the following. The County of San Bernardino, Department of Public Health, will:

- 1) reduce COVID-19 related health disparities,
- 2) improve and increased testing and contact tracing among populations at higher risk and that are underserved, including racial and ethnic minority groups and people living in rural communities, and
- 3) improve department capacity and services to prevent and control COVID-19 infection (or transmission) among populations at higher risk and that are underserved, including racial and ethnic minority groups and people living in rural communities.

This will be achieved through collaboration with multiple community partners, department staff, and collaboration with other county departments. This will be measured by a longitudinal review of COVID-19 related health outcomes in the aforementioned.

iii. Strategies and Activities

Strategies and activities associated with this grant are including in the Work Plan, page 12 onward. Each strategy and the accompanying activities are separated into Resources and Services, Infrastructure Support, and Partner Mobilization, as indicated in the grant guidance.

None strategies in relation to Data and Reporting were selected.

1. Collaborations

The County of San Bernardino, Department of Public Health will collaborate with a multitude of organizations and entities while implementing this grant. Community Based Organizations (CBOs), Faith Based Organizations (FBOs), Community Partners, staff, educational institutions, and other county departments will be engaged throughout implementation. A large portion of the grant will be contracted to various CBOs, FBOs, educational institutions, as well as other community partners. The department will leverage current relationships and foster new relationships in underserved communities throughout implementation.

Collaboration will also be included at the regional level, which will entail working with the Public Health Alliance of Southern California and near or neighboring health departments.

Due to county procurement policies, vendors are not selected prior to procurement. However, a list of potential community partners and vendors is below and on the following pages.

While not a comprehensive or exhaustive list, it is provided to illustrate the vast potential for partners within the county. The county has established relationships with a majority of these entities and would seek their involvement in the project, as well as others. Again, community collaboration will be a pillar of this project.

Potential partners could include:

- Center for Community Action and Environmental Justice
- Community Action Partnership
- Reach Out
 - Reach Out, including the Latino Health Collaborative
- Mexican Consulate
- Asian American Resource Center
- Congregations Organized for Prophetic Engagement (COPE)

- County and County Affiliated Entities
 - Arrowhead Regional Medical Center
 - Department of Behavioral Health, Social Services
 - Department of Aging and Adult Services
 - Sheriff's Department
 - Probation Department
 - Human Services
 - Department of Behavioral Health
 - Various Public Health Programs
 - Housing Authority of San Bernardino County
 - Department of Economic Development
 - First 5, San Bernardino
 - The diverse 24 cities and towns that makeup the county
- Educational Institutions or Oversight Entities
 - San Bernardino County Superintendent of Schools
 - San Bernardino Valley College
 - Crafton Hills College
 - Individual Schools and School Districts (Kindergarten through 12th grade)
 - San Manuel Gateway College
 - California State University, San Bernardino (CSUSB)
 - The entire Community College District
- Catholic Diocese
- Santa Claus Inc.
- Family Services Association
- El Sol Neighborhood Education Center
- Young Visionaries
- San Bernardino County Medical Society
- Healthcare Plans
 - Inland Empire Health Plan (IEHP)
 - Molina Health
- Hospital Association of Southern California (HASC)
 - Affiliated Hospitals within San Bernardino County
- Community Health Association Inland Southern Region (CHAISR)
- Inland Coalition for Immigration Justice
- The Hope Team
- Second Chance High Desert Food Collaborative
- Council on America Islamic Relation (CAIR)
- Children's Network

- Transitional Age Youth
- Catholic Charities
- Inland Empire Job Corps
- Operation New Hope
- United States Army
- Victor Community Support Services
- YMCA
- Opportunity Youth
- Public Health Alliance of Southern California
- The Blessing Center
- Inland Harvest

- Near or Neighboring City/County Health Departments
 - Imperial
 - Los Angeles
 - Orange
 - Riverside
 - Santa Barbara
 - San Diego
 - Ventura
 - Long Beach
 - Pasadena

2. Target Populations and Health Disparities

Specific target populations under this grant will include African American, Hispanic, Asian American, Pacific Islander, Native American, and/or other racial and ethnic minority groups or people living in both rural and urban communities impacted by COVID-19.

Other target populations will include those experiencing homelessness, persons with disabilities, Non-US born persons, religious minorities, the LGBTQ community, and those live in the most rural areas of the county.

As a department, we have a long history of working with underserved populations and funds will be used to address COVID-19 and advance health equity in racial and ethnic minority groups. We will work to address the pandemic in both urban and rural communities throughout the entire county. It should be noted that San Bernardino County is the largest county in the contiguous United States, in excess of 20,000 square miles.

And while this vast size presents unique challenges, it also provides for unique opportunities.

We will also rely on a robust disease surveillance system and a recently conducted Community Health Assessment to further inform decisions on target populations and need.

c. Application Evaluation and Performance Measures Plan

As per the guidance, we will be provided with performance measures within approximately 45 days of award and we will report quarterly on defined performance measures and participate in evaluation and performance management activities.

We also understand that these reports will be made available to the public.

Project Narrative

County of San Bernardino, Department of Public Health COVID-19 Response Through Community Collaboration

d. Organizational Capacity

As per the guidance, our organizational capacity is illustrated below and on the following pages, in the form of a narrative, Letter From our Director (a), Department Organizational Chart (b), Incident Management Structure Organizational Chart (c), and Key Personnel Positions (d).

The County of San Bernardino, Department of Public Health, has a long history of working with underserved and diverse populations. From the Ryan White Program, to the Black Infant Health Program, and from the Reentry Program, to the Healthy Communities Program, the Department of Public Health has vast experience and capacity to serve the community. The department serves those in need, regardless of beliefs and affiliations.

While we serve all county residents, we serve individuals in both urban and rural areas, those with substance abuse disorders, those experiencing homelessness, religious minorities, those who are non-US born, regardless of immigration status, the recently incarcerated/released, the LGBTQ community, and those with disabilities.

We are a welcoming and inclusive organization, with a mission of:

Working in partnership to promote and improve health, wellness, safety and quality of life in San Bernardino County.

And values that include:

Collaboration, Diversity, Equity, Innovation, and Transparency

During the COVID-19 pandemic, more than ever, services for all groups are critical to the long-term success of our testing and vaccine efforts, as well as the long-term wellbeing of all county residents.

From our Countywide Vision:

We envision a complete county that capitalizes on the diversity of its people, its geography, and its economy to create a broad range of choices for its residents in how they live, work, and play.

We envision a vibrant economy with a skilled workforce that attracts employers who seize the opportunities presented by the county's unique advantages and provide the jobs that create countywide prosperity.

We envision a sustainable system of high-quality education, community health, public safety, housing, retail, recreation, arts and culture, and infrastructure, in which development complements our natural resources and environment.

We envision a model community which is governed in an open and ethical manner, where great ideas are replicated and brought to scale, and all sectors work collaboratively to reach shared goals.

From our valleys, across our mountains, and into our deserts, we envision a county that is a destination for visitors and a home for anyone seeking a sense of community and the best life has to offer.

a. Letter from Director

This letter is located on the following page.



Public Health Administration

Andrew Goldfrach, FACHE
Interim Director

Joshua Dugas, MBA, REHS
Assistant Director

Michael A. Sequeira, M.D.
Health Officer

April 14, 2021

Department of Health and Human Services
Centers for Disease Control and Prevention
Center for State, Tribal, Local, and Territorial Support
Division of Program and Partnership Services
1825 Century Center Blvd., Mailstop V18-1
Atlanta, GA 30345

RE: CDC-RFA-OT21-2103, National Initiative to Address COVID-19 Health Disparities Among Populations at High-Risk and Underserved, Including Racial and Ethnic Minority Populations and Rural Communities

The County of San Bernardino, Department of Public Health (Department), is fully capable of fulfilling the scope of services (Work Plan) as outlined within our grant application.

The Department has a long history of working with underserved populations, and specific to the COVID-19 pandemic, the Department appreciates the opportunity to apply for funds to:

- Reduce COVID-19 related health disparities
- Increase testing and contact tracing in underserved populations
- Increase Department capacity to prevent and control COVID-19

Further, funds will be used to address COVID-19 and advance health equity in racial and ethnic minority groups and rural communities throughout the county (the largest county in the contiguous United States and in excess of 20,000 square miles).

If awarded, the Department looks forward to working with the Centers for Disease Control and Prevention, as well as the many community partners we seek to further partner with.

Respectfully,

Andrew Goldfrach, FACHE
Interim Director, Department of Public Health
Chief Operating Officer, Arrowhead Regional Medical

BOARD OF SUPERVISORS

COL. PAUL COOK (RET.)
First District

JANICE RUTHERFORD
Second District

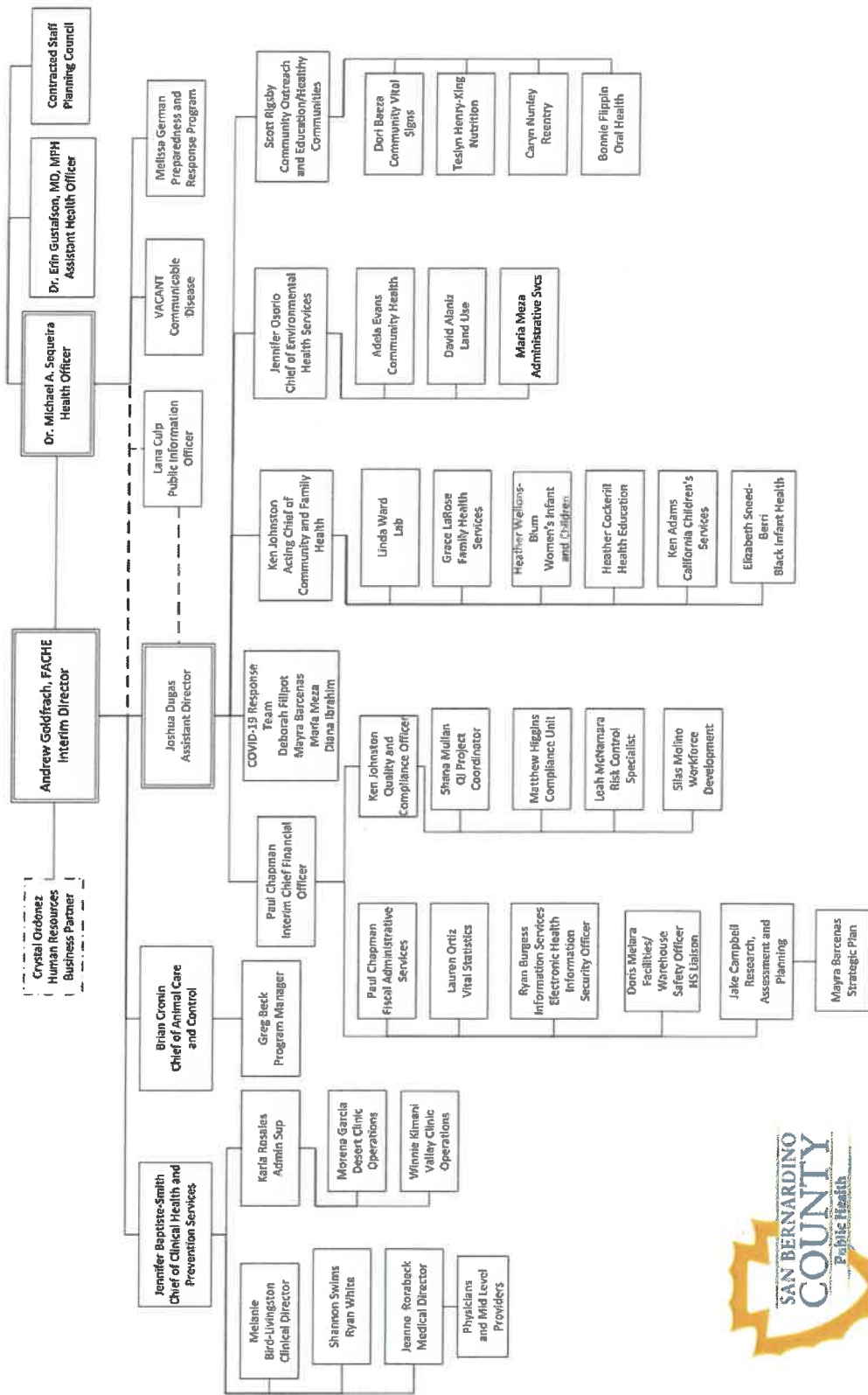
DAWN ROWE
Vice Chair, Third District

CURT HAGMAN
Chairman, Fourth District

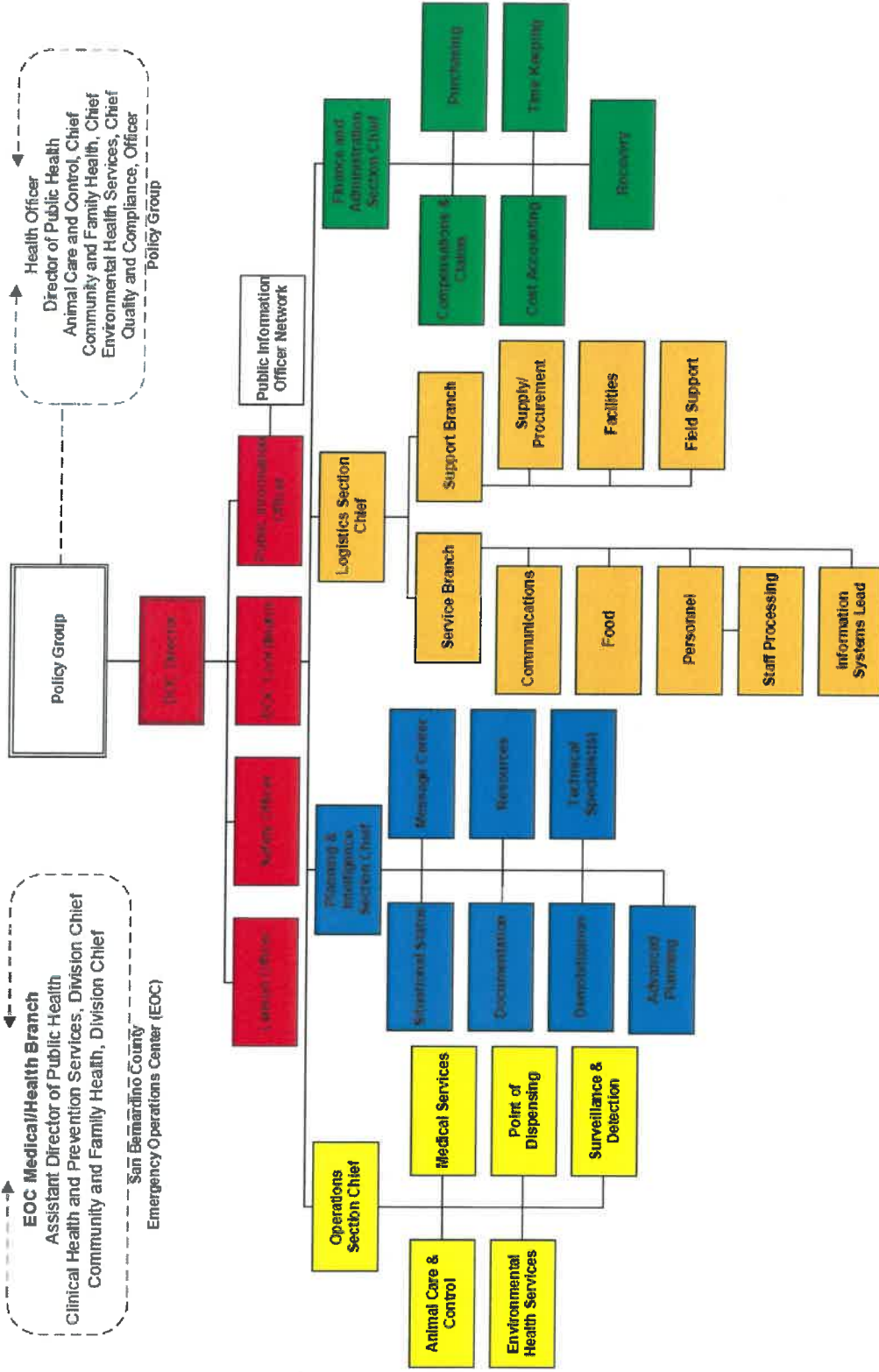
JOE BACA, JR.
Fifth District

Leonard X. Hernandez
Chief Executive Officer

b. Department Organizational Chart



c. Incident Management Structure Organizational Chart



e. Key Personnel Positions

Key Personnel Position 1 – Public Health Program Manager

Description

This position will manage awarded funding and personnel associated with the grant. They will also be responsible for grant oversight, high-level administrative tasks, and reporting. This position may be contract, temporary, extra-help, or include fractions of multiple positions.

Key Personnel Position 2 – Public Health Program Coordinator

Description

This position will assist the Program Manager with grant oversight and coordination, while also working with external partners. This position will also oversee procurement and programmatic reporting. This position may be contract, temporary, extra-help, or include fractions of multiple positions.

Key Personnel Position 3 – Staff Analyst II/Accountant II/III

Description

This position will be responsible for procurement, oversight of contractors, tracking program expenditures, billing/invoicing, and financial reporting. This position may also include Human Services staff of the same classification. This position may be contract, temporary, extra-help, or include fractions of multiple positions.

Other Key Personnel

The positions listed above are not detailed on the two Organizational Charts provided (b and c), as the department positioning of this grant has not yet been determined.

However, other key personnel such as the Director, Assistant Director, Health Officer, and Chief Financial Officer, are shown. These positions will be critical to the grant and its administration, however, they are not detailed above, as they will not be coding time directly to the grant.

f. County of San Bernardino, Work Plan

Strategy Description		1. Expand existing and/or develop new mitigation and prevention resources and services to reduce COVID-19 related disparities among populations at higher risk and that are underserved.	
NOFO Outcome(s) Addressed (Select all that apply)		Reduced COVID-19-related health disparities	
Other Outcome(s) (as identified by applicant)		Improved and increased testing and contact tracing among populations at higher risk and that are underserved, including racial and ethnic minority groups and people living in rural communities.	
Data Source(s) Used to Identify Population(s) of Focus		Local surveillance data and a recently conducted community health assessment	
Estimated Amount of Funding Allocated to Strategy (% of Total Funding and Dollar Amount)		16% or \$4,000,000	Amount of Strategy Funding Allocated for Rural Activities (% and \$ Amount) (if applicable) 8% or \$2,000,000
Technical Assistance Needs		No	If Yes, please describe: NA

Activity 1 Title			
Expand Testing Capacity			
Activity Focus (Select all that apply)	Testing Contact tracing and case investigation Vaccine administration support		
Other Activity Focus (if applicable)			
Racial and Ethnic Population(s) of Focus (Select all that apply)	Alaska Native American Indian Asian Black or African American Hispanic, Latino or Latinx Native Hawaiian and Pacific Islanders	Describe the Racial and Ethnic Population(s) (if applicable)	The County of San Bernardino has a diverse and varied population.
Other Population(s) of Focus (Select all that apply)	People living in rural areas Non-U.S. born persons Religious minority Lesbian, gay, bisexual, transgender, and queer (LGBTQ+) persons People experiencing homelessness	Describe the Rural Community Served (if applicable)	The County of San Bernardino has a diverse and varied population living in both rural and urban areas of the county.
Other Population (if applicable)			
Estimated Reach of Population(s) of Focus	100,000+ per race/ethnicity		
Geographic Area (Select one)	Both		
Setting (Select one)	Local health department		
Other Setting (if applicable)			

Activity Description				
Expand testing capacity by purchasing Take-Home test kits, sharps, PPE, and ancillary supplies.	Contributing Partners	Partner Type (Select one)	Other Partner Type (if applicable)	Key Contracts & Consultants Local and regional suppliers
	Health Department	Local governmental agencies and community leaders		
	Other County Departments	Governmental organizations focused on non-health services		
	Other Healthcare Providers	Health-related organizations (e.g., pharmacies, testing centers, community health workers)		
	Suppliers	Business, corporation, or industry		

Strategy Description	3. Build, leverage, and expand infrastructure support for COVID-19 prevention and control among populations that are at higher risk and underserved		
NOFO Outcome(s) Addressed (Select all that apply)	Reduced COVID-19-related health disparities		
Other Outcome(s) (as identified by applicant)	Improved and increased testing and contact tracing among populations at higher risk and that are underserved, including racial and ethnic minority groups and people living in rural communities		
Data Source(s) Used to Identify Population(s) of Focus	Local surveillance data and a recently conducted community health assessment		
Estimated Amount of Funding Allocated to Strategy (% of Total Funding and Dollar Amount)	6% or \$1,500,000	Amount of Strategy Funding Allocated for Rural Activities (% and \$ Amount) (if applicable)	3% or \$750,000
Technical Assistance Needs	No	If Yes, please describe: NA	

Activity 1 Title	Community Engagement						
Activity Focus (Select all that apply)	Testing Vaccine administration support Evidence-based policies, systems, and environmental strategies to address COVID-19						
Other Activity Focus (if applicable)							
Racial and Ethnic Population(s) of Focus (Select all that apply)	Activity does not address racial and ethnic minority populations		Describe the Racial and Ethnic Population(s) (if applicable)		Activity does not directly impact a specific race or ethnicity but will indirectly impact multiple or the entire county population		
Other Population(s) of Focus (Select all that apply)			Describe the Rural Community Served (if applicable)				
Other Population (if applicable)							
Estimated Reach of Population(s) of Focus	Over 2,000,000 or the entire county population						
Geographic Area (Select one)	Both						
Setting (Select one)	Other - please specify						
Other Setting (if applicable)	Multiple community sites, including community based organizations, faith based organizations, and web based						
Activity Description	Contributing Partners	Partner Type (Select one)	Other Partner Type (if applicable)	Key Contracts & Consultants	Key Deliverables/Outputs	Start Date	End Date
Assistance with Community Health Improvement Plan (CHIP), Community Surveys (Vaccine/Testing Hesitancy, etc.), Town Halls, and Focus Groups	TBD Consultant 1	Other - please specify	Outside Consultant	TBD via procurement	Completion of CHIP by 6/30/2022, Conducting of surveys by 6/30/2023, Conducting of town halls or focus groups by 6/30/2023	7/1/2021	6/30/2023
	TBD Consultant 2	Other - please specify	Outside Consultant				
	TBD Consultant 3	Other - please specify	Outside Consultant				

Activity 2 Title		Department Capacity Building																																																														
Activity Focus (Select all that apply)		Testing Contact tracing and case investigation																																																														
Other Activity Focus (if applicable)																																																																
Racial and Ethnic Population(s) of Focus (Select all that apply)		Describe the Racial and Ethnic Population(s) (if applicable)		Activity does not directly impact a specific race or ethnicity but will indirectly impact multiple or the entire county population																																																												
Other Population(s) of Focus (Select all that apply)		Describe the Rural Community Served (if applicable)																																																														
Other Population (if applicable)																																																																
Estimated Reach of Population(s) of Focus		Over 2,000,000 or the entire county population																																																														
Geographic Area (Select one)		Both																																																														
Setting (Select one)		Local health department																																																														
Other Setting (if applicable)																																																																
<table border="1"> <thead> <tr> <th colspan="2">Activity Description</th> <th>Contributing Partners</th> <th>Partner Type (Select one)</th> <th>Other Partner Type (if applicable)</th> <th>Key Contracts & Consultants</th> <th>Key Deliverables/ Outputs</th> <th>Start Date</th> <th>End Date</th> </tr> </thead> <tbody> <tr> <td colspan="2" rowspan="6">Department Capacity Building via Training, Program Funding, and Health Equity Committee Involvement</td> <td>Health Department</td> <td>Other - please specify</td> <td>Local Health Department</td> <td>TBD via procurement</td> <td>Training and events</td> <td>7/1/2021</td> <td>6/30/2023</td> </tr> <tr><td></td><td></td><td></td><td></td><td></td><td></td><td></td><td></td></tr> <tr><td></td><td></td><td></td><td></td><td></td><td></td><td></td><td></td></tr> <tr><td></td><td></td><td></td><td></td><td></td><td></td><td></td><td></td></tr> <tr><td></td><td></td><td></td><td></td><td></td><td></td><td></td><td></td></tr> <tr><td></td><td></td><td></td><td></td><td></td><td></td><td></td><td></td></tr> </tbody> </table>							Activity Description		Contributing Partners	Partner Type (Select one)	Other Partner Type (if applicable)	Key Contracts & Consultants	Key Deliverables/ Outputs	Start Date	End Date	Department Capacity Building via Training, Program Funding, and Health Equity Committee Involvement		Health Department	Other - please specify	Local Health Department	TBD via procurement	Training and events	7/1/2021	6/30/2023																																								
Activity Description		Contributing Partners	Partner Type (Select one)	Other Partner Type (if applicable)	Key Contracts & Consultants	Key Deliverables/ Outputs	Start Date	End Date																																																								
Department Capacity Building via Training, Program Funding, and Health Equity Committee Involvement		Health Department	Other - please specify	Local Health Department	TBD via procurement	Training and events	7/1/2021	6/30/2023																																																								

Strategy Description	4. Mobilize partners and collaborators to advance health equity and address social determinants of health as they relate to COVID-19 health disparities among populations at higher risk and that are underserved		
NOFO Outcome(s) Addressed (Select all that apply)	Reduced COVID-19-related health disparities		
Other Outcome(s) (as identified by applicant)	Improved and increased testing and contact tracing among populations at higher risk and that are underserved, including racial and ethnic minority groups and people living in rural communities		
Data Source(s) Used to Identify Population(s) of Focus	Local surveillance data and a recently conducted community health assessment		
Estimated Amount of Funding Allocated to Strategy (% of Total Funding and Dollar Amount)	73% or \$19,250,000	Amount of Strategy Funding Allocated for Rural Activities (% and \$ Amount) (if applicable)	37% or \$9,125,000
Technical Assistance Needs	No	If Yes, please describe:	NA

Activity 1 Title	Community Partner Contracts						
Activity Focus (Select all that apply)	Testing Contact tracing and case investigation Vaccine administration support Build community capacity to reach disproportionately affected populations with effective culturally and linguistically tailored programs and practices						
Other Activity Focus (if applicable)							
Racial and Ethnic Population(s) of Focus (Select all that apply)	Alaska Native American Indian Asian Black or African American Hispanic, Latino or Latinx Native Hawaiian and Pacific Islanders		Describe the Racial and Ethnic Population(s) (if applicable)		The County of San Bernardino has a diverse and varied population.		
Other Population(s) of Focus (Select all that apply)	People living in rural areas People experiencing homelessness People with disabilities Non-U.S.-born persons Religious minority Lesbian, gay, bisexual, transgender, and queer (LGBTQ+) persons		Describe the Rural Community Served (if applicable)		The County of San Bernardino has a diverse and varied population living in both rural and urban areas of the county.		
Other Population (if applicable)							
Estimated Reach of Population(s) of Focus	100,000+ per race/ethnicity						
Geographic Area (Select one)	Both						
Setting (Select one)	Other - please specify						
Other Setting (if applicable)	Via Community Based Organizations (CBOs), Faith Based Organizations (FBOs), Community Partners, educational institutions, and at other county departments						
Activity Description	Contributing Partners	Partner Type (Select one)	Other Partner Type (if applicable)	Key Contracts & Consultants	Key Deliverables/Outputs	Start Date	End Date
Community Based Organizations (CBO), Faith Based Organizations (FBO), Community Partners, staff, educational institutions, and other county departments will be engaged	TBD	Academic institutions		A list of over 50 potential community partners is located within the application narrative. Also via procurement.	Procurement and entering of contracts throughout the award term	7/1/2021	8/30/2023
	TBD	Asian American and Pacific Islander Serving Institution					
	TBD	Community-based and civic organizations					
	TBD	Faith-based organizations					
	TBD	Governmental organizations focused on non-health services					
	TBD	Healthcare providers					
	TBD	Health-related organizations (e.g., pharmacies, testing centers, community health workers)					
	TBD	Local governmental agencies and community leaders					
	TBD	Schools/school districts					
	TBD	Social Service Providers					

Activity 2 Title	Advertising and Promotion				
Activity Focus (Select all that apply)	Testing Contact tracing and case investigation Vaccine administration support Build community capacity to reach disproportionately affected populations with effective culturally and linguistically tailored programs and practices				
Other Activity Focus (if applicable)					
Racial and Ethnic Population(s) of Focus (Select all that apply)	Alaska Native American Indian Asian Black or African American Hispanic, Latino or Latinx Native Hawaiian and Pacific Islanders People living in rural areas People experiencing homelessness People with disabilities Non-U.S. born persons Religious minority Lesbian, gay, bisexual, trans/gender, and queer (LGBTQ+) persons				
Other Population(s) of Focus (Select all that apply)	Describe the Rural Community Served (if applicable) The County of San Bernardino has a diverse and varied population living in both rural and urban areas of the county.				
Other Population (if applicable)					
Estimated Reach of Population(s) of Focus	100,000+ per race/ethnicity or population				
Geographic Area (Select one)	Both				
Setting (Select one)	Other - please specify				
Other Setting (if applicable)	Radio, TV, web, print, and mobile				
Activity Description	Advertising via all available media sources and in all available languages				
	Contributing Partners	Partner Type (Select one)	Other Partner Type (if applicable)	Key Contracts & Consultants	Key Deliverables/Outputs Development and dissemination of advertising and promotion
	Local Media - Radio	Other - please specify	Business, corporation, or industry	Local media entities and community partners	7/1/2021
	Local Media - Print	Other - please specify	Business, corporation, or industry		6/30/2023
	Local Media - TV	Other - please specify	Business, corporation, or industry		
	Local Media - Web	Other - please specify	Business, corporation, or industry		
	Local Media - Mobile	Other - please specify	Business, corporation, or industry		
	Partner Media	Community-based and civic organizations	Internal media		

Project Abstract Summary

Funding Opportunity Number:

CDC-RFA-OT21-2103

CFDA(s):

93.391

Applicant Name:

County of San Bernardino, Department of Public Health

Descriptive Title of Applicant's Project:

COVID-19 Response Through Community Collaboration

Project Abstract:

The County of San Bernardino, Department of Public Health (Department), has a long history of working with underserved populations, and seeks to address the COVID-19 pandemic, through community collaboration. Funds will be used to address COVID-19 and advance health equity in racial and ethnic minority groups and rural communities throughout the county (the largest county in the contiguous United States and in excess of 20,000 square miles).

The Department further seeks to reduce COVID-19 related health disparities, increase testing and contact tracing in underserved populations, and increase Department capacity to prevent and control COVID-19. If awarded, the Department looks forward to working with the Centers for Disease Control and Preventions, as well as the many local and regional community partners.

Budget Narrative

County of San Bernardino, Department of Public Health

Salaries

1.0 FTE Public Health Program Manager @ \$116,638 Annually for 24 Months **\$ 233,276**

This position will manage awarded funding and personnel associated with the grant. They will also be responsible for grant oversight, high-level administrative tasks, and reporting. May include contract, temporary, extra-help, existing, or fractions of multiple positions equaling the total.

1.0 FTE Public Health Program Coordinator @ 91,972 Annually for 24 Months **183,944**

This position will assist the Program Manager with grant oversight and coordination, while also working with external partners. This position will also oversee procurement and programmatic reporting. May include contract, temporary, extra-help, existing, or fractions of multiple positions equaling the total.

1.0 FTE Staff Analyst II/Accountant II/III @ 72,103 Annually for 24 Months **144,206**

This position will be responsible for procurement, oversight of contractors, tracking program expenditures, billing/invoicing, and financial reporting. The position may also include Human Services staff of the same classification. May include contract, temporary, extra-help, existing, or fractions of multiple positions equaling the total.

Benefits (51.66 Percent) **290,032**

This line item represents the two year benefits associated with the positions above.

Salaries and Benefits **851,458**

This line item represents the two year salaries and benefits associated with the positions above.

Consultants **500,000**

This line item represents the two year consultant cost in relation to community engagement, completion of the Community Health Improvement Plan, community surveys, town hall facilitation, and training specific to the department and its community partners. Each of these items will have a direct impact on positive COVID-19 recovery outcomes for underserved populations.

Equipment **77,325**

This line represents the two year cost associated with equipment, including computers or other technology options necessary to assist the department and community with equitable COVID-19 response activities and outcomes.

Supplies **4,000,000**

This line item represents the two year cost associated with supplies needed for testing and vaccine expansion, including Take-Home Test Kits, Personal Protective Equipment (PPE), sharps, and other necessary ancillary supplies.

Travel **\$10,000**

This line represents the two year cost associated with staff traveling to testing and vaccine sites throughout the county, which is over 20,000 square miles. This line item also includes transportation costs not captured in the category below, in relation to client transportation, vaccine transport, testing supply transport, and other activities necessary to reach remote and/or rural populations.

Other

Department Capacity Building **1,000,000**

This line item represents the two year cost associated with department capacity building, including support for the department Health Equity Committee, staff training, and program-specific funding for those programs with the ability to positively impact the department's testing and vaccine strategy through promotion other than direct advertising. Capacity building activities may also include client transportation assistance or incentives, nutrition assistance for venerable populations impacted by COVID-19, addressing food insecurity related to COVID-19, school outbreak response activities, and other items directly related to positive COVID-19 recovery outcomes within the diverse populations served.

Advertising **250,000**

This line item represents the two year cost associated with department advertising in relation to COVID-19 response activities (testing and vaccine distribution). This may include radio advertisements, billboards, posters, banners, print, visual, audio, and bus shelter advertisements, each presented in a culturally and linguistically appropriate medium.

Other Total **1,250,000**

Contractual **18,000,000**

This line item represents the two year cost associated with contracting with many community partners, including community based organizations, government partners, healthcare systems, schools, faith based organizations, and others. A detailed list of these potential partners is located within the application narrative. Individual contracts may range from small (less than \$50,000) to large (well over \$1,000,000). This will also include contracted Community Health Works, via small individual contracts, or large institution-specific contracts. This may also include school or district-specific contracts to assist with testing and vaccine promotion.

Direct Costs **24,688,783**

Indirect (18.261) **155,485**

An approved indirect cost rate agreement is attached.

Total	\$ 24,844,268
--------------	----------------------

Application for Federal Assistance SF-424			
* 1. Type of Submission: <input type="checkbox"/> Preapplication <input checked="" type="checkbox"/> Application <input type="checkbox"/> Changed/Corrected Application		* 2. Type of Application: <input checked="" type="checkbox"/> New <input type="checkbox"/> Continuation <input type="checkbox"/> Revision	
		* If Revision, select appropriate letter(s): <input type="text"/> * Other (Specify): <input type="text"/>	
* 3. Date Received: <input type="text"/> Completed by Grants.gov upon submission.		4. Applicant Identifier: <input type="text"/>	
5a. Federal Entity Identifier: <input type="text"/>		5b. Federal Award Identifier: <input type="text"/>	
State Use Only:			
6. Date Received by State: <input type="text"/>		7. State Application Identifier: Choose State... <input type="text"/>	
8. APPLICANT INFORMATION:			
* a. Legal Name: <input type="text"/> County of San Bernardino, Department of Public Health			
* b. Employer/Taxpayer Identification Number (EIN/TIN): <input type="text"/> 95-6002748		* c. Organizational DUNS: <input type="text"/> 1063768610000	
d. Address:			
* Street1: <input type="text"/> 351 N. Mt. View Street2: <input type="text"/> * City: <input type="text"/> San Bernardino County/Parish: <input type="text"/> * State: <input type="text"/> CA: California Province: <input type="text"/> * Country: <input type="text"/> USA: UNITED STATES * Zip / Postal Code: <input type="text"/> 92415-0010			
e. Organizational Unit:			
Department Name: <input type="text"/>		Division Name: <input type="text"/>	
f. Name and contact information of person to be contacted on matters involving this application:			
Prefix: <input type="text"/>		* First Name: <input type="text"/> Joshua	
Middle Name: <input type="text"/>			
* Last Name: <input type="text"/> Dugas			
Suffix: <input type="text"/>			
Title: <input type="text"/> Assistant Director			
Organizational Affiliation: <input type="text"/>			
* Telephone Number: <input type="text"/> (909) 387-6222		Fax Number: <input type="text"/>	
* Email: <input type="text"/> jdugas@dph.sbcounty.gov			

Application for Federal Assistance SF-424

* 9. Type of Applicant 1: Select Applicant Type:

B: County Government

Type of Applicant 2: Select Applicant Type:

Type of Applicant 3: Select Applicant Type:

* Other (specify):

* 10. Name of Federal Agency:

Centers for Disease Control - OSTLTS

11. Catalog of Federal Domestic Assistance Number:

93.391

CFDA Title:

Activities to Support State, Tribal, Local and Territorial (STLT) Health Department Response to Public Health or Healthc

* 12. Funding Opportunity Number:

CDC-RFA-OT21-2103

* Title:

National Initiative to Address COVID-19 Health Disparities Among Populations at High-Risk and Underserved, Including Racial and Ethnic Minority Populations and Rural Communities

13. Competition Identification Number:

CDC-RFA-OT21-2103

Title:

National Initiative to Address COVID-19 Health Disparities Among Populations at High-Risk and Underserved, Including Racial and Ethnic Minority Populations and Rural Communities

14. Areas Affected by Project (Cities, Counties, States, etc.):

Add Attachment

Delete Attachment

View Attachment

* 15. Descriptive Title of Applicant's Project:

COVID-19 Response Through Community Collaboration

Attach supporting documents as specified in agency instructions.

Add Attachments

Delete Attachments

View Attachments

Application for Federal Assistance SF-424**16. Congressional Districts Of:*** a. Applicant * b. Program/Project

Attach an additional list of Program/Project Congressional Districts if needed.

Add Attachment

Delete Attachment

View Attachment

17. Proposed Project:* a. Start Date: * b. End Date: **18. Estimated Funding (\$):**

* a. Federal	<input type="text" value="24,844,268.00"/>
* b. Applicant	<input type="text" value="0.00"/>
* c. State	<input type="text" value="0.00"/>
* d. Local	<input type="text" value="0.00"/>
* e. Other	<input type="text" value="0.00"/>
* f. Program Income	<input type="text" value="0.00"/>
* g. TOTAL	<input type="text" value="24,844,268.00"/>

*** 19. Is Application Subject to Review By State Under Executive Order 12372 Process?**

- ☐ a. This application was made available to the State under the Executive Order 12372 Process for review on .
- ☐ b. Program is subject to E.O. 12372 but has not been selected by the State for review.
- ☒ c. Program is not covered by E.O. 12372.

*** 20. Is the Applicant Delinquent On Any Federal Debt? (If "Yes," provide explanation in attachment.)**☐ Yes ☒ No

If "Yes", provide explanation and attach

Add Attachment

Delete Attachment

View Attachment

21. *By signing this application, I certify (1) to the statements contained in the list of certifications and (2) that the statements herein are true, complete and accurate to the best of my knowledge. I also provide the required assurances** and agree to comply with any resulting terms if I accept an award. I am aware that any false, fictitious, or fraudulent statements or claims may subject me to criminal, civil, or administrative penalties. (U.S. Code, Title 218, Section 1001)**

☒ ** I AGREE

** The list of certifications and assurances, or an internet site where you may obtain this list, is contained in the announcement or agency specific instructions.

Authorized Representative:

Prefix: * First Name:

Middle Name:

* Last Name:

Suffix:

* Title: * Telephone Number: Fax Number: * Email: * Signature of Authorized Representative: * Date Signed:

BUDGET INFORMATION - Non-Construction Programs

OMB Number: 4040-0006
Expiration Date: 02/28/2022

SECTION A - BUDGET SUMMARY

Grant Program Function or Activity (a)	Catalog of Federal Domestic Assistance Number (b)	Estimated Unobligated Funds		New or Revised Budget		
		Federal (c)	Non-Federal (d)	Federal (e)	Non-Federal (f)	Total (g)
1. National Initiative to Address COVID-19 Health Disparities	93.391	\$	\$	\$ 24,844,268.00	\$	\$ 24,844,268.00
2.						
3.						
4.						
5. Totals		\$	\$	\$ 24,844,268.00	\$	\$ 24,844,268.00

Standard Form 424A (Rev. 7-97)
Prescribed by OMB (Circular A-102) Page 1

SECTION B - BUDGET CATEGORIES

6. Object Class Categories	GRANT PROGRAM, FUNCTION OR ACTIVITY				Total (5)
	(1)	(2)	(3)	(4)	
	National Initiative to Address COVID-19 Health Disparities				
a. Personnel	\$ 561,426.00	\$	\$	\$	561,426.00
b. Fringe Benefits	290,032.00				290,032.00
c. Travel	10,000.00				10,000.00
d. Equipment	77,325.00				77,325.00
e. Supplies	4,000,000.00				4,000,000.00
f. Contractual	18,000,000.00				18,000,000.00
g. Construction	0.00				0.00
h. Other	1,750,000.00				1,750,000.00
i. Total Direct Charges (sum of 6a-6h)	24,688,783.00			\$	24,688,783.00
j. Indirect Charges	155,485.00			\$	155,485.00
k. TOTALS (sum of 6i and 6j)	\$ 24,844,268.00	\$	\$	\$	24,844,268.00
7. Program Income	\$ 0.00	\$	\$	\$	0.00

Authorized for Local Reproduction

Standard Form 424A (Rev. 7-97)
Prescribed by OMB (Circular A-102) Page 1A

SECTION C - NON-FEDERAL RESOURCES					
(a) Grant Program	(b) Applicant	(c) State	(d) Other Sources	(e) TOTALS	
8. National Initiative to Address COVID-19 Health Disparities	\$ 0.00	0.00	\$ 0.00	\$ 0.00	0.00
9.					
10.					
11.					
12. TOTAL (sum of lines 8-11)	\$ 0.00	0.00	\$ 0.00	\$ 0.00	0.00
SECTION D - FORECASTED CASH NEEDS					
	Total for 1st Year	1st Quarter	2nd Quarter	3rd Quarter	4th Quarter
13. Federal	\$ 12,422,134.00	\$ 3,105,533.00	\$ 3,105,533.00	\$ 3,105,534.00	\$ 3,105,534.00
14. Non-Federal	\$				
15. TOTAL (sum of lines 13 and 14)	\$ 12,422,134.00	\$ 3,105,533.00	\$ 3,105,533.00	\$ 3,105,534.00	\$ 3,105,534.00
SECTION E - BUDGET ESTIMATES OF FEDERAL FUNDS NEEDED FOR BALANCE OF THE PROJECT					
(a) Grant Program	FUTURE FUNDING PERIODS (YEARS)				
	(b) First	(c) Second	(d) Third	(e) Fourth	
16. National Initiative to Address COVID-19 Health Disparities	\$ 3,105,533.00	\$ 3,105,533.00	\$ 3,105,534.00	\$ 3,105,534.00	
17.					
18.					
19.					
20. TOTAL (sum of lines 16 - 19)	\$ 3,105,533.00	\$ 3,105,533.00	\$ 3,105,534.00	\$ 3,105,534.00	
SECTION F - OTHER BUDGET INFORMATION					
21. Direct Charges:	\$24,688,783	22. Indirect Charges: \$155,485			
23. Remarks:	\$24,844,268 over 24 months, \$3,105,533 or \$3,105,534 per quarter, estimated				

Authorized for Local Reproduction

Attachment G

PERFORMANCE PROGRESS and MONITORING REPORT OFR Risk Questionnaire



Risk Questionnaire

Instructions: Prior to making an award, the Centers for Disease Control (CDC) evaluates the degree of risk posed by an applicant.

In filling out the Risk Questionnaire, each question should be answered as completely as possible, using extra pages if necessary. Please return your completed questionnaire to [Name of Contact].

General Information

Legal Name of Organization	County of San Bernardino, Department of Public Health
In which country (or countries) does your organization propose to operate for this NOFO? Please list all separated by commas.	United States of America
In which country is the headquarters or general office of your organization located?	United States of America
Please identify what type of organization you are (non-profit, for-profit, educational institution, other)?	Government agency
Is your organization incorporated or legally registered?	Yes If not, please explain:

Operational Risk

Personnel	Does your organization have a President/Director/Chief Executive Officer and Chief Financial Officer?	Yes If not, please explain:
	Does your organization have written human resource (HR) policies and procedures?	Yes, enclosed If not, please explain: http://countyline.sbcounty.gov/cao/policy/
	List the number of employees within your organization.	Full Time Employees: 752 Part-time Employees: 43 Volunteers:
Programmatic Performance	Has your organization managed U.S. Government grants or cooperative agreements within the last 36 months?	Received CDC grant within the last 3 years

Financial Risk

Accounting System	Does your organization have written accounting policies and procedures?	Yes, enclosed Explanation: http://countyline.sbcounty.gov/cao/policy/
	Can your accounting records separate the receipts and payments of a federal grant from the receipts and payments of your organization's other activities?	Yes
	Can your accounting records summarize expenditures from a federal grant according to different budget categories such as salaries, rent, supplies and equipment?	Yes
Internal Controls	Does your organization have systems, policies, and procedures for tracking and approving hours worked by employees, contractors, and volunteers?	Yes
	Does your organization have internal controls and anti-corruption ethics codes that are emphasized by leadership?	Yes
	Does your organization have written project management policies, procedures, and systems?	Yes If no, please provide an explanation:
	Is your organization familiar with U.S. government regulations concerning costs which can be charged to U.S. grants (Title 2, U.S. Code of Federal Regulations, Part 200, Subpart E)?	Yes
Cash Management	Does your organization have a bank account registered in its name and that is capable of segregating grant funds from other funds?	Yes If not, please explain how you plan to manage funds from a potential award?
Going Concern	What percent of your organization's capital is from federal funding? (percentage = total federal funding in previous FY/ organization's annual gross revenue in previous FY)	39%
	What is the dollar amount of your total current assets? (i.e. cash and other assets that are expected to be converted to cash within the next twelve months)	
	What is the dollar amount of your total current liabilities? (i.e. amounts due to be paid to creditors within the next twelve months)	
	What is the dollar amount of your total debt?	
	What is the dollar amount of your total assets? (e.g. cash, fixed assets, accounts receivable, etc.)	

Compliance Risk

Audit	Does your organization have regular independent audits that you contract and pay for?	Yes
	If yes, who performs the audit?	Eide Bailly, LLP for FY 2019
	What was the date of the most recent audit and what was the result?	Date: 12/20/2019 Opinion: "the County complied, in all material respects"



TOMAS J. ARAGON, M.D.,
DR.P.H.
Director & State Health Officer

State of California—Health and Human Services Agency
California Department of Public Health



GAVIN NEWSOM
Governor

January 29, 2021

Paul Chapman
Interim Chief Financial Officer
San Bernardino County
351 N. Mountain View Avenue
San Bernardino, CA, CA 92415-0010

Dear Paul Chapman:

Thank you for submitting your Indirect Cost Rate (ICR) documentation to the California Department of Public Health (CDPH). CDPH is using a standardized process that allows each Local Health Department (LHD) to use the negotiated ICR for all contracts, unless the ICR is otherwise designated by state or federal statutes, regulations, or specific grant guidelines, with CDPH.

For Fiscal Year 2021-2022, CDPH has accepted the documentation you have provided and, on a one-year basis, will approve your ICR proposal as follows:

18.682% calculated based on Salaries, Wages and Fringe Benefits

Please note, the rate you provided was approved up to the maximum allowed by CDPH policy (up to 25% for ICR calculated based on Salaries, Wages and Fringe Benefits and up to 15% for ICR calculated based on Allowable Total Direct Costs).

We look forward to working with you to document your approved ICR in CDPH contracts with a start date of July 1, 2021 or later.

If you have any questions, contact CDPH at CDPH-ICR-Mailbox@cdph.ca.gov.

Sincerely,

Eric Lau

Eric Lau, Accounting Section Chief
California Department of Public Health

Indirect Cost Rate Proposal
San Bernardino County
Department of Public Health
For Use in Fiscal Year 2021/22
(Using Audited Financials for FY 2018/2019)

Total Cost Components						
Allowable Direct Cost						
Description of Costs	Total Costs (Based on Actual Costs Incurred)	Total Unallowable Excludable Costs	Total Allowable Indirect Costs	Total Allowable Direct Costs	Direct Program Costs	All Other Direct Costs
a	b	c	d = (a-b-c)	e	f = (d-e)	
Salaries & Benefits:						
Salaries/Wages	45,969,447.13	625,085.39	3,832,164.53	41,512,197.21	41,512,197.21	-
Overtime/Comp. Time	236,391.33	-	-	236,391.33	236,391.33	-
Benefits	23,593,607.93	320,822.21	1,966,840.87	21,305,944.85	21,305,944.85	-
Total Salaries & Benefits	69,799,446.39	945,907.60	5,799,005.40	63,054,533.39	63,054,533.39	-
Services & Supplies:						
A Clothing & Personal Supplies	25,315.20	-	11.86	25,303.34	25,303.34	-
B Telecommunication Costs	861,772.26	-	57,708.02	804,064.24	804,064.24	-
C Insurance	1,420,260.97	-	1,202,378.00	217,882.97	217,882.97	-
D Medical, Dental & Lab Supplies	942,733.36	-	1,800.96	940,932.40	940,932.40	-
E Equipment Maintenance, Operations & Rep	261,484.05	-	23,773.33	237,710.72	237,710.72	-
F Office Expense	2,162,221.55	-	641,690.67	1,520,530.88	1,520,530.88	-
G Postage	272,598.16	-	1,972.73	270,625.43	270,625.43	-
H Printing & Courier	192,175.57	-	12,558.79	179,616.78	179,616.78	-
I Memberships	118,016.69	-	24,306.56	93,710.13	93,710.13	-
J Training	16,208.84	-	6,372.94	9,835.90	9,835.90	-
K Subscriptions, and Publications	4,351.27	-	412.78	3,938.49	3,938.49	-
L Public Relations/ Advertising	71,811.26	-	775.00	71,036.26	71,036.26	-
M Utilities	210,242.78	-	998.99	209,243.79	209,243.79	-
N Professional Services	19,736,250.65	146,237.26	704,473.22	18,885,540.17	18,885,540.17	-
O County Svcs (COWCAP)	-	-	-	-	-	-
P Information Technology	1,425,048.83	-	324,820.44	1,100,228.39	1,100,228.39	-
Q Rental Costs of Buildings and Equipment	4,413,698.54	49,224.00	23,741.51	4,340,733.03	4,340,733.03	-
R Facilities Maintenance, Operations & Rep	733,385.88	-	364,342.50	369,043.38	369,043.38	-
S Motor Pool	1,156,681.67	-	1,394.65	1,155,287.02	1,155,287.02	-
T Travel	533,201.08	-	58,238.68	474,962.40	474,962.40	-
U Audit	22,115.76	-	-	22,115.76	22,115.76	-
V County Counsel	145,973.40	-	15,386.25	130,587.15	130,587.15	-
W Other	9,702.25	-	1,705.34	7,996.91	7,996.91	-
X Human Resources	328,905.42	-	328,905.42	-	-	-
Z Reimbursements	-	-	-	-	-	-
Revenue	-	3,724.04	(3,724.04)	-	-	-
Total Services & Supplies	35,064,153.42	199,185.30	3,794,043.60	31,070,924.52	31,070,924.52	-
Capital Expenditures (Improvement)						
Capital Expenditures (Fixed Assets)	340,100.53	340,100.53	-	-	-	0
Total Budgetary Expenditures	105,203,700.34	1,485,183.43	9,593,049.00	94,125,457.91	94,125,457.91	-
Cost Plan Costs						
AA Space Use	314,615.00	-	314,615.00	-	-	-
AA Computer Software & Equip Use	360,546.00	33,679.00	348,867.00	-	-	-
M Utilities	436,237.00	-	436,237.00	-	-	-
EE Auditor-Controller	421,014.00	62,054.00	358,960.00	-	-	-
BB County Admin. Office	240,868.00	44,498.00	196,370.00	-	-	-
U County Counsel	21,628.00	(1,794.00)	23,422.00	-	-	-
R Facility Management Custodial	(2,197.00)	-	(2,197.00)	-	-	-
R Facility Management Grounds	(2,912.00)	-	(2,912.00)	-	-	-
R Facility Management Maintenance	9,899.00	43.00	9,856.00	-	-	-
W Human Resources	64,211.00	96,144.00	(31,933.00)	-	-	-
CC Purchasing	97,046.00	2,960.00	94,086.00	-	-	-
Q Real Estate Services	14,079.00	-	14,079.00	-	-	-
P IS Geographical Info System	57,905.00	10,023.00	47,882.00	-	-	-
DD Cost Estimation	-	-	-	-	-	-
DD Roll Forward	133,544.00	17,244.00	116,300.00	-	-	-
Total Cost Plan	2,186,483.00	264,851.00	1,921,632.00	-	-	-
Total Allowable Indirect Costs (AIC)						
Dist. Of AIC Based on Salary/Wages	-	-	11,514,681.00	-	-	-
Totals	107,390,183.34	1,750,044.43	-	94,125,457.91	94,125,457.91	-
INDIRECT COST RATE (AIC / Total Direct Salaries & Benefits):						
Admin/Department Overhead	9,593,049.00	15.214%	-	-	-	-
County Overhead	1,921,632.00	3.048%	-	-	23,593,607.93	-
Allowable Indirect Cost (AIC)	11,514,681.00	18.261%	-	-	45,969,447.13	51.32%
Total Direct Salaries & Benefits	63,054,533.39	-	-	-	69,563,055.06	-
INDIRECT COST RATE (AIC / Total Allowable Direct Costs)						
Admin/Department Overhead	9,593,049.00	10.192%	-	-	-	-
County Overhead	1,921,632.00	2.042%	-	-	-	-
Allowable Indirect Cost (AIC)	11,514,681.00	12.233%	-	-	-	-
Total Allowable Direct Costs	94,125,457.91	-	-	-	-	-



County of San Bernardino DELEGATED AUTHORITY – DOCUMENT REVIEW FORM

This form is for use by any department or other entity that has been authorized by Board of Supervisors/Directors action to execute grant applications, awards, amendments or other agreements on their behalf. All documents to be executed under such delegated authority must be routed for County Counsel and County Administrative Office review prior to signature by designee.

Note: This process should NOT be used to execute documents under a master agreement or template, or for construction contract change orders. Contact your County Counsel for instructions related to review of these documents.

Complete and submit this form, along with required documents proposed for signature, via email to the department's County Counsel representative and Finance Analyst. If the documents proposed for signature are within the delegated authority, the department will submit the requisite hard copies for signature to the County Counsel representative. Once County Counsel has signed, the department will submit the signed documents in hard copy, as well as by email, to CAO Special Projects Team for review. If approved, the department will be provided routing instructions as well as direction to submit one set of the executed documents to the Clerk of the Board within 30 days.

For detailed instructions on submission requirements, reference Section 7.3 of the Board Agenda Item Guidelines as the Delegation of Authority does not eliminate the document submission requirements.

Department/Agency/Entity: Public Health

Contact Name: Scott Rigsby Telephone: (909) 387 - 6408

Agreement No.: TBD Amendment No.: NA Date of Board Item 4/6/21 Board Item No.: 51

Name of Contract Entity/Project Name: National Initiative to Address COVID-19 Health Disparities

Explanation of request/Special Instructions:

Please see attached explanation of request (Attachment A).

Insert check mark that the following required documents are attached to this request:

- ☐ Documents proposed for signature (Note: For contracts, include a signed non-standard contract coversheet for contracts not submitted on a standard contract form).
- ☒ Board Agenda item that delegated the authority

Department Routed to County Counsel	County Counsel Name: Adam Ebright	Date Sent: 04/30/2021
Reviewing County Counsel Use Only	Review Date <u>04/30/2021</u>  Signature	Determination: <input checked="" type="checkbox"/> Within Scope of Delegated Authority <input type="checkbox"/> Outside Scope of Delegated Authority
CAO-Special Projects Use Only	Review Date <u>5/3/2021</u>  Signature	Disposition: <input checked="" type="checkbox"/> Route for signature to: <input type="checkbox"/> Chair <input checked="" type="checkbox"/> CEO <input checked="" type="checkbox"/> Department <input type="checkbox"/> Return to Department for preparation of agenda item

* Department to electronically approve application