

**PROPOSED BOUNDARIES OF ANNEXATION NO. 15  
COMMUNITY FACILITIES DISTRICT 2010-1 (EAST VALLEY)  
COUNTY OF SAN BERNARDINO, STATE OF CALIFORNIA**

EXEMPT RECORDING REQUESTED,  
PER CA GOVERNMENT CODE  
§§6103

FILED IN THE OFFICE OF THE CLERK OF THE BOARD OF SUPERVISORS OF SAN BERNARDINO COUNTY THIS \_\_\_\_\_ DAY OF \_\_\_\_\_, 20\_\_\_\_.

PREPARED BY:



**SURVEYOR:**

PREPARED UNDER THE DIRECTION OF:

I HEREBY CERTIFY THAT THE WITHIN MAP SHOWING THE PROPOSED BOUNDARIES OF ANNEXATION NO. 15 OF COUNTY OF SAN BERNARDINO COMMUNITY FACILITIES DISTRICT NO. 2010-1 (EAST VALLEY), SAN BERNARDINO COUNTY, STATE OF CALIFORNIA, WAS APPROVED BY THE BOARD OF SUPERVISORS OF SAN BERNARDINO COUNTY AT A REGULAR MEETING THEREOF, HELD ON THE \_\_\_\_\_ DAY OF \_\_\_\_\_, 20\_\_\_\_, BY ITS RESOLUTION NO. \_\_\_\_\_.

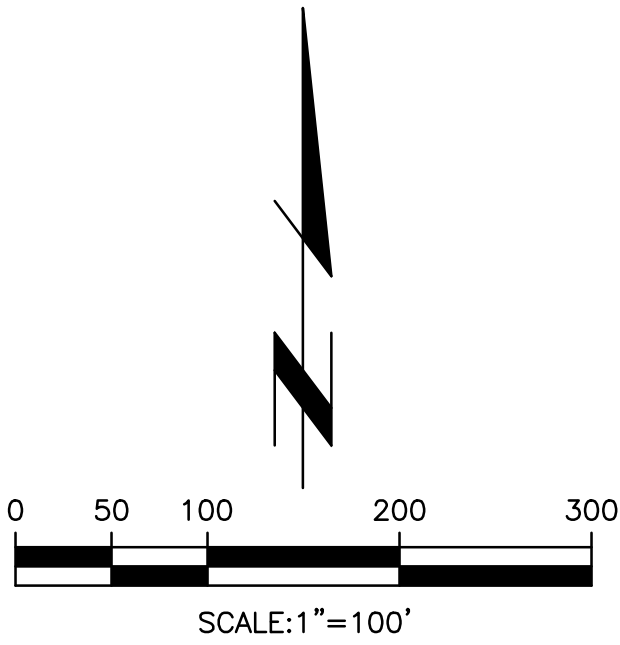
LYNNA MONELL, CLERK OF THE BOARD  
SAN BERNARDINO COUNTY

LYNNA MONELL, CLERK OF THE BOARD  
SAN BERNARDINO COUNTY



BRIAN L. THIENES  
P.L.S. NO. 5750  
EXP. 12/31/25

DATE



**LEGAL DESCRIPTION:**

LAND DESCRIBED IN NOTICE OF MERGER PMRG-2022-00035 RECORDED JULY 14, 2022 AS DOCUMENT NO. 2022-0246040, OF OFFICIAL RECORDS IN THE OFFICE OF THE RECORDER OF COUNTY OF SAN BERNARDINO, DESCRIBED AS FOLLOWS:

BEGINNING AT THE NORTHWESTERLY CORNER OF PARCEL 1 OF SAID MERGER;

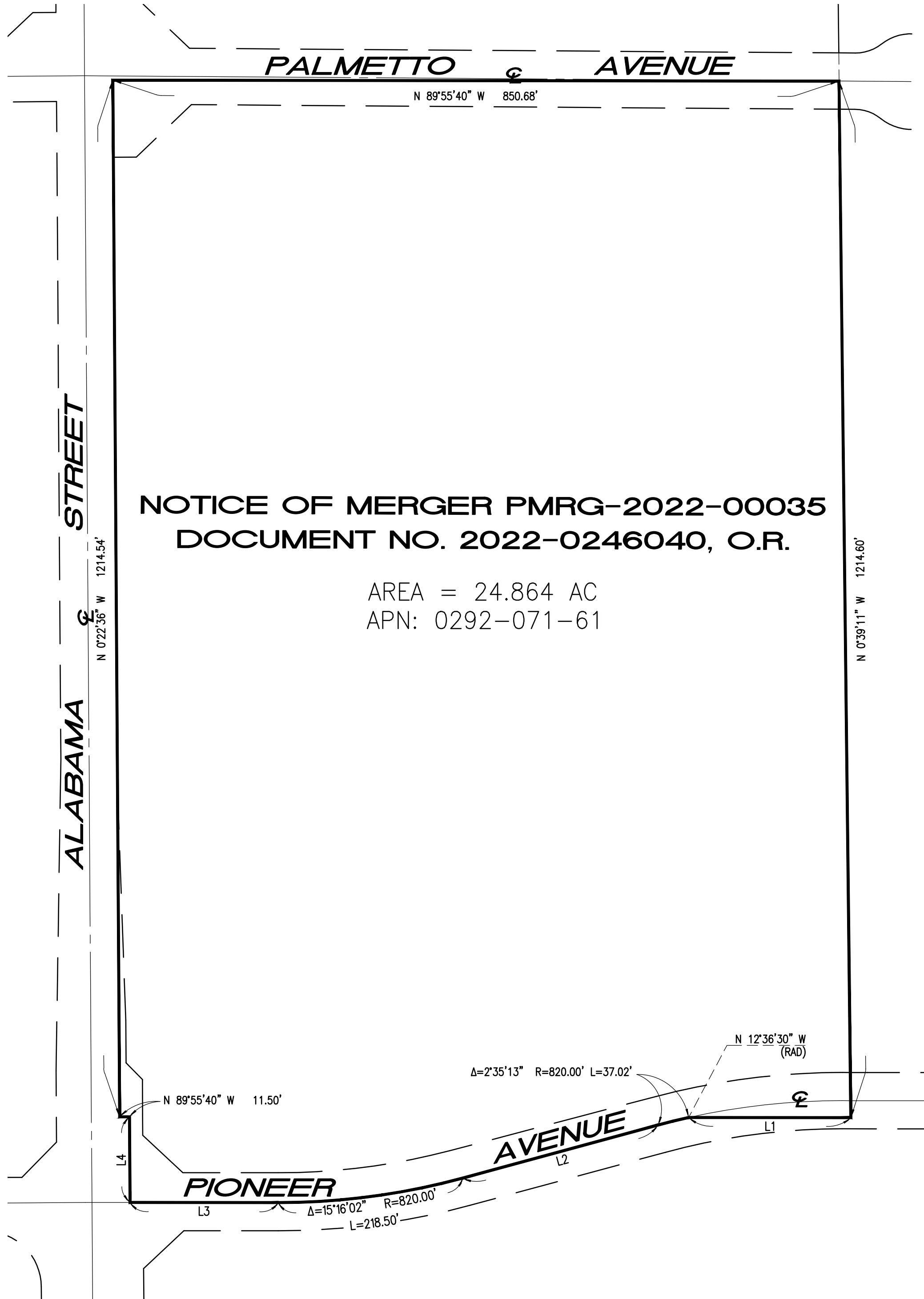
THENCE ALONG THE BOUNDARY OF SAID PARCEL 1, THE FOLLOWING TEN (10) COURSES:

- 1) SOUTH 89°55'40" EAST 850.68 FEET;
- 2) SOUTH 00°39'11" EAST 1,214.60 FEET;
- 3) NORTH 89°55'40" WEST 190.08 FEET TO THE BEGINNING OF A NON-TANGENT CURVE, CONCAVE SOUTHERLY AND HAVING A RADIUS OF 820.00 FEET, A RADIAL TO WHICH BEARS NORTH 12°36'30" WEST;
- 4) WESTERLY ALONG SAID NON-TANGENT CURVE, THROUGH A CENTRAL ANGLE OF 02°35'13", AN ARC LENGTH OF 37.02 FEET;
- 5) SOUTH 74°48'18" WEST 237.09 FEET TO THE BEGINNING OF A TANGENT CURVE, CONCAVE NORTHERLY AND HAVING A RADIUS OF 820.00 FEET;
- 6) WESTERLY ALONG SAID TANGENT CURVE, THROUGH A CENTRAL ANGLE OF 15°16'02", AN ARC LENGTH OF 218.50 FEET;
- 7) NORTH 89°55'40" WEST 173.61 FEET;
- 8) NORTH 00°22'36" WEST 100.31 FEET;
- 9) NORTH 89°55'40" WEST 11.50 FEET;
- 10) NORTH 00°22'36" WEST 1,214.54 FEET TO THE POINT OF BEGINNING.

ASSESSOR'S PARCEL NUMBER WITHIN THE BOUNDARIES OF ANNEXATION NO. 15, CFD 2010-1:

0292-071-61

REFERENCE IS MADE TO THE ASSESSOR MAPS OF SAN BERNARDINO COUNTY FOR A DESCRIPTION OF THE LINES AND DIMENSIONS OF THE LOT AND PARCEL, AND THE MAP OF THE BOUNDARIES OF SAN BERNARDINO COUNTY COMMUNITY FACILITIES DISTRICT NO. 2010-1 (EAST VALLEY) RECORDED ON JUNE 14, 2010, IN BOOK NO. 84 OF MAPS OF ASSESSMENT AND COMMUNITY FACILITIES DISTRICT AT PAGES 78-89, ON MARCH 29, 2012, IN BOOK NO. 85 OF MAPS OF ASSESSMENT AND COMMUNITY FACILITIES DISTRICT AT PAGE 29 AND ON APRIL 1, 2013, IN BOOK NO. 85 OF MAPS OF ASSESSMENT AND COMMUNITY FACILITIES DISTRICT AT PAGE 62 AND ON APRIL 5, 2013, IN BOOK NO. 85 OF MAPS OF ASSESSMENT AND COMMUNITY FACILITIES DISTRICT AT PAGE 64 AND ON APRIL 17, 2014 IN BOOK 86 OF MAPS OF ASSESSMENT AND COMMUNITY FACILITIES DISTRICT AT PAGE 15 AND ON JUNE 6, 2014, IN BOOK NO. 86 OF MAPS OF ASSESSMENT AND COMMUNITY FACILITIES DISTRICT AT PAGE 24 AND ON SEPTEMBER 16, 2014, IN BOOK NO. 86 OF MAPS OF ASSESSMENT AND COMMUNITY FACILITIES DISTRICT AT PAGE 29 AND ON MARCH 9, 2015, IN BOOK 86 OF MAPS OF ASSESSMENT AND COMMUNITY FACILITIES DISTRICT AT PAGE 47 AND ON APRIL 15, 2015, IN BOOK 86 OF MAPS OF ASSESSMENT AND COMMUNITY FACILITIES DISTRICT AT PAGE 49 AND ON AUGUST 4, 2015, IN BOOK 86 OF MAPS OF ASSESSMENT AND COMMUNITY FACILITIES DISTRICT AT PAGE 89 AND ON JANUARY 17, 2017, IN BOOK 87 OF MAPS OF ASSESSMENT AND COMMUNITY FACILITIES DISTRICT AT PAGE 36 AND ON MAY 30, 2017, IN BOOK 87 OF MAPS OF ASSESSMENT AND COMMUNITY FACILITIES DISTRICT AT PAGE 52 AND ON OCTOBER 10, 2017, IN BOOK 87 OF MAPS OF ASSESSMENT AND COMMUNITY FACILITIES DISTRICT AT PAGE 65 AND ON NOVEMBER 13, 2019, IN BOOK 89 OF MAPS OF ASSESSMENT AND COMMUNITY FACILITIES DISTRICT AT PAGE 7 AND ON DECEMBER 22, 2020, IN BOOK 89 OF MAPS OF ASSESSMENT AND COMMUNITY FACILITIES DISTRICT AT PAGE 45 IN THE OFFICIAL RECORDS OF SAN BERNARDINO COUNTY RECORDER, STATE OF CALIFORNIA.



**NOTICE OF MERGER PMRG-2022-00035  
DOCUMENT NO. 2022-0246040, O.R.**

AREA = 24.864 AC  
APN: 0292-071-61

LINE TABLE		
LINE #	BEARING	LENGTH
L1	S 89°55'40" E	190.08'
L2	N 74°48'18" E	237.09'
L3	N 89°55'40" W	173.61'
L4	N 0°22'36" W	100.31'

San Bernardino County Recorder's Certificate

This map has been filed under the Document Number \_\_\_\_\_ this \_\_\_\_\_ day of \_\_\_\_\_, 20\_\_\_\_, at \_\_\_\_\_, in Book \_\_\_\_\_ of Maps of Assessment and Community Facilities Districts at Page(s) \_\_\_\_\_, at the Request of San Bernardino County Community Facilities District 2010-1 in the amount of \$ \_\_\_\_\_.

CHRIS WILHITE  
Assessor-Recorder  
San Bernardino County

by: \_\_\_\_\_  
Deputy Recorder