



### **303 West 5th Street Acquisition**

303 West 5th Street

San Bernardino, San Bernardino County, California 92401

Inquiry Number: 7408452.4

August 04, 2023

## **EDR Historical Topo Map Report** **with QuadMatch™**



6 Armstrong Road, 4th floor  
Shelton, CT 06484  
Toll Free: 800.352.0050  
[www.edrnet.com](http://www.edrnet.com)

# EDR Historical Topo Map Report

08/04/23

**Site Name:**

303 West 5th Street Acquisition  
303 West 5th Street  
San Bernardino, CA 92401  
EDR Inquiry # 7408452.4

**Client Name:**

Terracon  
23041 Avenida De La Carlota Ste 350  
Laguna Hills, CA 92653  
Contact: Laura Hedman



EDR Topographic Map Library has been searched by EDR and maps covering the target property location as provided by Terracon were identified for the years listed below. EDR's Historical Topo Map Report is designed to assist professionals in evaluating potential liability on a target property resulting from past activities. EDR's Historical Topo Map Report includes a search of a collection of public and private color historical topographic maps, dating back to the late 1800s.

**Search Results:****Coordinates:**

<b>P.O.#</b>	NA	<b>Latitude:</b>	34.108006 34° 6' 29" North
<b>Project:</b>	LA237387	<b>Longitude:</b>	-117.290293 -117° 17' 25" West
		<b>UTM Zone:</b>	Zone 11 North
		<b>UTM X Meters:</b>	473226.00
		<b>UTM Y Meters:</b>	3774169.61
		<b>Elevation:</b>	1051.00' above sea level

**Maps Provided:**

2018	1943
2015	1942
2012	1936, 1938
1980	1901
1975	1898
1973	1896
1967	
1954	

**Disclaimer - Copyright and Trademark Notice**

This Report contains certain information obtained from a variety of public and other sources reasonably available to Environmental Data Resources, LLC. It cannot be concluded from this Report that coverage information for the target and surrounding properties does not exist from other sources. This Report is provided on an "AS IS", "AS AVAILABLE" basis. NO WARRANTY EXPRESS OR IMPLIED IS MADE WHATSOEVER IN CONNECTION WITH THIS REPORT.

ENVIRONMENTAL DATA RESOURCES, LLC AND ITS SUBSIDIARIES, AFFILIATES AND THIRD PARTY SUPPLIERS DISCLAIM ALL WARRANTIES, OF ANY KIND OR NATURE, EXPRESS OR IMPLIED, ARISING OUT OF OR RELATED TO THIS REPORT OR ANY OF THE DATA AND INFORMATION PROVIDED IN THIS REPORT, INCLUDING WITHOUT LIMITATION, ANY WARRANTIES REGARDING ACCURACY, QUALITY, CORRECTNESS, COMPLETENESS, COMPREHENSIVENESS, SUITABILITY, MERCHANTABILITY, FITNESS FOR A PARTICULAR PURPOSE, TITLE, NON-INFRINGEMENT, MISAPPROPRIATION, OR OTHERWISE. ALL RISK IS ASSUMED BY THE USER. IN NO EVENT SHALL ENVIRONMENTAL DATA RESOURCES, LLC OR ITS SUBSIDIARIES, AFFILIATES OR THIRD PARTY SUPPLIERS BE LIABLE TO ANYONE FOR ANY DIRECT, INCIDENTAL, INDIRECT, SPECIAL, CONSEQUENTIAL OR OTHER DAMAGES OF ANY TYPE OR KIND (INCLUDING BUT NOT LIMITED TO LOSS OF PROFITS, LOSS OF USE, OR LOSS OF DATA), ARISING OUT OF OR IN ANY WAY CONNECTED WITH THIS REPORT OR ANY OF THE DATA AND INFORMATION PROVIDED IN THIS REPORT.

Any analyses, estimates, ratings, environmental risk levels, or risk codes provided in this Report are provided for illustrative purposes only, and are not intended to provide, nor should they be interpreted as providing any facts regarding, or prediction or forecast of, any environmental risk for any property. Only an assessment performed by a qualified environmental professional can provide findings, opinions or conclusions regarding the environmental risk or conditions in, on or at any property.

Copyright 2023 by Environmental Data Resources, Inc. All rights reserved. Reproduction in any media or format, in whole or in part, of any report or map of Environmental Data Resources, Inc., or its affiliates, is prohibited without prior written permission.

EDR and its logos (including Sanborn and Sanborn Map) are trademarks of Environmental Data Resources, LLC or its affiliates. All other trademarks used herein are the property of their respective owners.

## Topo Sheet Key

This EDR Topo Map Report is based upon the following USGS topographic map sheets.

### 2018 Source Sheets



San Bernardino South  
2018  
7.5-minute, 24000



San Bernardino North  
2018  
7.5-minute, 24000

### 2015 Source Sheets



San Bernardino South  
2015  
7.5-minute, 24000



San Bernardino North  
2015  
7.5-minute, 24000

### 2012 Source Sheets

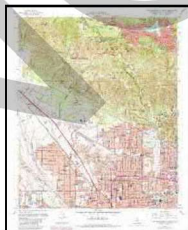


San Bernardino South  
2012  
7.5-minute, 24000



San Bernardino North  
2012  
7.5-minute, 24000

### 1980 Source Sheets



San Bernardino North  
1980  
7.5-minute, 24000  
Aerial Photo Revised 1978



San Bernardino South  
1980  
7.5-minute, 24000  
Aerial Photo Revised 1979



## Topo Sheet Key

This EDR Topo Map Report is based upon the following USGS topographic map sheets.

### 1975 Source Sheets



San Bernardino South  
1975  
7.5-minute, 24000  
Aerial Photo Revised 1975



San Bernardino North  
1975  
7.5-minute, 24000  
Aerial Photo Revised 1975

### 1973 Source Sheets

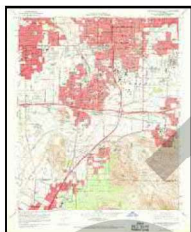


San Bernardino North  
1973  
7.5-minute, 24000  
Aerial Photo Revised 1966



San Bernardino South  
1973  
7.5-minute, 24000  
Aerial Photo Revised 1973

### 1967 Source Sheets



San Bernardino South  
1967  
7.5-minute, 24000  
Aerial Photo Revised 1966



San Bernardino North  
1967  
7.5-minute, 24000  
Aerial Photo Revised 1966

### 1954 Source Sheets



San Bernardino South  
1954  
7.5-minute, 24000  
Aerial Photo Revised 1952



San Bernardino North  
1954  
7.5-minute, 24000  
Aerial Photo Revised 1952

## **Topo Sheet Key**

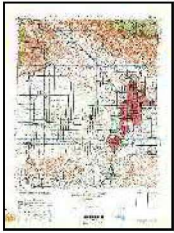
This EDR Topo Map Report is based upon the following USGS topographic map sheets.

### **1943 Source Sheets**



Colton  
1943  
7.5-minute, 31680

### **1942 Source Sheets**

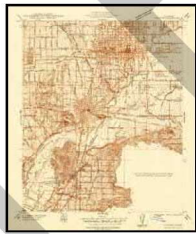


SAN BERNARDINO  
1942  
15-minute, 50000

### **1936, 1938 Source Sheets**

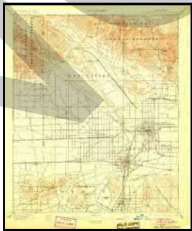


Arrowhead  
1936  
7.5-minute, 31680



Colton  
1938  
7.5-minute, 31680

### **1901 Source Sheets**



San Bernardino  
1901  
15-minute, 62500

### ***Topo Sheet Key***

This EDR Topo Map Report is based upon the following USGS topographic map sheets.

#### **1898 Source Sheets**



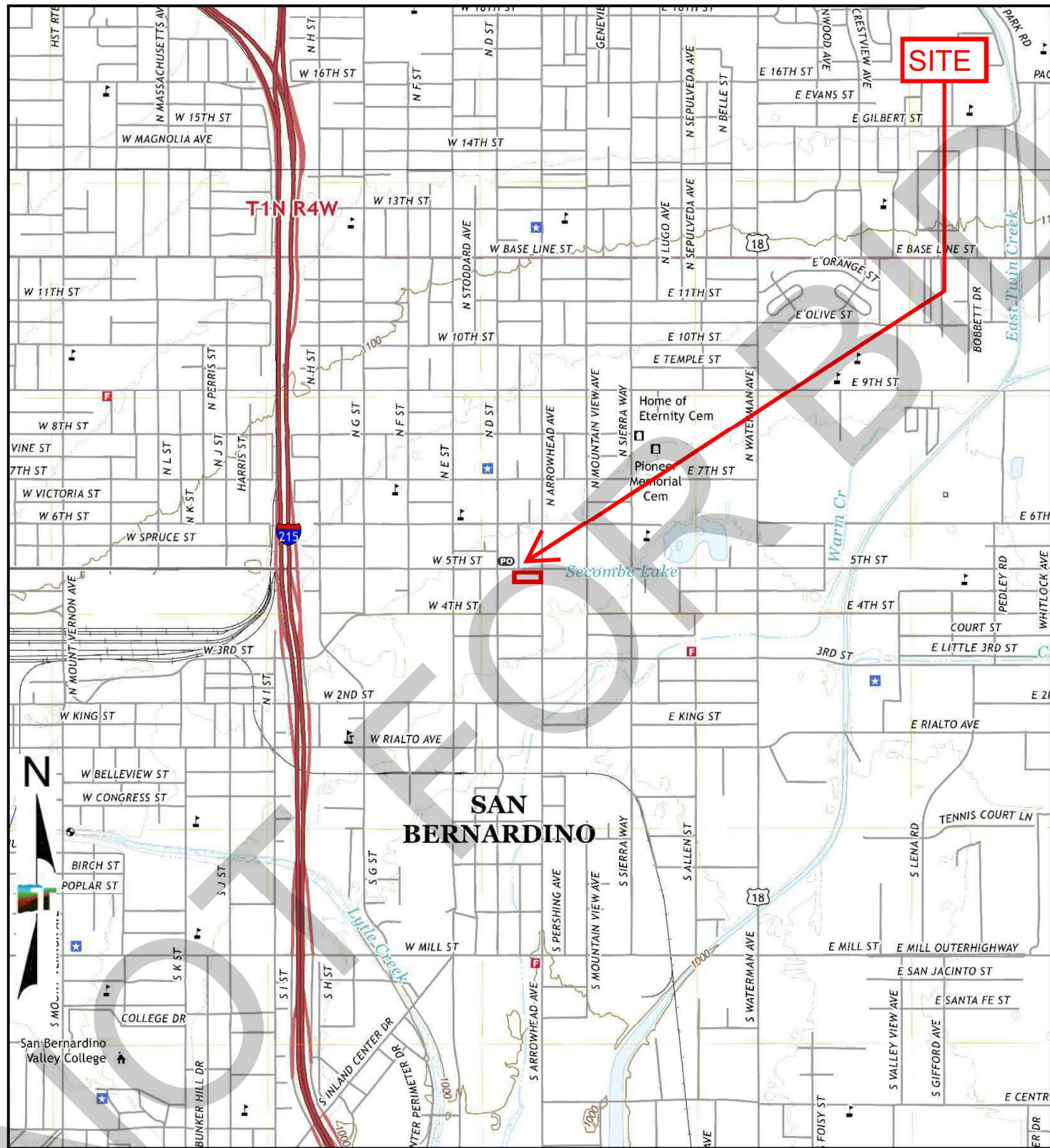
San Bernardino  
1898  
15-minute, 62500

#### **1896 Source Sheets**

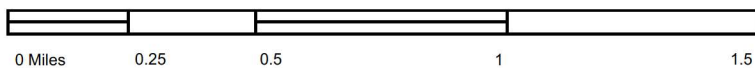


San Bernardino  
1896  
15-minute, 62500





TP, San Bernardino South, 2018, 7.5-minute  
N, San Bernardino North, 2018, 7.5-minute



Project Manager:	LSH	Project No.	LA237387
Drawn by:	LSH	Scale:	As Shown
Checked by:	CAP	File Name:	N/A
Approved by:	CAP	Date:	2018



1355 East Cooley Drive  
Colton, California 92324

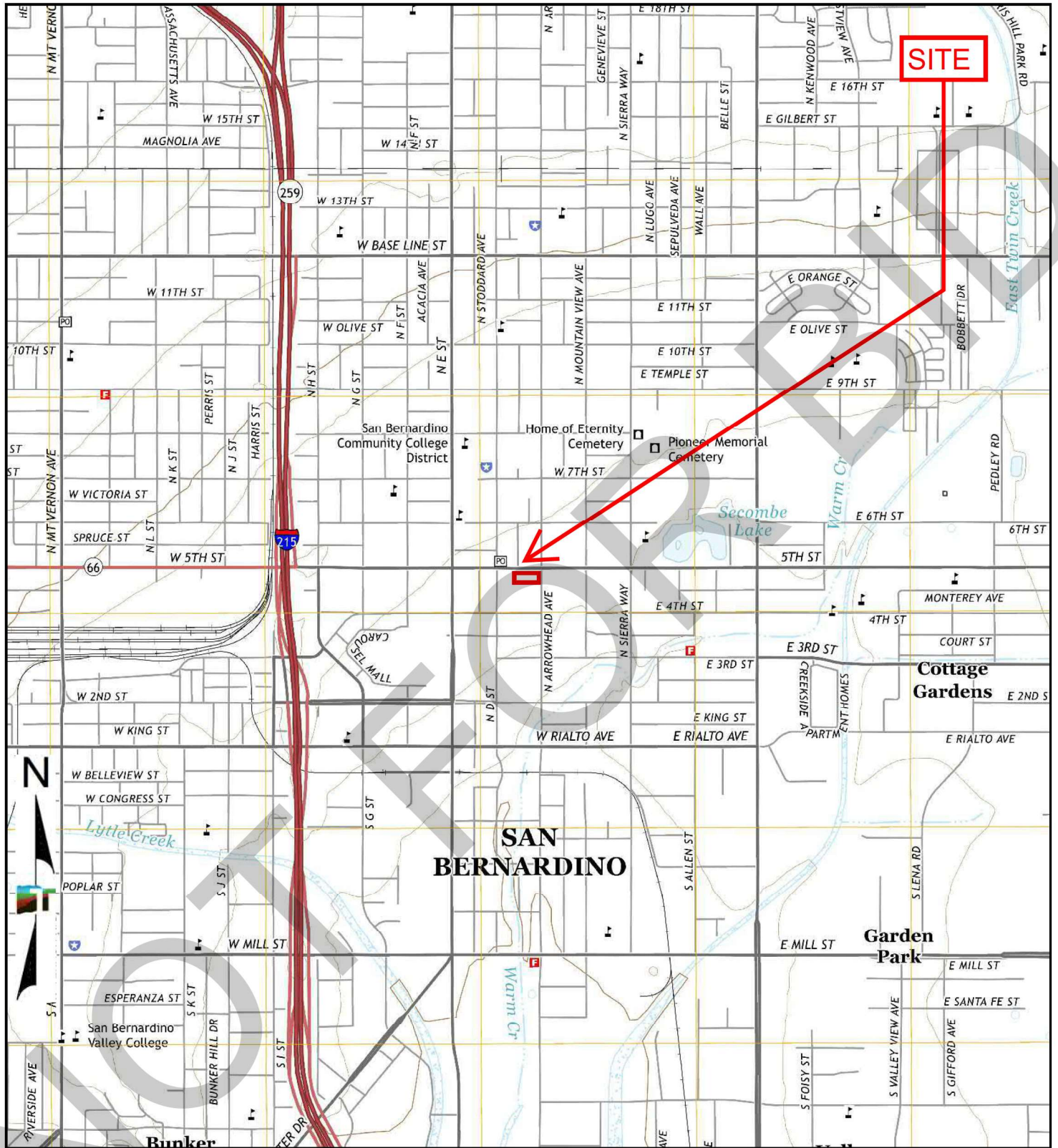
## 2018 TOPOGRAPHIC MAP

303 West 5th Street Acquisition  
303 West 5th Street  
San Bernardino, San Bernardino County, California 92401

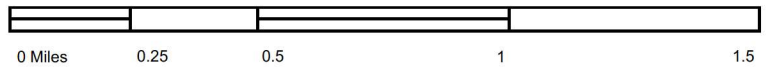
Appendix

C





TP, San Bernardino South, 2015, 7.5-minute  
N, San Bernardino North, 2015, 7.5-minute



Project Manager:	Project No.
LSH	LA237387
Drawn by:	Scale:
LSH	As Shown
Checked by:	File Name:
CAP	N/A
Approved by:	Date:
CAP	2015



1355 East Cooley Drive  
Colton, California 92324

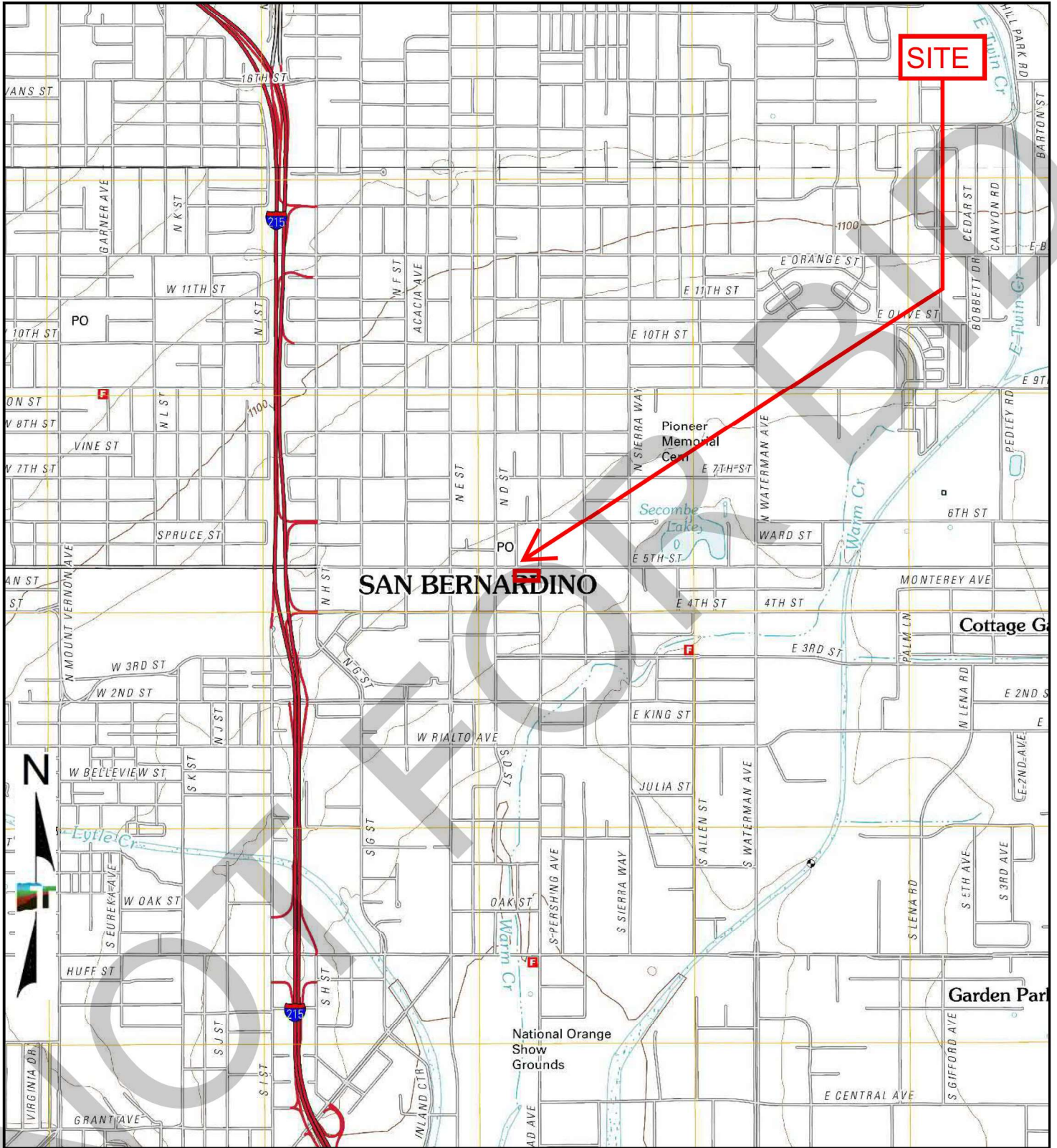
## 2015 TOPOGRAPHIC MAP

303 West 5th Street Acquisition  
303 West 5th Street  
San Bernardino, San Bernardino County, California 92401

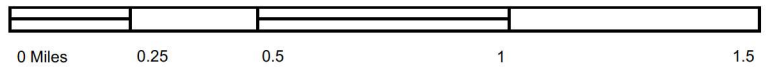
Appendix

C





TP, San Bernardino South, 2012, 7.5-minute  
N, San Bernardino North, 2012, 7.5-minute

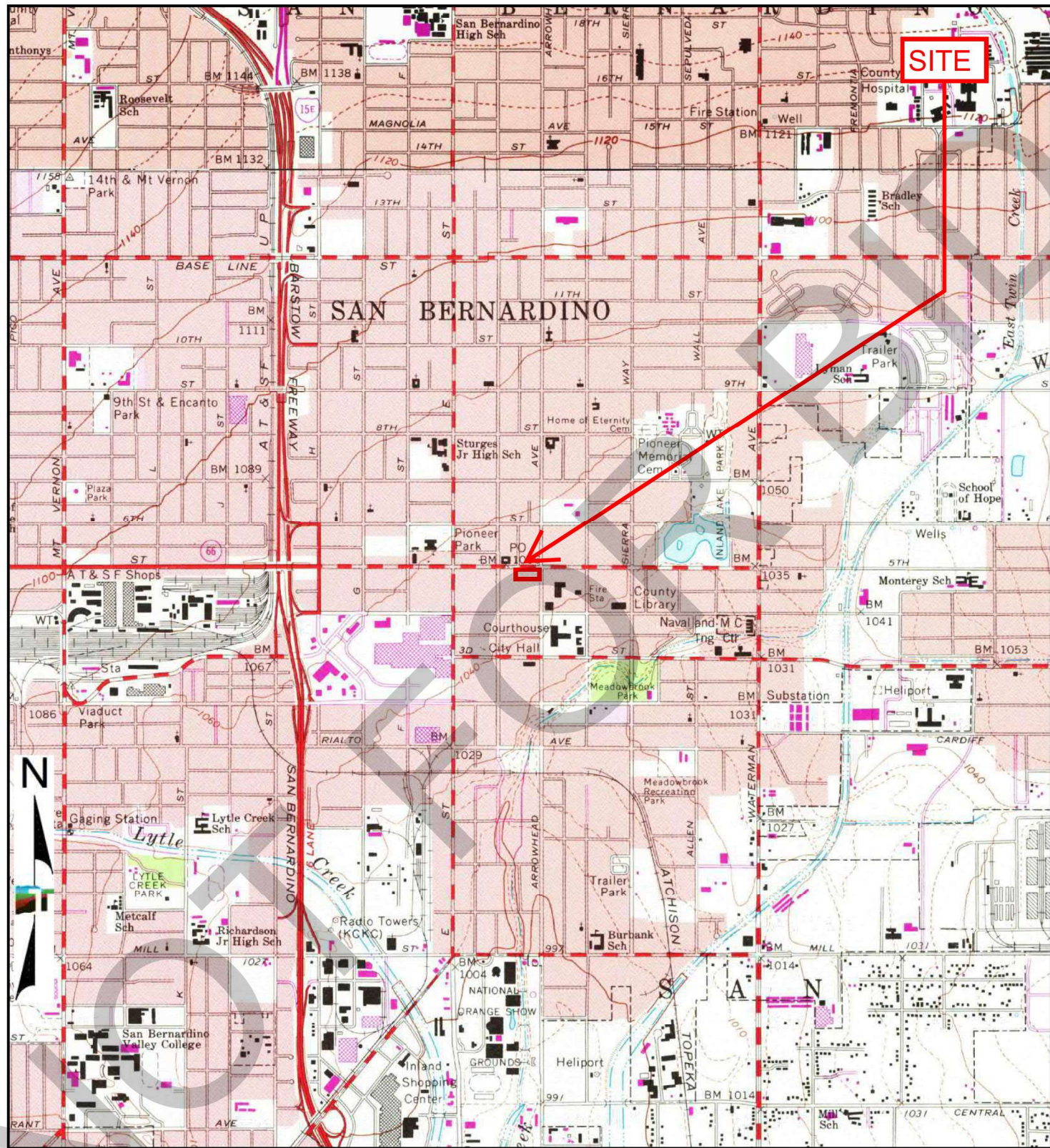


Project Manager:	LSH
Project No.	LA237387
Drawn by:	LSH
Scale:	As Shown
Checked by:	CAP
File Name:	N/A
Approved by:	CAP
Date:	2012

1355 East Cooley Drive  
Colton, California 92324

2012 TOPOGRAPHIC MAP		Appendix
303 West 5th Street Acquisition 303 West 5th Street San Bernardino, San Bernardino County, California 92401		C





TP, San Bernardino South, 1980, 7.5-minute  
N, San Bernardino North, 1980, 7.5-minute



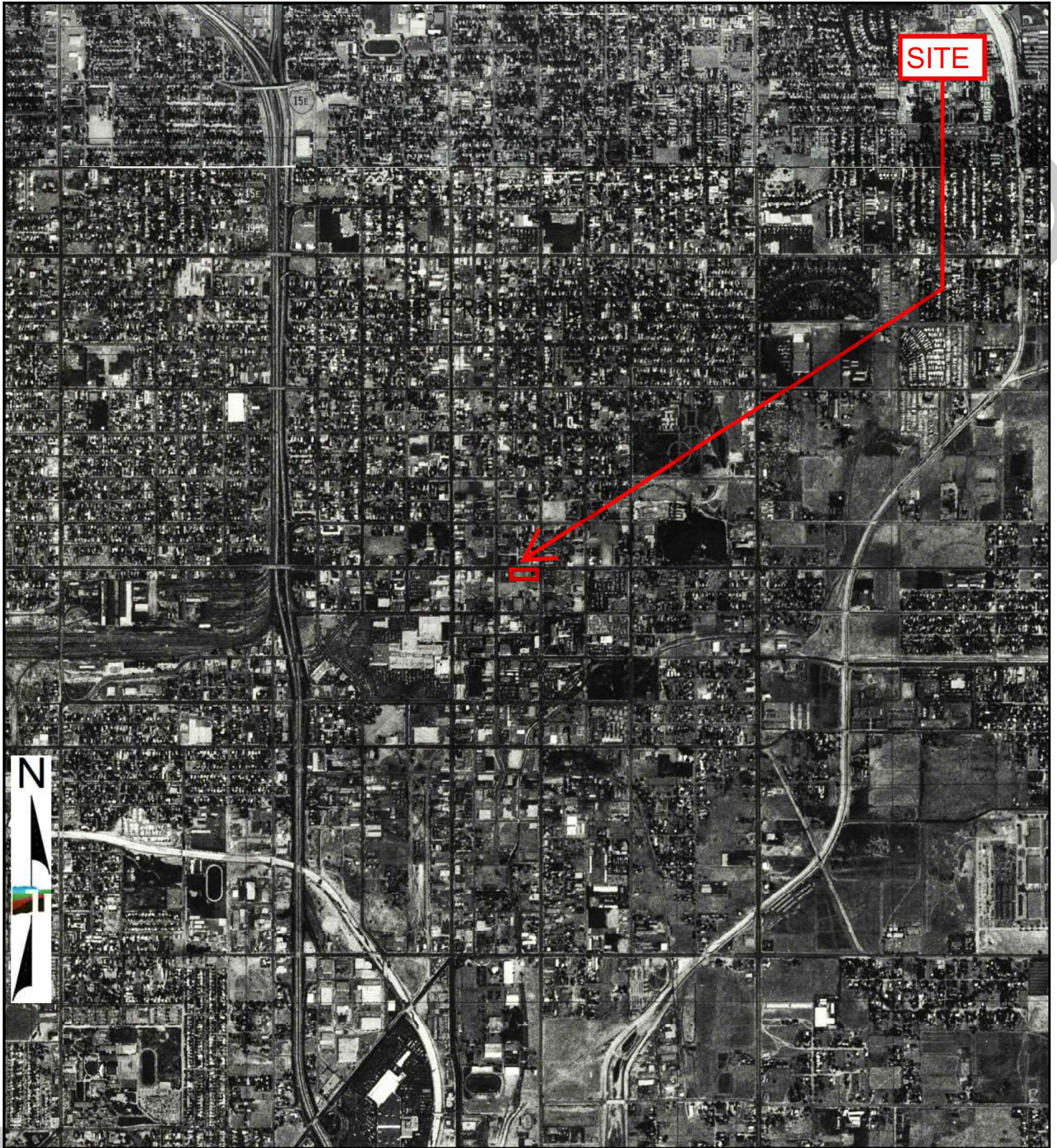
Project Manager:	Project No.
LSH	LA237387
Drawn by:	Scale:
LSH	As Shown
Checked by:	File Name:
CAP	N/A
Approved by:	Date:
CAP	1980

**Terracon**

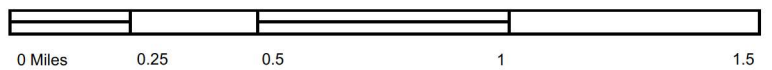
1355 East Cooley Drive  
Colton, California 92324

1980 TOPOGRAPHIC MAP	Appendix
303 West 5th Street Acquisition 303 West 5th Street San Bernardino, San Bernardino County, California 92401	C





TP, San Bernardino South, 1975, 7.5-minute  
N, San Bernardino North, 1975, 7.5-minute



Project Manager:	LSH	Project No.	LA237387
Drawn by:	LSH	Scale:	As Shown
Checked by:	CAP	File Name:	N/A
Approved by:	CAP	Date:	1975



1355 East Cooley Drive  
Colton, California 92324

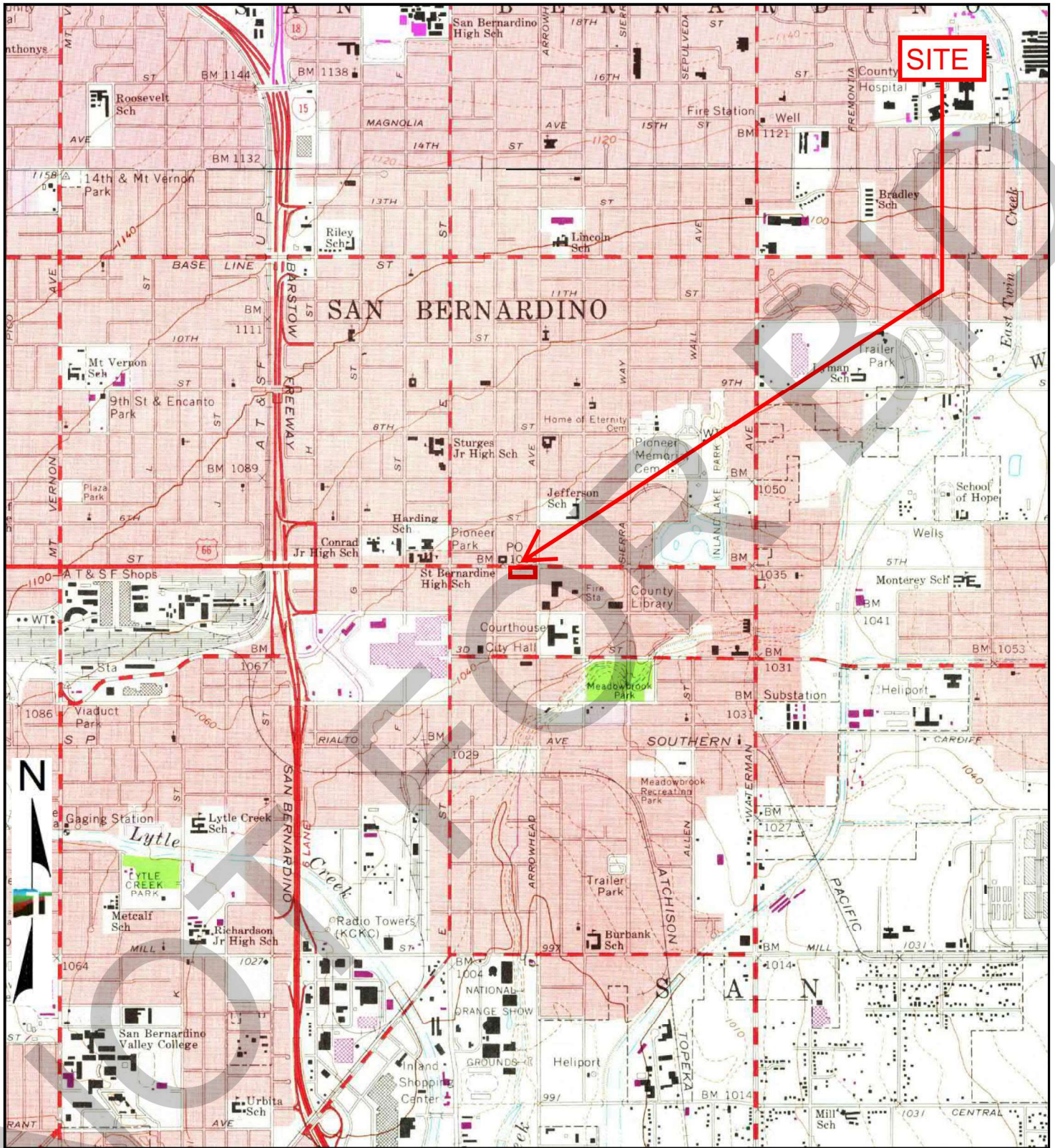
## 1975 TOPOGRAPHIC MAP

303 West 5th Street Acquisition  
303 West 5th Street  
San Bernardino, San Bernardino County, California 92401

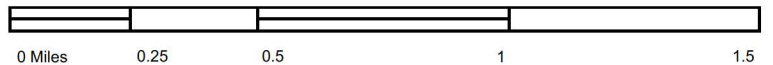
Appendix

C





TP, San Bernardino South, 1973, 7.5-minute  
N, San Bernardino North, 1973, 7.5-minute



Project Manager:	LSH
Project No.	LA237387
Drawn by:	LSH
Scale:	As Shown
Checked by:	CAP
File Name:	N/A
Approved by:	CAP
Date:	1973

1355 East Cooley Drive  
Colton, California 92324

1973 TOPOGRAPHIC MAP	Appendix
303 West 5th Street Acquisition 303 West 5th Street San Bernardino, San Bernardino County, California 92401	C