



# 2025-26 Recommended Fee Workshop

**Matthew Erickson,  
County Chief Financial Officer**

**Paloma Hernandez-Barker,  
Deputy Executive Officer**

**March 11, 2025**

# Overview of the Fee Program

- Fees are reviewed annually to maintain the goal of capturing the full cost of services per County Budgeting Policy 05-01.
- For 2025-26, County departments were asked to:
  - ✓ Review all fees that were last reviewed in the 2021-22 fee cycle or earlier.
  - ✓ Review fees that have high volume and/or are the most impactful to ensure annual costs are being recovered.
  - ✓ Conduct comparisons to other jurisdictions, as applicable.



# 2025-26 Recommended Fee Program Highlights



Estimated Fee Revenue for 2025-26



Fee Revenue is approximately 3% of the County's budget

Net increase of 48 fees



95 New Fees

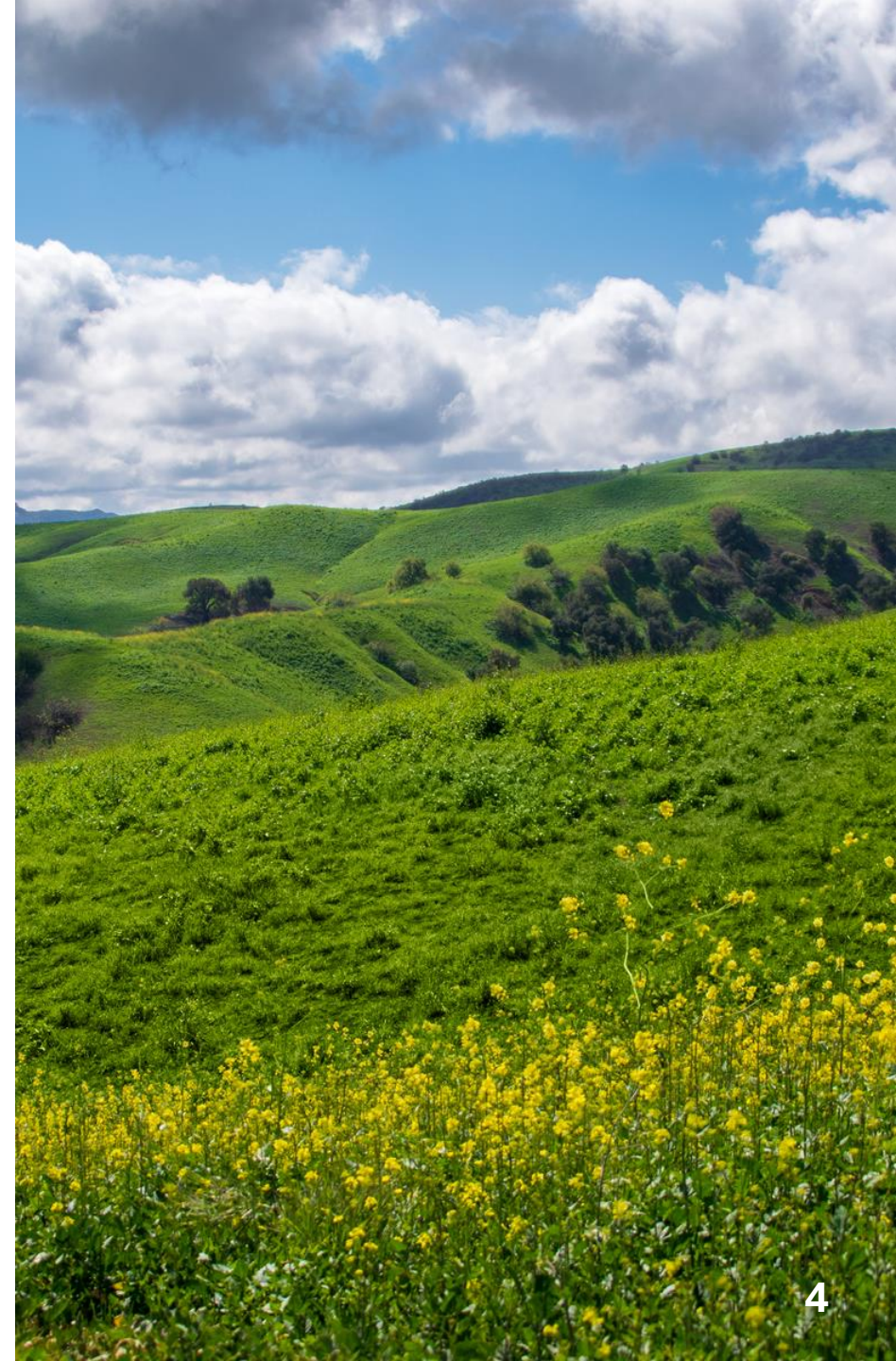


47 Deletions

# Overview: Fee Approval Process

---

- 1. Departmental Analysis** – Departments review services provided and propose revisions to ensure full cost recovery.
- 2. Fee Workshop: March 11 (Today)** – A presentation of countywide recommended fee changes. This action is part of the review process from the Board offices.
- 3. Fee Hearing: (March 25)** – An introduction of the proposed ordinances for consideration of the adoption of fee changes.
- 4. Fee Adoption (April 8)** – This action adopts the fee changes which amend countywide fee ordinances with changes effective on July 1, 2025, except for Regional Parks, which would become effective on May 10, 2025.



# Notable Changes to 2025-26 Recommended Fees

## Regional Parks

New fees based on a market study analysis:

- Fishing fees of \$5 for children (Ages 4-14) which separates the child fee from the adult fee, Holiday fishing fees of \$20, and 12 Fishing passes for a fee of \$125, excluding holidays and special events.
- Summer passes for \$40-\$60 valid from May through September.
- Family pass for swimming of \$55.
- Holiday park entrance fees of \$20.



# Notable Changes to 2025-26 Recommended Fees, (Cont'd)

## Regional Parks (Cont'd)

Revised fees for a competitive fee structure, which include the following increases:

- Weekday and weekend entrance fees by \$2 (from \$8 to \$10) and \$5 (from \$10 to \$15), respectively.
- Annual vehicle entrance pass single park only fees by \$20 (from \$60 to \$80).
- Adult fishing fees by \$5 (from \$10 to \$15).
- Swim Admission Daily fees by \$3 (from \$12 to \$15) and Swim Admission Daily (Holiday) fees by \$3 (from \$17 to \$20).



# Notable Changes to 2025-26 Recommended Fees, (Cont'd)

## Project and Facilities Management

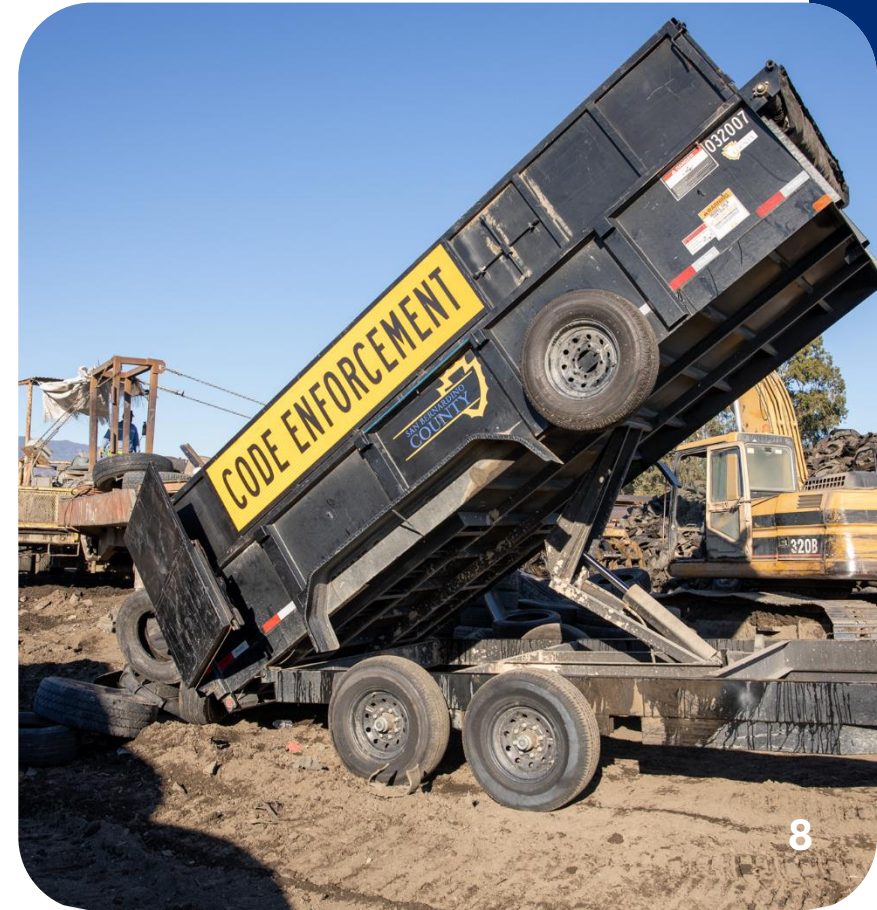
- Increase to Electric Vehicle (EV) charging station user fee from \$0.35/kWh to \$0.37/kWh due to anticipated increases in electric utility charges.
  - Note: Effective 2024-25, language authorizing the Director of Project and Facilities Management, in consultation with the Chief Executive Officer, was added to adjust the EV charge station user fee, but increase shall not exceed 25%, based on actual cost.



# Notable Changes to 2025-26 Recommended Fees, (Cont'd)

## Land Use Services

- Cap incremental increases for Land Development, Code Enforcement, and Planning fees at 8%.
- New fees include additional hourly rates in the Schedule of Charges, preliminary grading review (\$608), an intake processing fee (\$61), Code Enforcement fees related to short-term rentals for modifications to permits outside of renewal (\$60) and for the processing of appeals (\$100), and a fee for Elevation Certificate review (\$788).





# Notable Changes to 2025-26 Recommended Fees, (Cont'd)

## Public Health

- Revisions to fees:
  - Federally Qualified Health Center medical office visits from \$10 to \$25 to align with surrounding counties, and for consistency with recommendations from the San Bernardino County Community Health Center.
  - Food worker certificate decrease from \$24 to \$22 to reflect improvements and efficiencies.
- Two new food recovery fees to comply with Chapter 395, Statutes of 2016 (Senate Bill 1383 - Food Recovery and Organic Waste Diversion).
  - To permit commercial edible food generators for \$278.
  - To permit food recovery organizations for \$235.



# Notable Changes to 2025-26 Recommended Fees – Other Agencies

## County Fire

- Addition of two permit fees for the Hazardous Substance Underground Storage Tank program for Construction Extension (3 months) for \$280, and Tank Closure in Place fee for \$1,290.
- Revisions to 243 Community Safety fees ranging between 0.8 – 8.3%, to reflect negotiated MOU increases, and other factors such as changes in regulatory oversight and reporting requirements as required by the State, and to 65 Hazardous Materials fees ranging between 1.0 – 8.0%.
- Deletion of the Subsequent Returned Check fee and Administrative Overhead fee, as they are not utilized by the District.



# Notable Changes to 2025-26 Recommended Fees – Other Agencies, (Cont'd)

## Special Districts

- Big Bear Alpine Zoo
  - New fee for the rental of the Big Bear Alpine Zoo reflecting actual costs in response to inquiries from organizations about renting the facility.
  - Fee increases by \$1 to the Big Bear Alpine Zoo admission fees to offset increases in operating costs.
- Revisions to other fees for Big Bear Valley Recreation and Park District include room rentals increases ranging from 1.7% to 25%, and field preparation fees for football (from \$250/day to \$350/day) and soccer (new fee at \$300/day) games.



# Notable Changes to 2025-26 Recommended Fees – Other Agencies, (Cont'd)

## Special Districts, (Cont'd)

- North Etiwanda Preserve - Revised Parking Fees to offset increases in operating costs.
  - Half-day and Full-day fees are increasing by \$1 and \$2, respectively.
  - Annual Pass is increasing by \$20.
  - Veteran's Annual pass is increasing by \$10.
- Implementation of annual inflationary adjustments of up-to 4% to voter-approved service charges, as previously approved by property owners and the Board upon formation of the various districts.





Questions?