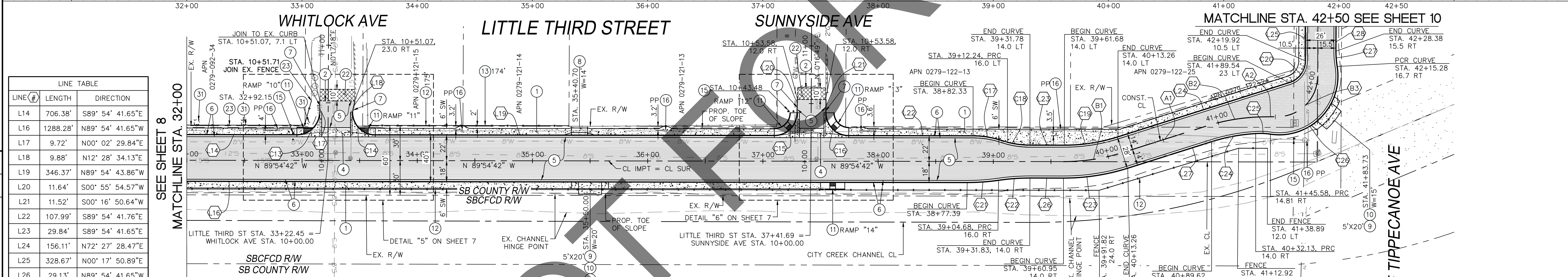
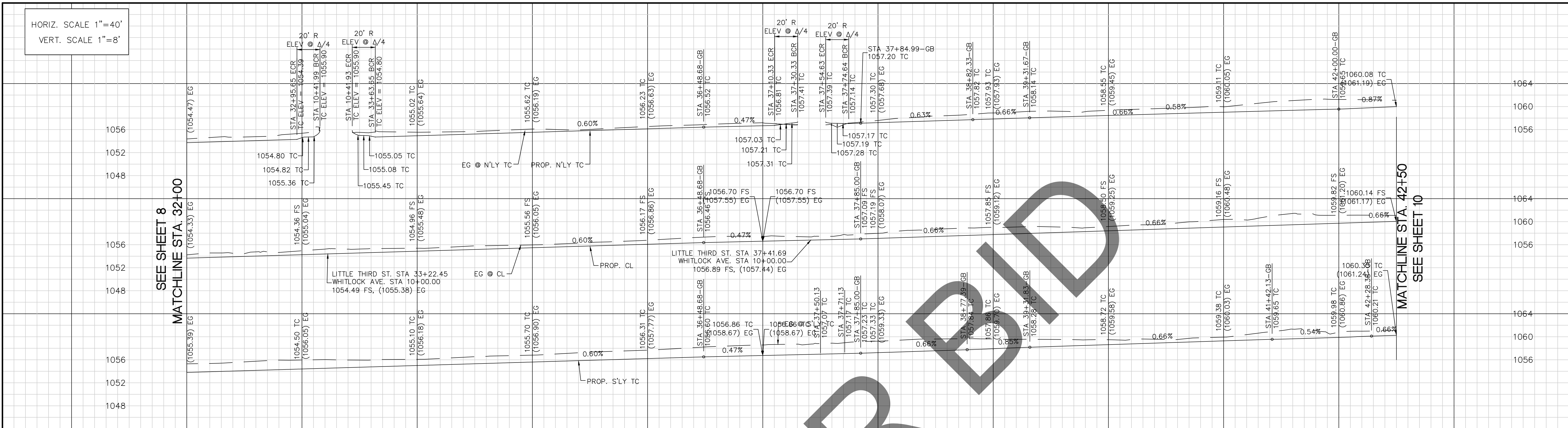


HORIZ. SCALE 1"=40'
VERT. SCALE 1"=8'



LINE #	LENGTH	DIRECTION
L14	706.38'	S89° 54' 41.65°E
L16	1288.28'	N89° 54' 41.65°W
L17	9.72'	N00° 02' 29.84°E
L18	9.88'	N12° 28' 34.13°E
L19	346.37'	N89° 54' 43.86°W
L20	11.64'	S00° 55' 54.57°W
L21	11.52'	S00° 16' 50.64°W
L22	107.99'	S89° 54' 41.76°E
L23	29.84'	S89° 54' 41.65°E
L24	156.11'	N72° 27' 28.47°E
L25	328.67'	N00° 17' 50.89°E
L26	29.13'	N89° 54' 41.65°W
L27	76.36'	S72° 27' 28.47°W
L28	269.97'	S00° 17' 50.89°W

CURVE #	LENGTH	RADIUS	DELTA	TANGENT
C13	31.43'	20.00'	090°02'48.51"	20.02'
C14	31.39'	20.00'	089°56'07.81"	19.98'
C15	31.34'	20.00'	089°46'54.26"	19.92'
C16	31.48'	20.00'	090°11'23.91"	20.07'
C17	25.11'	78.12'	018°24'50.17"	12.66'
C18	25.11'	78.12'	018°24'50.91"	12.66'
C19	47.34'	151.71'	017°52'47.42"	23.87'
C20	25.19'	20.00'	072°09'37.58"	14.57'
C21	27.32'	186.21'	008°24'18.26"	13.68'
C22	27.31'	186.21'	008°24'11.42"	13.68'
C23	56.62'	184.00'	017°37'49.88"	28.53'
C24	39.01'	156.00'	014°19'36.82"	19.61'
C25	12.85'	58.51'	012°34'59.89"	6.45'
C26	95.62'	50.72'	108°01'18.96"	69.84'
C27	13.16'	88.97'	008°28'33.48"	6.59'

CONSTRUCTION NOTES:

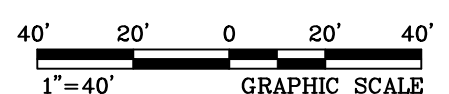
- CONSTRUCT 4-INCH THICK PCC SIDEWALK OVER 95% COMPACTED NATIVE PER SAN BERNARDINO COUNTY STD. PLAN 109 TYPE "C" (MODIFIED) AND AS SHOWN ON PLANS.
- REMOVAL LIMIT, SAWCUT CONCRETE, ASPHALT AND OTHER HARDSCAPE SURFACE AND REMOVE TO THE LIMITS SHOWN ON THIS PLAN.
- CONSTRUCT 8-INCH THICK PCC 8"-17" CROSS GUTTER PER SAN BERNARDINO COUNTY STD. PLAN 119 AND AS SHOWN ON PLANS.
- CONSTRUCT 0.4"-1.5" OF TYPE A, 3/4"-INCH AGGREGATE GRADATION, PG 70-10 HOT MIX ASPHALT; OVER PRIME COAT AND 1.5"-SACK SLURRY CEMENT UP TO 0.4"-FT TOP SURFACE.
- CONSTRUCT 6-INCH PCC CURB AND GUTTER PER SAN BERNARDINO COUNTY STD. PLAN 116.
- CONSTRUCT 8-INCH AC DIKE PER SAN BERNARDINO COUNTY STD. PLAN 117.
- CONSTRUCT 4-INCH THICK PCC DRIVEWAY PER SAN BERNARDINO COUNTY STD. PLAN 128. (MODIFIED) SEE DETAIL "B" ON SHEET 3.
- CONSTRUCT 4-INCH THICK PCC DRIVEWAY TRANSITION.
- CONSTRUCT 4-INCH THICK PCC DEPRESSED DRIVEWAY PER DETAIL "A" ON SHEET 3.
- CONSTRUCT PCC CURB RAMP PER CALTRANS STD PLAN A88A AND AS SHOWN ON PLANS.
- CONSTRUCT 6'-FT CHAIN LINK FENCE PER SAN BERNARDINO COUNTY BOUNDARY FENCE STD. 403.
- RELOCATE MAILBOX PER SAN BERNARDINO COUNTY STD. PLAN 312.
- CONSTRUCT PCC PAD PER DETAIL "C" ON SHEET 3.
- PROTECT IN PLACE.
- CONSTRUCT 6'-FT DOUBLE DRIVE CHAIN LINK GATE PER SAN BERNARDINO COUNTY BOUNDARY FENCE STD. 403.
- COLD PLANE EXISTING PAVEMENT FOR A DEPTH OF 0.15'-FT AND 2'-FT WIDE THEN OVERLAY WITH 0.15'-FT HMA.
- REPLACE EXISTING REDWOOD FENCE AND PAINT, IN KIND, FOR ADDRESS 8188 WHITLOCK AVE, SAN BERNARDINO, CA 92410 (APN 0279-092-34).
- RELOCATE TWO (2) PATIO LIGHTS AND ONE CAMERA FOR ADDRESS 8188 WHITLOCK AVE, SAN BERNARDINO, CA 92410 (APN 0279-092-34).

LINE #	LENGTH	DIRECTION
A1	76.36'	N72° 27' 28.47°E
A2	12.06'	N89° 25' 19.91°E

CURVE #	LENGTH	RADIUS	DELTA	TANGENT
B1	52.31'	170.00'	017°37'49.88"	26.36'
B2	50.33'	170.00'	016°57'51.44"	25.35'
B3	54.44'	35.00'	089°07'29.02"	34.47'

LEGEND:

- CONSTRUCT PCC SIDEWALK & DRIVEWAY
- CONSTRUCT A.C. PAVEMENT
- COLD PLANE AND OVERLAY



FILE NO. 497700-010 & 497850-010

FILE NO. 497700-010 & 497850-010

PLANS PREPARED UNDER THE SUPERVISION OF:

GIUSEPPE S. CANZONIERI
4/15/2024
DATE



MARK	CHANGES	RESIDENT ENGINEER	DATE
	NO CHANGES		

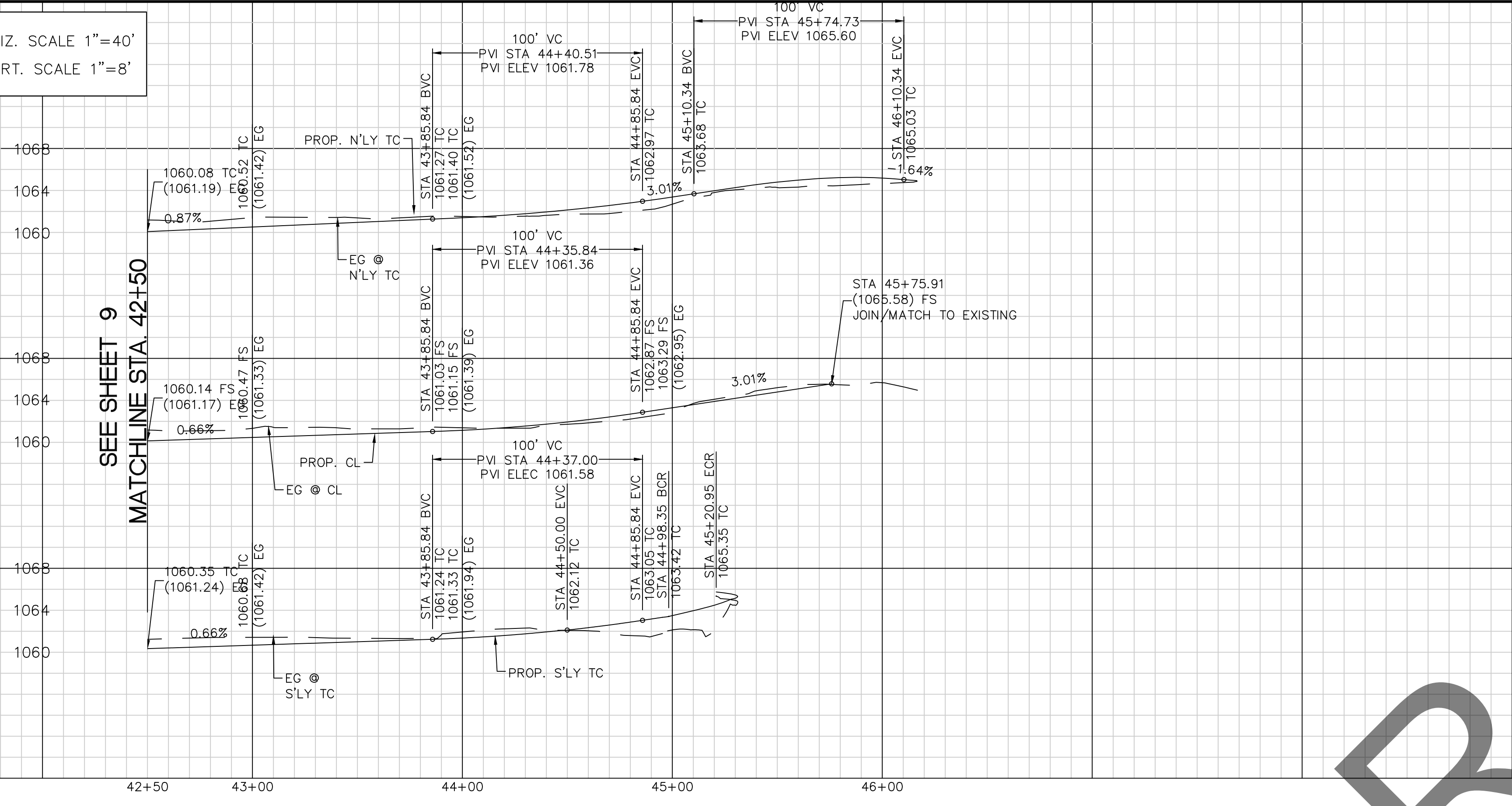
FIELD CHANGES

SAN BERNARDINO COUNTY
DEPARTMENT OF PUBLIC WORKS

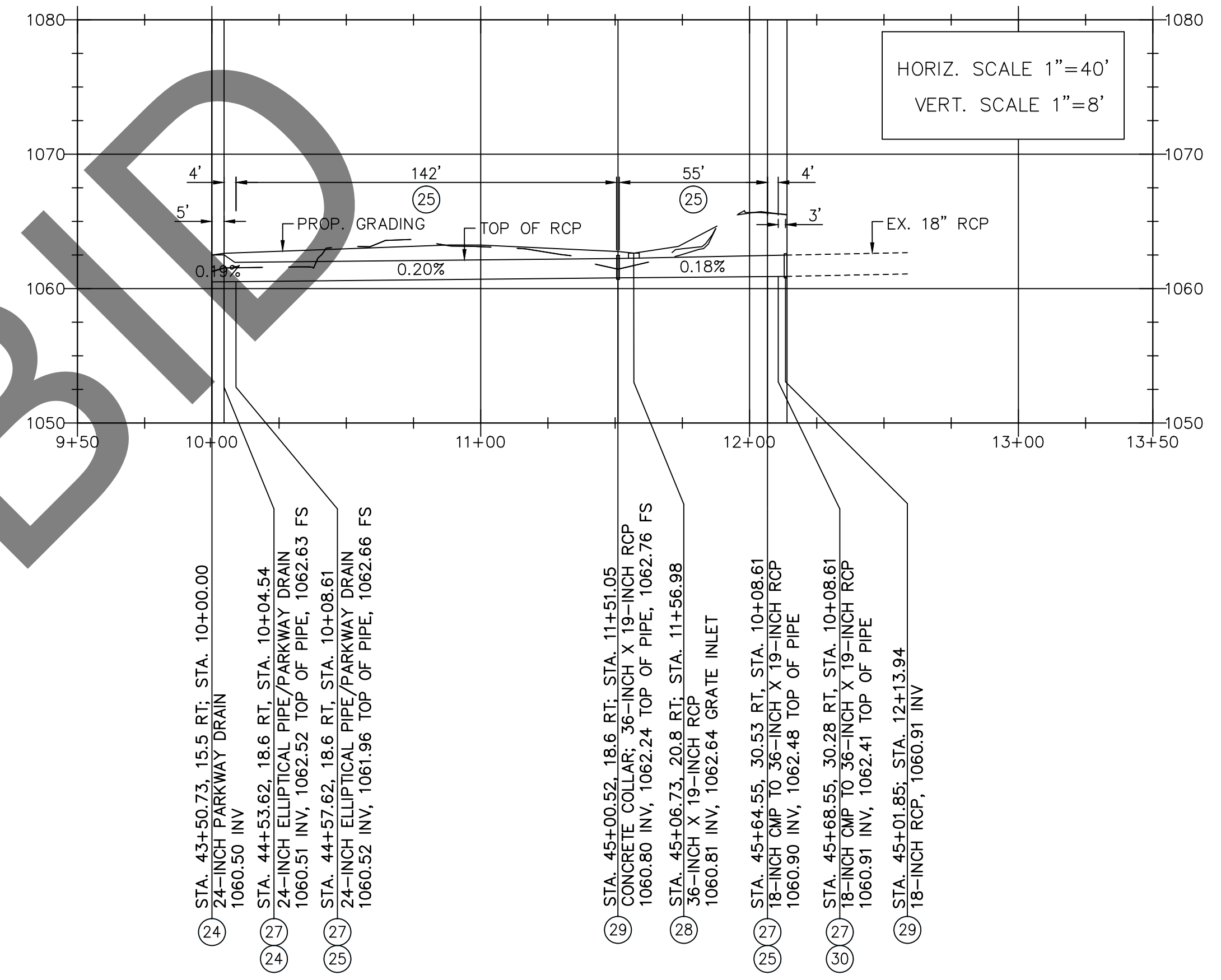
DESIGNED BY: RP	DRAWN BY: WG	CHECKED BY: AA	RECOMMENDED BY: <i>Chris Nguyen</i> CHRIS NGUYEN, ENGINEERING MANAGER 5/16/2024 DATE
APPROVED BY: <i>Eloy Ruvalcaba</i> ELOY RUVALCABA, SUPERVISING ENGINEER 5/16/2024 DATE			APPROVED BY: <i>Mervat Mikhail</i> MERVAT MIKHAIL, DEPUTY DIRECTOR 5/17/24 DATE

STREET IMPROVEMENT PLAN				
LITTLE THIRD ST AND LITTLE TIPPECANOE AVE				
SAN BERNARDINO AREA				
J.L. REF.	W.O. NO.	PLAN SCALE	SHT. NO.	TOT. SHT.'S.
12034	H15122	1" = 40'	10	15

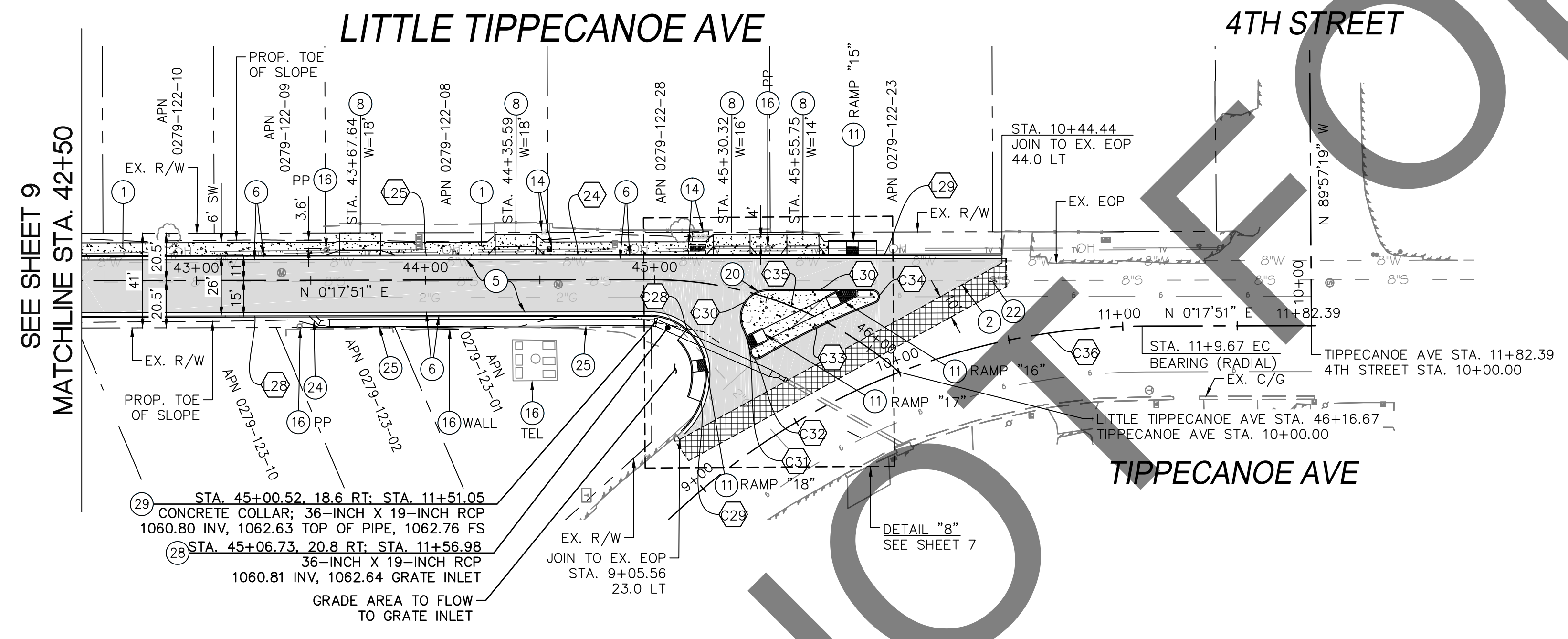
HORIZ. SCALE 1"=40'
VERT. SCALE 1"=8'



PARKWAY DRAIN/RCP PROFILE



HORIZ. SCALE 1"=40'
VERT. SCALE 1"=8'



CONSTRUCTION NOTES:

- 1 - CONSTRUCT 4-INCH THICK PCC SIDEWALK OVER 95% COMPACTED NATIVE PER SAN BERNARDINO COUNTY STD. PLAN 109 TYPE "C" (MODIFIED) AND AS SHOWN ON PLANS.
- 2 - REMOVAL LIMIT. SAWCUT CONCRETE, ASPHALT AND OTHER HARDSCAPE SURFACE AND REMOVE TO THE LIMITS SHOWN ON THIS PLAN.
- 5 - CONSTRUCT 0.4-FT OF TYPE A, 3/4-INCH AGGREGATE GRADATION, PG 70-10 HOT MIX ASPHALT; OVER PRIME COAT AND 1.5-SACK SLURRY CEMENT UP TO 0.4-FT TOP SURFACE.
- 6 - CONSTRUCT 6-INCH PCC CURB AND GUTTER PER SAN BERNARDINO COUNTY STD. PLAN 116.
- 8 - CONSTRUCT 4-INCH THICK PCC DRIVEWAY PER SAN BERNARDINO COUNTY STD. PLAN 128. (MODIFIED) SEE DETAIL "B" ON SHEET 3.
- 11 - CONSTRUCT PCC CURB RAMP PER CALTRANS STD PLAN A88A AND AS SHOWN ON PLANS.
- 14 - RELOCATE MAILBOX PER SAN BERNARDINO COUNTY STD. PLAN 312.
- 16 - PROTECT IN PLACE.
- 20 - CONSTRUCT TYPE A1-6 PCC CURB PER CALTRANS STD. A87A.
- 22 - COLD PLANE EXISTING PAVEMENT FOR A DEPTH OF 0.15-FT AND 2-FT WIDE THEN OVERLAY WITH 0.15-FT HMA.
- 24 - CONSTRUCT 24-INCH PARKWAY DRAIN PER SPPWC STD 151-3.
- 25 - CONSTRUCT 36-INCH X 19-INCH ELLIPTICAL RCP (CLASS II, 1000D).
- 27 - CONSTRUCT PIPE TRANSITION PER SPPWC STD. PLAN 340-2 (MODIFIED); L=4FT
- 28 - CONSTRUCT CONCRETE PIPE INLET WITH GRATE PER CALTRANS STD. D75B, TYPE GCP.
- 29 - CONSTRUCT CONCRETE COLLAR PER SPPWC STD. PLAN 380-4.
- 30 - CONSTRUCT 18-INCH RCP STORM DRAIN (CLASS II, 1000D)

LEGEND:

- CONSTRUCT P.C.C. SIDEWALK & DRIVEWAY
- CONSTRUCT A.C. PAVEMENT
- COLD PLANE AND OVERLAY

LINE TABLE

LINE #	LENGTH	DIRECTION
L25	328.67'	N00° 17' 50.89"E
L28	269.97'	S00° 17' 50.89"W
L29	103.10'	N00° 17' 28.40"E
L30	45.78'	N00° 22' 29.76"E

CURVE TABLE

CURVE #	LENGTH	RADIUS	DELTA	TANGENT
C28	36.67'	25.00'	084°02'33.53"	22.53'
C29	30.43'	35.00'	049°48'40.44"	16.25'
C30	23.87'	12.00'	113°57'35.21"	18.46'
C31	11.47'	47.13'	013°56'55.21"	5.77'
C32	5.75'	3.00'	109°43'40.07"	4.26'
C33	55.43'	332.05'	009°33'50.19"	27.78'
C34	8.33'	3.00'	159°00'21.98"	16.19'

PLANS PREPARED UNDER THE SUPERVISION OF:

GIUSEPPE S. CANZONIERI
4/15/2024
DATE



MARK	CHANGES	RESIDENT ENGINEER	DATE
	NO CHANGES		

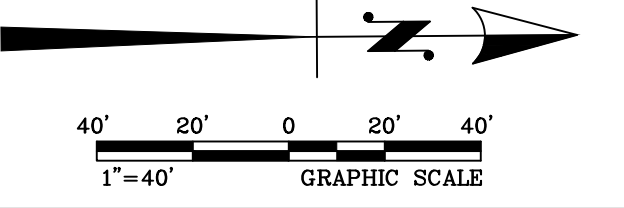
FIELD CHANGES

SAN BERNARDINO COUNTY
DEPARTMENT OF PUBLIC WORKS

DESIGNED BY: RP	DRAWN BY: WG	CHECKED BY: AA	RECOMMENDED BY: <i>Chris Nguyen</i>	5/16/2024
			CHRIS NGUYEN ENGINEERING MANAGER	DATE
			APPROVED BY: <i>Mervat + Mikhail</i>	5/17/24
			MERVAT MIKHAIL, DEPUTY DIRECTOR	DATE

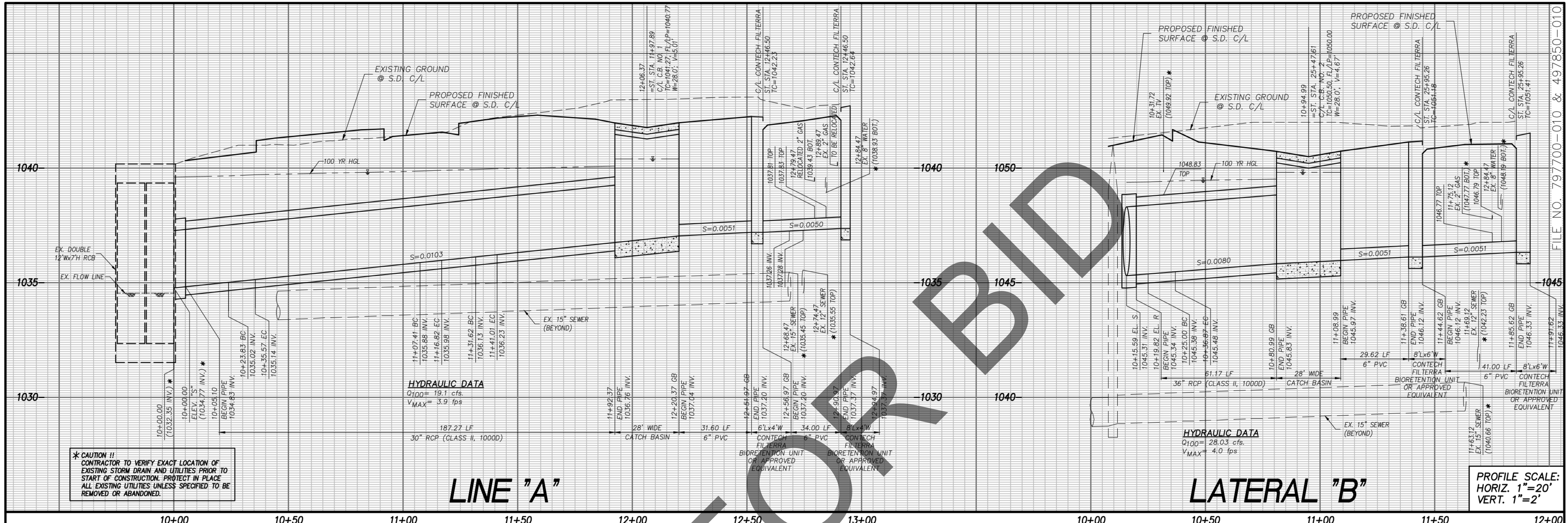
STREET IMPROVEMENTS
LITTLE THIRD ST AND LITTLE TIPPECANOE AVE
SAN BERNARDINO AREA

J.L. REF. 12034	W.O. NO. H15122	PLAN SCALE 1" = 40'	SHT. NO. 11	TOT. SHT'S. 15
-----------------	-----------------	---------------------	-------------	----------------



MARK	REVISIONS	DATE

FILE NO. 497700-010 & 497850-010

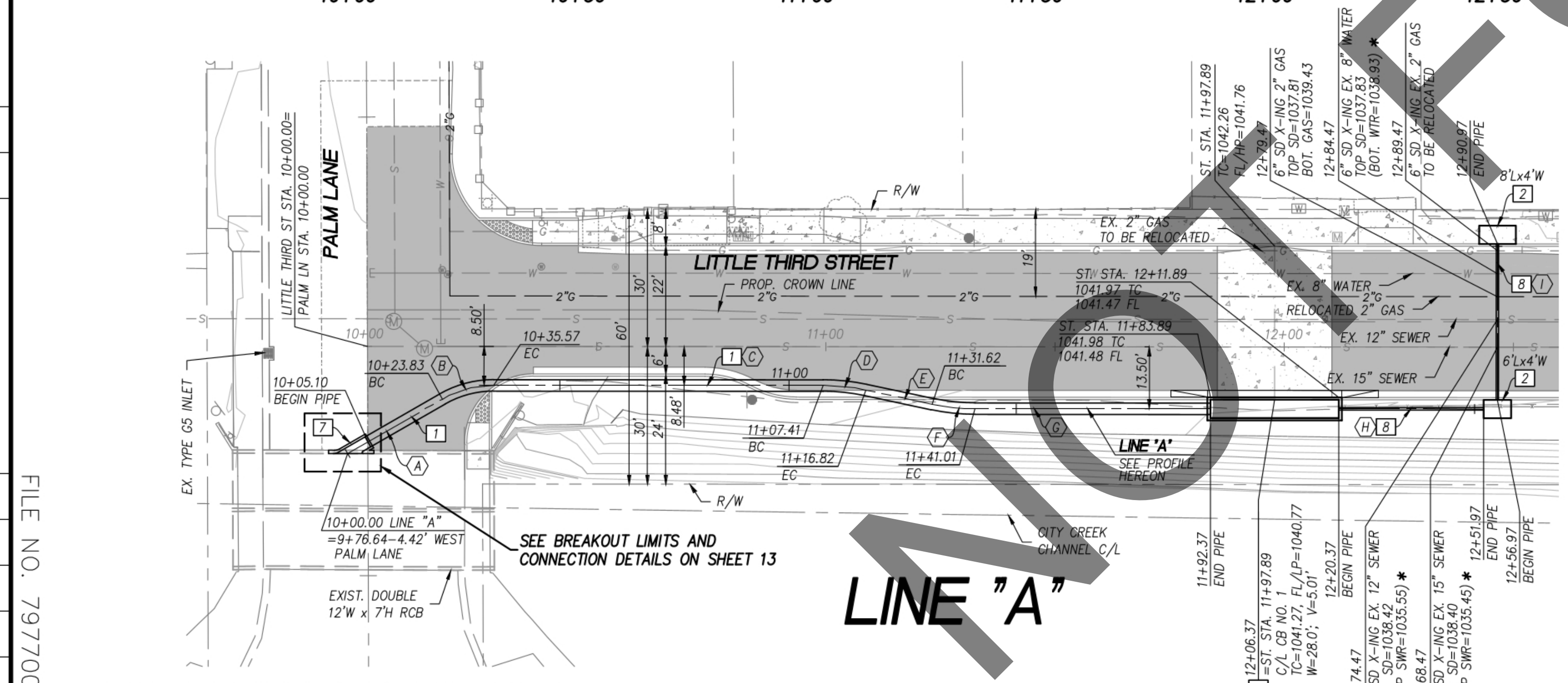


*** CAUTION !!**
CONTRACTOR TO VERIFY EXACT LOCATION OF EXISTING STORM DRAIN AND UTILITIES PRIOR TO START OF CONSTRUCTION. PROTECT IN PLACE ALL EXISTING UTILITIES UNLESS SPECIFIED TO BE REMOVED OR ABANDONED.

LINE "A"

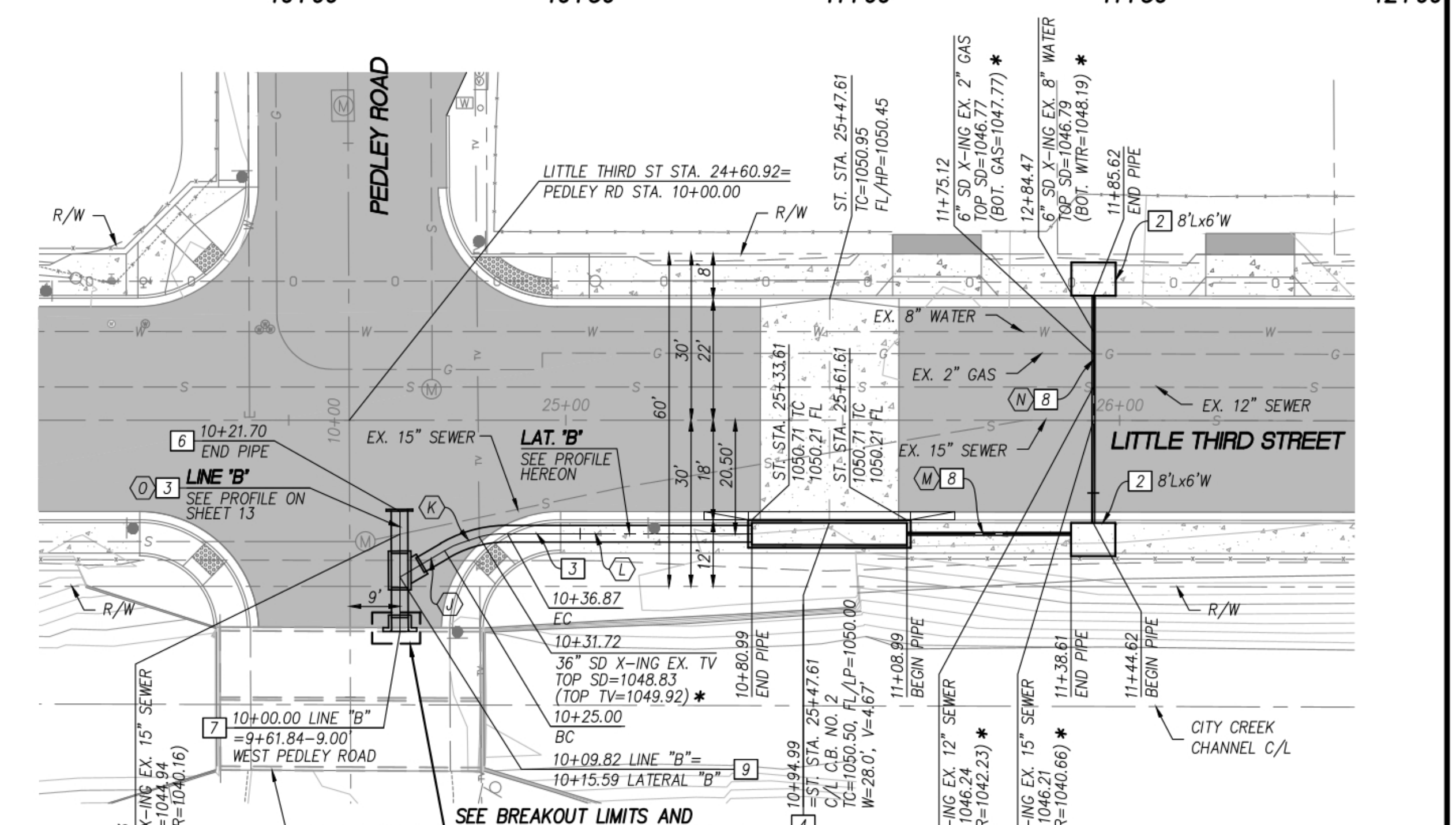
LATERAL "B"

PROFILE SCALE:
HORIZ. 1"=20'
VERT. 1"=2'



CURVE/LINE DATA

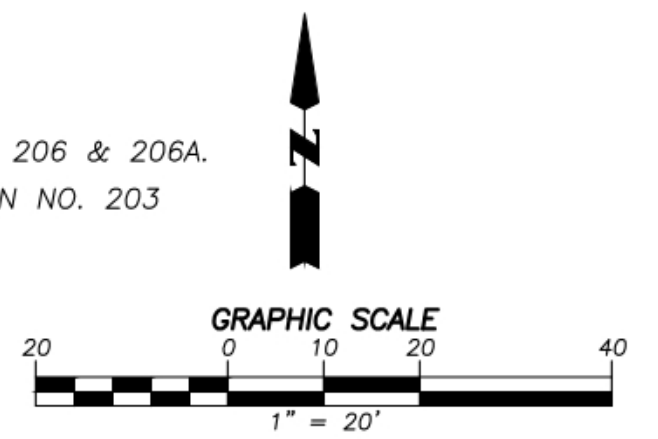
NO.	DELTA/BEARING	RADIUS	LEN/DIST.	TANGENT
(A)	N60°07'50"E	-	23.83'	-
(B)	29°53'27"	22.50'	11.74'	6.01'
(C)	N89°58'43"W	-	71.85'	-
(D)	11°58'54"	45.00'	9.41'	4.72'
(E)	N77°59'49"W	-	14.79'	-
(F)	11°57'47"	45.00'	9.40'	4.72'
(G)	N89°57'36"W	-	51.36'	-
(H)	N89°57'36"W	-	31.61'	-
(I)	N00°02'24"E	-	34.00'	-
(J)	N59°46'00"E	-	9.41'	-
(K)	30°14'35"	22.50'	11.88'	6.08'
(L)	N89°59'25"W	-	44.12'	-
(M)	N89°59'25"W	-	29.62'	-
(N)	N00°05'00"E	-	41.00'	-
(O)	N00°14'00"W	-	21.70'	-



LATERAL "B"

STORM DRAIN CONSTRUCTION NOTES

- CONSTRUCT 30" RCP STORM DRAIN (CLASS II 10000).
- CONSTRUCT CONTECH FILTERRA BIORETENTION UNIT (LxW PER PLAN). SEE DETAILS PER SHEETS 11A & 11B.
- CONSTRUCT 36" RCP STORM DRAIN (CLASS II 10000).
- CONSTRUCT TYPE "A" CATCH BASIN PER COUNTY OF SAN BERNARDINO STD. PLAN NO. 206 & 206A.
- CONSTRUCT LOCAL DEPRESSION PER COUNTY OF SAN BERNARDINO MODIFIED STD. PLAN NO. 203 (8" TRANSITION BOTH SIDES; CF 12" TO 6").
- CONSTRUCT PIPE BULKHEAD (OR BRICK & CONCRETE MORTAR PLUG).
- CONSTRUCT JUNCTION STRUCTURE-PIPE TO RCB PER S.P.P.W.C. STD. PLAN 333-2 AND PER BREAKOUT LIMITS AND CONNECTION DETAILS ON SHEET 13.
- CONSTRUCT 6" PVC (SDR 35) STORM DRAIN.
- CONSTRUCT TRANSITION STRUCTURE PER S.P.P.W.C. STD. PLAN 340-2.



PLANS PREPARED UNDER THE SUPERVISION OF:

ACI
AGUILAR CONSULTING INC.
231 E. ALESSANDRO BLVD. #6A393
RIVERSIDE, CA 92508
PH. (909) 709-4393

CEAZAR V. AGUILAR
REGISTERED PROFESSIONAL ENGINEER
No. 41679
Exp. 03/31/26
CIVIL
4/12/2024
DATE

MARK	CHANGES	RESIDENT ENGINEER	DATE
	NO CHANGES		

FIELD CHANGES

SAN BERNARDINO COUNTY
DEPARTMENT OF PUBLIC WORKS

DESIGNED BY: CVA
DRAWN BY: CPA
CHECKED BY: CVA
RECOMMENDED BY: *Chris Nguyen* 5/16/2024
DATE

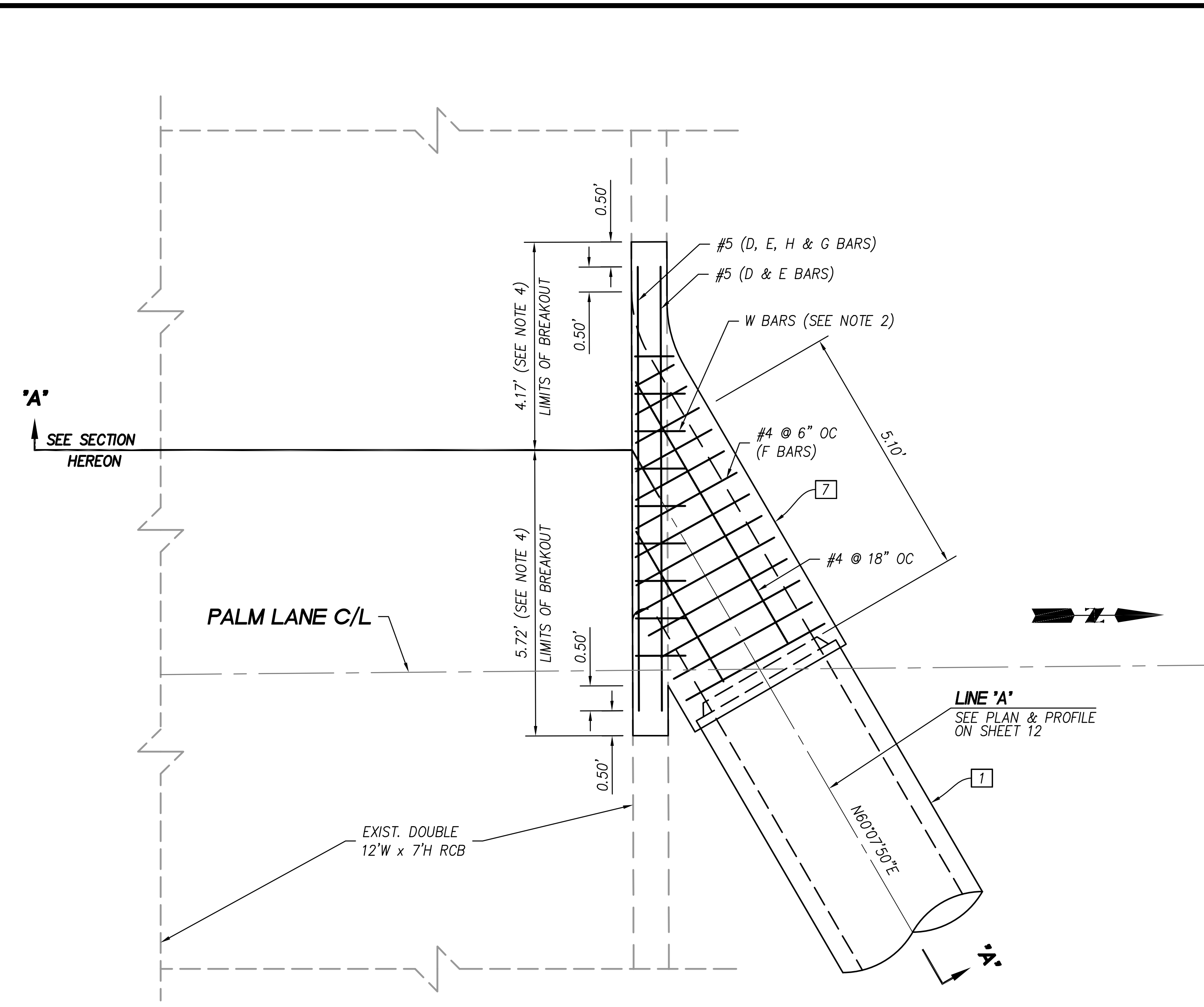
APPROVED BY: *Mervat Mkhail* 5/17/24
DATE
ELOY RIVALCABA
SUPERVISING ENGINEER
MERVAT MKHAIL
DEPUTY DIRECTOR

STORM DRAIN IMPROVEMENT PLANS
LITTLE THIRD ST AND LITTLE TIPPECANOE AVE

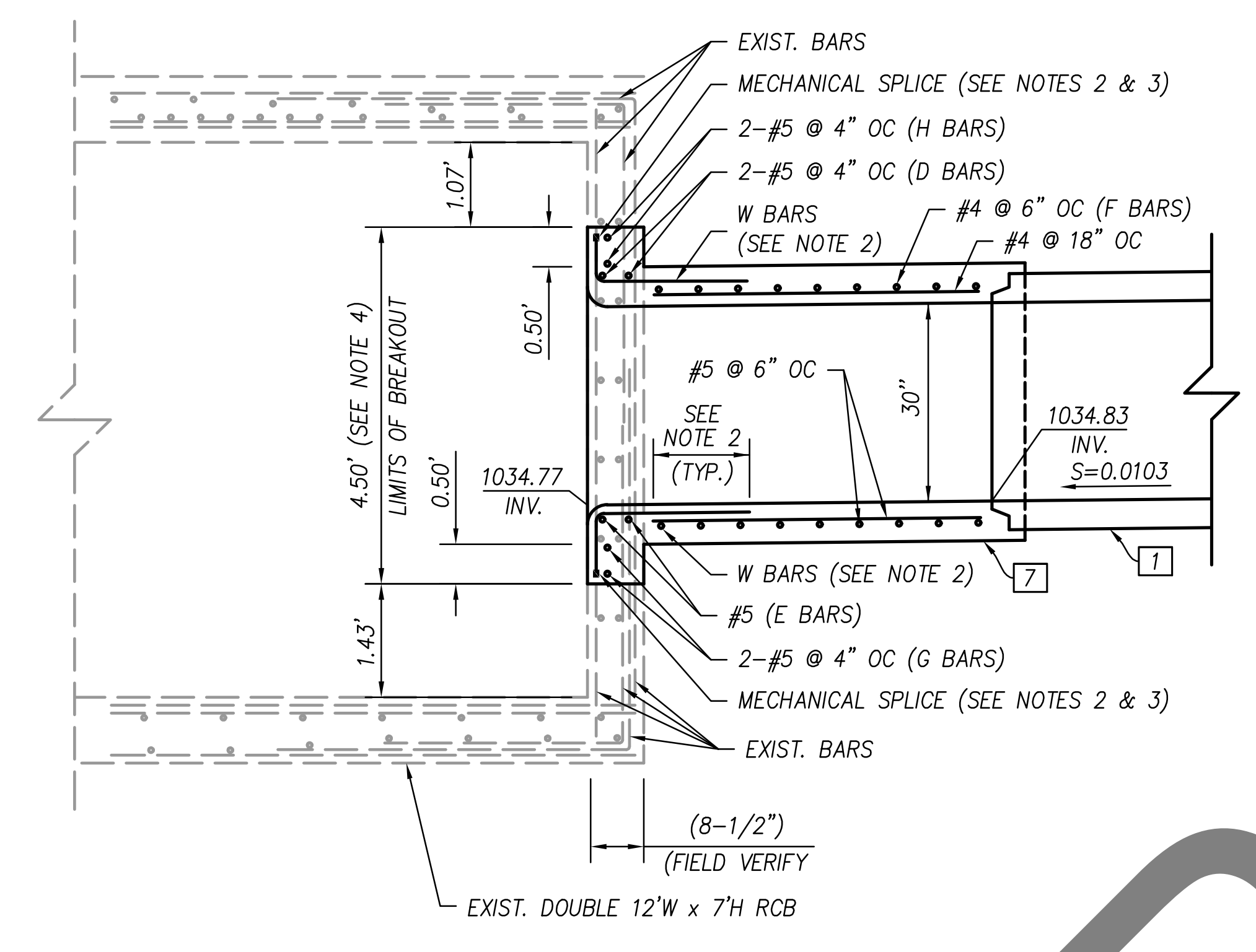
JLL REF.	W.O. NO.	PLAN SCALE	SHT. NO.	TOT. SHT'S.
12034	H1512	1"=20'	12	15

FILE NO. 797700-010 & 497850-010

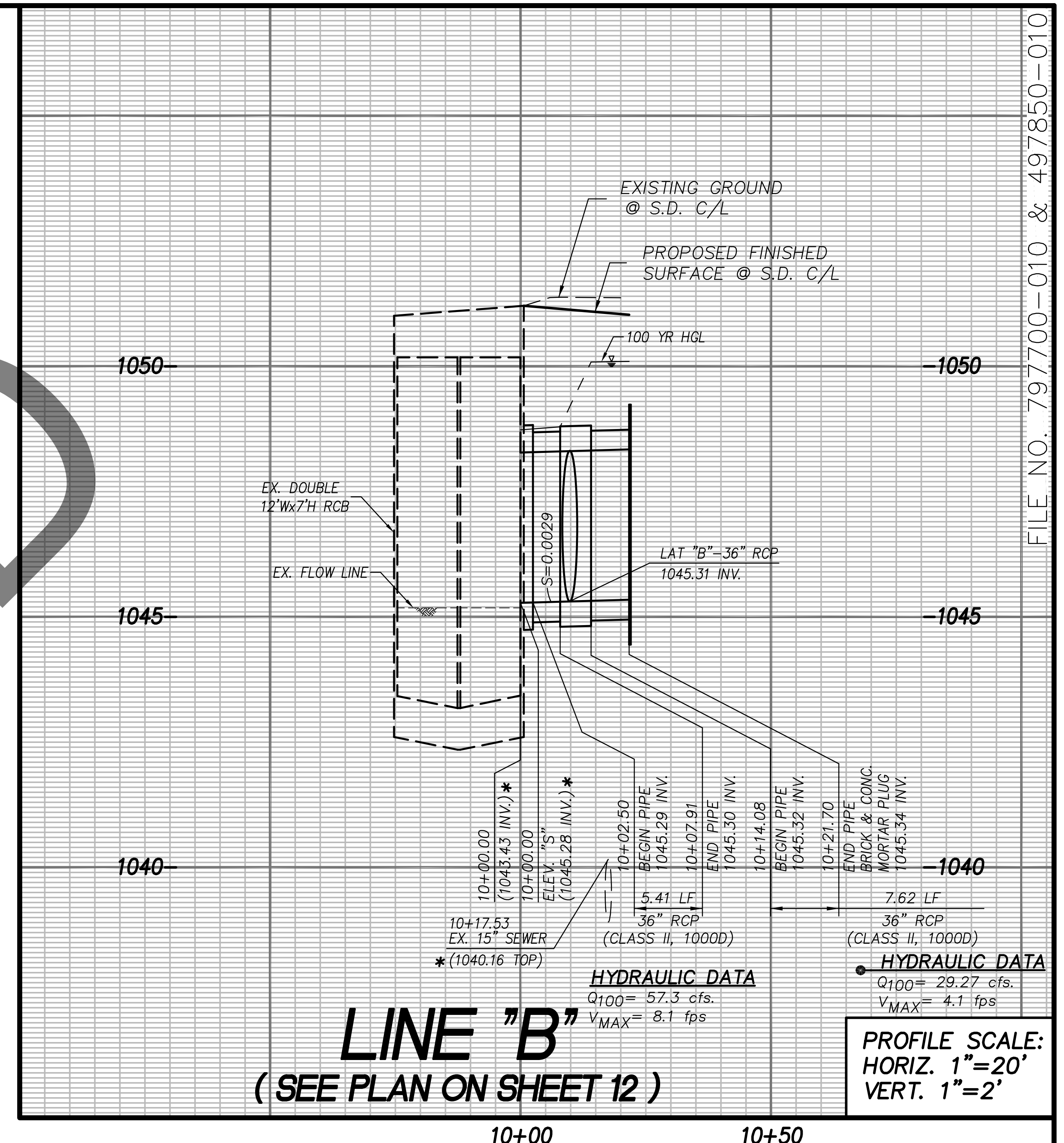
FILE NO. 797700-010 & 497850-010



BREAKOUT LIMITS AND CONNECTION DETAILS FOR LINE "A" JUNCTION STRUCTURE PER S.P.P.W.C. STD. PLAN 333-2
SCALE: 1"=2'



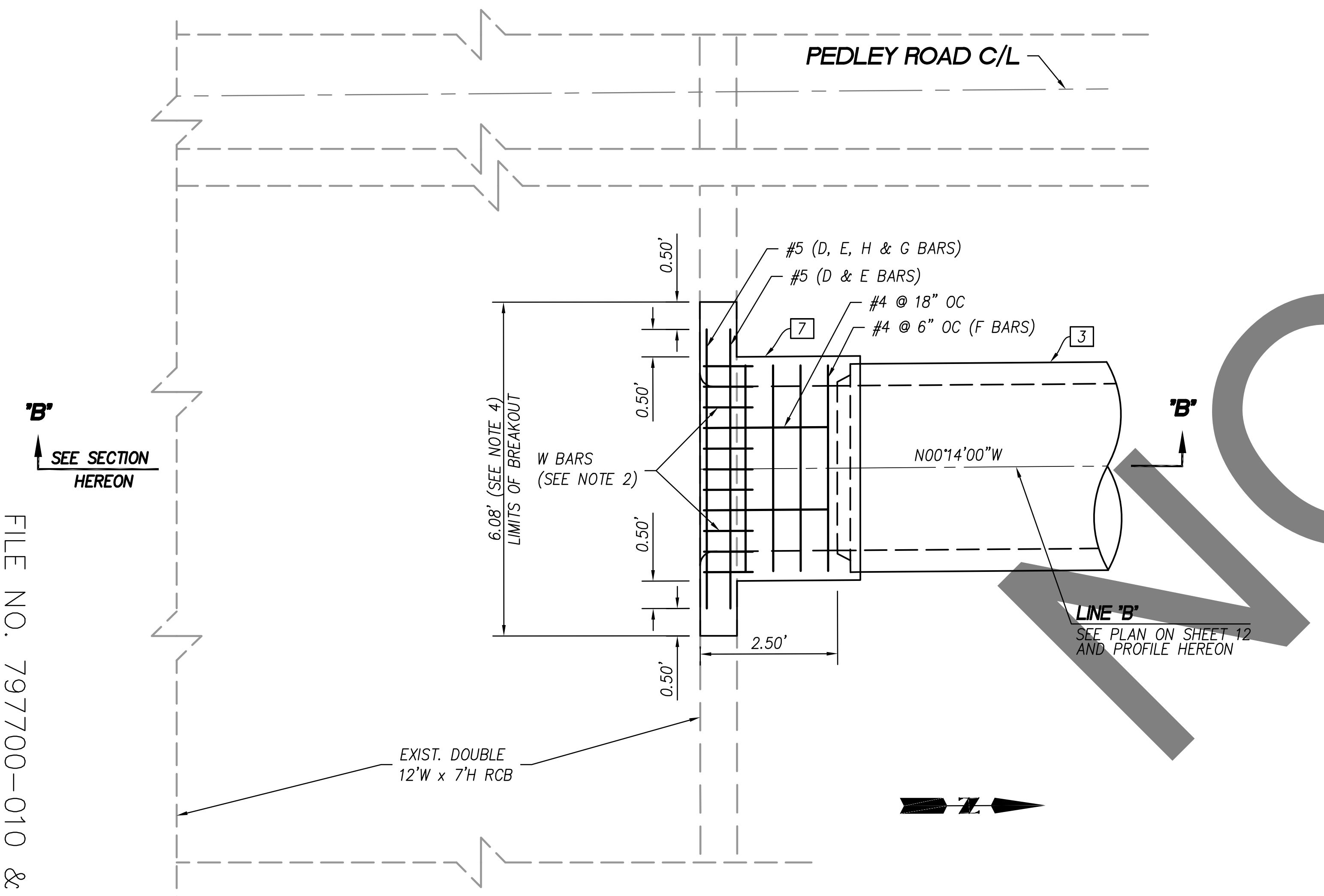
SECTION "A"-A"
SCALE: HORIZ. 1"=2'
VERT. 1"=2'



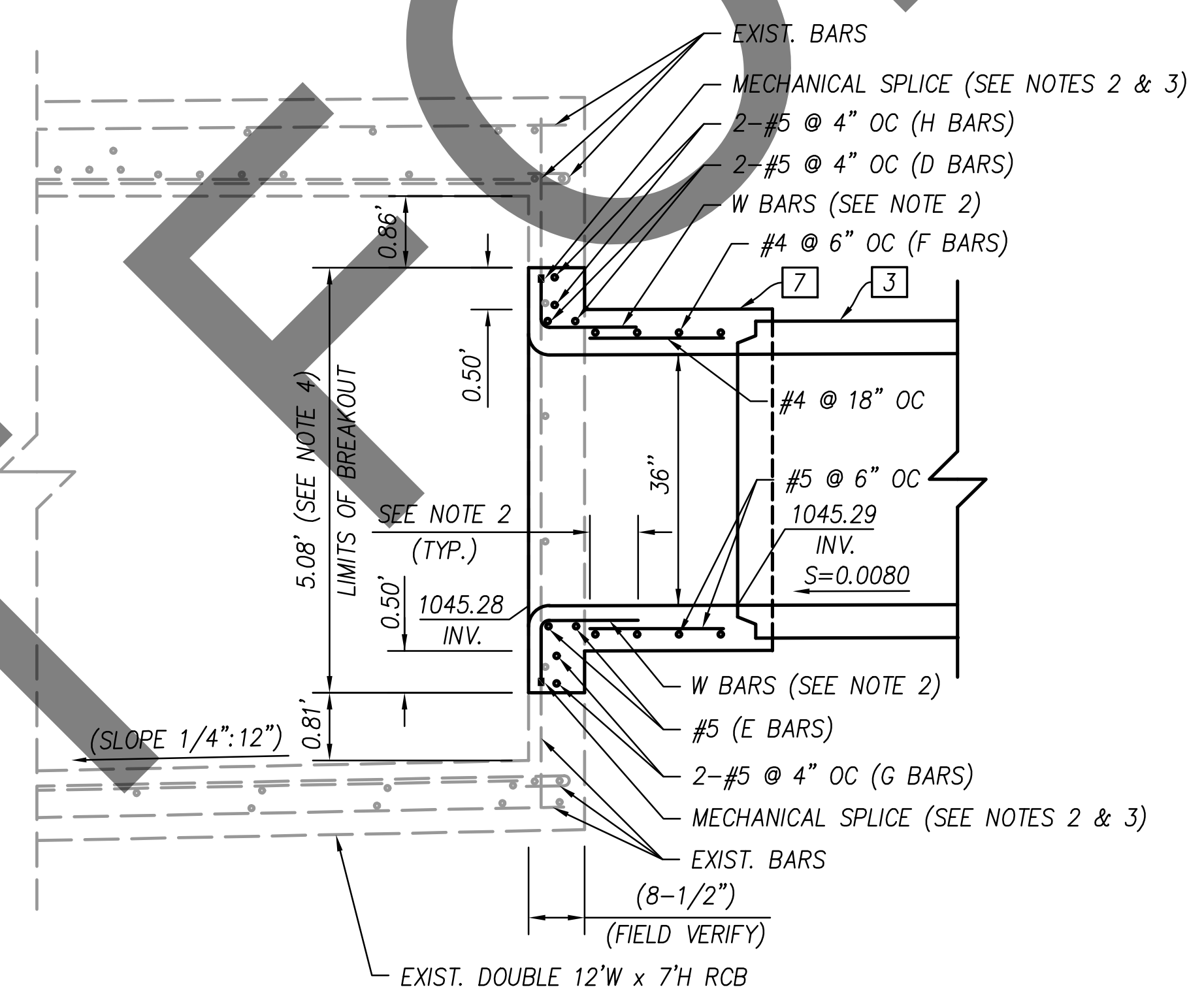
LINE "B"
(SEE PLAN ON SHEET 12)

HYDRAULIC DATA
Q₁₀₀ = 57.3 cfs.
V_{MAX} = 8.1 fps

HYDRAULIC DATA
Q₁₀₀ = 29.27 cfs.
V_{MAX} = 4.1 fps



BREAKOUT LIMITS AND CONNECTION DETAILS FOR LINE "B" JUNCTION STRUCTURE PER S.P.P.W.C. STD. PLAN 333-2
SCALE: 1"=2'



SECTION "B"-B"
SCALE: HORIZ. 1"=2'
VERT. 1"=2'

NOTES:

- CUT CONCRETE BOX SMOOTH AND PAINT.
- W BARS WILL BE OF SPACING AND SIZE AS THE EX. BARS FROM INSIDE WALL OF RCB; EXPOSE EX. BARS TO A LENGTH ADEQUATE FOR SPLICING WITH NEW W BAR. THE LENGTH OF LAP SPLICE MUST BE AT LEAST 30x BAR DIAMETER.
- MECHANICAL BAR COUPLER SHALL CONFORM TO CALTRANS STD. SPECS. 52-6.03(2).
- THE BREAKOUT LIMIT IS APPROXIMATE AND SUBJECT TO ADJUSTMENT BASED ON ACTUAL FIELD CONDITIONS AS DETERMINED BY THE ENGINEER.

STORM DRAIN CONSTRUCTION NOTES

- CONSTRUCT 30" RCP STORM DRAIN (CLASS II, 1000D).
- CONSTRUCT 36" RCP STORM DRAIN (CLASS II, 1000D).
- CONSTRUCT JUNCTION STRUCTURE-PIPE TO RCB PER S.P.P.W.C. STD. PLAN 333-2 AND PER BREAKOUT LIMITS AND CONNECTION DETAILS HEREON.

REVISIONS	DATE	APPR.

FILE NO. 797700-010 & 497850-010

PLANS PREPARED UNDER THE SUPERVISION OF:

ACI AGUILAR CONSULTING INC.
231 E. ALESSANDRO BLVD. #6A393
RIVERSIDE, CA 92508
PH. (909) 709-4393

CEAZAR V. AGUILAR
4/12/2024
DATE



MARK	CHANGES	RESIDENT ENGINEER	DATE
	NO CHANGES		

FIELD CHANGES

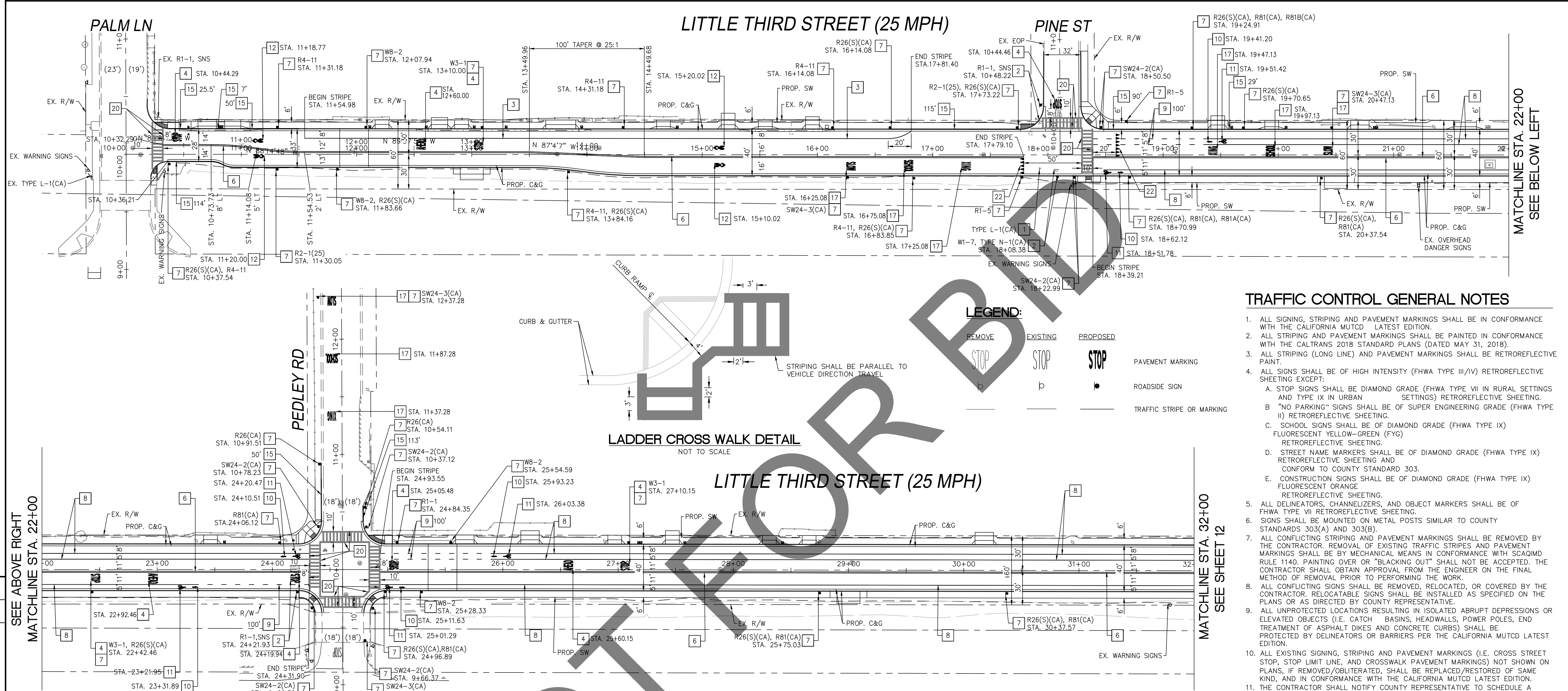
SAN BERNARDINO COUNTY
DEPARTMENT OF PUBLIC WORKS

DESIGNED BY: CVA
DRAWN BY: CPA
CHECKED BY: CVA
RECOMMENDED BY: Chris Nguyen, 5/16/2024
CHRIS NGUYEN, ENGINEERING MANAGER

APPROVED BY: Mervat Mikhail, 5/17/24
MERVAT MIKHAIL, DEPUTY DIRECTOR

STORM DRAIN IMPROVEMENT PLANS
LITTLE THIRD ST AND LITTLE
TIPPECANOE AVE

J.L. REF.	W.O. NO.	PLAN SCALE	SHT. NO.	TOT. SHT'S.
12034	H15122	1"=20'	13	15



LADDER CROSS WALK DETAIL NOT TO SCALE

TRAFFIC CONTROL GENERAL NOTES

- 1. ALL SIGNING, STRIPING AND PAVEMENT MARKINGS SHALL BE IN CONFORMANCE WITH THE CALIFORNIA MUTCD LATEST EDITION.
2. ALL STRIPING AND PAVEMENT MARKINGS SHALL BE PAINTED IN CONFORMANCE WITH THE CALTRANS 2018 STANDARD PLANS (DATED MAY 31, 2018).
3. ALL STRIPING (LONG LINE) AND PAVEMENT MARKINGS SHALL BE RETROREFLECTIVE PAINT.
4. ALL SIGNS SHALL BE OF HIGH INTENSITY (FHWA TYPE III/IV) RETROREFLECTIVE SHEETING EXCEPT:
A. STOP SIGNS SHALL BE DIAMOND GRADE (FHWA TYPE VII) IN RURAL SETTINGS AND TYPE IX IN URBAN SETTINGS) RETROREFLECTIVE SHEETING.
B. "NO PARKING" SIGNS SHALL BE OF SUPER ENGINEERING GRADE (FHWA TYPE II) RETROREFLECTIVE SHEETING.
C. SCHOOL SIGNS SHALL BE OF DIAMOND GRADE (FHWA TYPE IX) FLUORESCENT YELLOW-GREEN (FYG) RETROREFLECTIVE SHEETING.
D. STREET NAME MARKERS SHALL BE OF DIAMOND GRADE (FHWA TYPE IX) RETROREFLECTIVE SHEETING AND CONFORM TO COUNTY STANDARD 303.
E. CONSTRUCTION SIGNS SHALL BE OF DIAMOND GRADE (FHWA TYPE IX) FLUORESCENT ORANGE RETROREFLECTIVE SHEETING.
5. ALL DELINEATORS, CHANNELIZERS, AND OBJECT MARKERS SHALL BE OF FHWA TYPE VII RETROREFLECTIVE SHEETING.
6. SIGNS SHALL BE MOUNTED ON METAL POSTS SIMILAR TO COUNTY STANDARDS 303(A) AND 303(B).
7. ALL CONFLICTING STRIPING AND PAVEMENT MARKINGS SHALL BE REMOVED BY THE CONTRACTOR. REMOVAL OF EXISTING TRAFFIC STRIPES AND PAVEMENT MARKINGS SHALL BE BY MECHANICAL MEANS IN CONFORMANCE WITH SCAQIMD RULE 1140. PAINTING OVER OR "BLACKING OUT" SHALL NOT BE ACCEPTED. THE CONTRACTOR SHALL OBTAIN APPROVAL FROM THE ENGINEER ON THE FINAL METHOD OF REMOVAL PRIOR TO PERFORMING THE WORK.
8. ALL CONFLICTING SIGNS SHALL BE REMOVED, RELOCATED, OR COVERED BY THE CONTRACTOR. RELOCATABLE SIGNS SHALL BE INSTALLED AS SPECIFIED ON THE PLANS OR AS DIRECTED BY COUNTY REPRESENTATIVE.
9. ALL UNPROTECTED LOCATIONS RESULTING IN ISOLATED ABRUPT DEPRESSIONS OR ELEVATED OBJECTS (I.E. CATCH BASINS, HEADWALLS, POWER POLES, END TREATMENT OF ASPHALT DIKES AND CONCRETE CURBS) SHALL BE PROTECTED BY DELINEATORS OR BARRIERS PER THE CALIFORNIA MUTCD LATEST EDITION.
10. ALL EXISTING SIGNING, STRIPING AND PAVEMENT MARKINGS (I.E. CROSS STREET STOP, STOP LIMIT LINE, AND CROSSWALK PAVEMENT MARKINGS) NOT SHOWN ON PLANS, IF REMOVED/OBLITERATED, SHALL BE REPLACED/RESTORED OF SAME KIND, AND IN CONFORMANCE WITH THE CALIFORNIA MUTCD LATEST EDITION.
11. THE CONTRACTOR SHALL NOTIFY COUNTY REPRESENTATIVE TO SCHEDULE A FINAL REVIEW (WALK THROUGH) WITH TRAFFIC DIVISION PERSONNEL FOR APPROVAL OF TRAFFIC CONTROL DEVICES PRIOR TO PROJECT ACCEPTANCE.

SIGNING AND STRIPING NOTES:

- 1 - REMOVE EXISTING SIGN AND POST.
2 - RELOCATE EXISTING SIGN AND POST PER CA MUTCD 2014, FIG 2A-2(CA).
3 - APPLY 6-INCH WHITE EDGE LINE STRIPE PER CALTRANS STANDARD PLAN A20B, DETAIL 27B.
4 - APPLY WHITE "STOP", "AHEAD", "PED", "XING" PAVEMENT MARKING PER CALTRANS STANDARD PLAN A24D.
5 - REMOVE SIGN.
6 - APPLY 6-INCH DOUBLE YELLOW CENTERLINE PER CALTRANS STANDARD PLAN A20A, DETAIL 22.
7 - FURNISH AND INSTALL SIGN AND POST PER CA MUTCD 2014, FIG 2A-2(CA)
8 - APPLY 6-INCH WHITE BIKE LANE LINE PER CALTRANS STANDARD PLAN A20D, DETAIL 39.
9 - APPLY 6-INCH WHITE BIKE INTERSECTION LINE PER CALTRANS STANDARD PLAN A20D, DETAIL 39A.
10 - APPLY WHITE BIKE LANE ARROW PAVEMENT MARKING PER CALTRANS STANDARD PLAN A24A.
11 - APPLY WHITE PAVEMENT BIKE SYMBOL WITH PERSON MARKING PER CALTRANS STANDARD PLAN A24C.
12 - APPLY WHITE SHARED ROADWAY BICYCLE PAVEMENT MARKING PER CALTRANS STANDARD PLAN A24C.
13 - INSTALL SIGN.
14 - APPLY 12-INCH WHITE LADDER CROSSWALK PER CALTRANS STANDARD PLAN A24F.
15 - PAINT RED CURB.
16 - APPLY 12-INCH WHITE CHEVRON STRIPES 10' C-C.
17 - APPLY YELLOW "XING", "SLOW", "SCHOOL" PAVEMENT MARKING PER CALTRANS STANDARD PLAN A24D.
18 - REMOVE CONFLICTING STRIPING/ MARKING BY SANDBLASTING.

- 19 - APPLY 6-INCH YELLOW MEDIAN ISLAND STRIPE LINE PER CALTRANS STANDARD PLAN A20B, DETAIL 29.
20 - APPLY 12-INCH YELLOW LADDER CROSSWALK PER CALTRANS STANDARD PLAN A24F.
21 - PAINT YELLOW CURB.
22 - APPLY YIELD LINE PAVEMENT MARKING PER CALTRANS STANDARD PLAN A24G.

SIGN LEGEND:

Sign legend showing various traffic signs and their dimensions: BIKE LANE, BEGIN/END, R4-7, L-1(CA), W1-6, W1-7, W16-7P, W16-9P, R2-1(25), W1-8, R81(CA), R81B(CA), R4-11, R26(CA), R26(S)(CA), W8-2, W3-1, N-1(CA), SW24-2(CA), SW24-3(CA), R1-5, W1-1, W13-1P, R1-1, R4-11, R26(CA), R26(S)(CA), W8-2, W3-1, N-1(CA), SW24-2(CA), SW24-3(CA), R1-5. Includes a north arrow and graphic scale.

Table with columns for MARK, REVISIONS, and DATE. Includes a vertical label 'FILE NO. 497700-010 & 497850-010' and 'SEE ABOVE RIGHT MATCHLINE STA. 22+00' and 'MATCHLINE STA. 32+00 SEE SHEET 12'.

PLANS PREPARED UNDER THE SUPERVISION OF: KOA LOCHNER COMPANY, 3190 C. Shelby Street, Ontario, California 91764. Tel: (909) 890-9693, Fax: (909) 890-9694. GIUSEPPE S. CANZONIERI, 4/15/2024 DATE.



Table for FIELD CHANGES with columns for MARK, CHANGES, NO CHANGES, RESIDENT ENGINEER, and DATE.

SAN BERNARDINO COUNTY DEPARTMENT OF PUBLIC WORKS. DESIGNED BY: RP, DRAWN BY: WG, CHECKED BY: AA, RECOMMENDED BY: ANTHONY PHAM, P.E., ENGINEERING MANAGER, TRAFFIC DIVISION, 5/16/2024 DATE. APPROVED BY: GRANT MANN, P.E., DEPUTY DIRECTOR, 5/17/24 DATE.

SIGNING AND STRIPING PLAN LITTLE THIRD ST AND LITTLE TIPPECANOE AVE SAN BERNARDINO AREA. J.L. REF. 12034, W.O. NO. H15122, PLAN SCALE 1" = 40', SHT. NO. 14, TOT. SHT.'S. 15.

SIGNING AND STRIPING NOTES:

- 1- REMOVE EXISTING SIGN AND POST.
2- RELOCATE EXISTING SIGN AND POST PER CA MUTCD 2014, FIG 2A-2(CA).
3- APPLY 6-INCH WHITE EDGE LINE STRIPE PER CALTRANS STANDARD PLAN A20B, DETAIL 27B.
4- APPLY WHITE "STOP", "AHEAD", "PED", "XING" PAVEMENT MARKING PER CALTRANS STANDARD PLAN A24D.
5- REMOVE SIGN.
6- APPLY 6-INCH DOUBLE YELLOW CENTERLINE PER CALTRANS STANDARD PLAN A20A, DETAIL 22.
7- FURNISH AND INSTALL SIGN AND POST PER CA MUTCD 2014, FIG 2A-2(CA)
8- APPLY 6-INCH WHITE BIKE LANE LINE PER CALTRANS STANDARD PLAN A20D, DETAIL 39.
9- APPLY 6-INCH WHITE BIKE INTERSECTION LINE PER CALTRANS STANDARD PLAN A20D, DETAIL 39A.
10- APPLY WHITE BIKE LANE ARROW PAVEMENT MARKING PER CALTRANS STANDARD PLAN A24A.
11- APPLY WHITE PAVEMENT BIKE SYMBOL WITH PERSON MARKING PER CALTRANS STANDARD PLAN A24C.
12- APPLY WHITE SHARED ROADWAY BICYCLE PAVEMENT MARKING PER CALTRANS STANDARD PLAN A24C.
13- INSTALL SIGN.
14- APPLY 12-INCH WHITE LADDER CROSSWALK PER CALTRANS STANDARD PLAN A24F.
15- PAINT RED CURB.
16- APPLY 12-INCH WHITE CHEVRON STRIPES 10' C-C.
17- APPLY YELLOW "XING", "SLOW", "SCHOOL" PAVEMENT MARKING PER CALTRANS STANDARD PLAN A24D.
18- REMOVE CONFLICTING STRIPING/ MARKING BY SANDBLASTING.
19- APPLY 6-INCH YELLOW MEDIAN ISLAND STRIPE LINE PER CALTRANS STANDARD PLAN A20B, DETAIL 29.
20- APPLY 12-INCH YELLOW LADDER CROSSWALK PER CALTRANS STANDARD PLAN A24F.
21- PAINT YELLOW CURB.
22- APPLY YIELD LINE PAVEMENT MARKING PER CALTRANS STANDARD PLAN A24G.

TRAFFIC CONTROL GENERAL NOTES

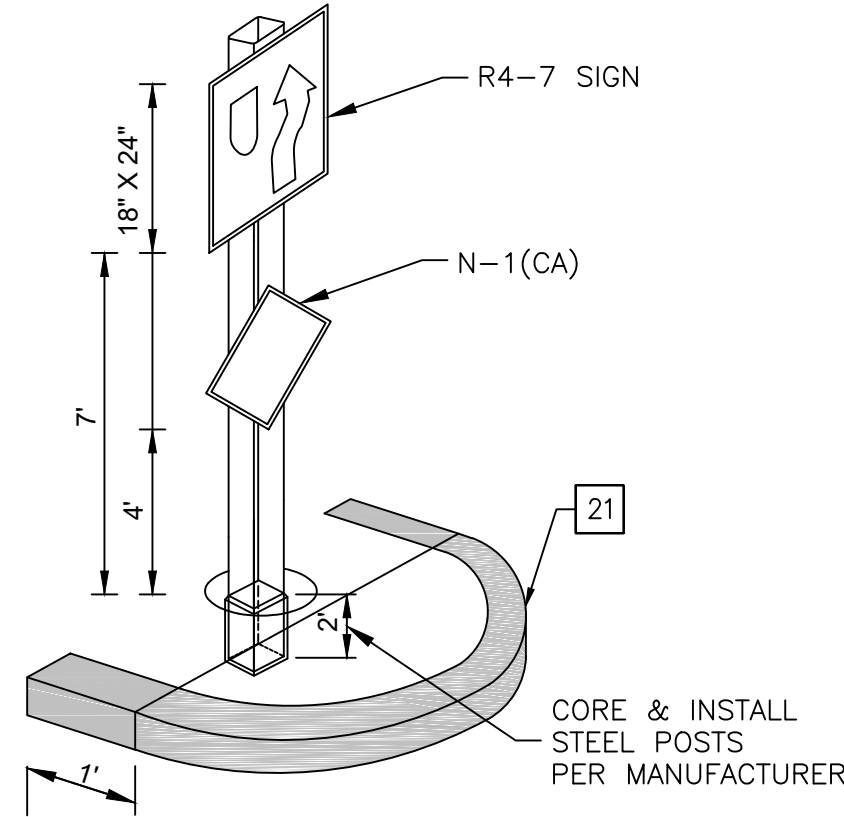
- 1. ALL SIGNING, STRIPING AND PAVEMENT MARKINGS SHALL BE IN CONFORMANCE WITH THE CALIFORNIA MUTCD LATEST EDITION.
2. ALL STRIPING AND PAVEMENT MARKINGS SHALL BE PAINTED IN CONFORMANCE WITH THE CALTRANS 2018 STANDARD PLANS (DATED MAY 31, 2018).
3. ALL STRIPING (LONG LINE) AND PAVEMENT MARKINGS SHALL BE RETROREFLECTIVE PAINT.
4. ALL SIGNS SHALL BE OF HIGH INTENSITY (FHWA TYPE III/IV) RETROREFLECTIVE SHEETING EXCEPT:
A. STOP SIGNS SHALL BE DIAMOND GRADE (FHWA TYPE VII IN RURAL SETTINGS AND TYPE IX IN URBAN SETTINGS) RETROREFLECTIVE SHEETING.
B. "NO PARKING" SIGNS SHALL BE OF SUPER ENGINEERING GRADE (FHWA TYPE II) RETROREFLECTIVE SHEETING.
C. SCHOOL SIGNS SHALL BE OF DIAMOND GRADE (FHWA TYPE IX) FLUORESCENT YELLOW-GREEN (FYG) RETROREFLECTIVE SHEETING.
D. STREET NAME MARKERS SHALL BE OF DIAMOND GRADE (FHWA TYPE IX) RETROREFLECTIVE SHEETING AND CONFORM TO COUNTY STANDARD 303.
E. CONSTRUCTION SIGNS SHALL BE OF DIAMOND GRADE (FHWA TYPE IX) FLUORESCENT ORANGE RETROREFLECTIVE SHEETING.
5. ALL DELINEATORS, CHANNELIZERS, AND OBJECT MARKERS SHALL BE OF FHWA TYPE VII RETROREFLECTIVE SHEETING.
6. SIGNS SHALL BE MOUNTED ON METAL POSTS SIMILAR TO COUNTY STANDARDS 303(A) AND 303(B).
7. ALL CONFLICTING STRIPING AND PAVEMENT MARKINGS SHALL BE REMOVED BY THE CONTRACTOR. REMOVAL OF EXISTING TRAFFIC STRIPES AND PAVEMENT MARKINGS SHALL BE BY MECHANICAL MEANS IN CONFORMANCE WITH SCAQMD RULE 1140. PAINTING OVER OR "BLACKING OUT" SHALL NOT BE ACCEPTED. THE CONTRACTOR SHALL OBTAIN APPROVAL FROM THE ENGINEER ON THE FINAL METHOD OF REMOVAL PRIOR TO PERFORMING THE WORK.
8. ALL CONFLICTING SIGNS SHALL BE REMOVED, RELOCATED, OR COVERED BY THE CONTRACTOR. RELOCATABLE SIGNS SHALL BE INSTALLED AS SPECIFIED ON THE PLANS OR AS DIRECTED BY COUNTY REPRESENTATIVE.
9. ALL UNPROTECTED LOCATIONS RESULTING IN ISOLATED ABRUPT DEPRESSIONS OR ELEVATED OBJECTS (I.E. CATCH BASINS, HEADWALLS, POWER POLES, END TREATMENT OF ASPHALT DIKES AND CONCRETE CURBS) SHALL BE PROTECTED BY DELINEATORS OR BARRIERS PER THE CALIFORNIA MUTCD LATEST EDITION.
10. ALL EXISTING SIGNING, STRIPING AND PAVEMENT MARKINGS (I.E. CROSS STREET STOP, STOP LIMIT LINE, AND CROSSWALK PAVEMENT MARKINGS) NOT SHOWN ON PLANS, IF REMOVED/OBLITERATED, SHALL BE REPLACED/RESTORED OF SAME KIND, AND IN CONFORMANCE WITH THE CALIFORNIA MUTCD LATEST EDITION.
11. THE CONTRACTOR SHALL NOTIFY COUNTY REPRESENTATIVE TO SCHEDULE A FINAL REVIEW (WALK THROUGH) WITH TRAFFIC DIVISION PERSONNEL FOR APPROVAL OF TRAFFIC CONTROL DEVICES PRIOR TO PROJECT ACCEPTANCE.

SIGN LEGEND:

Grid of traffic signs including: BIKE LANE, BEGIN, END, R4-7, W11-2, W1-1, R1-5, STOP, MAY USE FULL LANE, NO STOPPING ANY TIME, DIP, 25 MPH, W16-7P, W16-9P, W1-6, W1-7, R2-1(25), SW24-2(CA), SW24-3(CA), W3-1, N-1(CA), L-1(CA).

LEGEND:

Legend for symbols: REMOVE (STOP sign), EXISTING (STOP sign), PROPOSED (STOP sign), PAVEMENT MARKING, ROADSIDE SIGN, TRAFFIC STRIPE OR MARKING.



MEDIAN NOSE DETAIL 1 NTS

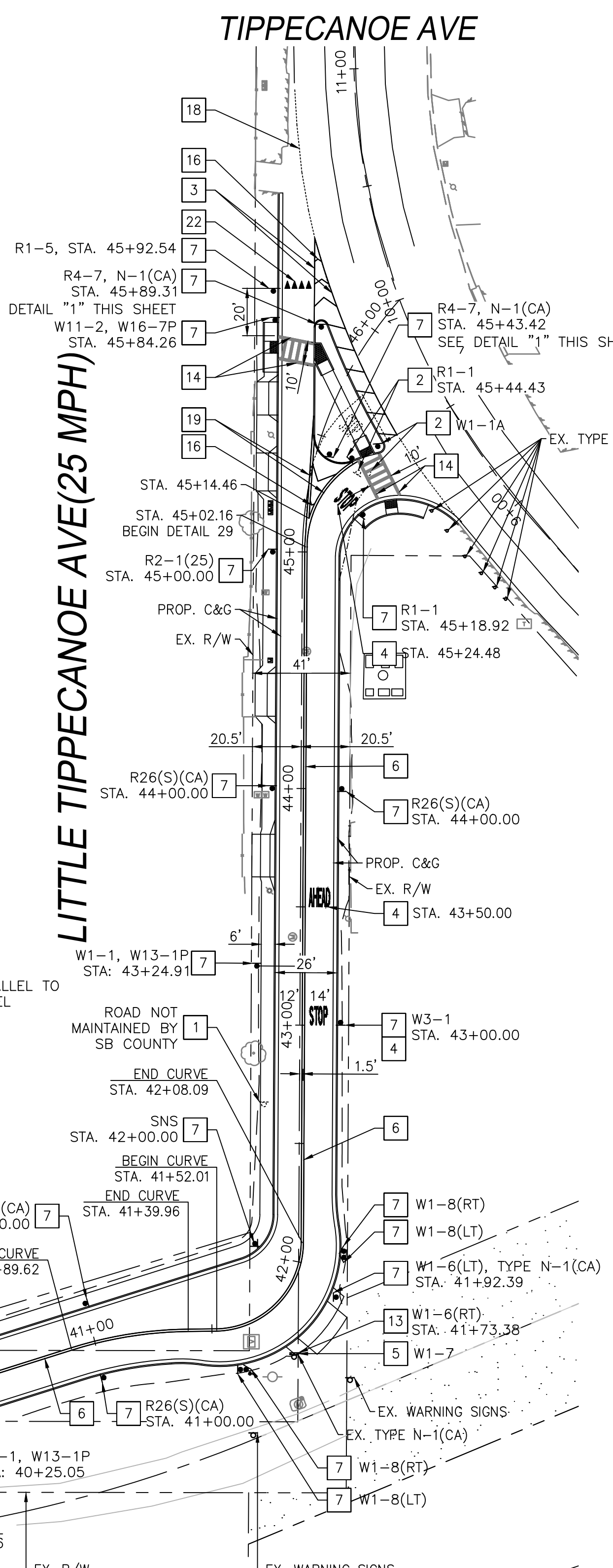
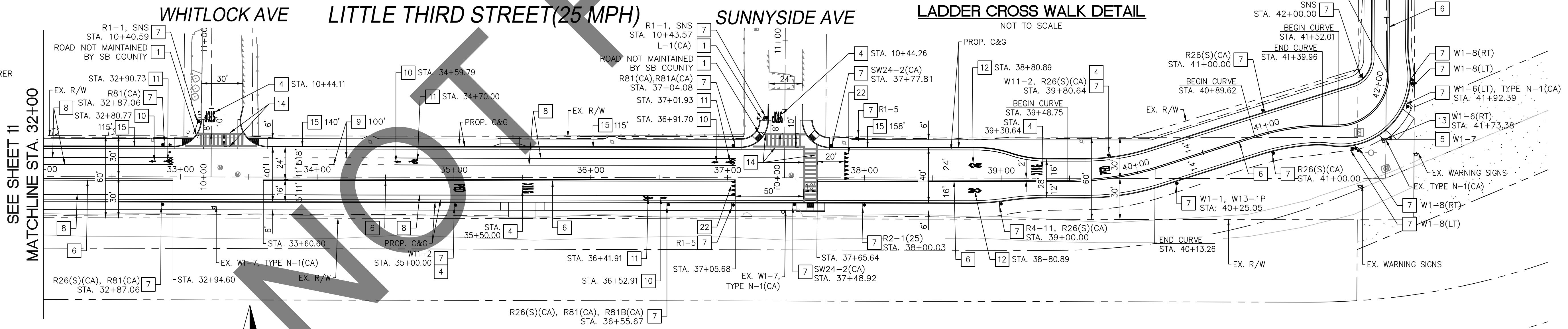
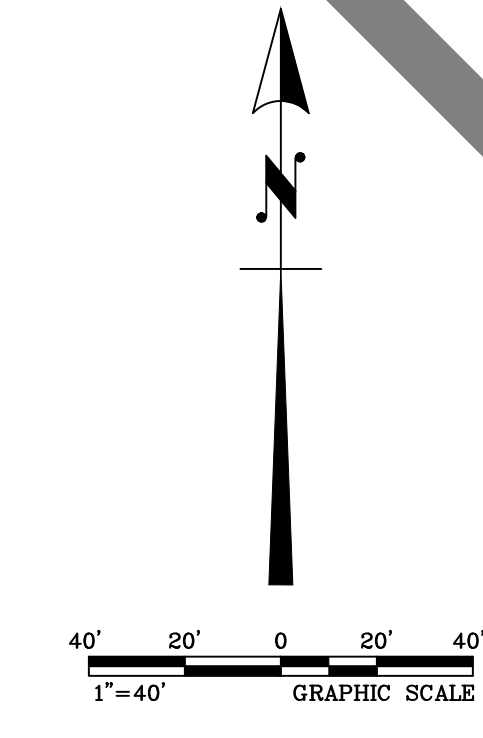


Table with columns: MARK, REVISIONS, APPR., DATE.

Table with columns: MARK, REVISIONS, APPR., DATE.

FILE NO. 497700-010 & 497850-010



PLANS PREPARED UNDER THE SUPERVISION OF: KOA LOCHNER COMPANY, 3190 C. Shelby Street, Ontario, California 91764. GIUSEPPE S. CANZONIERI, 4/15/2024 DATE.

REGISTERED PROFESSIONAL ENGINEER: GIUSEPPE S. CANZONIERI, No. C79006, CIVIL, STATE OF CALIFORNIA.

Table for FIELD CHANGES with columns: MARK, CHANGES, NO CHANGES, RESIDENT ENGINEER, DATE.

SAN BERNARDINO COUNTY DEPARTMENT OF PUBLIC WORKS. DESIGNED BY: RP, DRAWN BY: WG, CHECKED BY: AA, RECOMMENDED BY: ANTHONY PHAM, P.E. 5/16/2024. APPROVED BY: LEI LI, P.E. SUPERVISING ENGINEER, 5/16/2024.

Table for SIGNING AND STRIPING: LITTLE THIRD ST AND LITTLE TIPPECANOE AVE, SAN BERNARDINO AREA. J.L. REF. 12034, W.O. NO. H15122, PLAN SCALE 1" = 40', SHT. NO. 15, TOT. SHT'S. 15.