

DEMOLITION NOTES

- 1 PROTECT IN PLACE ITEM NOTED PER PLAN.
- 2 REMOVE EXISTING PAVEMENT AND BASE MATERIAL.
- 3 REMOVE ITEM NOTED PER PLAN.

LEGEND

- EXISTING ASPHALT TO BE REMOVED
- EXISTING BROKEN ASPHALT TO BE REMOVED
- EXISTING CONCRETE TO REMAIN
- LIMITS OF DEMOLITION
- ADD-ALTERNATE #2 LIMITS OF WORK

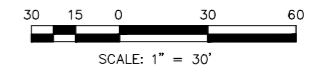
SHEET NOTES

1. FOR GENERAL NOTES, LEGEND, AND ABBREVIATIONS, SEE SHEET 1.
2. FOR NEW LOCATION OF RELOCATED ITEMS AND COORDINATION OF DEMOLITION, SEE PAVING PLANS, SHEETS 12 TO 21.
3. PROTECT-IN-PLACE ALL EXISTING UTILITIES UNLESS NOTED OTHERWISE.
4. CONTRACTOR TO INCLUDE DEMOLITION OF THIS PARKING LOT AS AN ADD ALTERNATE IN THE BID DOCUMENTS.
5. COORDINATE EXISTING LIGHT POLES WITH ELECTRICAL DRAWINGS.
6. PROTECT-IN-PLACE, RELOCATE OR RESET AS NECESSARY ALL EXISTING PORTABLE TRAFFIC CONTROL DEVICES THAT MAY OR WILL BE IMPACTED BY THE WORK UNLESS NOTED OTHERWISE.

NOTE

KINDER MORGAN'S CALNEV PIPELINE HAS AN EXISTING 8" HIGH PRESSURE FUEL LINE TRAVERSING THE SITE, CONTRACTOR SHALL HAVE A COPY OF THE "GUIDELINES FOR DESIGN AND CONSTRUCTION NEAR KINDER MORGAN OPERATED FACILITIES" DOCUMENT AND NOTIFY KINDER MORGAN FOR COORDINATION OF REQUIREMENTS PRIOR TO CONSTRUCTION, LINE SHALL BE CLEARLY INDICATED IN THE FIELD AND NO EXCAVATION SHALL OCCUR WITHIN 30 FEET OF THE PIPELINE WITHOUT A KINDER MORGAN INSPECTOR PRESENT.

NOT FOR BID



Underground Service Alert

Call: TOLL FREE
1-800-227-2600

TWO WORKING DAYS BEFORE YOU DIG

BENCHMARK
NATIONAL GEODETIC SURVEY BENCHMARK

DESIGNATION: RF 51
 PD: EV9108
 DATUM: NAVD 88
 ELEVATION: 1064.3 FEET

DESCRIPTION: 0.5 KM SOUTHWEST ALONG PALM AVENUE FROM ITS JUNCTION WITH INTERSTATE HIGHWAY 215 AND HIGHWAY 205, THENCE 0.5 KM SOUTHWESTERLY ALONG INSTITUTION ROAD 23.5 M (77.1 FT) N OF THE CENTERLINE OF THE ROAD 6.0 M (19.7 FT) E OF THE CENTER OF A TRACK ROAD 1.8 M (5.9 FT) W OF A UTILITY POLE NUMBER 1891621E 0.5 M (1.6 FT) S OF A WITNESS POST 0.3 M (1.0 FT) ABOVE THE ROAD 0.2 M (0.7 FT) BELOW THE GROUND SURFACE.

PREPARED BY:

801 VIA MEMONTE SUITE 400 OAKLAND, CA 94764 PROJECT # 22006394.00

PH 909.477.2915 FAX 909.477.2916 www.imeg.com

JOHN M. THOMPSON RCE NAME C82557 RCE No. 11/07/23 DATE

MARK	REVISIONS	APPR	DATE

SAN BERNARDINO COUNTY PROJECT AND FACILITIES MANAGEMENT DEPARTMENT

RECOMMENDED BY: _____

APPROVED BY: _____

ELSY BANKS PROJECT MANAGER III DATE _____

SAN BERNARDINO COUNTY SHERIFF'S DEPARTMENT

EMERGENCY VEHICLE OPERATIONS CENTER

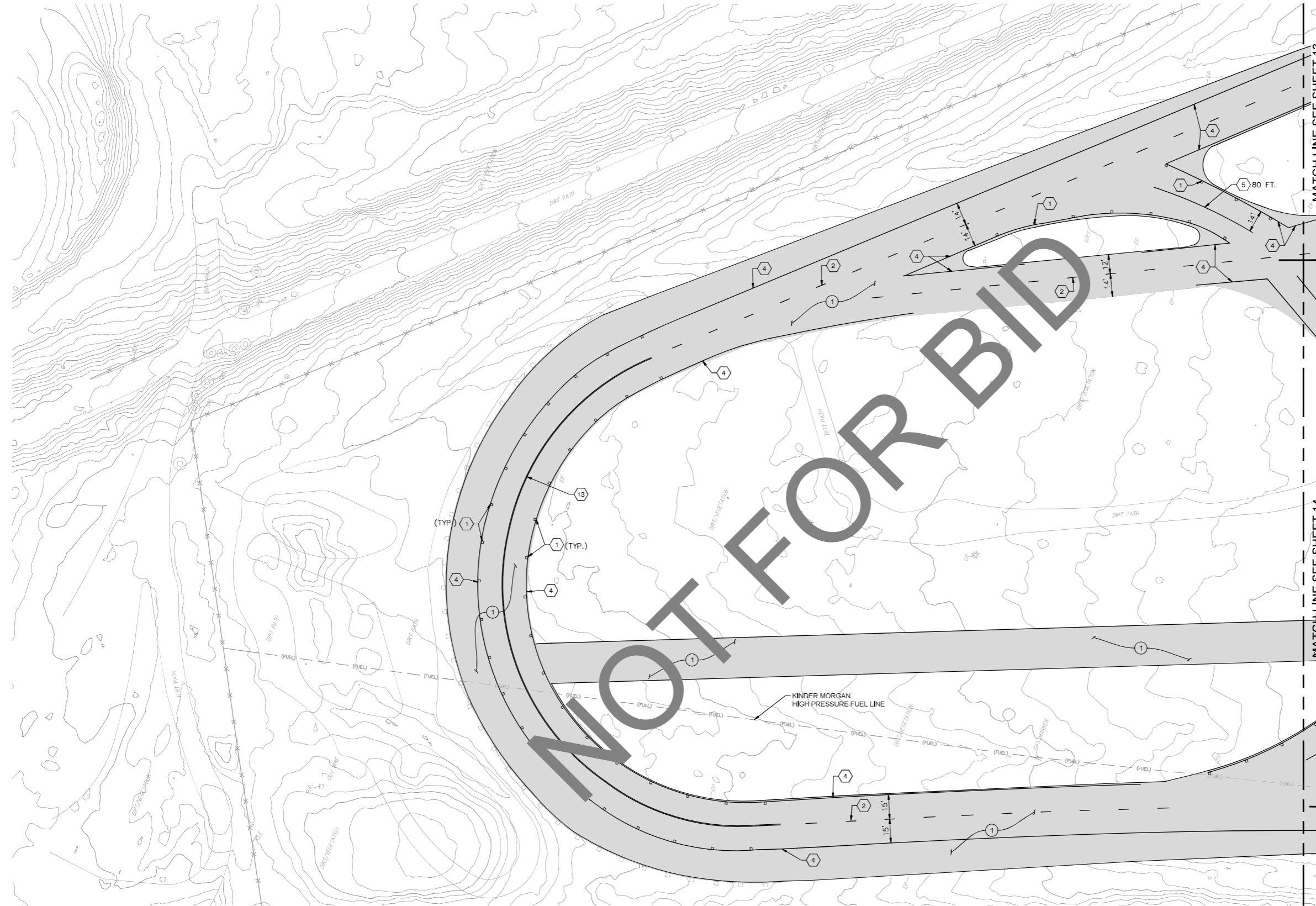
ASPHALT & LIGHTING REPLACEMENT PROJECT NO. 10.10.1222

DEMOLITION PLAN

ROAD NO. _____

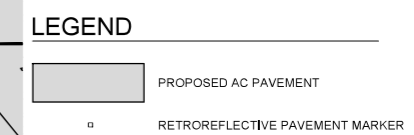
FILE NO. _____

SHEET 11 OF 44



- ### SIGNING AND STRIPING NOTES
- 1 INSTALL TWO-WAY YELLOW RETRO REFLECTIVE PAVEMENT MARKER PER CALTRANS STD. PLAN A20B, DETAIL 25A ON SHEET 32.
 - 2 PAINT YELLOW CENTERLINE PER CALTRANS STD. PLAN A20A, DETAIL 1, ON SHEET 32.
 - 4 PAINT WHITE EDGE LINES PER CALTRANS STD. PLAN A20B, DETAIL 27B ON SHEET 32.
 - 5 PAINT 6-INCH WIDE SOLID YELLOW LINE.
 - 13 PAINT DOUBLE YELLOW CENTERLINE PER CALTRANS STD. PLAN A20A, DETAIL 21 ON SHEET 32.

- ### PAVING CONSTRUCTION NOTES
- 1 CONSTRUCT 4" ASPHALT CONCRETE PAVEMENT OVER 5" AGGREGATE BASE OVER COMPACTED SUBGRADE PER RECOMMENDATIONS OF THE GEOTECHNICAL REPORT. CONSTRUCT EDGE OF PAVEMENT PER APPLICABLE CONDITION, SEE DETAIL 2 ON SHEET 33.



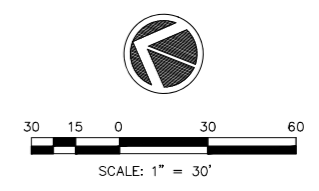
- ### SHEET NOTES
- 1. FOR GENERAL NOTES, LEGEND, AND ABBREVIATIONS, SEE SHEET 1.
 - 2. FOR CONSTRUCTION DETAILS, SEE SHEETS 32 AND 33.
 - 3. FOR GRADING PLANS, SEE SHEETS 22 TO 31.
 - 4. FOR SITE LIGHTING IMPROVEMENTS, SEE ELECTRICAL PLANS - SHEETS 34 TO 39.

NOTE

KINDER MORGAN'S CALNEV PIPELINE HAS AN EXISTING 8" HIGH PRESSURE FUEL LINE TRAVERSING THE SITE. CONTRACTOR SHALL HAVE A COPY OF THE "GUIDELINES FOR DESIGN AND CONSTRUCTION NEAR KINDER MORGAN OPERATED FACILITIES". DOCUMENT AND NOTIFY KINDER MORGAN FOR COORDINATION OF REQUIREMENTS PRIOR TO CONSTRUCTION. LINE SHALL BE CLEARLY INDICATED IN THE FIELD AND NO EXCAVATION SHALL OCCUR WITHIN 30 FEET OF THE PIPELINE WITHOUT A KINDER MORGAN INSPECTOR PRESENT.

MATCH LINE SEE SHEET 14

MATCH LINE SEE SHEET 13



Underground Service Alert

 Call: TOLL FREE
 1-800-227-2600
 TWO WORKING DAYS BEFORE YOU DIG

BENCHMARK
 NATIONAL GEODETIC SURVEY BENCHMARK
 DESIGNATION: RF 51
 POINT: EV9108
 DATUM: NAVD 83
 ELEVATION: 1956.43 FEET
 DESCRIPTION: 0.6 KM SOUTHWEST ALONG PALM AVENUE FROM ITS JUNCTION WITH INTERSTATE HIGHWAY 215 AND HIGHWAY 206, THENCE 0.9 KM SOUTHWESTERLY ALONG INSTITUTION ROAD 23.5 M (77.1 FT) N OF THE CENTERLINE OF THE ROAD 62.0 M (171 FT) E OF THE CENTER OF A TRUCK ROAD 1.8 M (5.9 FT) W OF A UTILITY POLE NUMBER 1891621E (0.3 M (1.0 FT) S OF A WITNESS POST 0.3 M (1.0 FT) ABOVE THE ROAD 0.2 M (0.7 FT) BELOW THE GROUND SURFACE.

PREPARED BY:

 801 VIA PIEMONTE SUITE 400
 OAKLAND, CA 94764
 PROJECT # 22006394.00
 PH 909.477.6915
 FAX 909.477.6916
 www.imeg.com
 JOHN M. THOMPSON
 RCE NAME
 C82557
 RCE NO.
 11/07/23
 DATE



MARK	REVISIONS	APPR	DATE

SAN BERNARDINO COUNTY
PROJECT AND FACILITIES MANAGEMENT DEPARTMENT
 RECOMMENDED BY: _____
 APPROVED BY: _____
 ELSY BANKS
 PROJECT MANAGER III

SAN BERNARDINO COUNTY
SHERIFF'S DEPARTMENT
EMERGENCY VEHICLE OPERATIONS CENTER
 ASPHALT & LIGHTING REPLACEMENT
 PROJECT NO. 10.10.1222
PAVING AND SIGNING & STRIPING PLAN

ROAD NO.
FILE NO.
SHEET 12 OF 44

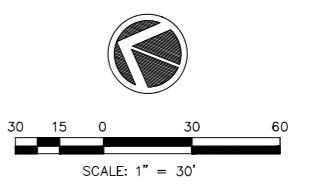


- SIGNING AND STRIPING NOTES**
- 2 PAINT YELLOW CENTERLINE PER CALTRANS STD. PLAN A20A, DETAIL 1 ON SHEET 32.
 - 3 PAINT WHITE LANE LINE PER CALTRANS STD. PLAN A20A, DETAIL 8 ON SHEET 32.
 - 4 PAINT WHITE EDGELINES PER CALTRANS STD. PLAN A20B, DETAIL 27B ON SHEET 32.
 - 5 PAINT 6-INCH WIDE SOLID YELLOW LINE.
 - 6 PAINT 6-INCH WIDE SOLID WHITE LINE.

- PAVING CONSTRUCTION NOTES**
- 1 CONSTRUCT 4" ASPHALT CONCRETE PAVEMENT OVER 5" AGGREGATE BASE OVER COMPACTED SUBGRADE PER RECOMMENDATIONS OF THE GEOTECHNICAL REPORT. CONSTRUCT EDGE OF PAVEMENT PER APPLICABLE CONDITION, SEE DETAIL 2 ON SHEET 33.
 - 2 CONSTRUCT 6-1/2" PCC PAVEMENT OVER COMPACTED SUB-GRADE PER DETAIL 1 ON SHEET 33 AND RECOMMENDATIONS OF THE GEOTECHNICAL REPORT.
 - 3 CONSTRUCT TRANSITION CURBS FROM 0" TO JOIN EXISTING HEIGHT CURBS PER DETAIL 4 ON SHEET 33.

- LEGEND**
- PROPOSED ASPHALT PAVEMENT
 - PROPOSED CONCRETE PAVEMENT
 - EXISTING CONCRETE PAVEMENT TO REMAIN

- SHEET NOTES**
- 1. FOR GENERAL NOTES, LEGEND, AND ABBREVIATIONS, SEE SHEET 1.
 - 2. FOR CONSTRUCTION DETAILS, SEE SHEETS 32 AND 33.
 - 3. FOR GRADING PLANS, SEE SHEETS 22 TO 31.
 - 4. FOR SITE LIGHTING IMPROVEMENTS, SEE ELECTRICAL PLANS - SHEETS 34 TO 39.



Underground Service Alert

 Call: TOLL FREE
 1-800-227-2600
 TWO WORKING DAYS BEFORE YOU DIG

BENCHMARK
 NATIONAL GEODETIC SURVEY BENCHMARK
 DESIGNATION: RF 51
 PD: EV9108
 DATUM: NAVD 88
 ELEVATION: 1064.3 FEET
 DESCRIPTION: 0.6 KM SOUTHWEST ALONG PALM AVENUE FROM ITS JUNCTION WITH INTERSTATE HIGHWAY 215 AND HIGHWAY 206, THENCE 0.9 KM SOUTHWESTERLY ALONG INSTITUTION ROAD 23.5 M (77.1 FT) N OF THE CENTERLINE OF THE ROAD 62 M (197 FT) E OF THE CENTER OF A TRACK ROAD 1.0 M (3.2 FT) W OF A UTILITY POLE NUMBER 1891621E 0.4 M (1.2 FT) S OF A WITNESS POST 0.3 M (1.0 FT) ABOVE THE ROAD 0.2 M (0.7 FT) BELOW THE GROUND SURFACE.

PREPARED BY:

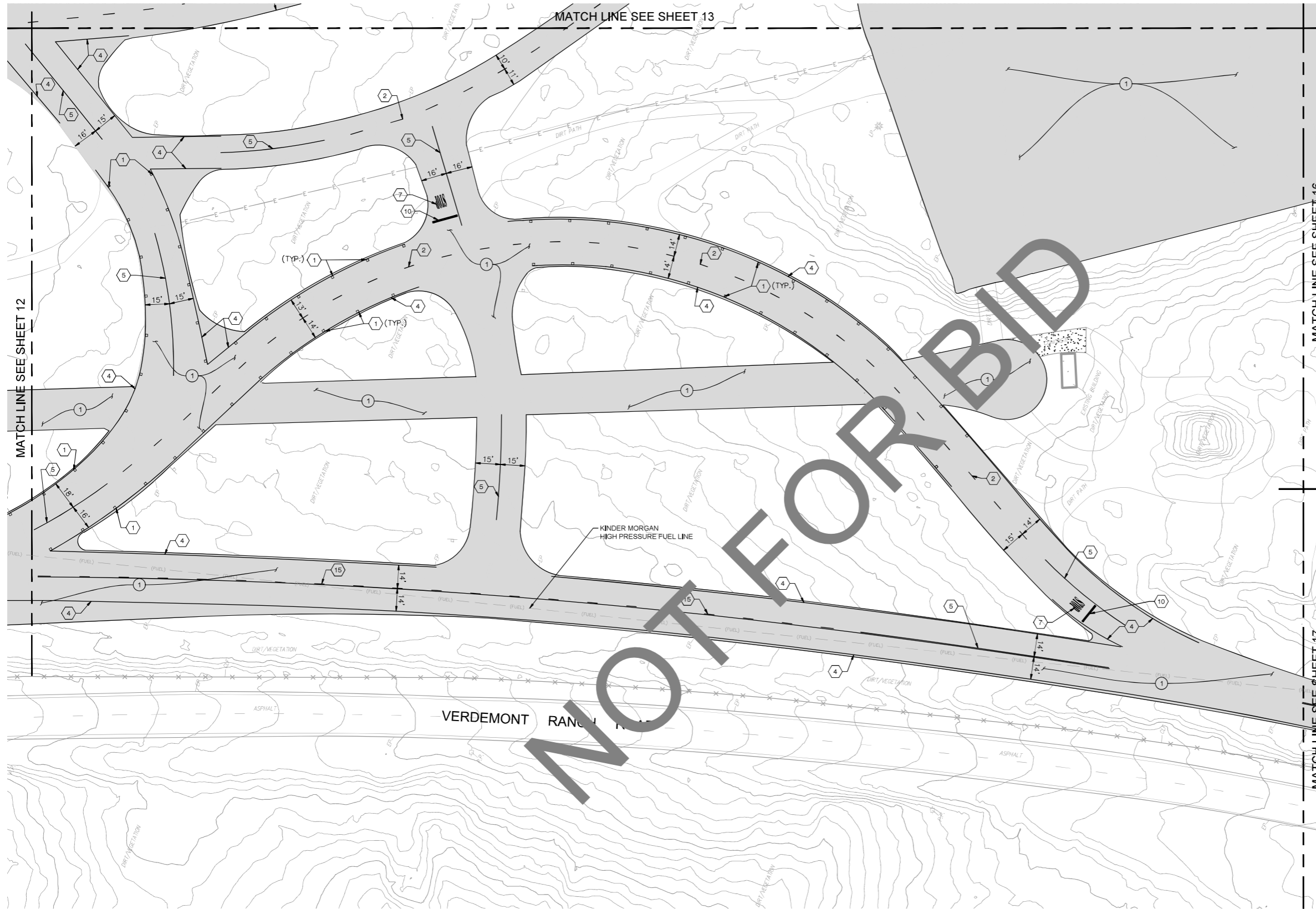
 801 VIA PIEMONTE SUITE 600 ONTARIO, CA 91764 PROJECT # 22006394.00
 PH 909.477.6915 FAX 909.477.6916 www.imegcorp.com
 JOHN M. THOMPSON RCE NAME C82557 RCE No. 11/07/23 DATE

MARK	REVISIONS	APPR	DATE

SAN BERNARDINO COUNTY
 PROJECT AND FACILITIES MANAGEMENT DEPARTMENT
 RECOMMENDED BY: _____
 APPROVED BY: _____
 ELSY BANKS PROJECT MANAGER III DATE _____

SAN BERNARDINO COUNTY
 SHERIFF'S DEPARTMENT
 EMERGENCY VEHICLE OPERATIONS CENTER
 ASPHALT & LIGHTING REPLACEMENT
 PROJECT NO. 10.10.1222
 PAVING AND SIGNING &
 STRIPING PLAN

ROAD NO.
 FILE NO.
 SHEET 13 OF 44



- ### SIGNING AND STRIPING NOTES
- 1 INSTALL TWO-WAY YELLOW RETROREFLECTIVE PAVEMENT MARKER PER CALTRANS STD. PLAN A20B, DETAIL 25A ON SHEET 32.
 - 2 PAINT YELLOW CENTERLINE PER CALTRANS STD. PLAN A20A, DETAIL 1 ON SHEET 32.
 - 4 PAINT WHITE EDGELINES PER CALTRANS STD. PLAN A20B, DETAIL 27B ON SHEET 32.
 - 5 PAINT 6-INCH WIDE SOLID YELLOW LINE.
 - 7 PAINT 'STOP' PAVEMENT MARKING PER CALTRANS STD. PLAN A24D ON SHEET 32.
 - 10 PAINT 12-INCH WIDE SOLID WHITE LIMIT LINE PER CALTRANS STD. PLAN A24G ON SHEET 32.
 - 15 PAINT SOLID YELLOW AND BROKEN YELLOW CENTERLINE PER CALTRANS STD. PLAN A20A, DETAIL 15 ON SHEET 32.

- ### PAVING CONSTRUCTION NOTES
- 1 CONSTRUCT 4" ASPHALT CONCRETE PAVEMENT OVER 5" AGGREGATE BASE OVER COMPACTED SUBGRADE PER RECOMMENDATIONS OF THE GEOTECHNICAL REPORT. CONSTRUCT EDGE OF PAVEMENT PER APPLICABLE CONDITION, SEE DETAIL 2 ON SHEET 33.

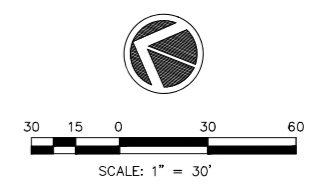
LEGEND

- PROPOSED ASPHALT PAVEMENT
- EXISTING CONCRETE PAVEMENT TO REMAIN
- RETROREFLECTIVE PAVEMENT MARKER

- ### SHEET NOTES
1. FOR GENERAL NOTES, LEGEND, AND ABBREVIATIONS, SEE SHEET 1.
 2. FOR CONSTRUCTION DETAILS, SEE SHEETS 32 AND 33.
 3. FOR GRADING PLANS, SEE SHEETS 22 TO 31.
 4. FOR SITE LIGHTING IMPROVEMENTS, SEE ELECTRICAL PLANS - SHEETS 34 TO 39.

NOTE

KINDER MORGAN'S CALNEV PIPELINE HAS AN EXISTING 8" HIGH PRESSURE FUEL LINE TRAVERSING THE SITE. CONTRACTOR SHALL HAVE A COPY OF THE "GUIDELINES FOR DESIGN AND CONSTRUCTION NEAR KINDER MORGAN OPERATED FACILITIES", DOCUMENT AND NOTIFY KINDER MORGAN FOR COORDINATION OF REQUIREMENTS PRIOR TO CONSTRUCTION. LINE SHALL BE CLEARLY INDICATED IN THE FIELD AND NO EXCAVATION SHALL OCCUR WITHIN 30 FEET OF THE PIPELINE WITHOUT A KINDER MORGAN INSPECTOR PRESENT.



Underground Service Alert

Call: TOLL FREE
1-800-227-2600

TWO WORKING DAYS BEFORE YOU DIG

BENCHMARK
NATIONAL GEODETIC SURVEY BENCHMARK

DESIGNATION: RF 51
 PD: EV9108
 DATUM: NAVD 88
 ELEVATION: 1064.3 FEET

DESCRIPTION: 0.5 KM SOUTHWEST ALONG PALM AVENUE FROM ITS JUNCTION WITH INTERSTATE HIGHWAY 215 AND HIGHWAY 206. THENCE 0.9 KM SOUTHWESTERLY ALONG INSTITUTION ROAD 23.5 M (77.1 FT) N OF THE CENTERLINE OF THE ROAD 62 M (197 FT) E OF THE CENTER OF A TRUCK ROAD 10.8 M (35.4 FT) W OF A UTILITY POLE. NUMBER 1891621E 0.5 M (1.6 FT) S OF A WITNESS POST 0.3 M (1.0 FT) ABOVE THE ROAD 0.2 M (0.7 FT) BELOW THE GROUND SURFACE.

PREPARED BY:

801 VIA PIEMONTE SUITE 400
 OAKLAND, CA 94764
 PROJECT # 22006394.00

PH 909.477.6915
 FAX 909.477.6916
 www.imeg.com

JOHN M. THOMPSON
 RCE NAME

C82557
 RCE NO.

11/07/23
 DATE

MARK	REVISIONS	APPR	DATE

SAN BERNARDINO COUNTY
 PROJECT AND FACILITIES MANAGEMENT DEPARTMENT

RECOMMENDED BY: _____

APPROVED BY: _____

ELBY BANKS
 PROJECT MANAGER III

DATE: _____

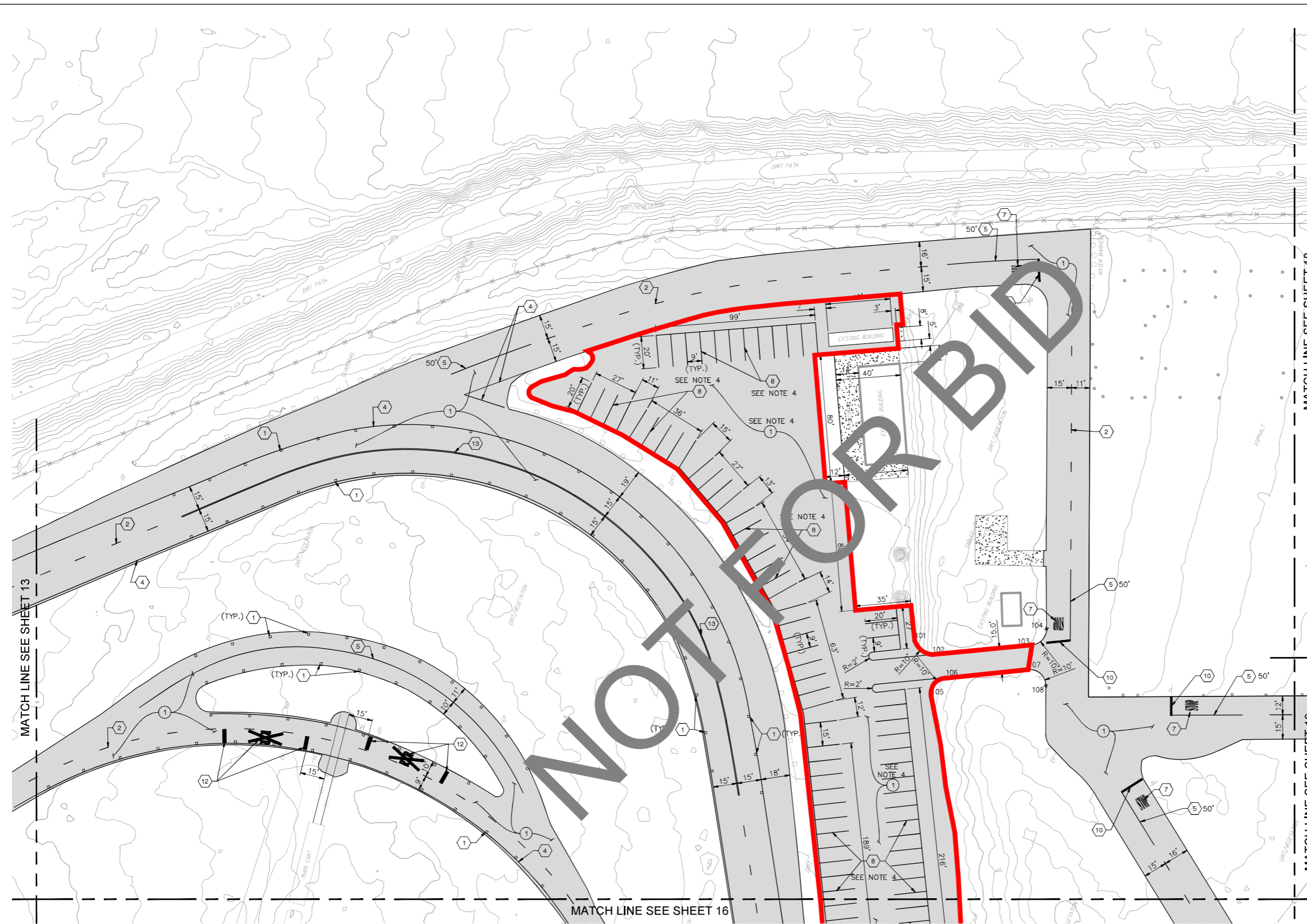
SAN BERNARDINO COUNTY
 SHERIFF'S DEPARTMENT

EMERGENCY VEHICLE OPERATIONS CENTER
 ASPHALT & LIGHTING REPLACEMENT
 PROJECT NO. 10.10.1222
 PAVING AND SIGNING &
 STRIPING PLAN

ROAD NO.

FILE NO.

SHEET 14 OF 44



- ### SIGNING AND STRIPING NOTES
- 1 INSTALL TWO-WAY YELLOW RETRO REFLECTIVE PAVEMENT MARKER PER CALTRANS STD. PLAN A20B, DETAIL 25A ON SHEET 32.
 - 2 PAINT YELLOW CENTERLINE PER CALTRANS STD. PLAN A20A, DETAIL 1 ON SHEET 32.
 - 4 PAINT WHITE EDGELINES PER CALTRANS STD. PLAN A20B, DETAIL 27B ON SHEET 32.
 - 5 PAINT 6-INCH WIDE SOLID YELLOW LINE.
 - 7 PAINT 'STOP' PAVEMENT MARKING PER CALTRANS STD. PLAN A24D ON SHEET 32.
 - 8 PAINT 4-INCH WIDE SOLID WHITE LINE.
 - 10 PAINT 12-INCH WIDE SOLID WHITE LIMIT LINE PER CALTRANS STD. PLAN A24G ON SHEET 32.
 - 12 PAINT RAILROAD WARNING MARKINGS PER CALTRANS STD. PLAN A24B ON SHEET 32.
 - 13 PAINT DOUBLE YELLOW CENTERLINE PER CALTRANS STD. PLAN A20A, DETAIL 21 ON SHEET 32.

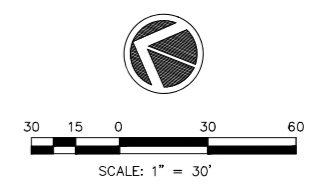
- ### PAVING CONSTRUCTION NOTES
- 1 CONSTRUCT 4" ASPHALT CONCRETE PAVEMENT OVER 5" AGGREGATE BASE OVER COMPACTED SUBGRADE PER RECOMMENDATIONS OF THE GEOTECHNICAL REPORT. CONSTRUCT EDGE OF PAVEMENT PER APPLICABLE CONDITION. SEE DETAIL 2 ON SHEET 33.

LEGEND

- PROPOSED ASPHALT PAVEMENT
- EXISTING CONCRETE PAVEMENT TO REMAIN
- RETROREFLECTIVE PAVEMENT MARKER
- ADD-ALTERNATE #1 LIMITS OF WORK

COORDINATES		
POINT #	NORTHING	EASTING
101	1889119.09	6748408.48
102	1889105.80	6748404.36
103	1889050.34	6748432.44
104	1889045.59	6748445.12
105	1889096.84	6748379.76
106	1889092.93	6748394.07
107	1889046.98	6748417.33
108	1889033.14	6748412.03

- ### SHEET NOTES
1. FOR GENERAL NOTES, LEGEND, AND ABBREVIATIONS, SEE SHEET 1.
 2. FOR CONSTRUCTION DETAILS, SEE SHEETS 32 AND 33.
 3. FOR GRADING PLANS, SEE SHEETS 22 TO 31.
 4. CONTRACTOR TO INCLUDE CONSTRUCTION OF THIS PARKING LOT AS AN ADD ALTERNATE IN THE BID DOCUMENTS.
 5. FOR SITE LIGHTING IMPROVEMENTS, SEE ELECTRICAL PLANS - SHEETS 34 TO 39.



Underground Service Alert

 Call: TOLL FREE
 1-800-227-2600
 TWO WORKING DAYS BEFORE YOU DIG

BENCHMARK
 NATIONAL GEODETIC SURVEY BENCHMARK
 DESIGNATION: RF 51
 PD: EV9108
 DATUM: NAVD 88
 ELEVATION: 190.43 FEET
 DESCRIPTION: 0.5 KM SOUTHWEST ALONG PALM AVENUE FROM ITS JUNCTION WITH INTERSTATE HIGHWAY 215 AND HIGHWAY 206, THENCE 0.5 KM SOUTHWESTERLY ALONG INSTITUTION ROAD 23.5 M (77.1 FT) N OF THE CENTERLINE OF THE ROAD 62 M (171 FT) E OF THE CENTER OF A TRACK ROAD 1.9 M (6.2 FT) W OF A UTILITY POLE NUMBER 1891621E 0.3 M (0.9 FT) S OF A WITNESS POST 0.3 M (1.0 FT) ABOVE THE ROAD 0.2 M (0.7 FT) BELOW THE GROUND SURFACE.

PREPARED BY:

 901 VIA PIEMONTE SUITE 400
 OAKLAND, CA 94764
 PROJECT # 22006394.00
 PH 908.477.8915
 FAX 908.477.2916
 www.imeg.com
 JOHN M. THOMPSON
 RCE NAME
 C82557
 RCE NO.
 11/07/23
 DATE

REGISTERED PROFESSIONAL ENGINEER

 JOHN MARK THOMPSON
 C 82557
 CIVIL
 STATE OF CALIFORNIA

MARK	REVISIONS	APPR	DATE

SAN BERNARDINO COUNTY
 PROJECT AND FACILITIES MANAGEMENT DEPARTMENT
 RECOMMENDED BY:

 APPROVED BY:

 ELSY BANKS
 PROJECT MANAGER III
 DATE: _____

SAN BERNARDINO COUNTY
 SHERIFF'S DEPARTMENT
 EMERGENCY VEHICLE OPERATIONS CENTER
 ASPHALT & LIGHTING REPLACEMENT
 PROJECT NO. 10.10.1222
 PAVING AND SIGNING &
 STRIPING PLAN

ROAD NO.
 FILE NO.
 SHEET 15 OF 44