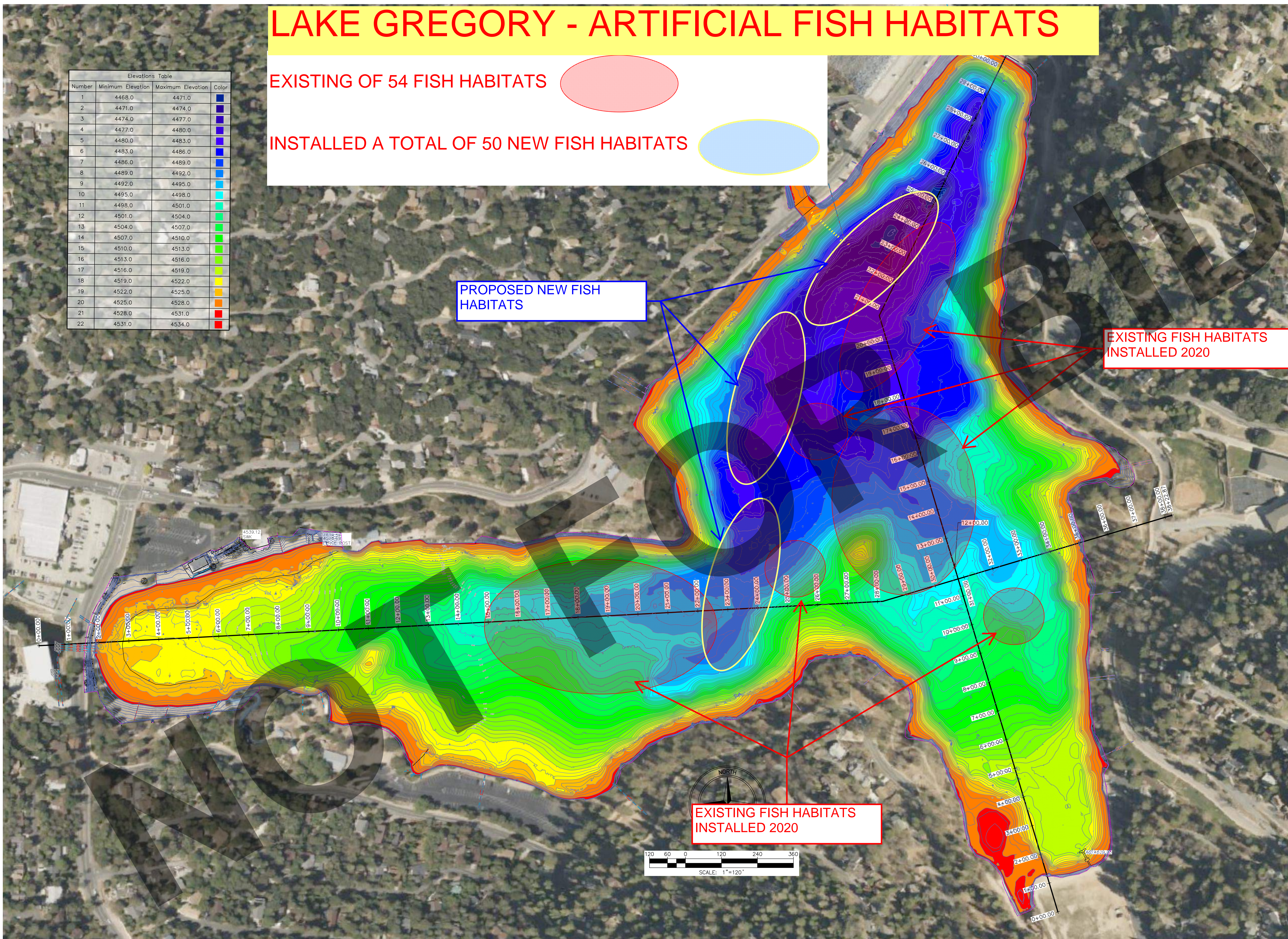


LAKE GREGORY - ARTIFICIAL FISH HABITATS

EXISTING OF 54 FISH HABITATS

INSTALLED A TOTAL OF 50 NEW FISH HABITATS

Elevations Table			
Number	Minimum Elevation	Maximum Elevation	Color
1	4468.0	4471.0	Blue
2	4471.0	4474.0	Dark Blue
3	4474.0	4477.0	Light Blue
4	4477.0	4480.0	Very Light Blue
5	4480.0	4483.0	Light Cyan
6	4483.0	4486.0	Light Green
7	4486.0	4489.0	Light Yellow
8	4489.0	4492.0	Yellow
9	4492.0	4495.0	Light Orange
10	4495.0	4498.0	Orange
11	4498.0	4501.0	Dark Orange
12	4501.0	4504.0	Red-Orange
13	4504.0	4507.0	Red
14	4507.0	4510.0	Dark Red
15	4510.0	4513.0	Dark Purple
16	4513.0	4516.0	Medium Purple
17	4516.0	4519.0	Light Purple
18	4519.0	4522.0	Light Blue
19	4522.0	4525.0	Light Cyan
20	4525.0	4528.0	Light Green
21	4528.0	4531.0	Light Yellow
22	4531.0	4534.0	Yellow



PROPOSED NEW FISH HABITATS

EXISTING FISH HABITATS INSTALLED 2020

EXISTING FISH HABITATS INSTALLED 2020

95% PROGRESS SET
NOT FOR CONSTRUCTION

UNDERGROUND SERVICE ALERT
Call: TOLL FREE
1-800-227-2600
OR
811
TWO WORKING DAYS BEFORE YOU DIG

BENCHMARK:
ELEVATIONS SHOWN HEREON ARE EXPRESSED IN THE U.S. SURVEY FEET AND ARE REFERENCED TO THE NORTH AMERICA VERTICAL DATUM OF 1988 (NAVD88) AND DEFINED LOCALLY USING THE ORTHOMETRIC HEIGHT FOR CORS STATION EWPP. SITE BENCHMARK AT POINT NO. 7000 DERIVED FROM STATIC OBSERVATIONS. ELEVATION = 4587.05'

BASIS OF BEARINGS:
BEARINGS SHOWN ON THIS MAP ARE REFERENCED TO THE CALIFORNIA COORDINATE SYSTEM, CCS83 (2011) EPOCH 2010.00, ZONE 05, DEFINED LOCALLY BY NGS PID'S EWPP, PS98, & P470 ACCORDING TO THE GEODETIC POSITIONS AS PUBLISHED BY NGS. ALL DISTANCES AND COORDINATES ARE REFERENCED TO CCS83 ZONE 05 GRID AND ARE EXPRESSED IN US SURVEY FOOT UNITS.

J. SMITH & T. MULI
33161 Camino Capistrano, Suite D, San Juan Capistrano, CA 92675
Phone: (949) 329.3639 · JSTMINC.COM
JONIS C. SMITH 058654 09/08/2023
PROFESSIONAL ENGINEER R.C.E. No. DATE

MARK	DATE	INITIAL	DESCRIPTION	APPR. DATE

PLANS APPROVED BY:
SAN BERNARDINO COUNTY - PUBLIC WORKS SPECIAL DISTRICTS

APPROVALS	ASSISTANT DIRECTOR	PROJECT MANAGER	OPS. DIVISION MANAGER	PM. DIVISION MANAGER	DATE

IMPROVEMENT PLANS
LAKE GREGORY SITEWIDE SEDIMENT MANAGEMENT PROJECT
SAN BERNARDINO COUNTY REGIONAL PARKS DEPARTMENT
CRESTLINE, CALIFORNIA
EXISTING CONDITION LAYOUT

DWG NO. XX.XX.XXXX
FILE NO. XXX-XXX
SHEET 2 OF 16

C:\Users\WJ11\OneDrive\Projects\1025 - Lake Gregory Sitewide Sediment Management - Project\1025-SHT-FLEX LARE LAYOUT.dwg 02/23/24 - 6:36pm Mulli Tim