

HP 200 Handhole Requirements

Scope HP 200.1 Handhole Requirements

The following tabulation shows the size and type of various handholes, manufacturers' names, an arbitrarily assigned item number, and SAP numbers. This item number will be the identification used when listed on the "List of Materials" on the working drawing.

Table HP 200-1: Concrete — Unit (Box and Cover) — Parkway

Item Number	Nominal Size (Inside)	Manufacturers' Numbers				SAP Number
		BES Products	Brooks Products ^{a/}	Christy Concrete Products ^{b/}	J&R Concrete Products	
HH-2 ^{b/c/}	10.5" x 17" x 24"	—	38PBB-36MBBE-36PBCC238	N09B-N09X12-N09T72	E3 1/2 PB, E3 1/2--PB-EXT, E3 1/2-C-ED	10117724
HH-6	17" x 30" x 24"	—	66MBB-66MBBE-66PBCC238	N36B-N36X12-N36T72	E6B-PB, E6B-(12")EXT, E6B-C-ED	10117326
HH-1 ^{c/ d/}	10.5" x 17" x 12"	C9E	36PBB-36PBCC238	N09B-N09T72	E3 1/2-PB, E3 1/2-C-ED	10117723
HH-3	13" x 24" x 12"	C30	38MBB-38PBCC238	N30B-N30T72	E5-2-PB, E5-2-C-ED	10117319
HH-4	13" x 24" x 24"	—	38MBB-38MBBE-38PBCC238	N30B-N30X12-N30T72	—	10117315
HH-5 ^{c/}	17" x 30" x 12"	C36	66MBB-66PBCC238	N36B-N36T72	E6B-PB, E6B-C-ED	10117322

^{a/} Brooks Products (formerly Carson-Brooks)

^{b/} Old Castle Enclosure Solutions is the parent company of Christy Concrete Products.

^{c/} Limited to streetlight use.

^{d/} Not approved for use on new construction.

Table HP 200-2: Plastic (HDPE) — Unit (Box and Cover) — Parkway

Item Number	Nominal Size (Inside)	Manufacturers' Numbers		SAP Number
		New Basis ^{a/}	Carson Industries ^{b/}	
HH-7 ^{c/ d/}	10.5" x 17" x 12"	SEA-141912-C012	141912-4HYE60AU0	10117728
HH-8	13" x 24" x 15"	SEA-132415-C012	132415-3BYE60GU0	10117725
HH-9	17" x 30" x 15"	SEA-173015-C020	173015-3BYE60GU0	10117726

^{a/} New Basis (formerly Associated Plastics)

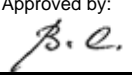
^{b/} Old Castle Enclosure Solutions is the parent company of Carson Industries (formerly Carson-Brooks)

^{c/} Limited to Streetlight Use

^{d/} Not approved for use on new construction

= For Reference Only

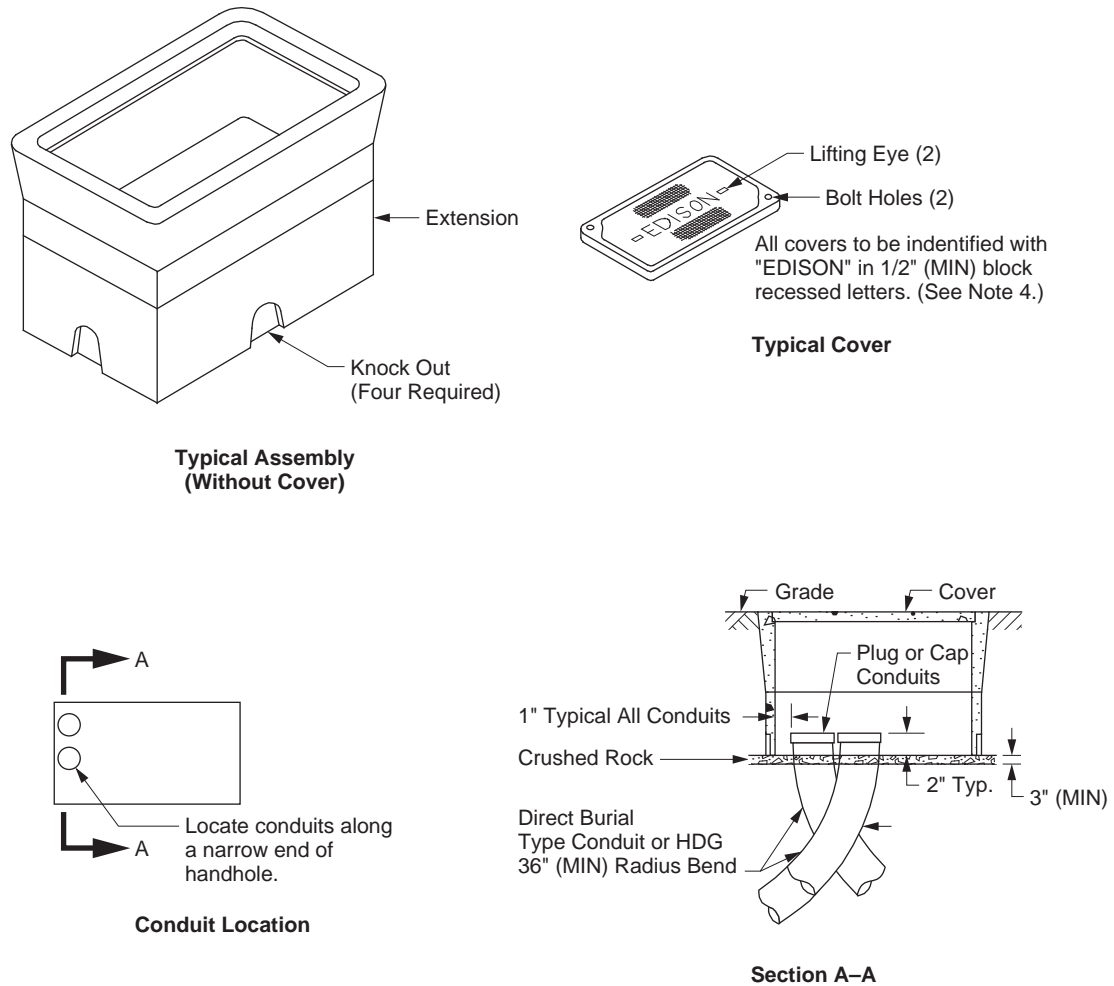
Lake Gregory Regional Park
Commerce – Prefab Restroom
Project #10.10.1397
Addendum #1 Enclosure #1A
6/18/24

Approved by: 	Handhole Requirements	HP 200
Effective Date: 10-24-2014	What's Changed? Parent company notes added. Sections made "For Reference Only."	Sheet 1 of 4
		UGS

HP 205 Typical Handhole Installation

Scope HP 205.1 Typical Handhole Installation

Figure HP 205-1: Typical Handhole Installation



Note(s):

1. See HP 200 for dimensions of various size handholes available.
2. Radius angle may be reduced to less than 90° providing the projected center line of the conduit clears handhole opening.
3. Two hold down devices to be supplied with each handhole.
4. Cover shall be identified with "EDISON" in minimum 2-inch letters or labels permanently secured to the lid.
5. For maintenance on 10-1/2" x 17" concrete handholes use swingbolt with SAP 10204721.

Lake Gregory Regional Park
Commerce – Prefab Restroom Project
#10.10.1397
Addendum #1 Enclosure #1B
6/18/24

Approved by: <i>B.C.</i>	Typical Handhole Installation	HP 205
Effective Date: 01-29-2016	What's Changed? Note 5 was added.	Sheet 1 of 1
		UGS