

JACKSON STREET
C STREET

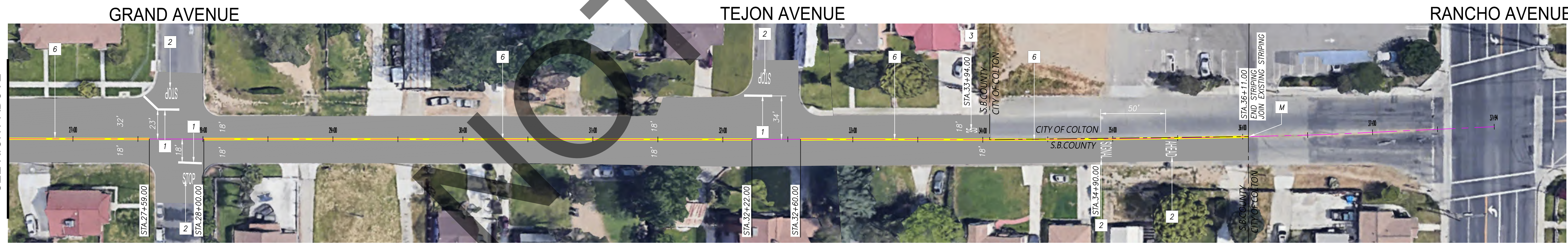
MATCHLINE, STA. 17+50.00
SEE LEFT BELOW



MATCHLINE, STA. 17+50.00
SEE RIGHT ABOVE

C STREET

MATCHLINE, STA. 26+50.00
SEE LEFT BELOW



MATCHLINE, STA. 26+50.00
SEE RIGHT ABOVE

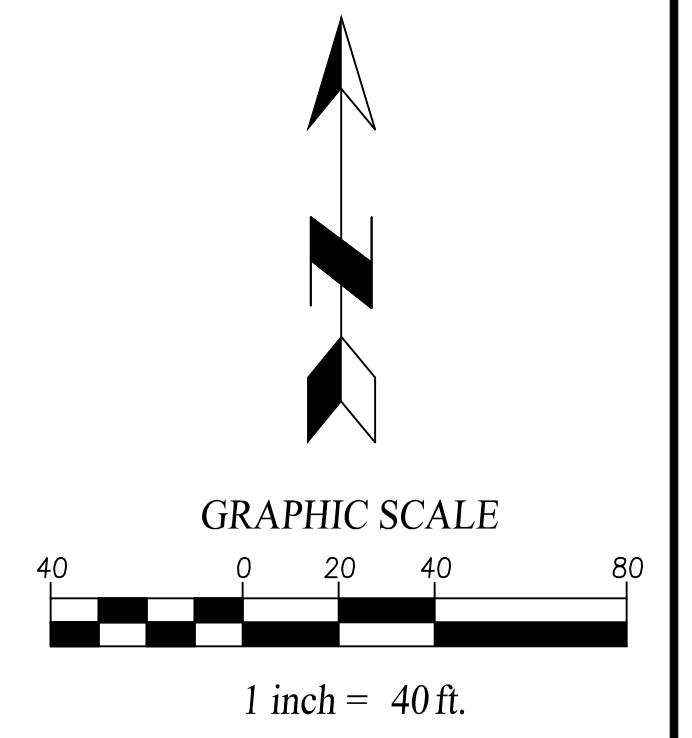
C STREET

STRIPING CONSTRUCTION NOTES

- 1 PAINT 12-INCH WHITE LIMIT LINE PER CALTRANS 2018 STD. PLAN A24E.
- 2 PAINT WHITE PAVEMENT MARKING LEGEND PER CALTRANS 2018 STD. PLAN A24D, (TYPE PER PLAN).
- 3 PAINT WHITE PAVEMENT MARKING LEGEND PER CALTRANS 2018 STD. PLAN A24C, (TYPE PER PLAN).
- 4 PAINT TYPE IV LEFT OR RIGHT TURN ARROW PAVEMENT MARKING PER CALTRANS 2018 STD. PLAN A24A.
- 5 PAINT TYPE VI LANE DROP PAVEMENT MARKING PER CALTRANS 2018 STD. PLAN A24A.
- 6 PAINT DOUBLE-YELLOW STRIPE PER CALTRANS 2018 STD. PLAN A20A, DETAIL 22.
- 7 PAINT 6-INCH DASHED WHITE LINE PER CALTRANS 2018 STD. PLAN A20A, DETAIL 12.
- 8 PAINT 6-INCH SOLID WHITE LINE PER CALTRANS 2018 STD. PLAN A20A, DETAIL 12.
- 9 PAINT 6-INCH SOLID WHITE EDGE LINE PER CALTRANS 2018 STD. PLAN A20B, DETAIL 27B.
- 10 PAINT 8-INCH SOLID WHITE CHANNELIZING LINE PER CALTRANS 2018 STD. PLAN A20D, DETAIL 38.
- 11 PAINT 12-INCH SOLID WHITE CROSSWALK PER CALTRANS 2018 STD. PLAN A24F, BASIC.
- 12 PAINT 12-INCH WHITE HATCHING MARKINGS AT 45° AND 50° SPACING PER CA MUTCD 2014, SEC.3B.24.
- 13 PAINT 12-INCH SOLID YELLOW LINE AT 45° AND 50° SPACING, PER CA MUTCD 2014, SEC. 3B.24.
- 14 PAINT 8-INCH DASHED LANE DROP MARKINGS PER CALTRANS 2018 STD. PLAN A20C, DETAIL 37B.
- 15 INSTALL 36" SPIN-IN CITY POST CHANNELIZER WHITE (3" ROUND) WITH RETROREFLECTIVE SHEETING INCLUDING CORED IN BASE PER MANUFACTURERS SPECIFICATIONS. SPACING AS SHOWN ON PLAN.
- 16 PAINT 6-INCH WHITE STRIPE LANE LINE EXTENSIONS THROUGH INTERSECTIONS PER CALTRANS 2018 STD. PLAN A20D, DETAIL 40.
- 17 PAINT 6-INCH YELLOW STRIPE CENTER LINE EXTENSIONS THROUGH INTERSECTIONS PER CALTRANS 2018 STD. PLAN A20D, DETAIL 41.
- 18 PAINT 6-INCH DASHED WHITE LINE PER CALTRANS 2018 STD. PLAN A20A, DETAIL 9.
- 19 PAINT TWO WAY LEFT TURN LANE PER CALTRANS 2018 STD. PLAN A20B, DETAIL 32.
- 21 PAINT 6-INCH DOUBLE-YELLOW MEDIAN ISLAND STRIPE PER CALTRANS 2018 STD. PLAN A20B, DETAIL 29.

- P PROTECT IN PLACE
- M MATCH/JOIN EXISTING

SEE SHEET 2 OF 17 FOR SAN BERNARDINO COUNTY TRAFFIC CONTROL GENERAL NOTES.



MARK	REVISIONS	DATE

Underground Service Alert

CALL 811

TWO WORKING DAYS BEFORE YOU DIG

PLANS PREPARED UNDER THE SUPERVISION OF:

NV5

WWW.NV5.COM
133 TECHNOLOGY DRIVE
SUITE 200 IRVINE, CA 92618
TEL: (949) 588-0477

DAVID NIKNAFS, P.E. DATE 8/8/24

REGISTERED PROFESSIONAL ENGINEER

DAVID NIKNAFS

No. 42697

CIVIL

STATE OF CALIFORNIA

MARK	CHANGES	RESIDENT ENGINEER	DATE

FIELD CHANGES

SAN BERNARDINO COUNTY
DEPARTMENT OF PUBLIC WORKS

DESIGNED BY: AB DRAWN BY: AB CHECKED BY: DN RECOMMENDED BY: ANTHONY PHAM, P.E. 8/15/2024

APPROVED BY: GRANT MANN, P.E. 8/22/24

LEI LI, P.E. SUPERVISING ENGINEER DATE 8/13/2024

TRANSPORTATION PLANS FOR CONSTRUCTION ON RECHE CANYON ROAD AND OTHER ROADS, COLTON AREA

STRIPING PLAN-C STREET

SAN BERNARDINO COUNTY AND IN THE CITY OF COLTON

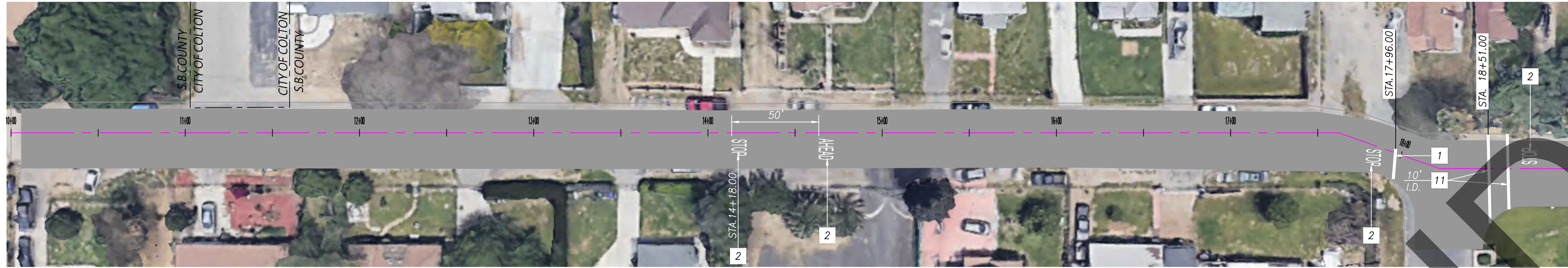
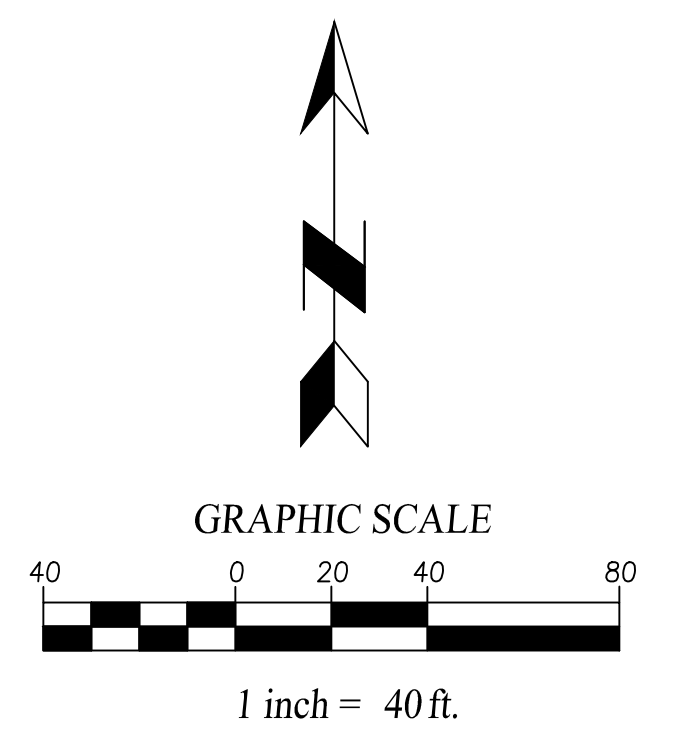
J.L. REF.	W.O. NO.	PLAN SCALE	SHT. NO.	TOT. SHT'S.
	H15172	AS SHOWN	12	17

STRIPING CONSTRUCTION NOTES

- 1 PAINT 12-INCH WHITE LIMIT LINE PER CALTRANS 2018 STD. PLAN A24E.
- 2 PAINT WHITE PAVEMENT MARKING LEGEND PER CALTRANS 2018 STD. PLAN A24D, (TYPE PER PLAN).
- 3 PAINT WHITE PAVEMENT MARKING LEGEND PER CALTRANS 2018 STD. PLAN A24C, (TYPE PER PLAN).
- 4 PAINT TYPE IV LEFT OR RIGHT TURN ARROW PAVEMENT MARKING PER CALTRANS 2018 STD. PLAN A24A.
- 5 PAINT TYPE VI LANE DROP PAVEMENT MARKING PER CALTRANS 2018 STD. PLAN A24A.
- 6 PAINT DOUBLE-YELLOW STRIPE PER CALTRANS 2018 STD. PLAN A20A, DETAIL 22.
- 7 PAINT 6-INCH DASHED WHITE LINE PER CALTRANS 2018 STD. PLAN A20A, DETAIL 12.
- 8 PAINT 6-INCH SOLID WHITE LINE PER CALTRANS 2018 STD. PLAN A20A, DETAIL 12.
- 9 PAINT 8-INCH SOLID WHITE EDGE LINE PER CALTRANS 2018 STD. PLAN A20B, DETAIL 27B.
- 10 PAINT 8-INCH SOLID WHITE CHANNELIZING LINE PER CALTRANS 2018 STD. PLAN A20D, DETAIL 38.
- 11 PAINT 12-INCH SOLID WHITE CROSSWALK PER CALTRANS 2018 STD. PLAN A24F, BASIC.
- 12 PAINT 12-INCH WHITE HATCHING MARKINGS AT 45° AND 50° SPACING PER CA MUTCD 2014, SEC.3B.24.
- 13 PAINT 12-INCH SOLID YELLOW LINE AT 45° AND 50° SPACING, PER CA MUTCD 2014, SEC. 3B.24.
- 14 PAINT 8-INCH DASHED LANE DROP MARKINGS PER CALTRANS 2018 STD. PLAN A20C, DETAIL 37B.
- 15 INSTALL 36" SPIN-IN CITY POST CHANNELIZER WHITE (3" ROUND) WITH RETROREFLECTIVE SHEETING INCLUDING CORED IN BASE PER MANUFACTURERS SPECIFICATIONS. SPACING AS SHOWN.
- 16 PAINT 6-INCH WHITE STRIPE LANE LINE EXTENSIONS THROUGH INTERSECTIONS PER CALTRANS 2018 STD. PLAN A20D, DETAIL 40.
- 17 PAINT 6-INCH YELLOW STRIPE CENTER LINE EXTENSIONS THROUGH INTERSECTIONS PER CALTRANS 2018 STD. PLAN A20D, DETAIL 41.
- 18 PAINT 6-INCH DASHED WHITE LINE PER CALTRANS 2018 STD. PLAN A20A, DETAIL 9.
- 19 PAINT TWO WAY LEFT TURN LANE PER CALTRANS 2018 STD. PLAN A20B, DETAIL 32.
- 21 PAINT 6-INCH DOUBLE-YELLOW MEDIAN ISLAND STRIPE PER CALTRANS 2018 STD. PLAN A20B, DETAIL 29.

- P PROTECT IN PLACE
- M MATCH/JOIN EXISTING

SEE SHEET 2 OF 17 FOR SAN BERNARDINO COUNTY TRAFFIC CONTROL GENERAL NOTES.



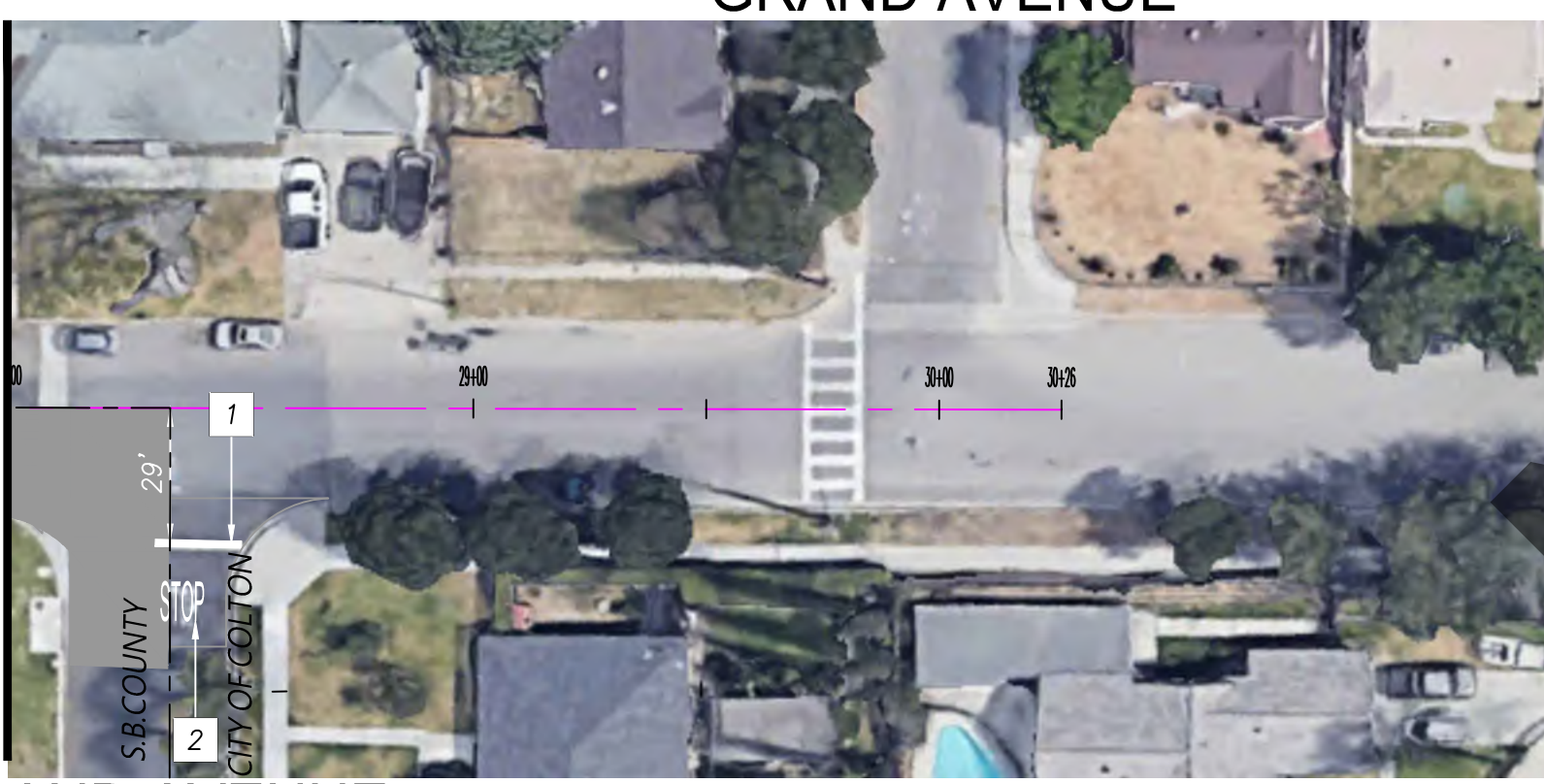
STEVENSON STREET

MATCHLINE STA. 19+00.00
SEE LEFT BELOW

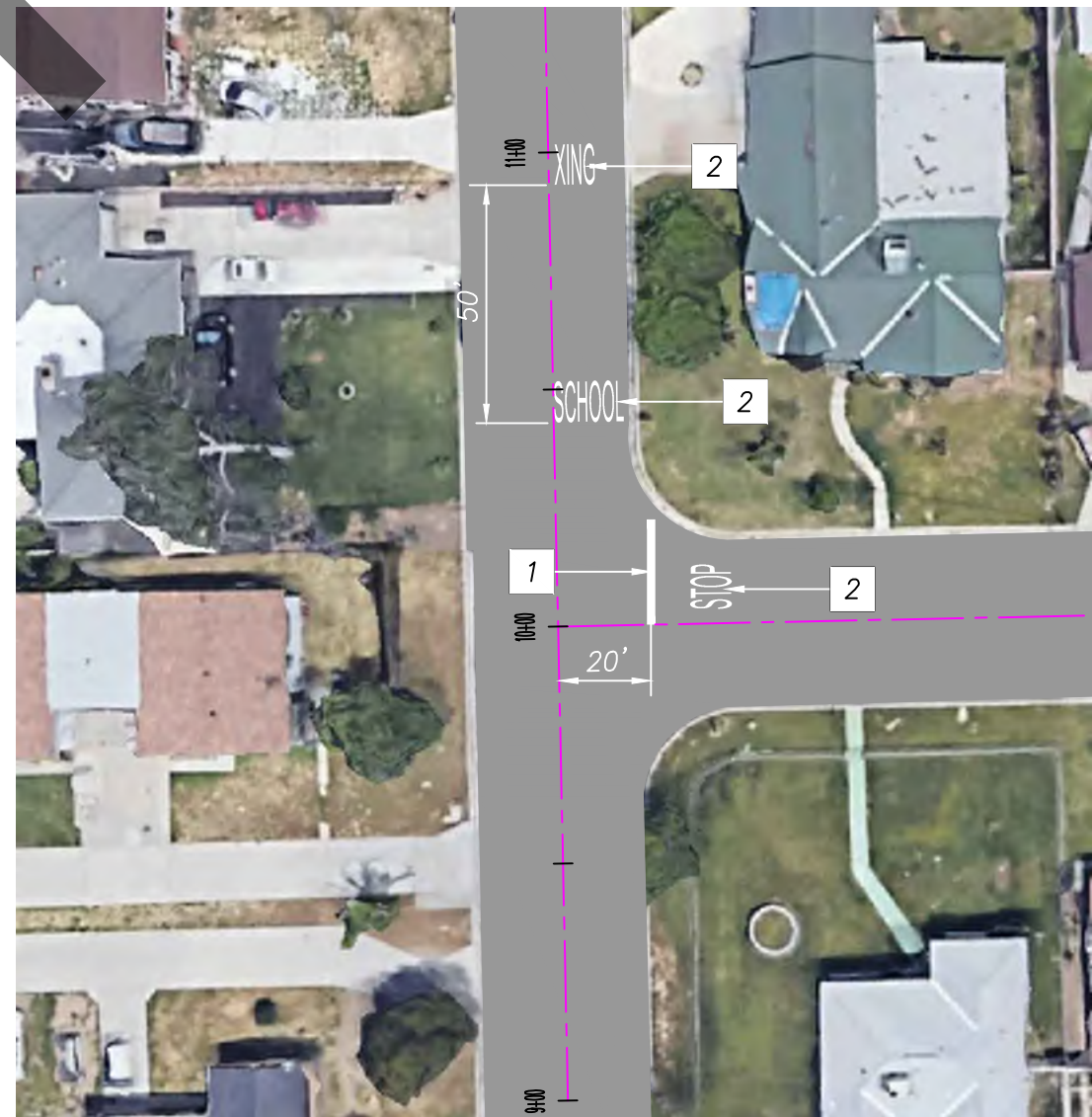


STEVENSON STREET

MATCHLINE STA. 28+00.00
SEE LEFT BELOW



STEVENSON STREET



CYPRESS AVENUE

ORANGE STREET

Underground Service Alert

CALL 811

TWO WORKING DAYS BEFORE YOU DIG

PLANS PREPARED UNDER THE SUPERVISION OF:

NV5

WWW.NV5.COM
133 TECHNOLOGY DRIVE
SUITE 200 IRVINE, CA 92618
TEL: (949) 588-0477

DAVID NIKNAFS, P.E. DATE 8/8/24

REGISTERED PROFESSIONAL ENGINEER

DAVID NIKNAFS

No. 42697

CIVIL

STATE OF CALIFORNIA

MARK	CHANGES	RESIDENT ENGINEER	DATE
	NO CHANGES		
FIELD CHANGES			

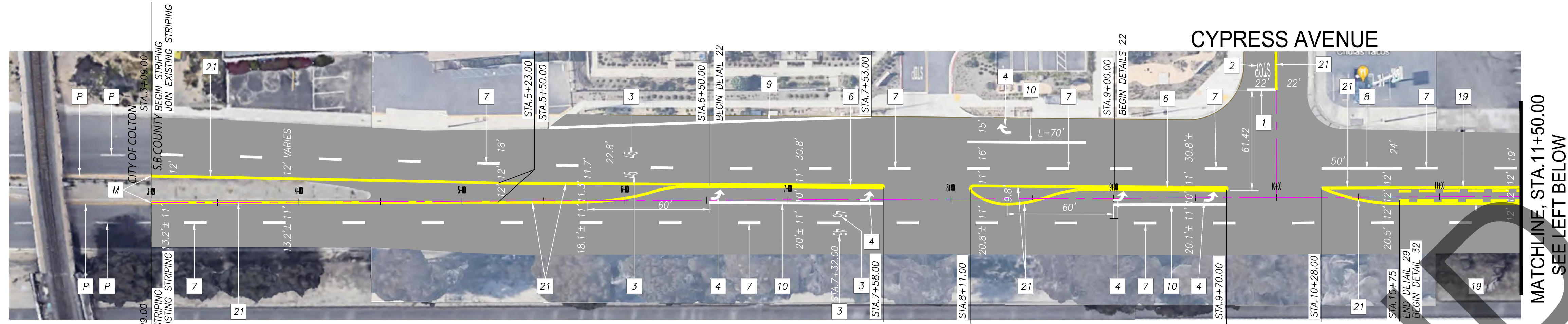
SAN BERNARDINO COUNTY
DEPARTMENT OF PUBLIC WORKS

DESIGNED BY:	DRAWN BY:	CHECKED BY:	RECOMMENDED BY:	DATE
AB	AB	DN	ANTHONY PHAM, P.E.	8/15/2024
APPROVED BY:			DATE	
LEI LI, P.E.			8/13/2024	
GRANT MANN, P.E.			8/22/24	
SUPERVISING ENGINEER			DEPUTY DIRECTOR	

TRANSPORTATION PLANS FOR CONSTRUCTION ON RECHE CANYON ROAD AND OTHER ROADS, COLTON AREA				
STRIPING PLAN-STEVENSON STREET AND CYPRESS STREET				
SAN BERNARDINO COUNTY AND IN THE CITY OF COLTON				
J.L. REF.	W.O. NO.	PLAN SCALE	SHT. NO.	TOT. SHT'S.
	H15172	AS SHOWN	13	17

NOT FOR BIDDING

MARK	REVISIONS	DATE	APPR.	DATE



STRIPING CONSTRUCTION NOTES

- 1 PAINT 12-INCH WHITE LIMIT LINE PER CALTRANS 2018 STD. PLAN A24E.
- 2 PAINT WHITE PAVEMENT MARKING LEGEND PER CALTRANS 2018 STD. PLAN A24D, (TYPE PER PLAN).
- 3 PAINT WHITE PAVEMENT MARKING LEGEND PER CALTRANS 2018 STD. PLAN A24C, (TYPE PER PLAN).
- 4 PAINT TYPE IV LEFT OR RIGHT TURN ARROW PAVEMENT MARKING PER CALTRANS 2018 STD. PLAN A24A.
- 5 PAINT TYPE VI LANE DROP PAVEMENT MARKING PER CALTRANS 2018 STD. PLAN A24A.
- 6 PAINT DOUBLE-YELLOW STRIPE PER CALTRANS 2018 STD. PLAN A20A, DETAIL 22.
- 7 PAINT 6-INCH DASHED WHITE LINE PER CALTRANS 2018 STD. PLAN A20A, DETAIL 12.
- 8 PAINT 6-INCH SOLID WHITE LINE PER CALTRANS 2018 STD. PLAN A20A, DETAIL 12.
- 9 PAINT 6-INCH SOLID WHITE EDGE LINE PER CALTRANS 2018 STD. PLAN A20B, DETAIL 27B.
- 10 PAINT 8-INCH SOLID WHITE CHANNELIZING LINE PER CALTRANS 2018 STD. PLAN A20D, DETAIL 38.
- 11 PAINT 12-INCH SOLID WHITE CROSSWALK PER CALTRANS 2018 STD. PLAN A24F, BASIC.
- 12 PAINT 12-INCH WHITE HATCHING MARKINGS AT 45° AND 50° SPACING PER CA MUTCD 2014, SEC. 3B.24.
- 13 PAINT 12-INCH SOLID YELLOW LINE AT 45° AND 50° SPACING, PER CA MUTCD 2014, SEC. 3B.24.
- 14 PAINT 8-INCH DASHED LANE DROP MARKINGS PER CALTRANS 2018 STD. PLAN A20C, DETAIL 37B.
- 15 INSTALL 36" SPIN-IN CITY POST CHANNELIZER WHITE (3" ROUND) WITH RETROREFLECTIVE SHEETING INCLUDING CORED IN BASE PER MANUFACTURERS SPECIFICATIONS. SPACING AS SHOWN ON PLAN.
- 16 PAINT 6-INCH WHITE STRIPE LANE LINE EXTENSIONS THROUGH INTERSECTIONS PER CALTRANS 2018 STD. PLAN A20D, DETAIL 40.
- 17 PAINT 6-INCH YELLOW STRIPE CENTER LINE EXTENSIONS THROUGH INTERSECTIONS PER CALTRANS 2018 STD. PLAN A20D, DETAIL 41.
- 18 PAINT 6-INCH DASHED WHITE LINE PER CALTRANS 2018 STD. PLAN A20A, DETAIL 9.
- 19 PAINT TWO WAY LEFT TURN LANE PER CALTRANS 2018 STD. PLAN A20B, DETAIL 32.
- 21 PAINT 6-INCH DOUBLE-YELLOW MEDIAN ISLAND STRIPE PER CALTRANS 2018 STD. PLAN A20B, DETAIL 29.

- P PROTECT IN PLACE
- M MATCH/JOIN EXISTING

SEE SHEET 2 OF 17 FOR SAN BERNARDINO COUNTY TRAFFIC CONTROL GENERAL NOTES.

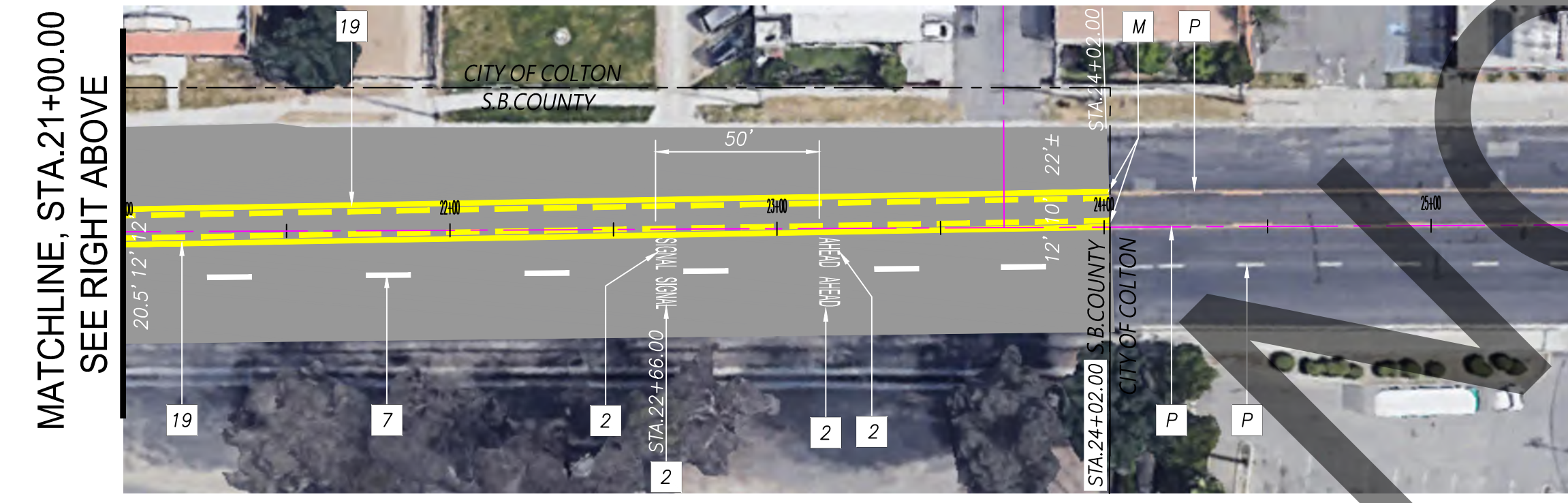
VALLEY BOULEVARD



MATCHLINE, STA. 11+50.00
SEE RIGHT ABOVE

MATCHLINE, STA. 21+00.00
SEE LEFT BELOW

VALLEY BOULEVARD



MATCHLINE, STA. 21+00.00
SEE RIGHT ABOVE

VALLEY BOULEVARD

Underground Service Alert
CALL 811
TWO WORKING DAYS BEFORE YOU DIG

PLANS PREPARED UNDER THE SUPERVISION OF:
NV5
WWW.NV5.COM
133 TECHNOLOGY DRIVE
SUITE 200 IRVINE, CA 92618
TEL: (949) 588-0477
8/8/24
DAVID NIKNAFS, P.E. DATE
C42697

REGISTERED PROFESSIONAL ENGINEER
DAVID NIKNAFS
No. 42697
CIVIL
STATE OF CALIFORNIA

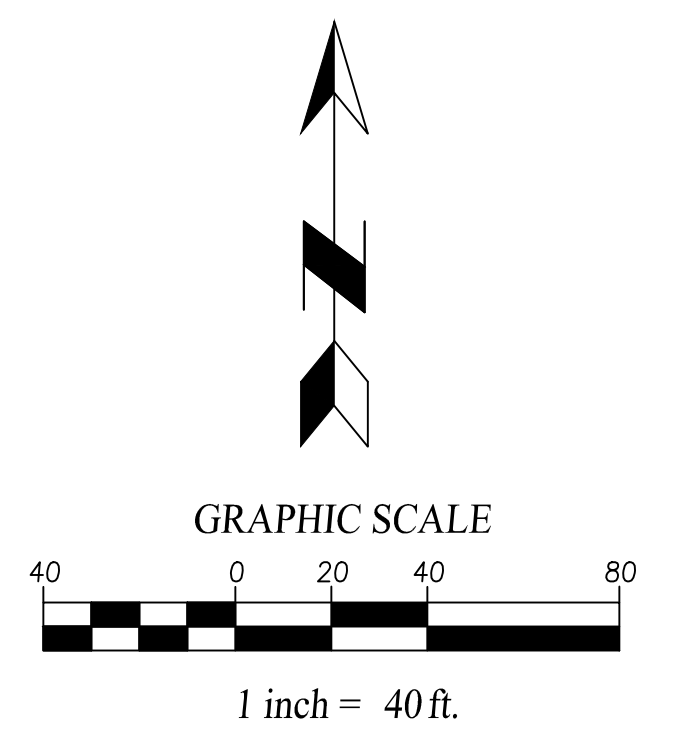
MARK	CHANGES	RESIDENT ENGINEER	DATE
	NO CHANGES		
FIELD CHANGES			

SAN BERNARDINO COUNTY
DEPARTMENT OF PUBLIC WORKS

DESIGNED BY:	DRAWN BY:	CHECKED BY:	RECOMMENDED BY:	DATE
AB	AB	DN	ANTHONY PHAM, P.E.	8/15/2024
APPROVED BY:			GRANT MANN, P.E.	8/22/24
LEI LI, P.E. SUPERVISING ENGINEER			DATE	

TRANSPORTATION PLANS FOR CONSTRUCTION ON RECHE CANYON ROAD AND OTHER ROADS, COLTON AREA
STRIPING PLAN-VALLEY BOULEVARD
SAN BERNARDINO COUNTY AND IN THE CITY OF COLTON

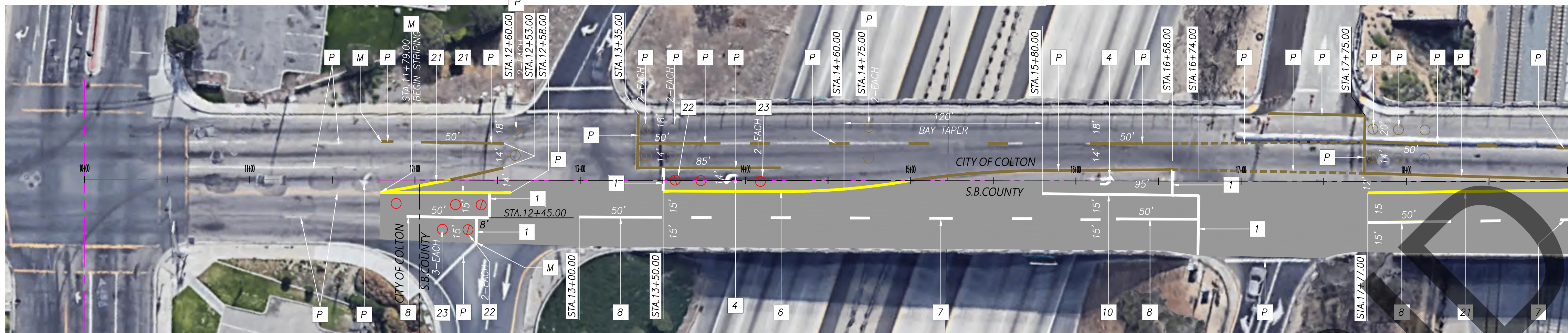
J.L. REF.	W.O. NO.	PLAN SCALE	SHT. NO.	TOT. SHT'S.
	H15172	AS SHOWN	14	17



VALLEY BLVD.

RAMP

FREEWAY 10



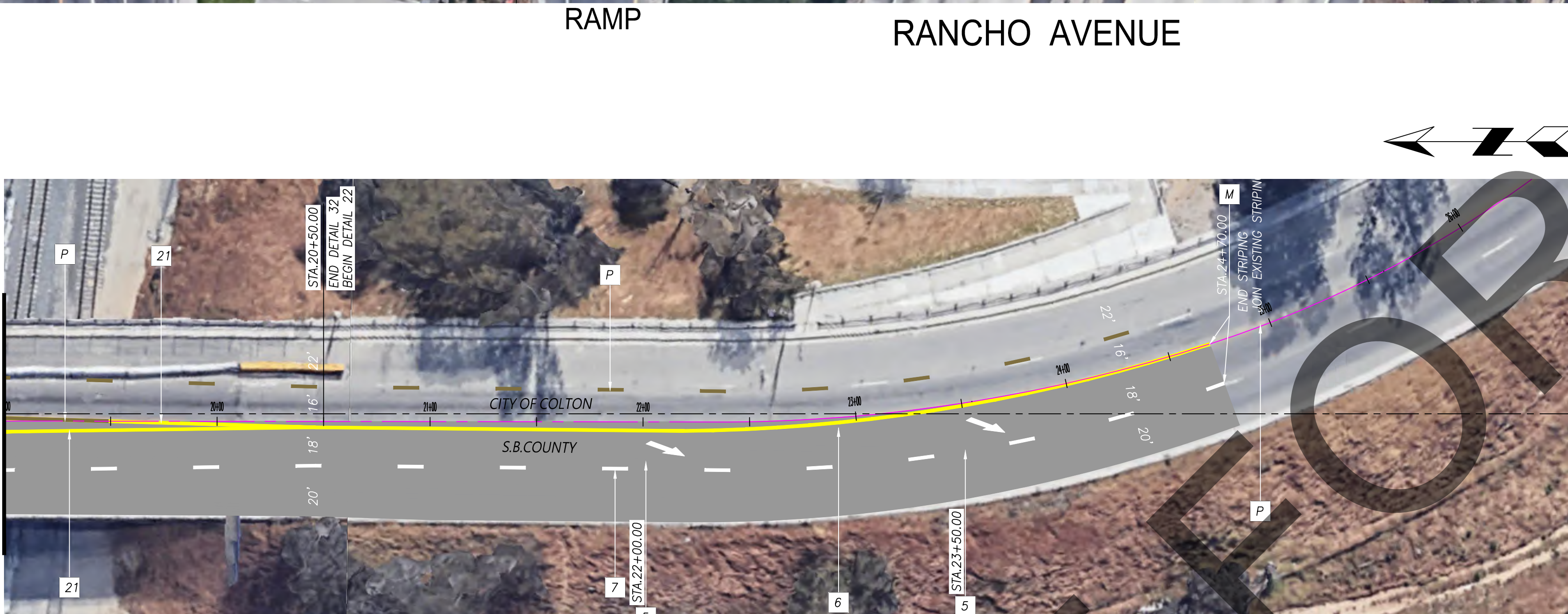
STRIPING CONSTRUCTION NOTES

- 1 PAINT 12-INCH WHITE LIMIT LINE PER CALTRANS 2018 STD. PLAN A24E.
2 PAINT WHITE PAVEMENT MARKING LEGEND PER CALTRANS 2018 STD. PLAN A24D, (TYPE PER PLAN).
3 PAINT WHITE PAVEMENT MARKING LEGEND PER CALTRANS 2018 STD. PLAN A24C, (TYPE PER PLAN).
4 PAINT TYPE IV LEFT OR RIGHT TURN ARROW PAVEMENT MARKING PER CALTRANS 2018 STD. PLAN A24A.
5 PAINT TYPE VI LANE DROP PAVEMENT MARKING PER CALTRANS 2018 STD. PLAN A24A.
6 PAINT DOUBLE-YELLOW STRIPE PER CALTRANS 2018 STD. PLAN A20A, DETAIL 22.
7 PAINT 6-INCH DASHED WHITE LINE PER CALTRANS 2018 STD. PLAN A20A, DETAIL 12.
8 PAINT 6-INCH SOLID WHITE LINE PER CALTRANS 2018 STD. PLAN A20A, DETAIL 12.
9 PAINT 6-INCH SOLID WHITE EDGE LINE PER CALTRANS 2018 STD. PLAN A20B, DETAIL 27B.
10 PAINT 8-INCH SOLID WHITE CHANNELIZING LINE PER CALTRANS 2018 STD. PLAN A20D, DETAIL 38.
11 PAINT 12-INCH SOLID WHITE CROSSWALK PER CALTRANS 2018 STD. PLAN A24F, BASIC.
12 PAINT 12-INCH WHITE HATCHING MARKINGS AT 45° AND 50° SPACING PER CA MUTCD 2014, SEC.3B.24.
13 PAINT 12-INCH SOLID YELLOW LINE AT 45° AND 50° SPACING, PER CA MUTCD 2014, SEC. 3B.24.
14 PAINT 8-INCH DASHED LANE DROP MARKINGS PER CALTRANS 2018 STD. PLAN A20C, DETAIL 37B.
15 INSTALL 36" SPIN-IN CITY POST CHANNELIZER WHITE (3" ROUND) WITH RETROREFLECTIVE SHEETING INCLUDING CORED IN BASE PER MANUFACTURERS SPECIFICATIONS. SPACING AS SHOWN ON PLAN.
16 PAINT 6-INCH WHITE STRIPE LANE LINE EXTENSIONS THROUGH INTERSECTIONS PER CALTRANS 2018 STD. PLAN A20D, DETAIL 40.
17 PAINT 6-INCH YELLOW STRIPE CENTER LINE EXTENSIONS THROUGH INTERSECTIONS PER CALTRANS 2018 STD. PLAN A20D, DETAIL 41.
18 PAINT 6-INCH DASHED WHITE LINE PER CALTRANS 2018 STD. PLAN A20A, DETAIL 9.
19 PAINT TWO WAY LEFT TURN LANE PER CALTRANS 2018 STD. PLAN A20B, DETAIL 32.

MATCHLINE STA19+00.00 SEE LEFT BELOW

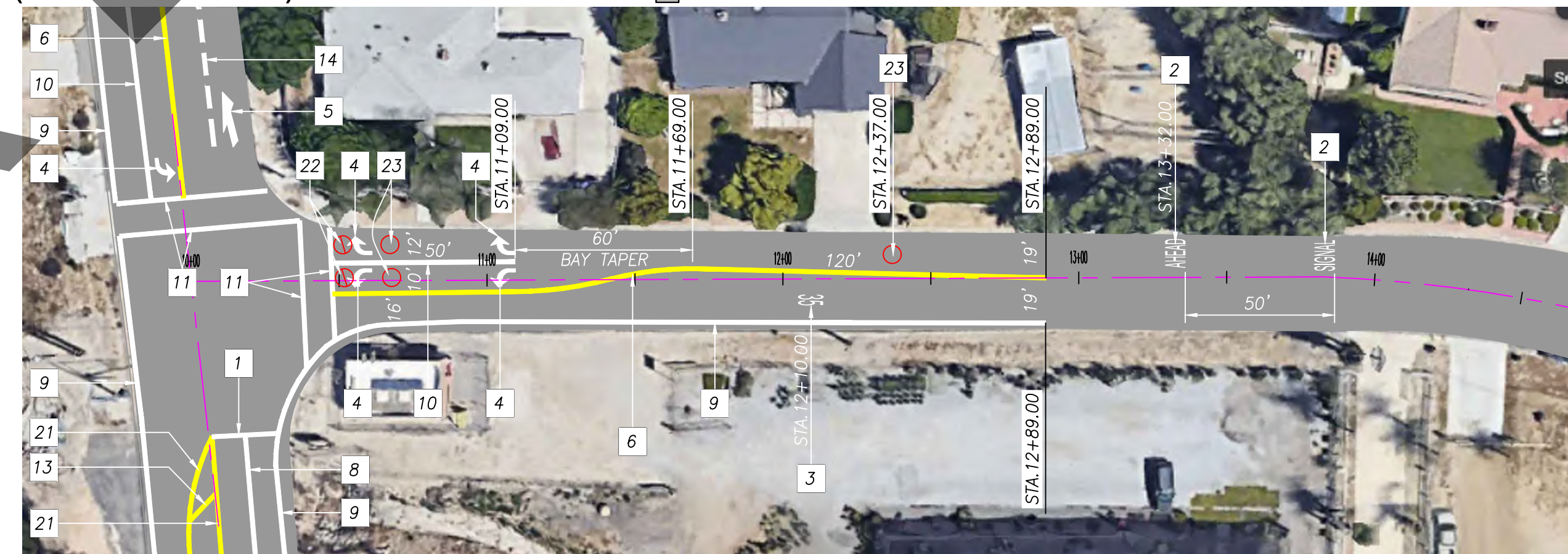
RAMP

RANCHO AVENUE



MATCHLINE, STA.19+00.00 SEE ABOVE RIGHT

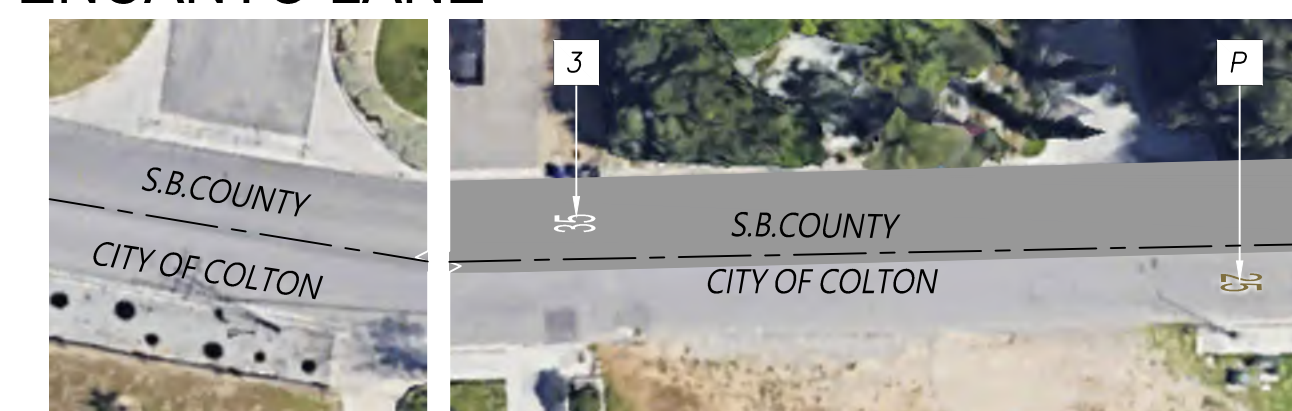
RECHE CANYON ROAD (SEE SHEET 10)



PRADO LANE

RECHE CANYON RD. (SEE SHEET 9)

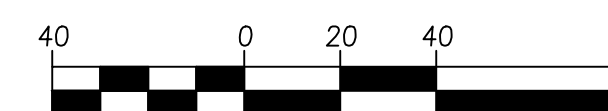
ENCANTO LANE



PRADO LANE

NOTE: THE CONTRACTOR SHALL VERIFY THE LOCATION AND DEPTH OF EXISTING SIGNAL CONDUITS, EXISTING PULL BOX AND EXISTING LOOP DETECTORS INCLUDING ADVANCE LOOPS TO PROTECT IN PLACE OR REPLACE IF DAMAGED DUE TO CONSTRUCTION AS DIRECTED BY THE ENGINEER. THE CONTRACTOR SHALL FURNISH AND INSTALL ANY ADDITIONAL ELECTRONIC EQUIPMENT REQUIRED TO PROVIDE THE DESIRED SIGNAL OPERATIN.

GRAPHIC SCALE



1 inch = 40 ft.

MYRTLEWOOD AVE.

WESTWOOD STREET

SEE SHEET 2 OF 17 FOR SAN BERNARDINO COUNTY TRAFFIC CONTROL GENERAL NOTES.

STRIPING CONSTRUCTION NOTES (CONTINUATION)

- 21 PAINT 6-INCH DOUBLE-YELLOW MEDIAN ISLAND STRIPE PER CALTRANS 2018 STD. PLAN A20B, DETAIL 29.
22 FURNISH AND INSTALL TYPE D LOOP DETECTOR PER CALTRANS 2018 STANDARD PLANS ES-5A AND RSP ES-5B AND MAKE CONNECTION IN EXISTING OR NEW PULL BOX. THE CONTRACTOR SHALL TEST EACH LOOP CIRCUIT FOR CONTINUITY, CIRCUIT RESISTANCE AND INSULATION RESISTANCE AT THE CONTROLLER CABINET LOCATION. FURNISH AND INSTALL NEW DLC (TYPE B) FOR LOOP DETECTORS FROM PULL BOX TO THE CONTROLLER CABINET. SEE DETAIL ON SHEET 9.
23 FURNISH AND INSTALL TYPE E LOOP DETECTOR PER CALTRANS 2018 STANDARD PLANS ES-5A AND RSP ES-5B AND MAKE CONNECTION IN EXISTING OR NEW PULL BOX. THE CONTRACTOR SHALL TEST EACH LOOP CIRCUIT FOR CONTINUITY, CIRCUIT RESISTANCE AND INSULATION RESISTANCE AT THE CONTROLLER CABINET LOCATION. FURNISH AND INSTALL NEW DLC (TYPE B) FOR LOOP DETECTORS FROM PULL BOX TO THE CONTROLLER CABINET. SEE DETAIL ON SHEET 9.

- P PROTECT IN PLACE
M MATCH/JOIN EXISTING

Underground Service Alert logo with text: CALL 811, TWO WORKING DAYS BEFORE YOU DIG

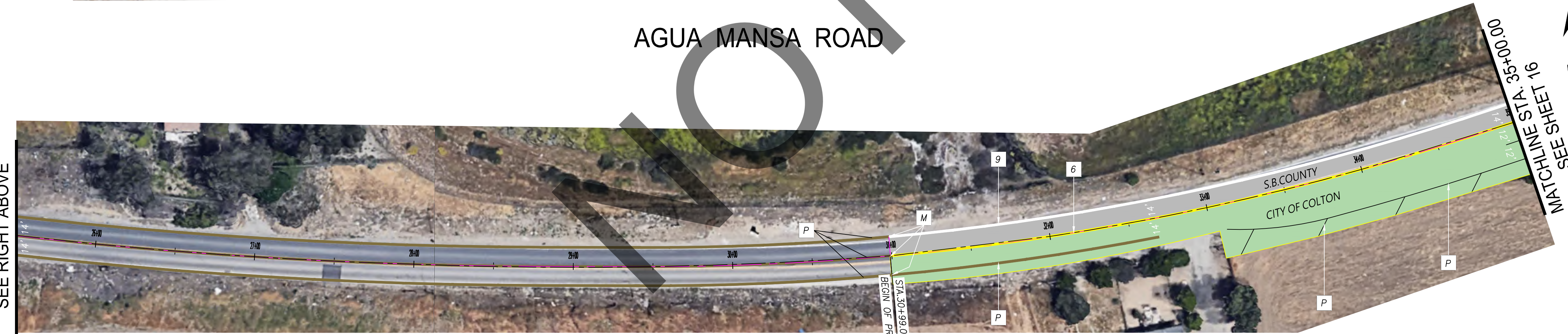
NV5 logo with text: PLANS PREPARED UNDER THE SUPERVISION OF, 133 TECHNOLOGY DRIVE, SUITE 200 IRVINE, CA 92618, TEL: (949) 588-0477, 8/8/24, DAVID NIKNAFS, P.E., CIVIL ENGINEER

Professional Engineer Seal for David Niknafs, No. 42697, State of California

Table with columns: MARK, CHANGES, NO CHANGES, RESIDENT ENGINEER, DATE. Includes 'FIELD CHANGES' and 'RESIDENT ENGINEER' entries.

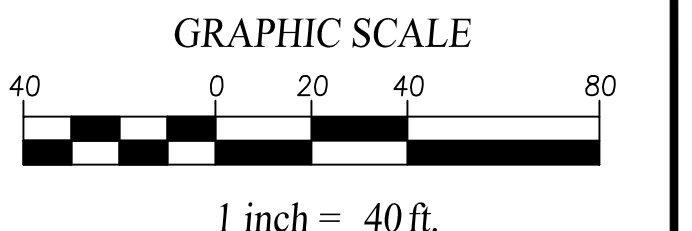
San Bernardino County Department of Public Works approval section. Includes fields for DESIGNED BY, DRAWN BY, CHECKED BY, RECOMMENDED BY, and APPROVED BY with dates and signatures.

Table with columns: J.L. REF., W.O. NO., PLAN SCALE, SHT. NO., TOT. SHT'S. Values: H15172, AS SHOWN, 15, 17.



STRIPING CONSTRUCTION NOTES

- 1 PAINT 12-INCH WHITE LIMIT LINE PER CALTRANS 2018 STD. PLAN A24E.
 - 2 PAINT WHITE PAVEMENT MARKING LEGEND PER CALTRANS 2018 STD. PLAN A24D, (TYPE PER PLAN).
 - 3 PAINT WHITE PAVEMENT MARKING LEGEND PER CALTRANS 2018 STD. PLAN A24C, (TYPE PER PLAN).
 - 4 PAINT TYPE IV LEFT OR RIGHT TURN ARROW PAVEMENT MARKING PER CALTRANS 2018 STD. PLAN A24A.
 - 5 PAINT TYPE VI LANE DROP PAVEMENT MARKING PER CALTRANS 2018 STD. PLAN A24A.
 - 6 PAINT DOUBLE-YELLOW STRIPE PER CALTRANS 2018 STD. PLAN A20A, DETAIL 22.
 - 7 PAINT 6-INCH DASHED WHITE LINE PER CALTRANS 2018 STD. PLAN A20A, DETAIL 12.
 - 8 PAINT 6-INCH SOLID WHITE LINE PER CALTRANS 2018 STD. PLAN A20A, DETAIL 12.
 - 9 PAINT 6-INCH SOLID WHITE EDGE LINE PER CALTRANS 2018 STD. PLAN A20B, DETAIL 27B.
 - 10 PAINT 8-INCH SOLID WHITE CHANNELIZING LINE PER CALTRANS 2018 STD. PLAN A20D, DETAIL 38.
 - 11 PAINT 12-INCH SOLID WHITE CROSSWALK PER CALTRANS 2018 STD. PLAN A24F, BASIC.
 - 12 PAINT 12-INCH WHITE HATCHING MARKINGS AT 45' AND 50' SPACING PER CA MUTCD 2014, SEC.3B.24.
 - 13 PAINT 12-INCH SOLID YELLOW LINE AT 45' AND 50' SPACING, PER CA MUTCD 2014, SEC. 3B.24.
 - 14 PAINT 8-INCH DASHED LANE DROP MARKINGS PER CALTRANS 2018 STD. PLAN A20C, DETAIL 37B.
 - 15 INSTALL 36" SPIN-IN CITY POST CHANNELIZER WHITE (3" ROUND) WITH RETROREFLECTIVE SHEETING INCLUDING CORED IN BASE PER MANUFACTURERS SPECIFICATIONS. SPACING AS SHOWN ON PLAN.
 - 16 PAINT 6-INCH WHITE STRIPE LANE LINE EXTENSIONS THROUGH INTERSECTIONS PER CALTRANS 2018 STD. PLAN A20D, DETAIL 40.
 - 17 PAINT 6-INCH YELLOW STRIPE CENTER LINE EXTENSIONS THROUGH INTERSECTIONS PER CALTRANS 2018 STD. PLAN A20D, DETAIL 41.
 - 18 PAINT 6-INCH DASHED WHITE LINE PER CALTRANS 2018 STD. PLAN A20A, DETAIL 9.
 - 19 PAINT TWO WAY LEFT TURN LANE PER CALTRANS 2018 STD. PLAN A20B, DETAIL 32.
 - 21 PAINT 6-INCH DOUBLE-YELLOW MEDIAN ISLAND STRIPE PER CALTRANS 2018 STD. PLAN A20B, DETAIL 29.
- P PROTECT IN PLACE
M MATCH/JOIN EXISTING



SEE SHEET 2 OF 17 FOR SAN BERNARDINO COUNTY TRAFFIC CONTROL GENERAL NOTES.

MARK	REVISIONS	DATE

AGUA MANSA ROAD

Underground Service Alert

CALL 811

TWO WORKING DAYS BEFORE YOU DIG

PLANS PREPARED UNDER THE SUPERVISION OF:

NV5

WWW.NV5.COM
133 TECHNOLOGY DRIVE
SUITE 200 IRVINE, CA 92618
TEL. (949) 585-0477

DAVID NIKNAFS, P.E. DATE 8/8/24
C42697

MARK	CHANGES	RESIDENT ENGINEER	DATE
	NO CHANGES		

FIELD CHANGES

SAN BERNARDINO COUNTY DEPARTMENT OF PUBLIC WORKS

DESIGNED BY: AB DRAWN BY: AB CHECKED BY: DN RECOMMENDED BY: ANTHONY PHAM, P.E. ENGINEERING MANAGER - TRAFFIC DIVISION DATE 8/15/2024

APPROVED BY: GRANT MANN, P.E. DEPUTY DIRECTOR DATE 8/22/24

LEI LI, P.E. SUPERVISING ENGINEER DATE 8/13/2024

J.L. REF.	W.O. NO.	PLAN SCALE	SHT. NO.	TOT. SHT'S.
	H15172	AS SHOWN	16	17

TRANSPORTATION PLANS FOR CONSTRUCTION ON RECHE CANYON ROAD AND OTHER ROADS, COLTON AREA

STRIPING PLAN-AGUA MANSA ROAD

SAN BERNARDINO COUNTY AND IN THE CITY OF COLTON

