

WARNING: ALL INDIVIDUALS INTERESTED IN BIDDING ON THIS PROJECT MUST OBTAIN THE FINAL PLANS AND SPECIFICATIONS FROM THE DEPARTMENT MANAGING THE PROJECT OR AS OTHERWISE STATED IN THE ADVERTISEMENT FOR BIDS FOR THE PROJECT. DO NOT USE THE PLANS AND SPECIFICATIONS POSTED ON THE CLERK OF THE BOARD'S WEBSITE FOR BIDDING ON THIS PROJECT.

INDEX OF SHEETS

- 1 TITLE SHEET
- 2 PROJECT NOTES, INDEX MAP, LEGENDS AND INDEX OF SHEETS
- 3 TYPICAL SECTIONS AND MISCELLANEOUS DETAILS
- 4-6 PLAN SHEETS (STREETS)
- 7-8 TRAFFIC SIGNING AND STRIPING PLANS

THE FOLLOWING SPECIAL DRAWINGS AND COUNTY STANDARDS ARE ATTACHED TO THE SPECIAL PROVISIONS:

303 A 303 B

TO BE SUPPLEMENTED BY THE FOLLOWING CALTRANS STANDARD PLANS DATED OCTOBER 30, 2015.

A20A A20B A20D A24A
 A24D A24E A62A RSP T9
 RSP T10 T13

TO BE SUPPLEMENTED BY THE FOLLOWING CA MUTCD PLANS DATED, 2014.

FIG 2A-2(CA) FIG 2A-3 FIG 2C-13(CA)
 FIG 3B-102(CA) FIG 6H-28 FIG 6H-29
 FIG 7B-1(CA) Sec. 6D.01 Sec. 6D.02

THIS PROJECT REQUIRES A CONTRACTOR'S LICENSE CLASS "A" OR CLASS C12

GENERAL NOTES

U. THE FACT THAT ANY UTILITY FACILITY IS SHOWN OR NOT SHOWN UPON THE PLANS SHALL NOT RELIEVE THE CONTRACTOR OF THE RESPONSIBILITY UNDER SECTION 8-1.10 "UTILITY AND NON-HIGHWAY FACILITIES," OF THE CALTRANS STANDARD SPECIFICATIONS. IT SHALL BE THE CONTRACTOR'S RESPONSIBILITY, PURSUANT THERETO, TO ASCERTAIN THE LOCATION OF ANY UTILITY FACILITY WHICH MAY BE SUBJECT TO DAMAGE BY REASON OF THE CONTRACTOR'S OPERATIONS.

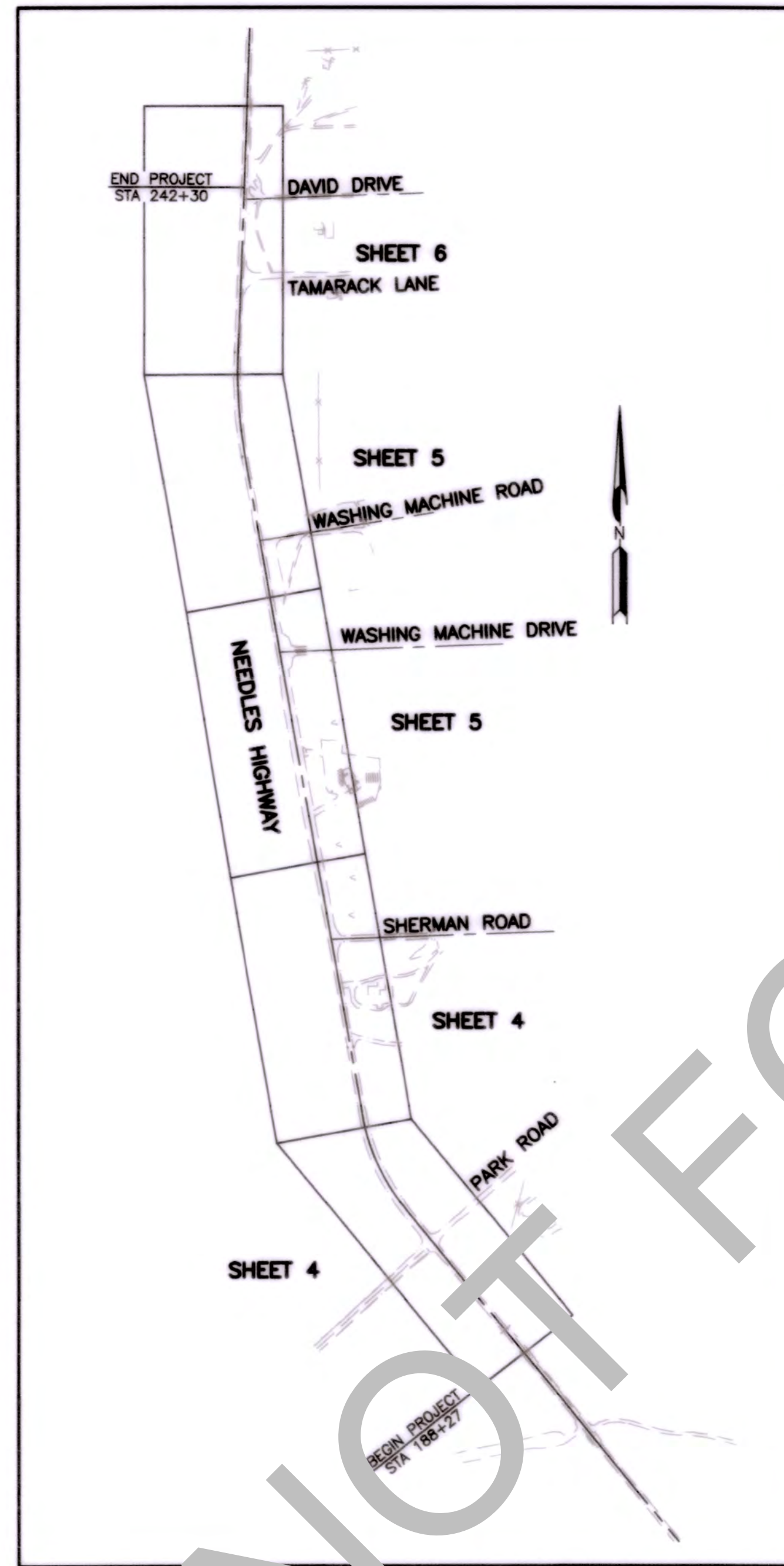
1. ALL STATIONING NOTES ON PLAN REFER TO THE C.L. IMP. OF NEEDLES HIGHWAY OR SIDE STREET.
2. DIMENSIONS ARE SUBJECT TO TOLERANCES SPECIFIED IN THE CALTRANS STANDARD SPECIFICATIONS.
3. ALL PAVEMENT WIDTH DIMENSIONS SHOWN ON THE PLANS ARE TO THE EDGE OF PAVEMENT OR TO THE TOP OF CURB, UNLESS OTHERWISE NOTED.
4. TRANSITIONS AND WARPING SHALL BE AS SHOWN AND AS DETERMINED BY THE ENGINEER.
5. ASPHALT CONCRETE OVERLAYS SHALL BE FEATHERED TO MEET EXISTING AS SHOWN ON THE PLANS OR AS DETERMINED BY THE ENGINEER.
6. ALL TREES & VEGETATION OUTSIDE THE LIMITS OF EXCAVATION AND EMBANKMENT SLOPE LINES, SHALL BE PROTECTED IN PLACE.
7. ALL DISTANCES SHOW HEREON ARE GRID DISTANCES AND MULTIPLY GRID DISTANCE BY 1/CF TO OBTAIN GROUND DISTANCES.

BENCH MARK:

FOUND 3 1/2" NGS BRASS DISK IN 6x6 CONC MNMT ON THE NE'LY SIDE OF 2001 VINE ST ±30' S'LY & 30' W'LY FROM INT. OF VINE ST. & Q ST. PER NGS DATASHEET EU0745. NAVD-88 ELEVATION = 491.57'

BASIS OF BEARINGS:

BEARINGS AND COORDINATES ARE GRID, CCSB3 Zone 5, NAD-83 (1992.88), BASED ON GPS STATIC TIES TO CORS STATIONS "NDMP" & "P625" COMBINATION FACTOR = .9999043653



INDEX MAP NTS

CONSTRUCTION & UNDERGROUND UTILITY LEGEND

- ASPHALT CONCRETE OVERLAY
- PULVERIZED ASPHALT
- GRADED EARTH (SHOULDER BACKING)
- COLD PLANE
- PROPOSED SLOPE
- GAS LINE
- SEWER MAIN
- WATER LINE
- ELECTRIC LINE
- TELEPHONE LINE
- OVERHEAD ELECTRICAL LINE

ABBREVIATIONS LEGEND

- AB = AGGREGATE BASE
- AC = ASPHALT CONCRETE
- AP = ASPIRATED POINT
- BC = BELT CURB
- BEG = BEGIN
- CF = COMBINATION FACTOR
- CL = CENTER LINE
- CONC = CONCRETE
- DM = DEADMAN POWER POLE ANCHOR
- EC = EDGE OF CURVE
- EL = ELEVATION
- EL BOX = ELECTRICAL BOX
- GAS = UNDERGROUND GAS PADDLE
- IMP = IMPROVEMENT
- MB = MAIL BOX
- PI = POINT OF INTERSECTION
- PP = POWER POLE
- R/W = RIGHT OF WAY
- SGN = SIGN
- SSGN = STREET SIGN
- TEL BOX = TELEPHONE BOX/RISER
- TEL PAD = UNDERGROUND TELEPHONE
- () = EXISTING
- VAR = VARIES
- RT = RIGHT
- LT = LEFT
- PT = POINT
- THK = THICKNESS
- MIN = MINIMUM
- GRD = GROUND
- EXIST = EXISTING
- STA = STATION
- EP = EDGE OF PAVEMENT
- ES = EDGE OF SHOULDER
- EOC = EDGE OF CONCRETE

CONSTRUCTION NOTES:

- U UTILITIES TO BE RELOCATED BY OTHERS (SEE NOTE U. OF GENERAL NOTES ON SHEET NO. 2).
 - 1 SCHEDULE A. PULVERIZE IN PLACE THE EXISTING AC AND NATIVE MATERIAL FOR A DEPTH OF 0.40' BELOW THE EXISTING TOP OF PAVEMENT SURFACE, COMPACT TO 95% RELATIVE COMPACTION. PLACE 0.45' OF TYPE "A" 3/4" AGGREGATE GRADATION, PG 64-28PM HOT MIX ASPHALT.
 - 2 ~~ADDITIVE NO. 1 SCHEDULE B~~ **ADDITIVE NO. 2 SCHEDULE C** PULVERIZE IN PLACE THE EXISTING AC AND NATIVE MATERIAL FOR A DEPTH OF 0.40' BELOW THE EXISTING TOP OF PAVEMENT SURFACE, ADD 2% CEMENT TO PULVERIZED MATERIAL AND THEN COMPACT TO 95% RELATIVE COMPACTION. APPLY PRIME COAT TO COMPACTED CEMENT TREATED SUBGRADE. PLACE 0.45' OF TYPE "A" 3/4" AGGREGATE GRADATION, PG 64-28PM HOT MIX ASPHALT.
 - 3 PLACE VARIABLE THICKNESS OVERLAY TO MEET EXISTING ASPHALT PAVING.
 - 4 CONSTRUCT 6" WIDE SHOULDER BACKING PER DETAIL ON SHEET 3.
 - 5 ~~CONSTRUCT ASPHALT CUTOFF WALL 1' WIDE X 4' DEEP PER TYPICAL SECTION ON SHEET 3.~~ **CONSTRUCT 2 SACK SLURRY CEMENT CUTOFF WALL 1' WIDE X 4' DEEP PER TYPICAL SECTION ON SHEET 3.**
 - 6 COLD PLANE EXISTING ASPHALT 0.15' THK MIN.
 - 7 PROTECT IN PLACE.
- NOTE: SEE SPECIAL PROVISION ~~AND ENGINEER'S ESTIMATE~~ FOR ADDITIONAL INFORMATION IN REGARDS TO SCHEDULE A, ~~AND~~ ADDITIVE NO. 1, SCHEDULE B. CONTRACTOR TO BID ON ~~BOTH~~ ITEMS. **ALL** ~~AND ADDITIVE NO. 2 SCHEDULE C~~

SAN BERNARDINO COUNTY TRAFFIC CONTROL GENERAL NOTES :

- 1- ALL SIGNING, STRIPING AND PAVEMENT MARKINGS SHALL BE IN CONFORMANCE WITH THE CALIFORNIA MUTCD LATEST EDITION.
- 2- ALL STRIPING AND PAVEMENT MARKINGS SHALL BE PAINTED IN CONFORMANCE WITH THE CALTRANS 2015 STANDARD PLANS (DATED OCTOBER 30, 2015).
- 3- ALL STRIPING (LONG LINE) AND PAVEMENT MARKINGS SHALL BE RETRO-REFLECTIVE PAINT.
- 4- ALL SIGNS SHALL BE OF HIGH INTENSITY (FHWA TYPE III/IV) RETRO-REFLECTIVE SHEETING EXCEPT:
 - A. "STOP" SIGNS SHALL BE OF DIAMOND GRADE (FHWA TYPE VII IN RURAL SETTINGS AND TYPE IX IN URBAN SETTINGS) RETRO-REFLECTIVE SHEETING.
 - B. "NO PARKING" SIGNS SHALL BE OF SUPER ENGINEERING GRADE (FHWA TYPE II) RETRO-REFLECTIVE SHEETING.
 - C. SCHOOL SIGNS SHALL BE OF DIAMOND GRADE (FHWA TYPE IX) FLUORESCENT YELLOW-GREEN (FYG) RETRO-REFLECTIVE SHEETING.
 - D. STREET NAME MARKERS SHALL BE OF DIAMOND GRADE (FHWA TYPE IX) RETRO-REFLECTIVE SHEETING AND CONFORM TO COUNTY STANDARD 303.
 - E. CONSTRUCTION SIGNS SHALL BE OF DIAMOND GRADE (FHWA TYPE IX) FLUORESCENT ORANGE RETRO-REFLECTIVE SHEETING.
- 5- ALL DELINEATORS, CHANNELIZERS, AND OBJECT MARKERS SHALL BE OF (FHWA TYPE VII) RETRO-REFLECTIVE SHEETING.
- 6- SIGNS SHALL BE MOUNTED ON METAL POSTS SIMILAR TO COUNTY STANDARDS 303(a) AND 303(b).
- 7- ALL CONFLICTING STRIPING AND PAVEMENT MARKINGS NOT SHOWN ON PLANS SHALL BE REMOVED BY THE CONTRACTOR. REMOVAL SHALL BE ACCOMPLISHED BY SANDBLASTING, GRINDING, OR AS DIRECTED BY COUNTY REPRESENTATIVE.
- 8- ALL CONFLICTING SIGNS SHALL BE REMOVED, RELOCATED, OR COVERED BY THE CONTRACTOR. RELOCATABLE SIGNS SHALL BE INSTALLED AS SPECIFIED ON THE PLANS OR AS DIRECTED BY COUNTY REPRESENTATIVE.
- 9- ALL UNPROTECTED LOCATIONS RESULTING IN ISOLATED ABRUPT DEPRESSIONS OR ELEVATED OBJECTS (i.e. CATCH BASINS, HEADWALLS, POWER POLES, END TREATMENT OF ASPHALT DIKES AND CONCRETE CURBS) SHALL BE PROTECTED BY DELINEATORS OR BARRIERS PER THE CALIFORNIA MUTCD LATEST EDITION.
- 10- ALL EXISTING SIGNING, STRIPING AND PAVEMENT MARKINGS (i.e. CROSS STREET STOP, STOP LIMIT LINE, AND CROSSWALK PAVEMENT MARKINGS) NOT SHOWN ON PLANS, IF REMOVED/OBLITERATED, SHALL BE REPLACED/RESTORED OF SAME KIND, AND IN CONFORMANCE WITH THE CALIFORNIA MUTCD LATEST EDITION.
- 11- THE CONTRACTOR SHALL NOTIFY COUNTY REPRESENTATIVE TO SCHEDULE A FINAL REVIEW (WALK THROUGH) WITH TRAFFIC DIVISION PERSONNEL FOR APPROVAL OF TRAFFIC CONTROL DEVICES PRIOR TO PROJECT ACCEPTANCE.

FILE NO. 588575 030

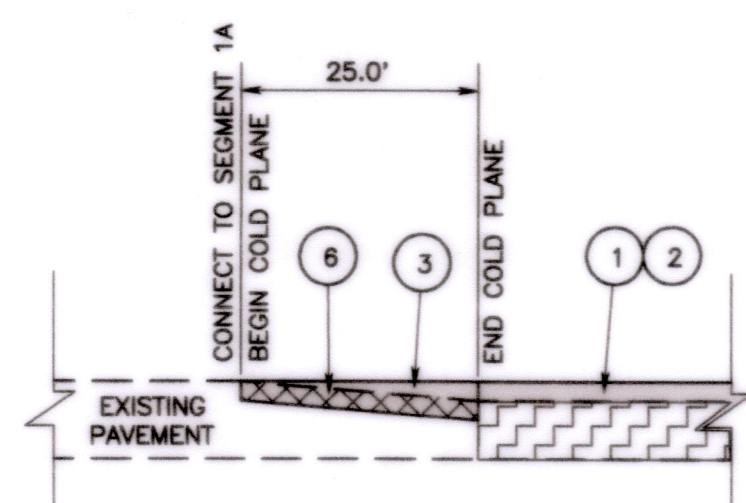
| REVISIONS | DATE | APPR. |
|-----------|------|-------|
| | | |
| | | |
| | | |
| | | |

FILE NO. 588575 030

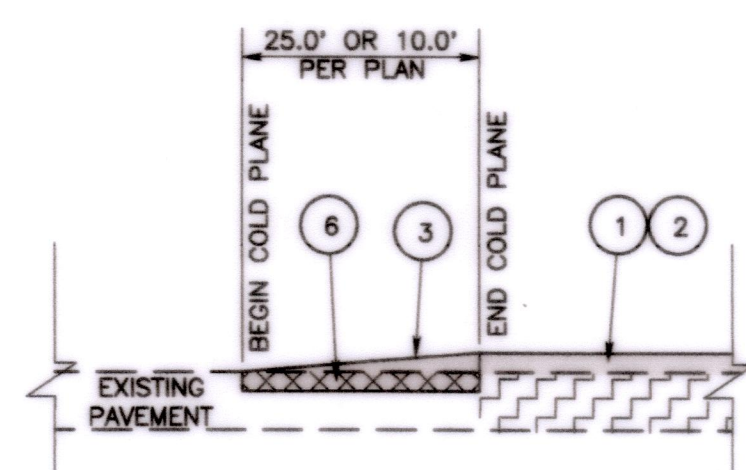
| REVISIONS | DATE | APPR. |
|-----------|------|-------|
| | | |
| | | |
| | | |
| | | |

REVISED CONSTRUCTION NOTE
 REVISED TO ADDITIVE NO. 2 SCH. C

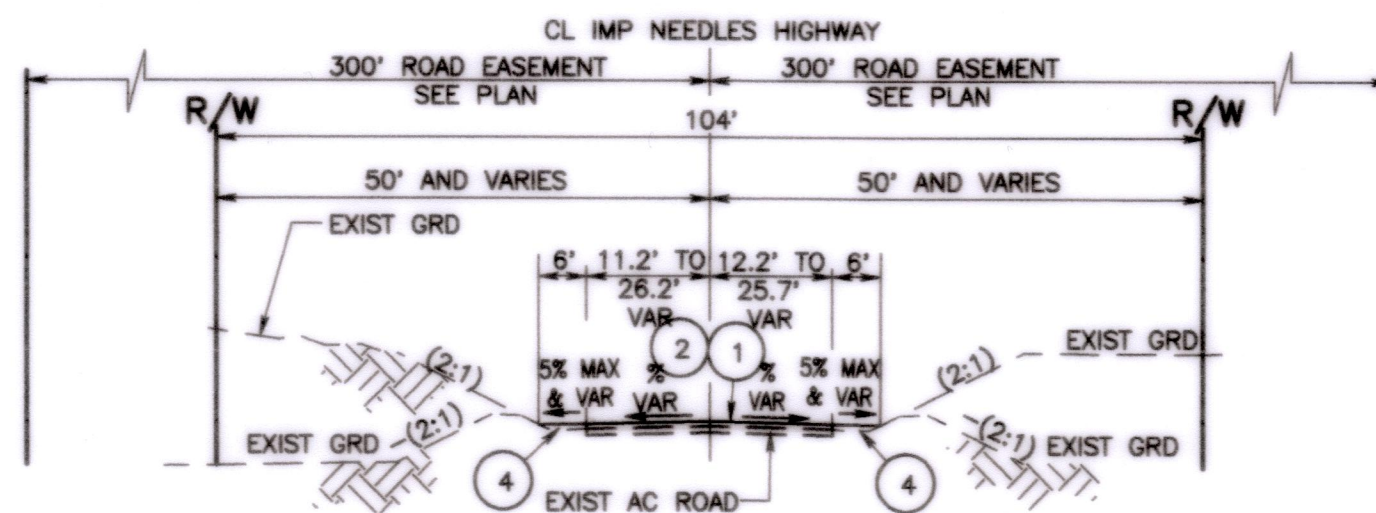
| | | | | | | |
|--|--|--|---|--|---|--|
| FIELD CHANGES MARK CHANGES NO CHANGES RESIDENT ENGINEER DATE | | | SAN BERNARDINO COUNTY DEPARTMENT OF PUBLIC WORKS | | NEEDLES HIGHWAY SEGMENT 1B PROJECT NOTES, INDEX MAP, LEGENDS AND INDEX OF SHEETS NEEDLES AREA | |
| DESIGNED BY: DJ DRAWN BY: CBB CHECKED BY: TB RECOMMENDED BY: <i>[Signature]</i> 1/19/2022 APPROVED BY: <i>[Signature]</i> 1/26/22 THOMAS BUSTAMONTE, P.E. SUPERVISING ENGINEER NOEL CASTILLO, P.E. DEPUTY DIRECTOR | J.L. REF. JL10371 W.O. NO. H14876 SCALE AS SHOWN SHT. NO. 2 TOT. SHTS. 8 | | | | | |



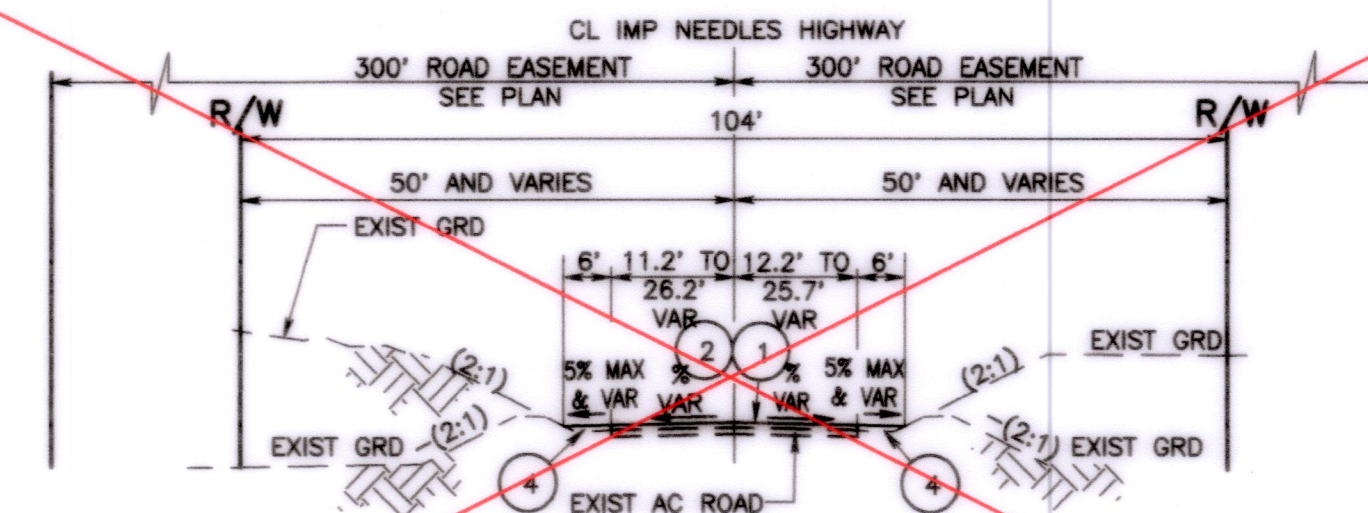
COLD PLANE DETAIL
NOT TO SCALE
STA 188+27.00



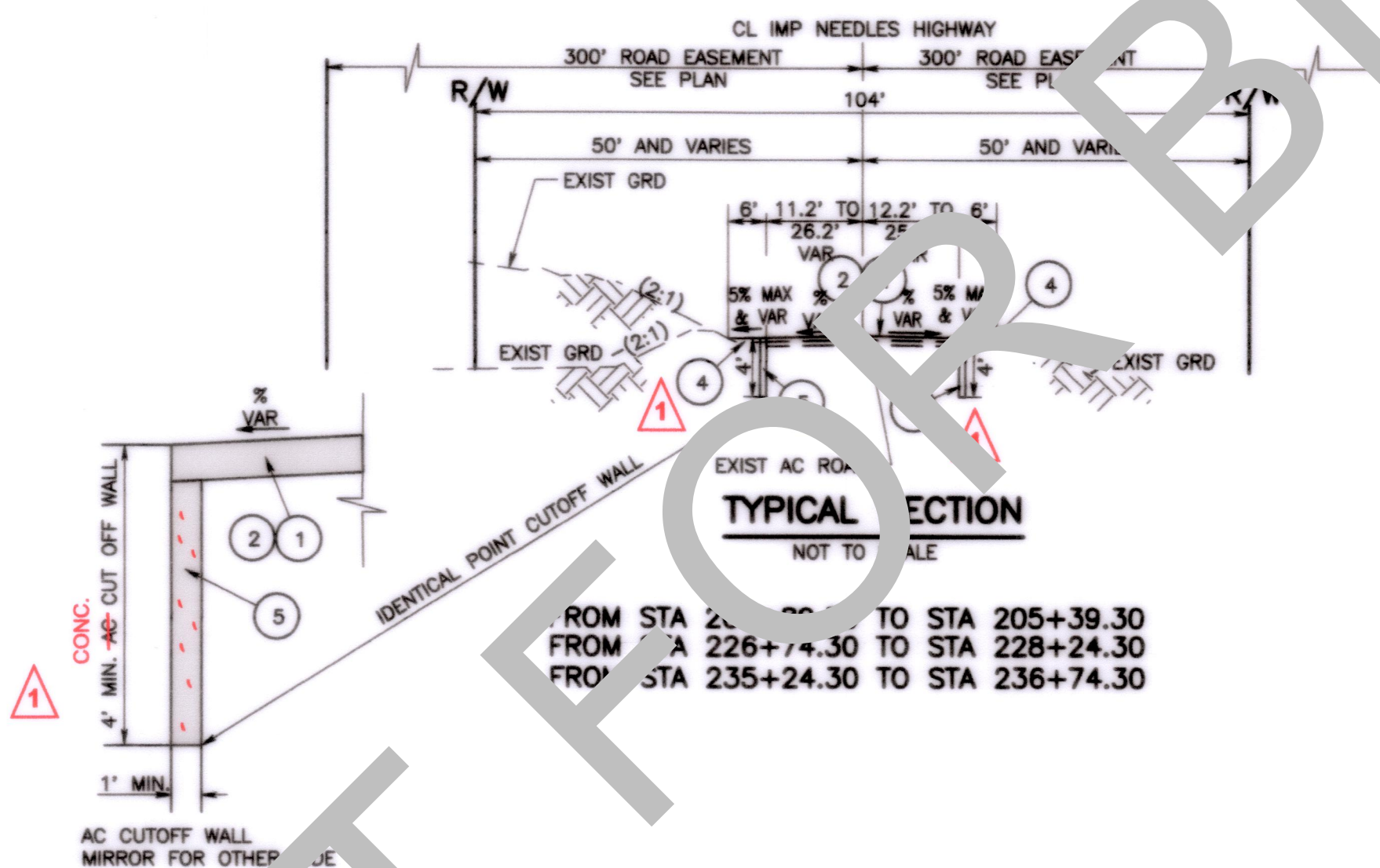
COLD PLANE DETAIL
NOT TO SCALE
STA 242+30.00 229+50.00
DRIVEWAYS AND CROSS ROADS



TYPICAL SECTION
NOT TO SCALE
FROM STA 188+27.00 TO STA 203+89.30
FROM STA 205+39.30 TO STA 226+74.30
FROM STA 228+24.30 TO STA 229+50.00



TYPICAL SECTION
NOT TO SCALE
FROM STA 229+50.00 TO STA 235+24.30
FROM STA 236+74.30 TO STA 242+30.00



TYPICAL SECTION
NOT TO SCALE
FROM STA 205+39.30 TO STA 205+39.30
FROM STA 226+74.30 TO STA 228+24.30
FROM STA 235+24.30 TO STA 236+74.30

NOT FOR BID

- CONSTRUCTION NOTES:**
- 1 UTILITIES TO BE RELOCATED BY OTHERS (SEE NOTE U. OF GENERAL NOTES ON SHEET NO. 2).
 - 1 SCHEDULE A.
 - 2 PULVERIZE IN PLACE THE EXISTING AC AND NATIVE MATERIAL FOR A DEPTH OF 0.40' BELOW THE EXISTING TOP OF PAVEMENT SURFACE, COMPACT TO 95% RELATIVE COMPACTION. PLACE 0.45' OF TYPE "A" 3/4" AGGREGATE GRADATION, PG 64-28PM HOT MIX ASPHALT.
 - 2 ADDITIVE NO. 1, SCHEDULE B - ADDITIVE NO. 2, SCHEDULE C.
 - 3 PULVERIZE IN PLACE THE EXISTING AC AND NATIVE MATERIAL FOR A DEPTH OF 0.40' BELOW THE EXISTING TOP OF PAVEMENT SURFACE, ADD 2% CEMENT TO PULVERIZED MATERIAL AND THEN COMPACT TO 95% RELATIVE COMPACTION. APPLY PRIME COAT TO COMPACTED CEMENT TREATED SUBGRADE. PLACE 0.45' OF TYPE "A" 3/4" AGGREGATE GRADATION, PG 64-28PM HOT MIX ASPHALT.
 - 3 PLACE VARIABLE THICKNESS OVERLAY TO MEET EXISTING ASPHALT PAVING.
 - 4 CONSTRUCT 6' WIDE SHOULDER BACKING PER DETAIL ON SHEET 3.
 - 4 CONSTRUCT ASPHALT CUTOFF WALL 1' WIDE X 4' DEEP PER TYPICAL SECTION ON SHEET 3.
 - 6 COLD PLANE EXISTING ASPHALT 0.15' THK MIN.
 - 5 ADDITIVE NO. 1, SCHEDULE B.
 - 5 CONSTRUCT 2 SACK SLURRY CEMENT CUTOFF WALL 1' WIDE X 4' DEEP PER TYPICAL SECTION ON SHEET 3.

| MARK | REVISIONS | DATE |
|------|----------------------------------|---------|
| Δ | REMOVED TYPICAL SECTION | 4/28/22 |
| Δ | REVISED CONSTRUCTION NOTE | 4/28/22 |
| Δ | REVISED TO ADDITIVE NO. 2 SCH. C | 4/28/22 |
| Δ | REVISED STATION | 4/28/22 |

FILE NO. 588575 030

| | | | |
|--|------------------|--|---|
| SAN BERNARDINO COUNTY DEPARTMENT OF PUBLIC WORKS | | NEEDLES HIGHWAY SEGMENT 1B TYPICAL SECTIONS AND MISCELLANEOUS DETAILS NEEDLES AREA | |
| DESIGNED BY: DJ | DRAWN BY: CBB | CHECKED BY: TB | RECOMMENDED BY: SERVAT N. MIKHAL, P.E. ENGINEERING MANAGER 1/19/2022 |
| APPROVED BY: THOMAS BUSTAMONTE, P.E. SUPERVISING ENGINEER 1/20/22 | | APPROVED BY: NOEL CASTILLO, P.E. DEPUTY DIRECTOR 1/26/22 | |
| FIELD CHANGES NO CHANGES RESIDENT ENGINEER DATE | | J.L. REF. JL10371 | W.O. NO. H14876 |
| | | SCALE AS SHOWN | SH. NO. 3 |
| | | TOT. SH. NO. 8 | |