



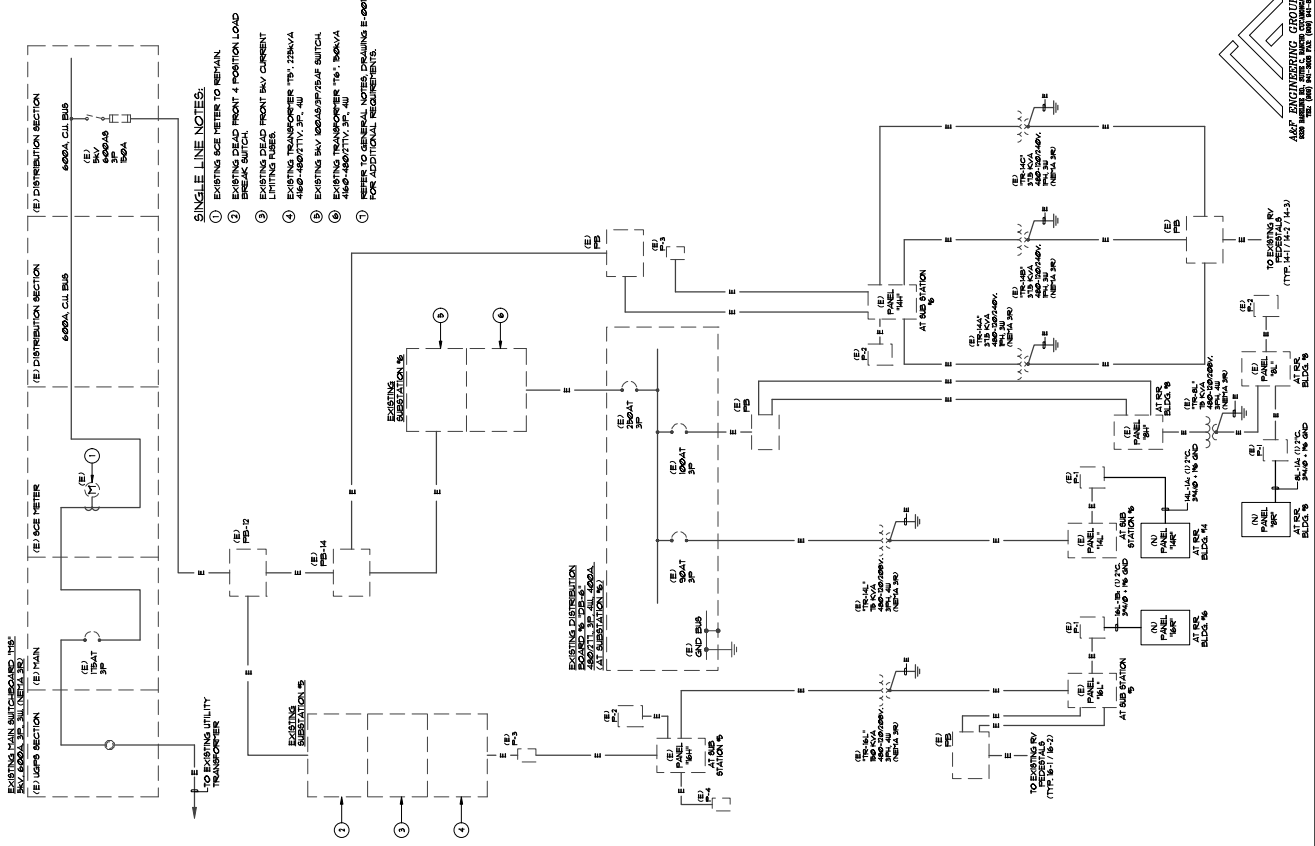
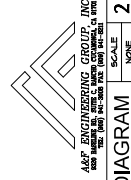
owner approval	
initials	date

revisions/addenda		
no.	date	comment

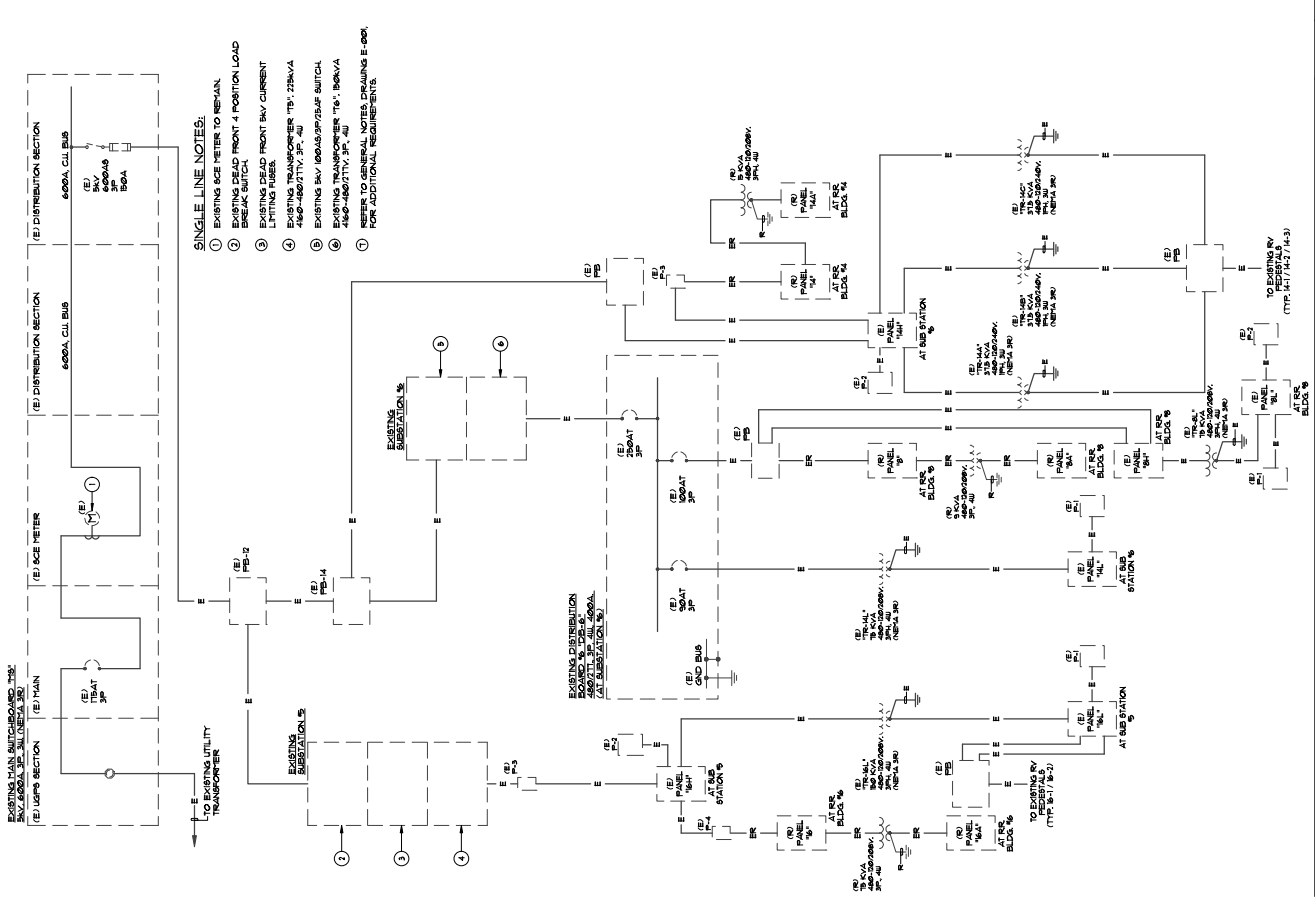
SAN BERNARDINO COUNTY
PROJECT & FACILITIES MANAGEMENT DEPARTMENT
355 NORTH ARROWHEAD AVE. THIRD FLOOR
SAN BERNARDINO, CA 92415-0147
CONTACT: SAHETTA REED PHONE: 909-552-9257

SAN BERNARDINO COUNTY PRADO RV CAMP
RESTROOM REMODEL
0 8100 RUBEN AVENUE
CHINO, CA 91708
APN: 105-201-10-0000
PROJECT NO: 2300050A
DWG FILE: LMF
DRAWN BY: RES
CHECKED BY: NONE
DRAWING SCALE: NONE
DATE: 3-29-2024

sheet name
**SINGLE LINE
DIAGRAM**
sheet number
E-002



REMODEL SINGLE LINE DIAGRAM SCALE NONE SHEET 32



DEMOLITION SINGLE LINE DIAGRAM SCALE NONE SHEET 31

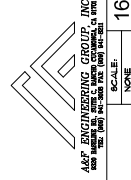


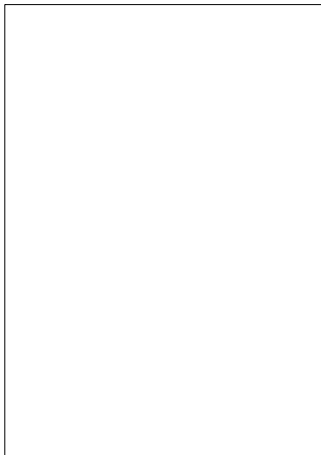
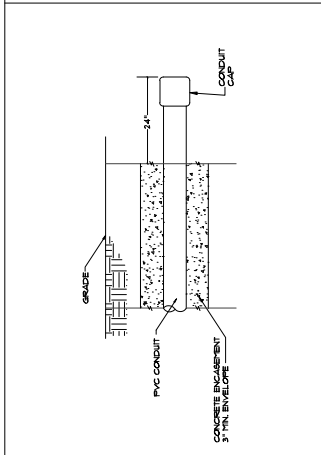
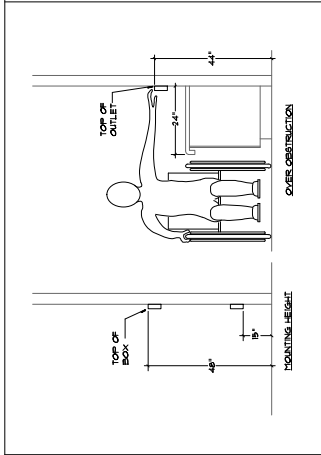
owner approval
initials: _____ date: _____ phase: _____

revisions/addenda
#1: _____ DATE: _____ COMMENT: _____
#2: _____ DATE: _____ COMMENT: _____
#3: _____ DATE: _____ COMMENT: _____
#4: _____ DATE: _____ COMMENT: _____

SAN BERNARDINO COUNTY PRADO RV CAMP
PROJECT & FACILITIES MANAGEMENT DEPARTMENT
SAN BERNARDINO COUNTY
365 NORTH ARROWHEAD AVE. THIRD FLOOR
SAN BERNARDINO, CA 92415-0184
CONTACT: SARETTA REED PHONE: 909-552-0247
P: P: 105-201-10-0000
O: 917-938-8888
F: 917-938-8888
ADDRESS: 6700 ROCK AVENUE
STROM REMODEL
SAN BERNARDINO COUNTY
PROJECT NO. 23000500A
DWG FILE: LMF
DRAWN BY: RES
CHECKED BY: NONE
DRAWING SCALE: NONE
DATE: 3-29-2024

sheet name
ELECTRICAL
DETAILS
sheet number
E-004
SHEET 34 OF 45 SHEETS



 <p>NOTES: 1. DUCT BANK 2 MIN. OR 4" IN DIA. IF BETWEEN HANGERS OR HANGER AND WALL OR CABLE TRAYS. 2. HANGERS SHALL BE STRAIGHT WITHOUT ANY HOLES OR LIPS. POINTS BETWEEN ENDS THE HIGHER END OR CABLE RISER.</p>	 <p>SCALE: NONE</p>	 <p>SCALE: NONE</p>	<p>NOT USED</p> <p>SCALE: NONE</p>
<p>NOT USED</p> <p>SCALE: NONE</p>	<p>NOT USED</p> <p>SCALE: NONE</p>	<p>NOT USED</p> <p>SCALE: NONE</p>	<p>NOT USED</p> <p>SCALE: NONE</p>
<p>NOT USED</p> <p>SCALE: NONE</p>	<p>NOT USED</p> <p>SCALE: NONE</p>	<p>NOT USED</p> <p>SCALE: NONE</p>	<p>NOT USED</p> <p>SCALE: NONE</p>
<p>NOT USED</p> <p>SCALE: NONE</p>	<p>NOT USED</p> <p>SCALE: NONE</p>	<p>NOT USED</p> <p>SCALE: NONE</p>	<p>NOT USED</p> <p>SCALE: NONE</p>

- PLAN NOTES:**
- 1. REFER TO GENERAL NOTES, SHEET E-001 FOR ADDITIONAL REQUIREMENTS.
 - 2. ALL CIRCUITS SERVING THE REPOSEL AREA WHETHER IDENTIFIED ON PLAN OR NOT SHALL BE TRACED AND IDENTIFIED PRIOR TO START OF CONSTRUCTION. THE REPOSEL AREA IS A REGIONAL PARK THAT IS A REPOSEL UNDER THE REGIONAL PARKS ACT OF 1980. ANY OPERATIONAL WORK THAT SERVE AREAS OF THE REGIONAL PARKS THAT ARE NOT IDENTIFIED ON THIS PLAN SHALL BE STOPPED IMMEDIATELY UPON OPERATIONAL PERSONNEL DURING THE CONSTRUCTION PHASE. INTERRUPTION OF SERVICE WILL NOT BE ALLOWED.

1477 Hark Street, Suite 200
 Redlands, CA 92374
 Phone: (909) 335-7400
 Fax: (909) 335-7289
 info@millerelliip.com



owner approval	
initials	phase

revisions/addenda	
rev.	comment
1	
2	
3	
4	

SAN BERNARDINO COUNTY PROJECT & FACILITIES MANAGEMENT DEPARTMENT
 PROJECT & FACILITIES MANAGEMENT DEPARTMENT
 355 NORTH ARROWHEAD AVE. THIRD FLOOR
 SAN BERNARDINO, CA 92415-0184
 CONTACT: SARETTA REED PHONE: 909-552-0427

project information
 PROJECT NO.: 23000504RA
 DRAWING FILE: LMF
 DRAWN BY: RES
 CHECKED BY: N.T.S.
 DATE: 3-29-2024

sheet name

**OVERALL
 SITE PLAN**

sheet number
ES-101



SITE PLAN/KEY PLAN





owner approval		
initials	date	phase

revisions/addenda		
no.	date	comment

SAN BERNARDINO COUNTY
PROJECT & FACILITIES MANAGEMENT DEPARTMENT
385 NORTH ARROWHEAD AVE, THIRD FLOOR
SAN BERNARDINO, CA 92415-0184
CONTACT: SARETTA REED PHONE: 909-552-0427

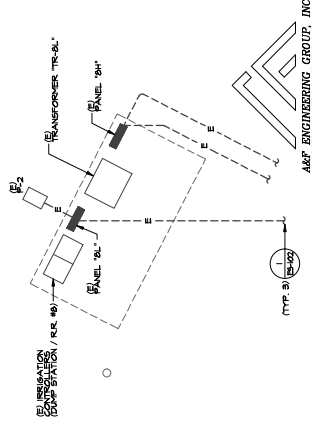
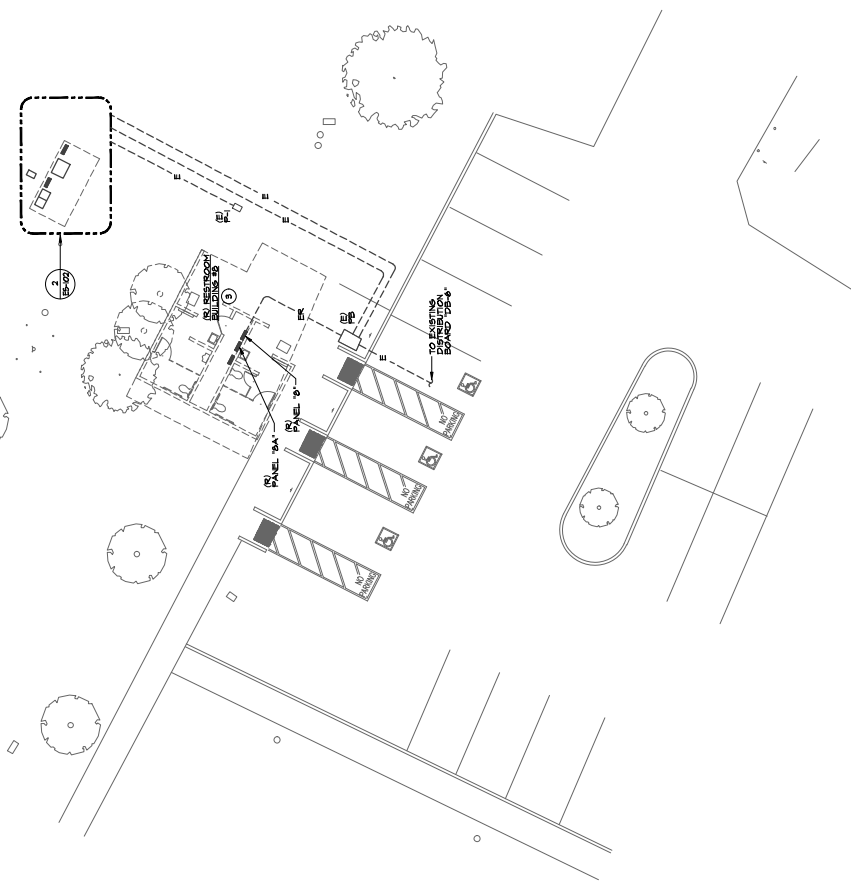
SAN BERNARDINO COUNTY PRADO RV CAMP
78 RESTROOM REMODEL
91700 ROUND AVENUE
CHINO, CA 91708
APN: 1057-201-10-0000

project information
PROJECT NO. 2300500A
DWG FILE: LMF
DRAWN BY: RES
CHECKED BY: RES
DRAWING SCALE: 1" = 16'-0"
DATE: 3-29-2024

sheet name
**RESTROOM #8
DEMOLITION
SITE PLAN**

sheet number
ES-102

- PLAN NOTES:**
1. REFER TO GENERAL NOTES, SHEET E-001 FOR ADDITIONAL REQUIREMENTS.
 2. ALL CIRCUITS SERVING THE REMODEL AREA WHETHER IDENTIFIED ON THIS PLAN OR NOT, SHALL BE TRACED AND IDENTIFIED PRIOR TO START OF DEMOLITION WORK. THE CONTRACTOR SHALL BE RESPONSIBLE FOR TRACING AND IDENTIFYING ALL CIRCUITS SERVING THE REMODEL AREA. THE CONTRACTOR SHALL BE RESPONSIBLE FOR IDENTIFYING ALL CIRCUITS SERVING THE REMODEL AREA. THE CONTRACTOR SHALL BE RESPONSIBLE FOR IDENTIFYING ALL CIRCUITS SERVING THE REMODEL AREA. THE CONTRACTOR SHALL BE RESPONSIBLE FOR IDENTIFYING ALL CIRCUITS SERVING THE REMODEL AREA.
 3. EXISTING RESTROOM BUILDING TO BE DEMOLISHED. CONTRACTOR TO VERIFY LOCATION OF ALL UTILITIES PRIOR TO DEMOLITION. CONTRACTOR TO VERIFY LOCATION OF ALL UTILITIES PRIOR TO DEMOLITION. CONTRACTOR TO VERIFY LOCATION OF ALL UTILITIES PRIOR TO DEMOLITION.





owner approval	
initials	phase

revisions/addenda		
no.	date	comment

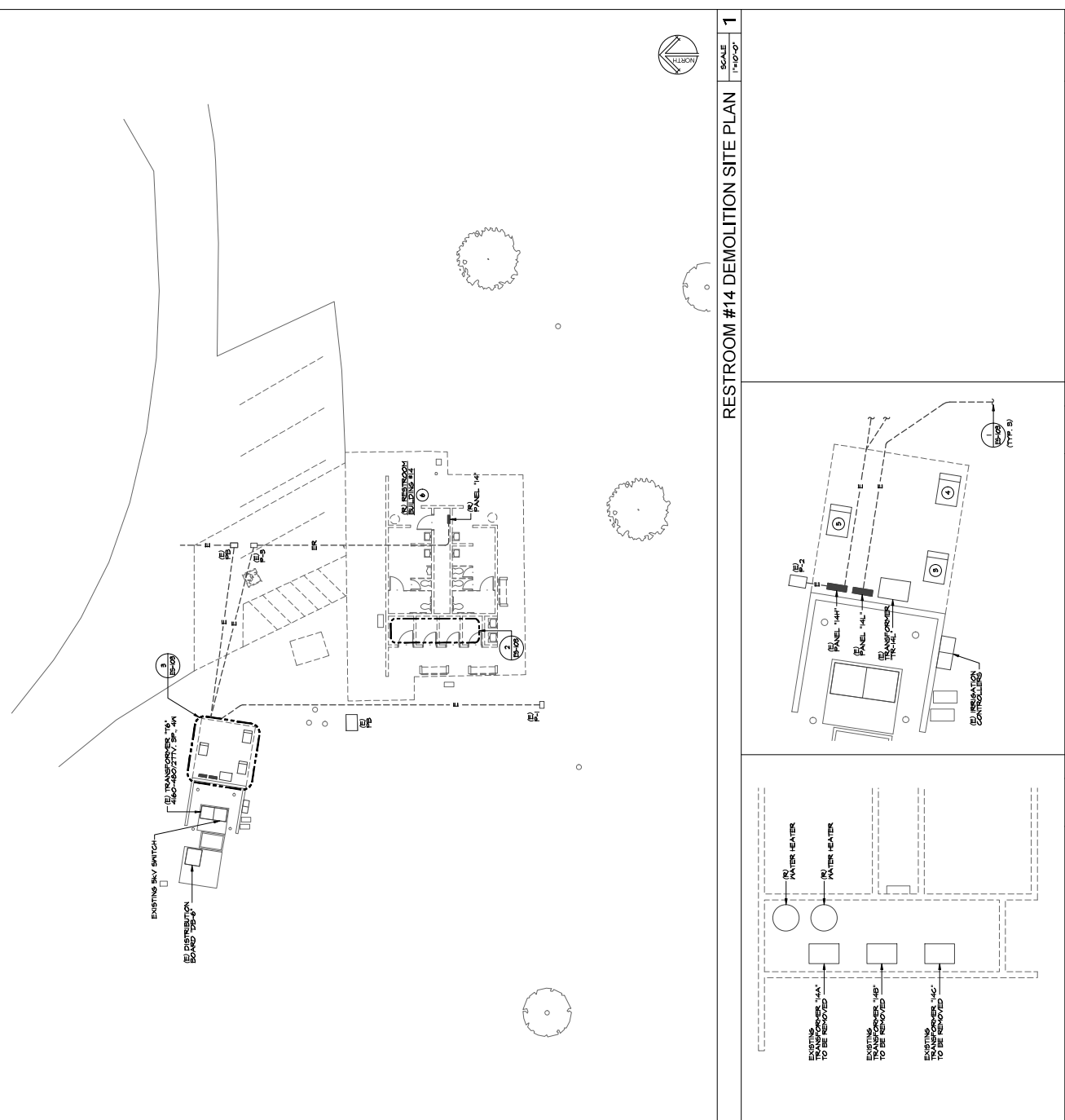
SAN BERNARDINO COUNTY PRADO RV CAMP
RESTROOM REMODEL
PROJECT & FACILITIES MANAGEMENT DEPARTMENT
SAN BERNARDINO COUNTY
365 NORTH ARROWHEAD AVE. THIRD FLOOR
SAN BERNARDINO, CA 92415-0184
CONTACT: SARETTA REED PHONE: 909-552-0427

PROJECT INFORMATION
PROJECT NO. 2300050ARA
DWG FILE: LMF
DRAWN BY: RES
CHECKED BY: RES
DRAWING SCALE: 1" = 10'-0"
DATE: 3-29-2024

SHEET NAME
**RESTROOM #14
DEMOLITION
SITE PLAN**
sheet number
ES-103



- PLAN NOTES:**
1. REFER TO GENERAL NOTES, SHEET E-001 FOR ADDITIONAL REQUIREMENTS.
 2. ALL CIRCUITS SERVING THE REMODEL AREA (WHETHER IDENTIFIED ON PLAN OR NOT) SHALL BE TRACED AND IDENTIFIED PRIOR TO START OF DEMOLITION WORK. THE TRACING SHALL BE IDENTIFIED AS TO THE ORIGINAL WORK THAT SERVES AREAS OF THE REGIONAL PARK THAT ARE TO BE DEMOLISHED. THE TRACING SHALL BE IDENTIFIED IN OPERATIONAL DRAWINGS. THE CONSTRUCTION PHASE INTERRUPTION OF SERVICE WILL NOT BE ALLOWED.
 3. EXISTING TRANSFORMER TRR-14A 480-300/240V, 1P, 3W, (NEPA 3R).
 4. EXISTING TRANSFORMER TRR-14B 480-300/240V, 1P, 3W, (NEPA 3R).
 5. EXISTING TRANSFORMER TRR-14C 480-300/240V, 1P, 3W, (NEPA 3R).
 6. EXISTING RESTROOM BUILDINGS TO BE DEMOLISHED. CONTRACTORS TO REMOVE ALL ELECTRICAL EQUIPMENT, DEVICES, COMPONENTS, ETC. FROM THE RESTROOM BUILDINGS AS PART OF THE DEMOLITION PHASE OF THE RESTROOM BUILDINGS.



RESTROOM #14 DEMOLITION SITE PLAN	SCALE 1/4"=1'-0"	1
RESTROOM #14 MEZZANINE	SCALE 1/4"=1'-0"	2
SUBSTATION #6 YARD	SCALE 1/4"=1'-0"	3
NOT USED	SCALE NONE	4

1177 Mark Street, Suite 200
Redlands, CA 92374
Phone: (909) 335-7400
Fax: (909) 335-7289
info@milleraiip.com



owner approval
initials date phase

revisions/addenda
initials date comment

initials	date	comment

SAN BERNARDINO COUNTY PRADO RY CAMP
RESTROOM REMODEL
PROJECT & FACILITIES MANAGEMENT DEPARTMENT
SAN BERNARDINO COUNTY
365 NORTH ARROWHEAD AVE. THIRD FLOOR
SAN BERNARDINO CA 92415-0184
CONTACT: SARETTA REED PHONE: 909-552-0427

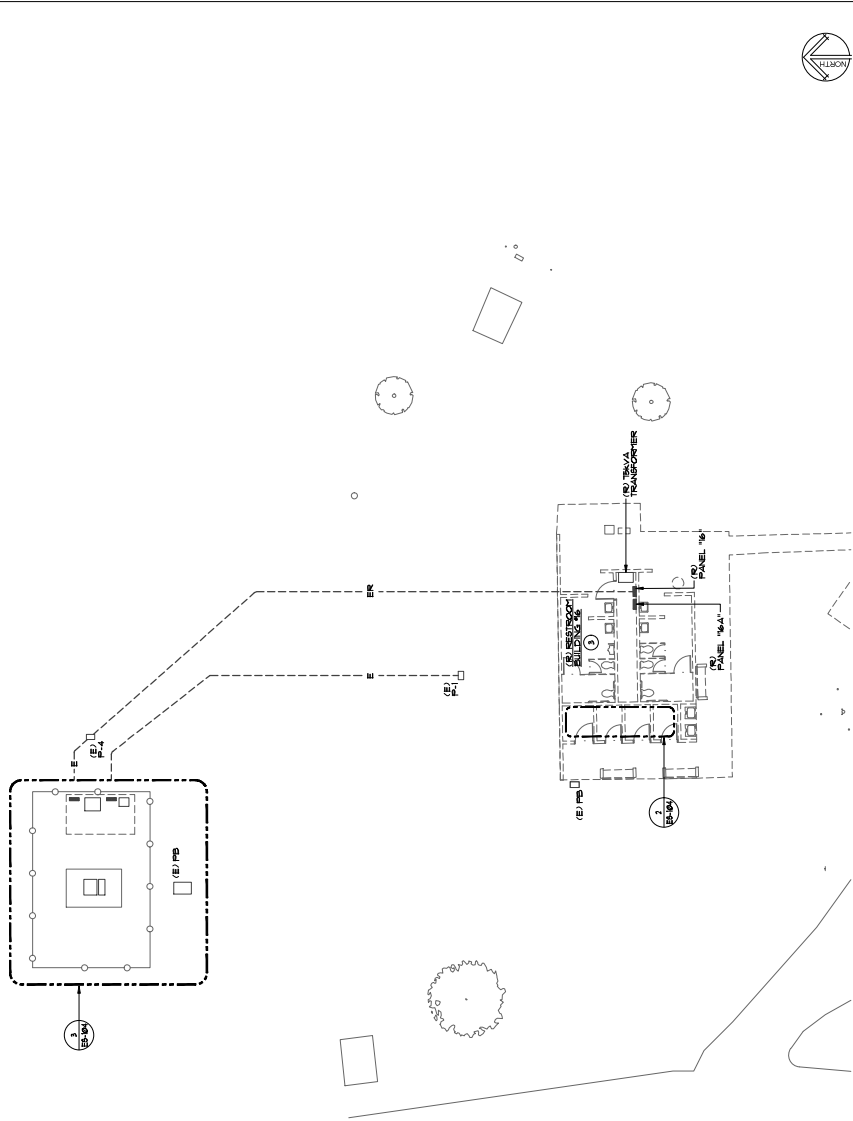
project information
PROJECT NO: 23000500ARA
DWG FILE: LMF
DRAWN BY: RES
CHECKED BY: RES
DRAWING SCALE: 1" = 10'-0"
DATE: 3-29-2024

sheet name
RESTROOM #16
DEMOLITION
SITE PLAN

sheet number
ES-104



- PLAN NOTES:**
- REFER TO GENERAL NOTES, SHEET E-001 FOR ADDITIONAL REQUIREMENTS.
 - ALL CIRCUITS SERVING THE REMODEL AREA WHETHER IDENTIFIED ON PLAN OR NOT SHALL BE TRACED AND IDENTIFIED PRIOR TO START OF DEMOLITION WORK. ALL TRACING SHALL BE IDENTIFIED WITH TAGS AND PHOTOGRAPHIC RECORDS THAT IDENTIFY AREAS OF THE REGIONAL PARK THAT ARE TO BE DEMOLISHED. ALL TRACING SHALL BE COMPLETED PRIOR TO COMMENCEMENT OF DEMOLITION WORK. DEMOLITION WORK SHALL BE IN ACCORDANCE WITH THE CONSTRUCTION PHASE INTERUPTION OF SERVICE WILL NOT BE ALLOWED.
 - EXISTING RESTROOM BUILDING TO BE DEMOLISHED. CONTRACTOR TO VERIFY THE RESTROOM BUILDING IS A PART OF THE DEMOLITION PHASE UPON THE RESTROOM BUILDING AS A PART OF THE DEMOLITION PHASE OF THE RESTROOM BUILDING.



RESTROOM #16 MEZZANINE	RESTROOM #16 DEMOLITION SITE PLAN	SUBSTATION #5 YARD	NOT USED
SCALE 1/4"=1'-0"	SCALE 1"=10'-0"	SCALE 1/8"=1'-0"	SCALE NONE
2	1	3	4



owner approval	
DATE	PHASE

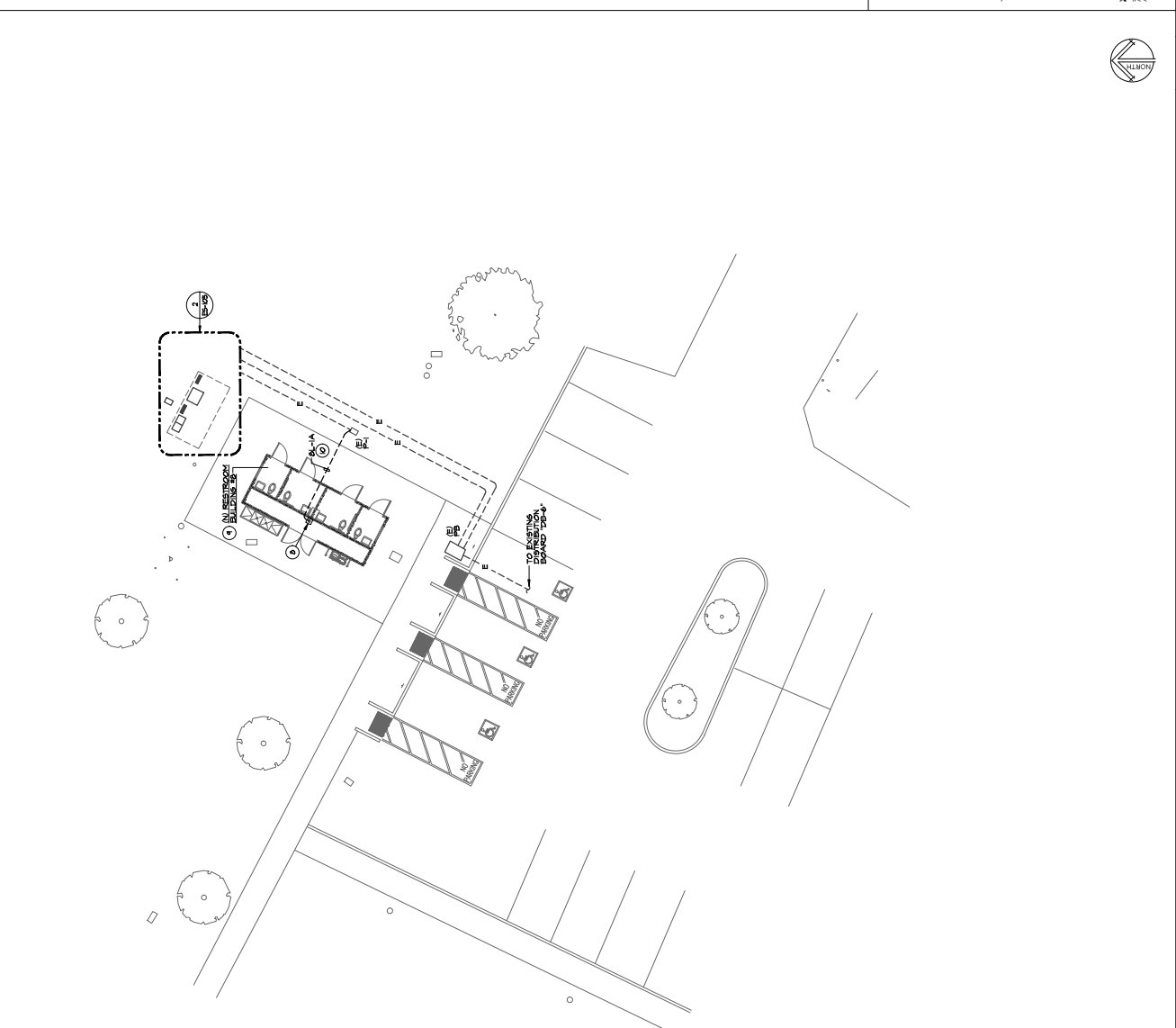
revisions/addenda	
DATE	COMMENT

SAN BERNARDINO COUNTY
PROJECT & FACILITIES MANAGEMENT DEPARTMENT
70 WESTROOM REMODEL
70 WESTROOM REMODEL
SAN BERNARDINO COUNTY PRADO RY CAMP
APN: 1057-201-10-0000
SHERMAN, CA 91708
SAN BERNARDINO COUNTY
365 NORTH ARROWHEAD AVE. THIRD FLOOR
SAN BERNARDINO, CA 92415-0184
CONTACT: SARETTA REED PHONE: 909-552-0427

PROJECT INFORMATION
PROJECT NO. 23000500A
DWG FILE: LMF
DRAWN BY: RES
CHECKED BY: RES
DRAWING SCALE: 1" = 1/4" @ 0'
DATE: 3-29-2024

SHEET NAME
**RESTROOM #8
REMODEL
SITE PLAN**
sheet number
ES-105

- PLAN NOTES:**
1. REFER TO GENERAL NOTES, SHEET E-001 FOR ADDITIONAL REQUIREMENTS.
 2. ALL CIRCUITS SERVING THE REMODEL AREA WHETHER IDENTIFIED ON PLAN OR NOT SHALL BE TRACED AND IDENTIFIED PRIOR TO START OF WORK. THE CONTRACTOR SHALL BE RESPONSIBLE FOR IDENTIFYING ALL CIRCUITS SERVING THE REMODEL WORK THAT SERVE AREAS OF THE REGIONAL PARK THAT ARE TO BE REMOVED OR MODIFIED. THE CONTRACTOR SHALL BE RESPONSIBLE FOR OPERATIONAL DURING THE CONSTRUCTION PHASE. INTERRUPTION OF SERVICE WILL NOT BE ALLOWED.
 3. REFER TO THE SINGLE LINE DIAGRAM, SHEET E-001, FOR READER INFORMATION. THE CONTRACTOR SHALL VERIFY THE LOCATION AND TYPE OF ELECTRICAL EQUIPMENT INDICATED ON THE SINGLE LINE DIAGRAM.
 4. CONDUIT AND WIRE INDICATED ON THE SINGLE LINE DIAGRAM WHETHER SHOWN ON THIS DRAWING OR NOT SHALL BE A PART OF THIS CONTRACT. THE CONTRACTOR SHALL VERIFY THE LOCATION AND TYPE OF CONDUIT ROUTING TO MEET THE INTENT OF THESE PLANS AND SPECIFICATIONS.
 5. CONDUIT ROUTING INDICATED ON THESE PLANS IS DIAGNOSTIC. ACTUAL CONDUIT ROUTING SHALL BE VERIFIED BY THE CONTRACTOR IN THE FIELD TO AVOID INTERFERING WITH EXISTING UTILITIES.
 6. IT SHALL BE THE CONTRACTOR'S RESPONSIBILITY TO MAINTAIN REQUIRED CLEARANCES BETWEEN UNDERGROUND ELECTRICAL CONDUITS AND EXISTING UTILITIES. THE CONTRACTOR SHALL VERIFY THE LOCATION AND TYPE OF EXISTING UTILITIES. THE CONTRACTOR SHALL BE RESPONSIBLE FOR OBTAINING ALL NECESSARY PERMITS AND SHALL BE COORDINATED IN THE FIELD WITH THE GENERAL CONTRACTOR AND THE CONTRACTOR TO PROVIDE ENGRAVED LABELS AT EACH RECEIPTABLE DATA OUTLET, ACTION BOX, DISCONNECT SWITCH, ETC. DISPLAYING THE LOCATION AND TYPE OF UTILITIES. THE CONTRACTOR SHALL BE RESPONSIBLE FOR OBTAINING ALL NECESSARY PERMITS AND SHALL BE COORDINATED IN THE FIELD WITH THE GENERAL CONTRACTOR AND THE CONTRACTOR TO PROVIDE ENGRAVED LABELS AT EACH RECEIPTABLE DATA OUTLET, ACTION BOX, DISCONNECT SWITCH, ETC. DISPLAYING THE LOCATION AND TYPE OF UTILITIES.
 7. MODULAR RESTROOM BUILDINGS ELECTRICAL SUB-UP / PANEL, 100' LOCATION CONTRACTOR TO PROVIDE 8" DIAMETER BLOCK OUT, WITH WIRE CHAMBERS FOR EXACT BLOCK-OUT LOCATION AND REQUIREMENTS PRIOR TO START OF WORK.
 8. CONTRACTOR TO MAKE ALL ELECTRICAL CONNECTIONS TO THE NEW BUILDING TO BE FULLY OPERABLE UPON COMPLETION OF REMODEL WORK.
 9. CONTRACTOR TO PROVIDE AND ENTER NEW CONDUIT CONDUITORS TO THE EXISTING FEEDER WITHIN EXISTING PULL BOX P-1.



RESTROOM #8 REMODEL SITE PLAN SCALE: 1"=1/4" @ 0'

RESTROOM #8 ELECTRICAL YARD SCALE: 1/4"=1' @ 0'



owner approval	
DATE	PHASE

revisions/adenda	
DATE	COMMENT

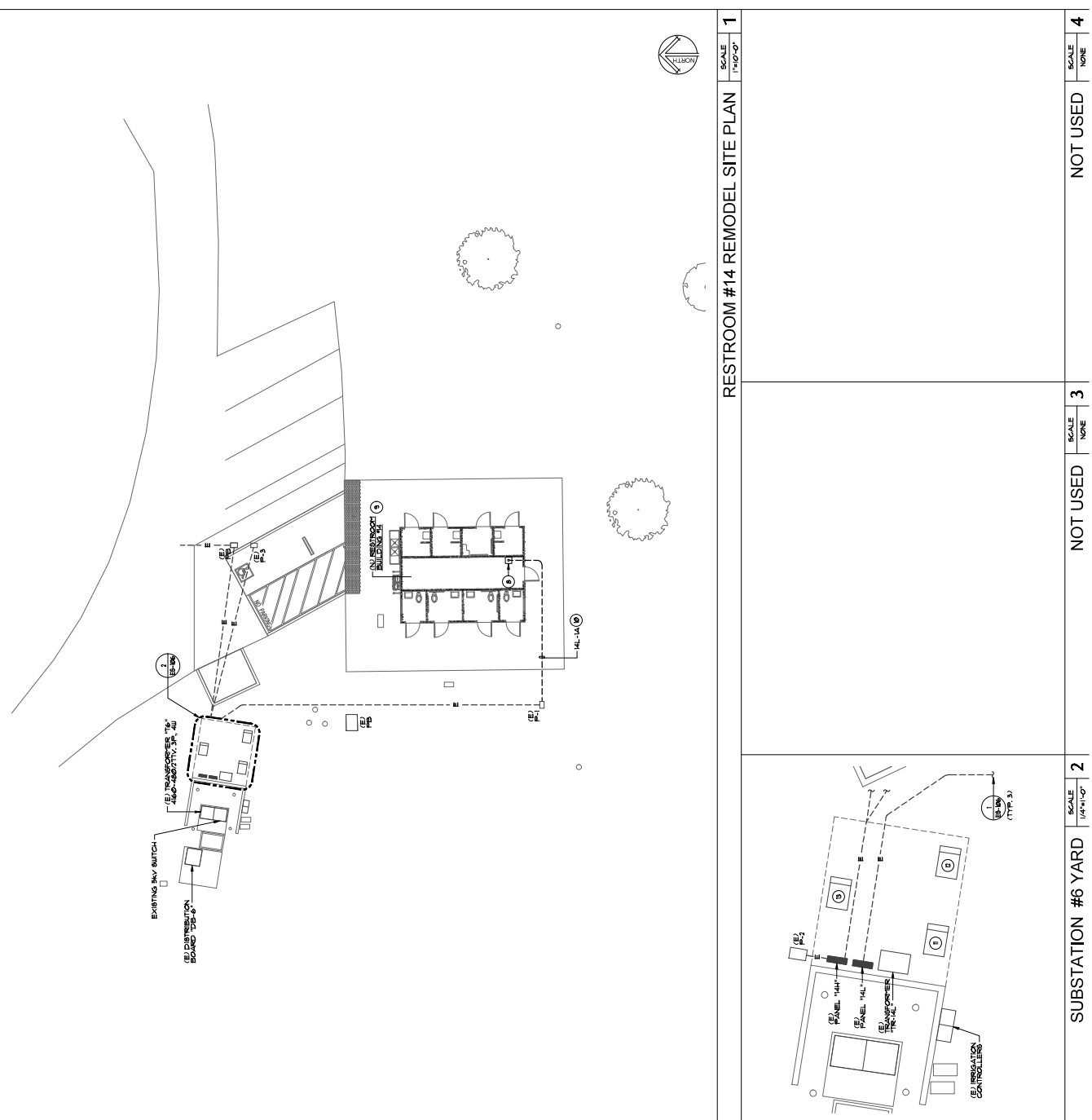
SAN BERNARDINO COUNTY PRADO RY CAMP
RESTROOM REMODEL
PROJECT & FACILITIES MANAGEMENT DEPARTMENT
SAN BERNARDINO COUNTY
365 NORTH ARROWHEAD AVE. THIRD FLOOR
SAN BERNARDINO, CA 92415-0184
CONTACT: SAHRETTA REED PHONE: 909-352-0427

PROJECT INFORMATION
PROJECT NO. 23000500A
DWG FILE: LMF
DRAWN BY: RES
CHECKED BY: 1" = 1/4" = 0"
DRAWING SCALE: 3-29-2024
DATE:

SHEET NAME
**RESTROOM #14
REMODEL
SITE PLAN**
sheet number
ES-106



- PLAN NOTES:**
1. REFER TO GENERAL NOTES, SHEET E-000 FOR ADDITIONAL REQUIREMENTS.
 2. ALL CIRCUITS SERVING THE REMODEL AREA WHETHER IDENTIFIED ON PLAN OR NOT SHALL BE TRACED AND IDENTIFIED PRIOR TO START OF REMODEL WORK THAT AFFECTS AREAS OF THE REGIONAL PARK THAT ARE TO BE REMODEL. THE CONTRACTOR SHALL BE RESPONSIBLE FOR OBTAINING NECESSARY PERMITS AND INFORMATION DURING THE CONSTRUCTION PHASE. INTERRUPTION OF SERVICE WILL NOT BE ALLOWED.
 3. REFER TO THE SINGLE LINE DIAGRAM, SHEET E-000, FOR READER INFORMATION. THE CONTRACTOR SHALL VERIFY THE LOCATION AND ELECTRICAL EQUIPMENT INDICATED ON THE SINGLE LINE DIAGRAM.
 4. CONDUIT AND WIRE INDICATED ON THE SINGLE LINE DIAGRAM WHETHER SHOWN ON THIS DRAWING OR NOT SHALL BE A PART OF THIS CONTRACT. THE CONTRACTOR SHALL VERIFY THE LOCATION AND SPECIFICATIONS OF ALL CONDUIT AND WIRE INDICATED ON THESE PLANS AND SPECIFICATIONS. ROUTING TO PREVENT THE INTENT OF THESE PLANS AND SPECIFICATIONS.
 5. CONDUIT ROUTING INDICATED ON THESE PLANS IS DIAGNOSTIC. ACTUAL CONDUIT ROUTING SHALL BE VERIFIED BY THE CONTRACTOR IN THE FIELD TO AVOID INTERFERING WITH EXISTING UTILITIES.
 6. IT SHALL BE THE CONTRACTOR'S RESPONSIBILITY TO MAINTAIN REQUIRED CLEARANCES BETWEEN UNDERGROUND ELECTRICAL CONDUITS AND EXISTING UTILITIES. THE CONTRACTOR SHALL VERIFY THE LOCATION AND SPECIFICATIONS OF ALL EXISTING UTILITIES AND BE COORDINATED IN THE FIELD WITH THE GENERAL CONTRACTOR AND THE CONTRACTOR TO PROVIDE ENGRAVED LABELS AT EACH RECEIPTABLE DATA OUTLET, JUNCTION BOX, DISCONNECT SWITCH, ETC. DISPLAYING THE LOCATION AND SPECIFICATIONS OF THE UTILITIES. RECEIPTABLE JUNCTION BOX DISCONNECT SWITCH, ETC.
 7. MODULAR RESTROOM BUILDING ELECTRICAL SUB UP / PANEL, "M".
 8. CONTRACTOR TO PROVIDE AND EXTEND NEW CONDUIT CONDUCTORS FROM THE EXISTING FEEDER WITH EXISTING PULL BOX PULL FEEDER TO THE EXISTING TRANSFORMER TR-1A, TR-1B, TR-1C, TR-1D, TR-1E, TR-1F, TR-1G, TR-1H, TR-1I, TR-1J, TR-1K, TR-1L, TR-1M, TR-1N, TR-1O, TR-1P, TR-1Q, TR-1R, TR-1S, TR-1T, TR-1U, TR-1V, TR-1W, TR-1X, TR-1Y, TR-1Z, TR-1AA, TR-1AB, TR-1AC, TR-1AD, TR-1AE, TR-1AF, TR-1AG, TR-1AH, TR-1AI, TR-1AJ, TR-1AK, TR-1AL, TR-1AM, TR-1AN, TR-1AO, TR-1AP, TR-1AQ, TR-1AR, TR-1AS, TR-1AT, TR-1AU, TR-1AV, TR-1AW, TR-1AX, TR-1AY, TR-1AZ, TR-1BA, TR-1BB, TR-1BC, TR-1BD, TR-1BE, TR-1BF, TR-1BG, TR-1BH, TR-1BI, TR-1BJ, TR-1BK, TR-1BL, TR-1BM, TR-1BN, TR-1BO, TR-1BP, TR-1BQ, TR-1BR, TR-1BS, TR-1BT, TR-1BU, TR-1BV, TR-1BW, TR-1BX, TR-1BY, TR-1BZ, TR-1CA, TR-1CB, TR-1CC, TR-1CD, TR-1CE, TR-1CF, TR-1CG, TR-1CH, TR-1CI, TR-1CJ, TR-1CK, TR-1CL, TR-1CM, TR-1CN, TR-1CO, TR-1CP, TR-1CQ, TR-1CR, TR-1CS, TR-1CT, TR-1CU, TR-1CV, TR-1CW, TR-1CX, TR-1CY, TR-1CZ, TR-1DA, TR-1DB, TR-1DC, TR-1DD, TR-1DE, TR-1DF, TR-1DG, TR-1DH, TR-1DI, TR-1DJ, TR-1DK, TR-1DL, TR-1DM, TR-1DN, TR-1DO, TR-1DP, TR-1DQ, TR-1DR, TR-1DS, TR-1DT, TR-1DU, TR-1DV, TR-1DW, TR-1DX, TR-1DY, TR-1DZ, TR-1EA, TR-1EB, TR-1EC, TR-1ED, TR-1EE, TR-1EF, TR-1EG, TR-1EH, TR-1EI, TR-1EJ, TR-1EK, TR-1EL, TR-1EM, TR-1EN, TR-1EO, TR-1EP, TR-1EQ, TR-1ER, TR-1ES, TR-1ET, TR-1EU, TR-1EV, TR-1EW, TR-1EX, TR-1EY, TR-1EZ, TR-1FA, TR-1FB, TR-1FC, TR-1FD, TR-1FE, TR-1FF, TR-1FG, TR-1FH, TR-1FI, TR-1FJ, TR-1FK, TR-1FL, TR-1FM, TR-1FN, TR-1FO, TR-1FP, TR-1FQ, TR-1FR, TR-1FS, TR-1FT, TR-1FU, TR-1FV, TR-1FW, TR-1FX, TR-1FY, TR-1FZ, TR-1GA, TR-1GB, TR-1GC, TR-1GD, TR-1GE, TR-1GF, TR-1GG, TR-1GH, TR-1GI, TR-1GJ, TR-1GK, TR-1GL, TR-1GM, TR-1GN, TR-1GO, TR-1GP, TR-1GQ, TR-1GR, TR-1GS, TR-1GT, TR-1GU, TR-1GV, TR-1GW, TR-1GX, TR-1GY, TR-1GZ, TR-1HA, TR-1HB, TR-1HC, TR-1HD, TR-1HE, TR-1HF, TR-1HG, TR-1HH, TR-1HI, TR-1HJ, TR-1HK, TR-1HL, TR-1HM, TR-1HN, TR-1HO, TR-1HP, TR-1HQ, TR-1HR, TR-1HS, TR-1HT, TR-1HU, TR-1HV, TR-1HW, TR-1HX, TR-1HY, TR-1HZ, TR-1IA, TR-1IB, TR-1IC, TR-1ID, TR-1IE, TR-1IF, TR-1IG, TR-1IH, TR-1II, TR-1IJ, TR-1IK, TR-1IL, TR-1IM, TR-1IN, TR-1IO, TR-1IP, TR-1IQ, TR-1IR, TR-1IS, TR-1IT, TR-1IU, TR-1IV, TR-1IW, TR-1IX, TR-1IY, TR-1IZ, TR-1JA, TR-1JB, TR-1JC, TR-1JD, TR-1JE, TR-1JF, TR-1JG, TR-1JH, TR-1JI, TR-1JJ, TR-1JK, TR-1JL, TR-1JM, TR-1JN, TR-1JO, TR-1JP, TR-1JQ, TR-1JR, TR-1JS, TR-1JT, TR-1JU, TR-1JV, TR-1JW, TR-1JX, TR-1JY, TR-1JZ, TR-1KA, TR-1KB, TR-1KC, TR-1KD, TR-1KE, TR-1KF, TR-1KG, TR-1KH, TR-1KI, TR-1KJ, TR-1KK, TR-1KL, TR-1KM, TR-1KN, TR-1KO, TR-1KP, TR-1KQ, TR-1KR, TR-1KS, TR-1KT, TR-1KU, TR-1KV, TR-1KW, TR-1KX, TR-1KY, TR-1KZ, TR-1LA, TR-1LB, TR-1LC, TR-1LD, TR-1LE, TR-1LF, TR-1LG, TR-1LH, TR-1LI, TR-1LJ, TR-1LK, TR-1LL, TR-1LM, TR-1LN, TR-1LO, TR-1LP, TR-1LQ, TR-1LR, TR-1LS, TR-1LT, TR-1LU, TR-1LV, TR-1LW, TR-1LX, TR-1LY, TR-1LZ, TR-1MA, TR-1MB, TR-1MC, TR-1MD, TR-1ME, TR-1MF, TR-1MG, TR-1MH, TR-1MI, TR-1MJ, TR-1MK, TR-1ML, TR-1MM, TR-1MN, TR-1MO, TR-1MP, TR-1MQ, TR-1MR, TR-1MS, TR-1MT, TR-1MU, TR-1MV, TR-1MW, TR-1MX, TR-1MY, TR-1MZ, TR-1NA, TR-1NB, TR-1NC, TR-1ND, TR-1NE, TR-1NF, TR-1NG, TR-1NH, TR-1NI, TR-1NJ, TR-1NK, TR-1NL, TR-1NM, TR-1NN, TR-1NO, TR-1NP, TR-1NQ, TR-1NR, TR-1NS, TR-1NT, TR-1NU, TR-1NV, TR-1NW, TR-1NX, TR-1NY, TR-1NZ, TR-1OA, TR-1OB, TR-1OC, TR-1OD, TR-1OE, TR-1OF, TR-1OG, TR-1OH, TR-1OI, TR-1OJ, TR-1OK, TR-1OL, TR-1OM, TR-1ON, TR-1OO, TR-1OP, TR-1OQ, TR-1OR, TR-1OS, TR-1OT, TR-1OU, TR-1OV, TR-1OW, TR-1OX, TR-1OY, TR-1OZ, TR-1PA, TR-1PB, TR-1PC, TR-1PD, TR-1PE, TR-1PF, TR-1PG, TR-1PH, TR-1PI, TR-1PJ, TR-1PK, TR-1PL, TR-1PM, TR-1PN, TR-1PO, TR-1PP, TR-1PQ, TR-1PR, TR-1PS, TR-1PT, TR-1PU, TR-1PV, TR-1PW, TR-1PX, TR-1PY, TR-1PZ, TR-1QA, TR-1QB, TR-1QC, TR-1QD, TR-1QE, TR-1QF, TR-1QG, TR-1QH, TR-1QI, TR-1QJ, TR-1QK, TR-1QL, TR-1QM, TR-1QN, TR-1QO, TR-1QP, TR-1QQ, TR-1QR, TR-1QS, TR-1QT, TR-1QU, TR-1QV, TR-1QW, TR-1QX, TR-1QY, TR-1QZ, TR-1RA, TR-1RB, TR-1RC, TR-1RD, TR-1RE, TR-1RF, TR-1RG, TR-1RH, TR-1RI, TR-1RJ, TR-1RK, TR-1RL, TR-1RM, TR-1RN, TR-1RO, TR-1RP, TR-1RQ, TR-1RR, TR-1RS, TR-1RT, TR-1RU, TR-1RV, TR-1RW, TR-1RX, TR-1RY, TR-1RZ, TR-1SA, TR-1SB, TR-1SC, TR-1SD, TR-1SE, TR-1SF, TR-1SG, TR-1SH, TR-1SI, TR-1SJ, TR-1SK, TR-1SL, TR-1SM, TR-1SN, TR-1SO, TR-1SP, TR-1SQ, TR-1SR, TR-1SS, TR-1ST, TR-1SU, TR-1SV, TR-1SW, TR-1SX, TR-1SY, TR-1SZ, TR-1TA, TR-1TB, TR-1TC, TR-1TD, TR-1TE, TR-1TF, TR-1TG, TR-1TH, TR-1TI, TR-1TJ, TR-1TK, TR-1TL, TR-1TM, TR-1TN, TR-1TO, TR-1TP, TR-1TQ, TR-1TR, TR-1TS, TR-1TT, TR-1TU, TR-1TV, TR-1TW, TR-1TX, TR-1TY, TR-1TZ, TR-1UA, TR-1UB, TR-1UC, TR-1UD, TR-1UE, TR-1UF, TR-1UG, TR-1UH, TR-1UI, TR-1UJ, TR-1UK, TR-1UL, TR-1UM, TR-1UN, TR-1UO, TR-1UP, TR-1UQ, TR-1UR, TR-1US, TR-1UT, TR-1UU, TR-1UV, TR-1UW, TR-1UX, TR-1UY, TR-1UZ, TR-1VA, TR-1VB, TR-1VC, TR-1VD, TR-1VE, TR-1VF, TR-1VG, TR-1VH, TR-1VI, TR-1VJ, TR-1VK, TR-1VL, TR-1VM, TR-1VN, TR-1VO, TR-1VP, TR-1VQ, TR-1VR, TR-1VS, TR-1VT, TR-1VU, TR-1VV, TR-1VW, TR-1VX, TR-1VY, TR-1VZ, TR-1WA, TR-1WB, TR-1WC, TR-1WD, TR-1WE, TR-1WF, TR-1WG, TR-1WH, TR-1WI, TR-1WJ, TR-1WK, TR-1WL, TR-1WM, TR-1WN, TR-1WO, TR-1WP, TR-1WQ, TR-1WR, TR-1WS, TR-1WT, TR-1WU, TR-1WV, TR-1WW, TR-1WX, TR-1WY, TR-1WZ, TR-1XA, TR-1XB, TR-1XC, TR-1XD, TR-1XE, TR-1XF, TR-1XG, TR-1XH, TR-1XI, TR-1XJ, TR-1XK, TR-1XL, TR-1XM, TR-1XN, TR-1XO, TR-1XP, TR-1XQ, TR-1XR, TR-1XS, TR-1XT, TR-1XU, TR-1XV, TR-1XW, TR-1XX, TR-1XY, TR-1XZ, TR-1YA, TR-1YB, TR-1YC, TR-1YD, TR-1YE, TR-1YF, TR-1YG, TR-1YH, TR-1YI, TR-1YJ, TR-1YK, TR-1YL, TR-1YM, TR-1YN, TR-1YO, TR-1YP, TR-1YQ, TR-1YR, TR-1YS, TR-1YT, TR-1YU, TR-1YV, TR-1YW, TR-1YX, TR-1YY, TR-1YZ, TR-1ZA, TR-1ZB, TR-1ZC, TR-1ZD, TR-1ZE, TR-1ZF, TR-1ZG, TR-1ZH, TR-1ZI, TR-1ZJ, TR-1ZK, TR-1ZL, TR-1ZM, TR-1ZN, TR-1ZO, TR-1ZP, TR-1ZQ, TR-1ZR, TR-1ZS, TR-1ZT, TR-1ZU, TR-1ZV, TR-1ZW, TR-1ZX, TR-1ZY, TR-1ZZ.



SECTION	SCALE	NOT USED	SCALE	NOT USED	SCALE	NOT USED	SCALE
1	1/4"=1'-0"	NOT USED	3	NOT USED	2	NOT USED	4



owner approval	
DATE	PHASE

revisions/addenda	
DATE	COMMENT

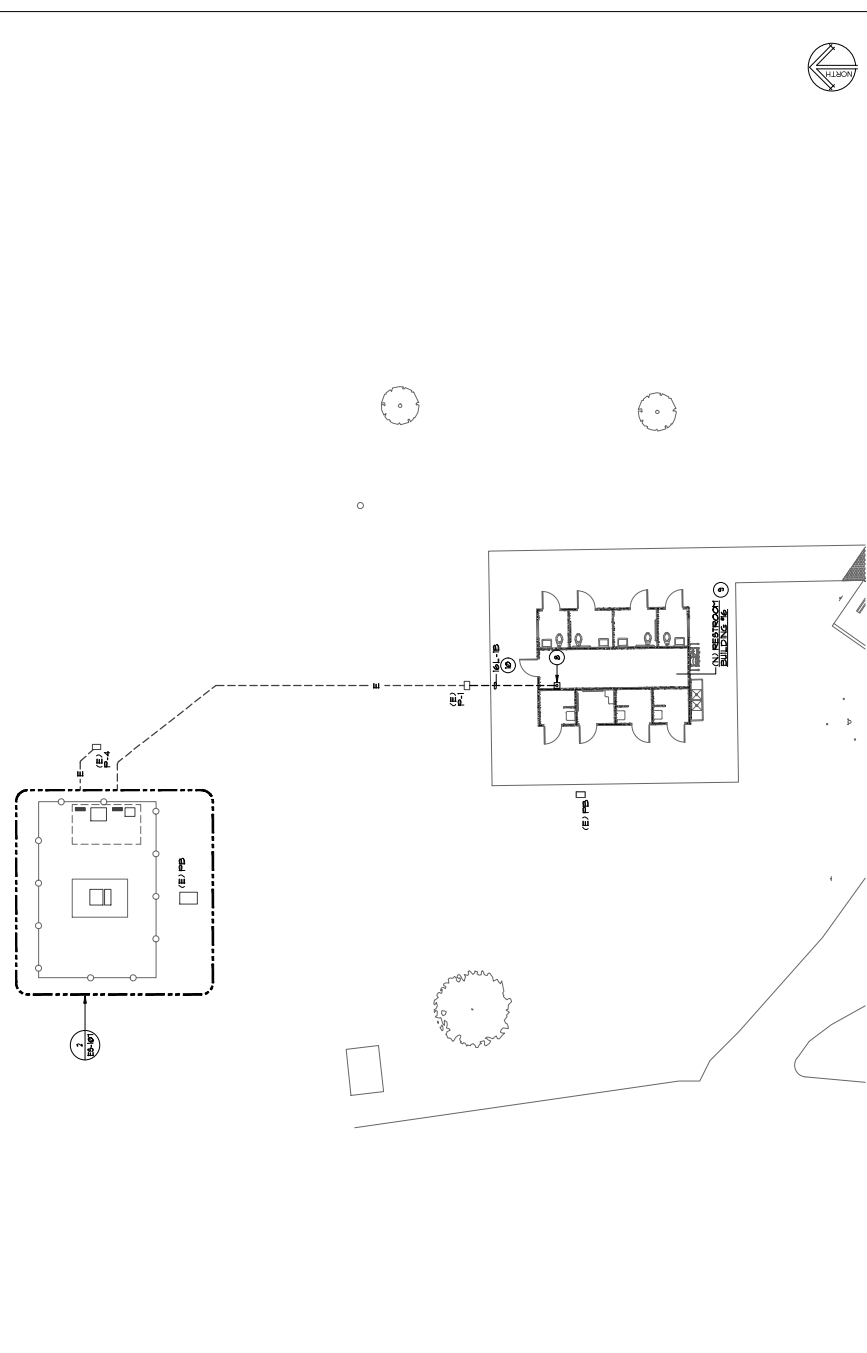
SAN BERNARDINO COUNTY PRADO RV CAMP
RESTROOM REMODEL
PROJECT & FACILITIES MANAGEMENT DEPARTMENT
SAN BERNARDINO COUNTY
365 NORTH ARROWHEAD AVE. THIRD FLOOR
SANTA ANA, CA 92705
APN: 1057-201-10-0000

PROJECT INFORMATION
PROJECT NO. 2300050ARA
DWG FILE: LMF
DRAWN BY: RES
CHECKED BY: RES
DRAWING SCALE: 1" = 10'-0"
DATE: 3-29-2024

SHEET NAME
**RESTROOM #16
REMODEL
SITE PLAN**
SHEET NUMBER
ES-107



- PLAN NOTES:**
1. REFER TO GENERAL NOTES, SHEET E-600 FOR ADDITIONAL REQUIREMENTS.
 2. ALL CIRCUITS SERVING THE REMODEL AREA WHETHER IDENTIFIED ON PLAN OR NOT SHALL BE TRACED AND IDENTIFIED PRIOR TO START OF REMODEL WORK THAT AFFECTS ANY OF THE REGIONAL PARKS THAT ARE ADJACENT TO THE PROJECT. ANY CHANGES TO THE REGIONAL PARKS OPERATION DURING THE CONSTRUCTION PHASE, INTERRUPTION OF SERVICE WILL NOT BE ALLOWED.
 3. REFER TO THE SINGLE LINE DIAGRAM, SHEET E-600, FOR FEEDER, ELECTRICAL EQUIPMENT, AND THE SINGLE LINE DIAGRAM FOR ELECTRICAL EQUIPMENT INDICATED ON THE SINGLE LINE DIAGRAM.
 4. CONDUIT AND WIRE INDICATED ON THE SINGLE LINE DIAGRAM WHETHER SHOWN ON THIS DRAWING OR NOT SHALL BE A PART OF THIS CONTRACT. ROUTING TO MEET THE INTENT OF THESE PLANS AND SPECIFICATIONS.
 5. CONDUIT ROUTING INDICATED ON THESE PLANS IS DIAGNOSTIC, ACTUAL ROUTING SHALL BE DETERMINED BY THE CONTRACTOR IN THE FIELD TO AVOID INTERFERING WITH EXISTING UTILITIES.
 6. IT SHALL BE THE CONTRACTOR'S RESPONSIBILITY TO MAINTAIN REQUIRED CLEARANCES BETWEEN UNDERGROUND ELECTRICAL CONDUITS AND EXISTING UTILITIES. THE CONTRACTOR SHALL BE RESPONSIBLE FOR OBTAINING ALL NECESSARY PERMITS AND BE COORDINATED IN THE FIELD WITH THE GENERAL CONTRACTOR AND THE CONTRACTOR TO PROVIDE ENGRAVED LABELS AT EACH RECEIPTABLE DATA OUTLET, ACTION BOX, DISCONNECT SWITCH, BUT DISPLAYING THE DATA OUTLET, ACTION BOX, DISCONNECT SWITCH, AND RECEIPTABLE JUNCTION BOX DISCONNECT SWITCH, ETC.
 7. MODULAR RESTROOM BUILDING ELECTRICAL STUB UP / PANEL, W/RT LOCATION CONTRACTOR TO PROVIDE 8" DIAMETER BLOCK OUT. CONTRACTOR TO PROVIDE 8" DIAMETER BLOCK OUT. CONTRACTOR TO PROVIDE EXACT METHOD FOR MOUNTING UP CONDUITS AT FOOTING LOCATIONS AND REQUIREMENTS PRIOR TO START OF WORK.
 8. CONTRACTOR TO MAKE ALL ELECTRICAL CONNECTIONS TO THE NEW BUILDING FROM EXISTING FEEDER WITHIN EXISTING PULL BOX P-1. CONTRACTOR TO PROVIDE AND LABEL NEW CONDUIT, CONDUITS, FEEDER (P-1, P-2) TO THE EXISTING FEEDER WITHIN EXISTING PULL BOX P-1. WORK.



SCALE	SCALE	SCALE	SCALE
1/4"=1'-0"	1/4"=1'-0"	1/4"=1'-0"	1/4"=1'-0"
2	3	4	1
SUBSTATION #5 YARD	NOT USED	NOT USED	RESTROOM #16 REMODEL SITE PLAN
NOT USED	NOT USED	NOT USED	NOT USED



owner approval	
initials	date
	09/09/08
	phase

revisions/addenda	
mark	date
△	09/09/08
△	
△	
△	

**SAN BERNARDINO COUNTY
PROJECT & FACILITIES MANAGEMENT DEPARTMENT**
16700 EUCLID AVENUE
CHINO, CA 91708
APN: 1057-201-10-0000

**SAN BERNARDINO COUNTY PRADO RV CAMP
RESTROOM REMODEL**
585 NORTH ARROWHEAD AVE. THIRD FLOOR
CHINO, CA 92415-0184
PHONE: 909-552-0427
CONTACT: SARETTA REED

project information
PROJECT NO: 123415
DWG FILE:
DRAWN BY:
CHECKED BY:
DRAWING SCALE:
DATE: 9-29-2014

sheet name
SITE PLAN

Sheet number
P-1
SHEET 42 OF 45 SHEETS

GENERAL NOTES

- All all piping to be cast iron or PVC where best code permits. Best piping may be selected steel, cast iron, copper or ABS as local codes permit. Soil and vent piping to slope a minimum of 1/4" per foot unless noted otherwise. ABS not allowed in fire rated construction.
- Domestic cold water piping to be schedule 80 PVC where copper, water and condensate piping above grade to be type M, hard copper wrought copper fittings. Solder and flux and contain no lead. Solder and flux with containing type M, hard copper wrought copper fittings. Solder and flux shall be applied in accordance with applicable code. All work shall be done in accordance with applicable code. Contractor to use only qualified labor and supervision for the installation of piping and equipment.
- All work shall conform with the 2022 UPC and all local codes. No work shall be covered until it has been inspected, tested and approved by inspector.
- Contractor shall provide connections and provide permits per contract. Any additional fees and permits will be at owners risk.
- Contractor shall verify size, depth, location and capacity of all utilities including meter location and cover meters prior to start of work.
- Contractor shall verify that all piping is installed as shown and as required by local codes and ordinances. Clear out to grade shall be in brocked box or equal.
- Coordinate work with all trades to avoid conflict and interferences.
- Verify all rough-in heights and locations with general contractor and/or architect.
- All pipes below ground shall be located away from bearing footings or as indicated on structural plans.
- When reduced pressure backflow preventer is indicated on plans as required by local code, when allowed pressure exceeds 80 PSIG, install approved pressure regulating valve with relief valve.
- Contractor shall verify that equipment and fixtures will physically fit in the locations indicated.
- All connections of the cold water piping shall be made with non-combustible material of an equal or higher strength and shall be completely stopped. Refer to architectural plans to identify the notes with each new fixture.
- Contractor shall include (but not limited to) all fittings, valves, fittings and fixture supports associated with each new fixture.
- Each fixture shall have its own shut off valve(s). Valves to be located below or adjacent to the fixture. R valves shall be located above the fixture. All shut off valves shall be within 6" of cover the utility. All shut off valves shall be labeled.
- All gas piping to be schedule 40 black steel with threaded male/female. Final connection to each gas appliance shall be with an approved flexible connection and shall not move. When the gas connection to the appliance is within 6" of the appliance, the gas connection shall be made with a flexible connection and not enter the cabinet. All valves, unions, etc. shall be the same size as the piping unless otherwise specified. Unions shall be approved for use above ground and shall be installed prior to equipment connections. Install location shall be indicated on architectural drawings and notes.
- All plumbing vents shall terminate not less than 10 feet away from or at least 3 feet above any window, door, air conditioning unit, or other opening in the exterior wall of the building.
- Install all exposed drain piping below landings and sills with "ventilation".
- Compressed air piping may be copper or galv. steel, verify with general contractor or owner.
- All pipes abutting to floor sills shall have the minimum air gap as required by the 2022 UPC.
- WATER SHIPY AND BRIM SHIPY UNDER LAWNDRIS AND SINKS SHALL BE INSULATED OR OTHERWISE CONFIGURED TO PROTECT AGAINST CONTACT. THESE SHALL BE NO SWAMP OR ABRASIVE SURFACES UNDER LAUNDRIES AND SINKS.
- Contractor shall provide owner with all required manuals for the equipment per the contract. Final listing of equipment shall be provided for the use of the owner for the life of the equipment.
- These plans are of schematic form and are drawn for maximum clarity. Changes may be necessary for conditions, restrictions, economics and efficiency.



SITE PLAN
N.I.S. FOR REFERENCE ONLY



R.E.O. ENGINEERING
14069 Van Arman Blvd. #14 - 407
San Bruno, CA 94066
(857) 774-8855



owner approval	
initials	date
	00/00/00

revisions/addenda		
mark	date	comment
	00/00/00	--

SAN BERNARDINO COUNTY PRADO RV CAMP
16200 EUCLID AVENUE
CHINO, CA 91708
AFN: 1057-201-10-0000

SAN BERNARDINO COUNTY
PROJECT & FACILITIES MANAGEMENT DEPARTMENT
385 NORTH ARROWHEAD AVE. THIRD FLOOR
SAN BERNARDINO, CA 92415-0184
CONTACT: SARETTA REED PHONE: 909-552-0427

project information	
PROJECT NO:	T2415
DWG FILE:	
DATE:	3-25-2014

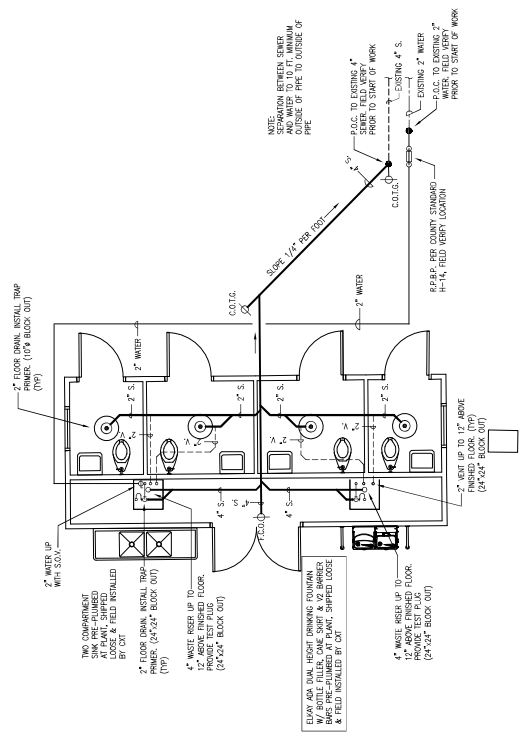
Sheet name
RV REST ROOM #1

Sheet number
P-2

SHEET 43 OF 45 SHEETS



SITE PLAN
SCALE: 1/8" = 1'-0"



PLUMBING PLAN
SCALE: 1/4" = 1'-0"

NOTE: APPROXIMATELY 2" DIA. CEMENT WATER MAIN TO BE FOUND ALONG COURSE OF PIPE TO OUTSIDE OF PIPE

2" WATER UP WITH S.O.V.
2" WASTE RISER UP TO 12" ABOVE FINISHED FLOOR (24"x24" BLOCK OUT)

2" FLOOR DRAIN, INSTALL TRAP PRIMER (10"x BLOCK OUT)

THIS COMPARTMENT SHOWN PRE-PLUMBED AND ALL WASTES SHALL BE INSTALLED BY C/P
2" FLOOR DRAIN, INSTALL TRAP PRIMER (24"x24" BLOCK OUT)
12" ABOVE FINISHED FLOOR
4" WASTE RISER UP TO 12" ABOVE FINISHED FLOOR (24"x24" BLOCK OUT)

EVERY VAN SHALL USE THE FOLLOWING EQUIPMENT: W/ BOTTLE JELLY, ONE SHIRT & 1/2 BASKET BARS PRE-PLUMBED AT PLANT, SHIPPED LOOSE & FIELD INSTALLED BY C/P

4" WASTE RISER UP TO 12" ABOVE FINISHED FLOOR (24"x24" BLOCK OUT)
2" WASTE RISER UP TO 12" ABOVE FINISHED FLOOR (24"x24" BLOCK OUT)

2" WATER
SLOPE: 1/4" PER FOOT
C.O.T.C.
2" WATER
R.P.A.P. PER COUNTY STANDARD: H=1%, FIELD VERIFY LOCATION
C.O.T.C.
2" WATER
P.A.C. TO EXTERIOR, 4" SLOPE, FIELD VERIFY PRIOR TO START OF WORK
P.A.C. TO EXTERIOR, 2" SLOPE, FIELD VERIFY PRIOR TO START OF WORK

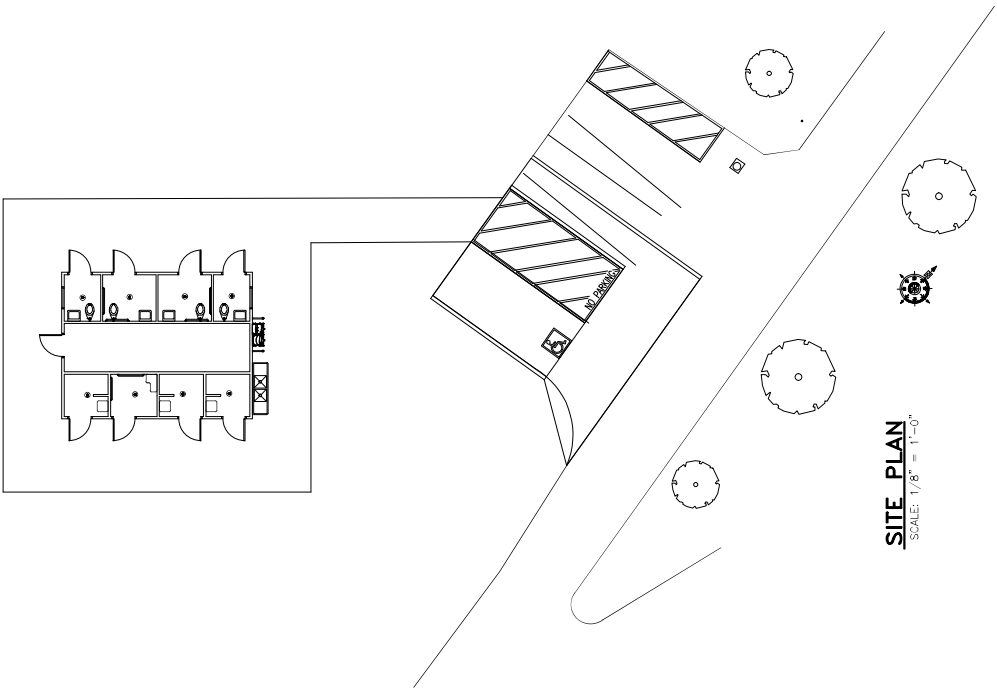
2" WATER
P.A.C. TO EXTERIOR, 4" SLOPE, FIELD VERIFY PRIOR TO START OF WORK



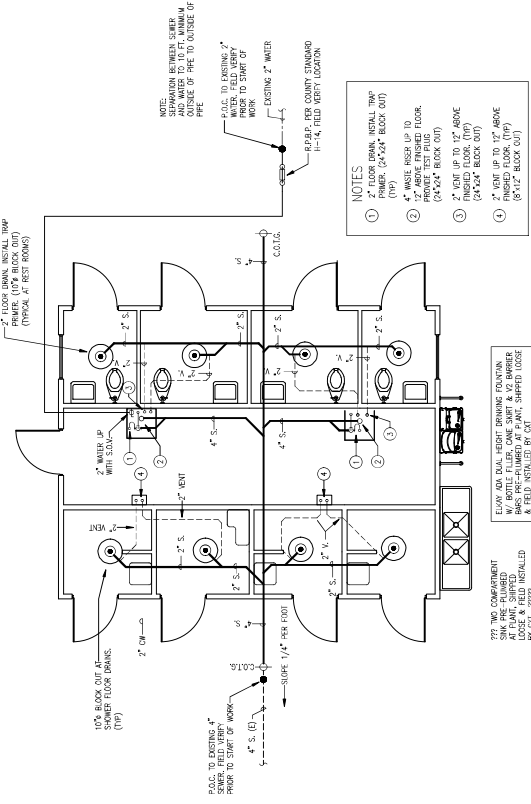
owner approval		
initials	date	
	06/07/08	
revisions/addenda		
mark	date	comment
1	06/07/08	
2	06/07/08	
3	06/07/08	
4	06/07/08	

SAN BERNARDINO COUNTY
PROJECT & FACILITIES MANAGEMENT DEPARTMENT
RESTROOM REMODEL
16700 EUCLID AVENUE
CHINO, CA 91708
APN: 1057-201-10-0000
CONTACT: SARETTA REED PHONE: 909-552-0427

PROJECT INFORMATION
PROJECT NO: 12415
DWG FILE: 12415-01-01
CHECKED BY:
DRAWING SCALE:
DATE: 3-26-2014



SITE PLAN
SCALE: 1/8" = 1'-0"



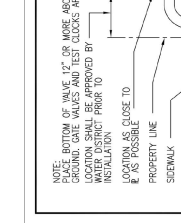
PLUMBING PLAN
SCALE: 1/4" = 1'-0"

SEE TWO COMPARTMENT
W/ BOTTLE FILLER, ONE SHIRT & 1/2 BARRIER
AT FLOOR SHIPPED
& FIELD INSTALLED
BY COT 11023

ELAV 60A DUAL HEIGHT DRINKING FOUNTAIN
W/ BOTTLE FILLER, ONE SHIRT & 1/2 BARRIER
AT FLOOR SHIPPED
& FIELD INSTALLED
BY COT 11023

NOTE:
1. SEPARATION BETWEEN SHIRT
PRIMER, (10" BLOCK OUT)
OUTSIDE OF PIPE TO OUTSIDE OF
PIPE
P.A.C. TO EXISTING 2" WATER
PIPE TO START OF
WORK
P.P.P.P. PER COUNTY STANDARD
11-14, FIELD VERIFY LOCATION

- NOTES**
- 2" FLOOR DRAIN, INSTALL 2" TPW PRIMER, (24x24" BLOCK OUT) (1P)
 - 2" WATER UP WITH 5.0A" (1P)
 - 2" VENT UP TO ROOF (1P)
 - 2" VENT UP TO 12" ABOVE FINISHED FLOOR, (1P) (24x24" BLOCK OUT)

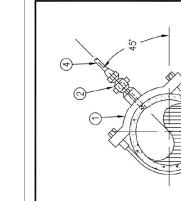


- NOTES:**
- PLACE BOTTOM OF VALVE 1/2" OR MORE ABOVE FINISHED GRADE & SURROUNDING GRADE SHALL BE APPROVED BY WATER DISTRICT PRIOR TO INSTALLATION
 - "APPROVED" REDUCED PRESSURE PRINCIPLE BACKFLOW PREVENTION DEVICE
 - RESTRICT WATER SUPPLY - NO CONNECTION OR TEES BETWEEN METER AND DEVICE

CONNECTION REQUIREMENTS

SERVICE OUTLET	SIZE OF A.C. MAIN	SIZE OF A.C. MAIN	OVER
1"	FIG. B	FIG. 3	FIG. A
1-1/4"	FIG. B	FIG. 3	FIG. B
1-1/2"	FIG. B	FIG. 3	FIG. B
2"	FIG. B	FIG. 3	FIG. B

NOTE:
1. IF TWO TAPS ARE MADE, ONE ON EACH SIDE OF THE MAIN, THEY SHALL BE SEPARATED BY A MINIMUM OF TWO (2) FEET (MEASURED ALONG THE CENTERLINE OF THE MAIN). MAKE TAP A MINIMUM OF TWO (2) FEET FROM THE END OF THE PIPE.
2. PIPE THREADS SHALL BE CLEAN AND SHARP AND SEALED WITH AN APPROVED JOINT COMPOUND.



CONNECTION REQUIREMENTS

SERVICE OUTLET	SIZE OF A.C. MAIN	SIZE OF A.C. MAIN	OVER
1"	FIG. B	FIG. 3	FIG. A
1-1/4"	FIG. B	FIG. 3	FIG. B
1-1/2"	FIG. B	FIG. 3	FIG. B
2"	FIG. B	FIG. 3	FIG. B

NOTE:
1. IF TWO TAPS ARE MADE, ONE ON EACH SIDE OF THE MAIN, THEY SHALL BE SEPARATED BY A MINIMUM OF TWO (2) FEET (MEASURED ALONG THE CENTERLINE OF THE MAIN). MAKE TAP A MINIMUM OF TWO (2) FEET FROM THE END OF THE PIPE.
2. PIPE THREADS SHALL BE CLEAN AND SHARP AND SEALED WITH AN APPROVED JOINT COMPOUND.

OFFICE OF SPECIAL DISTRICTS
COUNTY OF SAN BERNARDINO

REDUCED PRESSURE PRINCIPLE BACKFLOW DEVICE

APPROVAL: GARY MARTIN, DISTRICT ENGINEER, DATE: 3-16-2014, DRAWING NUMBER: H-14

REVISED

OFFICE OF SPECIAL DISTRICTS
COUNTY OF SAN BERNARDINO

SERVICE CONNECTIONS TO WATER MAINS

APPROVAL: GARY MARTIN, DISTRICT ENGINEER, DATE: 3-16-2014, DRAWING NUMBER: H-9

REVISED

TECH. SPEC. REFERENCE
MDS-SWISS - SEW070



owner approval	
initials	phase
	--

revisions/addenda		
mark	date	comment
△	10/30/08	--
△		
△		
△		

SAN BERNARDINO COUNTY
RESTROOM REMODEL
16700 EUCLID AVENUE
CHINO, CA 91708
APN: 1057-201-10-0000

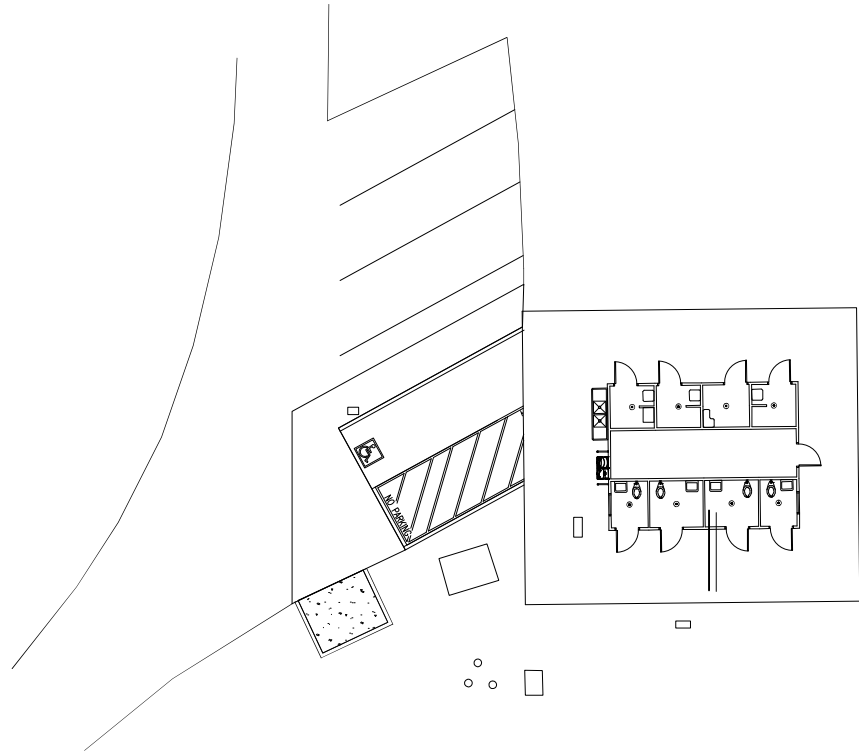
SAN BERNARDINO COUNTY PRADO RV CAMP
PROJECT & FACILITIES MANAGEMENT DEPARTMENT
SAN BERNARDINO, CA 92415-0184
CONTACT: SARETTA REED PHONE: 908-652-4427

project information
PROJECT NO: 12345
DWG FILE:
DRAWN BY:
CHECKED BY:
DRAWING SCALE:
DATE: 3-28-2014

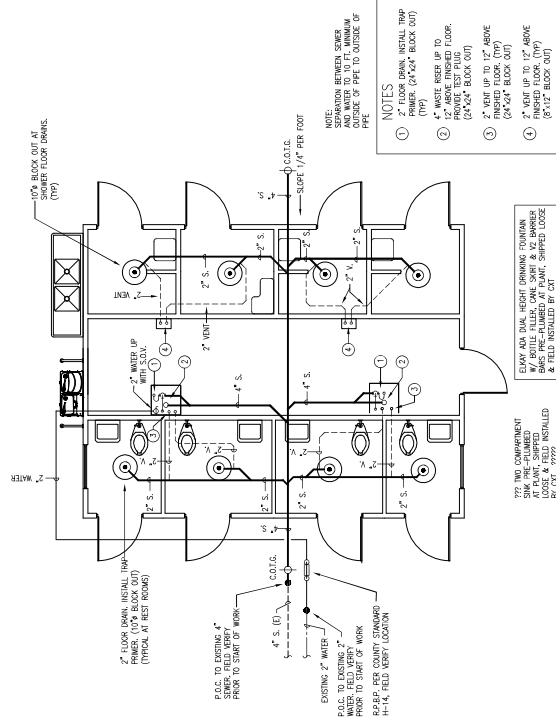
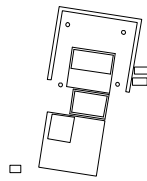
sheet name
RV REST ROOM #3

sheet number
P-4

SHEET 45 OF 45 SHEETS



SITE PLAN
SCALE: 1/8" = 1'-0"



PLUMBING PLAN
SCALE: 1/4" = 1'-0"



owner approval	
initials	phase
	--

revisions/addenda		
mark	date	comment
△	10/30/08	--
△		
△		
△		

SAN BERNARDINO COUNTY
RESTROOM REMODEL
16700 EUCLID AVENUE
CHINO, CA 91708
APN: 1057-201-10-0000

SAN BERNARDINO COUNTY PRADO RV CAMP
PROJECT & FACILITIES MANAGEMENT DEPARTMENT
SAN BERNARDINO, CA 92415-0184
CONTACT: SARETTA REED PHONE: 908-652-4427

project information
PROJECT NO: 12345
DWG FILE:
DRAWN BY:
CHECKED BY:
DRAWING SCALE:
DATE: 3-28-2014

sheet name
RV REST ROOM #3

sheet number
P-4

SHEET 45 OF 45 SHEETS