



**SAN BERNARDINO COUNTY
SOLID WASTE MANAGEMENT DIVISION**
222 West Hospitality Lane, 2nd Floor
San Bernardino, CA 92415-0017
Fax: 909-386-8900

ADDENDUM NO. 3

NORTH SCALE HOUSE IMPROVEMENTS AT THE MID VALLEY SANITARY LANDFILL

JUNE 23, 2023

~~BID OPEN: 10:00A.M. APRIL 20, 2023~~

~~BID OPEN: 10:00A.M. MAY 4, 2023~~

~~BID OPEN: 10:00A.M. JUNE 28, 2023~~

BID OPEN 10:00 A.M. July 20 2023

The following changes and/or additions shall be made to the Plans and Bid Documents for the Mid-Valley Sanitary Landfill North Scalehouse Improvements. All other requirements of the Plans and Bid Documents shall remain the same.

The following changes shall be made part of the Contract Documents and the Bidder shall acknowledge receipt thereof on the Bid Proposal.

REVISED BID DUE DATE

1. The Bid Opening Date has been modified as follows:

“Notice is hereby given that the San Bernardino County, Department of Public Works -Solid Waste Management Division on behalf of the Board of Supervisors of the San Bernardino County, California will receive sealed bids no later than **10:00 a.m. on Thursday, April 20, 2023, Thursday, May 4, 2023, Wednesday, June 28, 2023, Thursday, July 20, 2023**, in the Department of Public Works, Solid Waste Management Division offices, located at 222 W. Hospitality Lane, 2nd Floor, San Bernardino, California, 92415-0017, at which time the bids will be publicly opened and declared for the North Scale house Improvements at the Mid-Valley Sanitary Landfill in Rialto, California. Bids received after this time will not be considered.”

2. A new deadline for questions has been established. All questions shall be submitted, in writing, no later than **5:00 p.m., Monday, July 10, 2023.**

PROJECT PLAN AND SPECIFICATION REVISIONS

1. Revised Plan Sheets C-100, C-103, C-501, and E-101 are included in Attachment 1 to this Addendum No. 3. Revisions to the plans are noted by revision clouds. Revisions incorporate the inclusion of post/bollard for mounting electronic equipment.
2. Attachment 2 to this Addendum No. 3 includes an updated Bid schedule which adds bid item 23A and revises the estimated quantity for bid item 24.

GENERAL

1. Attachment 3 to this Addendum No. 3 includes mandatory pre-bid sign-in sheets.

The addition of these requirements shall be considered in concert with existing documents in preparation of bids. If you have any questions, please contact me at (909) 386-8701.

Marc A. Rodabaugh

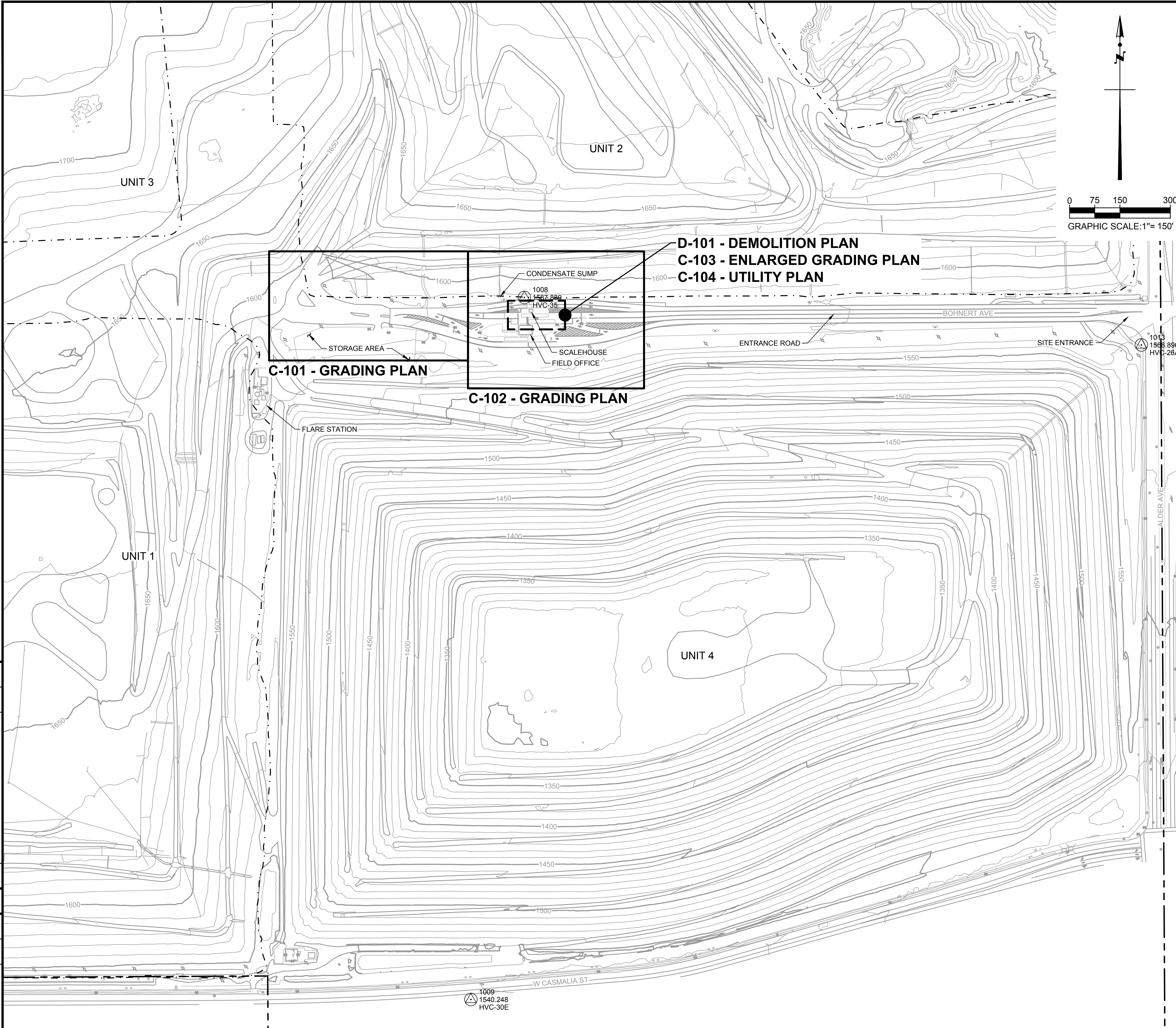
MARC RODABAUGH, P.E.,
Engineering Manager
Solid Waste Management Division

ATTACHMENT NO. 1

**MID-VALLEY SANITARY LANDFILL
NORTH SCALEHOUSE IMPROVEMENTS**

REVISED PLAN SHEETS

P:\San Bernardino County\Mid-Valley\Scalehouse Replacement\CAD\Sheet\Res-C-100 Site Plan And Sheet Index.dwg 6/21/2023 1:17 PM



CONSTRUCTION NOTES

- 1 PROTECT IN PLACE
- 2 CLEAR AND GRUB
- 3 DEMOLISH AND DISPOSE
- 4 REMOVE AND RELOCATE
- 5 GRADE AS SHOWN
- 6 CONSTRUCT AC PAVEMENT PER _____ 1 C-501
- 7 CONSTRUCT PCC PAVEMENT/ SIDEWALK PER _____ 2 C-501
- 8 CONSTRUCT PCC RIBBON GUTTER PER _____ 6 C-501
- 9 CONSTRUCT 18" THICK RIPRAP PAD PER _____ 3 C-501
- 10 SAWCUT AND JOIN TO EXISTING AC PAVEMENT PER _____ 4 C-501
- 11 FURNISH AND INSTALL SCALEHOUSE PER SHEET C-201
- 12 FURNISH AND INSTALL UTILITIES PER SHEET C-104
- 13 CONSTRUCT AC PAVEMENT THICKENED EDGE PER _____ 5 C-501
- 14 PAINT SOLID 4" WIDE WHITE STRIPE
- 15 CONSTRUCT SCALEHOUSE FOUNDATION PER _____ 2 S-100
- 16 CONSTRUCT BUILDING PROTECTION SYSTEM PER _____ 1 C-502
- 17 CONSTRUCT BOLLARD PER _____ 7 C-501
- 18 CONSTRUCT CONCRETE CURB A1-6 PER SSPWC STD PLAN 120-3. HEIGHT PER PLAN.
- 19 CONSTRUCT AC DIKE PER _____ 5 C-501
- 20 ABANDON IN PLACE
- 21 CONSTRUCT CONCRETE PLUG IN THE END OF PIPE LEFT IN PLACE
- 22 INSTALL 10'-6" HIGH 4" DIAMETER BOLLARD PER A PLUMB POLE AXIS. DISTANCE FROM SCALE TO BE VERIFIED WITH OWNER PRIOR TO INSTALLATION 8 C-501

SURVEY CONTROL POINTS

PT NO.	NORTHING	EASTING	ELEV.
* 1001	1877616.73	6733618.44	1663.22
+* 1003	1872968.10	6733650.41	1548.76
* 1004	1877620.17	6734936.15	1658.68
* 1005	1872327.56	6734968.47	1527.02
* 1006	1877642.29	6735628.59	1651.55
* 1007	1876406.66	6735864.13	1650.55
1008	1875005.78	6735728.35	1587.89
1009	1872915.87	6735569.26	1540.25
* 1011	1877606.23	6737463.90	1635.20
* 1012	1875672.56	6737738.19	1588.12
+ 1013	1874864.20	6737564.52	1568.90
* 1014	1872807.87	6737668.09	1525.48
* 1015	1877620.03	6738236.94	1630.31
* 1018	1875510.59	6738943.51	1574.69

* NOT SHOWN ON MAP
+ ENTRANCE SURVEY CONTROL

ABBREVIATIONS

AC	ASPHALT CONCRETE
CL	CENTER LINE
CMB	CRUSHED MISCELLANEOUS BASE
CY	CUBIC YARD
EG	EXISTING GRADE
FF	FINISHED FLOOR
FG	FINISHED GRADE
FL	FLOWLINE
FS	FINISHED SURFACE
GB	GRADEBREAK
HP	HIGH POINT
IN	INCH
LF	LINEAL FEET
MIN	MINIMUM
MUTCD	MANUAL ON UNIFORM TRAFFIC CONTROL DEVICES
NTS	NOT TO SCALE
PCC	PORTLAND CEMENT CONCRETE
SHT	SHEET
STA	STATION
STD	STANDARD
SY	SQUARE YARD
TC	TOP OF CURB
TF	TOP OF FOOTING
TG	TOP OF GRATE
TV	TOP OF V-DITCH
TYP	TYPICAL
WWM	WELDED WIRE MESH

FLOORPLAN NOTES

- 1 32" x 80" DOOR - 2.5" THICK
- 2 SERVICE WINDOW (2 TOTAL)
- 3 14" DEEP SHELF (34" AFF)
- 4 3" CORD ACCESS HOLES (2 TOTAL)
- 5 RECEPTACLE (21 TOTAL)
- 6 JUNCTION BOX (2 TOTAL)
- 7 LOAD CENTER
- 8 ELECTRICAL CABINET
- 9 OCCUPANCY SENSOR SWITCH
- 10 EXTERIOR LED WALL LIGHTS (4 TOTAL)
- 11 AIR CONDITIONER
- 12 THERMOSTAT
- 13 1' X 4' LED RECESSED LIGHT (3 TOTAL)
- 14 OVERHANG
- 15 DOWNSPOUTS (2 TOTAL)
- 16 SWITCH FOR EXTERIOR WALL LIGHTS
- 17 ATTIC VENTS
- 18 A/C RECEPTACLE
- 19 ANCHOR CLIPS (4 TOTAL)
- 20 CONTINUOUS INSULATION PANELS
- 21 COMPUTER CABINET
- 22 TRANSACTION WINDOW SHADE (2 TOTAL)
- 23 TRANSACTION WINDOW AWNING (2 TOTAL)
- 24 BULLET RESISTANT TRANSACTION WINDOW GLASS
- 25 ETHERNET PORT
- 26 WINDOW (4 TOTAL)
- 27 SECURITY CAMERA (4 TOTAL)
- 28 LOUD SPEAKER (2 TOTAL)
- 29 CONVEX MIRROR (2 TOTAL)
- 30 TRAFFIC SIGNAL
- 31 METHANE SENSOR
- 32 HYDROGEN SULFIDE SENSOR

LEGEND

---	APPROXIMATE LIMIT OF PROPERTY LINE
- - - - -	LIMIT OF REFUSE
- . - . -	LIMIT OF GRADING / DAYLIGHT
- - - - -	GRADE BREAK
- - - - -	SAWCUT LINE
---	RIDGE LINE
---	C --- EXISTING COMMUNICATIONS LINE
---	E --- EXISTING ELECTRICAL LINE
---	FLOWLINE
---	EXISTING MAJOR CONTOUR
---	EXISTING MINOR CONTOUR
---	PROPOSED MAJOR CONTOUR
---	PROPOSED MINOR CONTOUR
---	PROPOSED PCC PAVEMENT
---	PROPOSED AC PAVEMENT
---	PROPOSED CMB PAD
⊙	CONTROL POINT

MARK	CHANGES	RESIDENT ENGINEER	DATE
	NO CHANGES		
FIELD CHANGES			



TETRA TECH
21700 Copley Drive, Suite 200,
Diamond Bar, CA 91765
TEL 909.860.7777 FAX 909.860.8017

PREPARED UNDER THE SUPERVISION OF:

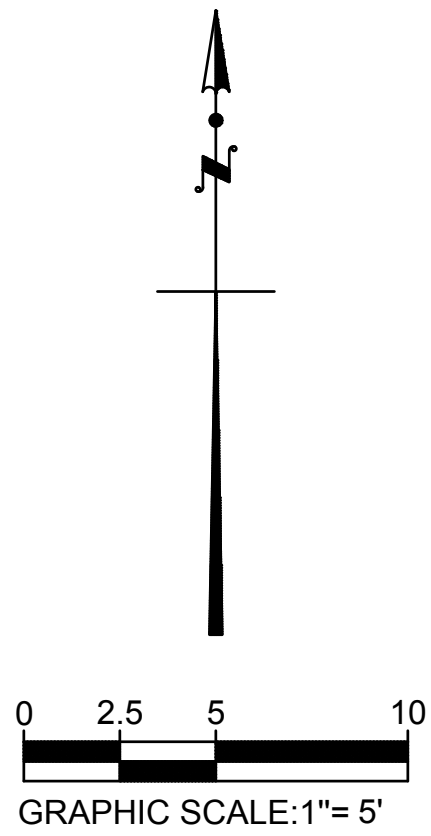
06-13-2022
DATE



SAN BERNARDINO COUNTY DEPARTMENT OF PUBLIC WORKS			
DRAWN BY M.R.P.	DESIGNED BY D.L.L.	PROJ. ENGR G.E.S.	RECOMMENDED / APPROVED BY
SUBMITTED BY		CHIEF ENGINEER	DATE
PROJECT MANAGER		DEPUTY DIRECTOR	DATE

MID-VALLEY SANITARY LANDFILL SITE PLAN AND SHEET INDEX NORTH SCALEHOUSE IMPROVEMENTS					
DATE JUNE 2022	DWG NO. C-100 SITE PLAN AND SHEET INDEX	SCALE AS SHOWN	SHT. NO. C-100	TOT. SHT'S. 2 OF 17	

DATE OF TOPOGRAPHY: JULY 1, 2020 SUPPLEMENTED WITH AUGUST 23, 2020 AND OCTOBER 25, 2020 FIELD SURVEYS



CONSTRUCTION NOTES

- 7 CONSTRUCT PCC PAVEMENT / SIDEWALK PER 2 C-501
10 SAWCUT AND JOIN TO EXISTING AC PAVEMENT PER 4 C-501
11 FURNISH AND INSTALL SCALEHOUSE PER SHEET C-201
12 FURNISH AND INSTALL UTILITIES PER SHEET C-104
14 PAINT SOLID 4" WIDE WHITE STRIPE 2 S-100
15 CONSTRUCT SCALEHOUSE FOUNDATION PER 2 S-100
16 CONSTRUCT BUILDING PROTECTION SYSTEM PER 1 C-502
17 CONSTRUCT BOLLARD PER 7 C-501
18 CONSTRUCT CONCRETE CURB A1-6 PER SSPWC STD PLAN 120-3. HEIGHT PER PLAN
22 INSTALL 10'-8" HIGH 4" DIAMETER BOLLARD PER A PLUMB POLE AXIS. DISTANCE FROM SCALE TO BE VERIFIED WITH OWNER PRIOR TO INSTALLATION 8 C-501

LEGEND

- LIMIT OF GRADING / DAYLIGHT
--- GRADE BREAK
E EXISTING ELECTRICAL LINE
C EXISTING COMMUNICATIONS LINE
W EXISTING WATER LINE
SS EXISTING SEWER LINE
--- FLOWLINE
-2.5 EXISTING MAJOR CONTOUR
- EXISTING MINOR CONTOUR
-2.5 PROPOSED MAJOR CONTOUR
- PROPOSED MINOR CONTOUR
--- PROPOSED PCC PAVEMENT

MARK	CHANGES	RESIDENT ENGINEER	DATE
	NO CHANGES		
FIELD CHANGES			



TETRA TECH
21700 Copley Drive, Suite 200,
Diamond Bar, CA 91765
TEL 909.860.7777 FAX 909.860.8017



SAN BERNARDINO COUNTY
DEPARTMENT OF PUBLIC WORKS

DRAWN BY M.R.P.	DESIGNED BY D.L.L.	PROJ. ENGR G.E.S.	RECOMMENDED / APPROVED BY
SUBMITTED BY	CHIEF ENGINEER	DATE	
PROJECT MANAGER	DEPUTY DIRECTOR	DATE	

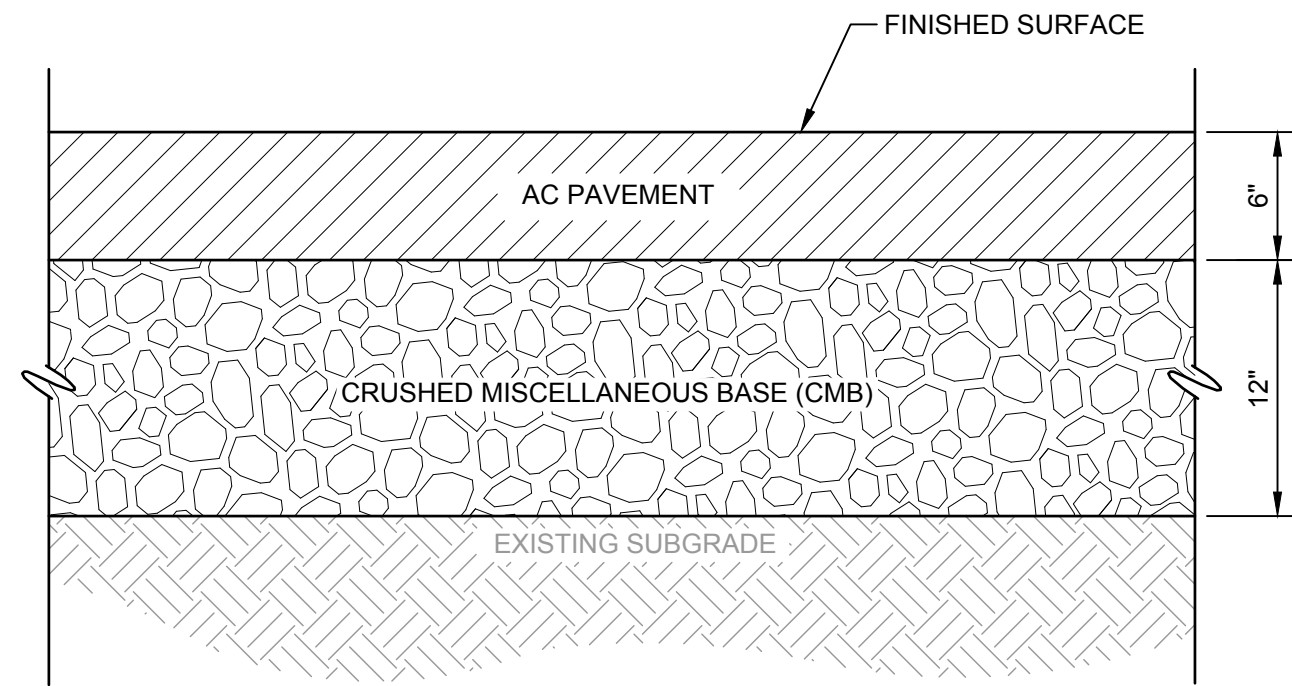
MID-VALLEY SANITARY LANDFILL
ENLARGED GRADING PLAN
NORTH SCALEHOUSE IMPROVEMENTS

DATE	DWG NO.	SCALE	SHT. NO.	TOT. SHT'S.
JUNE 2022	C-103 ENLARGED GRADING PLAN	AS SHOWN	C-103	6 OF 17

P:\San Bernardino County\Mid-Valley\Scalehouse Replacement\CAD\Sheet\Res-C-103 Enlarged Grading Plan.dwg 02/10/2023 1:17 PM

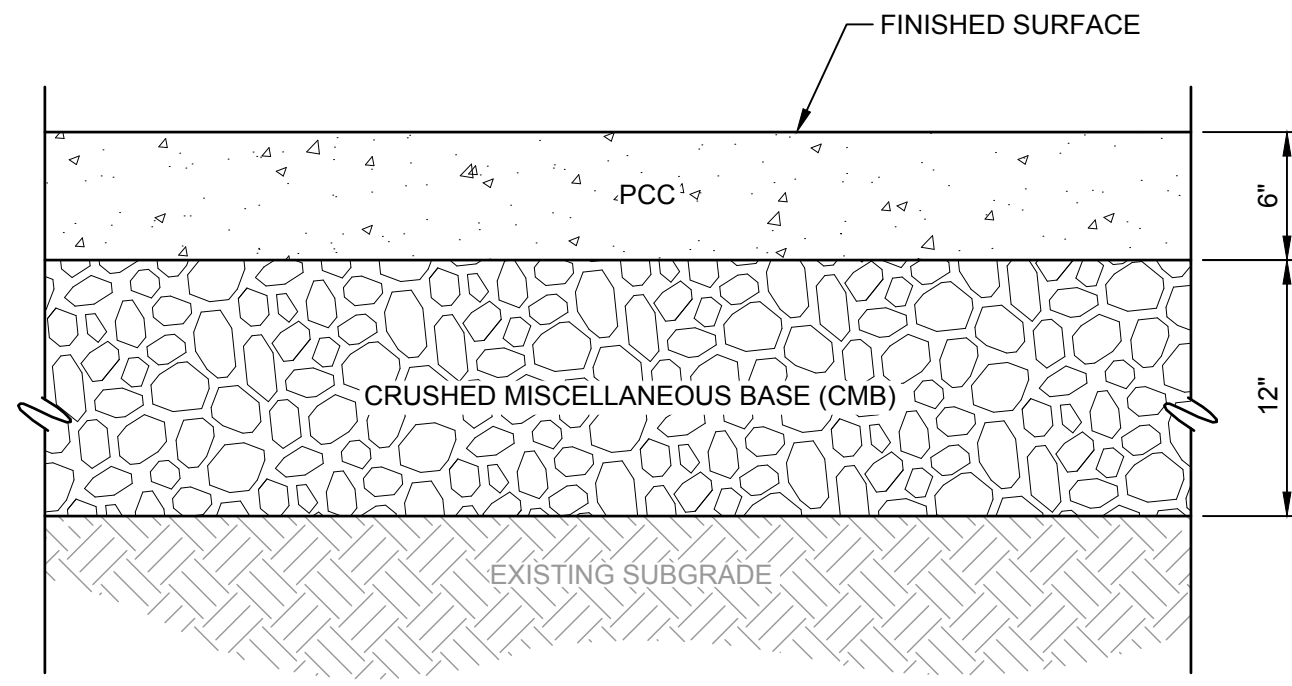
DATE OF TOPOGRAPHY: JULY 1, 2020 SUPPLEMENTED WITH AUGUST 23, 2020 AND OCTOBER 25, 2020 FIELD SURVEYS

P:\San Bernardino County\Mid-Valley\Scalehouse Replacement\CAD\Sheet\Rev\C-501 Details.dwg 6/21/2023 1:20 PM



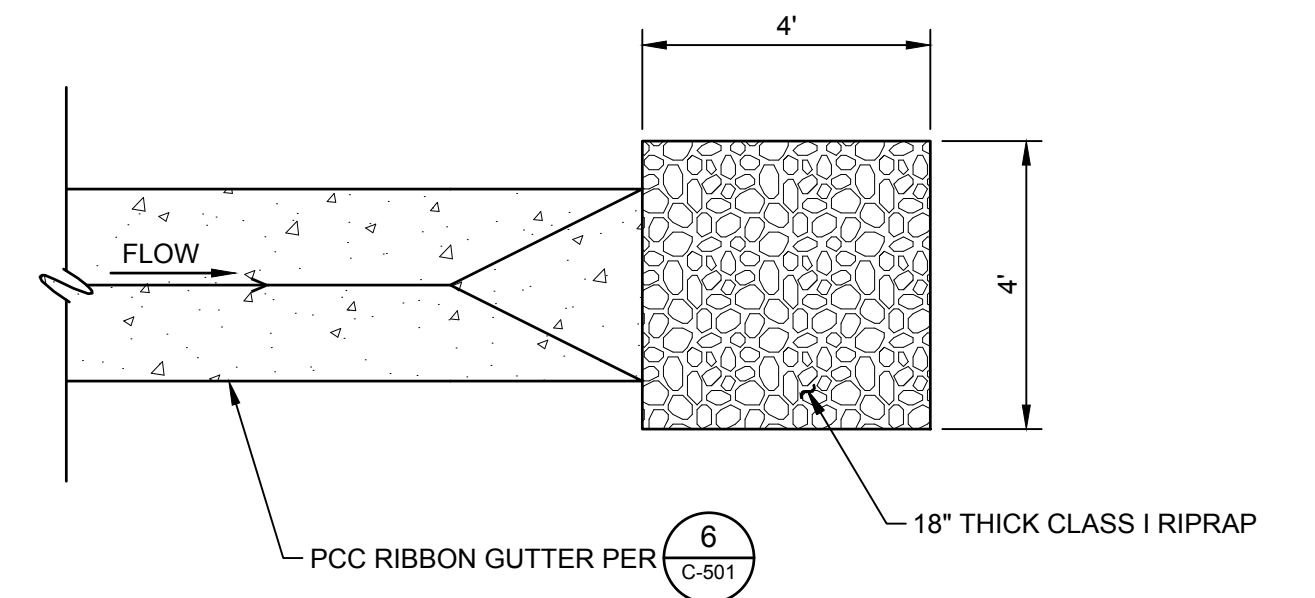
1 AC PAVEMENT

NTS REFERENCE SHEET: C-101, C-102



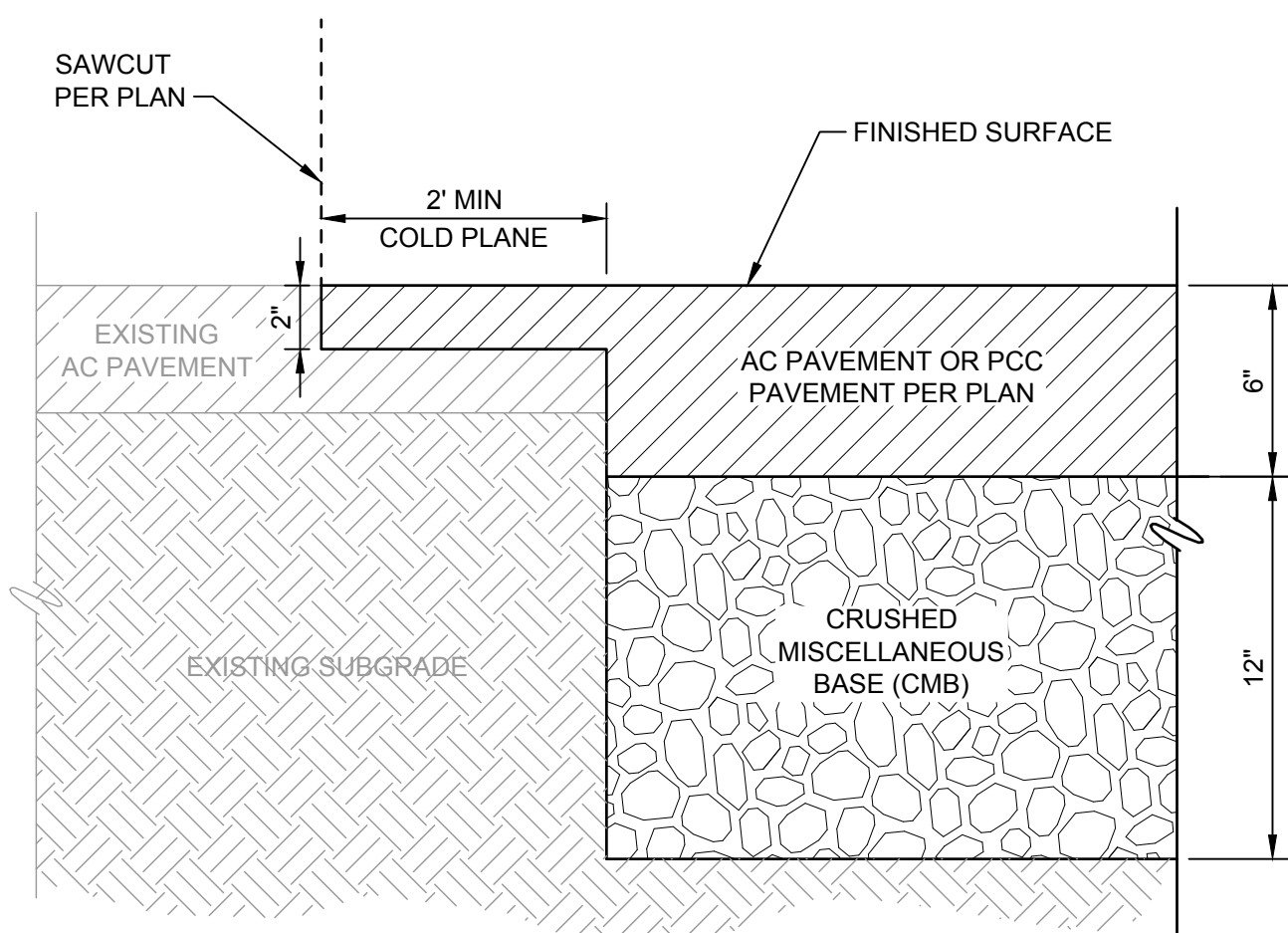
2 PCC PAVEMENT / SIDEWALK

NTS REFERENCE SHEET: C-101, C-102, C-103



3 RIPRAP PAD

NTS REFERENCE SHEET: C-102

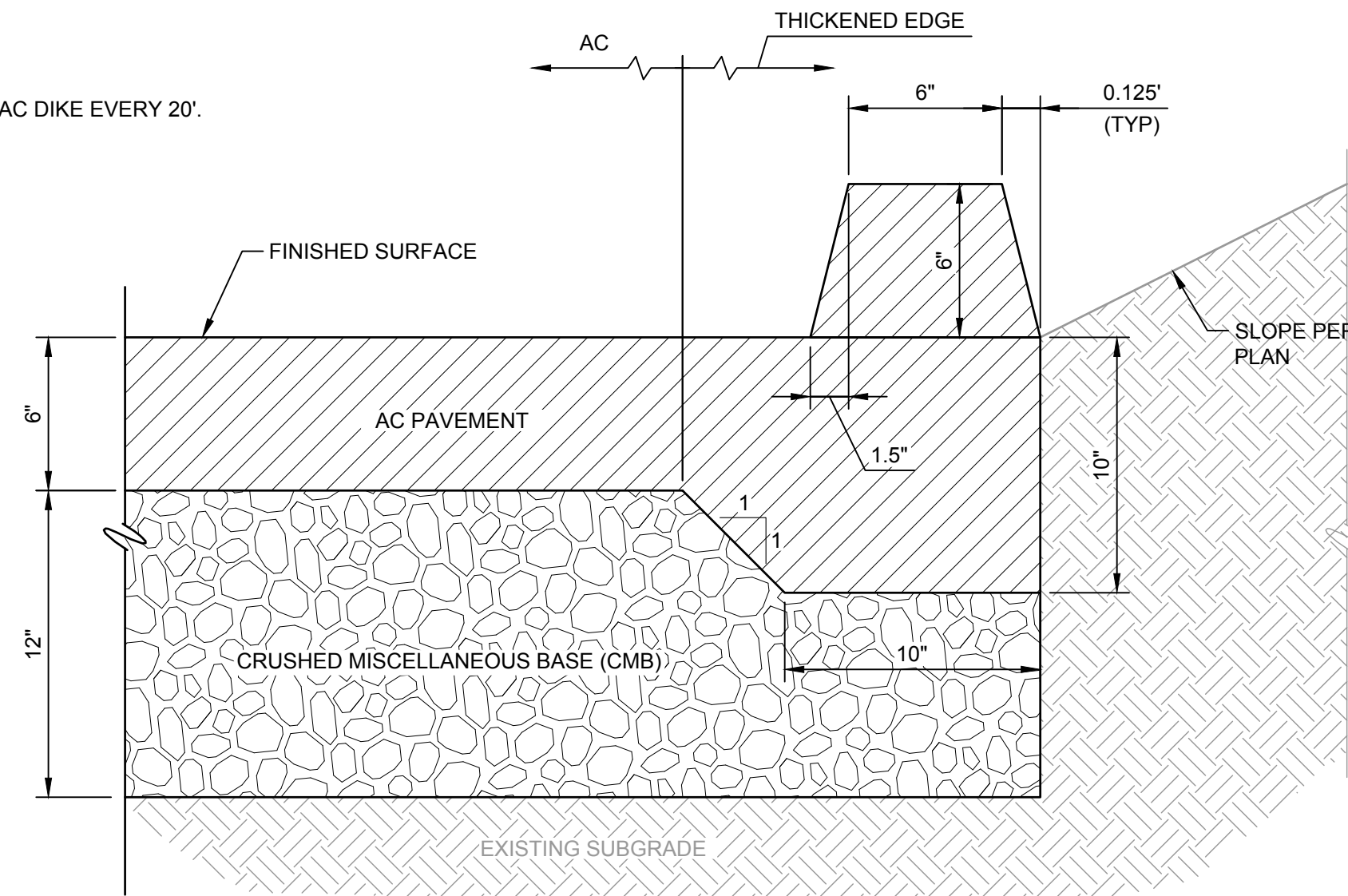


4 SAWCUT AND JOIN TO EXISTING AC PAVEMENT

NTS REFERENCE SHEET: D-101, C-101, C-102, C-103

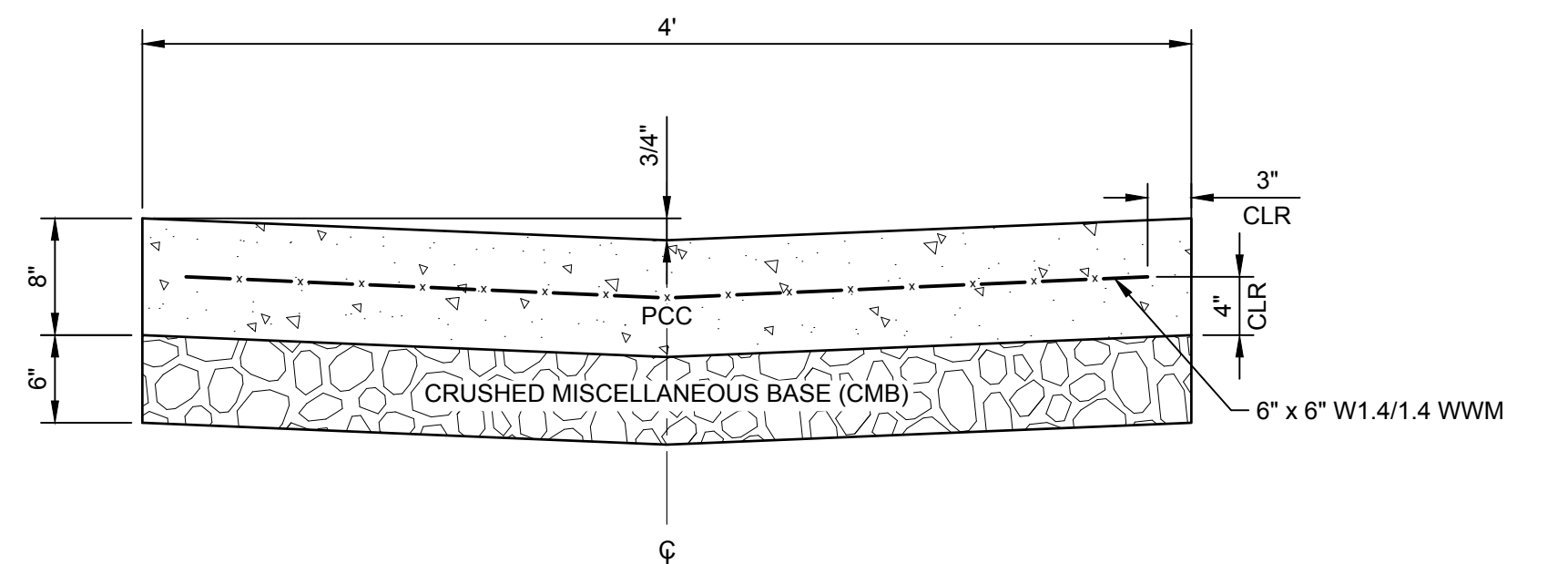
NOTE:

1. CONSTRUCT 6" OPENING IN AC DIKE EVERY 20'.



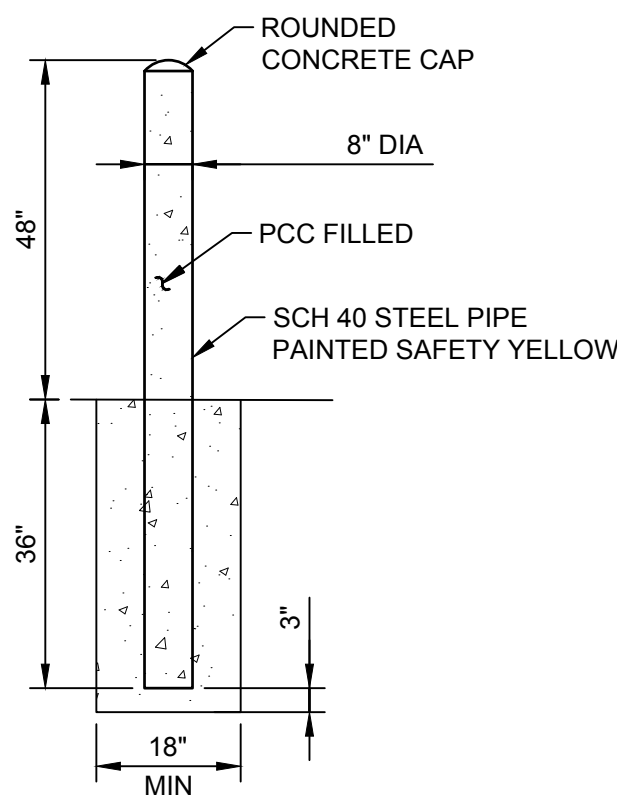
5 AC PAVEMENT THICKENED EDGE AND AC DIKE

NTS REFERENCE SHEET: C-101, C-102, C-103



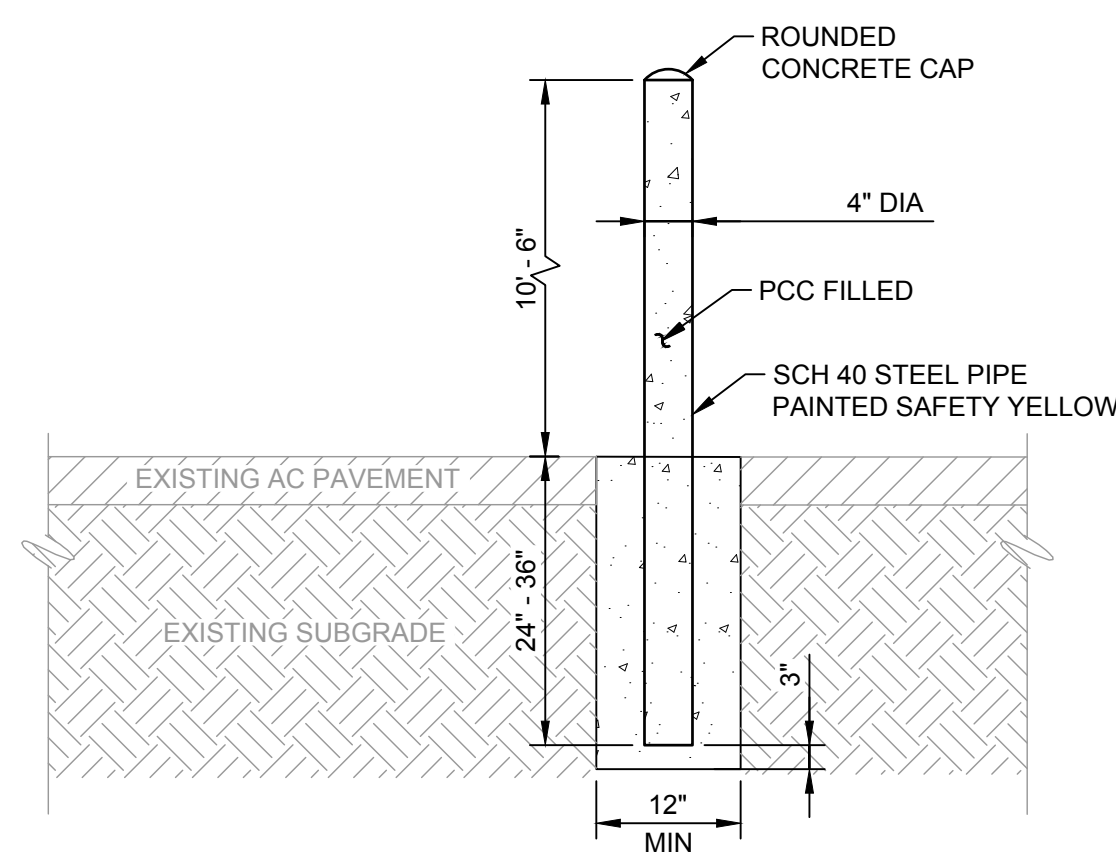
6 PCC RIBBON GUTTER

NTS REFERENCE SHEET: C-101, C-102



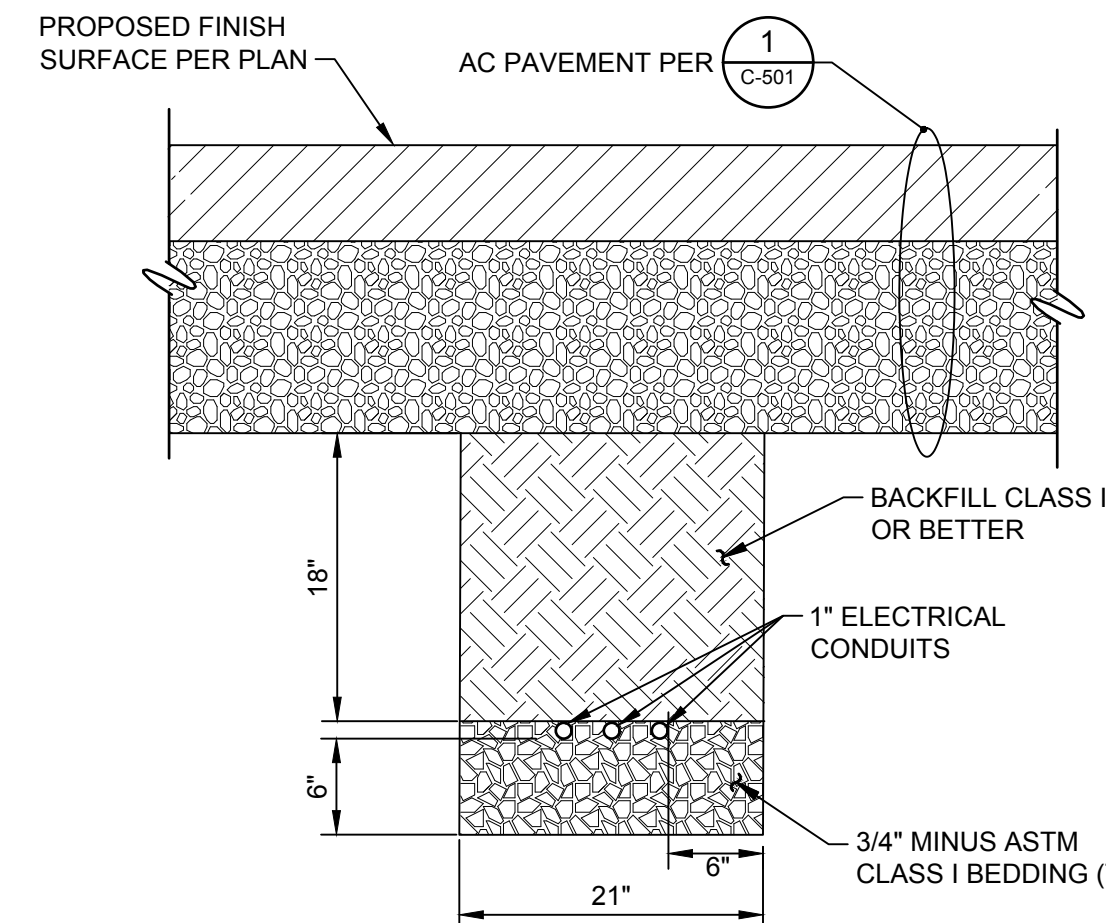
7 BOLLARD

NTS REFERENCE SHEET: C-103



8 RFID BOLLARD

NTS REFERENCE SHEET: C-103



NOTE:

ALL CONDUIT PER ELECTRICAL PLANS

9 CONDUIT TRENCH

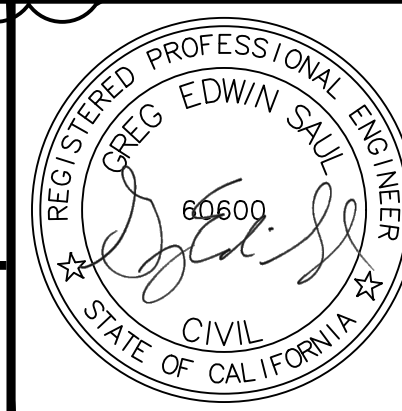
NTS REFERENCE SHEET: C-104

MARK	CHANGES	RESIDENT ENGINEER	DATE
	NO CHANGES		
FIELD CHANGES			

TETRA TECH
21700 Copley Drive, Suite 200,
Diamond Bar, CA 91765
TEL 909.860.7777 FAX 909.860.8017

PREPARED UNDER THE SUPERVISION OF:

06-13-2022
DATE



SAN BERNARDINO COUNTY DEPARTMENT OF PUBLIC WORKS			
DRAWN BY M.R.P.	DESIGNED BY D.L.L.	PROJ. ENGR G.E.S.	RECOMMENDED / APPROVED BY
SUBMITTED BY		CHIEF ENGINEER	DATE
PROJECT MANAGER		DEPUTY DIRECTOR	DATE

MID-VALLEY SANITARY LANDFILL DETAILS NORTH SCALEHOUSE IMPROVEMENTS				
DATE JUNE 2022	DWG NO. C-501 DETAILS	SCALE AS SHOWN	SHT. NO. C-501	TOT. SHTS. 11 OF 17

C:\projects\trine\22614-22002\CAD\SheetFiles\E-001 Electrical Symbols And Abbreviations.dwg 6/21/2023 3:53 PM

ELECTRICAL ABBREVIATIONS

(D)	DEMOLISH
(E)	EXISTING
(F)	FUTURE
(N)	NEW
(R)	RELOCATE
A	AMPERES, ANALOG SIGNAL
AC	ALTERNATING CURRENT
AF	AMPERS FRAME
AFF	ABOVE FINISHED FLOOR
AFG	ABOVE FINISHED GRADE
AIC	AMPERES INTERRUPTING CAPACITY
AT	AMPERES TRIP
AWG	AMERICAN WIRE GAUGE
BC	BARE COPPER
BFG	BELOW FINISHED GRADE
C	CONDUIT
CB	CIRCUIT BREAKER
CCT	CORRELATED COLOR TEMPERATURE
CO	CONDUIT ONLY
CP	CONTROL PANEL
CPT	CONTROL POWER TRANSFORMER
CRI	COLOR RENDERING INDEX
CT	CURRENT TRANSFORMER
CJ	COPPER
DC	DIRECT CURRENT
DSB	DISTRIBUTION SWITCHBOARD
EF	EXHAUST FAN
ELEV	ELEVATION
ETM	ELAPSED TIME METER
FCB	FEEDER CIRCUIT BREAKER
FIT	FLOW INDICATING TRANSMITTER
FLEX	FLEXIBLE
FLUOR	FLUORESCENT
FPP	FIBER OPTIC PATCH PANEL
FPR	FEEDER PROTECTION RELAY
FVNR	FULL VOLTAGE NON-REVERSING STARTER
G, GND	GROUND
GFCI	GROUND FAULT CIRCUIT INTERRUPTER
HH	HANDHOLE
HID	HIGH INTENSITY DISCHARGE
HMI	HUMAN MACHINE INTERFACE
HOA	HAND / OFF / AUTOMATIC
HP	HORSEPOWER
HPS	HIGH PRESSURE SODIUM
HS	HAND SWITCH
JB, JBOX	JUNCTION BOX
KAIC	KILOAMPERES INTERRUPTING CAPACITY
KVA	KILOVOLT-AMPERE
KW	KILOWATT
KWH	KILOWATT-HOUR
LED	LIGHT EMITTING DIODE
LCP	LOCAL CONTROL PANEL
LIT	LEVEL INDICATING TRANSMITTER
LOS	LOCKOUT STOP SWITCH
LSLL	LEVEL SWITCH LOW-LOW
LV	LOW VOLTAGE
MCB	MAIN CIRCUIT BREAKER
MCC	MOTOR CONTROL CENTER
MCCB	MOLDED CASE CIRCUIT BREAKER
MCP	MOTOR CIRCUIT PROTECTOR
MH	MANHOLE
MIN	MINIMUM
MLO	MAIN LUGS ONLY
MPR	MOTOR PROTECTION RELAY
MXR	MIXER
NC	NORMALLY CLOSED
NIC	NOT IN CONTRACT
NO	NORMALLY OPEN
NO.	NUMBER
NTS	NOT TO SCALE
P	POLE
PB	PUSHBUTTON, PULLBOX
PCS	PVC COATED STEEL
PE	PHOTOELECTRIC
PFR	PHASE FAILURE RELAY
PH	PHASE
PIT	PRESSURE INDICATING TRANSMITTER
PLC	PROGRAMMABLE LOGIC CONTROLLER
PQM	POWER QUALITY MONITOR
PSH	PRESSURE SWITCH HIGH
PT	POTENTIAL TRANSFORMER
REC, RECEPT	RECEPTACLE
RGS	RIGID GALVANIZED STEEL
SCCR	SHORT CIRCUIT CURRENT RATING
SPD	SURGE PROTECTION DEVICE
SSS	SOLID STATE STARTER (SOFT STARTER)
SWBD	SWITCHBOARD
TEMP	TEMPERATURE
TYP	TYPICAL
UON	UNLESS OTHERWISE NOTED
V	VOLT(S)
VA	VOLT-AMPERE
VFD	VARIABLE FREQUENCY DRIVE
W	WATT, WIRE
WP	WEATHERPROOF
XFMR	TRANSFORMER

GENERAL ELECTRICAL NOTES

- REFER TO ELECTRICAL SPECIFICATIONS FOR FURTHER DETAIL AS TO SCOPE, MATERIALS, AND EXECUTION OF ELECTRICAL WORK.
- ALL MEDIUM VOLTAGE WIRING DESIGN IS BASED ON 90 DEGREE C CONDITIONS FOR COPPER CONDUCTORS. ALL LOW VOLTAGE WIRING DESIGN IS BASED ON 75 DEGREE C CONDITIONS FOR COPPER CONDUCTORS OF TYPE THHN/THWN UNLESS OTHERWISE STATED.
- ELECTRICAL CONTRACTOR TO SIZE ALL WIRING NOT EXPLICITLY SHOWN ON DRAWINGS ACCORDING TO THE REQUIREMENTS OF NATIONAL ELECTRICAL CODE (NEC) FOR THE SPECIFIC APPLICATION AND CONDITIONS.
- ALL CONDUCTORS SHALL BE COPPER (MINIMUM SIZE #12 AWG UNLESS SPECIFICALLY NOTED OTHERWISE).
- CONTRACTOR SHALL SUBMIT SEISMIC ANCHORAGE CALCULATIONS IN CONFORMANCE WITH CODE REQUIREMENTS AND PROVIDE SEISMIC ANCHORAGE MEANS FOR EQUIPMENT IN ACCORDANCE WITH THE CALIFORNIA BUILDING CODE.
- THE ELECTRICAL CONTRACTOR SHALL CONFORM WITH ALL LOCAL CODES AND ORDINANCES, THE STATE OF CALIFORNIA ELECTRICAL SAFETY ORDERS, THE NATIONAL ELECTRICAL CODE AND ANY ADDITIONAL JURISDICTIONS RELATING TO THE WORK.
- THE ELECTRICAL CONTRACTOR SHALL FURNISH AND INSTALL ALL CONDUIT, WIRE, SERVICES, SWITCHBOARDS, AND VFD'S REQUIRED FOR A COMPLETE AND OPERATIONAL ELECTRICAL SYSTEM.
- IN THE EVENT OF A CONFLICT OR INCONSISTENCY BETWEEN ITEMS INDICATED ON THE PLANS AND/OR SPECIFICATIONS, OR WITH CODE REQUIREMENTS, THE NOTE, SPECIFICATION OR CODE WHICH PRESCRIBES AND ESTABLISHES THE MORE COMPLETE JOB OR HIGHER STANDARD SHALL PREVAIL.
- ALL ELECTRICAL EQUIPMENT EXPOSED TO THE CLIMATE SHALL BE WEATHERPROOF.
- ALL ELECTRICAL EQUIPMENT IN THIS PROJECT SHALL BE U.L. LISTED.
- ALL UNDERGROUND CONDUIT SHALL BE INSTALLED AT 30" BELOW FINISHED GRADE MINIMUM.
- THE ELECTRICAL CONTRACTOR SHALL BE RESPONSIBLE FOR LOCATING EXISTING UNDERGROUND FACILITIES AND PROTECTING THESE FACILITIES FROM DAMAGE.
- THE ELECTRICAL CONTRACTOR SHALL ROUTE CONDUITS AS REQUIRED BY FIELD CONDITIONS AND PER N.E.C.
- THE ELECTRICAL CONTRACTOR SHALL BE RESPONSIBLE FOR REPAIRING ANY DAMAGE TO EXISTING UNDERGROUND FACILITIES.
- CONTRACTOR SHALL PROVIDE ALL NEEDED CHANNELS, ANGLES, AND ANY OTHER MATERIALS REQUIRED TO SUPPORT LUMINAIRES, CONDUIT, AND ELECTRICAL EQUIPMENT IN THE LOCATIONS SHOWN ON THE DRAWINGS.
- CONTRACTOR SHALL NOT CUT ANY STRUCTURAL MEMBERS OR USE ANY ATTACHMENTS THAT WOULD IMPAIR THEIR STRENGTH.
- CONTRACTOR SHALL DESIGN SUPPORTS IN BETWEEN THE STRUCTURAL SUPPORT MEMBERS AND SUBMIT THE DESIGN AS A SHOP DRAWING SUBMITTAL.
- INSTRUMENTATION IS SHOWN IN THE GENERAL VICINITY OF THE INTENDED LOCATION AND MAY NOT NECESSARILY MATCH LOCATIONS ON THE PLANS. VERIFY ACTUAL LOCATIONS OF INSTRUMENTS AND RUN ASSOCIATED CONDUITS AS REQUIRED.
- ELECTRICAL EQUIPMENT AND MATERIAL TO BE LISTED, LABELED, AND INSTALLED PER THE CALIFORNIA ELECTRICAL CODE, THE INSTALLATION STANDARDS/MANUFACTURER'S RECOMMENDATIONS AND, IF REQUIRED, A RECOGNIZED ELECTRICAL TESTING LABORATORY.
- ALL EXPOSED CONDUITS TO BE GALVANIZED RIGID STEEL FOR DRY LOCATIONS AND PVC COATED GALVANIZED RIGID STEEL IN WET LOCATIONS UNLESS OTHERWISE STATED ON THE PLANS.

ELECTRICAL SYMBOLS - PLANS	
SYMBOL	SYMBOL DESCRIPTION
	DUPLEX RECEPTACLE (WP, GFCI AS INDICATED)
	JUNCTION BOX
	SWITCH (3 = 3-WAY SWITCH, 4 = 4-WAY SWITCH, ETC.)
	FLUORESCENT LUMINAIRE CONTROLLED BY SWITCH a
	WALL MOUNTED LUMINAIRE
	LUMINAIRE REFERENCE SEE LUMINAIRE SCHEDULE FOR DETAILS
	UNDERGROUND CONDUIT
	EXPOSED CONDUIT
	HOMERUN TO PANEL "A", CIRCUIT 3
	CONDUIT BENDS TOWARD OBSERVER
	PANELBOARD
	DATA OUTLET
	THERMOSTAT
	METER, ELECTRIC UTILITY GRADE UON

ELECTRICAL SYMBOLS - SINGLE LINE DIAGRAM	
DEVICE	SYMBOL DESCRIPTION
	DRY TYPE TRANSFORMER
	GROUNDING ELECTRODE
	LOW VOLTAGE CIRCUIT BREAKER MCCB UON
	METER, ELECTRIC UTILITY GRADE UON

FOR BIDDING PURPOSES

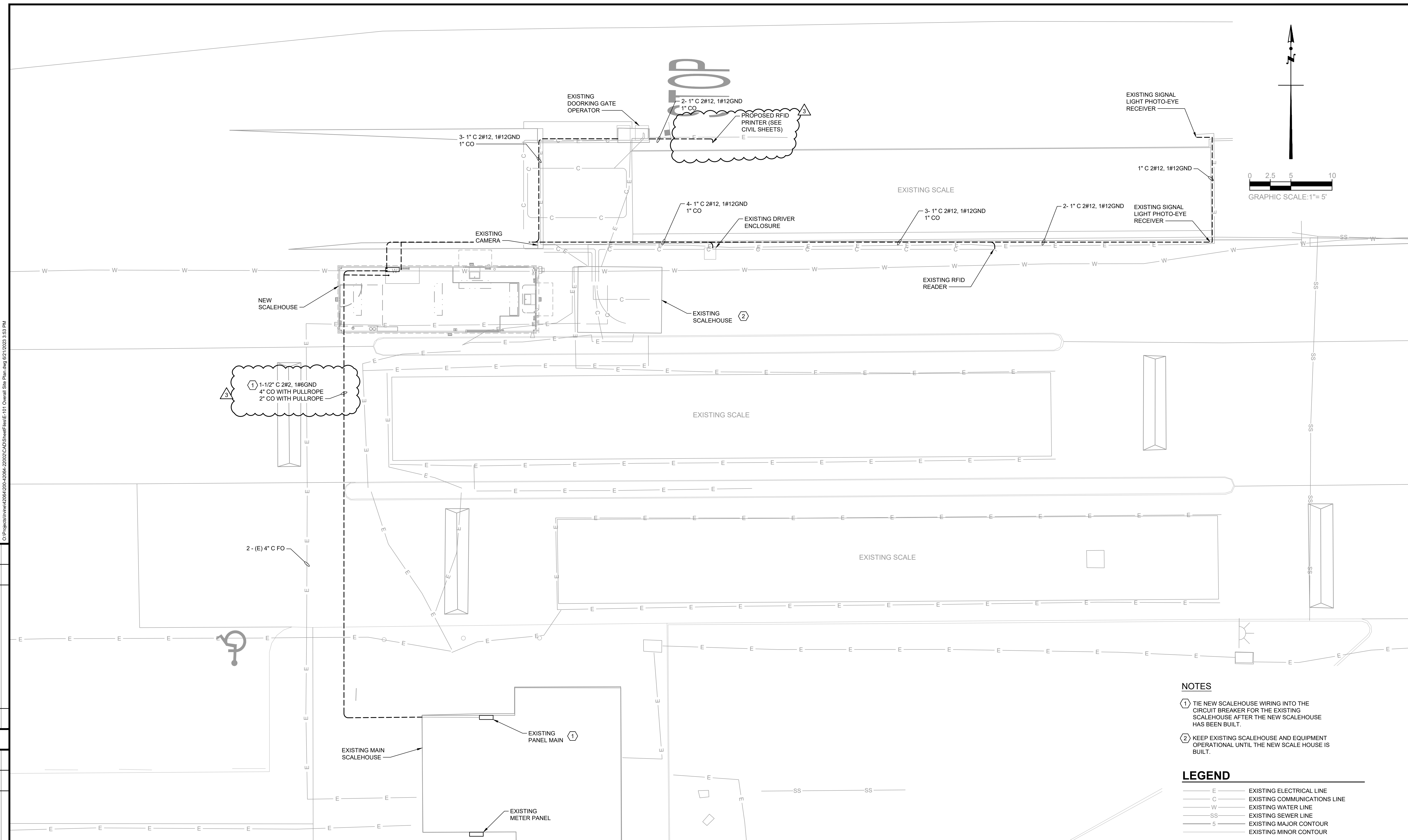
MARK	REVISIONS	DATE	APPR.

MARK	REVISIONS	DATE	APPR.

<div>MARK</div> <div>CHANGES</div> <div>NO CHANGES</div>	<div>RESIDENT ENGINEER</div> <div>DATE</div>	<div> TETRA TECH 21700 Copley Drive, Suite 200, Diamond Bar, CA 91765 TEL 909.860.7777 FAX 909.860.8017</div>	<div>PREPARED UNDER THE SUPERVISION OF:</div> <div></div> <div>MAZEN KASSAR, PE</div> <div>6/21/2023</div> <div>DATE</div>	<div></div> <div>6/21/2023</div>	<div>SAN BERNARDINO COUNTY</div> <div>DEPARTMENT OF PUBLIC WORKS</div>		<div>MID-VALLEY SANITARY LANDFILL</div> <div>ELECTRICAL SYMBOLS AND ABBREVIATIONS</div> <div>NORTH SCALEHOUSE IMPROVEMENTS</div>			
		<div>DRAWN BY</div> <div>J.R.</div>			<div>DESIGNED BY</div> <div>J.R.</div>	<div>PROJ. ENGR.</div> <div>M.K.</div>	<div>RECOMMENDED / APPROVED BY</div>			
		<div>SUBMITTED BY</div>			<div>CHIEF ENGINEER</div> <div>DATE</div>					
		<div>PROJECT MANAGER</div> <div>DATE</div>			<div>DEPUTY DIRECTOR</div> <div>DATE</div>					
<div>FIELD CHANGES</div>						<div>DATE</div> <div>JUNE 2023</div>	<div>DWG NO.</div> <div>E-001 ELECTRICAL SYMBOLS AND ABBREVIATIONS</div>	<div>SCALE</div> <div>AS SHOWN</div>	<div>SHT. NO.</div> <div>E-001</div>	<div>TOT. SHT'S.</div> <div>14 OF 17</div>

FOR BIDDING PURPOSES

C:\projects\hvn\hvn\2010-12064-22002\CAD\Sheet\PlanE-101 Overall Site Plan.dwg 6/21/2023 3:53 PM



NOTES

- ① TIE NEW SCALEHOUSE WIRING INTO THE CIRCUIT BREAKER FOR THE EXISTING SCALEHOUSE AFTER THE NEW SCALEHOUSE HAS BEEN BUILT.
- ② KEEP EXISTING SCALEHOUSE AND EQUIPMENT OPERATIONAL UNTIL THE NEW SCALE HOUSE IS BUILT.


LEGEND

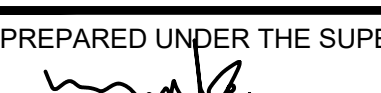
- E — EXISTING ELECTRICAL LINE
- C — EXISTING COMMUNICATIONS LINE
- W — EXISTING WATER LINE
- SS — EXISTING SEWER LINE
- 5 — EXISTING MAJOR CONTOUR
- — EXISTING MINOR CONTOUR

MID-VALLEY SANITARY LANDFILL					
ELECTRICAL OVERALL SITE PLAN					
NORTH SCALEHOUSE IMPROVEMENTS					
DATE	DWG NO.	SCALE	SHT. NO.	TOT. SHT'S.	
JUNE 2023	E-101 OVERALL SITE PLAN	AS SHOWN	E-101	15 OF 17	

SAN BERNARDINO COUNTY DEPARTMENT OF PUBLIC WORKS			
DRAWN BY J.R.	DESIGNED BY J.R.	PROJ. ENGR. M.K.	RECOMMENDED / APPROVED BY
SUBMITTED BY			CHIEF ENGINEER
PROJECT MANAGER			DEPUTY DIRECTOR



**TETRA TECH**
21700 Copley Drive, Suite 200,
Diamond Bar, CA 91765
TEL 909.860.7777 FAX 909.860.8017

PREPARED UNDER THE SUPERVISION OF:

MAZEN KASSAR, PE

6/21/2023
DATE

MARK	CHANGES	RESIDENT ENGINEER	DATE
3	NO CHANGES		
FIELD CHANGES			

DATE OF TOPOGRAPHY: JULY 1, 2020 SUPPLEMENTED WITH AUGUST 23, 2020 FIELD SURVEY

ATTACHMENT NO. 2

**MID-VALLEY SANITARY LANDFILL
NORTH SCALEHOUSE IMPROVEMENTS**

REVISED BID SCHEDULE – JUNE 23, 2023

**MID-VALLEY SANITARY LANDFILL
NORTH SCALEHOUSE IMPROVEMENTS
BID SCHEDULE - REVISED 06/23/23**

ITEM NO.	DESCRIPTION OF WORK	ESTIMATED QUANTITY	UNIT	UNIT PRICE	ESTIMATED TOTAL COST
1	Mobilization/Demobilization	1	LS		
2	Construction Support Tasks	1	LS		
3	Survey	1	LS		
4	Record Drawings	1	LS		
5	Clearing, Grubbing, and Demolition	1	LS		
6	Removals and Relocations	1	LS		
7	Relocate Existing LFG Piping (deletable item)	1	LS		
8	Remove Interfering Portion of Existing Downdrain (deleteable item)	1	LS		
9	Refuse Removal and Reconsolidation (deleteable item)	2,000	CY		
10	Excavation	400	CY		
11	Sawcut and Join to Existing AC Pavement per 4/C-501	1,420	LF		
12	AC Pavement per 1/C-501	26,000	SF		
13	PCC Pavement / Sidewalk per 2/C-501	1,465	SF		
14	PCC Ribbon Gutter per 6/C-501	1,010	LF		
15	18" Thick Class 1 Riprap Pad per 3/C-501	16	SF		
16	AC Pavement Thickened Edge per 5/C-501	465	LF		
17	ADA Access Striping	1	LS		
18	Prefabricated Scalehouse per Sheet C-201	1	LS		
19	Scalehouse Foundation per 2/S-100	1	LS		
20	Building Protection System per 1/C-502	1	LS		
21	Bollard per 7/C-501	3	EA		
22	Concrete Curb A1-6 per SSPWC STD Plan 120-3	25	LF		
23	AC Dike per 5/C-501	585	LF		
23A	Proposed RFID Bollard	1	LS		

**MID-VALLEY SANITARY LANDFILL
NORTH SCALEHOUSE IMPROVEMENTS
BID SCHEDULE - REVISED 06/23/23**

ITEM NO.	DESCRIPTION OF WORK	ESTIMATED QUANTITY	UNIT	UNIT PRICE	ESTIMATED TOTAL COST
24	Trenching per Sheet Sheets E-101	230	LF		
25	Conduit and Wiring per Sheets E-101 and E-201	1	LS		
26	Panelboard - 240/120V, 200A, 1Ø, 3W	1	EA		
27	Panelboard - 240/120V, 100A, 1Ø, 3W	1	EA		
28	Grounding System	1	LS		
29	Lighting, Switches, and Receptacles	1	LS		
TOTAL					

1. SWMD reserves the right to delete any specific item on the bid schedule in its entirety. Should SWMD elect not to proceed with a specified item of work, it will be deleted from the contract. The Contractor shall have no claim for compensation, or loss of profit, as a result of the deletion or reduction in quantities.

2. The Bid Schedule shown above does not constitute agreed-upon costs for the items described. The purpose of this cost breakdown is to provide SWMD with cost allocations for comparison and budgeting purposes only. Final cost allocations for each individual item for the project's schedule of values and progress payments will be established by the Construction Manager in negotiation with the Contractor.

3. THE AWARD OF THIS CONTRACT WILL BE BASED ON THE LOWEST RESPONSIBLE BID TOTAL

ATTACHMENT NO. 3

**MID-VALLEY SANITARY LANDFILL
NORTH SCALEHOUSE IMPROVEMENTS**

PRE-BID SIGN-IN SHEETS



Department of Public Works

- Environmental & Construction • Flood Control
- Operations • Solid Waste Management
- Surveyor • Transportation



MANDATORY PRE-BID MEETING Sign-In Sheet

Project: Mid Valley Sanitary Landfill North Scalehouse Improvements

Meeting Date/Time: April 13, 2023 / 10:00 AM

Meeting Location: 222 W. Hospitality Lane, San Bernardino, CA

1. Name: HOMAN DIAN

Phone Number: 213-300-6051

Company Name: AMAZING ELECTRIC INC.

Address: 2484 OLIVE AVE ALTADENA CA.

Email: homan@amazingelectricinc.com
2. Name: Jacob Olvera

Phone Number: (909) 322-4591

Company Name: H & H General Contractors

Address: 7999 Palm Ave.

Email: rick@hlgcinc.com
3. Name: Gina Brewer

Phone Number: (909) 337-4301

Company Name: Trinity Construction

Address: PO Box 31007, Blue Jay, CA 92317

Email: gina@trinityconstruction.us
4. Name: Johnny Lee

Phone Number: 714-709-3212

Company Name: Angeles Contractor, Inc.

Address: 783 Phillips Dr. City of Industry

Email: johnny1@angelescontractor.com
5. Name: _____

Phone Number: _____

Company Name: _____

Address: _____

Email: _____



Department of Public Works

- Environmental & Construction • Flood Control
- Operations • Solid Waste Management
- Surveyor • Transportation



MANDATORY PRE-BID MEETING Sign-In Sheet

Project: Mid Valley Sanitary Landfill North Scalehouse Improvements

Meeting Date/Time: April 13, 2023 / 10:00 AM

Meeting Location: 2390 N Alder Avenue, Rialto, CA

1. Name: Jacob Oliver

Phone Number: (909) 322-4541

Company Name: H & H General Contractors

Address: 7919 palm Ave

Email: JTOliver@gmail.com
2. Name: gina Brewer

Phone Number: (909) 337-4301

Company Name: Trinity Const.

Address: PO BOX 246, BLUE JAY, CA. 92317

Email: gina@trinityconstruction.us
3. Name: Homan Dian

Phone Number: 213-300-6051

Company Name: AMAZING ELECTRIC INC.

Address: 2484 OLIVE AVE Alhambra CA 91801

Email: homan@amazingelectricinc.com
4. Name: Johnny Lee

Phone Number: 714-709-3212

Company Name: ACI

Address: 783 phillips Dr. City of Industry, CA 91748

Email: johnny1@angelescontractor.com
5. Name: _____

Phone Number: _____

Company Name: _____

Address: _____

Email: _____