

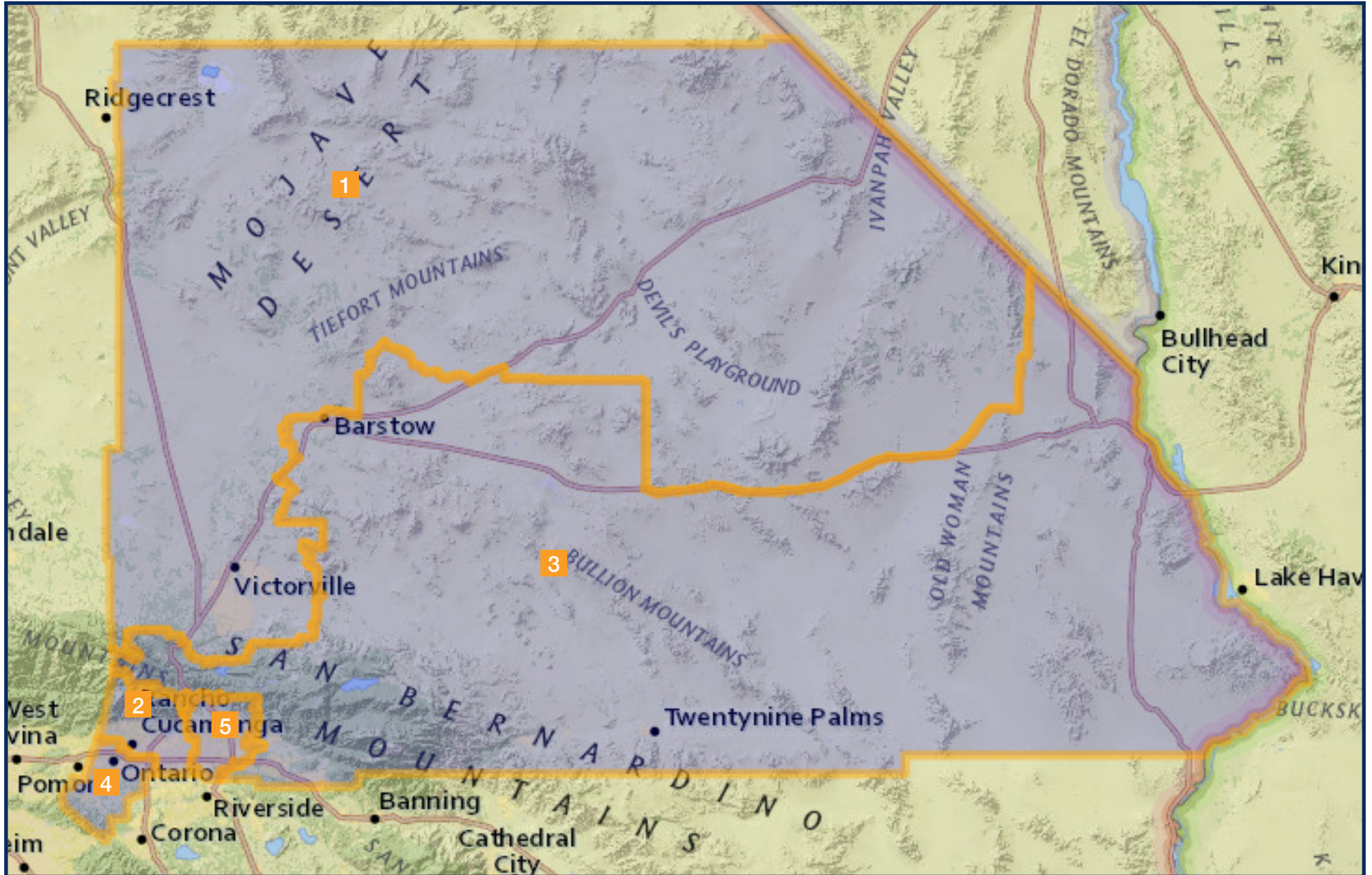
# REDISTRICTING SAN BERNARDINO

## COMMISSION MAP 2 - VERSION 2

	District 1	District 2	District 3	District 4	District 5
2020 Census Count*	430,041	441,285	431,037	440,910	436,879
Deviation #	-5,989	5,255	-4,993	4,880	849
Deviation %	-1.4%	1.2%	-1.2%	1.1%	0.2%
2010 Census Count	391,385	418,604	406,395	411,309	407,480
2019 CVAP*	256,510	283,980	297,346	278,862	244,314
2010 CVAP	224,150	234,154	271,893	237,730	207,966
% Unincorporated	19.6%	6.2%	23.3%	2.9%	17.6%

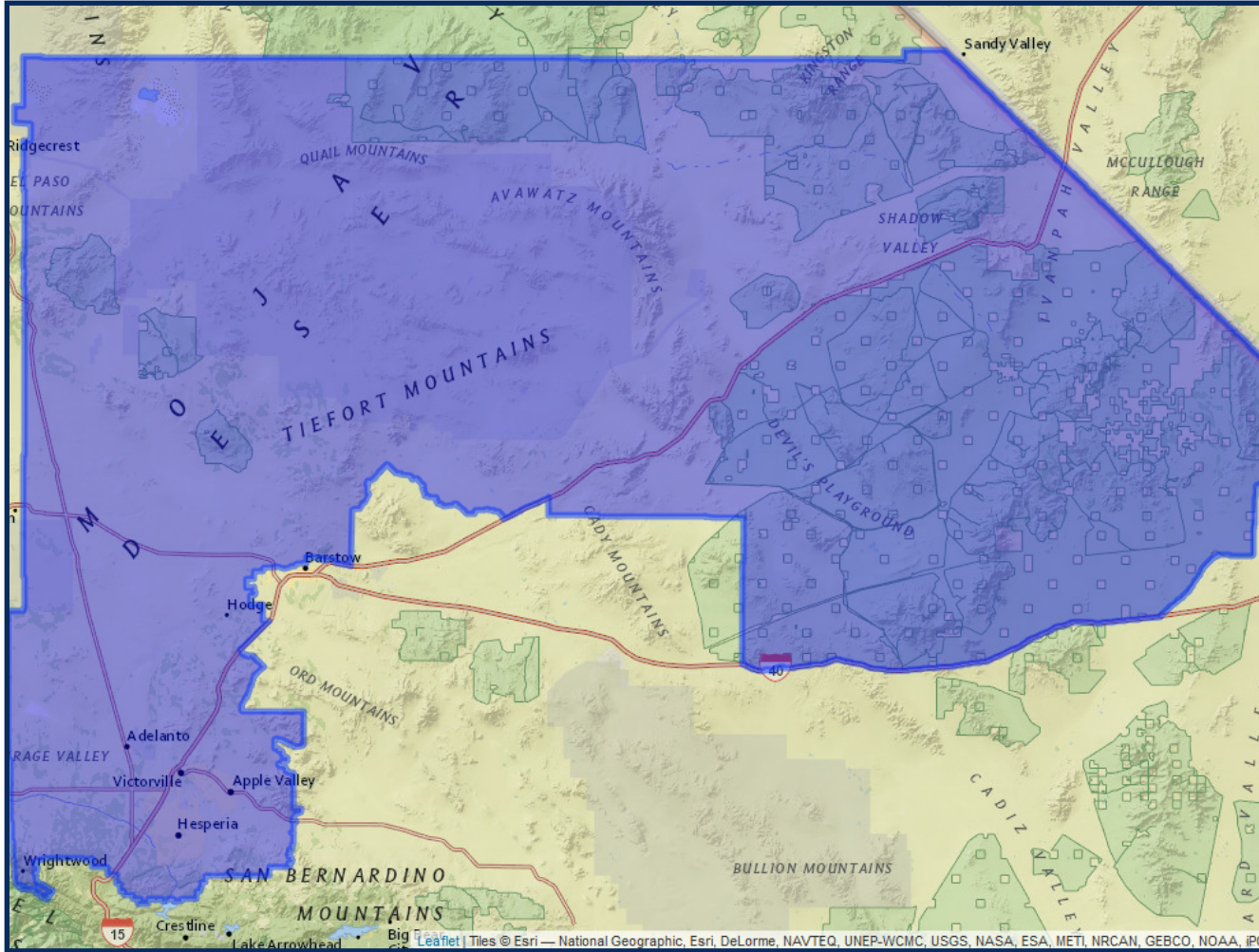
\*Adjusted for prisoner reallocation

# REDISTRICTING SAN BERNARDINO COMMISSION MAP 2 - VERSION 2



# REDISTRICTING SAN BERNARDINO COMMISSION MAP 2 - VERSION 2

## District 1

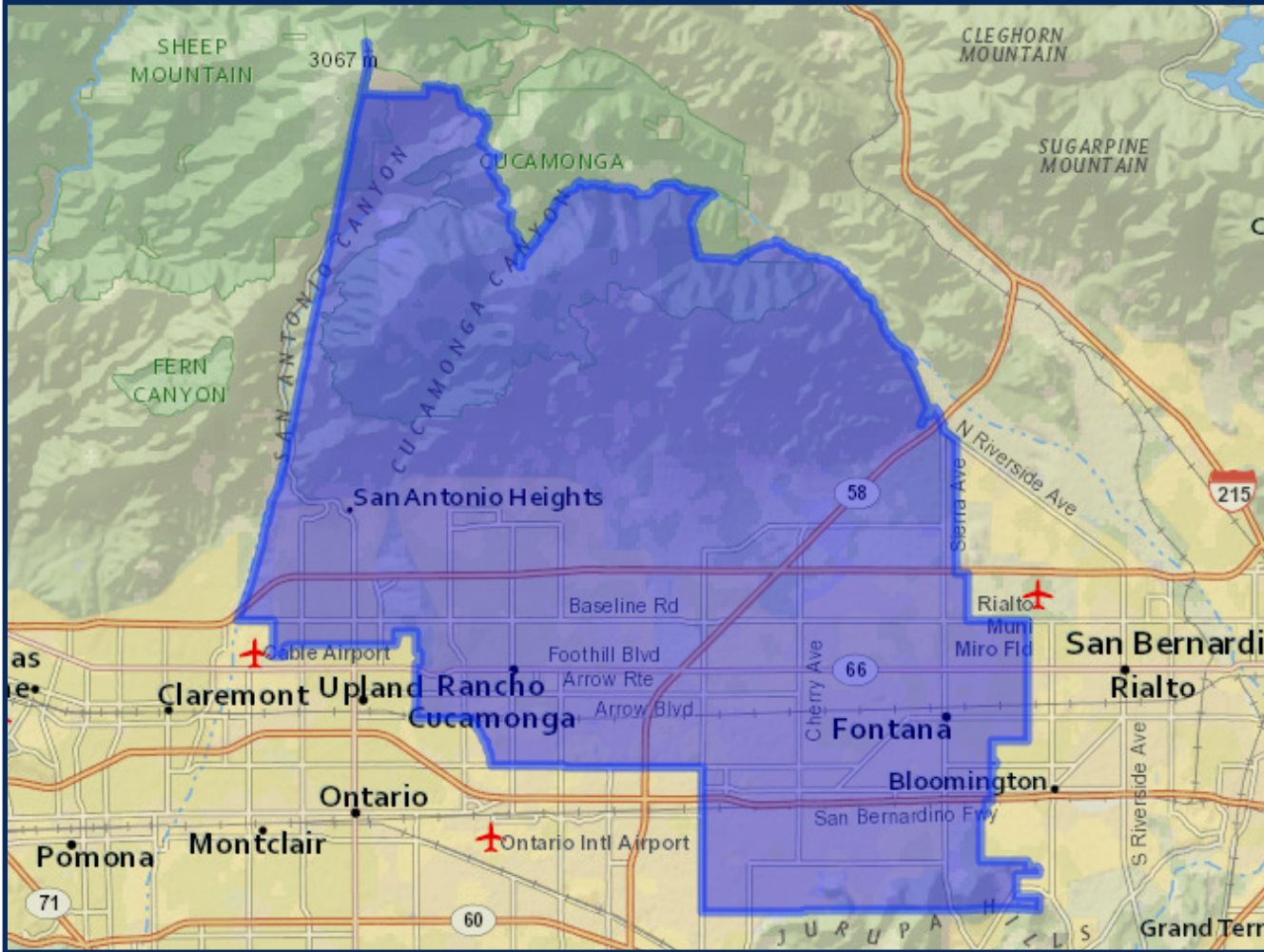


	2020 Count*	2019 CVAP*
Total	430,041	256,510
White	135,174 31.43%	114,247 44.54%
Black	44,268 10.29%	26,547 10.35%
Asian	14,006 3.26%	6,823 2.66%
Hispanic	213,977 49.76%	101,801 39.69%

\*Adjusted for prisoner reallocation

# REDISTRICTING SAN BERNARDINO COMMISSION MAP 2 - VERSION 2

## District 2

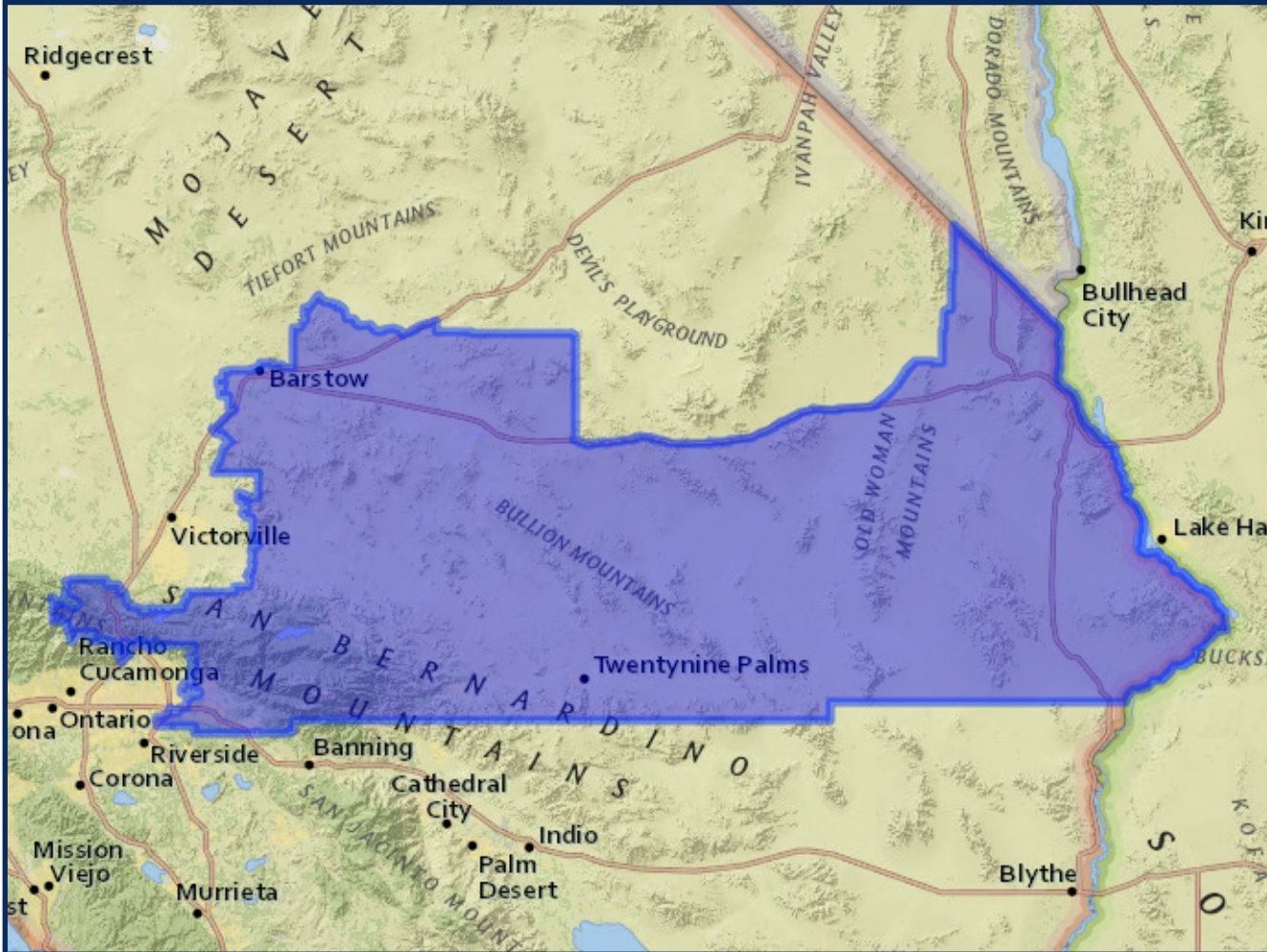


	2020 Count*	2019 CVAP*
Total	441,285	283,980
White	104,656 23.72%	89,010 31.34%
Black	34,950 7.92%	27,720 9.76%
Asian	46,941 10.64%	22,521 7.93%
Hispanic	237,266 53.77%	136,937 48.22%

\*Adjusted for prisoner reallocation

# REDISTRICTING SAN BERNARDINO COMMISSION MAP 2 - VERSION 2

## District 3

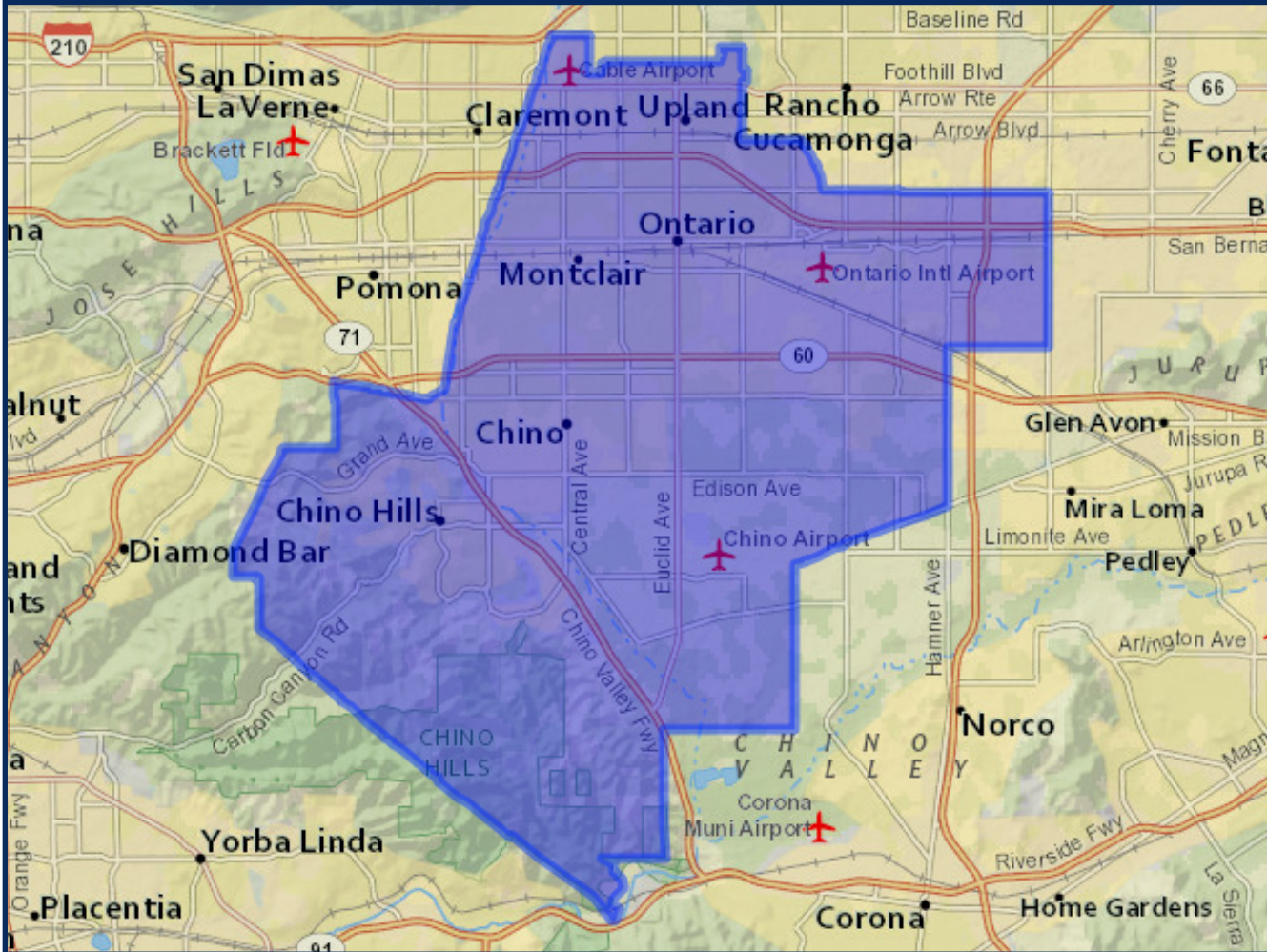


	2020 Count*	2019 CVAP*
Total	431,037	297,346
White	198,054 45.95%	166,684 56.06%
Black	26,517 6.15%	19,073 6.41%
Asian	28,131 6.53%	15,446 5.19%
Hispanic	151,445 35.14%	85,091 28.62%

\*Adjusted for prisoner reallocation

# REDISTRICTING SAN BERNARDINO COMMISSION MAP 2 - VERSION 2

## District 4

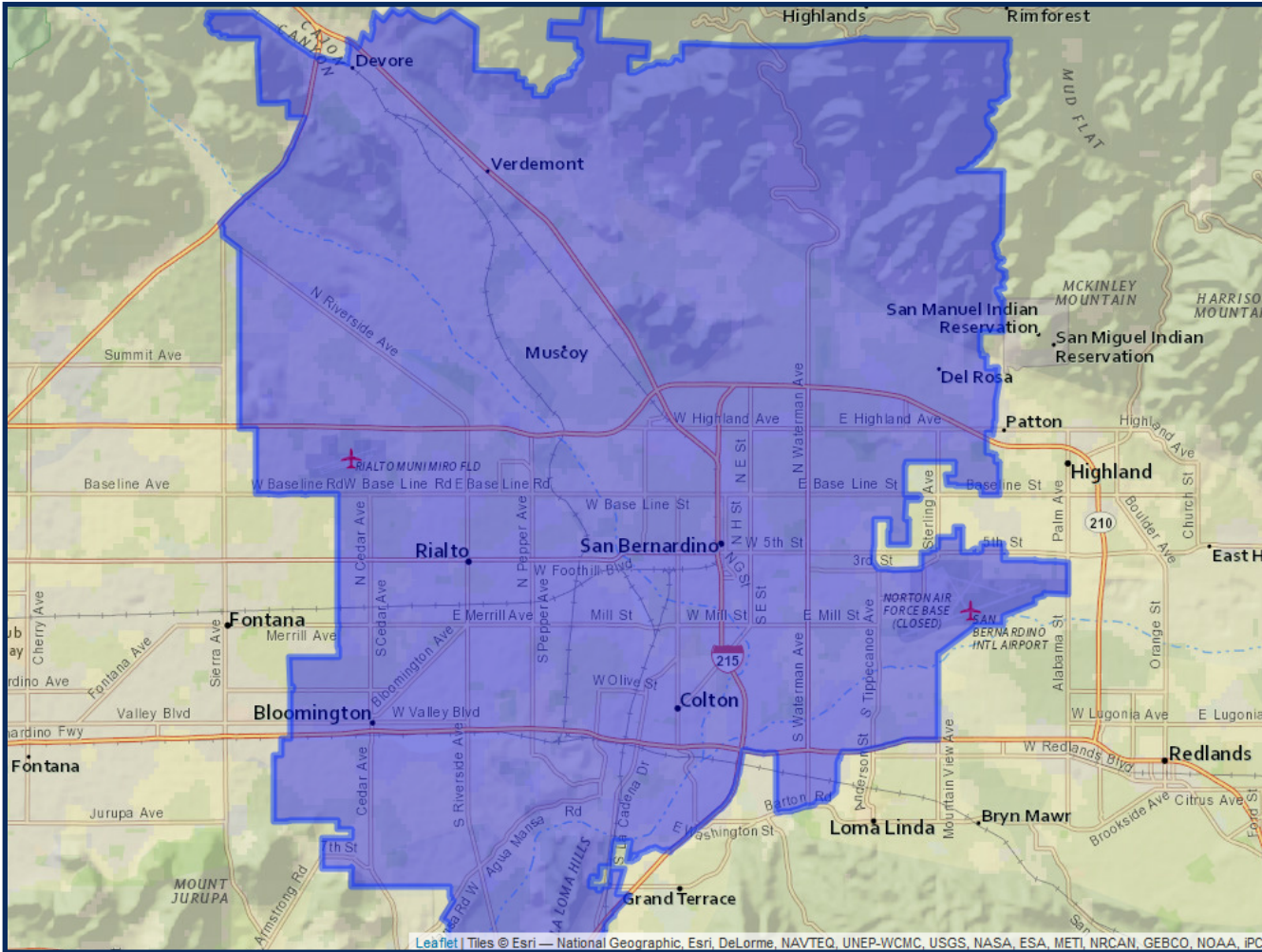


	2020 Count*		2019 CVAP*	
Total	440,910		278,862	
White	78,675	17.84%	77,354	27.74%
Black	23,143	5.25%	15,674	5.62%
Asian	73,401	16.65%	35,967	12.90%
Hispanic	250,745	56.87%	140,639	50.43%

\*Adjusted for prisoner reallocation

# REDISTRICTING SAN BERNARDINO COMMISSION MAP 2 - VERSION 2

## District 5



	2020 Count*		2019 CVAP*	
Total	<b>436,879</b>		<b>244,314</b>	
White	48,607	11.13%	45,564	18.65%
Black	44,660	10.22%	35,419	14.50%
Asian	13,597	3.11%	7,996	3.27%
Hispanic	317,007	72.56%	149,571	61.22%

\*Adjusted for prisoner reallocation