

WARNING: ALL INDIVIDUALS INTERESTED IN BIDDING ON THIS PROJECT MUST OBTAIN THE FINAL PLANS AND SPECIFICATIONS FROM THE DEPARTMENT MANAGING THE PROJECT OR AS OTHERWISE STATED IN THE ADVERTISEMENT FOR BIDS FOR THE PROJECT. DO NOT USE THE PLANS AND SPECIFICATIONS POSTED ON THE CLERK OF THE BOARD'S WEBSITE FOR BIDDING ON THIS PROJECT.



SAN BERNARDINO COUNTY DEPARTMENT OF PUBLIC WORKS

TRANSPORTATION PLANS FOR CONSTRUCTION ON BALDWIN LANE SIDEWALK LIMITS

FROM 400' WEST OF MAPLE LANE TO CREEKSIDE LANE (NORTH SIDE ONLY)

WORK ORDER NO. H15029 ROAD NO. 151100-010

LENGTH 0.55 MILES



LOCATION MAP
NOT TO SCALE

SAN BERNARDINO COUNTY

APPROVED BY: Brendon P. Biggs
BRENDON P. BIGGS, M.S., P.E., DIRECTOR OF PUBLIC WORKS R.C.E. 57127

3/16/22
DATE

APPROVED BY: Noel Castillo
NOEL CASTILLO, P.E., ASSISTANT DIRECTOR OF PUBLIC WORKS R.C.E. 78044

3/16/22
DATE

MARK	CHANGES	RESIDENT ENGINEER	DATE
	NO CHANGES		
FIELD CHANGES		SHT. NO.	TOT. SH'TS.
		1	13

MARK	REVISIONS	DATE

MARK	REVISIONS	DATE

INDEX OF SHEETS

1	TITLE SHEET
2	PROJECT NOTES, INDEX MAP, AND LEGENDS
3	TYPICAL SECTIONS
4-9	PLAN AND PROFILE SHEETS
10-11	CURB RETURN DETAILS
12-13	TRAFFIC SIGNING AND STRIPING SHEETS
1-3	X-SECTIONS

THE FOLLOWING SPECIAL DRAWINGS AND COUNTY STANDARDS ARE ATTACHED TO THE SPECIAL PROVISIONS:

109	116	117	130	131
135B	303	303A	303B	

STANDARD PLANS FOR PUBLIC WORKS CONSTRUCTION
606-4 (3 SHEETS)

TO BE SUPPLEMENTED BY THE FOLLOWING
CALTRANS STANDARD PLANS 2015.

RSP T9 RSP T10 T13

TO BE SUPPLEMENTED BY THE FOLLOWING
CALTRANS STANDARD PLANS DATED OCTOBER, 2018.

A20A	A20B	A20D	A24C	A24D	A24E	A87A
A87B	A88A	A88B	P10			

TO BE SUPPLEMENTED BY THE FOLLOWING
CA MUTCD 2014 REVISION 4.

FIG 2A-2(CA) FIG 2C-13(CA)
FIG 6H-28 FIG 6H-29 SEC. 6D.01
SEC. 6D.02

THIS PROJECT REQUIRES A CONTRACTOR'S LICENSE
CLASS "A" OR CLASS "C12"

GENERAL NOTES

U. THE FACT THAT ANY UTILITY FACILITY IS SHOWN OR NOT SHOWN UPON THE PLANS SHALL NOT RELIEVE THE CONTRACTOR OF THE RESPONSIBILITY UNDER SECTION 5-1.36D "NON-HIGHWAY FACILITIES," OF THE CALTRANS STANDARD SPECIFICATIONS. IT SHALL BE THE CONTRACTOR'S RESPONSIBILITY, PURSUANT THERETO, TO ASCERTAIN THE LOCATION OF ANY UTILITY FACILITY WHICH MAY BE SUBJECT TO DAMAGE BY REASON OF THE CONTRACTOR'S OPERATIONS.

- ALL STATIONING NOTES ON PLAN REFER TO THE CL SUR BALDWIN LANE.
- DIMENSIONS ARE SUBJECT TO TOLERANCES SPECIFIED IN THE CALTRANS STANDARD SPECIFICATIONS.
- ALL PAVEMENT WIDTH DIMENSIONS SHOWN ON THE PLANS ARE TO THE EDGE OF PAVEMENT OR TO THE TOP OF CURB, UNLESS OTHERWISE NOTED.
- TRANSITIONS AND WARPING SHALL BE AS SHOWN AND AS DETERMINED BY THE ENGINEER.
- ASPHALT CONCRETE OVERLAYS SHALL BE FEATHERED TO MEET EXISTING AS SHOWN ON THE PLANS OR AS DETERMINED BY THE ENGINEER.
- ALL TREES & VEGETATION OUTSIDE THE LIMITS OF EXCAVATION AND EMBANKMENT SLOPE LINES, SHALL BE PROTECTED IN PLACE.

BASIS OF BEARINGS:

NORTH LINE OF THE NW1/4 SECTION 19, T2N R2E,
ALSO BEING THE CENTERLINE OF BALDWIN LANE
PER MB 287/91-95 BEING N89°46'16"E.

BENCH MARK:

FOUND RR SPIKE IN PP#6018BV, 24' WEST OF
HWY 38 & 104' SOUTH OF BALDWIN LN, PER
CSFB 4089/227, NGVD-29 ELEV = 6832.17'



INDEX MAP

NTS

RAMP TABLE:

LOCATION:	RAMPS:	SHEET NUMBER:
LOCATION 1	BALDWIN LANE @ MAPLE LANE, RAMP 1 & 2.	SHEET NUMBER 4
LOCATION 2	BALDWIN LANE @ PARK ENTRANCE, RAMP 3 & 4.	SHEET NUMBER 5
LOCATION 3	BALDWIN LANE @ CREEKSIDE LANE, RAMP 5.	SHEET NUMBER 9

SAN BERNARDINO COUNTY TRAFFIC CONTROL GENERAL NOTES :

- ALL SIGNING, STRIPING AND PAVEMENT MARKINGS SHALL BE IN CONFORMANCE WITH THE CALIFORNIA MUTCD LATEST EDITION.
- ALL STRIPING AND PAVEMENT MARKINGS SHALL BE INSTALLED IN CONFORMANCE WITH THE 2018 CALTRANS STANDARD PLANS DATED OCTOBER, 2018.
- ALL STRIPING (LONG LINE) AND PAVEMENT MARKINGS SHALL BE RETRO-REFLECTIVE PAINT.
- ALL SIGNS SHALL BE OF HIGH INTENSITY (FHWA TYPE III) RETRO-REFLECTIVE SHEETING EXCEPT:
 - "STOP" SIGNS SHALL BE DIAMOND GRADE (FHWA TYPE VII) IN RURAL SETTINGS AND TYPE IX IN URBAN SETTINGS) RETRO-REFLECTIVE SHEETING.
 - "NO PARKING" SIGNS SHALL BE OF SUPER ENGINEERING GRADE (FHWA TYPE II) RETRO-REFLECTIVE SHEETING.
 - SCHOOL SIGNS SHALL BE OF DIAMOND GRADE (FHWA TYPE IX) FLUORESCENT YELLOW-GREEN (FYG) RETRO-REFLECTIVE SHEETING.
 - STREET CLOSURE SIGNS SHALL BE OF DIAMOND GRADE (FHWA TYPE IX) RETRO-REFLECTIVE SHEETING AND COMPLY WITH COUNTY STANDARD 303.
 - CONSTRUCTION SIGNS SHALL BE OF DIAMOND GRADE (FHWA TYPE IX) FLUORESCENT ORANGE RETRO-REFLECTIVE SHEETING.
- ALL Delineators, CHANNEL MARKERS AND OBJECT MARKERS SHALL BE OF (FHWA TYPE VII) RETRO-REFLECTIVE SHEETING.
- SIGNS SHALL BE MOUNTED ON MOUNTS SIMILAR TO COUNTY STANDARDS 303(a) AND 303(b).
- EXISTING STRIPING AND PAVEMENT MARKINGS NOT SHOWN ON PLANS SHALL BE REMOVED BY THE CONTRACTOR. REMOVAL SHALL BE COMPLETED BY SANDBLASTING, GRINDING, OR REMOVAL BY COUNTY REPRESENTATIVE.
- ALL CONFLICTING SIGNS SHALL BE REMOVED, RELOCATED, OR COVERED BY THE CONTRACTOR. RELOCATABLE SIGNS SHALL BE INSTALLED AS SPECIFIED ON THE PLANS OR AS DIRECTED BY COUNTY REPRESENTATIVE.
- ALL UNPROTECTED LOCATIONS RESULTING IN ISOLATED ABRUPT DEPRESSIONS OR ELEVATED OBJECTS (i.e. CATCH BASINS, HEADWALLS, POWER POLES, END TREATMENT OF ASPHALT DIKES AND CONCRETE CURBS) SHALL BE PROTECTED BY DELINEATORS OR BARRIERS PER THE CALIFORNIA MUTCD LATEST EDITION.
- ALL EXISTING SIGN STRIPING AND PAVEMENT MARKINGS (i.e. CROSS STREET STOP, STOP LIMIT LINE, AND CROSSWALK PAVEMENT MARKINGS) NOT SHOWN ON PLANS, IF REMOVED/OBLITERATED, SHALL BE REPLACED/RESTORED OF SAME KIND, AND IN CONFORMANCE WITH THE CALIFORNIA MUTCD LATEST EDITION.
- THE CONTRACTOR SHALL NOTIFY COUNTY REPRESENTATIVE TO SCHEDULE A FINAL REVIEW (WALK THROUGH) WITH TRAFFIC CONTROL PERSONNEL FOR APPROVAL OF TRAFFIC CONTROL DEVICES PRIOR TO PROJECT ACCEPTANCE.

ABBREVIATIONS LEGEND:

AB	=	AGGREGATE BASE	R/W	=	RIGHT OF WAY
AC	=	ASPHALT CONCRETE	SUR	=	SURVEY
APP	=	APPROACH	SHT	=	SHEET
BEG	=	BEGINNING	STA	=	STATION
BVC	=	BEGIN VERTICAL CURVE	S/S	=	SOUTH OF
CL	=	CENTER LINE	S/W	=	SIDEWALK
CP#	=	CONTROL POINT	TFC	=	TOP OF FACE OF CURB
C&G	=	CURB & GUTTER	THK	=	THICKNESS
DWY	=	DRIVEWAY	TYP	=	TYPE
ELEV	=	ELEVATION	VAR	=	VERTICAL CURVE
EP	=	EDGE OF PAVEMENT		=	WHITE
EXIST	=	EXISTING		=	
EVC	=	END VERTICAL CURVE		=	
FL	=	FLOW LINE		=	
GB	=	GRAVEL		=	
GRD	=	GRASS		=	
IMP	=	IMPROVEMENT		=	
INV	=	INVERT		=	
LOC	=	LENGTH OF CURVE		=	
LT	=	LEFT		=	
MAX	=	MAXIMUM		=	
MIN	=	MINIMUM		=	
NTS	=	NOT TO SCALE		=	
OG	=	ORIGINAL GROUND		=	
PCC	=	PORTLAND CEMENT CONCRETE		=	
PI	=	POINT OF INTERSECTION		=	
PL	=	PROPERTY LINE		=	
PP	=	POWER POLE		=	
RT	=	RIGHT		=	

CONSTRUCTION & UNDERGROUND UTILITY LEGEND

	ASPHALT CONCRETE PAVEMENT
	ASPHALT CONCRETE COLD PLANE AND OVERLAY
	PORTLAND CEMENT CONCRETE (SECTION)
	AGGREGATE BASE
	PROPOSED SLOPE
	EXISTING SLOPE
	GAS LINE
	SEWER MAIN
	WATER LINE
	ELECTRIC LINE
	TELEPHONE LINE
	RAMP NUMBER LABEL
	CURB RETURN NUMBER

CONSTRUCTION NOTES:

- UTILITY TO BE RESET BY OTHERS (SEE NOTE U. OF GENERAL NOTES ON THIS SHEET).
- CONSTRUCT 6" ASPHALT CONCRETE SURFACING, FULL DEPTH.
- COLD PLANE (0.10' THK) EXISTING ASPHALT CONCRETE PAVEMENT (2' WIDE MIN.)
- PLACE (0.10') HMA, TYPE A 1/2" AGGREGATE GRADATION, PG 64-16, ASPHALT CONCRETE OVERLAY. (TACK COAT BETWEEN ALL LAYERS)
- CONSTRUCT 6" CURB PER CALTRANS STANDARD A87A, TYPE A1-6.
- CONSTRUCT 6" CURB AND GUTTER PER COUNTY STD 116 (MODIFIED).
- CONSTRUCT 8" CURB PER CALTRANS STANDARD A87A, TYPE A1-8.
- CONSTRUCT 5' CONC. SIDEWALK PER SAN BERNARDINO COUNTY STD 109, TYPE C. (MOD) (4'-2" MIN. CLEARANCE AROUND PP. WIDEN SIDEWALK IF NECESSARY.)
- RESET ROADSIDE SIGN AS SHOWN ON SIGNING AND STRIPING PLANS.
- CONSTRUCT DRIVEWAY PER SPECIAL DWG 135B, SEE SPECIAL PROVISIONS FOR DETAILS.
- CONSTRUCT CURB RAMP PER CALTRANS STD 2018 RSP A88A OR A88B, CASE PER PLAN.
- SAWCUT, REMOVE AND DISPOSE OF EXISTING CONCRETE CURB, GUTTER, SIDEWALK AND RAMP.
- REMOVE AND DISPOSE OF EXISTING PADDLE MARKER.
- REMOVE AND DISPOSE OF EXISTING ASPHALT DIKE.
- PLACE ROCK TREATMENT PER SPEC DWG 112.
- PLACE DETECTABLE WARNING SURFACE PER CALTRANS STANDARD PLAN RSP A88A.
- PLACE 6" ASPHALT CONCRETE DIKE PER CALTRANS STD A87B, TYPE A.
- EXCAVATE BELOW EXISTING ASPHALT PAVEMENT AS NEEDED FOR STRUCTURAL SECTION. COMPACT NATIVE MATERIAL AS SHOWN IN SPECIAL PROVISIONS.
- PLACE (0.55' THK) HMA, TYPE A 1/2" AGGREGATE GRADATION, PG 64-16, ASPHALT CONCRETE, OVER (0.90' THK) CLASS 2 AGGREGATE BASE.
- EXCAVATE BELOW EXISTING ASPHALT PAVEMENT AS NEEDED FOR STRUCTURAL SECTION.
- PLACE (0.50' THK) HMA, TYPE A 1/2" AGGREGATE GRADATION, PG 64-16, ASPHALT CONCRETE, OVER COMPACTED NATIVE SOIL.
- INSTALL METAL HAND RAILINGS PER 2012 STANDARD PLANS FOR PUBLIC WORKS CONSTRUCTION SPPWC 606-4, TYPE A.
- CONSTRUCT CONCRETE SIDEWALK, POP-OUT AROUND EXISTING POWER POLE PER PER DETAIL D ON SHEET 3.
- CONSTRUCT CONCRETE 8" THICK, 7' WIDE SIDEWALK/DRIVEWAY PER DETAIL C ON SHEET 11.
- CONSTRUCT CONCRETE CUT OFF WALL PER DETAIL B ON SHEET 11.
- ADJUST HANDHOLE BOX TO GRADE, SEE SPECIAL PROVISIONS FOR ADDITIONAL INFORMATION.
- GAS MANHOLE TO BE ADJUSTED TO GRADE BY OTHERS, SEE SPECIAL PROVISIONS FOR ADDITIONAL INFORMATION.
- SEWER MANHOLE TO BE ADJUSTED TO GRADE BY OTHERS. SEE SPECIAL PROVISIONS FOR ADDITIONAL INFORMATION.
- ROCKS TO BE MOVED AS SHOWN ON PLAN FOR CONSTRUCTION.
- REMOVE AND DISPOSE OF EXISTING TREE AND STUMP.
- BUSH TO BE REMOVED AND DISPOSED OF, RAKE SMOOTH FOR CONSTRUCTION.
- PROTECT BLOW-OFF VALVE IN PLACE, ADJUST CANISTER TO GRADE. SPECIAL PROVISIONS FOR ADDITIONAL INFORMATION.
- DRILL AND BOND 0.50" DIA (NO. 4) DOWEL BAR INTO EXIST. CONC. SIDEWALK PER CALTRANS STD. P10.

TRAFFIC CONSTRUCTION NOTES:

- PAINT PAVEMENT MARKINGS PER THE CALTRANS 2018 STANDARD PLAN A24D.
- PAINT 12-INCH WHITE LIMIT LINE/STOP LINE PER THE CALTRANS 2018 STANDARD PLAN A24E.
- PAINT DOUBLE-6-INCH YELLOW STRIPE PER THE CALTRANS 2018 STANDARD PLAN A20A, DETAIL 22. ALL PAVEMENT MARKERS INSTALLED PER DETAIL 22 WILL BE RECESSED PER CALTRANS 2018 STANDARD PLAN A20.
- PAINT PAVEMENT MARKINGS NUMERALS PER THE CALTRANS 2018 STANDARD PLAN A20D.
- INSTALL BLUE RETROREFLECTIVE RECESSED PAVEMENT MARKER FOR THE EXISTING FIRE HYDRANT PER THE CALIFORNIA MUTCD DATED 2014, FIGURE 3B-102(CA).
- EXISTING SIGN(S) TO BE RESET LATERALLY AS SHOWN ON PLAN AND PER THE CALIFORNIA MUTCD DATED 2014, FIGURES 2A-2(CA) AND 2C-13(CA).
- PROTECT IN PLACE EXISTING SIGN(S), STRIPING, DELINEATOR, OBJECT MARKER OR PAVEMENT MARKING(S).
- PAINT 6-INCH WIDE, WHITE EDGE LINE STRIPE PER CALTRANS 2018 STD PLAN A20B, DETAIL 27B.
- REMOVE TRAFFIC STRIPE AS SHOWN ON PLAN.
- INSTALL CA TYPE L-1(CA)(OM2-2V) OBJECT MARKER PER THE CA MUTCD 2014, FIGURE 2C-13(CA)
- RE-PAINT 4-INCH WIDE, WHITE PARKING STRIPE AS SHOWN ON PLAN.

FILE NO. 151100-010

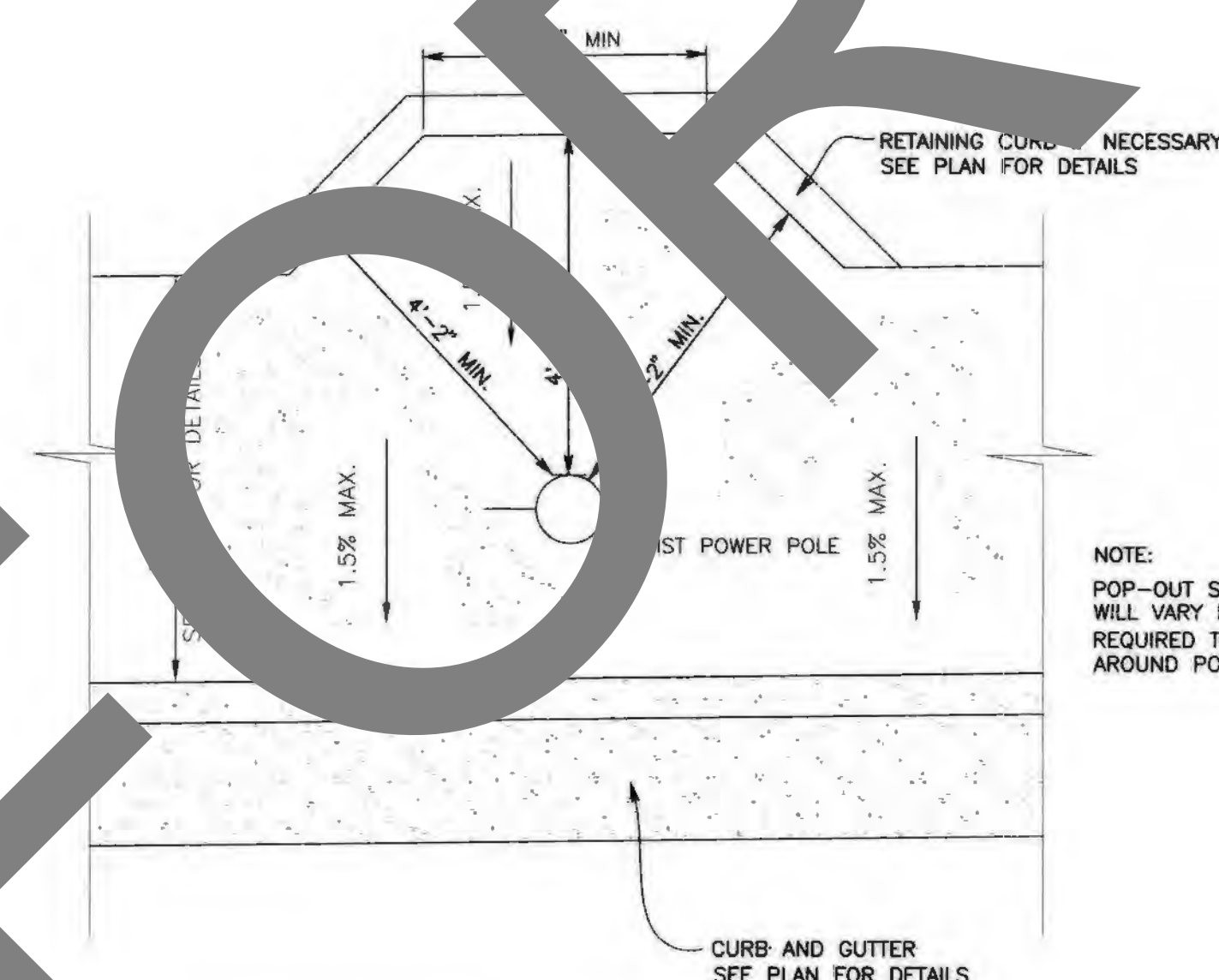
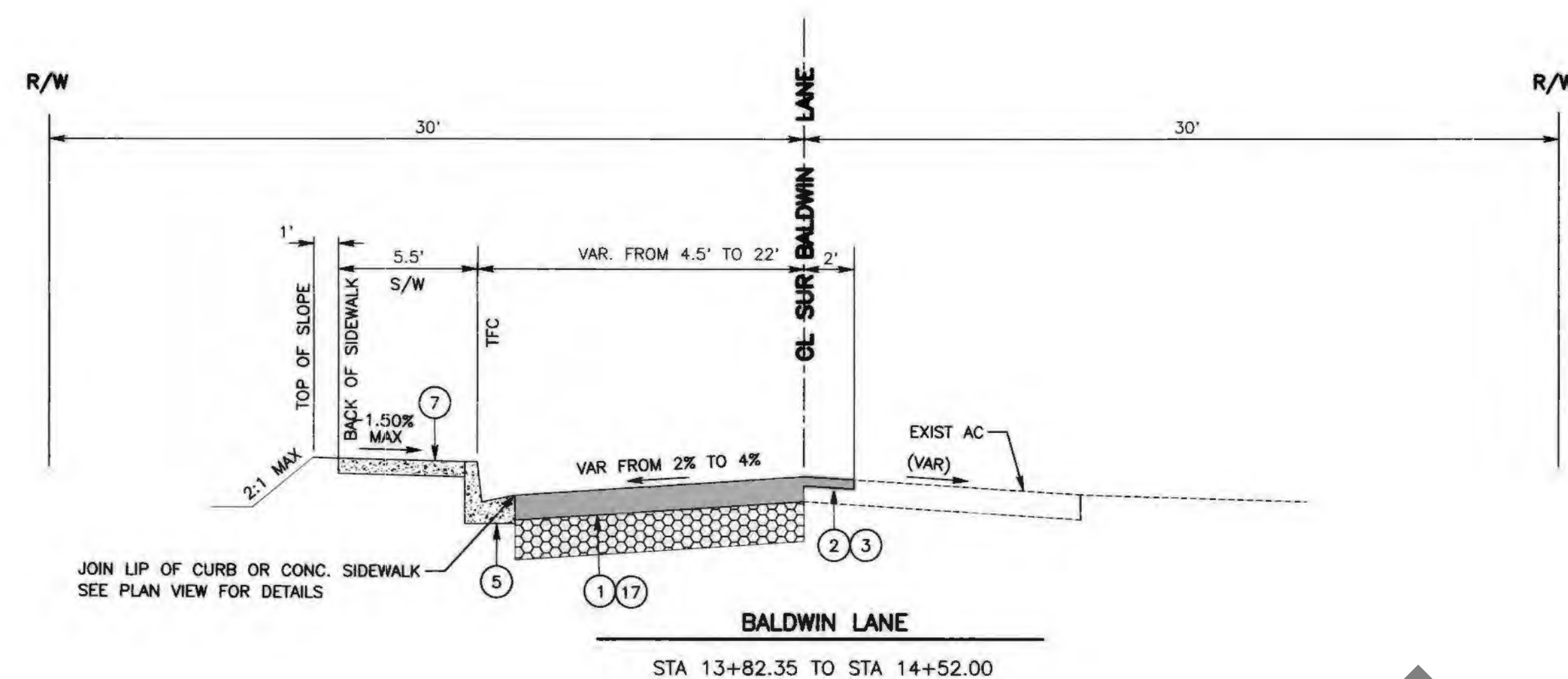
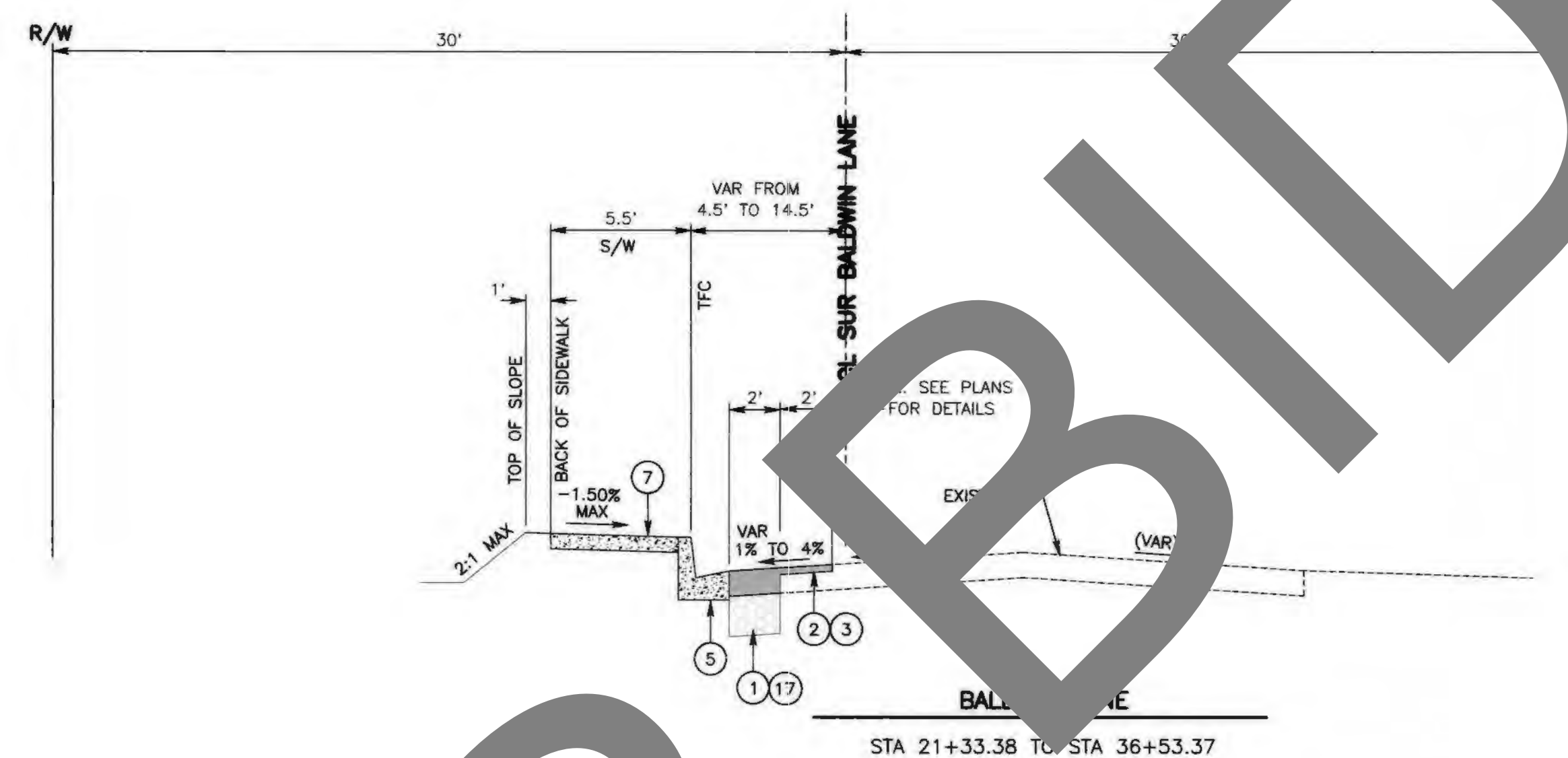
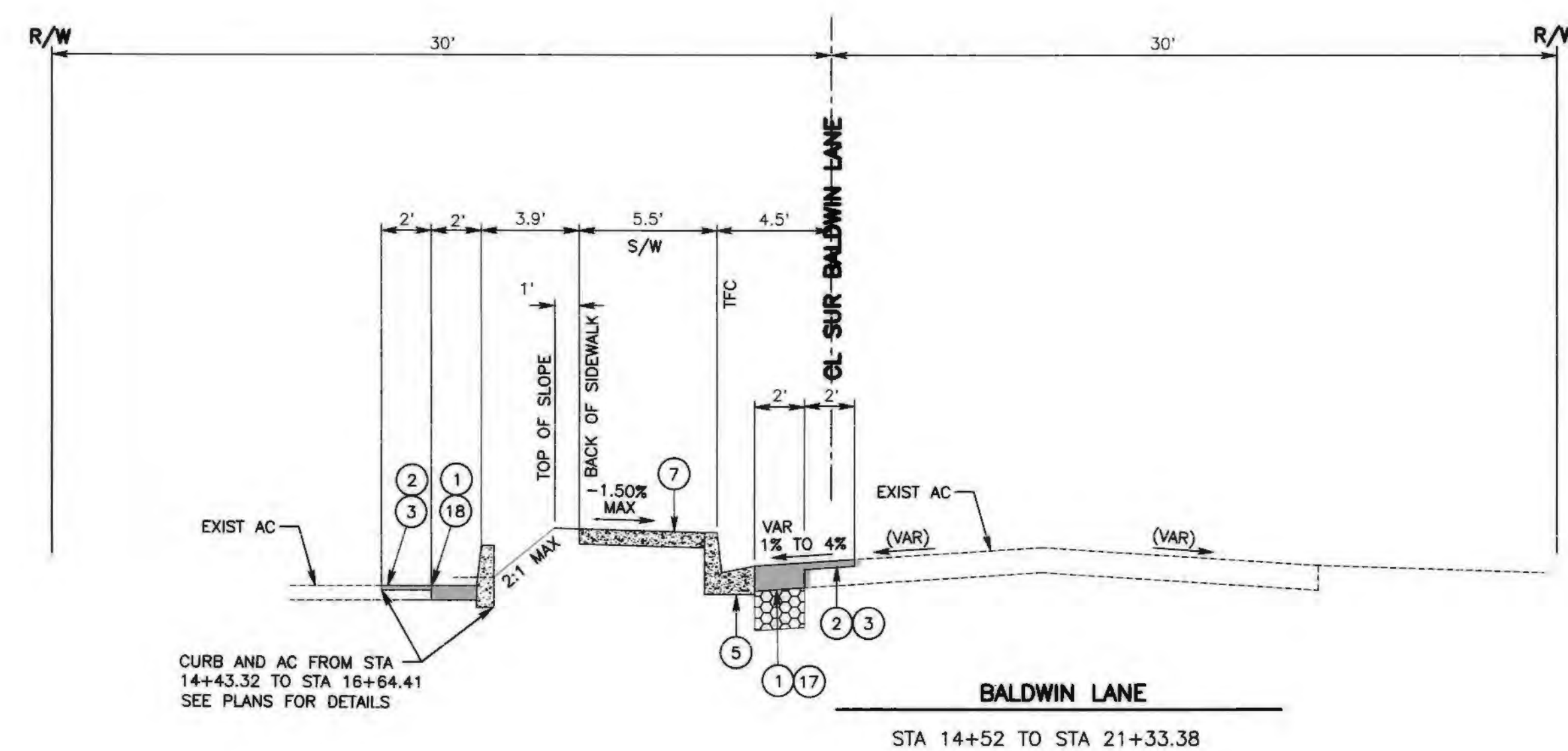
FILE NO. 151100-010

MARK	CHANGES	RESIDENT ENGINEER	DATE
	NO CHANGES		
FIELD CHANGES			



SAN BERNARDINO COUNTY DEPARTMENT OF PUBLIC WORKS			
DESIGNED BY: DJ	DRAWN BY: MDV	CHECKED BY: TB	RECOMMENDED BY: Chris Nguyen, P.E. INTERIM ENGINEERING MANAGER 3/10/22
APPROVED BY: Thomas Bustamonte, P.E. SUPERVISING ENGINEER 3/10/22			DATE: 3/10/22

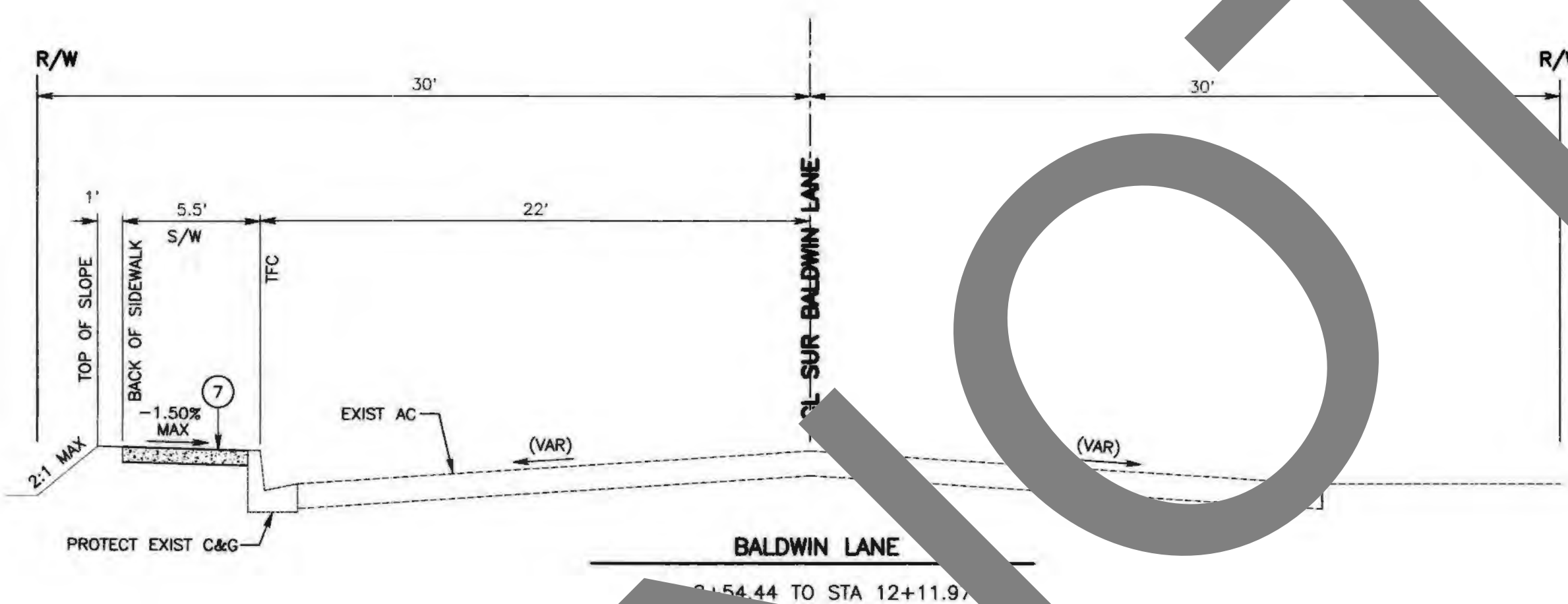
BALDWIN LANE SIDEWALK PROJECT NOTES, INDEX MAP, AND LEGENDS BIG BEAR LAKE AREA				
J.L. REF.	W.O. NO.	PLAN SCALE	SHT. NO.	TOT. SHT'S.
J.L.11757	H15029	NTS	2	13



NOTE:
POP-OUT SIDEWALK AROUND POWER POLE
WILL VARY IN SIZE. FIELD LAYOUT WILL BE
REQUIRED TO MAINTAIN A 4'-2" MIN. DISTANCE
AROUND POWER POLE.

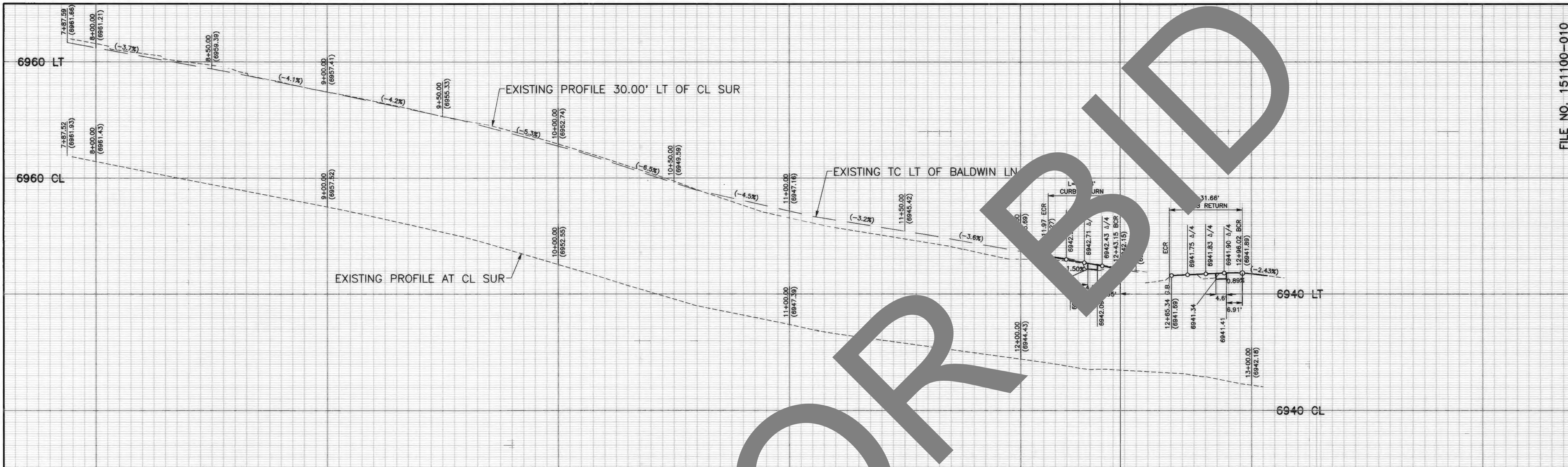
SIDEWALK POP-OUT DETAIL D

NTS



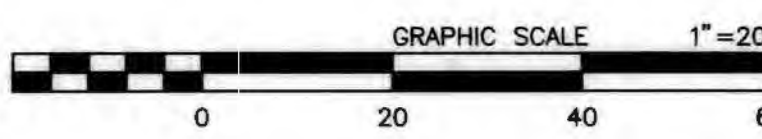
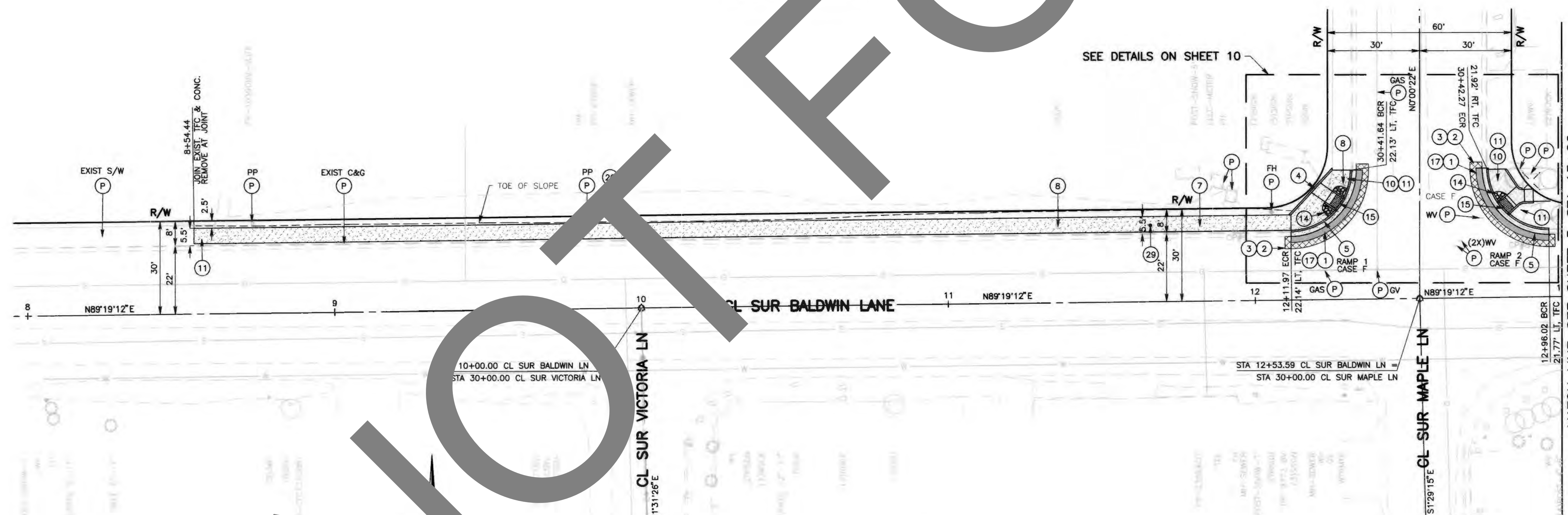
- | | CONSTRUCTION NOTES: |
|----|--|
| 1 | SAWCUT, REMOVE AND DISPOSE OF ASPHALT CONCRETE SURFACING, FULL DEPTH. |
| 2 | COLD PLANE (0.10" THK) EXISTING ASPHALT CONCRETE PAVEMENT (2' WIDE MIN.). |
| 3 | PLACE (0.10") HMA, TYPE A 1/2" AGGREGATE GRADATION, PG 64-16, ASPHALT CONCRETE OVERLAY. (TACK COAT BETWEEN ALL LAYERS) |
| 5 | CONSTRUCT 6" CURB AND GUTTER PER COUNTY STD 116 (MODIFIED). |
| 7 | CONSTRUCT 5' CONC SIDEWALK PER SAN BERNARDINO COUNTY STD 109, TYPE C. (MOD) (4'-2" MIN. CLEARANCE AROUND PP. WIDEN SIDEWALK IF NECESSARY.) |
| 17 | EXCAVATE BELOW EXISTING ASPHALT PAVEMENT AS NEEDED FOR STRUCTURAL SECTION. COMPACT NATIVE MATERIAL AS SHOWN IN SPECIAL PROVISIONS. |
| | PLACE (0.55" THK) HMA, TYPE A 1/2" AGGREGATE GRADATION, PG 64-16, ASPHALT CONCRETE, OVER (0.90" THK) CLASS 2 AGGREGATE BASE. |
| 18 | EXCAVATE BELOW EXISTING ASPHALT PAVEMENT AS NEEDED FOR STRUCTURAL SECTION. |
| | PLACE (0.50" THK) HMA, TYPE A 1/2" AGGREGATE GRADATION, PG 64-16, ASPHALT CONCRETE, OVER COMPACTED NATIVE SOIL. |

[illegible]



PROFILE
SCALE: HORIZ 1"=20'
VERT 1"=20'

- CONSTRUCTION NOTES:**
- U UTILITIES TO BE RESET BY OTHERS (SEE NOTE U. OF GENERAL NOTES ON SHEET 2).
 - P PROTECT IN PLACE.
 - 1 SAWCUT, REMOVE AND DISPOSE OF ASPHALT CONCRETE SURFACING, FULL DEPTH.
 - 2 COLD PLANE (0.10' THK) EXISTING ASPHALT CONCRETE PAVEMENT (2' WIDE MIN.)
 - 3 PLACE (0.10') HMA, TYPE A 1/2" AGGREGATE GRADATION, PG 64-16, ASPHALT CONCRETE OVERLAY. (TACK COAT BETWEEN ALL LAYERS)
 - 4 CONSTRUCT 6" CURB PER CALTRANS STANDARD AB7A, TYPE A1-6.
 - 5 CONSTRUCT 6" CURB AND GUTTER PER COUNTY STD 116 (MODIFIED).
 - 7 CONSTRUCT 5' CONC SIDEWALK PER SAN BERNARDINO COUNTY STD 109, TYPE C. (MOD) (4' MIN. CLEARANCE AROUND PP. WIDEN SIDEWALK IF NECESSARY.)
 - 8 RESET ROADSIDE SIGN AS SHOWN ON SIGNING AND STRIPING PLANS.
 - 10 CONSTRUCT CURB RAMP PER CALTRANS STD 2018 RSP AB8A OR AB8B, CASE PER PLAN.
 - 11 SAWCUT, REMOVE AND DISPOSE OF EXISTING CONCRETE CURB, GUTTER, SIDEWALK AND RAMP.
 - 14 PLACE ROCK TREATMENT PER SPEC DWG 112.
 - 15 PLACE DETECTABLE WARNING SURFACE PER CALTRANS STANDARD PLAN RSP AB8A.
 - 17 EXCAVATE BELOW EXISTING ASPHALT PAVEMENT AS NEEDED FOR STRUCTURAL SECTION. COMPACT NATIVE MATERIAL AS SHOWN IN SPECIAL PROVISIONS.
 - 18 PLACE (0.55' THK) HMA, TYPE A 1/2" AGGREGATE GRADATION, PG 64-16, ASPHALT CONCRETE, OVER (0.90' THK) CLASS 2 AGGREGATE BASE.
 - 20 CONSTRUCT CONCRETE SIDEWALK POP-OUT AROUND EXISTING POWER POLE PER PER DETAIL D ON SHEET 3.
 - 29 PROTECT BLOW-OFF VALVE IN PLACE, ADJUST CANISTER TO GRADE. SPECIAL PROVISIONS FOR ADDITIONAL INFORMATION.



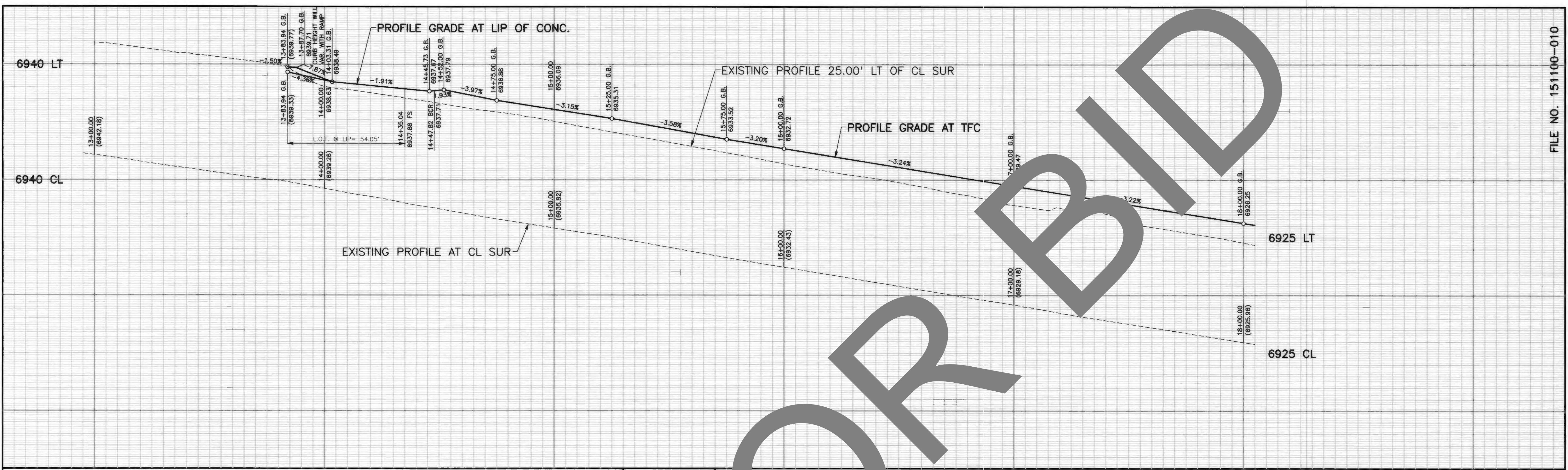
SAN BERNARDINO COUNTY DEPARTMENT OF PUBLIC WORKS				BALDWIN LANE SIDEWALK PLAN AND PROFILE BIG BEAR LAKE AREA STA 8+54.44 TO STA 13+00	
DESIGNED BY: DJ	DRAWN BY: MDV	CHECKED BY: TB	RECOMMENDED BY: Chris Nguyen, P.E. INTERIM ENGINEERING MANAGER	DATE: 3/10/12	DATE: 3/10/12
APPROVED BY: THOMAS BUSTAMANTE, P.E. SUPERVISING ENGINEER			APPROVED BY: Mervyn N. Mikhail, P.E. INTERIM DEPUTY DIRECTOR		
FIELD CHANGES			DATE: 3/10/12		

MARK	CHANGES	RESIDENT ENGINEER	DATE
	NO CHANGES		

3-L. REF.	W.O. NO.	PLAN SCALE	SHT. NO.	TOT. SHTS.
J.L.11757	H15029	1"=20'	4	13

MARK	REVISIONS	DATE

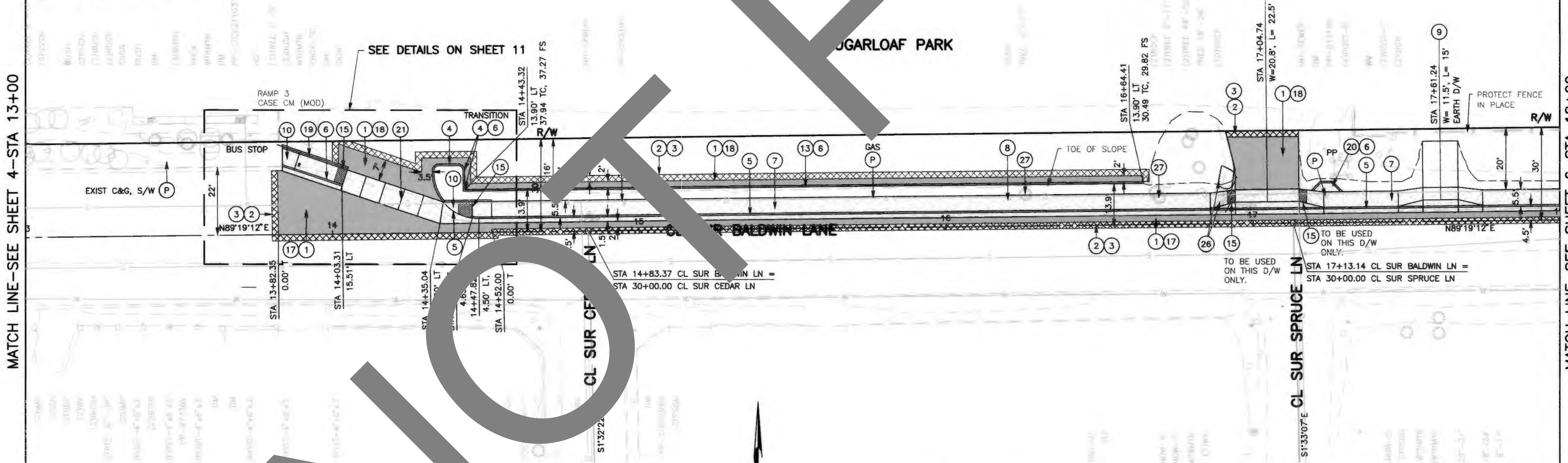
MARK	REVISIONS	DATE



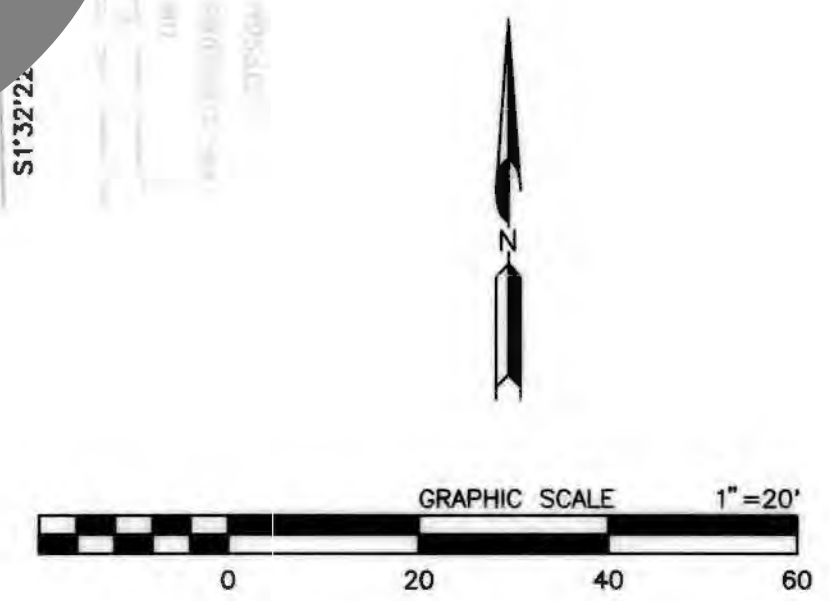
PROFILE
SCALE: HORIZ 1"=100'
VERT 1"=20'

- CONSTRUCTION NOTES:**
- U UTILITIES TO BE RESET BY OTHERS
(SEE NOTE U. OF GENERAL NOTES ON SHEET 2).
 - P PROTECT IN PLACE.
 - 1 SAWCUT, REMOVE AND DISPOSE OF ASPHALT CONCRETE SURFACING, FULL DEPTH.
 - 2 COLD PLANE (0.10' THK) EXISTING ASPHALT CONCRETE PAVEMENT (2' WIDE MIN.)
 - 3 PLACE (0.10') HMA, TYPE A 1/2" AGGREGATE GRADATION, PG 64-16, ASPHALT CONCRETE OVERLAY. (TACK COAT BETWEEN ALL LAYERS)
 - 4 CONSTRUCT 6" CURB PER CALTRANS STANDARD A87A, TYPE A1-6.
 - 5 CONSTRUCT 6" CURB AND GUTTER PER COUNTY STD 116 (MODIFIED).
 - 6 CONSTRUCT 8" CURB PER CALTRANS STANDARD A87A, TYPE A1-8.
 - 7 CONSTRUCT 5' CONC SIDEWALK PER SAN BERNARDINO COUNTY STD 109, TYPE C. (MOD) (4' MIN. CLEARANCE AROUND PP. WIDEN SIDEWALK IF NECESSARY.)
 - 8 RESET ROADSIDE SIGN AS SHOWN ON SIGNING AND STRIPING PLANS.
 - 9 CONSTRUCT DRIVEWAY PER SPECIAL DWG 135B, SEE SPECIAL PROVISIONS FOR DETAILS.
 - 10 CONSTRUCT CURB RAMP PER CALTRANS STD 2018 RSP AB8A OR AB8B, CASE PER PLAN.
 - 11 REMOVE AND DISPOSE OF EXISTING ASPHALT DIKE.
 - 12 PLACE DETECTABLE WARNING SURFACE PER CALTRANS STANDARD PLAN RSP AB8A.
 - 13 EXCAVATE BELOW EXISTING ASPHALT PAVEMENT AS NEEDED FOR STRUCTURAL SECTION. COMPACT NATIVE MATERIAL AS SHOWN IN SPECIAL PROVISIONS.
 - 14 PLACE (0.55' THK) HMA, TYPE A 1/2" AGGREGATE GRADATION, PG 64-16, ASPHALT CONCRETE, OVER (0.90' THK) CLASS 2 AGGREGATE BASE.
 - 15 EXCAVATE BELOW EXISTING ASPHALT PAVEMENT AS NEEDED FOR STRUCTURAL SECTION.
 - 16 PLACE (0.50' THK) HMA, TYPE A 1/2" AGGREGATE GRADATION, PG 64-16, ASPHALT CONCRETE, OVER COMPACTED NATIVE SOIL.
 - 17 INSTALL METAL HAND RAILINGS PER 2012 STANDARD PLANS FOR PUBLIC WORKS CONSTRUCTION SPPWC 606-4, TYPE A.
 - 18 CONSTRUCT CONCRETE SIDEWALK POP-OUT AROUND EXISTING POWER POLE PER PER DETAIL D ON SHEET 3.
 - 19 CONSTRUCT CONCRETE 8" THICK, 7' WIDE SIDEWALK/DRIVEWAY PER DETAIL C ON SHEET 11.
 - 20 SAN BERNARDINO COUNTY STD 109.
 - 21 ROCKS TO BE MOVED AS SHOWN ON PLAN FOR CONSTRUCTION.
 - 22 REMOVE AND DISPOSE OF EXISTING TREE AND STUMP.

BIG BEAR FD STATION 283



MATCH LINE-SEE SHEET 6-STA 18+00

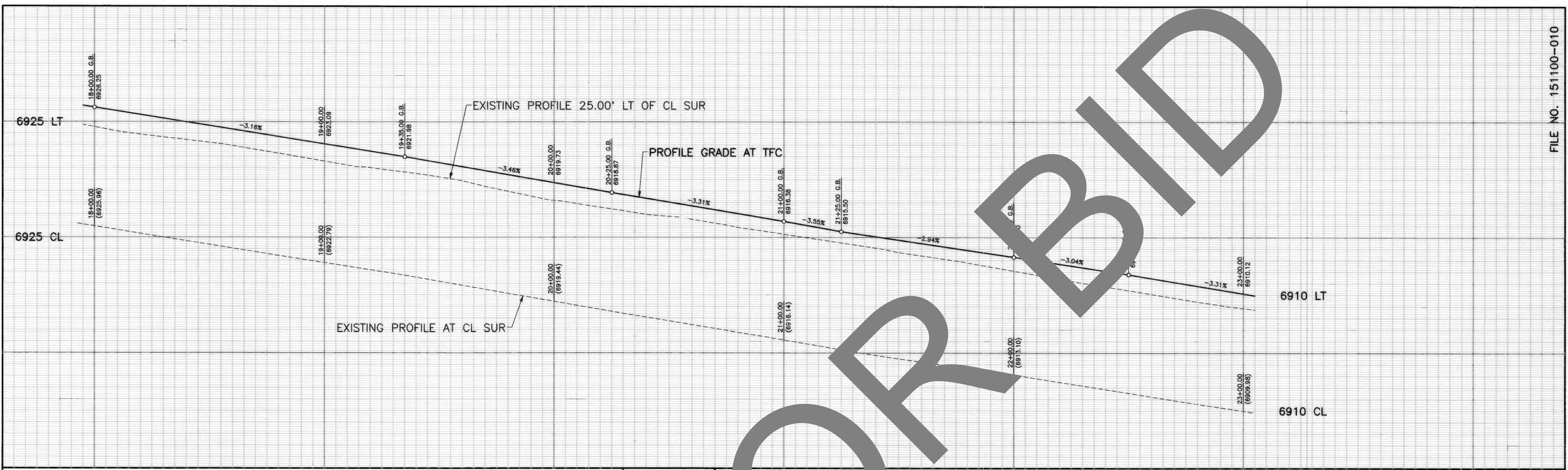


MARK		CHANGES	NO CHANGES	RESIDENT ENGINEER	DATE
FIELD CHANGES					

REGISTERED PROFESSIONAL ENGINEER
CHRIS NGUYEN
No. C63582
CIVIL
STATE OF CALIFORNIA

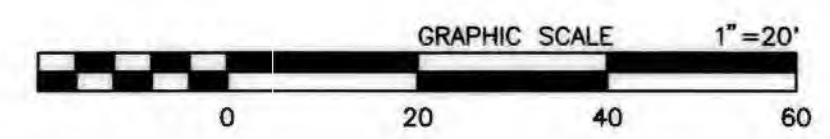
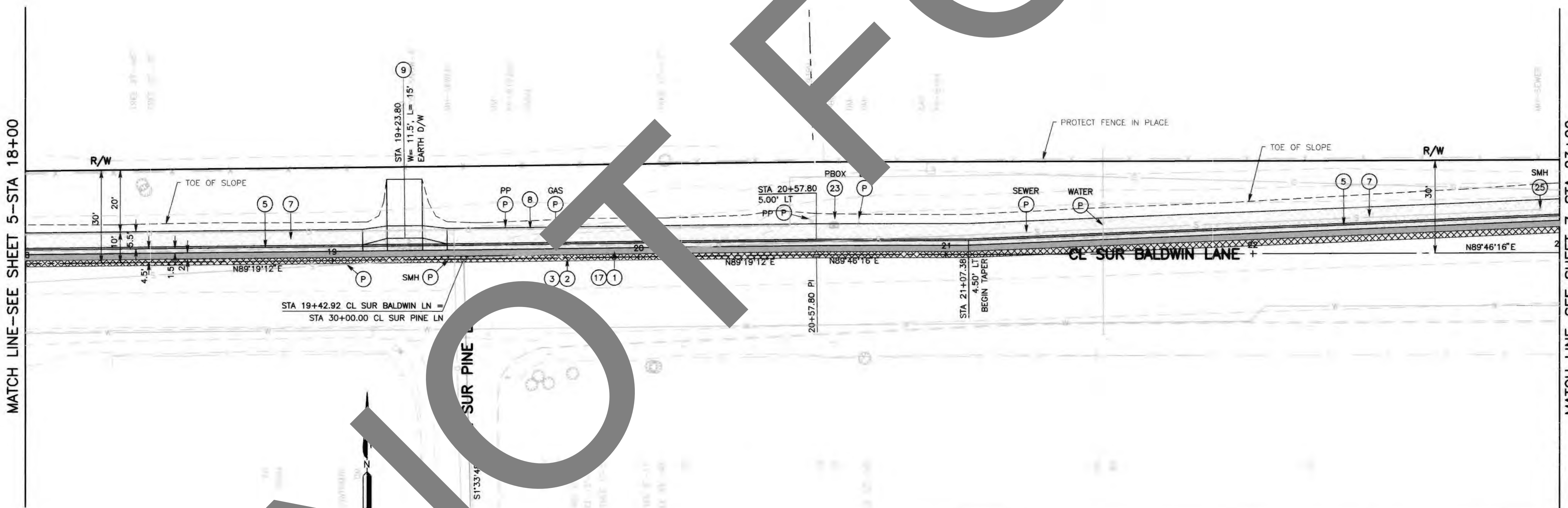
SAN BERNARDINO COUNTY DEPARTMENT OF PUBLIC WORKS			
DESIGNED BY: DJ	DRAWN BY: MDV	CHECKED BY: TB	RECOMMENDED BY: Chris Nguyen, P.E. INTERIM ENGINEERING MANAGER DATE: 3/10/22
APPROVED BY: Thomas Bustamonte, P.E. SUPERVISING ENGINEER DATE: 3/10/22			DATE: 3/10/22

BALDWIN LANE SIDEWALK PLAN AND PROFILE BIG BEAR LAKE AREA STA 13+00 TO STA 18+00			
J.L. REF. J.L.11757	W.O. NO. H15029	PLAN SCALE 1"=20'	SHT. NO. 5
TOT. SHTS. 13			



PROFILE
SCALE: HORIZ 1"=100'
VERT 1"=10'

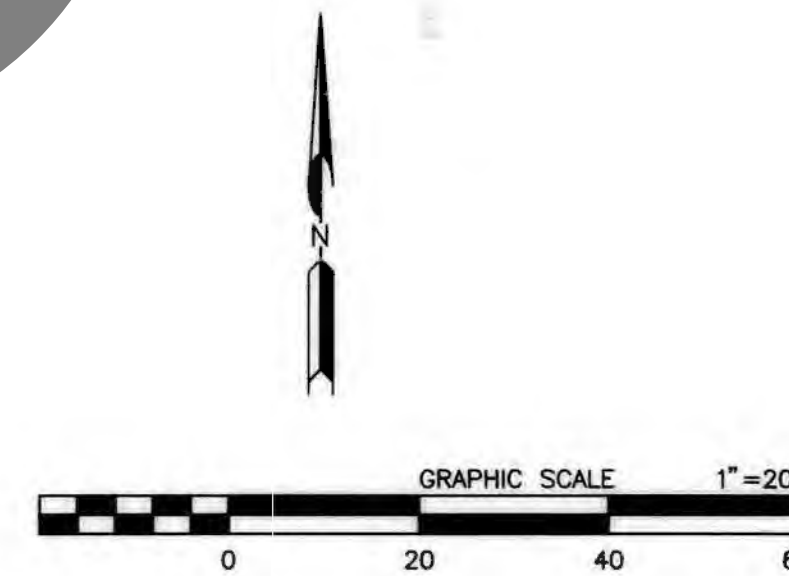
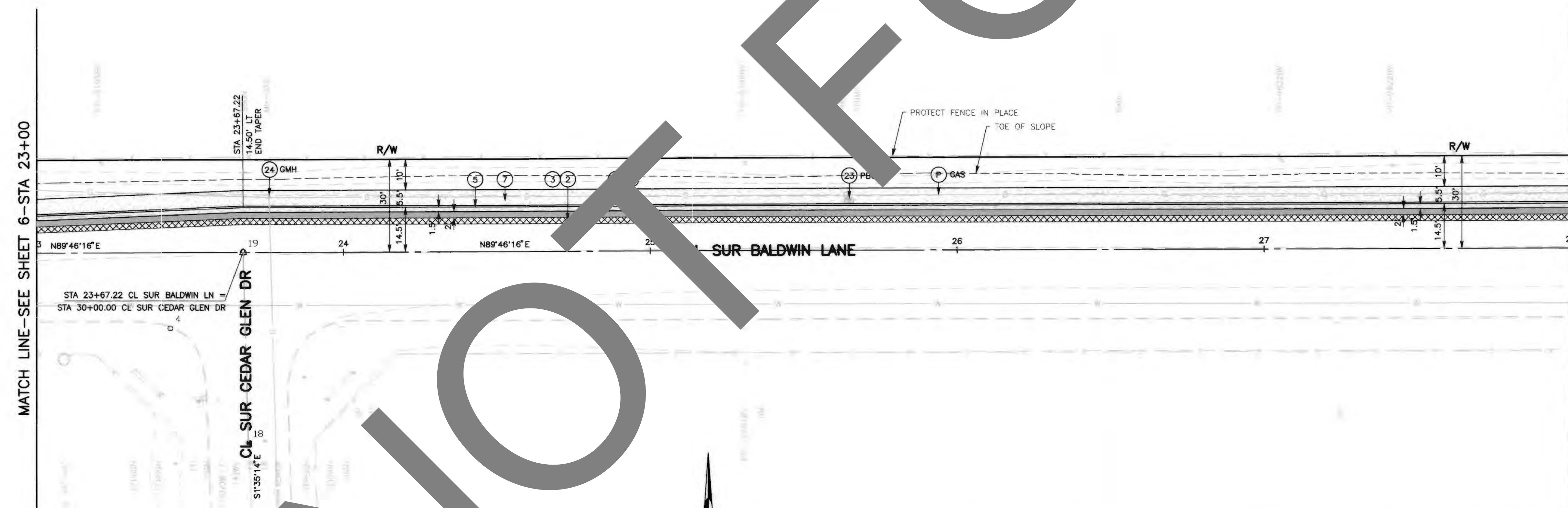
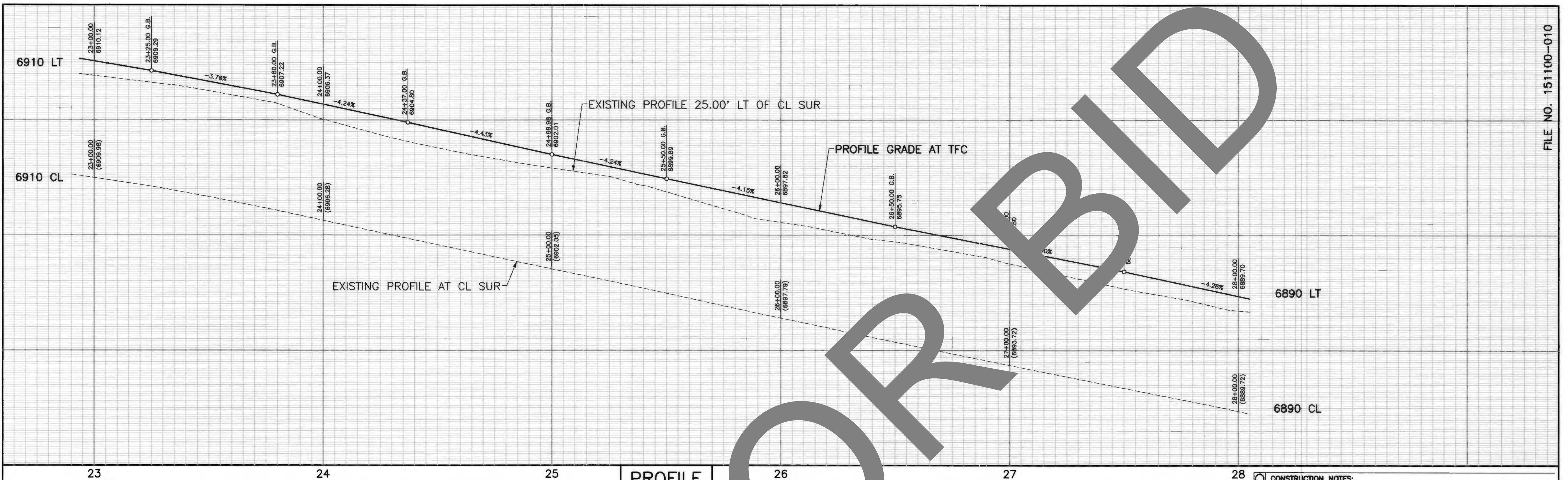
- CONSTRUCTION NOTES:**
- U UTILITIES TO BE RESET BY OTHERS (SEE NOTE U. OF GENERAL NOTES ON SHEET 2).
 - P PROTECT IN PLACE.
 - 1 SAWCUT, REMOVE AND DISPOSE OF ASPHALT CONCRETE SURFACING, FULL DEPTH.
 - 2 COLD PLANE (0.10' THK) EXISTING ASPHALT CONCRETE PAVEMENT (2' WIDE MIN.)
 - 3 PLACE (0.10') HMA, TYPE A 1/2" AGGREGATE GRADATION, PG 64-16, ASPHALT CONCRETE OVERLAY. (TACK COAT BETWEEN ALL LAYERS)
 - 5 CONSTRUCT 6" CURB AND GUTTER PER COUNTY STD 116 (MODIFIED).
 - 7 CONSTRUCT 5' CONC SIDEWALK PER SAN BERNARDINO COUNTY STD 109, TYPE C. (MOD) (4' MIN. CLEARANCE AROUND PP. WIDEN SIDEWALK IF NECESSARY.)
 - 8 RESET ROADSIDE SIGN AS SHOWN ON SIGNING AND STRIPING PLANS.
 - 9 CONSTRUCT DRIVEWAY PER SPECIAL DWG 135B, SEE SPECIAL PROVISIONS FOR DETAILS.
 - 17 EXCAVATE BELOW EXISTING ASPHALT PAVEMENT AS NEEDED FOR STRUCTURAL SECTION. COMPACT NATIVE MATERIAL AS SHOWN IN SPECIAL PROVISIONS.
 - 23 PLACE (0.55' THK) HMA, TYPE A 1/2" AGGREGATE GRADATION, PG 64-16, ASPHALT CONCRETE, OVER (0.90' THK) CLASS 2 AGGREGATE BASE.
 - 25 ADJUST HANDHOLE BOX TO GRADE, SEE SPECIAL PROVISIONS FOR ADDITIONAL INFORMATION.
 - 25 SEWER MANHOLE TO BE ADJUSTED TO GRADE BY OTHERS. SEE SPECIAL PROVISIONS FOR ADDITIONAL INFORMATION.

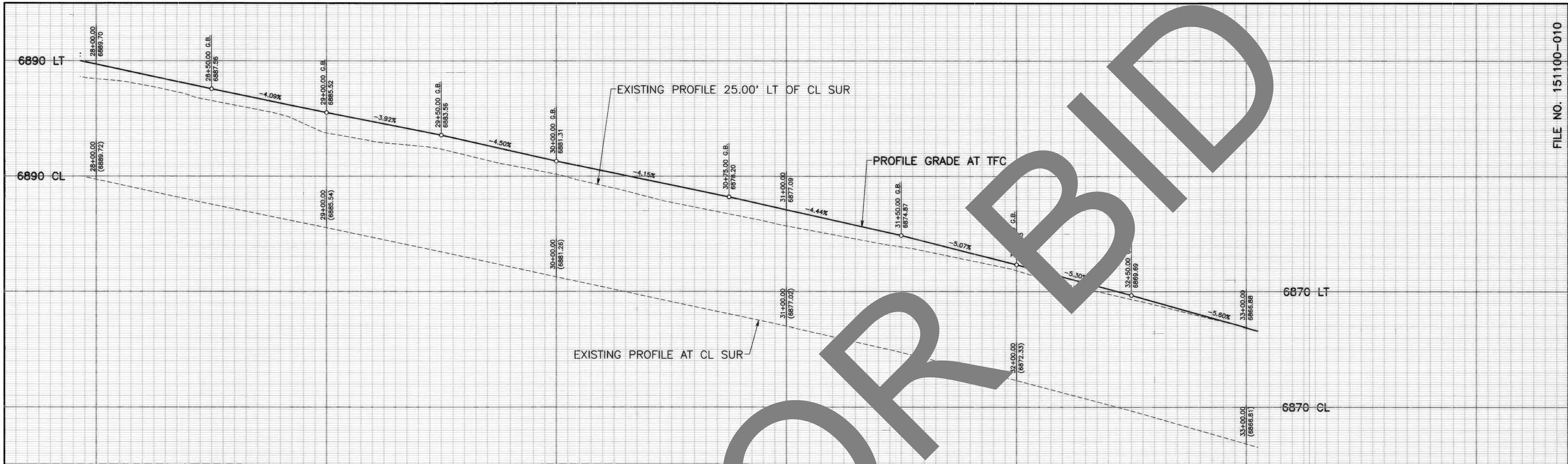


MARK		CHANGES	NO CHANGES	RESIDENT ENGINEER	DATE
FIELD CHANGES					

DESIGNED BY: DJ
DRAWN BY: MDV
CHECKED BY: TB
RECOMMENDED BY: Chris Nguyen, P.E., INTERIM ENGINEERING MANAGER, DATE: 3/10/22
APPROVED BY: Thomas Bustamante, P.E., SUPERVISING ENGINEER, DATE: 3/10/22

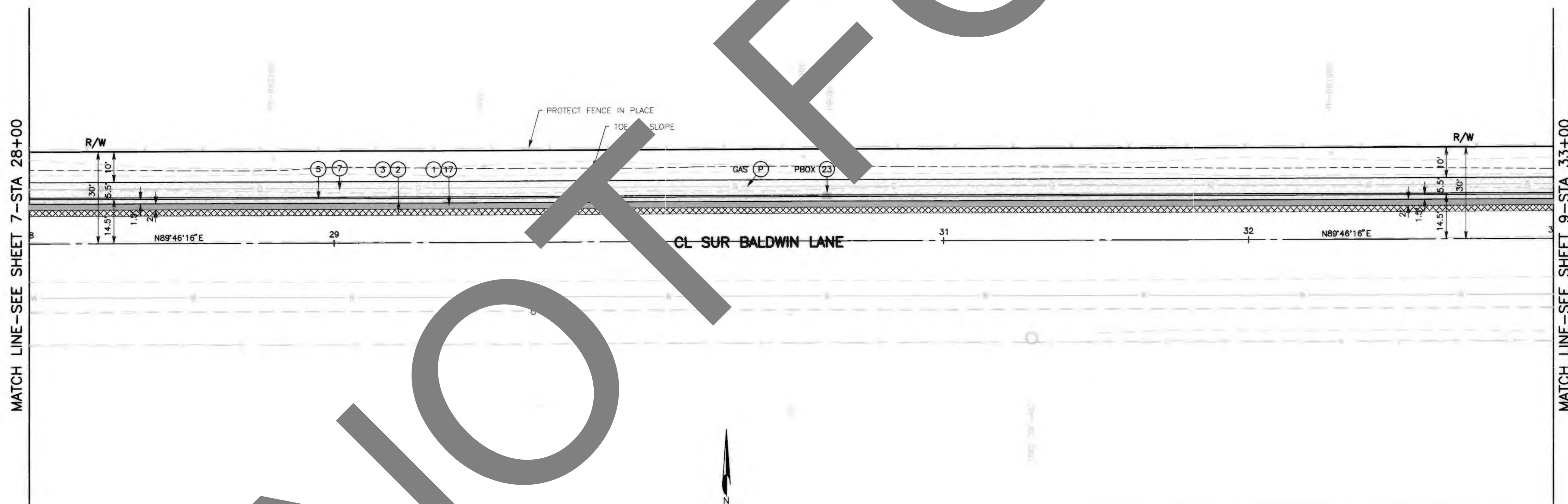
SAN BERNARDINO COUNTY DEPARTMENT OF PUBLIC WORKS				
BALDWIN LANE SIDEWALK PLAN AND PROFILE BIG BEAR LAKE AREA STA 18+00 TO STA 23+00				
J.L. REF.	W.O. NO.	PLAN SCALE	SHT. NO.	TOT. SHT'S.
J.L.11757	H15029	1"=20'	6	13



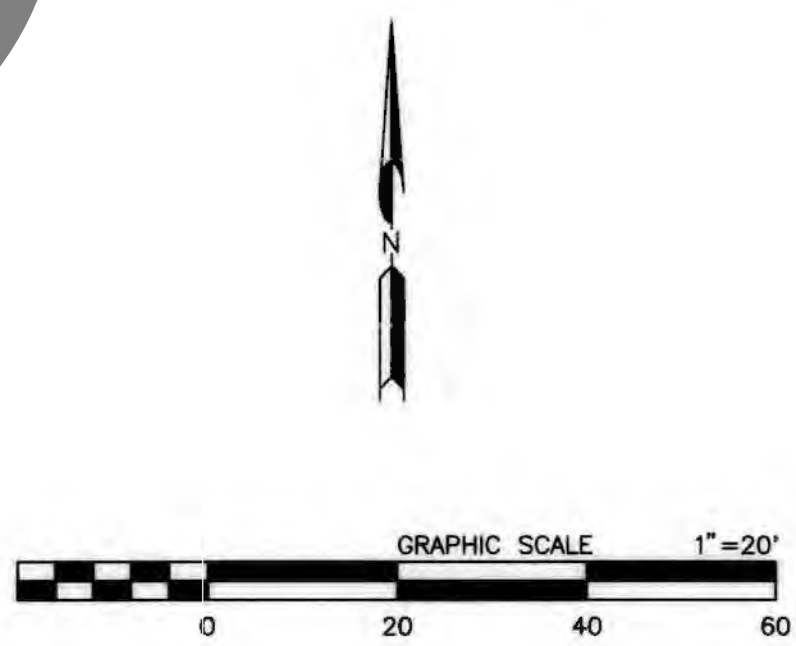


PROFILE
SCALE: HORIZONTAL = 20'
VERTICAL = 10'

- CONSTRUCTION NOTES:
- U UTILITIES TO BE RESET BY OTHERS (SEE NOTE U. OF GENERAL NOTES ON SHEET 2).
 - P PROTECT IN PLACE.
 - 1 SAWCUT, REMOVE AND DISPOSE OF ASPHALT CONCRETE SURFACING, FULL DEPTH.
 - 2 COLD PLANE (0.10' THK) EXISTING ASPHALT CONCRETE PAVEMENT (2' WIDE MIN.).
 - 3 PLACE (0.10' THK) HMA, TYPE A 1/2" AGGREGATE GRADATION, PG 64-16, ASPHALT CONCRETE OVERLAY. (TACK COAT BETWEEN ALL LAYERS)
 - 5 CONSTRUCT 6" CURB AND GUTTER PER COUNTY STD 116 (MODIFIED).
 - 7 CONSTRUCT 5' CONC SIDEWALK PER SAN BERNARDINO COUNTY STD 109, TYPE C. (MOD) (4' MIN. CLEARANCE AROUND PP. WIDEN SIDEWALK IF NECESSARY.)
 - 17 EXCAVATE BELOW EXISTING ASPHALT PAVEMENT AS NEEDED FOR STRUCTURAL SECTION. COMPACT NATIVE MATERIAL AS SHOWN IN SPECIAL PROVISIONS. PLACE (0.55' THK) HMA, TYPE A 1/2" AGGREGATE GRADATION, PG 64-16, ASPHALT CONCRETE, OVER (0.90' THK) CLASS 2 AGGREGATE BASE.
 - 23 ADJUST HANDHOLE BOX TO GRADE, SEE SPECIAL PROVISIONS FOR ADDITIONAL INFORMATION.

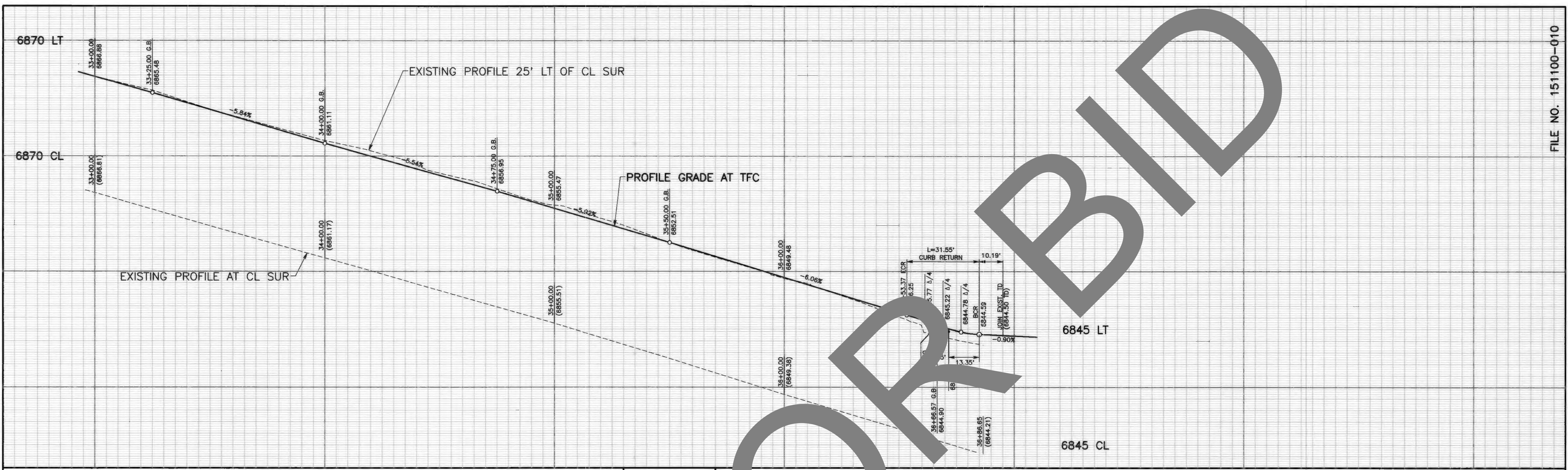


MARK	REVISIONS	DATE



DESIGNED BY: DJ		DRAWN BY: MDV		CHECKED BY: TB		RECOMMENDED BY: Chris Nguyen, P.E. 3/10/22	
APPROVED BY: Thomas Bustamonte, P.E. 3/10/22		APPROVED BY: [Signature] 3/10/22		APPROVED BY: [Signature] 3/10/22		APPROVED BY: [Signature] 3/10/22	
SUPERVISING ENGINEER		INTERIM ENGINEERING MANAGER		INTERIM DEPUTY DIRECTOR		INTERIM DEPUTY DIRECTOR	

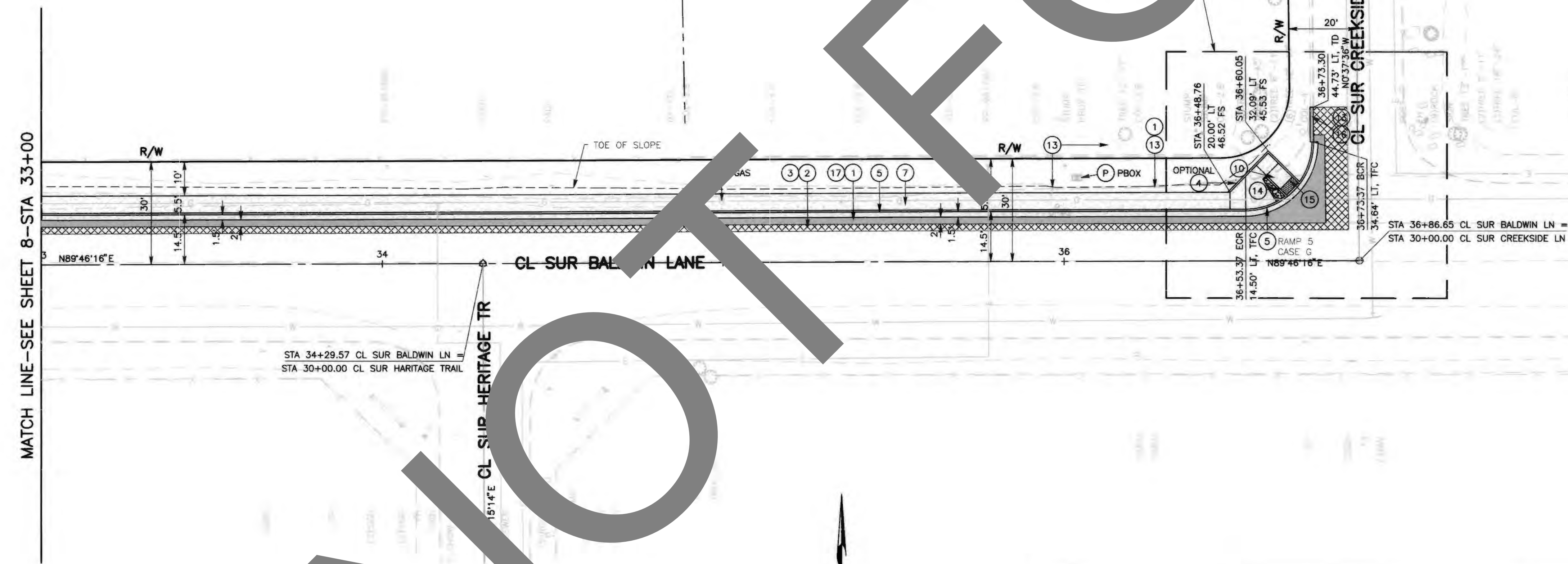
SAN BERNARDINO COUNTY DEPARTMENT OF PUBLIC WORKS		BALDWIN LANE SIDEWALK PLAN AND PROFILE BIG BEAR LAKE AREA STA 28+00 TO STA 33+00		
J.L. REF. J.L.11757	W.O. NO. H15029	PLAN SCALE 1"=20'	SHT. NO. 8	TOT. SHTS. 13



PROFILE
SCALE: HORIZ 1"=20'
VERT 1"=10'

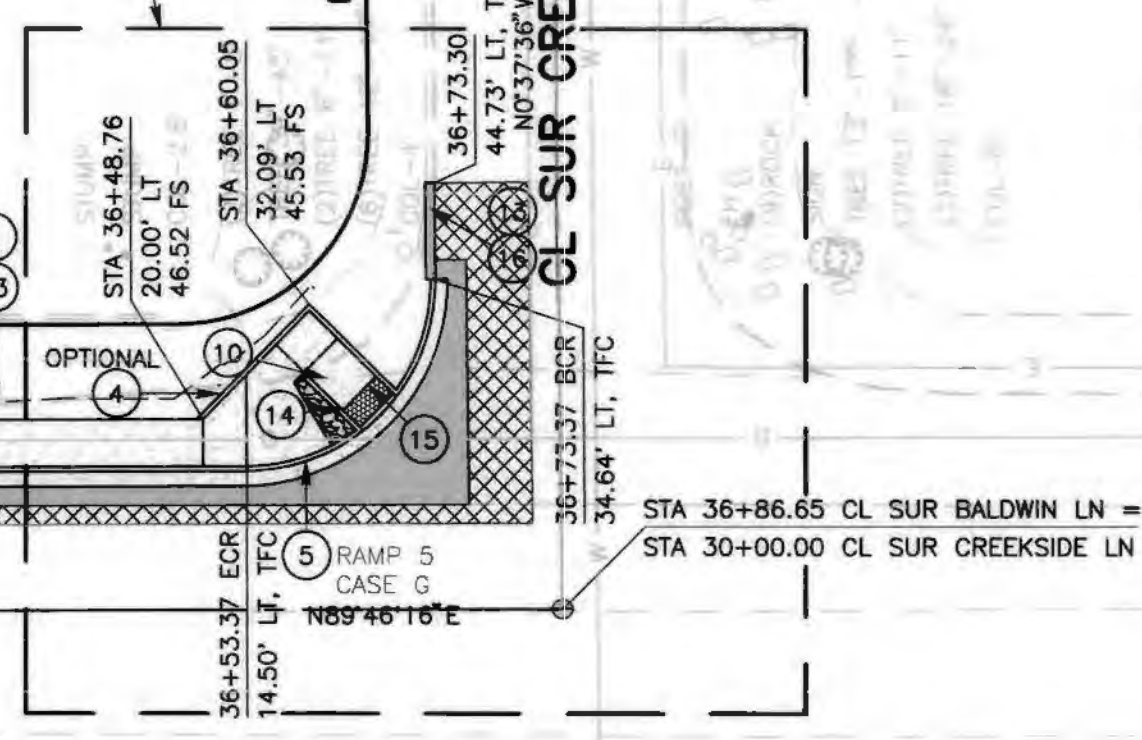
DETAILS ON SHEET 1

- CONSTRUCTION NOTES:**
- U UTILITIES TO BE RESET BY OTHERS
(SEE NOTE U. OF GENERAL NOTES ON SHEET 2).
 - P PROTECT IN PLACE.
 - 1 SAWCUT, REMOVE AND DISPOSE OF ASPHALT CONCRETE SURFACING, FULL DEPTH.
 - 2 COLD PLANE (0.10" THK) EXISTING ASPHALT CONCRETE PAVEMENT (2' WIDE MIN.)
 - 3 PLACE (0.10") HMA, TYPE A 1/2" AGGREGATE GRADATION, PG 64-16, ASPHALT CONCRETE OVERLAY. (TACK COAT BETWEEN ALL LAYERS)
 - 4 CONSTRUCT 6" CURB PER CALTRANS STANDARD A87A, TYPE A1-6.
 - 5 CONSTRUCT 6" CURB AND GUTTER PER COUNTY STD 116 (MODIFIED).
 - 7 CONSTRUCT 5' CONC SIDEWALK PER SAN BERNARDINO COUNTY STD 109, TYPE C. (MOD) (4' MIN. CLEARANCE AROUND PP. WIDEN SIDEWALK IF NECESSARY.)
 - 10 CONSTRUCT CURB RAMP PER CALTRANS STD 2018 RSP AB8A OR AB8B, CASE PER PLAN.
 - 13 REMOVE AND DISPOSE OF EXISTING ASPHALT DIKE.
 - 14 PLACE ROCK TREATMENT PER SPEC DWG 112.
 - 15 PLACE DETECTABLE WARNING SURFACE PER CALTRANS STANDARD PLAN RSP AB8A.
 - 16 PLACE 6" ASPHALT CONCRETE DIKE PER CALTRANS STD A87B, TYPE A.
 - 17 EXCAVATE BELOW EXISTING ASPHALT PAVEMENT AS NEEDED FOR STRUCTURAL SECTION. COMPACT NATIVE MATERIAL AS SHOWN IN SPECIAL PROVISIONS. PLACE (0.55" THK) HMA, TYPE A 1/2" AGGREGATE GRADATION, PG 64-16, ASPHALT CONCRETE, OVER (0.90" THK) CLASS 2 AGGREGATE BASE.



MATCH LINE - SEE SHEET 8 - STA 33+00

STA 34+29.57 CL SUR BALDWIN LN =
STA 30+00.00 CL SUR HERITAGE TRAIL



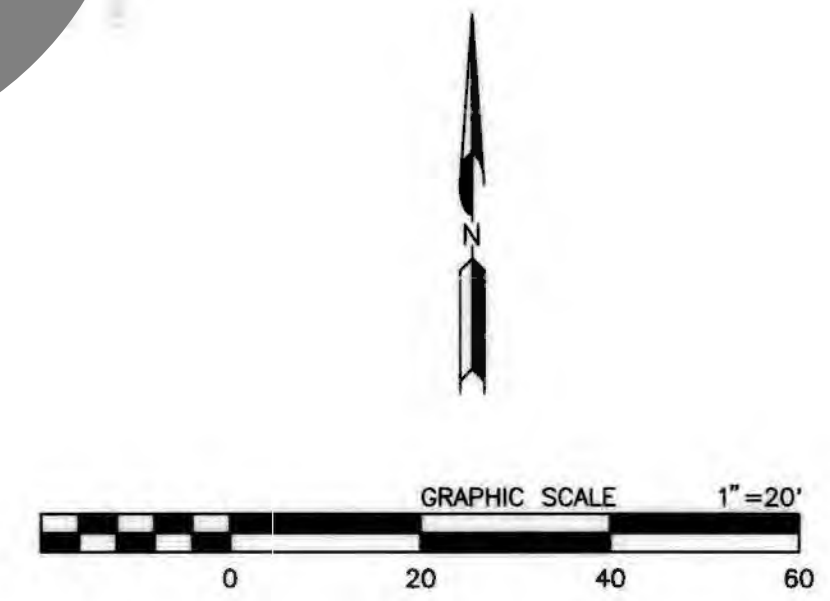
STA 36+48.76
20.00' LT
46.52 FS

STA 36+60.05
32.00' LT
45.53 FS

STA 36+73.30
44.73' LT, TD
46.52 FS

STA 36+86.65
34.64' LT, TFC

STA 36+86.65 CL SUR BALDWIN LN =
STA 30+00.00 CL SUR CREEKSIDE LN



MARK		CHANGES	NO CHANGES	RESIDENT ENGINEER	DATE
FIELD CHANGES					

REGISTERED PROFESSIONAL ENGINEER
CHRIS NGUYEN
No. C63582
CIVIL
STATE OF CALIFORNIA

SAN BERNARDINO COUNTY DEPARTMENT OF PUBLIC WORKS			
DESIGNED BY: DJ	DRAWN BY: MDV	CHECKED BY: TB	RECOMMENDED BY: Chris Nguyen, P.E. INTERIM ENGINEERING MANAGER DATE: 3/10/22
APPROVED BY: Thomas Gustamonte, P.E. SUPERVISING ENGINEER DATE: 3/8/22			APPROVED BY: Mervyn N. Mikhail, P.E. INTERIM DEPUTY DIRECTOR DATE: 3/10/22

BALDWIN LANE SIDEWALK PLAN AND PROFILE BIG BEAR LAKE AREA STA 33+00 TO STA 37+00			
J.L. REF. J.L.11757	W.O. NO. H15029	PLAN SCALE 1"=20'	SHT. NO. 9
TOT. SHT'S. 13			

MARK	REVISIONS	DATE

MARK	REVISIONS	DATE

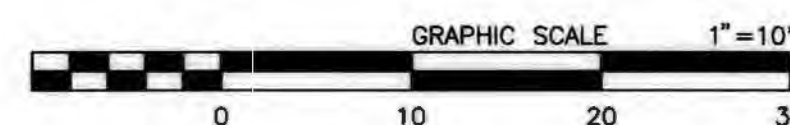
NOTE:
SEE PROFILE ON SHEET 4 FOR ADDITIONAL INFORMATION.

NOTE:
SEE PROFILE ON SHEET 4 FOR ADDITIONAL INFORMATION.

CURVE TABLE				
NO.	DELTA	RADIUS	LENGTH	TANGENT
C1	89°18'50"	20.00'	31.18'	19.76
C2	90°41'10"	20.00'	31.66'	20.24

- CONSTRUCTION NOTES:
- U UTILITIES TO BE RESET BY OTHERS
(SEE NOTE U. OF GENERAL NOTES ON SHEET 2).
 - P PROTECT IN PLACE.
 - 1 SAWCUT, REMOVE AND DISPOSE OF ASPHALT CONCRETE SURFACING, FULL DEPTH.
 - 2 COLD PLANE (0.10' THK) EXISTING ASPHALT CONCRETE PAVEMENT (2' WIDE MIN.)
 - 3 PLACE (0.10') HMA, TYPE A 1/2" AGGREGATE GRADATION, PG 64-16, ASPHALT CONCRETE OVERLAY. (TACK COAT BETWEEN ALL LAYERS)
 - 4 CONSTRUCT 6" CURB PER CALTRANS STANDARD A87A, TYPE A1-6.
 - 5 CONSTRUCT 6" CURB AND GUTTER PER COUNTY STD 116 (MODIFIED).
 - 7 CONSTRUCT 5' CONC SIDEWALK PER SAN BERNARDINO COUNTY STD 109, TYPE C. (MOD) (4' MIN. CLEARANCE AROUND PP. WIDEN SIDEWALK IF NECESSARY.)
 - 8 RESET ROADSIDE SIGN AS SHOWN ON SIGNING AND STRIPING PLANS.
 - 10 CONSTRUCT CURB RAMP PER CALTRANS STD 2018 RSP AB8A OR AB8B, CASE PER PLAN.
 - 11 SAWCUT, REMOVE AND DISPOSE OF EXISTING CONCRETE CURB, GUTTER, SIDEWALK AND RAMP.
 - 14 PLACE ROCK TREATMENT PER SPEC DWG 112.
 - 15 PLACE DETECTABLE WARNING SURFACE PER CALTRANS STANDARD PLAN RSP AB8A.
 - 17 EXCAVATE BELOW EXISTING ASPHALT PAVEMENT AS NEEDED FOR STRUCTURAL SECTION. COMPACT NATIVE MATERIAL AS SHOWN IN SPECIAL PROVISIONS. PLACE (0.55' THK) HMA, TYPE A 1/2" AGGREGATE GRADATION, PG 64-16, ASPHALT CONCRETE, OVER (0.90' THK) CLASS 2 AGGREGATE BASE.
 - 28 BUSH TO BE REMOVED AND DISPOSED OF RAKE SMOOTH FOR CONSTRUCTION.

CAUTION:
ALL STATIONING NOTES ON PLAN REFER TO THE C.L. OF BALDWIN LN. OR SIDE STREET. ELEVATIONS SHOWN HAVE BEEN CALCULATED FROM INTERPOLATED POINTS.
IT WILL BE THE CONTRACTORS RESPONSIBILITY TO VERIFY CURB RAMPS GRADES, DIMENSIONS, ELEVATIONS AND COMPLY WITH 2018 CALTRANS STANDARD RSP A88A. IF NECESSARY MAKE ADJUSTMENTS AS APPROVED BY THE ENGINEER.



MARK		CHANGES		RESIDENT ENGINEER		DATE	
NO CHANGES							
FIELD CHANGES							

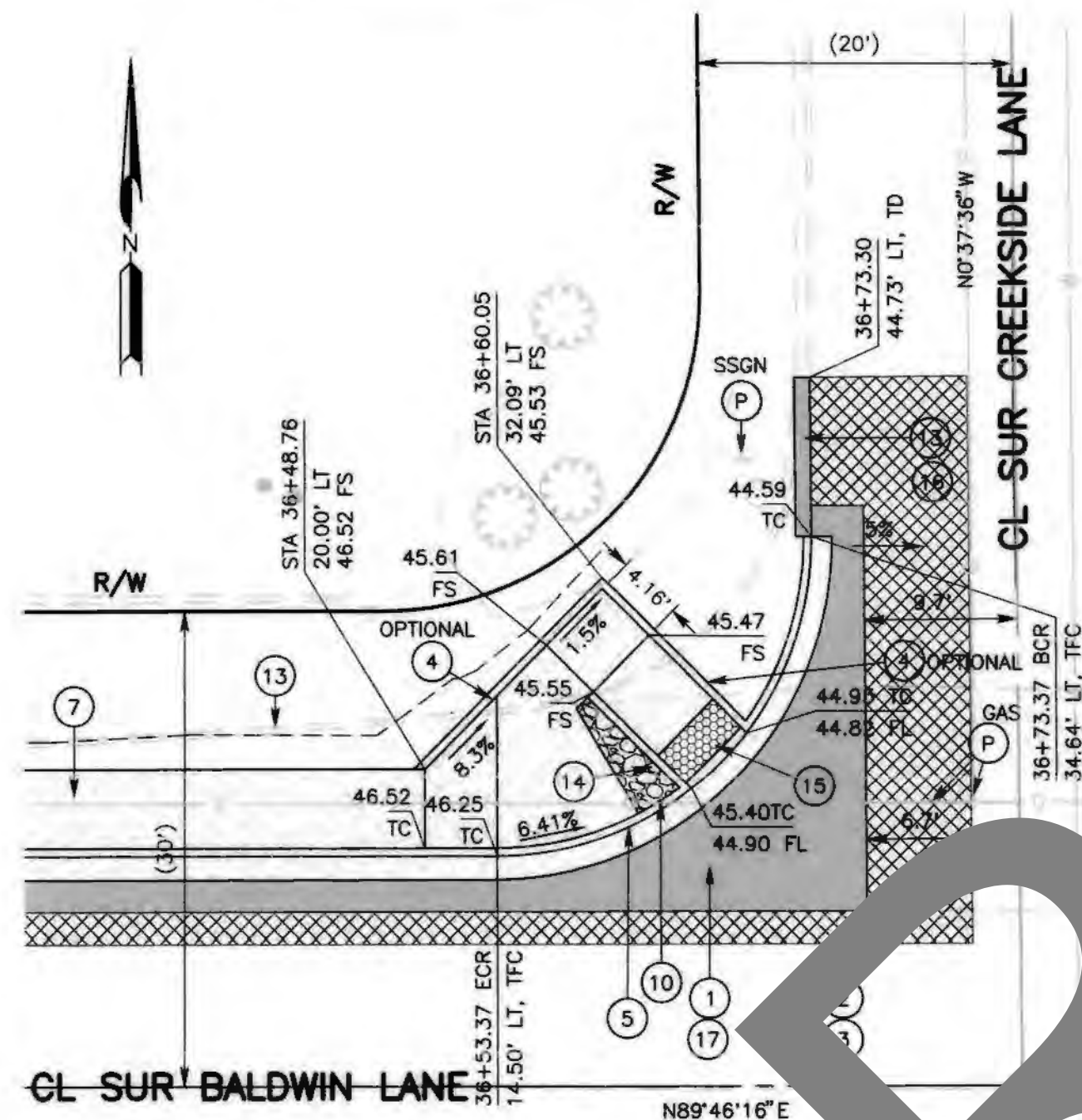
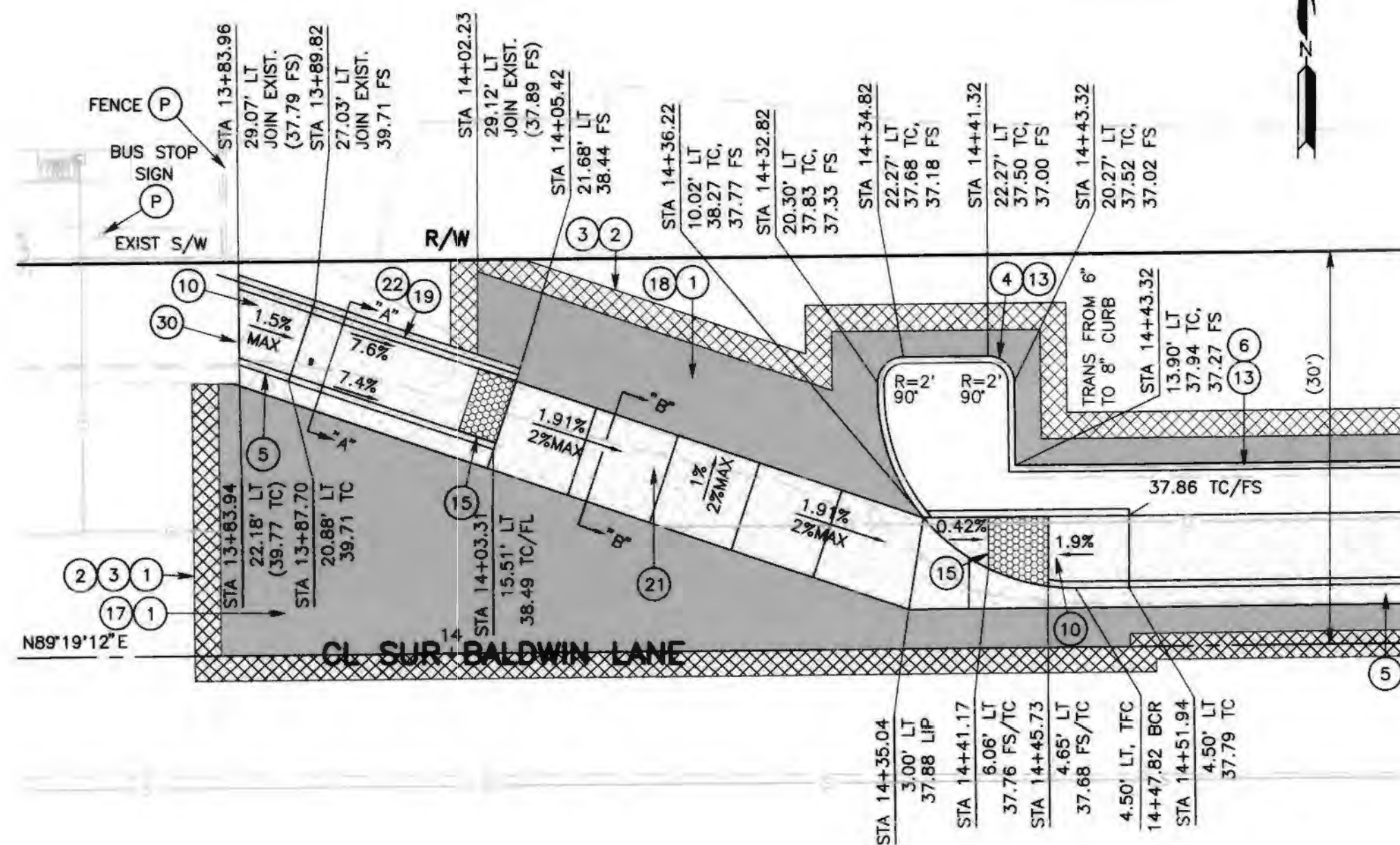
REGISTERED PROFESSIONAL ENGINEER
CHRIS NGUYEN
No. C63582
CIVIL
STATE OF CALIFORNIA

SAN BERNARDINO COUNTY DEPARTMENT OF PUBLIC WORKS				BALDWIN LANE SIDEWALK CURB RETURN DETAILS BIG BEAR LAKE AREA			
DESIGNED BY: DJ	DRAWN BY: MDV	CHECKED BY: TB	RECOMMENDED BY: Chris Nguyen 3/10/22	DATE			
APPROVED BY: Thomas Bustamonte 3/8/22			APPROVED BY: Merritt N. Minshall 3/10/22			DATE	
THOMAS BUSTAMONTE, P.E. SUPERVISING ENGINEER			MERRITT N. MINSHALL, P.E. INTERIM DEPUTY DIRECTOR			DATE	

J.L. REF.	W.O. NO.	PLAN SCALE	SHT. NO.	TOT. SHT'S.
J.L.11757	H15029	1"=10'	10	13

NOTE:
SEE PROFILE ON SHEET 5 FOR ADDITIONAL INFORMATION.

NOTE:
SEE PROFILE ON SHEET 9 FOR ADDITIONAL INFORMATION.



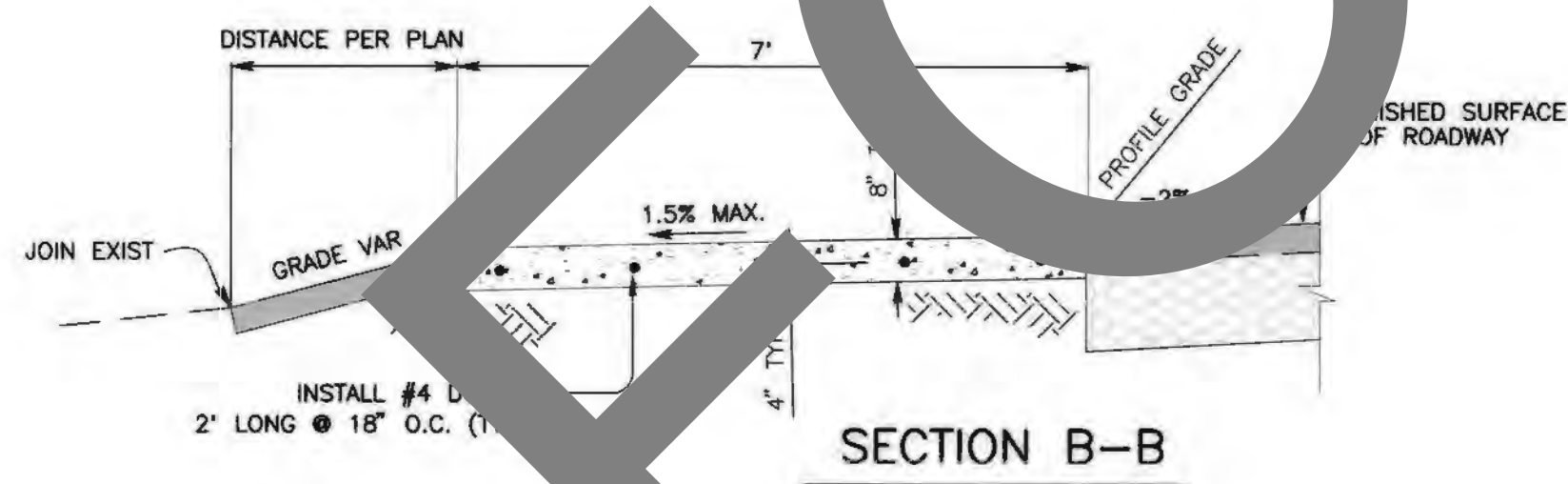
CAUTION:
ALL STATIONING NOTES ON PLAN REFER TO THE C.L. SUR BALDWIN LN. OR SIDE STREET. ELEVATIONS SHOWN HAVE BEEN CALCULATED FROM INTERPOLATED POINTS.
IT WILL BE THE CONTRACTORS RESPONSIBILITY TO VERIFY ALL CURB RAMP GRADES, DIMENSIONS, ELEVATIONS AND COMPLY WITH 2018 CALTRANS STANDARD RSP A88A. IF NECESSARY MAKE ADJUSTMENTS AS APPROVED BY THE ENGINEER.

N RAMP "3" CASE CM (MOD)- BALDWIN LANE

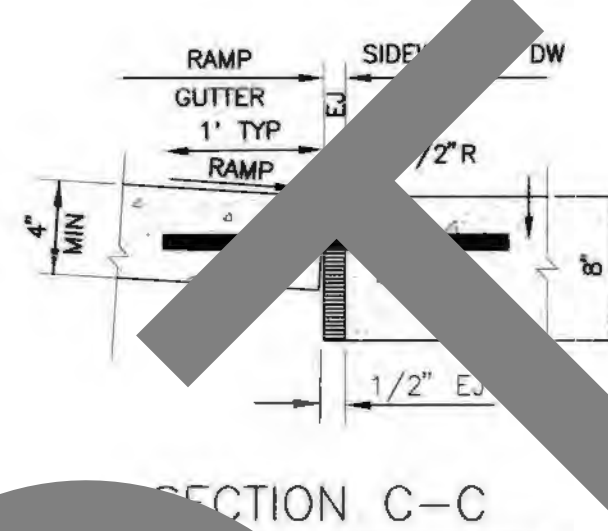
N RAMP "4" CASE CM (MOD)- BALDWIN LANE

NW RAMP "5" CASE CM (MOD)- BALDWIN LANE

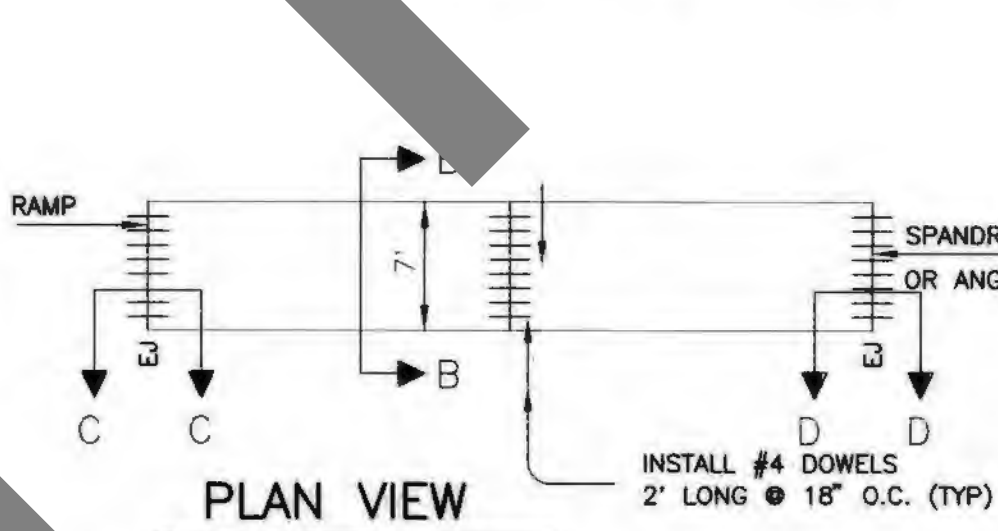
CURVE TABLE				
NO.	DELTA	RADIUS	LENGTH	TANGENT
C3	90°00'00"	15.00'	23.56'	15.00
C4	90°23'52"	20.00'	31.55'	20.14



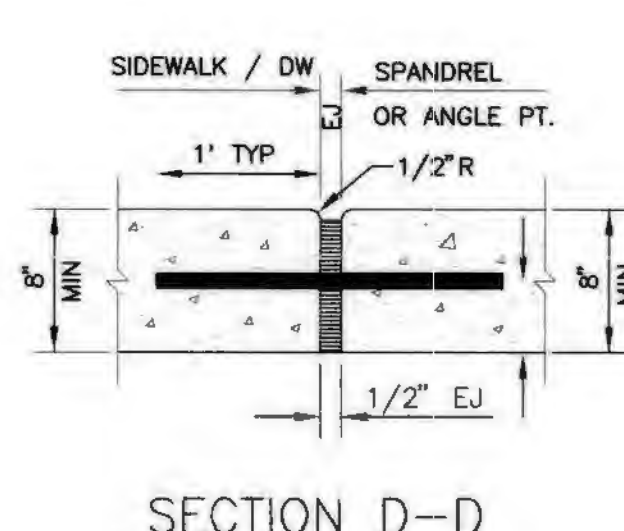
SECTION B-B



SECTION C-C



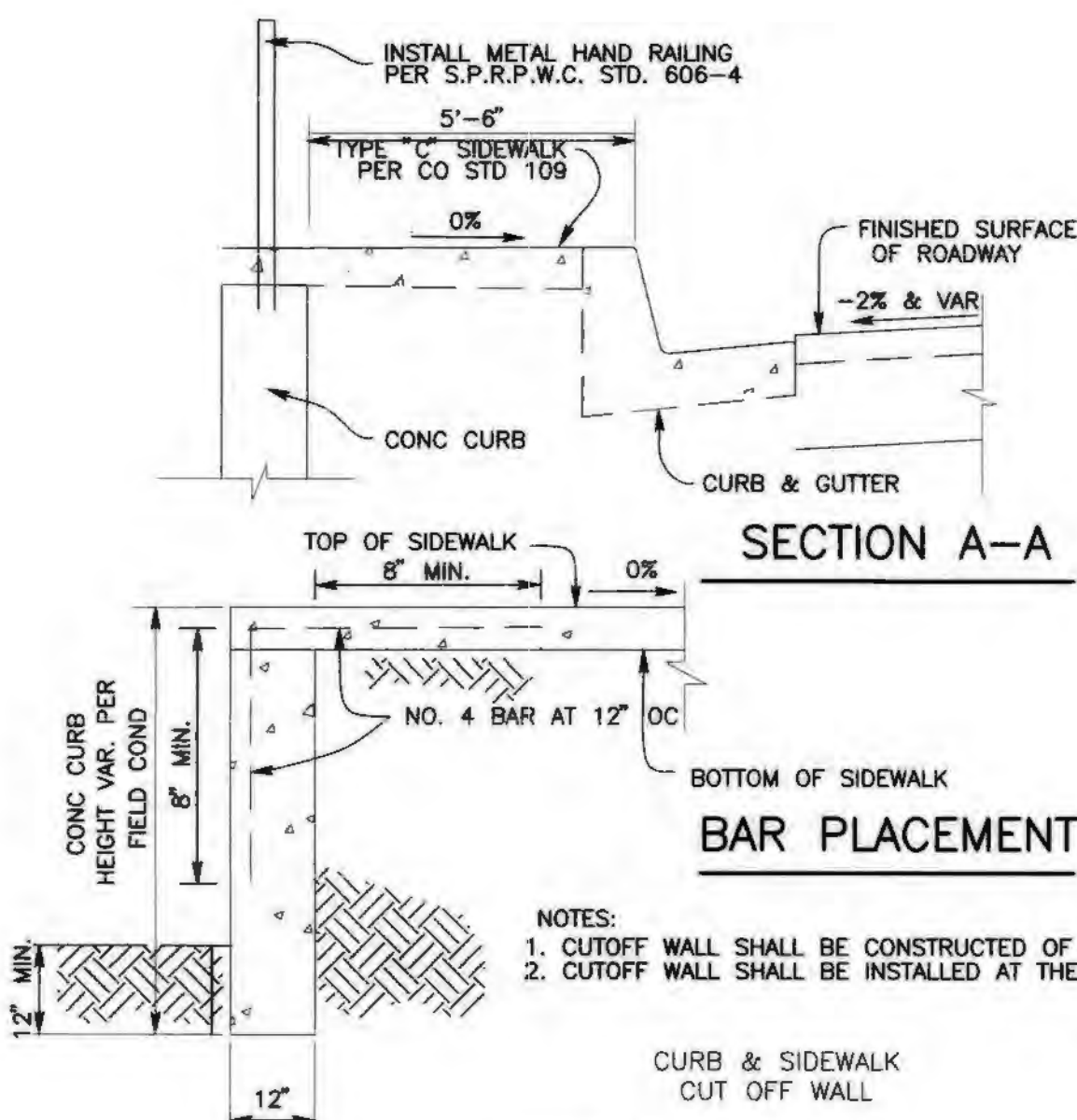
PLAN VIEW



SECTION D-D

- NOTES:
1. THE SIDEWALK / DRIVEWAY & SPANDREL SHALL BE CONSTRUCTED OF MINOR CONCRETE.
 2. WEAKENED PLANE JOINTS ALONG THE CROSS GUTTER SHALL BE CONSTRUCTED AT 8' MAXIMUM SPACING OR 6' SPACING TO SPLIT TRAFFIC LANES.
- EJ INDICATES PREMOLDED EXPANSION JOINT FILLER PER ASTM DESIGNATION D 1751.
WPJ INDICATES WEAKENED PLANE JOINT.

DETAIL C
NTS

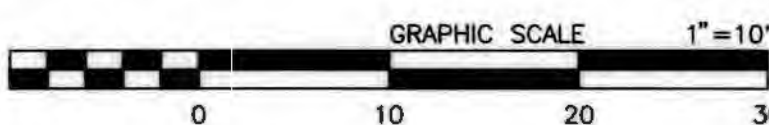


SECTION A-A

BAR PLACEMENT

DETAIL B
NTS

- CONSTRUCTION NOTES:
1. UTILITIES TO BE RESET BY OTHERS (SEE NOTE U. OF GENERAL NOTES ON SHEET 2).
 2. PROTECT IN PLACE.
 3. SAWCUT, REMOVE AND DISPOSE OF ASPHALT CONCRETE SURFACING, FULL DEPTH.
 4. COLD PLANE (0.10' THK) EXISTING ASPHALT CONCRETE PAVEMENT (2' WIDE MIN.)
 5. PLACE (0.10' THK) HMA, TYPE A 1/2" AGGREGATE GRADATION, PG 64-16, ASPHALT CONCRETE OVERLAY. (TACK COAT BETWEEN ALL LAYERS)
 6. CONSTRUCT 6" CURB PER CALTRANS STANDARD A87A, TYPE A1-6.
 7. CONSTRUCT 6" CURB AND GUTTER PER COUNTY STD 116 (MODIFIED).
 8. CONSTRUCT 8" CURB PER CALTRANS STANDARD A87A, TYPE A1-8.
 9. CONSTRUCT 5' CONC SIDEWALK PER SAN BERNARDINO COUNTY STD 109, TYPE C. (MOD) (4' MIN. CLEARANCE AROUND PP. WIDEN SIDEWALK IF NECESSARY.)
 10. CONSTRUCT CURB RAMP PER CALTRANS STD 2018 RSP A88A OR A88B, CASE PER PLAN.
 11. REMOVE AND DISPOSE OF EXISTING ASPHALT DIKE.
 12. PLACE ROCK TREATMENT PER DETAIL A.
 13. PLACE DETECTABLE WARNING SURFACE PER CALTRANS STANDARD PLAN RSP A88A.
 14. PLACE 6" ASPHALT CONCRETE DIKE PER CALTRANS STD A87B, TYPE A.
 15. EXCAVATE BELOW EXISTING ASPHALT PAVEMENT AS NEEDED FOR STRUCTURAL SECTION. COMPACT NATIVE MATERIAL AS SHOWN IN SPECIAL PROVISIONS.
 16. PLACE (0.55' THK) HMA, TYPE A 1/2" AGGREGATE GRADATION, PG 64-16, ASPHALT CONCRETE, OVER (0.90' THK) CLASS 2 AGGREGATE BASE.
 17. EXCAVATE BELOW EXISTING ASPHALT PAVEMENT AS NEEDED FOR STRUCTURAL SECTION.
 18. PLACE (0.50' THK) HMA, TYPE A 1/2" AGGREGATE GRADATION, PG 64-16, ASPHALT CONCRETE, OVER COMPACTED NATIVE SOIL.
 19. INSTALL METAL HAND RAILINGS PER 2012 STANDARD PLANS FOR PUBLIC WORKS CONSTRUCTION SPPWC 606-4, TYPE A PER DETAIL B.
 20. CONSTRUCT CONCRETE 8" THICK, 7' WIDE SIDEWALK/DRIVEWAY PER DETAIL C ON SHEET 11.
 21. CONSTRUCT CONCRETE CUT OFF WALL PER DETAIL B ON SHEET 11.
 22. DRILL AND BOND 0.50" DIA (NO. 4) DOWEL BAR INTO EXIST. CONC. SIDEWALK PER CALTRANS STD. P10.

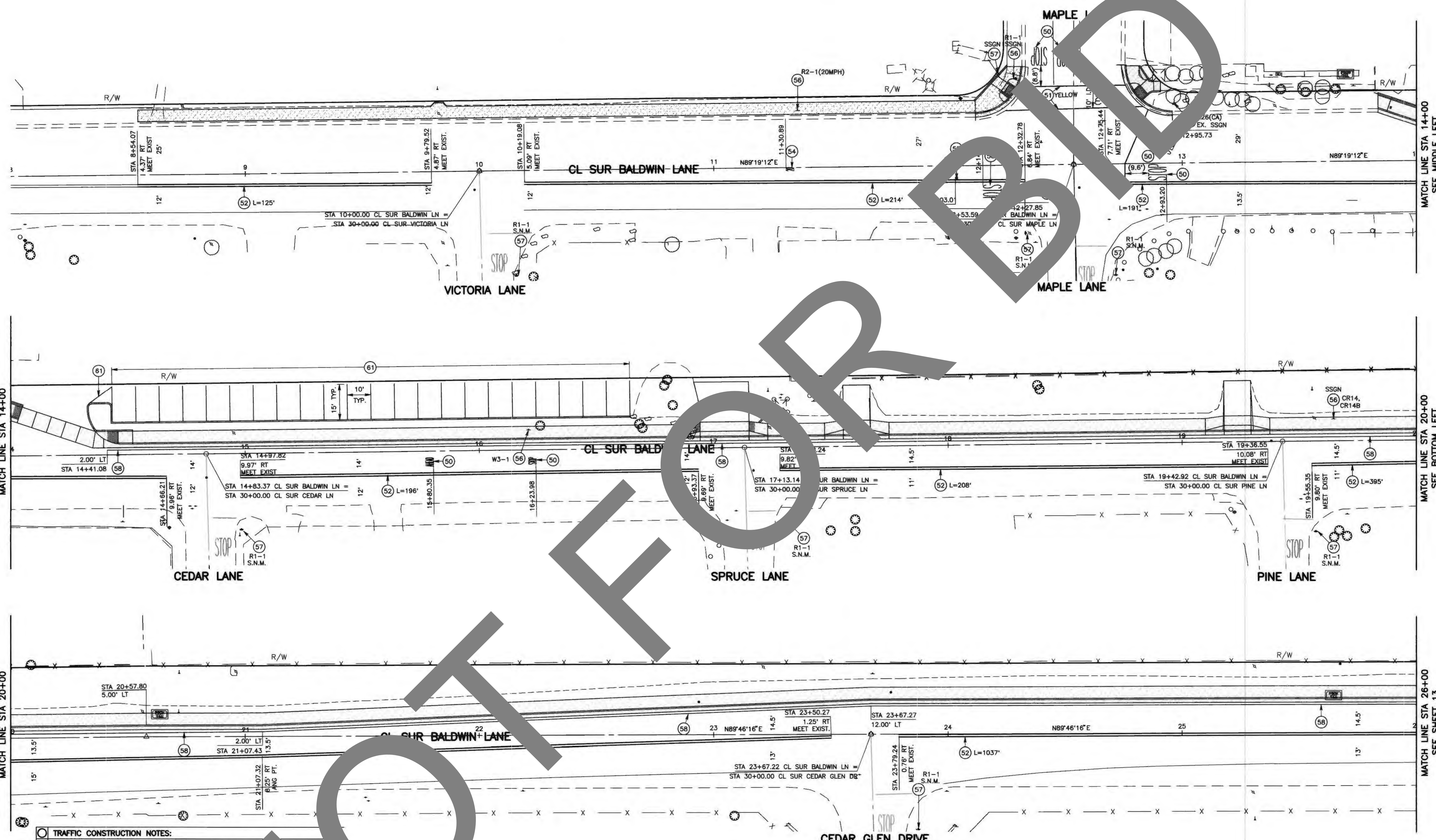


MARK	CHANGES	RESIDENT ENGINEER	DATE
	NO CHANGES		
FIELD CHANGES			

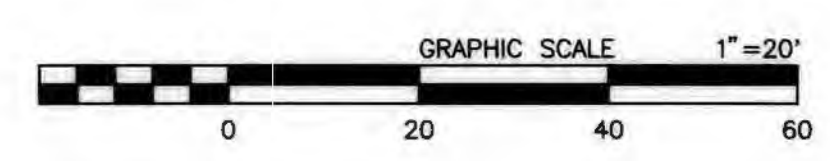


SAN BERNARDINO COUNTY DEPARTMENT OF PUBLIC WORKS			
DESIGNED BY: DJ	DRAWN BY: MDV	CHECKED BY: TB	RECOMMENDED BY: Chris Nguyen, P.E. INTERIM ENGINEERING MANAGER DATE: 3/10/22
APPROVED BY: Thomas Bustamonte, P.E. SUPERVISING ENGINEER DATE: 3/8/22			DATE: 3/10/22

BALDWIN LANE SIDEWALK CURB RETURN DETAILS BIG BEAR LAKE AREA			
J.L. REF. J.L.11757	W.D. NO. H15029	PLAN SCALE 1"=10'	SHT. NO. 11
		TOT. SHT'S. 13	



- TRAFFIC CONSTRUCTION NOTES:**
- 50 PAINT PAVEMENT MARKINGS PER THE CALTRANS 2018 STANDARD PLAN A24D.
 - 51 PAINT 12-INCH WHITE LIMIT LINE/STOP LINE PER THE CALTRANS 2018 STANDARD PLAN A24E.
 - 52 PAINT DOUBLE-6-INCH YELLOW STRIPE PER THE CALTRANS 2018 STANDARD PLAN A20A, DETAIL 22. ALL PAVEMENT MARKERS INSTALLED PER DETAIL 22 WILL BE REPAIRED PER CALTRANS 2018 STANDARD PLAN A20.
 - 54 PAINT PAVEMENT MARKINGS NUMERALS PER THE CALTRANS 2018 STANDARD PLAN A20B, DETAIL 27B.
 - 55 INSTALL BLUE RETROREFLECTIVE RECESSED MOUNTED FIRE HYDRANT PER THE CALIFORNIA MUTCD DATED 2014, FIGURES 2A-2(CA) AND 2C-2(CA).
 - 56 EXISTING SIGN(S) TO BE RESET LATERALLY AS SHOWN ON PLAN AND MUTCD DATED 2014, FIGURES 2A-2(CA) AND 2C-2(CA).
 - 57 PROTECT IN PLACE EXISTING SIGN(S), STRIPING, DELINEATION, OBJECT MARKER OR PAVEMENT MARKING(S).
 - 58 PAINT 6-INCH WIDE, WHITE EDGE LINE STRIPE PER CALTRANS 2018 STD PLAN A20B, DETAIL 27B.
 - 61 RE-PAINT 4-INCH WIDE, WHITE PARKING STRIPE AS SHOWN ON PLAN.



MARK		CHANGES	NO CHANGES	RESIDENT ENGINEER	DATE
FIELD CHANGES					

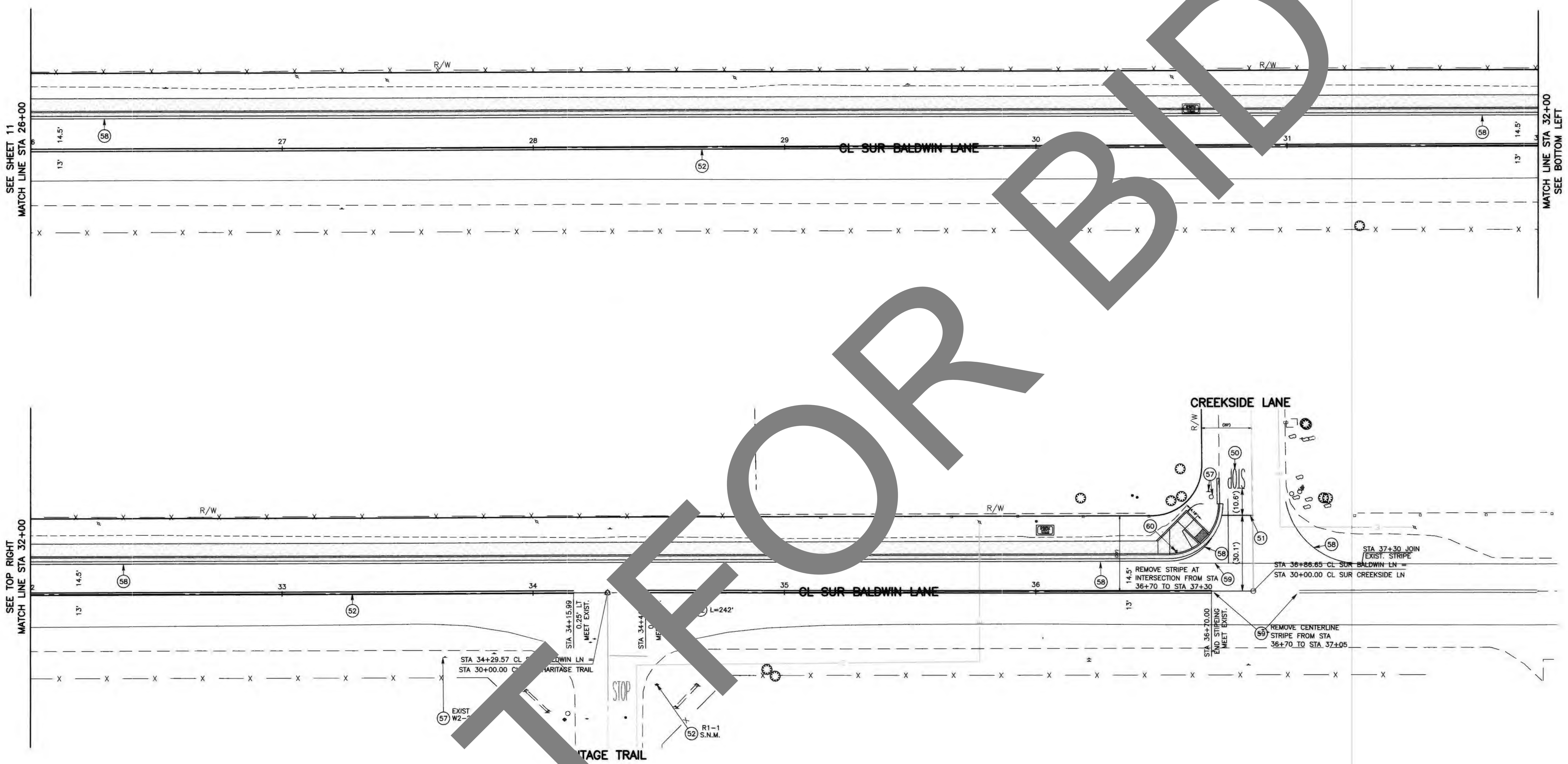
REGISTERED PROFESSIONAL ENGINEER
JEREMY DALE JOHNSON
C91246
CIVIL
STATE OF CALIFORNIA

SAN BERNARDINO COUNTY DEPARTMENT OF PUBLIC WORKS			
DESIGNED BY: DJ	DRAWN BY: DJ/MDV	CHECKED BY: J.C./L.L.	RECOMMENDED BY: [Signature] 3/10/22
APPROVED BY: [Signature] 3/10/22		APPROVED BY: [Signature] 3/10/22	
LEI LI, P.E. SUPERVISING ENGINEER		GRANT MANN, P.E. DEPUTY DIRECTOR	

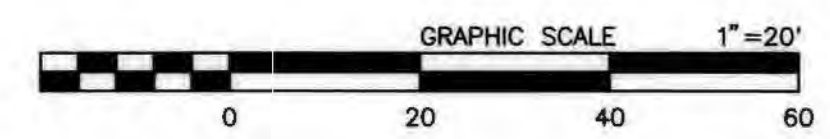
J.L. REF. J.L.11757	W.O. NO. H15029	PLAN SCALE 1"=20'	SHT. NO. 12	TOT. SHT'S. 13
------------------------	--------------------	----------------------	----------------	-------------------

MARK	REVISIONS	DATE

MARK	REVISIONS	DATE



- TRAFFIC CONSTRUCTION NOTES:**
- 50 PAINT PAVEMENT MARKINGS PER THE CALTRANS 2018 STANDARD PLAN A24D.
 - 51 PAINT 12-INCH WHITE LIMIT LINE/STOP LINE PER THE CALTRANS 2018 STANDARD PLAN A24E.
 - 52 PAINT DOUBLE-6-INCH YELLOW STRIPE PER THE CALTRANS 2018 STANDARD PLAN A24F.
 - 53 DETAIL 22. ALL PAVEMENT MARKERS INSTALLED PER DETAIL 22 WILL BE RECESSED PER CALTRANS 2018 STANDARD PLAN A20.
 - 57 PROTECT IN PLACE EXISTING SIGN(S), STRIPING, DELINEATOR, OBJECT MARKER OR PAVEMENT MARKING(S).
 - 58 PAINT 6-INCH WIDE, WHITE EDGE LINE STRIPE PER CALTRANS 2018 STD PLAN A20B, DETAIL 27B.
 - 59 REMOVE TRAFFIC STRIPE AS SHOWN ON PLAN.
 - 60 INSTALL CA TYPE L-1(CA)(OM2-2V) OBJECT MARKER PER THE CALTRANS 2014, FIGURE 2C-13(CA).



FIELD CHANGES			SAN BERNARDINO COUNTY DEPARTMENT OF PUBLIC WORKS				BALDWIN LANE SIDEWALK TRAFFIC SIGNING AND STRIPING PLAN BIG BEAR LAKE AREA STA 26+00 TO STA 36+86.65				
MARK	CHANGES		DESIGNED BY: DJ	DRAWN BY: DJ/MDV	CHECKED BY: J.C./L.L.	RECOMMENDED BY: [Signature]	J.L. REF. J.L.11757	W.O. NO. H15029	PLAN SCALE 1"=20'	SHT. NO. 13	TOT. SHT'S. 13
NO CHANGES		RESIDENT ENGINEER		DATE		APPROVED BY: [Signature]		DATE			