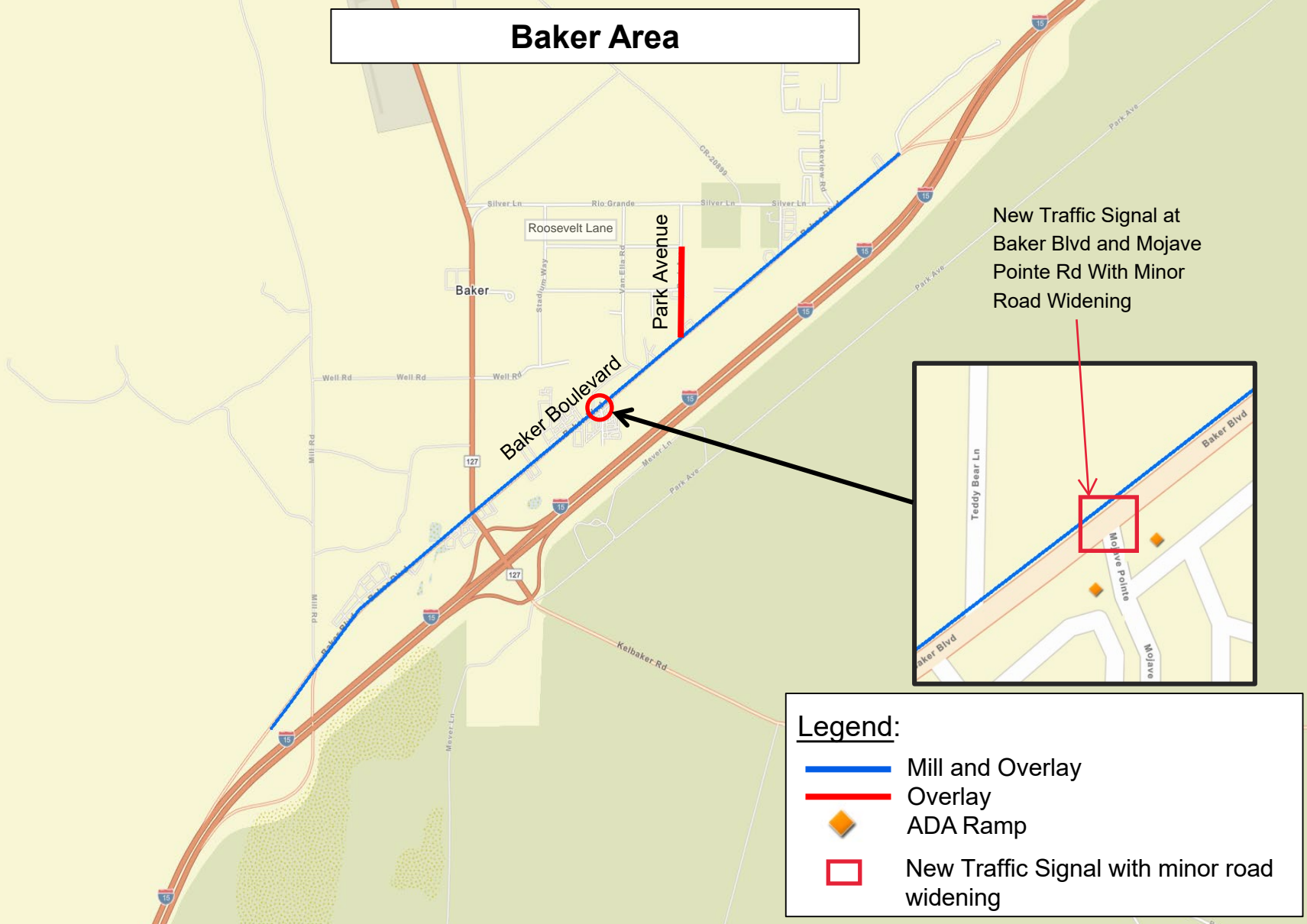








# Baker Area



New Traffic Signal at Baker Blvd and Mojave Pointe Rd With Minor Road Widening

**Legend:**

-  Mill and Overlay
-  Overlay
-  ADA Ramp
-  New Traffic Signal with minor road widening

SAN BERNARDINO COUNTY  
DEPARTMENT OF PUBLIC WORKS  
Supervisorial District 1  
Yard 12  
W.O. # TX1814



**LOCATION MAP**  
**BAKER BOULEVARD AND PARK AVENUE**  
Various Roads/Locations  
Mill and Overlay, ADA Ramp Updates and Traffic Signal Installation