

PAVEMENT TREATMENT MAP

Full Depth Reconstruction

Crafton Ave - Fifth Ave to 500' south of Colton Ave
 Crafton Ave - 500' north of Colton Ave to Nice Ave

Mill and Overlay

Crafton Ave - Nice Ave to Anzio Ave
 Crafton Ave - 500' south to 500' north of Colton Ave
 Nice Ave - 0.03 miles east Jasper Ave to Amethyst Ave

Overlay only

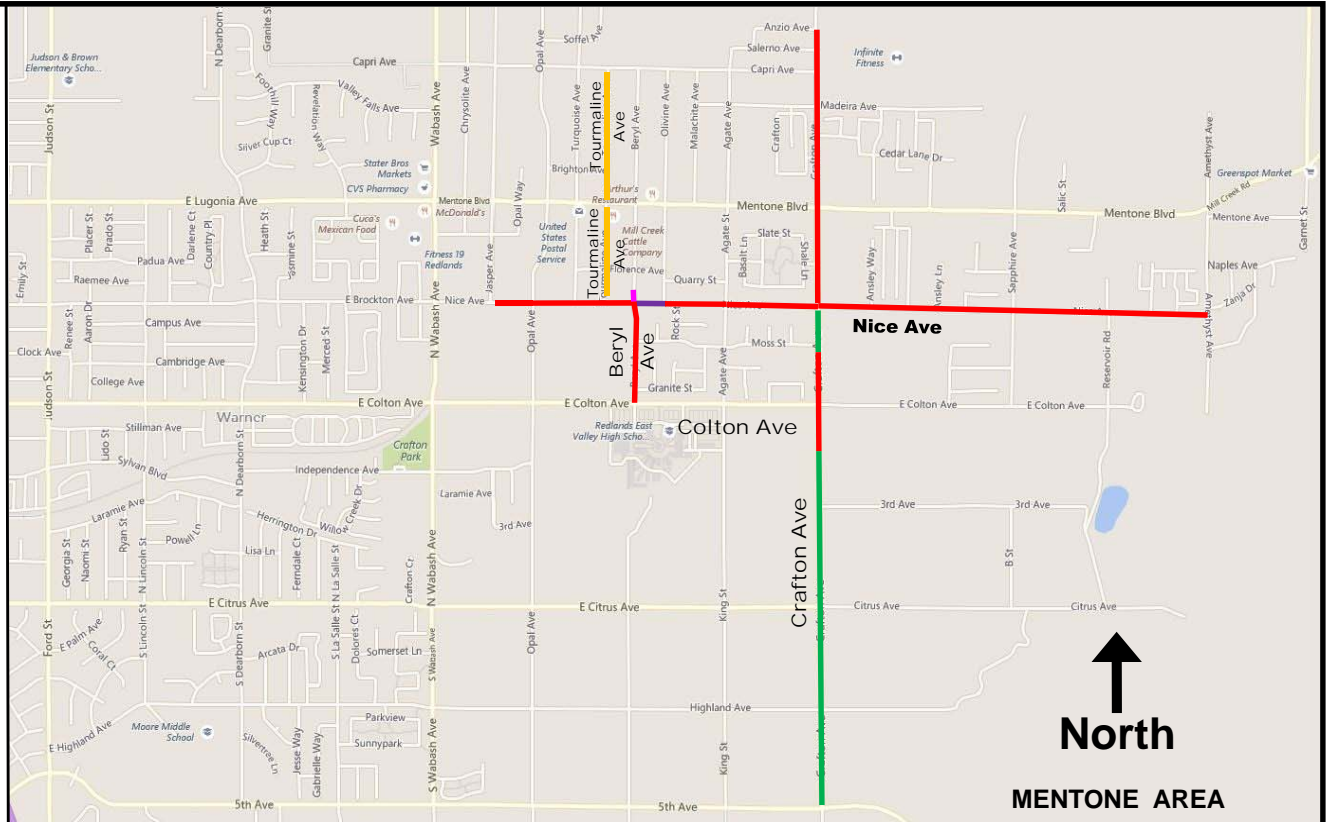
Tourmaline Ave – 0.24 mile south end of Mentone Blvd to Mentone Blvd (SH38)
 Tourmaline Ave - Mentone Blvd (SH38) to Capri Ave

Pavement Replacement and Widening

Nice Ave - Beryl Ave to Olivine Ave

Reprofile and Reconstruct

Beryl Ave - Nice Ave to approx. 150 ft north



Work Order No. H14860
 Lat.: 34.0628 Long.: -117.1215

COUNTY OF SAN BERNARDINO DEPARTMENT OF PUBLIC WORKS

CRAFTON AVE AND OTHERS

Beryl Ave - Colton Ave to approx. 150 ft north of Nice Ave
 Crafton Ave - Fifth Ave to Anzio Ave
 Nice Ave - 0.03 miles east of Jasper Ave to Amethyst St.
 Tourmaline Ave - 0.24 miles south of Mentone Blvd (SH38) to Capri Ave