



**SAN BERNARDINO COUNTY
SOLID WASTE MANAGEMENT DIVISION**
222 West Hospitality Lane, 2nd Floor
San Bernardino, CA 92415-0017
Fax: 909-386-8900

ADDENDUM NO. 4

**TO THE PLANS AND BID DOCUMENTS FOR THE
PHASE 1B STAGES 4 AND 5 LINER CONSTRUCTION PROJECT
at the VICTORVILLE SANITARY LANDFILL
in Victorville, California**

March 30, 2026

BID OPEN: 10:00 A.M. April 2, 2026

The following changes and/or additions shall be made to the Plans and Bid Documents for the Phase 1B Stages 4 and 5 Liner Construction Project at the Victorville Sanitary Landfill. All other requirements of the Plans and Bid Documents shall remain the same.

The following changes shall be made part of the Contract Documents, and the Bidder should acknowledge receipt thereof on the Bid Proposal.

I. SPECIAL PROVISIONS

1. **BID SCHEDULE**, delete and replace in its entirety Bid Schedule Pages 22-1A thru 22-3A with the Bid Schedule Pages 22-1B thru 22-3B included in this Addendum No. 4 as Attachment 1. Bids must be submitted on these sheets or will be deemed non-responsive.
2. Section 2C – Earthwork, Section 4 – Measurement and Payment, add Item 4.13 with the following:

“4.13 ANCHOR TRENCH EXCAVATION AND BACKFILL (PER DETAILS 1/C17, 2/C17, 5/C17, AND 6/C17) – ITEM NO. 70”

The contract unit price paid per lineal foot for Anchor Trench Excavation and Backfill shall include full compensation for furnishing all labor, materials, tools, equipment, and incidentals and for doing all work involved in Anchor Trench Excavation and Backfill for the northerly, easterly, and southerly typical geosynthetic termination anchor trenches including all excavation, grading, 3”

minus backfill, compaction, and other appurtenances as shown on the plans, as specified in the Standard Specifications and these Special Provisions, and as directed by the Engineer. Intermediate Anchor Trench on the westerly Portion shall be paid for separately and per Bid Item 35.

Final pay quantities shall be determined by computing the actual lineal footage of Anchor Trench Excavation and Backfill placed to the limits indicated on the Plans. Geosynthetics placed in the Anchor Trench to the Pay Limit will be included in respective geosynthetic material Bid Item(s). The proposed "notch" at the northerly, easterly, and southerly top bench/road terminations shall be included in the Excavation to Stockpile bid items for subgrade establishment/preparation and shall be considered incidental thereto. Anchor Trench Excavation and Backfill placed beyond those limits will not be compensated unless previously authorized by the Engineer."

3. Section 2C – Earthwork, Section 4 – Measurement and Payment, delete and replace Item 4.7 with the following:

“4.7 Screening – Item No. 14

The contract unit price paid per cubic yard of Screening shall include full compensation for furnishing all labor, tools, equipment, and incidentals and for doing all work involved in Screening, including processing, screening, and stockpiling of oversized material to the stockpile 2 area, as shown on the Plans, as specified in the Standard Specifications and these Technical Specifications, and as directed by the Engineer.

Final pay quantities will be based on the in-place compacted volumes of screened/engineered fill materials generated for the project including Bid Item 16 Compacted/Screened 1-inch Minus Material on Floor, Bid Item 17 Veneer Fill Placement – Slopes, Bid Item 26 PSC Base, Bid Item and 39 thru 41 PSC Various Locations, as determined by pre- and post- item installation as-built survey (square foot * depth) or volumetric analysis (cubic yard) per respective bid item. Screening completed beyond the tolerances indicated in the Technical Specifications, or limits indicated on the Plans will not be compensated unless previously approved by the Engineer."

4. Section 2C – Earthwork, Subsection 2.8 – Veneer Fill Material, Paragraph 3, delete and replace with the following:

"These provisions, for allowing incorporation of rock or rock fragments within the fill shall not relieve the Contractor of the responsibility to prepare the final subgrade surface for geosynthetic installation in accordance with other provisions of these Technical Specifications. Approved Materials include screened on-site native material from the Unclassified Excavation or if imported the material shall be classified as SC or SC-SM with a plasticity index of 3 (or greater) or an approved equivalent. Approved import material shall have enough cohesion to prevent dislodging/desiccation during geosynthetics placement."

II. QUESTIONS

1. Will there be any clause for fuel and resin?

A1. *No clause for diesel fuel or HDPE and Resin materials will be added to the bid documents. Bidders are advised that all costs associated with fuel and materials, including potential price variations, shall be included in the unit price and lump sum prices submitted with the bid. No payment adjustments will be made to such cost changes during construction.*

2. Paragraph 2.7 of the Technical Specification refers to relocating an existing boulder stockpile to stockpile 2. What is the quantity of this boulder stockpile and how is this paid for?

A2. *There is no existing rock stockpile expected to be moved within this project. It has since been removed by landfill operations and most recently County Flood Control District.*

3. Paragraph 2.8 of the Earthwork Technical Specification titled Veneer Fill Material (Page 2C-5) has the following requirement: The Veneer fill material shall be classified as SC or SC-SM with a PI of 3 or greater. If the screened material does not yield a material that meets these requirements, how are we to proceed?

A3. *Please refer to Special Provisions Revision No. 4 for clarification.*

4. We are unable to locate the specification for the LCRS Gravel? Where do we obtain this material?

A4. *LCRS Gravel is anticipated to be an imported material due to the specifications listed in Section 2D – LCRS, Lysimeter, and LFG Collection Systems Subsection 2.1 – Gravel of the Technical Specifications.*

5. We have noted that there is no pay item for the Anchor Trench. Would it be possible to add this as a line item?

A5. *Please refer to Special Provisions Revision No. 2 for added Measurement and Payment Item and Special Provisions Revision No. 1 for updated Bid Schedule reissued with this line item included in this Addendum No. 4.*

6. The Blasting quantity indicated in the bid documents appears to be relatively high. Please clarify the basis used to develop this quantity and provide any supporting calculations or assumptions.

A6. *Based on the rippability investigation and air-track rotary drilling, an elevation/planar surface defining the blasting limit was developed. This surface was compared with the proposed subgrade elevations which established the blasting volume, which was ultimately increased to account for uncertainties.*

7. Are there any Phase 2 Area biological concerns as it relates to the Probe work?

A7. SWMD is currently working with the regulatory agencies to obtain the final permits for the Phase 2 Area. Until permits are finalized, contractor should refer to the Plans and Technical Specifications to ensure proper buffers and protection is maintained for any nearby waters, habitat, wildlife, and other related environmentally protected resources.

8. Section 2.2.8 lists a total of 4-tests (2-dry and 2-soaked tests). Section 3.6.1 has a frequency of 1 per 200k sq ft or 1 per interface, whichever results in greater number of tests. If the engineer wants to follow section 3.6.1 and just using the GCL quantity, there could be a total of 28-sets of tests (instead of 4).

A8. Perform Interface Shear Testing per Section 2E – Geomembrane Subsection 2.2.8 – Interface Shear Testing.

9. Page 11, Section XVII in the Instruction to Bidders references a schedule to be submitted by the Contractor. Is this schedule to be submitted with the bid or once the job is awarded?

A9. Schedule will be submitted by awarded Bidder prior to the start of construction.

10. Due to the current volatile market in regards to Fuel, HDPE materials, and Resin pricing. Will the county entertain any compensation once project is underway if there are substantial increase in these materials, given the contractors have no control over?

A10. Please refer to answer provided to Question No. 1.

11. Based on discussions during the previous job walk, there was a mention of a new waste fill plan. We understand that current landfill waste operations have shifted in certain areas, which may impact proposed haul routes & construction logistics. Could the county confirm that the haul routes indicated on the plans will not change however if so would it be possible to receive the updated waste fill plan to plan our haul routes accordingly.

A11. Please see Attachment 2 included in this Addendum No. 4 showing the intended haul route with the anticipated fill plan for reference only. Refer to Sheet C9 of the Plans for all other construction notes and details.

12. Based on the specifications, it is indicated that the last 20'-25' from design will be the harder caliche material that will require blasting however the geotechnical report states 40' from original grade. Which one supersedes the other?

A12. The harder caliche layer is expected in the final 20-25 feet of excavation. The geotechnical rippability report indicates blasting may be needed at about 40 feet below original grade. With excavation depths ranging from 0 to 65 feet, blasting at \pm 40 feet below original grade corresponds to the final 20 to 25 feet above subgrade where caliche is encountered.

13. Please confirm the required limits for the Builder's Risk coverage detailed in the Standard Contract, Section 5.3.2, Subsection E.

A13. The Course of Construction/Installation (Builder's Risk) Property Insurance shall be based on the Contractor's proposed bid amount.

If you have any questions, please contact Joshua LeRoy at (909) 386-8629 or you may contact me at (909) 386-9017.



Johnny Gayman, P.E.
Engineering Manager

03/30/2026

Date

ATTACHMENT NO. 1

(BID SCHEDULE, Pages 22-1B thru 22-3B)

**VICTORVILLE SANITARY LANDFILL
PHASE 1B STAGES 4 AND 5 LINER CONSTRUCTION PROJECT**

Const Note	Item No.	Description	QTY	Unit	Unit Price	Item Total
PHASE 1B STAGE 4 AND 5 SUPPORT BID ITEMS						
-	1	Mobilization / Demobilization	1.0	LS		
-	2	Construction Support Tasks	1.0	LS		
-	3	Stormwater Compliance Tasks	1.0	LS		
-	4	Construction Survey	1.0	LS		
-	5	Waste Removal and Relocation	75,000	DLR	\$1.00	\$75,000.00
-	6	Geoelectric Leak Location Survey	1.0	LS		
PROJECT SUPPORT BID ITEMS SUBTOTAL:						
PHASE 1B STAGE 4 AND 5 CONSTRUCTION BID ITEMS						
Const Note	Item No.	Description	QTY	Unit	Unit Price	Item Total
2, 4	7	Clearing, Grubbing, and Demolition (29 acres)	1.0	LS		
-	8	Miscellaneous Site Work	1.0	LS		
5	9	Unclassified Excavation/Transport to Stockpile 1 - Liner Cell Area	787,500	CY		
5	10	Unclassified Excavation/Transport to Stockpile 2 - Liner Cell Area	335,000	CY		
5	11	Unclassified Excavation/Transport to Stockpile 2 - Entrance Road Area	2,000	CY		
5	12	Blasting	675,000	CY		
5	13	Unclassified Excavation to Fill - Liner Cell Area	105,000	CY		
5	14	Screening	82,000	CY		
5	15	Daily Cover to Active Landfill Area	70,000	CY		
9, 11, 13	16	Compacted/Screened 1-inch Minus Material on Floor	665,000	SF		
9	17	Veneer Fill Placement - Slopes	550,000	SF		
9	18	Subgrade Surface Preparation for Geosynthetics - Slope, Bench, and Access Roads	615,000	SF		
14	19	Lysimeter Liner Section (Per Detail 3/C15)	12,500	SF		
14	20	60-mil HDPE Encapsulation Geomembrane (Textured Both Sides) - Base	650,000	SF		
14	21	Geosynthetic Clay Liner (GCL) - Base	650,000	SF		
14	22	60-mil HDPE Geomembrane (Textured Both Sides) - Base	650,000	SF		
14	23	Geotextile Fabric 12 oz/sy - Base	650,000	SF		
14	24	LCRS Drainage Layer - Gravel	670,000	SF		
14	25	Geotextile Fabric 8 oz/sy - Base	650,000	SF		

**VICTORVILLE SANITARY LANDFILL
PHASE 1B STAGES 4 AND 5 LINER CONSTRUCTION PROJECT**

Const Note	Item No.	Description	QTY	Unit	Unit Price	Item Total
14	26	Protective Soil Cover - Base	650,000	SF		
29	27	Wrapped Gravel Infiltration Corridor (Per Detail 4/C16)	225	LF		
15, 20	28	60-mil HDPE Encapsulation Geomembrane (Textured Both Sides) - Slope, Bench, and Access Roads	700,000	SF		
15, 20	29	Geosynthetic Clay Liner (GCL) - Slope, Bench, and Access Roads	700,000	SF		
15, 20	30	60-mil HDPE Geomembrane (Textured Both Sides) - Slope, Bench, and Access Roads	700,000	SF		
15, 20	31	Geotextile Fabric 16 oz/sy - Slope, Bench, and Access Roads	700,000	SF		
31	32	Drainage Geocomposite - Northwesterly Construction Bench (Per Detail 5/C15)	13,000	SF		
16	33	Base to Slope Liner Transition	3,800	LF		
21, 22	34	Westerly Bench Liner Join (Per Detail 3/C17)	5,000	LF		
23	35	Intermediate Bench/Road Anchor Trench (Per Detail 3/C17)	1,750	LF		
34	36	Slope Liner Join (Per Detail 4/C17)	290	LF		
33	37	Base Liner Join - 1B Stage 3 to 1B Stages 4/5 (Per Detail 9/C16)	20	LF		
24	38	Protective Plastic Cover and HDPE Geotextile Ballast (Per Detail 2/C15)	530,000	SF		
6, 15, 20	39	Protective Soil Cover - Slope, Bench, and Cell Access Road	170,000	SF		
32, 38	40	Protective Soil Cover - Easterly Access Road (Per Detail 1/C17)	90,000	SF		
6	41	Protective Soil Cover - Gap Fill Area	4,000	CY		
7	42	Native Unclassified Fill Above PSC - Westerly Bench and Gap Fill Area	13,250	CY		
17	43	Liner Cell Access Road with Geotextile Underlay (Per Detail 7/C15)	20,000	SF		
18	44	Road Edge K-Rail Concrete Barrier	195	LF		
19	45	LCRS Header Pipe (Per Details 3/C15 and 7/C16)	2,100	LF		
25	46	LCRS Lateral Pipe (Per Detail 8/C16)	4,100	LF		
26	47	LCRS Pipe Junctions (Per Detail 1/C16)	12	EA		
27	48	6" Solid HDPE LCRS Riser Pipe (Per Detail 2/C16)	1,950	LF		
28	49	6" Slotted HDPE LCRS Access Road Collector (Per Detail 7/C15)	400	LF		
53	50	LCRS Test Port Riser (Per Detail 10/C16)	315	LF		
30	51	LCRS/LFG Bench Crossing (Per Detail 6/C15)	4	EA		
35, 51	52	LCRS/LFG Riser Termination Support (Per Detail 6/C16)	22	EA		
43, 54	53	Easterly and Southeasterly Perimeter Access Road Pavement Section (Per Details 1/C17 and 5/C17)	90,500	SF		
44	54	Northerly Perimeter Access Road Pavement Section (Per Detail 6/C17)	12,000	SF		

**VICTORVILLE SANITARY LANDFILL
PHASE 1B STAGES 4 AND 5 LINER CONSTRUCTION PROJECT**

Const Note	Item No.	Description	QTY	Unit	Unit Price	Item Total
51	55	Class I Flexible Post Delineator (Per Caltrans Std. Plan A73C)	100	EA		
46	56	AC Dike (Per San Bernardino County Std. Plan 117)	2,750	LF		
47	57	AC Speed Bump (Per Detail 1/C13)	100	LF		
48	58	Roadside Inlet Structure (Per Detail 4/C18)	1.0	LS		
36, 52	59	24" CHDPE Below Grade Storm Drain	40	LF		
35	60	60" Diameter CHDPE Below Grade Storm Drain - Line A (Per Detail 1/C18)	440	LF		
38	61	Line A Inlet Structure (Per Detail 1/C12)	1.0	LS		
39	62	Line A Outlet Structure (Per Detail 2/C12)	1.0	LS		
40	63	Class III Rip Rap per SSPWC Sec. 200-1.6	6,000	SF		
41	64	Class V Rip Rap per SSPWC Sec. 200-1.6	3,550	SF		
EC1, EC2	65	Erosion Control / Final Stabilization	1.0	LS		
55	66	Diversion Berm and Geomembrane Flap (Per Detail 3/C13)	525	LF		
56	67	Temporary Diversion Berm and Geomembrane Flap (Per Detail 2/C13)	780	LF		
-	68	Abandon Existing Gas Probe (Per Detail 1/5) (Deletable)	3	EA		
-	69	Install New Perimeter Gas Probe (Per Detail 1/4) (Deletable)	1900	VF		
-	70	Anchor Trench Excavation and Backfill (Per Details 1/C17, 2/C17, 5/C17, and 6/C17)	2850	LF		

CONSTRUCTION BID ITEMS SUBTOTAL:

PROJECT SUPPORT BID ITEMS (1-6) SUBTOTAL:

CONSTRUCTION BID ITEMS (7-70) SUBTOTAL:

TOTAL PROJECT BID (ITEMS 1-70) =

The project will be bid on a UNIT PRICE basis and quantities are to be VERIFIED by the Bidders. Actual quantities shall be measured for final payment, or as approved by the Engineer.

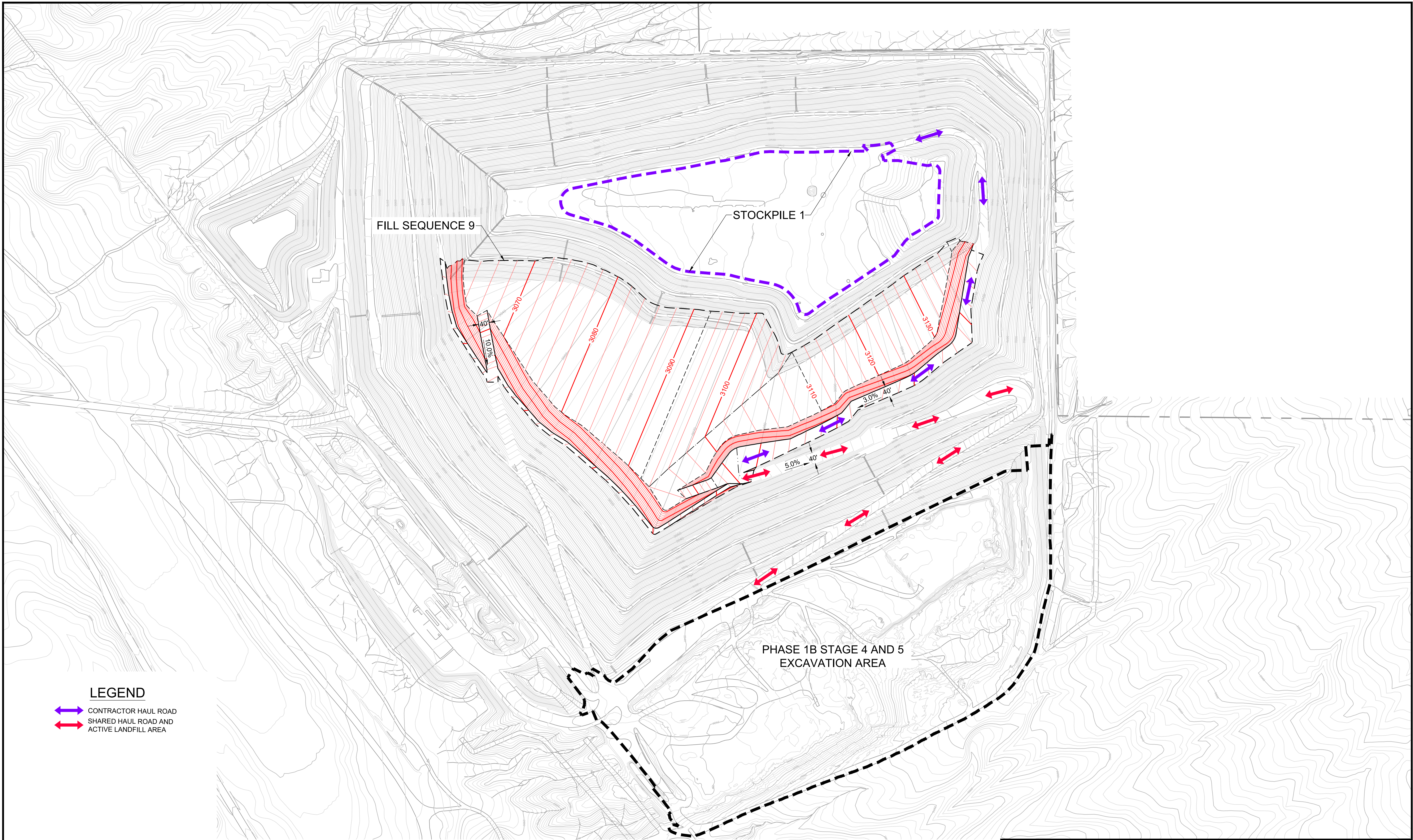
SWMD reserves the right to delete any specific item on the bid schedule in its entirety. Should SWMD elect not to proceed with a specified item of work, it will be deleted from the contract.

The Bid Schedule shown above does not constitute agreed-upon costs for the items described. The purpose of this cost breakdown is to provide SWMD with cost allocations for comparison and budgeting purposes only. Final cost allocations for each individual item for the project's schedule of values and progress payments will be established by the Construction Manager in negotiation with the Contractor.

THE AWARD OF THIS CONTRACT WILL BE BASED ON THE LOWEST RESPONSIBLE BID TOTAL.

ATTACHMENT NO. 2

(Fill Plan w/ Intended Haul Route)



FILL SEQUENCE 9

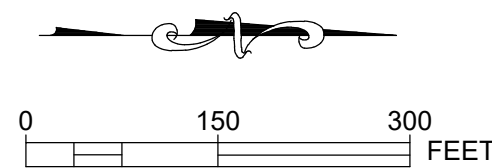
STOCKPILE 1

PHASE 1B STAGE 4 AND 5
EXCAVATION AREA

LEGEND

- ↔ CONTRACTOR HAUL ROAD
- ↔ SHARED HAUL ROAD AND ACTIVE LANDFILL AREA

DRAFT
NOT FOR CONSTRUCTION



DATE OF TOPOGRAPHY : JANUARY 9, 2026

SAN BERNARDINO COUNTY DEPARTMENT OF PUBLIC WORKS				VICTORVILLE SANITARY LANDFILL				
DRAWN BY	DESIGNED BY	PROJ. ENGR.	RECOMMENDED / APPROVED BY					
AV	AV	JL						
SUBMITTED BY			DEPUTY DIRECTOR			DATE		
CHIEF OF ENGINEERING			DIRECTOR OF PUBLIC WORKS			DATE		
J.L. REF.	W.O. NO.	SCALE	SHT. NO.	TOT. SHTS.				
		AS SHOWN	1	1				