



Regional Parks

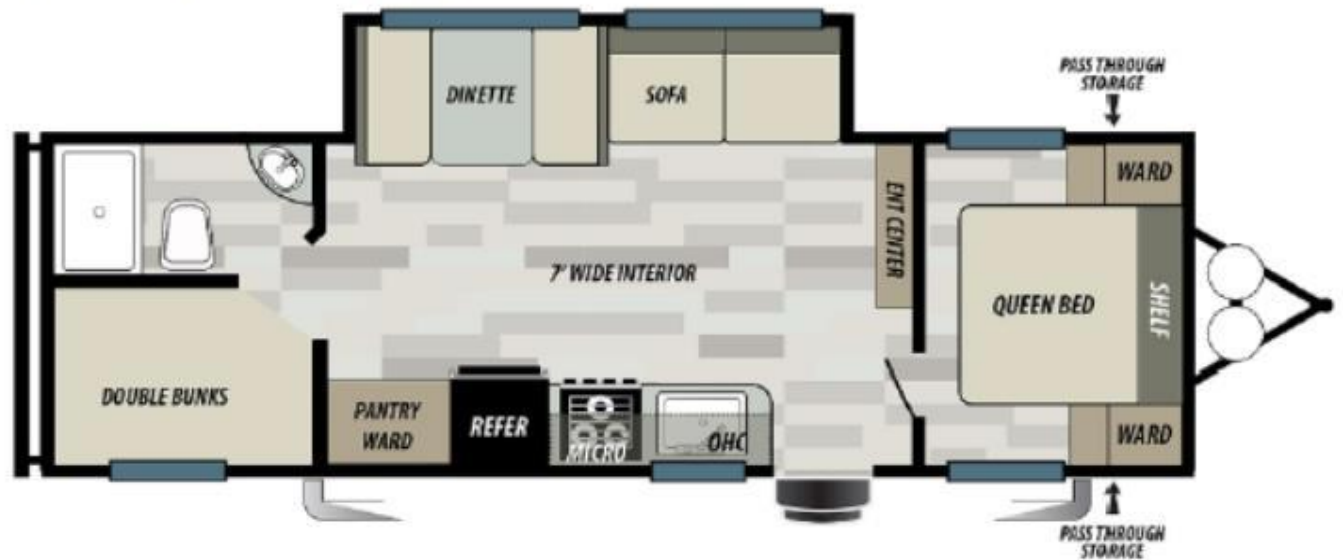
Regional Parks Fee Hearing

Beahta Davis
Director
May 18, 2021

- Recreation Vehicle Rental (Calico, Mojave Narrows, Prado, and Yucaipa Regional Parks)
 - Reuse of vehicles that were utilized during the COVID-19 pandemic
 - Create an opportunity for park patrons without a Recreational Vehicle (RV) the experience of RV Camping
- New Fees
 - Deposit \$300
 - 22 foot RV \$140/night
 - 28 foot RV \$150/night
 - 30 foot RV \$160/night

267SS FLOORPLAN

EVO Factory Select Travel Trailers



Exterior Length: 31' 0"

On February 9, 2021, the Board approved the Operations and Management Agreement No. 21-117 with Lake Gregory Community Recreation Company, operator for Lake Gregory Regional Park.

- 19 New Fees
 - These fees include Value, Deluxe, and VIP packages which recognize that many users are returning customers utilizing Lake Gregory's unique amenities.
 - Filming Fees
 - Fishing Derby Fee
 - San Moritz Lodge Facility Rental Fee (Commercial Usage)
- Deletion of 8 fees
 - These fees covered services that are no longer provided or costs are recovered through a separate fee.

- Revision of 15 fees
 - Many of these changes align Lake Gregory's fees with other parks within our Regional Park System
 - Water Launch Fees
 - San Moritz Lodge Facility Rental Fees
 - Outdoor-Swim Area Fees
 - Parking fee
 - Special Event Parking Fee
 - Playfield Fee
 - Fishing Access Fee



Regional Parks

Questions?