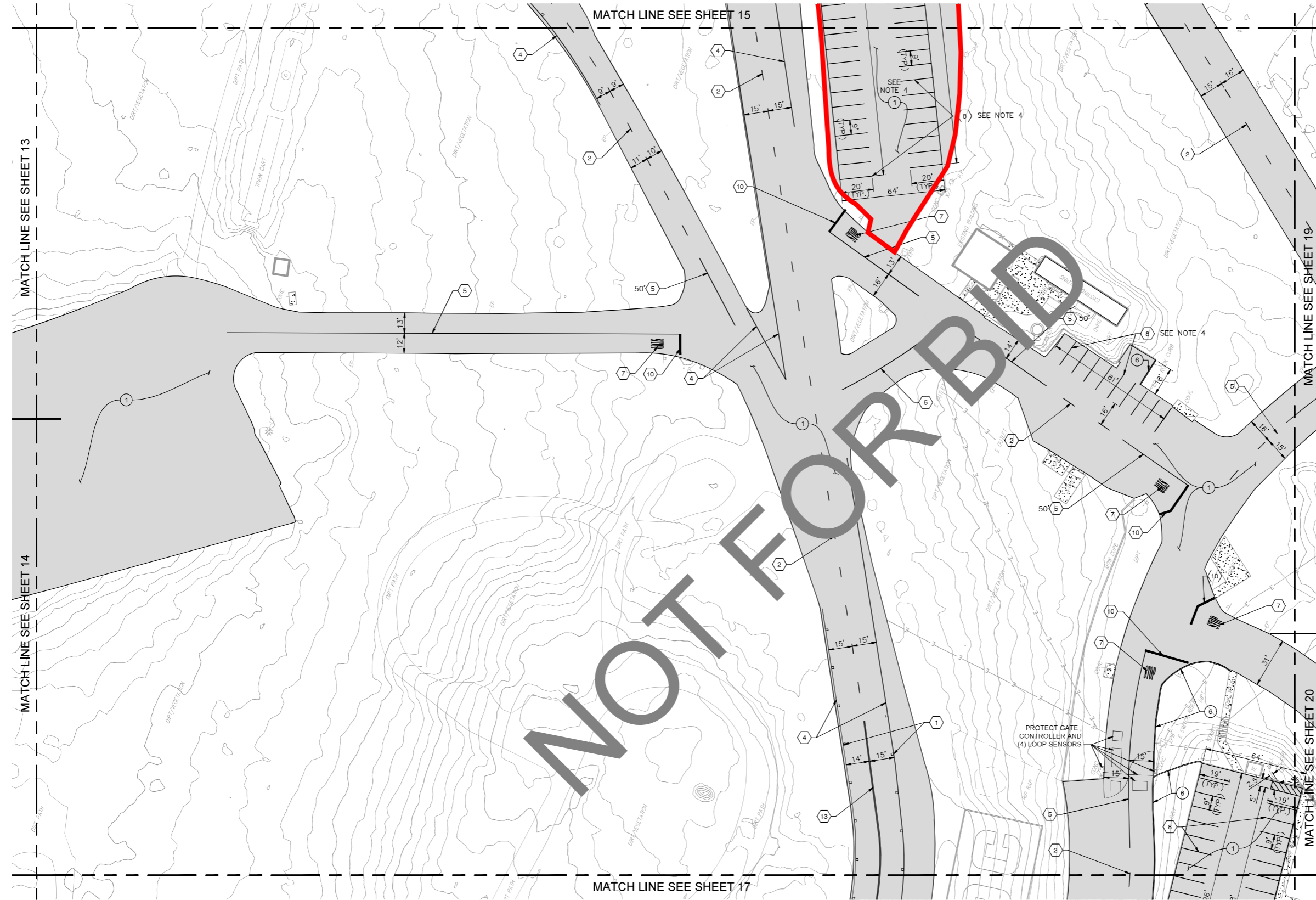
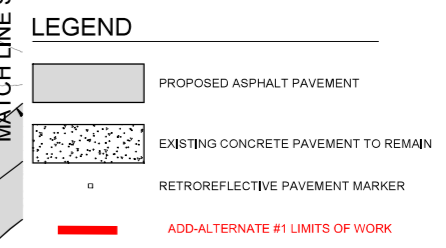


NOT FOR BID

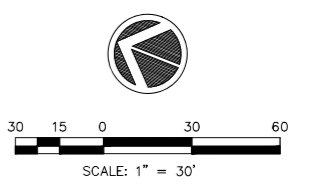


- ### SIGNING AND STRIPING NOTES
- 1 INSTALL TWO-WAY YELLOW RETROREFLECTIVE PAVEMENT MARKER PER CALTRANS STD. PLAN A20B, DETAIL 25A ON SHEET 32.
 - 2 PAINT YELLOW CENTERLINE PER CALTRANS STD. PLAN A20A, DETAIL 1 ON SHEET 32.
 - 4 PAINT WHITE EDGELINES PER CALTRANS STD. PLAN A20B, DETAIL 27B ON SHEET 32.
 - 5 PAINT 6-INCH WIDE SOLID YELLOW LINE.
 - 7 PAINT 'STOP' PAVEMENT MARKING PER CALTRANS STD. PLAN A24D ON SHEET 32.
 - 8 PAINT 4-INCH WIDE SOLID WHITE LINE.
 - 10 PAINT 12-INCH WIDE SOLID WHITE LIMIT LINE PER CALTRANS STD. PLAN A24G ON SHEET 32.
 - 13 PAINT DOUBLE YELLOW CENTERLINE PER CALTRANS STD. PLAN A20A, DETAIL 21 ON SHEET 32.

- ### PAVING CONSTRUCTION NOTES
- 1 CONSTRUCT 4" ASPHALT CONCRETE PAVEMENT OVER 5" AGGREGATE BASE OVER COMPACTED SUBGRADE PER RECOMMENDATIONS OF THE GEOTECHNICAL REPORT. CONSTRUCT EDGE OF PAVEMENT PER APPLICABLE CONDITION. SEE DETAIL 2 ON SHEET 33.
 - 6 CONSTRUCT 6" PCC CURB PER DETAIL A87A, TYPE 'A1' ON SHEET. 33.



- ### SHEET NOTES
1. FOR GENERAL NOTES, LEGEND, AND ABBREVIATIONS, SEE SHEET 1.
 2. FOR CONSTRUCTION DETAILS, SEE SHEETS 32 AND 33.
 3. FOR GRADING PLANS, SEE SHEETS 22 TO 31.
 4. CONTRACTOR TO INCLUDE CONSTRUCTION OF THIS PARKING LOT AS AN ADD ALTERNATE IN THE BID DOCUMENTS.
 5. FOR SITE LIGHTING IMPROVEMENTS, SEE ELECTRICAL PLANS - SHEETS 34 TO 39.



Underground Service Alert

 Call: TOLL FREE
 1-800-227-2600
 TWO WORKING DAYS BEFORE YOU DIG

BENCHMARK
 NATIONAL GEODETIC SURVEY BENCHMARK
 DESIGNATION: RF 51
 POINT: EV9108
 DATUM: NAVD 83
 ELEVATION: 1956.43 FEET
 DESCRIPTION: 0.5 KM SOUTHWEST ALONG PALM AVENUE FROM ITS JUNCTION WITH INTERSTATE HIGHWAY 215 AND HIGHWAY 206, THENCE 0.9 KM SOUTHWESTERLY ALONG INSTITUTION ROAD 23.5 M (77.1 FT) N OF THE CENTERLINE OF THE ROAD 62 M (187 FT) E OF THE CENTER OF A TRACK ROAD 18.9 M (60.4 FT) W OF A UTILITY POLE NUMBER 1891621E 0.5 M (1.6 FT) S OF A WITNESS POST 0.3 M (1.0 FT) ABOVE THE ROAD 0.2 M (0.7 FT) BELOW THE GROUND SURFACE.

PREPARED BY:

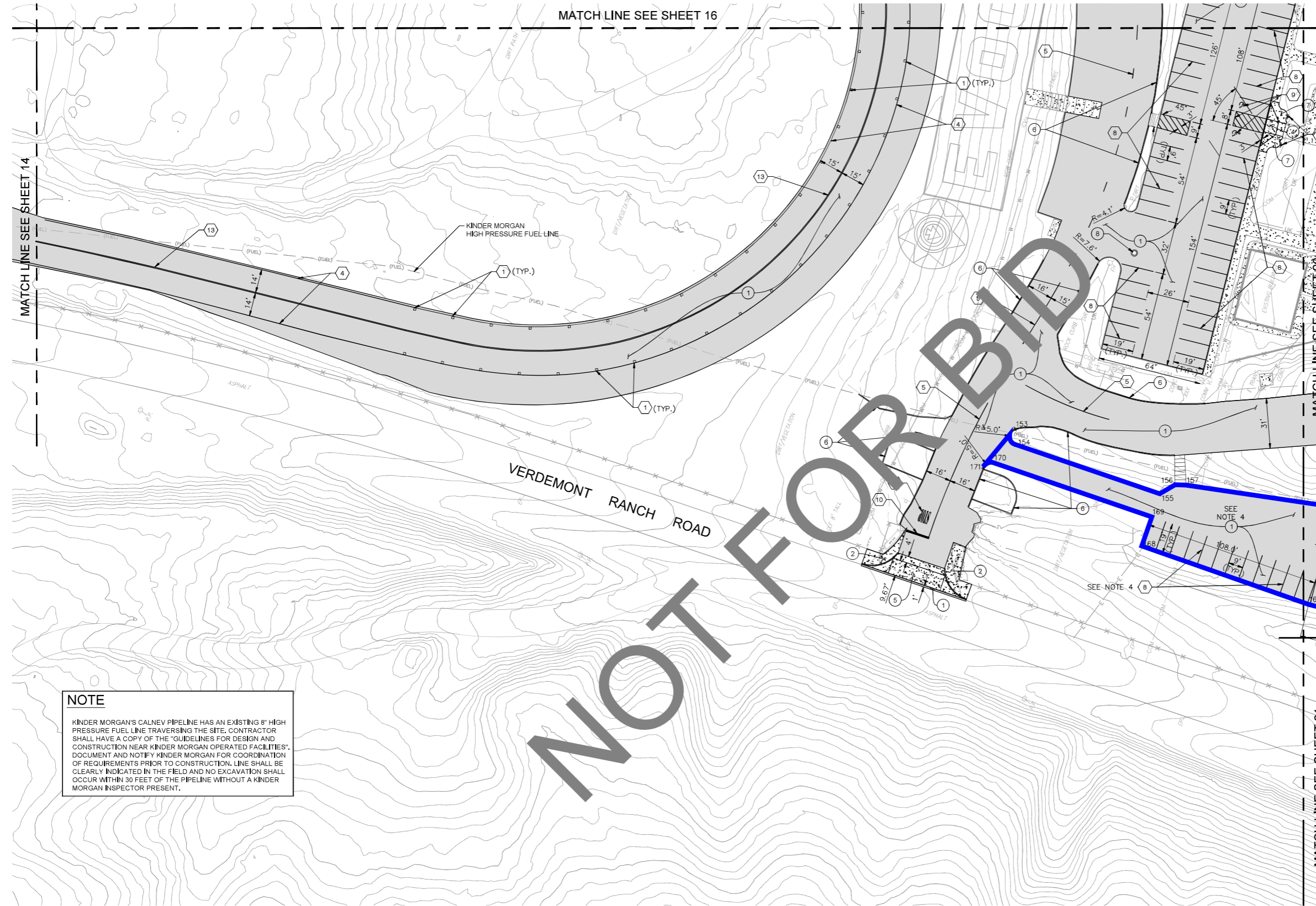
 901 VIA PIEMONTE SUITE 400 CHATWORTH, CA 91764 PROJECT # 22006394.00
 PH 909.477.6915 FAX 909.477.6916 www.imegcorp.com
 JOHN M. THOMPSON RCE NAME C82557 RCE NO. 11/07/23 DATE

MARK	REVISIONS	APPR	DATE

SAN BERNARDINO COUNTY PROJECT AND FACILITIES MANAGEMENT DEPARTMENT
 RECOMMENDED BY: _____
 APPROVED BY: _____
 ELSY BANKS PROJECT MANAGER III DATE: _____

SAN BERNARDINO COUNTY SHERIFF'S DEPARTMENT
 EMERGENCY VEHICLE OPERATIONS CENTER
 ASPHALT & LIGHTING REPLACEMENT
 PROJECT NO. 10.10.1222
 PAVING AND SIGNING & STRIPING PLAN

ROAD NO. _____
 FILE NO. _____
 SHEET 16 OF 44



- ### SIGNING AND STRIPING NOTES
- INSTALL TWO-WAY YELLOW RETROREFLECTIVE PAVEMENT MARKER PER CALTRANS STD. PLAN A20B, DETAIL 25A ON SHEET 32.
 - PAINT WHITE EDGLINES PER CALTRANS STD. PLAN A20B, DETAIL 27B ON SHEET 32.
 - PAINT 6-INCH WIDE SOLID YELLOW LINE.
 - PAINT 'STOP' PAVEMENT MARKING PER CALTRANS STD. PLAN A24D ON SHEET 32.
 - PAINT 4-INCH WIDE SOLID WHITE LINE.
 - PAINT HANDICAP PARKING STRIPING WITH SYMBOL AND INSTALL PARKING SIGNS PER CALTRANS STD. PLAN A80A ON SHEET 32.
 - PAINT 12-INCH WIDE SOLID WHITE LIMIT LINE PER CALTRANS STD. PLAN A24G ON SHEET 32.
 - PAINT DOUBLE YELLOW CENTERLINE PER CALTRANS STD. PLAN A20A, DETAIL 21 ON SHEET 32.

- ### PAVING CONSTRUCTION NOTES
- CONSTRUCT 4" ASPHALT CONCRETE PAVEMENT OVER 5" AGGREGATE BASE OVER COMPACTED SUBGRADE PER RECOMMENDATIONS OF THE GEOTECHNICAL REPORT. CONSTRUCT EDGE OF PAVEMENT PER APPLICABLE CONDITION, SEE DETAIL 2 ON SHEET 33.
 - CONSTRUCT 6-1/2" PCC PAVEMENT OVER COMPACTED SUB-GRADE PER DETAIL 1 ON SHEET 33 AND THE RECOMMENDATIONS OF THE GEOTECHNICAL REPORT.
 - CONSTRUCT CURB RAMP PER CALTRANS STD. PLAN A88A, CASE A ON SHEET 33.
 - CONSTRUCT DRIVEWAY WITH CURB RETURNS PER COUNTY OF SAN BERNARDINO DEPARTMENT OF PUBLIC WORKS STD. PLAN 129B ON SHEET 33 WITH MODIFICATIONS AS FOLLOWS: APPROACH LENGTH AND SIDEWALK WIDTH PER PLAN.
 - CONSTRUCT 6" PCC CURB PER CALTRANS DETAIL A87A, TYPE 'A1' CURB ON SHEET 33.
 - CONSTRUCT 4" PCC SIDEWALK PER COUNTY OF SAN BERNARDINO DEPARTMENT OF PUBLIC WORKS STD. PLAN 109 ON SHEET 33.
 - PRESERVE AND PROTECT EXISTING STORM DRAIN INLET, ADJUST TO FINISHED GRADE IF NECESSARY.

- ### LEGEND
- PROPOSED ASPHALT PAVEMENT
 - PROPOSED CONCRETE PAVEMENT
 - EXISTING CONCRETE PAVEMENT TO REMAIN
 - RETROREFLECTIVE PAVEMENT MARKER
 - ADD-ALTERNATE #2 LIMITS OF WORK

COORDINATES

POINT #	NORTHING	EASTING
153	1888725.15	6747561.62
154	1888721.68	6747552.82
155	1888627.73	6747556.97
156	1888621.02	6747565.59
157	1888614.61	6747567.88
168	1888626.37	6747523.00
169	1888627.07	6747541.98
170	1888729.92	6747537.45
171	1888734.70	6747532.45

- ### SHEET NOTES
- FOR GENERAL NOTES, LEGEND, AND ABBREVIATIONS, SEE SHEET 1.
 - FOR CONSTRUCTION DETAILS, SEE SHEETS 32 AND 33.
 - FOR GRADING PLANS, SEE SHEETS 22 TO 31.
 - CONTRACTOR TO INCLUDE THE CONSTRUCTION OF THIS PARKING LOT AND ROADWAY AS AN ADD ALTERNATE IN THE BID DOCUMENTS.
 - FOR SITE LIGHTING IMPROVEMENTS, SEE ELECTRICAL PLANS - SHEETS 34 TO 39.

NOTE
 KINDER MORGAN'S CALNEV PIPELINE HAS AN EXISTING 8" HIGH PRESSURE FUEL LINE TRAVERSING THE SITE. CONTRACTOR SHALL HAVE A COPY OF THE 'GUIDELINES FOR DESIGN AND CONSTRUCTION NEAR KINDER MORGAN OPERATED FACILITIES'. DOCUMENT AND NOTIFY KINDER MORGAN FOR COORDINATION OF REQUIREMENTS PRIOR TO CONSTRUCTION. LINE SHALL BE CLEARLY INDICATED IN THE FIELD AND NO EXCAVATION SHALL OCCUR WITHIN 30 FEET OF THE PIPELINE WITHOUT A KINDER MORGAN INSPECTOR PRESENT.

NOT FOR BID

Underground Service Alert
 Call: TOLL FREE
 1-800-227-2600
 TWO WORKING DAYS BEFORE YOU DIG

BENCHMARK
 NATIONAL GEODETIC SURVEY BENCHMARK
 DESIGNATION: RF 51
 POINT: EV9108
 DATUM: NAVD 88
 ELEVATION: 1964.8 FEET
 DESCRIPTION: 0.6 KM SOUTHWEST ALONG PALM AVENUE FROM ITS JUNCTION WITH INTERSTATE HIGHWAY 215 AND HIGHWAY 206. THENCE 0.9 KM SOUTHWESTERLY ALONG INSTITUTION ROAD 23.5 M (77.1 FT) N OF THE CENTERLINE OF THE ROAD 62 M (171 FT) E OF THE CENTER OF A TRUCK ROAD 1.8 M (5.9 FT) W OF A UTILITY POLE. NUMBER 1891821E (0.4 M (1.6 FT) S OF A WITNESS POST 0.3 M (1.0 FT) ABOVE THE ROAD 0.2 M (1.2 FT) BELOW THE GROUND SURFACE.

PREPARED BY:

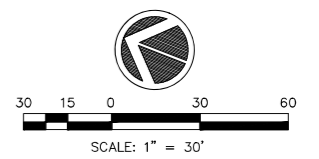
 801 VIA PIEMONTE SUITE 400
 ONTARIO, CA 91764
 PROJECT # 22006394.00
 PH 909.477.6915
 FAX 909.477.6916
 www.imeg.com
 JOHN M. THOMPSON
 RCE NAME
 C82557
 RCE NO.
 11/07/23
 DATE

MARK	REVISIONS	APPR	DATE

SAN BERNARDINO COUNTY
PROJECT AND FACILITIES MANAGEMENT DEPARTMENT
 RECOMMENDED BY:
 APPROVED BY:
 ELSY BANKS
 PROJECT MANAGER III

SAN BERNARDINO COUNTY
SHERIFF'S DEPARTMENT
EMERGENCY VEHICLE OPERATIONS CENTER
 ASPHALT & LIGHTING REPLACEMENT
 PROJECT NO. 10.10.1222
PAVING AND SIGNING & STRIPING PLAN

ROAD NO.
FILE NO.
SHEET 17 OF 44



NOT FOR BID

PAVING CONSTRUCTION NOTES

- ① CONSTRUCT 4" ASPHALT CONCRETE PAVEMENT OVER 4" 1 1/2" AGGREGATE BASE OVER COMPACTED SUBGRADE PER RECOMMENDATIONS OF THE GEOTECHNICAL REPORT. CONSTRUCT EDGE OF PAVEMENT PER AVAILABLE CONDITION, SEE DETAIL 2 ON SHEET 33.
- ② CONSTRUCT 6-1/2" PCC PAVEMENT OVER COMPACTED SUB-GRADE PER RECOMMENDATIONS OF THE GEOTECHNICAL REPORT.

LEGEND

- PROPOSED ASPHALT PAVEMENT
- PROPOSED CONCRETE PAVEMENT
- EXISTING CONCRETE PAVEMENT TO REMAIN
- LIMITS OF WORK

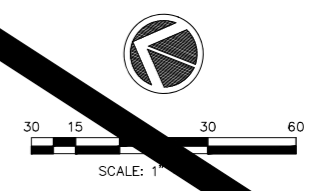
COORDINATES		
POINT #	NORTHING	EASTING
172	1888829.73	6748687.15
173	1888702.31	6748737.49
174	1888570.71	6748789.49
175	1888443.30	6748839.84
176	1888809.48	6748595.06
177	1888668.12	6748650.92
178	1888643.76	6748711.66
179	1888621.71	6748655.86
180	1888550.93	6748697.22
181	1888409.57	6748753.08
182	1888385.87	6748816.14
183	1888361.61	6748754.76

SHEET NOTES

1. FOR GENERAL NOTES, LEGEND, AND ABBREVIATIONS, SEE SHEET 1.
2. FOR CONSTRUCTION DETAILS, SEE SHEETS 32 AND 33.
3. FOR GRADING PLANS, SEE SHEETS 22 TO 31.
4. FOR SITE LIGHTING IMPROVEMENTS, SEE ELECTRICAL PLANS - SHEETS 34 TO 39.

MATCH LINE SEE SHEET 15

MATCH LINE SEE SHEET 19



Underground Service Alerts

 CALL FREE
 800-227-2600
 WORKING DAYS BEFORE YOU DIG

BENCHMARK
 NATIONAL GEODETIC SURVEY BENCHMARK
 DESIGNATION: RF 51
 ID: EV9108
 DATUM: NAVD 88
 ELEVATION: 196.43 FEET
 DESCRIPTION: 0.6 KM SOUTHWEST ALONG PALM AVENUE FROM ITS JUNCTION WITH INTERSTATE HIGHWAY 215 AND HIGHWAY 206. THENCE 0.9 KM SOUTHWESTERLY ALONG INSTITUTION ROAD 23.5 M (77.1 FT) N OF THE CENTERLINE OF THE ROAD 62 M (197 FT) E OF THE CENTER OF A TRACK ROAD 18.9 M (62 FT) W OF A UTILITY POLE. NUMBER 1891621E 0.6 M (0.6 FT) S OF A WITNESS POST 0.3 M (1.0 FT) ABOVE THE ROAD 0.2 M (0.2 FT) BELOW THE GROUND SURFACE.

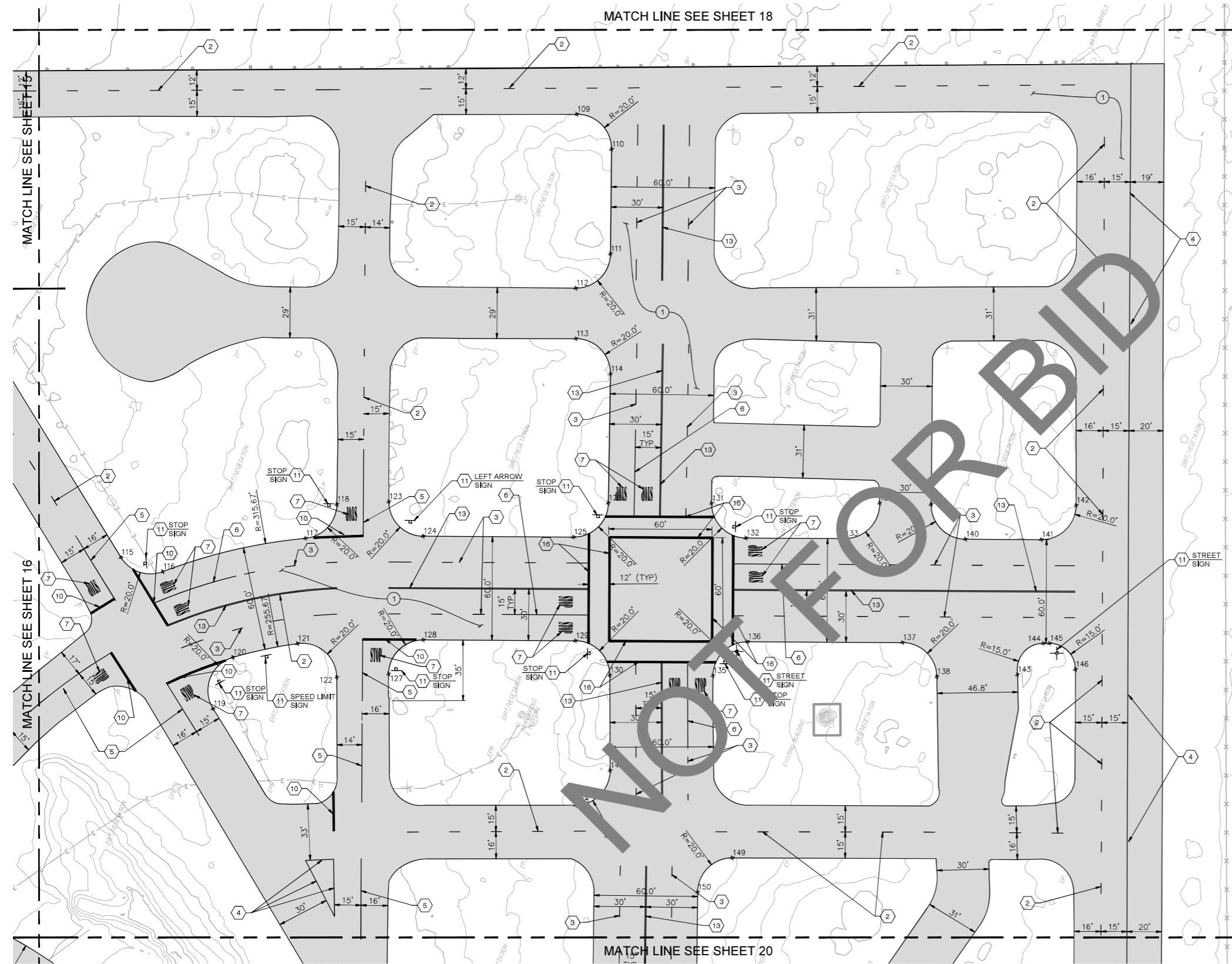
PREPARED BY:
IMEG
 901 VIA PIEMONTE SUITE 400
 CARLETON, CA 91764
 PROJECT # 22006394.00
 PH 909.477.6915
 FAX 909.477.6916
 www.imeg.com
 JOHN M. THOMPSON
 RCE NAME
 C82557
 RCE No.
 11/07/23
 DATE

MARK	REVISIONS	APPR	DATE

SAN BERNARDINO COUNTY
PROJECT AND FACILITIES MANAGEMENT DEPARTMENT
 RECOMMENDED BY: _____
 APPROVED BY: _____
 ELSY BANKS
 PROJECT MANAGER III
 DATE: _____

SAN BERNARDINO COUNTY
SHERIFF'S DEPARTMENT
EMERGENCY VEHICLE OPERATIONS CENTER
 ASPHALT & LIGHTING REPLACEMENT
 PROJECT NO. 10.10.1222
PAVING AND SIGNING & STRIPING PLAN

ROAD NO. _____
 FILE NO. _____
SHEET 18 OF 44



SIGNING AND STRIPING NOTES

- 2 PAINT YELLOW CENTERLINE PER CALTRANS STD, PLAN A20A, DETAIL 1 ON SHEET 32.
- 3 PAINT WHITE LANE LINE PER CALTRANS STD, PLAN A20A, DETAIL 8 ON SHEET 32.
- 4 PAINT WHITE EDGELINES PER CALTRANS STD, PLAN A20B, DETAIL 27B ON SHEET 32.
- 5 PAINT 6-INCH WIDE SOLID YELLOW LINE.
- 6 PAINT 6-INCH WIDE SOLID WHITE LINE.
- 7 PAINT 'STOP' PAVEMENT MARKING PER CALTRANS STD, PLAN A24D ON SHEET 32.
- 10 PAINT 12-INCH WIDE SOLID WHITE LIMIT LINE PER CALTRANS STD, PLAN A24G ON SHEET 32.
- 11 RELOCATE EXISTING SIGN TO THIS LOCATION.
- 13 PAINT DOUBLE YELLOW CENTERLINE MARKING PER CALTRANS STD, PLAN A20A, DETAIL 21 ON SHEET 32.
- 16 PAINT CROSSWALK PAVEMENT MARKING PER CALTRANS STD, PLAN A24F ON SHEET 32.

PAVING CONSTRUCTION NOTES

- 1 CONSTRUCT 4" ASPHALT CONCRETE PAVEMENT OVER 5" AGGREGATE BASE OVER COMPACTED SUBGRADE PER RECOMMENDATIONS OF THE GEOTECHNICAL REPORT. CONSTRUCT EDGE OF PAVEMENT PER APPLICABLE CONDITION, SEE DETAIL 2 ON SHEET 33.

LEGEND

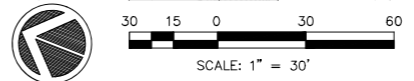


COORDINATES		
POINT #	NORTHING	EASTING
109	1888588.23	6748552.43
110	1888562.15	6748540.94
111	1888540.67	6748484.31
112	1888552.06	6748458.60
113	1888541.33	6748431.37
114	1888515.37	6748419.70
115	1888740.43	6748217.56
116	1888714.93	6748218.72
117	1888644.99	6748266.80
118	1888635.27	6748291.67
119	1888658.84	6748155.51
120	1888659.05	6748187.32
121	1888627.11	6748208.38
122	1888598.86	6748198.47
123	1888607.82	6748304.08
124	1888582.02	6748292.74
125	1888500.82	6748324.03
126	1888489.27	6748349.68
127	1888571.64	6748211.24
128	1888560.09	6748236.89
129	1888477.95	6748268.54

COORDINATES		
POINT #	NORTHING	EASTING
130	1888452.17	6748257.23
131	1888433.55	6748371.32
132	1888407.71	6748359.89
133	1888354.33	6748380.46
134	1888343.07	6748406.86
135	1888396.46	6748278.75
136	1888384.90	6748304.38
137	1888301.31	6748336.58
138	1888275.61	6748325.49
139	1888315.03	6748417.11
140	1888289.15	6748405.57
141	1888248.20	6748421.34
142	1888236.71	6748447.16
143	1888232.60	6748343.58
144	1888225.21	6748365.90
145	1888221.84	6748367.20
146	1888202.47	6748358.64
147	1888431.89	6748205.99
148	1888443.13	6748180.04
149	1888347.65	6748184.67
150	1888359.06	6748158.99

SHEET NOTES

- 1. FOR GENERAL NOTES, LEGEND, AND ABBREVIATIONS, SEE SHEET 1.
- 2. FOR CONSTRUCTION DETAILS, SEE SHEETS 32 AND 33.
- 3. FOR GRADING PLANS, SEE SHEETS 22 TO 31.
- 4. FOR SITE LIGHTING IMPROVEMENTS, SEE ELECTRICAL PLANS - SHEETS 34 TO 39.
- 5. FOR TRAFFIC SIGNAL IMPROVEMENTS, SEE SHEETS 40 TO 44.



Underground Service Alert

Call: TOLL FREE
1-800-227-2600

TWO WORKING DAYS BEFORE YOU DIG

BENCHMARK

NATIONAL GEODETIC SURVEY BENCHMARK

DESIGNATION: RF 51
 PD: EV9108
 DATUM: NAVD 83
 ELEVATION: 1064.3 FEET

DESCRIPTION: 0.6 KM SOUTHWEST ALONG PALM AVENUE FROM ITS JUNCTION WITH INTERSTATE HIGHWAY 215 AND HIGHWAY 206, THENCE 0.9 KM SOUTHWESTERLY ALONG INSTITUTION ROAD 23.5 M (77.1 FT) N OF THE CENTERLINE OF THE ROAD 62 M (203.7 FT) E OF THE CENTER OF A TRUCK ROAD 1.8 M (5.9 FT) W OF A UTILITY POLE NUMBER 1891821E 0.4 M (1.3 FT) S OF A WITNESS POST 0.3 M (1.0 FT) ABOVE THE ROAD 0.2 M (0.7 FT) BELOW THE GROUND SURFACE.

PREPARED BY:

801 VIA PIEMONTE
SUITE 400
ONTARIO, CA 91764
PROJECT # 22006394.00

PH 909.477.8915
FAX 909.477.2916
www.imeg.com

JOHN M. THOMPSON
RCE NAME

C82557
RCE NO.

11/07/23
DATE

MARK

REVISIONS	APPR	DATE

**SAN BERNARDINO COUNTY
PROJECT AND FACILITIES MANAGEMENT DEPARTMENT**

RECOMMENDED BY: _____

APPROVED BY: _____

ELSY BANKS
PROJECT MANAGER III

DATE: _____

**SAN BERNARDINO COUNTY
SHERIFF'S DEPARTMENT**

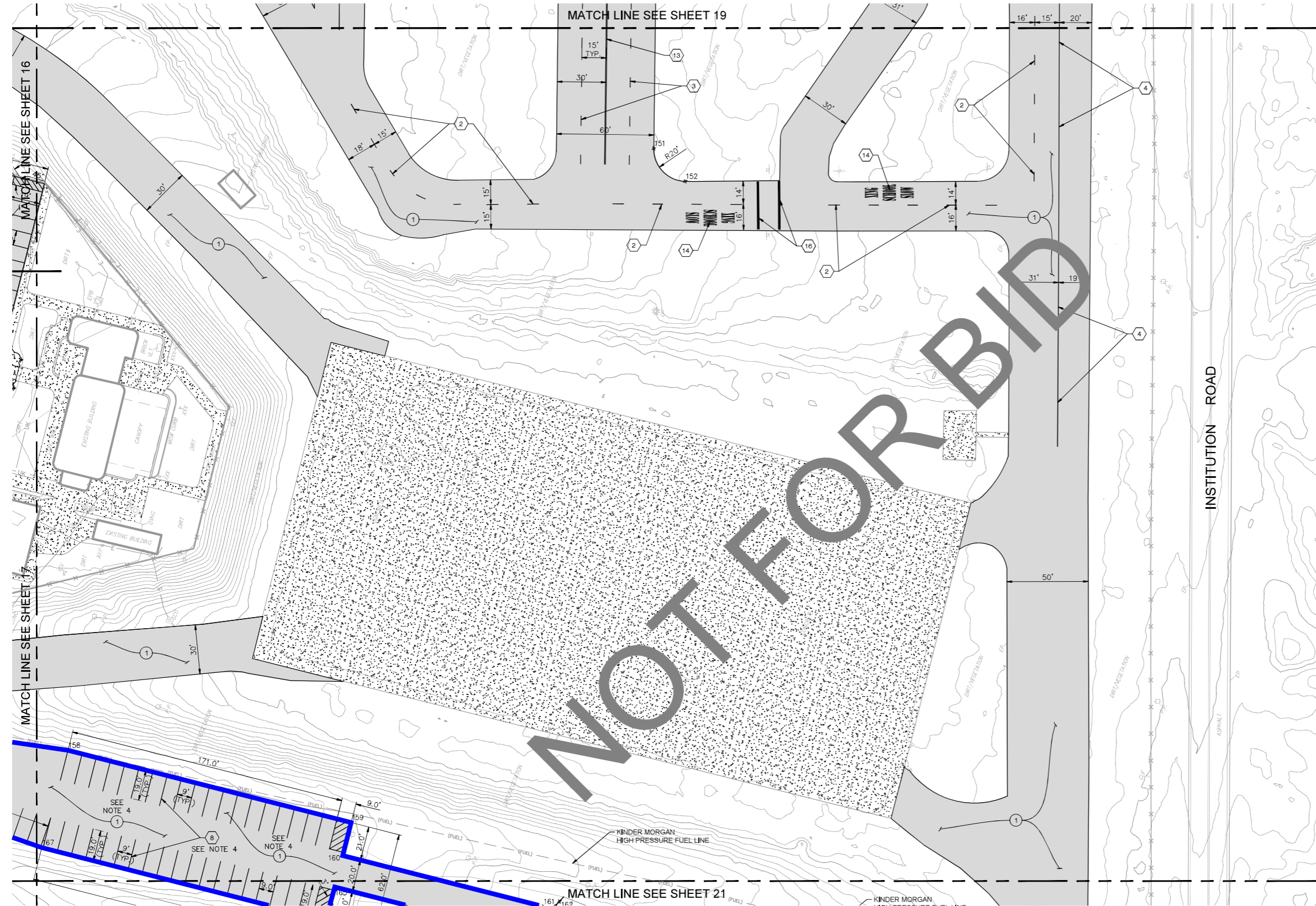
EMERGENCY VEHICLE OPERATIONS CENTER

ASPHALT & LIGHTING REPLACEMENT
PROJECT NO. 10.10.1222
PAVING AND SIGNING &
STRIPING PLAN

ROAD NO.

FILE NO.

SHEET 19 OF 44



- ### SIGNING AND STRIPING NOTES
- 2 PAINT YELLOW CENTERLINE PER CALTRANS STD. PLAN A20A, DETAIL 1 ON SHEET 32.
 - 3 PAINT WHITE LANE LINE PER CALTRANS STD. PLAN A20A, DETAIL 8 ON SHEET 32.
 - 4 PAINT WHITE EDGELINES PER CALTRANS STD. PLAN A20B, DETAIL 27B ON SHEET 32.
 - 8 PAINT 4-INCH WIDE SOLID WHITE LINE.
 - 14 PAINT 'SLOW' AND 'SCHOOL XING' PAVEMENT MARKINGS PER CALTRANS STD. PLAN A24D ON SHEET 32.
 - 13 PAINT DOUBLE YELLOW CENTERLINE MARKING PER CALTRANS STD. PLAN A20A, DETAIL 21 ON SHEET 32.
 - 16 PAINT CROSSWALK PAVEMENT MARKING PER CALTRANS STD. PLAN A24F ON SHEET 32.

- ### PAVING CONSTRUCTION NOTES
- 1 CONSTRUCT 4" ASPHALT CONCRETE PAVEMENT OVER 5" AGGREGATE BASE OVE COMPACTED SUBGRADE PER RECOMMENDATIONS OF THE GEOTECHNICAL REPORT. CONSTRUCT EDGE OF PAVEMENT PER APPLICABLE CONDITION, SEE DETAIL 2 ON SHEET 33.

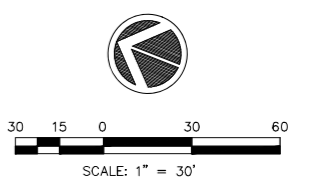
- ### LEGEND
- PROPOSED ASPHALT PAVEMENT
 - EXISTING CONCRETE PAVEMENT TO REMAIN
 - ADD-ALTERNATE #2 LIMITS OF WORK

COORDINATES		
POINT #	NORTHING	EASTING
151	1888323.60	6748065.10
152	1888298.22	6748053.31
158	1888524.45	6747588.61
159	1888345.83	6747610.86
160	1888343.24	6747590.02
167	1888517.61	6747526.98

- ### SHEET NOTES
1. FOR GENERAL NOTES, LEGEND, AND ABBREVIATIONS, SEE SHEET 1.
 2. FOR CONSTRUCTION DETAILS, SEE SHEETS 32 AND 33.
 3. FOR GRADING PLANS, SEE SHEETS 22 TO 31.
 4. CONTRACTOR TO INCLUDE CONSTRUCTION OF THIS PARKING LOT AND ROADWAY AS AN ADD ALTERNATE IN THE BID DOCUMENTS.
 5. FOR SITE LIGHTING IMPROVEMENTS, SEE ELECTRICAL PLANS - SHEETS 34 TO 39.

NOTE

KINDER MORGAN'S CALNEV PIPELINE HAS AN EXISTING 8" HIGH PRESSURE FUEL LINE TRAVERSING THE SITE. CONTRACTOR SHALL HAVE A COPY OF THE "GUIDELINES FOR DESIGN AND CONSTRUCTION NEAR KINDER MORGAN OPERATED FACILITIES". DOCUMENT AND NOTIFY KINDER MORGAN FOR COORDINATION OF REQUIREMENTS PRIOR TO CONSTRUCTION. LINE SHALL BE CLEARLY INDICATED IN THE FIELD AND NO EXCAVATION SHALL OCCUR WITHIN 30 FEET OF THE PIPELINE WITHOUT A KINDER MORGAN INSPECTOR PRESENT.



Underground Service Alert

Call: TOLL FREE
1-800-227-2600

TWO WORKING DAYS BEFORE YOU DIG

BENCHMARK

NATIONAL GEODETIC SURVEY BENCHMARK

DESIGNATION: RF 51
 PD: EV9108
 DATUM: NAVD 83
 ELEVATION: 1064.3 FEET

DESCRIPTION: 0.5 KM SOUTHWEST ALONG PALM AVENUE FROM ITS JUNCTION WITH INTERSTATE HIGHWAY 215 AND HIGHWAY 205. THENCE 0.5 KM SOUTHWESTERLY ALONG INSTITUTION ROAD 23.5 M (77.1 FT) N OF THE CENTERLINE OF THE ROAD 6.0 M (19.7 FT) E OF THE CENTER OF A TRUCK ROAD 14.0 M (45.9 FT) W OF A UTILITY POLE. NUMBER 1891621E 0.3 M (0.9 FT) S OF A WITNESS POST 0.3 M (1.0 FT) ABOVE THE ROAD 0.2 M (0.7 FT) BELOW THE GROUND SURFACE.

PREPARED BY:

IMEG

801 VIA MEMONTE SUITE 800
 CHATWORTH, CA 91311
 PROJECT # 22006394.00

PH: 909.477.2915
 FAX: 909.477.2916
 www.imeg.com

JOHN M. THOMPSON
 RCE NAME

C82557
 RCE NO.

11/07/23
 DATE

MARK	REVISIONS	APPR	DATE

SAN BERNARDINO COUNTY
 PROJECT AND FACILITIES MANAGEMENT DEPARTMENT

RECOMMENDED BY: _____

APPROVED BY: _____

ELSY BANKS
 PROJECT MANAGER III

DATE: _____

SAN BERNARDINO COUNTY
 SHERIFF'S DEPARTMENT

EMERGENCY VEHICLE OPERATIONS CENTER

ASPHALT & LIGHTING REPLACEMENT
 PROJECT NO. 10.10.1222

PAVING AND SIGNING &
 STRIPING PLAN

ROAD NO.

FILE NO.

SHEET 20 OF 44