



Contract Number

\_\_\_\_\_

SAP Number

\_\_\_\_\_

### Sheriff/Coroner/Public Administrator

<b>Department Contract Representative</b>	Carolina Mendoza, Chief Deputy Director of Sheriff's Administration
<b>Telephone Number</b>	(909) 387-0640
<b>Contractor</b>	West Coast Lights & Sirens
<b>Contractor Representative</b>	Mitchel Gonzalez
<b>Telephone Number</b>	(951) 779-9257
<b>Contract Term</b>	7/1/2026 – 6/30/2029
<b>Original Contract Amount</b>	Fee per Service Contract
<b>Amendment Amount</b>	-----
<b>Total Contract Amount</b>	-----
<b>Cost Center</b>	4430001000
<b>Grant Number (if applicable)</b>	N/A

**IT IS HEREBY AGREED AS FOLLOWS:**

**WHEREAS**, San Bernardino County (County), by and through its included Sheriff/Coroner/Public Administrator (Sheriff), desires to designate a Contractor of choice to provide vehicle safety equipment, parts, and accessories, along with installation and removal services, of such equipment, parts, and accessories (Services); and

**WHEREAS**, the County conducted a competitive process to find West Coast Lights & Sirens (Contractor) to provide these Services, and

**WHEREAS**, the County finds Contractor qualified to provide these Services; and

**WHEREAS**, the County desires that such Services be provided by Contractor and Contractor agrees to perform these Services as set forth below;

**NOW, THEREFORE**, the County and Contractor mutually agree to the following terms and conditions:

**A. DEFINITIONS**

**A.1** Board: The San Bernardino County Board of Supervisors.

**A.2** Contract: The Contract between the County and the Contractor that specifies the terms and conditions of how the Contractor will provide services or products to the County.

- A.3 Contractor: Any individual, company, firm, corporation, partnership, or other organization identified as providing the Services, and to whom a Contract award is made by the County.
- A.4 Purchasing Agent: The Director of the County Purchasing Department, or their designee.
- A.5 Purchase Order (PO): A purchase order specifying the types and quantity of Products, Services, or Software ordered, the method of delivery, the delivery date required, and the location to which Products or Software are to be shipped or the Services are to be provided.
- A.6 Services: The requested Services described in the Contract.
- A.7 Subcontractor: An individual, company, firm, corporation, partnership, or other organization, not in the employment of or owned by Contractor, who is performing Services on behalf of Contractor under the Contract or under a separate contract with or on behalf of Contractor.

**B. CONTRACTOR RESPONSIBILITIES**

**B.1 General Information**

The Sheriff typically purchases between 200-300 vehicles per year. These vehicles are a combination of sedans, utility vehicles, prisoner transport vans, unmarked vehicles, 4x4s and Off Highway Vehicles (OHV) that require certain safety equipment and accessories that are to be provided and, if applicable, fabricated by the Contractor. Additionally, Contractor shall provide installation and removal services for such safety equipment and accessories. The following are examples of vehicles that are purchased by Sheriff:

Ford Transit 350	Toyota Camry
Ford Explorer	Chevy Traverse
Ford Explorer Interceptor All Wheel Drive	Chevrolet Colorado
Ford Bronco	Chevrolet Tahoe
Chevy Equinox	Full-Size Domestic Trucks
Ford Ranger	Honda Accord
Ford Expedition	Off-Highway Vehicles – OHV

The above list is not exhaustive; the Sheriff reserves the right to purchase vehicles not represented and utilize the Services of the Contractor throughout the term of the Contract.

**B.2 Vehicle Parts and Accessories**

Contractor shall supply and, when applicable, fabricate, parts and accessories, in quantities ordered, and at times needed. Vehicle parts and accessories may vary depending on Sheriff's needs. Manufacturers and specifications for parts and accessories are listed on Attachment A – Cost – Equipment, Parts, and Accessories, attached hereto and incorporated herein by this reference. Material substitutions will not be accepted. Additional parts and accessories may be requested by the Sheriff's Fleet Supervisor or designee throughout the Contract period.

**B.3 Vehicle Equipment Installation and Removal Services**

Contractor shall provide installation and removal services for equipment, parts, and accessories provided in section B.2 above, in quantities ordered, and at times needed. Installation or removal services may vary depending on Sheriff's needs. Vehicle types in which equipment shall be installed are listed on Attachment B – Cost – Equipment, Parts, and Accessories Installation and Removal Services, attached hereto and incorporated herein by this reference. Installation and removal of additional parts and accessories may be requested by the Sheriff's Fleet Supervisor or designee throughout the Contract period.

The Sheriff will deliver and pick up vehicles requiring equipment installation and/or removal services to and from the Contractor's facility(ies). The Sheriff will provide specific safety equipment and components, such as, but not limited to, in-vehicle radios and video cameras, for installation, except for other equipment, parts, and components that must be provided and/or

fabricated by the Contractor. Equipment manufacturers may vary depending on Sheriff's requirements.

Vehicle equipment installation and removal services specified herein shall be at the discretion of the Sheriff's Bureau of Administration Chief Deputy Director, Lieutenant, or Fleet Supervisor, and shall either meet or exceed the requirements herein:

**B.3.1 Contractor Facility(ies).** The County reserves the right to inspect Contractor's facility(ies) at any time during the Contract period to verify compliance with minimum standards described herein:

- a. Vehicle equipment installation and removal services shall be conducted at Contractor-owned and/or operated facility(ies) located within a forty (40) mile radius of the Sheriff Headquarters, located at 655 East Third Street, San Bernardino, CA 92415.
- b. Any cost associated with the operation and/or maintenance of Contractor facility(ies) shall be at no cost to the County.
- c. Contractor shall ensure that facility(ies) maintain compliance with all applicable local and California state laws and regulations.
- d. Contractor shall provide Services in a secure location with restricted access limited to its employees and other authorized or designated visitors (i.e., customers, vendors, suppliers, etc.).
- e. Contractor facility(ies) shall provide a professional atmosphere.
- f. Contractor facility(ies) must be able to accommodate multiple Sheriff's vehicles for equipment installation Services at any given time.
- g. Contractor shall provide warranty(ies) of workmanship.

**B.3.2 Vehicle Security.**

- a. Contractor shall guarantee the security of Sheriff's vehicles and all items and equipment in the vehicles.
- b. Contractor shall be liable for any damages to vehicles caused by vandalism or employee negligence while in the Contractor's care.
- c. Contractor shall be held liable to replace all items or equipment in vehicles that fall prey to theft, damage, or vandalism while in the Contractor's care.

**B.3.3** Contractor shall complete all equipment installations in a safe and professional manner and the completed vehicle shall reflect quality workmanship.

**B.3.4** Any equipment not supplied by the Sheriff or Contractor that is necessary to complete the installation must be approved by the Sheriff's Bureau of Administration Chief Deputy Director, Lieutenant, or Fleet Supervisor prior to installation. On certain vehicles, some components may need to be fabricated by the Contractor. Fabricated parts are included in the cost listed on Attachment B – Cost – Equipment, Parts, and Accessories Installation and Removal Services.

**B.3.5 Turn-Around Times.**

Turn-Around times shall exclude weekends and holidays observed by the County, including New Year's Day, Martin Luther King Jr. Day, President's Day, Memorial Day, Juneteenth, Independence Day, Labor Day, Columbus Day, Veterans' Day, Thanksgiving Day and the day after, Christmas Eve, Christmas Day, and New Year's Eve.

- a. Transport Vans – Ten (10) days, but may request, in advance, additional time for custom fabrication.
- b. Marked Ford Explorer Interceptor, Chevrolet Tahoe, or similar Utility Vehicles – Five (5) days.
- c. Marked and Unmarked "Slick-Top" Ford Explorer UV Interceptor or similar SUV – Five (5) days.

- d. Marked Pickup Trucks – Five (5) days.
- e. Unmarked Sedans, SUVs, and Pickup Trucks or similar – Maximum Four (4) days.
- f. OHV – Fourteen (14) days, but may request, in advance, additional time for custom fabrication.

**B.3.6** Contractor shall not subcontract work on any Sheriff's vehicle without prior written consent from the Sheriff's Bureau of Administration Chief Deputy Director, Lieutenant, or Fleet Supervisor.

**B.3.7** Transport Vans.

- a. Contractor shall purchase, fabricate, and install Lexan in all windows (except driver's window and front passenger window); all moldings are to be replaced. Contractor shall disable and cover all openings that inmates have access to with metal plates (i.e., locking devices, internal holes, speaker holes, etc.).
- b. Contractor shall fabricate and install two (2) sliding cages, fabricate and install one (1) rear cage with an escape hatch, and install the provided front partition.
- c. Contractor shall purchase and install four (4) new stagecoach lights and wire them in a row to the light controller.
- d. Contractor shall install a rear step.
- e. Contractor shall install a weapon mount and weapon locks, flashlight charger (all wired ignition hot), wire for docking port, install an 800 MHz antenna, and install and wire the provided 800 MHz radio, emergency lighting, and siren equipment (see Exhibit No.1 – Marked Vehicles Wiring Diagram).
- f. Contractor shall install a steady red/blue LED light mounted on the interior of the vehicle to the right of the rearview mirror. Lights must be wired to the number two and number three positions on the switch.
- g. Contractor shall install amber/blue LED lights on the outside rear roof on the left and right corners.
- h. Contractor shall supply and install a rear chain box.
- i. Contractor shall reverse the rear seat to face towards the rear doors and fabricate mounting plates for the reversing seat.
- j. Contractor shall powder coat all metal parts silver/grey.

**B.3.8** Utility Vehicles/Marked Patrol.

Contractor shall install the following parts/components:

- a. Sheriff's 800 MHz radio and antenna. Contractor shall mount an 800 MHz radio RT pack in the cargo area, with the radio head and speaker installed in the center console (see Exhibit No. 1 – Marked Vehicles Wiring Diagram).
- b. Sheriff's Axon front and rear video cameras harnesses (see Exhibit No. 1 – Marked Vehicles Wiring Diagram).
- c. Rooftop Light bar with brackets, or inside windshield for slick-top units.
- d. Siren (complete) with controller mounted overhead and amplifier mounted on the rear false wood wall behind the rear cage.
- e. Two (2) quarter Glass Red/Blue LED lights.
- f. One (1) Rumbler and bracket.
- g. Antennas (two (2) regular and one dome).
- h. Cages (front and rear).
- i. Shotgun/AR15 gun rack with locks.
- j. Less lethal shotgun mount (rear) with lock.
- k. Rear Shelf – UV.

- l. Rear window guards on quarter glass and hatch.
- m. Two (2) front push bumper-mounted siren speakers with brackets.
- n. Flashlight charger base with bracket.
- o. MDC mounting plates, console, cup holder, and computer power supply.
- p. Four (4) red/blue LED lights mounted on push bumper.
- q. Two (2) tri-color LED corner lights mounted in headlamp housing.
- r. Two (2) tri-color red/amber/blue LED lights mounted in the rear hatch visor.
- s. Two (2) rear interior hatch-mounted amber/blue LED.
- t. Center push bumper with no wraparounds.
- u. Common mic adapter.
- v. Traffic signal strobe emitter mounted on upper lightbar bracket, or for “slick top” units, on the interior windshield.

**B.3.9 Unmarked Vehicles.**

Contractor shall install the following parts/components:

- a. Sheriff’s 800 MHz radio and antenna. Contractor shall mount the 800 MHz Radio Transmitter (RT) pack in the trunk, with the radio head and speaker on or near the center console, or the radio head to be mounted and hidden in the glove box or the center console.
- b. Federal Signal Pathfinder 200 siren, amp mounted in the trunk, with handheld controller mounted in the center console, with the siren speaker and the rumbler mounted to the front of the vehicle and hidden behind the front grille (see Exhibit No. 2 – Unmarked Vehicle Lights, Radio and Siren Wiring Diagram).
- c. Steady red light with shroud mounted on the windshield to the left of the interior rear-view mirror and flashing blue light with shroud mounted on the right of the interior rear-view mirror. Lights must be wired to the number two (2) and number three (3) positions on the switch.
- d. Two (2) amber/blue with shroud mounted on the rear window glass.
- e. Flashing blue/red lights mounted on each side of the rear quarter glass.
- f. Flashlight charger with mount.
- g. Contractor shall wire and fuse all vehicles to Sheriff’s standards.

**B.4 Additional Requirements**

- B.4.1** Contractor shall have personnel trained to work on Federal Signal-made products.
- B.4.2** Contractor must be able to provide custom fabrication services upon the request of the Sheriff, on an as-needed basis. Any additional custom fabrication work shall be invoiced as labor cost only.
- B.4.3** An authorized employee of the Sheriff must inspect each completed vehicle prior to acceptance, and the employee must sign the invoice, one per vehicle, with their signature, printed name, and employee ID number to be considered valid.
- B.4.4** A copy of the invoice must be supplied to the Sheriff upon the acceptance of the vehicle.
- B.4.5** See section F – Fiscal Provisions, for additional invoice requirements.

**B.5 Personnel**

Sheriff shall have the sole discretion to determine the security acceptability of all Contractor’s personnel at any time during the Contract period. Personnel found to be unacceptable security risks shall not be permitted to provide Services. Violation of the provisions below may result in the loss of Contractor’s personnel security clearance. In addition to the terms and conditions listed in section C.6 – Background Checks for Contractor Personnel, Contractor shall adhere to the following:

- B.5.1** Contractor shall provide a list of individuals who render Services as personnel, and/or Subcontractor, who will enter Sheriff facilities under the Contract. The list shall be kept current and updated by the Contractor for the duration of the Contract period. Contractor's personnel or Subcontractors may not be changed without the written approval of Sheriff.
- B.5.2** Contractor shall immediately notify Sheriff regarding any personnel reassignments, discharges, or terminations so that they may be removed from the facility access list. Contractor's notifications regarding such action shall be submitted verbally within twenty-four (24) hours, followed by written notification within five (5) business days. All Contractor's personnel shall possess a government-issued photo identification and shall meet Sheriff's requirements for admission into any County facility. Additionally, Sheriff shall maintain information on Contractor's personnel for safety and security purposes.
- B.5.3** Contractor personnel and Subcontractors shall be required to complete additional forms, including non-disclosure agreements, at any time. Non-disclosure agreements acknowledge that information Contractor personnel and/or Subcontractors may encounter while at any County facility is confidential and proprietary. Any unauthorized release of confidential or proprietary information by Contractor, its personnel, and/or Subcontractors shall constitute a breach of Contract and will be punishable by law. Sheriff reserves the right to enforce any available remedy at law or in equity, in the event of such breach.
- B.5.4** Background Investigation. At Contractor's sole expense, all personnel and/or Subcontractors performing work on behalf of the Contractor under the Contract are required to undergo, and pass to the satisfaction of the Sheriff, a background investigation as a condition of providing Services. Background investigations shall include, but are not limited to, criminal conviction information obtained through fingerprints submitted to the California Department of Justice and the Federal Bureau of Investigation, Live Scan, background questionnaire, and photographs.

Contractor personnel must complete Live Scan fingerprinting services at Sheriff's Headquarters located at 655 East Third Street, San Bernardino, California, 92415, unless otherwise requested by Sheriff. Upon Contractor's personnel, Subcontractors, or agents failing a background investigation, Sheriff will request that the individual be removed from performing work at any time during the Contract period. Contractor shall only be notified of the final security determination of its personnel. Specific details shall remain confidential and will not be provided to Contractor.

## **C. GENERAL CONTRACT REQUIREMENTS**

### **C.1 Recitals**

The recitals set forth above are true and correct and incorporated herein by this reference.

### **C.2 Contract Amendments**

Contractor agrees any alterations, variations, modifications, or waivers of the provisions of the Contract, shall be valid only when reduced to writing, executed, and attached to the original Contract and approved by the person(s) authorized to do so on behalf of Contractor and County.

### **C.3 Contract Assignability**

Without the prior written consent of the County, the Contract is not assignable by Contractor either in whole or in part.

### **C.4 Contract Exclusivity**

This is not an exclusive Contract. The County reserves the right to enter into a contract with other Contractors for the same or similar Services. The County does not guarantee or represent that the Contractor will be permitted to perform any minimum amount of work or receive compensation other than on a per-order basis, under the terms of the Contract.

**C.5 Attorney Fees and Costs**

If any legal action is instituted to enforce any party's rights hereunder, each party shall bear its own costs and attorneys' fees, regardless of who is the prevailing party. This paragraph shall not apply to those costs and attorneys' fees directly arising from a third-party legal action against a party hereto and payable under the Indemnification and Insurance Requirements.

**C.6 Background Checks for Contractor Personnel**

Contractor shall ensure that its personnel (a) are authorized to work in the jurisdiction in which they are assigned to perform Services; (b) have not been convicted of a felony, are not proven substance abusers, and do not use legal or illegal substances in any manner which will impact their ability to provide Services to the County; and (c) are not otherwise disqualified from performing the Services under applicable law. If requested by the County and not in violation of applicable law, Contractor shall conduct a background check, at Contractor's sole expense, on all its personnel providing Services. If requested by the County, Contractor shall provide the results of the background check of each individual to verify that the individual meets the County's standards for employment. Such background check shall be in the form generally used by Contractor in its initial hiring of employees or contracting for contractors or, as applicable, during the employment-screening process but must, at a minimum, have been performed within the preceding 12-month period. Contractor personnel who do not meet the County's hiring criteria, in County's sole discretion, shall not be assigned to work on County property or provide Services, and County shall have the right, at its sole option, to refuse access to any Contractor personnel to any County facility.

**C.7 Change of Address**

Contractor shall notify the County, in writing, of any change in mailing address within ten (10) business days of the change.

**C.8 Choice of Law**

The Contract shall be governed by and construed according to the laws of the State of California.

**C.9 Compliance with County Policy**

In performing the Services and while at any County facilities, Contractor personnel (including subcontractors) shall (a) conduct themselves in a businesslike manner; (b) comply with the policies, procedures, and rules of the County regarding health and safety, and personal, professional and ethical conduct; (c) comply with the finance, accounting, banking, Internet, security, and/or other applicable standards, policies, practices, processes, procedures, and controls of the County; and (d) abide by all laws applicable to the County facilities and the provision of the Services, and all amendments and modifications to each of the documents listed in subsections (b), (c), and (d) (collectively, "County Policies"). County Policies, and additions or modifications thereto, may be communicated orally or in writing to Contractor or Contractor personnel or may be made available to Contractor or Contractor personnel by conspicuous posting at a County facility, electronic posting, or other means generally used by County to disseminate such information to its employees or contractors. Contractor shall be responsible for the promulgation and distribution of County Policies to Contractor personnel to the extent necessary and appropriate.

County shall have the right to require Contractor's employees, agents, representatives, and subcontractors to exhibit identification credentials issued by County in order to exercise any right of access under the Contract.

**C.10 Confidentiality**

Contractor shall protect from unauthorized use or disclosure of names and other identifying information concerning persons receiving Services pursuant to the Contract, except for statistical information not identifying any participant. Contractor shall not use or disclose any identifying information for any purpose other than carrying out the Contractor's obligations under the Contract,

except as may otherwise be required by law. This provision will remain in force even after the termination of the Contract.

**C.11 Primary Point of Contact**

Contractor will designate an individual to serve as the primary point of contact for the Contract. Contractor or designee must respond to County inquiries within two (2) business days. Contractor shall not change the primary contact without written acknowledgement to the County. Contractor will also designate a back-up point of contact in the event the primary contact is not available.

**C.12 County Representative**

The Sheriff, or designee, shall represent the County in all matters pertaining to the Services to be rendered under this Contract, including termination and assignment of this Contract, and shall be the final authority in all matters pertaining to the Services/Scope of Work by Contractor. If this Contract was initially approved by the San Bernardino County Board of Supervisors, then the Board of Supervisors must approve all amendments to the Contract, unless otherwise delegated.

**C.13 Damage to County Property**

Contractor shall repair, or cause to be repaired, at its own cost, all damages to County vehicles, facilities, buildings, or grounds caused by the willful or negligent acts of Contractor or its employees or agents. Such repairs shall be made immediately after Contractor becomes aware of such damage, but in no event later than thirty (30) days after the occurrence.

If the Contractor fails to make timely repairs, the County may make any necessary repairs. For such repairs, the Contractor shall repay all costs incurred by the County, by cash payment upon demand, or County may deduct such costs from any amounts due to the Contractor from the County, as determined at the County's sole discretion.

**C. 14 Debarment and Suspension**

Contractor certifies that neither it nor its principals or subcontractors is presently debarred, suspended, proposed for debarment, declared ineligible, or voluntarily excluded from participation in this transaction by any federal department or agency. (See the following United States General Services Administration's System for Award Management website <https://www.sam.gov>). Contractor further certifies that if it or any of its subcontractors are business entities that must be registered with the California Secretary of State, they are registered and in good standing with the Secretary of State.

**C.15 Drug and Alcohol Free Workplace**

In recognition of individual rights to work in a safe, healthful, and productive workplace, as a material condition of the Contract, the Contractor agrees that the Contractor and the Contractor's employees, while performing Services for the County, on County property, or while using County equipment:

- C.15.1** Shall not be in any way impaired because of being under the influence of alcohol or an illegal or controlled substance.
- C.15.2** Shall not possess an open container of alcohol or consume alcohol or possess or be under the influence of an illegal or controlled substance.
- C.15.3** Shall not sell, offer, or provide alcohol or an illegal or controlled substance to another person, except where Contractor or Contractor's employee, who as part of the performance of normal job duties and responsibilities, prescribes or administers medically prescribed drugs.

The Contractor shall inform all employees who are performing Services for the County on County property, or using County equipment, of the County's objective of a safe, healthful, and productive workplace and the prohibition of drug or alcohol use or impairment from same while performing such Services for the County.

The County may terminate for default or breach of this Contract and any other Contract the Contractor has with the County, if the Contractor or Contractor's employees are determined by the County not to be in compliance with the above.

**C.16 Duration of Terms**

The Contract, and all of its terms and conditions, shall be binding upon and shall inure to the benefit of the heirs, executors, administrators, successors, and assigns of the respective parties, provided no such assignment is in violation of the provisions of the Contract.

**C.17 Employment Discrimination**

During the term of the Contract, Contractor shall not discriminate against any employee or applicant for employment because of race, religious creed, color, national origin, ancestry, physical disability, mental disability, medical condition, genetic information, marital status, sex, gender, gender identity, gender expression, sexual orientation, age, or military and veteran status. Contractor shall comply with Executive Orders 11246, 11375, 11625, 12138, 12432, 12250, 13672, Title VI and Title VII of the Civil Rights Act of 1964, the California Fair Employment and Housing Act, and other applicable federal, state, and County laws and regulations and policies relating to equal employment and contracting opportunities, including laws and regulations hereafter enacted.

**C.18 Environmental Requirements**

In accordance with County Policy 11-08, the County prefers to acquire and use products with higher levels of post-consumer recycled content. Environmentally preferable goods and materials must perform satisfactorily and be available at a reasonable price. The County requires Contractor to use recycled paper for any printed or photocopied material created as a result of the Contract. Contractor is also required to use both sides of paper sheets for reports submitted to the County whenever practicable.

To assist the County in meeting the reporting requirements of the California Integrated Waste Management Act of 1989 (AB 939), Contractor must be able to annually report the County's environmentally preferable purchases. Contractor must also be able to report on environmentally preferable goods and materials used in the provision of their service to the County, utilizing a County-approved form.

**C.19 Improper Influence**

Contractor shall make all reasonable efforts to ensure that no County officer or employee, whose position in the County enables him/her to influence any award of the Contract or any competing offer, shall have any direct or indirect financial interest resulting from the award of the Contract or shall have any relationship to the Contractor or officer or employee of the Contractor.

**C.20 Improper Consideration**

Contractor shall not offer (either directly or through an intermediary) any improper consideration, such as, but not limited to, cash, discounts, service, the provision of travel or entertainment, or any items of value, to any officer, employee, or agent of the County in an attempt to secure favorable treatment regarding the Contract.

The County, by written notice, may immediately terminate the Contract if it determines that any improper consideration as described in the preceding paragraph was offered to any officer, employee, or agent of the County with respect to the proposal and award process. This prohibition shall apply to any amendment, extension, or evaluation process once a Contract has been awarded.

Contractor shall immediately report any attempt by a County officer, employee, or agent to solicit (either directly or through an intermediary) improper consideration from Contractor. The report shall be made to the supervisor or manager charged with supervision of the employee or the

County Administrative Office. In the event of a termination under this provision, the County is entitled to pursue any available legal remedies.

**C.21 Informal Dispute Resolution**

In the event the County determines that service is unsatisfactory, or in the event of any other dispute, claim, question, or disagreement arising from or relating to the Contract or breach thereof, the parties hereto shall use their best efforts to settle the dispute, claim, question, or disagreement. To this effect, they shall consult and negotiate with each other in good faith and, recognizing their mutual interests, attempt to reach a just and equitable solution satisfactory to both parties.

**C.22 Legality and Severability**

The parties' actions under the Contract shall comply with all applicable laws, rules, regulations, court orders, and governmental agency orders. The provisions of the Contract are specifically made severable. If a provision of the Contract is terminated or held to be invalid, illegal, or unenforceable, the validity, legality, and enforceability of the remaining provisions shall remain in full effect.

**C.23 Licenses, Permits and/or Certifications**

Contractor shall ensure that it has all necessary licenses, permits, and/or certifications required by federal, state, County, and municipal laws, ordinances, rules, and regulations. The Contractor shall maintain these licenses, permits, and/or certifications in effect for the duration of the Contract. Contractor will notify County immediately of loss or suspension of any such licenses, permits, and/or certifications. Failure to maintain required licenses, permits, and/or certifications may result in immediate termination of the Contract.

**C.24 Material Misstatement/Misrepresentation**

If, during the course of the administration of the Contract, the County determines that Contractor has made a material misstatement or misrepresentation or that materially inaccurate information has been provided to the County, the Contract may be immediately terminated. If the Contract is terminated according to this provision, the County is entitled to pursue any available legal remedies.

**C.25 Mutual Covenants**

The parties to the Contract mutually covenant to perform all of their obligations hereunder, to exercise all discretion and rights granted hereunder, and to give all consents in a reasonable manner consistent with the standards of "good faith" and "fair dealing."

**C.26 Nondisclosure**

Contractor shall hold as confidential and use reasonable care to prevent unauthorized access by, storage, disclosure, publication, dissemination to and/or use by third parties of, confidential information that is either: (1) provided by the County to Contractor or an agent of Contractor or otherwise made available to Contractor or Contractor's agent in connection with the Contract; or, (2) acquired, obtained, or learned by Contractor or an agent of Contractor in the performance of this Contract. For purposes of this provision, confidential information means any data, files, software, information, or materials in oral, electronic, tangible, or intangible form, and however stored, compiled, or memorialized, and includes, but is not limited to, technology infrastructure, architecture, financial data, trade secrets, equipment specifications, user lists, passwords, research data, and technology data.

**C.27 Notice of Delays**

Except as otherwise provided herein, when either party has knowledge that any actual or potential situation is delaying or threatens to delay the timely performance of the Contract, that party shall, within twenty-four (24) hours, give notice thereof, including all relevant information with respect thereto, to the other party.

**C.28 Ownership of Documents**

All documents, data, products, graphics, computer programs and reports prepared by Contractor pursuant to the Contract shall be considered property of the County upon payment for services (and products, if applicable). All such items shall be delivered to County at the completion of work under the Contract. Unless otherwise directed by County, Contractor may retain copies of such items.

**C.29 Participation Clause**

The County desires that Municipalities, School Districts, and other Tax Districts within San Bernardino County requiring the same Services provided herein may, at their option and through the County Purchasing agent, avail themselves of the Contract. Upon notice, in writing, the Contractor agrees to the extension of the terms of a resultant contract with such governmental bodies as though they have been expressly identified in this bid, with the provisions that:

**C.29.1** Such governmental body does not have and will not have in force any other contract for like purchases.

**C.29.2** Such governmental body does not have under consideration for award any other bids or quotations for like purchases.

Such governmental body shall make purchases directly through and to the Contractor. The County will not be liable for any such purchase made between the Contractor and another governmental body who avail themselves of this Contract.

**C.30 Air, Water Pollution Control, Safety and Health**

Contractor shall comply with all air pollution control, water pollution, safety and health ordinances and statutes, which apply to the work performed pursuant to the Contract.

**C.31 Records**

Contractor shall maintain all records and books pertaining to the delivery of Services under the Contract and demonstrate accountability for contract performance. All records shall be complete and current and comply with all Contract requirements. Failure to maintain acceptable records shall be considered grounds for withholding of payments for invoices submitted and/or termination of the Contract.

All records relating to the Contractor's personnel, consultants, subcontractors, Services/Scope of Work, and expenses pertaining to the Contract shall be kept in a generally acceptable accounting format. Records should include primary source documents. Fiscal records shall be kept in accordance with Generally Accepted Accounting Principles and must account for all funds, tangible assets, revenue, and expenditures. Fiscal records must comply with the appropriate Office of Management and Budget (OMB) Circulars, which state the administrative requirements, cost principles and other standards for accountancy.

**C.32 Relationship of the Parties**

Nothing contained in the Contract shall be construed as creating a joint venture, partnership, or employment arrangement between the Parties hereto, nor shall either Party have the right, power, or authority to create an obligation or duty, expressed or implied, on behalf of the other Party hereto.

**C.33 Release of Information**

No news releases, advertisements, public announcements, or photographs arising out of the Contract or Contractor's relationship with County may be made or used without prior written approval of the County.

**C.34 Representation of the County**

In the performance of the Contract, Contractor, its agents, and employees, shall act in an independent capacity and not as officers, employees, or agents of the County.

**C.35 Strict Performance**

Failure by a party to insist upon the strict performance of any of the provisions of the Contract by the other party, or the failure by a party to exercise its rights upon the default of the other party, shall not constitute a waiver of such party's right to insist and demand strict compliance by the other party with the terms of the Contract thereafter.

**C.36 Subcontracting**

Contractor shall obtain County's written consent, which County may withhold in its sole discretion, before entering into Contracts with or otherwise engaging any subcontractors who may supply any part of the Services to County. At County's request, Contractor shall provide information regarding the subcontractor's qualifications and a listing of a subcontractor's key personnel including, if requested by the County, resumes of proposed subcontractor personnel. Contractor shall remain directly responsible to County for its subcontractors and shall indemnify County for the actions or omissions of its subcontractors under the terms and conditions specified in Section G. All approved subcontractors shall be subject to the provisions of the Contract applicable to Contractor Personnel.

For any subcontractor, Contractor shall:

- C.36.1** Be responsible for subcontractor compliance with the Contract and the subcontract terms and conditions; and
- C.36.2** Ensure that the subcontractor follows County's reporting formats and procedures as specified by County.
- C.36.3** Include in the subcontractor's subcontract substantially similar terms as are provided in Sections B. Contractor Responsibilities, C. General Contract Requirements, and G. Indemnification and Insurance Requirements.

Upon expiration or termination of the Contract for any reason, County will have the right to enter into direct Contracts with any of the Subcontractors. Contractor agrees that its arrangements with Subcontractors will not prohibit or restrict such Subcontractors from entering into direct Contracts with County.

**C.37 Subpoena**

In the event that a subpoena or other legal process commenced by a third party in any way concerning the goods or Services provided under the Contract is served upon Contractor or County, such party agrees to notify the other party in the most expeditious fashion possible following receipt of such subpoena or other legal process. Contractor and County further agree to cooperate with the other party in any lawful effort by such other party to contest the legal validity of such subpoena or other legal process commenced by a third party as may be reasonably required and at the expense of the party to whom the legal process is directed, except as otherwise provided herein in connection with defense obligations by Contractor for County.

**C.38 Termination for Convenience**

The County reserves the right to terminate the Contract, for its convenience, with or without cause, with a thirty (30) day written notice of termination. Such termination may include all or part of the Services described herein. Upon such termination, payment will be made to the Contractor for Services rendered and expenses reasonably incurred prior to the effective date of termination. Upon receipt of a termination notice, Contractor shall promptly discontinue Services unless the notice directs otherwise. Contractor shall deliver promptly to County and transfer title (if necessary) to all completed work, and work in progress, including drafts, documents, plans, forms, data, products, graphics, computer programs, and reports.

**C.39 Time of the Essence**

Time is of the essence in the performance of the Contract and of each of its provisions.

**C.40 Venue**

The parties acknowledge and agree that the Contract was entered into and intended to be performed in San Bernardino County, California. The parties agree that the venue of any action or claim brought by any party to the Contract will be the Superior Court of California, San Bernardino County, San Bernardino District. Each party hereby waives any law or rule of the court that would allow them to request or demand a change of venue. If any action or claim concerning the Contract is brought by any third party and filed in another venue, the parties hereto agree to use their best efforts to obtain a change of venue to the Superior Court of California, San Bernardino County, San Bernardino District.

**C.41 Conflict of Interest**

Contractor shall make all reasonable efforts to ensure that no conflict of interest exists between its officers, employees, or subcontractors and the County. Contractor shall make a reasonable effort to prevent employees, Contractor, or members of governing bodies from using their positions for purposes that are, or give the appearance of being, motivated by a desire for private gain for themselves or others such as those with whom they have family business, or other ties. Officers, employees, and agents of cities, counties, districts, and other local agencies are subject to applicable conflict of interest codes and state law. In the event the County determines a conflict of interest situation exists, any increase in costs, associated with the conflict of interest situation, may be disallowed by the County, and such conflict may constitute grounds for termination of the Contract. This provision shall not be construed to prohibit employment of persons with whom Contractor's officers, employees, or agents have family, business, or other ties so long as the employment of such persons does not result in increased costs over those associated with the employment of any other equally qualified applicant.

**C.42 Former County Administrative Officials**

Contractor agrees to provide, or has already provided, information on former San Bernardino County administrative officials (as defined below) who are employed by or represent Contractor. The information provided includes a list of former County administrative officials who terminated County employment within the last five years and who are now officers, principals, partners, associates, or members of the business. The information also includes the employment with or representation of Contractor. For purposes of this provision, "County administrative official" is defined as a member of the Board of Supervisors or such officer's staff, County Executive Officer or member of such officer's staff, County department or group head, assistant department or group head, or any employee in the Exempt Group, Management Unit, or Safety Management Unit.

**C.43 Disclosure of Criminal and Civil Procedures**

The County reserves the right to request the information described herein from the Contractor. Failure to provide the information may result in a termination of the Contract. The County also reserves the right to obtain the requested information by way of a background check performed by an investigative firm. The Contractor also may be requested to provide information to clarify initial responses. Negative information discovered may result in Contract termination.

Contractor is required to disclose whether the firm, or any of its partners, principals, members, associates or key employees (as that term is defined herein), within the last ten years, has been indicted on or had charges brought against it or them (if still pending) or convicted of any crime or offense arising directly or indirectly from the conduct of the firm's business, or whether the firm, or any of its partners, principals, members, associates or key employees, has within the last ten years, been indicted on or had charges brought against it or them (if still pending) or convicted of any crime or offense involving financial misconduct or fraud. If the response is affirmative, the Contractor will be asked to describe any such indictments or charges (and the status thereof), convictions and the surrounding circumstances in detail.

In addition, the Contractor is required to disclose whether the firm, or any of its partners, principals, members, associates, or key employees, within the last ten years, has been the subject of legal proceedings as defined herein arising directly from the provision of Services by the firm or those individuals. "Legal proceedings" means any civil actions filed in a court of competent jurisdiction, or any matters filed by an administrative or regulatory body with jurisdiction over the firm or the individuals. If the response is affirmative, the Contractor will be asked to describe any such legal proceedings (and the status and disposition thereof) and the surrounding circumstances in detail.

For purposes of this provision "key employees" includes any individuals providing direct service to the County. "Key employees" do not include clerical personnel providing service at the firm's offices or locations.

**C.44 Copyright**

County shall have a royalty-free, non-exclusive and irrevocable license to publish, disclose, copy, translate, and otherwise use, copyright or patent, now and hereafter, all reports, studies, information, data, statistics, forms, designs, plans, procedures, systems, and any other materials or properties developed under this Contract including those covered by copyright, and reserves the right to authorize others to use or reproduce such material. All such materials developed under the terms of this Contract shall acknowledge the San Bernardino County as the funding agency and Contractor as the creator of the publication. No such materials or properties produced in whole or in part under this Contract shall be subject to private use, copyright, or patent right by Contractor in the United States or in any other country without the express written consent of County. Copies of all educational and training materials, curricula, audio/visual aids, printer material, and periodicals, assembled pursuant to this Contract must be filed with the County prior to publication. To the extent this Contract is federally funded, Contractor shall provide any information necessary to the County in order to comply with Federal Acquisition Regulation 52.227-15. To the extent applicable, the provisions of Federal Acquisition Regulation 52.227-14 Rights in Data - General shall apply.

**C.45 Artwork, Proofs and Negatives**

All artwork, proofs, and/or negatives in either print or digital format for anything produced under the terms of the Contract are the property of the County. These items must be returned to the County within ten (10) calendar days, upon written notification to the Contractor. In the event Contractor fails to return the documents, the County is entitled to pursue any available legal remedies. In addition, the Contractor will be barred from all future solicitations for a period of at least six (6) months.

**C.46 Iran Contracting Act**

IRAN CONTRACTING ACT OF 2010, Public Contract Code section 2200 et seq. (Applicable for all Contracts of one million dollars (\$1,000,000) or more). In accordance with Public Contract Code section 2204, subdivision (a), the Contractor certifies that at the time the Contract is signed, the Contractor signing the Contract is not identified on a list created pursuant to subdivision (b) of Public Contract Code section 2203 as a person (as defined in Pub. Contract Code, § 2202, subd. (e)) engaging in investment activities in Iran described in subdivision (a) of Public Contract Code section 2202.5, or as a person described in subdivision (b) of Public Contract Code section 2202.5, as applicable.

Contractors are cautioned that making a false certification may subject the Contractor to civil penalties, termination of existing contract, and ineligibility to bid on a contract for a period of three (3) years in accordance with Public Contract Code section 2205.

**C.47 Reserved**

**C.48 California Consumer Privacy Act**

To the extent applicable, if Contractor is a business that collects the personal information of a consumer(s) in performing Services pursuant to the Contract, Contractor must comply with the provisions of the California Consumer Privacy Act (CCPA). (Civ. Code, § 1798.100 et seq.) For purposes of this provision, “business,” “consumer,” and “personal information” shall have the same meanings as set forth at Civil Code section 1798.140. Contractor must contact the County immediately upon receipt of any request by a consumer submitted pursuant to the CCPA that requires any action on the part of the County, including but not limited to, providing a list of disclosures or deleting personal information. Contractor must not sell, market, or otherwise disclose personal information of a consumer provided by the County unless specifically authorized pursuant to the terms of the Contract. Contractor must immediately provide to the County any notice provided by a consumer to Contractor pursuant to Civil Code section 1798.150, subdivision (b), alleging a violation of the CCPA, that involves personal information received or maintained pursuant to the Contract. Contractor must immediately notify the County if it receives a notice of violation from the California Attorney General pursuant to Civil Code section 1798.155, subdivision (b).

**C.49 Reserved**

**C.50 Levine Act – Campaign Contribution Disclosure (formerly referred to as Senate Bill 1439)**

Contractor has disclosed to the County using Attachment C – Levine Act – Campaign Contribution Disclosure (formerly referred to as Senate Bill 1439), attached hereto and incorporated herein by this reference, whether it has made any campaign contributions of more than \$500 to any member of the Board of Supervisors or other County elected officer [Sheriff, Assessor-Recorder-Clerk, Auditor-Controller/Treasurer/Tax Collector and the District Attorney] within the earlier of: (1) the date of the submission of Contractor’s proposal to the County, or (2) 12 months before the date the Contract was approved by the Board of Supervisors. Contractor acknowledges that under Government Code section 84308, Contractor is prohibited from making campaign contributions of more than \$500 to any member of the Board of Supervisors or other County elected officer for 12 months after the County’s consideration of the Contract.

In the event of a proposed amendment to the Contract, the Contractor will provide the County a written statement disclosing any campaign contribution(s) of more than \$500 to any member of the Board of Supervisors or other County elected officer within the preceding 12 months of the date of the proposed amendment.

Campaign contributions include those made by any agent/person/entity on behalf of the Contractor or by a parent, subsidiary, or otherwise related business entity of Contractor

**C.51 Reserved**

**C.52 Reserved**

**C.53 Prohibition on Contracting with Entities that Require Certain Internal Confidentiality Agreements or Statements-Representation (FAR 52.203-18).**

In compliance with Federal Acquisition Regulation 52.203-18, Contractor shall not require employees or subcontractors of Contractor seeking to report waste, fraud, or abuse, to sign internal confidentiality agreements or statement prohibiting or otherwise restricting such employees or subcontractors from lawfully reporting such waste, fraud or abuse to a designated investigative or law enforcement representative of a Federal department or agency authorized to receive such information. To the extent Contractor has required employees or subcontractors to sign internal confidentiality agreements or statements in the past, Contractor shall notify current employees and subcontractors that those prohibitions and restrictions are no longer in effect. Contractor shall include this clause in all subcontracts.

**C.54 Use of Biobased Products (FAR 52.223-1)**

Contractor certifies that to the extent biobased products are purchased using Contract funds, Contractor shall comply with Federal Acquisition Regulation 52.223-1.

**C.55 Service Contract Labor Standards (FAR 52.222-52, 52.222-53, 22.1003-4)**

To the extent applicable, Contractor agrees to comply with and to provide any information necessary for the County to comply with Federal Acquisition Regulations 52.222-52, 52.222-53, and 22.1003-4.

**C.56 Reserved**

**D. TERM OF CONTRACT**

The Contract is effective as of July 1, 2026, and expires June 30, 2029, and may be extended for one (1) additional two-year period, or two (2) additional one-year periods, upon written agreement by the County and the Contractor, but may be terminated earlier in accordance with provisions of this Contract.

**E. Reserved**

**F. FISCAL PROVISIONS**

**F.1** This is one of several Contracts the County has entered into for identical Services to which an aggregate maximum of \$9,000,000, divided amongst the applicable Contracts, applies. It is, therefore, understood by Contractor that the payment for Services will be only a fraction of this aggregate maximum amount, in accordance with the applicable scope of work and Attachments A and B. This Contract may be federally funded and shall be subject to availability of other funds to the County. The consideration to be paid to Contractor, as provided herein, shall be in full payment for all Contractor's Services and expenses incurred in the performance hereof, including travel and per diem.

**F.2** Contractor shall provide County itemized invoices, one per vehicle with Vehicle Identification Number included, in arrears, and in a format acceptable to the County for Services performed under the Contract, based on the rates listed in Attachment A – Cost – Equipment, Parts, and Accessories, and Attachment B – Cost – Equipment, Parts, and Accessories Installation and Removal Services, within twenty (20) days of the end of the previous month. Invoices shall be issued with a net sixty (60) day payment term with the corresponding PO and/or Contract number stated on the invoices. County reserves the right to audit invoices submitted by Contractor. County shall make payment to Contractor within sixty (60) calendar days after receipt of invoice or the resolution of any billing dispute. All invoices shall be sent to the County via one of the following methods:

- Email invoices to: BOFA-ACCOUNTSPAYABLE@SBCSD.ORG
- Mail invoices to: San Bernardino County Sheriff's Department  
Attn: Bureau of Administration – Accounts Payable  
655 East Third Street  
San Bernardino, CA 92415

**F.3** Contractor shall accept all payments from County via electronic funds transfer (EFT) directly deposited into the Contractor's designated checking or other bank account. Contractor shall promptly comply with directions and accurately complete forms provided by County required to process EFT payments.

**F.4** County is exempt from federal excise taxes and no payment shall be made for any personal property taxes levied on Contractor or on any taxes levied on employee wages. The County shall only pay for any state or local sales or use taxes on the Services rendered or equipment and/or parts supplied to the County pursuant to the Contract.

- F.5 Costs for Services under the terms of the Contract shall be incurred during the contract period except as approved by County. Contractor shall not use current year funds to pay prior or future year obligations.
- F.6 Funds made available under the Contract shall not supplant any federal, state or any governmental funds intended for Services of the same nature as the Contract. Contractor shall not claim reimbursement or payment from County for, or apply sums received from County with respect to that portion of its obligations that have been paid by another source of revenue. Contractor agrees that it will not use funds received pursuant to the Contract, either directly or indirectly, as a contribution or compensation for purposes of obtaining funds from another revenue source without prior written approval of the County.
- F.7 Reserved

**G. INDEMNIFICATION AND INSURANCE REQUIREMENTS**

**G.1 Indemnification**

The Contractor agrees to indemnify, defend (with counsel reasonably approved by County) and hold harmless the County and its authorized officers, employees, agents and volunteers (Indemnitees) from any and all claims, actions, losses, damages and/or liability arising out of the Contract from any cause whatsoever, including the acts, errors or omissions of any person and for any costs or expenses incurred by the County on account of any claim except where such indemnification is prohibited by law. This indemnification provision shall apply regardless of the existence or degree of fault of Indemnitees. The Contractor indemnification obligation applies to the County's "active" as well as "passive" negligence, but does not apply to the County's "sole negligence" or "willful misconduct" within the meaning of Civil Code section 2782.

**G.2 Additional Insured**

All policies, except for Worker's Compensation, Errors and Omissions and Professional Liability policies shall contain additional endorsements naming the County and its officers, employees, agents, and volunteers as additional named insured with respect to liabilities arising out of the performance of Services hereunder. The additional insured endorsements shall not limit the scope of coverage for the County to vicarious liability but shall allow coverage for the County to the full extent provided by the policy. Such additional insured coverage shall be at least as broad as Additional Insured (Form B) endorsement form ISO, CG 2010.11 85.

**G.3 Waiver of Subrogation Rights**

Contractor shall require the carriers of required coverages to waive all rights of subrogation against the County, its officers, employees, agents, volunteers, Contractors, and Subcontractors. All general or auto liability insurance coverage provided shall not prohibit the Contractor and Contractor's employees or agents from waiving the right of subrogation prior to a loss or claim. The Contractor hereby waives all rights of subrogation against the County.

**G.4 Policies Primary and Non-Contributory**

All policies required herein are to be primary and non-contributory with any insurance or self-insurance programs carried or administered by the County.

**G.5 Severability of Interests**

Contractor agrees to ensure that coverage provided to meet these requirements is applicable separately to each insured, and there will be no cross-liability exclusions that preclude coverage for suits between the Contractor and the County or between the County and any other insured or additional insured under the policy.

**G.6 Proof of Coverage**

Contractor shall furnish Certificates of Insurance to the County Department administering the Contract evidencing the insurance coverage at the time the Contract is executed, additional endorsements, as required shall be provided prior to the commencement of performance of

Services hereunder, which certificates shall provide that such insurance shall not be terminated or expire without thirty (30) days written notice to the Department, and Contractor shall maintain such insurance from the time Contractor commences performance of Services hereunder until the completion of such Services. Within fifteen (15) days of the commencement of the Contract, Contractor shall furnish a copy of the Declaration page for all applicable policies and will provide complete certified copies of the policies and endorsements immediately upon request.

**G.7 Acceptability of Insurance Carrier**

Unless otherwise approved by Risk Management, insurance shall be written by insurers authorized to do business in the State of California and with a minimum “Best” Insurance Guide rating of “A- VII.”

**G.8 Deductibles and Self-Insured Retention**

Any and all deductibles or self-insured retentions in excess of \$10,000 shall be declared to and approved by Risk Management.

**G.9 Failure to Procure Coverage**

In the event that any policy of insurance required under the Contract does not comply with the requirements, is not procured, or is canceled and not replaced, the County has the right but not the obligation or duty to cancel the Contract or obtain insurance if it deems necessary and any premiums paid by the County will be promptly reimbursed by the Contractor or County payments to the Contractor will be reduced to pay for County purchased insurance.

**G.10 Insurance Review**

Insurance requirements are subject to periodic review by the County. The Director of Risk Management or designee is authorized, but not required, to reduce, waive, or suspend any insurance requirements whenever Risk Management determines that any of the required insurance is not available, is unreasonably priced, or is not needed to protect the interests of the County. In addition, if the Department of Risk Management determines that heretofore unreasonably priced or unavailable types of insurance coverage or coverage limits become reasonably priced or available, the Director of Risk Management or designee is authorized, but not required, to change the above insurance requirements to require additional types of insurance coverage or higher coverage limits, provided that any such change is reasonable in light of past claims against the County, inflation, or any other item reasonably related to the County’s risk.

Any change requiring additional types of insurance coverage or higher coverage limits must be made by amendment to the Contract. Contractor agrees to execute any such amendment within thirty (30) days of receipt.

Any failure, actual or alleged, on the part of the County to monitor or enforce compliance with any of the insurance and indemnification requirements will not be deemed as a waiver of any rights on the part of the County.

**G.11 Insurance Specifications**

Contractor agrees to provide insurance set forth in accordance with the requirements herein. If Contractor uses existing coverage to comply with these requirements and that coverage does not meet the specified requirements, the Contractor agrees to amend, supplement, or endorse the existing coverage to do so.

Without in any way affecting the indemnity herein provided and in addition thereto, the Contractor shall secure and maintain throughout the contract term the following types of insurance with limits as shown:

**G.11.1** Workers’ Compensation/Employer’s Liability – A program of Workers’ Compensation insurance or a state-approved, self-insurance program in an amount and form to meet all applicable requirements of the Labor Code of the State of California, including

Employer's Liability with \$250,000 limits covering all persons including volunteers providing Services on behalf of the Contractor and all risks to such persons under the Contract.

If Contractor has no employees, it may certify or warrant to the County that it does not currently have any employees or individuals who are defined as "employees" under the Labor Code and the requirement for Workers' Compensation coverage will be waived by the County's Director of Risk Management.

With respect to Contractors that are non-profit corporations organized under California or federal law, volunteers for such entities are required to be covered by Workers' Compensation insurance.

**G.11.2** Commercial/General Liability Insurance – Contractor shall carry General Liability Insurance covering all operations performed by or on behalf of the Contractor providing coverage for bodily injury and property damage with a combined single limit of not less than one million dollars (\$1,000,000), per occurrence. The policy coverage shall include:

- a. Premises operations and mobile equipment.
- b. Products and completed operations.
- c. Broad form property damage (including completed operations).
- d. Explosion, collapse, and underground hazards.
- e. Personal injury.
- f. Contractual liability.
- g. \$2,000,000 general aggregate limit.

**G.11.3** Automobile Liability Insurance – Primary insurance coverage shall be written on ISO Business Auto coverage form for all owned, hired, and non-owned automobiles or symbol 1 (any auto). The policy shall have a combined single limit of not less than one million dollars (\$1,000,000) for bodily injury and property damage per occurrence.

If the Contractor is transporting one or more non-employee passengers in performance of Contract Services, the automobile liability policy shall have a combined single limit of two million dollars (\$2,000,000) for bodily injury and property damage per occurrence.

If the Contractor owns no autos, a non-owned auto endorsement to the General Liability policy described above is acceptable.

**G.11.4** Umbrella Liability Insurance – An umbrella (over primary) or excess policy may be used to comply with limits or other primary coverage requirements. When used, the umbrella policy shall apply to bodily injury/property damage, personal injury/advertising injury and shall include a "dropdown" provision providing primary coverage for any liability not covered by the primary policy. The coverage shall also apply to automobile liability.

**G.11.5** Professional Liability – Professional Liability Insurance with limits of not less than one million (\$1,000,000) per claim and two million (\$2,000,000) aggregate limits

or

Errors and Omissions Liability Insurance – Errors and Omissions Liability Insurance with limits of not less than one million (\$1,000,000) and two million (\$2,000,000) aggregate limits

If insurance coverage is provided on a “claims made” policy, the “retroactive date” shall be shown and must be before the date of the start of the Contract work. The claims made insurance shall be maintained or “tail” coverage provided for a minimum of five (5) years after Contract completion.

**G.11.6 Reserved**

**G.11.7 Reserved**

**G.11.8 Reserved**

**H. RIGHT TO MONITOR AND AUDIT**

**H.1** The County, state, and federal government shall have the absolute right to review and audit all records, books, papers, documents, corporate minutes, and other pertinent items as requested, and shall have the absolute right to monitor the performance of Contractor in the delivery of services provided under this Contract. Contractor shall give full cooperation in any auditing or monitoring conducted. Contractor shall cooperate with the County in the implementation, monitoring, and evaluation of this Contract and comply with any and all reporting requirements established by the County.

**H.2** All records pertaining to services delivered and all fiscal, statistical, and management books and records shall be available for examination and audit by County representatives for a period of three years after final payment under this Contract or until all pending County, state, and federal audits are completed, whichever is later.

**I. CORRECTION OF PERFORMANCE DEFICIENCIES**

**I.1** Failure by Contractor to comply with any of the provisions, covenants, requirements, or conditions of the Contract shall be a material breach of the Contract.

**I.2** In the event of a non-cured breach, County may, at its sole discretion and in addition to any other remedies available at law, in equity, or otherwise specified in the Contract:

- a. Afford Contractor thereafter a time period within which to cure the breach, which period shall be established at the sole discretion of County; and/or
- b. Discontinue reimbursement to Contractor for and during the period in which Contractor is in breach, which reimbursement shall not be entitled to later recovery; and/or
- c. Withhold funds pending the duration of the breach; and/or
- d. Offset against any monies billed by Contractor but yet unpaid by County, those monies disallowed pursuant to Item “b” of this paragraph; and/or
- e. Terminate the Contract immediately and be relieved of the payment of any consideration to Contractor. In the event of such termination, the County may proceed with the work in any manner deemed proper by the County. The cost to the County shall be deducted from any sum due to the Contractor under the Contract and the balance, if any, shall be paid by the Contractor upon demand.

**J. NOTICES**

All written notices provided for in the Contract or which either party desires to give to the other shall be deemed fully given, when made in writing and either served personally, by facsimile, or deposited in the United States mail, postage prepaid, and addressed to the other party as follows:

San Bernardino County  
Sheriff/Coroner/Public Administrator  
Attn: Bureau of Administration – Contracts &  
Procurement  
655 East Third Street  
San Bernardino, CA 92415

West Coast Lights & Sirens  
601 Columbia Avenue, Units A & B  
Riverside, CA 92507

Notice shall be deemed communicated two (2) County working days from the time of mailing if mailed as provided in this paragraph.

**K. ENTIRE AGREEMENT**

This Contract, including all exhibits and other documents attached hereto and incorporated herein by reference, represents the final, complete, and exclusive agreement between the parties hereto. Any prior agreement, promises, negotiations, or representations relating to the subject matter of the Contract not expressly set forth herein are of no force or effect. This Contract is executed without reliance upon any promise, warranty, or representation by any party or any representative of any party other than those expressly contained herein. Each party has carefully read the Contract and signs the same of its own free will.

**L. ELECTRONIC SIGNATURES**

This Contract and, if applicable, any subsequent amendments, may be executed in any number of counterparts, each of which so executed shall be deemed to be an original, and such counterparts shall together constitute one and the same Contract. The parties shall be entitled to sign and transmit an electronic signature of this Contract (whether by facsimile, PDF, or other mail transmission), which signature shall be binding on the party whose name is contained therein. Each party providing an electronic signature agrees to promptly execute and deliver to the other party an original signed Agreement upon request.

**IN WITNESS WHEREOF**, San Bernardino County and the Contractor have each caused the Contract to be subscribed by its respective duly authorized officers, on its behalf.

SAN BERNARDINO COUNTY

►  
\_\_\_\_\_  
Dawn Rowe, Chair, Board of Supervisors

Dated: \_\_\_\_\_  
SIGNED AND CERTIFIED THAT A COPY OF THIS  
DOCUMENT HAS BEEN DELIVERED TO THE  
CHAIRMAN OF THE BOARD

Lynna Monell  
Clerk of the Board of Supervisors  
of San Bernardino County

By \_\_\_\_\_  
Deputy

West Coast Lights & Sirens

\_\_\_\_\_  
(Print or type name of corporation, company, contractor, etc.)

By ► \_\_\_\_\_  
(Authorized signature - sign in blue ink)

Name \_\_\_\_\_  
(Print or type name of person signing contract)

Title \_\_\_\_\_  
(Print or Type)

Dated: \_\_\_\_\_

Address 601 Columbia Avenue, Units A & B  
Riverside, CA 92507

**FOR COUNTY USE ONLY**

Approved as to Legal Form

►  
\_\_\_\_\_  
Grace B. Parsons, Deputy County Counsel

Date \_\_\_\_\_

Reviewed for Contract Compliance

►  
\_\_\_\_\_

Date \_\_\_\_\_

Reviewed/Approved by Department

►  
\_\_\_\_\_  
Carolina Mendoza, Chief Deputy Director of  
Sheriff's Administration

Date \_\_\_\_\_

## ATTACHMENT A – COST – EQUIPMENT, PARTS, AND ACCESSORIES

Line Item	Product	Manufacturer Part Number		Quantity	UOM	Per Unit Cost
1	Streamlight Stinger Charger 2020-2026 Ford PIU/Chevrolet Tahoe	75100	No Substitute	Varies	Each	\$30.13
2	Streamlight Stinger Charger Wiring Adapter 2020-2026 Ford PIU/Chevrolet Tahoe	22050	No Substitute	Varies	Each	\$14.93
3	Duratech White Dome Antenna 2020-2026 Ford PIU/Chevrolet Tahoe	DM-W15- 3C2CWHT-180	No Substitute	Varies	Each	\$111.36
4	Mobile Mark Wide Band Antenna 698-3000 MHZ Black Open Spring 2020-2026 Ford PIU/Chevrolet Tahoe	A15WB698BS	No Substitute	Varies	Each	\$72.36
5	PC Tel Cable Antenna 2020-2026 Ford PIU/Chevrolet Tahoe	HAF40164A	No Substitute	Varies	Each	\$31.00
6	PC Tel Cable 2020-2026 Ford PIU/Chevrolet Tahoe	EXP-CV16NMO- 12-204-s	No Substitute	Varies	Each	\$48.49
7	Nova Strobe Pre-Emption Opticom 2020-2026 Ford PIU/Chevrolet Tahoe	MDASHCPE	No Substitute	Varies	Each	\$390.00
8	Getac Power Supply 120W DC-DC VEHICLE ADAPTER	GAD2X8	No Substitute	Varies	Each	\$109.39
9	Stico 700/800 MHZ Undercover Antenna 2020-2026 Chevrolet Malibu, Equinox	CCAS-SB-7-800	No Substitute	Varies	Each	\$132.48
10	Golight® SL Remote Control Spotlight, Driver Side, Dash Control included 2020-2026 Ford PIU/Chevrolet Tahoe/Dodge Durango Patrol	EWL9111SL	No Substitute	Varies	Each	\$1,057.80
11	Golight® SL Remote Control Spotlight, Passenger Side, Dash Control sold separately 2020-2026 Ford PIU/Chevrolet Tahoe/Dodge Durango Patrol	EWL9114SL	No Substitute	Varies	Each	\$912.60
12	Golight® SL Dash Control Harness, use with bluePRINT® 500 Series Siren 2020-2026 Ford PIU/Chevrolet Tahoe/Dodge Durango Patrol	PWLHN004	No Substitute	Varies	Each	\$13.20
13	Golight® SL Bracket, Passenger Side Mount on Chevrolet Tahoe 2020-2025	PWLBK004	No Substitute	Varies	Each	\$98.40

**ATTACHMENT A – COST – EQUIPMENT, PARTS, AND ACCESSORIES (continued)**

Line Item	Product	Manufacturer Part Number		Quantity	UOM	Per Unit Cost
14	Golight® SL Bracket, Driver Side Mount on Chevrolet Tahoe 2020-2025	PWLBK003	No Substitute	Varies	Each	\$98.40
15	Setina Window Barrier VS Steel Vertical 2020-2026 PI SUV	WK0514ITU20	No Substitute	Varies	Each	\$234.91
16	Setina #6/7 XL Coated Poly Partition Tall Man 2020-2026 PI SUV	PK1126ITU20TM	No Substitute	Varies	Each	\$820.39
17	Setina Window Barrier VS Steel Vertical 18-20 Expedition/EXPD Max	WK0514EPD18	No Substitute	Varies	Each	\$234.91
18	Setina Door Panel VS Aluminum 18-20 Expedition/Expedition Max	DK0598EPD18	No Substitute	Varies	Each	\$177.74
19	Setina #6/7 XL Coated Poly Partition 18-20 Expedition/Expedition Max	PK1152EPD18	No Substitute	Varies	Each	\$820.34
20	Setina 450LR4 Aluminum Full 2018-20 Expedition	BK1558EPD18	No Substitute	Varies	Each	\$368.31
21	American Aluminum Accessories EZ Rider K9 Platform Unit for 2020 PI SUV Include Rubber Mat, Matte Black Powder Coating, Mill Finish Aluminum for Easy Cleaning Surface, Red and White LED Light Kit	EXPF-PISUV20_AA or AA-K9-10-1571	No Substitute	Varies	Each	\$3,283.20
22	American Aluminum Accessories EZ Cool Guard System Plus Only Without Rescue Door Opener 2020-2026 Ford Expedition/2020-2026 Chevrolet Tahoe	ELECOOLGUARDP LUS_AA or AA-K9-04-008	No Substitute	Varies	Each	\$2,134.80
23	American Aluminum Accessories EZ Cool Guard Pager System Includes a Glass Mounted Antenna 2020-2026 Ford Expedition/2020-2026 Chevrolet Tahoe	ELECTRIC-COOLGUARD or SA-10458	No Substitute	Varies	Each	\$543.60
24	Setina 2 <sup>nd</sup> Expanded Metal Partition 2020-2026 Ford Expedition	PK0123EPD182ND	No Substitute	Varies	Each	\$470.53
25	Havis 30" Console Vehicle Specific 2018-2020 Expedition – Includes Face Plates	C-VS-3000-EXPD-1	No Substitute	Varies	Each	\$628.56
26	Havis Self-Adjusting Double Cup Holder 2020-2026 Ford Expedition	CUP2-1001	No Substitute	Varies	Each	\$47.30
27	Havis Pole, Tele, HDM, SDMT, 8.5H 2020-2026 Ford Expedition	C-HDM-214	No Substitute	Varies	Each	\$127.00

**ATTACHMENT A – COST – EQUIPMENT, PARTS, AND ACCESSORIES (continued)**

Line Item	Product	Manufacturer Part Number		Quantity	UOM	Per Unit Cost
28	Havis Monitor/Keyboard Combo Mount for Front Release for Swivel 2020-2026 Ford Expedition	C-MD-312 or C-MD-317	No Substitute	Varies	Each	\$344.74
29	Havis Rugged Keyboard Mount and Adapter Combination Multiple Vehicles	C-KBM-202	No Substitute	Varies	Each	\$117.30
30	Havis 2 Lighter Plug Outlet w/1 USB Cut Outs 2020-2026 Ford Expedition	C-LP2-USB-BL2	No Substitute	Varies	Each	\$113.40
31	Havis 24" 2020 PI SUV Specific Flat Console with Face Plate	C-VS-0618-INUT	No Substitute	Varies	Each	\$436.10
32	Havis Self-Adjusting Double Cup Holder 2020-2026 Ford PIU	CUP2-1001	No Substitute	Varies	Each	\$47.30
33	Havis Action Adapters, Tilt/Swivel, 1.38" High Multiple Vehicles	C-MD-204	No Substitute	Varies	Each	\$64.20
34	Havis Keyboard Side Mount, Compact Multiple Vehicles	MD-ARM-0603-L	No Substitute	Varies	Each	\$139.30
35	Havis Rugged Keyboard Mount and Adapter Combination Multiple Vehicles	C-KBM-202	No Substitute	Varies	Each	\$117.30
36	Setina Expanded Metal W/Replacement Seat 2020-2026 Ford PIU	QK0635ITU20	No Substitute	Varies	Each	\$1,248.79
37	Havis Docking Station with Triple Pass Thru for GTAC V110 with Power Supply Multiple Vehicles	DS-GTC-312-3	No Substitute	Varies	Each	\$818.40
38	Setina Dual Gun Vault 2020-2026 Ford PIU/Chevrolet Tahoe/Dodge Durango Patrol	GC12221S1U	No Substitute	Varies	Each	\$563.35
39	Gamber Johnson Center Console 2020-2026 Ford PIU	2020FORDSUVKIT	No Substitute	Varies	Each	\$1,500.00
40	Setina Light Ready PB 450LR4 2021-2026 Tahoe	BK1558TAH25	No Substitute	Varies	Each	\$441.97
41	Troy Products 2020 PI Utility 17" Low Profile Console, 8" Slope, 9" Level	CC-20-UVLP-17	No Substitute	Varies	Each	\$375.72
42	Troy Products 2020 PI Utility In-Dash Computer Mount for Tablet Dock Stations	CM-20-UVDM	No Substitute	Varies	Each	\$326.27
43	Troy Products Side Console Keyboard Mount with Swing Arm 2020-2026 Ford PIU	CM-SDKB-IKEY OR TG3T	No Substitute	Varies	Each	\$415.56
44	Troy Products 6" Combo Faceplate for Motorola XTL2500/Federal Platinum 2020-2026 Ford PIU	FP-MXTL25-PLAT	No Substitute	Varies	Each	\$64.80

**ATTACHMENT A – COST – EQUIPMENT, PARTS, AND ACCESSORIES (continued)**

Line Item	Product	Manufacturer Part Number		Quantity	UOM	Per Unit Cost
45	Troy Products 4" Sunglass/Coin Tray 2020-2026 Ford PIU	FP-SGTRAY	No Substitute	Varies	Each	\$34.34
46	Troy Products 2" Faceplate with (2) DC Outlets & (1) Dual-Port USB Module 2020-2026 Ford PIU	FP-USB-2DC	No Substitute	Varies	Each	\$34.34
47	Troy Products 1" Blank Faceplate 2020-2026 Ford PIU	FP-BLNK1	No Substitute	Varies	Each	\$8.93
48	Troy Products 4" Internal Dual Beverage Holder 2020-2026 Ford PIU	AC-INBHG	No Substitute	Varies	Each	\$43.96
49	Magnetic Mic Microphone Adapter Multiple Vehicle Applications	17040	No Substitute	Varies	Each	\$32.02
50	Gamber Johnson 2021-2026 Chevy Tahoe Wide Body Console Box	7160-1566	No Substitute	Varies	Each	\$673.92
51	Santa Cruz Adjustable Gun Lock Timer Multiple Vehicle Applications	SC-7009A	No Substitute	Varies	Each	\$40.00
52	Setina Window Barrier 2021-2026 Tahoe	WK0514TAH21	No Substitute	Varies	Each	\$234.91
53	Setina 10XL Coated Poly Partition 21-26 Tahoe	PK1152TAH21	No Substitute	Varies	Each	\$820.39
54	Setina Replacement Seat/Rear Partition 2021-2026 Tahoe	QK2023TAH21	No Substitute	Varies	Each	\$1,363.03
55	Setina Door Panels 2021-2026 Tahoe	DK0100TAH21	No Substitute	Varies	Each	\$242.05
56	Setina Push Bumper PB 400 2020-2026 Ford Expedition	BK0534EPD18	No Substitute	Varies	Each	\$413.41
57	Setina Coated Poly Partition 2023-2026 Chevrolet Silverado	PK1152CHT191500	No Substitute	Varies	Each	\$820.39
58	Setina Window Barrier vs. Steel Vertical 2023-2026 Chevrolet Silverado	WK0514CHT191500	No Substitute	Varies	Each	\$234.91
59	Setina Door Panel 2023-2026 Chevrolet Silverado	DK0598CHT191500	No Substitute	Varies	Each	\$148.16
60	Setina Rear Window Barrier 2023-2026 Chevrolet Silverado	WK0055CHT191500	No Substitute	Varies	Each	\$184.93
61	Gamber Johnson Center Console-2023-2026 Silverado	7170-0579-01	No Substitute	Varies	Each	\$537.84
62	Setina Push Bumper 2023-2026 Silverado	BK0802CHT221500	No Substitute	Varies	Each	\$956.05
63	Setina XL Coated Poly Partition 2023 Ram 1500 Classic	PK0419DRT191500CCC	No Substitute	Varies	Each	\$820.39

**ATTACHMENT A – COST – EQUIPMENT, PARTS, AND ACCESSORIES (continued)**

<b>Line Item</b>	<b>Product</b>	<b>Manufacturer Part Number</b>		<b>Quantity</b>	<b>UOM</b>	<b>Per Unit Cost</b>
64	Setina Window Barrier VS. Steel Vertical 2023 Ram 1500	WK0514DRT191500CL	No Substitute	Varies	Each	\$234.91
65	Setina Door Panel 2023 Ram 1500 Classic	DK0598DRT191500CL	No Substitute	Varies	Each	\$177.79
66	Setina Rear Window Barrier 2023 Ram 1500 Classic	WK0055DRT191500CL	No Substitute	Varies	Each	\$184.93
67	Setina Aluminum Push Bumper W/O Tow Hooks 2023 Ram Classic	BK0534DRT191500CL	No Substitute	Varies	Each	\$413.41
68	Setina PIU SUV Cargo Tray Single Deck 2020-2026 Ford PIU	TK0249ITU20	No Substitute	Varies	Each	\$413.41
69	Setina PB Light Ready PB450LR4 2020-2026 Ford PIU	BK1558ITU20	No Substitute	Varies	Each	\$441.97
70	Westin Push Bumper With 2 Light Channel 2020-2026 Ford PIU	36-2125	No Substitute	Varies	Each	\$443.23
71	Setina Cargo Tray Single Deck 21-25 Tahoe	TK0249TAH21	No Substitute	Varies	Each	\$413.41
72	Troy Products Pistol Gun Safe W/Push Combo Lock Multiple Vehicle Applications	AC-GUNSAFE-2	No Substitute	Varies	Each	\$309.10
73	Troy Products Lidded Rifle Storage Box Multiple Vehicle Applications	CP-AR-37146-TL	No Substitute	Varies	Each	\$809.14
74	Troy Products Weapon Vault W1 Dimensions 40x X 32d X 12 H Multiple Vehicle Applications	CP-GB403212-LIP	No Substitute	Varies	Each	\$1,345.60
75	Federal Signal 51" Valor Light Bar 2020-2026 Ford PIU/Chevrolet Tahoe	VALR51J	No Substitute	Varies	Each	\$2,750.00
76	Federal Signal 2020 Expedition Light Bar Hook Kit	HKB-FRD15	No Substitute	Varies	Each	\$52.80
77	Federal Signal Dynamax 100W Siren Speaker 2020-2026 Ford PIU/Chevrolet Tahoe	ES100C	No Substitute	Varies	Each	\$216.00
78	Federal Signal Siren Speaker Bracket 2020-2026 Ford PIU/Chevrolet Tahoe	ESB-U	No Substitute	Varies	Each	\$28.60
79	Federal Signal Micro Pulse Ultra Blue/Amber 2020-2026 Ford PIU/Chevrolet Tahoe	MPS62U-BA	No Substitute	Varies	Each	\$115.50
80	Federal Signal Micro Pulse Ultra Red/Blue 2020-2026 Ford PIU/Chevrolet Tahoe	MPS62U-RB	No Substitute	Varies	Each	\$115.50

**ATTACHMENT A – COST – EQUIPMENT, PARTS, AND ACCESSORIES (continued)**

Line Item	Product	Manufacturer Part Number		Quantity	UOM	Per Unit Cost
81	Federal Signal Pathfinder Siren Amp 2020-2026 Ford PIU/Chevrolet Tahoe	PF200S17B	No Substitute	Varies	Each	\$1,200.00
82	Federal Signal Common Mic Adapter for Motorola XTL/APX 2020-2026 Ford PIU/Chevrolet Tahoe	ULM-30	No Substitute	Varies	Each	-
83	Federal Signal Dual Corner Blue/Amber LED 2020-2026 Ford PIU/Chevrolet Tahoe	416918-RBA	No Substitute	Varies	Each	\$70.00
84	Federal Signal Micro Pulse Ultra Light Bracket 2020-2026 Ford PIU/Chevrolet Tahoe	MPSM6-LB	No Substitute	Varies	Each	\$11.62
85	Federal Signal Micro Pulse Ultra Blue/White 2020-2026 Ford PIU/Chevrolet Tahoe	MPS62U-BW	No Substitute	Varies	Each	\$115.50
86	Federal Signal Micro Pulse Ultra Red/White 2020-2026 Ford PIU/Chevrolet Tahoe	MPS62U-RW	No Substitute	Varies	Each	\$115.50
87	Federal Signal Pathfinder 24-Channel Expansion Module 2020-2026 Ford PIU/Chevrolet Tahoe	EXPMOD24	No Substitute	Varies	Each	\$225.00
88	Federal Signal Micro Pulse Ultra Window Shroud Kit 2020-2026 Ford PIU/Chevrolet Tahoe	MPSM6U-WIN	No Substitute	Varies	Each	\$41.18
89	Federal Signal Compact Rumbler Speaker 2020-2026 Ford PIU/Chevrolet Tahoe	RBKIT1-Compact	No Substitute	Varies	Each	\$220.00
90	Federal Signal Rumbler S/C PS Kit 2020-2026 Ford PIU/Chevrolet Tahoe	RBS-FPIU20ND	No Substitute	Varies	Each	\$35.38
91	2020 FPIU Light Bar Hook Kit 2020-2026 Ford PIU	HKB-FPIU20-HP	No Substitute	Varies	Each	\$52.80
92	Federal Signal Rear Spoiler Bracket Kit 2020-2026 Ford PIU	MPSM6-FPIU20RS1	No Substitute	Varies	Each	\$115.63
93	Federal Signal Tri Corner Red/Blue/White LED 2020-2026 Ford PIU	416918-RBW	No Substitute	Varies	Each	\$70.00
94	Federal Signal Push Bumper Vertical Light Bracket Kit 2020-2026 Ford PIU/Chevrolet Tahoe	MPSU-PB45V	No Substitute	Varies	Each	\$26.40
95	Federal Signal Micro Pulse Ultra Blue/White 2020-2026 Ford PIU/Chevrolet Tahoe	MPS62U-BW	No Substitute	Varies	Each	\$115.50

**ATTACHMENT A – COST – EQUIPMENT, PARTS, AND ACCESSORIES (continued)**

Line Item	Product	Manufacturer Part Number		Quantity	UOM	Per Unit Cost
96	Not Applicable	Not Applicable	No Substitute	Varies	Each	-
97	Not Applicable	Not Applicable	No Substitute	Varies	Each	-
98	Federal Signal Low Profile Off Axis Interior Light Bar 2020-2026 Ford PIU	SIFMJS-PIU25-P3	No Substitute	Varies	Each	\$915.00
99	Not Applicable	Not Applicable	No Substitute	Varies	Each	-
100	Federal Signal Common Mic Adapter for Motorola XTL/APX 2020-2026 Ford PIU/Chevrolet Tahoe	ULM-60-PF	No Substitute	Varies	Each	\$538.56
101	Federal Signal OBD Cable 23+ Vehicles 2020-2026 Ford PIU	OBDCABLE20-6	No Substitute	Varies	Each	\$131.47
102	Federal Signal Sync Module 2020-2026 Ford PIU/Chevrolet Tahoe	PFSYNC-1	No Substitute	Varies	Each	\$202.75
103	Pathfinder 400W Siren Amp	PF400S17B	No Substitute	Varies	Each	\$1,647.00
104	Federal Signal Tri Color, 18-LED Red/Blue/White 2020-2026 Ford PIU/Chevrolet Tahoe	MPS63U-RBW	No Substitute	Varies	Each	\$131.00
105	Federal Signal Tri Color, 18-LED Red/Blue/Amber 2020-2026 Ford PIU/Chevrolet Tahoe	MPS63U-RBA	No Substitute	Varies	Each	\$131.00
106	Federal Signal 6 Head Spoiler Bracket Kit FPIU20 2020-2026 Ford PIU	MPSM6-FPIU20RS2	No Substitute	Varies	Each	\$115.63
107	Federal Signal AS124 Siren Speaker 2020-2026 Ford PIU/Chevrolet Tahoe	750501	No Substitute	Varies	Each	\$164.21
108	Federal Signal FPIU 2025 ES100C Bracket Kit 2020-2026 Ford PIU	ESB-FPIU25ND	No Substitute	Varies	Each	\$40.13
109	Federal Signal MPS Wide Angle Red/Blue/White LED 2020-2026 Ford PIU/Chevrolet Tahoe	MPSW9-RBW	No Substitute	Varies	Each	\$160.00
110	Federal Signal MPSW9 Mirror Brackets 2020-2026 Ford PIU	MPSMW9-FPIU25MIR	No Substitute	Varies	Each	\$24.29

**ATTACHMENT A – COST – EQUIPMENT, PARTS, AND ACCESSORIES (continued)**

Line Item	Product	Manufacturer Part Number		Quantity	UOM	Per Unit Cost
111	Federal Signal Pathfinder 32-Channel Expansion Module 2020-2026 Ford PIU/Chevrolet Tahoe	EXPMOD32	No Substitute	Varies	Each	\$285.00
112	Federal Signal Taillight Alternating Rear Flasher 2020-2026 Ford PIU	FHL-TAIL	No Substitute	Varies	Each	\$82.37
113	Low Profile Quick Release Keyboard Tray	7160-0857	No Substitute	Varies	Each	\$147.10
114	2" Rocker Switch and AUX 12v Power Outlet Filler	15082	No Substitute	Varies	Each	\$23.33
115	Kussmaul AUX/USB Pass-Through 6' Extension Module	7300-0426	No Substitute	Varies	Each	\$54.00
116	Motorola APX 1500-8500 Remote Head, APX Series Radio and XTL 2500/5000 Control Head Full Faceplate	7160-0321	No Substitute	Varies	Each	\$31.10
117	Federal Signal Smart Siren / SSP2000 and SSP3000 Smart Controller / Platinum Full Faceplate	7160-0338	No Substitute	Varies	Each	\$31.10
118	Magnetic Base Cell Phone Holder	7160-0996-00	No Substitute	Varies	Each	\$37.43
119	Long Offset Adapter Bracket	7160-1015	No Substitute	Varies	Each	\$43.42
120	Pathfinder 400W Siren Amp	PF400SI7B	No Substitute	Varies	Each	\$1,647.00
121	Streamlight Bracket Custom Bracket	SL-Bracket	No Substitute	Varies	Each	\$195.00
122	PC Tel Cable	EXP-CV16NMO-12-204-S1-OR-Y	No Substitute	Varies	Each	\$48.49
123	Common Mic Adapter for Motorola XTL/APX05	ULM-30SBAD	No Substitute	Varies	Each	\$388.08
124	Less Lethal Mount Kit	Less Lethal Mount	No Substitute	Varies	Each	\$300.00
125	Setina Dual Gun Vault	GC12221S1U	No Substitute	Varies	Each	\$563.35
126	30 Minute Flare Box	Flare Box	No Substitute	Varies	Each	\$300.00
127	Rumbler S/C PS Kit	RBS-FIPU20ND	No Substitute	Varies	Each	\$35.38

**ATTACHMENT A – COST – EQUIPMENT, PARTS, AND ACCESSORIES (continued)**

Line Item	Product	Manufacturer Part Number		Quantity	UOM	Per Unit Cost
128	Pathfinder 200W 17BTN	PF200H	No Substitute	Varies	Each	\$840.00
129	Universal Compact/Solo Rumbler	RB-UNIV	No Substitute	Varies	Each	\$40.66
130	Tri Color 18 LED Red/Blue/White	MPS63U-RBW-SMK	No Substitute	Varies	Each	\$131.00
131	Bezel & Shroud Kit	MPSM6U-WIN90-12	No Substitute	Varies	Each	\$170.54
132	Stico 700/800mhz U/C Antenna	CCA-BS7-800	No Substitute	Varies	Each	\$132.48
133	Mongoose XLE 9" w/ 3/8 Stud and IR Bracket	7160-2004-09	No Substitute	Varies	Each	\$452.52
134	Independent Tablet Display Mount	7160-0761	No Substitute	Varies	Each	\$76.46
135	OBDCABLE,GM-PF INTERFACE,20F	OBDCABLE20-5	No Substitute	Varies	Each	\$131.47
136	Kit, BRKT,MPSM6-TA21RS,6 Head	MPSM6-TA21RS	No Substitute	Varies	Each	\$135.17
137	Less Lethal Kit	Less Lethal Kit	No Substitute	Varies	Each	\$140.00
138	A/C Vent Covers fabrication	A/C VENT COVERS	No Substitute	Varies	Each	\$390.00
139	#10XL Coated Poly Partition Chevrolet Tahoe	PK1156TAH21	No Substitute	Varies	Each	\$784.69
140	Brkt Kit, Rumbler Solo, 21 TAH	RBS-TAH21ND	No Substitute	Varies	Each	\$35.38
141	Window Barrier Cargo Area 3 PC. Steel	WK0040TAH21	No Substitute	Varies	Each	\$184.93
142	#12VS 2nd Expanded Metal Partition	PK0123EPD252ND	No Substitute	Varies	Each	\$470.53
143	Rear Cargo platform and rubber mat	Custom Cargo Platform	No Substitute	Varies	Each	\$427.69
144	PB450L4 Alum Bumper ION w/Pad	BK2020EPD25	No Substitute	Varies	Each	\$884.65
145	Wide Body Console Kit	7170-1265-01	No Substitute	Varies	Each	\$934.42

**ATTACHMENT A – COST – EQUIPMENT, PARTS, AND ACCESSORIES (continued)**

Line Item	Product	Manufacturer Part Number		Quantity	UOM	Per Unit Cost
146	25 Expedition 1 Rumbler Kit	RBC1-EXP25ND	No Substitute	Varies	Each	\$35.38
147	#10XL Coated Poly Partition Chevrolet Silverado	PK1156CHT191500	No Substitute	Varies	Each	\$784.69
148	Window Barrier vs. Steel Vertical	WK0514CHT191500H	No Substitute	Varies	Each	\$234.91
149	Wide Body Console Kit	7160-1062-00	No Substitute	Varies	Each	\$734.83
150	GC12221S1U Setina Dual Gun Vault	SG-RACK-DUAL	No Substitute	Varies	Each	\$563.35
151	Setina Push Bumper	BK2020CHT221500	No Substitute	Varies	Each	\$884.65
152	Kit, Brkt, 6hd, Spoiler, sil 19	MPS6U-SIL19RS6	No Substitute	Varies	Each	\$35.38
153	Wide Body Console	7160-1626	No Substitute	Varies	Each	\$737.42
154	Kit, L-Brkt, Single HD,MS6	MPSM6-LB	No Substitute	Varies	Each	\$11.62
155	Brkt kit,Rumbler Solo, 21F-150	RBS-FRD21	No Substitute	Varies	Each	\$40.66
156	Setina Push Bumper PB450L4	BK0534FDT21F150	No Substitute	Varies	Each	\$413.41
157	Poly Coated Partition	PK0355FDT15F150	No Substitute	Varies	Each	\$784.69
158	Door Panel	DK0598FDT15F150	No Substitute	Varies	Each	\$177.79
159	Window Barriers Steel	WK0514FDT15F150H	No Substitute	Varies	Each	\$195.76
160	Setina Dual Gun Vault	GK10301S1U	No Substitute	Varies	Each	\$377.71
161	Dual Color, 12 LED, Amber/White	MPS62U-AW	No Substitute	Varies	Each	\$115.50
162	Dual Color, 24 LED, Amber/White	MPS122U-AW	No Substitute	Varies	Each	\$134.00
163	Pedestal Kit W/Mongoose 9"	7170-1082-01	No Substitute	Varies	Each	\$723.12

**ATTACHMENT A – COST – EQUIPMENT, PARTS, AND ACCESSORIES (continued)**

Line Item	Product	Manufacturer Part Number		Quantity	UOM	Per Unit Cost
164	Interior Window Guard Kit	WGI-F24	No Substitute	Varies	Each	\$1,361.40
165	Rear Partition	P-REAR-3	No Substitute	Varies	Each	\$1,380.20
166	Rear Step	PT-A-103	No Substitute	Varies	Each	\$777.00
167	Front Partition	P-FRONT-3	No Substitute	Varies	Each	\$1,643.04
168	Middle Partition Panel	P-MID-2	No Substitute	Varies	Each	\$718.60
169	Rear Partition Filler Panel Kit	P-MFK-15	No Substitute	Varies	Each	\$254.00
170	Custom 3rd Row Isolation Cell	Custom Part	No Substitute	Varies	Each	\$5,500.00
171	Valor Amber Lightbar w/ controller	VALR44J-AMBR2	No Substitute	Varies	Each	\$2,529.00

**ATTACHMENT B – COST – EQUIPMENT, PARTS, AND ACCESSORIES  
INSTALLATION AND REMOVAL SERVICES**

Total Cost (not including sales tax) listed on this page reflect:

1. Total labor for equipment installation on a new vehicle and vehicle strip-out (see **Exhibits No. 1,2, & 3**).
2. consumables, and job materials.
3. Any necessary fabricated materials.

Description	Labor	Parts	Materials	Total Cost
<b>Transport Van</b>				
Ford Transit 350 Passenger van or similar	\$16,875.00	\$33,222.94	\$400.00	\$50,497.94
Strip-Out (Removal of equipment)	\$810.00		\$75.00	\$885.00
<b>Patrol Vehicle</b>				
Ford Explorer UV Interceptor	\$6,075.00	\$16,188.50	\$275.00	\$22,538.50
Chevrolet Tahoe or similar	\$7,560.00	\$16,914.69	\$275.00	\$24,749.69
Ford Expedition	\$6,750.00	\$15,716.27	\$275.00	\$22,741.27
Strip-Out (Removal of equipment)	\$810.00		\$75.00	\$885.00
<b>Patrol Utility Vehicle</b>				
Ford Explorer UV Interceptor – Slick Top	\$6,075.00	\$15,388.50	\$275.00	\$23,606.49
Strip-Out (Removal of equipment)	\$810.00		\$75.00	\$885.00
<b>Trucks, SUVs &amp; Sedans</b>				
Unmarked Sedans	\$4,860.00	\$4,062.20	\$175.00	\$9,097.20
Unmarked Trucks, SUVs	\$4,860.00	\$4,062.20	\$175.00	\$9,097.20
Patrol Trucks - Ford 150	\$6,750.00	\$13,758.32	\$275.00	\$20,783.32
Patrol Trucks - SILVERADO	\$6,750.00	\$14,544.27	\$275.00	\$21,569.27
AMBER COLORADO	\$5,400.00	\$6,222.37	\$200.00	\$11,822.37
<b>OHV Units</b>				
Side-by-side	\$4,590.00	\$6,831.21	\$150.00	\$11,571.21
Motorcycles (Dirt Bikes)	\$3,240.00	\$2,633.40	\$145.00	\$6,018.40
Utility Off-Road Vehicle	\$4,590.00	\$6,831.21	\$150.00	\$12,581.50
<b>Specialty Vehicles Not Covered Above</b>				
	Labor	Fabrication	Materials	
	\$ 135 /hour	\$ 165 /hour	\$275	

**See Exhibits No. 1 and No. 2 for lights, siren, radio, and Axon cameras harness installation wiring diagrams.** All pricing is based upon the scope of work provided by the County. Prices are fixed rates per scope of work. Prices include both removal and installation of equipment on vehicles, without sales tax. Any equipment not supplied by the County and necessary to complete the installation must be approved by the County prior to installation on the vehicle.



## **ATTACHMENT C**

### **Levine Act –**

### **Campaign Contribution Disclosure**

### **(formerly referred to as Senate Bill 1439)**

The following is a list of items that are not covered by the Levine Act. A Campaign Contribution Disclosure Form will not be required for the following:

- Contracts that are competitively bid and awarded as required by law or County policy
- Contracts with labor unions regarding employee salaries and benefits
- Personal employment contracts
- Contracts under \$50,000
- Contracts where no party receives financial compensation
- Contracts between two or more public agencies
- The review or renewal of development agreements unless there is a material modification or amendment to the agreement
- The review or renewal of competitively bid contracts unless there is a material modification or amendment to the agreement that is worth more than 10% of the value of the contract or \$50,000, whichever is less
- Any modification or amendment to a matter listed above, except for competitively bid contracts.

#### **DEFINITIONS**

**Actively supporting or opposing the matter:** (a) Communicate directly with a member of the Board of Supervisors or other County elected officer [Sheriff, Assessor-Recorder-Clerk, District Attorney, Auditor-Controller/Treasurer/Tax Collector] for the purpose of influencing the decision on the matter; or (b) testifies or makes an oral statement before the County in a proceeding on the matter for the purpose of influencing the County's decision on the matter; or (c) communicates with County employees, for the purpose of influencing the County's decision on the matter; or (d) when the person/company's agent lobbies in person, testifies in person or otherwise communicates with the Board or County employees for purposes of influencing the County's decision in a matter.

**Agent:** A third-party individual or firm who, for compensation, is representing a party or a participant in the matter submitted to the Board of Supervisors. If an agent is an employee or member of a third-party law, architectural, engineering or consulting firm, or a similar entity, both the entity and the individual are considered agents.

**Otherwise related entity:** An otherwise related entity is any for-profit organization/company which does not have a parent-subsidary relationship but meets one of the following criteria:

- (1) One business entity has a controlling ownership interest in the other business entity;
- (2) there is shared management and control between the entities; or
- (3) a controlling owner (50% or greater interest as a shareholder or as a general partner) in one entity also is a controlling owner in the other entity.

For purposes of (2), "shared management and control" can be found when the same person or substantially the same persons own and manage the two entities; there are common or commingled funds or assets; the business entities share the use of the same offices or employees, or otherwise share activities, resources or personnel on a regular basis; or there is otherwise a regular and close working relationship between the entities.

**Parent-Subsidiary Relationship:** A parent-subsidiary relationship exists when one corporation has more than 50 percent of the voting power of another corporation.

**Contractors must respond to the questions on the following page. If a question does not apply respond N/A or Not Applicable.**

1. Name of Contractor: West Coast Lights & Sirens
2. Is the entity listed in Question No.1 a nonprofit organization under Internal Revenue Code section 501(c)(3)?  
 Yes  If yes, skip Question Nos. 3-4 and go to Question No. 5      No
3. Name of Principal (i.e., CEO/President) of entity listed in Question No. 1, if the individual actively supports the matter and has a financial interest in the decision: \_\_\_\_\_
4. If the entity identified in Question No.1 is a corporation held by 35 or less shareholders, and not publicly traded (“closed corporation”), identify the major shareholder(s):  
 \_\_\_\_\_
5. Name of any parent, subsidiary, or otherwise related entity for the entity listed in Question No. 1 (see definitions above):

Company Name	Relationship

6. Name of agent(s) of Contractor:

Company Name	Agent(s)	Date Agent Retained (if less than 12 months prior)

7. Name of Subcontractor(s) (including Principal and Agent(s)) that will be providing services/work under the awarded contract if the subcontractor (1) actively supports the matter and (2) has a financial interest in the decision and (3) will be possibly identified in the contract with the County or board governed special district.

Company Name	Subcontractor(s):	Principal and//or Agent(s):

8. Name of any known individuals/companies who are not listed in Questions 1-7, but who may (1) actively support or oppose the matter submitted to the Board and (2) have a financial interest in the outcome of the decision:

Company Name	Individual(s) Name

9. Was a campaign contribution, of more than \$500, made to any member of the San Bernardino County Board of Supervisors or other County elected officer involved with this Contract within the prior 12 months, by any of the individuals or entities listed in Question Nos. 1-8?

No

Yes  If **yes**, please provide the contribution information in Question 11.

10. Has an agent of Contractor made a campaign contribution of any amount to any member of the San Bernardino County Board of Supervisors or other elected officer involved with this Contract while award of this Contract is being considered?

No  If no, please skip question 11.

Yes  If **yes**, please provide the contribution information in Question 11.

11. Name of Board of Supervisor Member or other County elected officer: \_\_\_\_\_

Name of Contributor: \_\_\_\_\_

Date(s) of Contribution(s): \_\_\_\_\_

Amount(s): \_\_\_\_\_

Please add an additional sheet(s) to identify additional Board Members or other County elected officers to whom anyone listed made campaign contributions.

By signing the Contract, Contractor certifies that the statements made herein are true and correct. Contractor acknowledges that agents are prohibited from making any campaign contributions, regardless of amount, to any member of the Board of Supervisors or other County elected officer involved with this Contract, while award of this Contract is being considered and for 12 months after a final decision by the County. Contractor understands that the other individuals and entities (excluding agents) listed in Question Nos. 1-8 are prohibited from making campaign contributions of more than \$500 to any member of the Board of Supervisors or other County elected officer involved with this Contract, while award of this Contract is being considered and for 12 months after a final decision by the County.



Including Lights, Siren, Radio and Axon Cameras Harness -- Continued

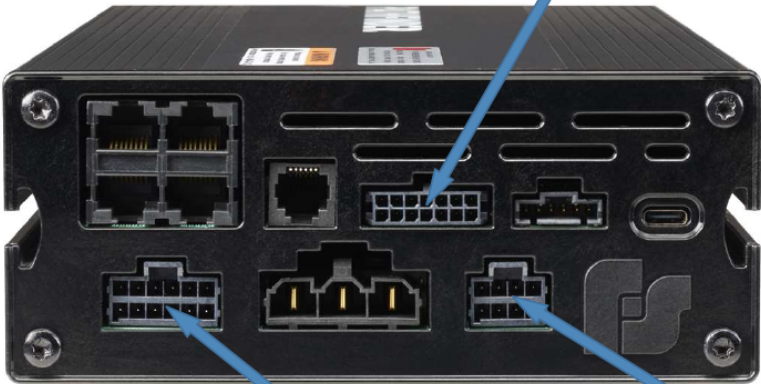


EXPMOD24 J2					
1	2	3	4	5	6
Relay 1	Relay 2	Relay 3	Relay 4	Relay 5	Relay 6
DS Frnt Crnr Red	DS PB Side Blue	DS PB Side Red	DS Frnt Crnr Blue	DS PB Front Blue	DS PB Front Red
7	8	9	10	11	12
Relay 7	Relay 8	Relay 9	Relay 10	Relay 11	Relay 12
PS Frnt Crnr Red	PS PB Front Vblue	PS PB Front Red	PS Frnt Crnr Blue	PS PB Side Blue	PS PB Side Red

EXPMOD24 J4					
1	2	3	4	5	6
Input 1	5-8 B+	21-24 B+	13-16 B+	17-20 B+	CN Data A
DS Brake IN	Fused B+	Fused B+	Fused B+	Fused B+	CAT5
7	8	9	10	11	12
Input 2	1-4 B+	9-12 B+	CN Data B	CN +	CN -
PS Brake IN	Fused B+	Fused B+	CAT5	CAT5	CAT5

EXPMOD24 J3					
1	2	3	4	5	6
Relay 13	Relay 14	Relay 15	Relay 16	Relay 17	Relay 18
DS Spoiler Amber	DS Quarter Blue	DS Spoiler Blue	DS Spoiler Red	DS Quarter Red	DS Brake Out
7	8	9	10	11	12
Relay 19	Relay 20	Relay 21	Relay 22	Relay 23	Relay 24
PS Spoiler Amber	PS Quarter Blue	PS Spoiler Blue	PS Spoiler Red	PS Quarter Red	PS Brake Out

PF400 Inputs Connector						
1	2	3	4	5	6	7
		Relay 16	Relay 15	Relay 14	Relay 13	Horn
Not Used	Not Used	Not Used	Not Used	Not Used	Wig Wag Trigger	Horn Out
8	9	10	11	12	13	14
IGN						Horn Ring
IGN	Not Used	Not Used	Not Used	Not Used	Not Used	Horn IN



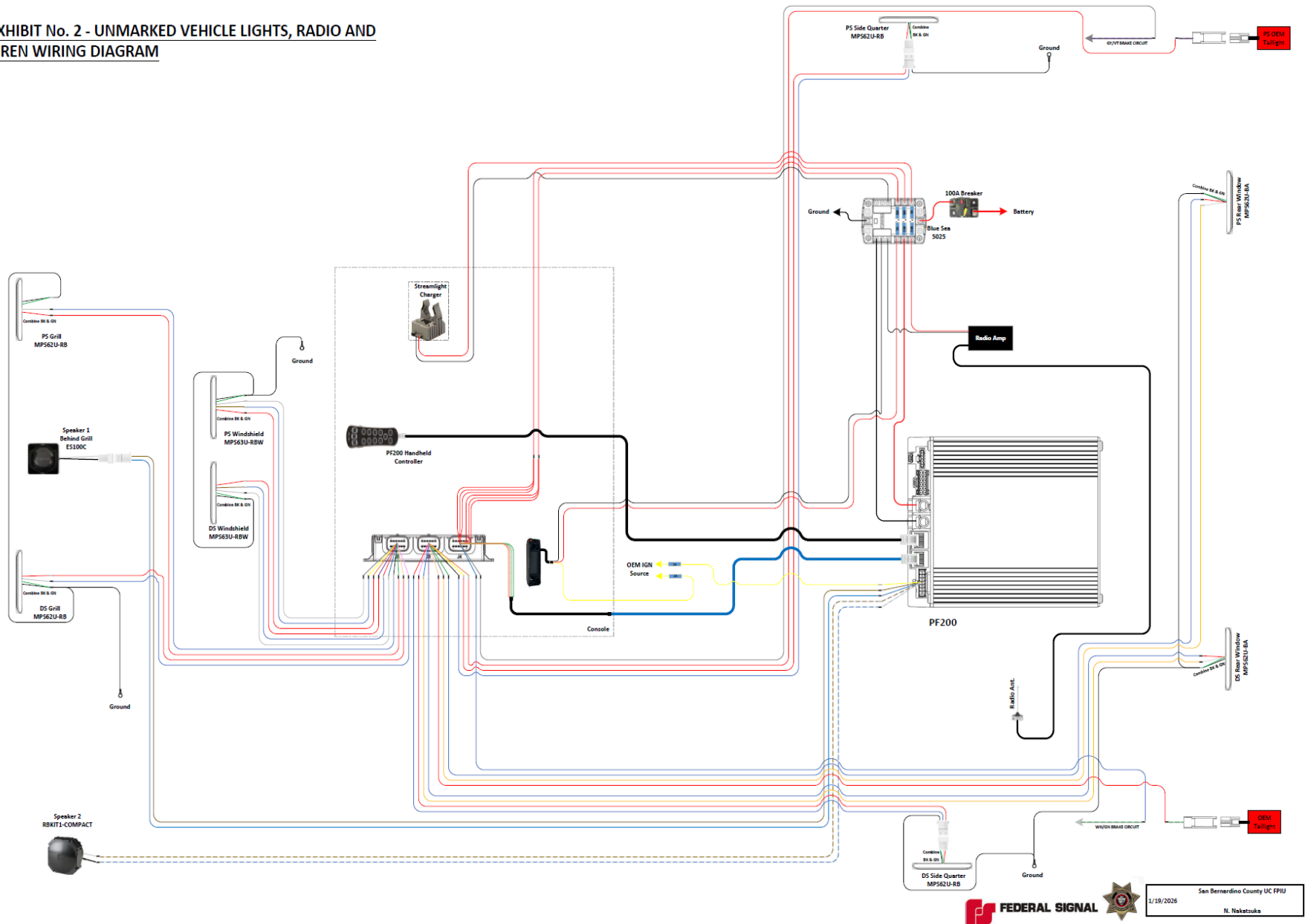
**EXHIBIT No. 1 - MARKED VEHICLES WIRING DIAGRAM**  
 Including Lights, Siren, Radio and Axon Cameras Harness -- Continued

PF400 Relay Output Connector					
1	2	3	4	5	6
Relay 9	Relay 8	Relay 7	Relay 10	Relay 11	Relay 12
PS Hatch Blue	Not Used	DS Hatch Blue	DS Hatch Amber	Common Mic Adapter	PS Hatch Amber
7	8	9	10	11	12
Relay 5	Relay 1	Relay 2	Relay 3	Relay 4	Relay 6
Passenger Spotlight	AXON Light Trigger	AXON Siren	Preemption Emitter	AXON Brake	Gun Locks/AXON Gun Trigger

PF400 Speaker Connector			
1	2	3	4
Spkr 1 LO	Spkr 2 LO	Spkr 3 LO	Spkr 4 LO
750501 # 1 Low	750501 # 2 Low	750501 # 3 Low	Rumbler Lo
5	6	7	8
Spkr 1 HI	Spkr 2 HI	Spkr 3 HI	Spkr 4 HI
750501 # 1 Hi	750501 # 2 Hi	750501 # 3 Hi	Rumbler Hi

# EXHIBIT No. 2 – UNMARKED VEHICLE LIGHTS, RADIO, AND SIREN WIRING DIAGRAM

EXHIBIT No. 2 - UNMARKED VEHICLE LIGHTS, RADIO AND SIREN WIRING DIAGRAM



**EXHIBIT No. 2 - UNMARKED VEHICLE LIGHTS, RADIO AND SIREN  
WIRING DIAGRAM --- Continued**



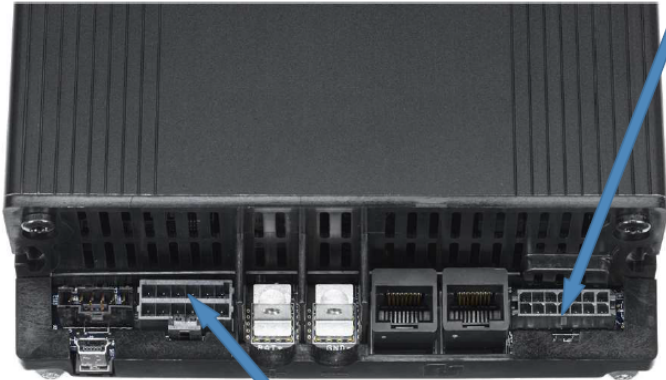
EXPMOD24 J4					
1	2	3	4	5	6
Input 1	5-8 B+	21-24 B+	13-16 B+	17-20 B+	CN Data A
DS Brake IN	Fused B+	Fused B+	Fused B+	Fused B+	CAT5
7	8	9	10	11	12
Input 2	1-4 B+	9-12 B+	CN Data B	CN +	CN -
PS Brake IN	Fused B+	Fused B+	CAT5	CAT5	CAT5

EXPMOD24 J3					
1	2	3	4	5	6
Relay 13	Relay 14	Relay 15	Relay 16	Relay 17	Relay 18
DS Rear Window Amber	DS Quarter Blue	DS Rear Window Blue	Not Used	DS Quarter Red	DS Brake Out
7	8	9	10	11	12
Relay 19	Relay 20	Relay 21	Relay 22	Relay 23	Relay 24
PS Rear Window Amber	PS Quarter Blue	PS Rear Window Blue	Not Used	PS Quarter Red	PS Brake Out

EXPMOD24 J2					
1	2	3	4	5	6
Relay 1	Relay 2	Relay 3	Relay 4	Relay 5	Relay 6
DS Windshield White	DS Windshield Blue	DS Windshield Red	Not Used	DS Grill Blue	DS Grill Red
7	8	9	10	11	12
Relay 7	Relay 8	Relay 9	Relay 10	Relay 11	Relay 12
PS Windshield White	PS Grill Blue	PS Grill Red	Not Used	PS Windshield Blue	PS Windshield Red



San Bernardino County UC FPIU  
EXPMOD24 Connections  
N. Nakatsuka  
1/19/2026



PF200 Inputs Connector						
1	2	3	4	5	6	7
		Spkr 1 Hi	Spkr 1 Lo	Spkr 2 Hi	Spkr 2 Lo	Horn
Not Used	Not Used	ES100C Hi	ES100C Lo	Rumbler Hi	Rumbler Lo	Not Used
8	9	10	11	12	13	14
IGN						Horn Ring
IGN	Not Used	Not Used	Not Used	Not Used	Not Used	Not Used

**EXHIBIT No. 2 - UNMARKED VEHICLE LIGHTS, RADIO AND SIREN  
WIRING DIAGRAM --- Continued**

PF200 Relay Output Connector					
1	2	3	4	5	6
Relay 9	Relay 8	Relay 7	Relay 10	Relay 11	Relay 12
Not Used	Not Used	Not Used	Not Used	Not Used	Not Used
7	8	9	10	11	12
Relay 5	Relay 1	Relay 2	Relay 3	Relay 4	Relay 6
Not Used	Not Used	Not Used	Not Used	Not Used	Not Used

**EXHIBIT No. 3 - VEHICLE BUILD OUTS**

<b>2025-2026 Ford Police Utility Build Parts</b>		
<b>Part Number</b>	<b>Item Description</b>	<b>Quantity</b>
PK11261TU20TM	XL Coated Poly Partition Tall Man	1
QK06351TU20	Expanded Metal w/Replacement Seat	1
TK02491TU20	PI SUV Cargo Tray Single Deck	1
WK05141TU20	Window Barrier vs. Steel Vertical	1
BK15581TU20	Setina PB Light Ready PB450LR4	1
VALR51J	51" Valor Light Bar	1
HKB-FPIU20	2020 FPIU Light Bar Hook Kit	1
2020FORDSUVKIT	Gamber Johnson Center Console	1
750501	AS 124 Speaker	2
MPS63U-RBA	Tri Color Red/Blue/Amber	2
MPS62U-BA	Micro Pulse Ultra Blue/Amber	2
MPS62U-RB	Micro Pulse Ultra Red/Blue	6
PF400SI7B	400 W Patherfinder Siren Amp	1
SL-Charger	Streamlight Charger	1
SL-Bracket	Streamlight Bracket	1
DM-W15-3C2CWHT-180	White Dome Antenna Duratech	1
A15WB698BS	698-3000mhz Black Open Spring Antenna	1
HAF40164	PC Tel Cable/Antenna	1
EXP-CV16NMO-12-204-S1-OR-Y	PC Tel Cable	1
MMSU-1	Magnetic Mic	1
MDASHCPE	Nova Strobe Pre-emption Opticom	1
382/LPS-116	Lind Power Supply for GTAC	1
ULM-30SBAD	Common Mic Adapter for Motorola XTL/APX05	1
Less Lethal Mount	Less Lethal Mount Kit	1
825/GC12221S1U	Setina Dual Gun Vault	1
EXPMOD24	Pathfinder 24 Channel Expansion Module	1
MPSM6-FPIU20RS1	Rear Spoiler Brkt Kit	1
416918-RBW	Dual Corner Red/Blue Led	2
Flare Box	30 Minute Flare Box	1
MPSM6U-WIN	Bezel Shroud Kit	2
RBKITI-COMPACT	Compact Rumbler Spkr	1
RBS-FIPU20ND	Rumbler S/C PS Kit	1
MPSU-PB45V	Push Bumper Vertical Light Brkt Kit	1

**EXHIBIT No. 3 - VEHICLE BUILD OUTS --- CONTINUED**

<b>2025-2026 Unmarked Build Parts</b>		
<b>Part Number</b>	<b>Item Description</b>	<b>Quantity</b>
PF200H	Pathfinder, 100/200W ,Handheld	1
EXPMOD24	Pathfinder 24-Channel Expansion Module	1
ES100C	SPKR,EMERG, 100W, Plastic	1
ESB-U	Kit ES100 Universal Bail	1
RBKIT1-COMPACT	Kit, 1 Compact Rumbler SPKR	1
RB-UNIV	Universal Compact/Solo Rumbler	1
MPS63U-RBW-SMK	Tri Color 18 LED Red/Blue/White	2
MPS63U-RBW	Tri Color 18 LED Red/Blue/White	4
MPS63U-RBA	Tri Color 18 LED Red/Blue/Amber	2
416918-RBA	Tri, Corner LED, Red/Blue/Amber	2
MPSM6U-WIN	Bezel & Shroud Kit, MPSM6U	2
MPSM6U-WIN90-12	Bezel & Shroud Kit	2
CCA-BS7-800	Stico 700/800mhz U/C Antenna	1
SL-CHARGER	Streamlight Charger	1

**EXHIBIT No. 3 - VEHICLE BUILD OUTS --- CONTINUED**

<b>2025-2026 Ford Expedition Pursuit Police Vehicle Build Parts</b>		
<b>Part Number</b>	<b>Item Description</b>	<b>Quantity</b>
PK1152EPD18	XL Coated Poly Partition Tall Man	1
DK0598EPD18	Door Panel	1
PK0123EPD252ND	2nd Expanded Metal Partition	1
CARGO PLATFORM	Rear Cargo platform and rubber mat	1
WK0514EPD18	Window Barrier vs. Steel Vertical	1
BK2020EPD25	Setina Push Bumper 450LR4	1
VALR51J	51" Valor Light Bar W/Hook Kit	1
7170-1265-01	Wide Body Console Kit	1
7160-2004-09	Mongoose XLE 9" w/ 3/8 Stud and IR Bracket	1
7160-0761	Independent Tablet Display Mount	1
750501	AS 124 Speaker	2
MPS62U-BA	Micro Pulse Ultra Blue/Amber	2
MPS62U-RB	Micro Pulse Ultra Red/Blue	6
PF400S17B	Pathfinder 400W Siren Amp	1
SL-Charger	Streamlight Charger	1
SL-Bracket	Streamlight Bracket	1
DM-W15-3C2CWHT-180	White Dome Antenna Duratech	1
A15WB698BS	698-3000mhz Black Open Spring Antenna	1
HAF40164	PC Tel Cable/Antenna	1
EXP-CV16NMO-12-204-S1-OR-Y	PC Tel Cable	1
MMSU-1	Magnetic Mic	1
MDASHCPE	Nova Strobe Pre-emption Opticom	1
382/LPS-116	Getac Power Supply	1
ULM30-SBAD	Common Mic Adapter for Motorola XTL/APX05	1
Less Lethal Kit	Less Lethal Kit	1
GC12221S1U	Setina Dual Gun Vault	1
416918-RBW	Tri, Corner LED Red/Blue/White	2
A/C VENT COVERS	A/C Vent Covers	1
Flare Box	30 Minute Flare Box	1
OBDCABLE20-6	OBDCABLE, 23+ Vheicle Models	1
PFSYNC-1	On-Scene Sync, GPS/AMBIENT	1
MPS62U-RW	Micropulse Ultra LED Red/White	2
EXPMOD24	Pathfinder 24-Channel Expansion Module	1
MPSM6U-WIN	Bezel Shroud Kit	1
RBKITI-Compact	Compact Rumbler Spkr	1
RBC1-EXP25ND	25 Expedition 1 Rumbler Kit	1
MPS63U-RBA	Tri Color, 18-LED, Red/Blue/Amber	6
MPSU-PB45V	Kit, BRKT,Push Bump, 45 Vert, MPS	2

**EXHIBIT No. 3 - VEHICLE BUILD OUTS --- CONTINUED**

<b>2025-2026 Ford F-150 Pursuit Police Vehicle Build Parts</b>		
<b>Part Number</b>	<b>Item Description</b>	<b>Quantity</b>
7160-1626	Wide Body Console	1
VALR51J	Valor 51" Light Bar w/hook kit	1
PF400S17B	Pathfinder 400W Amplifier	1
750501	AS 124 Speaker	2
416918-RBW	Tri, Corner LED, Red/Blue/White	2
MPS62U-RB	Dual Color, 12-LED Red/Blue	6
MPS63U-RBA	Tri Color, 18 LED, Red/Blue/Amber	6
MPS62U-BA	Dual Color, 12-LED Blue/Amber	2
OBD CABLE20-6	OBD Cable, 23+Vehicle models	1
PFSYNC-1	On-Scene Sync, GPS /Ambient	1
ULM30-SBAD	Mic Adapter, SBAD	1
EXPMOD24	Pathfinder 24-Channel Expansion Module	1
MPSU-PB45V	Brkt Kit, Push Bump, 45 Vert, MPS	2
MPSM6-LB	Kit, L-Brkt, Single HD,MS6	2
RBKIT1-Compact	Kit, 1 Compact Rumbler Spkr	1
RBS-FRD21	Brkt kit,Rumbler Solo, 21F-150	1
BK0534FDT21F150	Setina Push Bumper PB450L4	1
PK0355FDT15F150	Poly Coated Partition	1
DK0598FDT15F150	Door Panel	1
WK0514FDT15F150H	Window Barriers Steel	1
GK10301S1U	Dual Gun Rack	1
7160-0761	Tablet Display Mount	1
7160-2004-09	Mongoose 9' XLE	1
7160-0857	Low Profile Quick Release Keyboard Tray	1
17040	Magnetic Mic	1
15082	2" Rocker Switch/Aux/Outlet Filler Panel	1
7300-0426	Aux USB Pass Through 6' Extension Panel	1
7160-0321	Motorola APX Control Head Faceplate	1
7160-0338	Federal Signal Controller Faceplate	1
7160-0996-00	Magnetic Cell Phone Holder	1
7160-1015	9.5" Offset Adapter Bracket	1

**EXHIBIT No. 3 - VEHICLE BUILD OUTS --- CONTINUED**

<b>2025-2026 Chevrolet Colorado Special Services Vehicle Build</b>		
<b>Part Number</b>	<b>Item Description</b>	<b>Quantity</b>
PF200S17B	Pathfinder 200W 17BTN	1
ES100C	Spkr, Emerg, 100W Plastic	1
ESB-U	Kit, ES100 Universal Bail	1
EXPMOD24	Pathfinder 24-Channel Expansion Module	1
PFSYNC-1	On-Scene Sync, GPS/Ambient	1
MPS62U-AW	Dual Color, 12 LED, Amber/White	4
MPS122U-AW	Dual Color, 24 LED, Amber/White	2
ULM30-SBAD	Mic Adapter, SBAD	1
MPSM6-LB	Kit, L-BRKT, Single HD, MS6	4
7170-1082-01	Pedestal Kit W/Mongoose 9"	1

**EXHIBIT No. 3 - VEHICLE BUILD OUTS --- CONTINUED**

<b>2025-2026 Ford Transit 350 Inmate Transport Build Parts</b>		
<b>Part Number</b>	<b>Item Description</b>	<b>Quantity</b>
WGI-F24	Window Guards	1
P-REAR-3	Rear Partition	1
PT-A-103	Rear Step	1
P-FRONT-3	Front Partition	1
P-MID-2	Middle Partition Panel	1
P-MFK-15	Rear Partition Filler Panel Kit	1
Flashlight Charger	Streamlight Charger	1
MMSU-1	Magnetic Mic	1
SC-1	Shotgun Lock	1
SC-1AR	Rifle Lock	1
SG-RACK-DUAL	Dual Gun Rack	1
PF200H	Pathfinder 100/200W, Handheld	1
EXPMOD24	Pathfinder 24-Channel Expansion	1
ES100C	SPKR, EMERG, 100W, Plastic	1
ESB-U	Kit, ES100 Universal Bail	1
ULM30-SBAD	Mic Adapter, SBAD	1
RBKIT1-Compact	Kit, 1 Compact Rumbler Spkr	1
RB-UNIV	Universal Compact/Solo Rumbler	1
MPS63U-RBW	Tri Color, 18 LED, Red/Blue/White	4
MPS63U-RBA	Tri Color, 18 LED, Red/Blue/Amber	2
MPSM6U-Win	Beze I& Shroud Kit, MPSM6U	2
Custom	Custom 3rd Row Isolation Cell	1
SC-1	Shotgun Lock	1
SC-1AR	AR-15 Gun Lock	1
SG-RACK-DUAL	Troy Gun Rack	1

**EXHIBIT No. 3 - VEHICLE BUILD OUTS --- CONTINUED**

<b>2025-2026 Chevrolet Silverado 1500 Pursuit Police Vehicle Build Parts</b>		
<b>Part Number</b>	<b>Item Description</b>	<b>Quantity</b>
PK1156CHT191500	Coated Poly Partition	1
WK0514CHT191500H	Window Barrier vs. Steel Vertical	1
DK0598CHT191500	Door Panel	1
WK0055CHT191500	Rear Window Barrier	1
VALR51J	51" Valor Light Bar W/Hook Kit	1
7160-1062-00	Wide Body Console Kit	1
7160-2004-09	Mongoose 9' XLE	1
7160-0761	Independent Tablet Display Mount	1
750501	AS 124 Speaker	1
MPS63U-RBA	Tri Color, 18-LED Red/Blue/Amber	6
416918-RBW	Tri, Corner LED Red/ Blue/White	2
MPS62U-RB	Dual Color, 12-LED Red/Blue	6
MPS62U-BA	Dual Color, 12-LED Blue/Amber	4
PF400S17B	Pathfinder 400W, 17BTN	1
SL-Charger	Streamlight Charger	1
SL-Bracket	Streamlight Bracket	1
BSG-1CI	City Decal Package	1
DM-W15-3C2CWHT-180	White Dome Antenna Duratech	1
A15WB698BS	698-3000mhz Black Open Spring Antenna	1
HAF40164	PC Tel Cable/Antenna	1
EXP-CV16NMO-12-204-S1-OR-Y	PC Tel Cable	1
MMSU-1	Magnetic Mic	1
MDASHCPE	Nova Strobe Pre-emption Opticom	1
GE 1950-2304 FC	Getac Power Supply	1
ULM30-SBAD	Common Mic Adapter for Motorola XTL/APX05	1
SG-RACK-DUAL	Dual Gun Rack	1
OBDCABLE20-5	OBD Cable, GM-PF Interface,20F	1
BK2020CHT221500	Setina Push Bumper	1
MPSU-PB45V	PUSH BUMPER 45 VERTICAL	1
PFSYNC-1	On-Scene Sync, GPS /Ambient	1
EXPMOD24	Pathfinder 24-Channel Expansion Module	1
MPS6U-SIL19RS6	Kit, Brkt, 6hd, Spoiler, sil 19	1
MPSM6-LB	Kit, L Brkt, Single HD, MS6	2
RBKIT1-COMPACT	Kit, 1 Compact Rumbler Spkr	1
RBS-TAH21ND	Brkt Kit, Rumbler Solo, 21 TAH	1
MPSU-PB45V	Brkt Kit, Push Bump, 45 Vert, MPS	2