

PROPOSED BOUNDARIES FOR ANNEXATION NO. 208
COMMUNITY FACILITIES DISTRICT NO. 94-01 (HESPERIA)
SAN BERNARDINO COUNTY FIRE PROTECTION DISTRICT, STATE OF CALIFORNIA

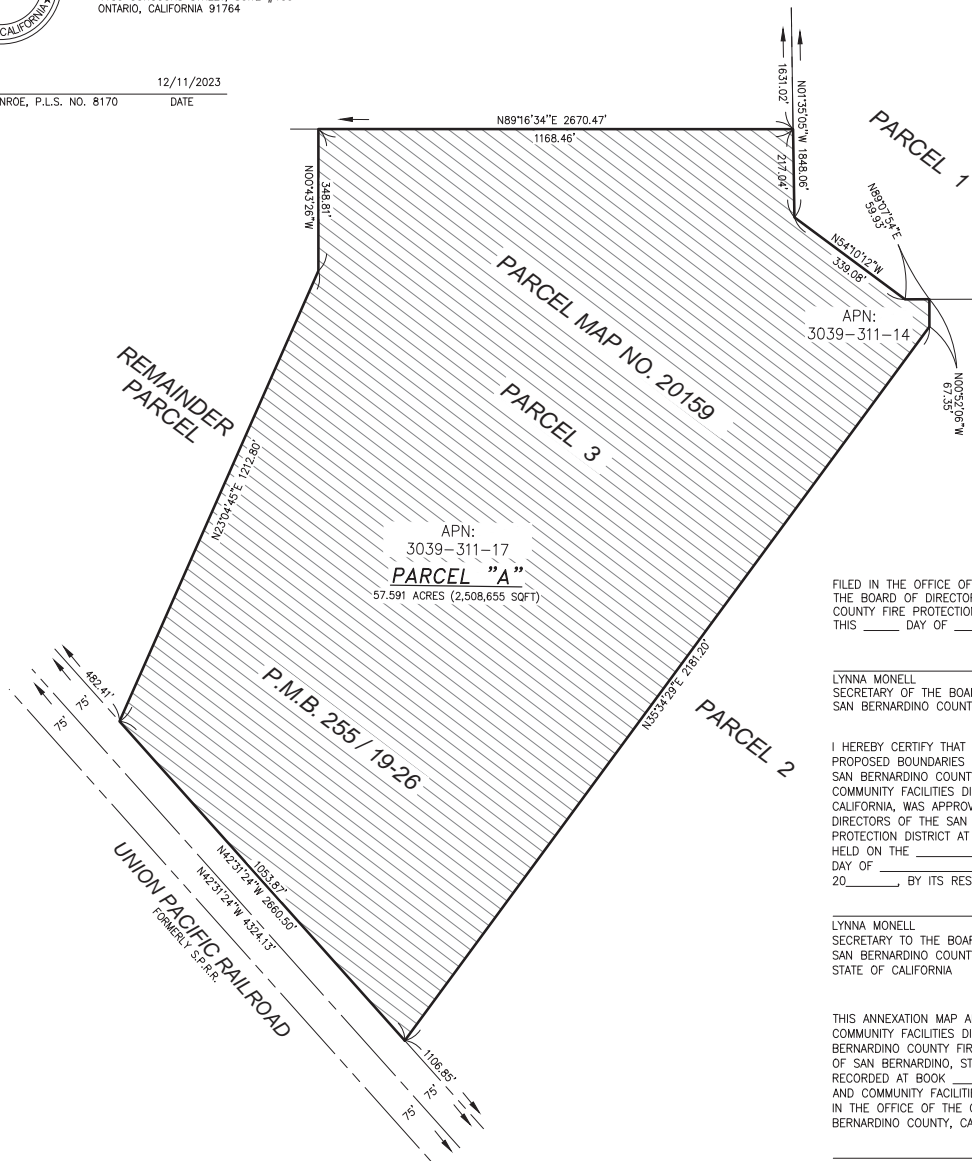


SCALE: 1" = 200'



PREPARED BY:
MARK A. MONROE, P.L.S. NO. 8170
WESTLAND GROUP, INC.
4150 CONCOURS STREET, SUITE #100
ONTARIO, CALIFORNIA 91764

12/11/2023
MARK A. MONROE, P.L.S. NO. 8170 DATE



FILED IN THE OFFICE OF THE SECRETARY OF
THE BOARD OF DIRECTORS OF THE SAN BERNARDINO
COUNTY FIRE PROTECTION DISTRICT
THIS ____ DAY OF _____, 20____

LYNNA MONELL
SECRETARY OF THE BOARD
SAN BERNARDINO COUNTY FIRE PROTECTION DISTRICT

I HEREBY CERTIFY THAT THE WITHIN MAP SHOWING THE
PROPOSED BOUNDARIES OF ANNEXATION NO. 208 OF
SAN BERNARDINO COUNTY FIRE PROTECTION DISTRICT
COMMUNITY FACILITIES DISTRICT NO. 94-01, STATE OF
CALIFORNIA, WAS APPROVED BY THE BOARD OF
DIRECTORS OF THE SAN BERNARDINO COUNTY FIRE
PROTECTION DISTRICT AT A REGULAR MEETING THEREOF,
HELD ON THE ____
DAY OF _____,
20____ BY ITS RESOLUTION NO. _____

LYNNA MONELL
SECRETARY TO THE BOARD
SAN BERNARDINO COUNTY FIRE PROTECTION DISTRICT
STATE OF CALIFORNIA

THIS ANNEXATION MAP AMENDS THE BOUNDARY MAP FOR
COMMUNITY FACILITIES DISTRICT NO. 94-01 OF THE SAN
BERNARDINO COUNTY FIRE PROTECTION DISTRICT, COUNTY
OF SAN BERNARDINO, STATE OF CALIFORNIA. PRIOR
RECORDED AT BOOK ____ OF MAPS OF ASSESSMENT
AND COMMUNITY FACILITIES DISTRICTS, AT PAGE ____
IN THE OFFICE OF THE COUNTY RECORDER FOR SAN
BERNARDINO COUNTY, CALIFORNIA

LYNNA MONELL
SECRETARY TO THE BOARD
SAN BERNARDINO COUNTY FIRE PROTECTION DISTRICT
STATE OF CALIFORNIA

SAN BERNARDINO COUNTY RECORDER'S CERTIFICATE

THIS MAP HAS BEEN FILLED UNDER DOCUMENT NUMBER
_____, THIS ____ DAY OF
_____, 20____, AT _____, IN BOOK
_____, OF MAPS OF ASSESSMENT AND
COMMUNITY FACILITIES DISTRICT AT PAGE(S) _____, AT
THE REQUEST OF THE SAN BERNARDINO COUNTY FIRE
PROTECTION DISTRICT COMMUNITY FACILITIES DISTRICT.

94-01 IN THE AMOUNT OF \$ _____
CHRIS WILHITE
ASSESSOR-RECORDER
SAN BERNARDINO COUNTY

BY: _____
DEPUTY RECORDER

PROPOSED ANNEXATION

APN #: FOR CONVEYANCING PURPOSES:
3039-311-17
3039-311-14

LEGAL DESCRIPTION

THE LAND REFERRED TO HEREIN BELOW IS SITUATED IN THE CITY OF
HESPERIA, COUNTY OF SAN BERNARDINO, STATE OF CALIFORNIA, AND IS
DESCRIBED AS FOLLOWS:

PARCEL A:
PARCEL 3 OF PARCEL MAP NO. 20159, IN THE CITY OF HESPERIA, COUNTY
OF SAN BERNARDINO, STATE OF CALIFORNIA, AS SHOWN BY PARCEL MAP ON
FILE IN BOOK 255, PAGES 19 TO 26, INCLUSIVE, OF PARCEL MAPS,
OFFICIAL RECORDS OF SAN BERNARDINO COUNTY, CALIFORNIA.

FILED IN THE OFFICE OF THE SECRETARY OF
THE BOARD OF DIRECTORS OF THE SAN BERNARDINO
COUNTY FIRE PROTECTION DISTRICT
THIS ____ DAY OF _____, 20____

LYNNA MONELL
SECRETARY OF THE BOARD
SAN BERNARDINO COUNTY FIRE PROTECTION DISTRICT

LEGEND



CFD 94-01 PROPOSED
ANNEXATION AREA