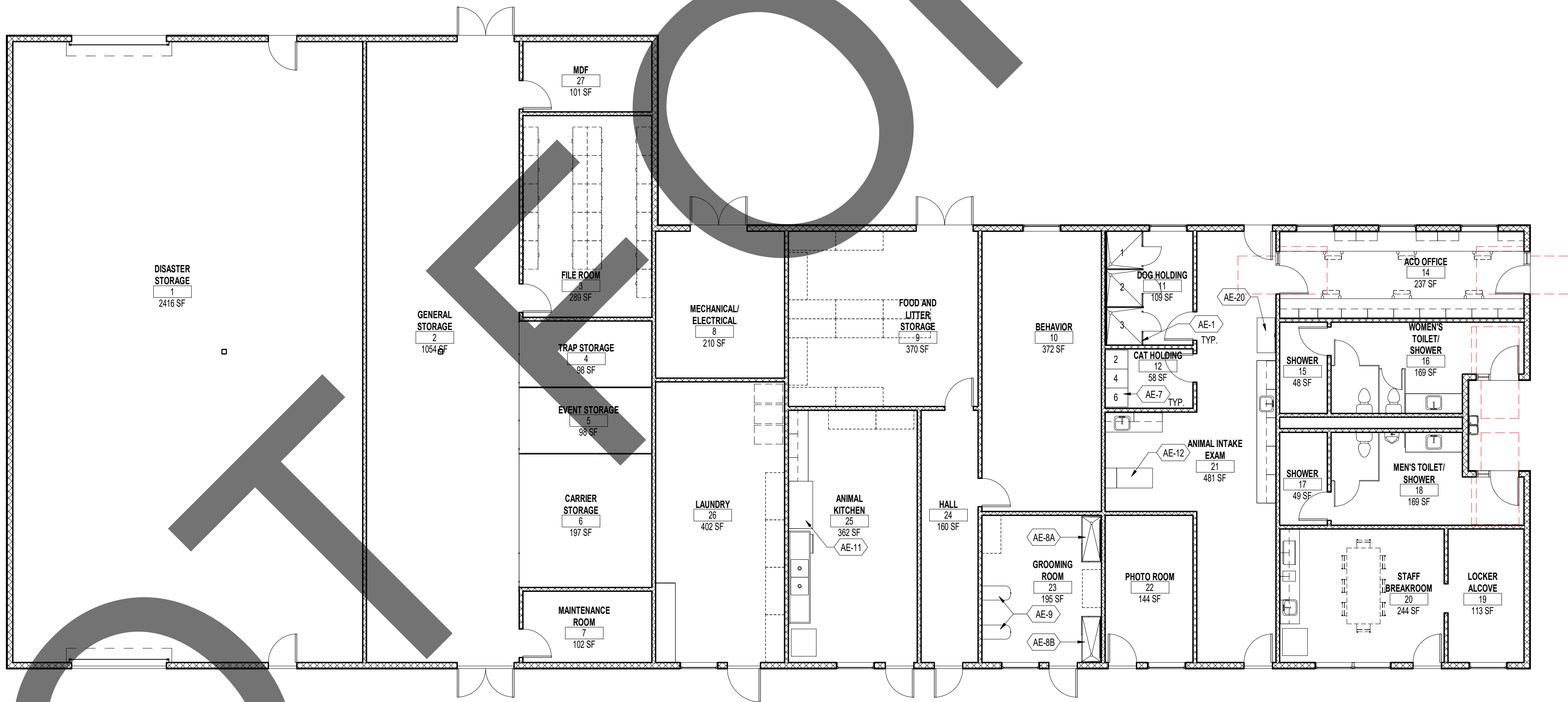


1 ANIMAL EQUIPMENT PLAN - SUPPORT BUILDING
1/8" = 1'-0"



FOR ANIMAL EQUIPMENT LEGEND AND GENERAL NOTES REFER TO SEET AE1



architecture
interiors
planning



1177 Idaho Street, Suite 200
Redlands, CA 92374
Phone: 909-335-7400
Fax: 909-335-7299
info@millar-aip.com

owner approval

initials	date	phase

revisions/addenda

#	Date	Comment
---	------	---------

ANIMAL CARE CENTER

18313 VALLEY BLVD. BLOOMINGTON, CA 92313

SAN BERNARDINO COUNTY

project information

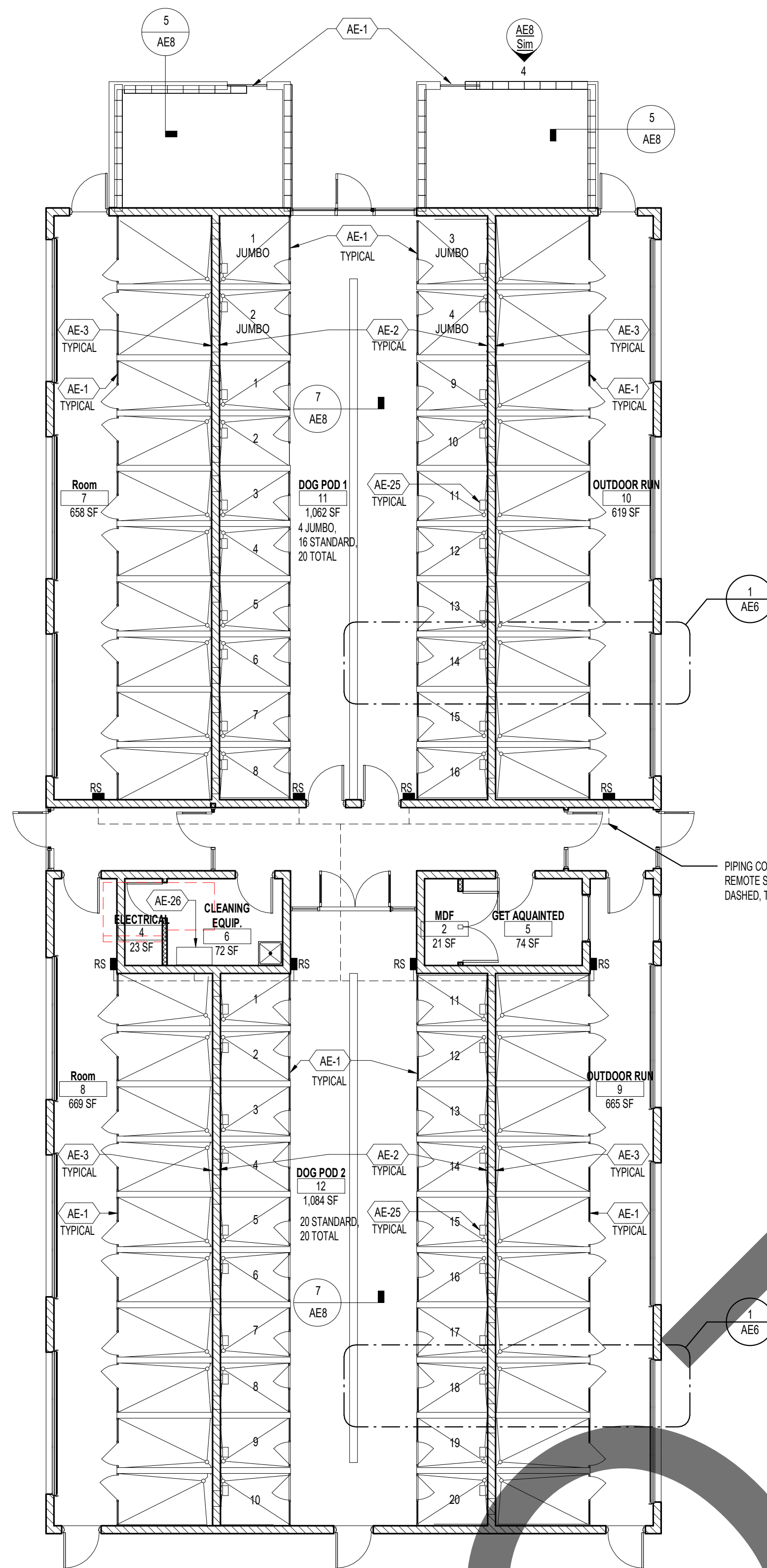
Project Number:	2200065
Drawn By:	AE
Checked By:	MB
Issue Date:	11/14/23

sheet name

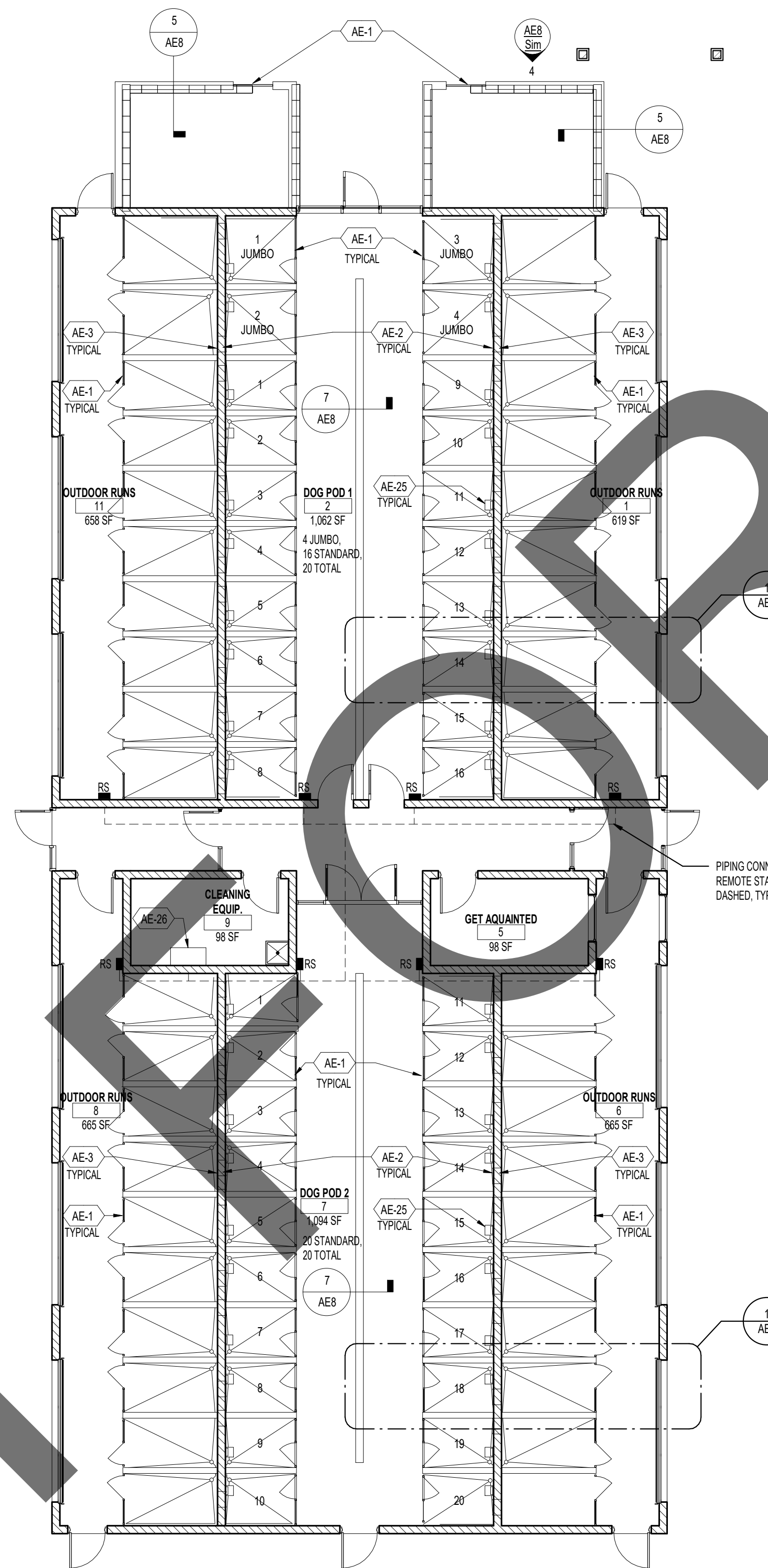
ANIMAL
EQUIPMENT
PLAN

sheet number

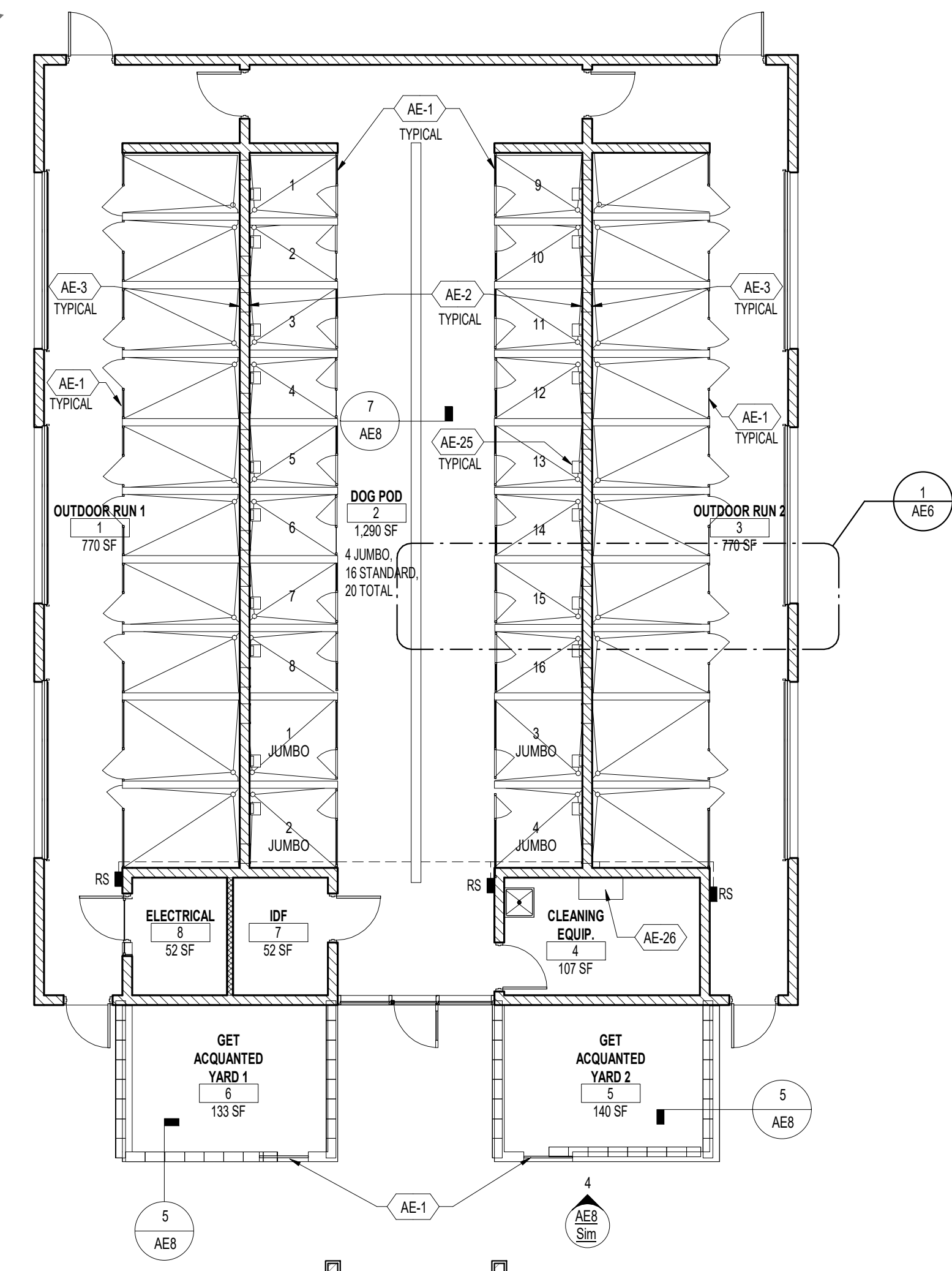
AE3



1 ANIMAL EQUIPMENT PLAN - ADOPTION DOGS BUILDINGS 1, 2, 3, & 4
1/8" = 1'-0"



2 ANIMAL EQUIPMENT PLAN - STRAY DOGS BUILDING
1/8" = 1'-0"



3 ANIMAL EQUIPMENT PLAN - SUPPORT BUILDING
1/8" = 1'-0"

FOR ANIMAL EQUIPMENT LEGEND AND GENERAL NOTES REFER TO SEET AE1



architecture
interiors
planning



1177 Idaho Street, Suite 200
Redlands, CA 92374
Phone: 909-335-7400
Fax: 909-335-7299
info@miller-aip.com

owner approval

initials	date	phase

revisions/addenda

#	Date	Comment
---	------	---------

ANIMAL CARE CENTER

18313 VALLEY BLVD. BLOOMINGTON, CA 92313

SAN BERNARDINO COUNTY

project information

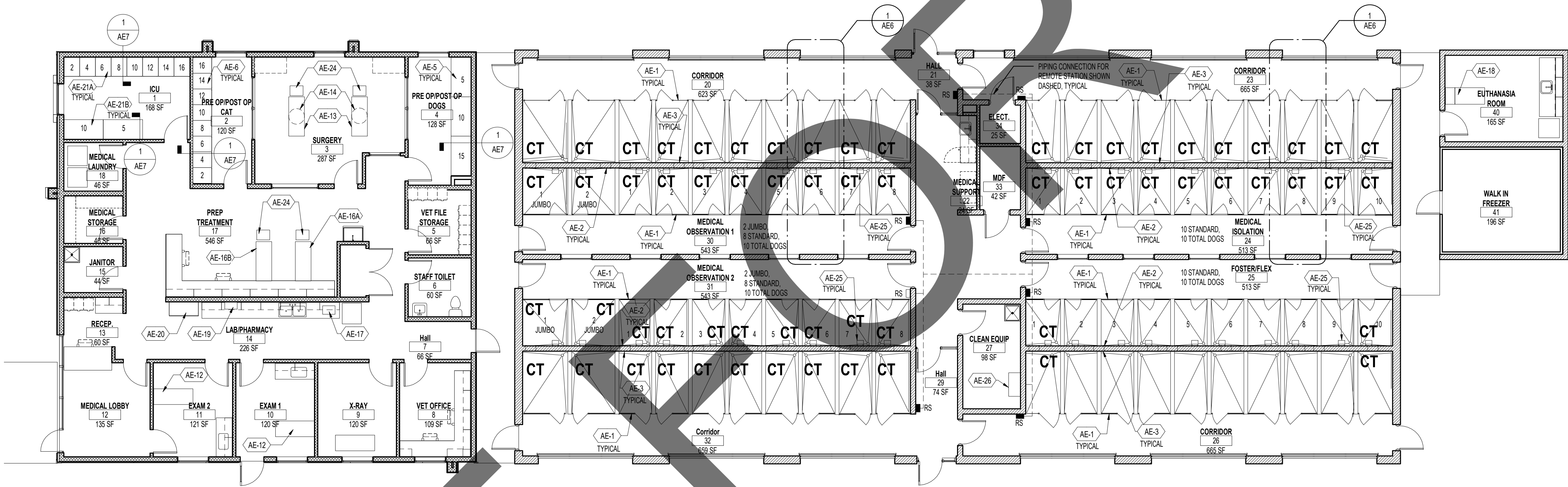
Project Number:	2200065
Drawn By:	AE
Checked By:	MB
Issue Date:	11/14/23

sheet name

ANIMAL
EQUIPMENT
PLAN

sheet number

AE4
Sheet Of Sheets



1 ANIMAL EQUIPMENT PLAN - MEDICAL BUILDING
1/8" = 1'-0"

FOR ANIMAL EQUIPMENT LEGEND AND GENERAL NOTES REFER TO SEET AE1



architecture
interiors
planning



1177 Idaho Street, Suite 200
Redlands, CA 92374
Phone: 909-335-7400
Fax: 909-335-7299
info@miller-aip.com

owner approval

initials	date	phase

revisions/addenda

#	Date	Comment
---	------	---------

ANIMAL CARE CENTER

18313 VALLEY BLVD. BLOOMINGTON, CA 92313

SAN BERNARDINO COUNTY

project information

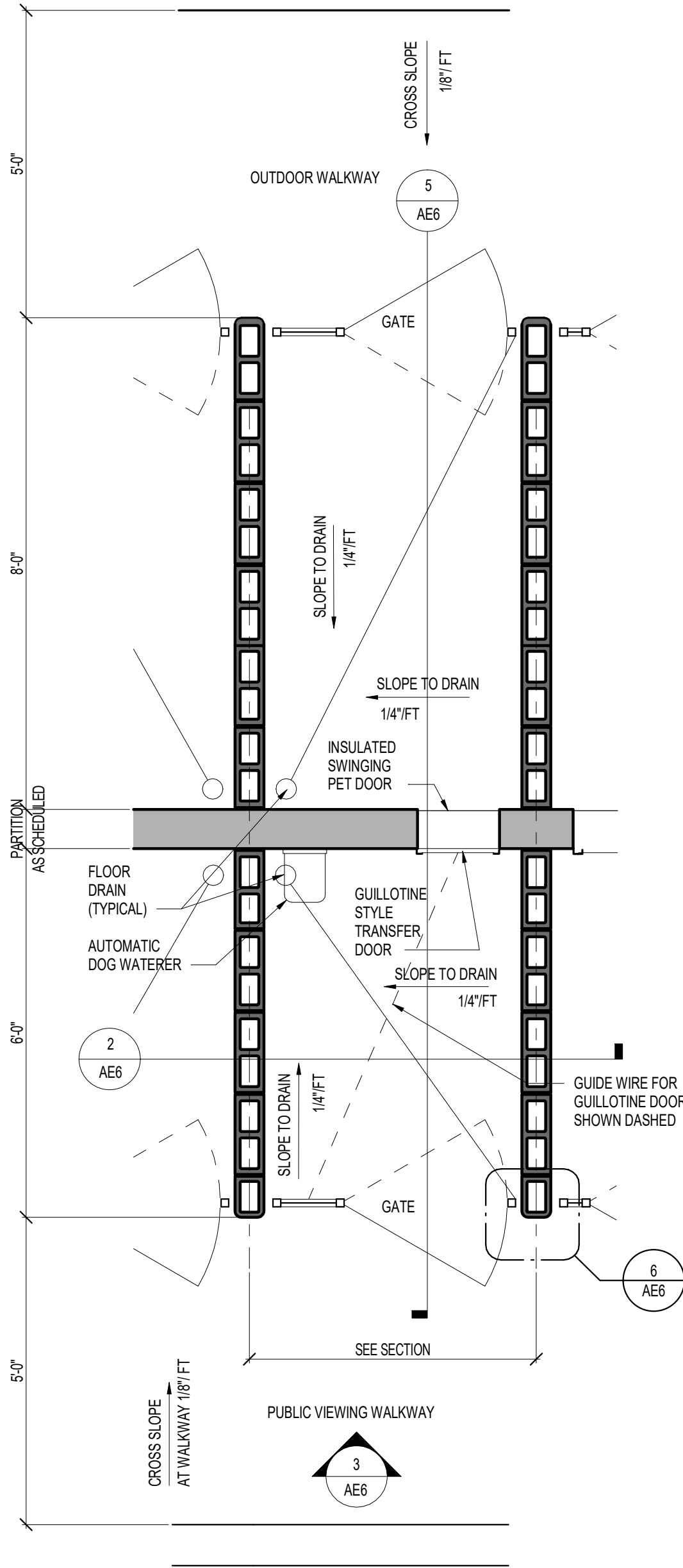
Project Number:	2200065
Drawn By:	AE
Checked By:	MB
Issue Date:	11/14/23

sheet name

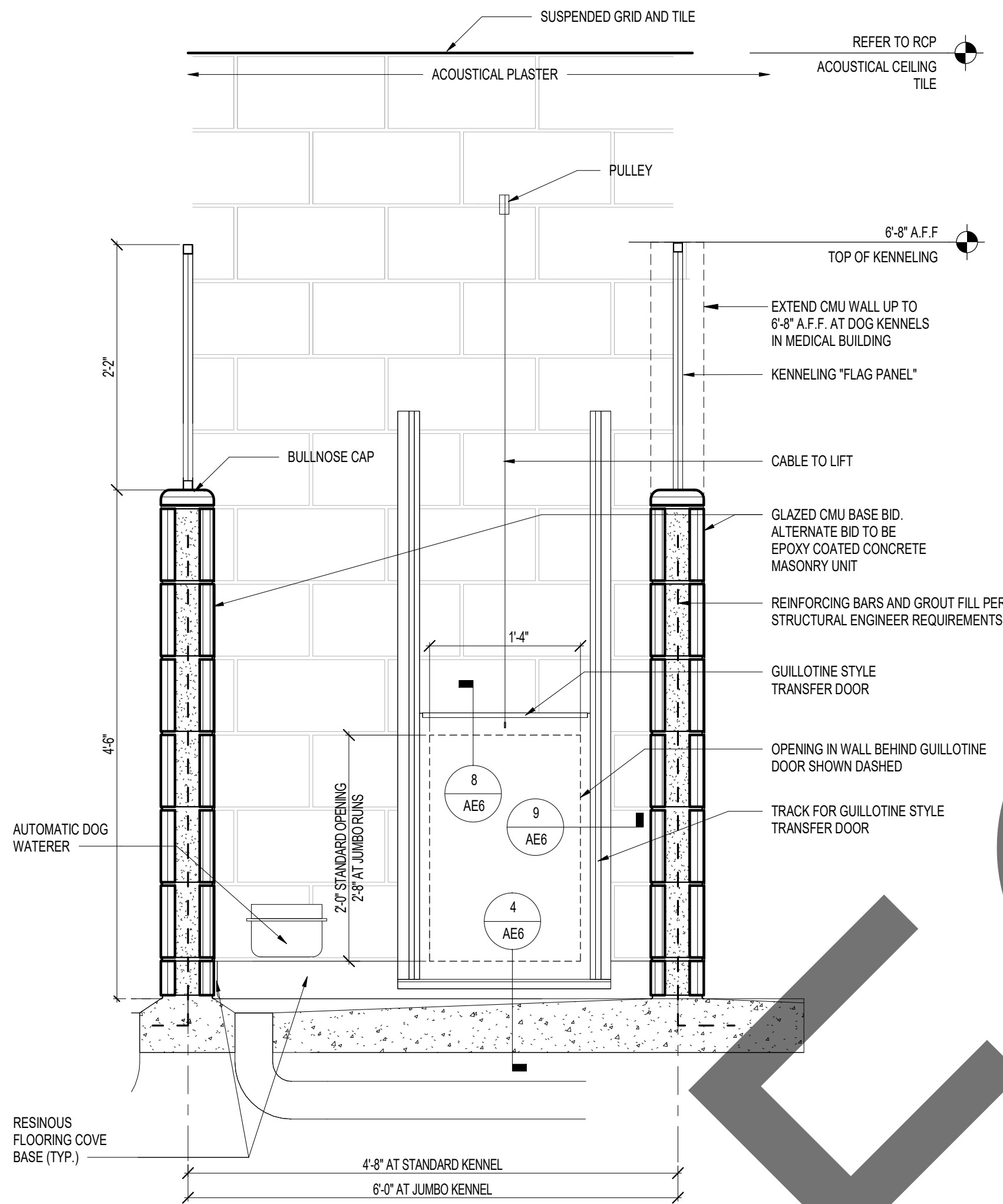
ANIMAL
EQUIPMENT
PLAN

sheet number

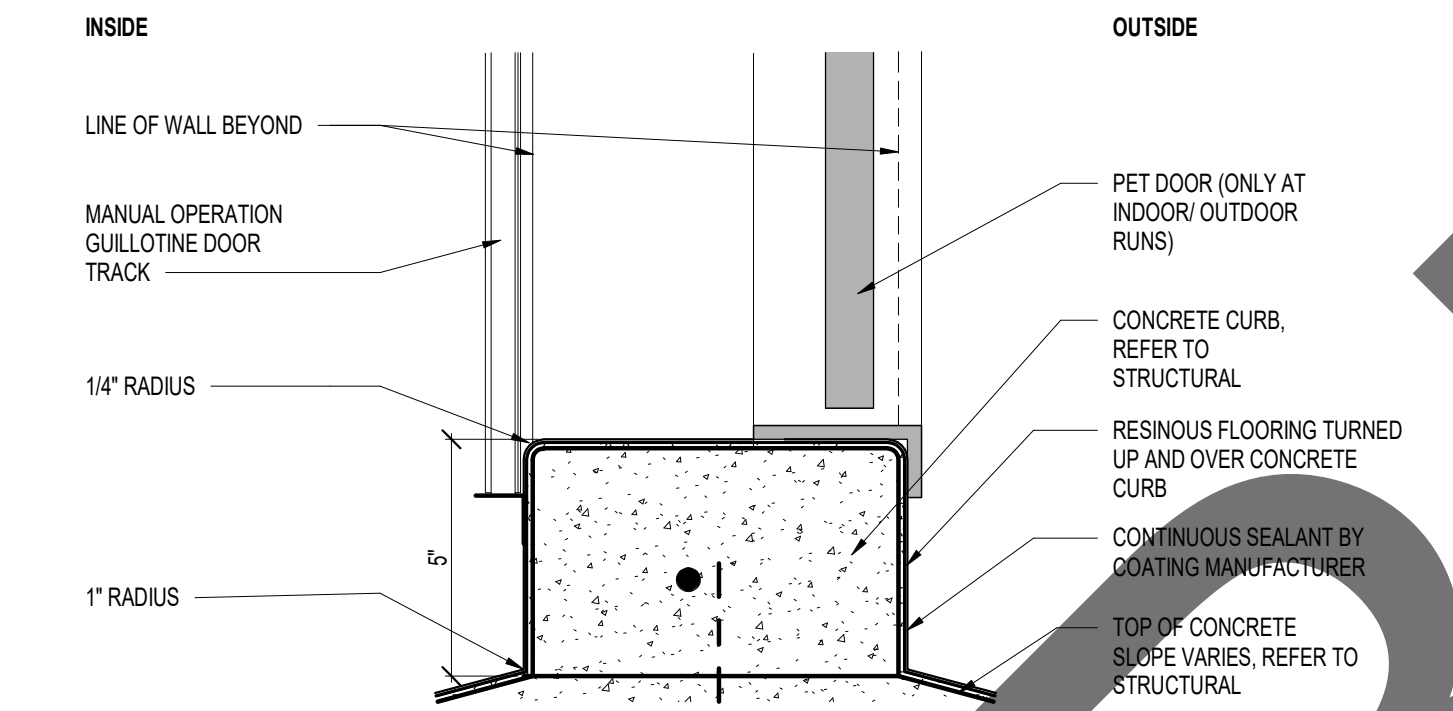
AE5



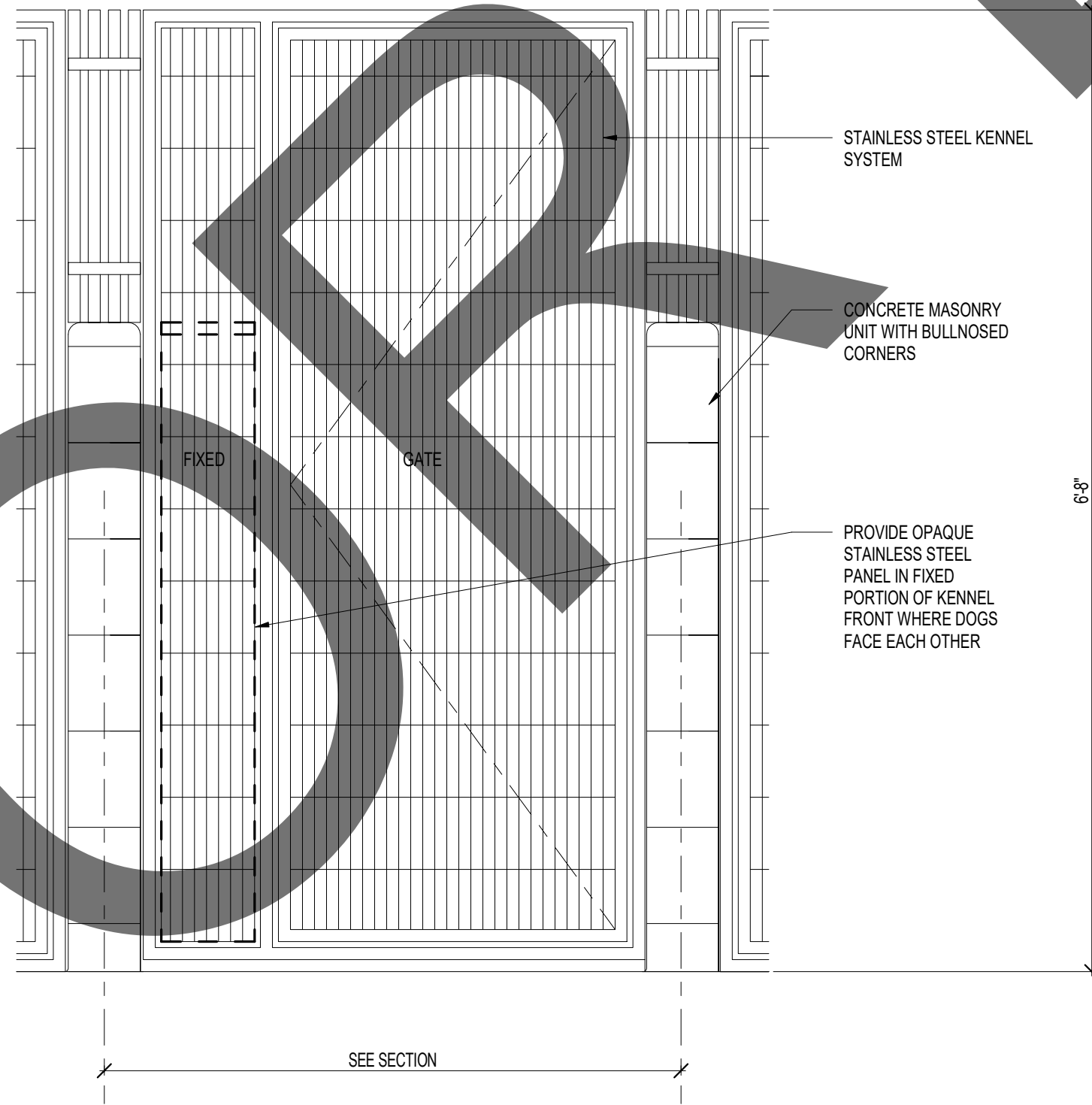
1 ENLARGED FLOOR PLAN AT DOG KENNEL
1/2" = 1'-0"



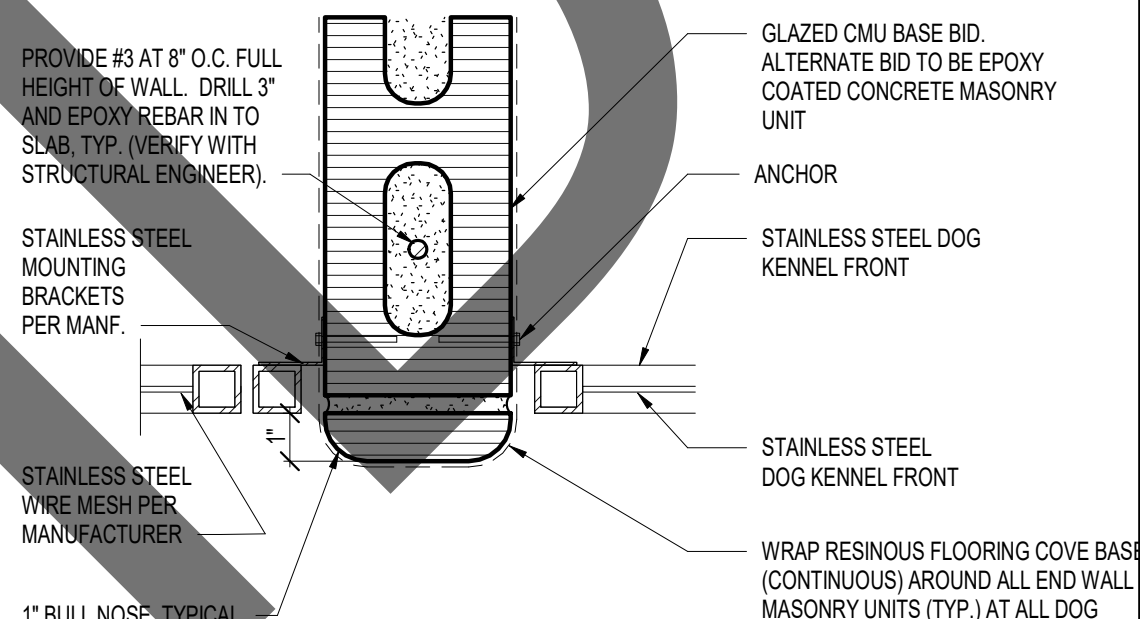
2 SECTION AT DOG KENNEL
1" = 1'-0"



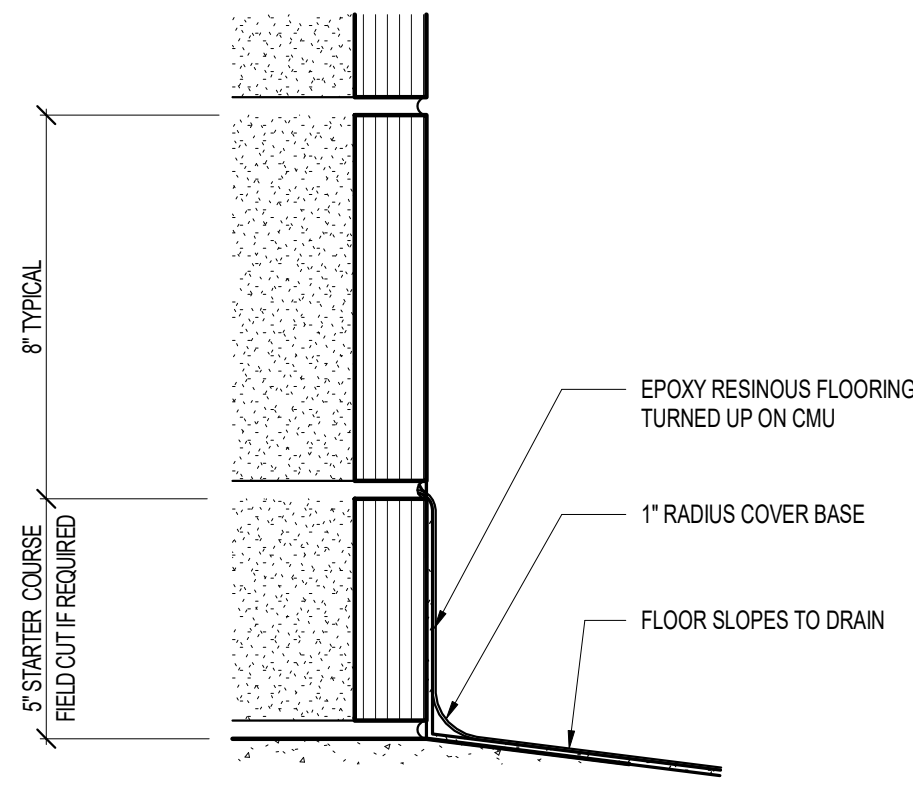
4 SILL DETAILS
3" = 1'-0"



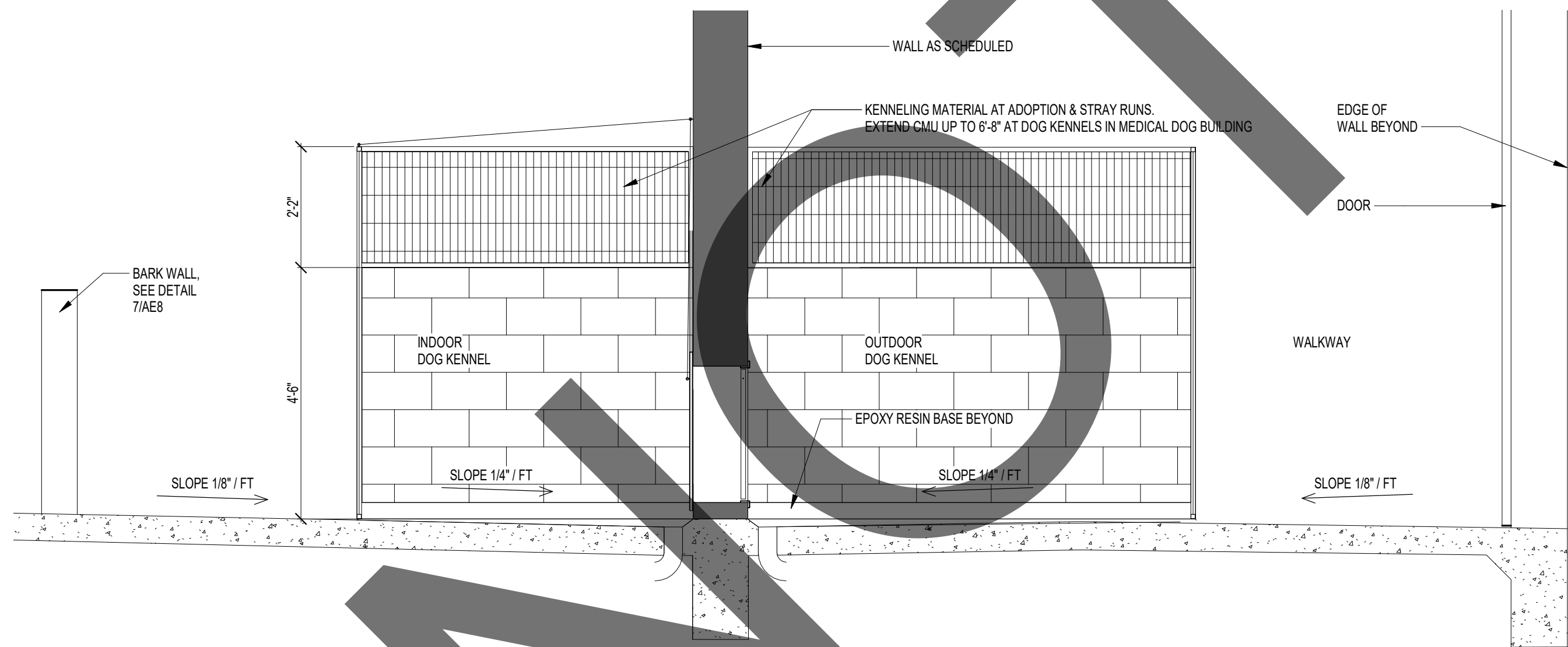
3 ELEVATION AT FRONT OF DOG KENNEL
1" = 1'-0"



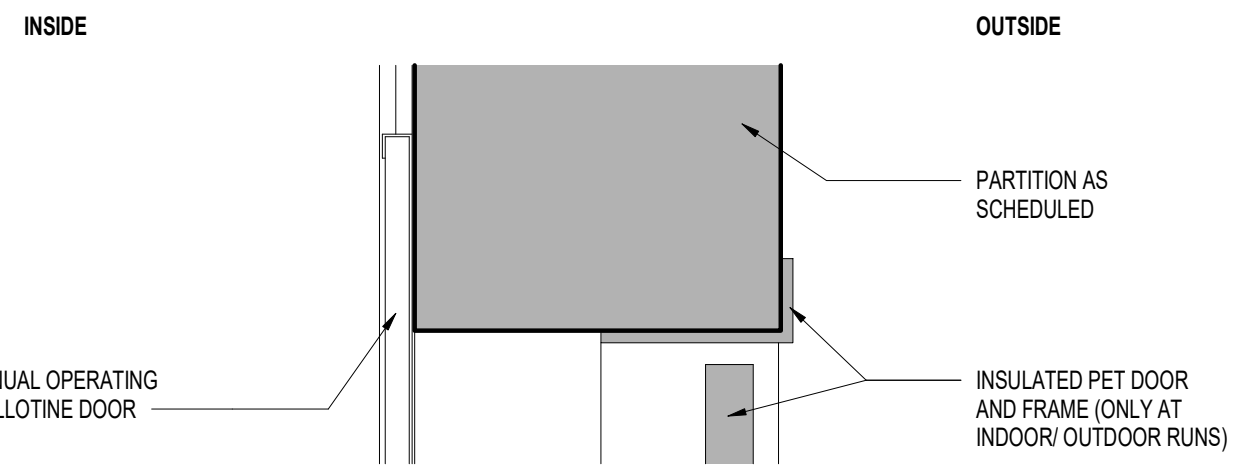
6 DOG KENNEL DETAIL AT MASONRY WALLS
3" = 1'-0"



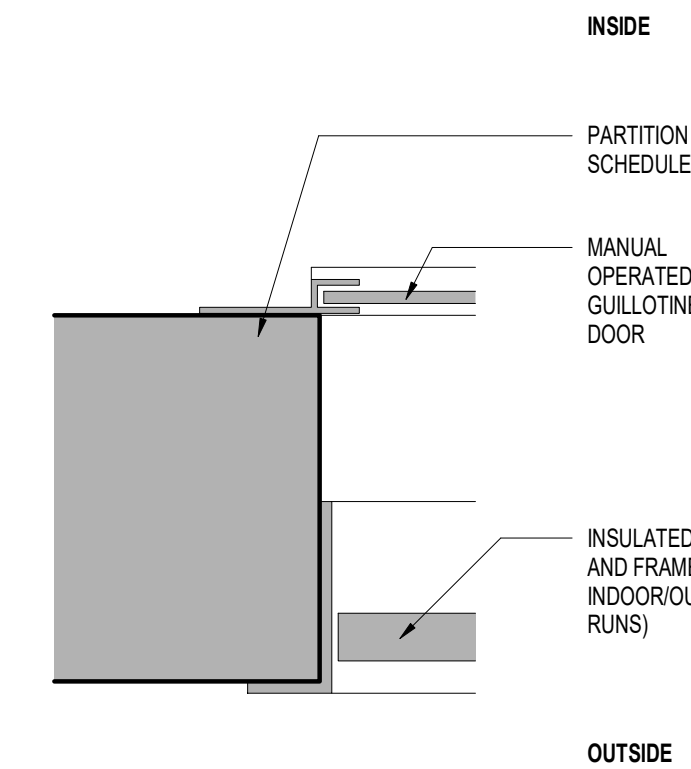
7 BASE OF WALL DETAIL
3" = 1'-0"



5 SECTION THROUGH KENNEL
1/2" = 1'-0"



8 HEAD OF TRANSFER DETAIL
3" = 1'-0"



9 JAMB DETAILS
3" = 1'-0"



architecture
interiors
planning



1177 Idaho Street, Suite 200
Redlands, CA 92374
Phone: 909-335-7400
Fax: 909-335-7299
info@miller-aip.com

owner approval

initials	date	phase

revisions/addenda

#	Date	Comment
---	------	---------

ANIMAL CARE CENTER

18313 VALLEY BLVD. BLOOMINGTON, CA 92313

SAN BERNARDINO COUNTY

project information

Project Number: 2200065
Drawn By: AE
Checked By: MB
Issue Date: 11/14/23

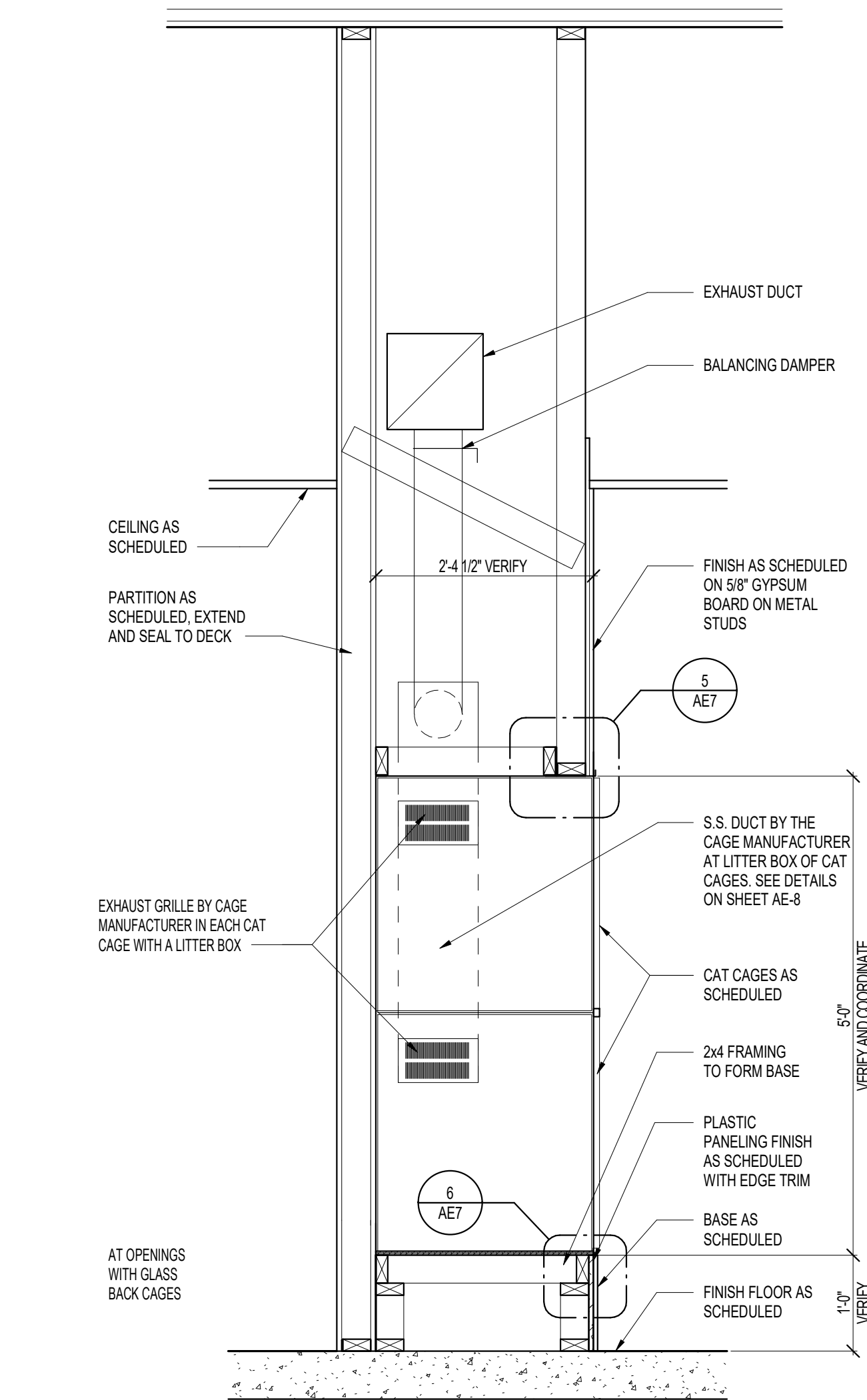
sheet name

ANIMAL
EQUIPMENT
DETAILS

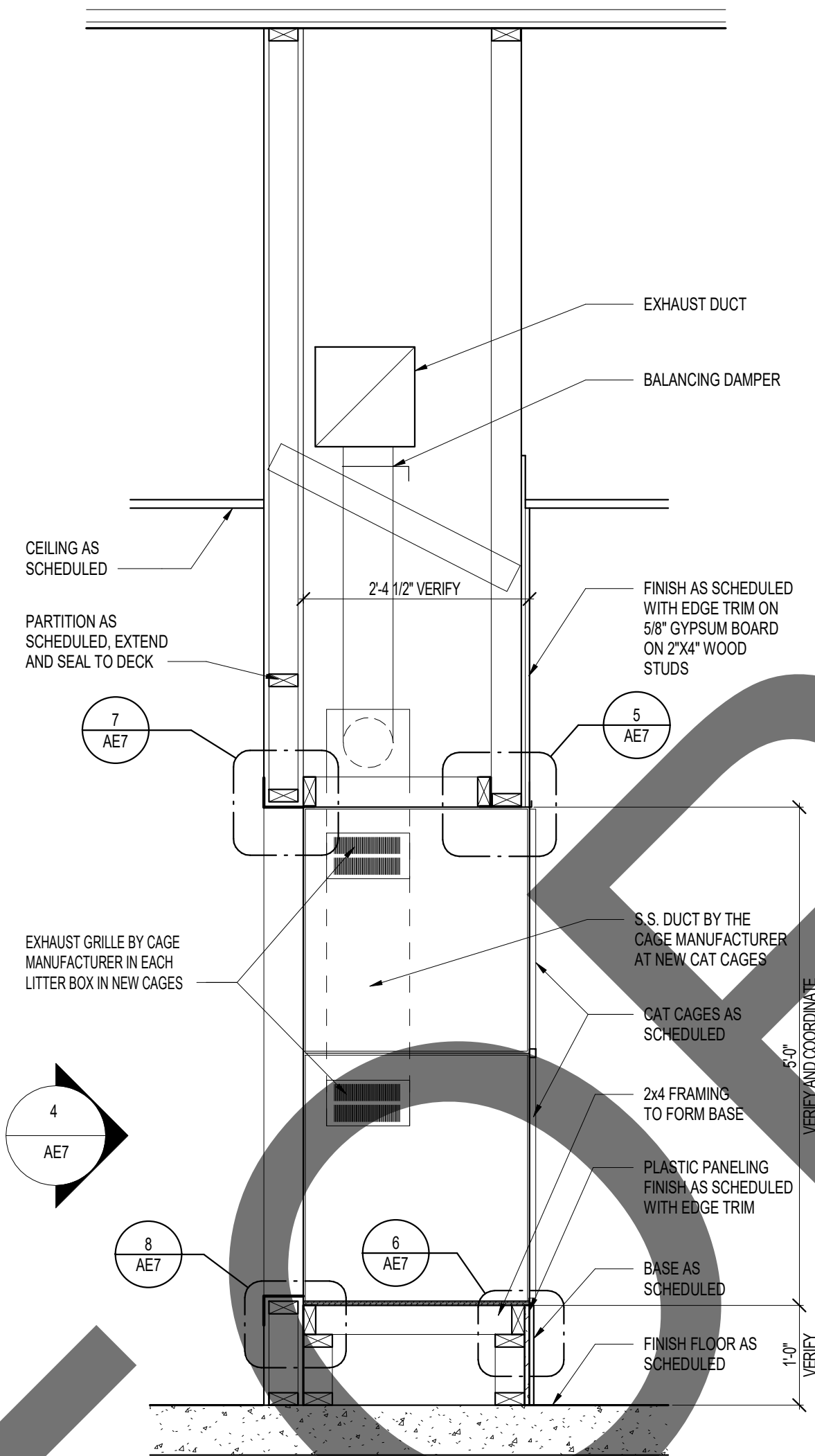
sheet number

AE6

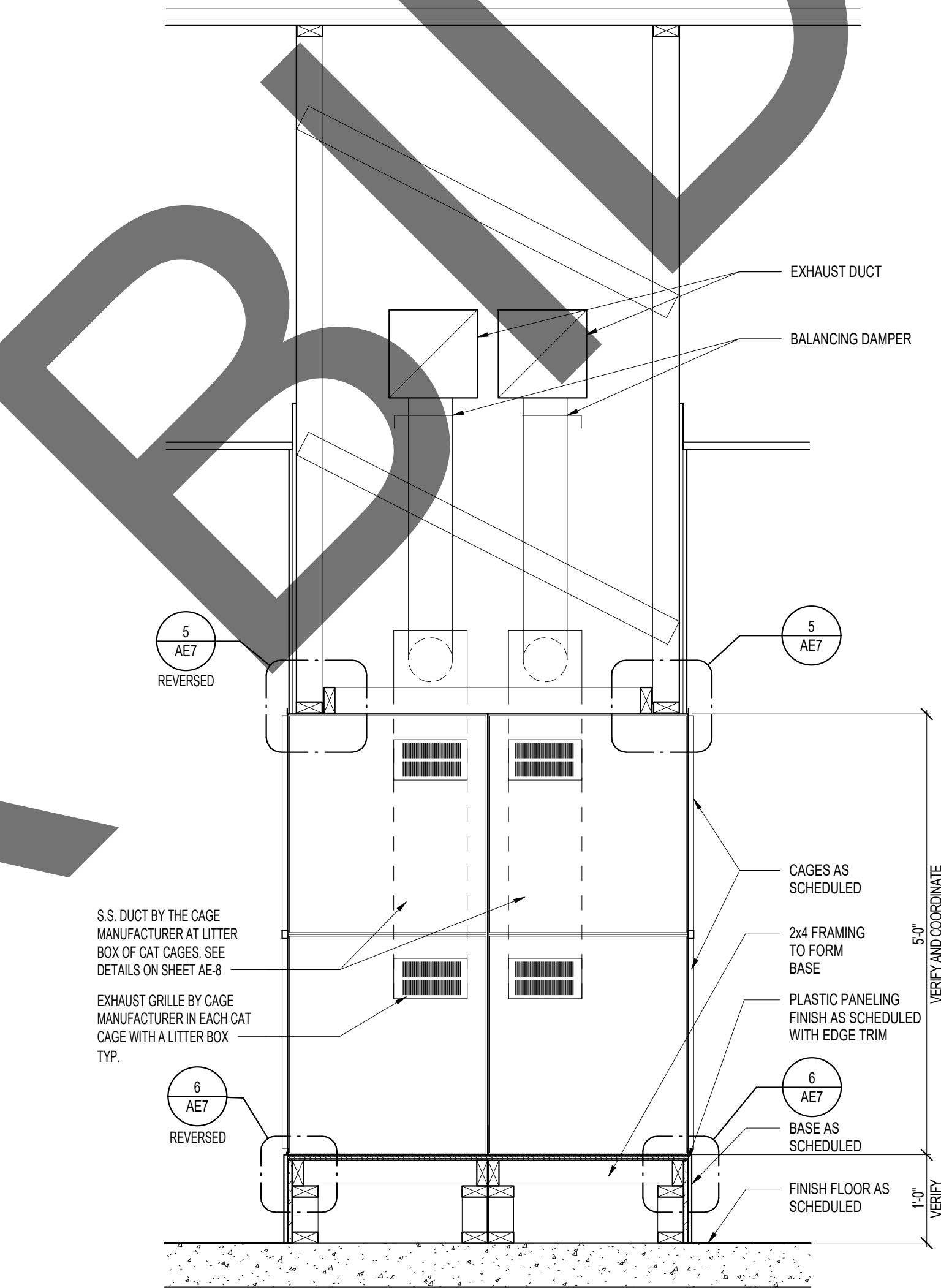
Sheet Of Sheets



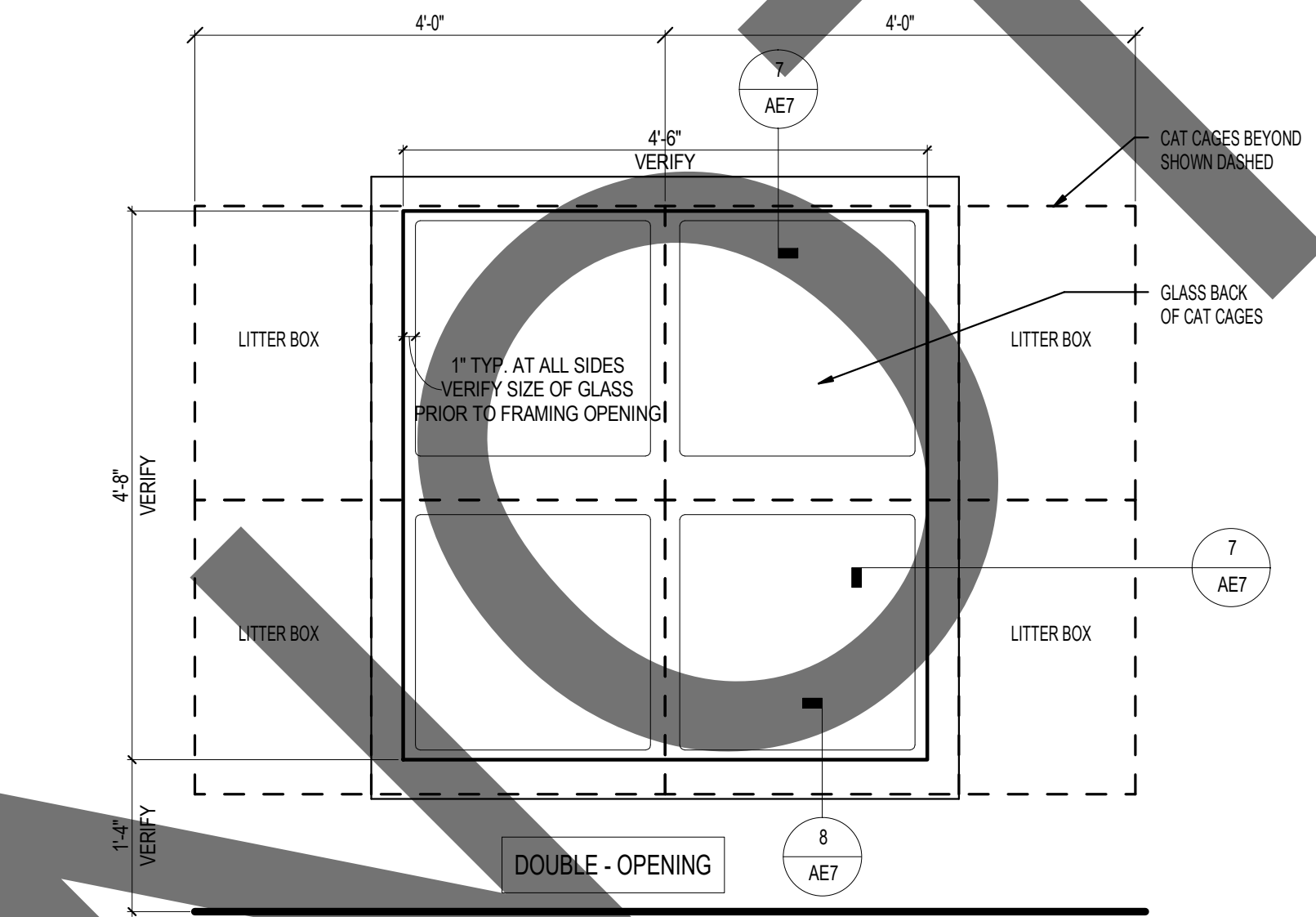
1 RECESSED CAGE SECTION
3/4" = 1'-0"



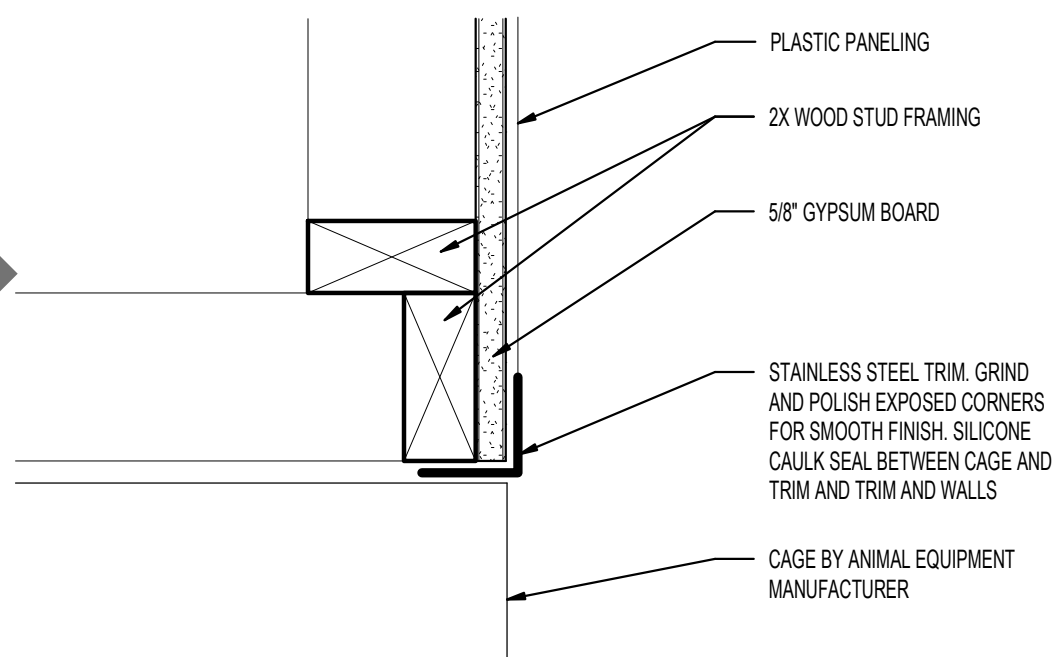
2 RECESSED CAGES WITH GLASS BACKS SECTION
3/4" = 1'-0"



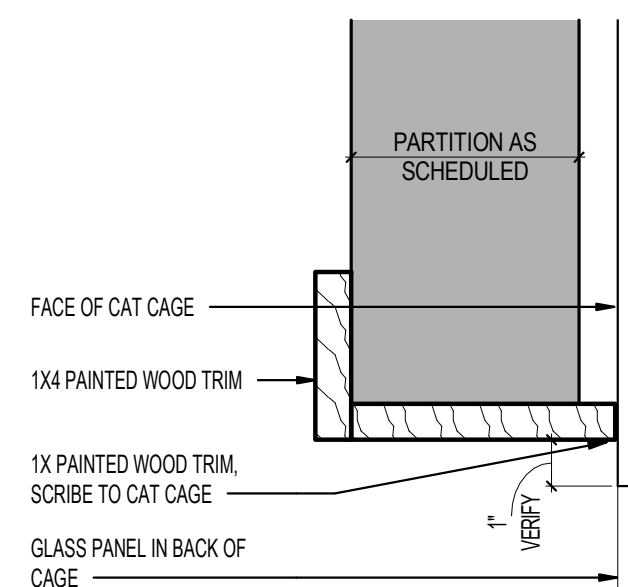
3 BACK TO BACK RECESSED CAGES SECTION
3/4" = 1'-0"



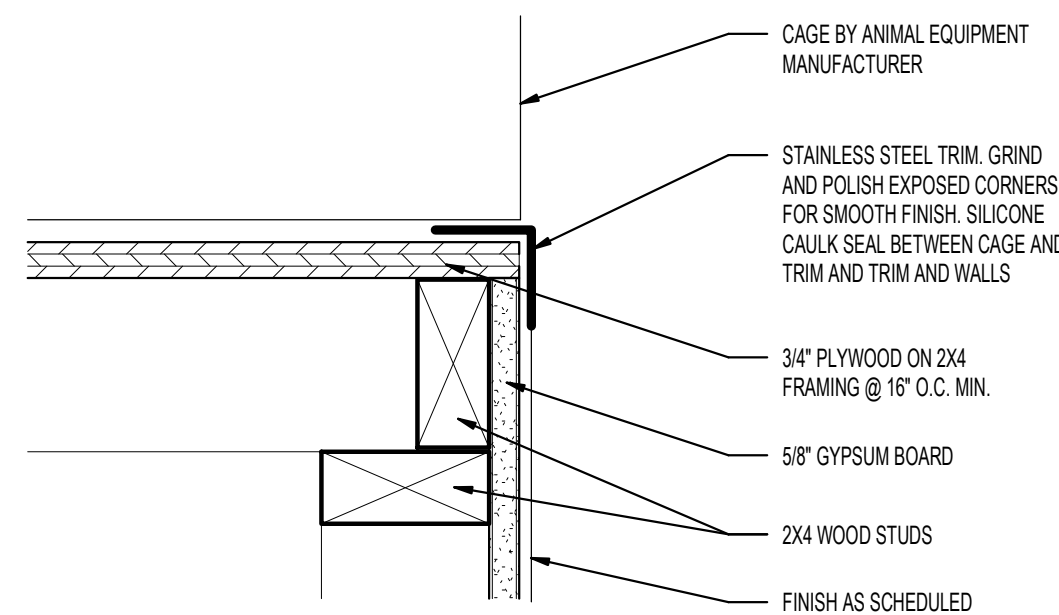
4 CAT CAGE VIEW WINDOW ELEVATION
3/4" = 1'-0"



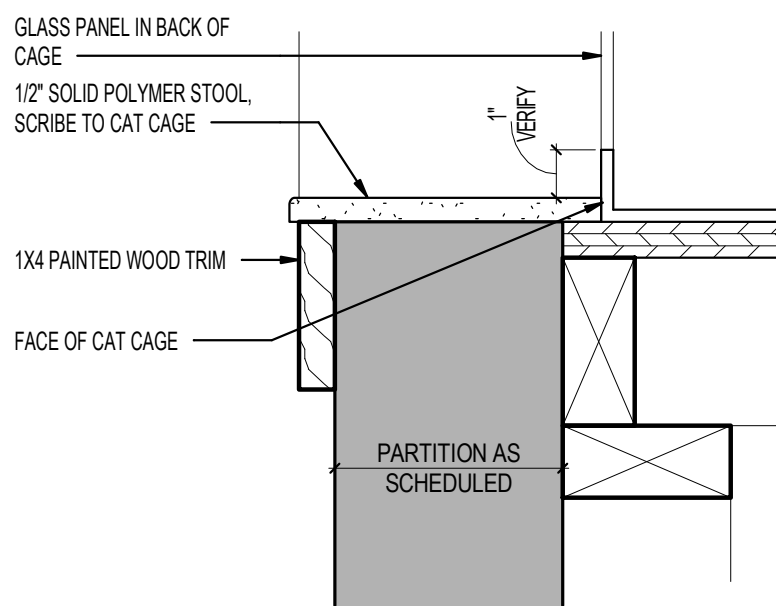
5 HEAD AND JAMB AT CAT CAGE
3" = 1'-0"



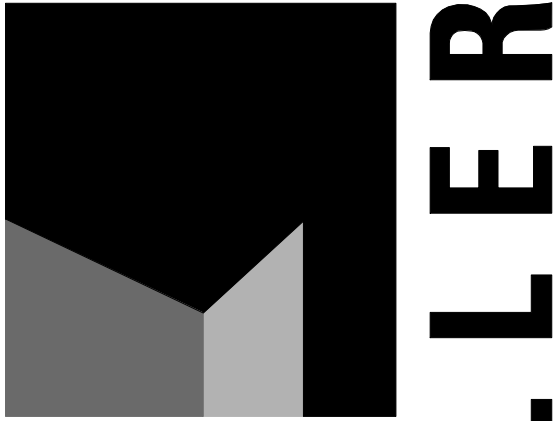
7 CAT CAGE VIEW WINDOW HEAD AND JAMB
3" = 1'-0"



6 CAT CAGE SILL
3" = 1'-0"



8 CAT CAGE VIEW WINDOW SILL
3" = 1'-0"



architecture
interiors
planning



1177 Idaho Street, Suite 200
Redlands, CA 92374
Phone: 909-335-7400
Fax: 909-335-7299
info@miller-aip.com

owner approval

initials	date	phase

revisions/addenda

#	Date	Comment
---	------	---------

ANIMAL CARE CENTER

18313 VALLEY BLVD. BLOOMINGTON, CA 92313

SAN BERNARDINO COUNTY

project information

Project Number:	2200065
Drawn By:	AE
Checked By:	MB
Issue Date:	11/14/23

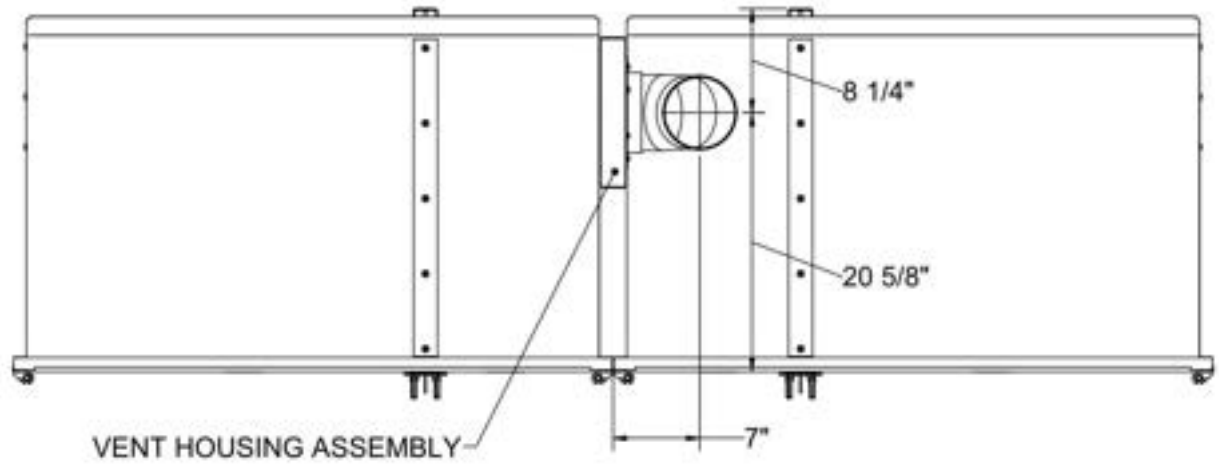
sheet name

ANIMAL
EQUIPMENT
DETAILS

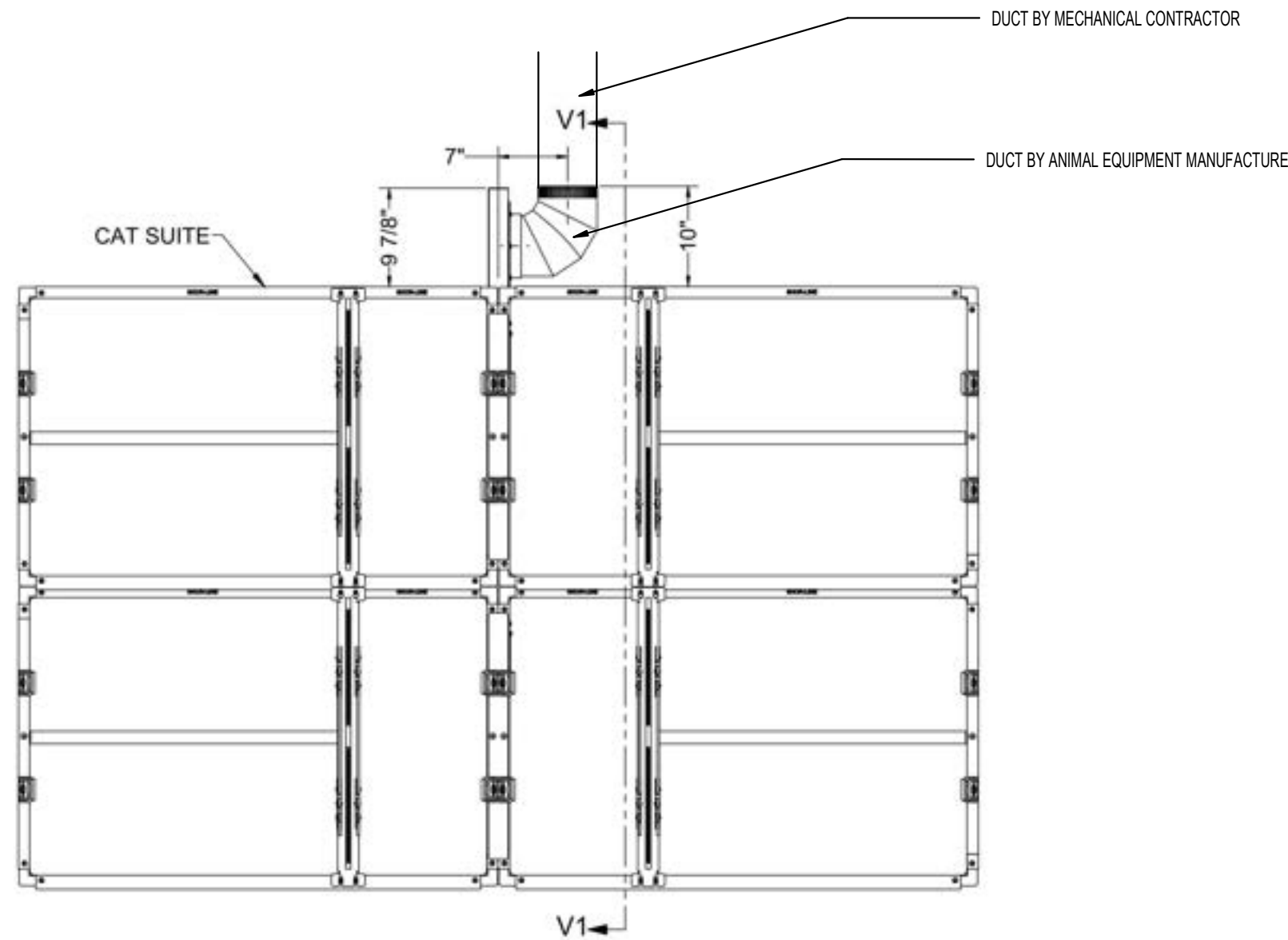
sheet number

AE7

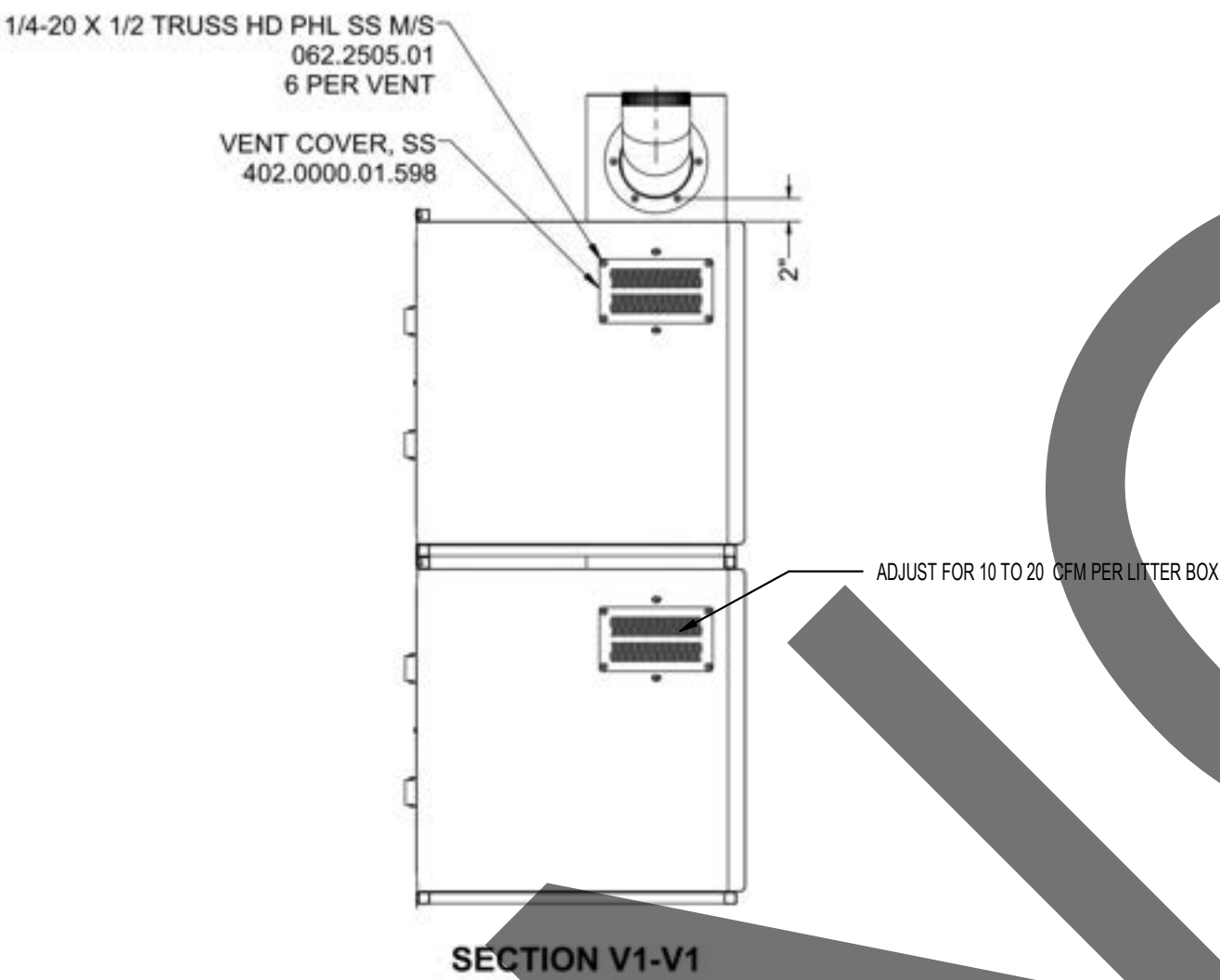
Sheet Of Sheets



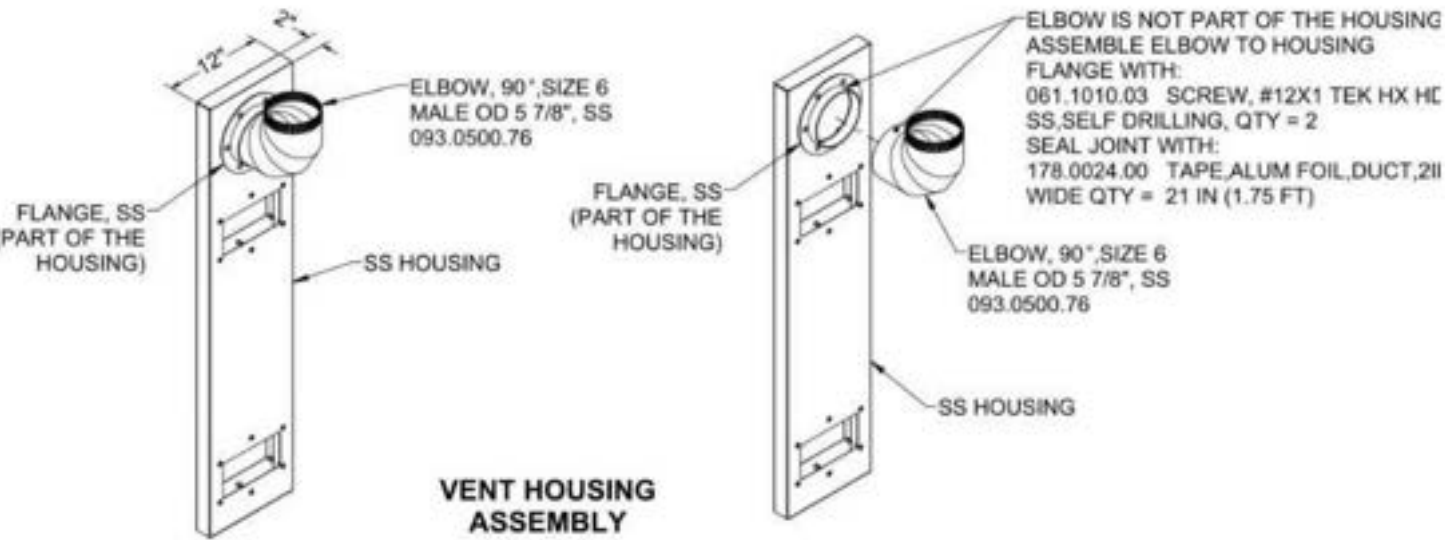
1 SHOR-LINE CAGE VENTILATION DETAIL FOR NEW CAGES
1" = 40'-0"



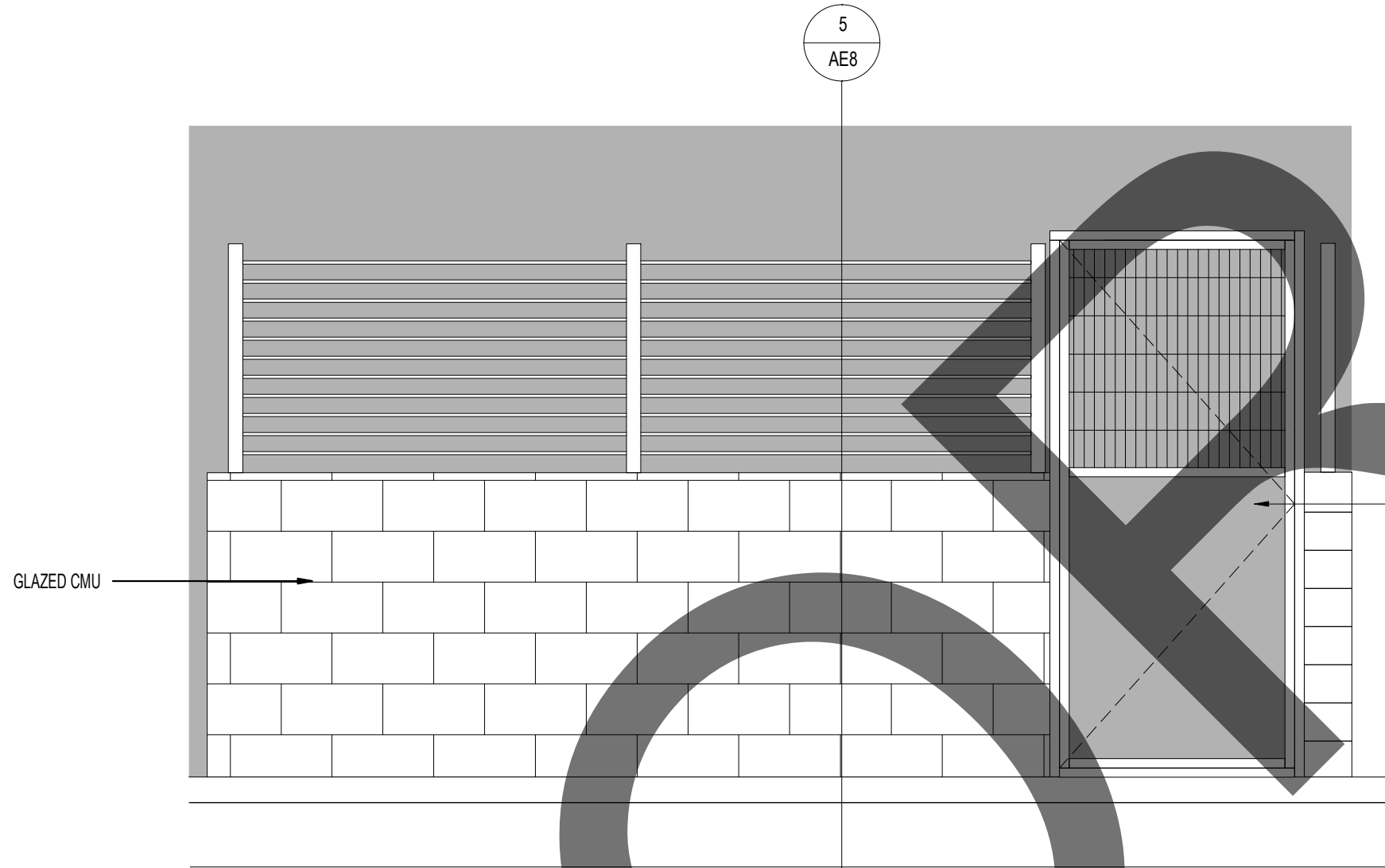
3 SHORE-LINE CAT VENTILATION DETAIL FOR NEW CAT CAGES
1/8" = 1'-0"



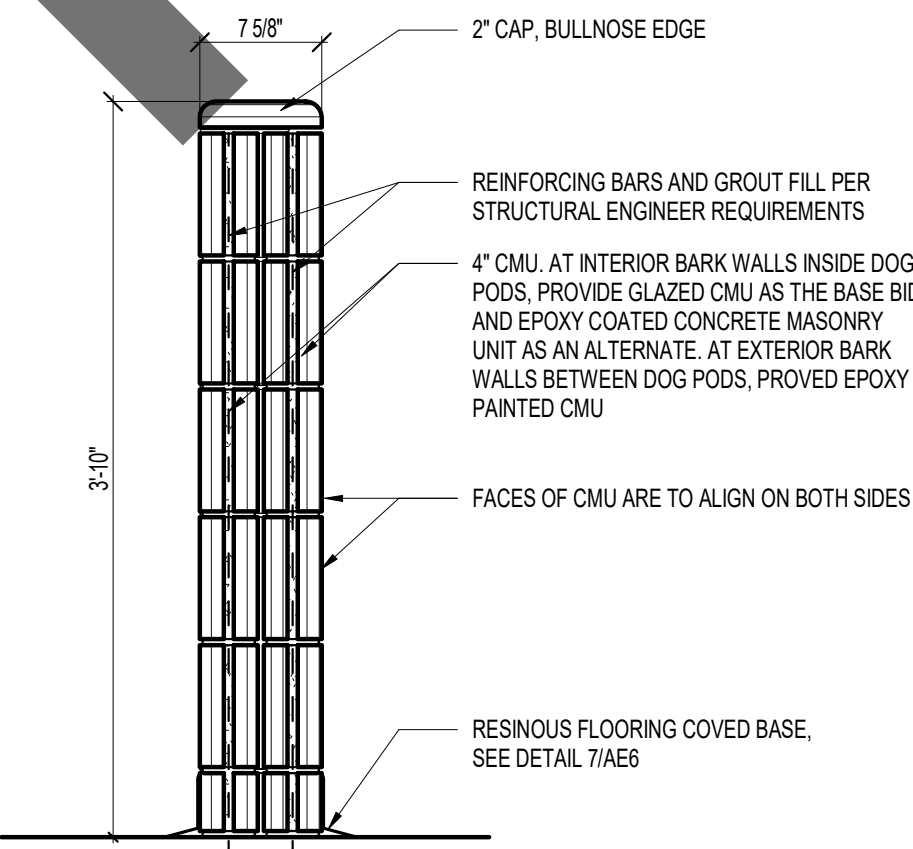
6 SHORE-LINE VENTILATION DETAIL FOR NEW CAT CAGES
1/8" = 1'-0"



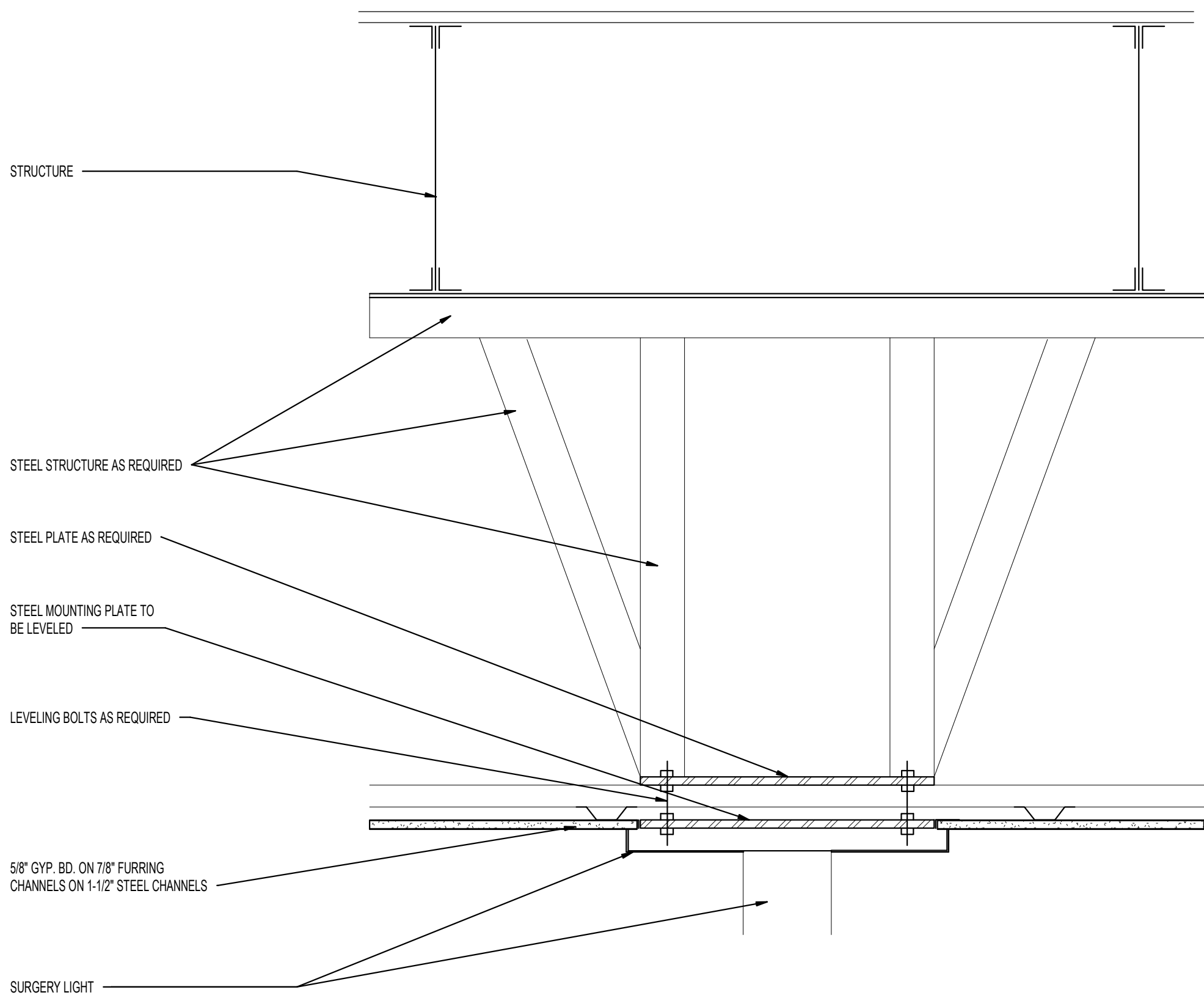
2 SHORE-LINE VENTILATION DETAILS FOR NEW CAT CAGES
1/2" = 1'-0"



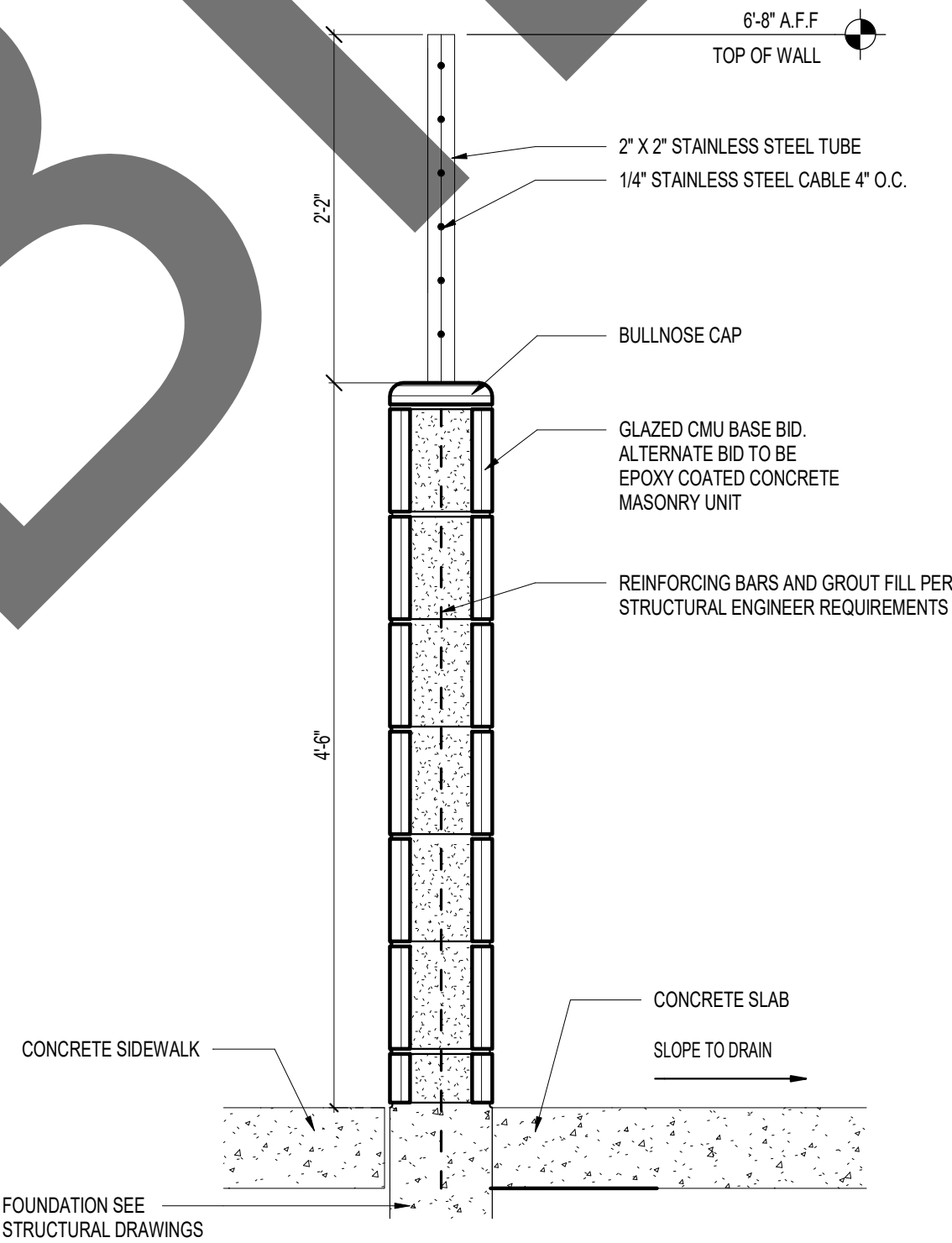
4 ELEVATION
1/2" = 1'-0"



7 BARK WALL DETAIL
1" = 1'-0"



8 SURGERY LIGHT MOUNTING DETAIL
1 1/2" = 1'-0"



5 GET AQUAINTED YARD ENCLOSURE DETAIL
1" = 1'-0"



architecture
interiors
planning



1177 Idaho Street, Suite 200
Redlands, CA 92374
Phone: 909-335-7400
Fax: 909-335-7299
info@miller-aip.com

owner approval

initials	date	phase

revisions/addenda

#	Date	Comment
---	------	---------

ANIMAL CARE CENTER

18313 VALLEY BLVD. BLOOMINGTON, CA 92313

SAN BERNARDINO COUNTY

project information

Project Number:	2200065
Drawn By:	AE
Checked By:	MB
Issue Date:	11/14/23

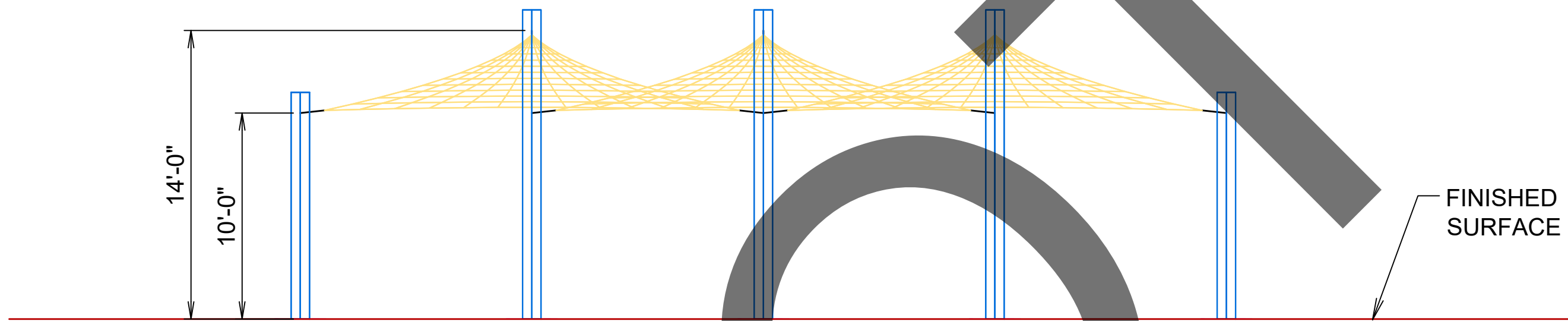
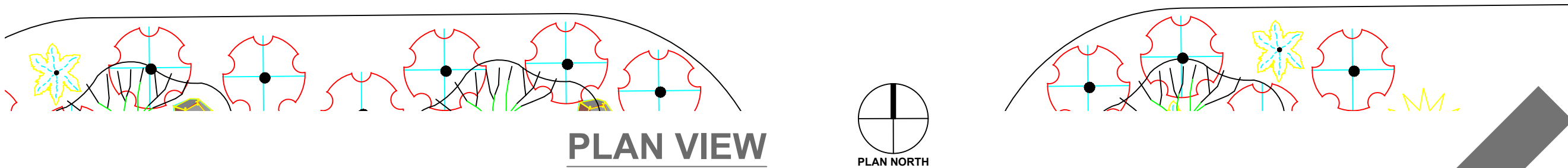
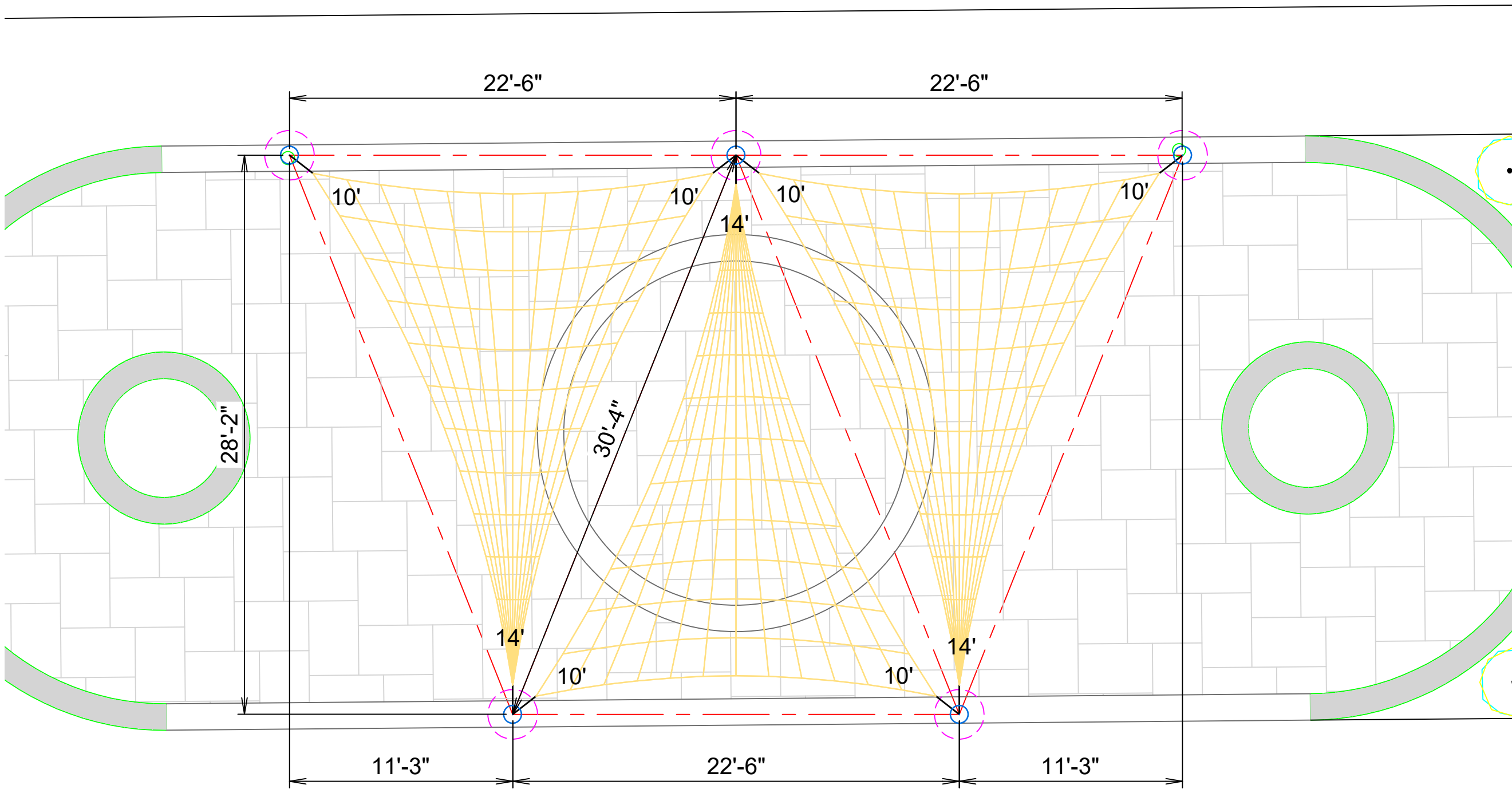
sheet name

ANIMAL
EQUIPMENT
DETAILS

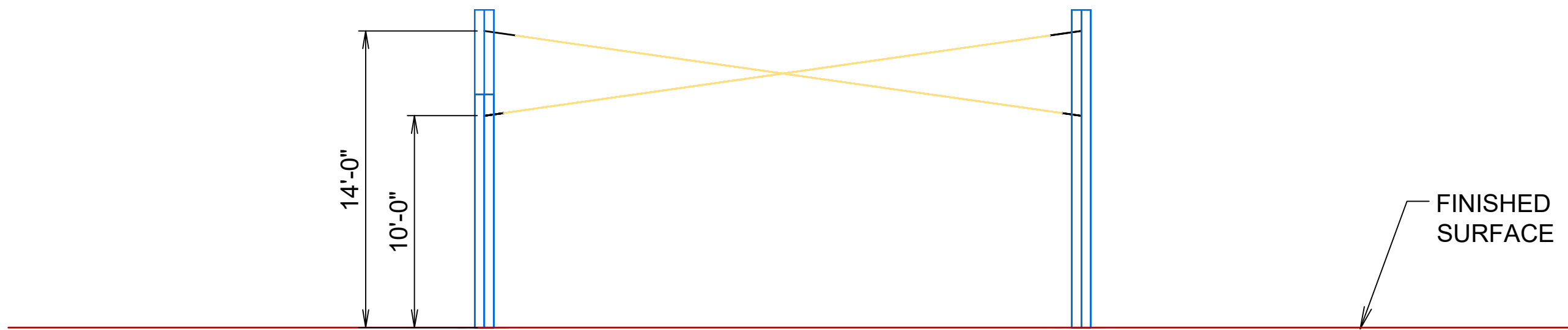
sheet number

AE8

Sheet Of Sheets



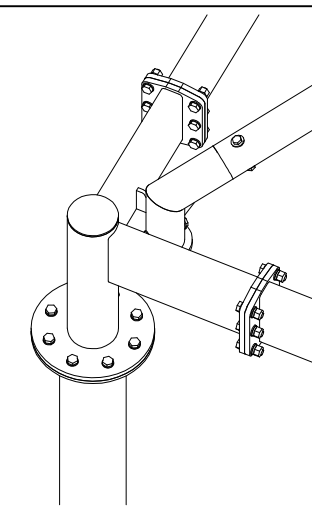
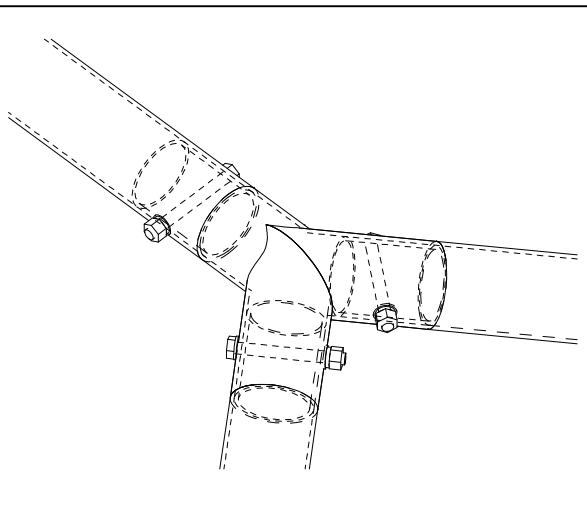
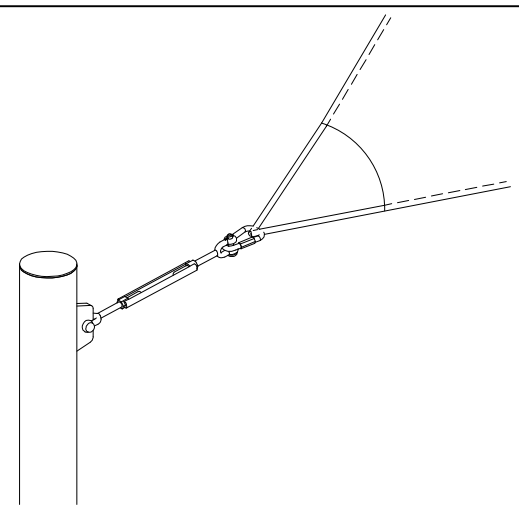
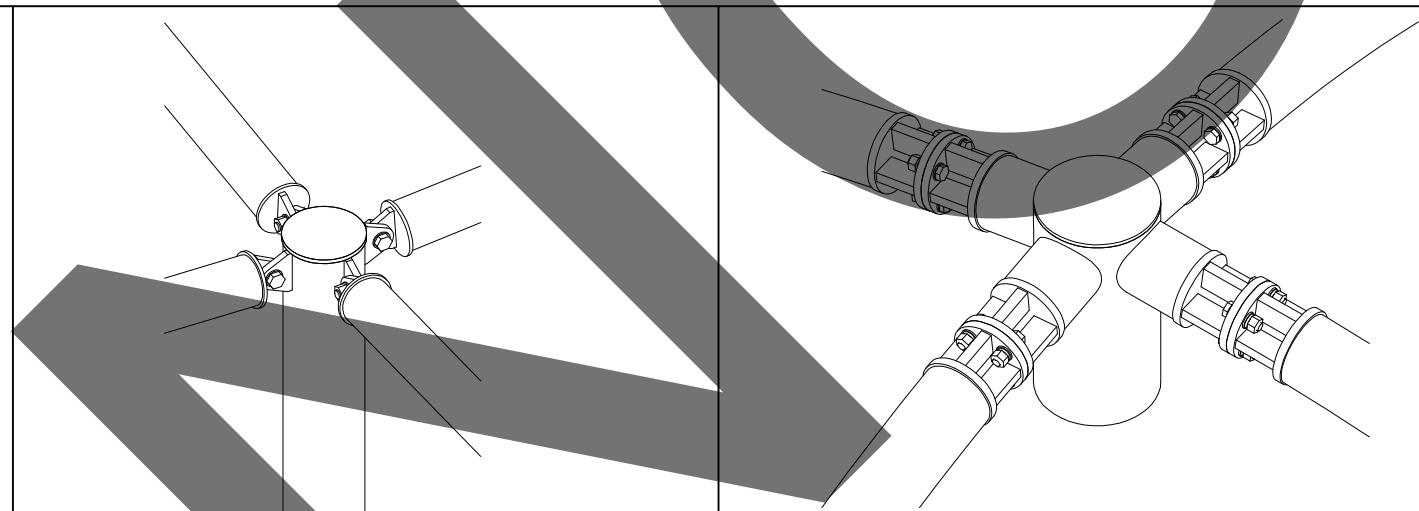
SOUTH ELEVATION



WEST ELEVATION

As manufactured and installed by:
USA SHADE & Fabric Structures.

Contact :
Eric Roys
(909) 927-7567, (800) 966-5005
eric.roys@usa-shade.com



Notes:

- All structures will have bolted connections for shipping and installations purposes.
- Standard details being shown as an example. Final details t.b.d. during final Engineering phase.
- All dimensions and heights must be field verified prior to any final design, fabrication or installation work.

CUSTOMER:
**MILLER
ARCHITECTURE**
PROJECT NAME:
**SAN BERNARDINO
ANIMAL CARE CENTER**
LOCATION:
18313 VALLEY BLVD.
BLOOMINGTON, CA 92316

STRUCTURE TYPE:
JOINED 3PT SAILS

SIZE:
VARIES

THESE PLANS AND SPECIFICATIONS ARE THE PROPERTY OF
USA SHADE AND FABRIC STRUCTURES
AND SHALL NOT BE REPRODUCED WITHOUT THEIR WRITTEN PERMISSION.



**USASHADE
& Fabric Structures**
CORPORATE HEADQUARTERS
2580 ESTERS BLVD., SUITE 100
DFW AIRPORT, TX 75261
800-966-5005

CERTIFICATIONS:
IAS CERTIFICATION No: FA-428
CLARK COUNTY MANUFACTURER
CERTIFICATION NUMBER (NEVADA): 355

REV	DESCRIPTION	DATE	DRW	CHK	ENG
Drawn By :	AZR	12/14/23			
Checked By :	AZR	12/14/23			
Approved By :	AZR	12/14/23			

DRAWING DESCRIPTION:

VIEWS

DWG.
CA1223ER10128

PAGE
1000

REV.



HARDWARE AND ACCESSORIES:

- (1) 115/60/1 ELECTRICAL
- (1) AIR SHIELD (SHIPS LOADS)
- (1) BELLING CHOP-PAW 80 ACT/CFXCM" 120/230V 50/60HZ W/BATTERY
- BACKUP, PAIN BUTION, DRY CONTACTS, WEATHERPROOF
- (1) DOOR CLOSURE - KASON 1094 (STD)
- (1) HANDLE - KASON 28 WITH LOCKING ASSEMBLY (STD)
- (1) HEATER WIRE, 5 WATT / FT
- (2) HINGE - KASON 1344 BRUSHED CHROME ADJUSTABLE / SPRING ASSISTED (STD)
- (1) LIGHT FIXTURE - KASON 1803 LED W/BULB, GLOBE AND NIGHTLIGHT 120V 50/60HZ (STD)
- (1) RAINHOOD
- (1) RAMP INTERIOR 36X20
- (3) THRESHOLD, STAINLESS STEEL, 14 GA
- 1 UNIT - PRESSURE RELIEF, HANDLE 120V 50/60HZ 4.5/6" THICK (STD)



CONDENSING UNIT ASSEMBLY

Diagram showing the condensing unit assembly with dimensions A, B, and C. The unit is labeled with "AIR INLET" and "SUCTION AND LIQUID LINE".

CLEARANCE REQUIREMENT

Diagram showing the clearance requirement for the condensing unit. The unit is labeled with "SIDE VIEW". The clearance is indicated as 1" (25mm) for the top and 3" (75mm) for the bottom. The unit is labeled with "MINIMUM CLEARANCE REQUIRED FOR PROPER OPERATION" and "3" (75mm) REQUIRED FOR TOP SERVICING".

COVER PLATE

CONDUIT NUT

THERMAL RESISTIVE CONDUIT SUCH AS SCHEDULE 40 PVC

J-BOX (AS NEEDED)

PANEL

LEAD WIRES TO BE PULLED THROUGH CONDUIT

NOTE
FOR OUTDOOR WALK-IN,
DO NOT PENETRATE
CEILING PANELS.

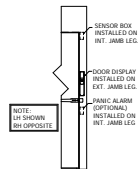


Diagram illustrating the correct method for installing a metal wedge anchor:

- Drill through hole inside CARLOCK pocket into FOUNDATION using 1/2" X 8" CARBIDE DRILL BIT. DO NOT USE IMPACT WRENCHES TO INSTALL INTO HOLLOW CMU. AFTER DRILLING, BLOW DUST OUT OF EACH HOLE USING COMPRESSED AIR.
- DRILL AND ANCHOR SHOULD NOT GOE INTO CONCRETE METAL LOCK PIN.
- 1" FLOOR OR METAL WISHER
- 2" MIN. EXPOSED
- 1/4" MIN. OVERLAP
- SIDE VIEW

9. **DETAIL: TITEN HD ANCHOR**
SCALE: 1/8"=1'-0"

7 **DETAIL - ELECTRICAL CONDUIT PENETRATION**
Scale: NTS

8 **DETAIL - ARCTIC FOX DELUXE DOOR DISPLAY**
Scale: NTS

9 DETAIL TITEN HD ANCHOR
Scale: 1/8"=1'-0"

DRAWING # : A248547R1
UNIT# : 001
ORDER #:

KOLPAK®

SB COUNTY AMINAL CARE CTR -
COMBO OUTDR

**ARROW RESTAURANT
EQUIP & SUPPLY**

DRAWN BY:	DATE:	CHECK BY:	DATE:	QUOTE REVISION	DATE:
KAD	01/26/2014				

SHEET #
AD-3 of 3