

CULTURAL RESOURCES ASSESSMENT

San Bernardino County Behavioral Health Comprehensive Treatment Campus Project

Victorville, San Bernardino County, California

Prepared for:

Kayti Christianson
Senior Scientist/Ecologist
Environmental Services
Terracon Consultants, LLC
145 West Walnut Street
Carson, California 90248

Prepared by:

Joseph Orozco, M.A., RPA
BCR Consulting LLC
Claremont, California 91711

Project No. TER2415

Data Base Information:

Type of Study: Intensive Survey

Resources: TER2415-H-1

Keywords: Historic-Period Utility Pole

USGS Quadrangle: 7.5-minute Victorville, California (1993)



BCRCONSULTING LLC

July 30, 2025

MANAGEMENT SUMMARY

BCR Consulting LLC (BCR Consulting) is under contract to Terracon Consultants, LLC to complete a Cultural Resources Assessment of San Bernardino County Behavioral Health Comprehensive Treatment Campus Project (project) located in the City of Victorville, San Bernardino County (County), California. The County is Project Proponent and Lead Agency. A cultural resources records search, intensive-level pedestrian field survey, Native American Heritage Commission (NAHC) Sacred Lands File Search, and vertebrate paleontological resources overview were conducted for the project in partial fulfillment of the California Environmental Quality Act (CEQA). The records search results revealed that 12 previous cultural resource studies have taken place resulting in two cultural resources identified within the one-mile research radius. The project site has not been subject to previous cultural resources assessment and no cultural resources have been previously identified within its boundaries. One historic-period wooden utility tower was identified during the field survey, temporarily designated TER2415-H-1. It was evaluated and recommended not eligible for listing on the California Register of Historic Resources (California Register). The project site also encompasses a historic-period building complex occupied by the St. John of God rehabilitation facility (formerly the Sacred Heart Seminary). No impacts to the buildings are proposed and as such it does not warrant further consideration. No other cultural resources were identified. Based on these results, no significant impact related to historical resources is anticipated and no further investigations are recommended for the proposed project unless:

- The proposed project is changed to include areas that have not been subject to this cultural resource assessment;
- Cultural materials are encountered during project activities.

The current study attempted to determine whether significant archaeological deposits were present on the proposed project site. Although none were yielded during the records search and field survey, ground-disturbing activities have the potential to reveal buried deposits not observed on the surface. Prior to the initiation of ground-disturbing activities, field personnel should be alerted to the possibility of buried prehistoric or historic cultural deposits. In the event that field personnel encounter buried cultural materials, work in the immediate vicinity of the find should cease and a qualified archaeologist should be retained to assess the significance of the find. The qualified archaeologist shall have the authority to stop or divert construction excavation as necessary. If the qualified archaeologist finds that any cultural resources present meet eligibility requirements for listing on the California Register or the National Register of Historic Places (National Register), plans for the treatment, evaluation, and mitigation of impacts to the find will need to be developed. Prehistoric or historic cultural materials that may be encountered during ground-disturbing activities include:

- historic-period artifacts such as glass bottles and fragments, cans, nails, ceramic and pottery fragments, and other metal objects;
- historic-period structural or building foundations, walkways, cisterns, pipes, privies, and other structural elements;
- prehistoric flaked-stone artifacts and debitage (waste material), consisting of obsidian, basalt, and or cryptocrystalline silicates;
- groundstone artifacts, including mortars, pestles, and grinding slabs;
- dark, greasy soil that may be associated with charcoal, ash, bone, shell, flaked stone, groundstone, and fire affected rocks;
- human remains.

Results of the Sacred Lands File search were positive and the NAHC recommended contacting the Chemehuevi Indian Tribe for more information (see Appendix A). The City will initiate Assembly Bill (AB) 52 Native American Consultation for the project. Since the City will initiate and carry out the required Native American Consultation, the results of the consultation are not provided in this report. However, this report may be used during the consultation process, and BCR Consulting staff is available to answer questions and address concerns as necessary.

According to CEQA Guidelines, projects subject to CEQA must determine whether the project would “directly or indirectly destroy a unique paleontological resource”. The appended Paleontological Overview provided in Appendix C has recommended that:

The geologic units underlying the project are composed of alluvial fan deposits from the Pleistocene epoch (Hernandez, Brown, and Cox 2008). Pleistocene alluvial units are considered to be highly paleontologically sensitive. The Western Science Center does not have any localities within the project area or a 1 mile radius, but does have localities within similarly mapped units across Southern California.

Any fossil specimen from the San Bernardino County Behavioral Health Treatment Campus Project would be scientifically significant. Excavation activity associated with the development of the project area would impact the paleontologically sensitive Pleistocene alluvial units, and it is the recommendation of the Western Science Center that a paleontological resource mitigation program be put in place to monitor, salvage, and curate any recovered fossils associated with the study area.

If human remains are encountered during any project activities, State Health and Safety Code Section 7050.5 states that no further disturbance shall occur until the County Coroner has made a determination of origin and disposition pursuant to Public Resources Code Section 5097.98. The County Coroner must be notified of the find immediately. If the remains are determined to be prehistoric, the Coroner will notify the NAHC, which will determine and notify a Most Likely Descendant (MLD). With the permission of the landowner or his/her authorized representative, the MLD may inspect the site of the discovery. The MLD shall complete the inspection within 48 hours of notification by the NAHC.

TABLE OF CONTENTS

MANAGEMENT SUMMARY ii

INTRODUCTION.....1

 REGULATORY SETTING1

NATURAL SETTING4

 GEOLOGY4

 BIOLOGY5

CULTURAL SETTING5

 PREHISTORY5

 ETHNOGRAPHY7

 HISTORY7

PERSONNEL8

METHODS9

 RESEARCH9

 FIELD SURVEY9

RESULTS9

 RESEARCH9

 FIELD SURVEY10

SIGNIFICANCE EVALUATION10

 SIGNIFICANCE CRITERIA10

 CALIFORNIA REGISTER EVALUATION11

RECOMMENDATIONS11

REFERENCES.....13

FIGURES

1: Project Location Map.....2

TABLES

A: Cultural Resources and Reports Within a One-Mile of the Project Site9

APPENDICES

- A: CALIFORNIA DEPARTMENT OF PARKS AND RECREATION 523 FORMS
- B: NATIVE AMERICAN HERITAGE COMMISSION CORRESPONDENCE
- C: PALEONTOLOGICAL RESOURCES OVERVIEW
- D: PROJECT PHOTOGRAPHS
- E: RECORDS SEARCH BIBLIOGRAPHY

INTRODUCTION

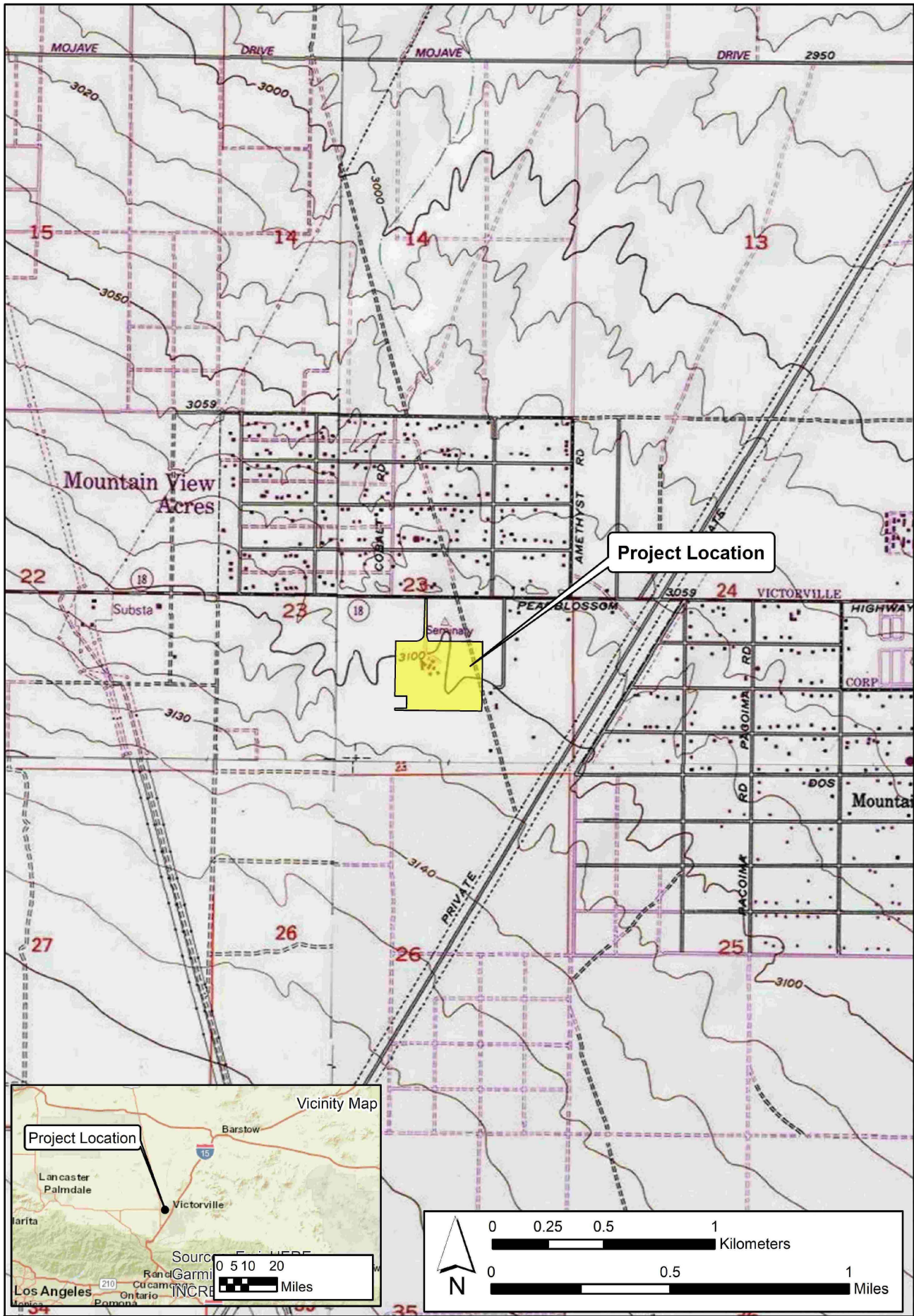
BCR Consulting LLC (BCR Consulting) is under contract to Terracon Consultants, LLC to complete a Cultural Resources Assessment of the San Bernardino County Behavioral Health Comprehensive Treatment Campus Project (project) located in the City of Victorville, San Bernardino County (County), California. The County is Project Proponent and Lead Agency. A cultural resources records search, intensive-level pedestrian field survey, Native American Heritage Commission (NAHC) Sacred Lands File Search, and vertebrate paleontological resources overview were conducted for the project in partial fulfillment of the California Environmental Quality Act (CEQA). The project site occupies a portion of Section 23 Township 5 North, Range 5 West, San Bernardino Baseline and Meridian. It is depicted on the United States Geological Survey (USGS) *Victorville, California* (1993) 7.5-minute topographic quadrangle (Figure 1). The proposed project is the improvement and expansion of the St. John of God Health Care Services center into the San Bernardino County Behavioral Health Comprehensive Treatment Campus. The County intends to develop this site with new treatment facilities and transitional housing for individuals in recovery under the Behavioral Health Continuum Infrastructure Program and Community Care Expansion program.

Regulatory Setting

The California Environmental Quality Act. CEQA applies to all discretionary projects undertaken or subject to approval by the state's public agencies (California Code of Regulations 14(3), § 15002(i)). Under CEQA, "A project with an effect that may cause a substantial adverse change in the significance of a historical resource is a project that may have a significant effect on the environment" (Cal. Code Regs. tit. 14(3), § 15064.5(b)). State CEQA Guidelines section 15064.5(a) defines a "historical resource" as a resource that meets one or more of the following criteria:

- Listed in, or eligible for listing in, the California Register of Historical Resources (California Register)
- Listed in a local register of historical resources (as defined at Cal. Public Res. Code § 5020.1(k))
- Identified as significant in a historical resource survey meeting the requirements of § 5024.1(g) of the Cal. Public Res. Code
- Determined to be a historical resource by a project's lead agency (Cal. Code Regs. tit. 14(3), § 15064.5(a))

A historical resource consists of "Any object, building, structure, site, area, place, record, or manuscript which a lead agency determines to be historically significant or significant in the architectural, engineering, scientific, economic, agricultural, educational, social, political, military, or cultural annals of California... Generally, a resource shall be considered by the lead agency to be 'historically significant' if the resource meets the criteria for listing in the California Register of Historical Resources" (Cal. Code Regs. tit. 14(3), § 15064.5(a)(3)). The significance of a historical resource is impaired when a project demolishes or materially alters in an adverse manner those physical characteristics of a historical resource that convey its historical significance and that justify its eligibility for the California Register. If an impact on a historical or archaeological resource is significant, CEQA requires feasible measures to minimize the impact (State CEQA Guidelines § 15126.4 (a)(1)). Mitigation of significant impacts must lessen or eliminate the physical impact that the project will have on the resource.



Section 5024.1 of the Cal. Public Res. Code established the California Register. Generally, a resource is considered by the lead agency to be “historically significant” if the resource meets the criteria for listing in the California Register (Cal. Code Regs. tit. 14(3), § 15064.5(a)(3)). The eligibility criteria for the California Register are similar to those of the National Register of Historic Places (National Register), and a resource that meets one or more of the eligibility criteria of the National Register will be eligible for the California Register. The California Register program encourages public recognition and protection of resources of architectural, historical, archaeological, and cultural significance, identifies historical resources for state and local planning purposes, determines eligibility for state historic preservation grant funding and affords certain protections under CEQA. Criteria for Designation:

1. Associated with events that have made a significant contribution to the broad patterns of local or regional history or the cultural heritage of California or the United States.
2. Associated with the lives of persons important to local, California or national history.
3. Embodies the distinctive characteristics of a type, period, region or method of construction or represents the work of a master or possesses high artistic values.
4. Has yielded, or has the potential to yield, information important to the prehistory or history of the local area, California or the nation.

In addition to meeting one or more of the above criteria, the California Register requires that sufficient time has passed since a resource’s period of significance to “obtain a scholarly perspective on the events or individuals associated with the resources.” (CCR 4852 [d][2]). Fifty years is normally considered sufficient time for a potential historical resource, and in order that the evaluation remain valid for a minimum of five years after the date of this report, all resources older than 45 years (i.e. resources from the “historic-period”) will be evaluated for California Register listing eligibility, or CEQA significance. The California Register also requires that a resource possess integrity. This is defined as the ability for the resource to convey its significance through seven aspects: location, setting, design, materials, workmanship, feeling, and association.

Finally, CEQA requires that significant effects on unique archaeological resources be considered and addressed. CEQA defines a unique archaeological resource as any archaeological artifact, object, or site about which it can be clearly demonstrated that, without merely adding to the current body of knowledge, there is a high probability that it meets any of the following criteria:

1. Contains information needed to answer important scientific research questions and there is a demonstrable public interest in that information.
2. Has a special and particular quality such as being the oldest of its type or the best available example of its type.
3. Is directly associated with a scientifically recognized important prehistoric or historic event or person.

CEQA Guidelines Section 15064.5 Appendix G includes significance criteria relative to archaeological and historical resources. These have been utilized as thresholds of significance here, and a project would have a significant environmental impact if it would:

- a) cause a substantial adverse change in the significance of a historical resource as defined in section 10564.5;
- b) Cause a substantial adverse change in the significance of an archaeological resource pursuant to Section 10564.5;
- c) Disturb any human remains, including those interred outside of formal cemeteries.

Tribal Cultural Resources. The Legislature added requirements regarding tribal cultural resources for CEQA in Assembly Bill 52 (AB 52) that took effect July 1, 2015. AB 52 requires consultation with California Native American tribes and consideration of tribal cultural resources in the CEQA process. By including tribal cultural resources early in the CEQA process, the legislature intended to ensure that local and Tribal governments, public agencies, and project proponents would have timely information available to identify and address potential adverse impacts to tribal cultural resources. By taking this proactive approach, the legislature also intended to reduce the potential for delay and conflicts during environmental review. To help determine whether a project may have such an effect, the Public Resources Code requires a lead agency to consult with any California Native American tribe that requests consultation and is traditionally and culturally affiliated with the geographic area of a project. Since the County will initiate and carry out the required AB52 Native American Consultation, the results of the consultation are not provided in this report. However, this report may be used during the consultation process, and BCR Consulting staff are available to answer questions and address comments.

Paleontological Resources. CEQA provides guidance relative to significant impacts on paleontological resources, indicating that a project would have a significant impact on paleontological resources if it disturbs or destroys a unique paleontological resource or site or unique geologic feature. Section 5097.5 of the California Public Resources Code specifies that any unauthorized removal of paleontological remains is a misdemeanor. Further, California Penal Code Section 622.5 sets the penalties for damage or removal of paleontological resources. CEQA documentation prepared for projects would be required to analyze paleontological resources as a condition of the CEQA process to disclose potential impacts. Please note that as of January 2018 paleontological resources are considered in the geological rather than cultural category. Therefore, paleontological resources are not summarized in the body of this report. A paleontological overview completed by the Western Science Center is provided as Appendix C.

NATURAL SETTING

Geology

The project is located in the southwestern portion of the Mojave Desert. Sediments within the project boundaries include a geologic unit composed of alluvial silt, sand, and gravel deposits derived from higher ground dating from the Holocene Epoch of the Quaternary Period (Dibblee

and Minch 2008). Field observations during the current study are consistent with these descriptions and are described further in the Results section below.

Biology

The mild climate of the late Pleistocene allowed piñon-juniper woodland to thrive throughout most of the Mojave (Van Devender et al. 1987). The vegetation and climate during this epoch attracted significant numbers of Rancho La Brea fauna, including dire wolf, saber toothed cat, short-faced bear, horse, camel, antelope, mammoth, as well as birds which included pelican, goose, duck, cormorant, and eagle (Reynolds 1988). The drier climate of the middle Holocene resulted in the local development of complementary flora and fauna, which remain largely intact to this day. Common native plants include creosote, cacti, rabbit bush, interior golden bush, cheese bush, species of sage, buckwheat at higher elevations and near drainages, Joshua tree, and various grasses. Common native animals include coyotes, cottontail and jackrabbits, rats, mice, desert tortoises, roadrunners, raptors, turkey vultures, and other bird species (see Williams et al. 2008).

CULTURAL SETTING

Prehistory

The prehistoric cultural setting of the Mojave Desert has been organized into many chronological frameworks (see Warren and Crabtree 1986; Bettinger and Taylor 1974; Lanning 1963; Hunt 1960; Wallace 1958, 1962, 1977; Wallace and Taylor 1978; Campbell and Campbell 1935), although there is no definitive sequence for the region. The difficulties in establishing cultural chronologies for the Mojave are a function of its enormous size and the small amount of archaeological excavations conducted there. Moreover, throughout prehistory many groups have occupied the Mojave and their territories often overlap spatially and chronologically resulting in mixed artifact deposits. Due to dry climate and capricious geological processes, these artifacts rarely become integrated in-situ. Lacking a milieu hospitable to the preservation of cultural midden, Mojave chronologies have relied upon temporally diagnostic artifacts, such as projectile points, or upon the presence/absence of other temporal indicators, such as groundstone. Such methods are instructive, but can be limited by prehistoric occupants' concurrent use of different artifact styles, or by artifact re-use or re-sharpening, as well as researchers' mistaken diagnosis, and other factors (see Flenniken 1985; Flenniken and Raymond 1986; Flenniken and Wilke 1989). Recognizing the shortcomings of comparative temporal indicators, this study synthesizes Warren and Crabtree (1986), who have drawn upon this method to produce a commonly cited and relatively comprehensive chronology.

Paleoindian (12,000 to 10,000 BP) and Lake Mojave (10,000 to 7,000 BP) Periods. Climatic warming characterizes the transition from the Paleoindian Period to the Lake Mojave Period. This transition also marks the end of Pleistocene Epoch and ushers in the Holocene. The Paleoindian Period has been loosely defined by isolated fluted (such as Clovis) projectile points, dated by their association with similar artifacts discovered in-situ in the Great Plains (Sutton 1996:227-228). Some fluted bifaces have been associated with fossil remains of Rancho La Brea mammals approximately dated to ca. 13,300-10,800 BP near China Lake in the northern Mojave Desert. The Lake Mojave Period has been associated with cultural adaptations to moist conditions, and resource allocation pointing to more lacustrine environments than previously (Bedwell 1973; Hester 1973). Artifacts that characterize this period include stemmed points, flake and core scrapers, choppers, hammerstones, and

crescentics (Warren and Crabtree 1986:184). Projectile points associated with the period include the Silver Lake and Lake Mojave styles. Lake Mojave sites commonly occur on shorelines of Pleistocene lakes and streams, where geological surfaces of that epoch have been identified (Basgall and Hall 1994:69).

Pinto Period (7,000 to 4,000 BP). The Pinto Period has been largely characterized by desiccation of the Mojave. As formerly rich lacustrine environments began to disappear, the artifact record reveals more sporadic occupation of the Mojave, indicating occupants' recession to the more hospitable fringes (Warren 1984). Pinto Period sites are rare, and are characterized by surface manifestations that usually lack significant in-situ remains. Artifacts from this era include Pinto projectile points and a flake industry similar to the Lake Mojave tool complex (Warren 1984), though use of Pinto projectile points as an index artifact for the era has been disputed (see Schroth 1994). Milling stones have also occasionally been associated with sites of this period (Warren 1984).

Gypsum Period. (4,000 to 1,500 BP). A temporary return to moister conditions during the Gypsum Period is postulated to have encouraged technological diversification afforded by the relative abundance of resources (Warren 1984:419-420; Warren and Crabtree 1986:189). Lacustrine environments reappear and begin to be exploited during this era (Shutler 1961, 1968). Concurrently a more diverse artifact assemblage reflects intensified reliance on plant resources. The new artifacts include milling stones, mortars, pestles, and a proliferation of Humboldt Concave Base, Gypsum Cave, Elko Eared, and Elko Corner-notched dart points (Warren 1984; Warren and Crabtree 1986). Other artifacts include leaf-shaped projectile points, rectangular-based knives, drills, large scraper planes, choppers, hammer stones, shaft straighteners, incised stone pendants, and drilled slate tubes. The bow and arrow appears around 2,000 BP, evidenced by the presence of a smaller type of projectile point, the Rose Spring point (Rogers 1939; Shutler 1961).

Saratoga Springs Period (1,500 to 800 BP). During the Saratoga Springs Period regional cultural diversifications of Gypsum Period developments are evident within the Mojave. Basketmaker III (Anasazi) pottery appears during this period, and has been associated with turquoise mining in the eastern Mojave Desert (Warren and Crabtree 1986:191). Influences from Patayan/Yuman assemblages are apparent in the southern Mojave, and include buff and brown wares often associated with Cottonwood and Desert Side-notched projectile points (Warren 1984:423). Obsidian becomes more commonly used throughout the Mojave and characteristic artifacts of the period include milling stones, mortars, pestles, ceramics, and ornamental and ritual objects. More structured settlement patterns are evidenced by the presence of large villages, and three types of identifiable archaeological sites (major habitation, temporary camps, and processing stations) emerge (McGuire and Hall 1988). Diversity of resource exploitation continues to expand, indicating a much more generalized, somewhat less mobile subsistence strategy.

Shoshonean Period (800 BP to Contact). The Shoshonean period is the first to benefit from contact-era ethnography –as well as be subject to its inherent biases. Interviews of living informants allowed anthropologists to match artifact assemblages and particular traditions with linguistic groups, and plot them geographically (see Kroeber 1925; Gifford 1918; Strong 1929). During the Shoshonean Period continued diversification of site assemblages, and reduced Anasazi influence both coincide with the expansion of Numic (Uto-Aztecan language family) speakers across the Great Basin, Takic (Uto-Aztecan language family) speakers into southern California, and the Hopi across the Southwest (Sutton 1996). Hunting and gathering

continued to diversify, and the diagnostic arrow points include desert side-notch and cottonwood triangular. Ceramics continue to proliferate, though are more common in the southern Mojave during this period (Warren and Crabtree 1986). Trade routes have become well established across the Mojave, particularly the Mojave Trail, which transported goods and news across the desert via the Mojave River, to the west of the current project. Trade in the western Mojave was more closely related to coastal groups than others.

Ethnography

The Uto-Aztecan “Serrano” people occupied the western Mojave Desert periphery. Kroeber (1925) applied the generic term “Serrano” to four groups, each with distinct territories: the Kitanemuk, Tataviam, Vanyume, and Serrano. Only one group, in the San Bernardino Mountains and West-Central Mojave Desert, ethnically claims the term Serrano. Bean and Smith (1978) indicate that the Vanyume, an obscure Takic population, was found along the Mojave River at the time of Spanish contact. The Kitanemuk lived to the north and west, while the Tataviam lived to the west. The Serrano lived mainly to the south (Bean and Smith 1978). All may have used the western Mojave area seasonally. Historical records are unclear concerning precise territory and village locations. It is doubtful that any group, except the Vanyume, actually lived in the region for several seasons yearly. It should be noted that Yuhaaviatam of San Manuel Nation regards Vanyume and Serrano as the same group, not as two separate Takic populations.

History

Historic-era California is generally divided into three periods: the Spanish or Mission Period (1769 to 1821), the Mexican or Rancho Period (1821 to 1848), and the American Period (1848 to present).

Spanish Period. The first European to pass through the project area is thought to be a Spaniard called Father Francisco Garces. Having become familiar with the area, Garces acted as a guide to Juan Bautista de Anza, who had been commissioned to lead a group across the desert from a Spanish outpost in Arizona to set up quarters at the Mission San Gabriel in 1771 near what today is Pasadena (Beck and Haase 1974). This is the first recorded group crossing of the Mojave Desert and, according to Father Garces’ journal, they camped at the headwaters of the Mojave River, one night less than a day’s march from the mountains. Today, this is estimated to have been approximately 11 miles southeast of Victorville (Marenczuk 1962). Garces was followed by Alta California Governor Pedro Fages, who briefly explored the western Mojave region in 1772. Searching for San Diego Presidio deserters, Fages had traveled north through Riverside to San Bernardino, crossed over the mountains into the Mojave Desert, and then journeyed west to the San Joaquin Valley (Beck and Haase 1974).

Mexican Period. In 1821, Mexico overthrew Spanish rule and the missions began to decline. By 1833, the Mexican government passed the Secularization Act, and the missions, reorganized as parish churches, lost their vast land holdings, and released their neophytes (Beattie and Beattie 1974).

American Period. The American Period, 1848–Present, began with the Treaty of Guadalupe Hidalgo. The Gold Rush had attracted huge numbers of American settlers and in 1850, California was accepted into the Union. The cattle industry reached its greatest prosperity during the first years of the American Period. Mexican Period land grants had created large pastoral estates in California, and demand for beef during the Gold Rush led to a cattle boom

that lasted from 1849–1855. However, beginning about 1855, the demand for beef began to decline due to imports of sheep and cattle from the eastern U.S. When the beef market collapsed, many California ranchers lost their ranchos. A series of disastrous floods in 1861–1862, followed by a significant drought diminished the economic impact of local ranching. This decline combined with ubiquitous agricultural and real estate developments of the late 19th century, set the stage for diversified economic pursuits that have continued to proliferate to this day (Beattie and Beattie 1974; Cleland 1941).

Local Sequence. The Victor Valley was first settled in 1858 by ex-army captain Aaron Lane during a mass exodus of Mormons from San Bernardino back to Utah. Lane set up a ranch on the west bank of the Mojave River which became a popular stop for travelers (Marenczuk 1962; Gutglueck 2015a). The railway connecting San Bernardino and Barstow, which traveled through present day Victorville, was completed in 1884. The completion of the railway brought many travelers through the town and allowed mining in the area, which was already known for its rich silver and gold mines, to flourish and expand into granite, limestone, and marble (Gutglueck 2015a). The town of Victor, later to be renamed Victorville, was founded in 1885 and named for Jacob N Victor, a general manager of operations for the California Southern Railroad, a subsidiary of the Atchison, Topeka and Santa Fe Railway who were responsible for the newly constructed railway (Gudde 1976; Wallenfeldt 2020). The town's name was changed to Victorville in 1904 because many were confusing it for another of the same name in Colorado (Wallenfeldt 2020; Gutglueck 2015b). Population, commerce, and development continued growing throughout the early 20th century and the town established the Victorville Chamber of Commerce in 1911 in response. The first high school in Victorville was opened in 1914 and cement plants were being opened throughout the larger area during the early 20th century. The Mojave River provided relatively plentiful water, which allowed local agriculture to flourish alongside mining operations until its decline in 1972 (Nordyke 1974). Canals distributed runoff water for farms near the river (Turner and Presswood 1963:86), and a shallow water table encouraged well drilling for various remote agricultural endeavors. Local crops included alfalfa, onions, watermelon, cantaloupe, non-citrus fruits, and other produce (Marenczuk 1962; Turner and Presswood 1963:86). Farming, mining, cement manufacturing, and business brought in by travelers, continued to be one of the main drivers of Victorville's budding economy throughout much of the 20th century. George Air Force Base, initially named Victorville Air Base, was completed in 1943 in response to World War II (Colton Courier 1943). It was later renamed George Air Force Base and was decommissioned in 1992. The former air base is now the Southern California Logistics Airport and is used mainly for business, military, and freight use (Wallenfeldt 2020).

PERSONNEL

David Brunzell, M.A., RPA acted as the Principal Investigator for the current study and provided project oversight. BCR Consulting Project Manager Joseph Orozco wrote the technical report and managed the project. Mr. Orozco performed the records search at the South Central Coastal Information Center (SCCIC) at California State University, Fullerton. BCR Consulting Archaeological Crew Chief Timothy Blood M.S., BCR Consulting Staff Archaeologist Douglas Kazmier B.A. PGC, and BCR Consulting Staff Historian George Brentner B.A., carried out the pedestrian field survey.

METHODS

Research

Mr. Orozco completed an archaeological records search using SCCIC records at California State University, Fullerton for the current project. This archival research reviewed the status of all recorded historic and prehistoric cultural resources, and survey and excavation reports completed within the project site boundaries and within a one-mile radius of it. Additional resources reviewed included the National Register of Historic Places (National Register), the California Register, the Built Environmental Resource Directory (BERD), and documents and inventories published by the California Office of Historic Preservation. These include the lists of California Historical Landmarks, California Points of Historical Interest, Listing of National Register Properties, and the Inventory of Historic Structures. Some additional research was performed to provide brief land use history of the project site.

Field Survey

An intensive-level cultural resources field survey of the project site was conducted on October 25, 2024. The survey was conducted by walking parallel transects spaced approximately 15 meters apart across the project site. Digital photographs were taken at various points within the project site.

RESULTS

Research

Data from the SCCIC revealed that 12 previous cultural resource studies have taken place resulting in two cultural resources identified within the one-mile research radius. The project site has not been subject to previous cultural resources assessment and no cultural resources have been previously identified within its boundaries. The records search results are summarized in Table A, and a bibliography is provided in Appendix D.

Table A. Cultural Resources and Reports Within One-Mile of the Project Site

USGS Quad	Cultural Resources	Studies
<i>Victorville</i> (1993), <i>California</i>	P-36-7156: Historic-Period Refuse Scatter (0.75 Miles N) P-36-7694: Historic-Period Structure and Multicomponent Site (0.90 Miles SE)	SB-252, 612, 614, 763, 2668, 3988, 4299, 4304, 4543, 4973, 7156, 8052

The project site is occupied by a six-building complex constructed as living, teaching, and worship quarters for the Sacred Heart Seminary in 1968. The seminary originally trained young men to join the Roman Catholic priesthood, but by 1983 it was redesignated as a renewal center for Christian church retreats and provided workshop and other activities for secular organizations. It currently houses the St. John of God Healthcare Services facility that offers outpatient behavioral healthcare, and alcohol and drug rehabilitation services. The County has proposed expansion of the facility as part of the current project, although impacts to the original buildings are not proposed (Daily Press 18 Oct 1968:9; Daily Press 8 July 1983:15; Lee 2024).

Field Survey

During the field survey, BCR Consulting archaeologists identified one historic-period cultural resource within the project site boundaries, a wooden utility pole temporarily designated TER2415-H-1. The pole was marked with inspection tags dated 1940 and 1967, indicating a pre-1940 date of construction. The project site also encompasses a historic-period building complex occupied by the St. John of God rehabilitation facility (formerly the Sacred Heart Seminary). No impacts to the building complex are proposed and as such it does not warrant further consideration. The project site has been subject to off-highway vehicle traffic, clearing for dirt roads, animal burrows, underground utility installation (sewer and electrical), and modern refuse dumping. Vegetation consisted of creosote scrubland. Surface visibility within the project site ranged from 60 to 80 percent. Surficial sediments consisted of coarse, light-yellowish brown, sandy loam with approximately 20 percent sub-rounded to rounded granitic pebbles and cobbles.

Significance Evaluations

During the field survey one historic-period resource (a wooden utility pole temporarily designated TER2415-H-1) was identified that will be subject to project-related impacts. CEQA calls for the evaluation and recordation of historic and archaeological resources. The criteria for determining the significance of impacts to cultural resources are based on Section 15064.5 of the *CEQA Guidelines* and Guidelines for the Nomination of Properties to the California Register. Properties eligible for listing in the California Register and subject to review under CEQA are those meeting the criteria for listing in the California Register, or designation under a local ordinance.

Significance Criteria

California Register of Historical Resources. The California Register criteria are based on National Register criteria. For a property to be eligible for inclusion on the California Register, one or more of the following criteria must be met:

1. It is associated with the events that have made a significant contribution to the broad patterns of local or regional history, or the cultural heritage of California or the U.S.;
2. It is associated with the lives of persons important to local, California, or U.S. history;
3. It embodies the distinctive characteristics of a type, period, region, or method of construction, represents the work of a master, possesses high artistic values; and/or
4. It has yielded, or has the potential to yield, information important to the prehistory or history of the local area, California, or the nation.

In addition to meeting one or more of the above criteria, the California Register requires that sufficient time has passed since a resource's period of significance to "obtain a scholarly perspective on the events or individuals associated with the resources." (CCR 4852 [d][2]). The California Register also requires that a resource possess integrity. This is defined as the ability for the resource to convey its significance through seven aspects: location, setting, design, materials, workmanship, feeling, and association. California Register evaluations are provided below.

California Register Evaluations

TER2415-H-1. Criterion 1: This utility pole was originally constructed within the general context of the pre-World War II development of Victorville; however, it is not significantly associated with important events related to the founding of that municipality or development of the region. It is therefore not eligible for the California Register under Criterion 1. Criterion 2: Research has not linked the pole or its alignment with individuals who have been notable in local, state, or national history. It is therefore not eligible for the California Register under Criterion 2. Criterion 3: The resource is a simple wooden utility pole. It does not embody the distinctive characteristics of a type, period, region, or method of construction, or represent the work of an important creative individual or possess high artistic values. It is therefore not eligible for the California Register under Criterion 3. Criterion 4: The wooden utility pole is a well understood type, and as such the resource has not and is not likely to yield information important in prehistory or history. It is therefore not eligible for the California Register under Criterion 4. The historic-period wooden utility pole is therefore recommended not eligible under any of the four criteria for listing on the California Register, and as such is not recommended a historical resource under CEQA.

RECOMMENDATIONS

The research and field survey revealed the presence of one historic-period cultural resource (a wooden utility tower) within the project site boundaries, temporarily designated TER2415-H-1. It was evaluated and recommended not eligible for listing on the California Register. The project site also encompasses a historic-period building complex occupied by the St. John of God rehabilitation facility (formerly the Sacred Heart Seminary). No impacts to the building complex are proposed and as such it does not warrant further consideration. No other cultural resources were identified. Based on these results, no significant impact related to historical resources is anticipated and no further investigations are recommended unless:

- The proposed project is changed to include areas that have not been subject to this cultural resource assessment;
- Cultural materials are encountered during project activities.

The current study attempted to determine whether significant archaeological deposits were present on the proposed project site. Although none were yielded during the records search and field survey, ground-disturbing activities have the potential to reveal buried deposits not observed on the surface. Prior to the initiation of ground-disturbing activities, field personnel should be alerted to the possibility of buried prehistoric or historic cultural deposits. In the event that field personnel encounter buried cultural materials, work in the immediate vicinity of the find should cease and a qualified archaeologist should be retained to assess the significance of the find. The qualified archaeologist shall have the authority to stop or divert construction excavation as necessary. If the qualified archaeologist finds that any cultural resources present meet eligibility requirements for listing on the California Register or the National Register of Historic Places (National Register), plans for the treatment, evaluation, and mitigation of impacts to the find will need to be developed. Prehistoric or historic cultural materials that may be encountered during ground-disturbing activities include:

- historic-period artifacts such as glass bottles and fragments, cans, nails, ceramic and pottery fragments, and other metal objects;
- historic-period structural or building foundations, walkways, cisterns, pipes, privies, and other structural elements;
- prehistoric flaked-stone artifacts and debitage (waste material), consisting of obsidian, basalt, and or cryptocrystalline silicates;
- groundstone artifacts, including mortars, pestles, and grinding slabs;
- dark, greasy soil that may be associated with charcoal, ash, bone, shell, flaked stone, groundstone, and fire affected rocks;
- human remains.

Findings were positive during the Sacred Lands File search with the NAHC. The City will initiate Assembly Bill (AB) 52 Native American Consultation for the project. Since the City will initiate and carry out the required Native American Consultation, the results of the consultation are not provided in this report. However, this report may be used during the consultation process, and BCR Consulting staff are available to answer questions and address concerns as necessary.

According to CEQA Guidelines, projects subject to CEQA must determine whether the project would “directly or indirectly destroy a unique paleontological resource”. The appended Paleontological Overview provided in Appendix C has recommended that:

The geologic units underlying the project are composed of alluvial fan deposits from the Pleistocene epoch (Hernandez, Brown, and Cox 2008). Pleistocene alluvial units are considered to be highly paleontologically sensitive. The Western Science Center does not have any localities within the project area or a 1 mile radius, but does have localities within similarly mapped units across Southern California.

Any fossil specimen from the San Bernardino County Behavioral Health Treatment Campus Project would be scientifically significant. Excavation activity associated with the development of the project area would impact the paleontologically sensitive Pleistocene alluvial units, and it is the recommendation of the Western Science Center that a paleontological resource mitigation program be put in place to monitor, salvage, and curate any recovered fossils associated with the study area.

If human remains are encountered during any project activities, State Health and Safety Code Section 7050.5 states that no further disturbance shall occur until the County Coroner has made a determination of origin and disposition pursuant to Public Resources Code Section 5097.98. The County Coroner must be notified of the find immediately. If the remains are determined to be prehistoric, the Coroner will notify the NAHC, which will determine and notify a Most Likely Descendant (MLD). With the permission of the landowner or his/her authorized representative, the MLD may inspect the site of the discovery. The MLD shall complete the inspection within 48 hours of notification by the NAHC.

REFERENCES

- Basgall, Mark E., and M.C. Hall
1994 Perspectives on the Early Holocene Archaeological Record of the Mojave Desert. In *Kelso Conference Papers 1987-1992*, edited by G.D. Everson and J.S. Schneider.
- Bean, Lowell John, and Charles R. Smith
1978 *California*, edited by R.F. Heizer. Handbook of North American Indians, Vol. 8, W.C. Sturtevant, general editor, Smithsonian Institution, Washington, D.C.
- Beattie, George W., and Helen P. Beattie
1974 *Heritage of the Valley: San Bernardino's First Century*. Biobooks: Oakland.
- Beck, Warren A., and Ynez D. Haase
1974 *Historical Atlas of California*. Oklahoma City: University of Oklahoma Press.
- Bedwell, S.F.
1973 *Fort Rock Basin: Prehistory and Environment*. University of Oregon Books, Eugene.
- Bettinger, Robert L., and R.E. Taylor
1974 Suggested Revisions in Archaeological Sequences of the Great Basin and Interior Southern California. *Nevada Archaeological Survey Research Papers* 3:1-26.
- Campbell, E., and W. Campbell
1935 The Pinto Basin. *Southwest Museum Papers* 9:1-51.
- Cleland, Robert Glass
1941 *The Cattle on a Thousand Hills—Southern California, 1850-80*. San Marino, California: Huntington Library.
- Colton Courier
1943 Victorville Army Air Base Talent On Radio Jan. 22. *The Colton Courier* 15 January: Page 6. Colton, California.
- Dibblee, Jr., Thomas W., and John A. Minch
2008 Geologic Map of the Shadow Mountains & Victorville 15 Minute Quadrangles. Santa Barbara Museum of Natural History, California.
- Flenniken, J.J.
1985 Stone Tool Reduction Techniques as Cultural Markers. *Stone Tool Analysis: Essays in Honor of Don E. Crabtree*, edited by M.G. Plew, J.C. Woods, and M.G. Pavesic. University of New Mexico Press, Albuquerque.
- Flenniken, J.J. and A.W. Raymond
1986 Morphological Projectile Point Typology: Replication, Experimentation, and Technological Analysis. *American Antiquity* 51:603-614.

- Flenniken, J.J. and Philip J. Wilke
1989 Typology, Technology, and Chronology of Great Basin Dart Points. *American Anthropologist* 91:149-158.
- Gifford, Edward W.
1918 Clans and Moieties in Southern California. *University of California Publications in American Archaeology and Anthropology* 14(22):155-219.
- Gudde, Erwin G.
1976 *California Gold Camps; A Geographical and Historical Dictionary of Camps, Towns, and Localities Where Gold Was Found and mine; Wayside Stations and Trading Centers*. University of California Press. Berkeley.
- Gutglueck, Mark
2015a Victor Valley History 1856 – 1888. *San Bernardino County Sentinel* 11 September. San Bernardino, California.
2015b Victor Valley History 1889 – 1913. *San Bernardino County Sentinel* 29 August. San Bernardino, California.
- Hester, T.R.
1973 *Chronological Ordering of Great Basin Prehistory*. Contributions of the Archaeological Research Facility 17, University of California, Berkeley.
- Hunt, Alice P.
1960 *The Archaeology of the Death Valley Salt Pan, California*. University of Utah Anthropological Papers No. 47.
- Jaeger, Edmund C., and Arthur C. Smith
1971 *Introduction to the Natural History of Southern California*. California Natural History Guides: 13. Los Angeles: University of California Press.
- Kroeber, Alfred L.
1925 *Handbook of the Indians of California*. Bureau of American Ethnology Bulletin 78. Washington D.C.: Smithsonian Institution. Reprinted in 1976, New York: Dover.
- Lanning, Edward P.
1963 The Archaeology of the Rose Spring Site (Iny-372). *University of California Publications in American Archaeology and Ethnology* 49(3):237-336.
- Lee, Peter
2024 *St. John of God Healthcare Services*. Electronic Document: <https://www.rehab.com/saint-john-of-god-healthcare-services-victorville>. Accessed 11/19/2024.
- Marenczuk, Wesley
1962 *The Story of Oro Grande*. Published by Author. Victor Valley College.

McGuire, K.R., and M.C. Hall

- 1988 *The Archaeology of Tiefert Basin, Fort Irwin, San Bernardino County, California*. Prepared for the U.S. Army Corps of Engineers, Los Angeles District.

Nordyke, Priscilla

- 1974 Historic Ranch, River Crossing Up for Sale. *The San Bernardino Sun* 9 October: No Page.

Reynolds, R.E.

- 1988 *Paleontologic Resource Overview and Management Plan for Edwards Air Force Base, California*. San Bernardino County Museum, Redlands, California.

Rogers, M.J.

- 1939 *Early Lithic Industries of the Lower Basin of the Colorado River and Adjacent Desert Areas*. San Diego Museum Papers No. 3.

Schroth, Adella Beverly

- 1994 *The Pinto Point Controversy in the Western United States*. Unpublished PhD Dissertation, University of California, Riverside.

Shutler, Richard, Jr.

- 1961 *Lost City, Pueblo Grande de Nevada*. NV State Museum Anthropological Papers 5.
- 1968 The Great Basin Archaic. In *Prehistory in the Western United States. Contributions in Anthropology* 1(3):24-26. Edited by C. Irwin-Williams, Eastern New Mexico Univ.

Strong, William Duncan

- 1929 Aboriginal Society in Southern California. *University of California Publications in American Archaeology and Ethnology* 26(1):1-358.

Sutton, Mark Q.

- 1996 The Current Status of Archaeological Research in the Mojave Desert. *Journal of California and Great Basin Anthropology* 18(2):221-257.

Turner, Larry and Jerry Presswood

- 1963 *The Turner Ranch*. Mohave Historical Society. Victorville, California.

United States Geological Survey

- 1993 *Victorville, California* 7.5-minute topographic quadrangle map.

Van Devender, Larry M., Gary L. Shumway, and Russell D. Hartill

- 1987 *Desert Fever: An Overview of Mining in the California Desert*. Living West Press, Canoga Park, California.

Wallace, William J.

- 1958 Archaeological Investigation in Death Valley National Monument. *University of California Archaeological Survey Reports* 42:7-22.

1962 Prehistoric Cultural Development in the Southern California Deserts. *American Antiquity* 28(2):172-180.

1977 A Half Century of Death Valley Archaeology. *The Journal of California Anthropology* 4(2):249-258.

Wallace, William J., and Edith S. Taylor

1978 *Ancient Peoples and Cultures of Death Valley National Monument*. Acoma Books, Ramona, California.

Wallenfeldt, Jeff

2020 *Victorville California, United States*. Encyclopedia Britannica, Inc. Edinburgh, Scotland.

Warren, Claude N.

1984 The Desert Region. In *California Archaeology*, by M. Moratto, contributions by D.A. Fredrickson, C. Raven, and C.N. Warren, pp. 339–430. Academic Press, Orlando, Florida.

Warren, Claude N., and R.H. Crabtree

1986 The Prehistory of the Southwestern Great Basin. In *Handbook of the North American Indians, Vol. 11, Great Basin*, edited by W.L. d'Azevedo, pp.183-193. W.C. Sturtevant, General Editor. Smithsonian Institution, Washington D.C.

Williams, Patricia, Leah Messinger, Sarah Johnson

2008 *Habitats Alive! An Ecological Guide to California's Diverse Habitats*. California Institute for Biodiversity, Claremont, California.

APPENDIX A

CALIFORNIA DEPARTMENT OF PARKS AND RECREATION 523 FORMS

State of California — The Resources Agency
 DEPARTMENT OF PARKS AND RECREATION
PRIMARY RECORD

Primary #
 HRI #
 Trinomial
 NRHP Status Code

Other Listings
 Review Code

Reviewer

Date

Page 1 of 2

*Resource Name or #: TER2415-H-1

P1. Other Identifier: N/A

*P2. Location: Not for Publication Unrestricted

*a. County: San Bernardino

and (P2b and P2c or P2d. Attach a Location Map as necessary.)

*b. USGS 7.5' Quad: Victorville, California Date: 1993 T 5N; R 5W; NW ¼ of SE ¼ of Sec 23; S.B.B.M.

c. Address: 13333 Palmdale Road City: Victorville Zip: 92392

d. UTM's: 11S 465782mE/3818100mN
 Elevation: 3,115' AMSL

e. Other Locational Data: (e.g., parcel #, directions to resource, elevation, etc., as appropriate): The distribution pole is located 0.20 miles south of the southeast intersection of Palmdale Road and Cobalt Road.

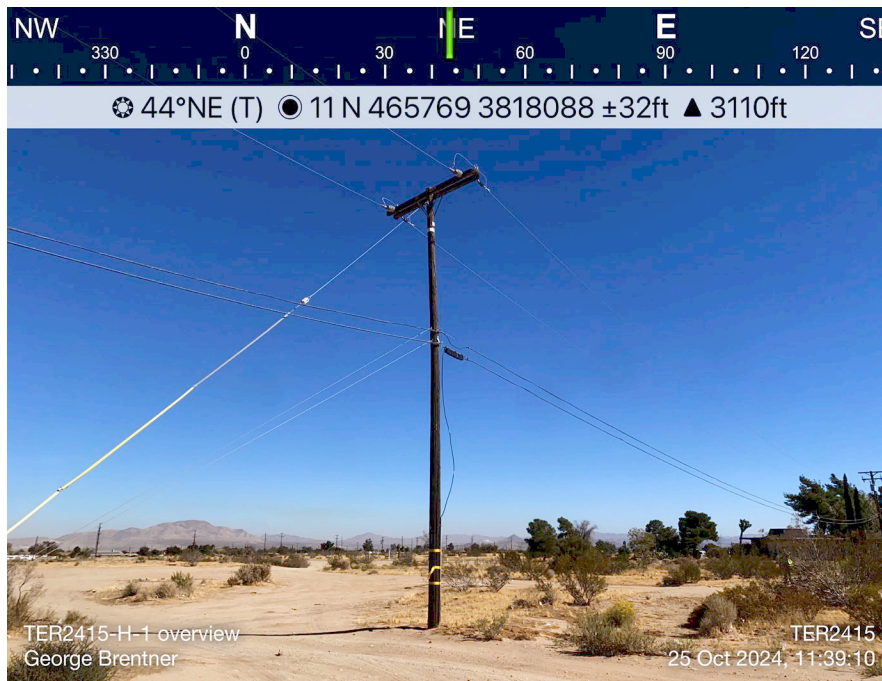
*P3a. Description: This resource consists of one wooden distribution pole with inspection date nails from 1940 and 1967 and is visible in a 1968 historic aerial photograph (United States Department of Agriculture 1968). The pole is part of a larger (mostly modern) distribution alignment that is arranged in a north/south orientation along Cobalt Road, west of the project site boundary. The pole provides power to an occupied structure on the project site. The environmental setting includes creosote bushes, cholla cactus, and rabbit bush. Soil was a coarse, light-yellowish brown, sandy loam with approximately 20 percent sub-rounded to rounded granitic pebbles and cobbles. The surface visibility was approximately 60-80 percent.

References: United States Department of Agriculture 1968. Historic Aerial Photographs of San Bernardino County. Electronic document. Historicaerials.com. Accessed 10/31/2024.

*P3b. Resource Attributes: (List attributes and codes) HP39. Other

*P4. Resources Present: Building Structure Object Site District Element of District Other (Isolates, etc.)

P5a. Photo or Drawing



*P5b. Description of Photo: (View, date, accession #) Historic-Period Wooden Distribution Pole (View NE)

*P6. Date Constructed/Age and Sources:

Historic Prehistoric Both

*P7. Owner and Address:

San Bernardino County
 385 N. Arrowhead Avenue
 San Bernardino, California 92415

*P8. Recorded by: (Name, affiliation, and address)

G. Brentner, D. Kazmier, T. Blood
 BCR Consulting, LLC.
 Claremont, CA 91711

*P9. Date Recorded: 10/25/2024

*P10. Survey Type: Intensive

*P11. Report Citation: Phase I Cultural Resources Assessment San Bernardino County Behavioral Health Comprehensive Treatment Campus Project, San Bernardino County, California.

*Attachments: NONE Location Map Sketch Map Continuation Sheet Building, Structure, and Object Record Archaeological Record District Record Linear Feature Record Milling Station Record Rock Art Record Artifact Record Photograph Record Other (List):

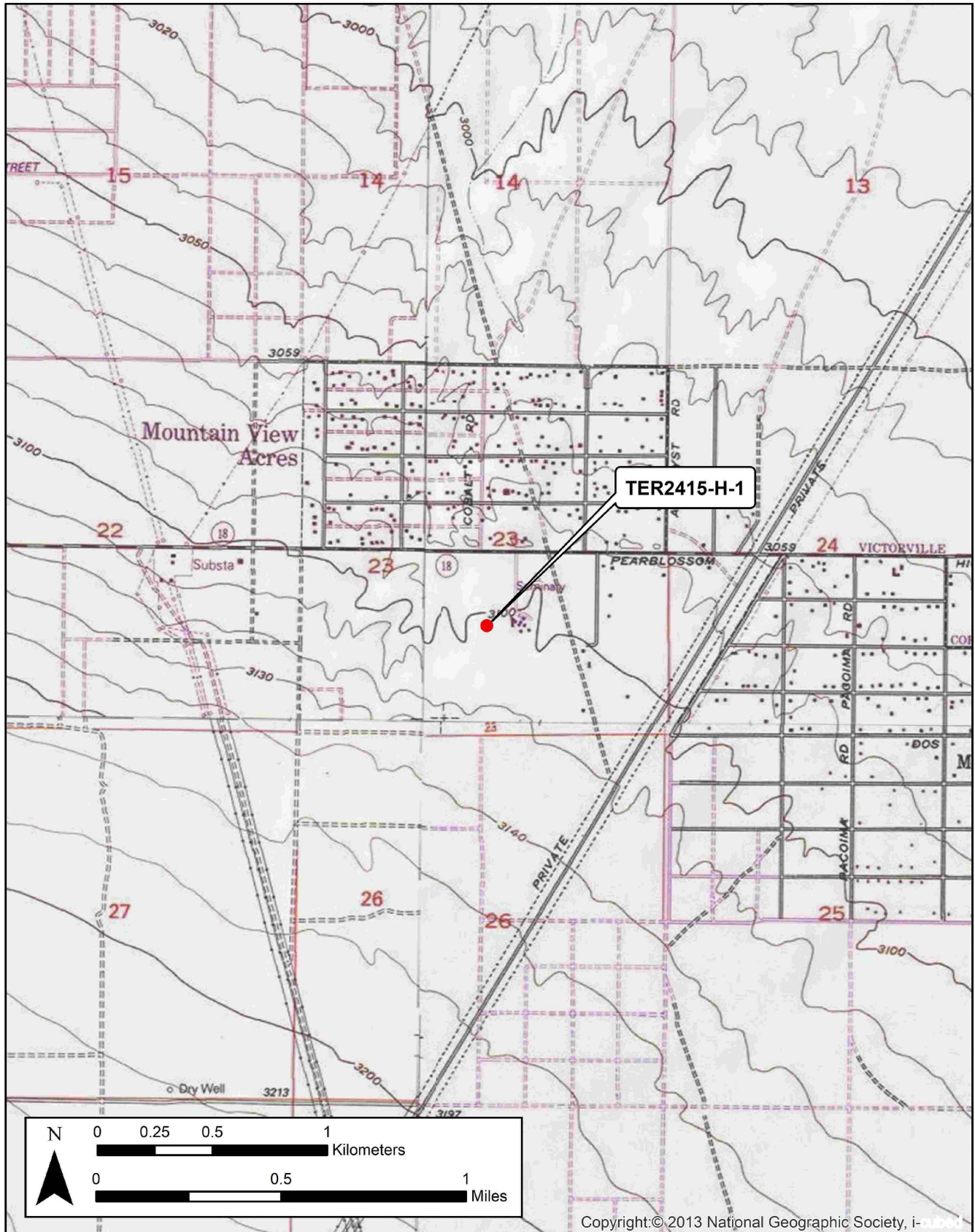
State of California - The Resources Agency
DEPARTMENT OF PARKS AND RECREATION
LOCATION MAP

Primary #:
HRI #:
Trinomial:

*Resource Name or #: TER2415-H-1

*Map Name: Victorville, California

*Scale: 1:24,000 *Date of Map: 1993



Copyright: © 2013 National Geographic Society, i-cubed

APPENDIX B

NATIVE AMERICAN HERITAGE COMMISSION CORRESPONDENCE

NATIVE AMERICAN HERITAGE COMMISSION

October 29, 2024

Joseph Orozco
BCR Consulting, LLC

Via Email to: bcrllc2008@gmail.com

Re: San Bernardino County Behavioral Health Treatment Campus Project, San Bernardino County

To Whom It May Concern:

A record search of the Native American Heritage Commission (NAHC) Sacred Lands File (SLF) was completed for the information submitted for the above referenced project. The results were positive. Please contact the Chemehuevi Indian Tribe on the attached list for information. Please note that tribes do not always record their sacred sites in the SLF, nor are they required to do so. A SLF search is not a substitute for consultation with tribes that are traditionally and culturally affiliated with a project's geographic area. Other sources of cultural resources should also be contacted for information regarding known and recorded sites, such as the appropriate regional California Historical Research Information System (CHRIS) archaeological Information Center for the presence of recorded archaeological sites.

Attached is a list of Native American tribes who may also have knowledge of cultural resources in the project area. This list should provide a starting place in locating areas of potential adverse impact within the proposed project area. Please contact all of those listed; if they cannot supply information, they may recommend others with specific knowledge. By contacting all those listed, your organization will be better able to respond to claims of failure to consult with the appropriate tribe. If a response has not been received within two weeks of notification, the Commission requests that you follow-up with a telephone call or email to ensure that the project information has been received.

If you receive notification of change of addresses and phone numbers from tribes, please notify the NAHC. With your assistance, we can assure that our lists contain current information.

If you have any questions or need additional information, please contact me at my email address: Andrew.Green@nahc.ca.gov.

Sincerely,

Andrew Green
Cultural Resources Analyst

Attachment



CHAIRPERSON
Reginald Pagaling
Chumash

VICE-CHAIRPERSON
Buffy McQuillen
Yokayo Pomo, Yuki,
Nomlaki

SECRETARY
Sara Dutschke
Miwok

PARLIAMENTARIAN
Wayne Nelson
Luiseño

COMMISSIONER
Isaac Bojorquez
Ohlone-Costanoan

COMMISSIONER
Stanley Rodriguez
Kumeyaay

COMMISSIONER
Laurena Bolden
Serrano

COMMISSIONER
Reid Milanovich
Cahuilla

COMMISSIONER
Bennae Calac
Pauma-Yuima Band of
Luiseño Indians

ACTING EXECUTIVE
SECRETARY
Steven Quinn

NAHC HEADQUARTERS
1550 Harbor Boulevard
Suite 100
West Sacramento,
California 95691
(916) 373-3710
nahc@nahc.ca.gov

**Native American Heritage Commission
Native American Contact List
San Bernardino County
10/29/2024**

Tribe Name	Fed (F) Non-Fed (N)	Contact Person	Contact Address	Phone #	Email Address
Chemehuevi Indian Tribe	F	Glenn Lodge, Chairman	PO Box 1976 Havasu Lake, CA, 92363	(760) 858-4219	chairman@cit-nsn.gov
Chemehuevi Indian Tribe	F	Kaitlyn Snodgrass, Cultural Director	PO Box 1976 Havasu Lake, CA, 92363	(760) 858-4219	cultural@cit-nsn.gov
Morongo Band of Mission Indians	F	Ann Brierty, THPO	12700 Pumarra Road Banning, CA, 92220	(951) 755-5259	abrierty@morongo-nsn.gov
Morongo Band of Mission Indians	F	Robert Martin, Chairperson	12700 Pumarra Road Banning, CA, 92220	(951) 755-5110	abrierty@morongo-nsn.gov
Quechan Tribe of the Fort Yuma Reservation	F	Manfred Scott, Acting Chairman - Kw'ts'an Cultural Committee	P.O. Box 1899 Yuma, AZ, 85366	(928) 210-8739	culturalcommittee@quechantribe.com
Quechan Tribe of the Fort Yuma Reservation	F	Jill McCormick, Historic Preservation Officer	P.O. Box 1899 Yuma, AZ, 85366	(928) 261-0254	historicpreservation@quechantribe.com
Quechan Tribe of the Fort Yuma Reservation	F	Jordan Joaquin, President, Quechan Tribal Council	P.O.Box 1899 Yuma, AZ, 85366	(760) 919-3600	executivesecretary@quechantribe.com

**Native American Heritage Commission
Native American Contact List
San Bernardino County
10/29/2024**

San Fernando Band of Mission Indians	N	Donna Yocum, Chairperson	P.O. Box 221838 Newhall, CA, 91322	(503) 539-0933	dyocum@sfbmi.org
San Manuel Band of Mission Indians	F	Alexandra McCleary, Senior Manager of Cultural Resources Management	26569 Community Center Drive Highland, CA, 92346	(909) 633-0054	alexandra.mccleary@sanmanuel-nsn.gov
Serrano Nation of Mission Indians	N	Mark Cochran, Co- Chairperson	P. O. Box 343 Patton, CA, 92369	(909) 578-2598	serranonation1@gmail.com
Serrano Nation of Mission Indians	N	Wayne Walker, Co- Chairperson	P. O. Box 343 Patton, CA, 92369	(253) 370-0167	serranonation1@gmail.com
Twenty-Nine Palms Band of Mission Indians	F	Nicolas Garza, Cultural Resources Specialist	46-200 Harrison Place Coachella, CA, 92236	(760) 863-2486	nicolas.garza@29palmsbomi-nsn.gov
Twenty-Nine Palms Band of Mission Indians	F	Sarah O'Brien, Tribal Archivist	46-200 Harrison Place Coachella, CA, 92236	(760) 863-2460	sobrien@29palmsbomi-nsn.gov
Twenty-Nine Palms Band of Mission Indians	F	Christopher Nicosia, Cultural Resources Manager/THPO Manager	46-200 Harrison Place Coachella, CA, 92236	(760) 863-3972	christopher.nicosia@29palmsbomi-nsn.gov

This list is current only as of the date of this document. Distribution of this list does not relieve any person of statutory responsibility as defined in Section 7050.5 of the Health and Safety Code, Section 5097.94 of the Public Resources Code and Section 5097.98 of the Public Resources Code.

This list is only applicable for contacting local Native Americans with regard to cultural resources assessment for the proposed San

APPENDIX C

PALEONTOLOGICAL RESOURCES OVERVIEW



November 20th, 2024

BCR Consulting, LLC
Joseph Orozco
505 W. 8th St.
Claremont, CA 91711

Dear Mr. Orozco,

This letter presents the results of a record search conducted for the San Bernardino County Behavioral Health Treatment Campus Project located in the city of Victorville, San Bernardino County CA. The project site is located east of Cobalt Avenue, south of Palmdale Road, and north of Dos Palmas Road on Township 5 North, Range 5 West, Section 23 of the *Victorville, CA* USGS 7.5 minute quadrangle.

The geologic units underlying the project are composed of alluvial fan deposits from the Pleistocene epoch (Hernandez, Brown, and Cox 2008). Pleistocene alluvial units are considered to be highly paleontologically sensitive. The Western Science Center does not have any localities within the project area or a 1 mile radius, but does have localities within similarly mapped units across Southern California.

Any fossil specimen from the San Bernardino County Behavioral Health Treatment Campus Project would be scientifically significant. Excavation activity associated with the development of the project area would impact the paleontologically sensitive Pleistocene alluvial units, and it is the recommendation of the Western Science Center that a paleontological resource mitigation program be put in place to monitor, salvage, and curate any recovered fossils associated with the study area.

If you have any questions, or would like further information, please feel free to contact me at bstoneburg@westerncentermuseum.org.

Sincerely,




A handwritten signature in black ink, appearing to read 'Brittney Stoneburg', written in a cursive style.

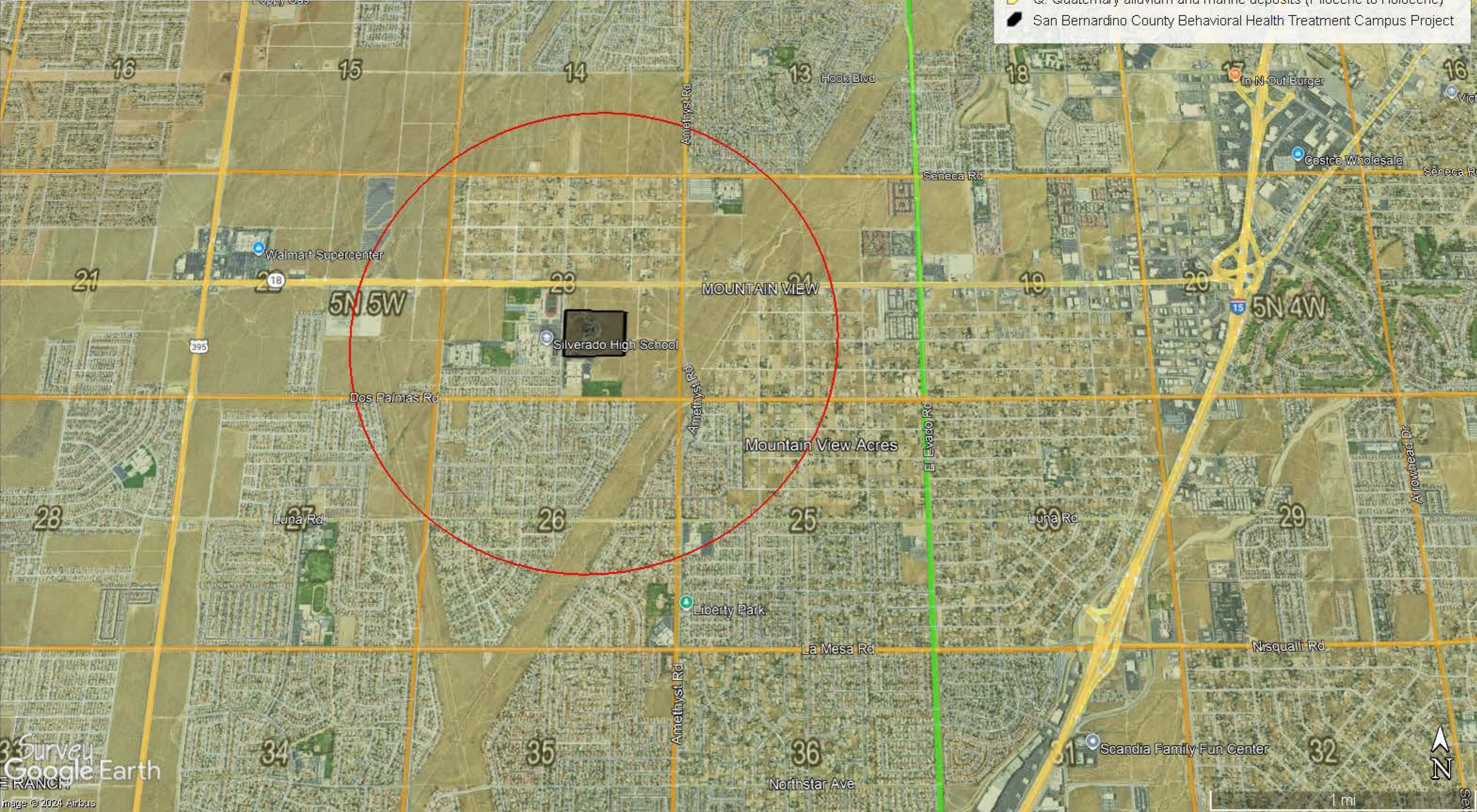
Brittney Elizabeth Stoneburg, MSc
Collections Manager

San Bernardino County Behavioral Health Treatment Campus Project

project area + 1 mile radius

Legend

-  1 Mile Radius
-  Q: Quaternary alluvium and marine deposits (Pliocene to Holocene)
-  San Bernardino County Behavioral Health Treatment Campus Project



APPENDIX D
PROJECT PHOTOGRAPHS



Photo 1: Project Overview (View North).



Photo 2: Project Overview (View South).



Photo 3: Project Overview (View West).

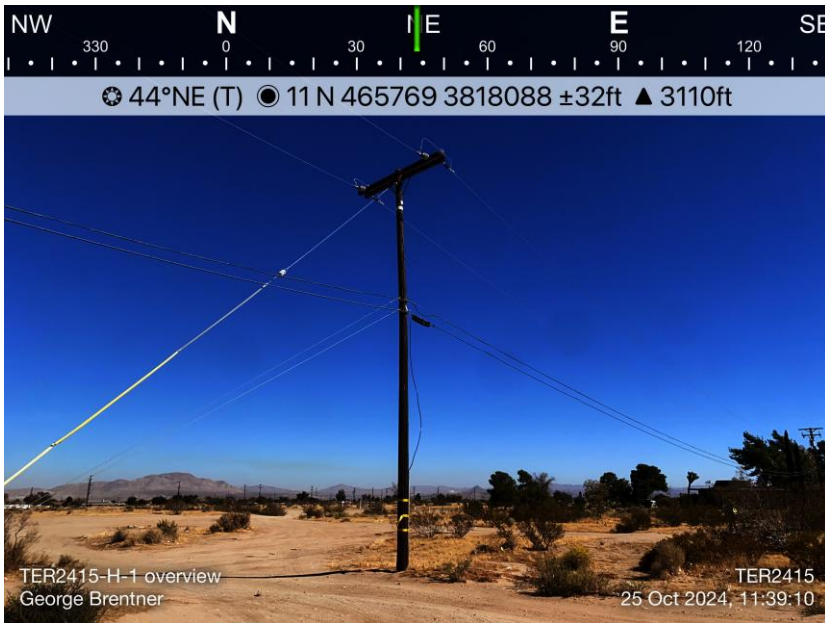


Photo 4: Overview of TER2415-H-1 (View Northeast).



Photo 5: St. John of God Entrance (Daily Press 21 Dec. 2023).



Photo 6: St. John of God Building (View West).



Photo 7: St. John of God Garages (View South).



Photo 8: St. John of God Pool (View West).

APPENDIX E
RECORDS SEARCH BIBLIOGRAPHY

Report List

Victorville

Report No.	Other IDs	Year	Author(s)	Title	Affiliation	Resources
SB-00252	NADB-R - 1060252; Voided - 75-4.2	1975	SMOTHERS, C. N.	SIX CALTRANS PROJECTS, SAN BERNARDINO COUNTY	CALTRANS	
SB-00612	NADB-R - 1060612; Voided - 78-3.1	1978	SAN BERNARDINO COUNTY MUSEUM ASSOCIATION	AN ARCHAEOLOGICAL - HISTORICAL ASSESSMENT FOR THE PROPOSED SYSTEM IMPROVEMENTS FOR A WATER SYSTEM MASTER PLAN FOR VICTOR VALLEY COUNTY WATER DISTRICT	SAN BERNARDINO COUNTY MUSEUM ASSOCIATION	36-000060, 36-000063, 36-000064, 36-000065, 36-000158, 36-000966, 36-000967, 36-000968, 36-010614
SB-00614	NADB-R - 1060614; Voided - 78-3.3	1978	FOWLER, DON D., ELIZABETH BUDY, DENNIS DESART, JOYCE BANATH, and ALMA SMITH	FINAL REPORT: CLASS II CULTURAL RESOURCES FIELD SAMPLING INVENTORY ALONG PROPOSED IPP TRANSMISSION LINE CORRIDORS, UTAH - NEVADA - CALIFORNIA	DESERT RESEARCH INSTITUTE, UNIVERSITY OF NEVADA, RENO	36-000030, 36-000262, 36-000434, 36-002162, 36-002326, 36-002327, 36-002328, 36-002330, 36-002331, 36-002332, 36-002333, 36-002334, 36-002335, 36-002336, 36-002337, 36-002338, 36-002339, 36-002340, 36-002341, 36-002342, 36-002343, 36-002344, 36-002345, 36-002346
SB-00763	NADB-R - 1060763; Voided - 79-3.3A-B	1979	GREENWOOD, ROBERTA S. and MICHAEL J. MCINTYRE	CLASS III CULTURAL RESOURCE SURVEY, VICTORVILLE-MCCULLOUGH TRANSMISSION LINES 1 AND 2 (2 VOLS.).	GREENWOOD AND ASSOCIATES	36-000140, 36-000262, 36-000263, 36-000264, 36-000434, 36-002097, 36-002100, 36-002162, 36-002163, 36-002223, 36-002340, 36-002341, 36-002342, 36-002344, 36-003159, 36-003160, 36-003161, 36-003162, 36-003163, 36-003164, 36-003165, 36-003166, 36-003167, 36-003168, 36-003169, 36-003170, 36-003171, 36-003172, 36-003173, 36-003174, 36-003175, 36-003176, 36-003177, 36-003178, 36-003179, 36-003180, 36-003181, 36-003182, 36-003183, 36-003184, 36-003185, 36-003186, 36-003187, 36-003188, 36-003189
SB-02668	NADB-R - 1062668; Voided - 92.6.9	1992	MCKENNA, JEANETTE A.	ARCHAEOLOGICAL INVESTIGATIONS OF WELL SITES AND PROPOSED FACILITY LOCATIONS FOR THE VICTOR VALLEY WATER DISTRICT, VICTORVILLE, SAN BERNARDINO COUNTY, CALIFORNIA	MCKENNA ET AL.	
SB-03988	NADB-R - 1063988	2003	ALEXANDROWICZ, JOHN STEPHEN	CULTURAL & PALEONTOLOGICAL RESOURCES MONITORING FOR LOTS 66-98, TRACT 16172, THE GALAXY II DEVELOPMENT, CITY OF VICTORVILLE, SAN BERNARDINO COUNTY, CA. 20PP	ARCHAEOLOGICAL CONSULTING SERVICES	

Report List

Victorville

Report No.	Other IDs	Year	Author(s)	Title	Affiliation	Resources
SB-04299	NADB-R - 1064299; Paleo -	2001	Alexandrowicz, John Stephen and Barbara Loren-Webb	Cultural and Paleontological Resources Monitoring for Tract No. 16135, The Galaxy Development, City of Victorville, San Bernardino County, California	Archaeological Consulting Services	36-012336
SB-04304	NADB-R - 1064304	2004	CERRETO, RICHARD and CHRISTY MALAN	CULTURAL RESOURCE ASSESSMENT FOR TENTATIVE TRACT NO. 16524, CITY OF VICTORVILLE, SAN BERNARDINO COUNTY, CA. 15PP	ANALYTIC ARCHAEOLOGY	
SB-04543	NADB-R - 1064543	2005	ALEXANDROWICZ, JOHN STEPHEN	HISTORICAL & PALEONTOLOGICAL RESOURCES MONITORING FOR TRACT NO. 16171, THE GALAXY DEVELOPMENT, CITY OF VICTORVILLE, SAN BERNARDINO COUNTY, CA. 21PP	ACS	
SB-04973	NADB-R - 1064973	2005	Weatherbee, Matthew	Identification and Evaluation of Historic Properties: Victor Valley Water District Infrastructure Improvements In and Near the City of Victorville, San Bernardino County, California.	CRM Tech	36-007694
SB-07156	NADB-R - 1067156	2011	Tang, Bai "Tom", Daniel Ballester, and Nina Gallardo	Historical/Archaeological Resources Survey Report: Water Supply System Improvements Projects, Fiscal Years 2010/2011 – 2014/2015, Victorville Water District, San Bernardino County, California.	CRM TECH	36-000968, 36-002910, 36-006793, 36-007545, 36-007694, 36-009360, 36-010316, 36-012658
SB-08052	Caltrans -	2016	Everson, Dicken	ARCHAEOLOGICAL SURVEY REPORT FOR THE STATE ROUTE 18 WIDENING, RAISED CURB MEDIAN, AND DRAINAGE IMPROVEMENT PROJECT	CalTrans	36-029461, 36-029462

Resource List

Victorville

Primary No.	Trinomial	Other IDs	Type	Age	Attribute codes	Recorded by	Reports
P-36-007156	CA-SBR-007156H	Resource Name - 1180-1	Site	Historic	AH04		SB-02641
P-36-007694	CA-SBR-007694H	Resource Name - LADWP Boulder Transmission Lines; Other - Lytle Canyon Transmission Lines; Other - Boulder Transmission Line 1, 2, and 3 segment; Other - SRI-4008; Other - LSA's Site #8; Other - Cingular ES-130-01 / DWP Almond No. 22316 Transmission Tower	Structure, Site	Historic	AH04; AH07; HP11; HP37		SB-01566, SB- 03011, SB-03071, SB-03110, SB- 03530, SB-03537, SB-04427, SB- 04861, SB-04973, SB-05335, SB- 05354, SB-05357, SB-05466, SB- 05508, SB-05698, SB-05741, SB- 05985, SB-06517, SB-07071, SB- 07156, SB-07170, SB-07318, SB- 07358, SB-07495, SB-07506, SB- 07523, SB-07540, SB-07541, SB- 07565, SB-07818, SB-07870, SB- 07971, SB-08031, SB-08238, SB- 08302, SB-08303, SB-08333, SB-08406