

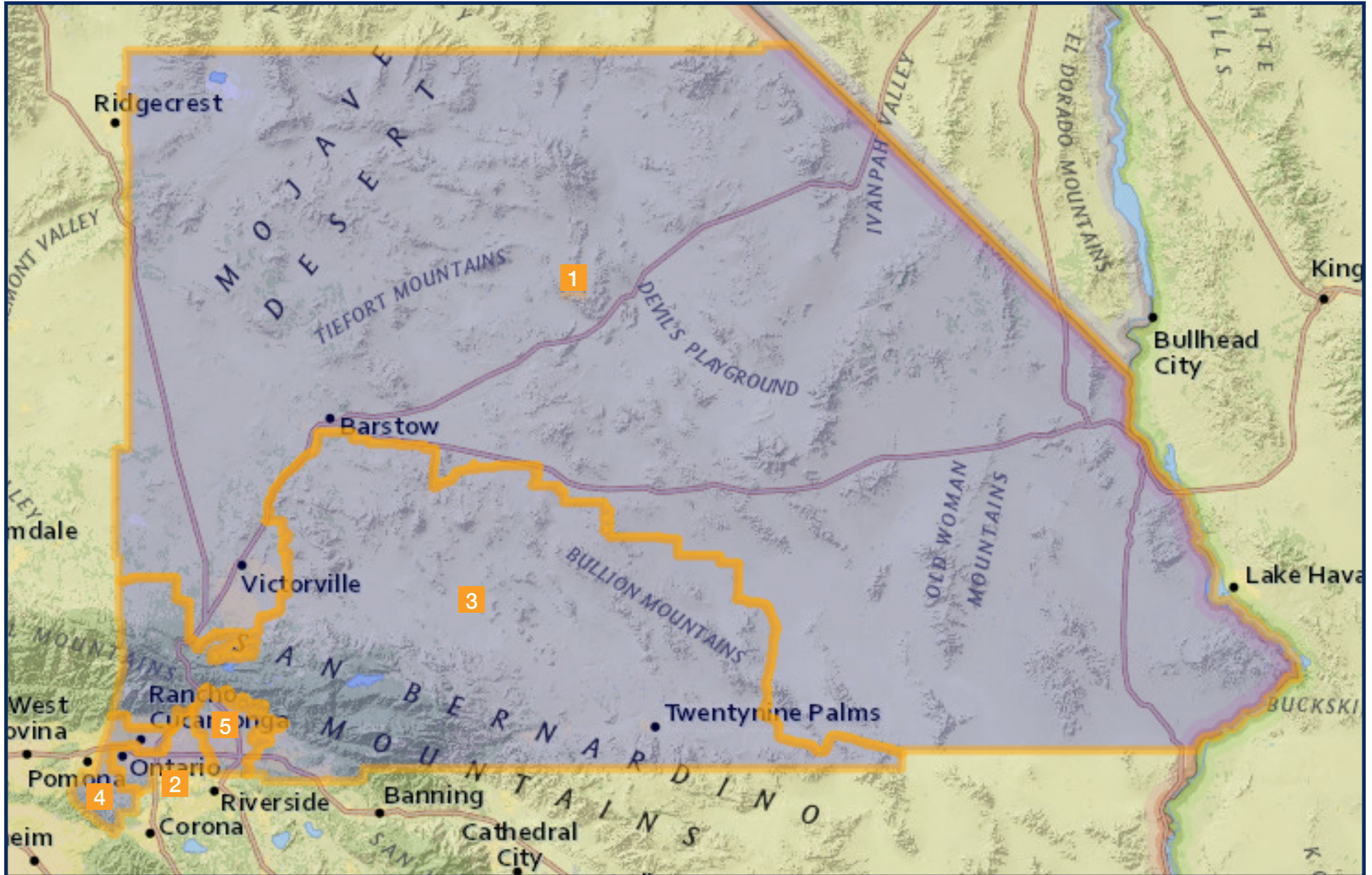
REDISTRICTING SAN BERNARDINO

PUBLIC SUBMISSION 6

	District 1	District 2	District 3	District 4	District 5
2020 Census Count*	440,158	432,635	432,788	427,216	447,355
Deviation #	4,128	-3,395	-3,242	-8,814	11,325
Deviation %	0.9%	-0.8%	-0.7%	-2.1%	2.5%
2010 Census Count	399,028	408,092	411,106	401,170	415,777
2019 CVAP*	260,607	254,782	297,717	288,483	259,423
2010 CVAP	229,726	201,304	271,940	253,140	219,782
% Unincorporated	14.5%	11.0%	28.1%	3.8%	11.7%

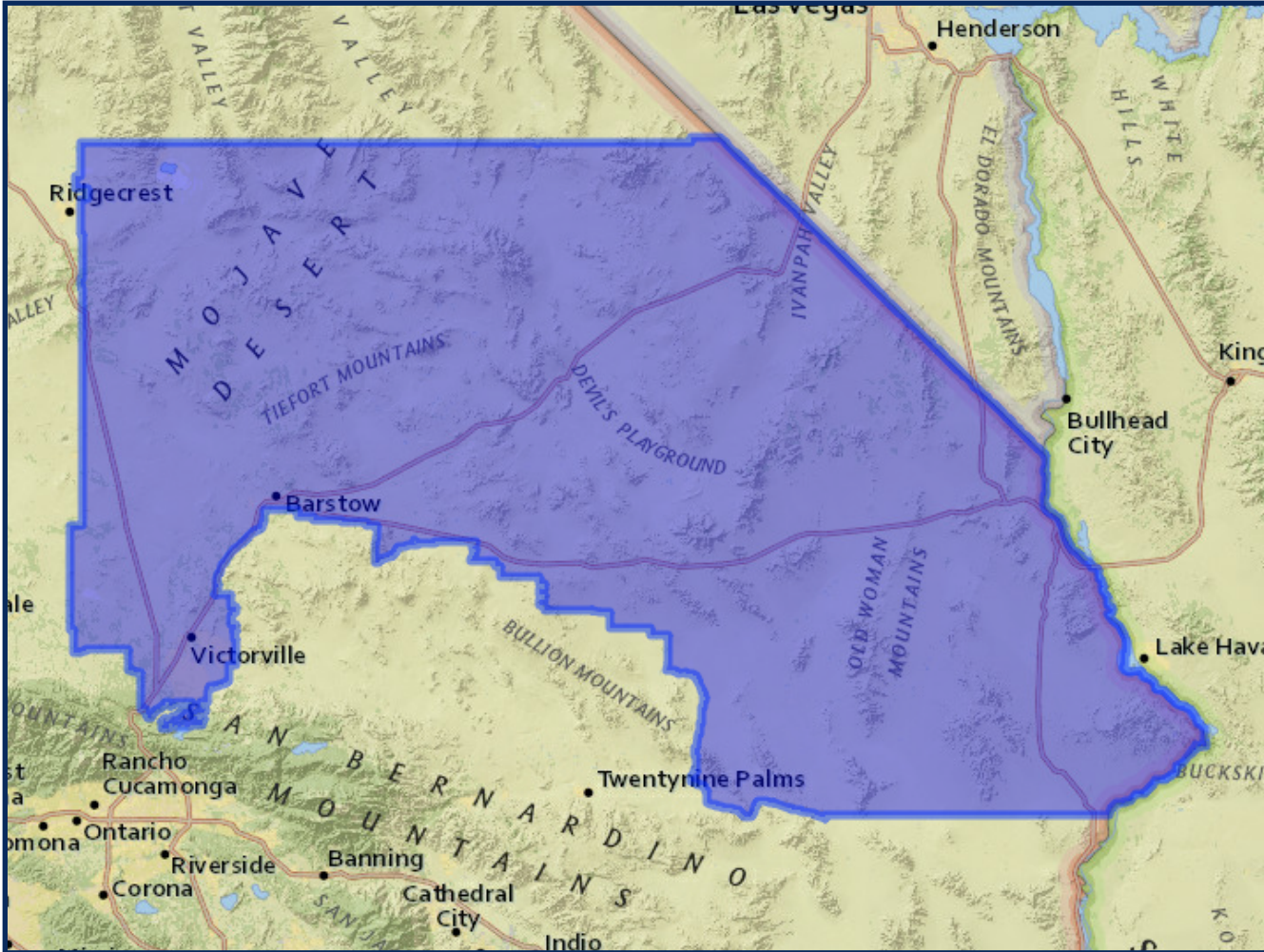
**Adjusted for prisoner reallocation*

REDISTRICTING SAN BERNARDINO PUBLIC SUBMISSION 6



REDISTRICTING SAN BERNARDINO PUBLIC SUBMISSION 6

District 1

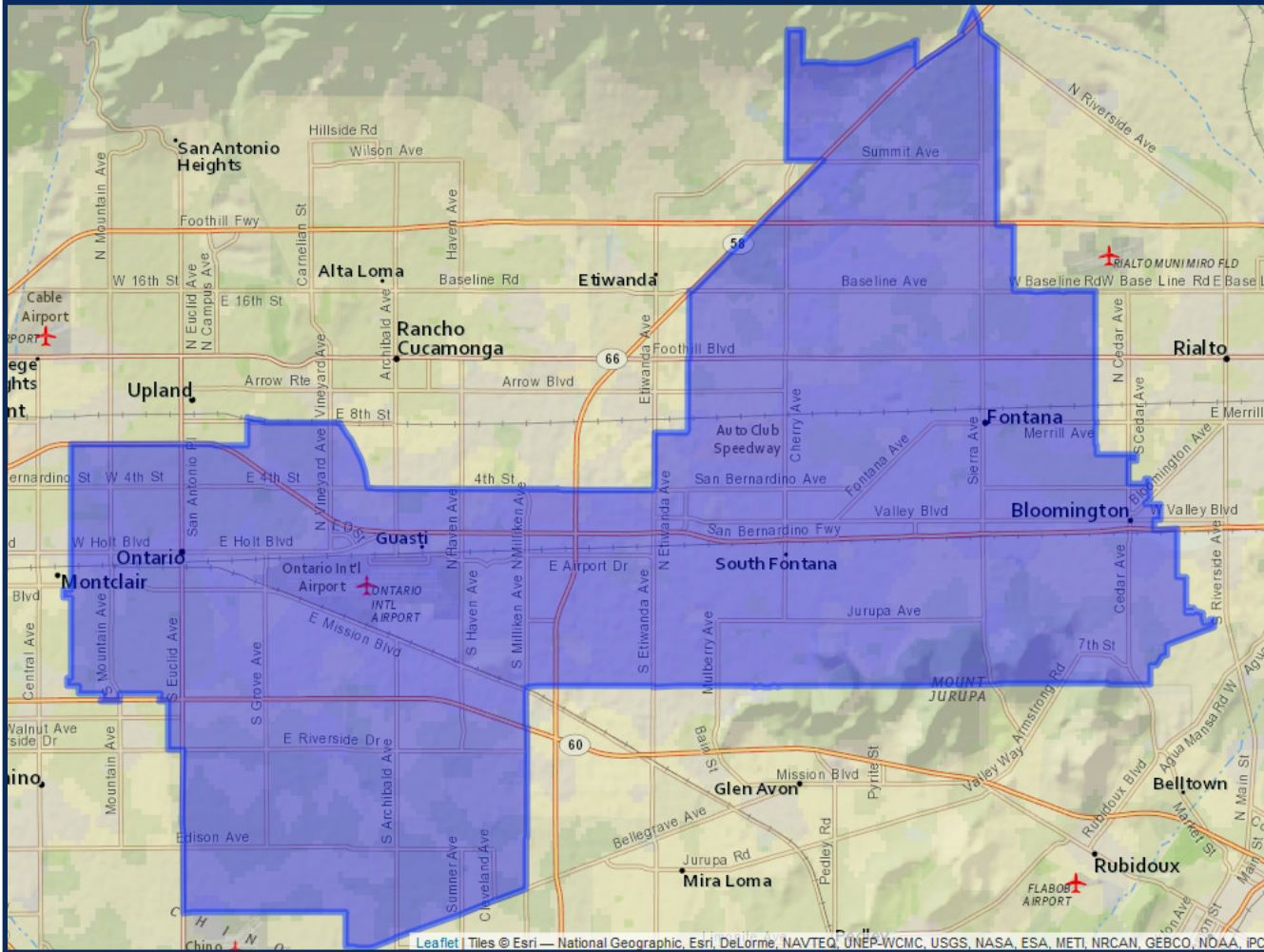


	2020 Count*		2019 CVAP*	
Total	440,158		260,607	
White	131,586	29.90%	110,755	42.50%
Black	49,222	11.18%	29,045	11.15%
Asian	13,867	3.15%	6,923	2.66%
Hispanic	220,775	50.16%	105,509	40.49%

*Adjusted for prisoner reallocation

REDISTRICTING SAN BERNARDINO PUBLIC SUBMISSION 6

District 2

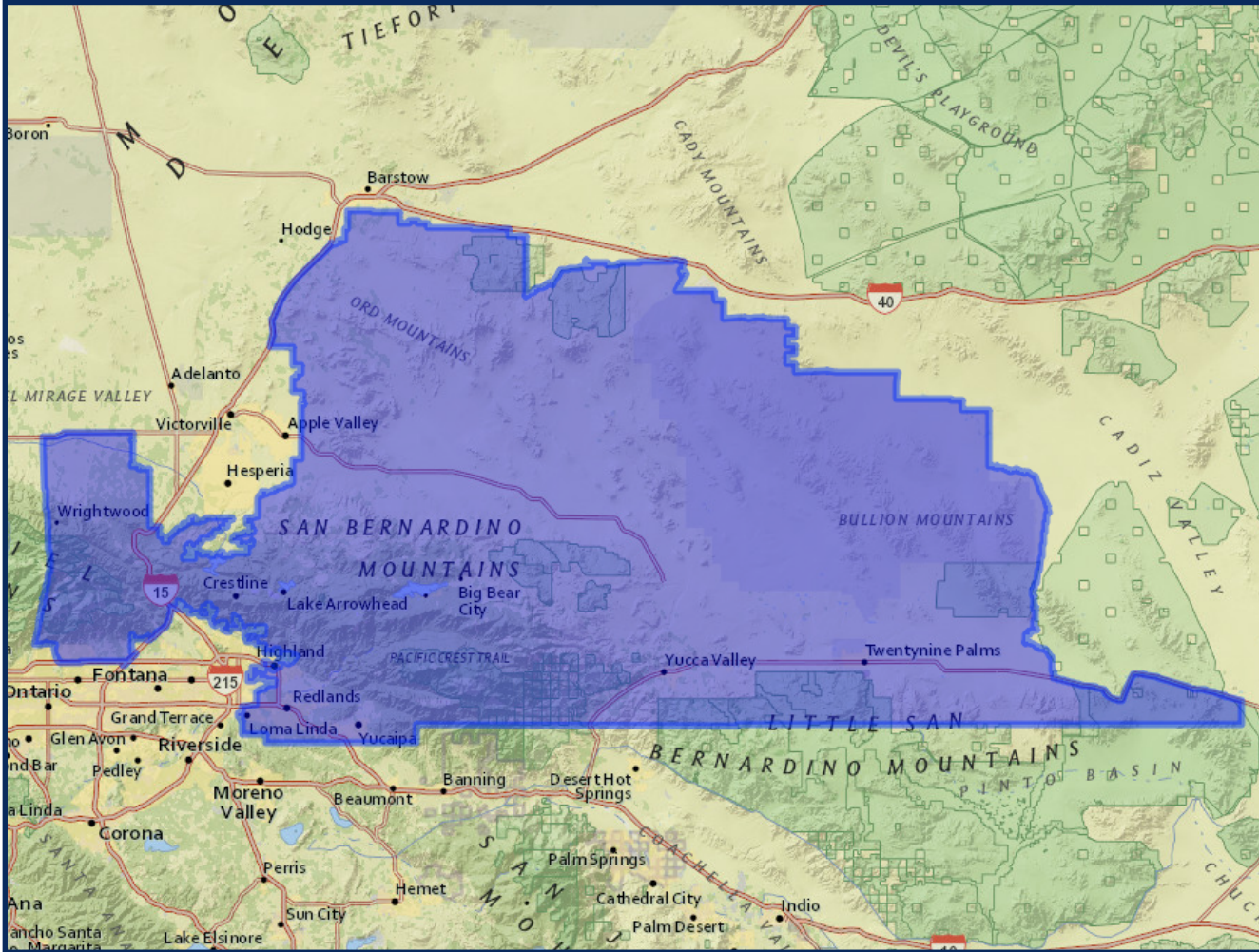


	2020 Count*		2019 CVAP*	
Total	432,635		254,782	
White	53,614	12.39%	49,404	19.39%
Black	29,429	6.80%	21,190	8.32%
Asian	33,506	7.74%	15,424	6.05%
Hispanic	303,376	70.12%	163,094	64.01%

*Adjusted for prisoner reallocation

REDISTRICTING SAN BERNARDINO PUBLIC SUBMISSION 6

District 3

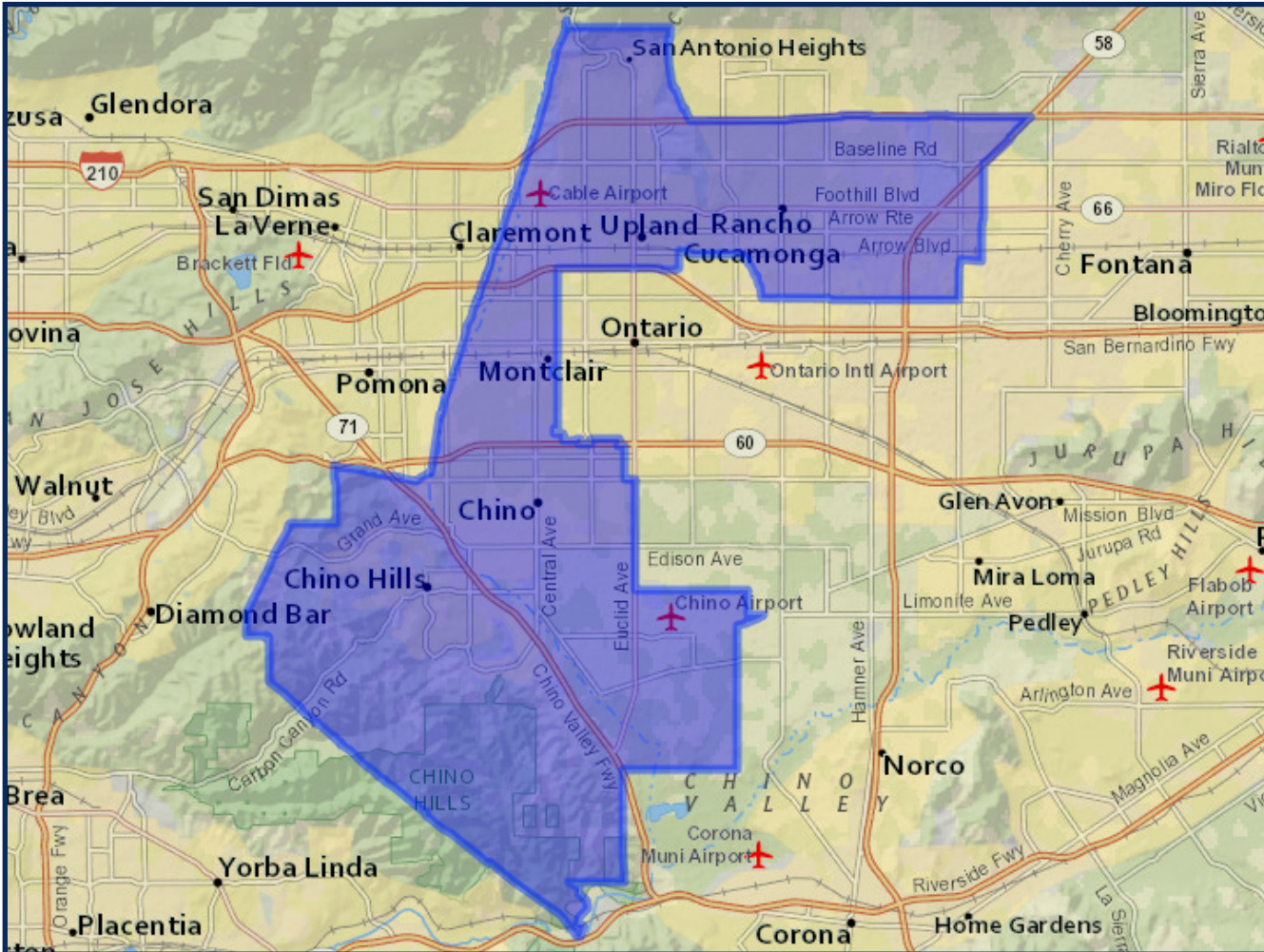


	2020 Count*	2019 CVAP*
Total	432,788	297,717
White	211,667 48.91%	176,167 59.17%
Black	20,274 4.68%	14,751 4.95%
Asian	33,225 7.68%	17,078 5.74%
Hispanic	142,281 32.88%	79,738 26.78%

*Adjusted for prisoner reallocation

REDISTRICTING SAN BERNARDINO PUBLIC SUBMISSION 6

District 4

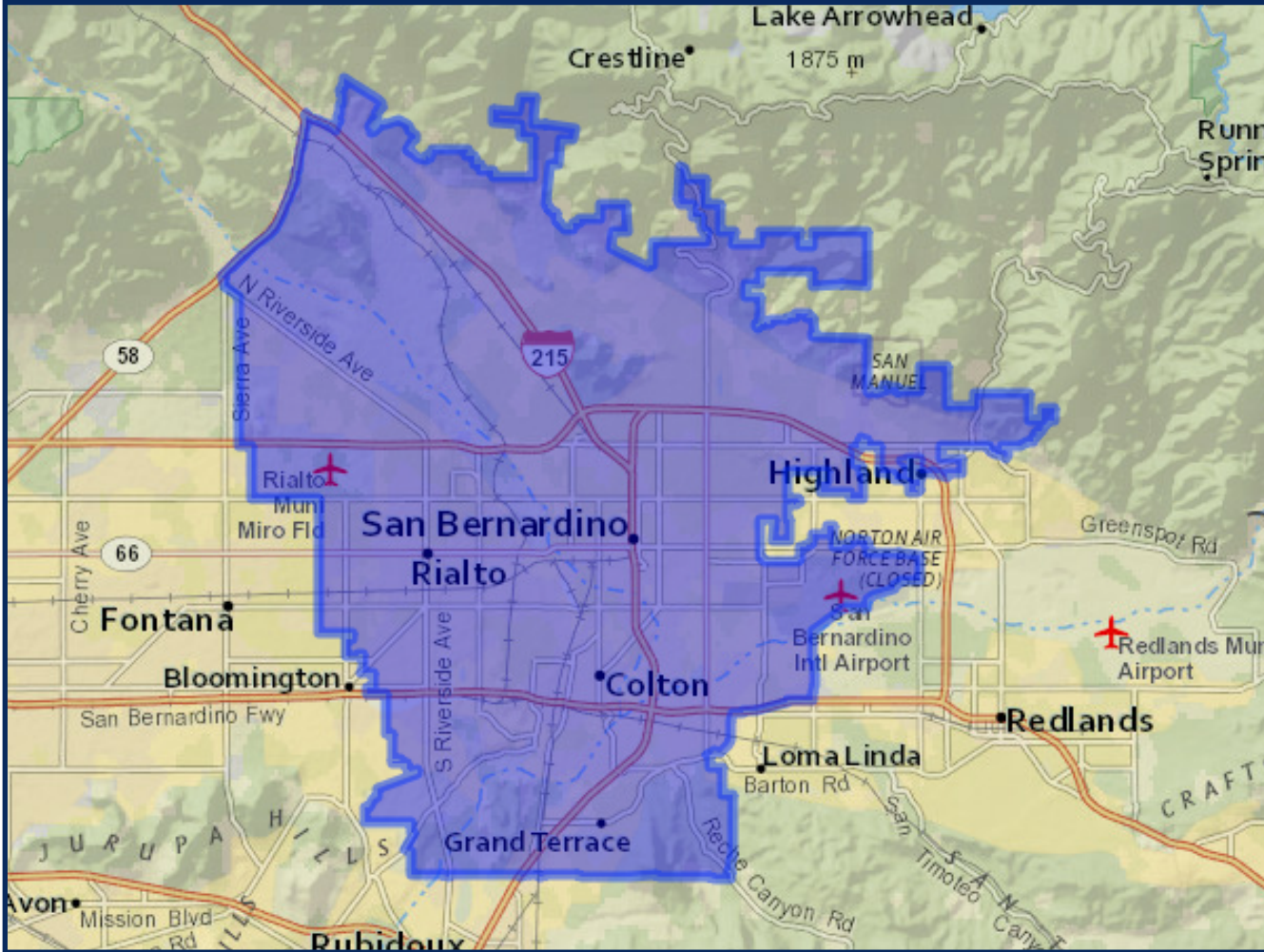


	2020 Count*		2019 CVAP*	
Total	427,216		288,483	
White	111,700	26.15%	102,267	35.45%
Black	26,523	6.21%	20,499	7.11%
Asian	79,207	18.54%	39,627	13.74%
Hispanic	192,028	44.95%	115,617	40.08%

*Adjusted for prisoner reallocation

REDISTRICTING SAN BERNARDINO PUBLIC SUBMISSION 6

District 5



	2020 Count*		2019 CVAP*	
Total	447,355		259,423	
White	56,599	12.65%	54,266	20.92%
Black	48,090	10.75%	38,948	15.01%
Asian	16,271	3.64%	9,701	3.74%
Hispanic	311,980	69.74%	150,081	57.85%

*Adjusted for prisoner reallocation