

RESOLUTION NO. 2025-182

A RESOLUTION OF THE BOARD OF SUPERVISORS OF SAN BERNARDINO COUNTY, STATE OF CALIFORNIA, REGARDING THE FIRST CYCLE 2025 POLICY PLAN LAND USE ELEMENT AMENDMENT

On Tuesday, August 19, 2025, on motion by Supervisor Baca, Jr., duly seconded by Supervisor Hagman, and carried, the following resolution is adopted by the Board of Supervisors of San Bernardino County, State of California.

WHEREAS, the Policy Plan serves as the general plan for San Bernardino County; and

WHEREAS, Section 65358 of the Government Code requires that any mandatory element of a general plan shall be amended no more than four times during any calendar year; and

WHEREAS, the Policy Plan amendments contained in this resolution constitute the first cycle amendment to the Policy Plan Land Use Element during the 2025 calendar year; and

WHEREAS, properly noticed public hearings have been held before the Planning Commission and the Board of Supervisors ("Board") of San Bernardino County, State of California, pursuant to the Planning and Zoning Law (Government Code sections 65000 *et seq.*) and the San Bernardino County Development Code (San Bernardino County Code sections 81.01.010 *et seq.*) for the Policy Plan amendments set forth within this resolution; and

WHEREAS, the Policy Plan amendments set forth within this resolution has been determined by the Board to be consistent with the Policy Plan and are adopted pursuant to Government Code section 65356 and San Bernardino County Code section 86.12.060; and

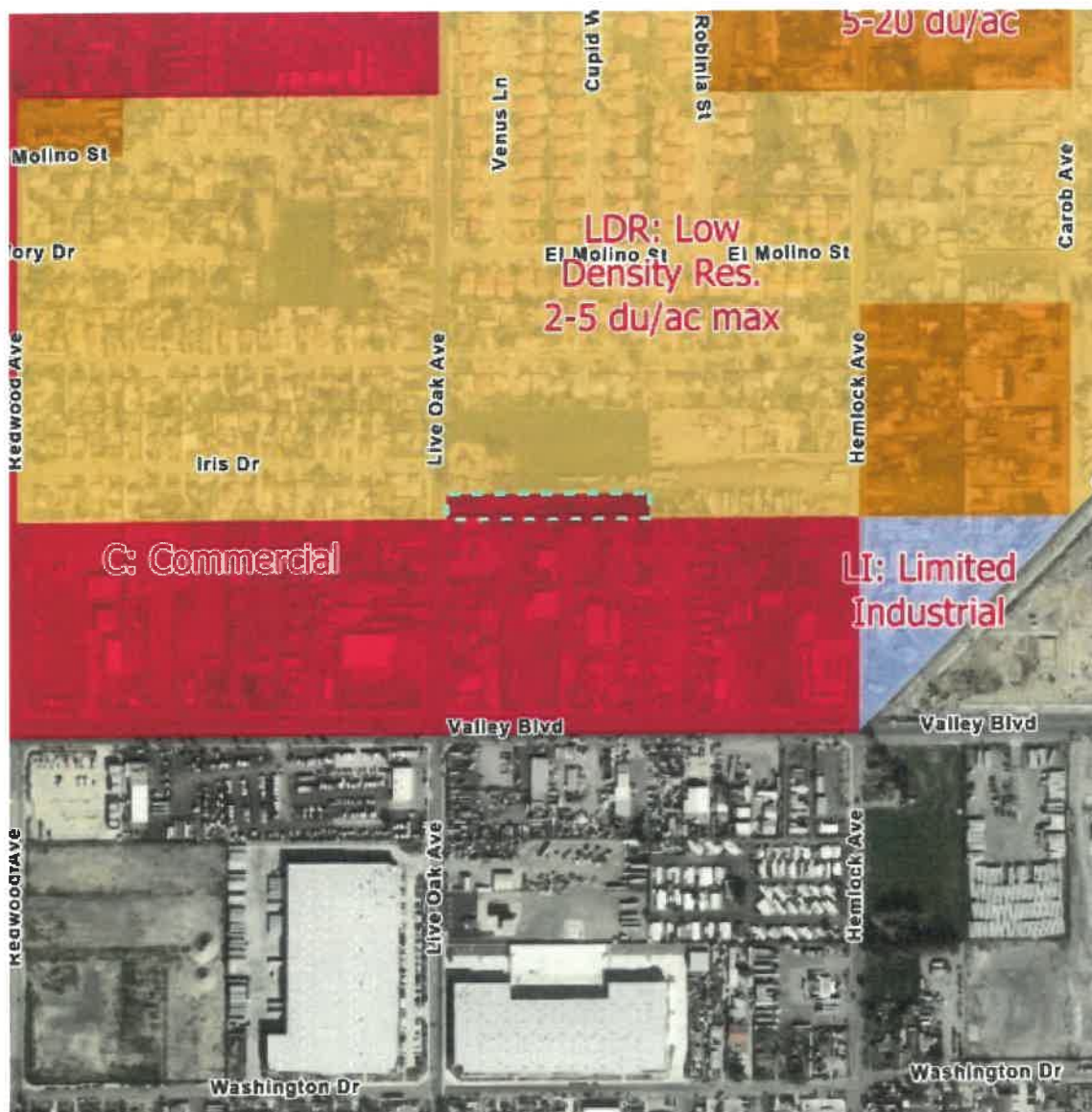
WHEREAS, the findings set forth in the Report/Recommendation to the Board and Record of Action adopted by the Board on August 19, 2025, concerning the Policy Plan amendments set forth within this resolution are incorporated herein by reference and are hereby adopted by the Board.

THEREFORE, BE IT RESOLVED, that the Board of Supervisors hereby amends Policy Plan Land Use Element, LU-1 Land Use Map as follows:

SECTION 1. The above recitals are true and correct and are hereby incorporated by this reference.

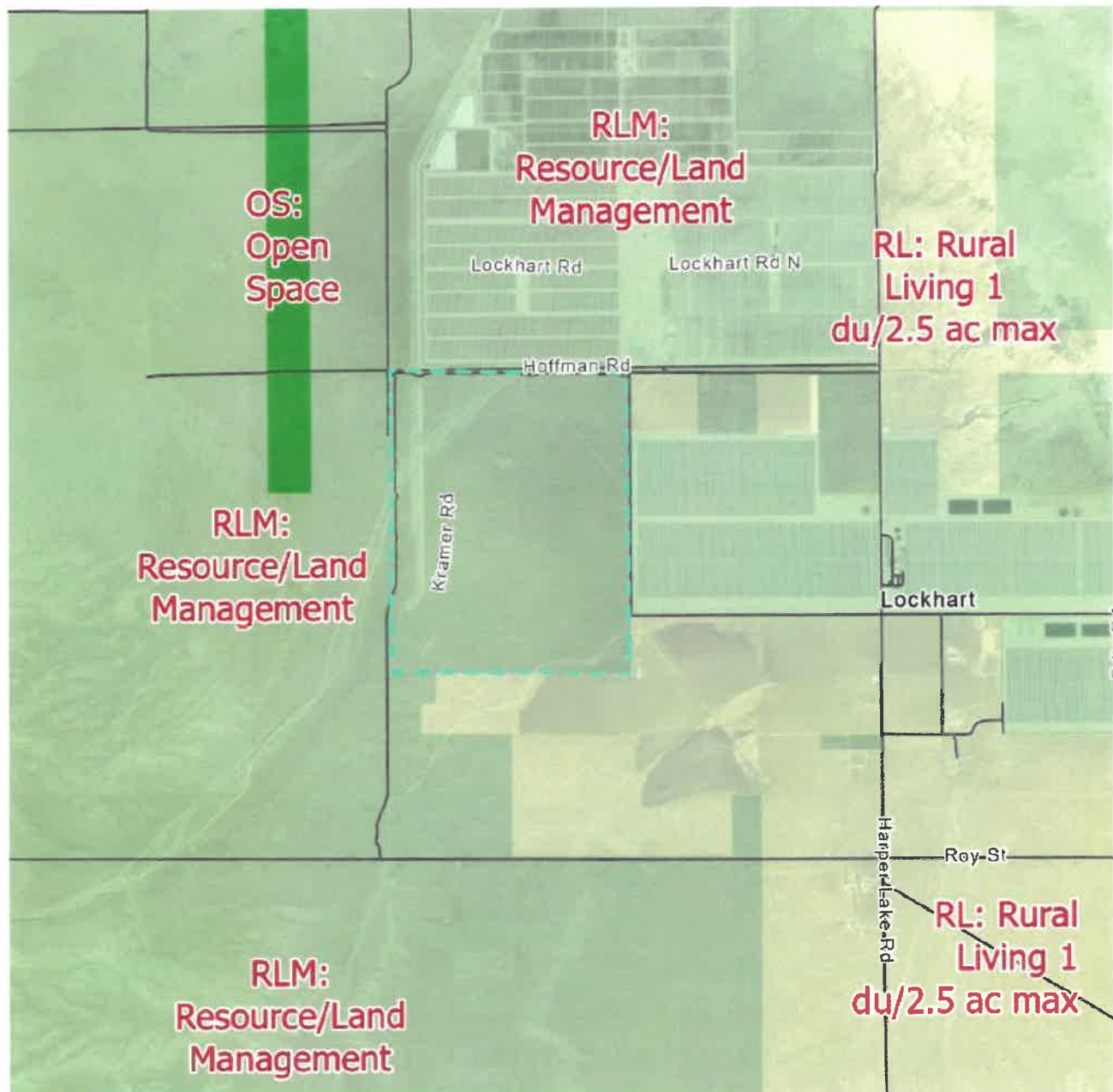
SECTION 2. The Policy Plan Land Use Element, LU-1 Land Use Map is amended as shown in Figure 1 on the attached map from Low Density Residential (LDR) Land Use Category designation to Commercial (C) Land Use Category designation on one parcel totaling 1.13 acres identified as Assessor Parcel Number 0235-031-04, located in the unincorporated Fontana area.

Figure 1



SECTION 3. The Policy Plan Land Use Element, LU-1 Land Use Map is amended as shown on Figure 2 on the attached map from Rural Living (RL) Land Use Category designation to Resource Land Management (RLM) Land Use Category designation on one parcel totaling 822 acres identified as Assessor Parcel Number 0490-183-65, located in the unincorporated Hinkley area.

Figure 2



SECTION 5. The Policy Plan amendments shall become effective 30 days after the adoption of this resolution. This resolution was passed and adopted by the Board of Supervisors of San Bernardino County, State of California, by the following vote:

ABSENT: SUPERVISORS: None

* * * * *

STATE OF CALIFORNIA)
) ss.
SAN BERNARDINO COUNTY)

LYNNA MONELL
Clerk of the Board of Supervisors

By [Signature] Deputy

By:

Date: 8/20/25