



**SECTION H**

**AS-BUILT DRAWINGS**

**COUNTY SERVICE AREA (CSA) 70  
F MORONGO VALLEY –  
TANK REPLACEMENT PROJECT**

**FOR**

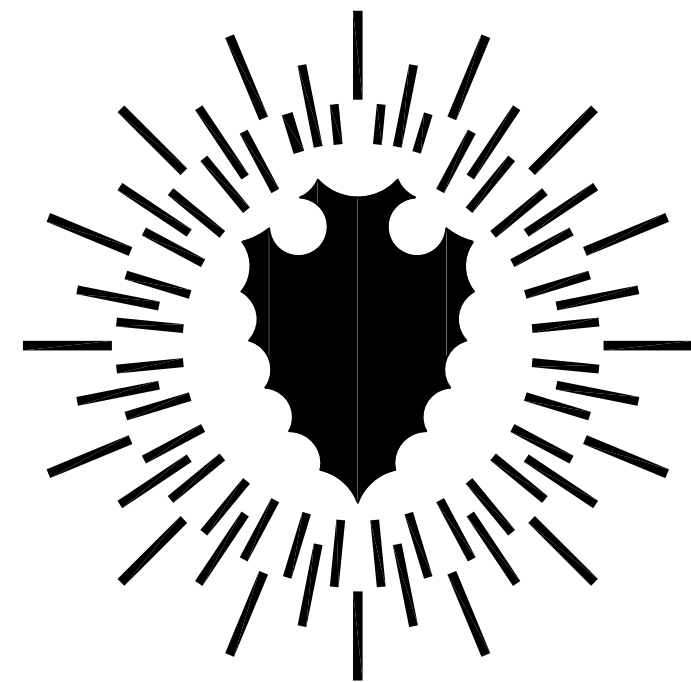
**COUNTY SERVICE AREA (CSA) 70 F  
SAN BERNARDINO, CALIFORNIA**

**PROJECT NO.: 30.30.0157**

COUNTY OF SAN BERNARDINO  
 OFFICE OF SPECIAL DISTRICTS  
 DEVELOPMENT SERVICES DIVISION

DATE: AUGUST 1997  
 PROJECT MANAGER: GARY MARTIN  
 PROJECT NO. 940018  
 PROJECT NAME: CSA 70F RESERVOIR 2 - 211,000 GALLON TANK

1853



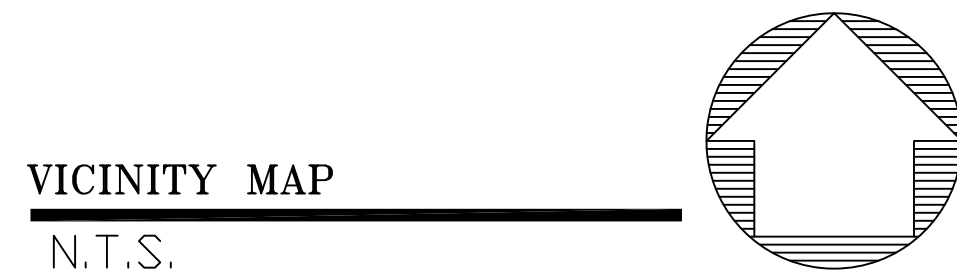
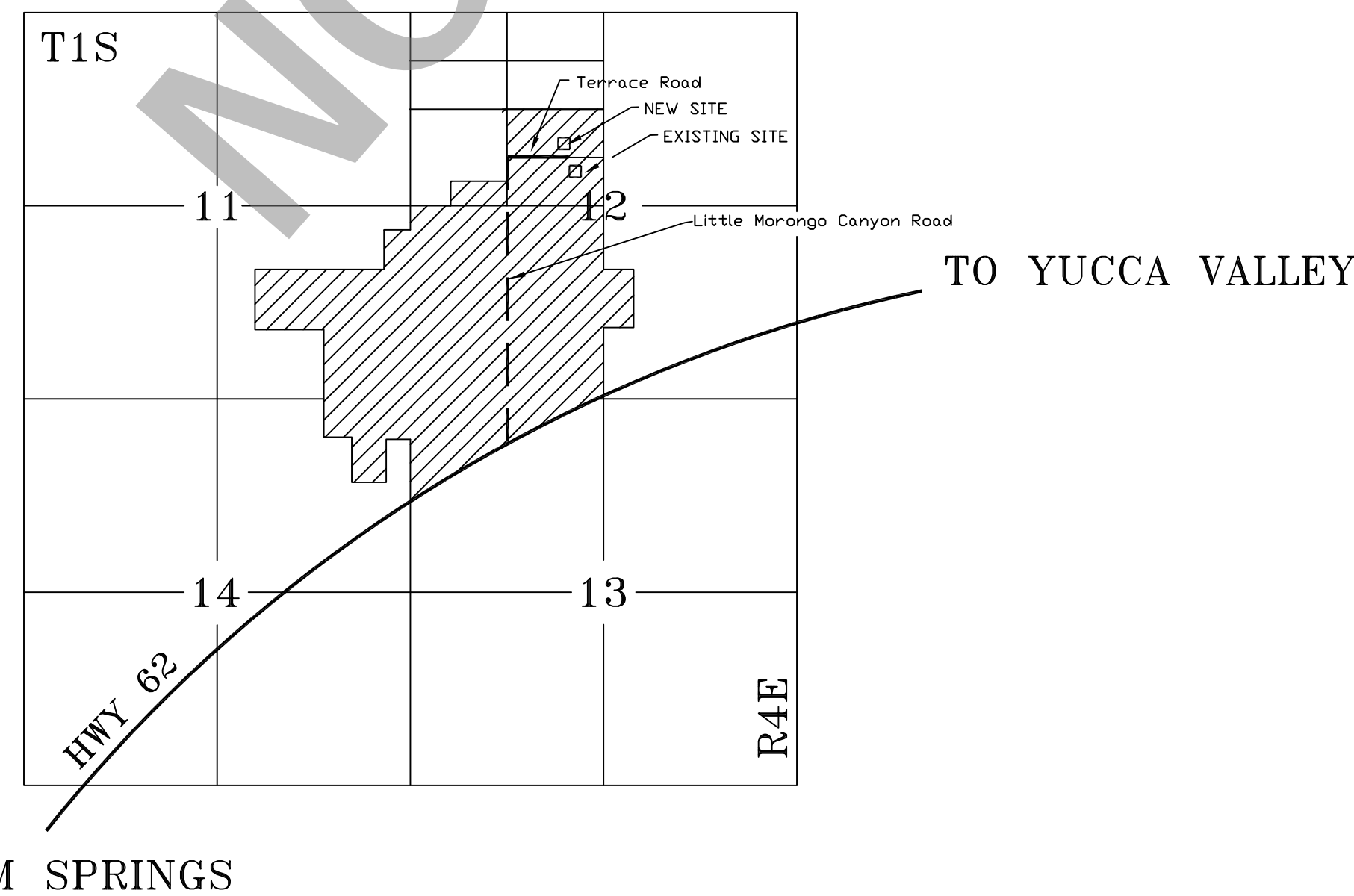
COUNTY OF SAN BERNARDINO

BOARD OF SUPERVISORS

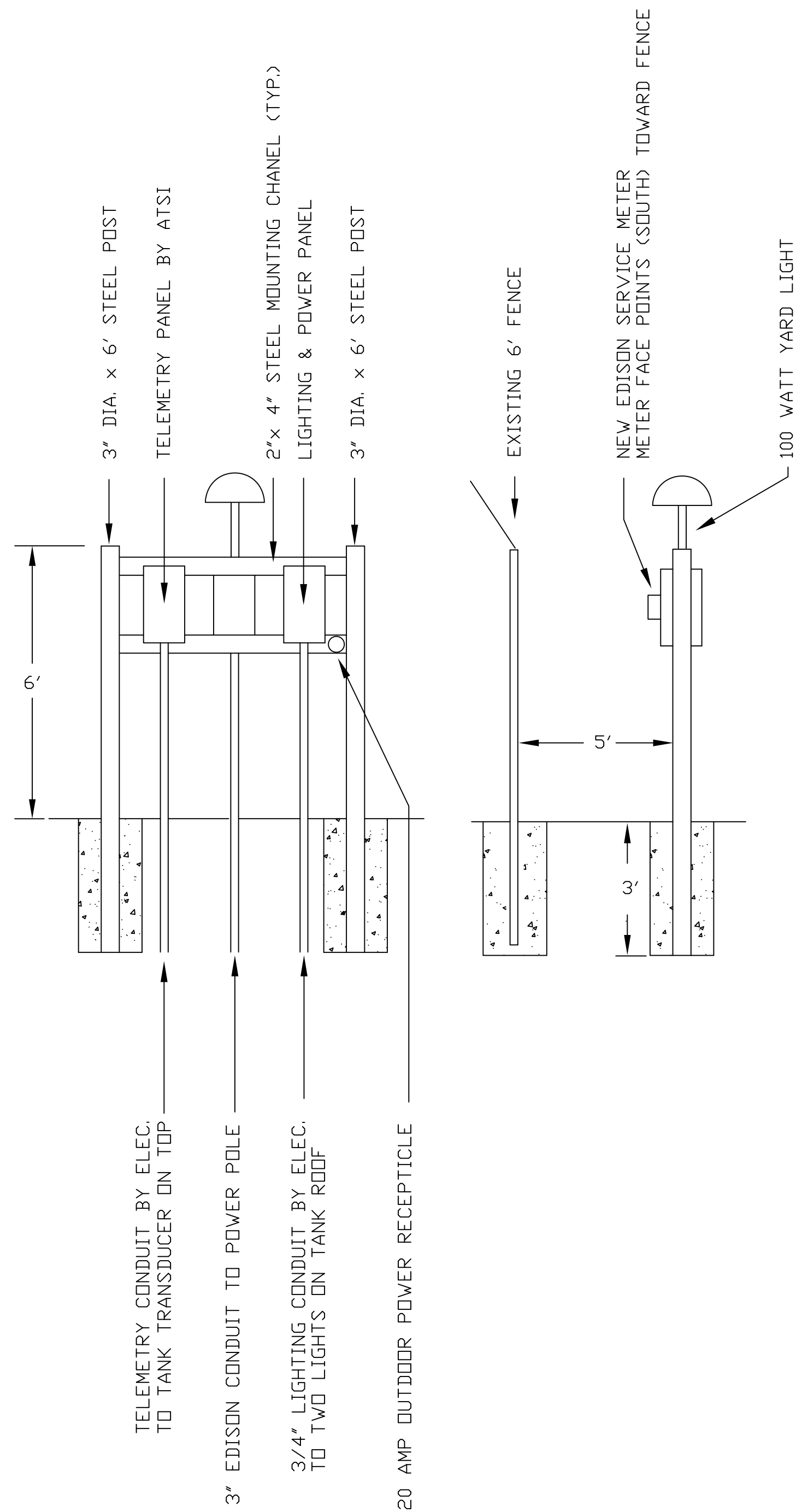
MRS. MARSHA TUROCI . . . . . FIRST DISTRICT  
 MR. JOHN D MIKELS . . . . . SECOND DISTRICT  
 MRS. BARBARA C. RIORDAN . . . . . THIRD DISTRICT  
 MR. LARRY WALKER, CHAIRMAN . . . . . FOURTH DISTRICT  
 MR. JERRY EAVES . . . . . FIFTH DISTRICT

CONSTRUCTION PLANS FOR

CSA 70 - IMPROVEMENT ZONE F  
 MORONGO VALLEY - RESERVOIR 2  
 NEW 211,000 GALLON TANK  
 SPECIAL PURPOSE GRANT

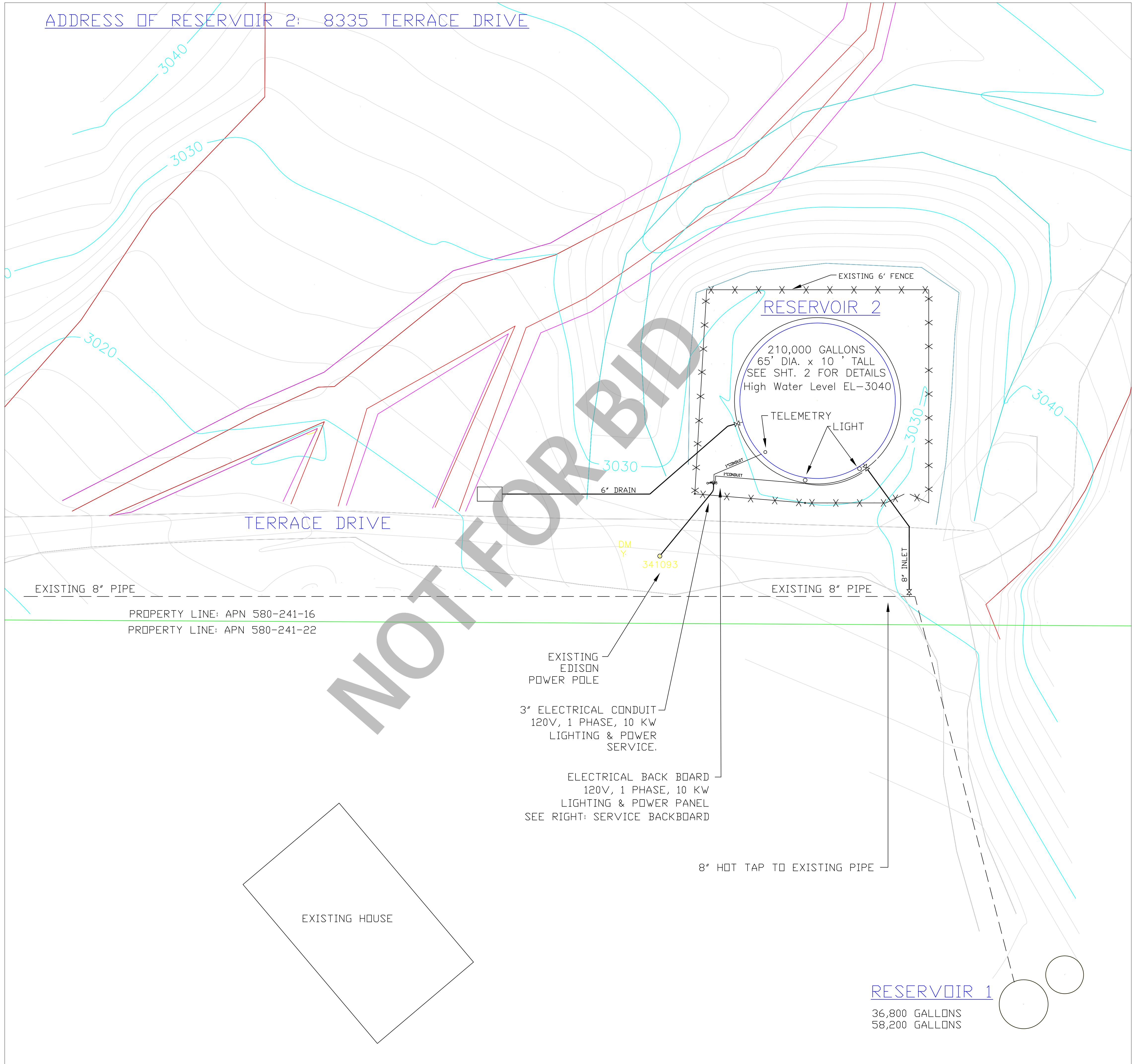


SHEET NO.	INDEX OF SHEETS
0	COVER SHEET
1	SITE PLAN
2	TANK ELEVATIONS AND PROFILES
3	TANK CONSTRUCTION AND DETAILS 1
4	TANK CONSTRUCTION AND DETAILS 2



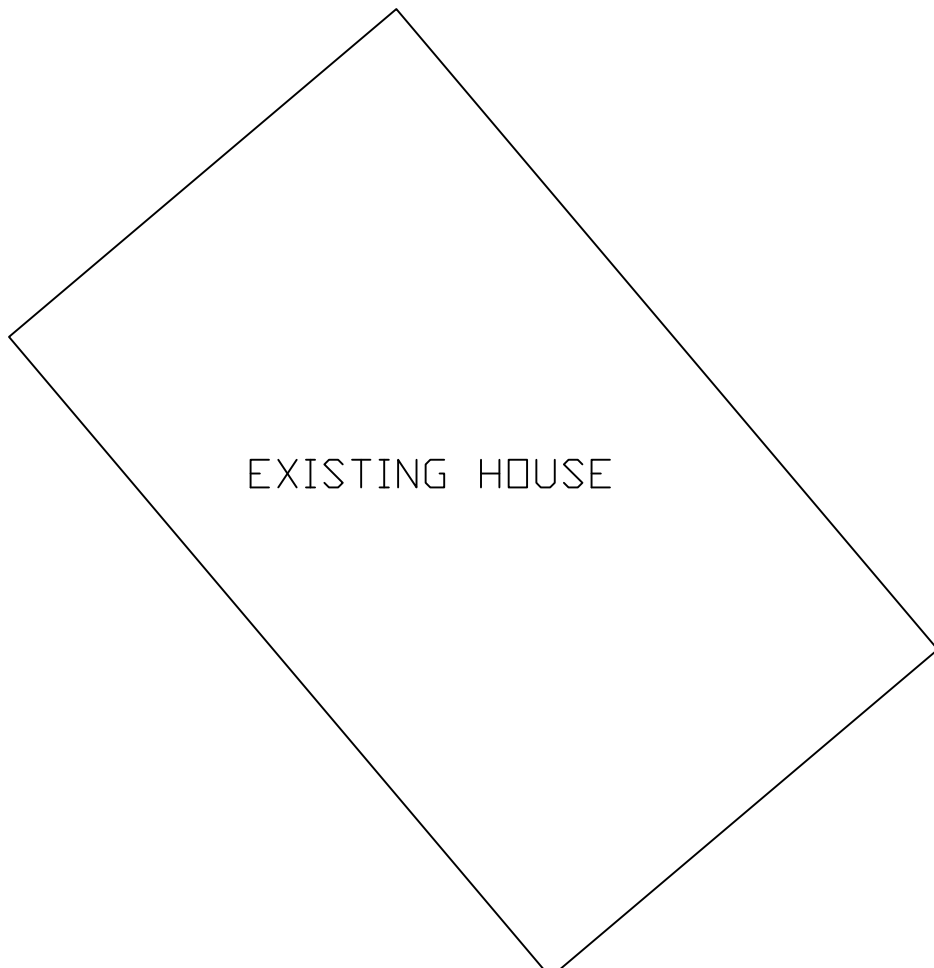
**ELECTRICAL SERVICE BACKBOARD**

SCALE: NONE



ADDRESS OF RESERVOIR 2: 8335 TERRACE DRIVE

EXISTING 8" PIPE  
 PROPERTY LINE: APN 580-241-16  
 PROPERTY LINE: APN 580-241-22



**RESERVOIR 1**

36,800 GALLONS  
 58,200 GALLONS

NO.	REVISION

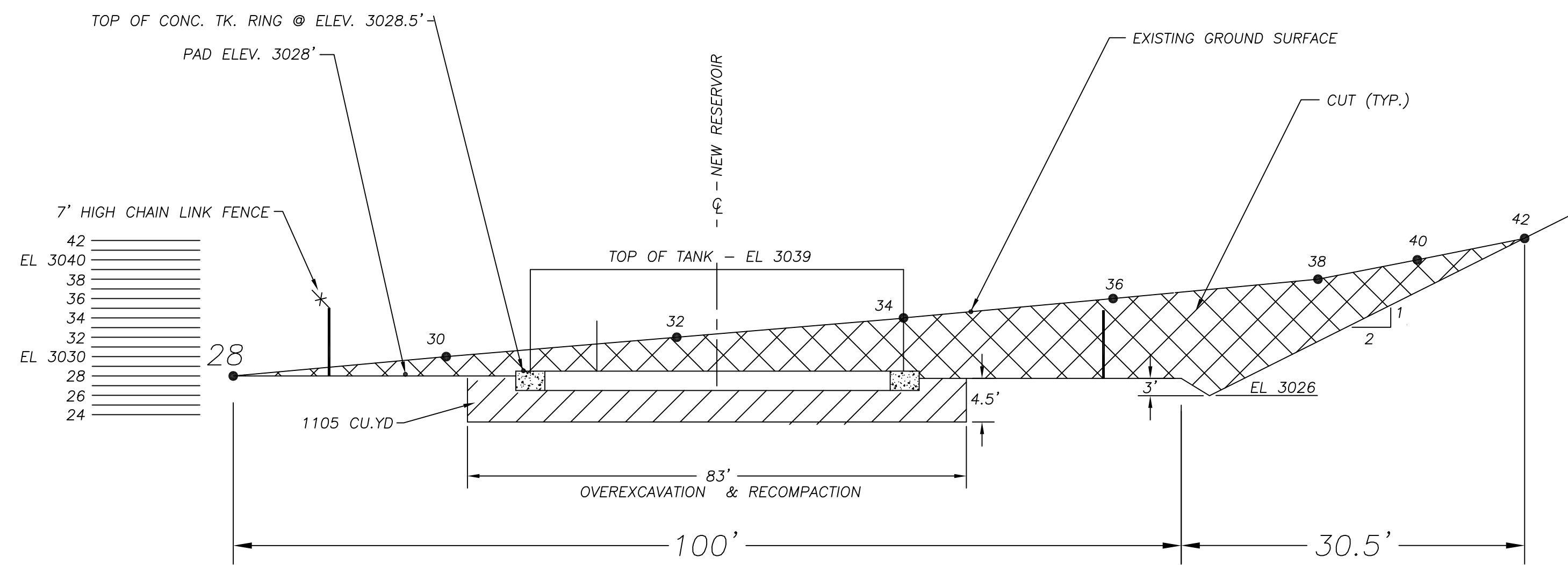
COUNTY SERVICE AREA 70, ZONE F  
 RESERVOIR 2 SITE PLAN

COUNTY OF SAN BERNARDINO  
 OFFICE OF SPECIAL DISTRICTS  
 DEVELOPMENT SERVICES DIVISION  
 157 W. FIFTH STREET 2nd. FLOOR  
 SAN BERNARDINO, CA. 92415-0450  
 (909)387-5967

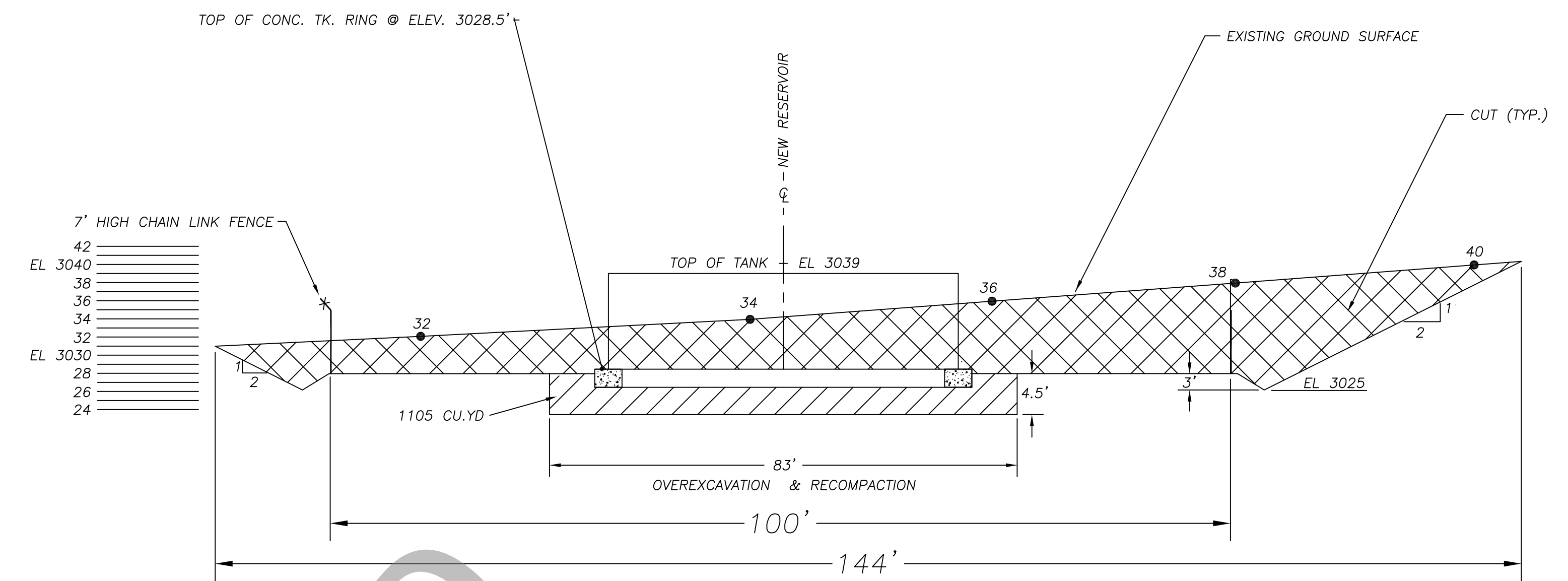
DRAWN BY:	G. MARTIN
DATE:	8/97
PROJECT NO.:	940018
SHEET NO.:	14

14  
 OF

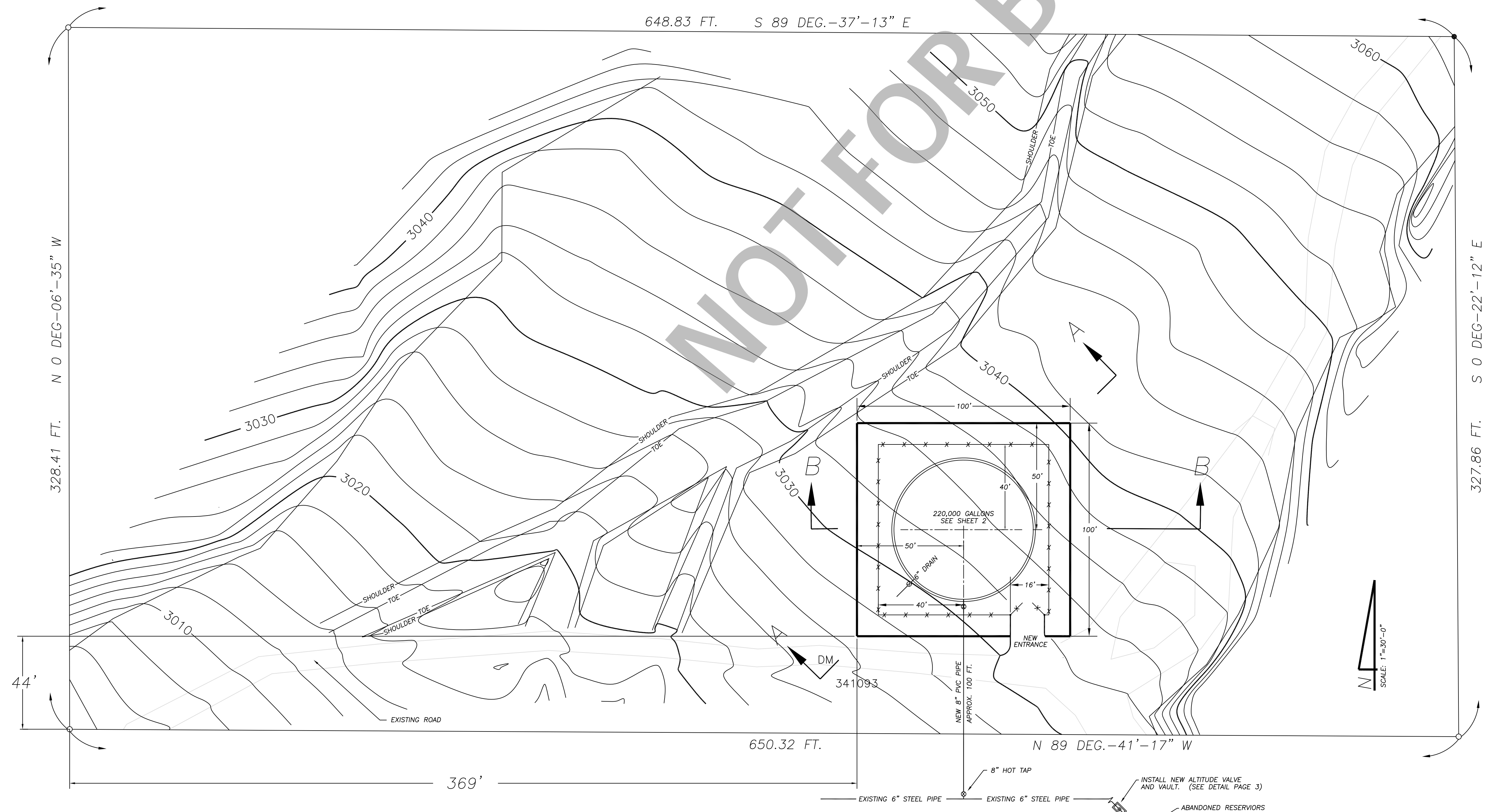




SECTION A  
SCALE: 1"=15'



SECTION B  
SCALE: 1"=15'



NOT FOR BID

NO.	REVISION

COUNTY SERVICE AREA 70, IMPROVEMENT ZONE F  
RESERVOIR 2 - APN 580-241-16  
SPECIAL PURPOSE EARTHQUAKE GRANT

COUNTY OF SAN BERNARDINO  
OFFICE OF SPECIAL DISTRICTS  
DEVELOPMENT SERVICES DIVISION  
157 WEST FIFTH STREET 2nd FLOOR  
SAN BERNARDINO, CA 92415-0450  
(714)387-5967

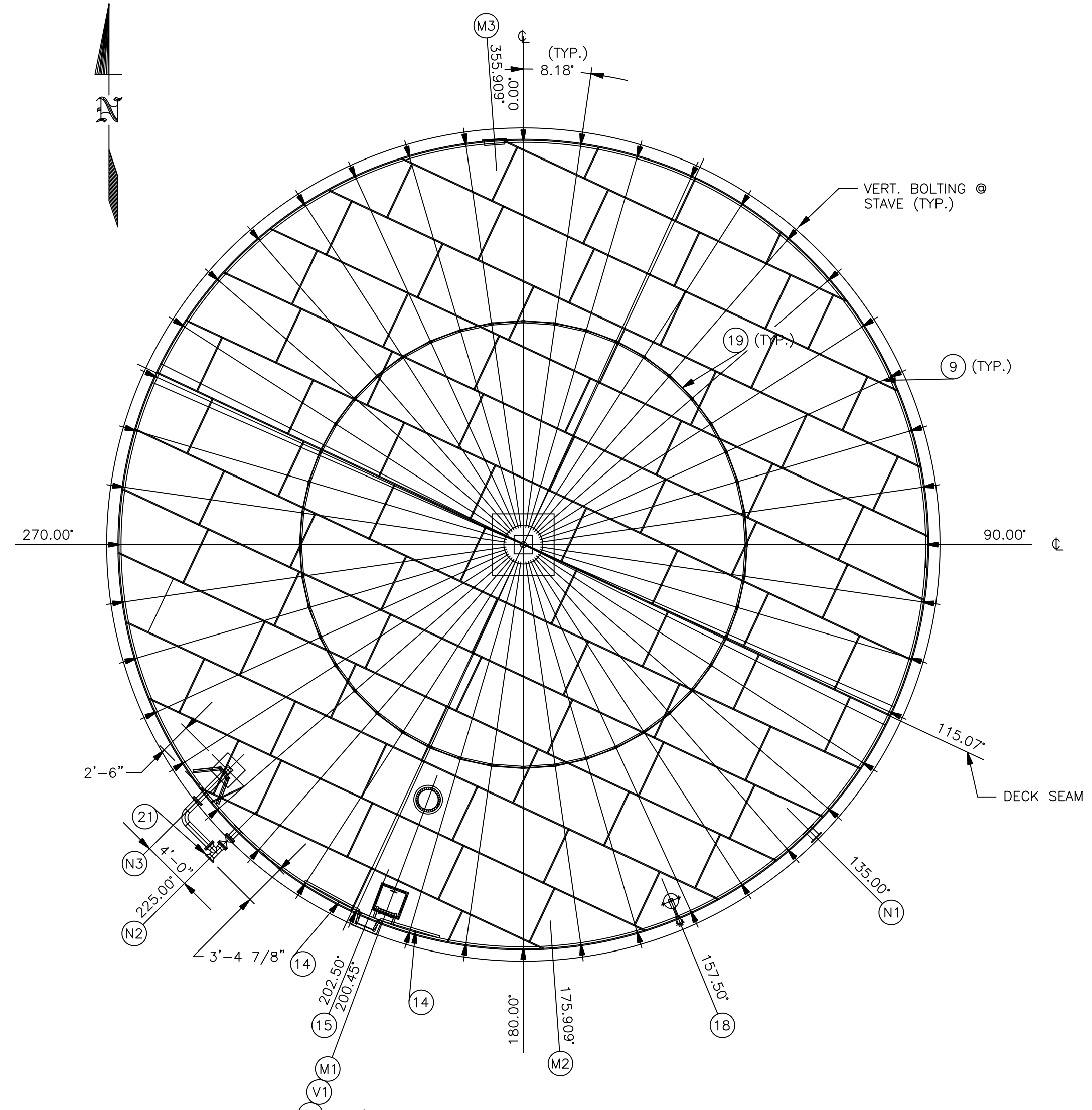
DRAWN BY: G.MARTIN  
DATE: 1/95  
PROJECT NO.: 940018

SHEET NO.  
2 OF 4

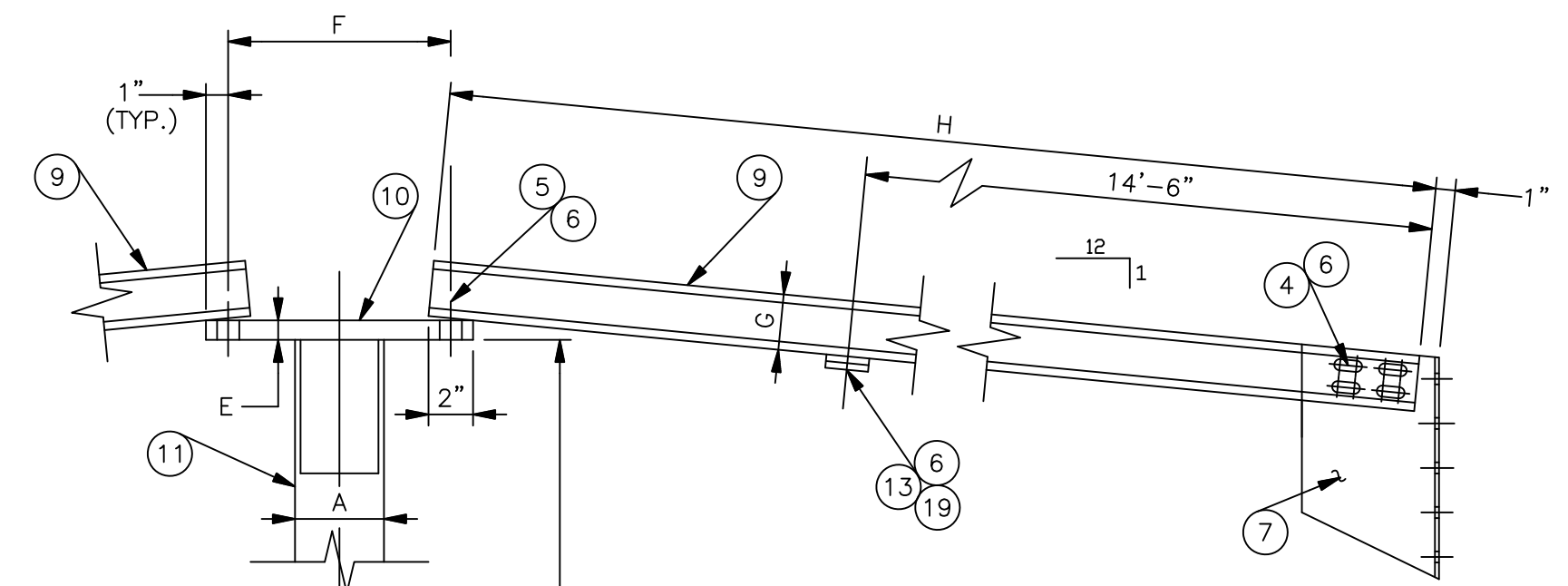
NO.	REVISION

COUNTY SERVICE AREA 70, ZONE F  
RESERVOIR 2 TANK DETAILS

COUNTY OF SAN BERNARDINO  
OFFICE OF SPECIAL DISTRICTS  
DEVELOPMENT SERVICES DIVISION  
157 W. FIFTH STREET 2nd FLOOR  
SAN BERNARDINO CA 92415-0450  
(909)387-5967

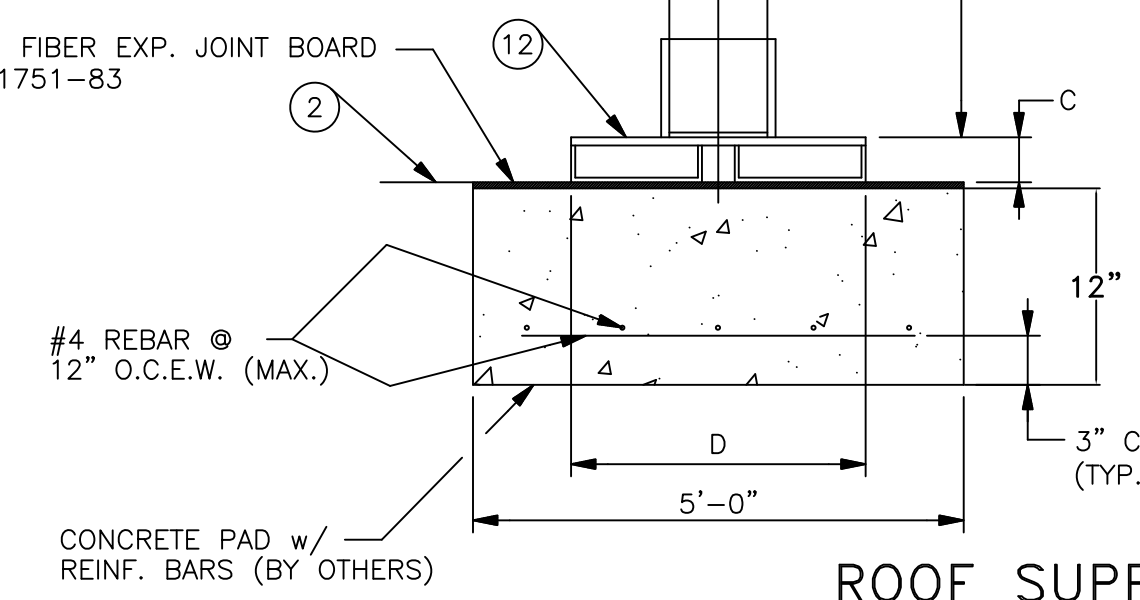


PLAN ORIENTATION  
SCALE 1/8" = 1'-0"

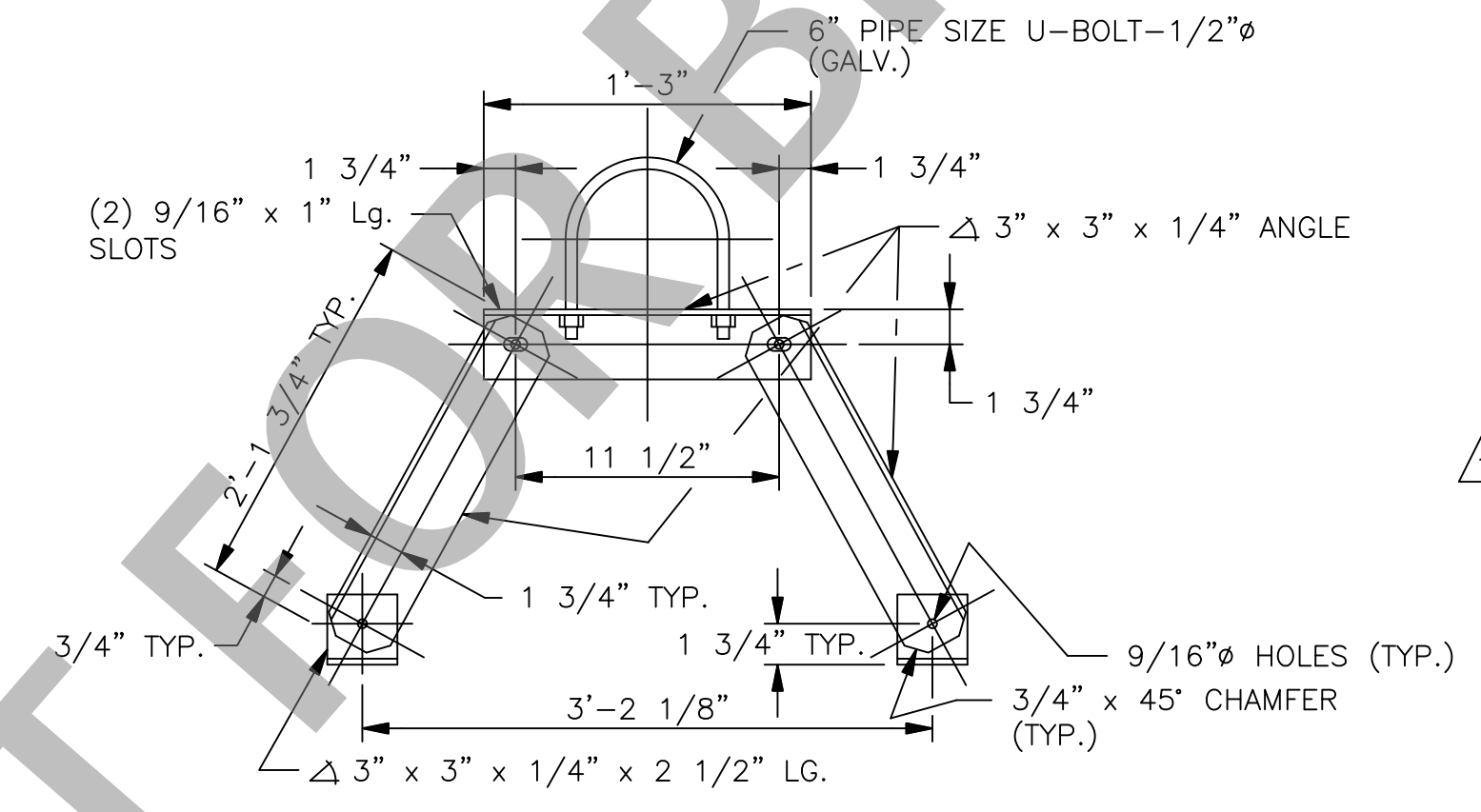


A	B	C	D
POLE1 PIPE	POLE2	BASE1 L	BASE2
E	F	G	H
HAT1 L	HAT2	RAFTER1	RAFTER2

1/2" Thk. FIBER EXP. JOINT BOARD  
ASTM D-1751-83



ROOF SUPPORT STRUCTURE



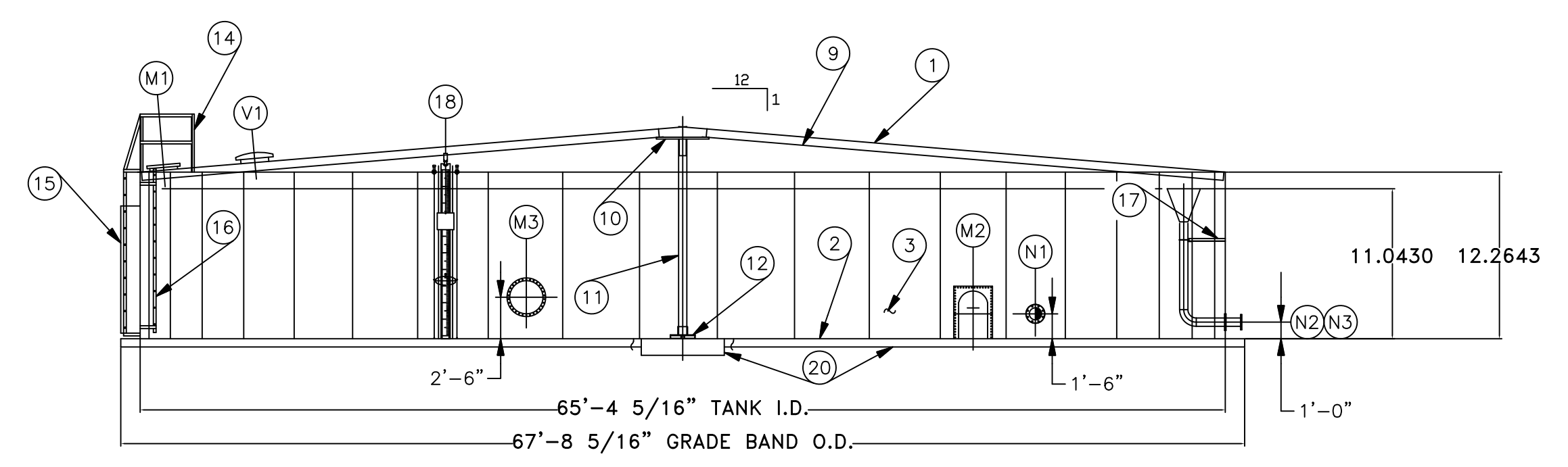
17 6"Ø PIPE SUPPORT (GALV.)

BILL OF MATERIALS

ITEM	QTY.	SERVICE	DESCRIPTION
1	LOT	DECK	12 Ga. SQUARES & CANTS ASTM A570 Gr. 40
2	LOT	BOTTOM	12 Ga. SQUARES & CANTS ASTM A570 Gr. 40
3	44	SHELL	3/16" Thk. STAVES S.R. BOLTING ASTM A-36
4	176	BOLT	1/2"Ø x 1 1/4" Lg. HEX. HD. BOLT GR. 5 (GALV.)
5	44	BOLT	1/2"Ø x 2 3/4" Lg. HEX. HD. BOLT GR. 5 (GALV.)
6	264	NUT	1/2" HEX. NUT (GALV.)
7	34	RAFTER GUSSET	3/16" Thk. RAFTER GUSSET
9	44	RAFTER	C6" x 8.2# x 31'-2" Lg. RAFTER
10	1	RAFTER HAT	1 7/16" Ø x 40" O.D. w/ (44)-9/16"Ø HOLES EQ. SPACED ON 38"Ø B.C. w/ 5"Ø STD. WT. PIPE SLEEVE WELDED @ BOTTOM
11	1	CENTER COLUMN	6"Ø STD. WT. PIPE x 11'-9 5/16" Lg.
12	1	COLUMN BASE	1/2" Ø x 18" SQ. w/ (2)-C8" x 11.5# x 18" Lg. WELDED @ BOTTOM & 7"Ø STD. WT. PIPE SLEEVE WELDED @ TOP
13	44	BOLT	1/2"Ø x 1 1/2" Lg. HEX. HD. BOLT GR. 5 (GALV.)
14	2	HAND RAIL	3'-6" High x 5'-0" Lg. HANDRAIL (GALV.)
15	1	EXTERIOR LADDER	16" Wide x 10'-0 1/2" High EXTERIOR LADDER (GALV.) w/ (GALV. LOCKABLE ANTI-CRIMP DOOR 8'-0" High SEE DWG. A-547)
16	1	INTERIOR LADDER	16" Wide x 10'-0" High INTERIOR LADDER (GALV.)
17	1	SUPPORT	SUPPORT BRACKET FOR 6"Ø PIPE w/ "U"-BOLT & CLIPS (GALV.) (SEE DETAIL)
18	1	L.L.I.	FULL TRAVEL LIQUID LEVEL INDICATOR w/ DUAL CABLE CONSTRUCTION (SEE DWG. A-638)
19	44	TIE BAR	1/4" x 2" F.B. x 34" Lg. TIE BAR
20	LOT	FOUND.	CONCRETE PAD, GRAVEL & GRADE BAND (BY OTHERS)
21	1	O-FLOW & DRAIN	6"Ø STD. WT. PIPING (GALV.) w/ FLG'D GATE VALVE BY "MUELLER" #A2360-6 (SEE PLAN & ELEV.)
M1	1	ROOF HATCH	24" Sq. HINGED ROOF HATCH (HINGED)
M2	1	CLEANOUT	24" x 36" FLUSH TYPE DOGHOUSE (2) TWO PIECE CONSTRUCTION
M3	1	W.O.W.	20"Ø SHELL MANWAY
N1	1	INLET/OUTLET	8"-150# F.F. AWWA C207 CLASS "D" RING FLG SHELL NOZZLE w/ 12" PROJ.
N2	1	DRAIN	6"-150# F.F. AWWA C207 CLASS "D" RING FLG SHELL NOZZLE w/ 12" PROJ.
N3	1	O-FLOW	6"-150# F.F. AWWA C207 CLASS "D" RING FLG. SHELL NOZZLE w/ 12" EXT. PROJ. & INT. PIPE, L.R. ELBOW & 1/4" x 7" Sq. x 24" Sq. x 24" High WEIR (SEE ELEV & PLAN)
V1	1	VENT	STANDARD 20" Ø ROOF VENT

**GENERAL NOTES:**

- TANKS TO BE FABRICATED IN ACCORDANCE WITH LATEST EDITION OF AWWA D103-87 & TO BE HOT DIP GALV. PER ASTM A123 & ASTM A153.
- ALL BOLTS & NUTS TO BE HOT DIP GALV.- BOLTS TO BE GR. 5.
- TANK BOTTOM TO BE VACUUM TESTED PRIOR TO WATER TEST.
- ALL NOZZLES (N1, N2 & N3) TO HAVE 1/4" Thk. PLATE FLANGE FOR BOLTING TO SHELL.



ELEVATION  
SCALE 1/8" = 1'-0"

JOB#

**SUPERIOR TANK COMPANY INC.**  
SUPERIOR TANK CO. INC.  
12450 LOS NIETOS RD. (562) 946-8804  
SANTA FE SPRINGS, CA 90670

SCALE: \_\_\_\_\_ APPROVED BY: \_\_\_\_\_ DRAWN BY: NAME \_\_\_\_\_  
DATE: \_\_\_\_\_ CHECKED: \_\_\_\_\_

TITLE: 65'-4 5/16" Dia. x 10'-0 1/2" High BOLTED STEEL TANK A.W.W.A. D103-87 (GALVANIZED)

CUSTOMER: COUNTY OF SAN BERNARDINO DRAWING #: DWG#

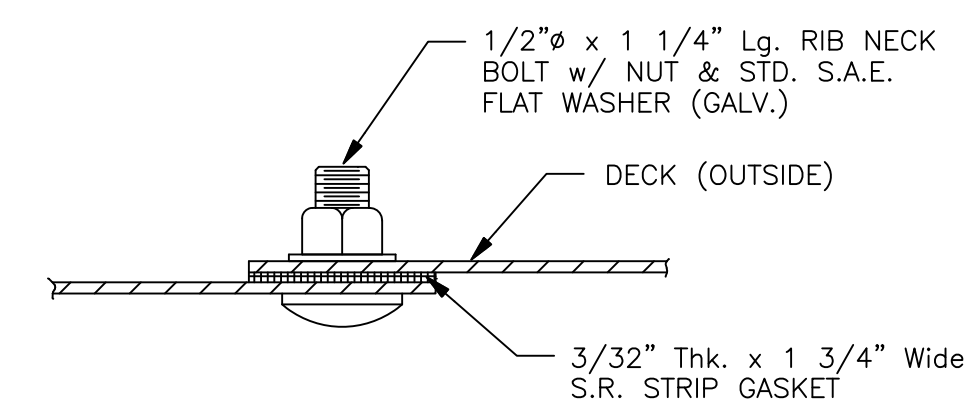
DATE	BY	REVISION	SYM

DRAWN BY: G. MARTIN  
DATE: 8/97  
PROJECT NO: 940018  
SHEET NO: 34 OF

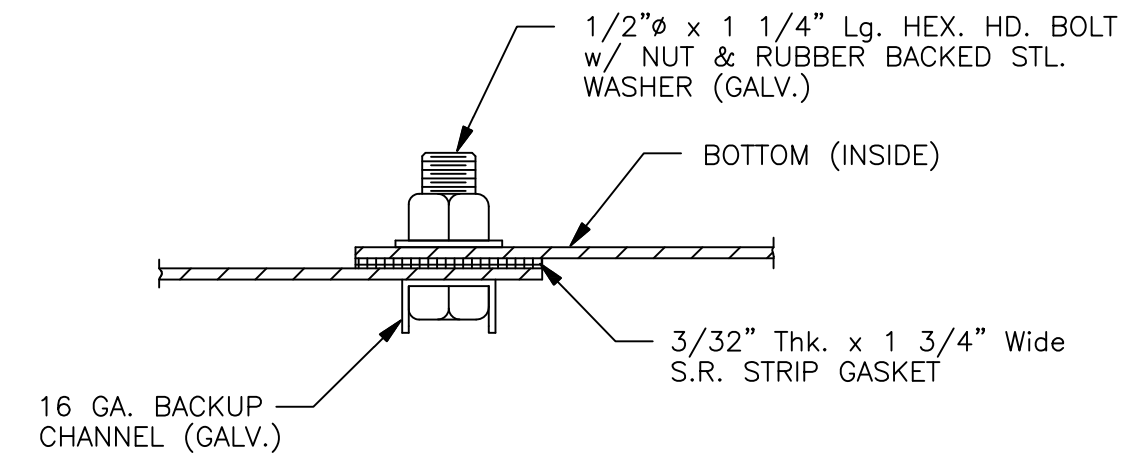
NO.	REVISION

COUNTY SERVICE AREA 70, ZONE F  
RESERVOIR 2 TANK DETAILS

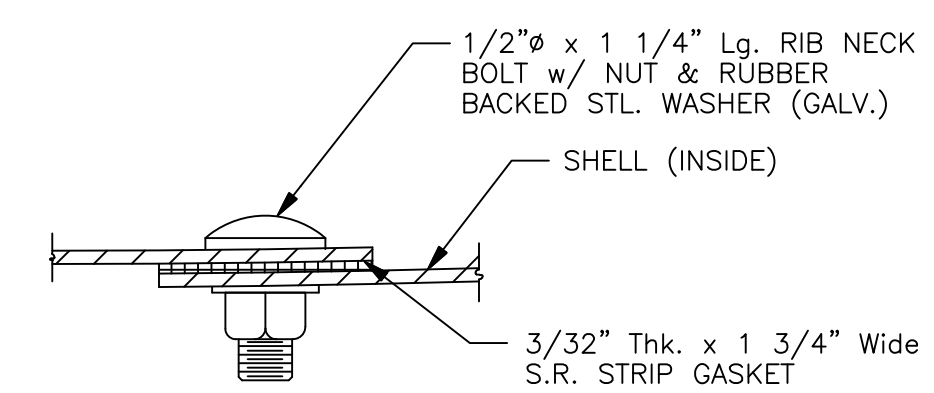
COUNTY OF SAN BERNARDINO  
OFFICE OF SPECIAL DISTRICTS  
DEVELOPMENT SERVICES DIVISION  
157 W. FIFTH STREET 2nd FLOOR  
SAN BERNARDINO, CA 92415-0450  
(909)387-5967



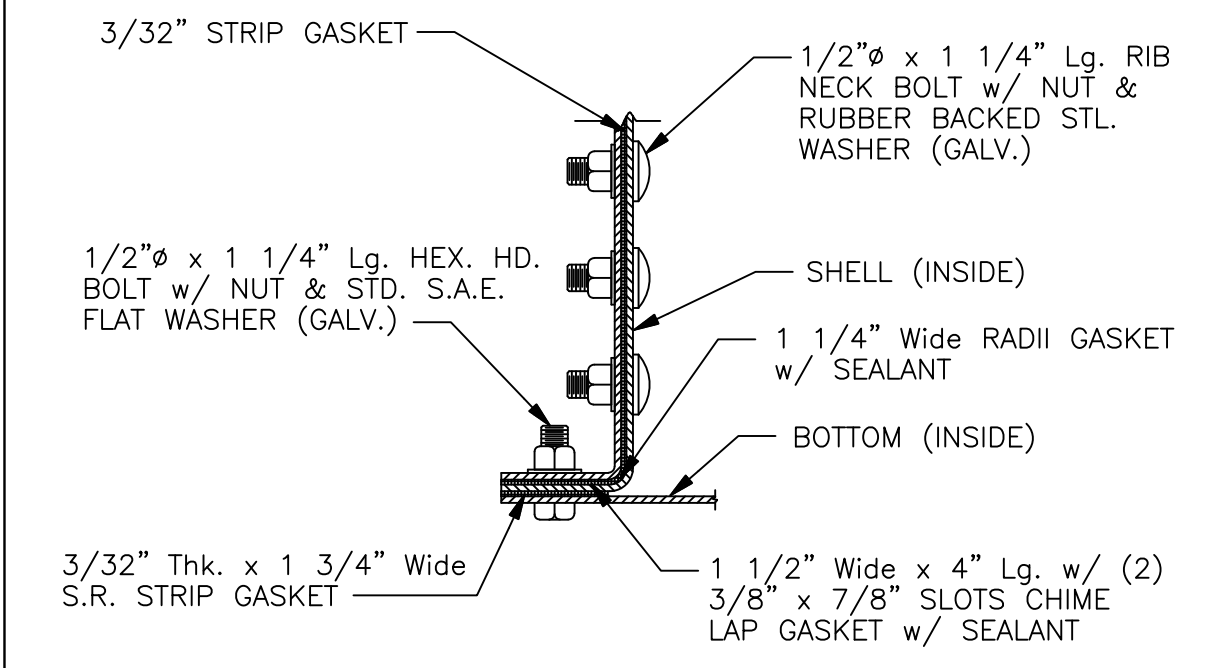
SECTION ##  
DECK SEAM LAP



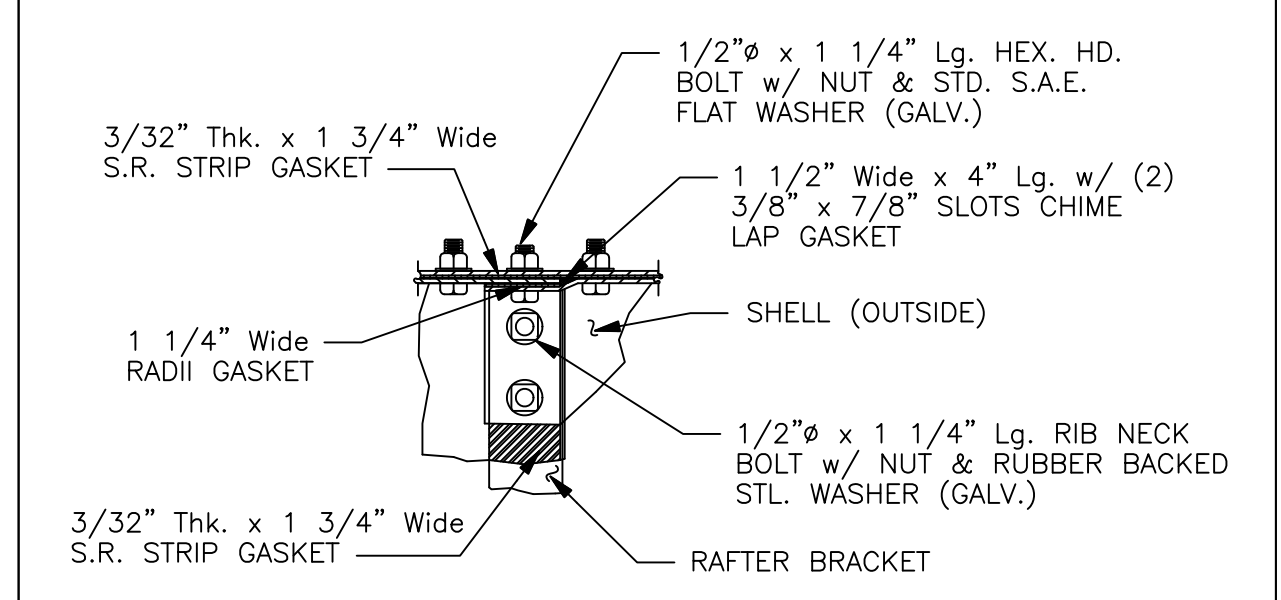
SECTION ##  
BOTTOM SEAM LAP



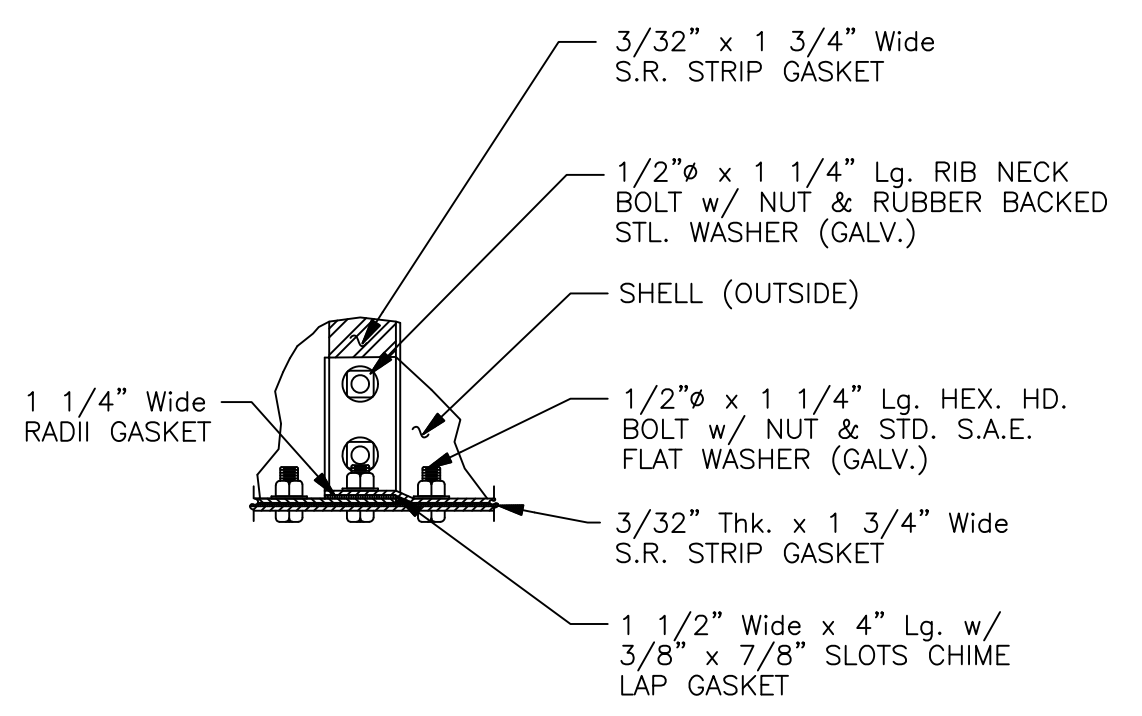
SECTION ##  
S.R. VERT. SEAM LAP



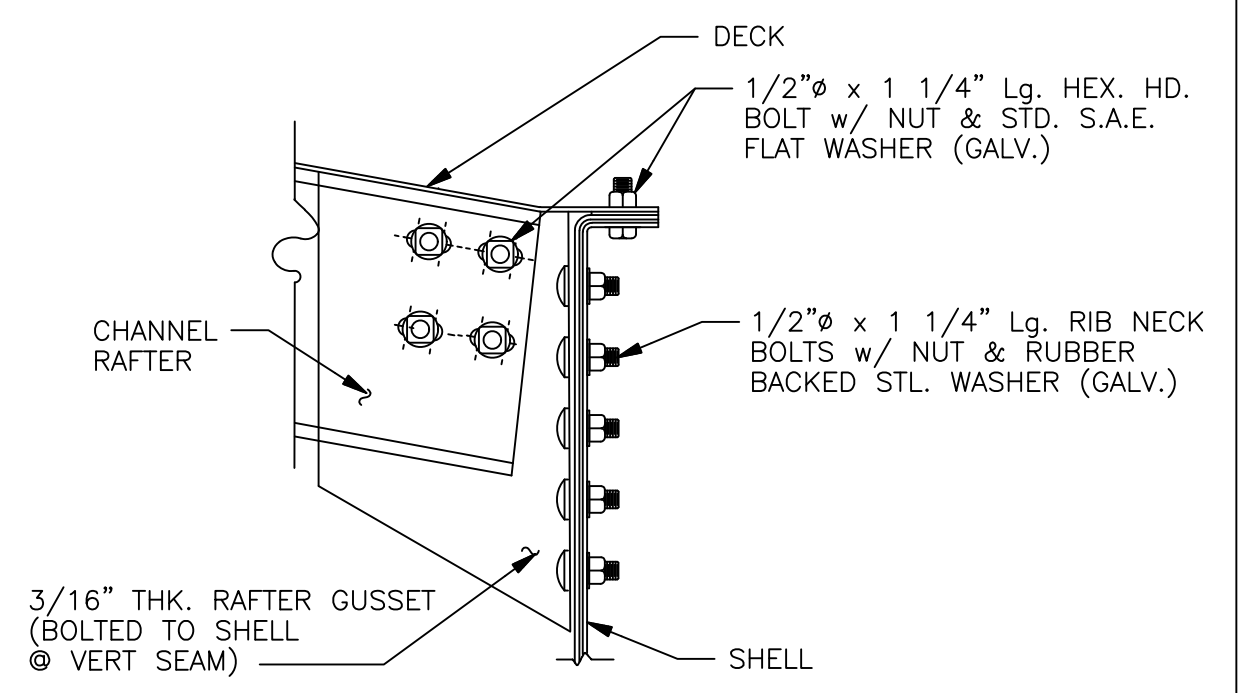
SECTION ##  
CHIME BOLTING @ BOTTOM



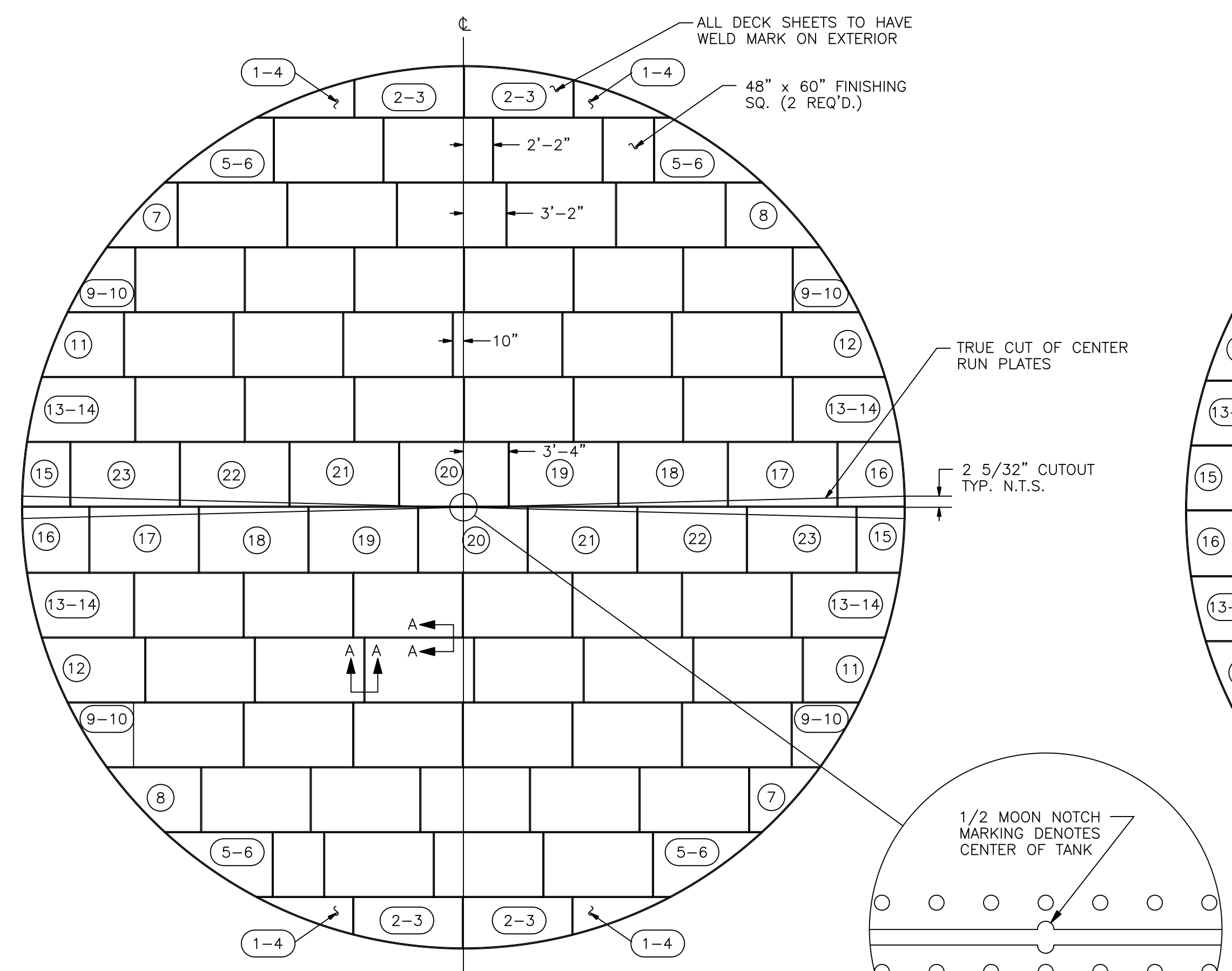
VIEW #  
S.R. STAVE LAP @ DECK



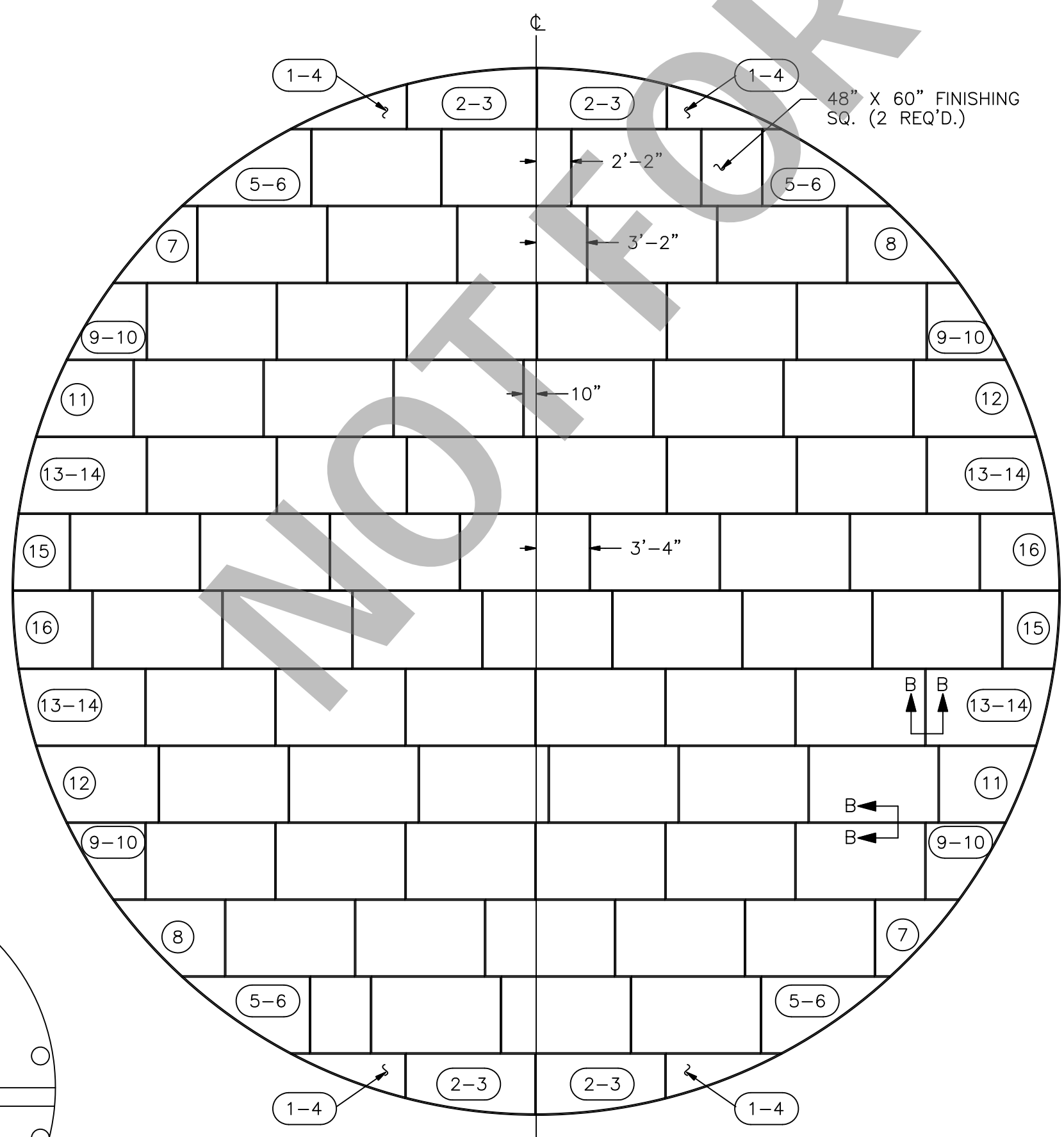
VIEW #  
S.R. STAVE LAP



RAFTER GUSSET CONNECTION

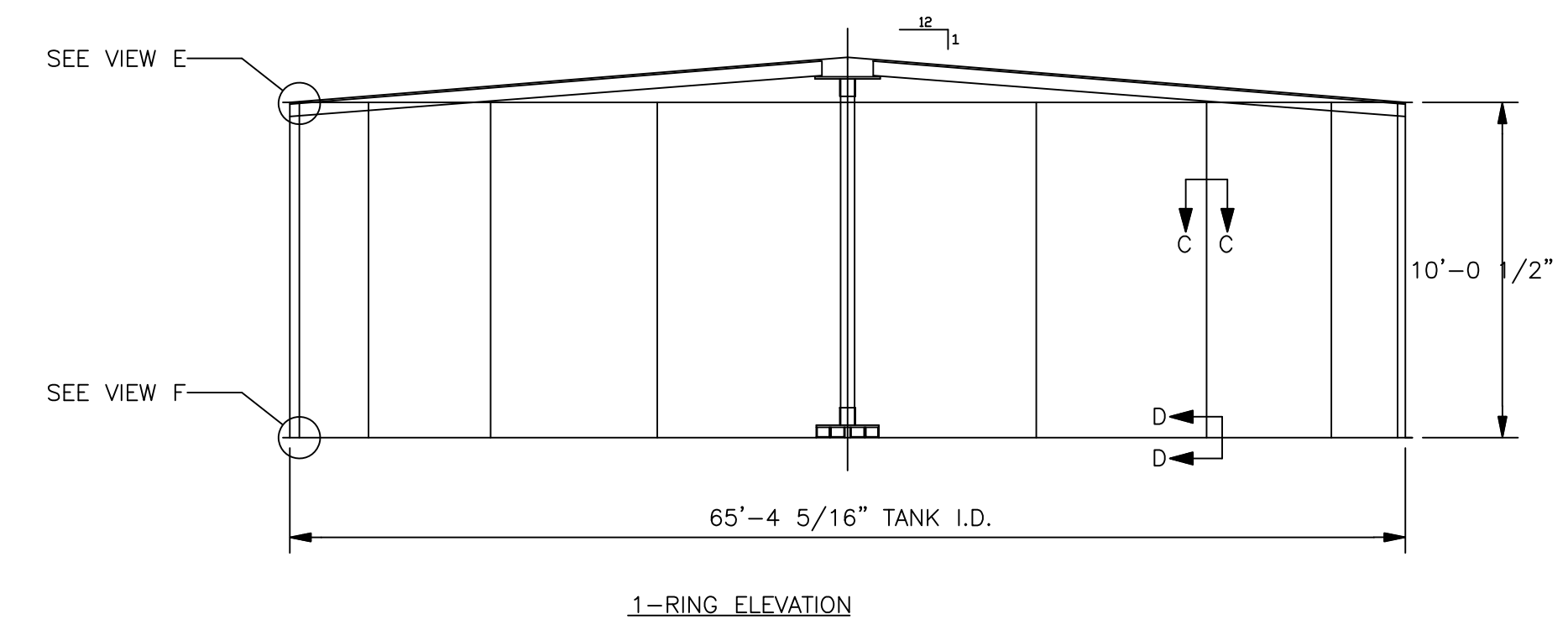


DECK PLAN  
SCALE\_OF\_DECK



BOTTOM PLAN  
SCALE\_OF\_BOTTOM

- NOTES:
- 1.) ALL STRIP, RADII, & CHIME LAP GASKETS TO BE E.P.D.M. RUBBER MATERIAL (F.D.A. APPROVED).
  - 2.) HEX NUTS & BOLTS OF THE SAME GRADE MAY BE USED IN LIEU OF SQ. NUTS & BOLTS AT THE MANUFACTURERS DISCRETION.
  - 3.) ALL TANK BOLTS SPACING TO BE @ 2" c/c.



1-RING ELEVATION

JOB#

<b>SUPERIOR TANK COMPANY INC.</b>		SUPERIOR TANK CO. INC. 12450 LOS METOS RD. (310)946-8804 SANTA FE SPRINGS, CA 90707	
SCALE: SCALE	APPROVED BY:	DRAWN BY: NAME	
DATE: DATE		CHECKED:	
TITLE: CONN. DET'S FOR 65'-4 5/16" x 10'-0 1/2" H. BOLTED STEEL TANK A.W.W.A. D103-87 (GALVANIZED)			
CUSTOMER: COUNTY OF SAN BERNARDINO		DRAWING #: DWG#	

DATE	BY	DESCRIPTION	SYM
REVISIONS			

DRAWN BY: G. MARTIN
DATE: 8/97
PROJECT NO: 940018
SHEET NO: 4 OF 4