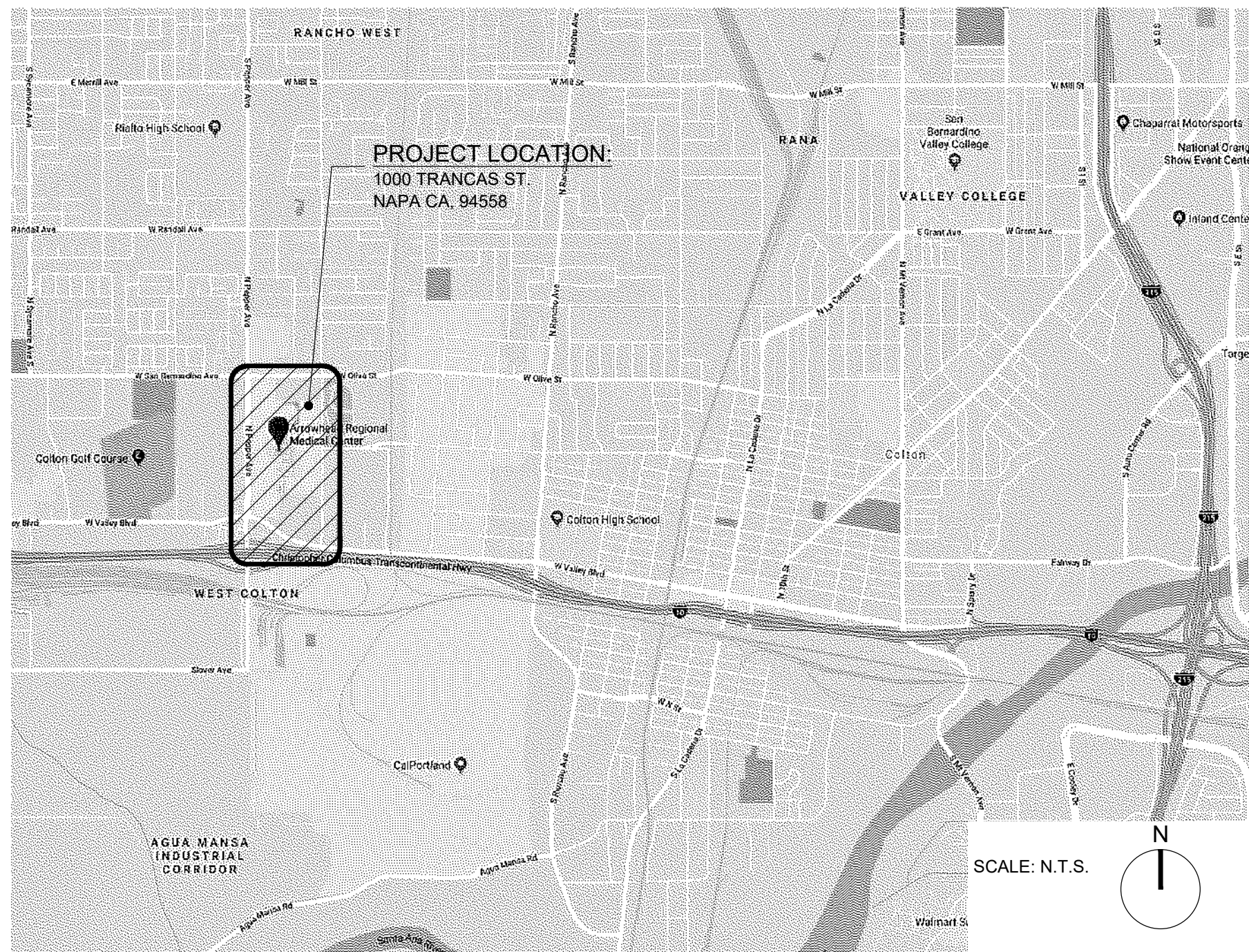


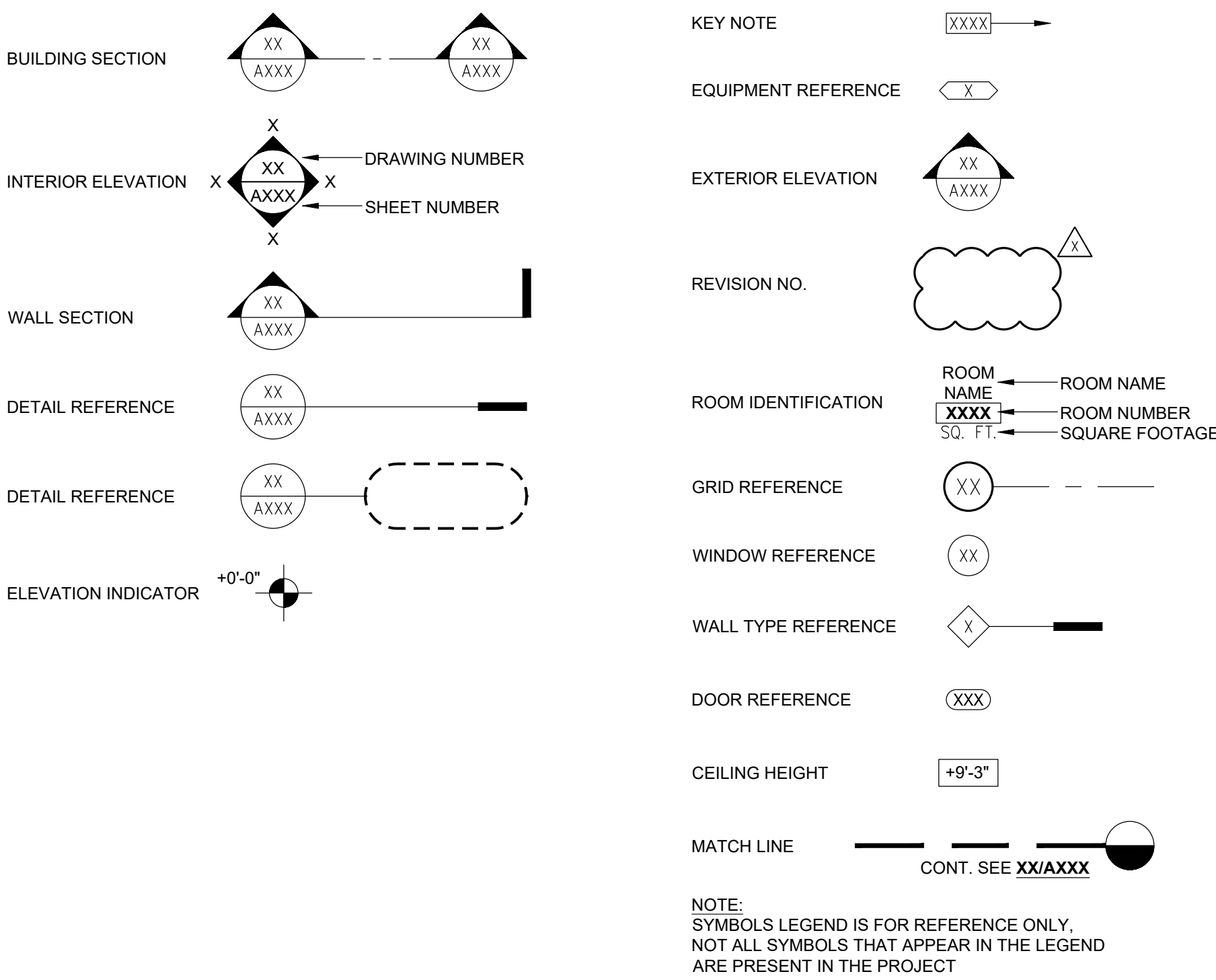
ARROWHEAD REGIONAL MEDICAL CENTER

CHAIN LINK FENCE ENCLOSURE

VICINITY MAP



SYMBOLS



ABBREVIATIONS

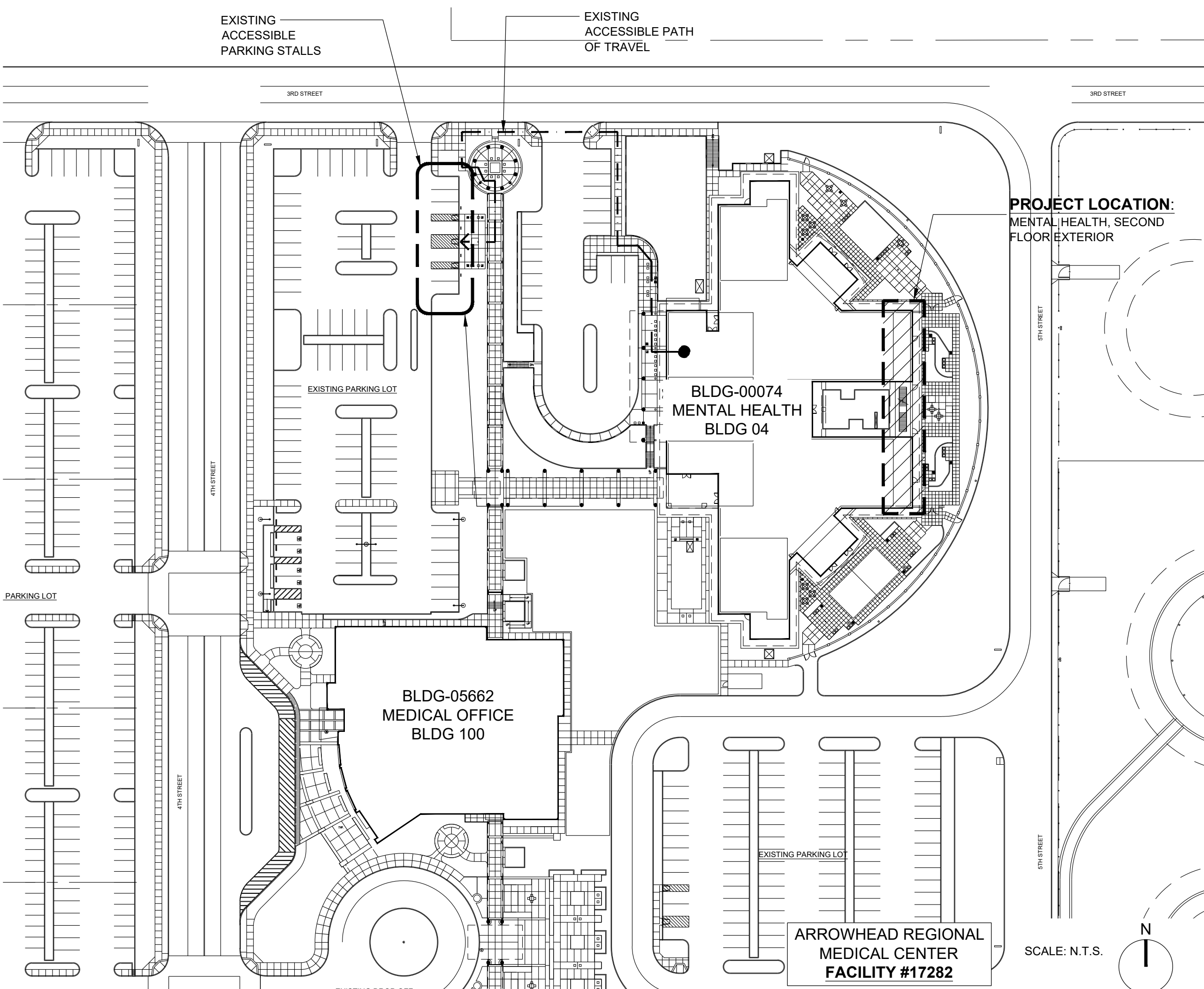
A.B.	ANCHOR BOLT	FT.	FOOT, FEET	REV.	REVISION
A.C.	ASPHALT CONCRETE	FURN.	FURNITURE	R.M.	ROOM
ADJ.	ADJUSTABLE	FXTR.	FIXTURE	R.O.	ROUGH OPENING
A.F.F.	ABOVE FINISH FLOOR	GA.	GAUGE	S.C.	SOLID CORE
A.F.G.	ABOVE FINISH GRADE	GALV.	GALVANIZED	SCHED.	SCHEDULE
A.F.S.	ABOVE FINISH SLAB	G.C.	GENERAL CONTRACTOR	S.J.	SEISMIC JOINT
A.H.J.	AUTHORITY HAVING JURISDICTION	GYP. BD.	GYP. BOARD	SHR.	SHOWER
ALT.	ALTERNATE	H.C.	HOLLOW CORE	SHT.	SHEET
APPROX.	APPROXIMATELY	H.M.	HOLLOW METAL	SHR.	SHEET
BD.	BOARD	HORIZ.	HORIZONTAL	S.M.S.	SHEET METAL SCREW
BLDG.	BUILDING	HR.	HOUR	SQ.	SQUARE
BLKG.	BLOCKING	INFO.	INFORMATION	S.S.	STAINLESS STEEL
BM.	BEAM	INSUL.	INSULATION	ST.	STREET
BSMT.	BASEMENT	JAN.	JANITOR	STOR.	STORAGE
CAB.	CABINET	LAV.	LAVATORY	SUSP.	SUSPENDED CEILING
C.B.C.	CALIFORNIA BUILDING CODE	LB.	POUND(S)	T&B.	TOP AND BOTTOM
C.C.T.V.	CLOSED CIRCUIT TELEVISION	LT. - WT.	LIGHT WEIGHT	T&G.	TONGUE AND GROVE
C.G.	CORNER GUARD	MAX.	MAXIMUM	T.C.	TOP OF CONCRETE
C.L.	CENTER LINE	MECH.	MECHANICAL	TEL.	TELEPHONE
CLR.	CLEAR	MIN.	MINIMUM	TEMP.	TEMPORARY
CLNG.	CEILING	(N)	NEW	THK.	THICK
C.J.	CONTROL JOINT	NA	NOT APPLICABLE	TOT.	TOTAL
COL.	COLUMN	N.I.C.	NOT IN CONTRACT	T.O.P.	TOP OF PARAPET
CONC.	CONCRETE	NO.	NUMBER	T.O.PL.	TOP OF PLATE
CONT.	CONTINUOUS	N.T.S.	NOT TO SCALE	T.O.R.	TOP OF ROOF
CSWK.	CASEWORK	O.C.	ON CENTER	U.C.	UNDER COUNTER
DIA. (Ø)	DIAMETER	OXY.	OXYGEN	UN.O.	UNLESS NOTED OTHERWISE
DBL.	DOUBLE	P.C.	PORTLAND CEMENT	UTIL.	UTILITY
DEMO.	DEMOLITION	P.D.F.	POWER DRIVEN FASTENER	VERT.	VERTICAL
D.F.	DRINKING FOUNTAIN	P.L.	PROPERTY LINE OR PLATE	VEST.	VESTIBULE
DIAG.	DIAGONAL	P.L.F.	PLASTIC LAMINATE	V.I.F.	VERTICAL IN FIELD
DIST.	DISTANCE	PLYWD.	PLYWOOD	VOL.	VOLUME
DN.	DOWN	PNL. BD.	PANEL BOARD	W/	WITH
DWG.	DRAWING	PRKG.	PARKING	W/O.	WITHOUT
(E)	EXISTING	P.S.F.	POUNDS PER SQUARE FOOT	W.C.	WATER CLOSET
EA.	EACH	P.S.I.	POUNDS PER SQUARE INCH	WD.	WOOD
ELEV.	ELEVATION	P.V.C.	POLYVINYL CHLORIDE	WT.	WEIGHT
ELEC.	ELECTRICAL	P.W.T.	PAVEMENT		
F.A.	FIRE ALARM	QTY.	QUANTITY		
F.D.	FLOOR DRAIN	RAD.	RADIUS		
F.E.C.	FIRE EXTINGUISHER CABINET	R.C.P.	REFLECTED CEILING PLAN		
F.F.	FINISH FLOOR	R.D.	ROOF DRAIN		
FIN.	FINISH	REF.	REFERENCE		
FLR.	FLOOR	REFR.	REFRIGERATOR		
F.O.C.	FACE OF CONCRETE	REINP.	REINFORCE (D) (ING) (MENT)		
F.O.F.	FACE OF FINISH	REQD.	REQUIRED		
F.O.S.	FACE OF STEEL				

GENERAL NOTES

- SCOPE OF DOCUMENTS: THESE DRAWINGS INDICATE THE GENERAL SCOPE OF THE DESIGN CONCEPT, THE DIMENSIONS OF THE BUILDING, THE MAJOR ARCHITECTURAL ELEMENTS AND THE TYPE OF STRUCTURAL, MECHANICAL AND ELECTRICAL SYSTEMS. ON THE BASIS OF THE GENERAL SCOPE INDICATED OR DESCRIBED, FURNISH ALL ITEMS REQUIRED FOR THE EXECUTION AND COMPLETION OF THE WORK.
- THE CONTRACTOR SHALL KEEP AN UP TO DATE SET OF CONTRACT DOCUMENTS PERMIT SET, INCLUDING AMENDED DOCUMENTS, AT THE JOB SITE IN A LOCATION CONVENIENT FOR REFERENCE.
- CONTRACTOR SHALL COORDINATE ALL NECESSARY UTILITY RELOCATIONS WITH THE APPROPRIATE UTILITY COMPANIES.
- ALL CONSTRUCTION AND MATERIALS SHALL COMPLY WITH THE REQUIREMENTS OF THE CALIFORNIA BUILDING CODES (CBC) AND LOCAL GOVERNING CODES AND AUTHORITIES.
- VERIFY ALL DIMENSIONS AND SITE CONDITIONS BEFORE STARTING WORK. SHOULD A DISCREPANCY APPEAR IN THE SPECIFICATIONS OR DRAWINGS, OR IN THE WORK DONE BY OTHERS FROM THE CONTRACT DOCUMENTS THAT AFFECT ANY WORK, NOTIFY THE ARCHITECT AT ONCE FOR INSTRUCTION ON HOW TO PROCEED. IF THE CONTRACTOR PROCEEDS WITH THE WORK AFFECTED WITHOUT INSTRUCTIONS FROM THE ARCHITECT CONTRACTOR SHALL MAKE GOOD ANY RESULTING DAMAGE OR DEFECT.
- CONFINE ALL OPERATIONS ON THE SITE TO AREAS PERMITTED BY THE OWNER, PERFORM THE WORK IN ACCORDANCE WITH ALL APPLICABLE LAWS, LOCAL ORDINANCES, PERMITS AND THE CONTRACT DOCUMENTS. MAINTAIN THE JOB SITE IN A CLEAN, ORDERLY CONDITION FREE OF DEBRIS AND LITTER. THE JOB SITE SHALL NOT BE UNREASONABLY ENCUMBERED WITH ANY MATERIAL OR EQUIPMENT. EACH SUBCONTRACTOR IMMEDIATELY UPON COMPLETION OF EACH PHASE OF HIS WORK SHALL REMOVE ALL TRASH AND DEBRIS AS A RESULT OF HIS OPERATION.
- STACK AND PROTECT ALL MATERIAL STORED ON THE SITE TO PREVENT DAMAGE AND DETERIORATION UNTIL USE. FAILURE TO PROTECT MATERIALS MAY BE CAUSE FOR REJECTION OF WORK.
- PERFORM ALL CUTTING, FITTING OR PATCHING THAT MAY BE REQUIRED TO MAKE SEVERAL PARTS FIT TOGETHER PROPERLY SO AS NOT TO ENDANGER ANY OTHER WORK BY CUTTING, EXCAVATING OR OTHERWISE ALTERING THE TOTAL WORK OR ANY PART OF IT. PERFORM ALL PATCHING, REPAIRING AND REPLACING OF MATERIALS AND SURFACES; CUT OR DAMAGED IN EXECUTION OF WORK WITH APPLICABLE MATERIAL SO THAT SURFACES REPLACED WILL, UPON COMPLETION, MATCH SURROUNDING SIMILAR SURFACES.
- DO NOT COMMENCE ANY PORTION OF THE WORK REQUIRING A SHOP DRAWING OR SAMPLE SUBMISSION UNTIL THE SUBMISSION HAS BEEN REVIEWED AND ACCEPTED BY THE ARCHITECT. ALL SUCH PORTIONS OF THE WORK SHALL BE IN ACCORDANCE WITH ACCEPTED SHOP DRAWINGS AND SAMPLES.
- DIMENSIONS:
 - FOR ALL PROPOSED CONSTRUCTION, USE NOTED DIMENSIONS ONLY. **DO NOT SCALE DRAWINGS**
 - ALL DIMENSIONS ARE TO FACE OF STUD (F.O.S.) UNLESS NOTED OTHERWISE.
 - CEILING HEIGHT DIMENSIONS ARE FROM FLOOR SLAB TO FINISH FACE OF CEILING.
- PROVIDE ALL NECESSARY BLOCKING, BACKING, AND FRAMING FOR EQUIPMENT AND ALL OTHER ITEMS REQUIRING THE SAME.
- COMPLY WITH FIRE RESISTIVE REQUIREMENTS THROUGHOUT THE ENTIRE BUILDING PER CBC.
- MAINTAIN FIRE RATED CONSTRUCTION AT ALL CABINETS, ACCESSORIES, PANELS AND SIMILAR FABRICATIONS OR ASSEMBLIES RECESSED RATED PARTITIONS.
- INITIATE, MAINTAIN AND SUPERVISE A REASONABLE AND PRUDENT SAFETY PROGRAM INCLUDING, BUT NOT LIMITED TO, THE ISOLATION OF WORK AREAS AND THE PROMPT REMOVAL OF ANY DEBRIS OR TOOLS WHICH MIGHT ENDANGER VISITORS, PATIENTS OR EMPLOYEES OF THE HOSPITAL. ALL ROADS AND WALKWAYS SHALL REMAIN CLEAR AND UNOBSTRUCTED.
- WHEN INSTALLING DRILLED IN ANCHORS AND/OR POWDER DRIVEN PINS IN EXISTING NON-PRESTRESSED REINFORCED CONCRETE, USE CARE AND CAUTION TO AVOID CUTTING OR DAMAGING THE EXISTING REINFORCING BARS. WHEN INSTALLING THEM INTO EXISTING PRE-STRESSED CONCRETE (PRE OR POST-TENSIONED) LOCATE THE PRESTRESSED TENDONS BY USING A NON-DESTRUCTIVE METHOD PRIOR TO INSTALLATION. EXERCISE EXTREME CARE AND CAUTION TO AVOID CUTTING OR DAMAGING THE TENDONS DURING INSTALLATION. MAINTAIN A MINIMUM CLEARANCE OF ONE INCH BETWEEN THE REINFORCEMENT AND THE DRILLED IN ANCHOR AND/OR PIN. **REFERENCE: 2016 CBC SECTION 1603A.1.10.**
- PROVIDE ACCESS PANELS TO ALL TO ALL CONCEALED SPACES (I.E. ATTICS, VOID SPACES, ETC.) AS REQUIRED BY THE CURRENT CBC AND LOCAL GOVERNING AUTHORITIES AND AS NEEDED TO SERVICE ANT ITEMS SPECIFIED BY THESE DOCUMENTS.
- NO DEVIATION FROM THE CONTRACT DOCUMENTS SHALL BE MADE WITHOUT WRITTEN APPROVAL FROM THE ARCHITECT.
- CONTRACTOR SHALL COORDINATE WITH ALL EQUIPMENT MANUFACTURERS FOR EQUIPMENT ROUGH-IN REQUIREMENTS.
- NO PRODUCTS CONTAINING ASBESTOS IN ANY FORM SHALL BE USED ON ANY PART OF THIS PROJECT.
- PROVIDE AND MAINTAIN TEMPORARY BARRICADES, CLOSURE WALLS, ETC. AS REQUIRED TO PROTECT THE PUBLIC DURING THE PERIOD OF CONSTRUCTION. CONSTRUCTION BARRICADES TO BE EQUAL TO THE FIRE RATING OF THE WALLS THEY REFLECT.
- ARCHITECT IS NOT RESPONSIBLE FOR THE ACCURACY OF THE INFORMATION CONTAINED IN OWNER SUPPLIED DOCUMENTS. CONTRACTOR TO VERIFY ALL DIMENSIONS IN THE FIELD PRIOR TO PERFORMANCE OF WORK.
- PREPARE ALL FLOORS TO RECEIVE NEW FLOOR FINISHES INDICATED. VOIDS SHALL BE FILLED AND ANY SURFACE IRREGULARITIES LEVELED. ALL FLOOR SURFACES ARE TO BE LEVEL, CLEAN AND IN SMOOTH CONDITION MEETING THE MANUFACTURERS SPECIFICATIONS PRIOR TO THE INSTALLATION OF ANY FLOOR COVERINGS.
- ALL FLOORS SHALL BE OF SLIP RESISTANT FINISH SURFACE. STATIC COEFFICIENT OF FRICTION SHALL BE 0.6 FOR WALKING SURFACES AND 0.8 FOR RAMPS. FLOORING SHALL BE LABELED WITH STATIC COEFFICIENT OF FRICTION.
- UNLESS OTHERWISE INDICATED, CLOSETS, VESTIBULES, COLUMNS, PARTITIONED-OFF PORTIONS, PROJECTIONS OR RECESSES IN SPACES SHALL HAVE FINISHES TO MATCH THE EXISTING CONDITION FOR RESPECTIVE SPACES IN WHICH THEY OCCUR.
- THE MECHANICAL, ELECTRICAL AND PLUMBING DRAWINGS ARE SUPPLEMENTARY TO THE ARCHITECTURAL DRAWINGS. SHOULD THERE BE A DISCREPANCY BETWEEN THE ARCHITECTURAL DRAWINGS AND THE CONSULTING ENGINEERS' DRAWINGS, SUCH A DISCREPANCY IS TO BE BROUGHT TO THE ATTENTION OF THE ARCHITECT PRIOR TO HE INSTALLATION OF SAID WORK. ANY WORK INSTALLED IN CONFLICT WITH THE ARCHITECTURAL DRAWINGS SHALL BE CORRECTED BY THE CONTRACTOR AT THEIR OWN EXPENSE.
- CONTRACTOR IS TO MAKE EXACT DETERMINATION AS TO THE LOCATION OF ALL EXISTING UTILITIES. DO NOT BEGIN WORK UNTIL THIS DETERMINATION HAS BEEN MADE. CONTRACTOR IS FULLY RESPONSIBLE FOR DAMAGE CAUSED BY FAILURE TO LOCATE AND PRESERVE UTILITIES.
- PROVIDE GALVANIC ISOLATION BETWEEN DISSIMILAR METALS.
- CONTINUE GYPSUM BOARD OR PLASTER BEHIND ALL OPENINGS INCLUDING WALL CABINETS, RECESSED FIRE HOSE CABINETS AND ELECTRICAL PANELS AT FIRE/SMOKE RATED WALLS.
- ALL PENETRATIONS THROUGH FIRE RATED WALLS AND SHAFTS SHALL BE EQUIPPED WITH DAMPERS, SEALANTS OR OTHER APPROPRIATE AND APPROVED MATERIALS AND METHODS SO AS TO MAINTAIN THAT RATING.
- FINISHES:
 - ALL FLOOR FINISHES SHALL BE CLASS 1 PER NFPA 253. FLAME SPREAD FOR ALL WALL AND CEILING FINISHES SHALL NOT EXCEED 25.
 - ANY DECORATIONS USED SHALL BE NON COMBUSTIBLE OR FLAME PROOFED IN AN APPROVED MANNER.
 - ALL FINISH MATERIALS SHALL COMPLY WITH REQUIREMENTS OF CBC CHAPTER 7.

F.S. 0-25	CLASS A	SMOKE-DEVELOPED 0-450
F.S. 26-75	CLASS B	SMOKE-DEVELOPED 0-450
F.S. 76-200	CLASS C	SMOKE-DEVELOPED 0-450
 - ALL EXTERIOR AND INTERIOR WALL INSULATION SHALL BE NON COMBUSTIBLE.
- FIRE EXTINGUISHERS SHALL BE PROVIDED AS REQUIRED BY THE FIRE MARSHAL. TRAVEL DISTANCE SHALL NOT BE MORE THAN 75 TO ANY FIRE EXTINGUISHER LOCATION. (MIN. RATING 2A-10B-C-CURRENT SF SERVICE TAG) MOUNTED MAXIMUM 54" ABOVE FINISH FLOOR.
- HAZARDOUS MATERIALS:** SAvELY HEALTHCARE ARCHITECTS ASSUMES NO RESPONSIBILITY RELATING TO ANY TOXIC MATERIALS, INCLUDING ASBESTOS, AND ASSUMES NO RESPONSIBILITY RELATING TO ITS EXISTENCE OR REMOVAL. THE OWNER WILL TAKE ACTION WITH A CONSULTANT OR SPECIALIST, LICENSED BY THE STATE OF CALIFORNIA, SHOULD ANY HAZARDOUS MATERIALS RELATED SERVICE BE REQUIRED ON THE PROJECT.

PROJECT LOCATION



PROJECT TEAM

ARCHITECT:
SAVELY HEALTHCARE ARCHITECTS
18008 SKY PARK CIRCLE, SUITE 290
IRVINE, CA 92614
(949) 599-6737
GUY LE, PROJECT MANAGER
guy@savelyhealthcarearchitects.com

STRUCTURAL:
SPIRE STRUCTURAL ENGINEERING
26481 RANCHO PARKWAY SOUTH
LAKE FOREST, CA 92530
(949) 916-3440
ALEX BLETSOS - P.E.
abletsos@spirestructures.com

PROJECT SCOPE

PROJECT SCOPE:
ADDING A STRUCTURAL FENCE TO THE EXTERIOR BALCONY OF THE BEHAVIOR HEALTH SECOND FLOOR.

PROJECT LOCATION: SECOND FLOOR, MENTAL HEALTH BUILDING, EXTERIOR

PROJECT SQUARE FOOTAGE: **1,680 SQ. FT.**

PROJECT DATA

BUILDING ADDRESS:	400 N. PEPPER AVENUE COLTON, CALIFORNIA 92324
BUILDING OWNER:	ARROWHEAD REGIONAL MEDICAL CENTER
BUILDING USE:	ACUTE PSYCHIATRIC HOSPITAL
OCCUPANCY TYPE:	I-2 - INSTITUTIONAL GROUP
CONSTRUCTION TYPE:	I-A
AUTOMATIC SPRINKLERS:	PROVIDED THROUGHOUT
STORIES:	3 STORIES
OSHPD FACILITY NUMBER:	17282
OSHPD BUILDING NUMBER:	BLD-0074, D&T, BLDG 04
SPC RATING:	SPC 5
NPC RATING:	NPC 4

APPLICABLE CODES

2019 California Administrative Code (CAC)
Part 1, Title 24, California Code of Regulations (CCR)

2019 California Building Code (CBC) Part 2, Title 24, CCR
Based on the 2018 International Building Code (IBC)

2019 California Electrical Code (CEC) Part 3, Title 24, CCR
Based on the 2017 National Electrical Code (NEC)

2019 California Mechanical Code (CMC) Part 4, Title 24, CCR
Based on the 2018 Uniform Mechanical Code (UMC)

2019 California Plumbing Code (CPC) Part 5, Title 24, CCR
Based on the 2018 Uniform Plumbing Code (UPC)

2019 California Energy Code (CEC) Part 6, Title 24, CCR

2019 California Fire Code (CFC) Part 9, Title 24, CCR
Based on the 2018 International Fire Code (IFC)

NFPA 101, 2018 Edition, Fire Life Safety

2019 California Green Building Standards Code (CALGreen)
Part 11, Title 24, CCR

2019 California Referenced Standards Code (CRSC)
Part 12, Title 24, CCR

DEFERRED APPROVAL ITEMS

INSTALLATION OF:

NO DEFERRED APPROVALS ON THIS PROJECT.

SHALL NOT BE STARTED UNTIL DETAILED PLANS AND SPECIFICATIONS HAVE BEEN APPROVED BY THE OFFICE OF STATEWIDE HEALTH AND PLANNING DEPARTMENT.

THE DRAWINGS AND SPECIFICATIONS OF THE DEFERRED APPROVAL ITEMS MUST BE SUBMITTED TO THE ARCHITECT OR STRUCTURAL ENGINEER OF RECORD FOR REVIEW AND APPROVAL WITH STAMP AND SIGNATURE BEFORE SUBMITTAL TO THE OFFICE OF STATEWIDE HEALTH PLANNING AND DEVELOPMENT.

CONSTRUCTION OF DEFERRED APPROVAL ITEMS BEFORE DRAWINGS AND SPECIFICATIONS HAVE BEEN APPROVED BY THE OFFICE OF STATEWIDE HEALTH AND PLANNING AND DEVELOPMENT IS DEEMED NON-CONFORMING AND WILL RESULT IN WITHHOLDING OF APPROVAL OF THE ENTIRE PROJECT.

LIST OF DRAWINGS

GENERAL

G001	TITLE SHEET
G002	OSHPD AND TIO NOTES
G003	SHEET SPECIFICATIONS

ARCHITECTURAL

A111	FIRST FLOOR FIRE & LIFE SAFETY / ACCESSIBILITY PLAN
A121	SECOND FLOOR FIRE & LIFE SAFETY / ACCESSIBILITY PLAN
A130	FLOOR PLAN
A131	ROOF PLAN
A201	EXTERIOR ELEVATIONS
A202	EXTERIOR ELEVATIONS
A501	SECTIONS AND DETAILS

STRUCTURAL

S001	GENERAL NOTES
S101	PLANS & DETAILS
S501	DETAILS

ARCHITECT

Savely
Healthcare Architects

ARCHITECTURE + PLANNING + DESIGN

18008 Sky Park Circle, Suite 290
Irvine, CA 92614
(949) 431-0071

PROJECT

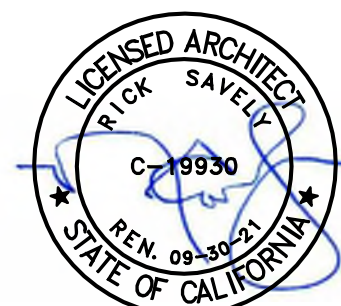
**ARROWHEAD REGIONAL
MEDICAL CENTER**

**400 N. PEPPER AVE.
COLTON, CA 92324**

**CHAIN LINK FENCE ENCLOSURE-
BEHAVIORAL HEALTH**

NO. DATE REVISIONS

PROFESSIONAL SEALS



AGENCY APPROVAL

DRAWN BY CHECKED BY DATE

FM	GL	11.30.2020

PROJECT NUMBER

SHA # 19327.000

OSHPD # S202245-36-00

SHEET TITLE

TITLE SHEET

SHEET NUMBER

THE TYPE OF APPROVAL TO BE ISSUED BY THE OFFICE OF STATEWIDE HEALTH AND PLANNING DEPARTMENT FOR THIS PROJECT IS:

NON-STRUCTURAL ALTERATION

S202245-36-00

G001

1

2

3

4

5

6

7

8

9

10

11

12

13

14

15

16

17

18

R

Q

P

N

M

L

K

J

H

G

F

E

D

C

B

A

1

2

3

4

5

6

7

8

9

10

11

12

13

14

15

16

17

18

OSHDP NOTES

1. THE INTENT OF THE CONSTRUCTION DOCUMENTS IS TO RECONSTRUCT THE HOSPITAL BUILDING IN ACCORDANCE WITH THE 2019 CBC. SHOULD ANY CONDITION DEVELOP NOT COVERED BY THE APPROVED CONSTRUCTION DOCUMENTS, WHEREIN THE FINISHED WORK WILL NOT COMPLY WITH THE 2019 CBC, AMENDED CONSTRUCTION DOCUMENTS (ACD'S) DETAILING AND SPECIFYING THE REQUIRED WORK SHALL BE SUBMITTED TO AND APPROVED BY OSHPD BEFORE PROCEEDING WITH THE WORK.
REFERENCE: 2019 CAC SECTION 7-109 AND 2019 CBC SECTIONS 107 AND 116.

2. SUPPORTS AND ATTACHMENTS OF ALL EQUIPMENT TO BE INSTALLED AS A PART OF THIS PROJECT SHALL BE DETAILED ON CONSTRUCTION DOCUMENTS, EXCEPT THOSE EXEMPT BY THE 2019 CBC SECTION 1617A.1.18. EQUIPMENT SUPPORTS AND ATTACHMENTS SHALL BE APPROVED BY THE APPROPRIATE DESIGN PROFESSIONAL OF RECORD (RDP) AND OSHPD AS A PART OF THE FIELD REVIEWS/OBSERVATIONS. THE INSPECTOR OF RECORD (IOR) SHALL ASSURE THAT THE ABOVE REQUIREMENTS ARE ENFORCED.
REFERENCE: 2019 CBC SECTIONS 107 AND 1617A.

TEMPORARY AND MOVABLE (MOBILE) COMPONENTS AND EQUIPMENT MAY BE EXEMPT FROM SUPPORTS AND ATTACHMENTS CONSTRUCTION DOCUMENTS REVIEW BY OSHPD IN ACCORDANCE WITH THE CBC 1617A.1.18. WHERE COMPONENTS ARE IDENTIFIED AS "TEMPORARY", THE DRAWINGS SHOULD INDICATE THE EXPECTED DURATION OF USE AND INTENDED PERMANENT REPLACEMENT COMPONENT. EQUIPMENT MAY BE CONSIDERED "MOVABLE" IF DURING NORMAL USE OF THE COMPONENT, IT IS MOVED FROM ONE LOCATION TO ANOTHER. COMPONENTS MOUNTED ON WHEELS TO FACILITATE PERIODIC MAINTENANCE OR CLEANING BUT WHICH OTHERWISE REMAIN IN THE SAME LOCATION ARE NOT CONSIDERED MOVABLE FOR THE PURPOSES OF SUPPORTS, ATTACHMENT AND BRACING.
REFERENCE: 2019 CBC SECTIONS 108, 1617A.1.18 AND CAN 2-108.

3. PRE-APPROVED PIPES, DUCTS AND CONDUITS SEISMIC BRACING

A. LAYOUT DRAWINGS OF THE SUPPORTS, ATTACHMENTS AND BRACING SYSTEMS IN ACCORDANCE WITH THE PRE-APPROVAL SHALL BE SUBMITTED TO THE REGISTERED DESIGN PROFESSIONAL (RDP) IN RESPONSIBLE CHARGE OF THE PROJECT FOR REVIEW TO VERIFY THAT THE DETAILS ARE IN CONFORMANCE WITH THE CODE REQUIREMENTS. THE LAYOUT DRAWINGS SHALL AS A MINIMUM SATISFY THE REQUIREMENTS OF ASCE 7 SECTION 13.6 AS MODIFIED BY THE CBC 2019 SECTION 1617A.

a) THE STRUCTURAL ENGINEER OF RECORD (SEOR) SHALL VERIFY THAT THE SUPPORTING STRUCTURE IS ADEQUATE FOR THE FORCES IMPOSED ON IT BY THE SUPPORTS, ATTACHMENTS, AND BRACES INSTALLED IN ACCORDANCE WITH THE PRE-APPROVAL IN ADDITION TO ALL LOADS.

b) THE SEOR SHALL FORWARD THE SUPPORTS, ATTACHMENTS, AND BRACING DRAWINGS (INCLUDING APPROVED AMENDED CONSTRUCTION DOCUMENTS FOR SUPPLEMENTARY FRAMING WHERE REQUIRED) TO THE DISCIPLINE IN RESPONSIBLE CHARGE WITH A NOTATION INDICATING THAT THE DRAWINGS HAVE BEEN REVIEWED AND ARE IN GENERAL CONFORMANCE WITH THE PRE-APPROVAL AND THE DESIGN OF THE PROJECT.

c) A "SHOP DRAWING STAMP" MAY BE USED TO INDICATE COMPLIANCE WITH THIS REQUIREMENT.

d) THE REGISTERED DESIGN PROFESSIONAL (RDP), OTHER THAN SEOR, MAY PROVIDE THE SHOP DRAWING STAMP FOR SMALL PROJECTS AT THE DISCRETION OF THE OSHPD DISTRICT STRUCTURAL ENGINEER.

B. THE SEOR SHALL DESIGN ANY SUPPLEMENTARY FRAMING THAT IS NEEDED TO RESIST THE LOADS, MAINTAIN STABILITY AND/OR IS REQUIRED FOR INSTALLATION OF PRE-APPROVED SYSTEM. THE SUPPLEMENTARY FRAMING SHALL BE SUBMITTED TO OSHPD AS AN AMENDED CONSTRUCTION DOCUMENT (ACD).

C. THE LAYOUT DRAWINGS (WITH THE AOR/SEOR SHOP DRAWING STAMP) SHALL BE SUBMITTED TO THE OSHPD TO REVIEW:

1) STRUCTURE SUPPORTING THE DISTRIBUTION SYSTEM HAS ADEQUATE CAPACITY.

2) SEISMIC DESIGN FORCES (Fp) ARE IN ACCORDANCE WITH THE CBC 2019; AND

3) VERIFY THAT SUBMITTAL IS WITHIN THE SCOPE OF OSHPD PREAPPROVAL OR MANUFACTURER'S CERTIFICATION (OPM):

a. SIZE AND DISTRIBUTION OF SYSTEM COMPONENTS.

b. SPACING OF FRAMING AND FLEX. JOINTS, AND

c. SUBSTRATE FOR ATTACHMENTS.

D. THE LAYOUT DRAWINGS (WITH THE SHOP DRAWING STAMP) SHALL BE KEPT ON THE JOBSITE AND CAN THEN BE USED FOR INSTALLATION OF THE SUPPORT AND BRACING. OSHPD FIELD STAFF WILL REVIEW THE INSTALLATION.

E. A COPY OF THE CHOSEN BRACING SYSTEM(S) INSTALLATION GUIDE/OPM MANUAL SHALL BE ON THE JOBSITE PRIOR TO STARTING THE INSTALLATION OF HANGERS AND/OR BRACES. IT IS THE CONTRACTOR'S RESPONSIBILITY TO OBTAIN COPIES OF OPM AND FURNISH THE INSPECTOR OR RECORD WITH ONE COPY OF EACH.

F. COMPONENTS OF TWO OR MORE PRE-APPROVED BRACING SYSTEMS SHALL NOT BE MIXED. ONLY ONE PRE-APPROVED BRACING SYSTEM MAY BE USED FOR A RUN OF PIPE, DUCT OR CONDUIT. ANY SUBSTITUTION OF COMPONENT OF AN OPM SYSTEM SHALL REQUIRE OSHPD REVIEW AND APPROVAL.
REFERENCE: 2019 CAC SECTIONS 7-115, 7-126, 7-153 AND CBC 2019 SECTION 107.

5. THE SPACING AND DETAILS OF THE SUPPORTS, ATTACHMENTS AND BRACING OF FIRE SPRINKLER PIPING SHALL COMPLY WITH THE NFPA 13A AS MODIFIED BY THE 2019 CBC SECTIONS 1617A AND STATE FIRE MARSHAL AMENDMENTS. PROVIDE DETAILS AND CALCULATIONS FOR THE SWAY BRACING SUPPORTS AND THEIR ATTACHMENTS TO THE STRUCTURE. WHERE APPLICABLE, DETAILS FOR THE SUPPORTS, ATTACHMENTS AND BRACING MAY BE REFERRED TO AN OSHPD PREAPPROVAL OF MANUFACTURER'S CERTIFICATION (OPM). ALL LAYOUT DRAWINGS OF THE SPRINKLER SYSTEM SHALL BE SUBMITTED TO OSHPD FOR REVIEW AND APPROVAL PRIOR TO INSTALLATION. SUBMITTAL SHALL BE STAMPED AND SIGNED PER THE PROVISIONS OF CAC 7-115 BY THE DESIGN PROFESSIONAL PREPARING THE DOCUMENTS
REFERENCE: 2019 CAC SECTIONS 7-115, 7-126 AND 2019 CBC SECTION 107.

6. WHEN INSTALLING DRILLED IN ANCHORS AND/OR POWDER DRIVEN PINS IN EXISTING NON-PRESTRESSED REINFORCED CONCRETE, USE CARE AND CAUTION TO AVOID CUTTING OR DAMAGING THE EXISTING REINFORCING BARS. WHEN INSTALLING THEM INTO EXISTING PRESTRESSED CONCRETE (PRE OR POST-TENSIONED) LOCATE THE PRESTRESSED TENDONS BY USING A NON-DESTRUCTIVE METHOD PRIOR TO INSTALLATION. EXERCISE EXTREME CARE AND CAUTION TO AVOID CUTTING OR DAMAGING THE TENDONS DURING INSTALLATION. MAINTAIN A MINIMUM CLEARANCE OF ONE INCH BETWEEN THE REINFORCEMENT AND THE DRILLED IN ANCHOR AND/OR PIN.
REFERENCE: 2019 CBC SECTION 1603A.1.10.

T.I.O.

TITLE 24, PART 1 CALIFORNIA ADMINISTRATION CODE, SECTION 7-141 REQUIRES AN OSHPD APPROVED TESTING AND INSPECTION AND OBSERVATION PROGRAM FOR EACH PROJECT. THIS TIO PROGRAM IS CONSIDERED PART OF THE APPROVED CONTRACT DOCUMENTS.

THE PROJECT INSPECTOR OF RECORD SHALL REQUEST A COPY OF THE TESTING, INSPECTION, AND OBSERVATION PROGRAM FROM THE ARCHITECT.

THE PROJECT INSPECTOR OF RECORD SHALL FORWARD COMPLETED TESTING AND INSPECTION FORMS TO THE ARCHITECT FOR SUBMITTAL TO THE OSHPD OFFICE IN CONJUNCTION WITH PROJECT CLOSURE.

TESTING

THE TESTING PROGRAM IDENTIFIES MATERIALS AND TESTS TO BE PERFORMED ON THIS PROJECT. THE FIRM(S) AND/OR INDIVIDUAL(S) TO PERFORM EACH OF THE REQUIRED TESTS ARE IDENTIFIED. AN APPROVED LIST WILL BE PRODUCED TO THE CONTRACTOR 2 WEEKS AFTER ISSUANCE OF THE NOTICE TO PROCEED.

THE GENERAL CONTRACTOR SHALL NOTIFY THE INSPECTOR OF RECORD IN WRITING AT LEAST 24 HOURS PRIOR TO EACH REQUIRED TEST. THE CONTRACTOR IS RESPONSIBLE FOR CONTACTING THE FIRM AND/OR INDIVIDUAL PERFORMING THE TEST, SCHEDULING AND COORDINATING THE REQUIRED TEST.

THE TESTING REPORT SHALL BE SUBMITTED TO THE ARCHITECT AND INSPECTOR OF RECORD WITHIN ONE WEEK OF TEST COMPLETION.

INSPECTION

THE INSPECTIONS PROGRAM IDENTIFIES INSPECTIONS TO BE PERFORMED ON THIS PROJECT.

THE GENERAL CONTRACTOR SHALL NOTIFY THE INSPECTOR OF RECORD IN WRITING AT LEAST 24 HOURS PRIOR TO EACH REQUIRED INSPECTION. THE CONTRACTOR IS RESPONSIBLE FOR CONTACTING THE FIRM AND/OR INDIVIDUAL PERFORMING THE INSPECTION, SCHEDULING AND COORDINATING THE REQUIRED INSPECTION.

THE INSPECTION REPORT SHALL BE SUBMITTED TO THE ARCHITECT AND INSPECTOR OF RECORD WITHIN ONE WEEK OF INSPECTION COMPLETION.

OBSERVATION

THE OBSERVATION PROGRAM IDENTIFIES EACH PROFESSIONAL THAT MUST, THROUGH PERSONAL KNOWLEDGE, AS DEFINED IN CCR 7-24 PART 1 SEC. 7-151, VERIFY THAT THE WORK IS IN COMPLIANCE WITH THE APPROVED PLANS AND SPECIFICATIONS. THE CONTRACTOR OR OWNER/BUILDER AND THE INSPECTOR OF RECORD SHALL VERIFY THAT THE WORK IS IN COMPLIANCE WITH THE APPROVED PLANS AND SPECIFICATIONS IN ACCORDANCE WITH THE REQUIREMENTS FOR PERSONAL KNOWLEDGE AS IT APPLIES TO EACH PARTICIPANT OR DISCIPLINE. THE PROGRAM GIVES SPECIFIC INTERVALS OR PROJECT MILESTONES AT WHICH SUCH OBSERVATION IS TO OCCUR FOR EACH EFFECTED PARTICIPANT OR DISCIPLINE.

THE GENERAL CONTRACTOR SHALL NOTIFY THE ARCHITECT OF RECORD AND INSPECTOR OF RECORD AT LEAST 72 HOURS PRIOR TO PREPARATION BEING COMPLETED FOR EACH REQUIRED OBSERVATION ITEM.

WORK TO BE OBSERVED SHALL NOT BE COVERED, OCCUPIED, OR USED UNTIL WRITTEN ACCEPTANCE BY ALL INDIVIDUALS IDENTIFIED IN THE TABLE AND THE OSHPD FIELD STAFF AND HAS BEEN RECEIVED BY THE INSPECTOR OF RECORD.

VERIFIED COMPLIANCE REPORT (VRS)

A VERIFIED COMPLIANCE REPORT IS REQUIRED TO BE COMPLETED FOR CONSTRUCTION OBSERVATION MILESTONES AT INTERVALS LISTED IN SECTION "D" OF T.I.O. ALL VRS SHALL BE SUBMITTED TO THE ARCHITECT WITHIN ONE WEEK OF OBSERVATION.

THE CONSTRUCTION OBSERVATION MILESTONES SHALL BE LISTED IN THE PROJECT CONSTRUCTION SCHEDULE.

THE INSPECTOR OF RECORD SHALL MAINTAIN COPIES OF ALL VERIFIED COMPLIANCE REPORT FORMS.

ARCHITECT

Savely
Healthcare Architects
ARCHITECTURE + PLANNING + DESIGN

18008 Sky Park Circle, Suite 290
Irvine, CA 92614
(949) 431-0071

PROJECT
ARROWHEAD REGIONAL
MEDICAL CENTER
400 N. PEPPER AVE.
COLTON, CA 92324

CHAIN LINK FENCE ENCLOSURE-
BEHAVIORAL HEALTH

NO.	DATE	REVISIONS

PROFESSIONAL SEALS

AGENCY APPROVAL

DRAWN BY	CHECKED BY	DATE
FM	GL	11.30.2020

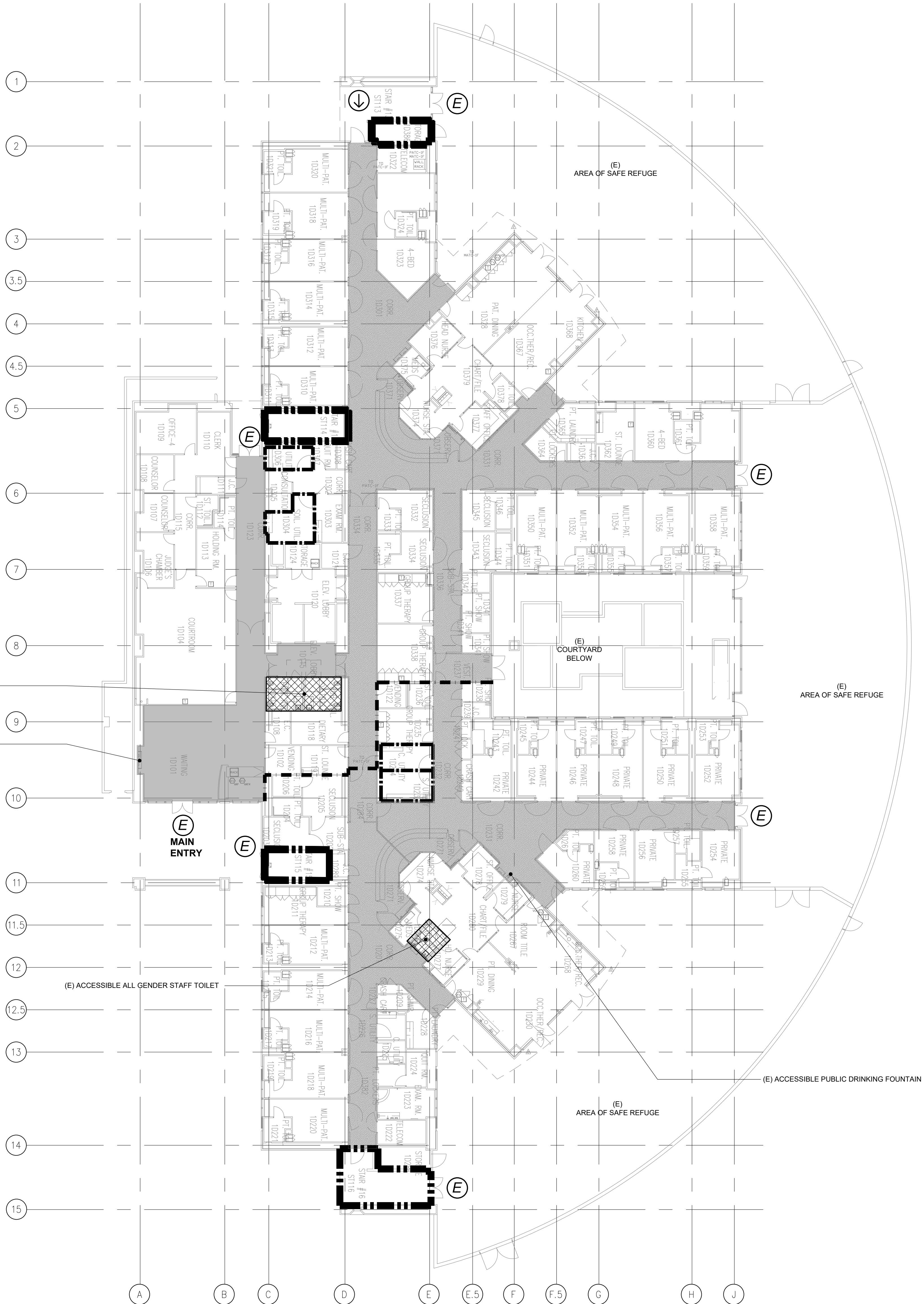
PROJECT NUMBER
SHA # 19327.000
OSHDP # S202245-36-00

SHEET TITLE
OSHDP & TIO NOTES

SHEET NUMBER

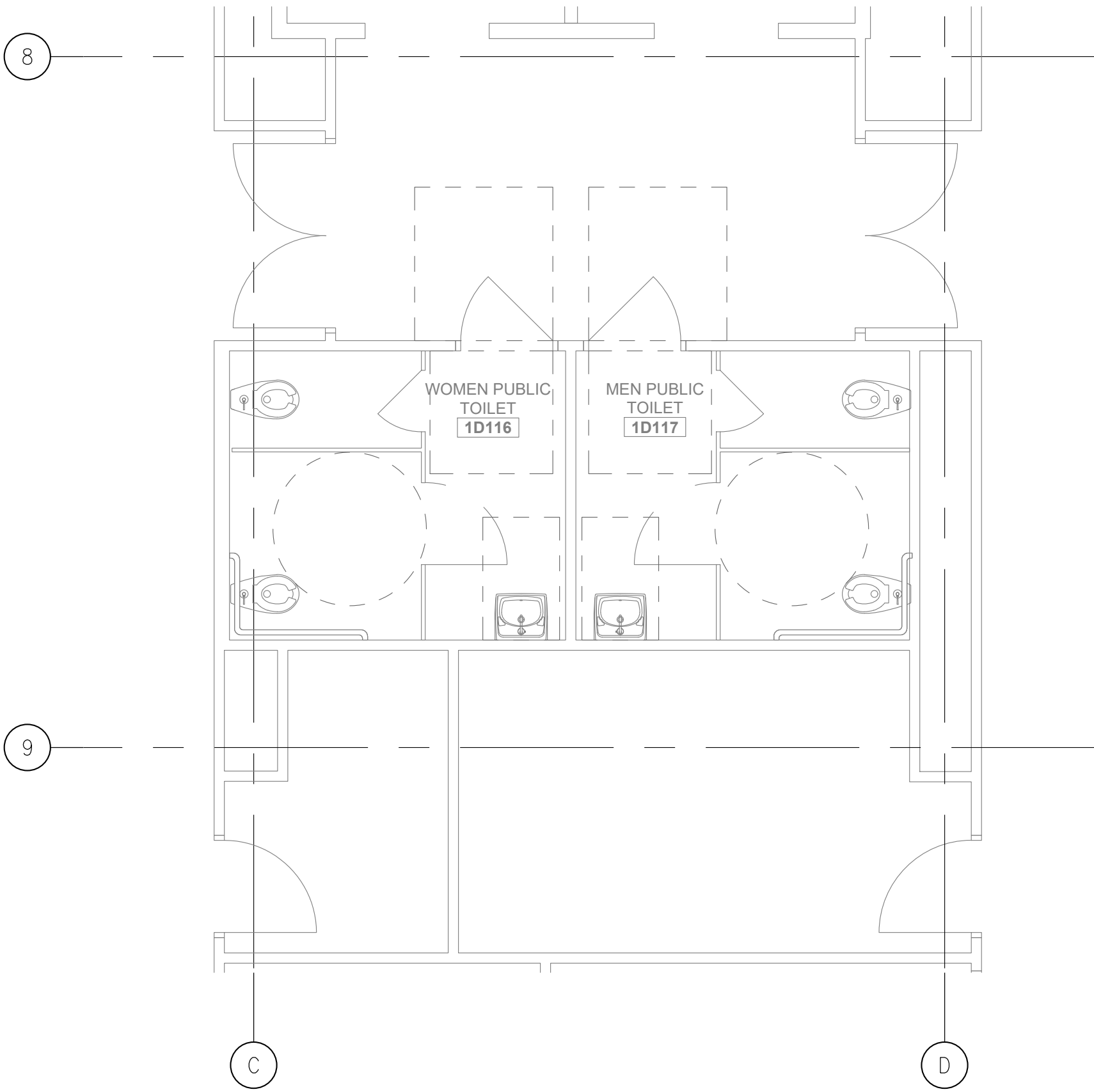
G002

	1	2	3	4	5	6	7	8	9	10	11	12	13	14	15	16	17	18
R	SECTION 011000 - SUMMARY 1. CONTRACTOR SHALL HAVE LIMITED USE OF PREMISES FOR CONSTRUCTION OPERATIONS AS INDICATED IN THE CONSTRUCTION CONTRACT. 2. LIMIT USE OF PREMISES TO WORK AREAS INDICATED. DO NOT DISTURB PORTIONS OF PROJECT SITE BEYOND AREAS IN WHICH THE WORK IS INDICATED. 3. OWNER OCCUPANCY: ALLOW FOR OWNER OCCUPANCY OF PROJECT SITE AND SELECTED AREAS BY THE PUBLIC. 4. DRIVEWAYS AND ENTRANCES: KEEP DRIVEWAYS, PARKING AREAS,LOADING AREAS, AND ENTRANCES SERVING PREMISES CLEAR AND AVAILABLE TO OWNER, OWNER'S EMPLOYEES, AND EMERGENCY VEHICLES AT ALL TIMES. DO NOT USE THESE AREAS FOR PARKING OR STORAGE OF MATERIALS. 5. USE OF EXISTING BUILDING: MAINTAIN EXISTING BUILDING IN A WEATHERTIGHT CONDITION THROUGHOUT CONSTRUCTION PERIOD. REPAIR DAMAGE CAUSED BY CONSTRUCTION OPERATIONS. PROTECT BUILDING AND ITS OCCUPANTS DURING CONSTRUCTION PERIOD. 6. ON-SITE WORK HOURS: WORK SHALL BE GENERALLY PERFORMED INSIDE THE EXISTING BUILDING DURING NORMAL BUSINESS WORKING HOURS OF 7 A.M. TO 5 P.M., MONDAY THROUGH FRIDAY, EXCEPT OTHERWISE INDICATED. 7. EXISTING UTILITY INTERRUPTIONS: DO NOT INTERRUPT UTILITIES SERVING FACILITIES OCCUPIED BY OWNER OR OTHERS UNLESS PERMITTED UNDER THE FOLLOWING CONDITIONS, AND THEN ONLY AFTER ARRANGING TO PROVIDE TEMPORARY UTILITY SERVICES ACCORDING TO REQUIREMENTS INDICATED. 8. DEFERRED APPROVAL ITEMS ARE LISTED ON DRAWINGS. 9. CONTRACTOR IS SOLELY RESPONSIBLE FOR OBTAINING ALL NECESSARY APPROVALS AND ALL COSTS ASSOCIATED WITH OBTAINING THE APPROVAL OF AGENCY HAVING JURISDICTION (AHJ) INCLUDING ALL ARCHITECTURAL AND ENGINEERING FEES FOR COORDINATING WITH AGENCY HAVING JURISDICTION (AHJ) BEYOND REVIEW AND SHIPPING OF TWO SEPARATE CONTRACTOR PROVIDED SUBMITTALS. DO NOT COMMENCE INSTALLATION OF ANY DEFERRED APPROVAL ITEM UNTIL ALL APPROVALS HAVE BEEN OBTAINED. 10. LEAD-BASED PAINT SHOULD BE REMOVED ONLY BY PROFESSIONALS TRAINED IN HAZARDOUS MATERIAL REMOVAL. A TRAINED PROFESSIONAL MUST FOLLOW VERY DETAILED PROCEDURES TO MINIMIZE, CONTROL AND CONTAIN LEAD DUST GENERATED BY THE REMOVAL PROCESS.																	
Q	END OF SECTION 011000																	
P	SECTION 012600 - CONTRACT MODIFICATION PROCEDURES 1. PROPOSAL REQUESTS ISSUED ARE FOR INFORMATION ONLY. DO NOT CONSIDER THEM INSTRUCTIONS EITHER TO STOP WORK IN PROGRESS OR TO EXECUTE THE PROPOSED CHANGE. 2. WITHIN TIME SPECIFIED IN PROPOSAL REQUEST AFTER RECEIPT OF PROPOSAL REQUEST, SUBMIT A QUOTATION ESTIMATING COST ADJUSTMENTS TO THE CONTRACT SUM AND THE CONTRACT TIME NECESSARY TO EXECUTE THE CHANGE. 3. INCLUDE A LIST OF QUANTITIES OF PRODUCTS REQUIRED OR ELIMINATED AND UNIT COSTS, WITH TOTAL AMOUNT OF PURCHASES AND CREDITS TO BE MADE. IF REQUESTED, FURNISH SURVEY DATA TO SUBSTANTIATE QUANTITIES. 4. INDICATE APPLICABLE TAXES, DELIVERY CHARGES, EQUIPMENT RENTAL, AND AMOUNTS OF TRADE DISCOUNTS. 5. INCLUDE COSTS OF LABOR AND SUPERVISION DIRECTLY ATTRIBUTABLE TO THE CHANGE. 6. INCLUDE AN UPDATED CONTRACTOR'S CONSTRUCTION SCHEDULE THAT INDICATES THE EFFECT OF THE CHANGE, INCLUDING, BUT NOT LIMITED TO, CHANGES IN ACTIVITY DURATION, START AND FINISH TIMES, AND ACTIVITY RELATIONSHIP. USE AVAILABLE TOTAL FLOAT BEFORE REQUESTING AN EXTENSION OF THE CONTRACT TIME. 7. ON OWNER'S APPROVAL OF A PROPOSAL REQUEST, ARCHITECT MAY ISSUE A CHANGE ORDER FOR SIGNATURES OF OWNER AND CONTRACTOR. 8. ARCHITECT MAY ISSUE A CONSTRUCTION CHANGE DIRECTIVE. CONSTRUCTION CHANGE DIRECTIVE INSTRUCTS CONTRACTOR TO PROCEED WITH A CHANGE IN THE WORK, FOR SUBSEQUENT INCLUSION IN A CHANGE ORDER. 9. CONSTRUCTION CHANGE DIRECTIVE CONTAINS A COMPLETE DESCRIPTION OF CHANGE IN THE WORK. IT ALSO DESIGNATES METHOD TO BE FOLLOWED TO DETERMINE CHANGE IN THE CONTRACT SUM OR THE CONTRACT TIME. 10. DOCUMENTATION: MAINTAIN DETAILED RECORDS ON A TIME AND MATERIAL BASIS OF WORK REQUIRED BY THE CONSTRUCTION CHANGE DIRECTIVE. 11. AFTER COMPLETION OF CHANGE, SUBMIT AN ITEMIZED ACCOUNT AND SUPPORTING DATA NECESSARY TO SUBSTANTIATE COST AND TIME ADJUSTMENTS TO THE CONTRACT.																	
M	END OF SECTION 012600																	
L	SECTION 012900 - PAYMENT PROCEDURES 1. COORDINATE PAYMENT SCHEDULE OF THE SCHEDULE OF VALUES WITH PREPARATION OF CONTRACTOR'S CONSTRUCTION SCHEDULE. 2. SUBMIT THE SCHEDULE OF VALUES TO ARCHITECT AT EARLIEST POSSIBLE DATE BUT NO LATER THAN 7 DAYS BEFORE THE DATE SCHEDULED FOR SUBMITTAL OF INITIAL APPLICATIONS FOR PAYMENT. 3. NO PAYMENT APPLICATIONS WILL BE SIGNED BY THE ARCHITECT PRIOR TO THE CONTRACTOR SUBMITTING, AND THE ARCHITECT REVIEWING, A SCHEDULE OF VALUES. 4. EACH APPLICATION FOR PAYMENT SHALL BE CONSISTENT WITH PREVIOUS APPLICATIONS AND PAYMENTS AS CERTIFIED BY ARCHITECT PAID FOR BY OWNER. 5. INITIAL APPLICATION FOR PAYMENT, APPLICATION FOR PAYMENT AT TIME OF SUBSTANTIAL COMPLETION, AND FINAL APPLICATION FOR PAYMENT INVOLVE ADDITIONAL REQUIREMENTS. 6. THE DATE FOR EACH PROGRESS PAYMENT IS INDICATED IN THE AGREEMENT BETWEEN OWNER AND CONTRACTOR. THE PERIOD OF CONSTRUCTION WORK COVERED BY EACH APPLICATION FOR PAYMENT IS THE PERIOD INDICATED IN THE AGREEMENT. 7. FINAL PAYMENT APPLICATION: SUBMIT FINAL APPLICATION FOR PAYMENT WITH RELEASES AND SUPPORTING DOCUMENTATION NOT PREVIOUSLY SUBMITTED AND ACCEPTED.																	
K	END OF SECTION 012900																	
J	SECTION 013100 - PROJECT MANAGEMENT AND COORDINATION 1. SCHEDULE AND CONDUCT MEETINGS AND CONFERENCES AT PROJECT SITE, UNLESS OTHERWISE INDICATED. 2. ATTENDEES: INFORM PARTICIPANTS AND OTHERS INVOLVED, AND INDIVIDUALS WHOSE PRESENCE IS REQUIRED, OF DATE AND TIME OF EACH MEETING. NOTIFY OWNER AND ARCHITECT OF SCHEDULED MEETING DATES AND TIMES. 3. AGENDA: PREPARE THE MEETING AGENDA. DISTRIBUTE THE AGENDA TO ALL INVITED ATTENDEES. 4. MINUTES: RECORD SIGNIFICANT DISCUSSIONS AND AGREEMENTS ACHIEVED. DISTRIBUTE THE MEETING MINUTES TO EVERYONE CONCERNED, INCLUDING OWNER AND ARCHITECT, WITHIN THREE DAYS OF THE MEETING. 5. FREQUENCY OF ATTENDANCE BY ARCHITECT: LIMITED BY ARCHITECT/OWNER CONTRACT. 6. SCHEDULE: A PRECONSTRUCTION CONFERENCE BEFORE STARTING CONSTRUCTION, AT A TIME CONVENIENT TO OWNER AND ARCHITECT, BUT NO LATER THAN 15 DAYS AFTER EXECUTION OF THE AGREEMENT. HOLD THE CONFERENCE AT PROJECT SITE OR ANOTHER CONVENIENT LOCATION. CONDUCT THE MEETING TO REVIEW RESPONSIBILITIES AND PERSONNEL ASSIGNMENTS. 7. CONTRACTOR MAY SUBMIT A RFI TO THE ARCHITECT SEEKING CLARIFICATION OR INTERPRETATION OF THE CONTRACT DOCUMENTS. IF IN THE CONTRACTOR'S OPINION THE NATURE OF THE RFI REQUIRES A DISCUSSION, RATHER THAN SIMPLY AN ANSWER, THE CONTRACTOR SHALL CALL THE ARCHITECT TO HAVE SUCH A DISCUSSION. THE RESULTS OF THAT DISCUSSION AS WELL AS ALL OTHER RFIS MUST BE PRESENTED IN WRITING ON A FORM APPROVED IN ADVANCED BY THE ARCHITECT ALONG WITH ANY SUPPORTING INFORMATION OR DATA, AS WELL AS THE CONTRACTOR'S RECOMMENDED RESOLUTION. AN ORAL RFI OR A RFI PRESENTED ON AN UNAPPROVED FORM, OR WITHOUT ADEQUATE SUPPORTING INFORMATION AND CONTRACTOR'S RECOMMENDED SOLUTION, WILL BE ATTRIBUTED SOLELY TO THE CONTRACTOR. ARCHITECT'S REVIEW OF OR RESPONSES TO RFIS SHALL NOT CONSTITUTE AN APPROVAL, DIRECTION, OR PROCEDURE RELATED TO THE CONSTRUCTION MEANS, METHODS, TECHNIQUES, SEQUENCES, OR PROCEDURES OF THE CONTRACTOR. 8. ARCHITECT'S REVIEW OF OR RESPONSES TO RFIS SHALL NOT CONSTITUTE AN APPROVAL, DIRECTION, OR PROCEDURE RELATED TO THE CONSTRUCTION SITE SAFETY PRECAUTIONS, PROCEDURES, OR METHODOLOGY OF THE CONTRACTOR. 9. LIMIT USE OF TEMPORARY UTILITY SERVICES TO CLARIFICATION OF THE CONTRACT DOCUMENTS. CONTRACTOR WILL LIMIT EACH RFI TO A SINGLE ISSUE. INFORMATION WHICH IS DISCERNABLE FROM THE CONTRACT DOCUMENTS; CONSTRUCTION MEANS AND METHODS; PRODUCT SUBSTITUTIONS; PRODUCT SUBMITTALS; AND CONSTRUCTION SITE SAFETY WILL NOT BE ADDRESSED BY THE ARCHITECT IN RESPONDING TO A RFI. 10. ARCHITECT'S RESPONSE TO A RFI IS NOT A CHANGE ORDER OR DIRECTIVE AUTHORIZING AN INCREASE IN CONSTRUCTION COST OR TIME. 11. FRIVOLOUS OR UNNECESSARILY HIGH COST OF DESIGN PROFESSIONAL'S TIME WILL BE BILLED OR DEDUCTED FROM PROGRESS PAYMENT. 12. ARCHITECT WILL REVIEW EACH RFI, DETERMINE ACTION REQUIRED, AND RETURN IT. ALLOW 21 DAYS FOR ARCHITECT'S RESPONSE FOR EACH RFI. RFIS RECEIVED AFTER 1:00 P.M. WILL BE CONSIDERED AS RECEIVED THE FOLLOWING WORKING DAY.																	
F	END OF SECTION 013100																	
E	SECTION 013200 - CONSTRUCTION PROGRESS DOCUMENTATION 1. CONTRACTOR'S CONSTRUCTION SCHEDULE: SUBMIT TWO OPAQUE COPIES OF INITIAL SCHEDULE, LARGE ENOUGH TO SHOW ENTIRE SCHEDULE FOR ENTIRE CONSTRUCTION PERIOD. 2. COORDINATE SUBMITTALS SCHEDULE WITH LIST OF SUBCONTRACTS, THE SCHEDULE OF VALUES, AND CONTRACTOR'S CONSTRUCTION SCHEDULE. 3. COMPLY WITH PROCEDURES CONTAINED IN AGC'S "CONSTRUCTION PLANNING & SCHEDULING."																	
D	END OF SECTION 013200																	
C	SECTION 013300 - SUBMITTAL PROCEDURES 1. ARCHITECT RESERVE THE RIGHT TO WITHHOLD ACTION ON A SUBMITTAL REQUIRING COORDINATION WITH OTHER SUBMITTALS UNTIL RELATED SUBMITTALS ARE RECEIVED. 2. PROCESSING TIME: ALLOW 15 DAYS. 3. NOTE DATE AND CONTENT OF PREVIOUS SUBMITTAL. 4. NOTE DATE AND CONTENT OF REVISION IN LABEL OR TITLE BLOCK AND CLEARLY INDICATE EXTENT OF REVISION. 5. RESUBMIT SUBMITTALS UNTIL THEY ARE MARKED "APPROVED" OR "FURNISH AS NOTED".																	
B	END OF SECTION 013300																	
A	SECTION 014000 - QUALITY REQUIREMENTS 1. EXPERIENCED: WHEN USED WITH AN ENTITY, "EXPERIENCED" MEANS HAVING SUCCESSFULLY COMPLETED A MINIMUM OF 5 PREVIOUS PROJECTS SIMILAR IN SIZE AND SCOPE TO THIS PROJECT; BEING FAMILIAR WITH SPECIAL REQUIREMENTS INDICATED; AND HAVING COMPLIED WITH REQUIREMENTS OF AUTHORITIES HAVING JURISDICTION. 2. IF COMPLIANCE WITH TWO OR MORE STANDARDS IS SPECIFIED AND THE STANDARDS ESTABLISH DIFFERENT OR CONFLICTING REQUIREMENTS FOR MINIMUM QUANTITIES OR QUALITY LEVELS, COMPLY WITH THE MOST STRINGENT REQUIREMENT. REFER UNCERTAINTIES AND REQUIREMENTS THAT ARE DIFFERENT, BUT APPARENTLY EQUAL, TO ARCHITECT FOR A DECISION BEFORE PROCEEDING. 3. MINIMUM QUANTITY OR QUALITY LEVELS: THE QUANTITY OR QUALITY LEVEL SHOWN OR SPECIFIED SHALL BE THE MINIMUM PROVIDED OR PERFORMED. THE ACTUAL INSTALLATION MAY COMPLY EXACTLY WITH THE MINIMUM QUANTITY OR QUALITY SPECIFIED, OR IT MAY EXCEED THE MINIMUM WITHIN REASONABLE LIMITS, TO COMPLY WITH THESE REQUIREMENTS, INDICATED NUMERIC VALUES ARE MINIMUM OR MAXIMUM, AS APPROPRIATE, FOR THE CONTEXT OF REQUIREMENTS. REFER UNCERTAINTIES TO ARCHITECT FOR A DECISION BEFORE PROCEEDING. 4. INSTALLER QUALIFICATIONS: A FIRM OR INDIVIDUAL EXPERIENCED IN INSTALLING, ERECTING, OR ASSEMBLING WORK SIMILAR IN MATERIAL, DESIGN, AND EXTENT TO THAT INDICATED FOR THIS PROJECT, WHOSE WORK HAS RESULTED IN CONSTRUCTION WITH A RECORD OF SUCCESSFUL IN-SERVICE PERFORMANCE. 5. MANUFACTURER QUALIFICATIONS: A FIRM EXPERIENCED IN MANUFACTURING PRODUCTS OR SYSTEMS SIMILAR TO THOSE INDICATED FOR THIS PROJECT AND WITH A RECORD OF SUCCESSFUL IN-SERVICE PERFORMANCE, AS WELL AS SUFFICIENT PRODUCTION CAPACITY TO PRODUCE REQUIRED ITEMS. 6. FABRICATOR QUALIFICATIONS: A FIRM EXPERIENCED IN PRODUCING PRODUCTS SIMILAR TO THOSE INDICATED FOR THIS PROJECT AND WITH A RECORD OF SUCCESSFUL IN-SERVICE PERFORMANCE, AS WELL AS SUFFICIENT PRODUCTION CAPACITY TO PRODUCE REQUIRED ITEMS.																	
	END OF SECTION 014000																	
	SECTION 014200 - REFERENCES 1. APPLICABILITY OF STANDARDS: UNLESS THE CONTRACT DOCUMENTS INCLUDE MORE STRINGENT REQUIREMENTS, APPLICABLE CONSTRUCTION INDUSTRY STANDARDS HAVE THE SAME FORCE AND EFFECT AS IF BOUND OR COPIED DIRECTLY INTO THE CONTRACT DOCUMENTS TO THE EXTENT REFERENCED. SUCH STANDARDS ARE MADE A PART OF THE CONTRACT DOCUMENTS BY REFERENCE. 2. PUBLICATION DATES: COMPLY WITH STANDARDS IN EFFECT AS OF DATE OF THE CONTRACT DOCUMENTS. UNLESS OTHERWISE INDICATED, THE LATEST EDITIONS OF STANDARDS SHALL BE USED. 3. COPIES OF STANDARDS: EACH ENTITY ENGAGED IN CONSTRUCTION ON PROJECT SHOULD BE FAMILIAR WITH INDUSTRY STANDARDS APPLICABLE TO ITS CONSTRUCTION ACTIVITY. COPIES OF APPLICABLE STANDARDS ARE NOT BOUND WITH THE CONTRACT DOCUMENTS. 4. WHERE COPIES OF STANDARDS ARE NEEDED TO PERFORM A REQUIRED CONSTRUCTION ACTIVITY, OBTAIN COPIES DIRECTLY FROM PUBLICATION SOURCE. 5. COPIES OF STANDARDS AND APPLICABLE BUILDING CODES (TITLE 24 PARTS 1-5) SHALL BE KEPT ON-SITE DURING CONSTRUCTION. 6. ABBREVIATIONS AND ACRONYMS FOR STANDARDS AND REGULATIONS: WHERE ABBREVIATIONS AND ACRONYMS ARE USED IN SPECIFICATIONS OR OTHER CONTRACT DOCUMENTS, THEY SHALL MEAN THE RECOGNIZED NAME OF THE STANDARDS AND REGULATIONS. 7. CODE AGENCIES, WHERE ABBREVIATIONS AND ACRONYMS ARE USED IN SPECIFICATIONS OR OTHER CONTRACT DOCUMENTS, THEY SHALL MEAN THE RECOGNIZED NAMES. 8. FEDERAL GOVERNMENT AGENCIES: WHERE ABBREVIATIONS AND ACRONYMS ARE USED IN SPECIFICATIONS OR OTHER CONTRACT DOCUMENTS, THEY SHALL MEAN THE RECOGNIZED NAMES. 9. STATE GOVERNMENT AGENCIES: WHERE ABBREVIATIONS AND ACRONYMS ARE USED IN SPECIFICATIONS OR OTHER CONTRACT DOCUMENTS, THEY SHALL MEAN THE RECOGNIZED NAMES.																	
	END OF SECTION 014200																	
	SECTION 015000 - TEMPORARY FACILITIES AND CONTROLS 1. ELECTRIC POWER SERVICE: PAY ELECTRIC POWER SERVICE USE CHARGES FOR ELECTRICITY USED BY ALL ENTITIES FOR CONSTRUCTION OPERATIONS. 2. SANITARY FACILITIES: PAY SANITARY SERVICE USE CHARGE FOR TEMPORARY TOILETS, WASH FACILITIES, AND DRINKING WATER FOR USE OF CONSTRUCTION PERSONNEL. 3. ELECTRIC SERVICE: COMPLY WITH NECA, NEMA, AND UL STANDARDS AND REGULATIONS FOR TEMPORARY ELECTRIC SERVICE. INSTALL SERVICE TO COMPLY WITH 2007 NEC. 4. TEMPORARY USE OF PERMANENT FACILITIES: INSTALLER OF EACH PERMANENT SERVICE SHALL ASSUME RESPONSIBILITY FOR OPERATION, MAINTENANCE, AND PROTECTION OF EACH PERMANENT SERVICE DURING ITS USE AS A CONSTRUCTION FACILITY BEFORE OWNER'S ACCEPTANCE, REGARDLESS OF PREVIOUSLY ASSIGNED RESPONSIBILITIES. 5. FIRE EXTINGUISHERS: PORTABLE, UL RATED; WITH CLASS AND EXTINGUISHING AGENT AS REQUIRED BY LOCATIONS AND CLASSES OF FIRE EXPOSURES. 6. VENTILATION AND HUMIDITY CONTROL: INSTALL TEMPORARY VENTILATION REQUIRED BY CONSTRUCTION ACTIVITIES FOR CURING OR DRYING OF COMPLETED INSTALLATIONS OR FOR PROTECTING INSTALLED CONSTRUCTION FROM ADVERSE EFFECTS OF HIGH HUMIDITY. SELECT EQUIPMENT THAT WILL NOT HAVE A HARMFUL EFFECT ON COMPLETED INSTALLATIONS OR ELEMENTS BEING INSTALLED. COORDINATE VENTILATION REQUIREMENTS TO PRODUCE AMBIENT CONDITION REQUIRED AND MINIMIZE ENERGY CONSUMPTION. 7. EXISTING STAIR USAGE (IF ANY): USE OF OWNER'S EXISTING STAIRS WILL BE PERMITTED, AS LONG AS STAIRS ARE CLEANED AND MAINTAINED IN A CONDITION ACCEPTABLE TO OWNER. AT SUBSTANTIAL COMPLETION, RESTORE STAIRS TO CONDITION EXISTING BEFORE INITIAL USE. 8. PROVIDE PROTECTIVE COVERINGS, BARRIERS, DEVICES, SIGNS, OR OTHER PROCEDURES TO PROTECT STAIRS AND TO MAINTAIN MEANS OF EGRESS IF, DESPITE SUCH PROTECTION, STAIRS BECOME DAMAGED. RESTORE DAMAGED AREAS SO NO EVIDENCE REMAINS OF CORRECTION WORK. 9. TEMPORARY USE OF PERMANENT STAIRS: COVER FINISHED, PERMANENT STAIRS WITH PROTECTIVE COVERING OF PLYWOOD OR SIMILAR MATERIAL SO FINISHES WILL BE UNDAAMAGED AT TIME OF ACCEPTANCE. 10. TEMPORARY PARTITIONS: PROVIDE FLOOR-TO-CEILING DUSTPROOF PARTITIONS TO LIMIT DUST AND DIRT MIGRATION AND TO SEPARATE AREAS OCCUPIED BY OWNER AND TENANTS FROM FUMES AND NOISE. 11. CONSTRUCT DUSTPROOF PARTITIONS WITH GYPSUM WALLBOARD WITH JOINTS TAPED ON OCCUPIED SIDE, AND FIRE-RETARDANT PLYWOOD ON CONSTRUCTION OPERATIONS SIDE. 12. CONSTRUCT DUSTPROOF PARTITIONS WITH 2 LAYERS OF 3-MIL POLYETHYLENE SHEET ON EACH SIDE. COVER FLOOR WITH 2 LAYERS OF 3-MIL POLYETHYLENE SHEET, EXTENDING SHEETS 18 INCHES UP THE SIDEWALLS. OVERLAP AND TAPE FULL LENGTH OF JOINTS. COVER FLOOR WITH FIRE-RETARDANT PLYWOOD. 13. CONSTRUCT VESTIBULE AND AIRLOCK AT EACH ENTRANCE THROUGH TEMPORARY PARTITION WITH NOT LESS THAN 48 INCHES BETWEEN DOORS. MAINTAIN WATER-DAMPENED FOOT MATS IN VESTIBULE. 14. INSULATE PARTITIONS TO PROVIDE NOISE PROTECTION TO OCCUPIED AREAS. 15. SEAL JOINTS AND PERIMETER EQUIP. PARTITIONS WITH DUSTPROOF DOORS AND SECURITY LOCKS. 16. PROTECT AIR-HANDLING EQUIPMENT. 17. WEATHER STRIP OPENINGS. 18. PROVIDE WALK-OFF MATS AT EACH ENTRANCE THROUGH TEMPORARY PARTITION.																	
	END OF SECTION 015000																	
	SECTION 016000 - PRODUCT REQUIREMENTS 1. SUBSTITUTION REQUESTS: SUBMIT 4 COPIES OF EACH REQUEST FOR CONSIDERATION. IDENTIFY PRODUCT OR FABRICATION OR INSTALLATION REQUESTED TO REFLECT EACH REQUEST. PROVIDE SPECIFICATION SECTION NUMBER AND TITLE AND DRAWING NUMBERS AND TITLES. 2. COMPATIBILITY OF OPTIONS: IF CONTRACTOR IS GIVEN OPTION OF SELECTING BETWEEN TWO OR MORE PRODUCTS FOR USE ON PROJECT, PRODUCT SELECTED SHALL BE COMPATIBLE WITH PRODUCTS PREVIOUSLY SELECTED, EVEN IF PREVIOUSLY SELECTED PRODUCTS WERE ALSO OPTIONS. 3. IF A DISPUTE ARISES BETWEEN CONTRACTORS OVER CONCURRENTLY SELECTABLE BUT INCOMPATIBLE PRODUCTS, ARCHITECT WILL DETERMINE WHICH PRODUCTS SHALL BE USED. 4. PRODUCT: WHERE SPECIFICATIONS NAME A SINGLE PRODUCT AND MANUFACTURER, PROVIDE THE NAMED PRODUCT THAT COMPLIES WITH REQUIREMENTS. 5. MANUFACTURERS: WHERE SPECIFICATIONS INCLUDE A LIST OF MANUFACTURERS' NAMES, PROVIDE A PRODUCT BY ONE OF THE MANUFACTURERS LISTED THAT COMPLIES WITH REQUIREMENTS. 6. BASIS-OF-DESIGN PRODUCT: WHERE SPECIFICATIONS NAME A PRODUCT AND INCLUDE A LIST OF MANUFACTURERS, PROVIDE THE SPECIFIED PRODUCT OR AN EQUAL PRODUCT BY ONE OF THE OTHER NAMED MANUFACTURERS. DRAWINGS AND SPECIFICATIONS INDICATE SIZES, PROFILES, DIMENSIONS, AND OTHER CHARACTERISTICS THAT ARE BASED ON THE PRODUCT NAMED. COMPLY WITH "OR EQUAL." 7. OR EQUAL: WHERE PRODUCTS ARE SPECIFIED BY NAME AND ACCOMPANIED BY THE TERM "OR EQUAL" OR "OR APPROVED EQUAL" OR "OR APPROVED," COMPLY WITH SUBSTITUTION REQUIREMENTS. 8. VISUAL MATCHING SPECIFICATION: WHERE SPECIFICATIONS REQUIRE MATCHING AN ESTABLISHED SAMPLE, SELECT A PRODUCT THAT COMPLIES WITH REQUIREMENTS AND MATCHES ARCHITECT'S SAMPLE. ARCHITECT'S DECISION WILL BE FINAL ON WHETHER A PROPOSED PRODUCT MATCHES. 9. VISUAL SELECTION: WHERE SPECIFICATIONS INCLUDE THE PHRASE "AS SELECTED FROM MANUFACTURER'S COLORS, PATTERNS, TEXTURES" OR A SIMILAR PHRASE, SELECT A PRODUCT THAT COMPLIES WITH OTHER SPECIFIED REQUIREMENTS. 10. TIMING: ARCHITECT WILL CONSIDER REQUESTS FOR SUBSTITUTION IF RECEIVED WITHIN 35 DAYS AFTER THE NOTICE TO PROCEED. REQUESTS RECEIVED AFTER THAT TIME MAY BE CONSIDERED OR REJECTED AT DISCRETION OF ARCHITECT.																	
	END OF SECTION 016000																	
	SECTION 017300 - EXECUTION REQUIREMENTS 1. EXISTING CONDITIONS: THE EXISTENCE AND LOCATION OF SITE IMPROVEMENTS, UTILITIES, AND OTHER CONSTRUCTION INDICATED AS EXISTING ARE NOT GUARANTEED BEFORE BEGINNING WORK. INVESTIGATE AND VERIFY THE EXISTENCE AND LOCATION OF MECHANICAL AND ELECTRICAL SYSTEMS AND OTHER CONSTRUCTION AFFECTING THE WORK. 2. BEFORE CONSTRUCTION, VERIFY THE LOCATION AND POINTS OF CONNECTION OF UTILITY SERVICES. 3. EXISTING UTILITIES: THE EXISTENCE AND LOCATION OF UNDERGROUND AND OTHER UTILITIES AND CONSTRUCTION INDICATED AS EXISTING ARE NOT GUARANTEED. 4. ACCEPTANCE OF CONDITIONS: EXAMINE SUBSTRATES, AREAS, AND CONDITIONS, WITH INSTALLER OR APPLICATOR PRESENT WHERE INDICATED, FOR COMPLIANCE WITH REQUIREMENTS FOR INSTALLATION TOLERANCES AND OTHER CONDITIONS AFFECTING PERFORMANCE. RECORD OBSERVATIONS. 5. VERIFY COMPATIBILITY WITH AND SUITABILITY OF SUBSTRATES, INCLUDING COMPATIBILITY WITH EXISTING FINISHES OR PRIMERS. 6. EXAMINE ROUGHING-IN FOR MECHANICAL AND ELECTRICAL SYSTEMS TO VERIFY ACTUAL LOCATIONS OF CONNECTIONS BEFORE EQUIPMENT AND FIXTURE INSTALLATION. 7. PROCEED WITH INSTALLATION ONLY AFTER UNSATISFACTORY CONDITIONS HAVE BEEN CORRECTED. PROCEEDING WITH THE WORK INDICATES ACCEPTANCE OF SURFACES AND CONDITIONS. 8. FIELD MEASUREMENTS: TAKE FIELD MEASUREMENTS AS REQUIRED TO FIT THE WORK PROPERLY. RECHECK MEASUREMENTS BEFORE INSTALLING EACH PRODUCT. WHERE PORTIONS OF THE WORK ARE INDICATED TO FIT TO OTHER CONSTRUCTION, VERIFY DIMENSIONS OF OTHER CONSTRUCTION BY FIELD MEASUREMENTS BEFORE FABRICATION. COORDINATE FABRICATION SCHEDULE WITH CONSTRUCTION PROGRESS TO AVOID DELAYING THE WORK. 9. SPACE REQUIREMENTS: VERIFY SPACE REQUIREMENTS AND DIMENSIONS OF ITEMS SHOWN DIAGRAMMATICALLY ON DRAWINGS. 10. REVIEW OF CONTRACT DOCUMENTS AND FIELD CONDITIONS: IMMEDIATELY ON DISCOVERY OF THE NEED FOR CLARIFICATION OF THE CONTRACT DOCUMENTS, SUBMIT A REQUEST FOR INFORMATION TO ARCHITECT. INCLUDE A DETAILED DESCRIPTION OF PROBLEM ENCOUNTERED, TOGETHER WITH RECOMMENDATIONS FOR CHANGING THE CONTRACT DOCUMENTS. 11. COMPLY WITH MANUFACTURER'S WRITTEN INSTRUCTIONS, AND RECOMMENDATIONS FOR INSTALLING PRODUCTS IN APPLICATIONS INDICATED. 12. INSTALL PRODUCTS AT THE TIME AND UNDER CONDITIONS THAT WILL ENSURE THE BEST POSSIBLE RESULTS. MAINTAIN CONDITIONS REQUIRED FOR PRODUCT PERFORMANCE UNTIL SUBSTANTIAL COMPLETION. 13. CONDUCT CONSTRUCTION OPERATIONS SO NO PART OF THE WORK IS SUBJECTED TO DAMAGING OPERATIONS OR LOADING IN EXCESS OF THAT EXPECTED DURING NORMAL CONDITIONS OF OCCUPANCY. 14. ANCHORS AND FASTENERS: PROVIDE ANCHORS AND FASTENERS AS REQUIRED TO ANCHOR EACH COMPONENT SECURELY IN PLACE, ACCURATELY LOCATED AND ALIGNED WITH OTHER PORTIONS OF THE WORK. 15. MOUNTING HEIGHTS: WHERE MOUNTING HEIGHTS ARE NOT INDICATED, MOUNT COMPONENTS AT HEIGHTS DIRECTED BY ARCHITECT. 16. COORDINATE INSTALLATION OF ANCHORAGES: FURNISH SETTING DRAWINGS, DIRECTIONS, AND INSTRUCTIONS FOR INSTALLING ANCHORAGES. INCLUDE SLEEVES, CONCRETE INSERTS, ANCHOR BOLTS, AND ITEMS WITH INTEGRAL ANCHORS, THAT ARE TO BE EMBEDDED IN CONCRETE OR MASONRY. DELIVER SUCH ITEMS TO PROJECT SITE IN TIME FOR INSTALLATION. 17. JOINTS: MAKE JOINTS OF UNIFORM WIDTH. WHERE JOINT LOCATIONS IN EXPOSED WORK ARE NOT INDICATED, ARRANGE JOINTS FOR THE BEST VISUAL EFFECT. FIT EXPOSED CONNECTIONS TOGETHER TO FORM HAIRLINE JOINTS. 18. WORK AREAS: CLEAN AREAS WHERE WORK IS IN PROGRESS TO THE LEVEL OF CLEANLINESS NECESSARY FOR PROPER EXECUTION OF THE WORK. 19. REMOVE LIQUID SPILLS PROMPTLY. 20. WHERE DUST WOULD IMPAIR PROPER EXECUTION OF THE WORK, BROOM-CLEAN OR VACUUM THE ENTIRE WORK AREA, AS APPROPRIATE. 21. REPAIR OR REMOVE AND REPLACE DEFECTIVE CONSTRUCTION. 22. RESTORE PERMANENT FACILITIES USED DURING CONSTRUCTION TO THEIR SPECIFIED CONDITION. 23. REMOVE AND REPLACE DAMAGED SURFACES THAT ARE EXPOSED TO VIEW IF SURFACES CANNOT BE REPAIRED WITHOUT VISIBLE EVIDENCE OF REPAIR. 24. REPAIR COMPONENTS THAT DO NOT OPERATE PROPERLY. REMOVE AND REPLACE OPERATING COMPONENTS THAT CANNOT BE REPAIRED. 25. REMOVE AND REPLACE CHIPPED, SCRATCHED, AND BROKEN GLASS OR REFLECTIVE SURFACES.																	
	END OF SECTION 017300																	
	SECTION 017419 - CONSTRUCTION WASTE MANAGEMENT 1. DEVELOP WASTE MANAGEMENT PLAN THAT RESULTS IN END-OF-PROJECT RATES FOR SALVAGE/RECYCLING OF 50 PERCENT BY WEIGHT OF TOTAL WASTE GENERATED BY THE WORK, NOT A REQUIREMENT, BUT A GOAL FOR SUSTAINABLE DESIGN. NO EXTRA COST SHOULD INCUR TO OWNER. 2. REGULATORY REQUIREMENTS: COMPLY WITH HAULING AND DISPOSAL REGULATIONS OF AUTHORITIES HAVING JURISDICTION. 3. SITE ACCESS AND TEMPORARY CONTROLS: CONDUCT WASTE MANAGEMENT OPERATIONS TO ENSURE MINIMUM INTERFERENCE WITH ROADS, STREETS, WALKS, WALKWAYS, AND OTHER ADJACENT OCCUPIED AND USED FACILITIES. 4. DESIGNATE AND LABEL SPECIFIC AREAS ON PROJECT SITE NECESSARY FOR SEPARATING MATERIALS THAT ARE TO BE SALVAGED, RECYCLED, REUSED, DONATED, AND SOLD. 5. SALVAGED ITEMS FOR REUSE IN THE WORK: INSTALL SALVAGED ITEMS TO COMPLY WITH INSTALLATION REQUIREMENTS FOR NEW MATERIALS AND SUBSTITUTIONS. PROVIDE CONTAINERS FOR SALVAGED MATERIALS. PROVIDE MISCELLANEOUS MATERIALS NECESSARY TO MAKE ITEMS FUNCTIONAL FOR USE INDICATED. 6. SALVAGED ITEMS FOR SALE AND DONATION: NOT PERMITTED ON PROJECT SITE. 7. SALVAGED ITEMS FOR OWNER'S USE: STORE ITEMS IN A SECURE AREA UNTIL DELIVERY TO OWNER. 8. DOORS AND HARDWARE: BRACE OPEN END OF DOOR FRAMES. EXCEPT FOR REMOVING DOOR CLOSERS, LEAVE DOOR HARDWARE ATTACHED TO DOORS. 9. EXCEPT PAPER AND BEVERAGE CONTAINERS USED BY ON-SITE WORKERS. 10. RECYCLE FOR ITEMS OR MATERIALS TO BE SALVAGED, RECYCLED, OR OTHERWISE REUSED, REMOVE WASTE MATERIALS FROM PROJECT SITE AND LEGALLY DISPOSE OF THEM IN A LANDFILL OR INCINERATOR ACCEPTABLE TO AUTHORITIES HAVING JURISDICTION. 11. EXCEPT AS OTHERWISE SPECIFIED, DO NOT ALLOW WASTE MATERIALS THAT ARE TO BE DISPOSED OF ACCUMULATE ON-SITE. 12. REMOVE AND TRANSPORT DEBRIS IN A MANNER THAT WILL PREVENT SPILLAGE ON ADJACENT SURFACES AND AREAS. 13. BURNING: DO NOT BURN WASTE MATERIALS. 14. DISPOSAL: TRANSPORT WASTE MATERIALS OFF OWNER'S PROPERTY AND LEGALLY DISPOSE OF THEM.																	
	END OF SECTION 017419																	
	SECTION 017700 - CLOSEOUT PROCEDURES 1. SUBSTANTIAL COMPLETION INSPECTION: SUBMIT A WRITTEN REQUEST FOR FINAL INSPECTION PROCESS FOR ACCEPTANCE. ON RECEIPT OF REQUEST, ARCHITECT EITHER PROCEED WITH INSPECTION PROCESS OR NOTIFY CONTRACTOR OF UNFULFILLED REQUIREMENTS. ARCHITECT WILL PREPARE A FINAL CERTIFICATE FOR PAYMENT AFTER INSPECTION OR WILL NOTIFY CONTRACTOR OF CONSTRUCTION THAT MUST BE COMPLETED OR CORRECTED BEFORE																	
	END OF SECTION 017700																	
	SECTION 017823 - OPERATION AND MAINTENANCE DATA 1. WHERE OPERATION AND MAINTENANCE DOCUMENTATION INCLUDES INFORMATION ON INSTALLATIONS BY MORE THAN ONE FACTORY-AUTHORIZED SERVICE REPRESENTATIVE, ASSEMBLE AND COORDINATE INFORMATION FURNISHED BY REPRESENTATIVES AND PREPARE MANUALS. 2. LIST OF SYSTEMS AND SUBSYSTEMS: LIST SYSTEMS ALPHABETICALLY, INCLUDE REFERENCES TO OPERATION AND MAINTENANCE MANUALS THAT CONTAIN INFORMATION ABOUT EACH SYSTEM. 3. LIST OF EQUIPMENT: LIST EQUIPMENT FOR EACH SYSTEM, ORGANIZED ALPHABETICALLY BY SYSTEM. FOR PIECES OF EQUIPMENT NOT PART OF SYSTEM, LIST ALPHABETICALLY IN SEPARATE LIST. 4. TABLES OF CONTENTS: INCLUDE A TABLE OF CONTENTS FOR EACH EMERGENCY, OPERATION, AND MAINTENANCE MANUAL. 5. IDENTIFICATION: IN THE DOCUMENTATION DIRECTORY AND IN EACH OPERATION AND MAINTENANCE MANUAL, IDENTIFY EACH SYSTEM, SUBSYSTEM, AND PIECE OF EQUIPMENT WITH SAME DESIGNATION USED IN THE CONTRACT DOCUMENTS. IF NO DESIGNATION EXISTS, ASSIGN A DESIGNATION ACCORDING TO ASHRAE GUIDELINE 4. PREPARATION OF OPERATING AND MAINTENANCE DOCUMENTATION FOR BUILDING SYSTEMS. 6. ORGANIZATION: UNLESS OTHERWISE INDICATED, ORGANIZE EACH MANUAL INTO A SEPARATE SECTION FOR EACH SYSTEM AND SUBSYSTEM, AND A SEPARATE SECTION FOR EACH PIECE OF EQUIPMENT NOT PART OF A SYSTEM. 7. OPERATION AND MAINTENANCE DOCUMENTATION DIRECTORY: PREPARE A SEPARATE MANUAL THAT PROVIDES AN ORGANIZED REFERENCE TO EMERGENCY, OPERATION, AND MAINTENANCE MANUALS. 8. EMERGENCY MANUAL: ASSEMBLE A COMPLETE SET OF EMERGENCY INFORMATION INDICATING PROCEDURES FOR USE BY EMERGENCY PERSONNEL AND BY OWNER'S OPERATING PERSONNEL FOR TYPES OF EMERGENCIES INDICATED. 9. PRODUCT MAINTENANCE MANUAL: ASSEMBLE A COMPLETE SET OF MAINTENANCE DATA INDICATING CARE AND MAINTENANCE OF EACH PRODUCT, MATERIAL, AND FINISH INCORPORATED INTO THE WORK. 10. OPERATION AND MAINTENANCE MANUALS: ASSEMBLE A COMPLETE SET OF OPERATION AND MAINTENANCE DATA INDICATING OPERATION AND MAINTENANCE OF EACH SYSTEM, SUBSYSTEM, AND PIECE OF EQUIPMENT NOT PART OF A SYSTEM.																	
	END OF SECTION 017823																	
	SECTION 017839 - PROJECT RECORD DOCUMENTS 1. RECORD PRINTS: MAINTAIN ONE SET OF BLUE- OR BLACK-LINE WHITE PRINTS OF THE CONTRACT DRAWINGS AND SHOP DRAWINGS. MARK RECORD PRINTS TO SHOW THE ACTUAL INSTALLATION WHERE INSTALLATION VARIES FROM THAT SHOWN ORIGINALLY. REQUIRE INDIVIDUAL OR ENTITY WHO OBTAINED RECORD DATA, WHETHER INDIVIDUAL OR ENTITY IS INSTALLER, SUBCONTRACTOR, OR SIMILAR ENTITY, TO PREPARE THE MARKED-UP RECORD PRINTS. 2. RECORD SPECIFICATION: MARK SPECIFICATIONS TO INDICATE THE ACTUAL PRODUCT INSTALLATION WHERE INSTALLATION VARIES FROM THAT INDICATED IN SPECIFICATIONS, ADDENDA, AND CONTRACT MODIFICATIONS.																	
	END OF SECTION 017839																	
	SECTION 024119 - SELECTIVE DEMOLITION 1. NOTIFY ARCHITECT OF DISCREPANCIES BETWEEN EXISTING CONDITIONS AND DRAWINGS BEFORE PROCEEDING WITH SELECTIVE DEMOLITION. 2. DEMOLISH AND REMOVE EXISTING CONSTRUCTION ONLY TO THE EXTENT REQUIRED BY NEW CONSTRUCTION AND AS INDICATED. USE METHODS REQUIRED TO COMPLETE THE WORK WITH LIMITATIONS OF GOVERNING REGULATIONS AND AS FOLLOWS: 3. PROCEED WITH SELECTIVE DEMOLITION SYSTEMATICALLY, FROM HIGHER TO LOWER LEVELS, AND FROM EXPOSED TO CONCEALED SURFACES. REMOVE FLOOR OR OTHER BEFORE DISTURBING SUPPORTING MEMBERS ON THE NEXT LOWER LEVEL. 4. NEATLY CUT OPENINGS AND HOLES PLUMB, SQUARE, AND TRUE TO SURFACES. WHERE NECESSARY, PROVIDE REINFORCING BARS TO PREVENT CONSTRUCTION TO REMAIN OR ADJOINING CONSTRUCTION. USE HAND TOOLS OR SMALL POWER TOOLS DESIGNED FOR SAWING OR GRINDING, NOT HAMMERS AND CHIPPERS TO MINIMIZE DISTURBANCE OF ADJACENT SURFACES. TEMPORARILY COVER OPENINGS TO REMAIN. 5. CUT OR DRILL FROM THE EXPOSED OR FINISHED SIDE INTO CONCEALED SURFACES TO AVOID MARRING EXISTING FINISHED SURFACES. 6. DO NOT USE CUTTING TORCHES UNTIL WORK AREA IS CLEARED OF FLAMMABLE AND EXPLOSIVE MATERIALS, SUCH AS GAS AND PIPE. INTERIORS. VERIFY CONDITION AND CONTENTS OF HIDDEN SPACE BEFORE STARTING FLAME-CUTTING OPERATIONS. MAINTAIN WATCH AND PORTABLE FIRE-SUPPRESSION DEVICES DURING FLAME-CUTTING OPERATIONS. 7. MAINTAIN ADEQUATE VENTILATION WHEN USING CUTTING TORCHES. 8. REMOVE DECAYED, VERMIN-INFESTED, OR OTHERWISE DANGEROUS OR UNSUITABLE MATERIALS AND PROMPTLY DISPOSE OF OFF-SITE. 9. REMOVE STRUCTURAL FRAMING MEMBERS AND LOWER TO GROUND BY METHOD SUITABLE TO AVOID FREE FALL AND TO PREVENT GROUND IMPACT OR DUST GENERATION. 10. LOCATE SELECTIVE DEMOLITION EQUIPMENT AND REMOVE DEBRIS AND MATERIALS SO AS NOT TO IMPOSE EXCESSIVE LOADS ON SUPPORTING WALLS, FLOORS, OR FRAMING.																	
	END OF SECTION 024119																	
	SECTION 050000 - METAL FABRICATIONS 1. COORDINATE INSTALLATION OF STEEL WELD PLATES AND ANGLES FOR CASTING SUCH THAT ANGLE IS SPECIFIED IN THIS SECTION BUT REQUIRED FOR WORK OF ANOTHER SECTION. DELIVER SUCH ITEMS TO PROJECT SITE IN TIME FOR INSTALLATION. 2. METAL SURFACES, GENERAL: PROVIDE MATERIALS WITH SMOOTH, FLAT SURFACES, UNLESS OTHERWISE INDICATED. FOR METAL FABRICATIONS EXPOSED TO VIEW IN THE COMPLETED WORK, PROVIDE MATERIALS WITHOUT SEAM MARKS, ROLLER MARKS, ROLLED TRADE NAMES, OR BLEMISHES. 3. STEEL PLATES, SHAPES, AND BARS: ASTM A36. 4. STAINLESS-STEEL SHEET, STRIP, PLATE, AND FLAT BARS: ASTM A666, TYPE 304. 5. STAINLESS-STEEL BARS AND SHAPES: ASTM A276, TYPE 304. 6. STEEL TUBING: ASTM A500, COLL-FORMED STEEL TUBING. 7. STEEL PIPE: ASTM A53, STANDARD WEIGHT (SCHEDULE 40), UNLESS ANOTHER WEIGHT IS INDICATED OR REQUIRED BY STRUCTURAL LOADS. 8. FASTENERS: UNLESS OTHERWISE INDICATED, PROVIDE TYPE 304 STAINLESS-STEEL FASTENERS FOR EXTERIOR USE AND ZINC-PLATED FASTENERS WITH COATING COMPLIANT WITH ASTM B633, CLASS F2/Zn5, AT EXTERIOR WALLS. PROVIDE STAINLESS-STEEL FASTENERS FOR FASTENING WALKWAYS, WALKWAYS, AND OTHER ADJACENT OCCUPIED AND USED FACILITIES. 9. ANCHOR BOLTS: ASTM F1554, GRADE 36. PROVIDE HOT-DIP OR MECHANICALLY DEPOSITED, ZINC-COATED ANCHOR BOLTS WHERE ITEM BEING FASTENED IS INDICATED TO BE GALVANIZED. 10. UNLESS OTHERWISE INDICATED, PROVIDE LEAD- AND CHROMATE-FREE, UNIVERSAL MODIFIED-ALKYD PRIMER COMPLYING WITH MP#79, USE PRIMER CONTAINING PIGMENTS THAT MAKE IT EASILY DISTINGUISHABLE FROM ZINC-RICH PRIMER. 11. GALVANIZING REPAIR PAINT: HIGH-ZINC-DUST-CONTENT PAINT FOR REGALVANIZING WELDS IN STEEL, COMPLYING WITH SSPC-PAINT 20. 12. NONSHRINK, METALLIC GROUT: FACTORY-PACKAGED, FERROUS-AGGREGATE GROUT COMPLYING WITH ASTM C1107, SPECIFICALLY RECOMMENDED BY MANUFACTURER FOR HEAVY-DUTY LOADING APPLICATIONS. 13. SHOP ASSEMBLY: PREASSEMBLE ITEMS IN THE SHOP TO GREATEST EXTENT POSSIBLE. DISASSEMBLE UNITS ONLY AS NECESSARY FOR SHIPPING AND HANDLING. DISASSEMBLE CONNECTIONS THAT MAINTAIN STRUCTURAL VALUE. JOINED PIECES, CLEARLY MARK UNITS FOR REASSEMBLY AND COORDINATED INSTALLATION. 14. CUT, DRILL, PUNCH AND PUNCH METALS CLEANLY AND ACCURATELY. REMOVE BURRS AND EXCESS EDGES. REWORK APPROPRIATELY 1/32 INCH OR LESS UNLESS OTHERWISE INDICATED. REMOVE SHARP OR ROUGH AREAS ON EXPOSED SURFACES. 15. METAL LADDERS: COMPLY WITH ANSI A14.3, UNLESS OTHERWISE INDICATED.																	
	END OF SECTION 050000																	
	SECTION 078413 - PENETRATION FIRESTOPPING 1. FOR PENETRATIONS THROUGH THE FOLLOWING FIRE-RESISTANCE-RATED CONSTRUCTIONS, INCLUDING BOTH EMPTY OPENINGS AND OPENINGS CONTAINING CONSTRUCTION ITEMS, PROVIDE THROUGH-PENETRATION FIRESTOP SYSTEMS THAT ARE PRODUCED AND INSTALLED TO RESIST SPREAD OF FIRE ACCORDING TO REQUIREMENTS INDICATED, RESIST PASSAGE OF SMOKE AND OTHER GASES, AND MAINTAIN ORIGINAL FIRE-RESISTANCE RATING OF CONSTRUCTION PENETRATED. 2. FIRE-RESISTANCE-RATED WALLS INCLUDING FIRE WALLS, FIRE PARTITIONS, FIRE BARRIERS, AND SMOKE BARRIERS.																	
	END OF SECTION 078413																	
	SECTION 092116 - NON-LOAD-BEARING STEEL FRAMING 1. FURNISH PRODUCT DATA FOR EACH TYPE OF PRODUCTS. 2. FIRE-TEST-REPORT CHARACTERISTICS: FOR FIRE-RESISTANCE-RATED ASSEMBLIES THAT INCORPORATE NON-LOAD-BEARING STEEL FRAMING, PROVIDE MATERIALS AND CONSTRUCTION IDENTICAL TO THOSE TESTED IN ASSEMBLY IDENTIFIED ACCORDING TO ASTM E119 BY AN INDEPENDENT TESTING AGENCY. 3. STC-RATED ASSEMBLIES: FOR STC-RATED ASSEMBLIES, PROVIDE MATERIALS AND CONSTRUCTION IDENTICAL TO THOSE TESTED IN ASSEMBLY INDICATED ACCORDING TO ASTM E90 AND CLASSIFIED ACCORDING TO ASTM E413 BY AN INDEPENDENT TESTING AGENCY. 4. CONSTRUCTION STANDARDS: CONSTRUCTION NOT ON DRAWINGS OR REFERENCED SHALL BE AS DETAILED IN TECHNICAL LIBRARY BY SSMA TECHNICAL SPECIFICATIONS. 5. DEFLECTION LIMITS: MAXIMUM DEFLECTION OF FOLLOWING AT 5 PSF: 6. GYPSUM BOARD ASSEMBLIES: L/240. 7. CERAMIC TILE: L/360. 8. NON-LOAD-BEARING STEEL FRAMING: CALIFORNIA EXPANDED METAL PRODUCTS COMPANY (CEMCO), CLARK STEEL FRAMING SYSTEMS, CONSOLIDATED SYSTEMS, INC., DIETRICH INDUSTRIES, INC., WESTERN METAL LATH & STEEL FRAMING SYSTEMS, OR EQUAL. 9. FRAMING MEMBERS, GENERAL: COMPLY WITH ASTM C754 FOR CONDITIONS INDICATED. 10. STEEL SHEET COMPONENTS: COMPLY WITH ASTM C645 REQUIREMENTS FOR METAL SHEET. 11. PROTECTIVE COATING: ASTM A653, G40, HOT-DIP GALVANIZED ZINC COATING, UNLESS OTHERWISE INDICATED. 12. TIE WIRE: ASTM A641, CLASS 1 ZINC COATING, SOFT TEMPER, 18 GAUGE MINIMUM. 13. ZINC-COATED, CARBON-STEEL WIRE HANGER: ASTM A641, CLASS 1 ZINC COATING, SOFT TEMPER, SELECT WIRE DIAMETER SO ITS STRESS AT 3 TIMES HANGER DESIGN LOAD (ASTM C635, TABLE 1, "DIRECT HUNG") WILL BE LESS THAN YIELD STRESS OF WIRE, BUT PROVIDE NOT LESS THAN 0.06 INCH (1/2 GAUGE) AND AS REQUIRED TO FIT INSULATION THICKNESS INDICATED. 14. CARRYING CHANNELS: COLD-ROLLED, COMMERCIAL-STEEL SHEET WITH A BASE-METAL THICKNESS OF 0.0538 INCH (16 GAUGE) AND MINIMUM 1/2-INCH-WIDE FLANGES. 15. HAT-SHAPED, RIGID FURRING CHANNELS: ASTM C645. 16. RESILIENT FURRING CHANNELS: 1/2-INCH DEEP MEMBERS DESIGNED TO REDUCE SOUND TRANSMISSION. 17. STEEL STUDS AND RUNNERS: ASTM C 645; OF SIZE AND PROPERTIES NECESSARY TO COMPLY WITH ASTM C 754 FOR THE SPACING INDICATED. 18. HAT-SHAPED, RIGID FURRING CHANNELS: ASTM C645. 19. RESILIENT FURRING CHANNELS: 1/2-INCH DEEP MEMBERS DESIGNED TO REDUCE SOUND TRANSMISSION. 20. 2-SHAPED FURRING: WITH SLOTTED OR NONSLOTTED WEB, FACE FLANGE OF 1-1/4 INCHES, WALL ATTACHMENT FLANGE OF 7/8 INCH, THICKNESS AS INDICATED BUT NOT LESS THAN BARE-METAL THICKNESS OF 0.0312 INCH (20 GAUGE), AND AS REQUIRED TO FIT INSULATION THICKNESS INDICATED. 21. END OF SECTION 092116																	
	END OF SECTION 092116																	
	SECTION 099100 - PAINTING 1. FURNISH PRODUCT DATA FOR EACH TYPE OF PRODUCTS. 2. PAINTS: BENJAMIN MOORE, DUNN																	



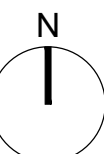
(E) ACCESSIBLE PUBLIC TOILETS
SEE ENLARGED PLAN A1/A111

(E) ACCESSIBLE PUBLIC TELEPHONE SERVICES
PROVIDED AT RECEPTION COUNTER



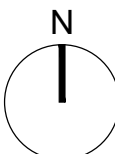
A1 ENLARGED TOILET PLAN

SCALE: 1/4"=1'-0"



A7 FIRST FLOOR ACCESSIBILITY / FIRE & LIFE SAFETY PLAN

SCALE: 1/16"=1'-0"



GENERAL NOTES

- THE FIRE RATING OF THE PARTITIONS IS SHOWN DIAGRAMMATICALLY.
- FOR CONSTRUCTION OF PARTITIONS, SEE FLOOR PLANS AND PARTITION CONSTRUCTION DRAWINGS.
- THESE PLANS DO NOT ATTEMPT TO SHOW ALL FIRE-RATED CEILINGS AND/OR HORIZONTAL PARTITIONS (SUCH AS BOTTOMS OF SHAFT, FOR EXAMPLE) PRESENT IN THE BUILDING. SEE REFLECTED CEILING PLANS AND ENLARGED STAIRS AND ELEVATOR DRAWINGS FOR CONDITIONS NOT SHOWN HERE.
- FOR LOCATION AND TYPE OF FIRE DAMPERS, SEE MECHANICAL DRAWINGS AND SPECIFICATIONS.
- FOR LOCATION OF SMOKE DETECTORS AND OTHER FIRE ALARM DEVICES, SEE ELECTRICAL DRAWINGS OR FIRE ALARM DRAWINGS.

LEGEND

- 1-HOUR RATED SMOKE BARRIER (20 MINUTE RATED OPENINGS)
- 1-HOUR RATED FIRE BARRIER (45 MINUTE RATED OPENINGS)
- 2-HOUR RATED FIRE BARRIER (90 MINUTE RATED OPENINGS)
- EXIT DISCHARGE
- EXIT TO LEVEL BELOW
- EXISTING ACCESSIBLE TOILET, SEE PLAN FOR TYPE
- EXIT ACCESS CORRIDOR 1-HOUR FIRE RATED PARTITIONS & HORIZ. ASSEMBLY (20 MINUTE RATED OPENINGS)

ARCHITECT

Savely
Healthcare Architects
ARCHITECTURE + PLANNING + DESIGN

18008 Sky Park Circle, Suite 290
Irvine, CA 92614
(949) 431-0071

PROJECT

ARROWHEAD REGIONAL
MEDICAL CENTER
400 N. PEPPER AVE.
COLTON, CA 92324

CHAIN LINK FENCE ENCLOSURE-
BEHAVIORAL HEALTH

NO. DATE REVISIONS

PROFESSIONAL SEALS



AGE

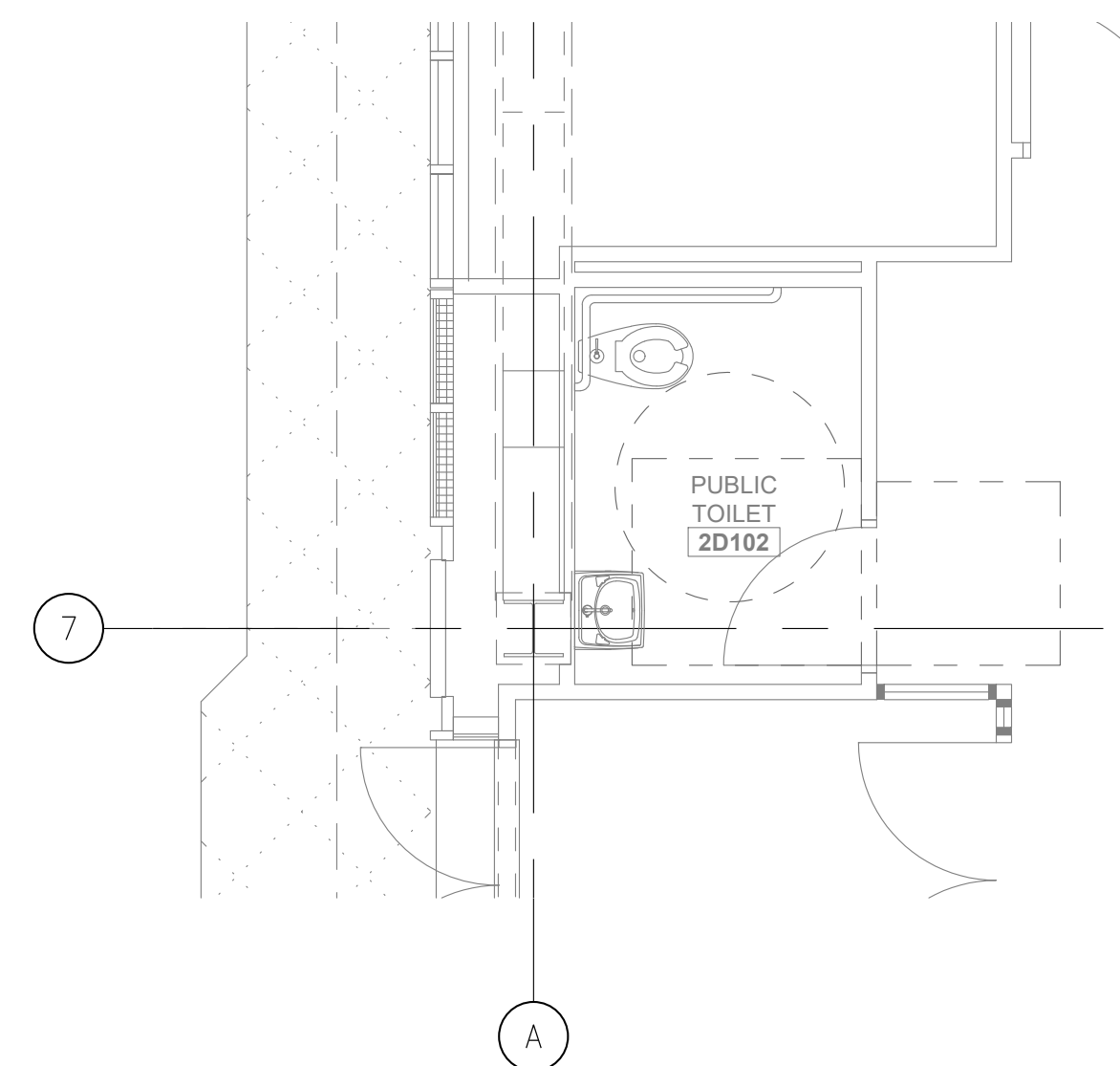
DRAWN BY CHECKED BY DATE
FM GL 11.30.2020

PROJECT NUMBER
SHA # 19327.000
OSHDP # S202245-36-00

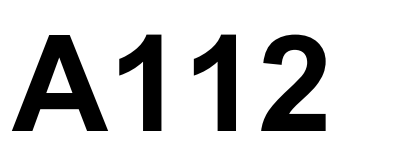
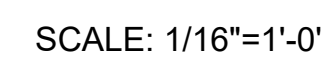
SHEET TITLE
FIRST FLOOR FIRE & LIFE
SAFETY / ACCESSIBILITY PLAN

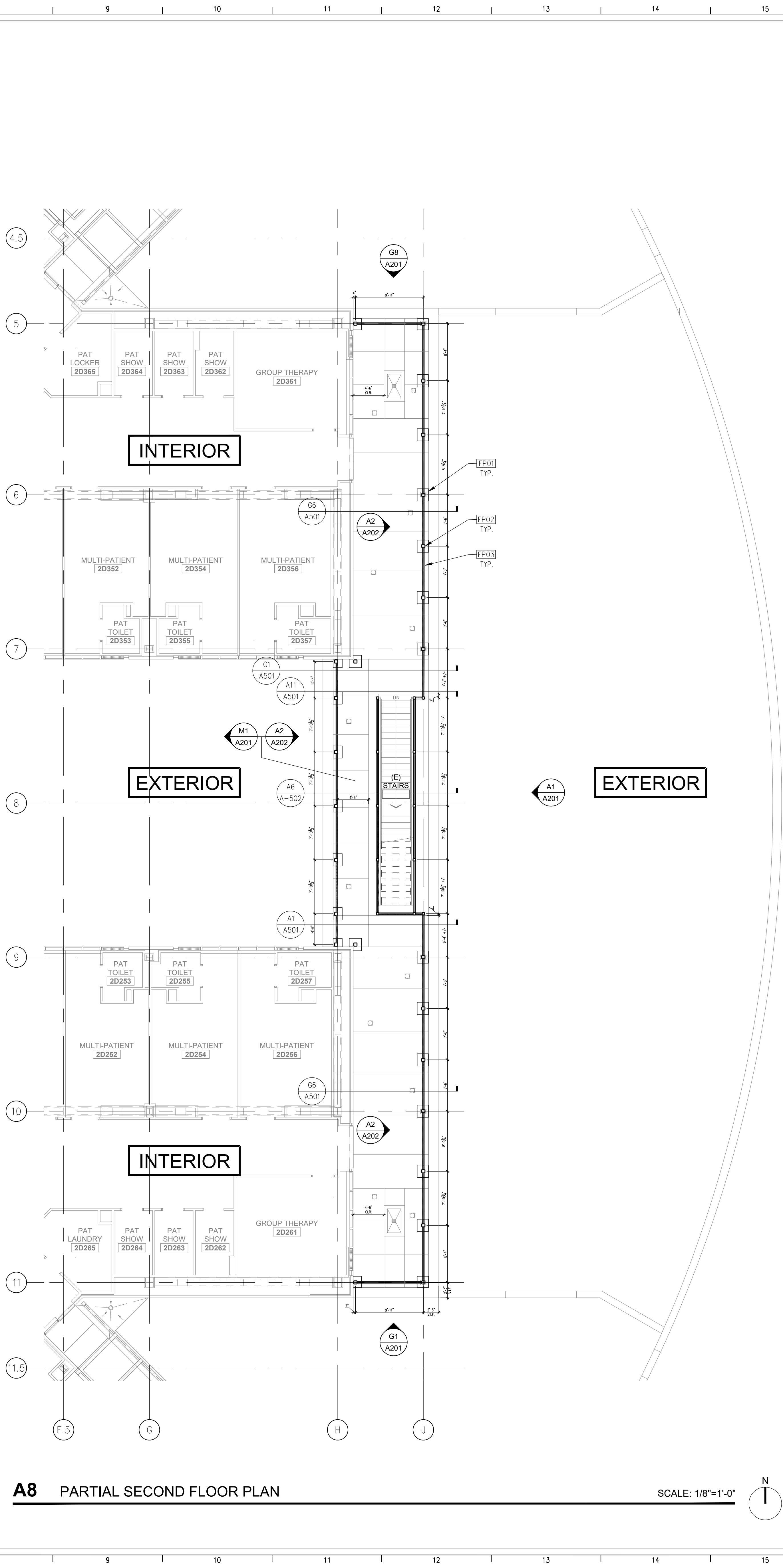
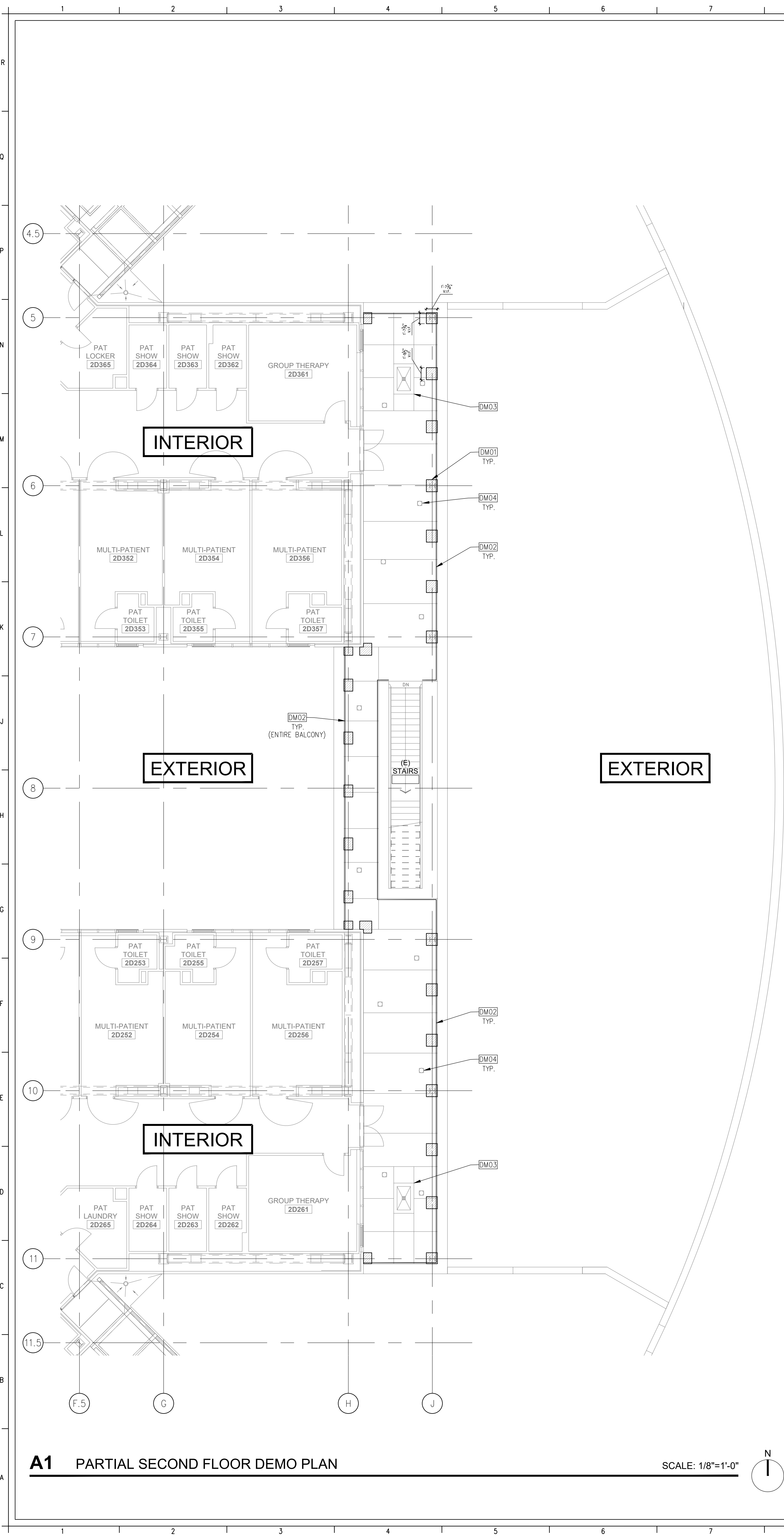
SHEET NUMBER

A111



SCALE: 1/4"=1'-0"





GENERAL NOTES

METAL
STEEL COLUMNS AND BEAMS SHALL BE GALVANIZED AND PAINTED.

DEMOLITION PLAN KEYNOTES

DM01 DEMO CONCRETE AND FLUTE FOR STRUCTURAL HSS COLUMN/POST TO BE WELDED; SEE DETAIL S15101
DM02 DEMO STEEL GUARD RAIL
DM03 (E) PLANTER TO REMAIN
DM04 (E) FLOOR DRAIN TO REMAIN

FLOOR PLAN KEYNOTES

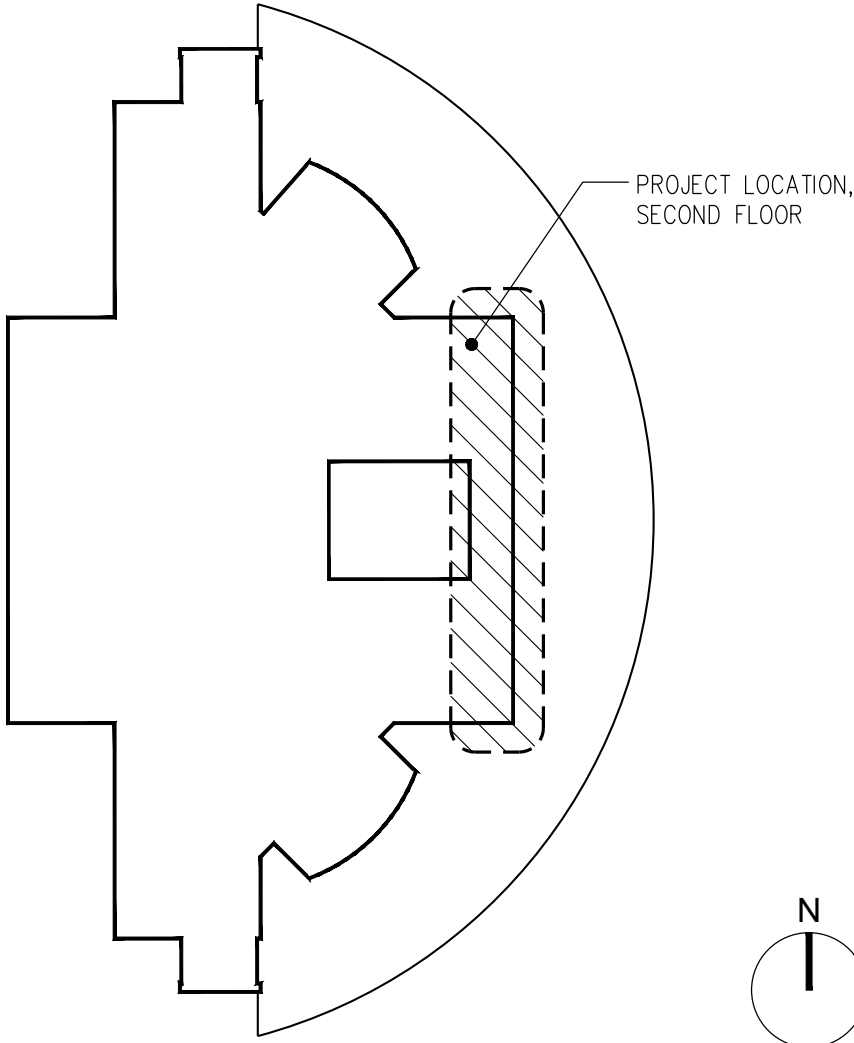
FP01 PATCH AND REPAIR CONCRETE SLAB AND FLUTE; SEE STRUCTURAL DETAIL S15101
FP02 STRUCTURAL HSS COLUMN; SEE STRUCTURAL DETAIL S15101
FP03 CHAIN LINK FENCE PANEL; SWAN FENCE INC. 9 GAUGE ALUMINUM 6061 T 94, 1/2" MINI MESH; REFER TO DETAIL N1A001

LEGEND

(E) NON RATED WALL

(E) DOOR AND FRAME TO REMAIN

KEY PLAN SCALE: N.T.S.



ARCHITECT

Savely Healthcare Architects
ARCHITECTURE + PLANNING + DESIGN

18008 Sky Park Circle, Suite 290
Irvine, CA 92614
(949) 431-0071

PROJECT

ARROWHEAD REGIONAL MEDICAL CENTER
400 N. PEPPER AVE.
COLTON, CA 92324

CHAIN LINK FENCE ENCLOSURE- BEHAVIORAL HEALTH

NO.	DATE	REVISIONS

PROFESSIONAL SEALS



AGENCY APPROVAL

DRAWN BY	CHECKED BY	DATE
FM	GL	11.30.2020

PROJECT NUMBER

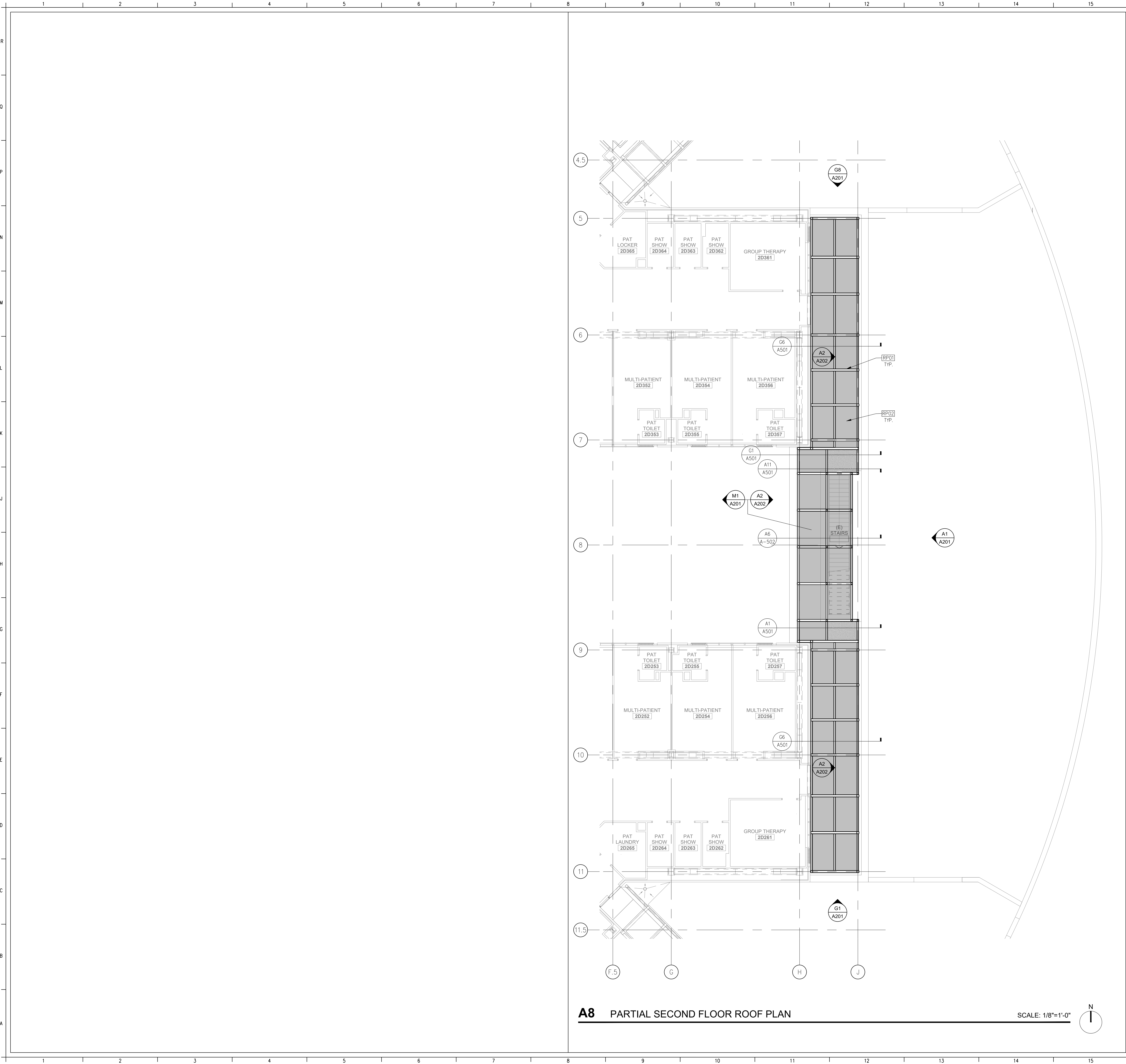
SHA # 19327.000
OSHPD # S202245-36-00

SHEET TITLE

FLOOR PLANS

SHEET NUMBER

A130



A8 PARTIAL SECOND FLOOR ROOF PLAN

SCALE: 1/8"=1'-0"

GENERAL NOTES

METAL:
STEEL COLUMNS AND BEAMS SHALL BE GALVANIZED AND PAINTED.

ROOF PLAN KEYNOTES

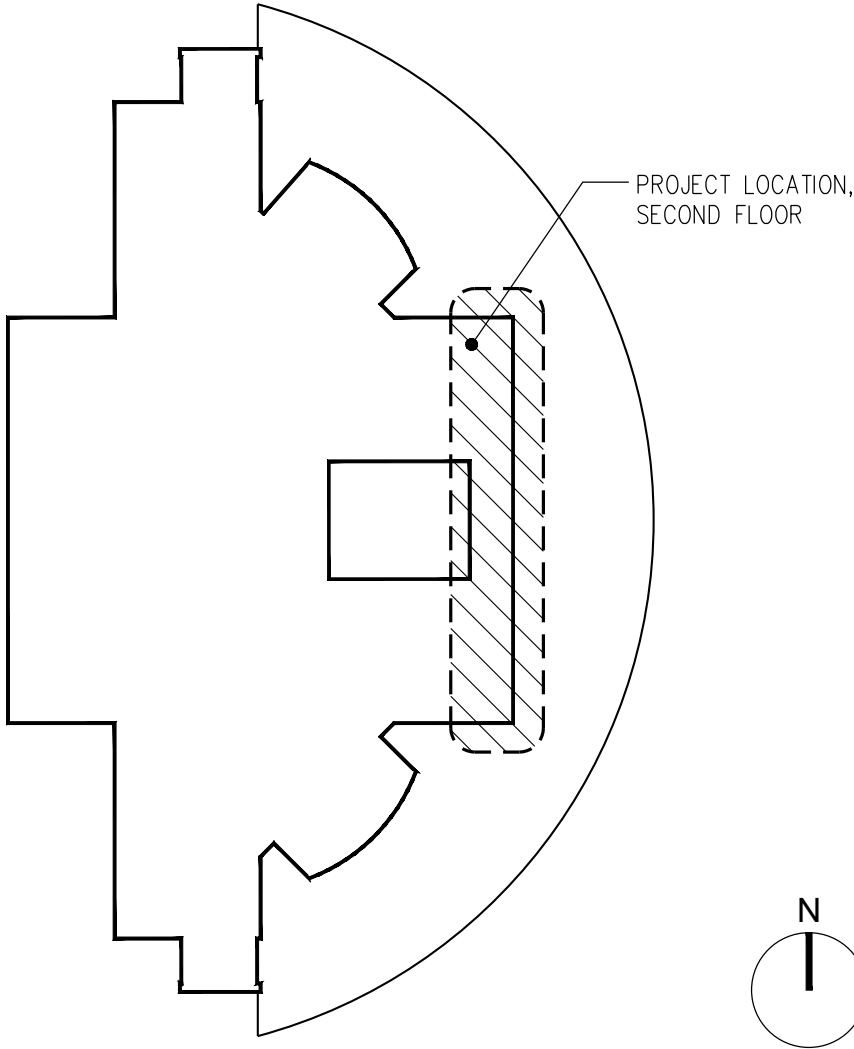
RP01 STRUCTURAL HSS BEAM. SEE STRUCTURAL DETAIL 55101
RP02 ROOF CHAIN LINK FENCE PANEL. SWAN FENCE INC. 3 GAUGE ALUMINUM 6061 T 54, 1/2" MINI-MESH. REFER TO DETAIL N1A501

LEGEND

(E) NON RATED WALL

KEY PLAN

SCALE: N.T.S.



SHA

ARCHITECT

Savely
Healthcare Architects
ARCHITECTURE + PLANNING + DESIGN

18008 Sky Park Circle, Suite 290
Irvine, CA 92614
(949) 431-0071

PROJECT

**ARROWHEAD REGIONAL
MEDICAL CENTER**
400 N. PEPPER AVE.
COLTON, CA 92324

**CHAIN LINK FENCE ENCLOSURE-
BEHAVIORAL HEALTH**

NO. DATE REVISIONS

PROFESSIONAL SEALS



AGENCY APPROVAL

DRAWN BY CHECKED BY DATE
FM GL 11.30.2020

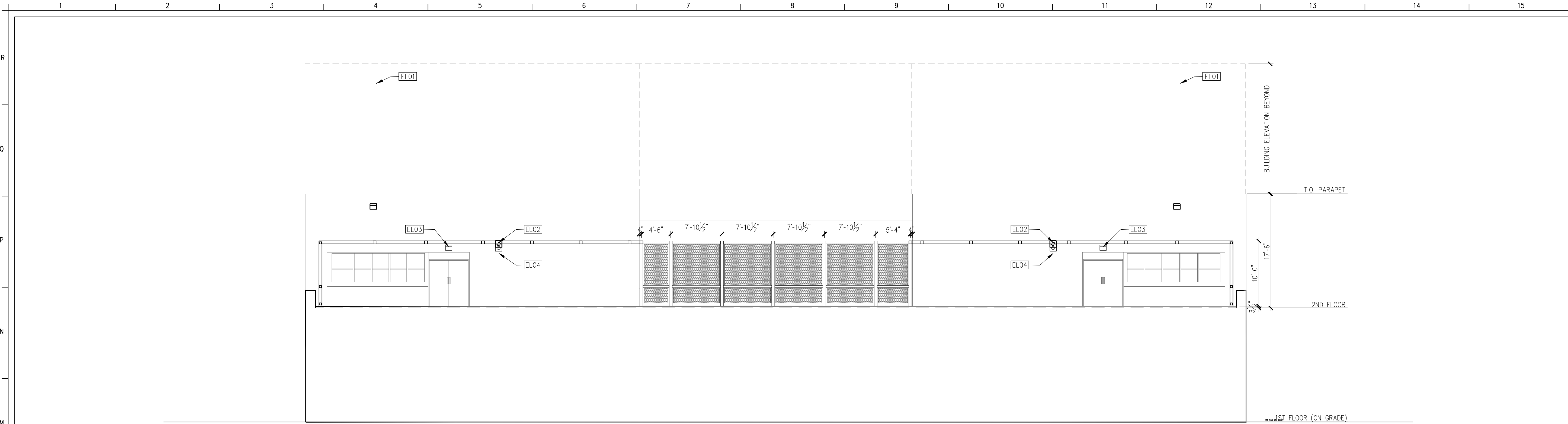
PROJECT NUMBER
SHA # 19327.000
OSHPD # S202245-36-00

SHEET TITLE

ROOF PLAN

SHEET NUMBER

A131



M1 EXTERIOR ELEVATIONS

SCALE: 1/8"=1'-0"



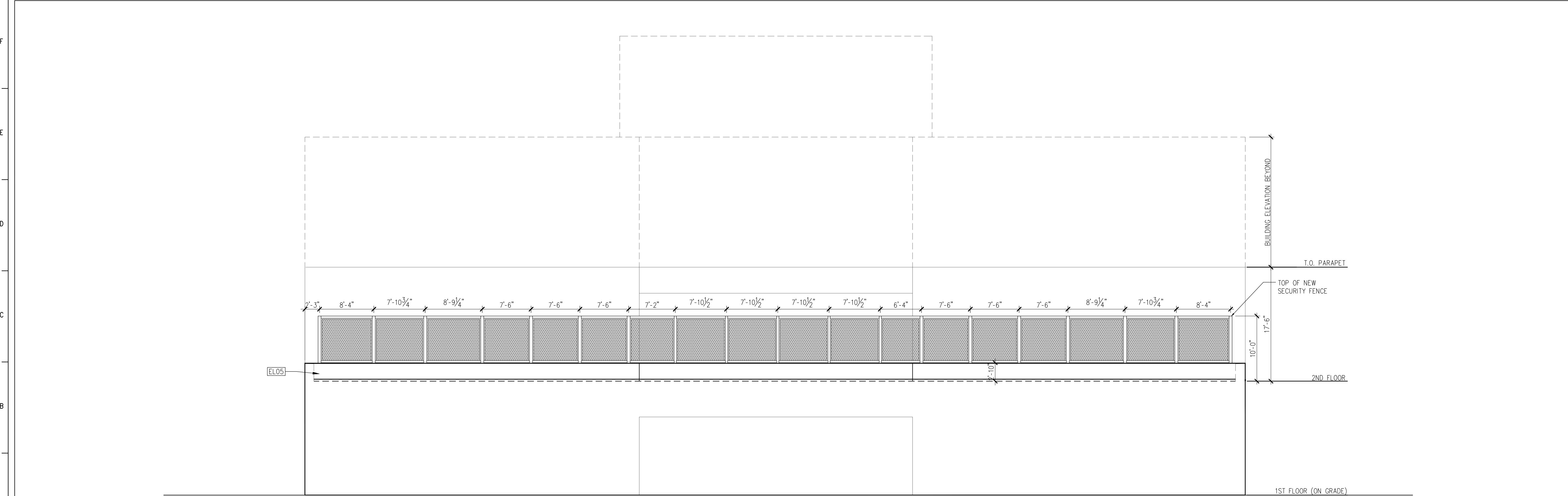
G1 EXTERIOR ELEVATIONS

SCALE: 1/8"=1'-0"



G8 EXTERIOR ELEVATIONS

SCALE: 1/8"=1'-0"



A1 EXTERIOR ELEVATIONS

SCALE: 1/8"=1'-0"

GENERAL NOTES

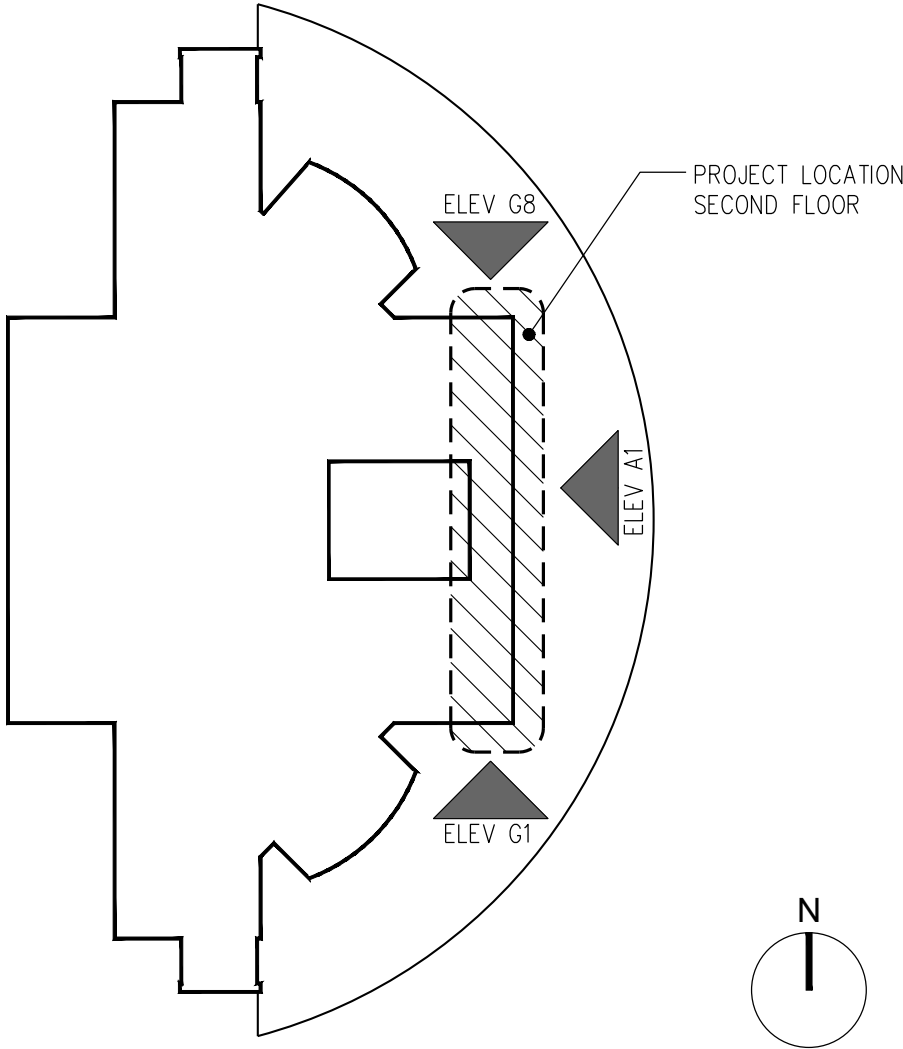
•

KEYNOTES

- EL01 (E) LIGHT FIXTURE TO BE RELOCATED.
- EL02 (E) SPEAKER TO BE RELOCATED.
- EL03 RELOCATED LIGHT FIXTURE
- EL04 RELOCATED SPEAKER
- EL05 (E) PARAPET TO REMAIN

KEY PLAN

SCALE: N.T.S.



SHA

ARCHITECT

Savely Healthcare Architects

ARCHITECTURE + PLANNING + DESIGN

18008 Sky Park Circle, Suite 290
Irvine, CA 92614
(949) 431-0071

PROJECT

ARROWHEAD REGIONAL
MEDICAL CENTER

400 N. PEPPER AVE.
COLTON, CA 92324

CHAIN LINK FENCE ENCLOSURE-
BEHAVIORAL HEALTH

NO. DATE REVISIONS

PROFESSIONAL SEALS



AGENCY APPROVAL

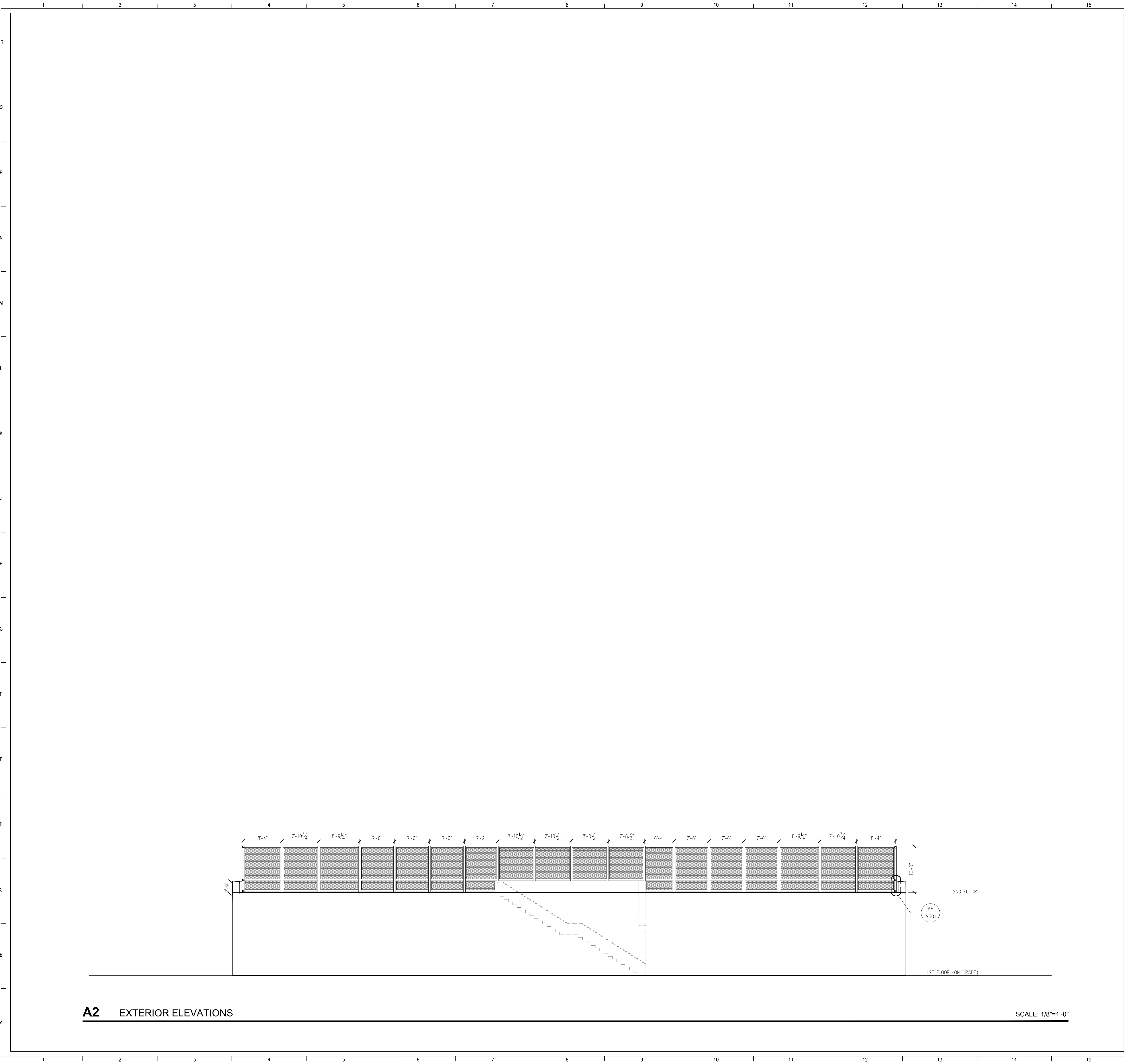
DRAWN BY CHECKED BY DATE
FM GL 11.30.2020

PROJECT NUMBER
SHA # 19327.000
OSHPD # S202245-36-00

SHEET TITLE
EXTERIOR ELEVATIONS

SHEET NUMBER

A201



GENERAL NOTES

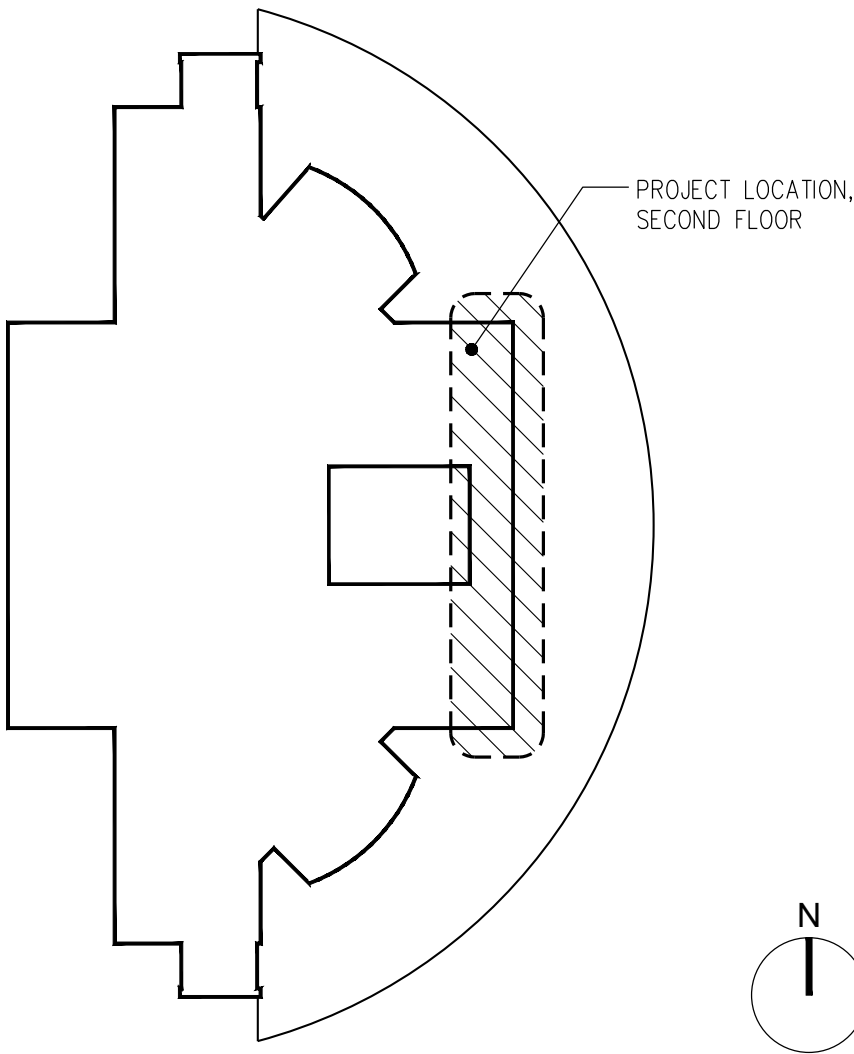
-

KEYNOTES

- EL01 (E) LIGHT FIXTURE TO BE RELOCATED.
EL02 (E) SPEAKER TO BE RELOCATED.
EL03 RELOCATED LIGHT FIXTURE
EL04 RELOCATED SPEAKER

KEY PLAN

SCALE: N.T.S.



ARCHITECT

Savely Healthcare Architects
ARCHITECTURE + PLANNING + DESIGN

18008 Sky Park Circle, Suite 290
Irvine, CA 92614
(949) 431-0071

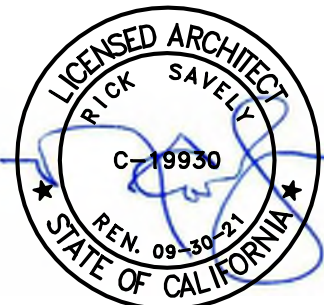
PROJECT

ARROWHEAD REGIONAL MEDICAL CENTER
400 N. PEPPER AVE.
COLTON, CA 92324

CHAIN LINK FENCE ENCLOSURE- BEHAVIORAL HEALTH

NO. DATE REVISIONS

PROFESSIONAL SEALS



AGENCY APPROVAL

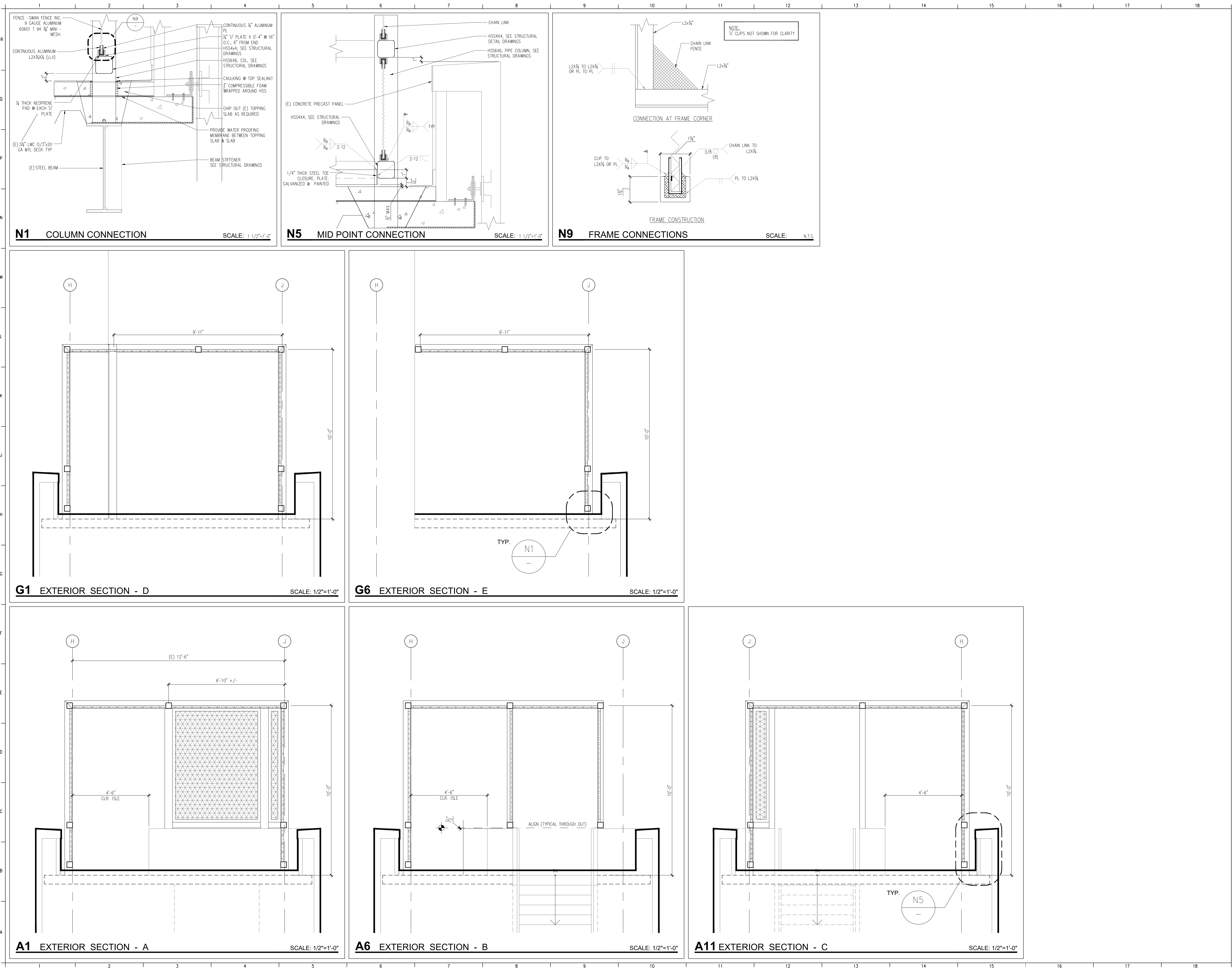
DRAWN BY	CHECKED BY	DATE
FM	GL	11.30.2020

PROJECT NUMBER
SHA # 19327.000
OSHDP # S202245-36-00

SHEET TITLE
EXTERIOR ELEVATIONS

SHEET NUMBER

A202



ARCHITECT

Savely 
Healthcare Architects
ARCHITECTURE + PLANNING + DESIGN

18008 Sky Park Circle, Suite 290
Irvine, CA 92614
(949) 431-0071

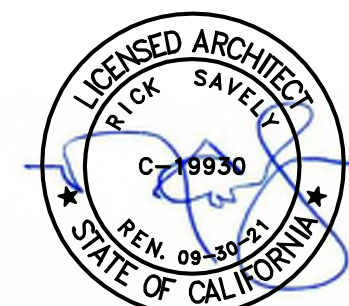
PROJECT

**ARROWHEAD REGIONAL
MEDICAL CENTER**
400 N. PEPPER AVE.
COLTON, CA 92324

**CHAIN LINK FENCE ENCLOSURE-
BEHAVIORAL HEALTH**

NO. DATE REVISIONS

PROFESSIONAL SEALS



AGENCY APPROVAL

DRAWN BY	CHECKED BY	DATE
FM	GL	11.30.2020

PROJECT NUMBER
SHA # 19327.000
OSHPD # S202245-36-00

SHEET TITLE

SECTIONS AND DETAILS

SHEET NUMBER

A501

