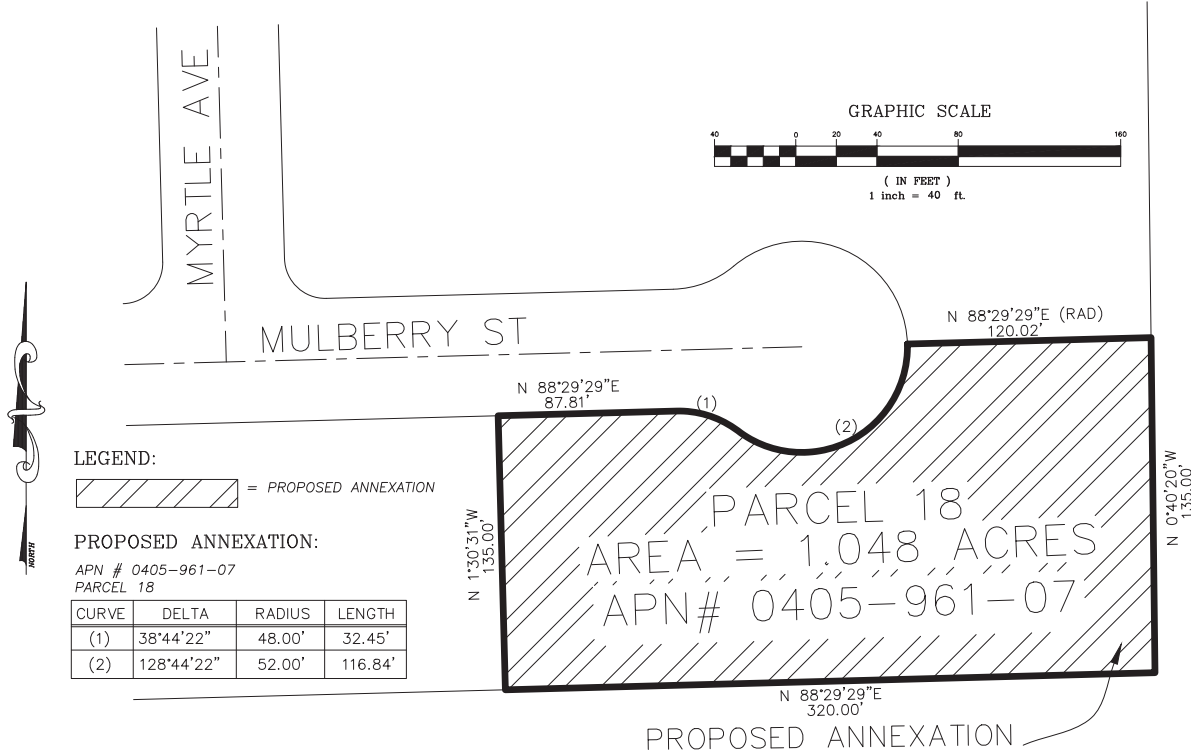
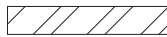


AMENDED ANNEXATION MAP:

PROPOSED BOUNDARIES OF ANNEXATION NO. 204
 COMMUNITY FACILITIES DISTRICT NO. 94-01 (HESPERIA)
 SAN BERNARDINO COUNTY FIRE PROTECTION DISTRICT,
 STATE OF CALIFORNIA



LEGEND:

 = PROPOSED ANNEXATION

PROPOSED ANNEXATION:

APN # 0405-961-07
 PARCEL 18

CURVE	DELTA	RADIUS	LENGTH
(1)	38°44'22"	48.00'	32.45'
(2)	128°44'22"	52.00'	116.84'

SAN BERNARDINO COUNTY FIRE PROTECTION DISTRICT:

THIS ANNEXATION MAP AMENDS THE BOUNDARY MAP FOR COMMUNITY FACILITIES DISTRICT No. 94-01 OF THE SAN BERNARDINO COUNTY FIRE PROTECTION DISTRICT, COUNTY OF SAN BERNARDINO, STATE OF CALIFORNIA, PRIOR RECORDS AT BOOK _____ OF MAPS OF ASSESSMENT AND COMMUNITY FACILITIES DISTRICT, AT PAGE _____ IN THE OFFICE OF THE COUNTY RECORDER FOR SAN BERNARDINO COUNTY, CALIFORNIA.

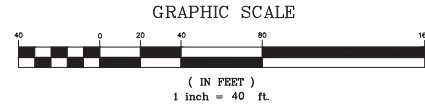
LYNNA MONELL
 SECRETARY TO THE BOARD
 SAN BERNARDINO COUNTY FIRE PROTECTION DISTRICT
 STATE OF CALIFORNIA

FILED IN THE OFFICE OF THE SECRETARY OF THE BOARD OF DIRECTORS OF THE SAN BERNARDINO COUNTY FIRE PROTECTION DISTRICT THIS _____ DAY OF _____, 20____.

LYNNA MONELL
 SECRETARY TO THE BOARD
 SAN BERNARDINO COUNTY FIRE PROTECTION DISTRICT
 STATE OF CALIFORNIA

I HEREBY CERTIFY THAT THE WITHIN MAP SHOWING THE PROPOSED BOUNDARIES OF ANNEXATION NO. _____ OF SAN BERNARDINO COUNTY FIRE PROTECTION DISTRICT COMMUNITY FACILITIES DISTRICT NO. 94-01, STATE OF CALIFORNIA, WAS APPROVED BY THE BOARD OF DIRECTORS OF THE SAN BERNARDINO COUNTY FIRE PROTECTION DISTRICT AT A REGULAR MEETING THEREOF, HELD ON THE _____ DAY OF _____, 20____, BY ITS RESOLUTION NO. _____.

LYNNA MONELL
 SECRETARY TO THE BOARD
 SAN BERNARDINO COUNTY FIRE PROTECTION DISTRICT
 STATE OF CALIFORNIA



ENGINEER'S STATEMENT:

ANNEXATION MAP AND THIS LEGAL DESCRIPTION WAS PREPARED BY ME OR UNDER MY DIRECTION:

RANDOLPH J. COLEMAN
 L.S. #5413, EXPIRATION
 9-30-2024



LEGAL DESCRIPTION:

THE LAND REFERRED TO IN THIS REPORT IS SITUATED IN THE STATE OF CALIFORNIA, COUNTY OF SAN BERNARDINO, AND IS DESCRIBED AS PARCEL 18 OF PARCEL MAP NO. 14234, IN THE CITY OF HESPERIA, COUNTY OF SAN BERNARDINO, STATE OF CALIFORNIA, AS PER PLAT RECORDER IN BOOK 241 OF PARCEL MAPS, PAGE 55-58, INCLUSIVELY, RECORDS OF SAID COUNTY.

SAN BERNARDINO COUNTY RECORDER'S CERTIFICATE:

THIS MAP HAS BEEN FILED UNDER DOCUMENT NUMBER _____, THIS _____ DAY OF _____, 20____, AT _____ IN BOOK _____ OF MAPS OF ASSESSMENT AND COMMUNITY FACILITIES DISTRICTS AT PAGE(S) _____, AT THE REQUEST OF THE SAN BERNARDINO COUNTY FIRE PROTECTION DISTRICT COMMUNITY FACILITIES DISTRICT 94-01 IN THE SAN BERNARDINO COUNTY

CHRIS WILHITE
 ASSESSOR-RECORDER
 SAN BERNARDINO COUNTY

By: _____
 DEPUTY RECORDER