


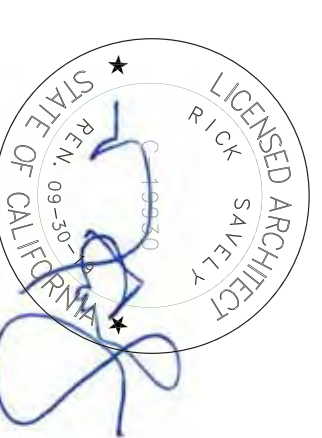
ARCHITECT

Savely 
Healthcare Architects
ARCHITECTURE + PLANNING + DESIGN
18008 Sky Park Circle, Suite 290
Irvine, CA 92614
(949) 431-0071

PROJECT
ARROWHEAD
REGIONAL MEDICAL CENTER
MEDICAL OFFICE BUILDING
400 N. PEPPER AVE.
COLTON, CALIFORNIA 92324
ONCOLOGY-AMBULATORY CLINIC

NO. DATE REVISIONS

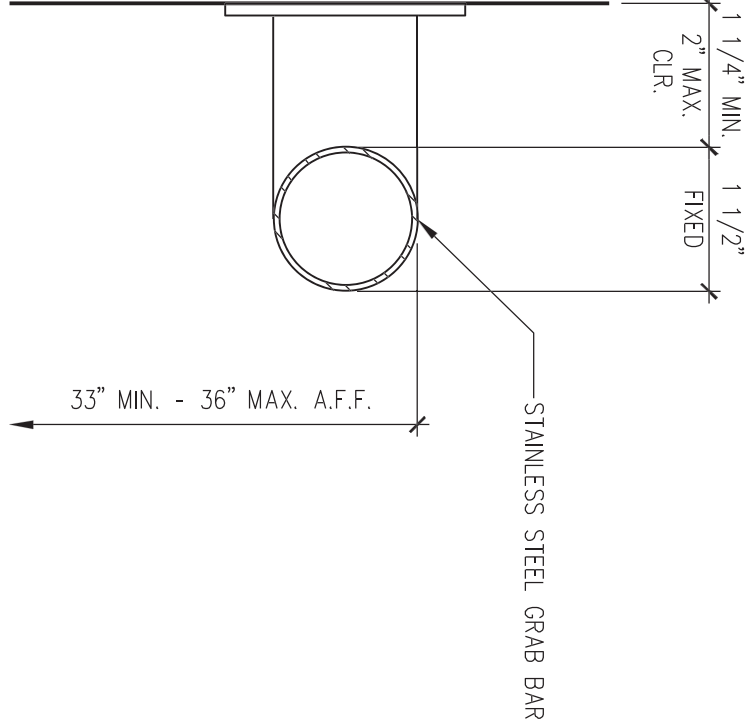
PROFESSIONAL SEALS



AGENCY APPROVAL

Digitally signed by Eric Rodriguez, SE
DN: cn=Eric Rodriguez, SE, o=NV5, Inc, ou=Energy, email=eric.rodriquez@nv5.com, c=US
Reason: Reviewed for Code Compliance.
Date: 2019.06.12 08:55:17 -07'00'

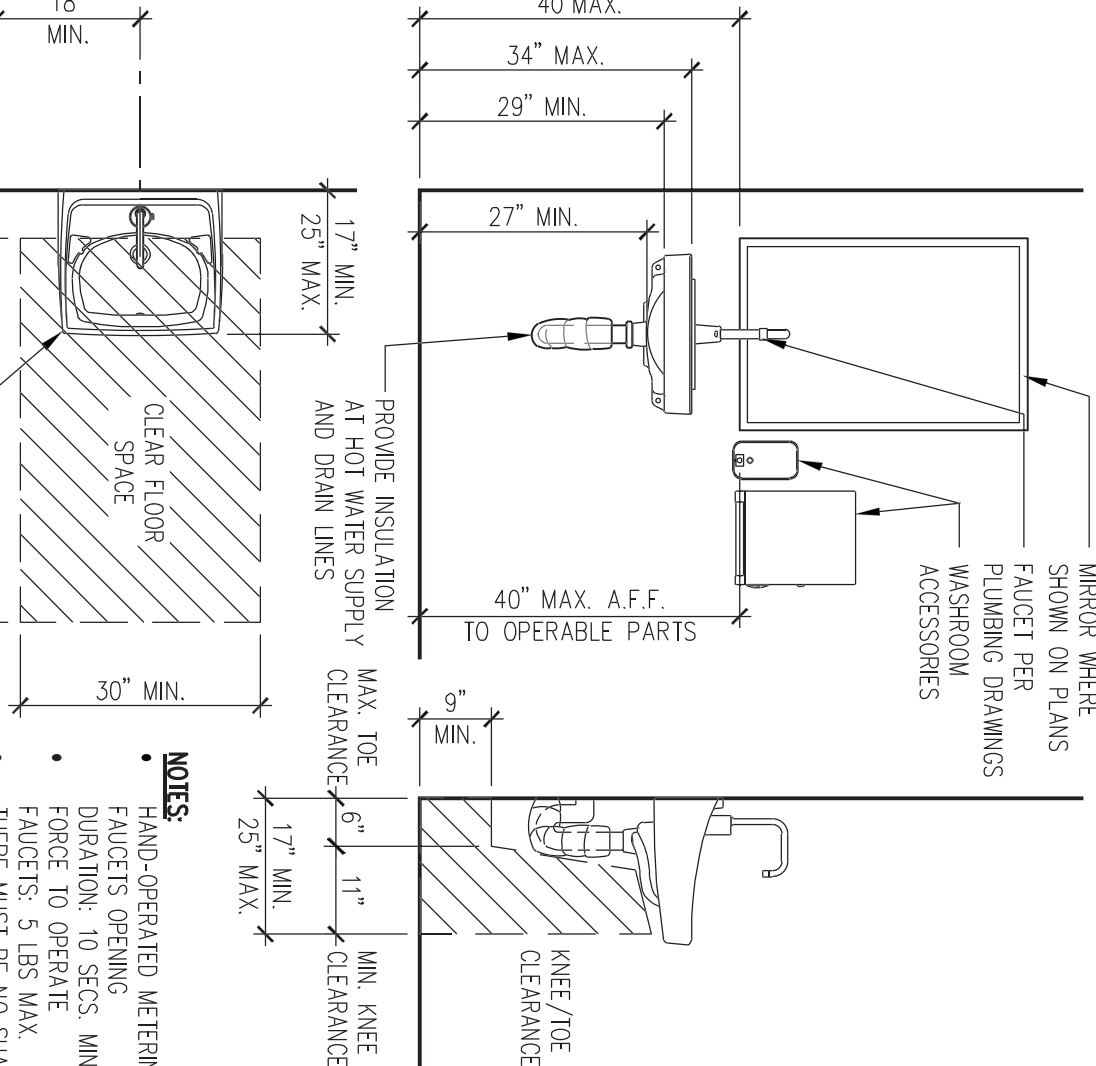
DRAWN BY	GL	CHECKED BY	DATE
EED	GL	02.22.2019	05.23.2019
PROJECT NUMBER	SHA # 18242.100		
SHEET TITLE	TYPICAL DIAGRAMS & DETAILS		
SHEET NUMBER	G002		



E16 GRAB BAR

- NOTES:
- SPACE BETWEEN THE GRAB BAR AND PROCEEDING OBJECTS ABOVE: 12" MIN.
 - GRAB BARS MUST BE INSTALLED IN ANY MANNER THAT DOES NOT OBSTRUCT THE REQUIRED CLEAR FLOOR SPACES.
 - GRAB BARS MUST BE INSTALLED IN A MANNER ADJACENT TO GRAB BARS MUST BE FREE OF SHARP OR ABRASIVE ELEMENTS AND MUST HAVE ROUNDED FITTINGS.
 - GRAB BARS MUST NOT ROTATE WITHIN THEIR STRUCTURAL STRENGTH: 250 LBS.

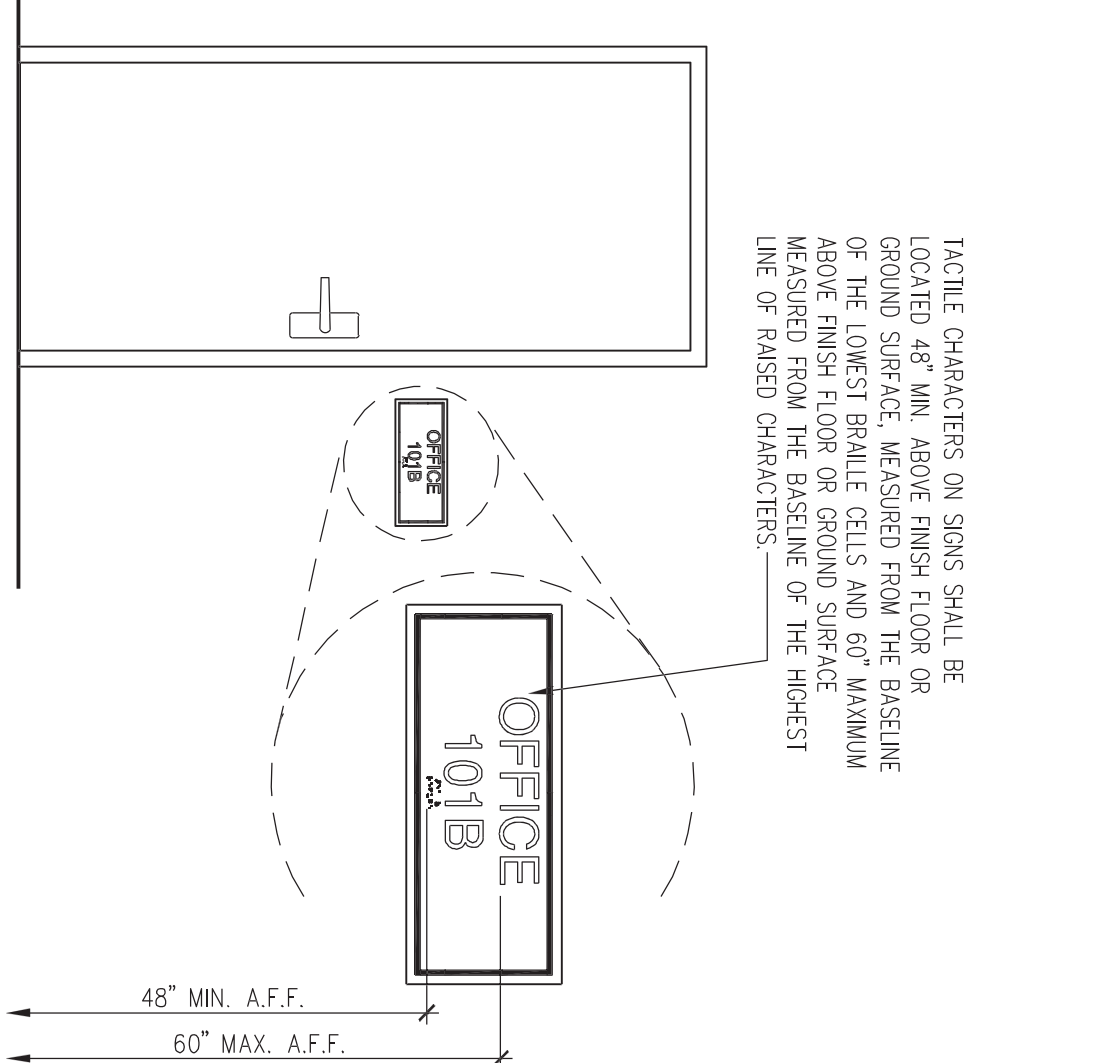
SCALE: 6"=1'-0"



J16 LAVATORY

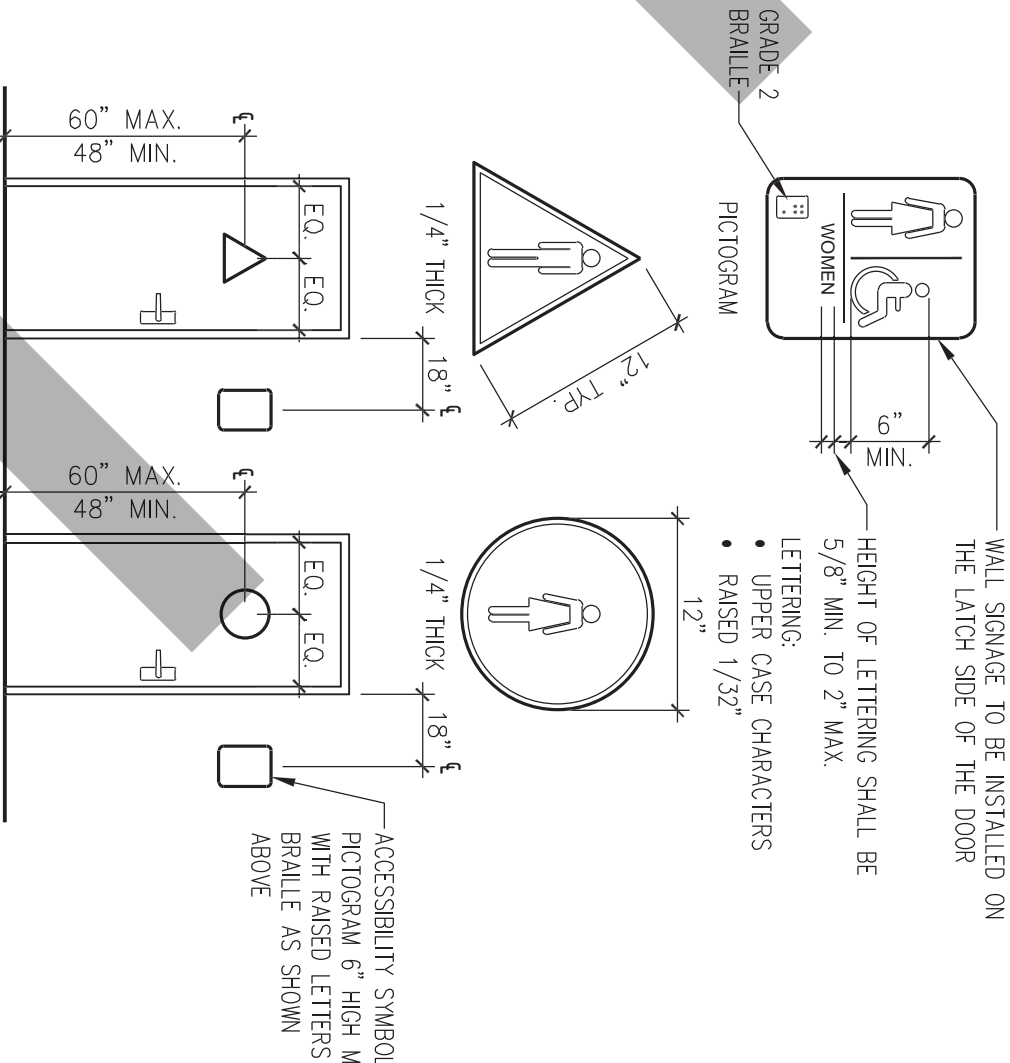
- NOTES:
- HAND-OPERATED WETTING FAUCETS OPENING MIN. FORCE TO OPERATE: 5 LBS MAX.
 - FAUCETS TO BE ADAPTED UNDER LAVATORIES.

SCALE: 1/2"=1'-0"



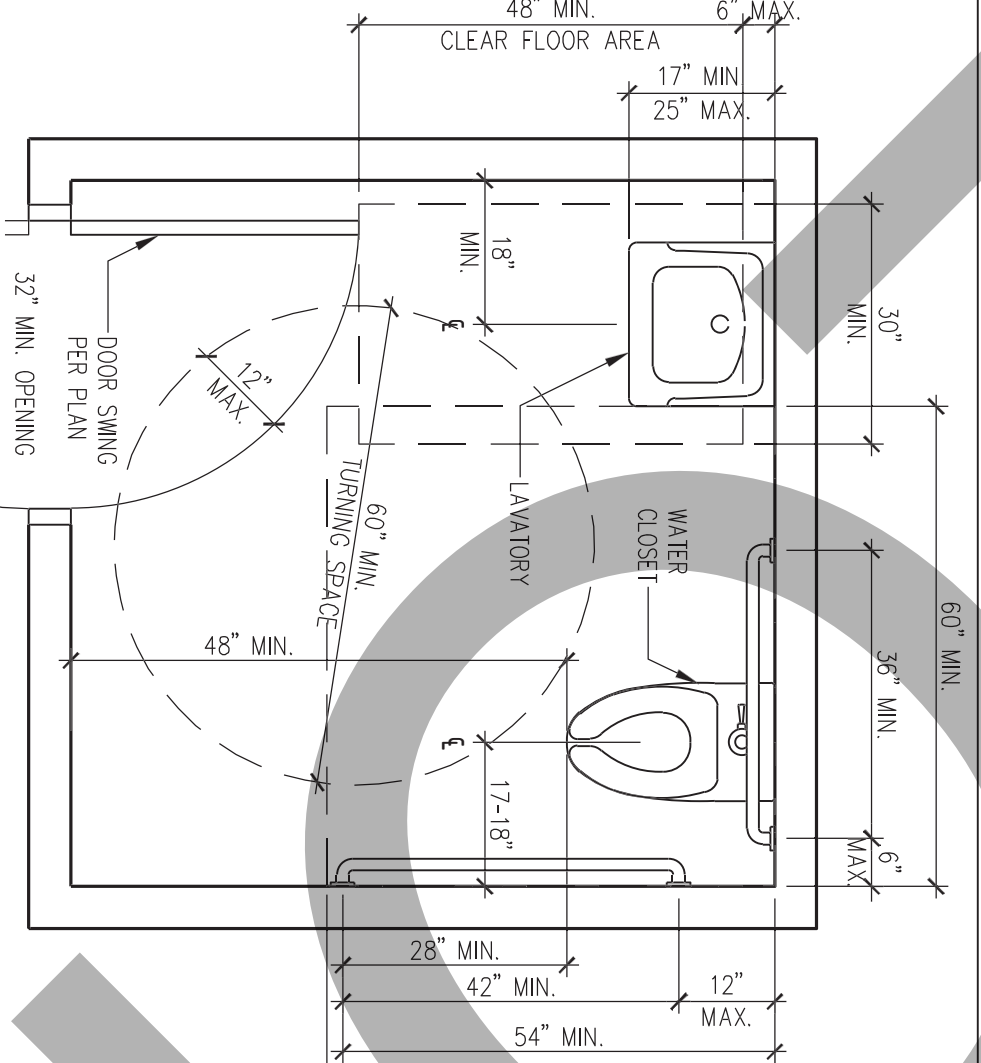
J13 TACTILE ROOM SIGNAGE

SCALE: 1/2"=1'-0"



E13 TOILET IDENTIFICATION

SCALE: 1/4"=1'-0"



A13 TYPICAL SINGLE OCCUPANCY TOILET CLEARANCES

SCALE: 1/2"=1'-0"

ARCHITECT



Healthcare Architects
ARCHITECTURE + PLANNING + DESIGN

18008 Sky Park Circle, Suite 290
Irvine, CA 92614
(949) 431-0071

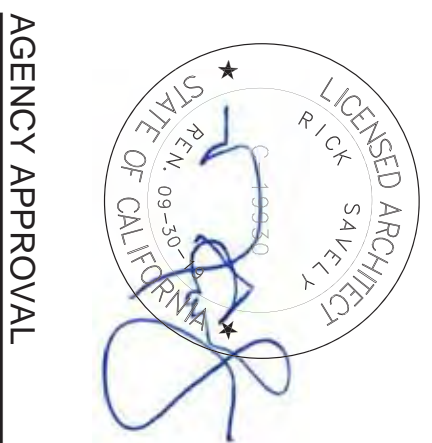
PROJECT

ARROWHEAD
REGIONAL MEDICAL CENTER
MEDICAL OFFICE BUILDING
400 N. PEPPER AVE.
COLTON, CALIFORNIA 92324

ONCOLOGY-AMBULATORY CLINIC

NO. DATE REVISIONS

PROFESSIONAL SEALS



AGENCY APPROVAL

Digitally signed by Eric Rodriguez, SE
DN: cn=Eric Rodriguez, SE, o=NVS, Inc., ou=Energy, email=eric.rodriquez@nvs.com, c=US
Reason: Reviewed for Code Compliance.
Date: 2019.06.12 08:55:47 -0700

DRAWN BY DATE
EED 02.22.2019
GL 06.23.2019

PROJECT NUMBER
SHA # 18242.100

SHEET TITLE
CODE ANALYSIS PLAN

SHEET NUMBER

A101

CBC TABLE 1004.1.1 OCCUPANT LOAD - SECOND FLOOR				
SUITE	OCCUPANCY	FUNCTION	LOAD FACTOR	FLOOR AREA
01	B	BUSINESS	100	1,472 SQ. FT.
02	B	BUSINESS	100	2,348 SQ. FT.
03	B	BUSINESS	100	2,365 SQ. FT.
04	B	BUSINESS	100	2,562 SQ. FT.
05	B	BUSINESS	100	9,320 SQ. FT.
CONF. A	ASSSEMBLY		15	250 SQ. FT.
TOTAL OCCUPANT LOAD FOR SECOND FLOOR:			201	

FIRE RESISTANCE RATING REQUIREMENTS (TABLE 601)

ITEM	ACTUAL OR REQUIRED	CODE REFERENCE
PRE PROTECTION SYSTEM	(E) AUTOMATIC FIRE EXTINGUISHING SYSTEM	SECTION 903.11.1, 905.3.1, EXCEPTION 1
CORRIDOR FIRE RESISTANCE RATING	0 HOURS A & B, NOT REQUIRED	TABLE 107.1
BEARING WALLS/EXTERIOR	1 HOUR	SECTION 107.2
NON-BEARING WALLS/INTERIOR	0 HOUR	TABLE 100.1
FLOOR CONSTRUCTION (BEAMS & JOISTS)	1 HOUR	SECTION 107.2
ROOF CONSTRUCTION (BEAMS & JOISTS)	1 HOUR	SECTION 1006
EXIT DOORS	32" MIN. REQUIRED	SECTION 1010.1.1
EXIT LIGHTING	MINIMUM 1 FOOT-CANDLE REQUIRED @ FLOOR LEVEL	SECTION 1017.3, EXCEPTION 2
INTERIOR FINISHES	MAXIMUM FLAME SPREAD CLASS ALLOWABLE EXISTING: CLASS B (76-200 FLAME SPREAD) CORRIDORS, CLASS C (76-200 FLAME SPREAD) ROOMS OR AREAS CLASS C (76-200 FLAME SPREAD) CLASS B IN 1 OCCUPANCIES	SECTION 803
WALL COVERINGS	SHALL BE TESTED IN ACCORDANCE WITH NFPA 285 AND ASTM E 84	SECTION 803
MECHANICAL AND ELEVATOR SHAFTS	MECHANICAL AND ELEVATOR SHAFTS WHERE CONNECTING LESS THAN 4 STORIES	SECTION 707.4
FIRE SEPARATIONS	WALLS USE OCCUPANCY SEPARATIONS: NONE	TABLE 506.3.3

SECOND FLOOR CODE SUMMARY

ITEM	DATA	CBC 2016 REFERENCE
OCCUPANCY TYPE	B (BUSINESS GROUP)	CHAPTER 3
CONSTRUCTION TYPE	II-A (NON-COMBUSTIBLE)	TABLE 504.3
OSPHD 3 CLINICS		SECTION 1226
INTERIOR FINISHES	PROVIDED THROUGHOUT	SECTION 903.1.1
AUTOMATIC SPRINKLER SYSTEM		TABLE 107.2
EXIT ACCESS TRAVEL DISTANCE	300'-0" MAX.	

LEGEND

- (E) SUITE SEPARATION
- (E) 1-HOUR RATED FIRE BARRIER WALL (20 MINUTE RATED OPENINGS)
- EGRESS PATH OF TRAVEL
- EXISTING EXIT DISCHARGE
- EXIT ACCESS
- EXISTING EXIT ACCESS CORRIDOR (1-HOUR RATED (20 MINUTE RATED OPENINGS))

KEY PLAN

