

Issued: June 10, 2019

**ADDENDUM NO. 3
SPRING VALLEY LAKE ADA AND OVERLAY PROJECTS
WORK ORDER: H14932 & H15010
AREA: Spring Valley Lake**

~~BIDS OPEN 11:00 AM, THURSDAY, JUNE 13, 2019~~
BIDS OPEN 2:00 PM, THURSDAY, JUNE 13, 2019

By Email via ePro System or Facsimile and Regular Mail with Telephone Confirmation (Paper Plan Holders)

Amend the Special Provisions as follows:

1. The bid opening time and date as shown on page NB-1 is changed as follows:

BIDS OPEN 2:00 PM, THURSDAY, JUNE 13, 2019

2. Delete section 10-1.09, titled "MOBILIZATION" and replace with the following:

10-1.09 MOBILIZATION

Mobilization shall conform to the provisions in Section 9-1.16D, "Mobilization," of the Standard Specifications.

The contract lump sum price paid for **Mobilization** shall include full compensation for furnishing all labor, materials, tools, equipment and incidentals, and for doing all the work involved in mobilization as specified herein. No additional compensation will be allowed for additional mobilization / demobilization costs due to weather days or loss of production due to cold weather.

3. Delete section 10-1.25, titled "MISCELLANEOUS CONCRETE CONSTRUCTION" and replace with the following:

10-1.25 MISCELLANEOUS CONCRETE CONSTRUCTION

Curb & Gutter, Spandrel, Sidewalk, Pedestrian Ramps and Driveways shall conform to the provisions in Section 73, "Concrete Curbs and Sidewalks", of the Standard Specifications.

Curb & Gutter, Spandrel, Sidewalk, Pedestrian Ramps and Driveways shall be constructed monolithically of Minor Concrete.

The first paragraph in Section 73-1.03B, "Subgrade Preparation," of the Standard Specifications is superseded by the following:

Relative compaction of not less than 95 percent shall be obtained for a minimum depth of 0.50-foot below the grading plane for the width of the traveled way, including cross gutters. Where curb, gutter, sidewalk and pedestrian ramps are to be constructed, the subgrade material shall be compacted to a relative compaction of not less than 90 percent for a minimum depth of 0.50-foot below the grading plane.

After compaction and grading, the subgrade shall be firm, hard, and unyielding.

The constructed curb ramp and/or sidewalk slopes shall be verified using a 2-foot electronic level and shall not exceed the maximum grade as shown on the plans and/or

Addendum No. 3

SPRING VALLEY LAKE ADA RAMPS AND VARIOUS ROADS OVERLAY PROJECT

June 10, 2019

Page 2 of 9

standard drawings. If ramp or sidewalk exceeds the maximum slope allowed, Contractor shall reconstruct the ramp or sidewalk immediately and all expenses thereon shall be solely borne by the Contractor. Prior to any reconstruction work of the ramp or sidewalk, the Contractor shall notify immediately and seek the approval of the Engineer.

Non-Pigmented curing compound shall be used on exposed concrete surfaces other than curb and gutter.

Any curb and sidewalk joints (weakened plane joints and expansion joints) shall be constructed per County Std. 110A (modified) or SPPWC Std. 112-2.

Areas of sidewalk immediately adjacent to the existing ramp to be reconstructed with cracks 1/4" and larger, shall be repaired by using a concrete repair caulk such as Polyurethane Concrete Crack sealant or approved equivalent like epoxy. No grouts shall be used. It shall be smooth troweled.

Areas of sidewalk immediately adjacent to the existing ramp to be reconstructed with any vertical separation from adjacent areas of concrete shall be replaced and repaired in accordance with the following. The extents of the area to be removed shall be determined by the Engineer and saw cut to a neat true line, the damaged area removed, the supporting materials will be compacted, and graded and the surfacing replaced with minor concrete with slope not to exceed the maximum allowed (preferred 1.5% max).

Concrete shall be air-entrained as provided in Section 90-1.02E(3), "Air-Entraining Admixtures," of the Standard Specifications. The air content, when tested at point of placement, shall be no more than 5.5 percent and no less than 4.0 percent.

Nothing herein shall be construed as relieving the Contractor of his responsibility to conform and meet all the requirements of an ADA compliant ramp or sidewalk.

Spring Valley Parkway

Along Spring Valley Parkway from Huerta Street to Pier Drive (L=1.4 mi) the existing Median Curb and Curb & Gutter shall be removed and replaced to conform with Caltrans Std. A87A (Type A1-8) and County Std. 115 (Modified). Existing damaged Sidewalk and Cross Gutter, within the area shown on the plans, shall be removed and replaced to conform to County Std. 109 (Modified) and County Std. 119 as directed by the Engineer.

Compensation for the removal and construction of Median Curb and Curb & Gutter includes payment for the labor, tools and for the replacement of any type of materials (like landscape rocks, sod, stone paver, etc.) behind the median curb or curb and gutter of which are temporarily removed to the perform the formworks during construction. The material shall be replaced in-kind.

The locations for cross gutters to be removed and replaced are, as follows:

Cross Gutter 1: Spring Valley Parkway at Deer Park Lane (Size: 6' x 34')

Cross Gutter 2: Spring Valley Parkway at Cedarbrook Lane (Size: 6' x 34')

Cross Gutter 3: Spring Valley Parkway at Pebble Beach Dr (Size: 6' x 34')

The locations of Median Curb, Curb & Gutter, Damaged Sidewalk and Cross Gutter, as shown on the plan (Sheet 7A) are approximate. The Engineer shall determine the exact locations.

Addendum No. 3**SPRING VALLEY LAKE ADA RAMPS AND VARIOUS ROADS OVERLAY PROJECT**

June 10, 2019

Page 3 of 9

Contractor shall take photos prior to removal of existing curb and gutter and replace street numbers in kind (color and size). The compensation includes payment for painting street numbers and no other compensation will be allowed therefor.

The Contractor shall notify the County Surveyor two (2) weeks prior to construction along Spring Valley Parkway. County Surveyor to provide the horizontal offsets and vertical elevations and stakes on site for the purpose of restoring and preserving the original profile.

Various Locations

At locations on various streets (except Spring Valley Parkway from Huerta Street to Pier Drive) as identified by the Engineer, the damaged portion of the existing Curb & Gutter and Driveway Wing require removal and replacement. Contractor shall repair, restore and reconstruct Curb & Gutter and Driveway Wing according to the applicable standards mentioned-above, as designated or directed by the Engineer.

Prior to milling, the Contractor shall identify and mark any damaged section of the existing curb and gutter within the project limit. The Contractor shall notify the Engineer of each location. The Engineer shall determine if repair or reconstruction is necessary. The payment for the repair or reconstruction of any damaged curb and gutter and driveway wing is included under this section.

Contractor shall take photos prior to removal of existing curb and gutter and replace street numbers in kind (color and size). The compensation includes payment for painting street numbers and no other compensation will be allowed therefor.

Catch Basin Repair and Restoration

At locations along Spring Valley Parkway as identified by the Engineer, the damaged portion of four (4) existing Catch Basins require minor repair, restoration and reconstruction, as designated or directed by the Engineer. The repairs and restoration shall conform to County Standards. 206 (Modified) and 206a.

Contractor shall perform repairs and restoration with extra care for the existing four (4) Catch Basins at the following locations:

Catch Basin 1: 12383 Spring Valley Parkway (Size: 3' x 15')

Catch Basin 2: 12844 Spring Valley Parkway (Size: 4' x 22'-8")

Catch Basin 3: 12960 Spring Valley Parkway (Size: 3'-7" x 22'-4")

Catch Basin 4: 13415 Spring Valley Parkway (Size: 3'-9" x 8'-4")

The locations are approximate. The Engineer shall determine the exact locations.

Prior to any repairs, the Contractor shall provide a repair and restoration plan for each damaged section of the Catch Basins for the Engineer's approval.

Any damage to portions of the structure outside the approved repair plan that should have been protected in place (slab, walls or Local Depression) during the Contractor's operations, shall be repaired to previous condition at the Contractor's sole expense.

Photos of all four (4) damaged Catch Basins are attached somewhere in these Special Provisions for visual and information purposes only. The Contractor shall site visit, identify, evaluate and assess the damaged portion of the existing catch basins prior to submitting his

bid. Nothing herein relieves the Contractor of his responsibility to comply with the bidding requirements.

All removed materials shall become the property of the Contractor and shall be disposed of outside the highway right of way in accordance with the provisions in Section 5-1.20B(4), "Contractor-Property Owner Agreement", section 14-10, "Solid Waste disposal and Recycling", and section 14-11, "Hazardous Waste and Contamination" of the Standard specification.

Payment Clause for ADA Ramps:

The contract price paid per cubic yard for **Minor Concrete (Curb & Gutter, Spandrel, Sidewalk, Pedestrian Ramps, Driveways and Retaining Curb)** shall include full compensation for furnishing all labor, materials, tools, equipment and incidentals, repairing, sealing cracks, restore grade separation, including excavation, backfilling and grade preparation, complete in place, as shown on the plans, and as specified in the Standard Specifications, these Special Provisions, and as directed by the Engineer.

Payment Clause for Spring Valley Parkway, Various Locations and Catch Basin Miscellaneous Concrete Construction:

The contract price paid per cubic yard for **Minor Concrete (Median Curb, Curb & Gutter, Sidewalk, Cross Gutter and Driveway Wing)** shall include full compensation for furnishing all labor, materials, tools, equipment and incidentals including removal, disposal, replacement and reconstruction, excavation, backfill, paint street numbers, complete in place, as shown on the plans, and as specified in the Standard Specifications, these Special Provisions and as directed by the Engineer.

The contract lump sum price paid for **Catch Basin Repair and Restoration** shall include full compensation for furnishing all labor, materials, tools, equipment and incidentals and for doing all the work involved in saw cutting, removing, disposing damaged section, repairing and restoring catch basin, including placing concrete, reinforcing bars and angle bars (if needed), complete in place, as shown on the plans and as specified in the Standard Specifications, these Special Provisions and as directed by the Engineer.

4. Replace section 10-1.14, titled "REMOVE CONCRETE" and replace with the following:

10-1.14 REMOVE CONCRETE

This work shall consist of removal and disposal of existing Portland Cement Concrete within the limits shown on the plans and set in the field by the Engineer, and shall conform to the provisions in Section 15, "Existing Highway Facilities," of the Standard Specifications and these Special Provisions.

Attention is directed to the provisions in Section 16, "Clearing and Grubbing," of the Standard Specifications and these special provisions.

Portions of existing concrete sidewalks, curbs, gutters, ramps, spandrels and driveways which interfere with construction shall be removed.

Addendum No. 3

SPRING VALLEY LAKE ADA RAMPS AND VARIOUS ROADS OVERLAY PROJECT

June 10, 2019

Page 5 of 9

Portions of existing concrete sidewalks shall be saw cut and removed as necessary for installation of the roadside sign posts.

Where no joint exists between concrete to be removed and concrete to remain in place, the concrete shall be saw cut in a neat, true line to a minimum of 0.17 foot before concrete is removed. The locations of the cut lines shown on the plans are approximate only; the exact location will be determined by the Engineer.

Removed concrete shall become the property of the Contractor and disposed of outside the highway right of way in accordance with the provisions in Section 5-1.20B(4), "Contractor-Property Owner Agreement", Section 14-10, "Solid Waste Disposal and Recycling", and Section 14-11.02E, "Contractor-General Hazardous Waste" of the Standard Specifications.

Removal of all other concrete other than existing concrete sidewalk, curb & gutter, ramps and spandrel, as shown on the plans, shall be considered as included in the prices paid for the various contract items of work and no additional compensation will be allowed therefor.

Nothing herein shall be construed as relieving the Contractor of his responsibility for final cleanup of the highway as provided in Section 4-1.13, "Cleanup," of the Standard Specifications.

Payment Clause for Remove Concrete (ADA RAMPS)

The contract price paid per square yard for **Remove Concrete (Ramp, Sidewalk, Spandrel and Cross Gutter)** includes full compensation for furnishing all labor, materials, tools, equipment, and incidentals, and for doing all the work involved in saw cutting, removing and disposing of removed concrete materials, as shown on the plans, as specified in the Standard Specifications and these special provisions, and as directed by the Engineer.

The contract price paid per linear feet for **Remove Concrete (Curb and Curb & Gutter)** includes full compensation for furnishing all labor, materials, tools, equipment, and incidentals, and for doing all the work involved in saw cutting, removing and disposing of removed concrete materials, as shown on the plans, as specified in the Standard Specifications and these special provisions, and as directed by the Engineer.

Payment Clause for Remove Concrete (Various Roads – Overlay Projects)

The contract price paid per lineal feet for **Remove Concrete (Curb & Gutter and Median Curb & Gutter)** includes full compensation for furnishing all labor, materials, tools, equipment and incidentals, and for doing all the work involved in saw cutting, removing and disposing of removed concrete materials, as shown on the plans, as specified in the Standard Specifications and these Special Provisions, and as directed by the Engineer.

The contract price paid per square yard for **Remove Concrete (Sidewalk, Cross Gutter and Driveway Wing)** includes full compensation for furnishing all labor, materials, tools, equipment and incidentals, and for doing all the work involved in saw cutting, removing and disposing of removed concrete materials, as shown on then plans, as specified in the Standard Specifications and these Special Provisions and as directed by the Engineer.

5. Replace section 10-1.26, titled "ASPHALT CONCRETE (RAP Optional)" and replace with the following:

10-1.26 ASPHALT CONCRETE (RAP Optional) – (2010 CALTRANS STANDARD SPECIFICATIONS)

Asphalt concrete shall be HMA, Type A and shall conform to the provisions in Section 39, "Hot Mix Asphalt," of the 2010 CALTRANS Standard Specifications and these special provisions. Whenever in the terms "Hot Mix Asphalt" and "HMA" are used, they shall be understood to mean and refer to "Asphalt Concrete" and "AC" respectively.

The Contractor may produce asphalt concrete using reclaimed asphalt pavement (RAP). The Contractor may substitute RAP for a portion of the virgin aggregate in asphalt concrete in an amount not exceeding 15 percent of the asphalt concrete dry aggregate mass.

RAP shall be processed from asphalt concrete removed from pavement surfaces. RAP shall be stored in stockpiles on smooth surfaces free of debris and organic material. RAP stockpiles shall consist only of homogeneous RAP. The Contractor may process and stockpile RAP throughout the project's life. Processing and stockpiling operations shall prevent material contamination and segregation.

The asphalt concrete shall conform to the following requirements:

1. Asphalt concrete shall be produced at a central mixing plant.
2. The aggregate for asphalt concrete (Type A) to be used as base course materials shall conform to the (Type A, ½-inch Aggregate Gradation) specified in Section 39-1.02E, "Aggregate," of the Standard Specifications.
3. The aggregate for asphalt concrete (leveling) shall conform to the (Type A, 3/8-inch, Aggregate Gradation) specified Section 39-1.02E, "Aggregate," of the Standard Specifications.
4. The asphalt binder grade shall be PG 70-10 for asphalt concrete.
5. If the Contractor does not use RAP, the amount of asphalt binder to be mixed with the aggregate for Type A asphalt concrete will be determined by the Contractor and submitted to the Engineer for approval in accordance with California Test 367 using the samples of aggregates furnished by the Contractor in conformance with Section 39-1.03, "HOT MIX ASPHALT MIX DESIGN REQUIREMENTS" of the Standard Specifications.
6. If the Contractor uses RAP, the amount of asphalt binder to be mixed with the combined virgin aggregate and RAP will be determined by the Contractor and submitted to the Engineer for approval in accordance with California Test 367 amended by Lab Procedure-9 (LP-9). LP-9 is available at: <http://www.dot.ca.gov/hq/esc/Translab/ofpm/fpmlab.htm>

At least 5 days before starting production of asphalt concrete using RAP, the Contractor shall submit a proposed asphalt concrete mix design in writing to the Engineer.

Additional asphalt concrete surfacing material shall be placed along the edge of the surfacing at road connections and private drives, hand raked, if necessary, and compacted to form smooth connecting surfaces. Full compensation for furnishing all labor and tools and doing all the work

Addendum No. 3

SPRING VALLEY LAKE ADA RAMPS AND VARIOUS ROADS OVERLAY PROJECT

June 10, 2019

Page 7 of 9

necessary to hand rake said connecting surfaces shall be considered as included in the contract prices paid per ton for the various contract items of asphalt concrete surfacing involved and no additional compensation will be allowed therefor.

Immediately in advance of applying paint binder, the roadway shall be free of moisture, loose or extraneous material and the cost of said work shall be considered as included in the contract price per ton for the asphalt concrete involved and no additional compensation will be allowed therefor.

A prime/tack coat is required:

- a. Prime Coat shall be applied to the base prior to placing the Hot Mix Asphalt. Prime Coat shall be e-prime or approved equal and will be spread at a rate of 0.15 to 0.35 gal/sy, as directed by the Engineer.
- b. Tack coat shall be applied to existing pavement including planed surfaces, between layers of HMA and vertical surfaces of curbs, gutters, and construction joints. Tack coat must comply with the specifications for asphaltic emulsion in 2015 Caltrans Standard Specifications Section 94, "Asphaltic Emulsion," or asphalt binder in Section 92, "Asphalt Binders."

The price paid for asphalt concrete will include all costs for tack coat(s) applied to all edges and between layers of asphalt concrete paving or overlay.

Cracks to be filled with leveling course and adjacent asphalt concrete surfacing shall be cleaned and shall be free of dirt, vegetation, debris and loose sealant. A weed-killer/soil sterilant shall be applied. Cleaning shall be done by air blasting. Old sealant that protrudes above the asphalt concrete surfacing shall be completely removed. Routing will not be required. Hot compressed air or other means, approved by the Engineer, shall be used to clean and dry the crack immediately prior to application of material. When moisture is present, hot compressed air or other means, approved by the Engineer, shall be used to clean and dry the crack immediately prior to application of material.

Attention is directed to sections, "Asphalt Rubber Seal Coat" and "Traffic Control System" of these Special Provisions.

Quantities of asphalt concrete with/without RAP, will be paid for at the contract price per ton for **Asphalt Concrete (Type A)** and shall include full compensation for furnishing all labor, materials, tools, equipment and incidentals, and for doing all the work involved in constructing asphalt concrete complete in place, as shown on the plans, and as specified in the Standard Specifications, these special provisions, and as directed by the Engineer.

Quantities of asphalt concrete with/without RAP, will be paid for at the contract price per ton for **Asphalt Concrete (Leveling)** and shall include full compensation for furnishing all labor, materials, tools, equipment and incidentals, and for doing all the work involved in constructing asphalt concrete complete in place, as shown on the plans, and as specified in the Standard Specifications, these special provisions, and as directed by the Engineer.

6. Section 12 Standard and Special Drawings: Replace County Standard Drawing 109 (Modified) from Addendum 1, with the attached revised County Standard Drawing 109 (Modified).

Addendum No. 3

SPRING VALLEY LAKE ADA RAMPS AND VARIOUS ROADS OVERLAY PROJECT

June 10, 2019

Page 8 of 9

7. Replace pages 3 & 4 of the Proposal with the attached Addendum 3, P-3 & 4, respectively. **These pages shall be used for bidding purposes.**

Amend the Plans as follows:

1. Replace Sheet No. 8 by Sheet 8B.

The following question(s) have been received by bidders:

A complete list of questions and answers is attached in "West Fontana Channel, Addendum 3, Bidder Questions and Answers"

Addendum No. 3

SPRING VALLEY LAKE ADA RAMPS AND VARIOUS ROADS OVERLAY PROJECT

June 10, 2019

Page 9 of 9

The addition of these requirements shall be considered in concert with existing documents in preparation of bids. **THE BIDDER'S CERTIFICATION FOR THIS ADDENDUM NO. 3 SHALL BE SIGNED BY THE SAME PERSON WHO SIGNS THE PROPOSAL AND SHALL BE SUBMITTED WITH THE PROPOSAL. ANY proposal not accompanied by a signed BIDDER'S CERTIFICATION (below) acknowledging receipt of this Addendum No. 3 will NOT be accepted.**

KEVIN BLAKESLEE, Director
Department of Public Works

By: 

MOHAMMAD ALI, P.E., Chief
Contracts Division

BIDDER'S CERTIFICATION

By my signature hereunder, I acknowledge receipt of Addendum No. 3 and I fully understand the intent and detail of Addendum No. 3, which I have considered in my preparation of the attached proposal.

Bidder's Signature

Date

Note: The page containing the executed BIDDER'S CERTIFICATION (just this page), must be included with the proposal.

Bidder: _____

Project: **SPRING VALLEY LAKE AREA ADA RAMPS
AND OVERLAY PROJECTS**

W.O.#: (See Below)

Limits: **Various Locations**

Item No.	Approx. Quant.	Meas. Unit	Item Description	Unit Price	Total
ALL LOCATIONS					
1	50,000	F.A.	Supplemental Work At Force Account (Unforeseen Differing Site Conditions and Utility Conflicts)	\$ 1.00	\$ 50,000.00
2	450,000	F.A.	Supplemental Work At Force Account (Subgrade Stabilization)	\$ 1.00	\$ 450,000.00
3	1	L.S.	Construction Facility Field Office	\$	\$
4	1	L.S.	Prepare Final Storm Water Pollution Prevention Plan (SWPPP)	\$	\$
5	1	L.S.	Water Pollution Control Work	\$	\$
6	1	L.S.	Mobilization	\$	\$
7	1	L.S.	Develop Water Supply	\$	\$
8	1	L.S.	Traffic Control System	\$	\$
9	1	L.S.	Finishing Roadway	\$	\$
10	3	EA.	Portable Changeable Message Sign	\$	\$
Location Subtotal:					
ADA RAMPS - WO H14932					
11	90	S.Y.	Remove Asphalt Concrete Surfacing	\$	\$
12	110	S.Y.	Cold Plane Asphalt Concrete Pavement	\$	\$
13	490	S.Y.	Remove Concrete (Ramp, Sidewalk, Spandrel and Cross Gutter)	\$	\$
14	56	L.F.	Remove Concrete (Curb and Curb & Gutter)	\$	\$
15	1	L.S.	Clearing and Grubbing	\$	\$
16	55	TON	Asphalt Concrete (Type A)	\$	\$
17	66	C.Y.	Class 2 Aggregate Base	\$	\$
18	132	C.Y.	Minor Concrete (Curb & Gutter, Spandrel, Sidewalk, Pedestrian Ramps, Driveways and Retaining Curb)	\$	\$
19	1	EA.	Reset Roadside Sign	\$	\$
20	145	S.F.	ADA Ramp Detectable Warning Surface	\$	\$
Location Subtotal:					
VARIOUS ROADS (OVERLAY PROJECTS) - WO H15010					
21	225,454	S.Y.	Cold Plane Asphalt Concrete Pavement	\$	\$
22	571,863	S.Y.	Asphalt Rubber Binder Seal Coat	\$	\$
23	377,430	GAL	Asphalt Rubber Binder	\$	\$
24	9,133	TON	Asphalt Concrete (Leveling Course)	\$	\$
25	4,350	TON	Asphalt Concrete (Type A)	\$	\$

Bidder: _____

Project: **SPRING VALLEY LAKE AREA ADA RAMPS
AND OVERLAY PROJECTS**

W.O.#: (See Below)

Limits: **Various Locations**

Item No.	Approx. Quant.	Meas. Unit	Item Description	Unit Price	Total
26	50,428	TON	Rubberized Asphalt Concrete (Type G)	\$	\$
27	1,420	C.Y.	Minor Concrete (Median Curb, Curb & Gutter, Sidewalk, Driveway Wing and Cross Gutter)	\$	\$
28	8,666	S.Y.	Remove Asphalt Concrete Surfacing	\$	\$
29	300	EA.	Pavement Marker (Blue Reflective)	\$	\$
30	1,195	EA.	Pavement Marker (Retroreflective - Type D & G)	\$	\$
31	544	EA.	Adjust Frame and Cover To Grade	\$	\$
32	20,839	S.F.	Paint Pavement Markings (2-coat)	\$	\$
33	112,423	S.F.	Paint Traffic Stripe (2-coat)	\$	\$
34	1,132	L.F.	Paint Red Curb (2-coat)	\$	\$
35	25,950	L.F.	Remove Concrete (Curb & Gutter and Median Curb & Gutter)	\$	\$
36	827	S.Y.	Remove Concrete (Sidewalk, Cross Gutter and Driveway Wing)	\$	\$
37	1	L.S.	Catch Basin Repair and Restoration	\$	\$

Location Subtotal:

PROJECT TOTAL: \$

**Spring Valley Lake ADA RAMPS & Overlay
Addendum 3 - Q&A**

Q#	QUESTION	ANSWER
1	How does removal get paid for concrete replacement?	ADDENDUM 3 adds several pay items, including: Remove Median Curb (LF), Remove Curb & Gutter (LF), Remove Sidewalk (SY), Remove Driveway Wing (SY), Remove Cross Gutter (SY), Catch Basins Repair and Restoration (LS), and new clauses to: Miscellaneous Concrete Construction; and Remove Concrete
2	The ac repair work states 0.67' ½" ½"agg gradation, "Rubberized" Hot Mix. Is this the right mix? How does patching get paid?	Please refer to Sheet 8B (Addendum #3).
3	Areas of replacement are to be 'Designated by the Inspector'. The typical section reflects replacement of Curb, Curb & Gutter and Sidewalk. The Bid item additionally states Driveway Wing, Cross Gutter and Catch Basin. Costs of replacement can vary greatly with size of localized removals, i.e. 10-lf	See Answer #1
4	curb & gutter or 100-lf of curb & gutter. R & R of cross gutter requires additional traffic control. We need to get more detail on scope of work and size of localized R & R.	Use Caltrans RSP Std. T9, T10 or T13 whichever applies. Lump sum payment is included under Traffic control System.
5	Catch Basins are typically a structure item, not minor concrete. We need more detail of count and scope of repairs.	See Answer #1
6	Please clarify scope of Treatment Type 5 (Autumn Leaves Ave). This treatment shows 0.08' Type A 3/8" Hot Mix to be placed on native. Is this section correct? Can traffic be allowed on 3/8" HMA 'Base Course'?	Please refer to Sheet 8B (Addendum #3). Section Thickness has been revised, and traffic will be allowed on the revised section.
7	Has the time impact of this work been reflected in the original time of 100 work days? This does not seem adequate, especially since LD's are \$8300 per day.	Addendum #3 increases working days by 20days
8	Will traffic be allowed on the SAMI prior to overlay?	Please refer to Sheet 8B (Addendum #3).
9	Where does the Pedestrian Barricade at Ramp 11 get paid?	See updated Addendum 3 payment clause for Minor Concrete
10	Do you have a quantity of catch basins to be modified,? Per Addendum 1 page 5 of 9, the Catch Basins are to be included in the Minor concrete item.	Included are additional details of work to be done and photos of each catch basin, also refer to updated section within Minor Concrete.
11	How do the removals get paid for item 27 Minor Concrete? Example; items 13 &14 are removals for quantities in Minor concrete item 18 .	See Answer #1
12	Bid item 27 and Sheet 8A: The construction notes specify "as needed, designated and directed by Resident Engineer". Is the removal and replacement	The limits of the removal and replacement starts from Huerta Road to Pier Drive (per Special Provisions) as needed, designated and directed by the Engineer. The existing curb

**Spring Valley Lake ADA RAMPS & Overlay
Addendum 3 - Q&A**

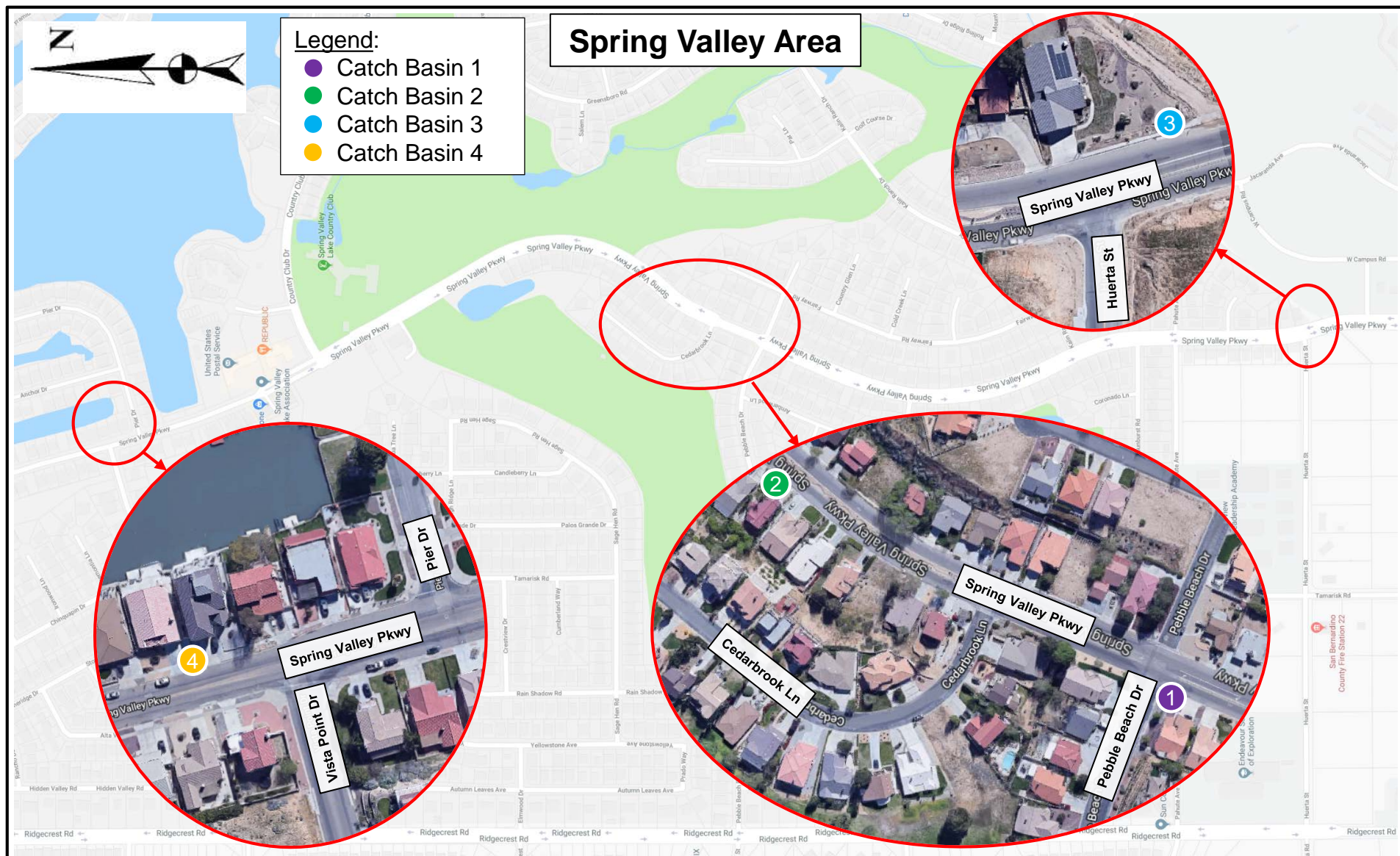
	if the curb, gutter and sidewalk continuous from Huerta Rd to Pier Drive?	and gutter including median will be removed and replaced. However, only the damaged sidewalk will be removed and replaced as designated by the Engineer. See Addendum No. 3 for additional information.
13	The limits of the removal and replacement starts from Huerta Road to Pier Drive (per Special Provisions) as needed, designated and directed by the Engineer. The existing curb and gutter including median will be removed and replaced. However, only the damaged sidewalk will be removed and replaced as designated by the Engineer. See Addendum No. 3 for additional information.	Yes. Please see Addendum No. 3 for additional information.
14	Addendum No. 1 Page 4: Reference is made to the catch basin shown on sheet 7A and the detail shown on sheet 8A. Neither the location nor the detail is shown on either sheet.	Included are additional details of work to be done and photos of each catch basin, also refer to updated section within Minor Concrete.
15	Bid item 25 Asphalt Concrete: Where is the work located for this pay item?	Please refer to Treatment Type 5 for Autumn leaves Avenue. Also, see Addendum No. 3.
16	AC Mix Design: The Spec calls for 2015 (Superpave) Caltrans conventional and rubber mixes. 2015 allow up to 25% RAP. The spec also refers to CTM 367 which would lead me to believe a 2010 Caltrans (Hveem) mix. Please clarify which Caltrans mix the County would like?	Addendum #3 revised the Asphalt Concrete section.
17	Bid item 27: Plan sheet 7A only indicates the portion of the Spring Valley Parkway street concrete to be replaced. Are there any quantities or location for the damaged flatwork (sidewalk, cross gutter, catch basin) that needs to be replaced? Please clarify.	Please refer to the answer 1 above. Also, see Addendum 3.



Legend:

- Catch Basin 1
- Catch Basin 2
- Catch Basin 3
- Catch Basin 4

Spring Valley Area



COUNTY OF SAN BERNARDINO
DEPARTMENT OF PUBLIC WORKS

District 1
Yard 16_H15010



LOCATION MAP

Spring Valley Damaged Catch Basins
Spring Valley Lake Various Roads Overlay

Spring Valley Area



COUNTY OF SAN BERNARDINO
DEPARTMENT OF PUBLIC WORKS

District 1
Yard 16_H15010



Catch Basin 1
12844 Spring Valley Parkway

Spring Valley Area



COUNTY OF SAN BERNARDINO
DEPARTMENT OF PUBLIC WORKS

District 1
Yard 16_H15010



Catch Basin 2
12960 Spring Valley Parkway

Spring Valley Area



COUNTY OF SAN BERNARDINO
DEPARTMENT OF PUBLIC WORKS

District 1
Yard 16_H15010



Catch Basin 3
12383 Spring Valley Parkway

Spring Valley Area



COUNTY OF SAN BERNARDINO
DEPARTMENT OF PUBLIC WORKS

District 1
Yard 16_H15010



Catch Basin 4
13415 Spring Valley Parkway

